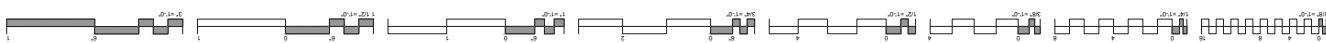
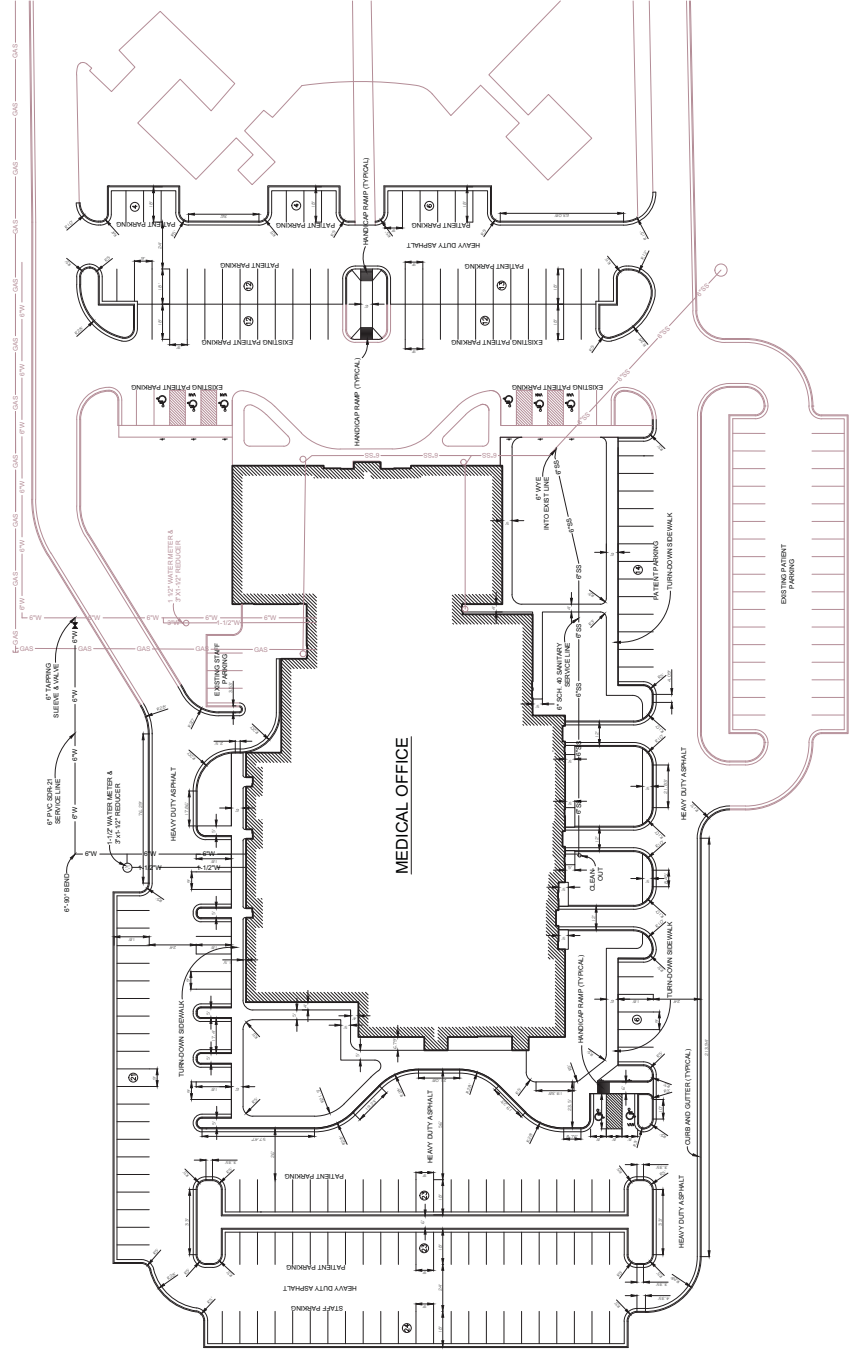
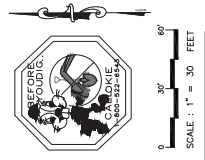


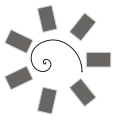
- EXISTING LEGEND**
- STORM SEWER
 - G OAK LINES
 - S SANITARY SEWER
 - W WASTEWATER
 - C GAS
 - T TELEPHONE LINES
 - C COMMUNICATION LINES
 - A BRASS CAP
 - IRON PIN

- PROPOSED LEGEND**
- X CHISELED "X" IN CONCRETE
 - STORM SEWER MANHOLE
 - SANITARY SEWER MANHOLE
 - SANITARY SEWER CLEANOUT
 - WASTEWATER CLEANOUT
 - WATER METER
 - GAS VALVE
 - GAS METER
 - CURB INLET
 - TELEPHONE PEDestal
 - POWER POLE
 - LIGHT POLE
 - DOWN GUY
 - SURVEY CONTROL

- PROPOSED LEGEND**
- HEAVY DUTY ASPHALT
 - CONCRETE PAVING
 - IRON
 - CONCRETE CURB & GUTTER
 - PROPOSED PARKING SPACES

- GENERAL SITE PLAN NOTES:**
1. ALL CONSTRUCTION SHALL BE IN ACCORDANCE WITH THE CHEROKEE NATION TRUST ACT AND THE CHEROKEE NATION CONSTITUTION.
 2. 5% SLOPE FINISH GRADES, SIDEWALKS, AND PAVING AWAY FROM BUILDING FOR POSITIVE DRAINAGE.
 3. GENERAL CONTRACTOR TO VERIFY ALL EXISTING CONDITIONS, GRADES, AND DIMENSIONS ON SITE AND REPORT ALL DISCREPANCIES TO ARCHITECT BY CONSTRUCTION.
 4. REMOVE ALL ITEMS AS NOTED. PROTECT ALL EXISTING ITEMS, STRUCTURES TO REMAIN.
 5. ALL CONSTRUCTION TO MEET STATE AND LOCAL CODES.
 6. ALL CURBS AND UTILITY CONNECTIONS SHOWN SHALL BE INCLUDED IN BASE BID.
 7. ALL DIMENSIONS UNLESS OTHERWISE NOTED ARE TO THE FACE OF CURB, FACE OF BUILDING OR CENTERLINE OF STRIKE. ALL CURB RAIMS ARE 5" UNLESS OTHERWISE NOTED.
 8. EXCEPT WHERE INDICATED OTHERWISE, PAVING SHALL BE REGULAR DUTY PAVEMENT.
 9. ALL PARKING SPACES INDICATED AS HANDICAPPED SPACES SHALL RECEIVE HANDICAP PAVEMENT MARKINGS. REFER TO DETAILS.
 10. PAINTED TRAFFIC ARROWS SHALL CONFORM TO THE MANUAL OF UNIFORM TRAFFIC CONTROL DEVICES.
 11. ALL CURB/HANDICAP RAMP BEGINS SHALL CONFORM TO CURRENT ADA STANDARDS.





James R. Childers
Architect, Inc.
1000 W. 10th Street
Tulsa, Oklahoma 74103
www.jrchilders.com



CHEROKEE NATION REDBIRD SMITH & ADDITION
SALLISAW, OKLAHOMA

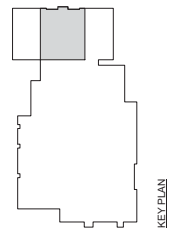
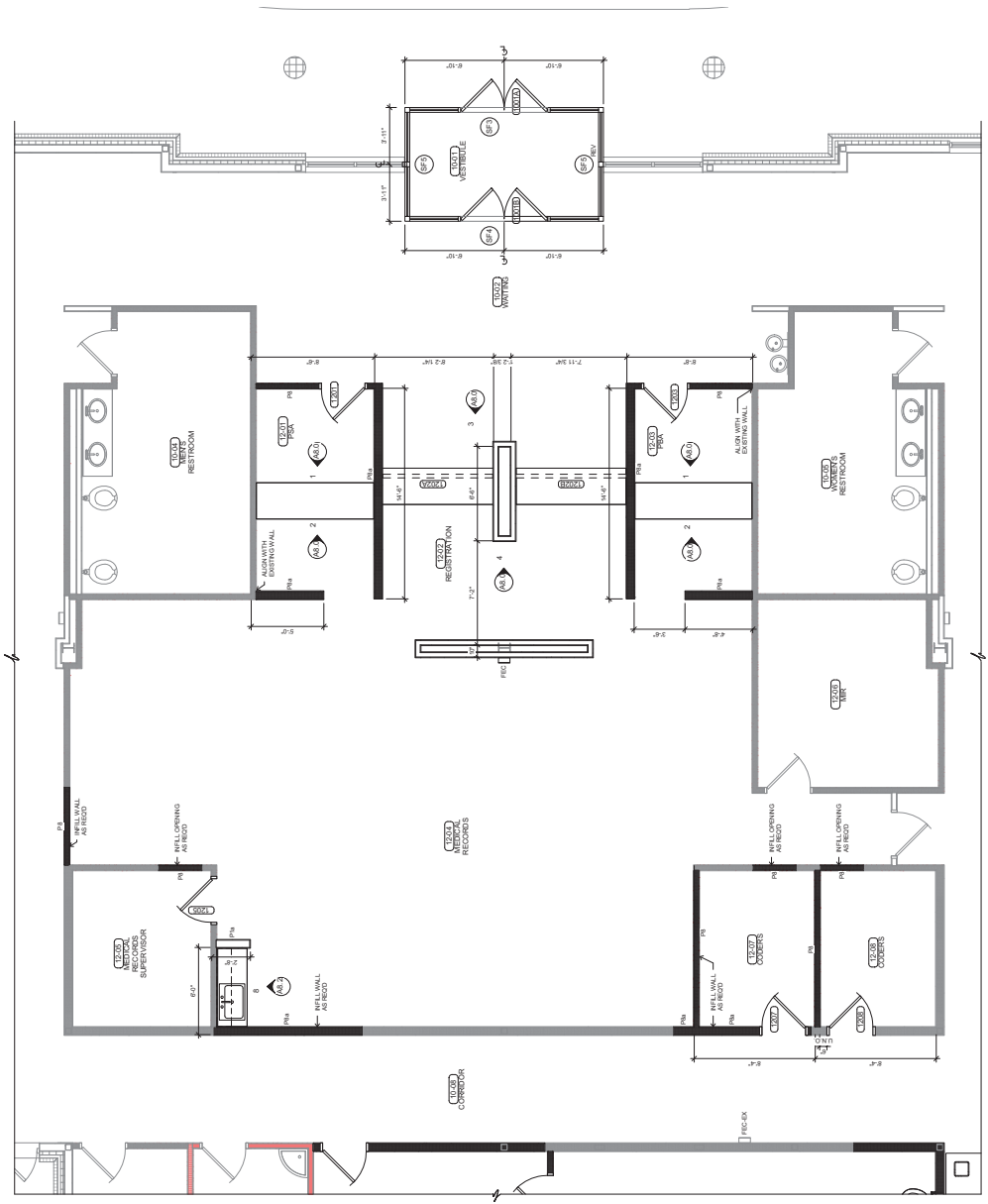
PROJECT NO. 05-261-13
DESIGN DOCUMENT SUBMITTAL

NO.	DATE	DESCRIPTION

PROJECT NO. 05-261-13
DATE: 12-14

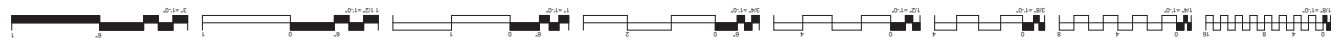
PROJECT NAME: A1.2

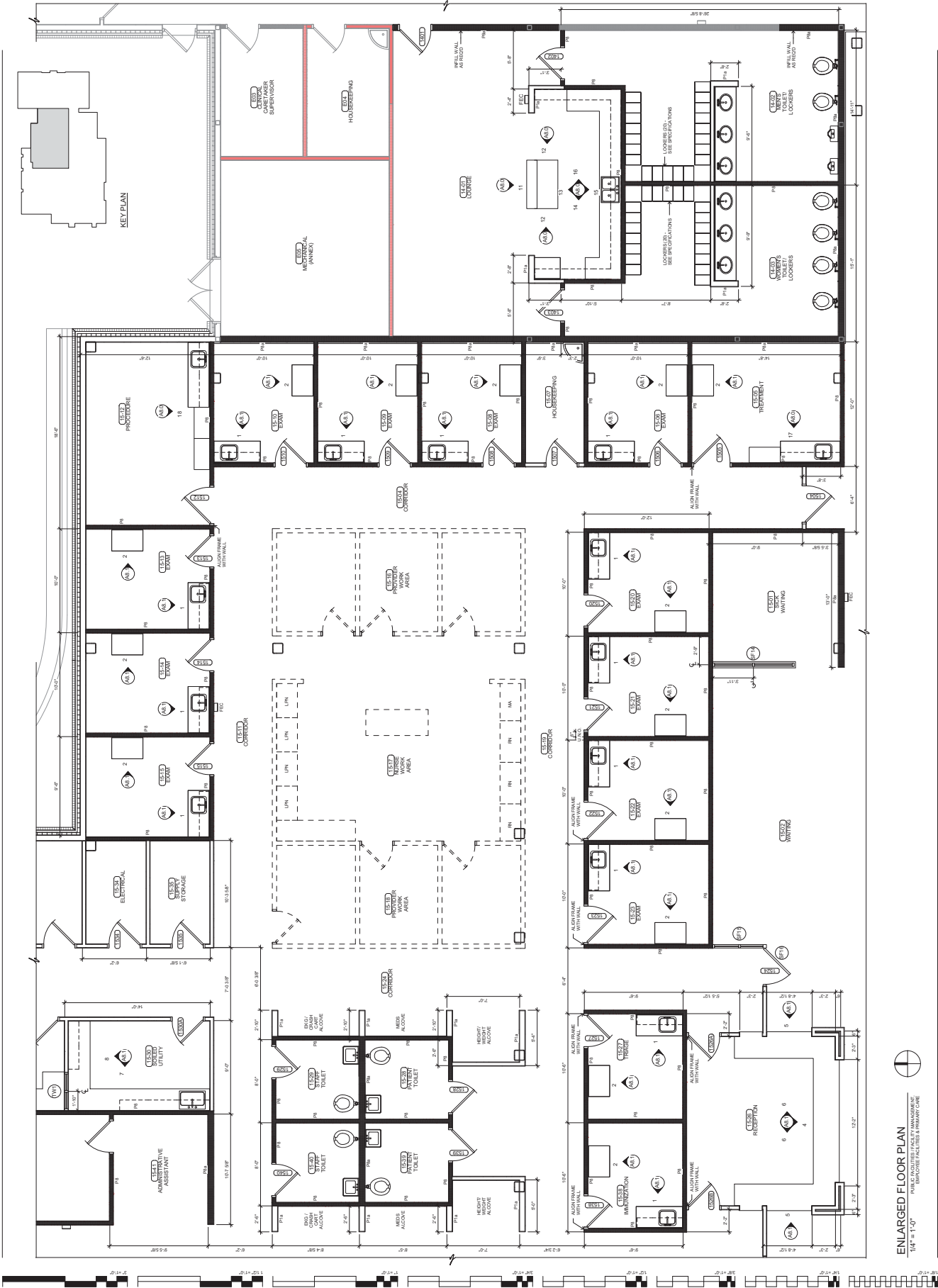
ENLARGED FLOOR PLAN



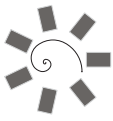
ENLARGED FLOOR PLAN
1/4" = 1'-0"

MURKIN FACILITIES FACILITY MANAGEMENT & REGISTRATION/ADMISSIONS CENTER





ENLARGED FLOOR PLAN
 1/4" = 1'-0"
 POSSIBLE FACILITIES A PRIVATE CARE



James R. Childers
Architect, Inc.
1000 W. 10th St., Suite 200
Tulsa, Oklahoma 74103
www.jrchilders.com

PROFESSIONAL SEAL:

EXHIBIT/DATE/TITLE:



CHEROKEE NATION ANNEX REMODEL & ADDITION
SALLISAW, OKLAHOMA

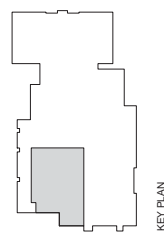
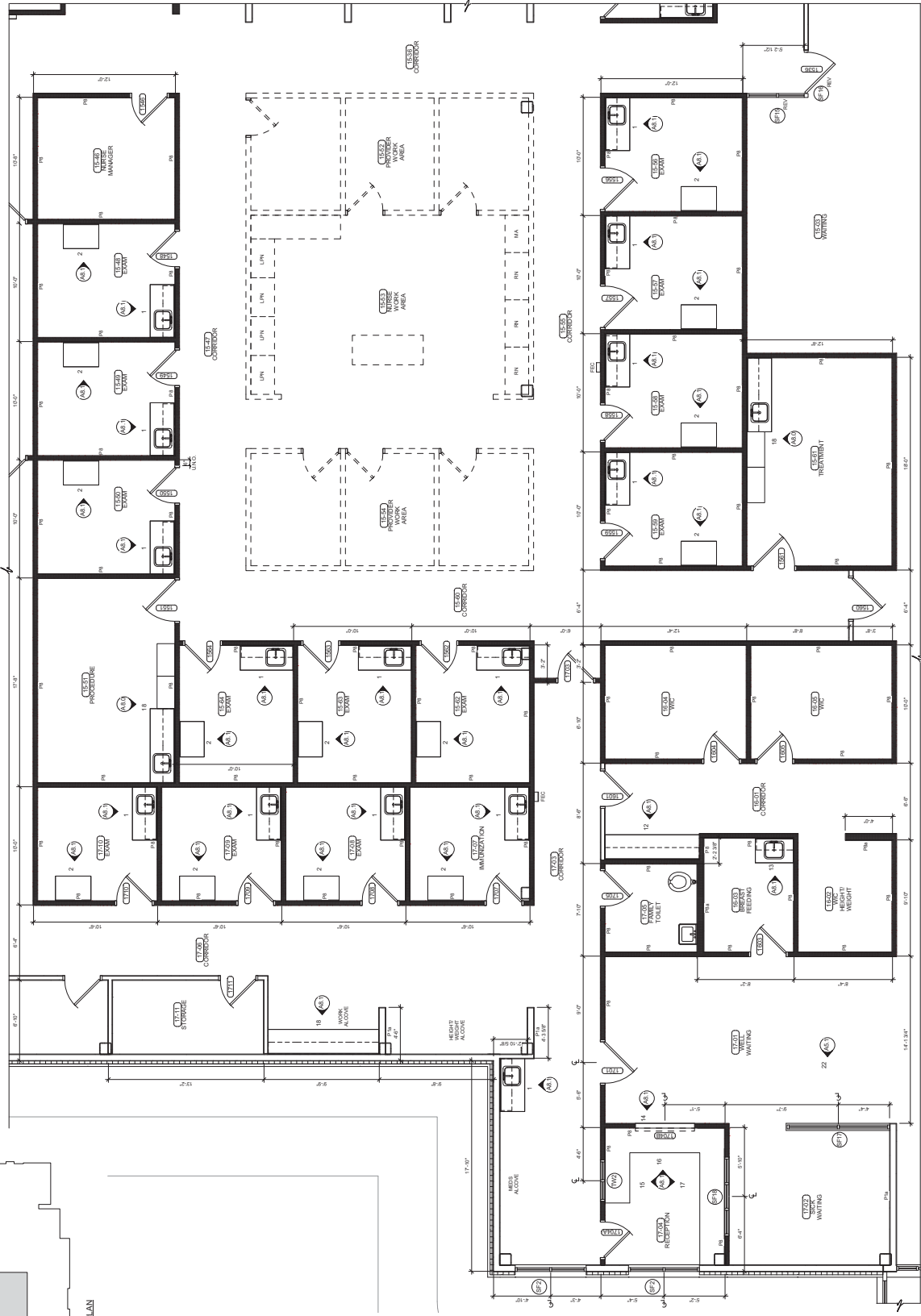
PROJECT NO: 03-261-13
DESIGN DEVELOPMENT
DATE: 12-14

NO.	DATE	DESCRIPTION

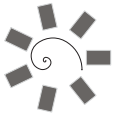
PROJECT NO: 03-261-13
DATE: 12-14

PROJECT NAME: A1.4

ENLARGED FLOOR PLAN



ENLARGED FLOOR PLAN
PRIMARY QUE AND RECEPTIONS
1/4" = 1'-0"



James R. Childers
Architect, Inc.
1000 W. 10th Street
Tulsa, Oklahoma 74103
www.jrchilders.com

PROFESSIONAL SEAL

EXPIRES 12/31/2025



CHEROKEE NATION REDBIRD SMITH & ADDITION
SALLISAW, OKLAHOMA

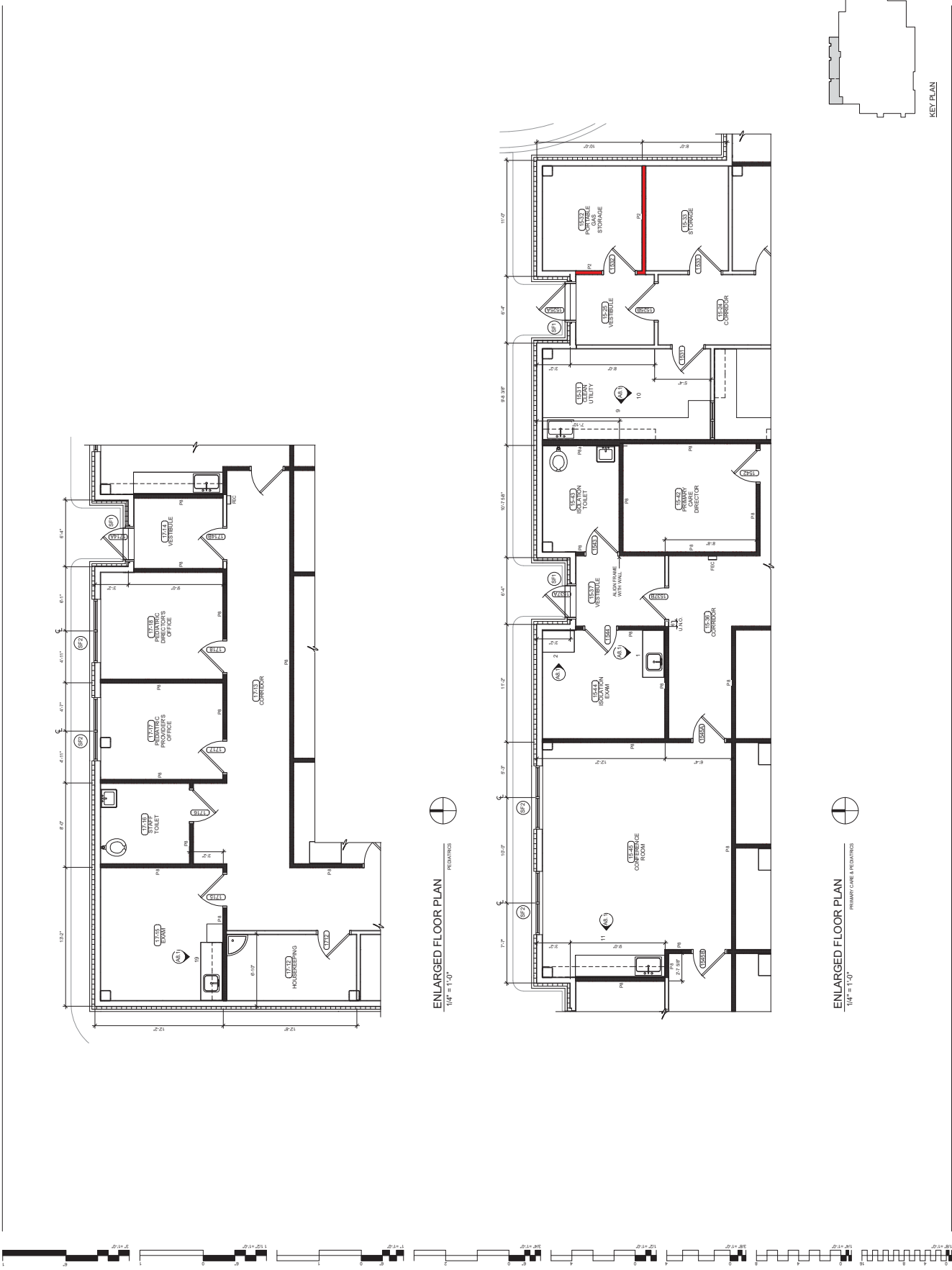
PROFESSIONAL DESIGN DOCUMENT SUBMITTAL

NO.	DATE	DESCRIPTION

DATE: 03-26-13
PROJECT NUMBER: 12-14

A1.5

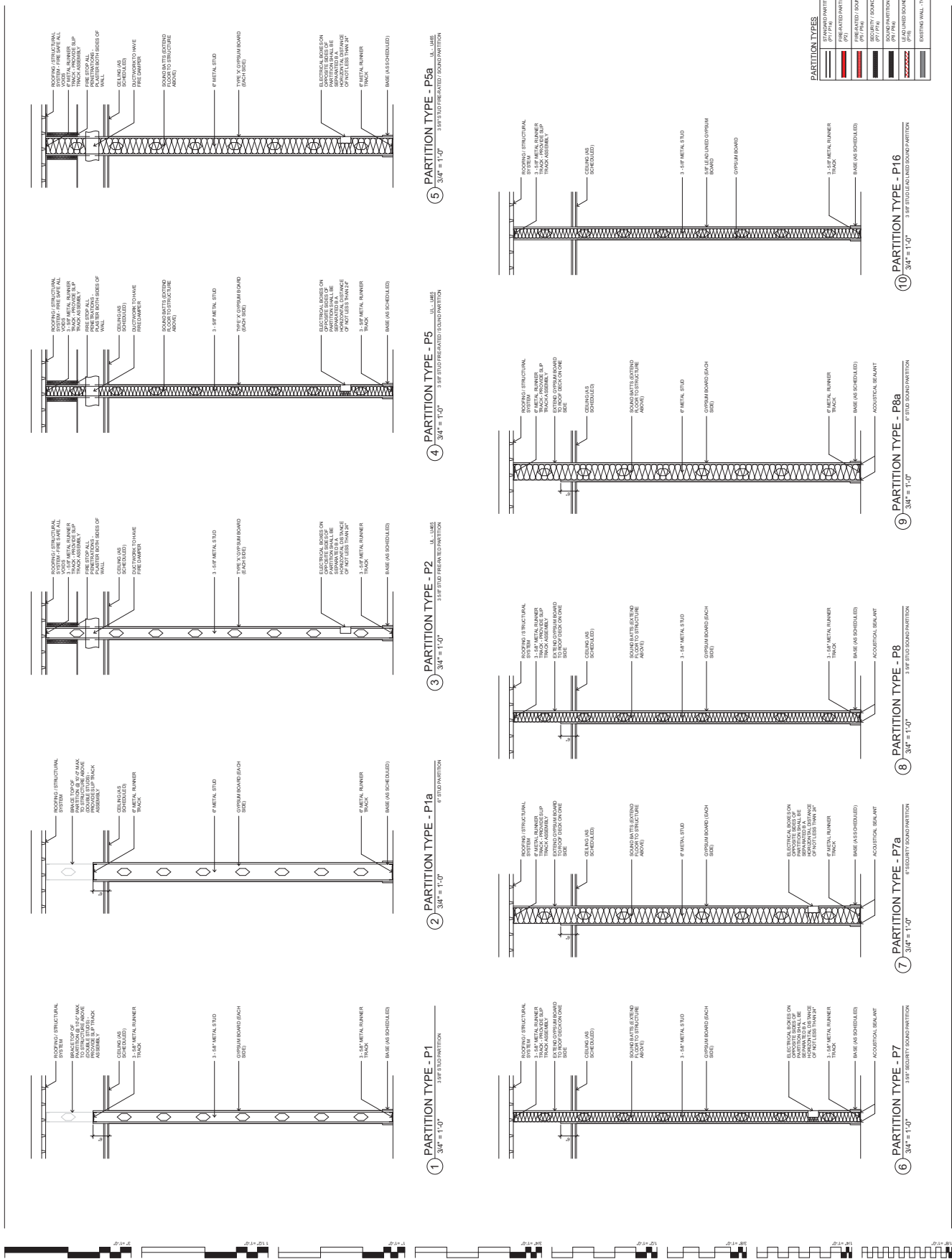
ENLARGED FLOOR PLAN



ENLARGED FLOOR PLAN
1/4" = 1'-0"
PRIMARY CARE & PEDIATRICS

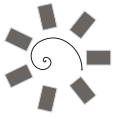
ENLARGED FLOOR PLAN
1/4" = 1'-0"
PRIMARY CARE & PEDIATRICS

KEY PLAN



SPACE TABULATION

MARK	DESCRIPTION	POS. NSF	ACTUAL NSF	Comments
10-01	10-01 ADMINISTRATION	10	10	
10-02	10-02 OFFICE	10	10	
10-03	10-03 CONFERENCE ROOM	10	10	
10-04	10-04 STORAGE	10	10	
10-05	10-05 RESTROOM	10	10	
10-06	10-06 BREAK ROOM	10	10	
10-07	10-07 STORAGE	10	10	
10-08	10-08 STORAGE	10	10	
10-09	10-09 STORAGE	10	10	
10-10	10-10 STORAGE	10	10	
10-11	10-11 STORAGE	10	10	
10-12	10-12 STORAGE	10	10	
10-13	10-13 STORAGE	10	10	
10-14	10-14 STORAGE	10	10	
10-15	10-15 STORAGE	10	10	
10-16	10-16 STORAGE	10	10	
10-17	10-17 STORAGE	10	10	
10-18	10-18 STORAGE	10	10	
10-19	10-19 STORAGE	10	10	
10-20	10-20 STORAGE	10	10	
10-21	10-21 STORAGE	10	10	
10-22	10-22 STORAGE	10	10	
10-23	10-23 STORAGE	10	10	
10-24	10-24 STORAGE	10	10	
10-25	10-25 STORAGE	10	10	
10-26	10-26 STORAGE	10	10	
10-27	10-27 STORAGE	10	10	
10-28	10-28 STORAGE	10	10	
10-29	10-29 STORAGE	10	10	
10-30	10-30 STORAGE	10	10	
10-31	10-31 STORAGE	10	10	
10-32	10-32 STORAGE	10	10	
10-33	10-33 STORAGE	10	10	
10-34	10-34 STORAGE	10	10	
10-35	10-35 STORAGE	10	10	
10-36	10-36 STORAGE	10	10	
10-37	10-37 STORAGE	10	10	
10-38	10-38 STORAGE	10	10	
10-39	10-39 STORAGE	10	10	
10-40	10-40 STORAGE	10	10	
10-41	10-41 STORAGE	10	10	
10-42	10-42 STORAGE	10	10	
10-43	10-43 STORAGE	10	10	
10-44	10-44 STORAGE	10	10	
10-45	10-45 STORAGE	10	10	
10-46	10-46 STORAGE	10	10	
10-47	10-47 STORAGE	10	10	
10-48	10-48 STORAGE	10	10	
10-49	10-49 STORAGE	10	10	
10-50	10-50 STORAGE	10	10	
10-51	10-51 STORAGE	10	10	
10-52	10-52 STORAGE	10	10	
10-53	10-53 STORAGE	10	10	
10-54	10-54 STORAGE	10	10	
10-55	10-55 STORAGE	10	10	
10-56	10-56 STORAGE	10	10	
10-57	10-57 STORAGE	10	10	
10-58	10-58 STORAGE	10	10	
10-59	10-59 STORAGE	10	10	
10-60	10-60 STORAGE	10	10	
10-61	10-61 STORAGE	10	10	
10-62	10-62 STORAGE	10	10	
10-63	10-63 STORAGE	10	10	
10-64	10-64 STORAGE	10	10	
10-65	10-65 STORAGE	10	10	
10-66	10-66 STORAGE	10	10	
10-67	10-67 STORAGE	10	10	
10-68	10-68 STORAGE	10	10	
10-69	10-69 STORAGE	10	10	
10-70	10-70 STORAGE	10	10	
10-71	10-71 STORAGE	10	10	
10-72	10-72 STORAGE	10	10	
10-73	10-73 STORAGE	10	10	
10-74	10-74 STORAGE	10	10	
10-75	10-75 STORAGE	10	10	
10-76	10-76 STORAGE	10	10	
10-77	10-77 STORAGE	10	10	
10-78	10-78 STORAGE	10	10	
10-79	10-79 STORAGE	10	10	
10-80	10-80 STORAGE	10	10	
10-81	10-81 STORAGE	10	10	
10-82	10-82 STORAGE	10	10	
10-83	10-83 STORAGE	10	10	
10-84	10-84 STORAGE	10	10	
10-85	10-85 STORAGE	10	10	
10-86	10-86 STORAGE	10	10	
10-87	10-87 STORAGE	10	10	
10-88	10-88 STORAGE	10	10	
10-89	10-89 STORAGE	10	10	
10-90	10-90 STORAGE	10	10	
10-91	10-91 STORAGE	10	10	
10-92	10-92 STORAGE	10	10	
10-93	10-93 STORAGE	10	10	
10-94	10-94 STORAGE	10	10	
10-95	10-95 STORAGE	10	10	
10-96	10-96 STORAGE	10	10	
10-97	10-97 STORAGE	10	10	
10-98	10-98 STORAGE	10	10	
10-99	10-99 STORAGE	10	10	
10-100	10-100 STORAGE	10	10	
10-101	10-101 STORAGE	10	10	
10-102	10-102 STORAGE	10	10	
10-103	10-103 STORAGE	10	10	
10-104	10-104 STORAGE	10	10	
10-105	10-105 STORAGE	10	10	
10-106	10-106 STORAGE	10	10	
10-107	10-107 STORAGE	10	10	
10-108	10-108 STORAGE	10	10	
10-109	10-109 STORAGE	10	10	
10-110	10-110 STORAGE	10	10	
10-111	10-111 STORAGE	10	10	
10-112	10-112 STORAGE	10	10	
10-113	10-113 STORAGE	10	10	
10-114	10-114 STORAGE	10	10	
10-115	10-115 STORAGE	10	10	
10-116	10-116 STORAGE	10	10	
10-117	10-117 STORAGE	10	10	
10-118	10-118 STORAGE	10	10	
10-119	10-119 STORAGE	10	10	
10-120	10-120 STORAGE	10	10	
10-121	10-121 STORAGE	10	10	
10-122	10-122 STORAGE	10	10	
10-123	10-123 STORAGE	10	10	
10-124	10-124 STORAGE	10	10	
10-125	10-125 STORAGE	10	10	
10-126	10-126 STORAGE	10	10	
10-127	10-127 STORAGE	10	10	
10-128	10-128 STORAGE	10	10	
10-129	10-129 STORAGE	10	10	
10-130	10-130 STORAGE	10	10	
10-131	10-131 STORAGE	10	10	
10-132	10-132 STORAGE	10	10	
10-133	10-133 STORAGE	10	10	
10-134	10-134 STORAGE	10	10	
10-135	10-135 STORAGE	10	10	
10-136	10-136 STORAGE	10	10	
10-137	10-137 STORAGE	10	10	
10-138	10-138 STORAGE	10	10	
10-139	10-139 STORAGE	10	10	
10-140	10-140 STORAGE	10	10	
10-141	10-141 STORAGE	10	10	
10-142	10-142 STORAGE	10	10	
10-143	10-143 STORAGE	10	10	
10-144	10-144 STORAGE	10	10	
10-145	10-145 STORAGE	10	10	
10-146	10-146 STORAGE	10	10	
10-147	10-147 STORAGE	10	10	
10-148	10-148 STORAGE	10	10	
10-149	10-149 STORAGE	10	10	
10-150	10-150 STORAGE	10	10	
10-151	10-151 STORAGE	10	10	
10-152	10-152 STORAGE	10	10	
10-153	10-153 STORAGE	10	10	
10-154	10-154 STORAGE	10	10	
10-155	10-155 STORAGE	10	10	
10-156	10-156 STORAGE	10	10	
10-157	10-157 STORAGE	10	10	
10-158	10-158 STORAGE	10	10	
10-159	10-159 STORAGE	10	10	
10-160	10-160 STORAGE	10	10	
10-161	10-161 STORAGE	10	10	
10-162	10-162 STORAGE	10	10	
10-163	10-163 STORAGE	10	10	
10-164	10-164 STORAGE	10	10	
10-165	10-165 STORAGE	10	10	
10-166	10-166 STORAGE	10	10	
10-167	10-167 STORAGE	10	10	
10-168	10-168 STORAGE	10	10	
10-169	10-169 STORAGE	10	10	
10-170	10-170 STORAGE	10	10	
10-171	10-171 STORAGE	10	10	
10-172	10-172 STORAGE	10	10	
10-173	10-173 STORAGE	10	10	
10-174	10-174 STORAGE	10	10	
10-175	10-175 STORAGE	10	10	
10-176	10-176 STORAGE	10	10	
10-177	10-177 STORAGE	10	10	
10-178	10-178 STORAGE	10	10	
10-179	10-179 STORAGE	10	10	
10-180	10-180 STORAGE	10	10	
10-181	10-181 STORAGE	10	10	
10-182	10-182 STORAGE	10	10	
10-183	10-183 STORAGE	10	10	
10-184	10-184 STORAGE	10	10	
10-185	10-185 STORAGE	10	10	
10-186	10-186 STORAGE	10	10	
10-187	10-187 STORAGE	10	10	
10-188	10-188 STORAGE	10	10	
10-189	10-189 STORAGE	10	10	
10-190	10-190 STORAGE	10	10	
10-191	10-191 STORAGE	10	10	
10-192	10-192 STORAGE	10	10	
10-193	10-193 STORAGE	10	10	
10-194	10-194 STORAGE	10	10	
10-195	10-195 STORAGE	10	10	
10-196	10-196 STORAGE	10	10	
10-197	10-197 STORAGE	10	10	
10-198	10-198 STORAGE	10	10	
10-199	10-199 STORAGE	10	10	
10-200	10-200 STORAGE	10	10	
10-201	10-201 STORAGE	10	10	
10-202	10-202 STORAGE	10	10	
10-203	10-203 STORAGE	10	10	
10-204	10-204 STORAGE	10	10	
10-205	10-205 STORAGE	10	10	
10-206	10-206 STORAGE	10	10	
10-207	10-207 STORAGE	10	10	
10-208	10-208 STORAGE	10	10	
10-209	10-209 STORAGE	10	10	
10-210	10-210 STORAGE	10	10	
10-211	10-211 STORAGE	10	10	
10-212	10-212 STORAGE	10	10	
10-213	10-213 STORAGE	10	10	
10-214	10-214 STORAGE	10	10	
10-215	10-215 STORAGE	10	10	
10-216	10-216 STORAGE	10	10	
10-217	10-217 STORAGE	10	10	
10-218	10-218 STORAGE	10	10	
10-219	10-219 STORAGE	10	10	
10-220	10-220 STORAGE	10	10	
10-221	10-221 STORAGE	10	10	
10-222	10-222 STORAGE	10	10	
10-223	10-223 STORAGE	10	10	
10-224	10-224 STORAGE	10		



James R. Childers
Architects, Inc.
1000 W. 10th St., Suite 200
Tulsa, Oklahoma 74103
www.jrchilders.com

PROJ: 05-261-13

DATE: 12-14



CHEROKEE NATION REDBRID SMITH & ADDITION
SALLISAW, OKLAHOMA

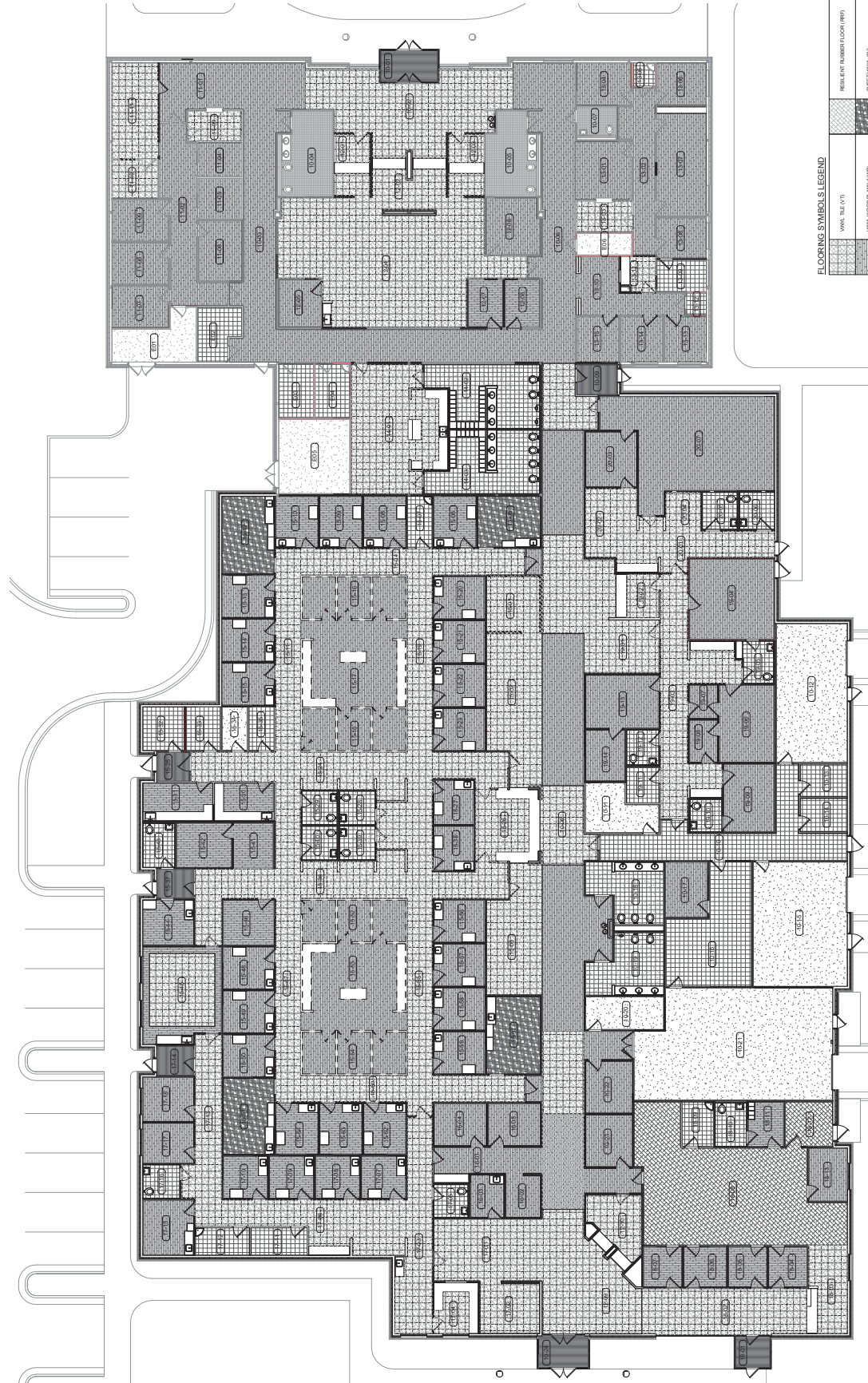
DESIGN
DOCUMENT
SUBMITTAL

NO.	DATE	DESCRIPTION

PROJECT NO. 05-261-13
DATE 12-14

A6.0

OVERALL FLOOR COVERING PLAN



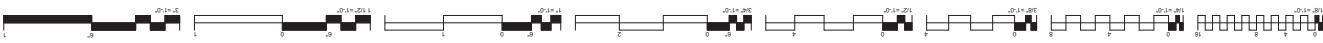
FLOORING SYMBOLS LEGEND

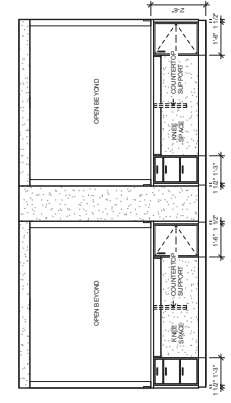
	VINYL TILE (VT)		RESILIENT FLOOR/STONE (RF)
	VINYL WOOD PLANK (VWP)		SHEET VINYL (SV)
	VINYL COMPOSITION TILE (VCT)		METAL TRANSITION
	CERAMIC TILE (CT)		RUBBER TRANSITION
	ENTRY MAT (EM)		SOLID SURFACE TRANSITION
	POLISHED CONCRETE (PC)		FLOOR DRAIN

- NOTES:
1. SEE ALL FLOOR FINISHES
2. FLOORING TO BE UNDER INTERNAL LINES AND TO BE SPACES

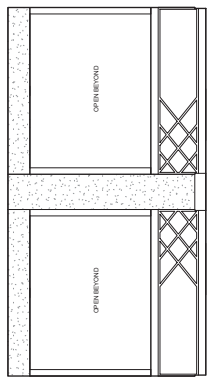


OVERALL FLOOR COVERING PLAN
3/32" = 1'-0"

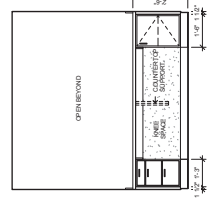




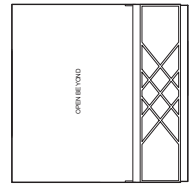
4 REGISTRATION
3/8" = 1'-0"
12-02



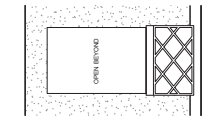
3 REGISTRATION
3/8" = 1'-0"
12-10



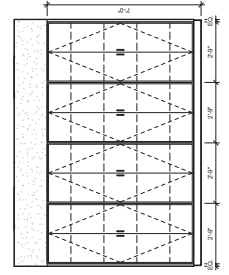
2 PSA & PBA
3/8" = 1'-0"
12-01 & 12-03



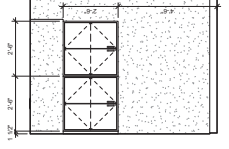
1 PSA & PBA
3/8" = 1'-0"
12-01 & 12-03



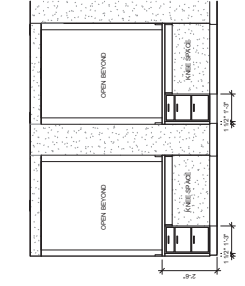
9 RECEPTION
3/8" = 1'-0"
13-11



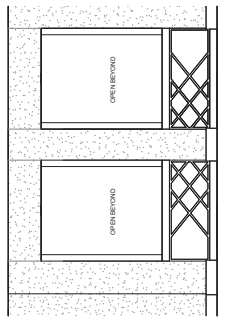
8 GROUP ROOM
3/8" = 1'-0"
13-07



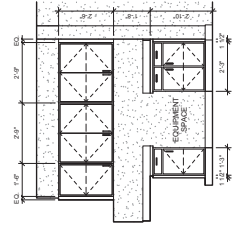
7 REGISTRATION
3/8" = 1'-0"
12-10



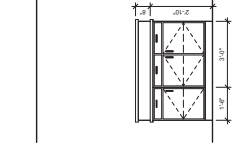
6 REGISTRATION
3/8" = 1'-0"
12-10



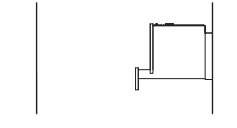
5 REGISTRATION
3/8" = 1'-0"
12-10



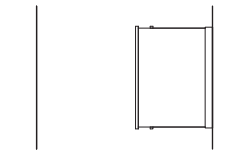
14 LOUNGE
3/8" = 1'-0"
14-01



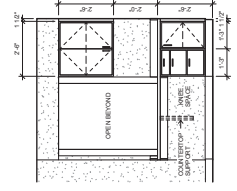
13 LOUNGE
3/8" = 1'-0"
14-01



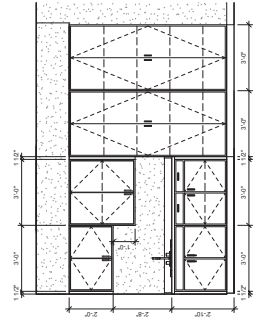
12 LOUNGE
3/8" = 1'-0"
14-01



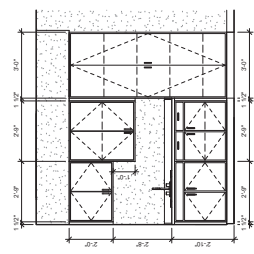
11 LOUNGE
3/8" = 1'-0"
14-01



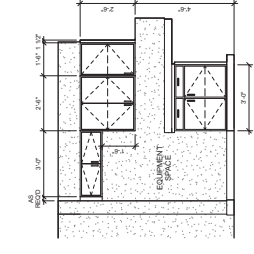
10 RECEPTION
3/8" = 1'-0"
13-11



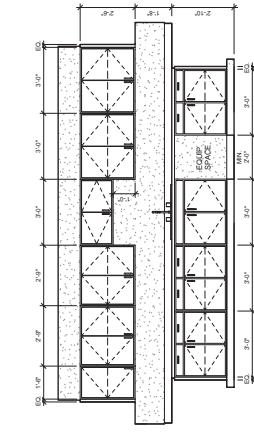
18 PROCEDURE & TREATMENT
3/8" = 1'-0"
15-02, 15-03 & 15-01



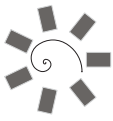
17 TREATMENT
3/8" = 1'-0"
15-05



16 LOUNGE
3/8" = 1'-0"
14-01



15 LOUNGE
3/8" = 1'-0"
14-01



James R. Childers
Architect, Inc.
1000 W. 10th St., Suite 200
Tulsa, Oklahoma 74103
www.jrchilders.com

PROJECT NO. 1000

DATE: 03/26/13



CHEROKEE NATION REDBRD SMITH & ADDITION
SALLISAW, OKLAHOMA

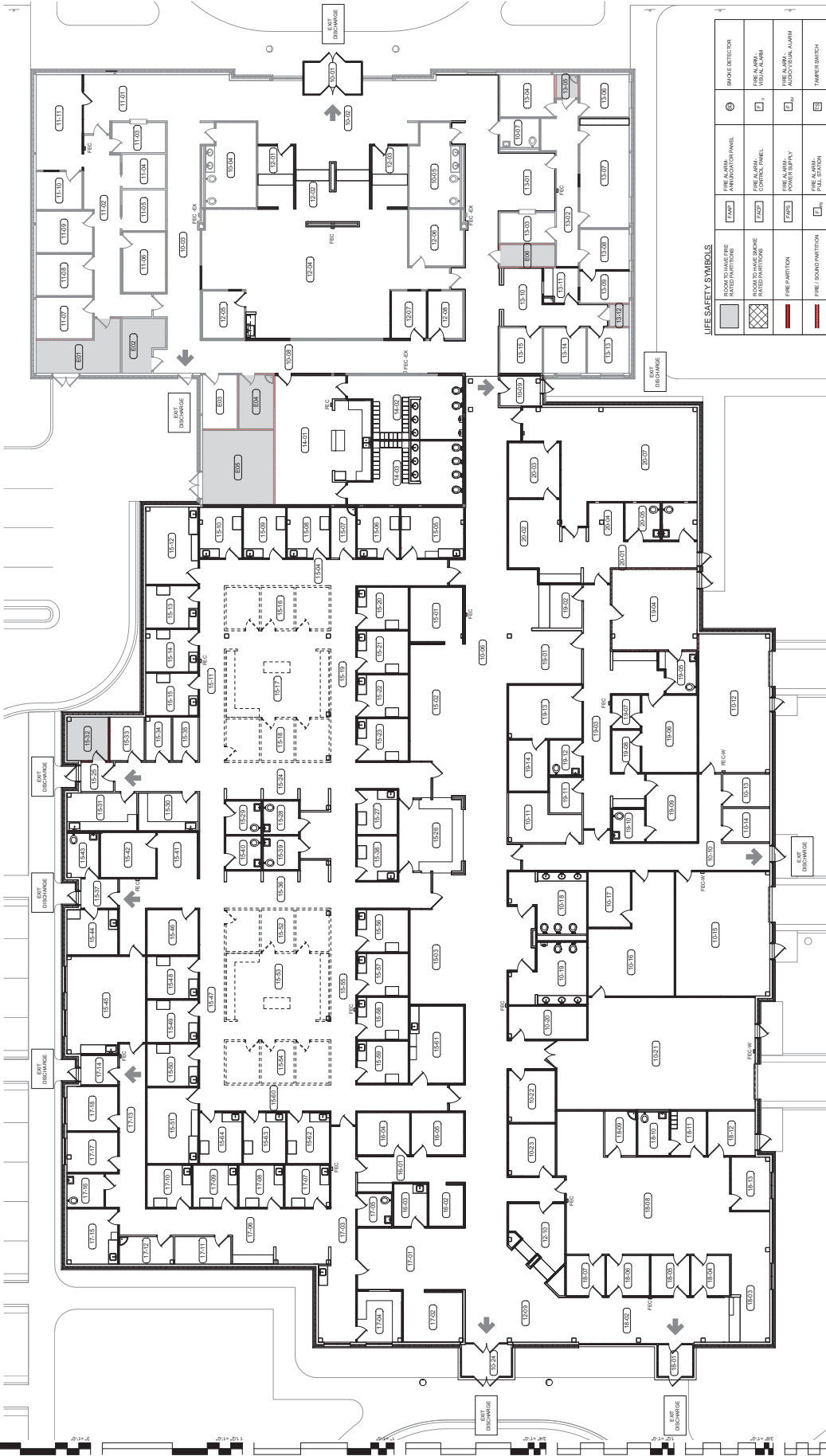
DESIGN
DOCUMENT
SUBMITAL

NO.	DATE	DESCRIPTION

DATE: 03/26/13
PROJECT NO.: 1000

A9.1

LIFE SAFETY PLAN



LIFE SAFETY SYMBOLS

	FIRE ALARM ANNUNCIATOR PANEL	SMOKE DETECTOR
	FIRE ALARM CONTROL PANEL	FIRE ALARM VIBRA ALARM
	FIRE ALARM POWER SUPPLY	FIRE ALARM AUTO-CANCEL ALARM
	FIRE ALARM FAULT INDICATOR	TAMPER SWITCH
	HALL LIGHT FIXTURE - EMERGENCY	FLOOR SWITCH
	EMERGENCY EXIT LIGHT	DOOR HOLDER
	EMERGENCY EXIT LIGHT	EXIT PATH
	EMERGENCY EXIT LIGHT	EMERGENCY EXIT LIGHT

LIFE SAFETY PLAN
3/32" = 1'-0"



James R. Childers
Architects, Inc.
1116 E. 10th Street
Tulsa, Oklahoma 74103
www.jrchilders.com

PROJECT NO. 102

CONTRACT NO. 002
Interior Logistics, Inc.
1116 E. 10th Street, RM. 100
Tulsa, Oklahoma 74103
www.interiorlogistics.com

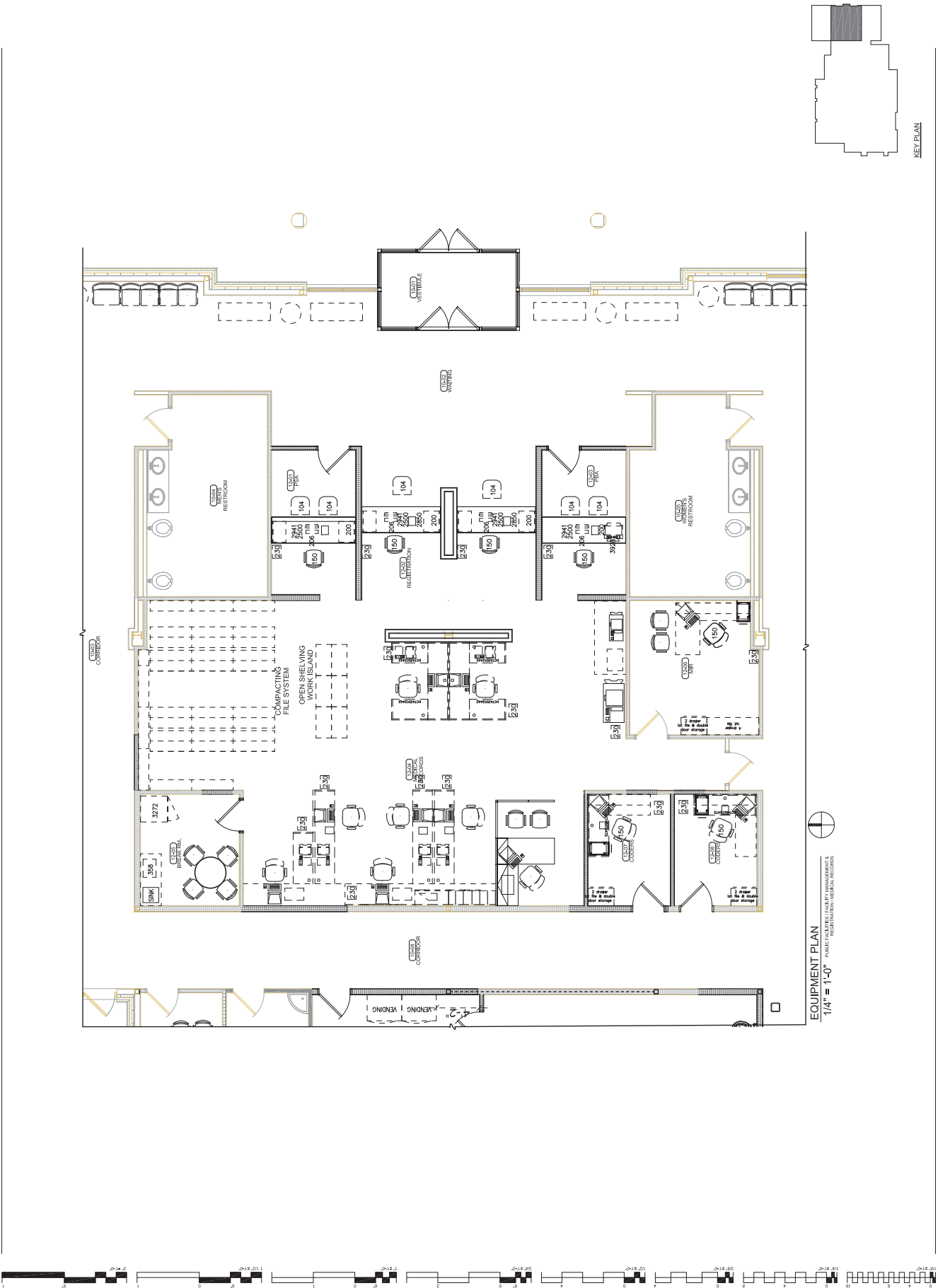


CHEROKEE NATION REDBRID SMITH
HEALTH CENTER ANNEX REMODEL &
ADDITION
SALLISAW, OKLAHOMA

PROJECT PHASE:
DESIGN
DEVELOPMENT
SUBMITTAL

DATE:	03-26-13
ISSUE NO.:	12-14
SHEET NUMBER: A10.2	

EQUIPMENT PLAN



EQUIPMENT PLAN
1/4" = 1'-0"
PUBLIC WORKS: FACILITY MANAGEMENT &
REGISTRATION/ARCHITECTURE

KEY PLAN



James R. Childers
Architects, Inc.
1314 S.W. 22nd Street
Fort Lauderdale, FL 33315
www.jrchilders.com



Interior Logistics, Inc.
www.interiorlogistics.com
1719 E. 19th Street, Box 300
Fort Lauderdale, FL 33315



CHEROKEE NATION REDBRID SMITH &
HEALTH CENTER ANNEX REMODEL &
ADDITION
SALLISAW, OKLAHOMA

PROJECT PHASE:
DESIGN DEVELOPMENT
SUBMITTAL

DATE:	03-26-13
PROJECT NUMBER:	A10.4

EQUIPMENT PLAN



EQUIPMENT PLAN
1/4" = 1'-0"

