

James R. Childers
Architect, Inc.
1000 W. 10th Street
Tulsa, Oklahoma 74103
www.jrchilders.com



CHEROKEE NATION REDBRID SMITH & ADDITION
SALLISAW, OKLAHOMA

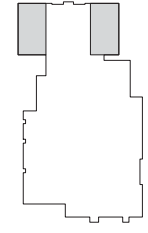
PROPOSED DESIGN
DOCUMENT SUBMITTAL

NO.	DATE	DESCRIPTION

DATE: 03-26-13
PROJECT NUMBER: 12-14

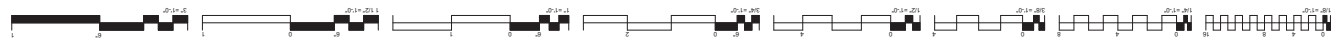
PROJECT TITLE: ACP-1

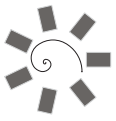
ACCENT COLOR PLAN



ACCENT COLOR PLAN
1/4" = 1'-0"

ACCENT COLOR PLAN
1/4" = 1'-0"





James R. Childers
Architect, Inc.
1000 West 10th Street
Tulsa, Oklahoma 74106
www.jrchilders.com



CHEROKEE NATION REDBIRD SMITH &
HEALTH CENTER ANNEX REMODEL &
ADDITION
SALLISAW, OKLAHOMA

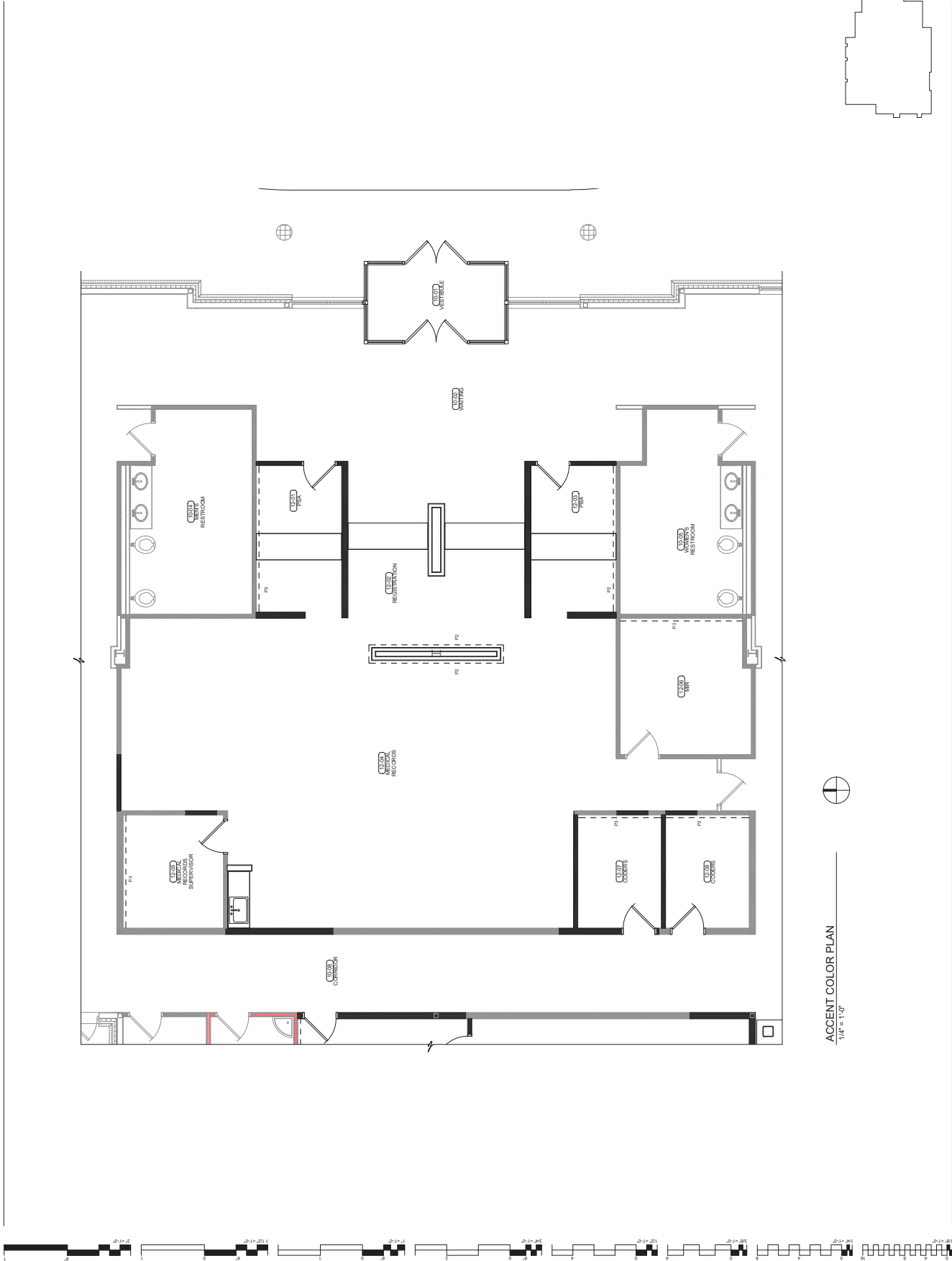
PROJECT NO. 12345
DESIGN DEVELOPMENT
SUBMITTAL

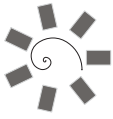
NO.	DATE	DESCRIPTION

DATE: 03-26-13
DRAWN BY: 12345

PROJECT: ACP-2

ACCENT COLOR PLAN





James R. Childers
Architect, Inc.
1000 W. 10th St., Suite 200
Tulsa, Oklahoma 74103
www.jrchilders.com



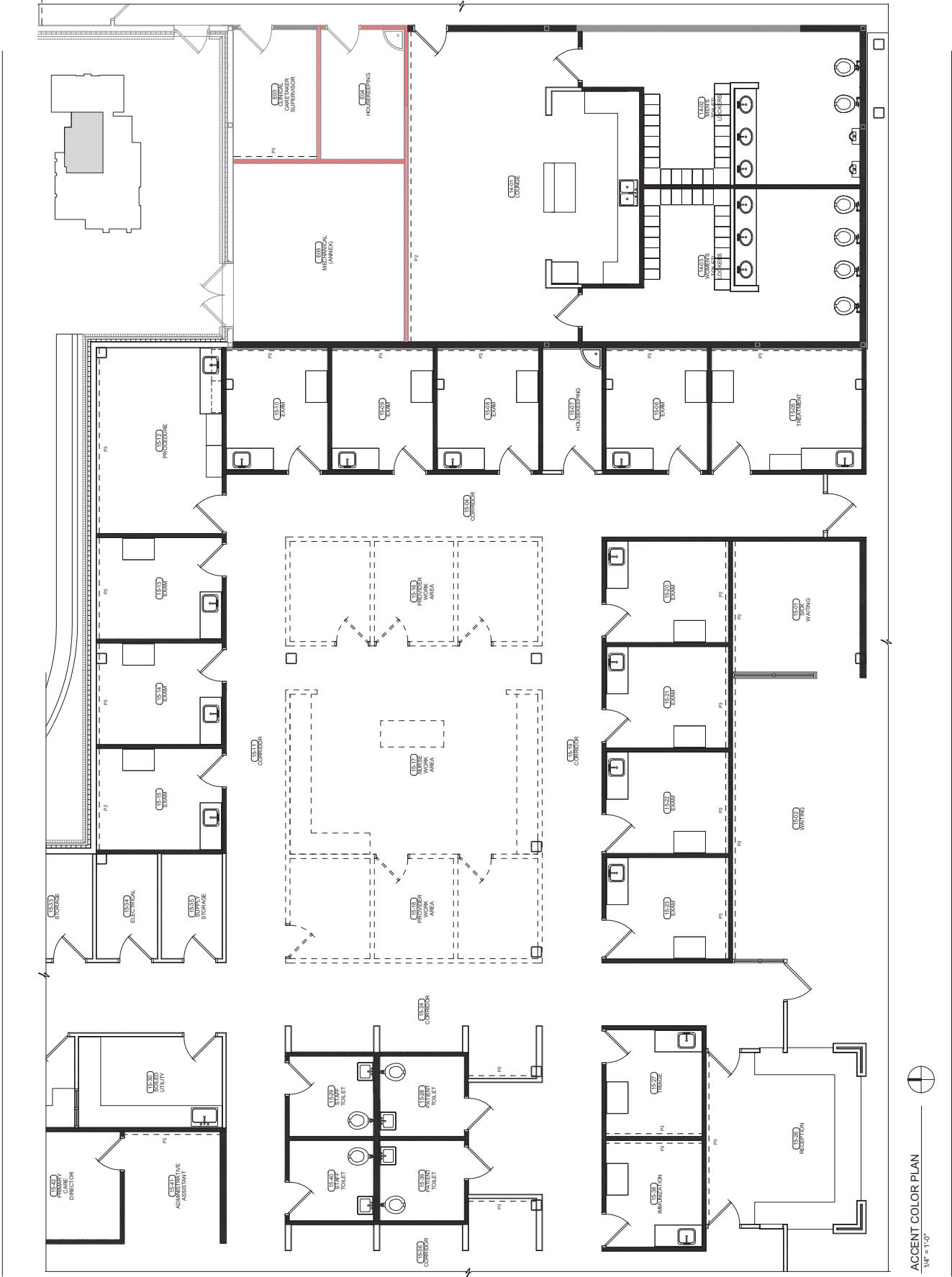
CHEROKEE NATION REDBIRD SMITH & ADDITION
SALLISAW, OKLAHOMA

PROJECT NO. DESIGN DEVELOPMENT SUBMITTAL

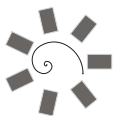
NO.	DATE	DESCRIPTION
1		
2		
3		
4		
5		
6		
7		
8		
9		
10		

DATE: 03-26-13 DRAWING NO.: 12-14

ACP-3
ACCENT COLOR PLAN



ACCENT COLOR PLAN
1/4" = 1'-0"



James R. Childers
Architect, Inc.
1000 W. 12th Street
Tulsa, Oklahoma 74103
www.jrchilders.com



CHEROKEE NATION REDBIRD SMITH & ADDITION
SALLISAW, OKLAHOMA

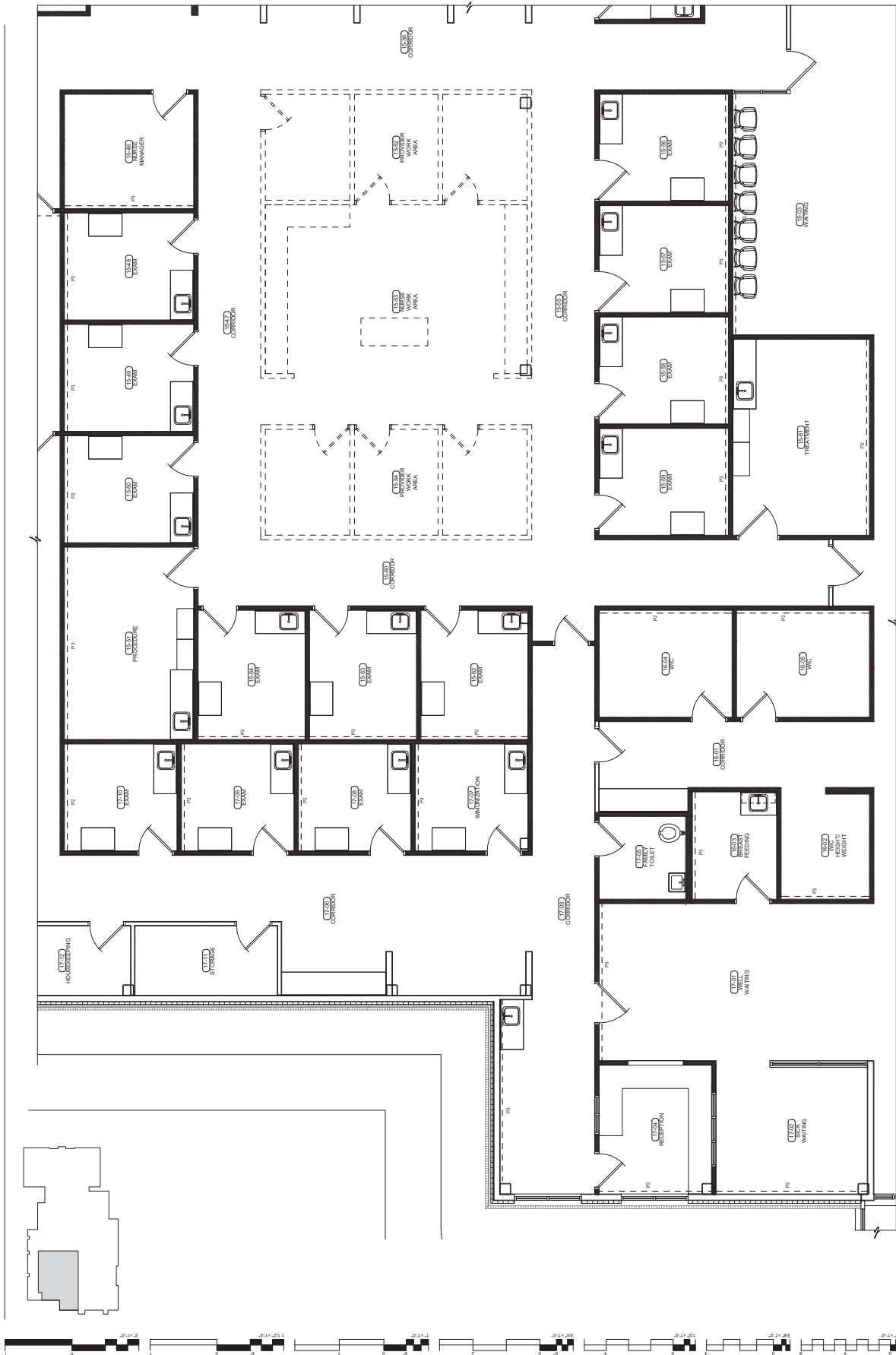
PROPOSED DESIGN
DOCUMENT
SUBMITTAL

NO.	DATE	DESCRIPTION

DATE: 03-26-13
PROJECT NUMBER: 12-14

ACP-4

ACCENT COLOR PLAN



ACCENT COLOR PLAN
1/8" = 1'-0"





James R. Childers
Architect, Inc.
1000 W. 10th St., Suite 200
Tulsa, Oklahoma 74103
www.jrchilders.com

PROFESSIONAL SEAL

REGISTERED ARCHITECT



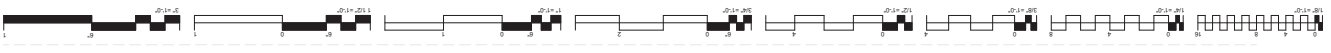
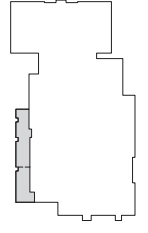
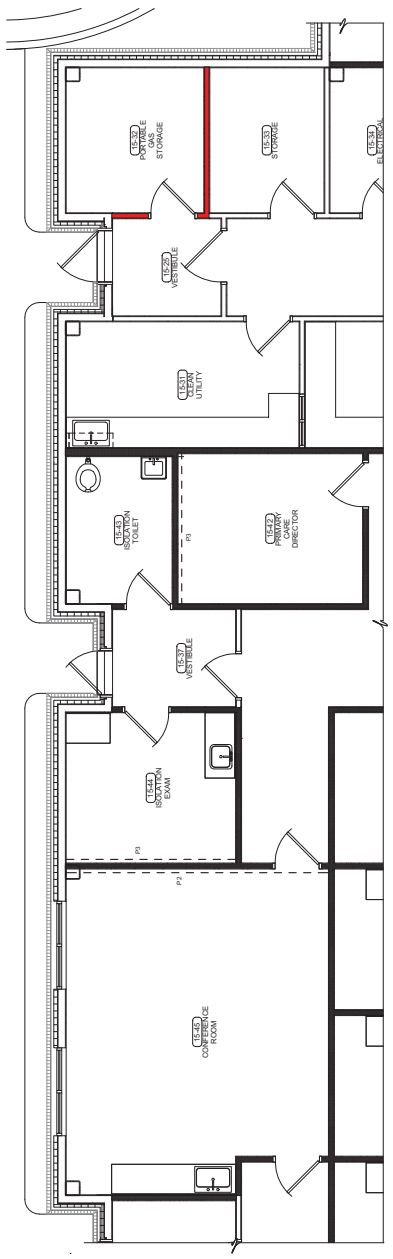
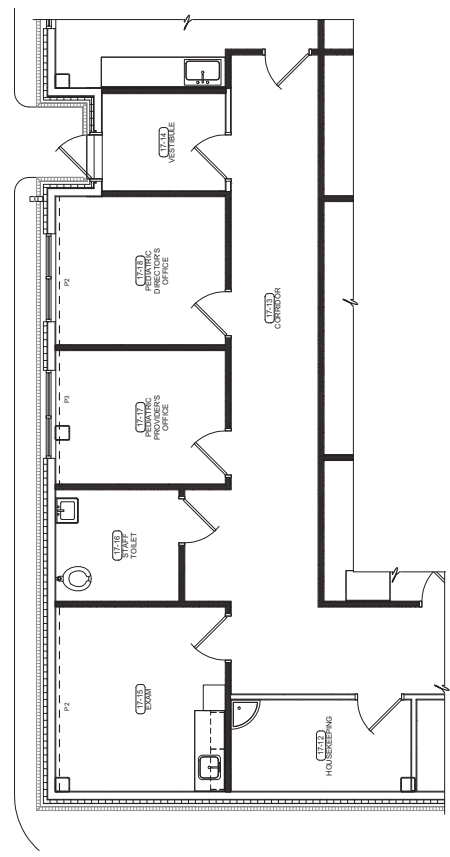
CHEROKEE NATION REDBRID SMITH & ADDITION
SALLISAW, OKLAHOMA

PROPOSED DESIGN DOCUMENT SUBMITTAL

NO.	DATE	DESCRIPTION

DATE: 03-26-13
PROJECT NUMBER: 12-14

ACP-5
ACCENT COLOR PLAN





James R. Childers
Architect, Inc.
P.O. Box 100
Tulsa, Oklahoma 74101
www.jrchilders.com



CHEROKEE NATION REDBIRD SMITH &
HEALTH CENTER ANNEX REMODEL &
ADDITION
SALLISAW, OKLAHOMA

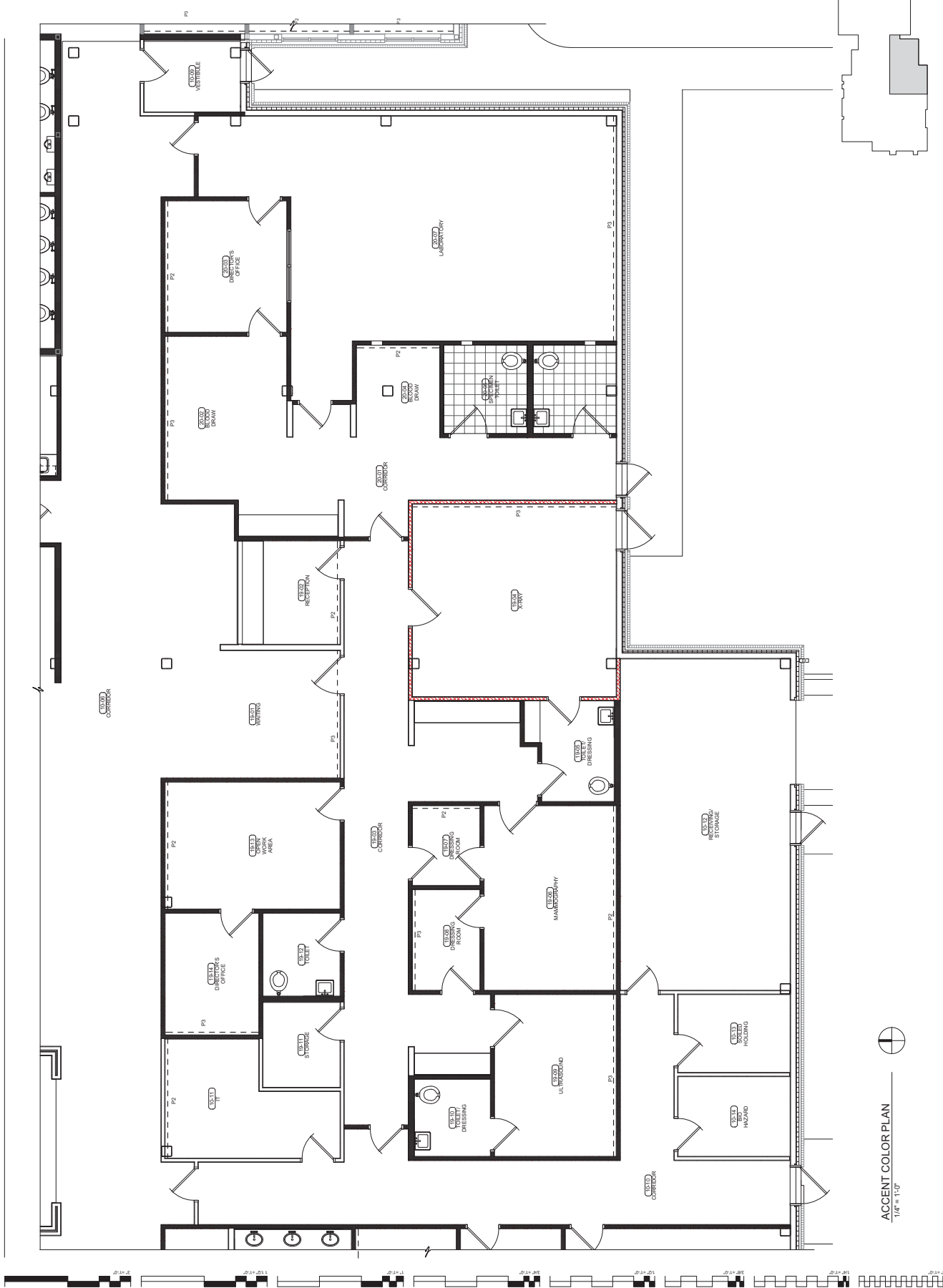
PROPOSED: DESIGN
DOCUMENT SUBMITTA

NO.	DATE	DESCRIPTION

DATE: 03-26-13
PROJECT NUMBER: 12-14

ACP-7

ACCENT COLOR PLAN



ACCENT COLOR PLAN
1/4" = 1'-0"



James R. Childers
Architect, Inc.
1000 W. 10th Street
Tulsa, Oklahoma 74107
www.jrchilders.com

FOUNDATION PLAN

Myers-Beatty
Engineering, PLLC
OK CA 4899
2411 Frytown Road, Suite 10
Tulsa, Oklahoma 74107
PH (918) 442-7443 FAX (918) 442-4443
www.myers-beatty.com



CHEROKEE NATION REDBIRD SMITH &
ADDITION
Enter address here

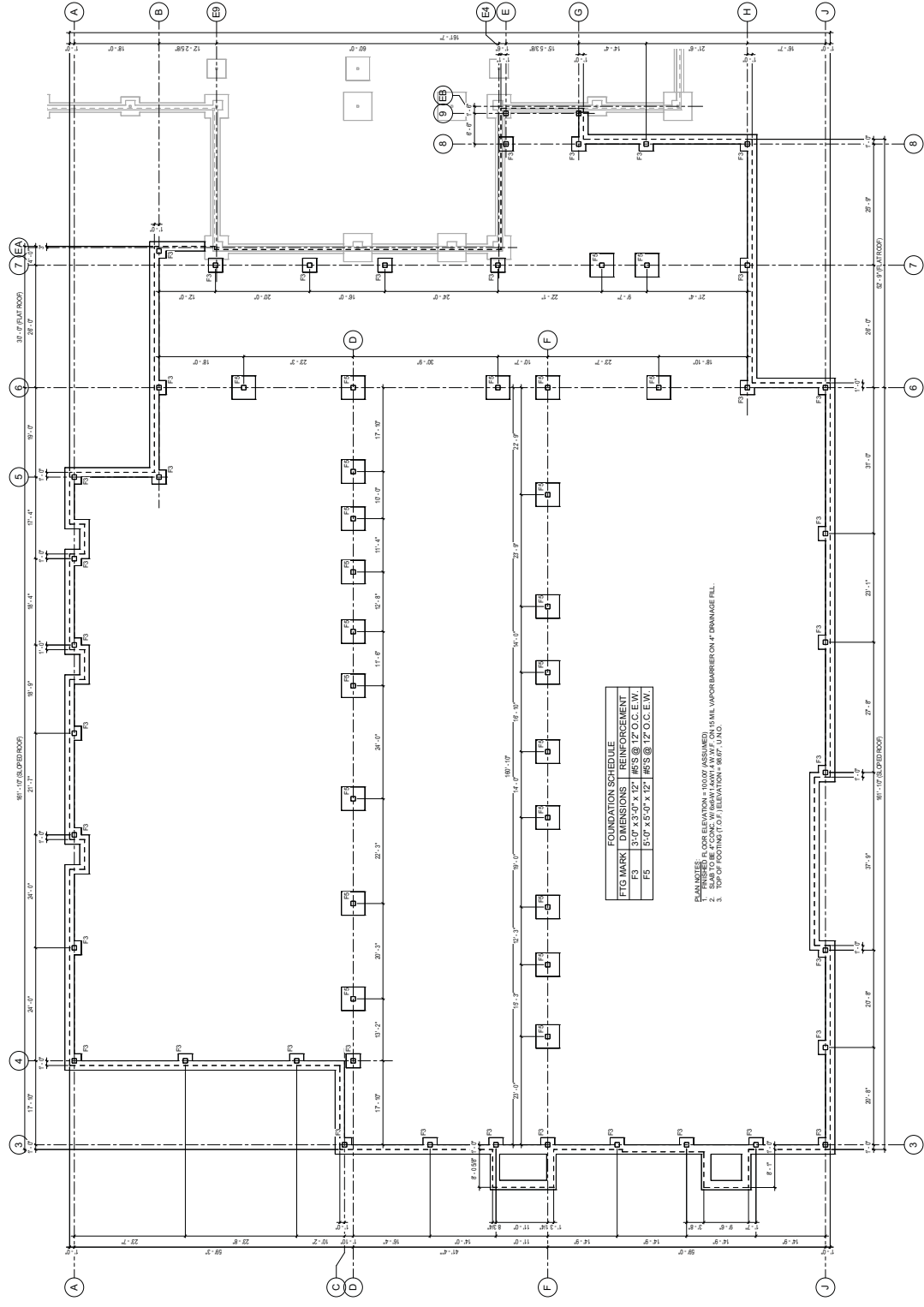
PROVIDE:
DESIGN
DOCUMENT
SUBMITTAL

DATE	DESCRIPTION

DATE: 03/26/13
SCALE: 1/8" = 1'-0"

PROJECT: S1.1

FOUNDATION PLAN



1 FOUNDATION PLAN
3/22 = 1'-0"



James R. Childers
Architect, Inc.
1001 W. 10th St., Suite 200
Tulsa, Oklahoma 74103
www.jrchilders.com

PROJECT NO. 1001
DATE: 03/26/13

Myers-Beatty
Engineering, PLLC
OK CA 4899
2411 Fryersville Road, Suite 200
Tulsa, Oklahoma 74129
(918) 432-7443
www.myers-engr.com



CHEROKEE NATION REDBIRD SMITH &
ADDITION
Enter address here

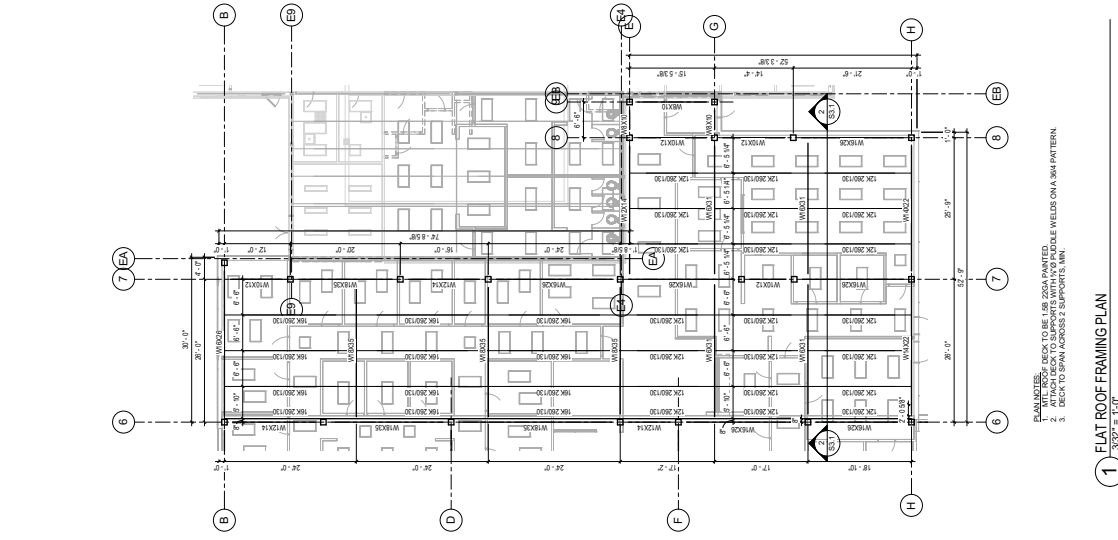
PROJECT NO. 1001
DATE: 03/26/13
DESIGN
DATE: 03/26/13
SUBMITTAL

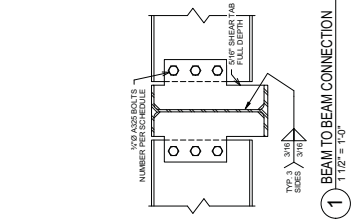
NO.	DESCRIPTION
1	FLAT ROOF FRAMING PLAN
2	SLOPED ROOF FRAMING PLAN

03/26/13 12:14

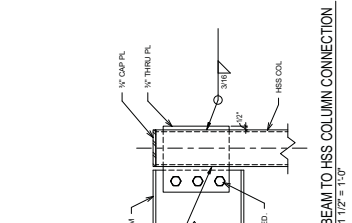
S2.1

FRAMING PLANS

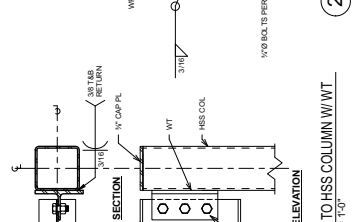




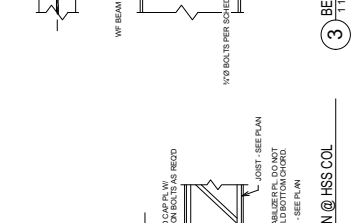
1 BEAM TO BEAM CONNECTION
1 1/2" = 1'-0"



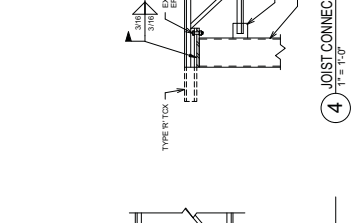
2 BEAM TO HSS COLUMN CONNECTION
1 1/2" = 1'-0"



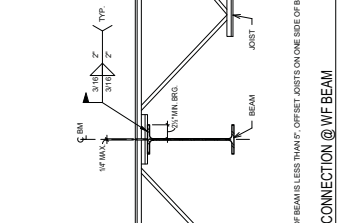
3 BEAM TO HSS COLUMN W/ WT
1 1/2" = 1'-0"



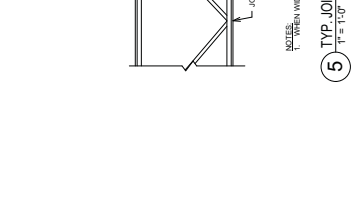
4 JOIST CONNECTION @ HSS COL
1" = 1'-0"



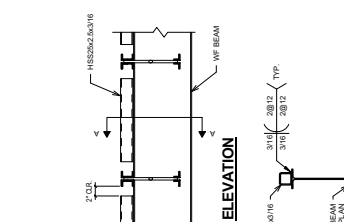
5 TYP. JOIST CONNECTION @ WF BEAM
1" = 1'-0"



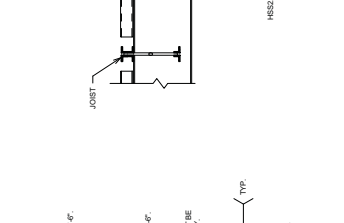
6 TYP. DIAPHRAGM COLLECTOR @ WF BEAM
1" = 1'-0"



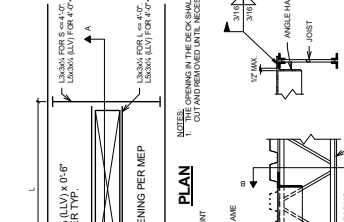
7 TYP. ROOF OPENING FOR JOIST
1" = 1'-0"



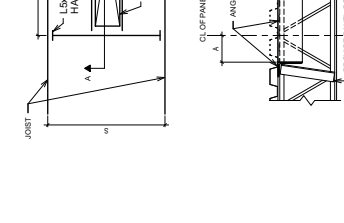
8 TYP. ROOF OPENING FOR JOIST
1" = 1'-0"



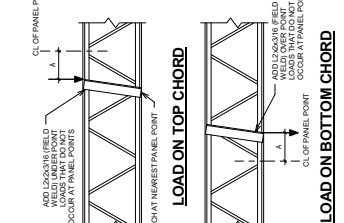
9 TYP. PANEL POINT REINFORCEMENT
1" = 1'-0"



10 BOLT SCHEDULE
1" = 1'-0"



SECTION A-A
1" = 1'-0"



SECTION B-B
1" = 1'-0"



SECTION A-A
1" = 1'-0"



SECTION B-B
1" = 1'-0"

BOLT SCHEDULE	ROWS OF BOLTS
8" & 10" BEAMS	2 ROWS
12" & 14" BEAMS	3 ROWS
16" BEAMS	4 ROWS
18" & 21" BEAMS	5 ROWS
24" BEAMS	6 ROWS
27" BEAMS	7 ROWS
30" BEAMS	8 ROWS
36" BEAMS	9 ROWS

BOLTS TO BE 1/2" DIA. UNFIN.

NOTES:
1. DIAGONAL BRACE IS NOT REQUIRED FOR "X" LESS THAN THREE INCHES.
2. HEAVY PIPES, WHICH UNITS HEAVY LIGHTS OR AT ANY OTHER CONCENTRATED LOADS AND AS NOTED ELSEWHERE IN THE STRUCTURAL DRAWINGS.

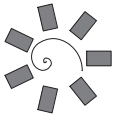
7 TYP. PANEL POINT REINFORCEMENT
1" = 1'-0"

8 TYP. ROOF OPENING FOR JOIST
1" = 1'-0"

SECTION B-B
1" = 1'-0"

SECTION A-A
1" = 1'-0"

6 TYP. DIAPHRAGM COLLECTOR @ WF BEAM
1" = 1'-0"



James R. Childers
Architect, Inc.
1010 S. W. 10th St., Suite 200
Tulsa, Oklahoma 74106
www.jrch.com

PROFESSIONAL SEAL

CONTRACTOR SEAL



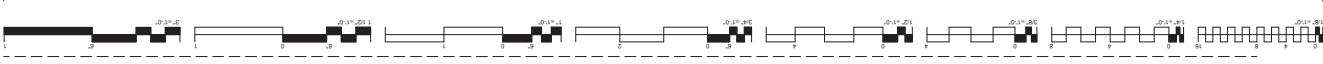
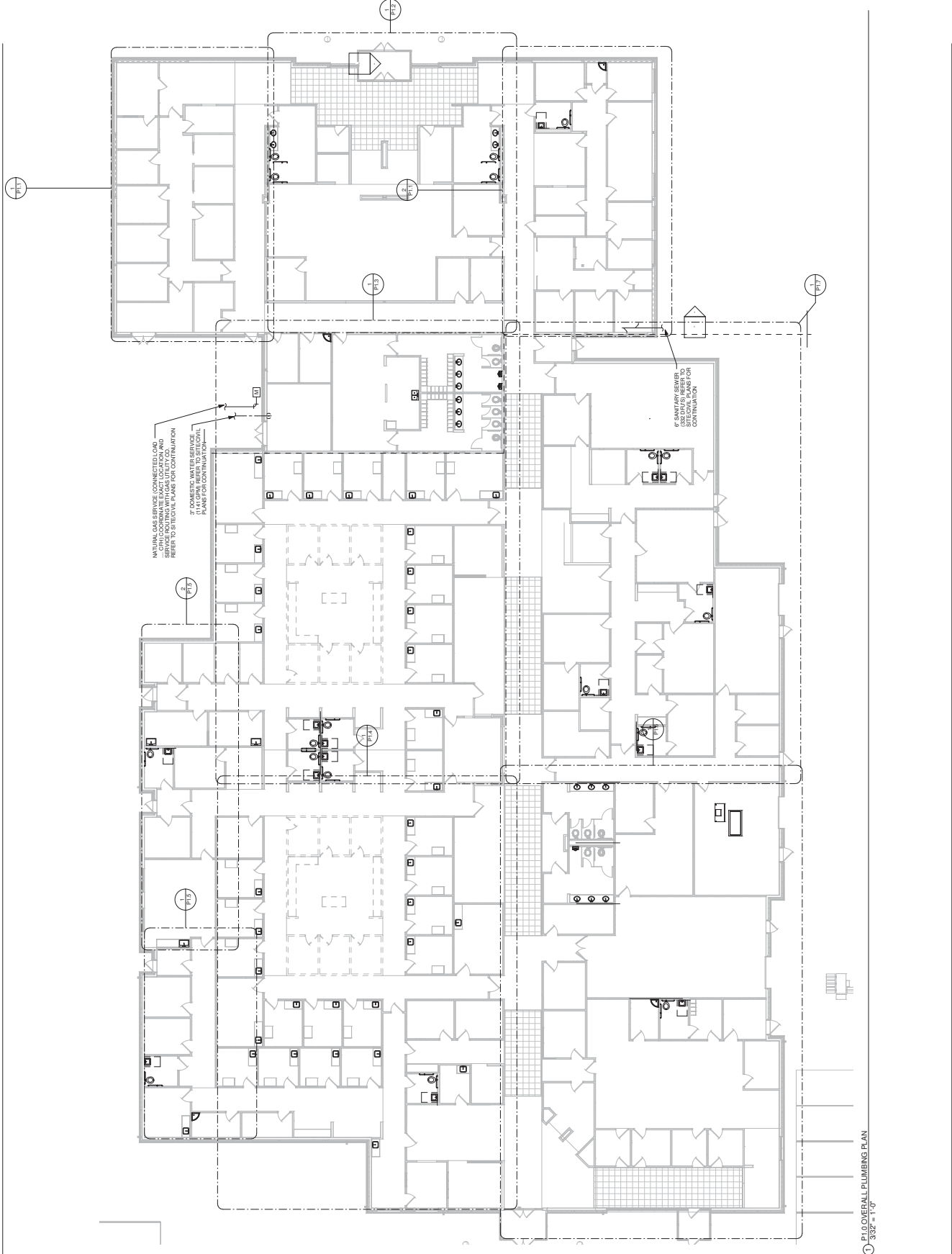
CHEROKEE NATION REDBIRD SMITH & ADDITION
SALLISAW, OKLAHOMA

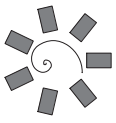
PROJECT: DESIGN DEVELOPMENT SUBMITTAL

NO.	DATE	DESCRIPTION

DATE: 02/28/13
SCALE: 1/2" = 1'-0"

P1.0
OVERALL PLUMBING PLAN





**James R. Childers
Architect, Inc.**
1000 North Lincoln Avenue
Tulsa, Oklahoma 74103
www.jrchitect.com

PROFESSIONAL SEAL

CONTRACTOR SEAL



SALLISAW, OKLAHOMA
CHEROKEE NATION ANNEX REMODEL & ADDITION

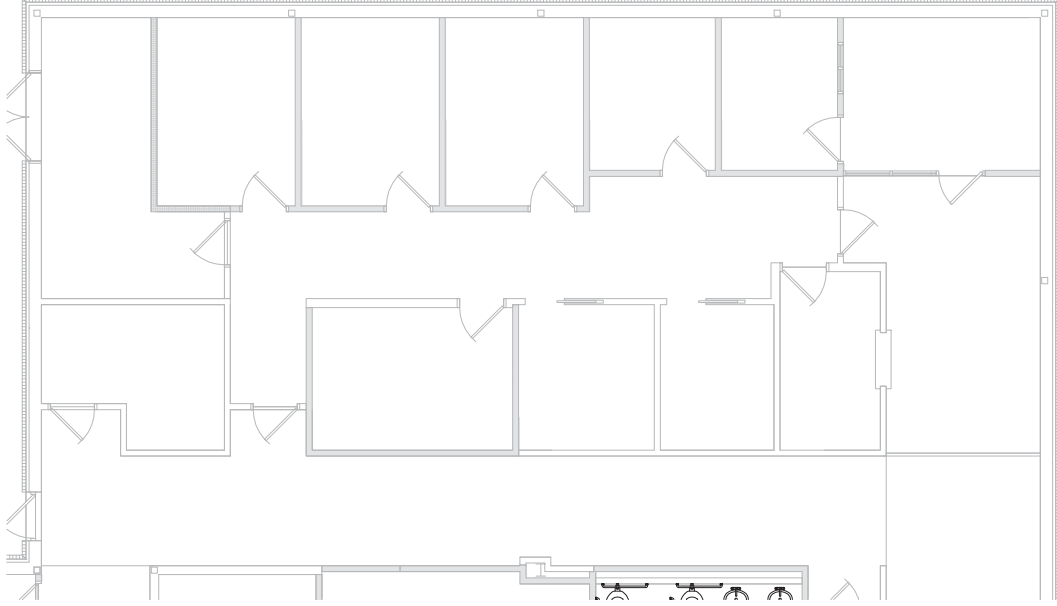
PROJECT NO. 002813
DESIGN DOCUMENT SUBMITTAL

NO.	DATE	DESCRIPTION

DATE: 02/28/13
DRAWING NO.: 1.2-14
PROJECT NO.: 002813

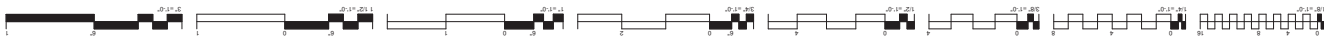
P1.1

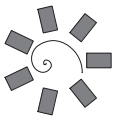
ENLARGED PLUMBING PLAN



① P1.1 ENLARGED PLUMBING PLAN
1/4" = 1'-0"

② P1.1 ENLARGED PLUMBING PLAN
1/4" = 1'-0"





James R. Childers
Architect, Inc.
1010 S. W. 10th Ave., Suite 200
Tulsa, Oklahoma 74106
www.jrchildersarchitect.com

PROFESSIONAL SEAL

CONTRACTOR SEAL



SALLISAW, OKLAHOMA
CHEROKEE NATION REDBIRD SMITH & ADDITION

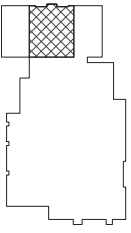
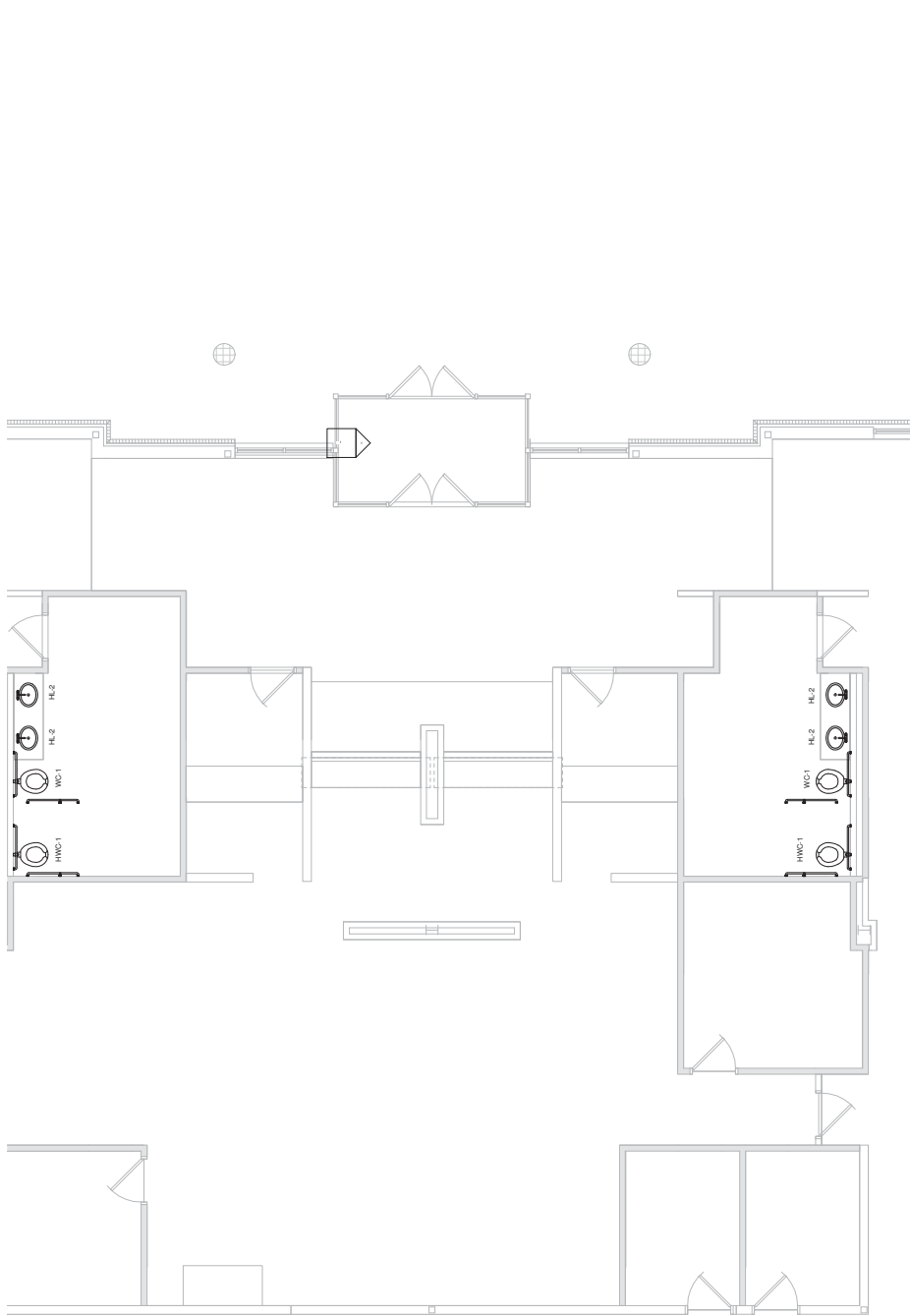
PROJECT NO. DESIGN DEVELOPMENT SUBMITTAL

NO.	DATE	DESCRIPTION
1		
2		
3		
4		
5		
6		
7		
8		
9		
10		

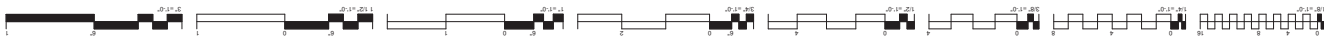
DATE: 02/28/13
DRAWING NO.: 1.2-14
SHEET NUMBER

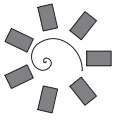
P1.2

ENLARGED PLUMBING PLAN



① P1.2 ENLARGED PLUMBING PLAN
1/8" = 1'-0"





**James R. Childers
Architect, Inc.**
1000 S. W. 10th St.
Tulsa, Oklahoma 74106
www.jrchildersarchitect.com

PROFESSIONAL SEAL

CONTRACTOR SEAL



CHEROKEE NATION ANNEX REMODEL & ADDITION
SALLISAW, OKLAHOMA

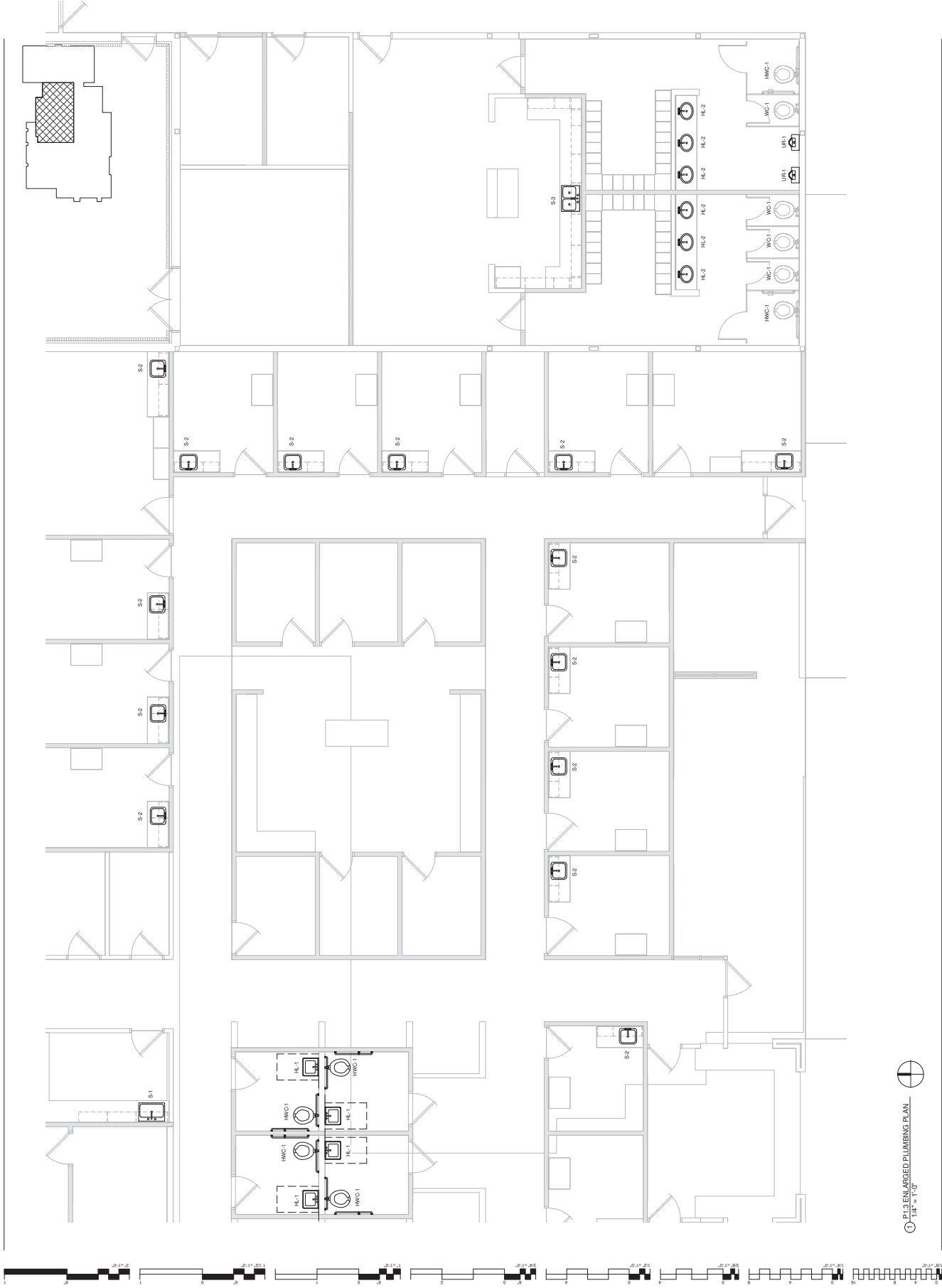
PROPOSED
DESIGN
DOCUMENT
SUBMITTAL

NO.	DATE	DESCRIPTION

DATE: 03/28/13
DRAWING: 1.2-14
PROJECT: CHEROKEE NATION ANNEX

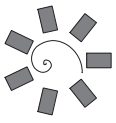
P1.3

ENLARGED
PLUMBING PLAN



1/4" = 1'-0"
ENLARGED PLUMBING PLAN





**James R. Childers
Architect, Inc.**
1000 North Central
Ave., Suite 200
Tulsa, Oklahoma 74103
www.jrchitect.com

PROFESSIONAL SEAL

CONTRACTOR SEAL



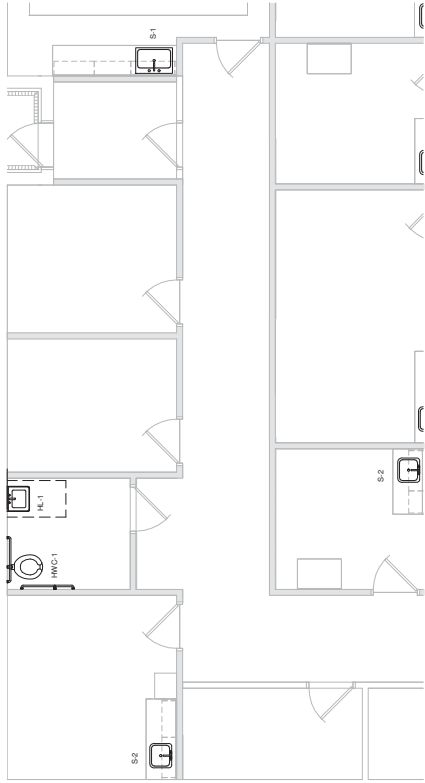
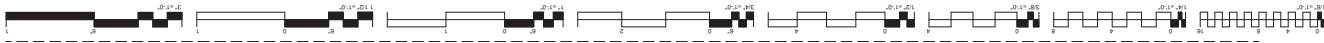
SALLISAW, OKLAHOMA
**CHEROKEE NATION REDBIRD SMITH &
ADDITION**

PROPOSED
DESIGN
DEVELOPMENT
SUBMITTAL

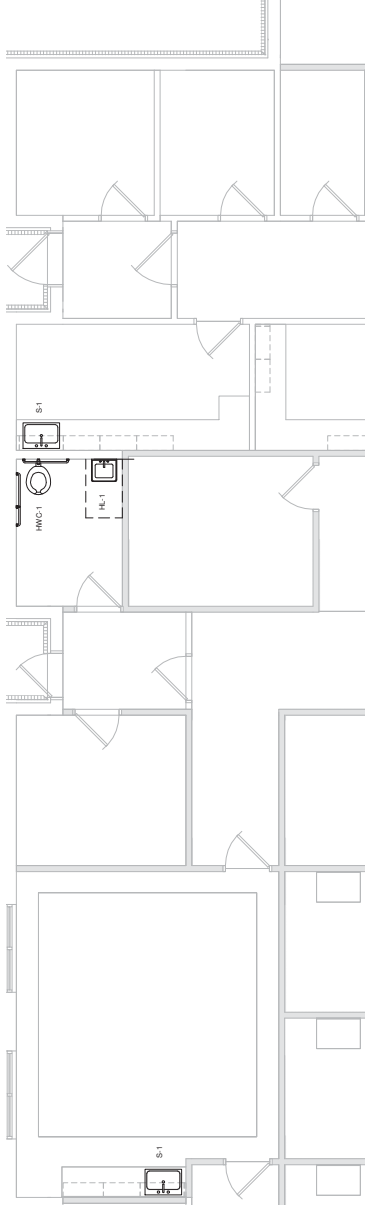
NO.	DATE	DESCRIPTION
1		
2		
3		
4		
5		
6		
7		
8		
9		
10		

DATE: 02/28/13
DRAWN BY: JCS
PROJECT NO.: 12-14

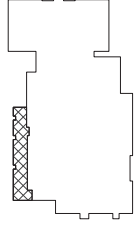
P1.5
ENLARGED
PLUMBING PLAN

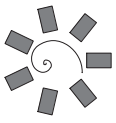


① P1.5 ENLARGED PLUMBING PLAN
1/4" = 1'-0"



② P1.5 ENLARGED PLUMBING PLAN
1/4" = 1'-0"





James R. Childers
Architect, Inc.
1000 North Lincoln Avenue, Suite 200
Tulsa, Oklahoma 74103
www.jrchilders.com

PROFESSIONAL SEAL

CONTRACTOR SEAL



SALLISAW, OKLAHOMA
CHEROKEE NATION REDBIRD SMITH &
ADDITION

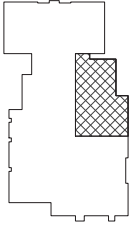
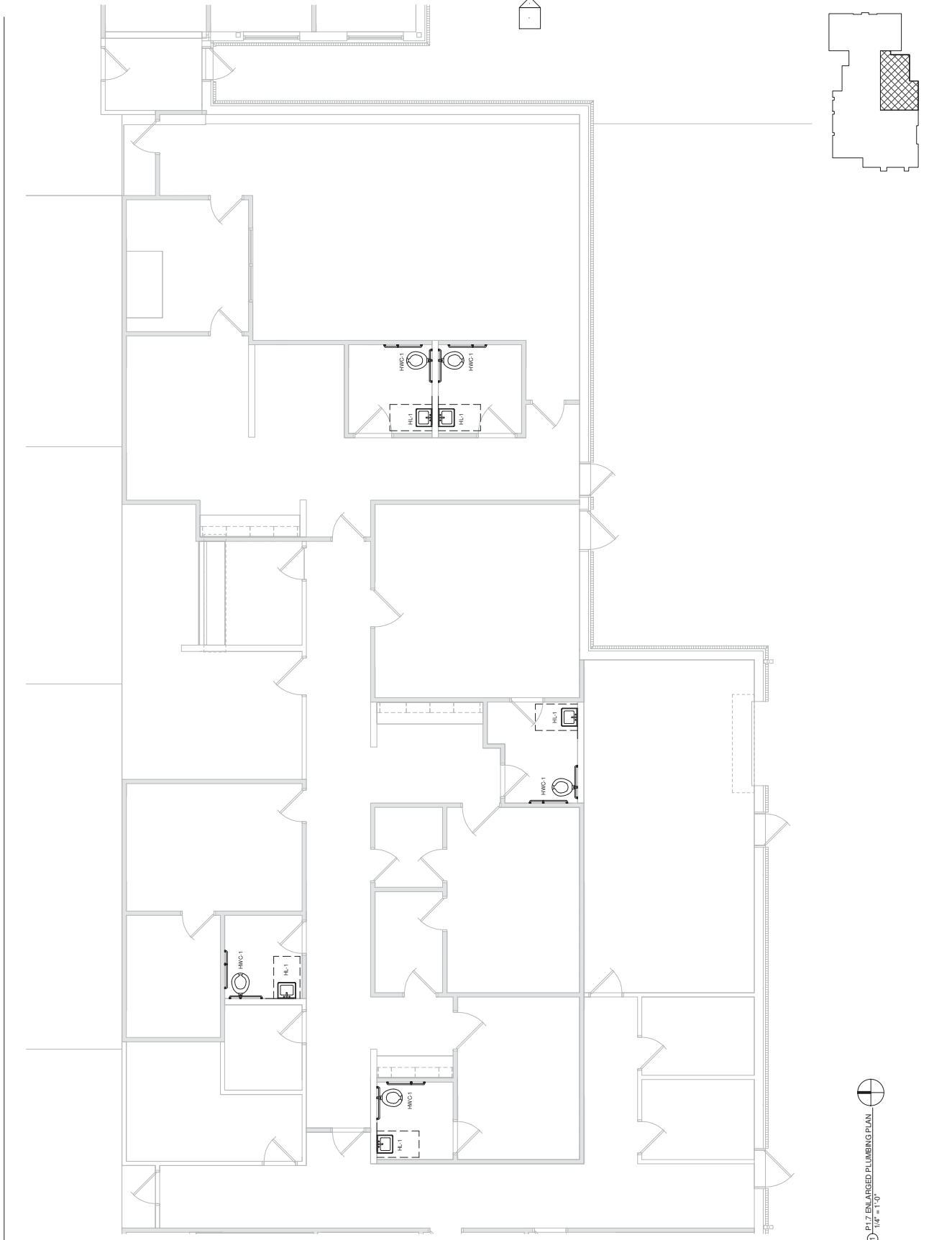
PROJECT NO. DESIGN DEVELOPMENT SUBMITTAL

NO.	DATE	DESCRIPTION
1		
2		
3		
4		
5		
6		
7		
8		
9		
10		
11		
12		
13		
14		
15		
16		
17		
18		
19		
20		
21		
22		
23		
24		
25		
26		
27		
28		
29		
30		
31		
32		
33		
34		
35		
36		
37		
38		
39		
40		
41		
42		
43		
44		
45		
46		
47		
48		
49		
50		
51		
52		
53		
54		
55		
56		
57		
58		
59		
60		
61		
62		
63		
64		
65		
66		
67		
68		
69		
70		
71		
72		
73		
74		
75		
76		
77		
78		
79		
80		
81		
82		
83		
84		
85		
86		
87		
88		
89		
90		
91		
92		
93		
94		
95		
96		
97		
98		
99		
100		

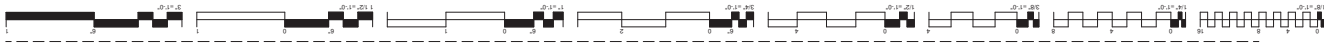
DATE: 03-28-13
DRAWING NO.: 1.2-14
SHEET NUMBER:

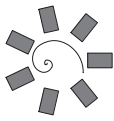
P1.7

ENLARGED PLUMBING PLAN



1.7 ENLARGED PLUMBING PLAN
1/4" = 1'-0"





James R. Childers
Architect, Inc.
1711 South Blvd., Suite 200
Tomball, TX 77375
www.jrchilders.com

PROFESSIONAL SEAL

CONTRACT NO. 0000



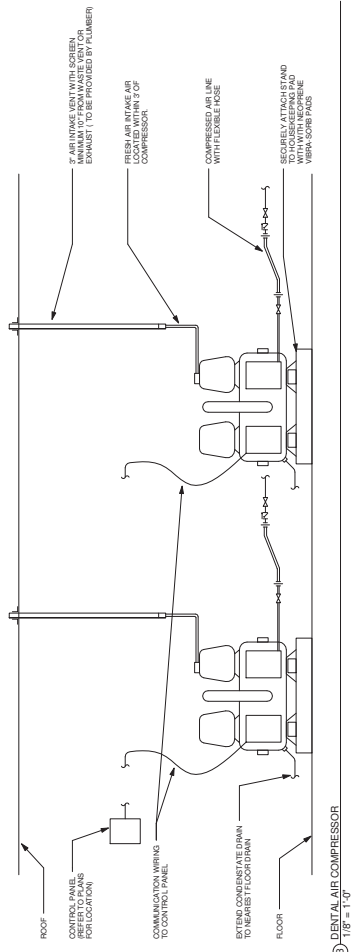
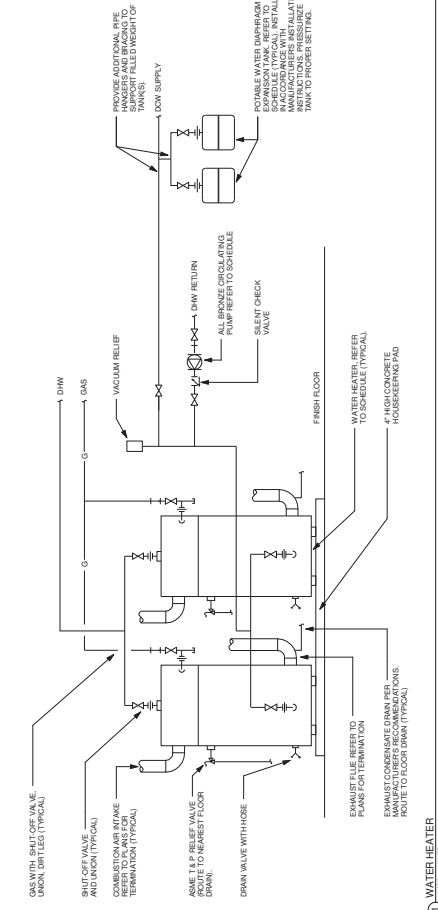
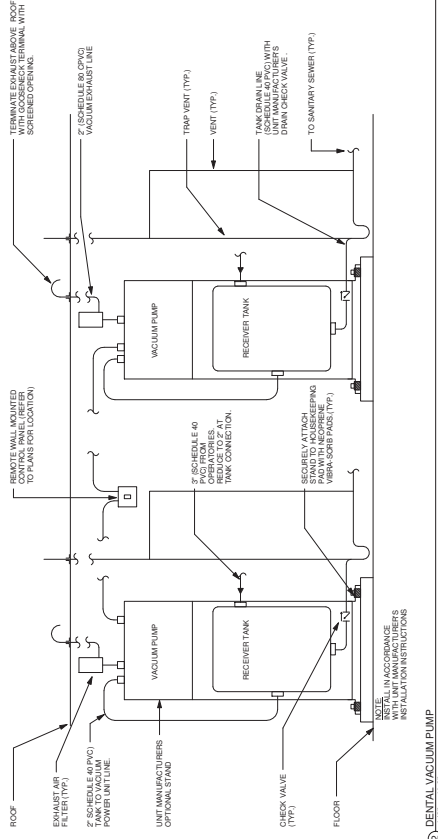
CHEROKEE NATION ANNEX REMODEL & ADDITION
SALLISAW, OKLAHOMA

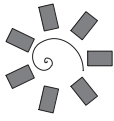
PROJECT NO. DESIGN DEVELOPMENT SUBMITTAL

NO.	DATE	DESCRIPTION
1		
2		
3		
4		
5		
6		
7		

DATE: 02/28/13
DRAWING NO.: 1.25-14
PROJECT NO.: P3.1

PLUMBING DETAILS





James R. Childers
Architect, Inc.
1710 GARDEN AVENUE, SUITE 200
ANN ARBOR, MI 48106
734.769.0000
www.jrchilders.com

PROFESSIONAL SEAL

CONTRACTOR SEAL



HEALTH CENTER ANNEX REMODEL & ADDITION
SALLISAW, OKLAHOMA

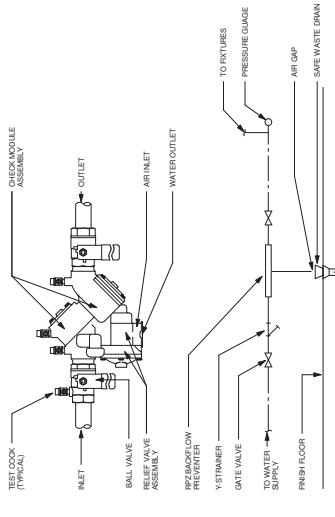
PROVISIONS
DESIGN DEVELOPMENT
SUBMITTAL

NO.	DATE	DESCRIPTION
1	02/28/13	ISSUED FOR PERMITS
2	02/28/13	ISSUED FOR PERMITS
3	02/28/13	ISSUED FOR PERMITS
4	02/28/13	ISSUED FOR PERMITS
5	02/28/13	ISSUED FOR PERMITS
6	02/28/13	ISSUED FOR PERMITS
7	02/28/13	ISSUED FOR PERMITS

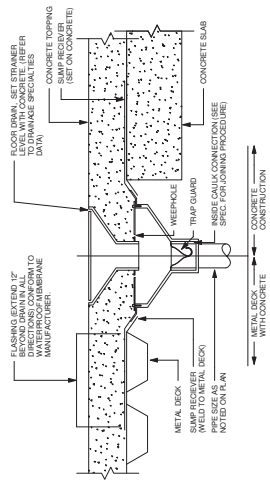
DATE: 02/28/13
SCALE: 1/2" = 1'-0"

P.32

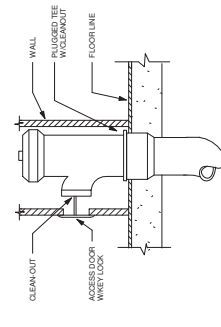
PLUMBING DETAILS



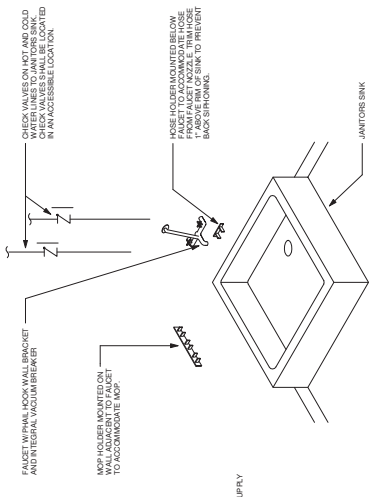
1 BACKFLOW PREVENTER
1/2" = 1'-0"



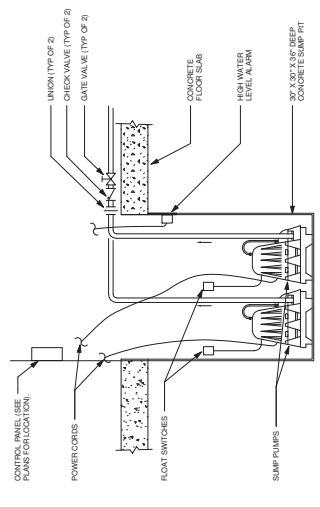
2 FLOOR DRAIN
1/8" = 1'-0"



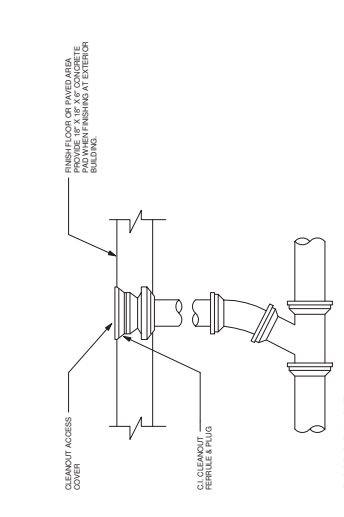
3 WALL CLEAN OUT
1/8" = 1'-0"



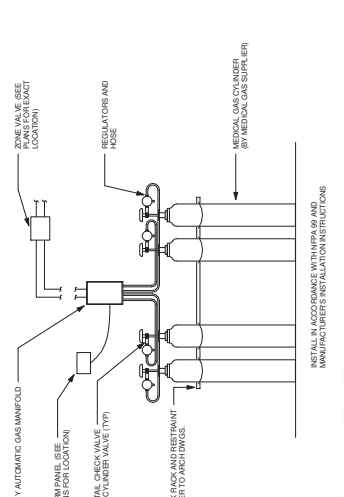
4 JANITORS SINK
1/8" = 1'-0"



5 SUMP PUMPS
1/8" = 1'-0"

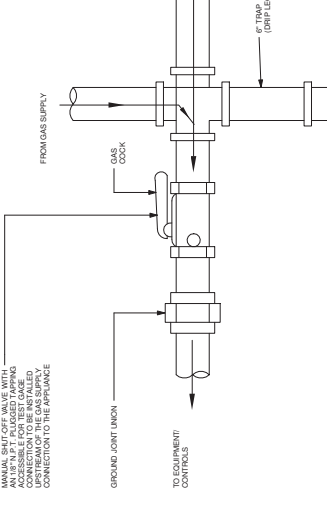


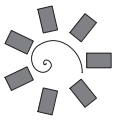
6 FLOOR CLEAN OUT
1/8" = 1'-0"



7 MEDICAL GAS MANIFOLD DETAIL
1/2" = 1'-0"

4 GAS CONNECTION TO EQUIPMENT
SCALE: N.T.S.





**James R. Childers
Architect, Inc.**
1010 S. W. 10th St.
Tulsa, Oklahoma 74106
www.jrchilders.com

PROFESSIONAL SEAL

CONTRACTOR SEAL



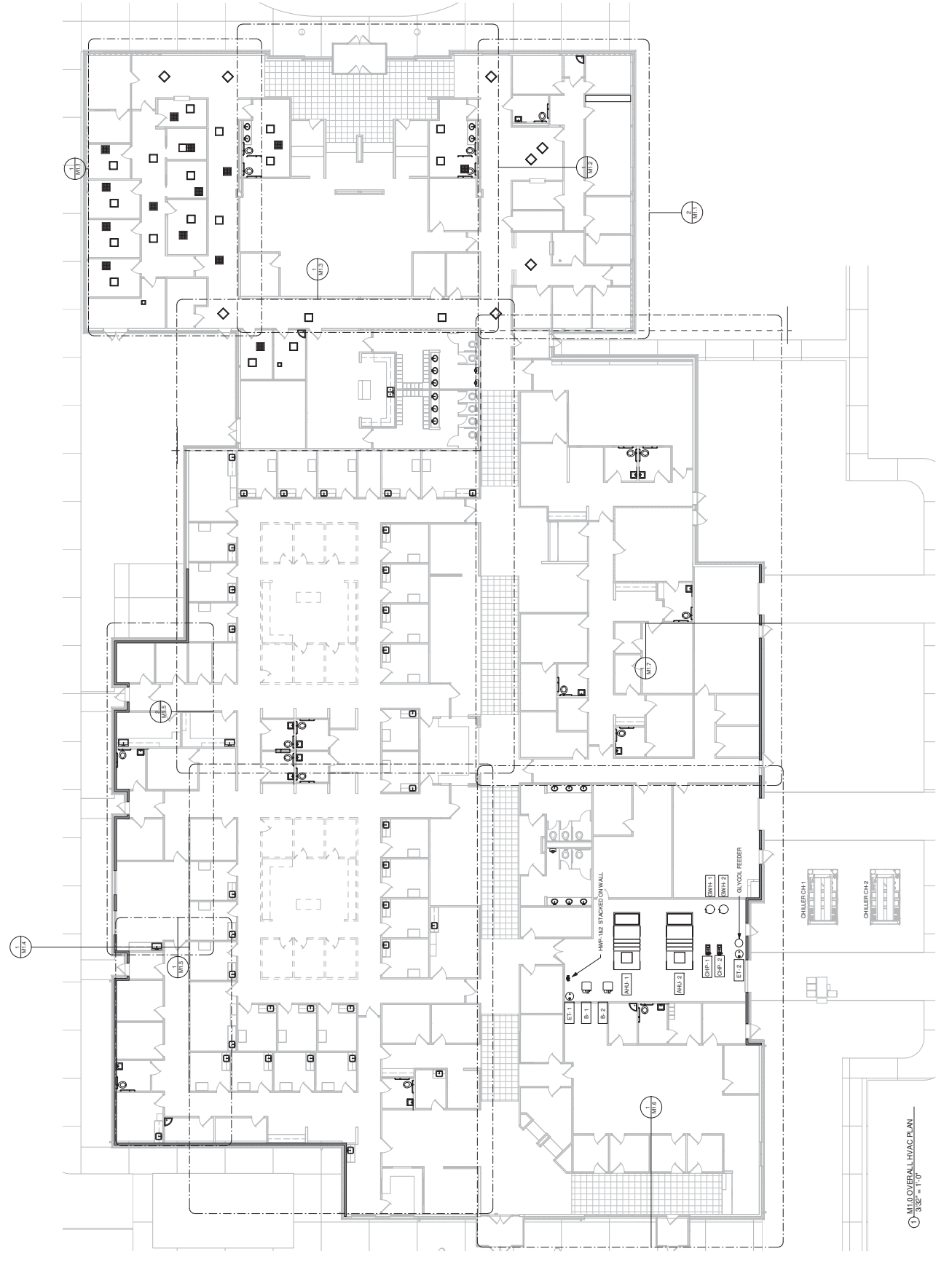
CHEROKEE NATION REDBIRD SMITH & ADDITION
SALLISAW, OKLAHOMA

PROJECT NO. DESIGN DEVELOPMENT SUBMITTAL

NO.	DATE	DESCRIPTION

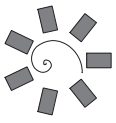
DATE: 02/28/13
SCALE: 1/2" = 1'-0"
PROJECT NO. M1.0

OVERALL HVAC PLAN



M1.0 OVERALL HVAC PLAN
SCALE = 1/8"





**James R. Childers
Architect, Inc.**
101 S. GARDNER, SUITE 200
TULSA, OKLAHOMA 74106
www.jrchilders.com

PROFESSIONAL SEAL

CONTRACTOR SEAL



CHEOKEE NATION ANNEX REMODEL & ADDITION
SALLISAW, OKLAHOMA

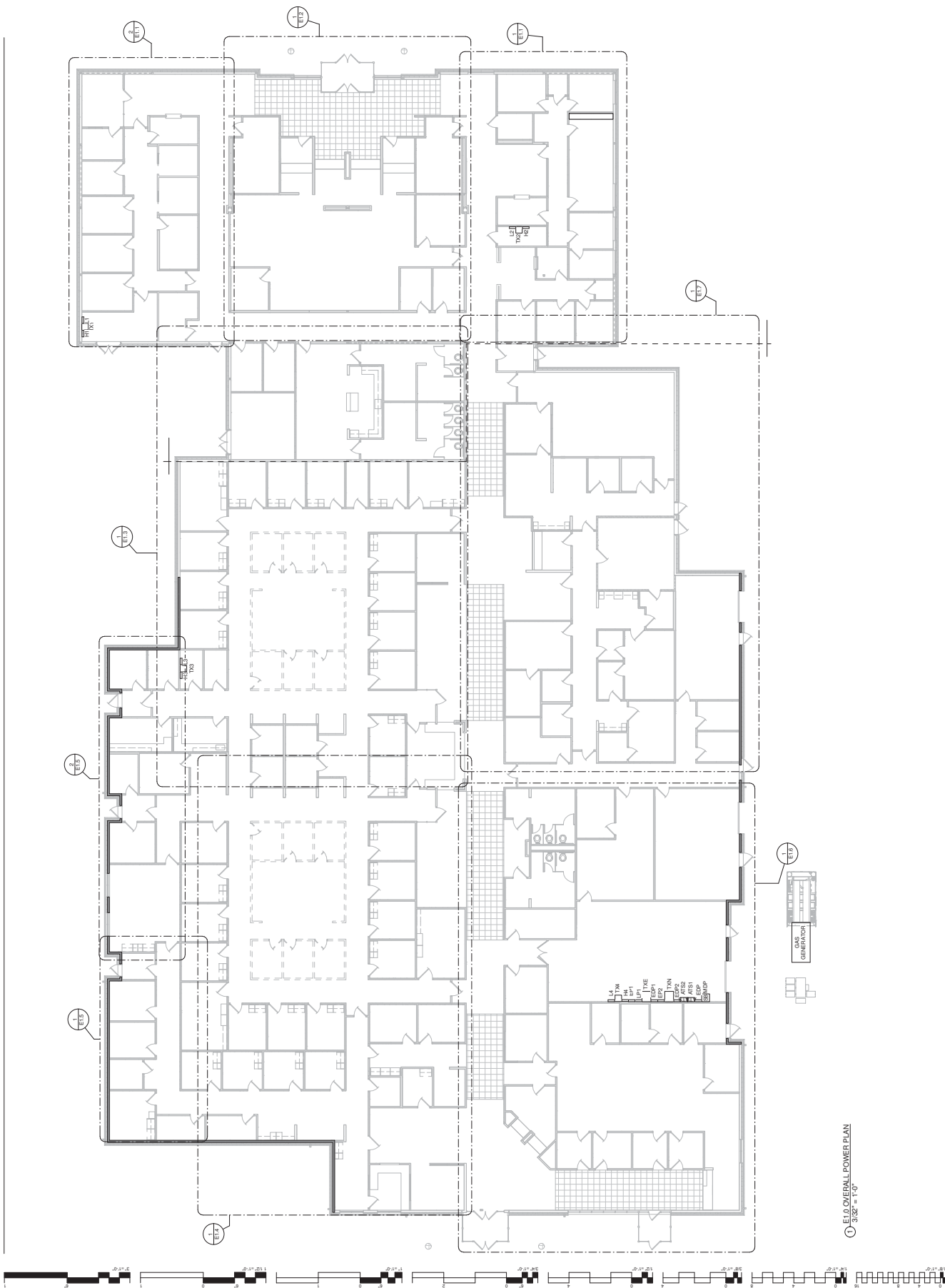
PROJECT NAME
DESIGN DEVELOPMENT
SUBMITTAL

NO.	DATE	DESCRIPTION

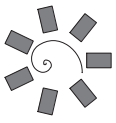
DATE: 02/28/13
DRAWING NO.: 12-14
PROJECT NUMBER:

E1.0

OVERALL POWER PLAN



① E1.0 OVERALL POWER PLAN
3/32" = 1'-0"



James R. Childers
Architect, Inc.
1711 S.W. 10th Street
Tulsa, Oklahoma 74106
www.jrchilders.com

PROFESSIONAL SEAL

CONTRACTOR SEAL



SALLISAW, OKLAHOMA
ADDITION
HEALTH CENTER ANNEX REMODEL &
CHEROKEE NATION REDBRID SMITH

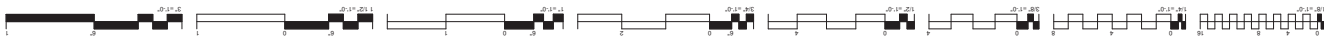
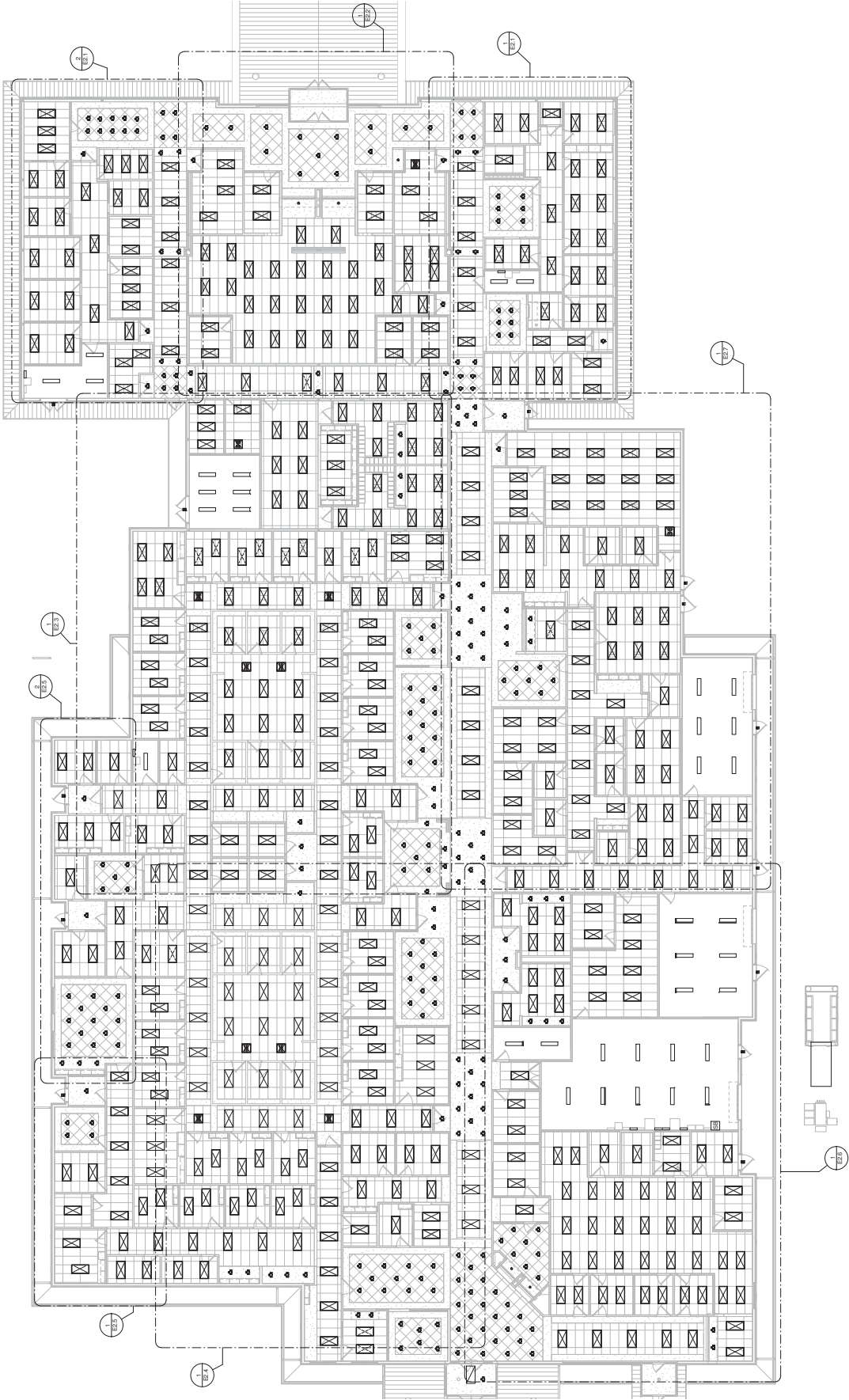
PROPOSED
DESIGN
DOCUMENT
SUBMITTAL

NO.	DATE	DESCRIPTION

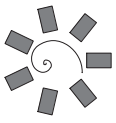
DATE: 02/28/13
SCALE: 1/8" = 1'-0"
PROJECT NO: E2.0

E2.0

OVERALL LIGHTING
PLAN



① E2.0 OVERALL LIGHTING PLAN
3/8" = 1'-0"



James R. Childers
Architect, Inc.
1000 North 10th Street
Tulsa, Oklahoma 74103
www.jrchilders.com

PROFESSIONAL SEAL

CONTRACTOR SEAL



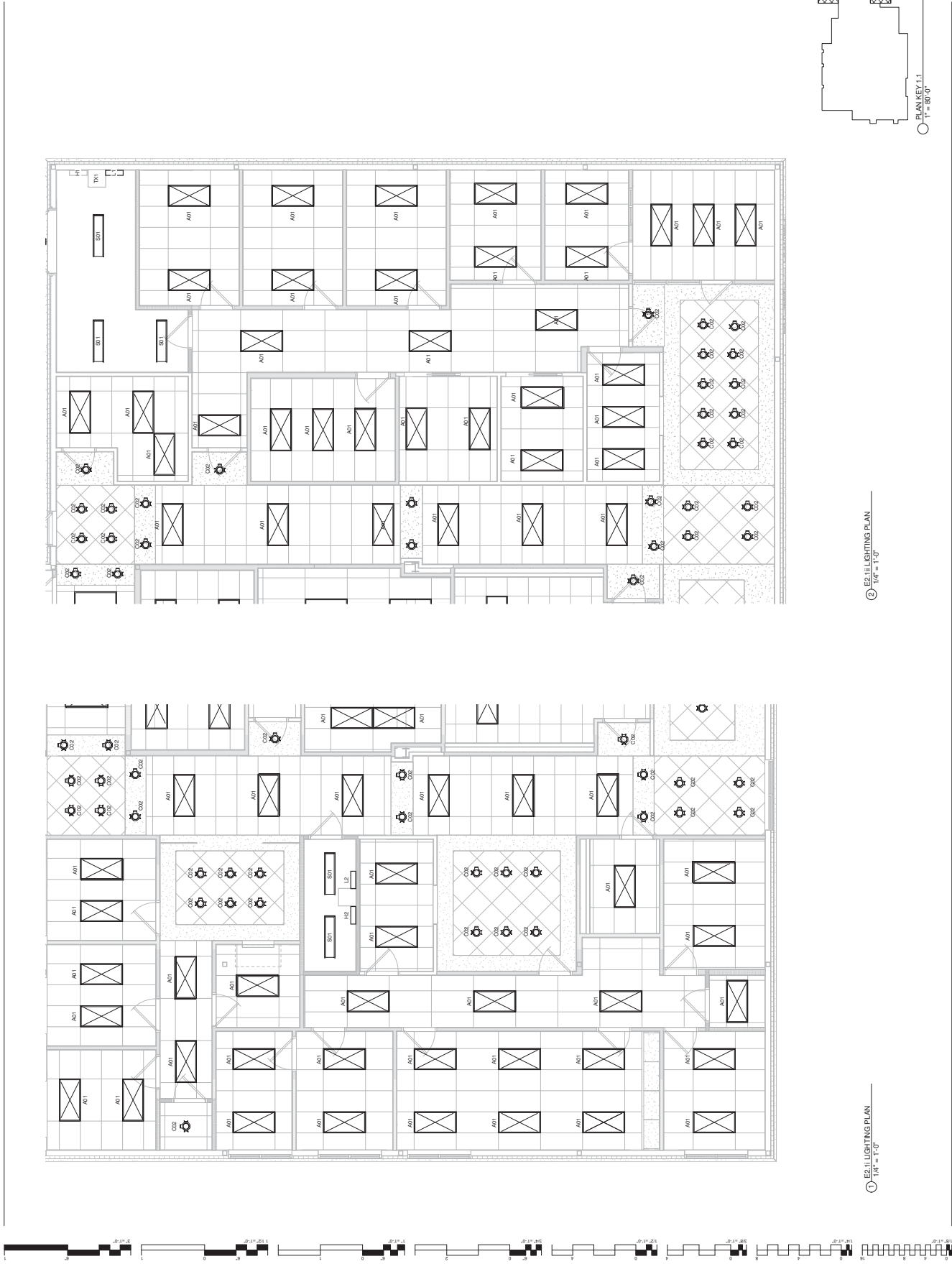
CHEROKEE NATION ANNEX REMODEL & ADDITION
SALLISAW, OKLAHOMA

PROJECT NO. DESIGN DEVELOPMENT SUBMITTAL

NO.	DATE	DESCRIPTION

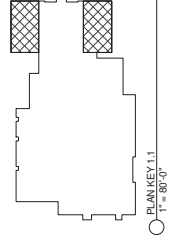
DATE: 02-28-13
DRAWING NO.: 12-14
PROJECT NO.: 12-14

E2.1
ENLARGED LIGHTING PLAN



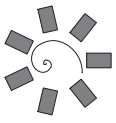
② E2.1 LIGHTING PLAN
1/4" = 1'-0"

① E2.1 LIGHTING PLAN
1/4" = 1'-0"



PLAN KEY 1.1
1" = 30'-0"





James R. Childers
Architect, Inc.
1000 S. W. 10th St., Suite 200
Tulsa, Oklahoma 74106
www.jrchilders.com

PROFESSIONAL SEAL

CONTRACTOR SEAL



PROFESSIONAL SEAL

CHEOKEE NATION ANNEX REMODEL & ADDITION

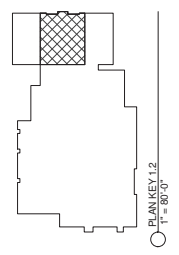
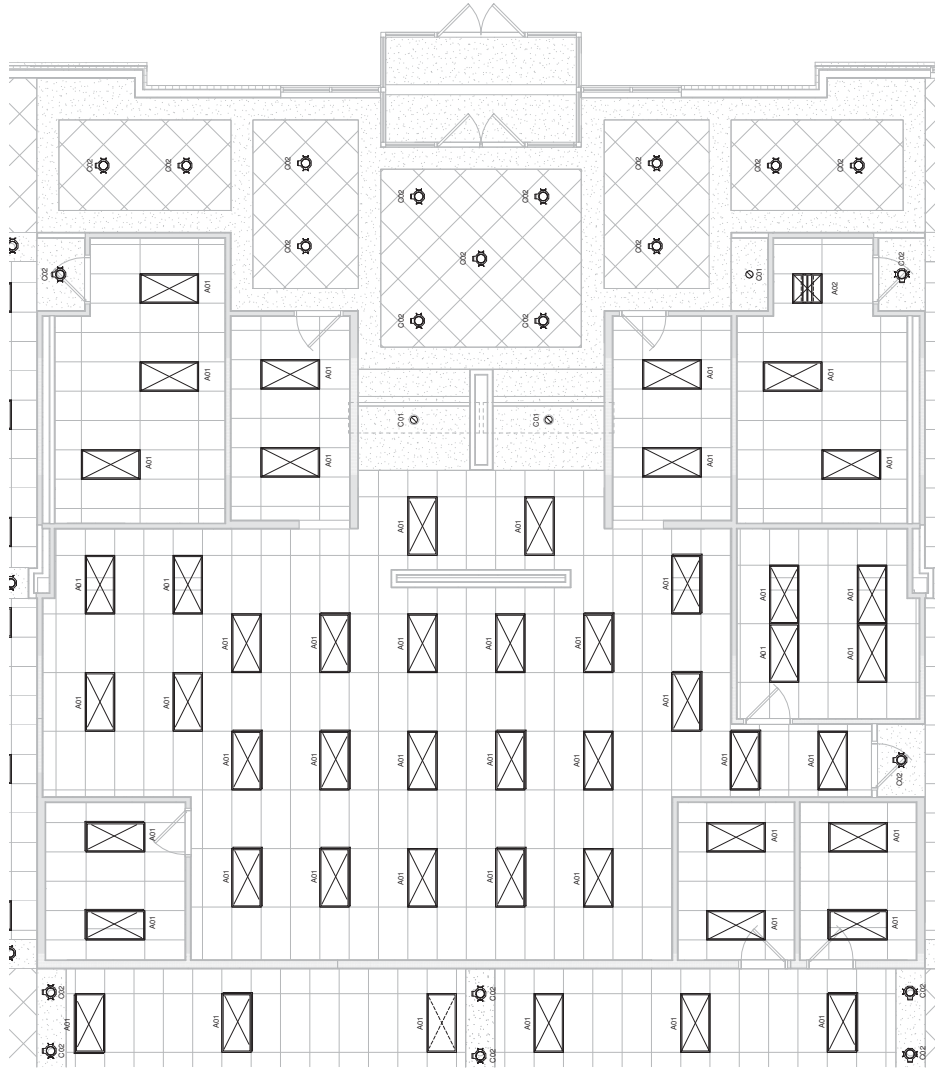
SALLISAW, OKLAHOMA

PROJECT NAME
DESIGN
DOCUMENT
SUBMITTAL

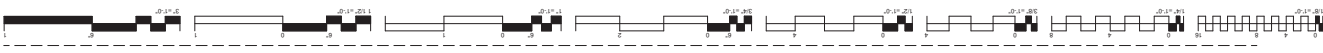
NO.	DATE	DESCRIPTION

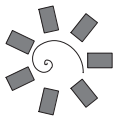
DATE: 03/28/13
DRAWING NO.: 1.2-14
PROJECT NO.: 13-0000

E2.2
ENLARGED LIGHTING PLAN



Ⓢ E2.2 LIGHTING PLAN
1/4" = 1'-0"





**James R. Childers
Architect, Inc.**
1010 S. W. 10th Street
Tulsa, Oklahoma 74106
www.jrchildersarchitect.com

PROFESSIONAL SEAL

CONTRACTOR SEAL



CHEROKEE NATION REDBIRD SMITH &
ADDITION
SALLISAW, OKLAHOMA

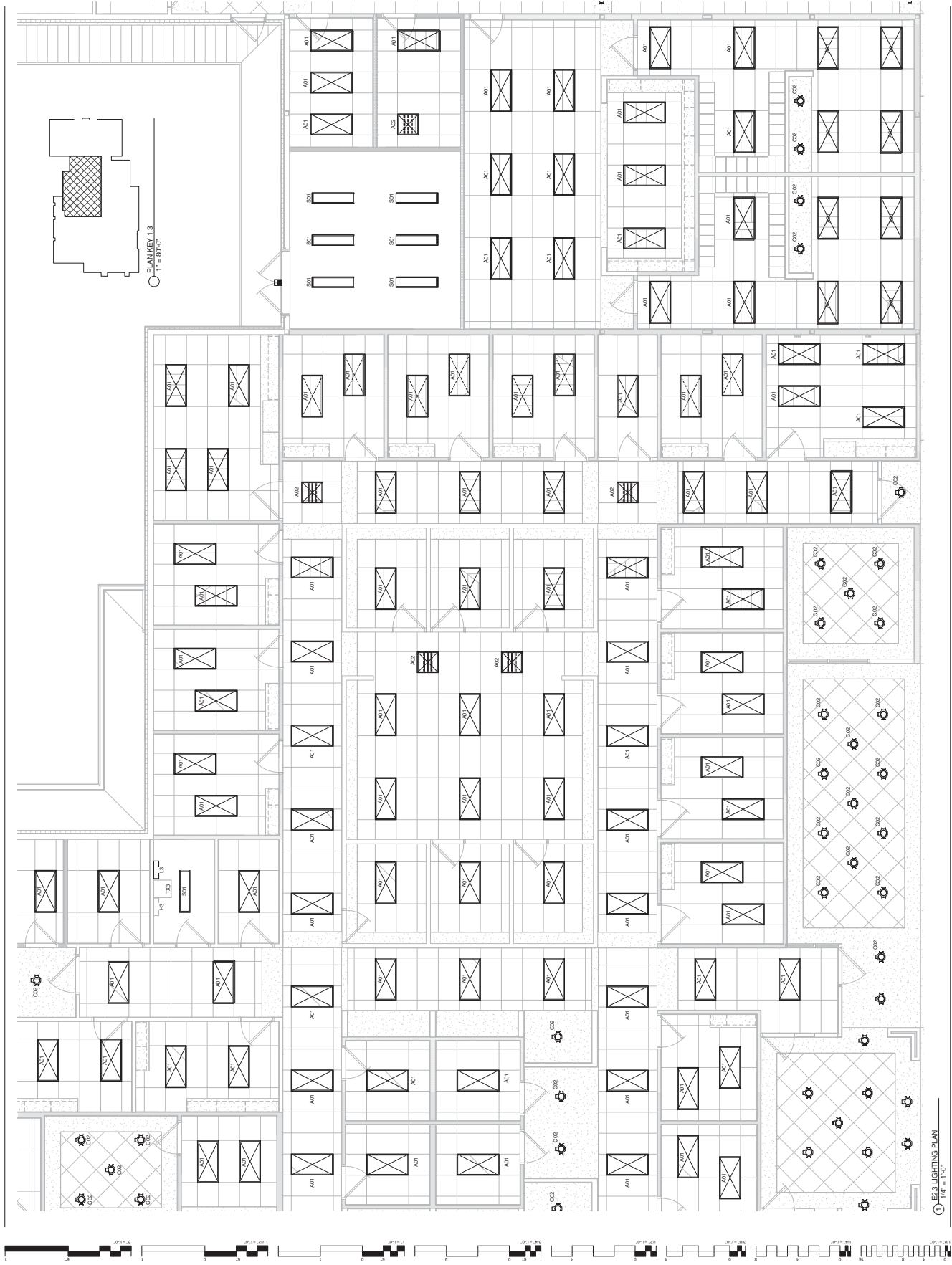
PROJECT NO. DESIGN DOCUMENT SUBMITTAL

DATE	DESCRIPTION
03-28-13	ISSUED FOR PERMIT
03-28-13	ISSUED FOR PERMIT

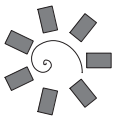
DATE: 03-28-13
SCALE: 1/8" = 1'-0"

E2.3

ENLARGED LIGHTING PLAN



E2.3 LIGHTING PLAN
1/8" = 1'-0"



James R. Childers
Architect, Inc.
1711 S.W. 10th St., Suite 200
Fort Lauderdale, FL 33311
www.jrchilders.com

PROFESSIONAL SEAL

CONTRACTOR SEAL



CHEROKEE NATION REDRID SMITH & ADDITION
SALLISAW, OKLAHOMA

PROFESSIONAL SEAL
DESIGN DEVELOPMENT
SUBMITTAL

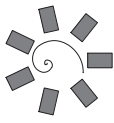
DATE	DESCRIPTION

DATE: 03-28-13
DRAWING NO.: 12-14
PROJECT NO.:

E2.4

ENLARGED
LIGHTING PLAN





James R. Childers
Architect, Inc.
1000 S. W. 12th St., Suite 200
Fort Lauderdale, FL 33315
www.jrchilders.com

PROFESSIONAL SEAL

CONTRACTOR SEAL



CHEROKEE NATION REDBIRD SMITH &
HEALTH CENTER ANNEX REMODEL &
ADDITION
SALLISAW, OKLAHOMA

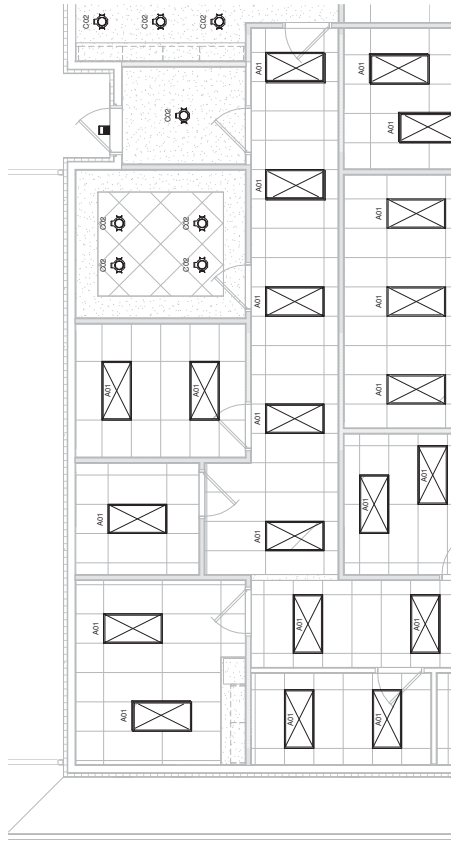
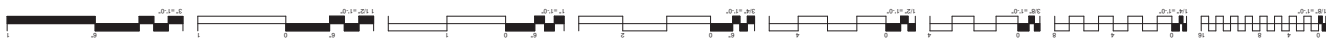
PROPOSED
DESIGN
DEVELOPMENT
SUBMITTAL

NO.	DATE	DESCRIPTION
1		
2		
3		
4		
5		
6		
7		
8		
9		
10		

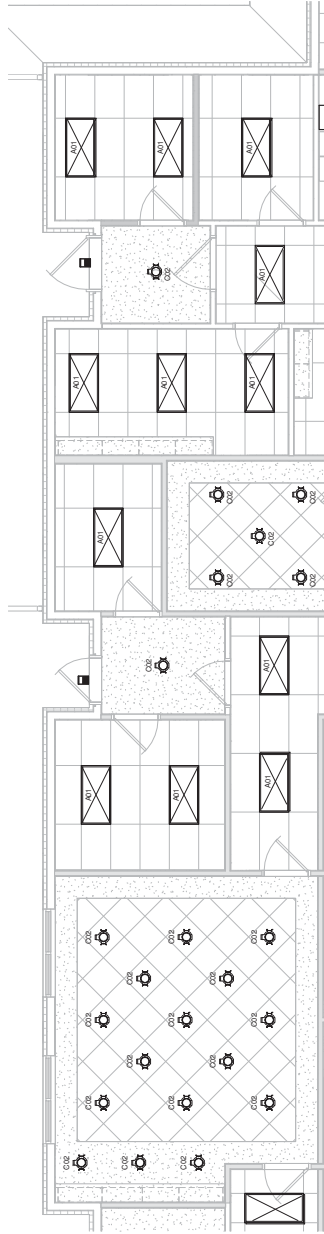
DATE: 02/28/13
DRAWING NO.: 1.2-14
PROJECT NUMBER:

E2.5

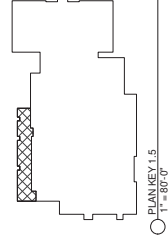
ENLARGED
LIGHTING PLAN

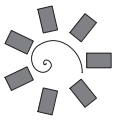


① E2.5 LIGHTING PLAN
1/4" = 1'-0"



② E2.5 LIGHTING PLAN
1/4" = 1'-0"





James R. Childers
Architect, Inc.
1711 S. W. 27th St.
Tulsa, Oklahoma 74119
www.jrchilders.com

PROFESSIONAL SEAL

CONTRACTOR SEAL



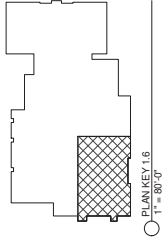
CHEROKEE NATION REDBIRD SMITH & ADDITION
SALLISAW, OKLAHOMA

PROJECT NO. DESIGN DEVELOPMENT SUBMITTAL

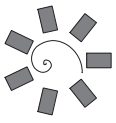
NO.	DATE	DESCRIPTION

DATE: 02-28-13
DRAWING NO.: 1.2-14
PROJECT NO.:

E2.6
ENLARGED LIGHTING PLAN



E2.6 LIGHTING PLAN
1/4" = 1'-0"



James R. Childers
Architect, Inc.
1711 S. W. 10th Ave., Suite 200
Tulsa, Oklahoma 74106
www.jrchilders.com

PROFESSIONAL SEAL

CONTRACTOR SEAL



CHEROKEE NATION REDBIRD SMITH & ADDITION
SALLISAW, OKLAHOMA

PROPOSAL: DESIGN DEVELOPMENT SUBMITTAL

NO.	DATE	DESCRIPTION
1		
2		
3		
4		
5		
6		
7		

DATE: 02/28/13
SCALE: 1/2" = 1'-0"

E2.7

ENLARGED LIGHTING PLAN



① E2.7 LIGHTING PLAN
1/4" = 1'-0"

