

WORK NOTES

(THIS SHEET ONLY)

- 1

48x42 RETURN AIR DUCT UP.
- 2

36x36 SUPPLY AIR DUCT UP.
- 3

28x28 SUPPLY AIR DUCT DOWN.
- 4

40x40 RETURN AIR DUCT UP.
- 5

40x40 RETURN AIR DUCT DOWN.
- 6

18x18 EXHAUST AIR DUCT UP TO EF-10 ON ROOF. 18x18 EXHAUST AIR DUCT DOWN.
- 7

20x20 EXHAUST AIR DUCT UP TO EF-9 OF ROOF. 20x18 EXHAUST AIR DUCT DOWN.
- 8

40x26 SUPPLY DUCT UP TRANSITION AND CONNECT TO AHU. INSTALL WITH FLEX CONNECTION.
- 9

CO₂ SENSOR BELOW CEILING.
- 10

EXPANSION JOINT.
- 11

16x16 EXHAUST AIR DUCT UP TO EF-12 ON ROOF.
- 12

2" HWS/R (28.5) DOWN TO FLOOR BELOW. SEE TM101 FOR CONTINUATION.
- 13

2" CHS/R DOWN ALONG WALL TO FLOOR BELOW. REFER TO SHEET TM101 FOR CONTINUATION.
- 14

PROVIDE 1/2" x 1/2" WIRE MESH SCREEN AT OPENING.
- 15

ROUTE 3/4" CONDENSATE DRAIN DOWN IN WALL TO TAILPIECE OF LAVATORY.
- 16

48"x48"x72" SOUND ATTENUATOR "IAC" MODEL LFM OR EQUAL SUPPORT FROM STRUCTURE. INSTALL WITH VIBRATION ISOLATORS.
- 17

DUCT LAGGING "TES-2000 QA-9" OR EQUAL FROM FAN OPENING TO SOUND ATTENUATOR.
- 18

INSTALL 1" DUCT LINER ON ALL SA DUCT SERVING THE AUDITORIUM. (TYP.)
- 19

INSTALL BOTTOM OF GRILLE @ ELEVATION 124'.
- 20

INSTALL BOTTOM OF GRILLE @ ELEVATION 121'.
- 21

2-1/2" HWS/R (60), 4" CHS/R (190), 1" D UP THRU ROOF TO SERVE AHU-19.
- 22

REFER TO DRAWING M115 FOR CONTINUATION.
- 23

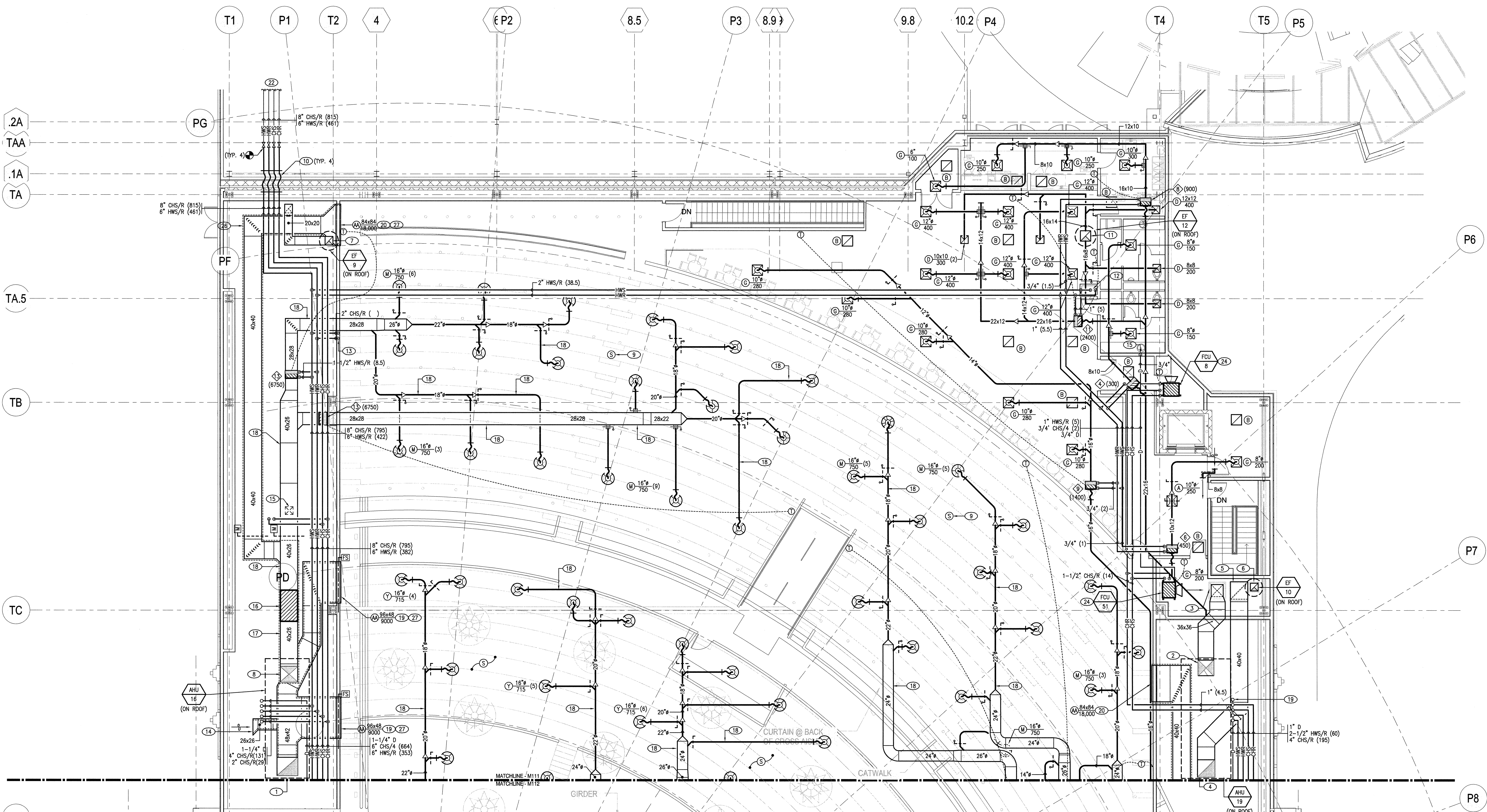
SUPPORT FROM STRUCTURE ABOVE. INSTALL WITH VIBRATION ISOLATORS. REFER TO 5/MOODS FOR PIPING DIAGRAM.
- 24

SUPPORT FROM STRUCTURE ABOVE. INSTALL WITH VIBRATION ISOLATORS. REFER TO 5/MOODS FOR PIPING. INSTALL WITH 1/2x1/2 SCREEN AT INLET AND OUTLET OF FAN.
- 25

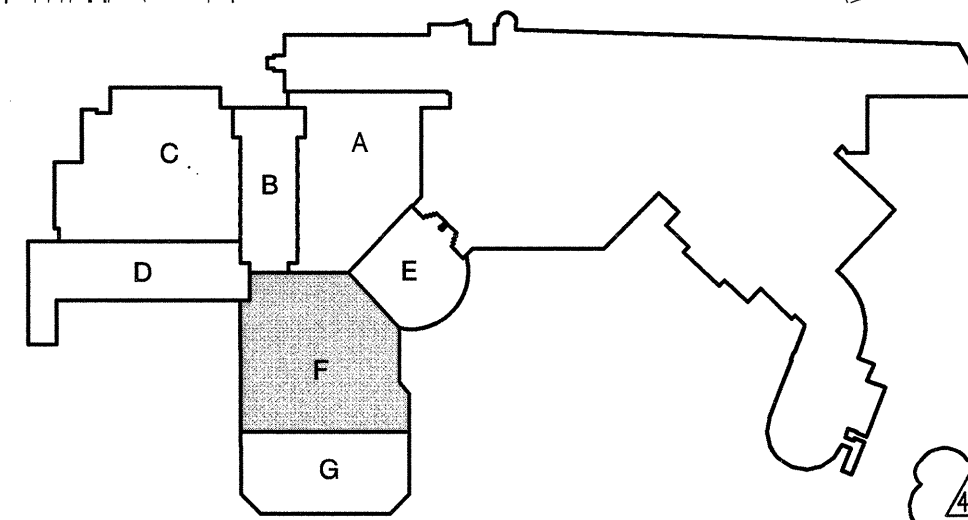
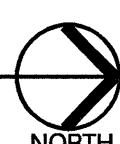
18x18 SUPPLY AIR DUCT DOWN. REFER TO TM101 FOR CONTINUATION.
- 26

INSTALL WITH FIRE WRAP ENCLOSURE.
- 27

PAIN INSIDE DUCT WORK FLAT BLACK.

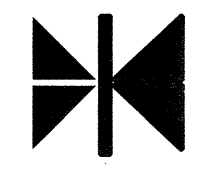


A THEATER LEVEL 2 AREA F - MECHANICAL
SCALE: 1/8" = 1'-0"



2007
**CHEROKEE CASINO
THEATER**
Catoosa, Oklahoma

ARCHITECT:



Thalden • Boyd Architects
A Native American Firm
16 East 16th Street, Suite 500
Tulsa, Oklahoma 74119
(918) 587-7445
St. Louis, MO Las Vegas, NV

THALDEN BOYD ARCHITECTS, LLC
COPYRIGHT 2007

THESE DESIGNS AND DRAWINGS ARE COPYRIGHTED
AND REMAIN THE PROPERTY OF THALDEN BOYD
ARCHITECTS, LLC. THEY MAY NOT BE REPRODUCED
OR TRANSMITTED IN ANY FORM OR BY ANY MEANS
WITHOUT WRITTEN CONSENT.

CONSULTANTS:

- CIVIL ENGINEERING:

FK & ASSOCIATES
4124 E 62 PLACE
TULSA, OKLAHOMA 74136
PHONE: (918) 524-5076
FAX: (918) 524-5076
- MECHANICAL, ELECTRICAL, & PLUMBING ENGINEERING:

FINNEGAN ERICKSON ASSOCIATES
2821 W. HORIZON RIDGE PKWY., STE 200
HENDERSON, NV 89052
PHONE: (702) 269-6060
FAX: (702) 269-6061
www.featlasvegas.com
- STRUCTURAL ENGINEERING:

CHAVEZ-GRIEVES
CONSULTING ENGINEERS, INC.
8538 JEFFERSON, NE
ALBUQUERQUE, NEW MEXICO 87109
PHONE: (505) 344-4090
FAX: (505) 343-8759
- FOODSERVICE CONSULTANT:

BLASDEL & ASSOCIATES
6202 SOUTH LEWIS AVE
TULSA, OKLAHOMA 74136
PHONE: (918) 749-1653
FAX: (918) 749-8504

SEAL:



FINNEGAN ERICKSON ASSOCIATES
CONSULTING ENGINEERS
2821 W. HORIZON RIDGE PKWY., STE 200
HENDERSON, NEVADA 89052
P (702) 269-6060 F (702) 269-6061
WWW.FEALASVEGAS.COM

REVISIONS:

1	FEA	12.16.08	THEATER CONSTRUCTION DOCS
2			
3			
4			
5			
6			
7			
8			
9			
10			
11			
12			
13			
14			
15			
16			
17			
18			
19			
20			
21			
22			
23			
24			
25			
26			
27			
28			
29			
30			
31			
32			
33			
34			
35			
36			
37			
38			
39			
40			
41			
42			
43			
44			
45			
46			
47			
48			
49			
50			
51			
52			
53			
54			
55			
56			
57			
58			
59			
60			
61			
62			
63			
64			
65			
66			
67			
68			
69			
70			
71			
72			
73			
74			
75			
76			
77			
78			
79			
80			
81			
82			
83			
84			
85			
86			
87			
88			
89			
90			
91			
92			
93			
94			
95			
96			
97			
98			
99			
100			

TITLE:

**THEATER
LEVEL TWO, AREA F
- MECHANICAL**

PROJECT NO.: 05412

SCALE: AS SHOWN

CONSTRUCTION
DOCUMENTS
DRAWING NO.

TM111

