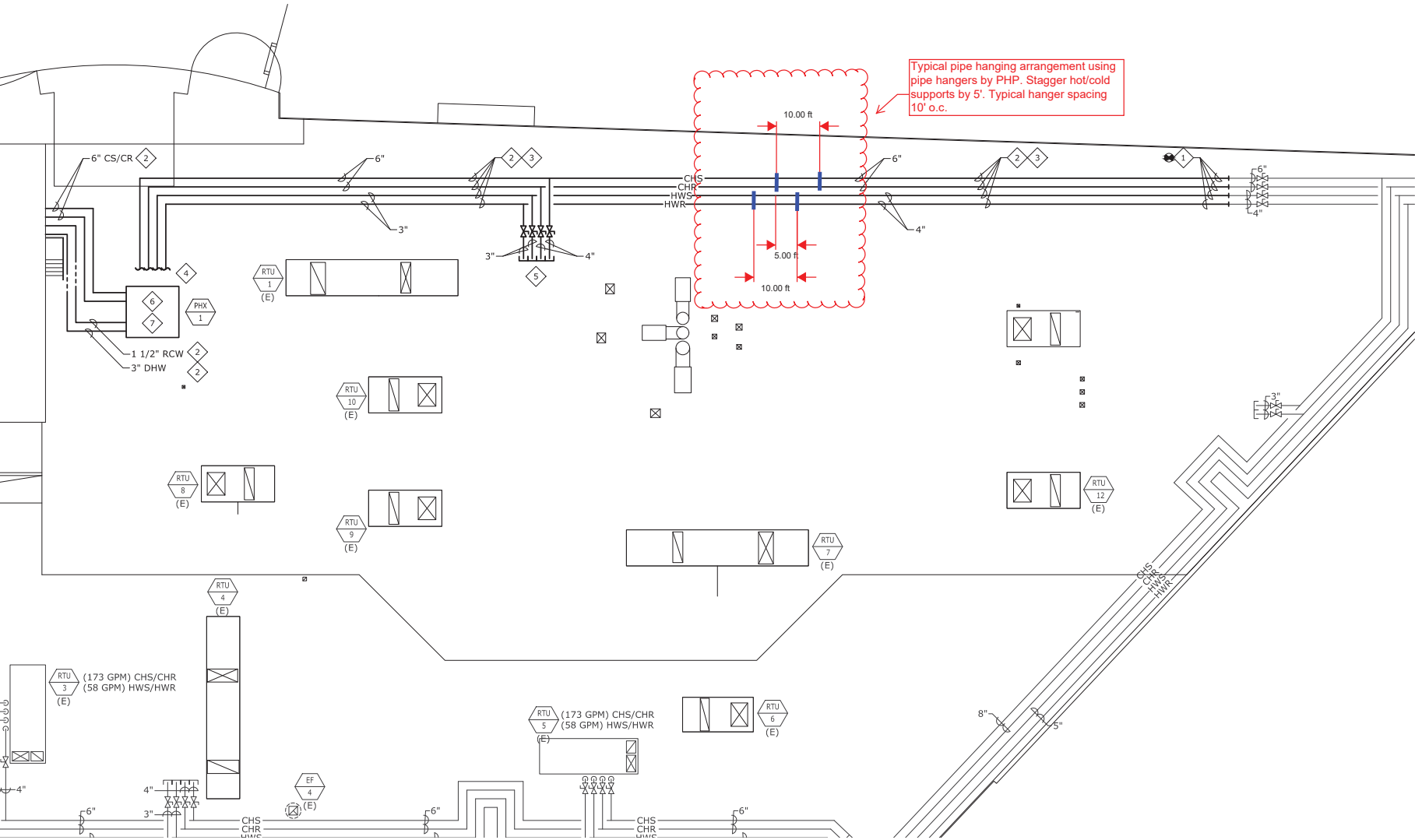


HYDRONIC PIPING WITH OTHER TRADES PRIOR TO COMMENCING WORK.

✓ ISOLATION VALVES, AND BACK FLOW PREVENTION STATION. RE-INSULATE AS REQUIRED.

- REFER TO THE MECHANICAL DETAILS THAT APPLY TO THE WORK ON THIS DRAWING. THESE DETAILS PROVIDE GUIDANCE AS TO INSTALLATION INTENT AND DO NOT NECESSARILY SHOW ALL COMPONENTS REQUIRED.



ARD ROCK CASINO 4 - EXPANSION
CENTRAL PLANT ADDITION
777 WEST CHEROKEE STREET
CATOOSA, OK 74015