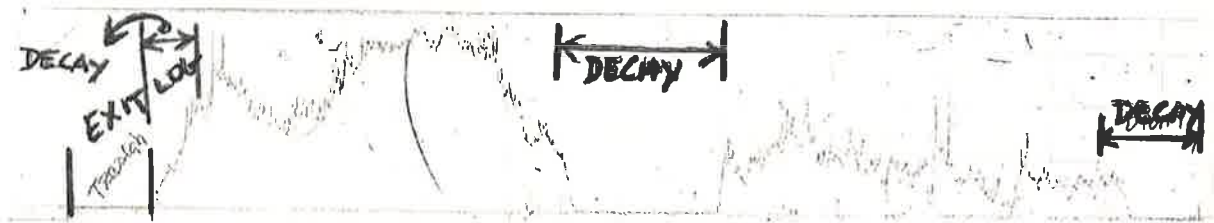




Photo 3 – LOG 7 – Blue arrow indicates direction of resistograph drilling.



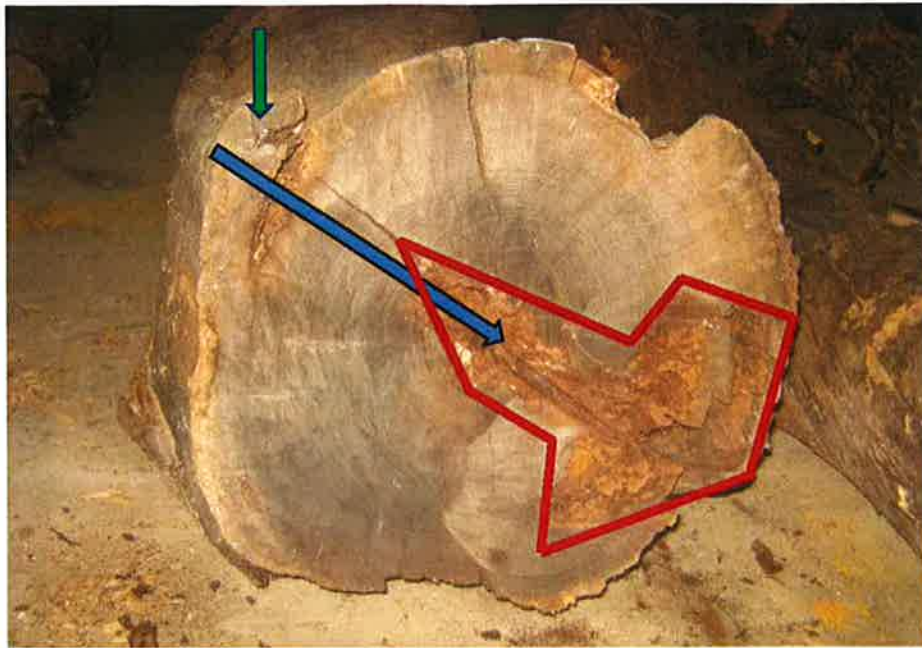
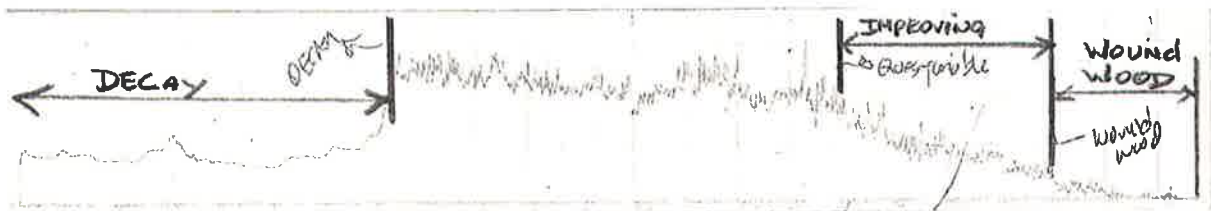


Photo 4 – Blue arrow indicates direction of drilling, green arrow illustrates wound wood, red outline indicates decay zone.



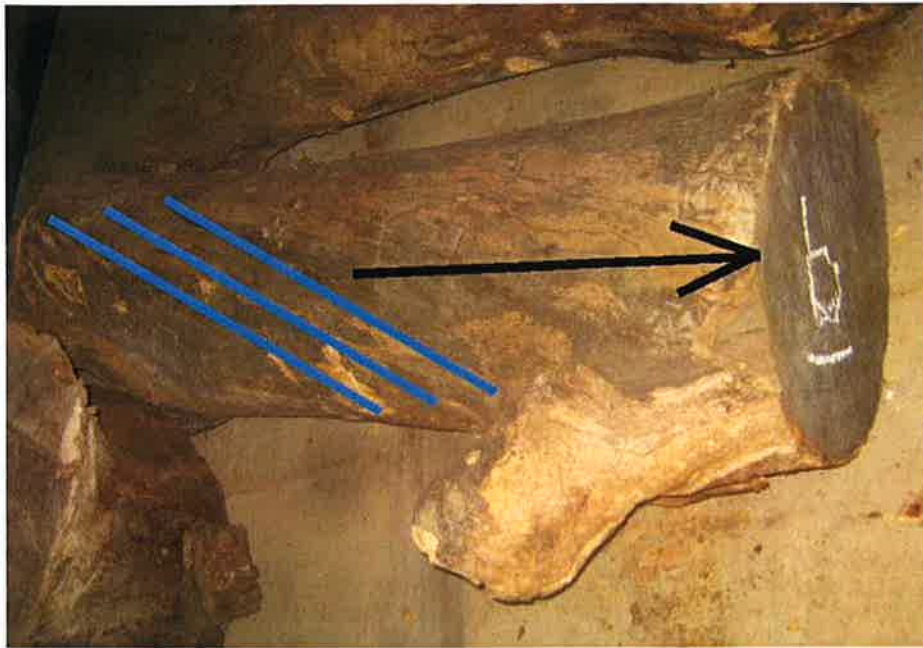


Photo 5 – Spiral grain direction (blue lines) and axis of the tree (black arrow).

APPENDIX II: Log Dimensions & Descriptions

LOG 1



Diameter 1: 20" Diameter 2: 24" Length: 68"
Comments: Outer 2" decayed, sound core, significant spiral grain.

LOG 2



Diameter 1: 9" Diameter 2: 18" Length: 85"
Comments: Outer 2" decayed, sound core.

LOG 3



Diameter 1: 23" Diameter 2: 26" Length: 50"
Comments: Outer 1-1/2" decayed, end with large branch could produce interesting grain patterns.

LOG 4



Diameter 1: 36" Diameter 2: 36" Length: 33"
Comments: Outer 2" decayed, core; approximate 10" core decay, sound wood from surface
rot to rotted core.

LOG 5



Diameter 1: 54"

Diameter 2: 42"

Length: 24"

Comments:

Rotted core & other scattered areas in cross section, several sound areas exist between rotted sections, entire piece can be worked to provide a unique product.

LOG 6



Diameter 1: 17" Diameter 2: 19" Length: 50"
Comments: Outer 3" to 3-1/2" contains decay, significant spiral grain.

LOG 7



Diameter 1: 9" Diameter 2: 10" Length: 150"
Comments: Outer 1/2" to 1" is decayed, 3-1/2" sound wood beneath outer decayed surface,
1-1/2" decayed core, very irregular shape.

LOG 8



Diameter 1: 17" Diameter 2: 13" Length: 86"
Comments: Outer 2-1/2" to 3-1/2" contains a combination of wound wood and decay on one side, sound core.

LOG 9



Diameter 1: 24" Diameter 2: 22" Length: 54"
Comments: Wound wood outer 1-1/2" on one side, 2" decay internal to the wound wood, 4-1/2" internal sound wood, large decay pocket opposite side. (See also Photo 4, Appendix I).

LOG 10



Diameter 1: 12" Diameter 2: 10" Length: 108"
Comments: Outer 2" to 2-1/2" contains decay, sound core.

LOG 11



Diameter 1: 10"

Diameter 2: 14"

Length: 150"

Comments:

Outer ½" to 2" outer decay irregular shape and numerous branch stubs, significant spiral grain.

LOG 12



Diameter 1: 9" Diameter 2: 7" Length: 90"
Comments: ½" to 1-1/2" decay, 1" internal decay pocket approximately 24" from numbered end, moderate spiral grain.

LOG 13



Diameter 1: 18" Diameter 2: 16" Length: 55"
Comments: 1-1/2" to 2" outer decay, sound internal core.

LOG 14



Diameter 1: 7"

Diameter 2: 9"

Length: 75"

Comments:

Outer 1-1/2" decay, sound internal core, wild spiral grain and irregular shape with significant decay pocket at end opposite to number.