

NOTE: THIS IS A MASTER SCHEDULE. NOT ALL SYMBOLS CONTAINED HEREIN MAY APPEAR ON THE DRAWINGS

[illegible]

NOTE: THIS IS A MASTER SCHEDULE. NOT ALL ABBREVIATIONS CONTAINED HEREIN MAY APPEAR ON THE DRAWINGS

[illegible][illegible]

James R. Childers
Architect, Inc.

214 Lexington Avenue
Fort Smith, AR 72501
479-783-2660
www.jrchillers.com



CHEROKEE NATION
ENERGY PARTNER

 Cherokee
Gasoline - Ford Emblem

CHEROKEE NATION ENTERTAINMENT
FORT GIBSON CASINO

FORT GIBSON, OKLAHOMA

FORT GIBSON, OKLAHOMA

AS-BUILT
DRAWINGS

DATE	02/26/13	JOB NUMBER	08-07
PROJECT NUMBER			
MO.01			

[illegible][illegible]

MARK	UNAN/CLIMEN	MODEL	SERVICE	TYPE	CONNU JONGJ	REPRESENT TYPE	REPRESENT CHARGE	LBS.	GAL	EWT(7)	LBS PRO(7)	NUMBER OF PASSES	FILL LOAD KMTON	YIELD	YIELD/2	MOA	MOCP	OBSERVED FOOT/TON	MIL UNIT FOOT/TON	REMARKS	
MODIA	C580	SCREEN	300	R-04	50.0	500	42	58	43	2	1	63	400500	670	800	23.90	470.00/TON	1.2,4,5			
1.	PRODUCER: HOSCHKEBERG P.O.	2.	UNIT SHALL OPERATE WITH AIRSIDE ON: 2007	3.	UNIT SHALL OPERATE WITH AIRSIDE OFF: 2007	4.	UNIT SHALL OPERATE WITH AIRSIDE SYSTEM FOR FLEET PROTECTION ON: 4075	5.	UNIT SHALL OPERATE WITH AIRSIDE SYSTEM FOR FLEET PROTECTION OFF: 4075	6.	UNIT SHALL OPERATE WITH AIRSIDE SYSTEM FOR FLEET PROTECTION ON: 4075	7.	UNIT SHALL OPERATE WITH AIRSIDE SYSTEM FOR FLEET PROTECTION OFF: 4075	8.	UNIT SHALL OPERATE WITH AIRSIDE SYSTEM FOR FLEET PROTECTION ON: 4075	9.	UNIT SHALL OPERATE WITH AIRSIDE SYSTEM FOR FLEET PROTECTION OFF: 4075	10.	UNIT SHALL OPERATE WITH AIRSIDE SYSTEM FOR FLEET PROTECTION ON: 4075	11.	UNIT SHALL OPERATE WITH AIRSIDE SYSTEM FOR FLEET PROTECTION OFF: 4075

H IDRONIC PUMP SCHEDULE													
GENERAL DATA													
MODEL	DATE/ENGINEER	LOCATION	TYPE	SERVICE	QPM	HEAD FT/1	EFF FT/1	INTEGR FT	IMPELLER IN.	BRP	HP	RPM	ORIGINATING ELEVATION ELEV.
1	ASTRONG	CENTRAL PLANT	DUAL MAIN LINE	PRIMARY WATER	509	115	28	17.3	6	20.45	25	3600	4620.000
2	ASTRONG	CENTRAL PLANT	DUAL MAIN LINE	CALLED WATER	509	115	70	17.3	6	20.45	25	3600	4620.000
3	ASTRONG	CENTRAL PLANT	DUAL MAIN LINE	WATER	509	115	70	17.3	6	20.45	25	3600	4620.000
4	ASTRONG	CENTRAL PLANT	DUAL MAIN LINE	WATER	149	20	81	15.3	1.9	2	2	1750	4620.000
5	ASTRONG	CENTRAL PLANT	DUAL MAIN LINE	WATER	149	20	81	15.3	1.9	2	2	1750	4620.000
6	ASTRONG	CENTRAL PLANT	DUAL MAIN LINE	WATER	149	20	81	15.3	1.9	2	2	1750	4620.000
7	ASTRONG	CENTRAL PLANT	DUAL MAIN LINE	WATER	149	115	67	15.3	14.8	20	70	3500	4620.000
8	ASTRONG	CENTRAL PLANT	DUAL MAIN LINE	WATER	149	115	67	15.3	14.8	20	70	3500	4620.000
9	ASTRONG	CENTRAL PLANT	DUAL MAIN LINE	WATER	149	115	67	15.3	14.8	20	70	3500	4620.000
10	ASTRONG	CENTRAL PLANT	DUAL MAIN LINE	WATER	149	115	67	15.3	14.8	20	70	3500	4620.000
11	ASTRONG	CENTRAL PLANT	DUAL MAIN LINE	WATER	149	115	67	15.3	14.8	20	70	3500	4620.000
12	ASTRONG	CENTRAL PLANT	DUAL MAIN LINE	WATER	149	115	67	15.3	14.8	20	70	3500	4620.000
13	ASTRONG	CENTRAL PLANT	DUAL MAIN LINE	WATER	149	115	67	15.3	14.8	20	70	3500	4620.000
14	ASTRONG	CENTRAL PLANT	DUAL MAIN LINE	WATER	149	115	67	15.3	14.8	20	70	3500	4620.000
15	ASTRONG	CENTRAL PLANT	DUAL MAIN LINE	WATER	149	115	67	15.3	14.8	20	70	3500	4620.000
16	ASTRONG	CENTRAL PLANT	DUAL MAIN LINE	WATER	149	115	67	15.3	14.8	20	70	3500	4620.000
17	ASTRONG	CENTRAL PLANT	DUAL MAIN LINE	WATER	149	115	67	15.3	14.8	20	70	3500	4620.000
18	ASTRONG	CENTRAL PLANT	DUAL MAIN LINE	WATER	149	115	67	15.3	14.8	20	70	3500	4620.000
19	ASTRONG	CENTRAL PLANT	DUAL MAIN LINE	WATER	149	115	67	15.3	14.8	20	70	3500	4620.000
20	ASTRONG	CENTRAL PLANT	DUAL MAIN LINE	WATER	149	115	67	15.3	14.8	20	70	3500	4620.000
21	ASTRONG	CENTRAL PLANT	DUAL MAIN LINE	WATER	149	115	67	15.3	14.8	20	70	3500	4620.000
22	ASTRONG	CENTRAL PLANT	DUAL MAIN LINE	WATER	149	115	67	15.3	14.8	20	70	3500	4620.000
23	ASTRONG	CENTRAL PLANT	DUAL MAIN LINE	WATER	149	115	67	15.3	14.8	20	70	3500	4620.000
24	ASTRONG	CENTRAL PLANT	DUAL MAIN LINE	WATER	149	115	67	15.3	14.8	20	70	3500	4620.000
25	ASTRONG	CENTRAL PLANT	DUAL MAIN LINE	WATER	149	115	67	15.3	14.8	20	70	3500	4620.000
26	ASTRONG	CENTRAL PLANT	DUAL MAIN LINE	WATER	149	115	67	15.3	14.8	20	70	3500	4620.000
27	ASTRONG	CENTRAL PLANT	DUAL MAIN LINE	WATER	149	115	67	15.3	14.8	20	70	3500	4620.000
28	ASTRONG	CENTRAL PLANT	DUAL MAIN LINE	WATER	149	115	67	15.3	14.8	20	70	3500	4620.000
29	ASTRONG	CENTRAL PLANT	DUAL MAIN LINE	WATER	149	115	67	15.3	14.8	20	70	3500	4620.000
30	ASTRONG	CENTRAL PLANT	DUAL MAIN LINE	WATER	149	115	67	15.3	14.8	20	70	3500	4620.000
31	ASTRONG	CENTRAL PLANT	DUAL MAIN LINE	WATER	149	115	67	15.3	14.8	20	70	3500	4620.000
32	ASTRONG	CENTRAL PLANT	DUAL MAIN LINE	WATER	149	115	67	15.3	14.8	20	70	3500	4620.000
33	ASTRONG	CENTRAL PLANT	DUAL MAIN LINE	WATER	149	115	67	15.3	14.8	20	70	3500	4620.00

AIR - DIRT SEPARATOR SCHEDULE									
UNIT	TYPE	SERVICE	CONNECTIONS IN	NO. OF "4" IN	SIZE IN DIA. - HEIGHT	WEIGHT LBS.	REMARKS		
WASH SPROTHERM PACOMO	AIR DIRT	COILED WATERS	500	8"	.08	16	426	-	
SPROTHERM PACOMO	AIR DIRT	NO WATERS	126	4"	.069	16	150	-	

E. PANSION TANK SCHEDULE													
WASK	WASK CODE	T. FE	SERVICE	TANK	ACCEPTANCE		RT. F. N.	RAISE TO TOP	SYSTEM	S. STAIN PRESSURE	WEIGHT	REMARKS	
				VOLUME GALL.	VOLUME GALL.	DA.							HTEN.
VERTICAL	VERTICAL	VERTICAL	CHEMICAL	80	20	24	52	125	42	90	65	900	1
VERTICAL	VERTICAL	VERTICAL	BLOOD	80	20	24	52	125	42	90	65	900	1
VERTICAL	VERTICAL	VERTICAL	BLOOD	80	20	24	52	125	42	90	65	900	1
VERTICAL	VERTICAL	VERTICAL	HOT WATER	80	20	24	52	125	42	90	65	900	1

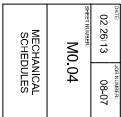


PROJECT PHASE:
**AS-BUILT
DRAWINGS**

WAVE	GENERAL DATA			SPECFAN			MOTOR			E-HSIFAN			MOTOR			COOLING COEFF.			UA WATER P-TH													
	WAVE/FACTORY MODEL	LOCATION	SERVICE	SHIP/AIR CMT.	IN.	T-PE	FAN DIA. IN	DT	PM	BHP	WHP	EXP. AIR (GPM)	IN.	T-PE	DIA. IN	DT	PM	BHP		WHP	TOTAL MBH	REQUIRE MBH	EAT WB	EAT DB	LAT WB	LAT DB	UA/AC FIVE	UA/AC PD	EVLT	ENT	OPM	NR. ROWS
W1	04H1000000	ROOF	CALNO	20.000	2.0	AF	30.0	1	1438	24.2	30.0	10.000		AF	33	1	1338	18.0	25.0	1,122.9	860.0	91.0	69.4	51.2	51.1	464	1.17	42	56	144.0	10	7.0
W2	04H1000000	ROOF	CALNO	20.000	2.0	AF	33.0	1	1438	24.2	30.0	10.000		AF	33	1	1338	18.0	25.0	1,122.9	860.0	91.0	69.4	51.2	51.1	464	1.17	42	56	144.0	10	7.0
W3	04H1000000	ROOF	CALNO	20.000	2.0	AF	33.0	1	1438	24.2	30.0	10.000		AF	33	1	1338	18.0	25.0	1,122.9	860.0	91.0	69.4	51.2	51.1	464	1.17	42	56	144.0	10	7.0
W4	04H1000000	ROOF	WTECHN	1000	3.003	AF	13.50	1	1750	3.83	5.0	1.000	.5	AF	14.5	1	1750	1.0	2.0	186.6	165.3	67.6	66.9	51.2	51.0	500	0.69	42	56	24.3	8	11.50
W5	04H1000000	ROOF	DWNG	1.500	5.003	AF	16.50	1	1750	3.77	5.0	500	.5	AF	16.2	1	1750	1.5	3.0	277.2	163.3	67.6	66.9	51.2	51.0	500	0.82	42	56	34.7	8	15.80
W6	04H1000000	ROOF	BOH	7070	8.500	AF	27.0	1	1750	5.44	7.5	500	1.0	AF	19.6	1	1750	2.8	5.0	447.0	321.0	67.6	66.9	52.0	51.6	422	0.68	42	56	50.0	8	10.2
W7	04H1000000	ROOF	BOH	860	2.903	AF	13.50	1	1750	1.21	2.0	500	.5	AF	13.2	1	1750	0.5	1.0	117.1	80.9	67.6	66.9	51.7	51.5	500	0.69	42	56	15.3	8	5.60

[illegible][illegible][illegible]

ENERGY RECOVER : WHEEL SCHEDULE									
MARK	OUTSIDE AIR CONDITIONING COIL			SPLIT AIR CONDITIONING COIL			FAN TRAILER AIR CONDITIONING COIL		
	CHW DRY WBT	E.A.P.F. DRY WBT	E.A.P.F. WET WBT	CHW DRY WBT	E.A.P.F. DRY WBT	E.A.P.F. WET WBT	CHW DRY WBT	E.A.P.F. DRY WBT	E.A.P.F. WET WBT
20,000	105.76	3	72	20,000	51.3-51.1	91.0	20,000	99.4-73.6	80
20,000	105.76	3	72	20,000	51.3-51.1	91.0	20,000	99.4-73.6	80



Cheerilee
CASINO • FOOTBALL


AS-BUILT DRAWINGS	
NO.	DATE
1	1-1-11
AS-BUILT DRAWINGS	

FAN COIL UNIT SCHEDULE

[illegible]

COMPUTER ROOM AIR CONDITIONING UNIT

[illegible]

COMPUTER ROOM AIR COOLED CONDENSER UNIT SCHEDULE

[illegible]

EXHAUST FAN SCHEDULE

MARK	GENERAL DATA				FIN			ELECTROL			OPERATING WEIGHT (KG)	REMARKS	
	MANUFACTURER MODEL	LOCATION	SERVICE	DATE	CHG	ESP	IN WGT.	IN WGT.	BP	HP			FLA
1	GREENECK	ROOF	TOILET ROOM	CENR.	1550	0.5	1530	0.29	11.1	5.8	1201160	80	1, 2, 3, 4, 6
2	GREENECK	ROOF	TOILET ROOM	CENR.	800	0.5	1538	0.13	1.6	4.4	1201160	90	1, 2, 3, 4, 6
3	GREENECK	ROOF	MEDICINAL ROOM	CENR.	200	0.35	1550	0.03	1.50	0.21	1201160	20	1, 2, 3, 4, 6, 7
4	GREENECK	ROOF	HOUSEKEEPING	CENR.	200	0.25	1550	0.03	1.50	0.21	1201160	20	1, 2, 3, 4, 6
5	GREENECK	ROOF	COUNTING	CENR.	125	0.25	1550	0.02	1.20	0.21	1201160	20	1, 2, 3, 4, 6
6	GREENECK	JANITOR	CENR.	75	0.2	1300	0.01	1.60	0.104	0.104	1201160	25	2, 3, 4, 5, 6
7	GREENECK	CEILING	TOILET ROOM	CENR.	75	0.2	1300	0.01	1.60	0.104	1201160	25	2, 3, 4, 5, 6
8	GREENECK	CEILING	SHADE SHIP	CENR.	75	0.2	1300	0.01	1.60	0.104	1201160	25	2, 3, 4, 5, 6
9	GREENECK	CEILING	BREAK ROOM	CENR.	75	0.2	1300	0.01	1.60	0.104	1201160	25	2, 3, 4, 5, 6
10	GREENECK	CEILING	SHADE SHIP	CENR.	75	0.2	1300	0.01	1.60	0.104	1201160	25	2, 3, 4, 5, 6
11	GREENECK	CEILING	TOILET ROOM	CENR.	75	0.2	1300	0.01	1.60	0.104	1201160	25	2, 3, 4, 5, 6
12	GREENECK	CEILING	SHADE SHIP	CENR.	75	0.2	1300	0.01	1.60	0.104	1201160	25	2, 3, 4, 5, 6
13	GREENECK	CEILING	SHADE SHIP	CENR.	75	0.2	1300	0.01	1.60	0.104	1201160	25	2, 3, 4, 5, 6
14	GREENECK	CEILING	SHADE SHIP	CENR.	75	0.2	1300	0.01	1.60	0.104	1201160	25	2, 3, 4, 5, 6
15	GREENECK	CEILING	SHADE SHIP	CENR.	75	0.2	1300	0.01	1.60	0.104	1201160	25	2, 3, 4, 5, 6
16	GREENECK	CEILING	SHADE SHIP	CENR.	75	0.2	1300	0.01	1.60	0.104	1201160	25	2, 3, 4, 5, 6
17	GREENECK	CEILING	SHADE SHIP	CENR.	75	0.2	1300	0.01	1.60	0.104	1201160	25	2, 3, 4, 5, 6
18	GREENECK	CEILING	SHADE SHIP	CENR.	75	0.2	1300	0.01	1.60	0.104	1201160	25	2, 3, 4, 5, 6
19	GREENECK	CEILING	SHADE SHIP	CENR.	75	0.2	1300	0.01	1.60	0.104	1201160	25	2, 3, 4, 5, 6
20	GREENECK	CEILING	SHADE SHIP	CENR.	75	0.2	1300	0.01	1.60	0.104	1201160	25	2, 3, 4, 5, 6
21	GREENECK	CEILING	SHADE SHIP	CENR.	75	0.2	1300	0.01	1.60	0.104	1201160	25	2, 3, 4, 5, 6
22	GREENECK	CEILING	SHADE SHIP	CENR.	75	0.2	1300	0.01	1.60	0.104	1201160	25	2, 3, 4, 5, 6
23	GREENECK	CEILING	SHADE SHIP	CENR.	75	0.2	1300	0.01	1.60	0.104	1201160	25	2, 3, 4, 5, 6
24	GREENECK	CEILING	SHADE SHIP	CENR.	75	0.2	1300	0.01	1.60	0.104	1201160	25	2, 3, 4, 5, 6
25	GREENECK	CEILING	SHADE SHIP	CENR.	75	0.2	1300	0.01	1.60	0.104	1201160	25	2, 3, 4, 5, 6
26	GREENECK	CEILING	SHADE SHIP	CENR.	75	0.2	1300	0.01	1.60	0.104	1201160	25	2, 3, 4, 5, 6
27	GREENECK	CEILING	SHADE SHIP	CENR.	75	0.2	1300	0.01	1.60	0.104	1201160	25	2, 3, 4, 5, 6
28	GREENECK	CEILING	SHADE SHIP	CENR.	75	0.2	1300	0.01	1.60	0.104	1201160	25	2, 3, 4, 5, 6
29	GREENECK	CEILING	SHADE SHIP	CENR.	75	0.2	1300	0.01	1.60	0.104	1201160	25	2, 3, 4, 5, 6
30	GREENECK	CEILING	SHADE SHIP	CENR.	75	0.2	1300	0.01	1.60	0.104	1201160	25	2, 3, 4, 5, 6
31	GREENECK	CEILING	SHADE SHIP	CENR.	75	0.2	1300	0.01	1.60	0.104	1201160	25	2, 3, 4, 5, 6
32	GREENECK	CEILING	SHADE SHIP	CENR.	75	0.2	1300	0.01	1.60	0.104	1201160	25	2, 3, 4, 5, 6
33	GREENECK	CEILING	SHADE SHIP	CENR.	75	0.2	1300	0.01	1.60	0.104	1201160	25	2, 3, 4, 5, 6
34	GREENECK	CEILING	SHADE SHIP	CENR.	75	0.2	1300	0.01	1.60	0.104	1201160	25	2, 3, 4, 5, 6
35	GREENECK	CEILING	SHADE SHIP	CENR.	75	0.2	1300	0.01	1.60	0.104	1201160	25	2, 3, 4, 5, 6
36	GREENECK	CEILING	SHADE SHIP	CENR.	75	0.2	1300	0.01	1.60	0.104	1201160	25	2, 3, 4, 5, 6
37	GREENECK	CEILING	SHADE SHIP	CENR.	75	0.2	1300	0.01	1.60	0.104	1201160	25	2, 3, 4, 5, 6
38	GREENECK	CEILING	SHADE SHIP	CENR.	75	0.2	1300	0.01	1.60	0.104	1201160	25	2, 3, 4, 5, 6
39	GREENECK	CEILING	SHADE SHIP	CENR.	75	0.2	1300	0.01	1.60	0.104	1201160	25	2, 3, 4, 5, 6
40	GREENECK	CEILING	SHADE SHIP	CENR.	75	0.2	1300	0.01	1.60	0.104	1201160	25	2, 3, 4, 5, 6
41	GREENECK	CEILING	SHADE SHIP	CENR.	75	0.2	1300	0.01	1.60	0.104	1201160	25	2, 3, 4, 5, 6
42	GREENECK	CEILING	SHADE SHIP	CENR.	75	0.2	1300	0.01	1.60	0.104	1201160	25	2, 3, 4, 5, 6
43	GREENECK	CEILING	SHADE SHIP	CENR.	75	0.2	1300	0.01	1.60	0.104	1201160	25	2, 3, 4, 5, 6
44	GREENECK	CEILING	SHADE SHIP	CENR.	75	0.2	1300	0.01	1.60	0.104	1201160	25	2, 3, 4, 5, 6
45	GREENECK	CEILING	SHADE SHIP	CENR.	75	0.2	1300	0.01	1.60	0.104	1201160	25	2, 3, 4, 5, 6
46	GREENECK	CEILING	SHADE SHIP	CENR.	75	0.2	1300	0.01	1.60	0.104	1201160	25	2, 3, 4, 5, 6
47	GREENECK	CEILING	SHADE SHIP	CENR.	75	0.2	1300	0.01	1.60	0.104	1201160	25	2, 3, 4, 5, 6
48	GREENECK	CEILING	SHADE SHIP	CENR.	75	0.2	1300	0.01	1.60	0.104	1201160	25	2, 3, 4, 5, 6
49	GREENECK	CEILING	SHADE SHIP	CENR.	75	0.2	1300	0.01	1.60	0.104	1201160	25	2, 3, 4, 5, 6
50	GREENECK	CEILING	SHADE SHIP	CENR.	75	0.2	1300	0.01	1.60	0.104	1201160	25	2, 3, 4, 5, 6
51	GREENECK	CEILING	SHADE SHIP	CENR.	75	0.2	1300	0.01	1.60	0.104	1201160	25	2, 3, 4, 5, 6
52	GREENECK	CEILING	SHADE SHIP	CENR.	75	0.2	1300	0.01	1.60	0.104	1201160	25	2, 3, 4, 5, 6
53	GREENECK	CEILING	SHADE SHIP	CENR.	75	0.2	1300	0.01	1.60	0.104	1201160	25	2, 3, 4, 5, 6
54	GREENECK	CEILING	SHADE SHIP	CENR.	75	0.2	1300	0.01	1.60	0.104	1201160	25	2, 3, 4, 5, 6
55	GREENECK	CEILING	SHADE SHIP	CENR.	75	0.2	1300	0.01	1.60	0.104	1201160	25	2, 3, 4, 5, 6
56	GREENECK	CEILING	SHADE SHIP	CENR.	75	0.2	1300	0.01	1.60	0.104	1201160	25	2, 3, 4, 5, 6
57	GREENECK	CEILING	SHADE SHIP	CENR.	75	0.2	1300	0.01	1.60	0.104	1201160	25	2, 3, 4, 5, 6
58	GREENECK	CEILING	SHADE SHIP	CENR.	75	0.2	1300	0.01	1.60	0.104	1201160	25	2, 3, 4, 5, 6
59	GREENECK	CEILING	SHADE SHIP	CENR.	75	0.2	1300	0.01	1.60	0.104	1201160	25	2, 3, 4, 5, 6
60	GREENECK	CEILING	SHADE SHIP	CENR.	75	0.2	1300	0.01	1.60	0.104	1201160	25	2, 3, 4, 5, 6
61	GREENECK	CEILING	SHADE SHIP	CENR.	75	0.2	1300	0.01	1.60	0.104	1201160	25	2, 3, 4, 5, 6
62	GREENECK	CEILING	SHADE SHIP	CENR.	75	0.2	1300	0.01	1.60	0.104	1201160	25	2, 3, 4, 5, 6
63	GREENECK	CEILING	SHADE SHIP	CENR.	75	0.2	1300	0.01	1.60	0.104	1201160	25	2, 3, 4, 5, 6
64	GREENECK	CEILING	SHADE SHIP	CENR.	75	0.2	1300	0.01	1.60	0.104	1201160	25	2, 3, 4, 5, 6
65	GREENECK	CEILING	SHADE SHIP	CENR.	75	0.2	1300	0.01	1.60	0.104	1201160	25	2, 3, 4, 5, 6
66	GREENECK	CEILING	SHADE SHIP	CENR.	75	0.2	1300	0.01	1.60	0.104	1201160	25	2, 3, 4, 5, 6
67	GREENECK	CEILING	SHADE SHIP	CENR.	75	0.2	1300	0.01	1.60	0.104	1201160	25	2, 3, 4, 5, 6
68	GREENECK	CEILING	SHADE SHIP	CENR.	75	0.2	1300	0.01	1.60	0.104	1201160	25	2, 3, 4, 5, 6
69	GREENECK	CEILING	SHADE SHIP	CENR.	75	0.2	1300	0.01	1.60	0.104	1201160	25	2, 3, 4, 5, 6
70	GREENECK	CEILING	SHADE SHIP	CENR.	75	0.2	1300	0.01	1.60	0.104	1201160	25	2, 3, 4, 5, 6
71	GREENECK	CEILING	SHADE SHIP	CENR.	75	0.2	1300	0.01	1.60	0.104	1201160	25	2, 3, 4, 5, 6
72	GREENECK	CEILING	SHADE SHIP	CENR.	75	0.2	1300	0.01	1.60	0.104	1201160	25	2, 3, 4, 5, 6
73	GREENECK	CEILING	SHADE SHIP	CENR.	75	0.2	1300	0.01	1.60	0.104	1201160	25	2, 3, 4, 5, 6
74	GREENECK	CEILING	SHADE SHIP	CENR.	75	0.2	1300	0.01	1.60	0.104	1201160	25	2, 3, 4, 5, 6
75	GREENECK	CEILING	SHADE SHIP	CENR.	75	0.2	1300	0.01	1.60	0.104	1201160	25	2, 3, 4, 5, 6
76	GREENECK	CEILING	SHADE SHIP	CENR.	75	0.2	1300	0.01	1.60	0.104	1201160	25	2, 3, 4, 5, 6
77	GREENECK	CEILING	SHADE SHIP	CENR.	75	0.2	1300	0.01	1.60	0.104	1201160	25	2, 3, 4, 5, 6
78	GREENECK	CEILING	SHADE SHIP	CENR.	75	0.2	1300	0.01	1.60	0.104	1201160	25	2, 3, 4, 5, 6
79	GREENECK	CEILING	SHADE SHIP	CENR.	75	0.2	1300	0.01	1.60	0.104	1201160	25	2, 3, 4, 5, 6
80	GREENECK	CEILING	SHADE SHIP	CENR.	75	0.2	1300	0.01	1.60	0.104	1201160	25	2, 3, 4, 5, 6
81	GREENECK	CEILING	SHADE SHIP	CENR.	75	0.2	1300	0.01	1.60	0.104	1201160	25	2, 3, 4, 5, 6
82	GREENECK	CEILING	SHADE SHIP	CENR.	75	0.2	1300	0.01	1.60	0.104	1201160	25	2, 3, 4, 5, 6
83	GREENECK	CEILING	SHADE SHIP	CENR.	75	0.2	1300	0.01	1.60	0.104	1201160	25	2, 3, 4, 5, 6
84	GREENECK	CEILING	SHADE SHIP	CENR.	75	0.2	1300	0.01	1.60	0.104	1201160	25	2, 3, 4, 5, 6
85	GREENECK	CEILING	SHADE SHIP	CENR.	75	0.2	1300	0.01	1.60	0.104	1201160	25	2, 3, 4, 5, 6
86	GREENECK	CEILING	SHADE SHIP	CENR.	75	0.2	1300	0.01	1.60	0.104	1201160	25	2, 3, 4, 5, 6
87	GREENECK	CEILING	SHADE SHIP	CENR.	75	0.2	1300	0.01	1.60	0.104	1201160	25	2, 3, 4, 5, 6
88	GREENECK	CEILING	SHADE SHIP	CENR.	75	0.2	1300	0.01	1.60	0.104	1201160	25	2, 3, 4, 5, 6
89	GREENECK	CEILING	SHADE SHIP	CENR.	75	0.2	1300	0.01	1.60	0.104	1201160	25	2, 3, 4, 5, 6
90	GREENECK	CEILING	SHADE SHIP	CENR.	75	0.2	1300	0.01	1.60	0.104	1201160	25	2, 3, 4, 5, 6
91	GREENECK	CEILING	SHADE SHIP	CENR.	75	0.2	1300	0.01	1.60	0.104	1201160	25	2, 3, 4, 5, 6
92	GREENECK	CEILING	SHADE SHIP	CENR.	75	0.2	1300	0.01	1.60	0.104	1201160	25	2, 3, 4, 5, 6
93	GREENECK	CEILING	SHADE SHIP	CENR.	75	0.2	1300	0.01	1.60	0.104	1201160	25	2, 3, 4, 5, 6
94	GREENECK	CEILING	SHADE SHIP	CENR.	75	0.2	1300	0.01	1.60	0.104	1201160	25	2, 3, 4, 5, 6
95	GREENECK	CEILING											



James R. Childers
Architect, Inc.
316 Lexington Avenue
Fort Smith, AR 72901
479-783-2480
www.childersarchitect.com



CHEROKEE NATION ENTERTAINMENT
FORT GIBSON CASINO

FORT GIBSON, OKLAHOMA

AS-BUILT
DRAWINGS

613	08-0
-----	------

MO.05

MECHANICAL SCHEDULES

ELECTRIC UNIT HEATER SCHEDULE

MANUFACTURER MODEL	LOCATION	CAPACITY MBH	ELECTRICAL KV	AMPS	OPERATING VOLTAGE	WEIGHT LBS	REMARKS
1. BROWN FIRE RIBBER	10-2 ROOM	10.2	3.0	15.5	200-300	25	1.2, 3
2. PROVIDE SURFACE MOUNTING KIT.							3. 20" INHIBITED PROP-CL. COIL.

HEATING WATER UNIT HEATER SCHEDULE

MANUFACTURER MODEL	LOCATION	T RE MBH	CAPACITY MBH	AMPS	OPERATING VOLTAGE	WEIGHT LBS	REMARKS
1. BROWN FIRE RIBBER	10-2 ROOM	10.2	3.0	15.5	200-300	25	1.2, 3
2. PROVIDE SURFACE MOUNTING KIT.							3. 20" INHIBITED PROP-CL. COIL.

AIR BALANCE SCHEDULE

UNIT	SUPPLY	RETURN	OUTSIDE	E-HAUST	SUPPLY	RETURN	OUTSIDE	E-HAUST
1. BROWN FIRE RIBBER	10-2 ROOM	10.2	3.0	15.5	200-300	25	1.2, 3	3. 20" INHIBITED PROP-CL. COIL.
2. PROVIDE SURFACE MOUNTING KIT.								3. 20" INHIBITED PROP-CL. COIL.

AIR DISTRIBUTION SCHEDULE

MANUFACTURER MODEL	APPROX RANGE	SERVICE T RE	MAX. INCH SIE	REMARKS
1. BROWN FIRE RIBBER	10-2 ROOM	10.2	3.0	15.5
2. PROVIDE SURFACE MOUNTING KIT.				3. 20" INHIBITED PROP-CL. COIL.

1. COORDINATE EXTERIOR COLOR FINISH AND E-FACT LOCATION WITH ARCHITECT.
2. PROVIDE SQUARE TO ROUND TRANSITION FROM FACTORY.
3. 20" INHIBITED PROP-CL. COIL.
4. 20" INHIBITED PROP-CL. COIL.



James R. Childers
Architect, Inc.

Professional Engineer
No. 10000
State of Oklahoma

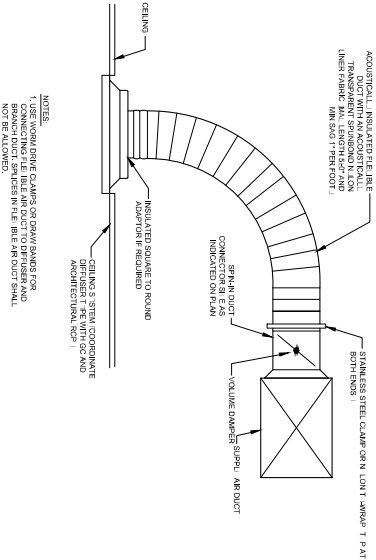


CHEROKEE NATION ENTERTAINMENT
FORT GIBSON CASINO
FORT GIBSON, OKLAHOMA

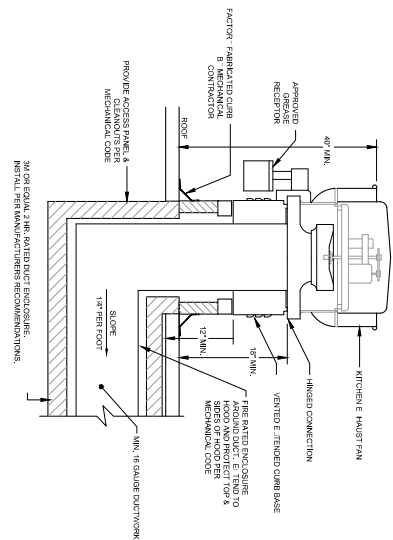
AS-BUILT
DRAWINGS

DATE	BY	CHKD
02/28/13	06/07	

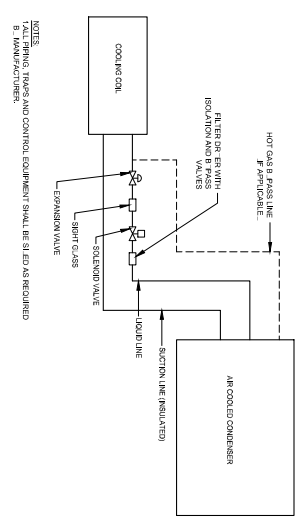
M.O.06
MECHANICAL
SCHEDULES



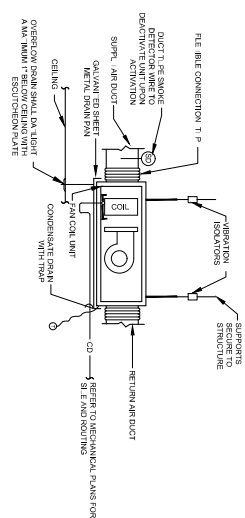
A CEILING DIFFUSER WITH FILE DUCT



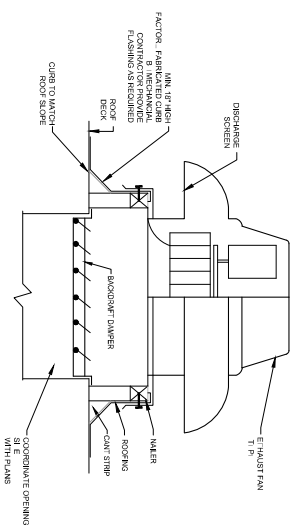
B KITCHEN HOOD E-EXHAUST FAN



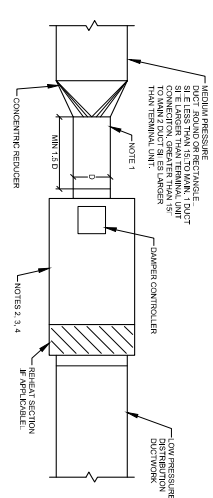
C SPLIT S-STEM D PIPING



D HORIZONTAL FAN COIL UNIT (W/O FLOAT)



E ROOF DOWNBLAST E-EXHAUST FAN



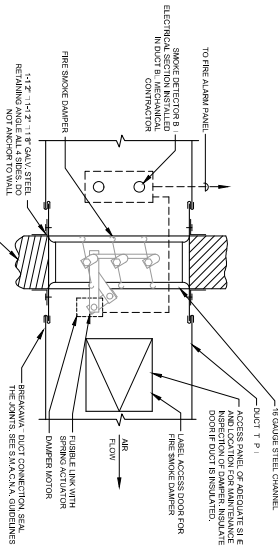
F TERMINAL BOX



A FIRE SMOKE DAMPER

MO.08 / NTS

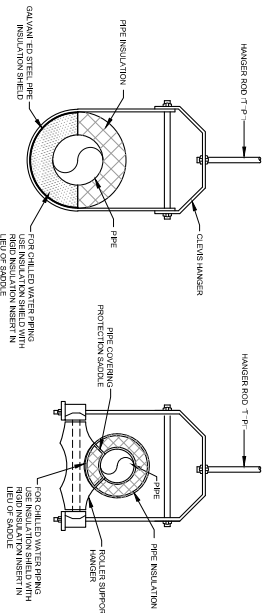
1. DAMPER SHALL BE CONSTRUCTED, TESTED & INSTALLED IN ACCORDANCE WITH ALL STANDARDS 908 & 905.
2. REFER TO ELECTRICAL DRAWINGS FOR ELECTRICAL CONNECTIONS.
3. DAMPER MANUFACTURER'S LISTING.



C PIPE HANGER FOR INSULATED PIPING

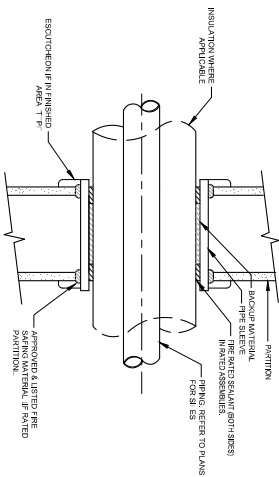
MO.08 / NTS

1. USE CLIPS HANGERS FOR 1\"/>



C PIPE THROUGH WALL

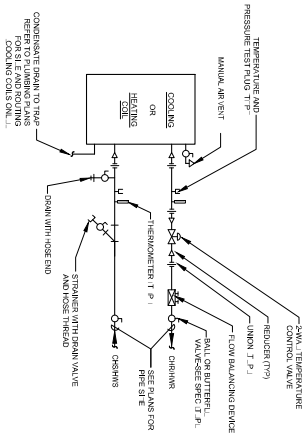
MO.08 / NTS



D 2-WAY COOLING OR HEATING COIL

MO.08 / NTS

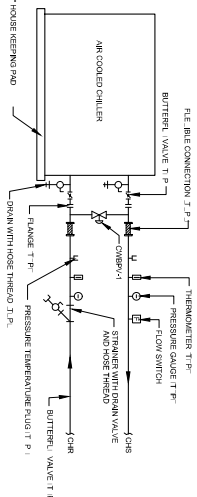
1. COILS FLOW BALANCING DEVICE.
2. COILS FLOW BALANCING DEVICE.
3. AIR HANDLERS SHARING COILS OPERATES THAN 20 BALANCING DEVICE. CONTROL VALVE TO BE PRESSURE INDEPENDENT.



E AIR COOLED CHILLER PIPING

MO.08 / NTS

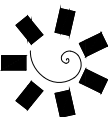
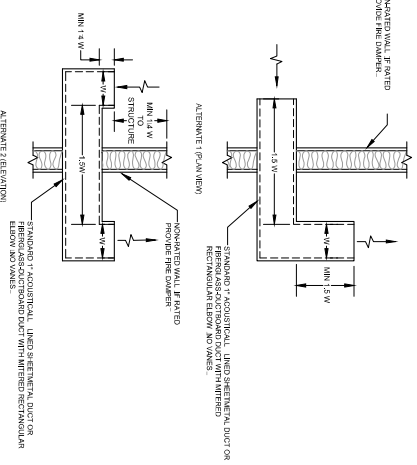
1. COILS FLOW BALANCING DEVICE.
2. COILS FLOW BALANCING DEVICE.
3. AIR HANDLERS SHARING COILS OPERATES THAN 20 BALANCING DEVICE. CONTROL VALVE TO BE PRESSURE INDEPENDENT.

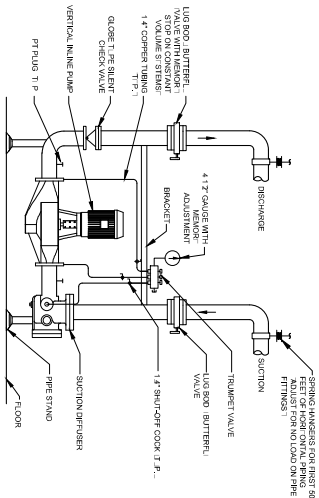


E TRANSFER DUCT

MO.08 / NTS

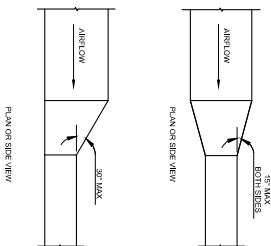
1. SEE PLANS FOR SIZE AND LOCATION OF AIR TRANSFER DUCT.



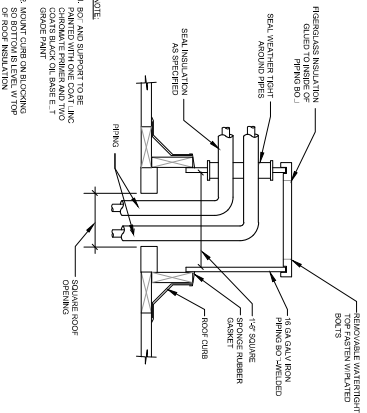
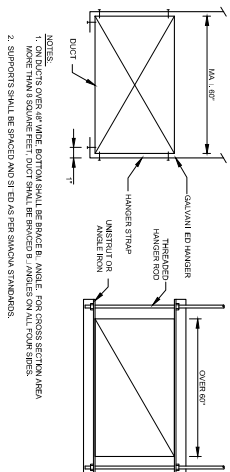


A
VERTICAL INLINE PUMP
2 1/2\"/>

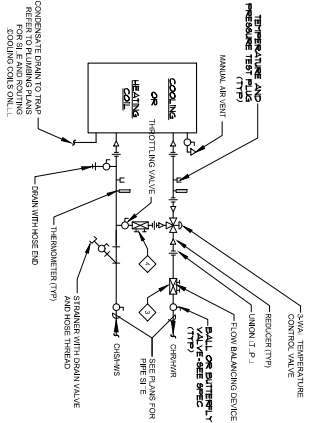
B
DUCT TRANSITION
1\"/>



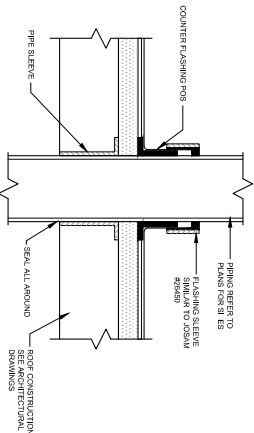
C
DUCT HANGER SUPPORT
1\"/>



D
PIPING DOG HOUSE
1\"/>

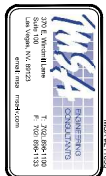


E
3-WAY COOLING OR HEATING COIL
1\"/>



F
PIPE THROUGH ROOF
1\"/>





MECH. & ELEC.

DATE: 07-28-13

BY: MO-11

PROJECT: MECH. & ELEC. DRAWINGS

MECHANICAL AND ELECTRICAL DIAGRAMS

CHEROKEE NATION ENTERTAINMENT FORT GIBSON CASINO

FORT GIBSON, OKLAHOMA

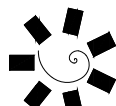


DATE:

PROJECT:



James R. Childers
Architect, Inc.
1000 N. 10th St., Suite 100
Fort Gibson, Oklahoma 74401
www.jameschilders.com

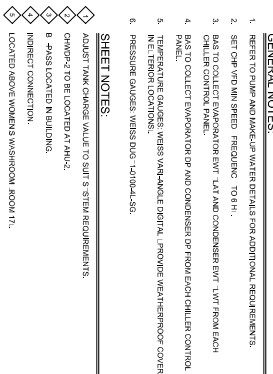


MECHANICAL AND ELECTRICAL DIAGRAMS



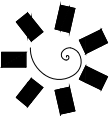
**James R. Childers
Architect, Inc.**

3114 Langston Avenue
Ft. Worth, TX 76102
817.343.9220
www.jrchitect.com



A CHILLED WATER PIPING DIAGRAM





James R. Childers
Architect, Inc.

www.jrchilders.com
P.O. Box 447
Fort Gibson, Oklahoma 74401



CHEROKEE NATION ENTERTAINMENT
FORT GIBSON CASINO
FORT GIBSON, OKLAHOMA

PROJECT: AS-BUILT DRAWINGS

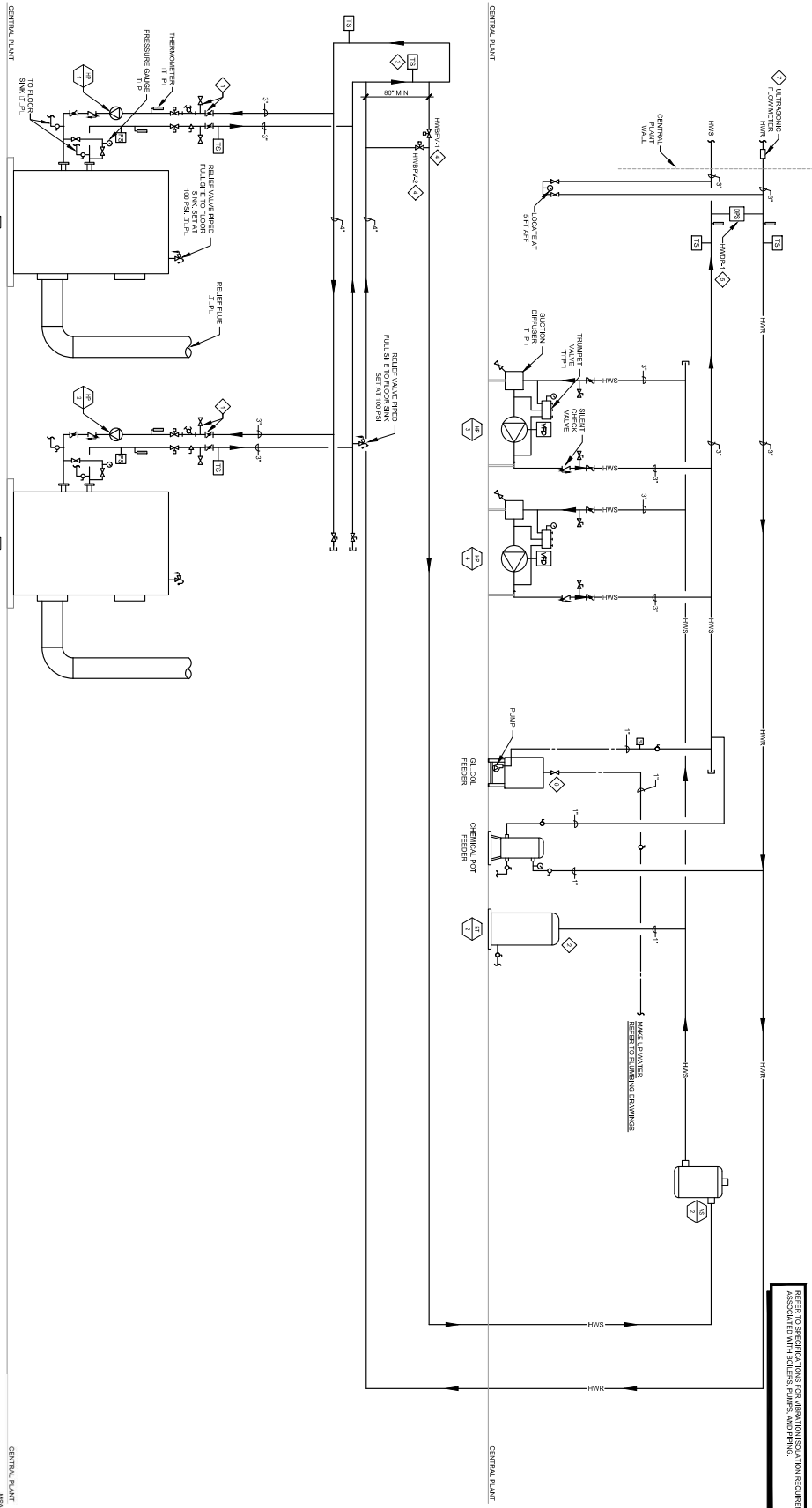
DATE	02/28/13	08:07
PER: M0.15		
DESIGNED BY		
CHECKED BY		
IN CHARGE		

MECHANICAL PIPING DRAWINGS

DATE	02/28/13	08:07
PER: M0.15		
DESIGNED BY		
CHECKED BY		
IN CHARGE		

GENERAL NOTES:

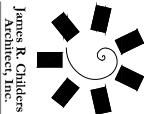
- TEMPERATURE GAUGES: WEISS VARIO-MATE DIGITAL. PROVIDE WEATHERPROOF COVER IN EXTERIOR LOCATIONS.
 - PRESSURE GAUGES: WEISS DUG H100-4-SG.
- SHEET NOTES:**
- REFER TO SPECIFICATIONS FOR VIBRATION ISOLATION REQUIREMENTS ASSOCIATED WITH BOILERS, PUMPS, AND PIPING.
 - ADJUST CHANGE TO SUIT 5" STIM REQUIREMENTS.
 - LOCATE TRANSMITTER MOUNT ON BRIDEL INC.
 - THIS VALVE INSTALLATION SPECIFICATION VALVE/BOX BR-HP SERIES, ALTERNATE THREE-WAY VALVE.
 - HWB-2 TO BE LOCATED AT A4.2.
 - INDIRECT CONNECTION.
 - LOCATED IN WOMEN'S WASHROOM CEILING ROOM 77.



A HEATING WATER PIPING DIAGRAM
M0.15
NOTE: REFER TO A4.2 FOR BOILER ROOM DETAILS



- GENERAL NOTES:**
1. CONTRACTOR SHALL BE RESPONSIBLE FOR ALL CUTTING AND PATCHING AS REQUIRED TO ACCOMMODATE THIS WORK.
 2. REFER TO THE MECHANICAL CHASISSE DRAWING TO THE RIGHT OF THIS DRAWING FOR MECHANICAL CHASISSE DETAILS AND INSTALLATION REQUIREMENTS. NECESSARY. SHOW ALL COMPONENTS REQUIRED.



James R. Childers
Architect, Inc.

James R. Childers, Inc.
1000 West 10th Street
Fort Gibson, OK 74401
www.jamesrchilders.com



**CHEROKEE NATION ENTERTAINMENT
FORT GIBSON CASINO**

FORT GIBSON, OKLAHOMA

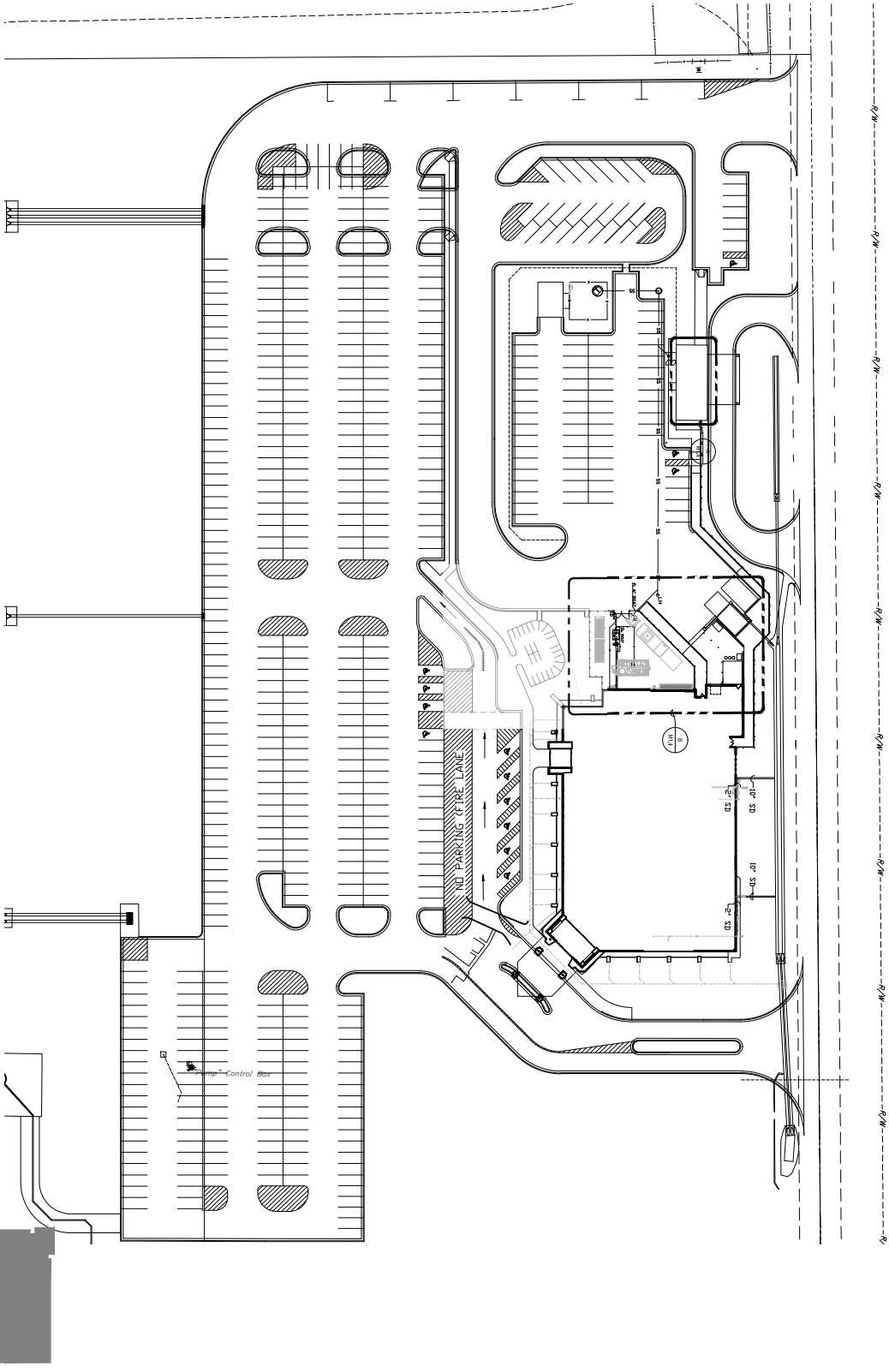
MECHANICAL
AS-BUILT
DRAWINGS

NO.	DATE	DESCRIPTION
1	02/28/13	ISSUED FOR PERMIT
2	02/28/13	ISSUED FOR CONSTRUCTION
3	02/28/13	ISSUED FOR AS-BUILT

DATE: 02/28/13 08:07

PROJECT: M1.00

MECHANICAL SITE PLAN



A MECHANICAL SITE PLAN
M1.00



GENERAL NOTES:

1. ACCESS ROOMS ARE REQUIRED FOR ALL EQUIPMENT INSTALLATION ABOVE ACCESSIBLE CEILING. ACCESSIBLE CEILING SHALL BE COORDINATE E. ACT LOCATION OF ALL ACCESS ROOMS WITH ARCHITECT PRIOR TO INSTALLATION.
2. VAPOR BARRIER FOR ALL HANGERS SHALL BE COORDINATE E. PRIOR TO INSTALLATION.
3. VAPOR BARRIER FOR ALL HANGERS SHALL BE COORDINATE E. PRIOR TO INSTALLATION.
4. VAPOR BARRIER FOR ALL HANGERS SHALL BE COORDINATE E. PRIOR TO INSTALLATION.
5. THE MECHANICAL CONTRACTOR SHALL VERIFY THE LOCATION OF ALL ROOF MOUNTED EQUIPMENT AND DUCTWORK WITH ARCHITECT AND STRUCTURAL ENGINEER PRIOR TO COMMENCING WORK.

SHEET NOTES:

1. 4" E. MUST GO UP TO EEL.
2. 10" E. MUST GO UP TO EEL.
3. 10" E. MUST GO UP TO EEL.
4. 10" E. MUST GO UP TO EEL.
5. 10" E. MUST GO UP TO EEL.
6. 10" E. MUST GO UP TO EEL.
7. 10" E. MUST GO UP TO EEL.
8. 10" E. MUST GO UP TO EEL.
9. 10" E. MUST GO UP TO EEL.
10. 10" E. MUST GO UP TO EEL.
11. 10" E. MUST GO UP TO EEL.
12. 10" E. MUST GO UP TO EEL.
13. 10" E. MUST GO UP TO EEL.
14. 10" E. MUST GO UP TO EEL.
15. 10" E. MUST GO UP TO EEL.
16. 10" E. MUST GO UP TO EEL.
17. 10" E. MUST GO UP TO EEL.
18. 10" E. MUST GO UP TO EEL.
19. 10" E. MUST GO UP TO EEL.
20. 10" E. MUST GO UP TO EEL.
21. 10" E. MUST GO UP TO EEL.
22. 10" E. MUST GO UP TO EEL.
23. 10" E. MUST GO UP TO EEL.
24. 10" E. MUST GO UP TO EEL.
25. 10" E. MUST GO UP TO EEL.
26. 10" E. MUST GO UP TO EEL.
27. 10" E. MUST GO UP TO EEL.
28. 10" E. MUST GO UP TO EEL.
29. 10" E. MUST GO UP TO EEL.
30. 10" E. MUST GO UP TO EEL.
31. 10" E. MUST GO UP TO EEL.
32. 10" E. MUST GO UP TO EEL.
33. 10" E. MUST GO UP TO EEL.
34. 10" E. MUST GO UP TO EEL.
35. 10" E. MUST GO UP TO EEL.
36. 10" E. MUST GO UP TO EEL.
37. 10" E. MUST GO UP TO EEL.
38. 10" E. MUST GO UP TO EEL.
39. 10" E. MUST GO UP TO EEL.
40. 10" E. MUST GO UP TO EEL.
41. 10" E. MUST GO UP TO EEL.
42. 10" E. MUST GO UP TO EEL.
43. 10" E. MUST GO UP TO EEL.
44. 10" E. MUST GO UP TO EEL.
45. 10" E. MUST GO UP TO EEL.
46. 10" E. MUST GO UP TO EEL.
47. 10" E. MUST GO UP TO EEL.
48. 10" E. MUST GO UP TO EEL.
49. 10" E. MUST GO UP TO EEL.
50. 10" E. MUST GO UP TO EEL.
51. 10" E. MUST GO UP TO EEL.
52. 10" E. MUST GO UP TO EEL.
53. 10" E. MUST GO UP TO EEL.
54. 10" E. MUST GO UP TO EEL.
55. 10" E. MUST GO UP TO EEL.
56. 10" E. MUST GO UP TO EEL.
57. 10" E. MUST GO UP TO EEL.
58. 10" E. MUST GO UP TO EEL.
59. 10" E. MUST GO UP TO EEL.
60. 10" E. MUST GO UP TO EEL.
61. 10" E. MUST GO UP TO EEL.
62. 10" E. MUST GO UP TO EEL.
63. 10" E. MUST GO UP TO EEL.
64. 10" E. MUST GO UP TO EEL.
65. 10" E. MUST GO UP TO EEL.
66. 10" E. MUST GO UP TO EEL.
67. 10" E. MUST GO UP TO EEL.
68. 10" E. MUST GO UP TO EEL.
69. 10" E. MUST GO UP TO EEL.
70. 10" E. MUST GO UP TO EEL.
71. 10" E. MUST GO UP TO EEL.
72. 10" E. MUST GO UP TO EEL.
73. 10" E. MUST GO UP TO EEL.
74. 10" E. MUST GO UP TO EEL.
75. 10" E. MUST GO UP TO EEL.
76. 10" E. MUST GO UP TO EEL.
77. 10" E. MUST GO UP TO EEL.
78. 10" E. MUST GO UP TO EEL.
79. 10" E. MUST GO UP TO EEL.
80. 10" E. MUST GO UP TO EEL.
81. 10" E. MUST GO UP TO EEL.
82. 10" E. MUST GO UP TO EEL.
83. 10" E. MUST GO UP TO EEL.
84. 10" E. MUST GO UP TO EEL.
85. 10" E. MUST GO UP TO EEL.
86. 10" E. MUST GO UP TO EEL.
87. 10" E. MUST GO UP TO EEL.
88. 10" E. MUST GO UP TO EEL.
89. 10" E. MUST GO UP TO EEL.
90. 10" E. MUST GO UP TO EEL.
91. 10" E. MUST GO UP TO EEL.
92. 10" E. MUST GO UP TO EEL.
93. 10" E. MUST GO UP TO EEL.
94. 10" E. MUST GO UP TO EEL.
95. 10" E. MUST GO UP TO EEL.
96. 10" E. MUST GO UP TO EEL.
97. 10" E. MUST GO UP TO EEL.
98. 10" E. MUST GO UP TO EEL.
99. 10" E. MUST GO UP TO EEL.
100. 10" E. MUST GO UP TO EEL.

The diagram is a detailed mechanical plan for the West Mechanical Plan (M1.1) of the Cherokee Nation Entertainment Fort Gibson Casino. It shows a large rectangular building footprint with various rooms, corridors, and service areas. The plan is overlaid with a grid system: horizontal grid lines are labeled A through 10, and vertical grid lines are labeled 1 through 22. Key features include:

- Ductwork:** Extensive ductwork is shown throughout the plan, with various sizes (e.g., 18" x 24", 24" x 36", 36" x 48") and flow directions indicated by arrows.
- Equipment:** Several pieces of mechanical equipment are shown, including rooftop units, indoor units, and fans. Some are labeled with model numbers or specifications.
- Rooms and Areas:** Various rooms are labeled, such as 'MECH. ROOM', 'ELECT. ROOM', 'STORAGE', 'RESTROOM', 'KITCHEN', 'DINING', 'BAR', 'LOBBY', 'CORRIDOR', 'ELEVATOR', 'STAIRWELL', 'MECH. ROOM', 'ELECT. ROOM', 'STORAGE', 'RESTROOM', 'KITCHEN', 'DINING', 'BAR', 'LOBBY', 'CORRIDOR', 'ELEVATOR', 'STAIRWELL'.
- Matchlines:** The plan includes matchlines to other sheets, labeled 'SHEET M1.2' and 'SHEET M1.3'.
- North Arrow:** A north arrow is located in the bottom right corner of the plan.
- Scale:** A scale bar is located in the bottom right corner of the plan.
- Grid Lines:** The grid lines are clearly marked and labeled throughout the plan.

A WEST MECHANICAL PLAN
M1.1

The ME PLAN inset drawing shows the building footprint of the Cherokee Nation Entertainment Fort Gibson Casino. It is a simplified line drawing of the building's outline, showing its irregular shape and various wings. The main plan is indicated by a dashed line and a small square symbol, showing its location within the overall building footprint.

W&A ENGINEERS
CONSULTANTS
1000 N. 10th St.
Tulsa, OK 74103
P: 918.596.1133
F: 918.596.1133
www.wa-engineers.com

CHEROKEE NATION ENTERTAINMENT
FORT GIBSON CASINO
FORT GIBSON, OKLAHOMA

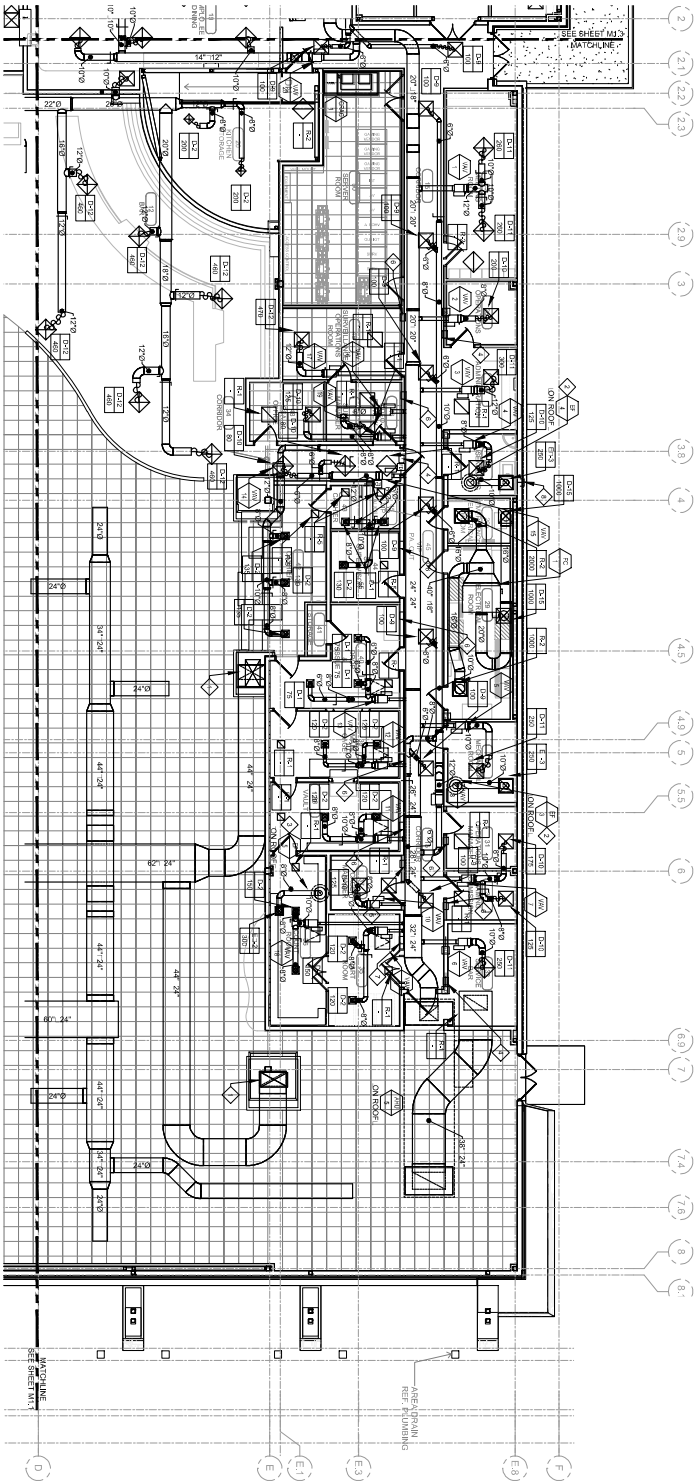
James R. Childers
Architect, Inc.
1000 N. 10th St.
Tulsa, OK 74103
P: 918.596.1133
F: 918.596.1133
www.jrchilders.com

W&A ENGINEERS
CONSULTANTS
1000 N. 10th St.
Tulsa, OK 74103
P: 918.596.1133
F: 918.596.1133
www.wa-engineers.com

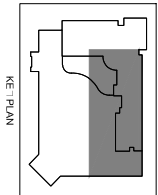
MECHANICAL
AS-BUILT
DRAWINGS

DATE: 02/28/13
BY: JRC
CHECKED: JRC
DATE: 02/28/13
BY: JRC
CHECKED: JRC

WEST MECHANICAL
PLAN
M1.1



A
M1.2
EAST MECHANICAL PLAN



- GENERAL NOTES:**
- ACCESS DOORS ARE REQUIRED FOR ALL DAMPERS INSTALLED ABOVE UNACCESSIBLE CEILING. COORDINATE LOCATION OF ALL ACCESS DOORS WITH ARCHITECT PRIOR TO INSTALLATION.
 - VERIFY LOCATION OF ALL THROUGH AIRS WITH ARCHITECT PRIOR TO INSTALLATION. VERIFY LOCATION OF ALL THROUGH AIRS WITH ARCHITECT PRIOR TO INSTALLATION. VERIFY LOCATION OF ALL THROUGH AIRS WITH ARCHITECT PRIOR TO INSTALLATION.
 - VERIFY AND COORDINATE FRAME AND BORDER TYPE REQUIREMENTS FOR AIR SERVICES WITH ARCHITECTURAL CEILING PLANS PRIOR TO ORDERING.
 - DUCT SIZES SHOW ARE THE CLEAR INSIDE DIMENSIONS.
 - THE MECHANICAL CONTRACTOR SHALL VERIFY THE LOCATION OF ALL ROOM LOCATED PRIOR TO COMMENCING WORK.
 - THE MECHANICAL CONTRACTOR SHALL COORDINATE LOCATION AND ROUTING OF HVAC EQUIPMENT AND DUCTWORK WITH OTHER TRADES PRIOR TO COMMENCING WORK.
 - ALL E-MAST OUTLETS SHALL BE LOCATED MIN. OF 10" FROM ANY OUTSIDE AIR INTAKE.
 - ALL CLIMATE, VENTING AND DRAINING OF ROOFS IN ROOMS MUST BE INSTALLED PRIOR TO COMMENCING WORK. VERIFY LOCATION OF ALL ROOMS WITH ARCHITECT PRIOR TO COMMENCING WORK.
 - CONTRACTOR SHALL BE RESPONSIBLE FOR ALL CUTTING AND PATCHING AS REQUIRED TO ACCOMMODATE THIS WORK.
 - REFER TO THE MECHANICAL DRAWINGS THAT APPLY TO THE WORK ON THE DRAWING. NECESSARY, SHOW ALL COMPONENTS REQUIRED.
 - INTERVAL, LINE THE FIRST 10-4" OF SUPPLY, AND RETURN DUCTWORK.

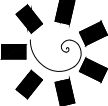
- SHEET NOTES:**
- 4" OF SUPPLY, 10" OF DUCT DOWN TO BELOW CEILING FLOOR. TERMINATE 2" OF ABOVE FINISH FLOOR.
 - 12" 11" E-MAST DUCT UP TO E-3, E-4.
 - 10" 11" E-MAST DUCT UP TO E-3, E-4.
 - PROVIDE 12" 11" OPENING FOR RETURN AIR PATH WITH FIRE DAMPER.
 - PROVIDE 10" 11" OPENING FOR RETURN AIR PATH WITH FIRE DAMPER.
 - PROVIDE 12" 11" OPENING FOR RETURN AIR PATH, PROVIDE SECURITY GRILLE.
 - PROVIDE 4" OF AIR VENT WITH WALL CAP.

**CHEROKEE NATION ENTERTAINMENT
FORT GIBSON CASINO**

FORT GIBSON, OKLAHOMA



James R. Childers
Architect, Inc.

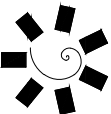


**EAST MECHANICAL
PLAN**

**AS-BUILT
DRAWINGS**

DATE:
02/28/13
05:07

M1.2



James R. Childers
Architect, Inc.

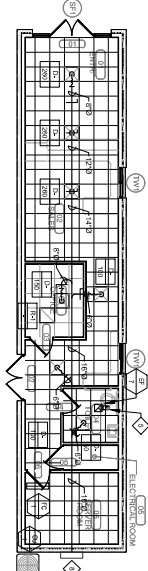
10000 N. 100th Ave., Suite 100
Oklahoma City, OK 73154
Tel: (405) 251-1000
Fax: (405) 251-1001
www.jamesrchilders.com



CHEROKEE NATION ENTERTAINMENT
FORT GIBSON CASINO
FORT GIBSON, OKLAHOMA

PROJECT	
AS-BUILT DRAWINGS	
DATE	02/28/13
BY	08/07
REVISIONS	
1	02/28/13
2	08/07

ENLARGED MECHANICAL PLAN	M1.4
DATE	02/28/13
BY	08/07



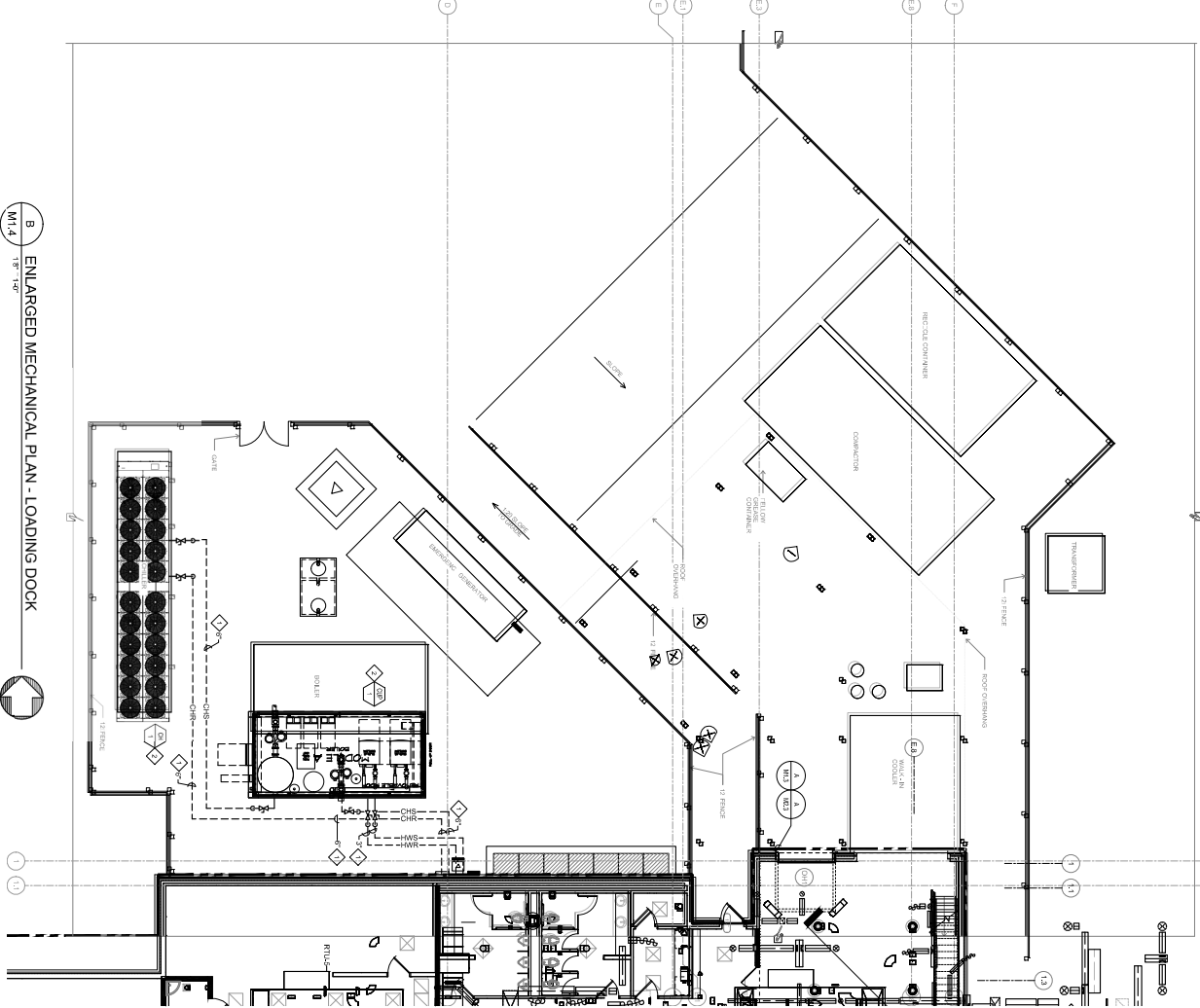
A
1/8" = 1'-0"
ENLARGED MECHANICAL PLAN - SMOKE SHOP

GENERAL NOTES:

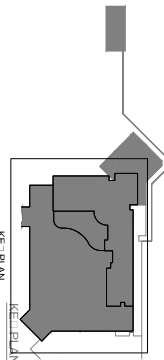
1. CONTRACTOR SHALL BE RESPONSIBLE FOR ALL CUTTING AND PATCHING AS REQUIRED TO ACCOMMODATE HIS WORK.
2. REFER TO THE MECHANICAL SCHEDULES THAT APPLY TO THE WORK ON THIS DRAWING. NECESSARY. SHOW ALL COMPONENTS REQUIRED.

SHEET NOTES:

- ◇ UNDERGROUND CABLES AND HEATING PIPES, DUCTS, PIPES WITH 1" OF GULF STATE THE PIPES, ALL ABOVE AND 4" OF DUCTS ON TOP OF TRENCHES 2' TYPICAL SIZE OF PROVIDE #10 REINFORCING BARS.
- ◇ 22" 27" 36" DUCT UP THRU ROOF.
- ◇ 6" 8" 10" DUCT UP THRU ROOF. TERMINATE WITH APPROVED ROOF CAP.
- ◇ NOT USED --
- ◇ PROVIDE PROGRAMMABLE THERMOSTAT AND WIRING TO RTU-1.
- ◇ F. RETURN 3 TON HEAT PUMP TO REMAIN AS IS.



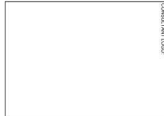
B
1/8" = 1'-0"
ENLARGED MECHANICAL PLAN - LOADING DOCK





James R. Childers
Architect, Inc.

Professional Engineer
No. 10000
State of Oklahoma
Exp. 12/31/2020

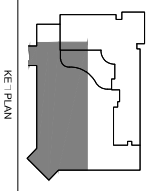


CHEROKEE NATION ENTERTAINMENT FORT GIBSON CASINO

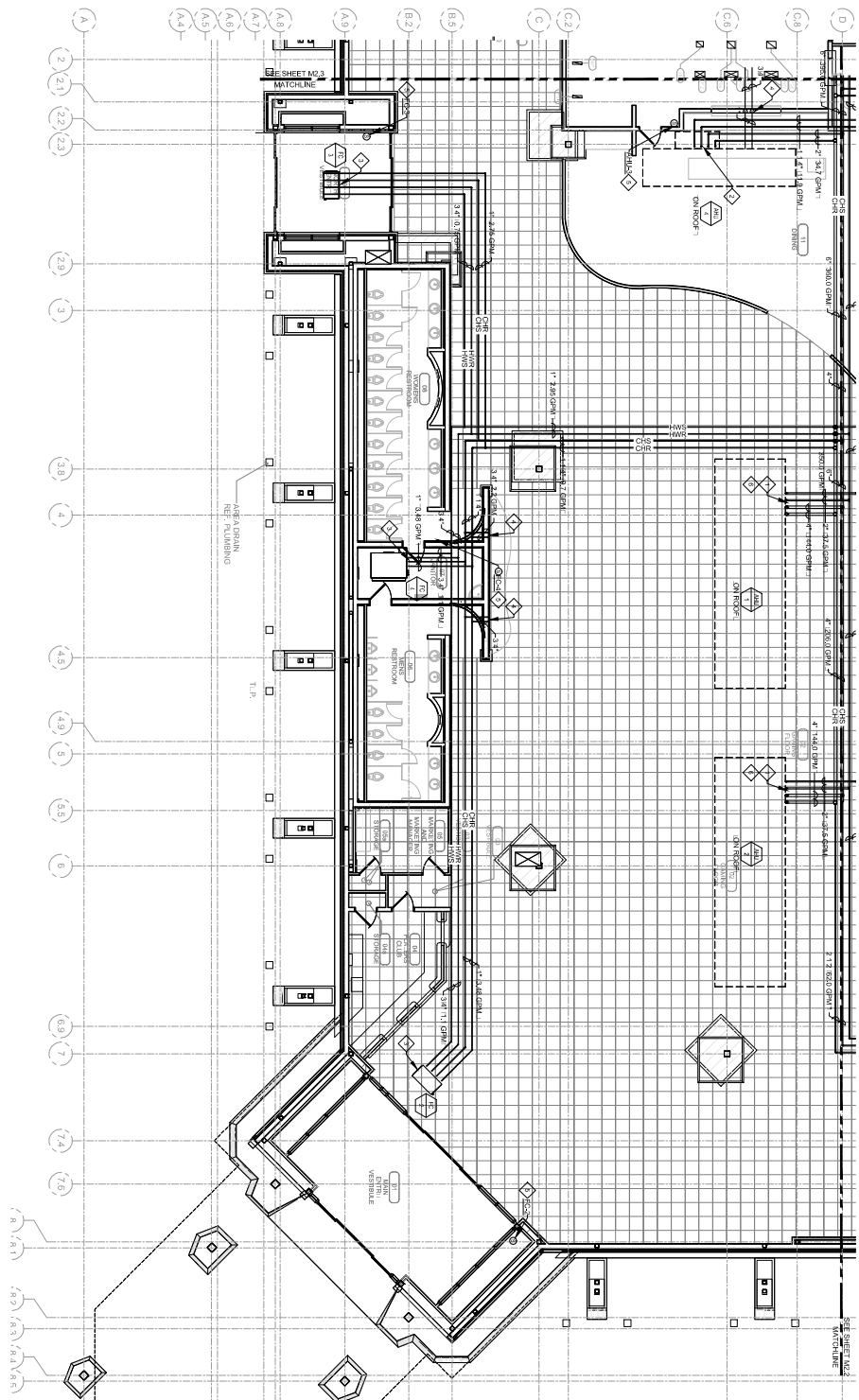
FORT GIBSON, OKLAHOMA

PROJECT NO. 10000
DRAWING NO. M2.1
DATE 02/28/13
BY JRC
CHECKED BY JRC
APPROVED BY JRC

WEST MECHANICAL
PIPING PLAN
M2.1
DATE 02/28/13
BY JRC
CHECKED BY JRC
APPROVED BY JRC

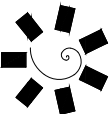


A WEST MECHANICAL PIPING PLAN



- GENERAL NOTES:
- THE MECHANICAL CONTRACTOR SHALL VERIFY THE LOCATION OF ALL ABOVE-GRADE EQUIPMENT AND ROOF PENETRATIONS WITH ARCHITECT AND STRUCTURAL ENGINEER PRIOR TO CONCRETING WORK.
 - THE CLIMATE, SIZING, AND SPACING OF PIPES IN FLOOR CAVES AND WALL STUDS SHALL BE ACCORDING TO THE 2015 INTERNATIONAL MECHANICAL AND PLUMBING CODE, INTERNATIONAL BUILDING CODE, AND ALL APPLICABLE LOCAL ORDINANCES.
 - CONTRACTOR SHALL BE RESPONSIBLE FOR ALL CUTTING AND PATCHING AS REQUIRED TO ACCOMMODATE HIS WORK.
 - REFER TO THE MECHANICAL DRAWINGS THAT APPLY TO THE WORK ON THIS DRAWING. THE CONTRACTOR SHALL BE RESPONSIBLE FOR COORDINATING ALL WORK WITH ALL OTHER TRADES NECESSARY. SHOW ALL COMPONENTS REQUIRED.

- SHEET NOTES:
- 1" CHORD AND 2" HANGDOWN UP TO 12'0" HEAD
 - 2" CHORD AND 1" HANGDOWN UP TO 12'0" HEAD
 - 3" CHORD AND 1" HANGDOWN UP TO 12'0" HEAD
 - 4" CHORD AND 1" HANGDOWN UP TO 12'0" HEAD
 - 5" CHORD AND 1" HANGDOWN UP TO 12'0" HEAD
 - 6" CHORD AND 1" HANGDOWN UP TO 12'0" HEAD
 - 8" CHORD AND 1" HANGDOWN UP TO 12'0" HEAD
 - 10" CHORD AND 1" HANGDOWN UP TO 12'0" HEAD
 - 12" CHORD AND 1" HANGDOWN UP TO 12'0" HEAD
 - 14" CHORD AND 1" HANGDOWN UP TO 12'0" HEAD
 - 16" CHORD AND 1" HANGDOWN UP TO 12'0" HEAD
 - 18" CHORD AND 1" HANGDOWN UP TO 12'0" HEAD
 - 20" CHORD AND 1" HANGDOWN UP TO 12'0" HEAD
 - 22" CHORD AND 1" HANGDOWN UP TO 12'0" HEAD
 - 24" CHORD AND 1" HANGDOWN UP TO 12'0" HEAD
 - 26" CHORD AND 1" HANGDOWN UP TO 12'0" HEAD
 - 28" CHORD AND 1" HANGDOWN UP TO 12'0" HEAD
 - 30" CHORD AND 1" HANGDOWN UP TO 12'0" HEAD
 - 32" CHORD AND 1" HANGDOWN UP TO 12'0" HEAD
 - 34" CHORD AND 1" HANGDOWN UP TO 12'0" HEAD
 - 36" CHORD AND 1" HANGDOWN UP TO 12'0" HEAD
 - 38" CHORD AND 1" HANGDOWN UP TO 12'0" HEAD
 - 40" CHORD AND 1" HANGDOWN UP TO 12'0" HEAD
 - 42" CHORD AND 1" HANGDOWN UP TO 12'0" HEAD
 - 44" CHORD AND 1" HANGDOWN UP TO 12'0" HEAD
 - 46" CHORD AND 1" HANGDOWN UP TO 12'0" HEAD
 - 48" CHORD AND 1" HANGDOWN UP TO 12'0" HEAD
 - 50" CHORD AND 1" HANGDOWN UP TO 12'0" HEAD
 - 52" CHORD AND 1" HANGDOWN UP TO 12'0" HEAD
 - 54" CHORD AND 1" HANGDOWN UP TO 12'0" HEAD
 - 56" CHORD AND 1" HANGDOWN UP TO 12'0" HEAD
 - 58" CHORD AND 1" HANGDOWN UP TO 12'0" HEAD
 - 60" CHORD AND 1" HANGDOWN UP TO 12'0" HEAD
 - 62" CHORD AND 1" HANGDOWN UP TO 12'0" HEAD
 - 64" CHORD AND 1" HANGDOWN UP TO 12'0" HEAD
 - 66" CHORD AND 1" HANGDOWN UP TO 12'0" HEAD
 - 68" CHORD AND 1" HANGDOWN UP TO 12'0" HEAD
 - 70" CHORD AND 1" HANGDOWN UP TO 12'0" HEAD
 - 72" CHORD AND 1" HANGDOWN UP TO 12'0" HEAD
 - 74" CHORD AND 1" HANGDOWN UP TO 12'0" HEAD
 - 76" CHORD AND 1" HANGDOWN UP TO 12'0" HEAD
 - 78" CHORD AND 1" HANGDOWN UP TO 12'0" HEAD
 - 80" CHORD AND 1" HANGDOWN UP TO 12'0" HEAD
 - 82" CHORD AND 1" HANGDOWN UP TO 12'0" HEAD
 - 84" CHORD AND 1" HANGDOWN UP TO 12'0" HEAD
 - 86" CHORD AND 1" HANGDOWN UP TO 12'0" HEAD
 - 88" CHORD AND 1" HANGDOWN UP TO 12'0" HEAD
 - 90" CHORD AND 1" HANGDOWN UP TO 12'0" HEAD
 - 92" CHORD AND 1" HANGDOWN UP TO 12'0" HEAD
 - 94" CHORD AND 1" HANGDOWN UP TO 12'0" HEAD
 - 96" CHORD AND 1" HANGDOWN UP TO 12'0" HEAD
 - 98" CHORD AND 1" HANGDOWN UP TO 12'0" HEAD
 - 100" CHORD AND 1" HANGDOWN UP TO 12'0" HEAD



James R. Childers
Architect, Inc.

www.jrchildersarchitect.com



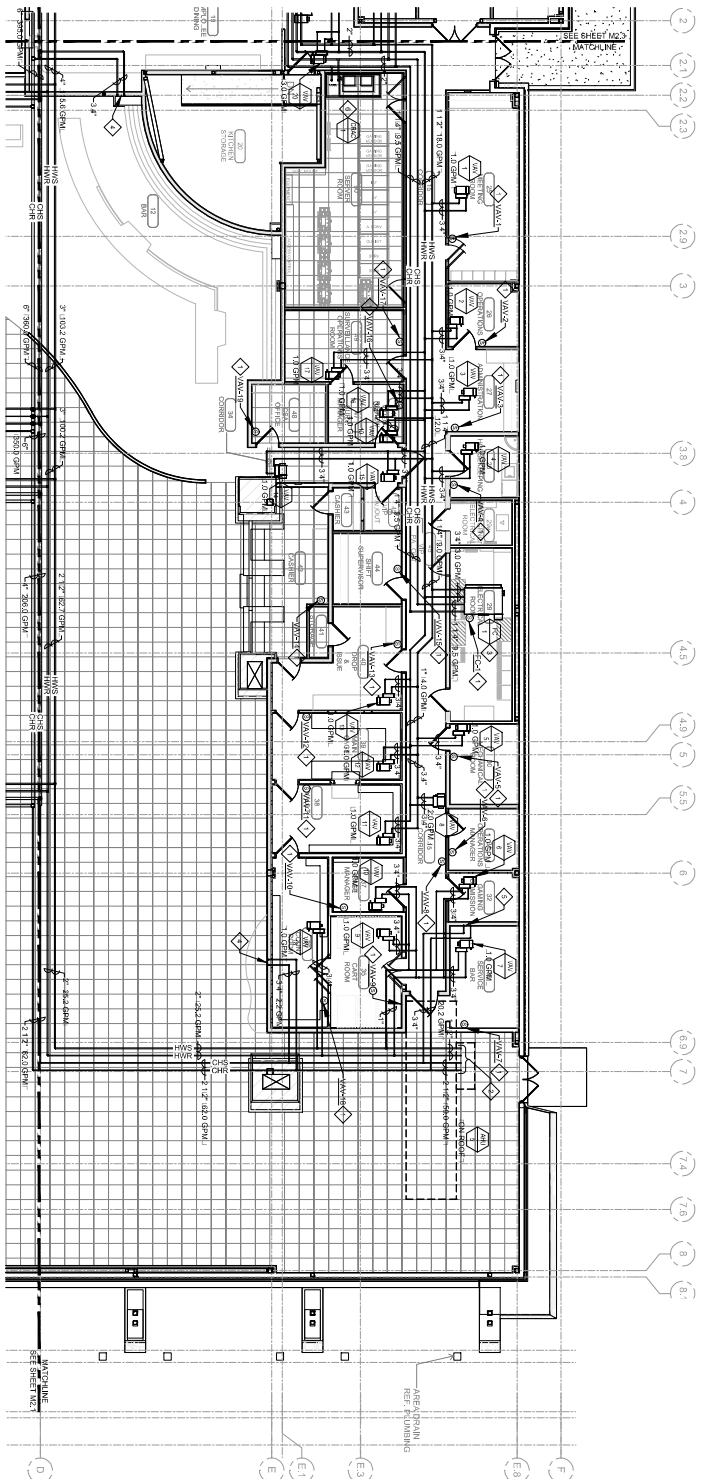
CHEROKEE NATION ENTERTAINMENT
FORT GIBSON CASINO
FORT GIBSON, OKLAHOMA

PROJECT	
AS-BUILT DRAWINGS	
DATE	02-28-13
DESIGNED BY	08-07
PROJECT NUMBER	M2.2
EAST MECHANICAL PIPING PLAN	

ME PLAN

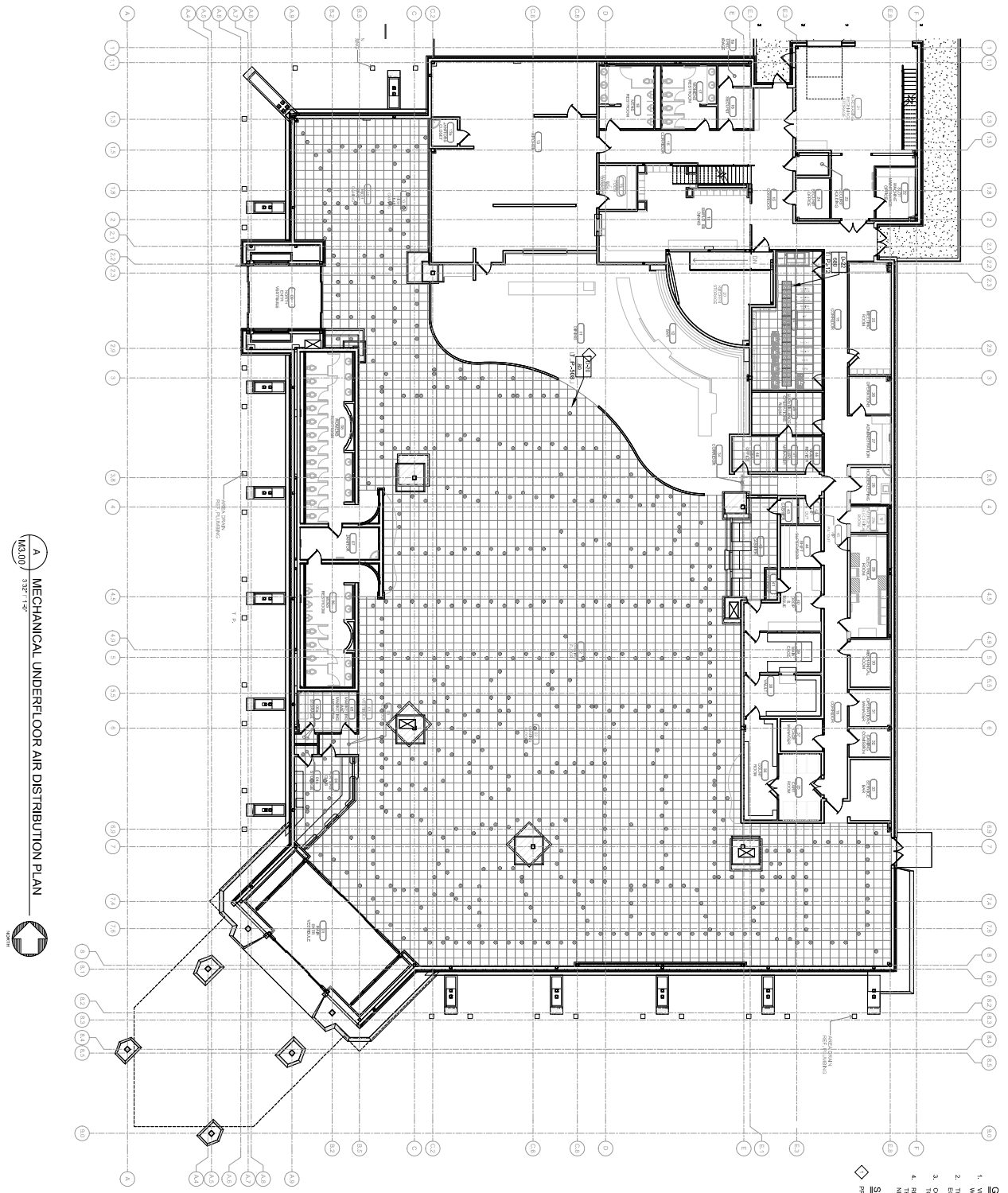
WORKSHEET

- GENERAL NOTES:**
- THE MECHANICAL CONTRACTOR SHALL VERIFY THE LOCATION OF ALL ROOF MOUNTED EQUIPMENT AND ROOF PENETRATIONS WITH ARCHITECT AND STRUCTURAL ENGINEER PRIOR TO COMMENCING WORK.
 - THE CUTTING, NOTCHING AND REMOVAL OF HOLES IN FLOOR JOIST AND WALL STUDS SHALL BE ACCORDING TO THE INTERNATIONAL BUILDING CODE. THE MECHANICAL CONTRACTOR SHALL BE RESPONSIBLE FOR ALL CUTTING AND PATCHING AS REQUIRED TO ACCOMMODATE HIS WORK.
 - REFER TO THE MECHANICAL LOADINGS THAT APPLY TO THE WORK ON THIS DRAWING. THE MECHANICAL CONTRACTOR SHALL BE RESPONSIBLE FOR THE DESIGN AND CONSTRUCTION OF ALL MECHANICAL EQUIPMENT, INCLUDING, BUT NOT LIMITED TO, THE FOLLOWING: PIPING, VALVES, HANGERS, AND SUPPORTS. NECESSARY, SHOW ALL COMPONENTS REQUIRED.
- SHEET NOTES:**
- PROVIDE SENSING AND WIRING UP TO FAN COIL, VAV/BAU, AS INDICATED.
 - 2.1/2" CHG CHD AND 1.1/2" MESHING UP TO TABLE.
 - 1.1/2" CHG CHD AND 3/4" MESHING UP TO ECL.
 - 3/4" CHG CHD DOWN IN WALL, TO BE INNER, COORDINATE FLOW REQUIREMENTS WITH MECHANICAL ENGINEER.
 - 3/4" CHG CHD DOWN IN WALL, BALANCE TO 28.0 GPM.
 - 1.1/2" CHG CHD DOWN IN WALL, BALANCE TO 28.1 GPM.



A EAST MECHANICAL PIPING PLAN
M2.2
1'-0" = 1'-0"

NORTH MECHANICAL
PIPING PLAN



A MECHANICAL UNDERFLOOR AIR DISTRIBUTION PLAN
M3.00

- GENERAL NOTES:**
1. VERIFY AND COORDINATE SPACE AND NUMBER OF AIR REQUIREMENTS FOR AIR SERVICES WITH ARCHITECTURAL, CEILING PLANS PRIOR TO ORDERING.
 2. THE MECHANICAL CONTRACTOR SHALL COORDINATE LOCATION AND ROUTING OF HVAC EQUIPMENT AND DUCTWORK WITH OTHER TRADES PRIOR TO COMMENCING WORK.
 3. CONTRACTOR SHALL BE RESPONSIBLE FOR ALL CUTTING AND PATCHING AS REQUIRED TO ACCOMMODATE THIS WORK.
 4. THESE DIAGRAMS PROVIDE GUIDANCE AS TO INSTALLATION INTENT AND DO NOT NECESSARILY SHOW ALL COMPONENTS REQUIRED.
- SHEET NOTES:**
- ◇ PROVIDE 500 TPO / DIFFUSERS.



02/26/13	08-07
OBJECT REFERENCE:	
M4.01	
MECHANICAL ROOF PLAN	