











James R. Childers  
Architect, Inc.  
100 South Main Street  
PO Box 100  
Tahlequah, OK 74961  
www.jrchilders.com



CHEROKEE NATION ENTERTAINMENT  
TAHLEQUAH, OKLAHOMA

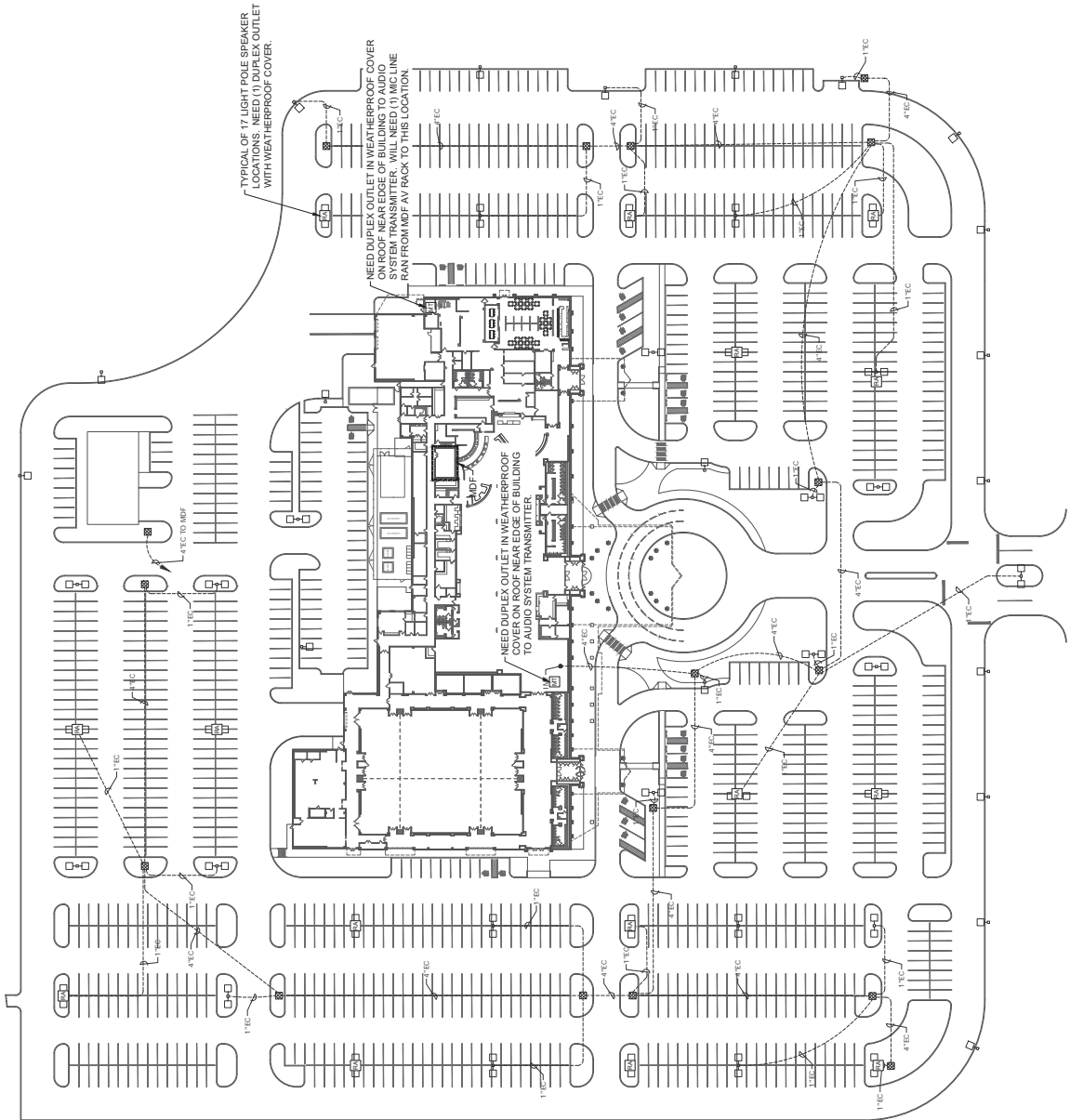
PROJECT NAME:  
ADDENDUM #15

NO.	REVISION	DATE

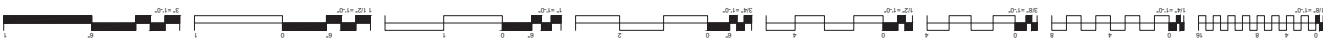
DATE: 07/13/2018  
TIME: 11:06



AV SITE PLAN



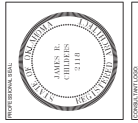
1 AV SITE PLAN  
SCALE: 1" = 50'-0"







James R. Childers  
Architect, Inc.  
100 South Park Street  
PO Box 100  
P.O. Box 100  
Tahlequah, OK 74464  
www.jrchilders.com



CONTRACT NO. 10000



CHEROKEE NATION ENTERTAINMENT  
TAHLEQUAH, OKLAHOMA

PROJECT NO. ADDENDUM #15

NO.	REVISION	DATE
1	ISSUED FOR PERMIT	07/13/2018
2	REVISION	
3	REVISION	
4	REVISION	
5	REVISION	
6	REVISION	
7	REVISION	
8	REVISION	
9	REVISION	
10	REVISION	

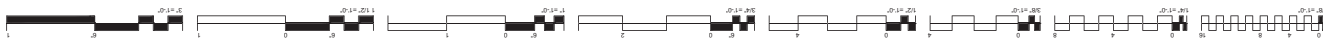
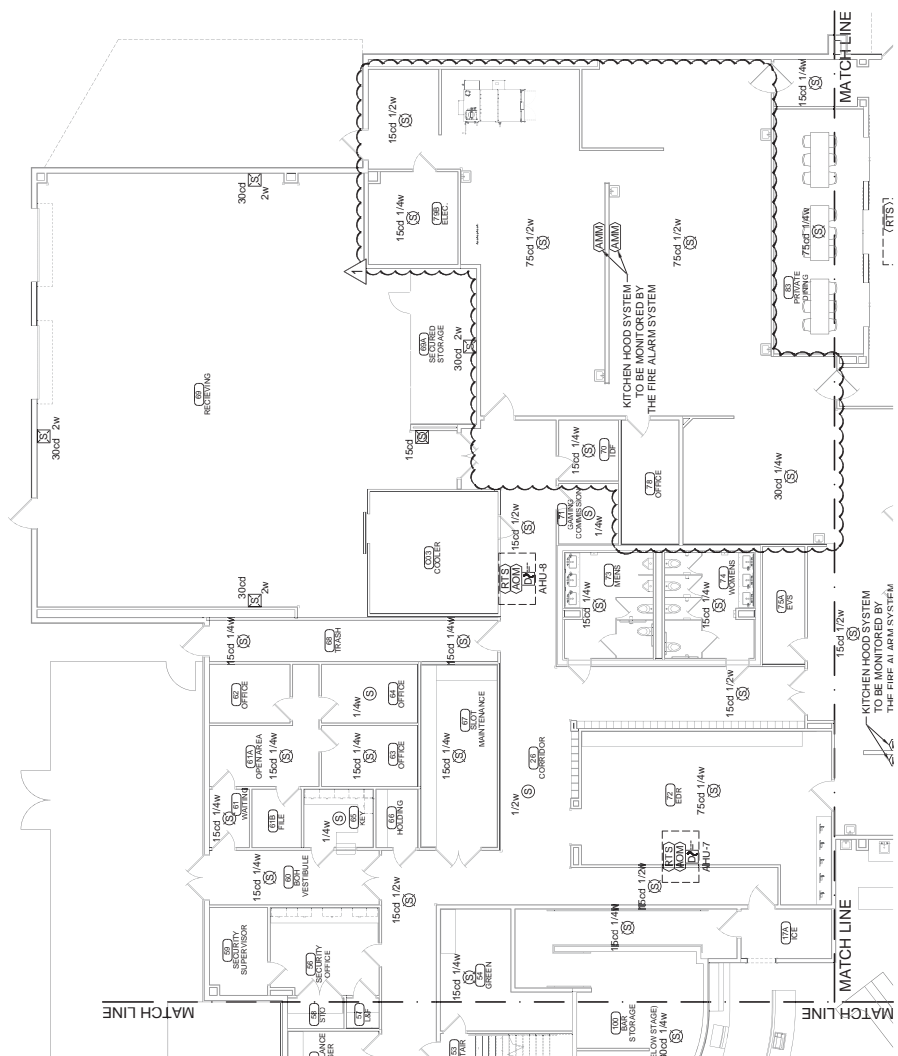
DATE: 07/13/2018  
TIME: 17:06

PROJECT: FA-104

FIRST FLOOR  
FIRE ALARM PLAN  
AREA 4



① FIRE ALARM PLAN - AREA 4  
SCALE: 1/8" = 1'-0"









## Tahlequah Casino Addendum 15

Date: July 13, 2018

### Plumbing

<u>Sheets</u>	<u>Description</u>
M0.1	Revised sheet index.
M0.3	Removed non-applicable remarks from modular central plant schedule. Added AS-2, revised selections. Revised boiler selections. Added ET-2. Revised hydronic pump selections. Added air cooled chiller schedule.
M0.4	Revised air handling unit selections.
M0.5	Changed water source heat pumps to 4-pipe fan coil units, revised selections. Revised Crac unit selections. Revised Crac unit remote condenser selections.
M0.8	Added details.
M0.9	Added details.
M0.10	Revised tempered make up air unit control diagram. Changed water source heat pump to 4-pipe fan coil control diagram. Revised air handling unit control diagrams.
M0.11	Revised control sequences.
M0.12	Revised control points.
M0.13	Revised heating water piping diagram.
M0.14	Added chilled water piping diagram.
M1.0	Removed fluid coolers
M1.1	Removed CRAC-2b, ductwork, and motorized dampers. Removed CRAC-3b, ductwork, and motorized dampers.
M1.2	CRAC-1b removed. Two elbows added to 32"x26" return air duct from ahu-9 to accommodate shifted Location of duct drop.
M1.3	Fluid coolers removed. Added air cooled chillers.

- M1.4 Dimensions of mau-2 & duct drop revised to match revised unit selection location of mau-2 & duct drop shifted slightly to avoid conflict with structural framing.  
Added additional hot water piping.
- M4.1 Chilled water system added. Condenser water system removed.
- M4.2 Chilled water system added. Condenser water system removed.
- M4.3 Fluid coolers removed. Air cooled chillers added.  
Chilled water system added. Condenser water system removed.
- M4.4 Chilled water system added. Condenser water system removed.
- M4.5 Chilled water system added. Condenser water system removed.
- M6.1 AHU & MAU dimensions revised to match revised unit selections  
AHU-8 moved 0'-8" to left to avoid supply duct drop conflict with structural framing  
AHU-9 moved 0'-6" to right to avoid supply duct drop conflict with structural framing  
AHU-10 moved 1'-4" to left to avoid return duct drop conflict with structural framing  
MAU-1 moved 0'-6" to left to avoid supply duct drop conflict with structural framing







