

SCHEDULE TCSH1									
TYPE	DESCRIPTION	LOAD	BREKBR	OUT	OT	BREKBR	LOAD	DESCRIPTION	TYPE
FC-1	BOH CORRIDOR LIGHTING	580	26	1	1	2	201	SPARE	
	BOH KITCHEN LIGHTING	580	26	1	1	4	201	SPARE	
	BOH RECEIVING LIGHTING	580	3	5	6	201	SPARE		
	BOH OFFICES	3050	25	7	8	201	SPARE		
KEEF-3	BOH OFFICES/SUPPORT RM LIGHTING	3050	9	9	12	201	SPARE		
	BOH OFFICES/SUPPORT RM LIGHTING	3050	3	11	12	201	SPARE		
	SPARE	1330	20	13	14	201	SPARE		
KEEF-4	SPARE	1330	15	16	201	SPARE			
	SPARE	1330	11	17	201	SPARE			
	SPARE	2110	20	19	20	201	SPARE		
KEEF-5	SPARE	2110	21	22	201	SPARE			
	SPARE	2110	25	24	201	SPARE			
	SPARE	2110	20	25	26	201	SPARE		
KEEF-6	SPARE	2110	27	28	201	SPARE			
	SPARE	2110	29	30	201	SPARE			
	SPARE	445	30	31	32	201	SPARE		
FC-8	SPARE	445	33	34	201	SPARE			
	SPARE	445	35	36	201	SPARE			
	SPARE	201	37	38	201	SPARE			
	SPARE	201	39	40	201	SPARE			
	SPARE	201	41	42	201	SPARE			
							TOTAL LOAD:	29 KVA	35 A

SCHEDULE TCHLT1									
TYPE	DESCRIPTION	LOAD	BREKBR	OUT	OT	BREKBR	LOAD	DESCRIPTION	TYPE
	BOH CORRIDOR LIGHTING	1260	201	1	2	201	2880	EXTERIOR COLUMN LIGHTING	
	BOH KITCHEN LIGHTING	1320	201	3	4	201	2880	EXTERIOR COLUMN LIGHTING	
	BOH RECEIVING LIGHTING	1250	201	5	6	201	2880	EXTERIOR COLUMN LIGHTING	
	BOH OFFICES	2220	201	7	8	201	2880	EXTERIOR COLUMN LIGHTING	
	BOH OFFICES/SUPPORT RM LIGHTING	2080	201	9	10	201	2880	EXTERIOR COLUMN LIGHTING	
	BOH OFFICES/SUPPORT RM LIGHTING	200	201	11	12	201	2880	EXTERIOR COLUMN LIGHTING	
	SPARE	201	13	14	201	2560	EXTERIOR COLUMN LIGHTING		
	SPARE	201	15	16	201	2560	EXTERIOR COLUMN LIGHTING		
	SPARE	201	17	18	201	2560	EXTERIOR COLUMN LIGHTING		
	SPARE	201	19	20	201	2560	EXTERIOR COLUMN LIGHTING		
	SPARE	201	21	22	201	2560	EXTERIOR COLUMN LIGHTING		
	SPARE	201	23	24	201	2560	EXTERIOR COLUMN LIGHTING		
	SPARE	201	25	26	201	3040	CANOPY LIGHTING		
	SPARE	201	27	28	201	3040	CANOPY LIGHTING		
	SPARE	201	29	30	201	1660	CANOPY LIGHTING		
	SPARE	201	31	32	201	SPARE			
	SPARE	201	33	34	201	SPARE			
	SPARE	201	35	36	201	SPARE			
	SPARE	201	37	38	201	SPARE			
	SPARE	201	39	40	201	SPARE			
	SPARE	201	41	42	201	SPARE			
							TOTAL LOAD:	50 KVA	60 A

SHEET NOTES
 RUN LIGHTING CIRCUIT THROUGH CORRESPONDING LIGHTING CONTRACTOR.

SCHEDULE TCCRM2									
TYPE	DESCRIPTION	LOAD	BREKBR	OUT	OT	BREKBR	LOAD	DESCRIPTION	TYPE
FC-5	EXTERIOR COLUMN LIGHTING	830	26	1	2	201	445	FC-11	
	EXTERIOR COLUMN LIGHTING	830	3	5	6	3	445		
FC-6	EXTERIOR COLUMN LIGHTING	445	7	8	8	201	SPARE		
	EXTERIOR COLUMN LIGHTING	445	9	10	11	201	SPARE		
	EXTERIOR COLUMN LIGHTING	445	3	11	12	201	SPARE		
FC-7	EXTERIOR COLUMN LIGHTING	580	20	13	14	201	SPARE		
	EXTERIOR COLUMN LIGHTING	580	15	16	201	SPARE			
	EXTERIOR COLUMN LIGHTING	580	3	15	18	201	SPARE		
	SPARE	201	19	20	201	SPARE			
	SPARE	201	21	22	201	SPARE			
	SPARE	201	23	24	201	SPARE			
	SPARE	201	25	26	201	SPARE			
	SPARE	201	27	28	201	SPARE			
	SPARE	201	29	30	201	SPARE			
	SPARE	201	31	32	201	SPARE			
	SPARE	201	33	34	201	SPARE			
	SPARE	201	35	36	201	SPARE			
	SPARE	201	37	38	201	SPARE			
	SPARE	201	39	40	201	SPARE			
	SPARE	201	41	42	201	SPARE			
							TOTAL LOAD:	7 KVA	8 A

SCHEDULE TCHLT2									
TYPE	DESCRIPTION	LOAD	BREKBR	OUT	OT	BREKBR	LOAD	DESCRIPTION	TYPE
	EXTERIOR COLUMN LIGHTING	2880	201	1	2	201	2110	KEEF-1	
	EXTERIOR COLUMN LIGHTING	2880	201	3	4	201	2110		
	EXTERIOR COLUMN LIGHTING	2560	201	5	6	3	2110		
	EXTERIOR COLUMN LIGHTING	2880	201	7	8	201	2110		
	EXTERIOR COLUMN LIGHTING	2240	201	9	10	201	2110	KEEF-2	
	EXTERIOR COLUMN LIGHTING	2560	201	11	12	3	2110		
	EXTERIOR COLUMN LIGHTING	2880	201	13	14	201	585		
	EXTERIOR COLUMN LIGHTING	1920	201	3	4	585	FC-12		
	BANQUET FOOD PREP LIGHTING	1820	201	17	18	3	585		
	CORRIDOR / SUPPORT ROOMS LIGHTING	820	201	19	20	100	21380		
E01	COLLECTOR	440	20	21	22	201	21380	DISHWASHER	
	POWERED SINK	2330	20	27	28	201	6000	DISHWASHER BOOSTER HEATER	
	POWERED SINK	2330	20	29	30	201	6000	DISHWASHER BOOSTER HEATER	
	POWERED SINK	2330	31	32	201	8100			
E50	COLLECTOR	440	20	33	34	201	8100	DISHWASHER	
	CANOPY LIGHTING	1660	201	39	40	201	7330	DISHWASHER BOOSTER HEATER	
	SPARE	201	41	42	201	7330			
							TOTAL LOAD:	178 KVA	214 A

SCHEDULE TCCRM									
TYPE	DESCRIPTION	LOAD	BREKBR	OUT	OT	BREKBR	LOAD	DESCRIPTION	TYPE
	BOH CORRIDOR LGT	15820	80	1	2	201	1750		
	BOH KITCHEN LGT	15820	3	4	4	201	1750	CCU-1	
	BOH RECEIVING LGT	15820	3	5	6	201	3950		
	BOH OFFICES/SUPPORT RM LGT	3050	7	8	201	3950			
	BOH OFFICES/SUPPORT RM LGT	3050	9	10	201	3950	CCU-2A		
	BOH OFFICES/SUPPORT RM LGT	3050	11	12	201	3950			
	BOH OFFICES/SUPPORT RM LGT	3050	13	14	201	2690			
	BOH OFFICES/SUPPORT RM LGT	3050	15	16	201	2690	CCU-2B		
	BOH OFFICES/SUPPORT RM LGT	3050	17	18	201	2690			
	BOH OFFICES/SUPPORT RM LGT	3050	19	20	201	3950			
	BOH OFFICES/SUPPORT RM LGT	3050	21	22	201	3950	CCU-3		
	BOH OFFICES/SUPPORT RM LGT	3050	23	24	201	3950			
	BOH OFFICES/SUPPORT RM LGT	3050	25	26	201	3950			
	BOH OFFICES/SUPPORT RM LGT	3050	27	28	201	3950			
	BOH OFFICES/SUPPORT RM LGT	3050	29	30	201	3950			
	BOH OFFICES/SUPPORT RM LGT	3050	31	32	201	3950			
	BOH OFFICES/SUPPORT RM LGT	3050	33	34	201	3950			
	BOH OFFICES/SUPPORT RM LGT	3050	35	36	201	3950			
	BOH OFFICES/SUPPORT RM LGT	3050	37	38	201	3950			
	BOH OFFICES/SUPPORT RM LGT	3050	39	40	201	3950			
	BOH OFFICES/SUPPORT RM LGT	3050	41	42	201	3950			
							TOTAL LOAD:	120 KVA	144 A

SCHEDULE TCSSL									
TYPE	DESCRIPTION	LOAD	BREKBR	OUT	OT	BREKBR	LOAD	DESCRIPTION	TYPE
	SITE LIGHTING	2640	20	1	2	201	2640	SITE LIGHTING	
	SITE LIGHTING	2640	3	4	201	2640			
	SITE LIGHTING	3300	5	6	201	3300	SITE LIGHTING		
	SITE LIGHTING	3300	7	8	201	3300			
	SITE LIGHTING	2970	9	10	201	2970	SITE LIGHTING		
	SITE LIGHTING	2970	11	12	201	2970			
	SITE LIGHTING	3300	13	14	201	2640	SITE LIGHTING		
	SITE LIGHTING	3300	15	16	201	2640			
	SITE LIGHTING	2640	17	18	201	2310	SITE LIGHTING		
	SITE LIGHTING	2640	19	20	201	2310			
	SITE LIGHTING	2640	21	22	201	SPARE			
	SITE LIGHTING	2640	23	24	201	SPARE			
	SITE LIGHTING	2640	25	26	201	SPARE			
	SITE LIGHTING	2640	27	28	201	SPARE			
	SITE LIGHTING	2640	29	30	201	SPARE			
	SITE LIGHTING	2640	31	32	201	SPARE			
	SITE LIGHTING	2640	33	34	201	SPARE			
	SITE LIGHTING	2640	35	36	201	SPARE			
	SITE LIGHTING	2640	37	38	201	SPARE			
	SITE LIGHTING	2640	39	40	201	SPARE			
	SITE LIGHTING	2640	41	42	201	SPARE			
							TOTAL LOAD:	63 KVA	75 A

SCHEDULE TCHLT3									
TYPE	DESCRIPTION	LOAD	BREKBR	OUT	OT	BREKBR	LOAD	DESCRIPTION	TYPE
E53	DISHWASHER	7100	20	1	2	201	830	FC-2	
	DISHWASHER	7100	3	4	201	830			
	DISHWASHER	7100	5	6	201	830			
	DISHWASHER BOOSTER HEATER	7330	7	8	201	580			
E53	DISHWASHER BOOSTER HEATER	7330	9	10	201	580	FC-3		
	DISHWASHER BOOSTER HEATER	7330	11	12	201	580			
	DISHWASHER BOOSTER HEATER	7330	13	14	201	830			
E49	POWERED SINK	2330	20	15	16	201	830	FC-4	
	POWERED SINK	2330	3	17	18	201	830		
E50	COLLECTOR	415	20	19	20	201	840	EFF-1	
	COLLECTOR	415	21	22	201	840			
	COLLECTOR	415	23	24	201	840			
	COLLECTOR	7100	25	26	201	415			
E53	DISHWASHER	7100	27	28	201	415	COLLECTOR	E50	
	DISHWASHER	7100	29	30	201	415			



PANEL SCHEDULE 1										
TYPE	DESCRIPTION	LOAD	BREKBR	OUT	OT	BREKBR	LOAD	DESCRIPTION	TYPE	
MENS RESTROOM RECEPTACLES	1400	2011	1	2	2011	400	CONVENIENCE RECEPTACLES			
MENS RESTROOM RECEPTACLES	1400	2011	3	4	2011	600	IDP OFFICE RECEPTACLES			
MENS RESTROOM RECEPTACLES	1400	2011	5	6	2011	400	MARKETING RECEPTACLES			
HAND DRYER	1400	2011	7	8	2011	600	MARKETING RECEPTACLES			
HAND DRYER	1400	2011	9	10	2011	400	MARKETING RECEPTACLES			
WOMENS RESTROOM RECEPTACLES	1400	2011	11	12	2011	1000	MARKETING RECEPTACLES			
WOMENS RESTROOM RECEPTACLES	1400	2011	13	14	2011	800	CONVENIENCE RECEPTACLES			
WOMENS RESTROOM RECEPTACLES	1400	2011	15	16	2011	600	CONVENIENCE RECEPTACLES			
HAND DRYER	1400	2011	17	18	2011	800	TOILET RECEPTACLES			
HAND DRYER	1400	2011	19	20	2011	800	TOILET RECEPTACLES			
UTILITY RECEPTACLES	400	2011	21	22	2011		SPARE			
UTILITY RECEPTACLES	400	2011	23	24	2011		SPARE			
EVS UTILITY RECEPTACLES	600	2011	25	26	2011	400	UTILITY RECEPTACLES			
VESTIBULE RECEPTACLES	600	2011	27	28	2011	600	CONNECTION VESTIBULE RECEPTACLES			
VESTIBULE RECEPTACLES	600	2011	29	30	2011	600	CONNECTION VESTIBULE RECEPTACLES			
VESTIBULE DOORS	800	2011	31	32	2011	400	CONNECTION VESTIBULE DOOR			
REVOLVING DOOR LIGHTS	600	2011	33	34	2011	400	CONVENIENCE RECEPTACLES			
REVOLVING DOOR POWER	1000	2011	35	36	2011	500	WH-1			
SPARE	1000	2011	37	38	2011	500	WH-2			
SPARE	1000	2011	39	40	2011	500	WH-2			
SPARE	400	2011	41	42	2011	100	CP-1			

VOLTS: 208 (207) 3Ø, 4L, 3W
 APPS: 0 100A 250A 400A
 NBR: 0 N2 0 N3 0 N4
 USE: 0 DR LINES 0 FIB-TRU
 MTD: 0 SURFACE 0 FLUSH
 BSS: 0 COPPER 0 ALUMINUM
 DOOR: 0 DOOR IN DOOR 0 STANDARD

PANEL TOTA (LOAD): 30 kW (84 A)
 PANEL TOTA (LOAD): 24 kW (66 A)
 TOTAL LOAD: 54 kW (150 A)

NEUTRAL BUS: 100% 200%
 GROUND BUS: STANDARD ISOLATED
 AC RATING: 1Ø 1Ø 1Ø 2Ø 3Ø

TCL3

PANEL SCHEDULE 1										
TYPE	DESCRIPTION	LOAD	BREKBR	OUT	OT	BREKBR	LOAD	DESCRIPTION	TYPE	
VAV BOILES	300	2011	1	2	2011	1000	PROJECTOR SCREEN			
VAV BOILES	400	2011	3	4	2011	1000	PROJECTOR SCREEN			
VAV BOILES	300	2011	5	6	2011	1000	PROJECTOR SCREEN			
EF-4	1200	2011	7	8	2011	1000	PROJECTOR SCREEN			
EF-4	1200	2011	9	10	2011	1000	PROJECTOR SCREEN			
ROOFTOP RECEPTACLES	1000	2011	11	12	2011	1000	PROJECTOR SCREEN			
ROOFTOP RECEPTACLES	1000	2011	13	14	2011	1200	PROJECTOR AND LIFT			
CONTACTOR COIL	100	2011	15	16	2011	1200	PROJECTOR AND LIFT			
PROJECTOR SCREEN	1000	2011	17	18	2011	1000	PROJECTOR SCREEN			
PROJECTOR SCREEN	1000	2011	19	20	2011	1000	PROJECTOR SCREEN			
PROJECTOR AND LIFT	1200	2011	21	22	2011	1000	PROJECTOR SCREEN			
PROJECTOR AND LIFT	1200	2011	23	24	2011	1000	PROJECTOR AND LIFT			
PROJECTOR AND LIFT	1200	2011	25	26	2011	1200	PROJECTOR AND LIFT			
PROJECTOR AND LIFT	1200	2011	27	28	2011	1200	PROJECTOR AND LIFT			
PROJECTOR AND LIFT	1200	2011	29	30	2011	1200	PROJECTOR AND LIFT			
PROJECTOR AND LIFT	1200	2011	31	32	2011	1200	PROJECTOR AND LIFT			
PROJECTOR AND LIFT	1200	2011	33	34	2011	600	DIGITAL DISPLAY			
SPARE	2011	35	36	2011	400	DIGITAL DISPLAY				
SPARE	2011	37	38	2011	300	VAV BOILES				
SPARE	2011	39	40	2011	300	VAV BOILES				
SPARE	2011	41	42	2011		SPARE				

VOLTS: 208 (207) 3Ø, 4L, 3W
 APPS: 0 100A 250A 400A
 NBR: 0 N2 0 N3 0 N4
 USE: 0 DR LINES 0 FIB-TRU
 MTD: 0 SURFACE 0 FLUSH
 BSS: 0 COPPER 0 ALUMINUM
 DOOR: 0 DOOR IN DOOR 0 STANDARD

PANEL TOTA (LOAD): 35 kW (96 A)

NEUTRAL BUS: 100% 200%
 GROUND BUS: STANDARD ISOLATED
 AC RATING: 1Ø 1Ø 1Ø 2Ø 3Ø

TCCCL3

PANEL SCHEDULE 1										
TYPE	DESCRIPTION	LOAD	BREKBR	OUT	OT	BREKBR	LOAD	DESCRIPTION	TYPE	
MENS RESTROOM RECEPTACLES	800	2011	1	2	2011	600	CONVENIENCE RECEPTACLES			
MENS RESTROOM RECEPTACLES	800	2011	3	4	2011	600	OFFICE RECEPTACLES			
SPARE	2011	5	6	2011	1000	OFFICE RECEPTACLES				
WOMENS RESTROOM RECEPTACLES	800	2011	7	8	2011	600	GREEN ROOM RECEPTACLES			
WOMENS RESTROOM RECEPTACLES	800	2011	9	10	2011	600	GREEN ROOM RECEPTACLES			
SPARE	2011	11	12	2011	600	GREEN ROOM RECEPTACLES				
UTILITY RECEPTACLES	400	2011	13	14	2011	400	GREEN ROOM RECEPTACLES			
EDR RECEPTACLES	400	2011	15	16	2011	400	GREEN ROOM RECEPTACLES			
EDR RECEPTACLES	400	2011	17	18	2011	400	STAGE LIFT			
EDR RECEPTACLES	500	2011	19	20	2011	400	AUDIT RECEPTACLES			
EDR RECEPTACLES	1000	2011	21	22	2011	400	AUDIT RECEPTACLES			
CONVENIENCE RECEPTACLES	600	2011	23	24	2011	400	AUDIT RECEPTACLES			
SPARE	2011	25	26	2011	400	AUDIT RECEPTACLES				
OFFICE RECEPTACLES	600	2011	27	28	2011	400	AUDIT RECEPTACLES			
OFFICE RECEPTACLES	1000	2011	29	30	2011	400	AUDIT RECEPTACLES			
VAV BOILES	800	2011	31	32	2011	400	AUDIT RECEPTACLES			
VAV BOILES	700	2011	33	34	2011	400	AUDIT RECEPTACLES			
VAV BOILES	300	2011	35	36	2011	600	CHRG COMBISON OFFICE RECEPTACLES			
EF-6	1200	2011	37	38	2011		SPARE			
ROOFTOP RECEPTACLES	800	2011	39	40	2011		SPARE			
SPARE	2011	41	42	2011			SPARE			

VOLTS: 208 (207) 3Ø, 4L, 3W
 APPS: 0 100A 250A 400A
 NBR: 0 N2 0 N3 0 N4
 USE: 0 DR LINES 0 FIB-TRU
 MTD: 0 SURFACE 0 FLUSH
 BSS: 0 COPPER 0 ALUMINUM
 DOOR: 0 DOOR IN DOOR 0 STANDARD

PANEL TOTA (LOAD): 21 kW (57 A)

NEUTRAL BUS: 100% 200%
 GROUND BUS: STANDARD ISOLATED
 AC RATING: 1Ø 1Ø 1Ø 2Ø 3Ø

TCL4

PANEL SCHEDULE 1										
TYPE	DESCRIPTION	LOAD	BREKBR	OUT	OT	BREKBR	LOAD	DESCRIPTION	TYPE	
HUMAN RESOURCES RECEPTACLES	400	2011	1	2	2011	400	UTILITY RECEPTACLES			
HUMAN RESOURCES RECEPTACLES	400	2011	3	4	2011	1180	DOOR 1			
HUMAN RESOURCES RECEPTACLES	400	2011	5	6	2011	1180	DOOR 2			
HUMAN RESOURCES RECEPTACLES	400	2011	7	8	2011	600	UTILITY RECEPTACLES			
HUMAN RESOURCES RECEPTACLES	400	2011	9	10	2011	400	UTILITY RECEPTACLES			
HUMAN RESOURCES RECEPTACLES	600	2011	11	12	2011	400	RECEIVING RECEPTACLES			
HUMAN RESOURCES RECEPTACLES	400	2011	13	14	2011	400	RECEIVING RECEPTACLES			
HUMAN RESOURCES RECEPTACLES	600	2011	15	16	2011	1650	FORKLIFT CHARGER RECEPTACLE			
HUMAN RESOURCES RECEPTACLES	600	2011	17	18	2011	2 1650				
HUMAN RESOURCES RECEPTACLES	600	2011	19	20	2011	1650	PALLET JACK CHARGER RECEPTACLE			
KEY RECEPTACLES	600	2011	21	22	2011	2 1650				
KEY RECEPTACLES	600	2011	23	24	2011	200	RECEIVING RECEPTACLE			
SLOT MAINTENANCE RECEPTACLES	600	2011	25	26	2011	200	RECEIVING RECEPTACLE			
SLOT MAINTENANCE RECEPTACLES	600	2011	27	28	2011	400	TRASH RECEPTACLE			
SLOT MAINTENANCE RECEPTACLES	600	2011	29	30	2011	400	MOF ROOM RECEPTACLES			
SLOT MAINTENANCE RECEPTACLES	600	2011	31	32	2011	400	TIME CLOCK RECEPTACLE			
CONTACTOR COIL	100	2011	33	34	2011	400	SECURITY STORAGE RECEPTACLE			
STAGE PROJECTOR SCREEN	1500	2011	35	36	2011	1000	KEY ROOM PRINTER RECEPTACLE			
SPARE	2011	37	38	2011			SPARE			
SPARE	2011	39	40	2011			SPARE			
SPARE	2011	41	42	2011			SPARE			

VOLTS: 208 (207) 3Ø, 4L, 3W
 APPS: 0 100A 250A 400A
 NBR: 0 N2 0 N3 0 N4
 USE: 0 DR LINES 0 FIB-TRU
 MTD: 0 SURFACE 0 FLUSH
 BSS: 0 COPPER 0 ALUMINUM
 DOOR: 0 DOOR IN DOOR 0 STANDARD

PANEL TOTA (LOAD): 24 kW (67 A)
 PANEL TOTA (LOAD): 21 kW (57 A)
 TOTAL LOAD: 45 kW (125 A)

NEUTRAL BUS: 100% 200%
 GROUND BUS: STANDARD ISOLATED
 AC RATING: 1Ø 1Ø 1Ø 2Ø 3Ø

TCL1

PANEL SCHEDULE 1										
TYPE	DESCRIPTION	LOAD	BREKBR	OUT	OT	BREKBR	LOAD	DESCRIPTION	TYPE	
CONFERENCE CENTER RECEPTACLES	400	2011	1	2	2011	400	CONFERENCE CENTER RECEPTACLES			
CONFERENCE CENTER RECEPTACLES	1200	2011	3	4	2011	400	CONFERENCE CENTER RECEPTACLES			
CONFERENCE CENTER RECEPTACLES	400	2011	5	6	2011	400	CONFERENCE CENTER RECEPTACLES			
CONFERENCE CENTER RECEPTACLES	1200	2011	7	8	2011	400	CONFERENCE CENTER RECEPTACLES			
CONFERENCE CENTER RECEPTACLES	400	2011	9	10	2011	400	CONFERENCE CENTER RECEPTACLES			
CONFERENCE CENTER RECEPTACLES	1200	2011	11	12	2011	400	CONFERENCE CENTER RECEPTACLES			
CONFERENCE CENTER RECEPTACLES	400	2011	13	14	2011	400	CONFERENCE CENTER RECEPTACLES			
CONFERENCE CENTER RECEPTACLES	1200	2011	15	16	2011	400	CONFERENCE CENTER RECEPTACLES			
CONFERENCE CENTER RECEPTACLES	400	2011	17	18	2011	400	CONFERENCE CENTER RECEPTACLES			
CONFERENCE CENTER RECEPTACLES	1200	2011	19	20	2011	400	CONFERENCE CENTER RECEPTACLES			
CONFERENCE CENTER RECEPTACLES	400	2011	21	22	2011	400	CONFERENCE CENTER RECEPTACLES			
CONFERENCE CENTER RECEPTACLES	1200	2011	23	24	2011	400	CONFERENCE CENTER RECEPTACLES			
CONFERENCE CENTER RECEPTACLES	400	2011	25	26	2011	400	CONFERENCE CENTER RECEPTACLES			
CONFERENCE CENTER RECEPTACLES	1200	2011	27	28	2011	400	CONFERENCE CENTER RECEPTACLES			
CONFERENCE CENTER RECEPTACLES	400	2011	29	30	2011	400	CONFERENCE CENTER RECEPTACLES			
CONFERENCE CENTER RECEPTACLES	1200	2011	31	32	2011	400	CONFERENCE CENTER RECEPTACLES			
CONFERENCE CENTER RECEPTACLES	400	2011	33	34	2011	400	CONFERENCE CENTER RECEPTACLES			
CONFERENCE CENTER RECEPTACLES	400	2011	35	36	2011	400	CONFERENCE CENTER RECEPTACLES			
IDF ROOM RECEPTACLES	400	2011	37	38	2011		SPARE			
SPARE	2011	39	40	2011			SPARE			
SPARE	2011	41	42	2011			SPARE			

VOLTS: 208 (207) 3Ø, 4L, 3W
 APPS: 0 100A 250A 400A
 NBR: 0 N2 0 N3 0 N4
 USE: 0 DR LINES 0 FIB-TRU
 MTD: 0 SURFACE 0 FLUSH
 BSS: 0 COPPER 0 ALUMINUM
 DOOR: 0 DOOR IN DOOR 0 STANDARD

PANEL TOTA (LOAD): 21 kW (59 A)

NEUTRAL BUS: 100% 200%
 GROUND BUS: STANDARD ISOLATED
 AC RATING: 1Ø 1Ø 1Ø 2Ø 3Ø

TCCCL1

PANEL SCHEDULE 1										
TYPE	DESCRIPTION	LOAD	BREKBR	OUT	OT	BREKBR	LOAD	DESCRIPTION	TYPE	
VIP EVENT RECEPTACLES	400	2011	1	2	2011	400	IDP ROOM RECEPTACLES			
VIP EVENT RECEPTACLES	400	2011	3	4	2011	500	STAGE VIDEO WALL			
VIP EVENT RECEPTACLES	1000	2011	5	6	2011	500	STAGE VIDEO WALL			
VIP EVENT RECEPTACLES	600	2011	7	8	2011	500	STAGE VIDEO WALL			
DINING RECEPTACLES	600	2011	9	10	2011	500	STAGE VIDEO WALL			
DINING RECEPTACLES	600	2011	11	12	2011	500	STAGE VIDEO WALL			
DINING RECEPTACLES	400	2011	13	14	2011	500	STAGE VIDEO WALL			
DINING RECEPTACLES	400	2011	15	16	2011	500	STAGE VIDEO WALL			
DINING RECEPTACLES	400	2011	17	18	2011	500	STAGE VIDEO WALL			
DINING RECEPTACLES	800	2011	19	20	2011	900	DIGITAL DISPLAY			



James R. Childers
Architect, Inc.
45 South 4th Street
Fort Smith, AR 72201
479-783-3468
www.childersarchitect.com



CONSULTANT LOGO



370 E Windward Lane, Suite 100
Las Vegas, NV 89123
702.696.1100
msa-ar.com

MSA#18041



CHEROKEE NATION ENTERTAINMENT
TAHLEQUAH CASINO

TALLEQUAH, OKLAHOMA

BID PACKAGE 05

REVISIONS

NO.	DATE	DESCRIPTION
1		
2		
3		
4		
5		

DATE: 05/03/18 JOB NUMBER: 17-06

REVISED BY: E0.22

PANEL SCHEDULES

TYPE	DESCRIPTION	LOAD	BREAKER	OUT	IN	OUT	BREAKER	LOAD	DESCRIPTION	TYPE
SLOT POWER		900	201/1	1	2	201/1	1200		SLOT POWER	
SLOT POWER		900	201/3	4	4	201/1	900		SLOT POWER	
SLOT POWER		1200	201/5	6	6	201/1	1200		SLOT POWER	
SLOT POWER		1200	201/7	8	8	201/1	900		SLOT POWER	
SLOT POWER		1200	201/9	10	10	201/1	900		SLOT POWER	
SLOT POWER		900	201/11	12	12	201/1	1200		SLOT POWER	
SLOT POWER		900	201/13	14	14	201/1	900		SLOT POWER	
SLOT POWER		900	201/15	16	16	201/1	900		SLOT POWER	
SLOT POWER		900	201/17	18	18	201/1	900		SLOT POWER	
SLOT POWER		900	201/19	20	20	201/1	900		SLOT POWER	
SLOT POWER		600	201/21	22	22	201/1	1200		SLOT POWER	
SLOT POWER		900	201/23	24	24	201/1	1200		SLOT POWER	
SLOT POWER		900	201/25	26	26	201/1	900		SLOT POWER	
SLOT POWER		1200	201/27	28	28	201/1			SPARE	
SLOT POWER		900	201/29	30	30	201/1			SPARE	
SPARE			201/31	32	32	201/1			SPARE	
SPARE			201/33	34	34	201/1			SPARE	
SPARE			201/35	36	36	201/1			SPARE	
SPARE			201/37	38	38	201/1			SPARE	
SPARE			201/39	40	40	201/1			SPARE	
SPARE			201/41	42	42	201/1			SPARE	
TOTAL LOAD: 28 KVA / 77 A										

VOLTS: 3Ø 120V/3Ø 4W
 APPS: 1ØA 1ØB 2ØA 2ØB 4ØA
 NGR: 1ØB 1ØC 1ØD
 USES: 1ØB 1ØC 1ØD
 MTD: SURFACE FLUSH
 BUSS: COPPER ALUMINUM
 DOOR: DOOR IN DOOR STANDARD

NEUTRAL BUS: 100% 200%
 GROUND BUS: STANDARD ISOLATED
 AC RATING: 1Ø 1Ø 1Ø 1Ø 2Ø 2Ø

TCS P5

TYPE	DESCRIPTION	LOAD	BREAKER	OUT	IN	OUT	BREAKER	LOAD	DESCRIPTION	TYPE
SLOT POWER		900	201/1	1	2	201/1	900		SLOT POWER	
SLOT POWER		900	201/3	4	4	201/1	900		SLOT POWER	
SLOT POWER		900	201/5	6	6	201/1	600		SLOT POWER	
SLOT POWER		900	201/7	8	8	201/1	600		SLOT POWER	
SLOT POWER		1200	201/9	10	10	201/1	900		SLOT POWER	
SLOT POWER		900	201/11	12	12	201/1	900		SLOT POWER	
SLOT POWER		900	201/13	14	14	201/1	900		SLOT POWER	
SLOT POWER		900	201/15	16	16	201/1	900		SLOT POWER	
SLOT POWER		900	201/17	18	18	201/1	900		SLOT POWER	
SLOT POWER		1200	201/19	20	20	201/1	900		SLOT POWER	
SLOT POWER		900	201/21	22	22	201/1	900		SLOT POWER	
SLOT POWER		1200	201/23	24	24	201/1	600		SLOT POWER	
SLOT POWER		1200	201/25	26	26	201/1	900		SLOT POWER	
SLOT POWER		1200	201/27	28	28	201/1	900		SLOT POWER	
SLOT POWER		900	201/29	30	30	201/1	900		SLOT POWER	
SLOT POWER		900	201/31	32	32	201/1	900		SLOT POWER	
SLOT POWER		1200	201/33	34	34	201/1			SPARE	
SLOT POWER		900	201/35	36	36	201/1			SPARE	
SPARE			201/37	38	38	201/1			SPARE	
SPARE			201/39	40	40	201/1			SPARE	
SPARE			201/41	42	42	201/1			SPARE	
TOTAL LOAD: 31 KVA / 87 A										

VOLTS: 3Ø 120V/3Ø 4W
 APPS: 1ØA 1ØB 2ØA 2ØB 4ØA
 NGR: 1ØB 1ØC 1ØD
 USES: 1ØB 1ØC 1ØD
 MTD: SURFACE FLUSH
 BUSS: COPPER ALUMINUM
 DOOR: DOOR IN DOOR STANDARD

NEUTRAL BUS: 100% 200%
 GROUND BUS: STANDARD ISOLATED
 AC RATING: 1Ø 1Ø 1Ø 1Ø 2Ø 2Ø

TCS P2

TYPE	DESCRIPTION	LOAD	BREAKER	OUT	IN	OUT	BREAKER	LOAD	DESCRIPTION	TYPE
			201/1	1	2	201/1				
			201/3	4	4	201/1				
			201/5	6	6	201/1				
			201/7	8	8	201/1				
			201/9	10	10	201/1				
			201/11	12	12	201/1				
			201/13	14	14	201/1				
			201/15	16	16	201/1				
			201/17	18	18	201/1				
			201/19	20	20	201/1				
			201/21	22	22	201/1				
			201/23	24	24	201/1				
			201/25	26	26	201/1				
			201/27	28	28	201/1				
			201/29	30	30	201/1				
			201/31	32	32	201/1				
			201/33	34	34	201/1				
			201/35	36	36	201/1				
			201/37	38	38	201/1				
			201/39	40	40	201/1				
			201/41	42	42	201/1				
TOTAL LOAD: 0 KVA / # # A										

VOLTS: 3Ø 120V/3Ø 4W
 APPS: 1ØA 1ØB 2ØA 2ØB 4ØA
 NGR: 1ØB 1ØC 1ØD
 USES: 1ØB 1ØC 1ØD
 MTD: SURFACE FLUSH
 BUSS: COPPER ALUMINUM
 DOOR: DOOR IN DOOR STANDARD

NEUTRAL BUS: 100% 200%
 GROUND BUS: STANDARD ISOLATED
 AC RATING: 1Ø 1Ø 1Ø 1Ø 2Ø 2Ø

TYPE	DESCRIPTION	LOAD	BREAKER	OUT	IN	OUT	BREAKER	LOAD	DESCRIPTION	TYPE
SLOT POWER		900	201/1	1	2	201/1	600		SLOT POWER	
SLOT POWER		900	201/3	4	4	201/1	600		SLOT POWER	
SLOT POWER		900	201/5	6	6	201/1	900		SLOT POWER	
SLOT POWER		900	201/7	8	8	201/1	900		SLOT POWER	
SLOT POWER		900	201/9	10	10	201/1	900		SLOT POWER	
SLOT POWER		900	201/11	12	12	201/1	900		SLOT POWER	
SLOT POWER		1200	201/13	14	14	201/1	900		SLOT POWER	
SLOT POWER		1200	201/15	16	16	201/1	900		SLOT POWER	
SLOT POWER		1200	201/17	18	18	201/1	900		SLOT POWER	
SLOT POWER		900	201/19	20	20	201/1	900		SLOT POWER	
SLOT POWER		900	201/21	22	22	201/1	900		SLOT POWER	
SLOT POWER		600	201/23	24	24	201/1	900		SLOT POWER	
ATM POWER		1200	201/25	26	26	201/1	900		SLOT POWER	
SLOT POWER		900	201/27	28	28	201/1	900		SLOT POWER	
SLOT POWER		900	201/29	30	30	201/1	900		SLOT POWER	
SLOT POWER		900	201/31	32	32	201/1	900		SLOT POWER	
SLOT POWER		900	201/33	34	34	201/1	1200		SLOT POWER	
SPARE			201/35	36	36	201/1			SPARE	
SPARE			201/37	38	38	201/1			SPARE	
SPARE			201/39	40	40	201/1			SPARE	
SPARE			201/41	42	42	201/1			SPARE	
TOTAL LOAD: 31 KVA / 87 A										

VOLTS: 3Ø 120V/3Ø 4W
 APPS: 1ØA 1ØB 2ØA 2ØB 4ØA
 NGR: 1ØB 1ØC 1ØD
 USES: 1ØB 1ØC 1ØD
 MTD: SURFACE FLUSH
 BUSS: COPPER ALUMINUM
 DOOR: DOOR IN DOOR STANDARD

NEUTRAL BUS: 100% 200%
 GROUND BUS: STANDARD ISOLATED
 AC RATING: 1Ø 1Ø 1Ø 1Ø 2Ø 2Ø

TCS P3

TYPE	DESCRIPTION	LOAD	BREAKER	OUT	IN	OUT	BREAKER	LOAD	DESCRIPTION	TYPE
SPARE			201/1	1	2	201/1			SPARE	
SPARE			201/3	4	4	201/1			SPARE	
SPARE			201/5	6	6	201/1	1020		BON KITCHEN RESTROOM LTG	
SPARE			201/7	8	8	201/1			SPARE	
SPARE			201/9	10	10	201/1			SPARE	
SPARE			201/11	12	12	201/1			SPARE	
SPARE			201/13	14	14	201/1			SPARE	
SPARE			201/15	16	16	201/1			SPARE	
SPARE			201/17	18	18	201/1			SPARE	
SPARE			201/19	20	20	201/1			SPARE	
SPARE			201/21	22	22	201/1			SPARE	
SPARE			201/23	24	24	201/1			SPARE	
SPARE			201/25	26	26	201/1			SPARE	
SPARE			201/27	28	28	201/1			SPARE	
SPARE			201/29	30	30	201/1			SPARE	
SPARE			201/31	32	32	201/1			SPARE	
SPARE			201/33	34	34	201/1			SPARE	
SPARE			201/35	36	36	201/1			SPARE	
SPARE			201/37	38	38	201/1			SPARE	
SPARE			201/39	40	40	201/1			SPARE	
SPARE			201/41	42	42	201/1			SPARE	
TOTAL LOAD: 1 KVA / 3 A										

VOLTS: 3Ø 120V/3Ø 4W
 APPS: 1ØA 1ØB 2ØA 2ØB 4ØA
 NGR: 1ØB 1ØC 1ØD
 USES: 1ØB 1ØC 1ØD
 MTD: SURFACE FLUSH
 BUSS: COPPER ALUMINUM
 DOOR: DOOR IN DOOR STANDARD

NEUTRAL BUS: 100% 200%
 GROUND BUS: STANDARD ISOLATED
 AC RATING: 1Ø 1Ø 1Ø 1Ø 2Ø 2Ø

TCS P1

TYPE	DESCRIPTION	LOAD	BREAKER	OUT	IN	OUT	BREAKER	LOAD	DESCRIPTION	TYPE
			201/1	1	2	201/1				
			201/3	4	4	201/1				
			201/5	6	6	201/1				
			201/7	8	8	201/1				
			201/9	10	10	201/1				
			201/11	12	12	201/1				
			201/13	14	14	201/1				
			201/15	16	16	201/1				
			201/17	18	18	201/1				
			201/19	20	20	201/1				
			201/21	22	22	201/1				
			201/23	24	24	201/1				
			201/25	26	26	201/1				
			201/27	28	28	201/1				
			201/29	30	30	201/1				
			201/31	32	32	201/1				
			201/33	34	34	201/1				
			201/35	36	36	201/1				
			201/37	38	38	201/1				
			201/39	40	40	201/1				
			201/41	42	42	201/1				
TOTAL LOAD: 0 KVA / # # A										

VOLTS: 3Ø



DIMMER 'TCDRN' SCHEDULE						RACK 48 MODULES
INCOMING LINE		MAINS RATING		LOAD		
120/208V, 3ø,4W		A		5 KVA		
DIMMER NUMBER	WATTAGE RATING	LOAD	LOAD LOCATION	LOAD DESCRIPTION	CONTROL CHANNEL	
E1	2400	270	MENS 24 COWMENS 22	FIGURE 'L14'		
E2	2400	540	MENS 11 COWMENS 13	FIGURE 'L14'		
E3	2400	100	MENS 24 COWMENS 22	FIGURE 'L17'	NON-DIM	
E4	2400	500	MENS 11 COWMENS 22	FIGURE 'L17'	NON-DIM	
E5	2400	1100	GAMING	FIGURE 'L16'	0-10V	
E6	2400	1170	GAMING	FIGURE 'L16'	0-10V	
E7	2400	600	ENTRY	FIGURE 'LF-03'	TBD	
E8	2400		SPARE		TBD	
E9	2400	110	PLAYERS CLUB	FIGURE 'L14'		
E10	2400	160	CASHIER	FIGURE 'L14'		
E11	2400	1250	LOUNGE	FIGURE 'L16'	0-10V	
E12	2400	320	BAR	FIGURE 'L16'	0-10V	
E13	2400	390	VIP EVENT	FIGURE 'L16'	0-10V	
E14	2400		SPARE			
E15	2400	110	STEAKHOUSE WAITING	FIGURE 'L15'		
E16	2400	90	STEAKHOUSE HOUSE R.R.	FIGURE 'L15'		
E17	2400	90	STEAKHOUSE HOUSE DINING	FIGURE 'L15'		
E18	2400	530	STEAKHOUSE	FIGURE 'L15'		
E19	2400	70	STEAKHOUSE BAR	FIGURE 'L15'		
E20	2400	90	STEAKHOUSE PRIVATE DINING	FIGURE 'L15'		
E21	2400		SPARE			
E22	2400		SPARE			
E23	2400		SPARE			
E24	2400		SPARE			
E25	2400		SPARE			
E26	2400		SPARE			
E27	2400		SPARE			
E28	2400		SPARE			
E29	2400		SPARE			
E30	2400		SPARE			
E31	2400		SPARE			
E32	2400		SPARE			
E33	2400		SPARE			
E34	2400		SPARE			
E35	2400		SPARE			
E36	2400		SPARE			
E37	2400		SPARE			
E38	2400		SPARE			
E39	2400		SPARE			
E40	2400		SPARE			
E41	2400		SPARE			
E42	2400		SPARE			
E43	2400		SPARE			
E44	2400		SPARE			
E45	2400		SPARE			
E46	2400		SPARE			
E47	2400		SPARE			
E48	2400		SPARE			

DIMMER 'TCDRN' SCHEDULE						RACK 96 MODULES
INCOMING LINE		MAINS RATING		LOAD		
120/208V, 3ø,4W		800 A		30 KVA		
DIMMER NUMBER	WATTAGE RATING	LOAD	LOAD LOCATION	LOAD DESCRIPTION	CONTROL CHANNEL	
1	2400	1030	NORTHWEST EXTERIOR	FIGURE 'LF-01'		
2	2400	620	WEST FRONT EXTERIOR	FIGURE 'LF-01'		
3	2400	680	WEST FRONT EXTERIOR	FIGURE 'LF-01'		
4	2400	550	WEST FRONT EXTERIOR	FIGURE 'LF-01'		
5	2400	570	WEST FRONT EXTERIOR	FIGURE 'LF-01'		
6	2400	920	WEST FRONT EXTERIOR	FIGURE 'LF-01'		
7	2400	840	WEST FRONT EXTERIOR	FIGURE 'LF-01'		
8	2400	970	WEST FRONT EXTERIOR	FIGURE 'LF-01'		
9	2400	570	WEST FRONT EXTERIOR	FIGURE 'LF-01'		
10	2400	620	WEST FRONT EXTERIOR	FIGURE 'LF-01'		
11	2400	1030	SOUTH WEST EXTERIOR	FIGURE 'LF-01'		
12	2400		SPARE			
13	2400	1080	NORTHWEST EXTERIOR	FIGURE 'LF-02'		
14	2400	640	WEST FRONT EXTERIOR	FIGURE 'LF-02'		
15	2400	710	WEST FRONT EXTERIOR	FIGURE 'LF-02'		
16	2400	580	WEST FRONT EXTERIOR	FIGURE 'LF-02'		
17	2400	600	WEST FRONT EXTERIOR	FIGURE 'LF-02'		
18	2400	970	WEST FRONT EXTERIOR	FIGURE 'LF-02'		
19	2400	870	WEST FRONT EXTERIOR	FIGURE 'LF-02'		
20	2400	1010	SOUTH WEST EXTERIOR	FIGURE 'LF-02'		
21	2400		SPARE			
22	2400		SPARE			
23	2400		SPARE			
24	2400		SPARE			
25	2400		SPARE			
26	2400		SPARE			
27	2400		SPARE			
28	2400		SPARE			
29	2400	570	WEST FRONT EXTERIOR	FIGURE 'LF-01'		
30	2400	620	WEST FRONT EXTERIOR	FIGURE 'LF-01'		
31	2400	1030	SOUTH WEST EXTERIOR	FIGURE 'LF-01'		
32	2400		SPARE			
33	2400	1200	GAMING-THEME LTG	FIGURE 'LL-01'	NON-DIM	
34	2400	1390	GAMING-THEME LTG	FIGURE 'LL-01'	NON-DIM	
35	2400	1230	GAMING-THEME LTG	FIGURE 'LL-01'	NON-DIM	
36	2400		SPARE			
37	2400	1330	GAMING GENERAL LTG	FIGURE 'L16'	0-10V	
38	2400	1410	GAMING GENERAL LTG	FIGURE 'L16'	0-10V	
39	2400	1410	GAMING GENERAL LTG	FIGURE 'L16'	0-10V	
40	2400	1100	GAMING GENERAL LTG	FIGURE 'L16'	0-10V	
41	2400	1330	GAMING GENERAL LTG	FIGURE 'L16'	0-10V	
42	2400		SPARE			
43	2400	300	MENS 24 COWMENS 22	MIRROR LTG	NON-DIM	
44	2400	700	MENS 11 COWMENS 13	MIRROR LTG	NON-DIM	
45	2400	960	ENTRY	FIGURE 'T1'	TBD	
46	2400		SPARE			
47	2400	600	VESTIBULE	FIGURE 'LF-03'	TBD	
48	2400		SPARE			

DIMMER 'TCDRN' SCHEDULE						RACK 96 MODULES
INCOMING LINE		MAINS RATING		LOAD		
120/208V, 3ø,4W		800 A		8 KVA		
DIMMER NUMBER	WATTAGE RATING	LOAD	LOAD LOCATION	LOAD DESCRIPTION	CONTROL CHANNEL	
49	2400	110	PLAYERS CLUB	FIGURE 'L14'	TBD	
50	2400		SPARE			
51	2400	480	PLAYERS CLUB	FIGURE 'LL-05'	TBD	
52	2400		SPARE			
53	2400	1040	LOUNGE	FIGURE 'L16'	0-10V	
54	2400	900	LOUNGE	FIGURE 'L16'	0-10V	
55	2400	300	BAR	FIGURE 'LL-02'	TBD	
56	2400	300	BAR	FIGURE 'LL-03'	TBD	
57	2400	300	BAR	FIGURE 'LL-02'	TBD	
58	2400		SPARE			
59	2400	720	GRAB AND GO	FIGURE 'DL9'	TBD	
60	2400		SPARE			
61	2400	360	GRAB AND GO	FIGURE 'DL7'	TBD	
62	2400		SPARE			
63	2400	140	VIP EVENT	FIGURE 'L16'	0-10V	
64	2400		SPARE			
65	2400	110	STEAKHOUSE WAITING	FIGURE 'L15'		
66	2400	440	STEAKHOUSE	FIGURE 'L15'		
67	2400	50	STEAKHOUSE BAR	FIGURE 'L15'		
68	2400	110	STEAKHOUSE DINING	FIGURE 'L15'		
69	2400	160	STEAKHOUSE PRIVATE DINING	FIGURE 'L15'		
70	2400		SPARE			
71	2400	180	STEAKHOUSE PRIVATE DINING	FIGURE 'DL4'		
72	2400	480	STEAKHOUSE	FIGURE 'DL3'		
73	2400	300	STEAKHOUSE BAR	FIGURE 'LL-03'		
74	2400	300	STEAKHOUSE BAR	FIGURE 'LL-02'		
75	2400	300	STEAKHOUSE BAR	FIGURE 'LL-02'		
76	2400	250	SPARE			
77	2400	200	STEAKHOUSE R.R.	MIRRORS	NON-DIM	
78	2400	70	KITCHEN R.R.	MIRRORS	NON-DIM	
79	2400	400	GAMING	COLUMN LIGHTING ELEMENT	TBD	
80	2400	400	GAMING	COLUMN LIGHTING ELEMENT	TBD	
81	2400		SPARE			
82	2400		SPARE			
83	2400		SPARE			
84	2400		SPARE			
85	2400		SPARE			
86	2400		SPARE			
87	2400		SPARE			
88	2400		SPARE			
89	2400		SPARE			
90	2400		SPARE			
91	2400		SPARE			
92	2400		SPARE			
93	2400		SPARE			
94	2400		SPARE			
95	2400		SPARE			
96	2400		SPARE			



**James R. Childers
Architect, Inc.**
45 South 4th Street
Fort Smith, AR 72501
479-783-3488
www.jrchildersarchitect.com



CONSULTANT LOGO

370 E Woodruff Lane, Suite 100
Las Vegas, NV 89123
702.696.1100
msa@msa.com
MSA#118041

CLIENT

Cherokee Nation
Tahlequah Casino

CHEROKEE NATION ENTERTAINMENT
TAHLEQUAH CASINO
TAHLEQUAH, OKLAHOMA

PROJECT NAME
BID PACKAGE 05

REV	DATE	DESCRIPTION
1		
2		
3		
4		
5		
6		
7		
8		
9		
10		

DATE: 05/03/18 JOB NUMBER: 17-06

DRAWING NUMBER: **E0.30**

DIMMER SCHEDULES



**James R. Childers
Architect, Inc.**
46 South 4th Street
Fort Smith, AR 72201
479-783-3466
www.childersarchitect.com



CONSULTANT LOGO
msa
ENGINEERING CONSULTANTS
370 E Woodruff Lane, Suite 100
Las Vegas, NV 89123
702.896.1100
msa@msa.com
MSA#118041



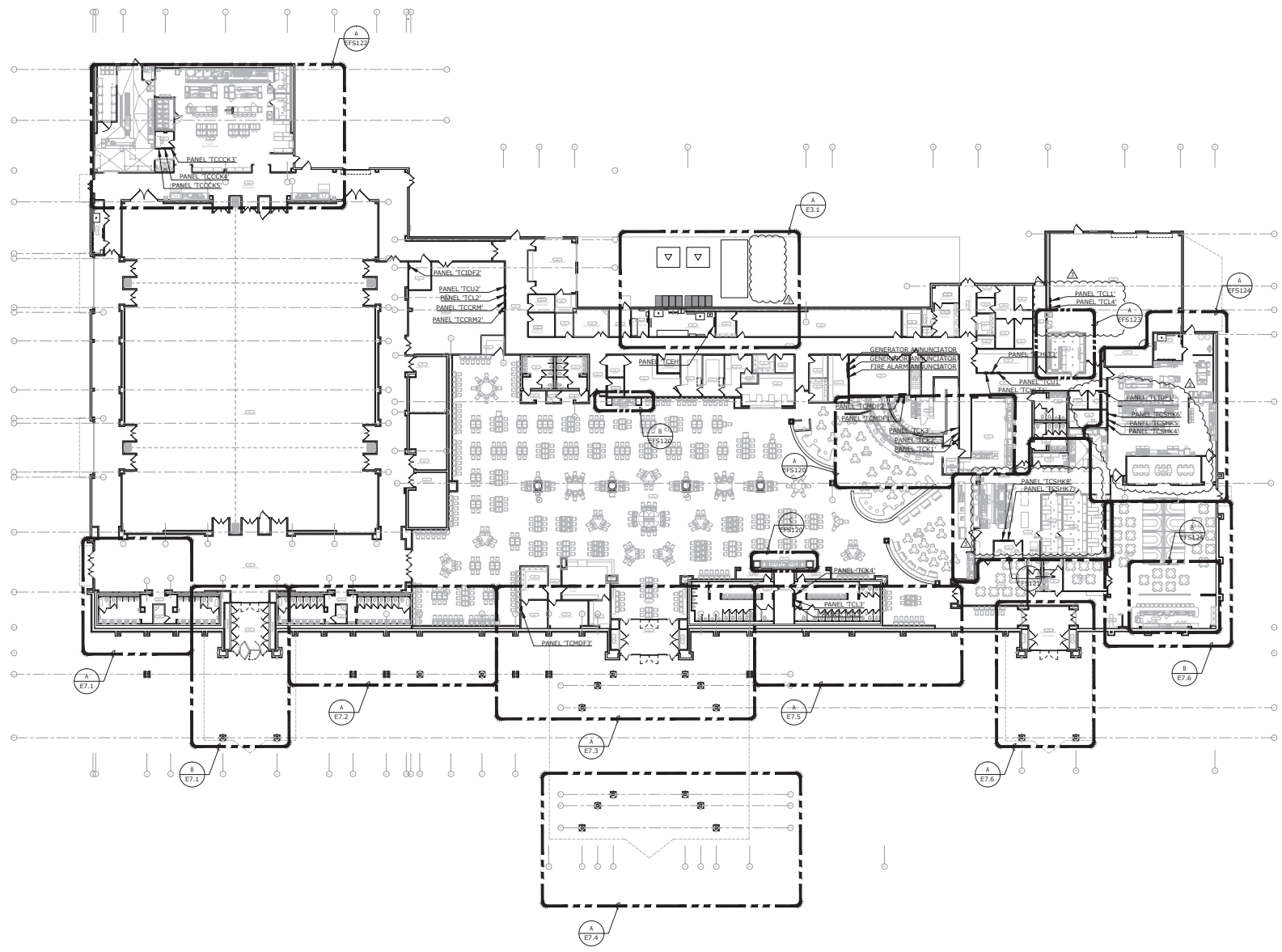
CHEROKEE NATION ENTERTAINMENT
TAHLEQUAH CASINO
TAHLEQUAH, OKLAHOMA

PROJECT FRAME
BID PACKAGE 02
(100% SET)

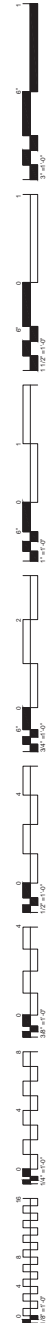
NO.	DATE	DESCRIPTION
1	03/27/18	ISSUED FOR BIDDING
2	03/27/18	PROCEEDING #11
3		
4		
5		

DATE: 03/27/18 JOB NUMBER: 17-06
DRAWN BY:

E1.0
ELECTRICAL OVERVIEW PLAN



A
E1.0 ELECTRICAL OVERVIEW PLAN
3/64" = 1'-0"
NORTH

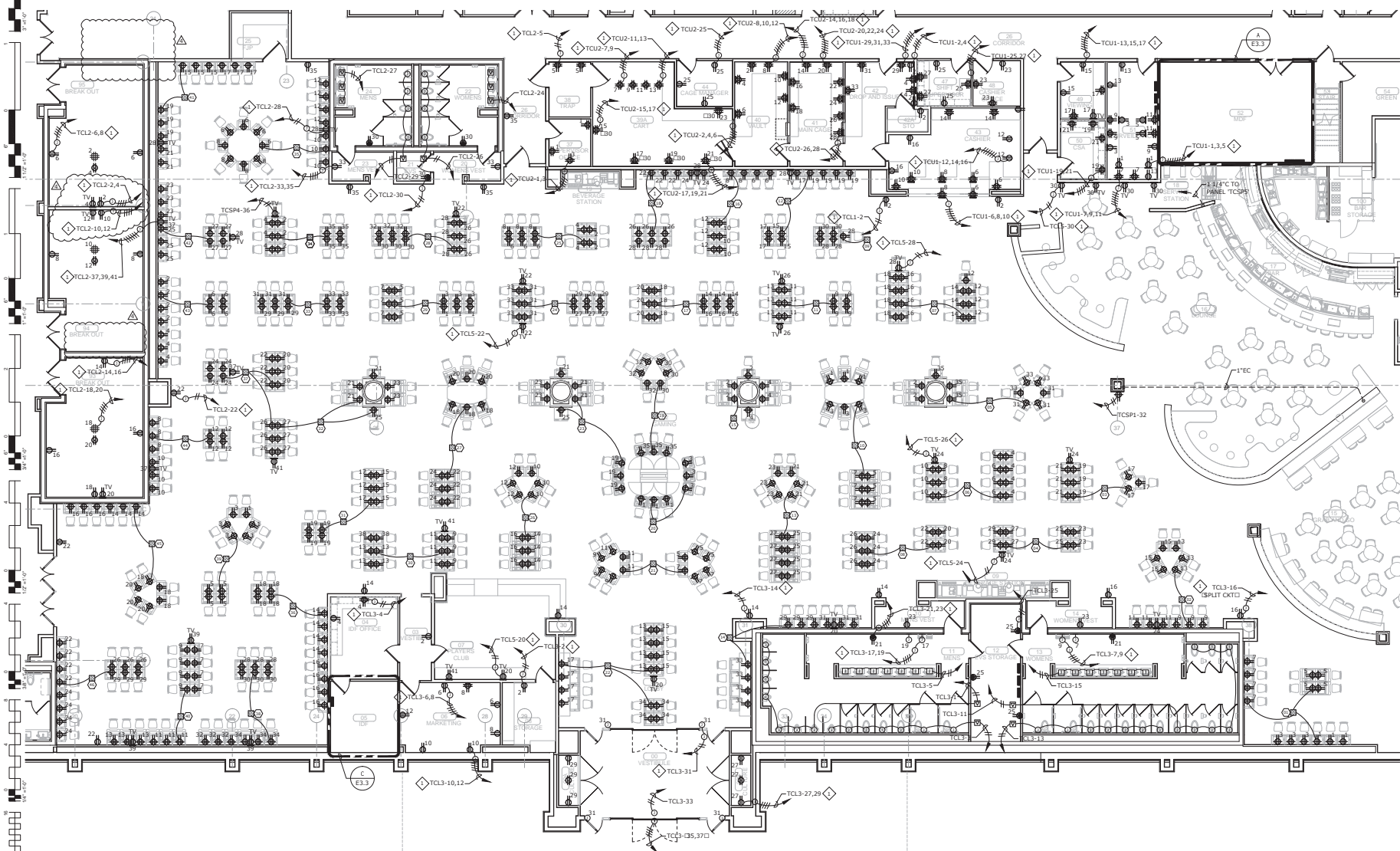


GENERAL NOTES

1. VERIFY EXACT LOCATION OF ALL OUTLETS WITH ARCHITECT PRIOR TO ROUGH-IN.

SHEET NOTES

- ◇ EXTEND AND CONNECT CIRCUITING FROM JUNCTION BOX TO OUTLETS IN AREA WITH SAME CIRCUIT NUMBERS, ROUTE #12 CONDUCTORS (MINIMUM) THROUGHOUT, UNLESS NOTED OTHERWISE.



A ENLARGED POWER PLAN - GAMING
 E1.1 1/8" = 1'-0"
 0' 2' 4' 8' 16'
 NORTH

REVISIONS
 1. REVISED GAMING LAYOUT

James R. Childers Architect, Inc.
 48 South 4th Street
 Fort Smith, AR 72501
 479-783-3888
 www.jrchildersarchitect.com

PROFESSIONAL SEAL

 JULY 13, 2018

CONSULTANT LOGO

msa
 ENGINEERING CONSULTANTS
 370 E Woodruff Lane, Suite 100
 Las Vegas, NV 89123
 702.696.1100
 msa.com
 MSA#118041

CLIENT

Cherokee
 CASINO

CHEROKEE NATION ENTERTAINMENT
 TAHLEQUAH CASINO
 TAHLEQUAH, OKLAHOMA

PROJECT NAME
BID PACKAGE 02 (100% SET)

NO.	DATE	DESCRIPTION
1	03/27/18	ISSUED FOR BIDDING
2	03/27/18	ISSUED FOR BIDDING
3	03/27/18	ISSUED FOR BIDDING
4	03/27/18	ISSUED FOR BIDDING
5	03/27/18	ISSUED FOR BIDDING

DATE: 03/27/18 JOB NUMBER: 17-06

SHEET NUMBER: E1.1

ENLARGED POWER PLAN - GAMING



- GENERAL NOTES**
- REFER TO SHEET E1.0 FOR THE LOCATION OF PANEL 'TCU1' AND PANEL 'TCL4'.
 - VERIFY EXACT LOCATION OF ALL OUTLETS WITH ARCHITECT PRIOR TO ROUGH-IN.
- SHEET NOTES**
- EXTEND AND CONNECT CIRCUITING FROM JUNCTION BOX TO OUTLETS IN AREA WITH SAME CIRCUIT NUMBERS, ROUTE #12 CONDUCTORS MINIMUM THROUGHOUT, UNLESS NOTED OTHERWISE.

**James R. Childers
Architect, Inc.**
46 South 4th Street
Fort Smith, AR 72501
479-783-3480
www.childersarchitect.com



CONSULTANT LOGO

msa
ENGINEERING CONSULTANTS
370 E Woodruff Lane, Suite 100
Las Vegas, NV 89123
702.896.1100
msa-nc.com
MSA#118041

CLIENT

**CHEROKEE NATION
ENTERTAINMENT**
**Cherokee
CASINO**

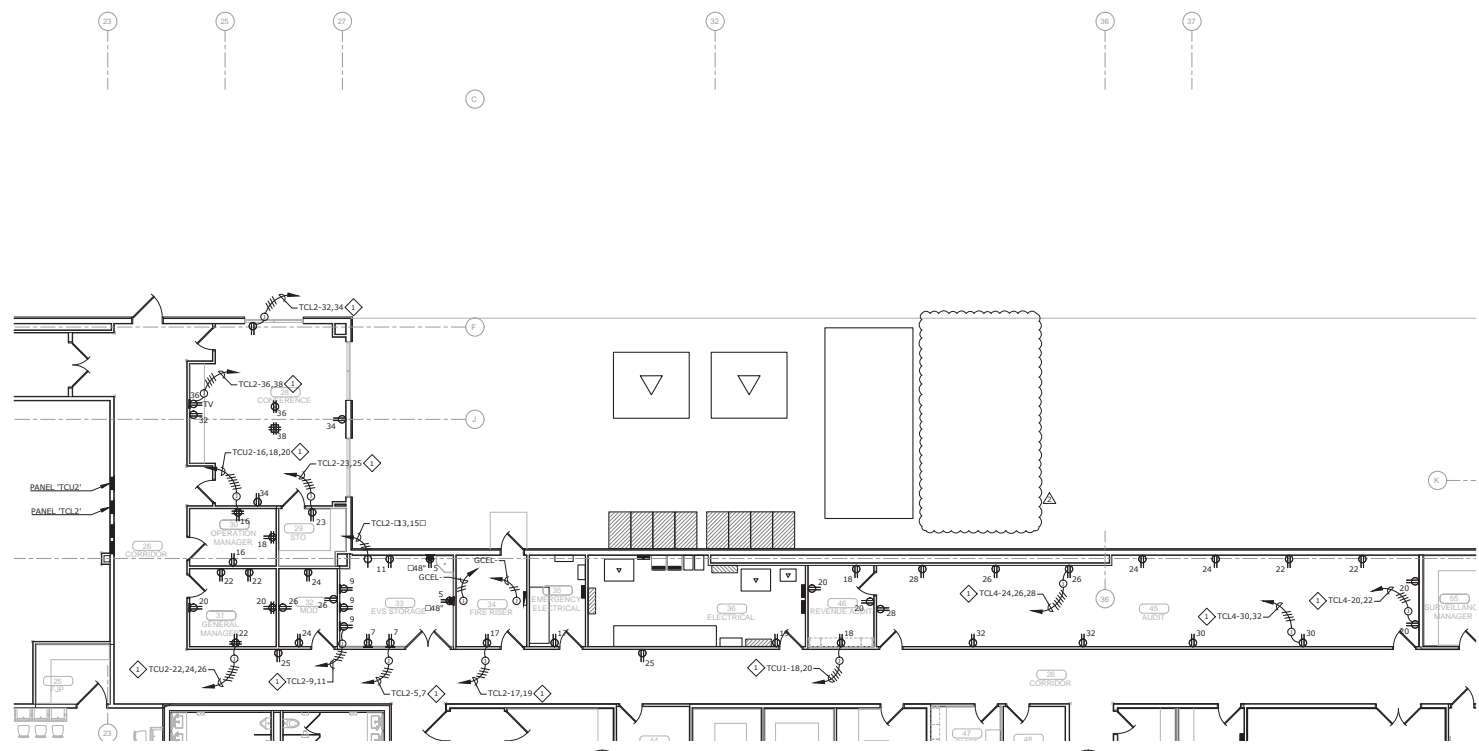
CHEROKEE NATION ENTERTAINMENT
TAHLEQUAH CASINO
TAHLEQUAH, OKLAHOMA

PROJECT NAME
BID PACKAGE 05

NO.	DATE	DESCRIPTION
1		
2		
3		

DATE: 05/03/18 JOB NUMBER: 17-06
DRAWN BY:

E1.1A
ENLARGED POWER
PLAN - EAST



A
E1.1A ENLARGED POWER PLAN - EAST
1/8" = 1'-0"
0' 2' 4' 8' 10'
NORTH



**James R. Childers
Architect, Inc.**
46 South 4th Street
Fort Smith, AR 72501
479-783-3488
www.childersarchitect.com



CONSULTANT LOGO
msa
ENGINEERING CONSULTANTS
370 E Woodruff Lane, Suite 100
Las Vegas, NV 89123
702.896.1100
msa-nc.com
MSA#118041



CHEROKEE NATION ENTERTAINMENT
TAHLEQUAH CASINO
TAHLEQUAH, OKLAHOMA

PROJECT NAME
BID PACKAGE 05

NO.	DATE	DESCRIPTION
1		
2		
3		

DATE: 05/03/18 JOB NUMBER: 17-06

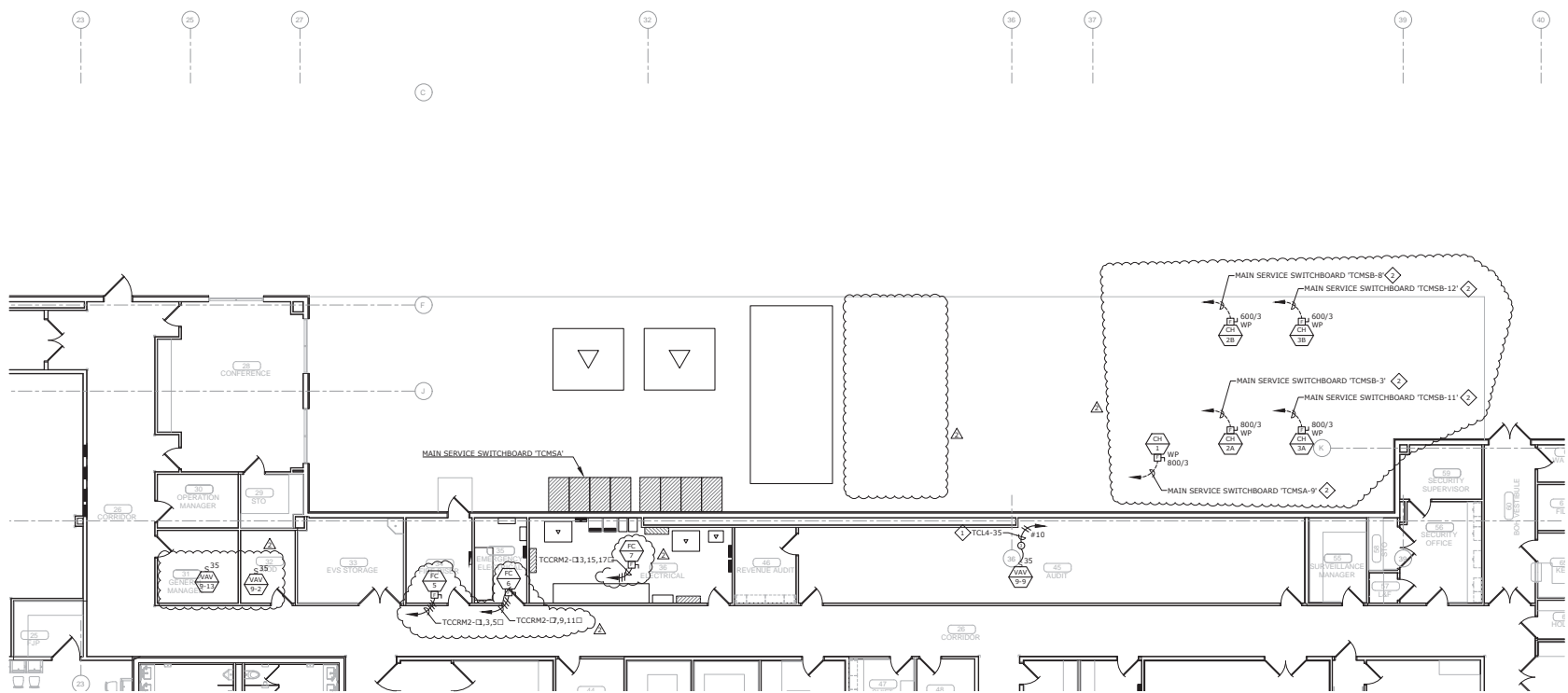
REVISIONS:
E1.1AM
ENLARGED MECHANICAL POWER PLAN - EAST

GENERAL NOTES

1. VERIFY EXACT LOCATION OF ALL MECHANICAL EQUIPMENT WITH MECHANICAL CONTRACTOR PRIOR TO ROUGH-IN.

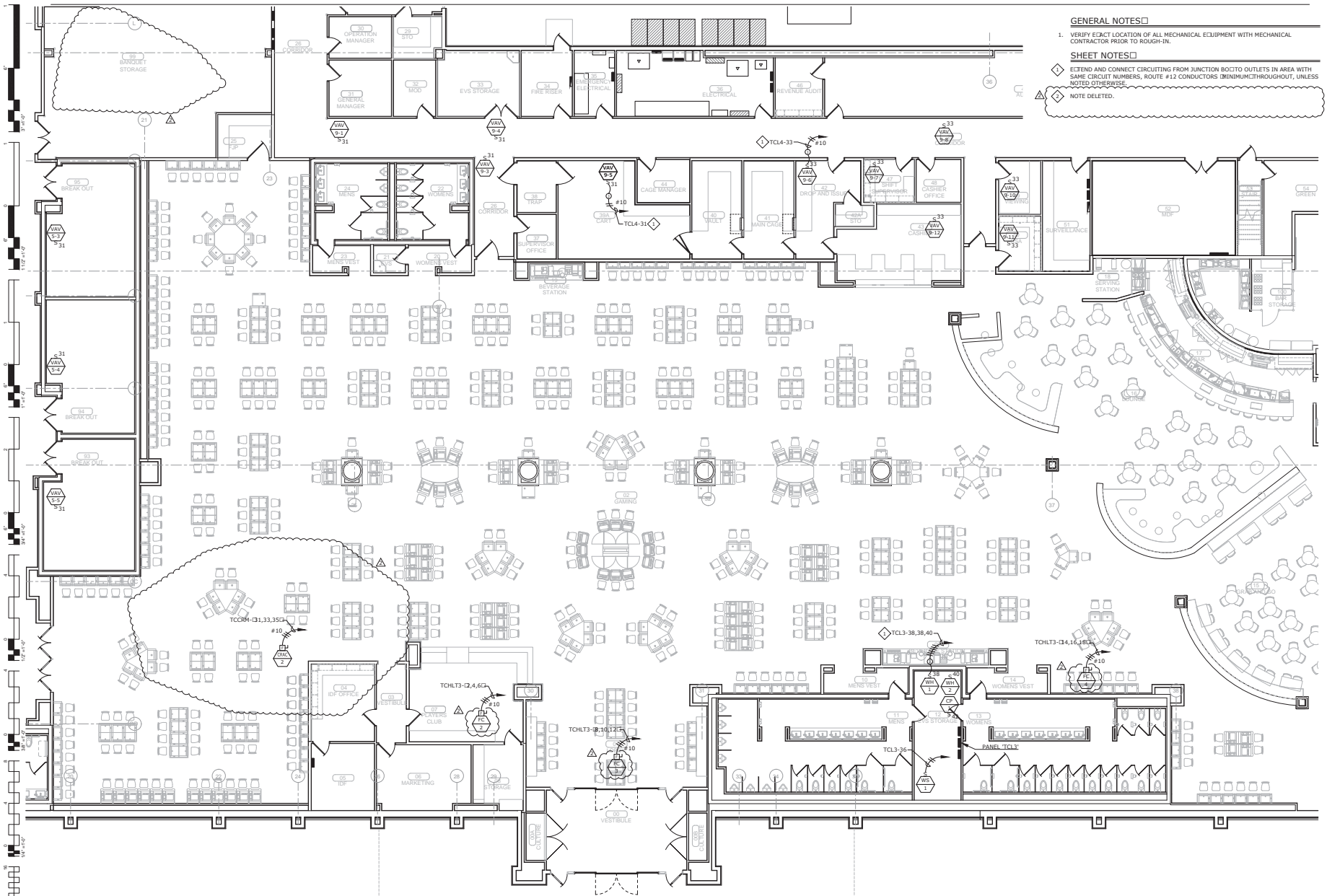
SHEET NOTES

- ◇ EXTEND AND CONNECT CIRCUITING FROM JUNCTION BOGTO OUTLETS IN AREA WITH SAME CIRCUIT NUMBERS, ROUTE #12 CONDUCTORS THROUGHOUT, UNLESS NOTED OTHERWISE.
- ◇ REFER TO SHEET E0.10 FOR ADDITIONAL REQUIREMENTS.



A ENLARGED MECHANICAL POWER PLAN - EAST
E1.1AM 1/8" = 1'-0"
0' 2' 4' 8' 10'
NORTH





GENERAL NOTES

1. VERIFY EXACT LOCATION OF ALL MECHANICAL EQUIPMENT WITH MECHANICAL CONTRACTOR PRIOR TO ROUGH-IN.

SHEET NOTES

- ◇ EXTEND AND CONNECT CIRCUITING FROM JUNCTION BOX TO OUTLETS IN AREA WITH SAME CIRCUIT NUMBERS, ROUTE #12 CONDUCTORS THROUGHOUT, UNLESS NOTED OTHERWISE.
- △ NOTE DELETED.

A ENLARGED MECHANICAL POWER PLAN - GAMING
E1.1M 1/8" = 1'-0"
 0' 2' 4' 8' 10'
 NORTH



**James R. Childers
 Architect, Inc.**
 46 South 4th Street
 Fort Smith, AR 72201
 479-783-3488
 www.childersarchitect.com



msa
 ENGINEERING CONSULTANTS
 370 E Woodruff Lane, Suite 100
 Las Vegas, NV 89123
 702.896.1100
 msa@msa.com
 MSA#L18041



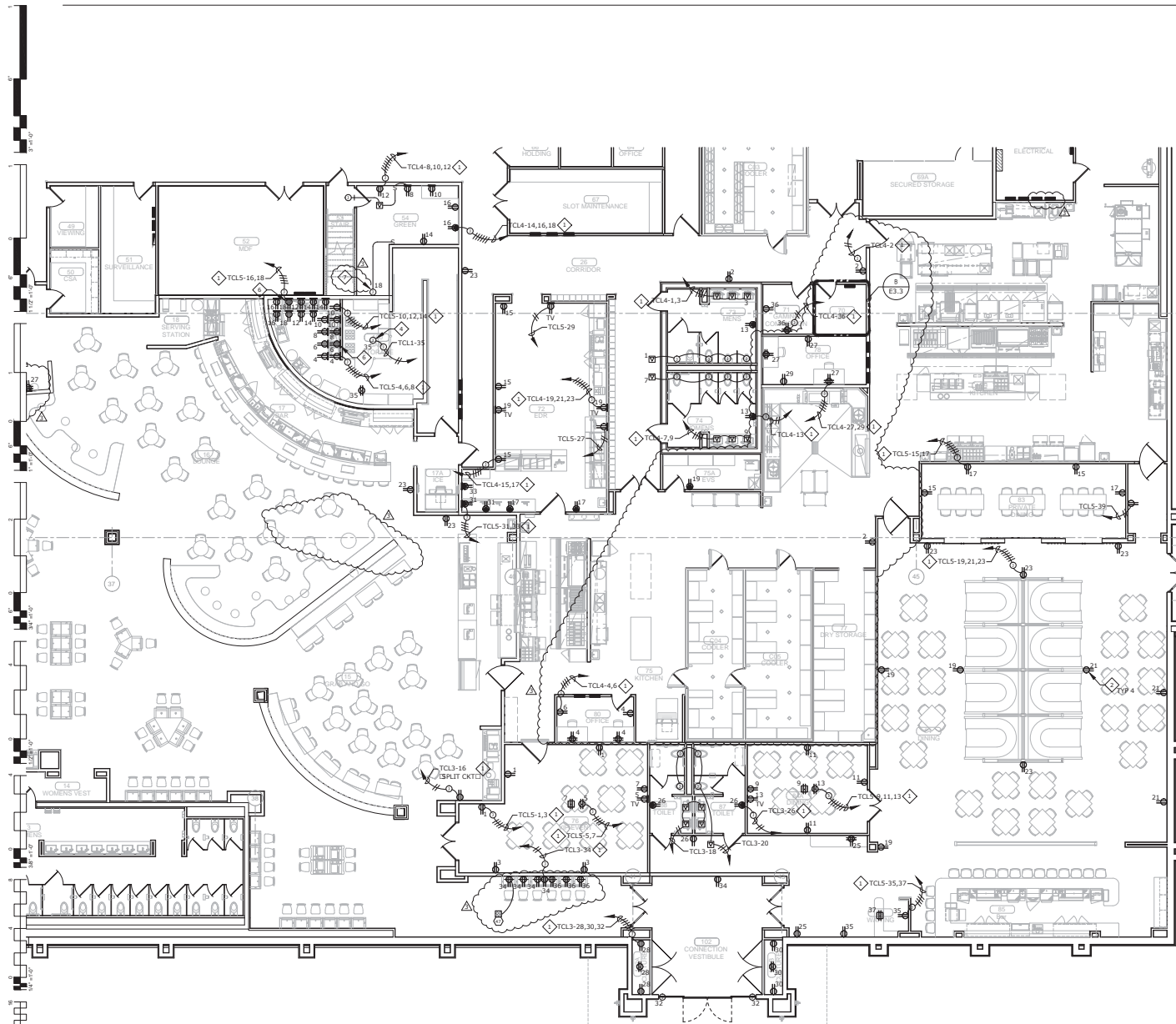
CHEROKEE NATION ENTERTAINMENT
 TAHLEQUAH CASINO
 TAHLEQUAH, OKLAHOMA

PROJECT NAME
BID PACKAGE 05

NO.	DATE	DESCRIPTION
1		
2		
3		

DATE: **05/03/18** JOB NUMBER: **17-06**

PROJECT NUMBER:
E1.1M
 ENLARGED MECHANICAL POWER PLAN - GAMING



GENERAL NOTES

1. VERIFY EXACT LOCATION OF ALL OUTLETS WITH ARCHITECT PRIOR TO ROUGH-IN.

SHEET NOTES

- ◇ EXTEND AND CONNECT CIRCUITING FROM JUNCTION BOX TO OUTLETS IN AREA WITH SAME CIRCUIT NUMBERS, ROUTE #12 CONDUCTORS (MINIMUM) THROUGHOUT, UNLESS NOTED OTHERWISE.
- ◇ RECEPTACLE TO BE INSTALLED IN THE MILLWORK, COORDINATE RECEPTACLE LOCATION AND INSTALLATION WITH THE MILLWORK CONTRACTOR PRIOR TO ROUGH-IN.
- ◇ PROVIDE RECEPTACLE FOR STAGE PROJECTOR, COORDINATE RECEPTACLE LOCATION AND INSTALLATION REQUIREMENTS WITH THE AV CONTRACTOR PRIOR TO ROUGH-IN.
- ◇ PROVIDE POWER CIRCUIT FOR PROJECTOR SCREEN, COORDINATE JUNCTION BOX LOCATION WITH THE AV CONTRACTOR PRIOR TO ROUGH-IN.
- ◇ PROVIDE RECEPTACLES FOR SOUND BOOTH, COORDINATE RECEPTACLE LOCATIONS WITH THE AV CONTRACTOR PRIOR TO ROUGH-IN.
- ◇ PROVIDE RECEPTACLES FOR VIDEO WALL, COORDINATE RECEPTACLE LOCATIONS, MOUNTING HEIGHTS AND INSTALLATION REQUIREMENTS WITH THE AV CONTRACTOR PRIOR TO ROUGH-IN.
- ◇ JUNCTION BOX TO SERVE POWER REQUIREMENTS FOR LIFT STATION.

A ENLARGED POWER PLAN - SOUTH
E1.2 1/8" = 1'-0"
 0' 2' 4' 8' 10'
 NORTH

**James R. Childers
Architect, Inc.**
 45 South 4th Street
 Fort Smith, AR 72201
 479-783-3466
 www.jrchitect.com

CONSULTANT LOGO

msa
 ENGINEERING CONSULTANTS
 370 E Windsor Lane, Suite 100
 Las Vegas, NV 89123
 702.896.1100
 msa@msa.com
 MSA#118041

CLIENT

CHEROKEE NATION ENTERTAINMENT
TAHLEQUAH CASINO
 TAHLEQUAH, OKLAHOMA

PROJECT NAME
BID PACKAGE 05

NO.	DATE	DESCRIPTION
1		
2		
3		
4		
5		

DATE: **05/03/18** JOB NUMBER: **17-06**

SHEET NUMBER: **E1.2**

ENLARGED POWER PLAN - SOUTH



**James R. Childers
Architect, Inc.**
46 South 4th Street
Fort Smith, AR 72201
479-783-3488
www.childersarchitect.com



CONSULTANT LOGO

msa
ENGINEERING CONSULTANTS
370 E Woodruff Lane, Suite 100
Las Vegas, NV 89123
702.896.1100
msa-nc.com
MSA#118041



CLIENT

CHEROKEE NATION
Entertainment

Cherokee
CASINO

CHEROKEE NATION ENTERTAINMENT
TAHLEQUAH CASINO
TAHLEQUAH, OKLAHOMA

PROJECT NAME

BID PACKAGE 05

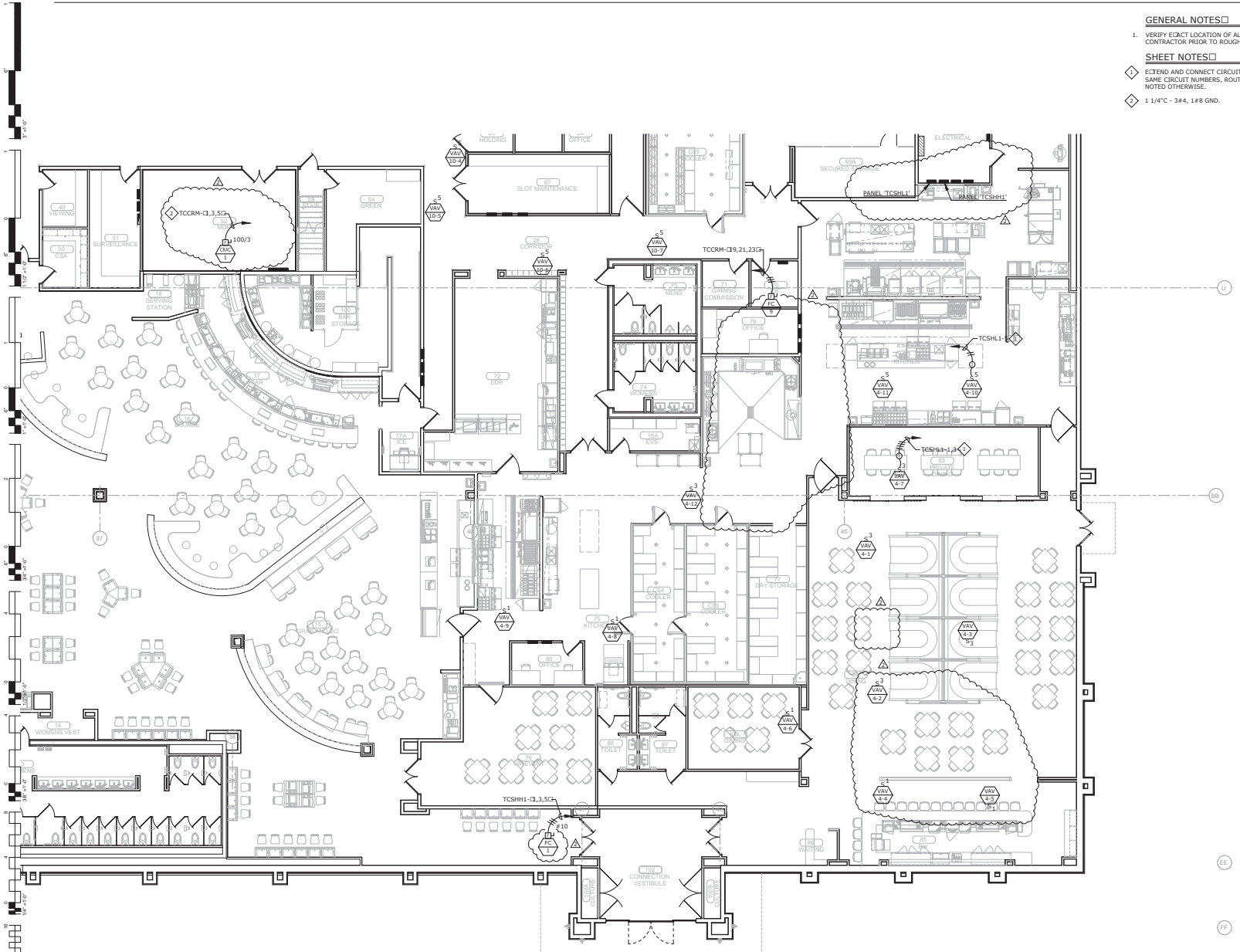
NO.	DATE	DESCRIPTION
1		
2		
3		
4		
5		
6		

DATE: 05/03/18 JOB NUMBER: 17-06

E1.2M

ENLARGED MECHANICAL POWER PLAN - SOUTH

- GENERAL NOTES**
1. VERIFY EXACT LOCATION OF ALL MECHANICAL EQUIPMENT WITH MECHANICAL CONTRACTOR PRIOR TO ROUGH-IN.
- SHEET NOTES**
- ◇ EXTEND AND CONNECT CIRCUITING FROM JUNCTION BOGTO OUTLETS IN AREA WITH SAME CIRCUIT NUMBERS, ROUTE #12 CONDUCTORS THROUGHOUT, UNLESS NOTED OTHERWISE.
 - ◇ 1 1/4" C - 3#4, 1#8 GND.



A
E1.2M
ENLARGED MECHANICAL POWER PLAN - SOUTH
1/8" = 1'-0"
0 2 4 8 10'
NORTH



**James R. Childers
Architect, Inc.**
40 South 4th Street
Fort Smith, AR 72201
479-783-3488
www.jrchildersarchitect.com



CONSULTANT LOGO

msa
ENGINEERING CONSULTANTS
370 E Woodruff Lane, Suite 100
Las Vegas, NV 89123
702.896.1100
msa-ar.com
MSA#118041



CHEROKEE NATION ENTERTAINMENT
TAHLEQUAH CASINO
TAHLEQUAH, OKLAHOMA

PROJECT NAME
BID PACKAGE 05

NO.	DATE	DESCRIPTION
1		
2		
3		

DATE: 05/03/18 JOB NUMBER: 17-06

PROJECT NUMBER: E1.3

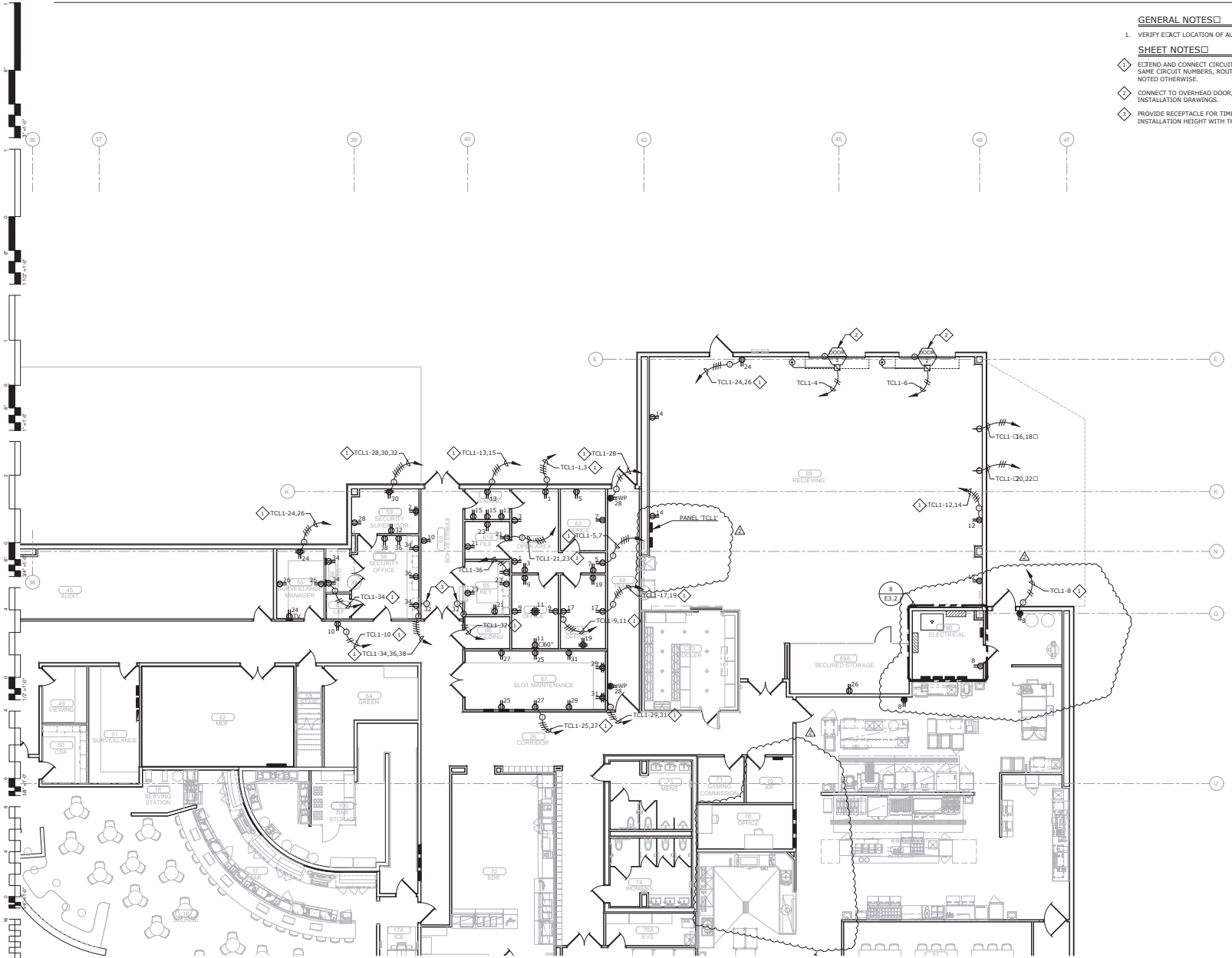
ENLARGED POWER PLAN - BOH

GENERAL NOTES

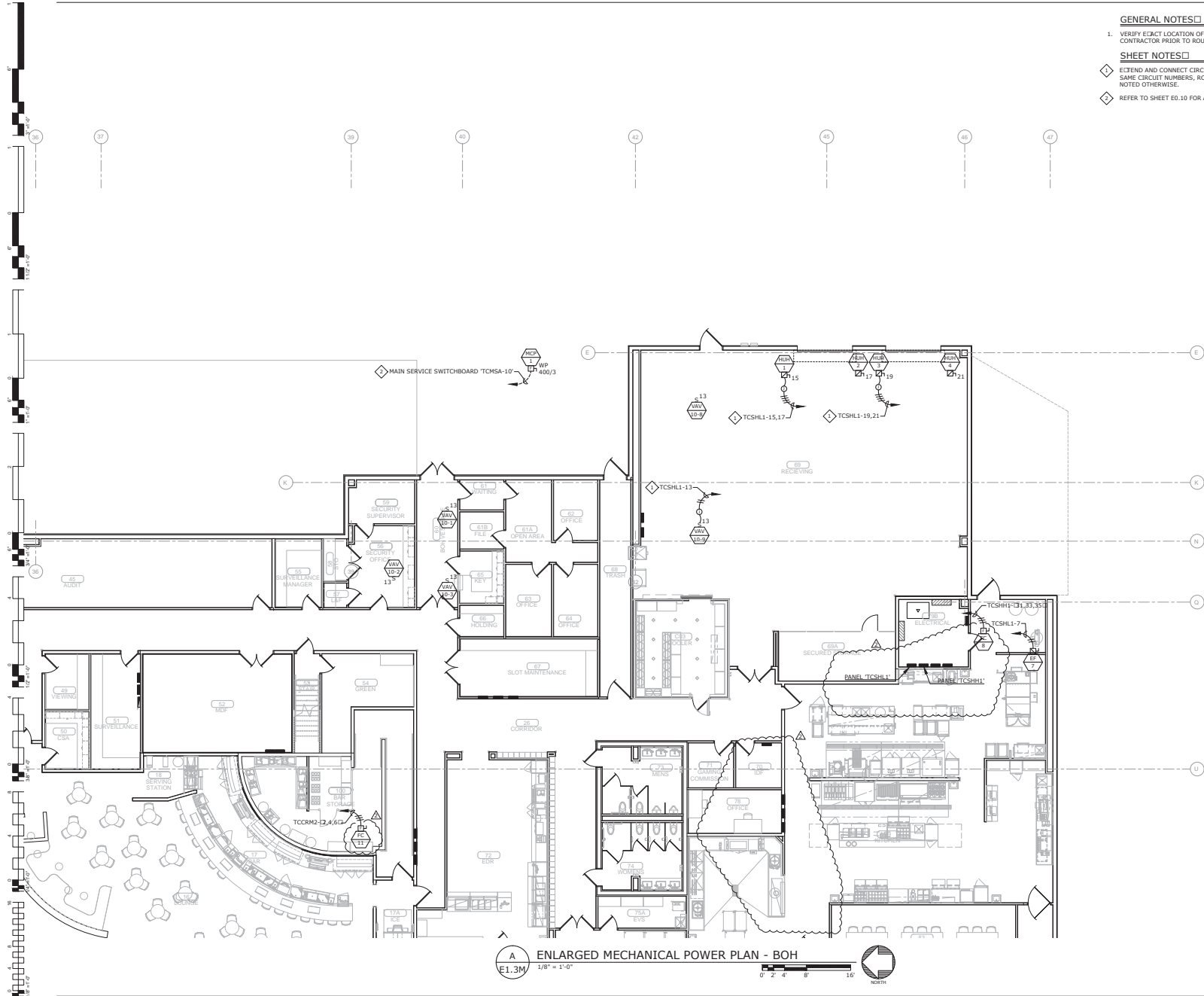
1. VERIFY EXACT LOCATION OF ALL OUTLETS WITH ARCHITECT PRIOR TO ROUGH-IN.

SHEET NOTES

- ◇ EXTEND AND CONNECT CIRCUITING FROM JUNCTION BOX TO OUTLETS IN AREA WITH SAME CIRCUIT NUMBERS, ROUTE #12 CONDUCTORS (MINIMUM) THROUGHOUT, UNLESS NOTED OTHERWISE.
- ◇ CONNECT TO OVERHEAD DOOR, AND UP/DOWN CONTROLS PER MANUFACTURER'S INSTALLATION DRAWINGS.
- ◇ PROVIDE RECEPTACLE FOR TIME CLOCK. COORDINATE RECEPTACLE LOCATION AND INSTALLATION HEIGHT WITH THE OWNER PRIOR TO ROUGH-IN.



A
E1.3 ENLARGED POWER PLAN - BOH
1/8" = 1'-0"
0' 2' 4' 8' 16'
NORTH



GENERAL NOTES

1. VERIFY EXACT LOCATION OF ALL MECHANICAL EQUIPMENT WITH MECHANICAL CONTRACTOR PRIOR TO ROUGH-IN.

SHEET NOTES

- ◇ EXTEND AND CONNECT CIRCUITING FROM JUNCTION BOGTO OUTLETS IN AREA WITH SAME CIRCUIT NUMBERS, ROUTE #12 CONDUCTORS THROUGHOUT, UNLESS NOTED OTHERWISE.
- ◇ REFER TO SHEET E0.10 FOR ADDITIONAL REQUIREMENTS.



**James R. Childers
Architect, Inc.**
45 South 4th Street
Fort Smith, AR 72201
479-783-3488
www.childersarchitect.com



CONSULTANT LOGO

msa
ENGINEERING CONSULTANTS
370 E Woodruff Lane, Suite 100
Las Vegas, NV 89123
702.896.1100
msa-nc.com
MSA#118041

CLIENT

**Cherokee
CASINO**

**CHEROKEE NATION ENTERTAINMENT
TAHLEQUAH CASINO**
TAHLEQUAH, OKLAHOMA

PROJECT NAME
BID PACKAGE 05

NO.	DATE	DESCRIPTION
1		ISSUED FOR PERMIT
2		ISSUED FOR PERMIT
3		ISSUED FOR PERMIT

DATE: 05/03/18 JOB NUMBER: 17-06

SHEET NUMBER:
E1.3M
ENLARGED MECHANICAL POWER PLAN - BOH



**James R. Childers
Architect, Inc.**
48 South 4th Street
Fort Smith, AR 72501
479-783-3466
www.childersarchitect.com



CONSULTANT LOGO



CLIENT
CHEROKEE NATION
Cherokee
CASINO
TALHEQUAH OKLAHOMA

PROJECT NAME
BID PACKAGE 05

NO.	DATE	DESCRIPTION
1		ISSUED FOR PERIODIC P11
2		ISSUED FOR PERIODIC P11
3		ISSUED FOR PERIODIC P11

DATE: 05/03/18 JOB NUMBER: 17-06

SHEET NUMBER: **E1.4**

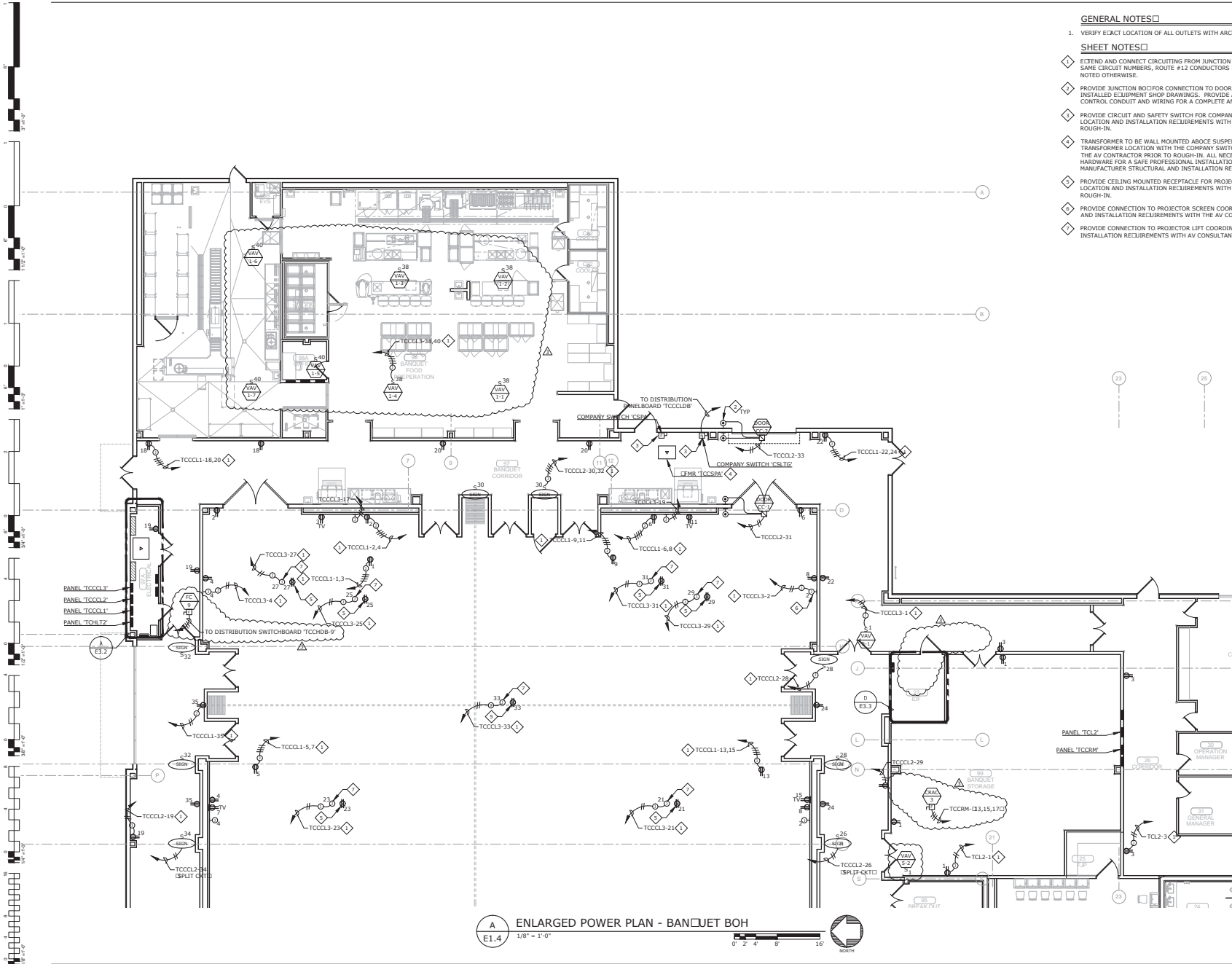
ENLARGED POWER PLAN - BANQUET BOH

GENERAL NOTES

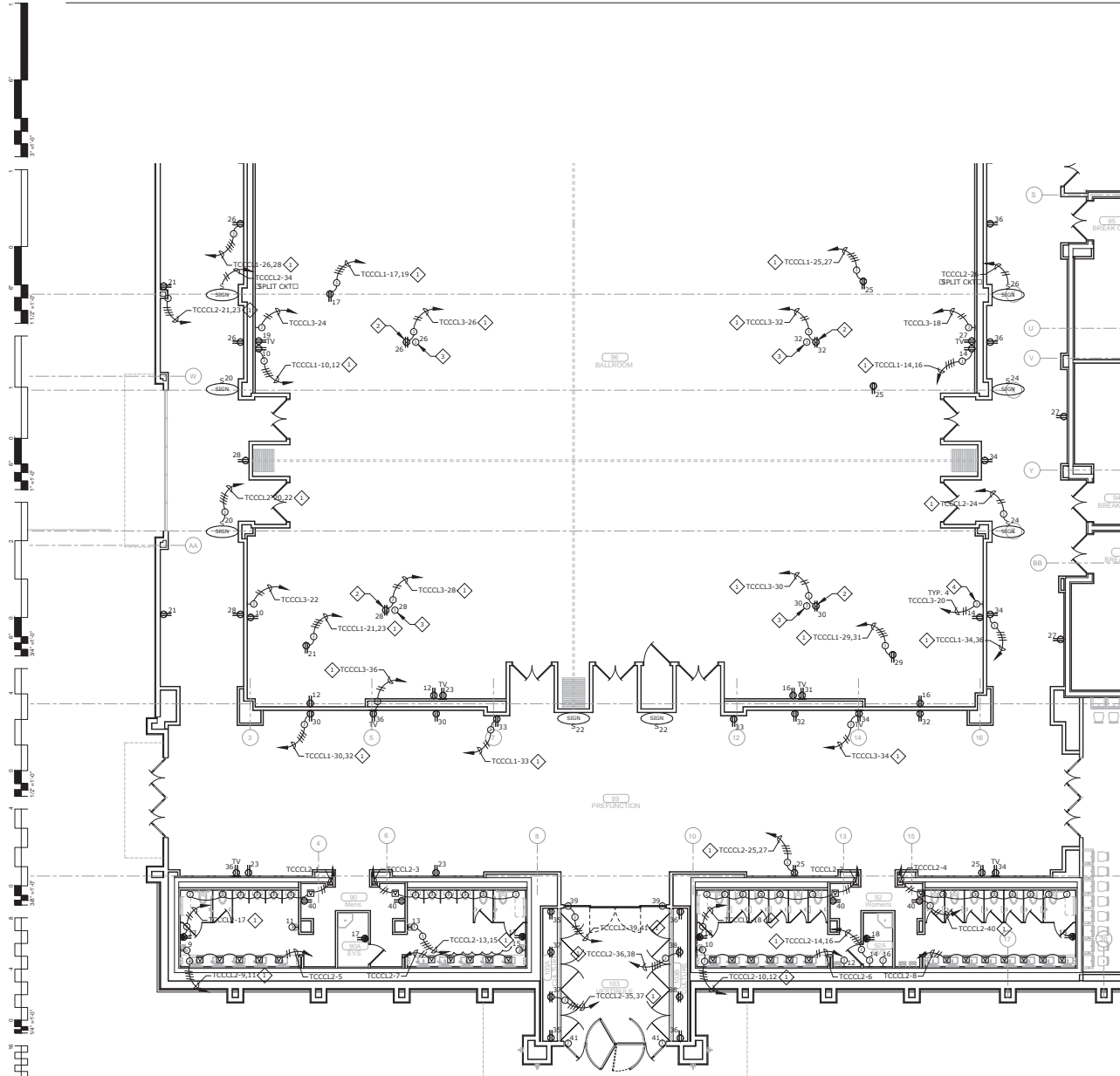
1. VERIFY EXACT LOCATION OF ALL OUTLETS WITH ARCHITECT PRIOR TO ROUGH-IN.

SHEET NOTES

- ◇ EXTEND AND CONNECT CIRCUITING FROM JUNCTION BOG TO OUTLETS IN AREA WITH SAME CIRCUIT NUMBERS, ROUTE #12 CONDUCTORS (MINIMUM) THROUGHOUT, UNLESS NOTED OTHERWISE.
- ◇ PROVIDE JUNCTION BOG FOR CONNECTION TO DOOR HOLDERS AND CONNECT PER INSTALLED EQUIPMENT SHOP DRAWINGS. PROVIDE ALL NECESSARY POWER AND CONTROL CONDUIT AND WIRING FOR A COMPLETE AND OPERABLE SYSTEM.
- ◇ PROVIDE CIRCUIT AND SAFETY SWITCH FOR COMPANY SWITCH. COORDINATE SWITCH LOCATION AND INSTALLATION REQUIREMENTS WITH THE AV CONSULTANT PRIOR TO ROUGH-IN.
- ◇ TRANSFORMER TO BE WALL MOUNTED ABOVE SUSPENDED CEILING. COORDINATE TRANSFORMER LOCATION WITH THE COMPANY SWITCH 'CSPA' LOCATION AND WITH THE AV CONSULTANT PRIOR TO ROUGH-IN. ALL NECESSARY MOUNTING BRACKETS, HARDWARE FOR A SAFE PROFESSIONAL INSTALLATION, CONFORM WITH TRANSFORMER MANUFACTURER STRUCTURAL AND INSTALLATION REQUIREMENTS.
- ◇ PROVIDE CEILING MOUNTED RECEPTACLE FOR PROJECTOR. COORDINATE RECEPTACLE LOCATION AND INSTALLATION REQUIREMENTS WITH THE AV CONSULTANT PRIOR TO ROUGH-IN.
- ◇ PROVIDE CONNECTION TO PROJECTOR SCREEN COORDINATE CONNECTION LOCATION AND INSTALLATION REQUIREMENTS WITH THE AV CONSULTANT PRIOR TO ROUGH-IN.
- ◇ PROVIDE CONNECTION TO PROJECTOR LIFT COORDINATE CONNECTION LOCATION AND INSTALLATION REQUIREMENTS WITH AV CONSULTANT PRIOR TO ROUGH-IN.



A ENLARGED POWER PLAN - BANQUET BOH
E1.4 1/8" = 1'-0"
0' 2' 4' 8' 16'
NORTH



A ENLARGED POWER PLAN - NORTH
E1.5 1/8" = 1'-0"



GENERAL NOTES

1. VERIFY EXACT LOCATION OF ALL OUTLETS WITH ARCHITECT PRIOR TO ROUGH-IN.

SHEET NOTES

- ◇ EXTEND AND CONNECT CIRCUITING FROM JUNCTION BOX TO OUTLETS IN AREA WITH SAME CIRCUIT NUMBERS, ROUTE #12 CONDUCTORS (MINIMUM) THROUGHOUT, UNLESS NOTED OTHERWISE.
- ◇ PROVIDE CEILING MOUNTED RECEPTACLE FOR PROJECTOR. COORDINATE RECEPTACLE LOCATION AND INSTALLATION REQUIREMENTS WITH THE AV CONSULTANT PRIOR TO ROUGH-IN.
- ◇ PROVIDE CONNECTION TO PROJECTOR LIFT COORDINATE CONNECTION LOCATION AND INSTALLATION REQUIREMENTS WITH THE AV CONSULTANT PRIOR TO ROUGH-IN.
- ◇ PROVIDE CONNECTION TO PROJECTOR SCREEN COORDINATE CONNECTION LOCATION AND INSTALLATION REQUIREMENTS WITH THE AV CONSULTANT PRIOR TO ROUGH-IN.



**James R. Childers
Architect, Inc.**
46 South 4th Street
Fort Smith, AR 72501
479-783-3480
www.jrchildersarchitect.com



CONSULTANT LOGO

msa
ENGINEERING CONSULTANTS
370 E Windsor Lane, Suite 100
Las Vegas, NV 89123
702.896.1100
msa@msa.com
MSA#118041

CLIENT

CHEROKEE NATION
ENTERTAINMENT
Cherokee
CASINO

CHEROKEE NATION ENTERTAINMENT
TAHLEQUAH CASINO
TAHLEQUAH, OKLAHOMA

PROJECT NAME
BID PACKAGE 05

NO.	DATE	DESCRIPTION
1	05/03/18	PROVISIONS #11
2	05/03/18	PROVISIONS #11
3		
4		
5		

DATE: 05/03/18 JOB NUMBER: 17-06

DRAWN BY: E1.5



ENLARGED POWER PLAN - NORTH



**James R. Childers
Architect, Inc.**
44 South 4th Street
Fort Smith, AR 72201
479-783-3488
www.jrchildersarchitect.com



CONSULTANT LOGO

msa
ENGINEERING CONSULTANTS
370 E Woodruff Lane, Suite 100
Las Vegas, NV 89123
702.896.1100
msa-nc.com
MSA#118041

CLIENT

CHEROKEE NATION
Entertainment & Resorts
Cherokee
CASINO

CHEROKEE NATION ENTERTAINMENT
TAHLEQUAH CASINO
TAHLEQUAH, OKLAHOMA

PROJECT NAME
BID PACKAGE 05

NO.	DATE	DESCRIPTION

DATE: 05/03/18 JOB NUMBER: 17-06

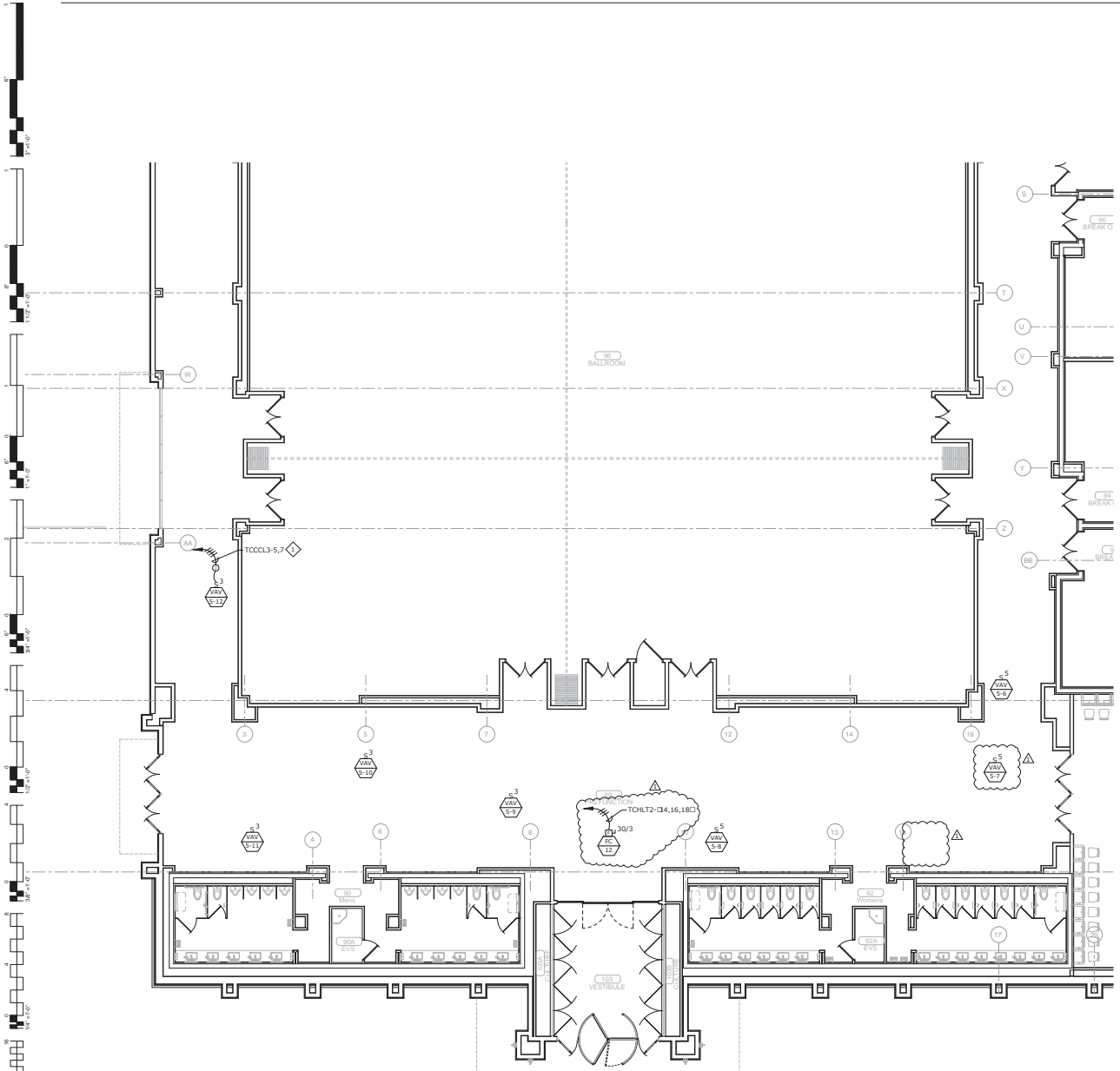
SHEET NUMBER:
E1.5M
ENLARGED MECHANICAL POWER PLAN - NORTH

GENERAL NOTES

1. VERIFY EXACT LOCATION OF ALL MECHANICAL EQUIPMENT WITH MECHANICAL CONTRACTOR PRIOR TO ROUGH-IN.

SHEET NOTES

- ◇ EXTEND AND CONNECT CIRCUITING FROM JUNCTION BOGTO OUTLETS IN AREA WITH SAME CIRCUIT NUMBERS, ROUTE #12 CONDUCTORS THROUGHOUT, UNLESS NOTED OTHERWISE.



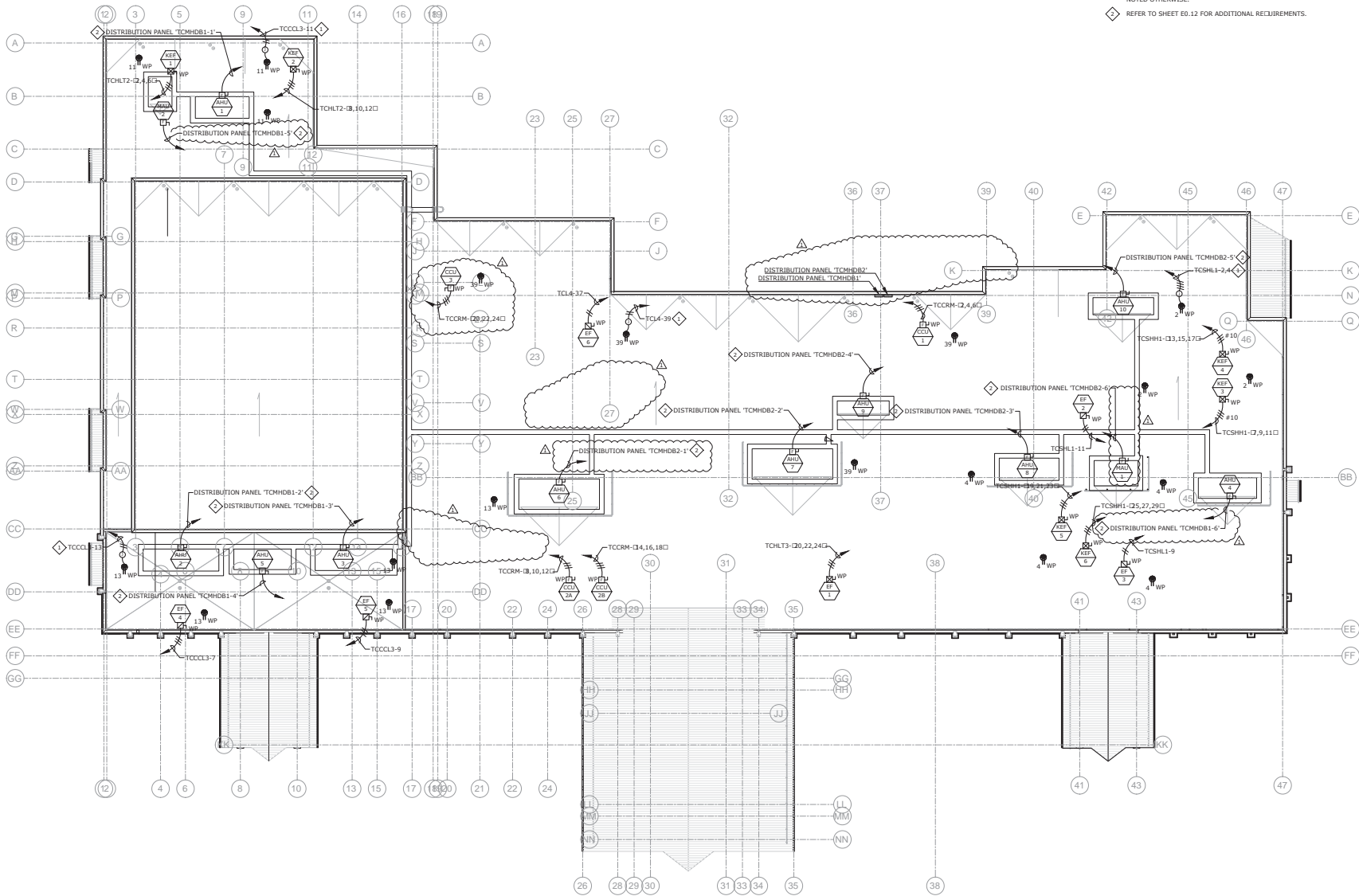
A ENLARGED MECHANICAL POWER PLAN - NORTH
E1.5M 1/8" = 1'-0"
0' 2' 4' 8' 16'
NORTH

GENERAL NOTES

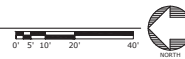
1. VERIFY EXACT LOCATION OF ALL MECHANICAL EQUIPMENT WITH MECHANICAL CONTRACTOR PRIOR TO ROUGH-IN.

SHEET NOTES

- ◇ EXTEND AND CONNECT CIRCUITING FROM JUNCTION BOG TO OUTLETS IN AREA WITH SAME CIRCUIT NUMBERS, ROUTE #12 CONDUCTORS THROUGHOUT, UNLESS NOTED OTHERWISE.
- ◇ REFER TO SHEET E0.12 FOR ADDITIONAL REQUIREMENTS.



A POWER PLAN - ROOF
E1.6 1" = 20'-0"



James R. Childers Architect, Inc.
46 South 4th Street
Fort Smith, AR 72501
479-783-3488
www.childersarchitect.com



CONSULTANT LOGO

msa
ENGINEERING CONSULTANTS
370 E Woodruff Lane, Suite 100
Las Vegas, NV 89123
702.896.1100
msa@msa.com
MSA#118041

CLIENT

Cherokee
CASINO

CHEROKEE NATION ENTERTAINMENT
TAHLEQUAH CASINO
TAHLEQUAH, OKLAHOMA

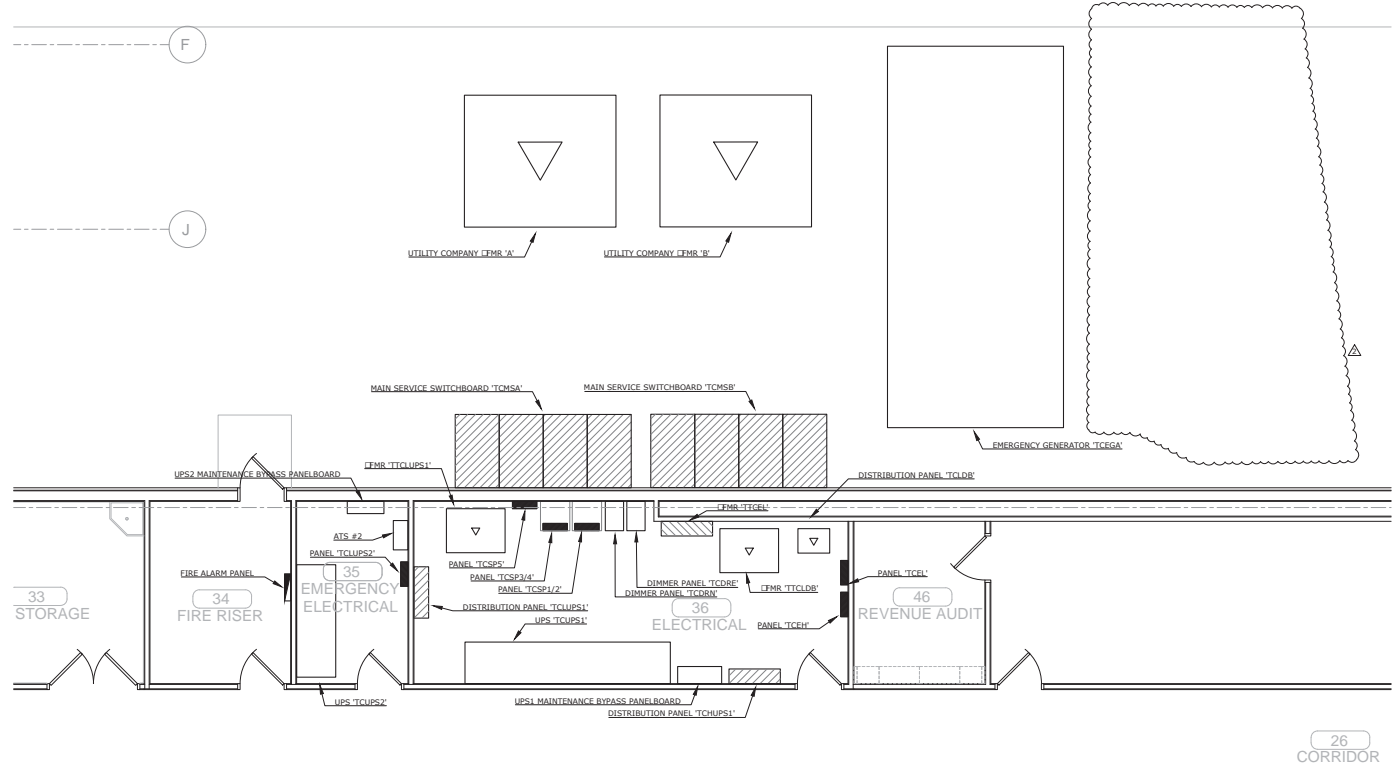
PROJECT NAME
BID PACKAGE 05

REVISIONS		
NO.	DATE	DESCRIPTION

DATE: 05/03/18 JOB NUMBER: 17-06

DRAWN BY: E1.6

POWER PLAN - ROOF



A ENLARGED ELECTRICAL ROOM PLAN
E3.1 1/4" = 1'-0"
 0' 1' 2' 4' 8'
 NORTH



James R. Childers
 Architect, Inc.
 44 South 4th Street
 Fort Smith, AR 72201
 479-783-3480
 www.childersarchitect.com



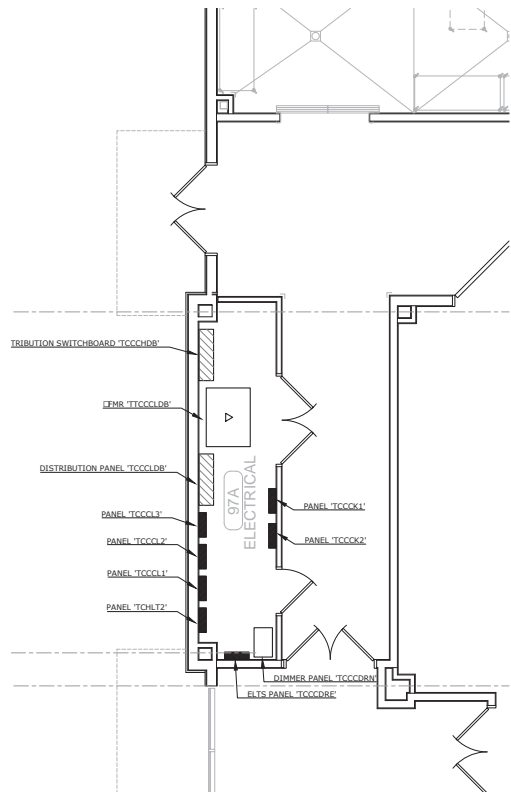
CHEROKEE NATION ENTERTAINMENT
 TAHLEQUAH CASINO
 TAHLEQUAH, OKLAHOMA

PROJECT NAME:
 BID PACKAGE 02
 (100% SET)

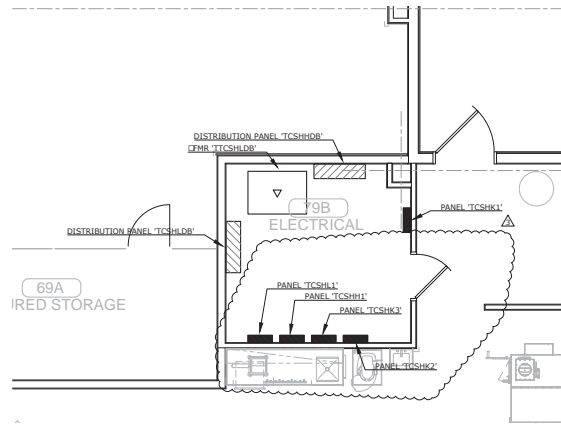
NO.	DATE	DESCRIPTION
1		
2		
3		
4		
5		
6		
7		
8		
9		
10		

DATE: 03/27/18 JOB NUMBER: 17-06

E3.1
 ENLARGED ELECTRICAL ROOM PLAN



A ENLARGED ELECTRICAL ROOM PLAN
 E3.2 1/4" = 1'-0"
 0 1' 2' 4' 8' NORTH



B ENLARGED ELECTRICAL ROOM PLAN
 E3.2 1/4" = 1'-0"
 0 1' 2' 4' 8' NORTH



**James R. Childers
 Architect, Inc.**
 46 South 4th Street
 Fort Smith, AR 72201
 479-783-3480
 www.childersarchitect.com



CHEROKEE NATION ENTERTAINMENT
 TAHLEQUAH CASINO
 TAHLEQUAH, OKLAHOMA

PROJECT NAME:
**BID PACKAGE 02
 (100% SET)**

NO.	DATE	DESCRIPTION
1	03/27/18	ISSUED FOR BIDDING
2		REVISED
3		REVISED
4		REVISED

DATE: 03/27/18 JOB NUMBER: 17-06

E3.2
 ENLARGED ELECTRICAL ROOM PLANS



**James R. Childers
Architect, Inc.**
45 South 4th Street
Fort Smith, AR 72201
479-783-3488
www.childersarchitect.com



CONSULTANT LOGO



CHEROKEE NATION ENTERTAINMENT
TAHLEQUAH CASINO
TAHLEQUAH, OKLAHOMA

PROJECT NAME
BID PACKAGE 05

NO.	DATE	DESCRIPTION
1		ISSUED FOR BIDDING
2		REVISION
3		REVISION
4		REVISION
5		REVISION

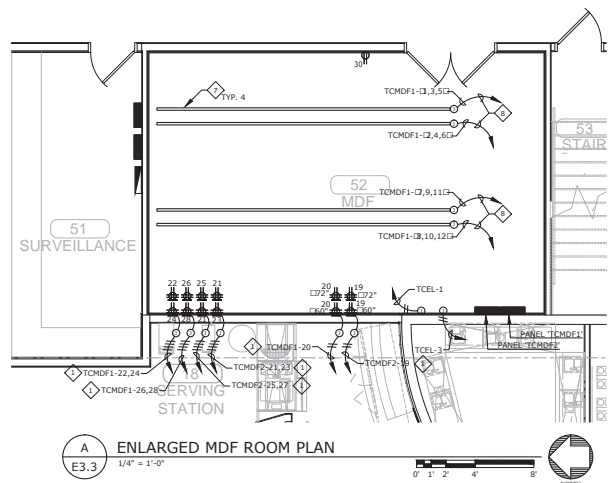
DATE: **05/03/18** JOB NUMBER: **17-06**

SHEET NUMBER:
E3.3

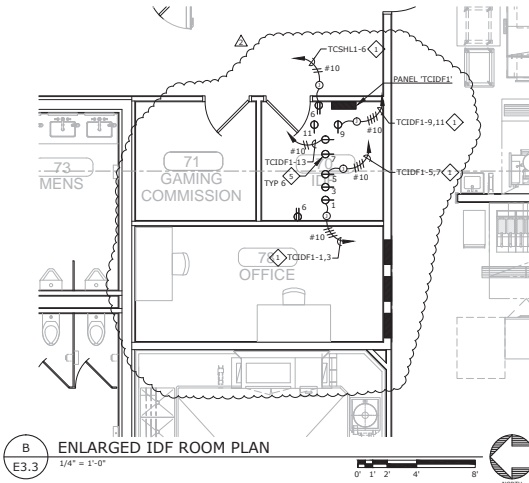
ENLARGED PLANS

SHEET NOTES

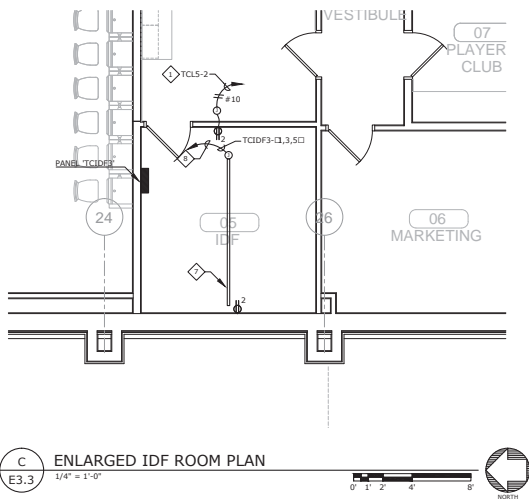
- ◇ EXTEND AND CONNECT CIRCUITING FROM JUNCTION BOX TO OUTLETS IN AREA WITH SAME CIRCUIT NUMBERS, ROUTE #12 CONDUCTORS THROUGHOUT, UNLESS NOTED OTHERWISE.
- ◇ NOTE DELETED.
- ◇ NOTE DELETED.
- ◇ NOTE DELETED.
- ◇ PROVIDE LS-30R RECEPTACLE. MOUNT BELOW RAISED FLOOR ABOVE GROUND ON SUPPORT. COORDINATE INSTALLATION LOCATION AND REQUIREMENTS WITH IT MANUFACTURERS PRIOR TO ROUGH-IN.
- ◇ NOTE DELETED.
- ◇ PROVIDE TRACK BUSWAY (STARLINE #B60-20-4 FOR MDF52, B60-ID-4 FOR IDF 05 AND B60-5-4 FOR IDF 27) PROVIDE ALL NECESSARY BUSWAY PARTS (SECTIONS, COUPLER, CONNECTORS, END CAPS, HANGERS, POWER FEED UNITS, ETC.) FOR A PROFESSIONAL INSTALLATION. SUPPORT BUSWAY FROM THE CEILING BY STANDARD HANGERS AS REQUIRED BY THE MANUFACTURER. COORDINATE BUSWAY LOCATION AND MOUNTING HEIGHT WITH THE LOW VOLTAGE CONTRACTOR PRIOR TO ROUGH-IN. COORDINATE THE TYPE AND NUMBER OF PLUG-IN UNITS WITH THE OWNER PRIOR TO ORDERING.
- ◇ 1 1/2" C - 3 #4, 1 #1N, 1 #8 GND, 1 #81 GND.



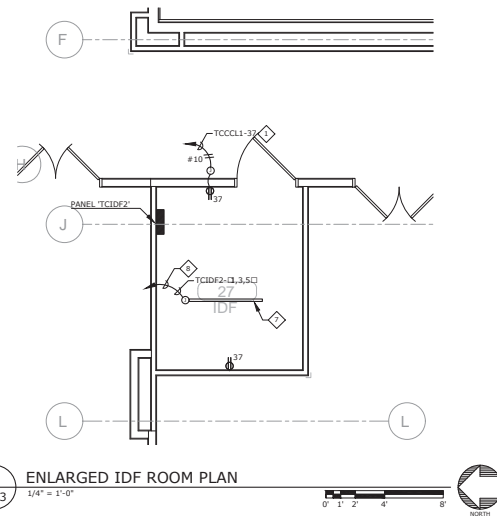
A ENLARGED MDF ROOM PLAN
E3.3 1/4" = 1'-0"
0 1 2 4 8 NORTH



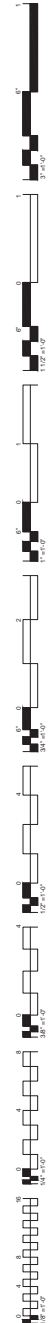
B ENLARGED IDF ROOM PLAN
E3.3 1/4" = 1'-0"
0 1 2 4 8 NORTH



C ENLARGED IDF ROOM PLAN
E3.3 1/4" = 1'-0"
0 1 2 4 8 NORTH



D ENLARGED IDF ROOM PLAN
E3.3 1/4" = 1'-0"
0 1 2 4 8 NORTH





- GENERAL NOTES**
- REFER TO SHEET E6.2 FOR LOCATION OF PANEL 'TCHLT1'.
 - PROVIDE CONSTANT HOT TO ALL LIGHT FIXTURES WITH INTEGRAL EMERGENCY BATTERY.
- SHEET NOTES**
- EXTEND AND CONNECT CIRCUITING FROM JUNCTION BOX TO OUTLETS IN AREA WITH SAME CIRCUIT NUMBERS, ROUTE #12 CONDUCTORS THROUGHOUT, UNLESS NOTED OTHERWISE.

**James R. Childers
Architect, Inc.**
45 South 4th Street
Fort Smith, AR 72001
479-783-3480
www.childersarchitect.com



CONSULTANT LOGO

msa
ENGINEERING CONSULTANTS
370 E Woodmill Lane, Suite 100
Las Vegas, NV 89123
702.896.1100
msa-nc.com
MSA#118041

CLIENT

CHEROKEE NATION
CHEROKEE CASINO

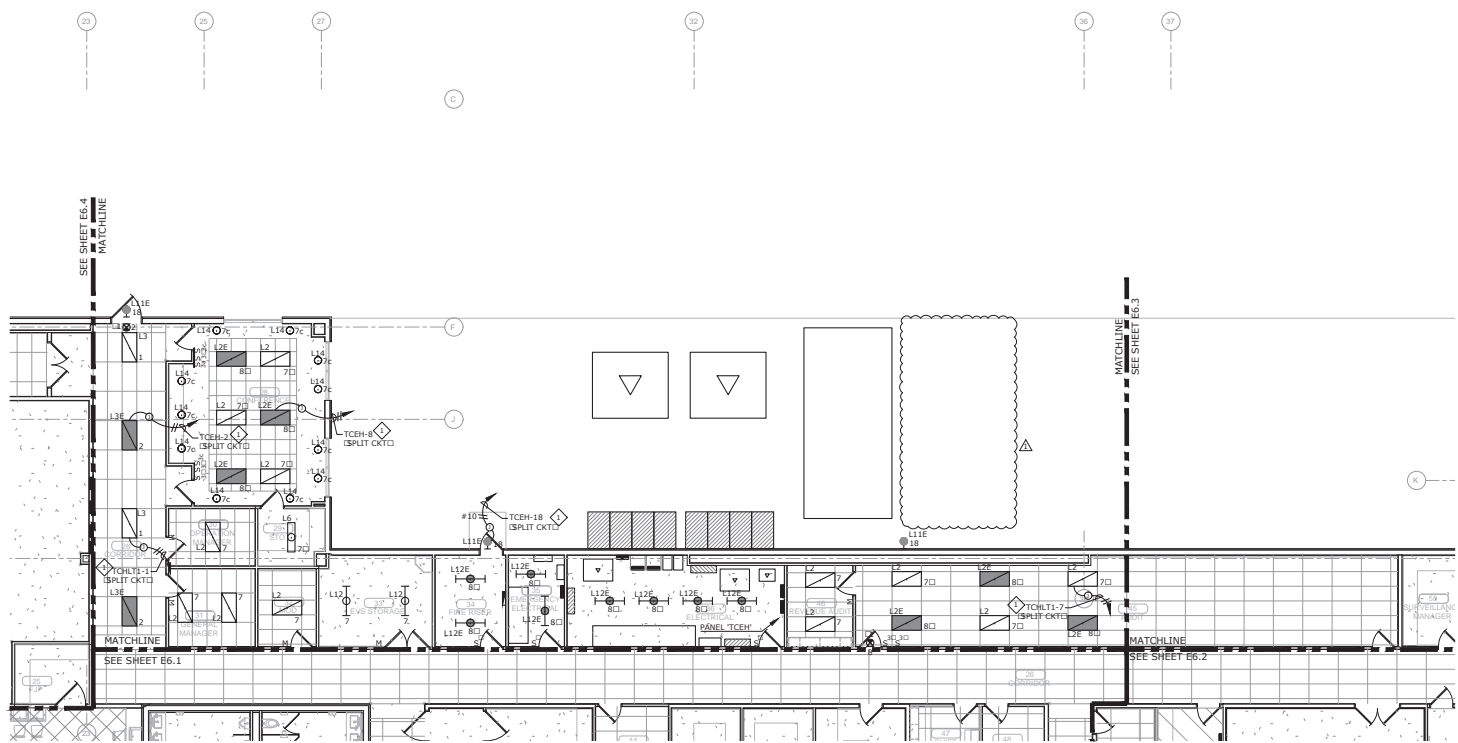
CHEROKEE NATION ENTERTAINMENT
TAHLEQUAH CASINO
TAHLEQUAH, OKLAHOMA

PROJECT NAME
BID PACKAGE 05

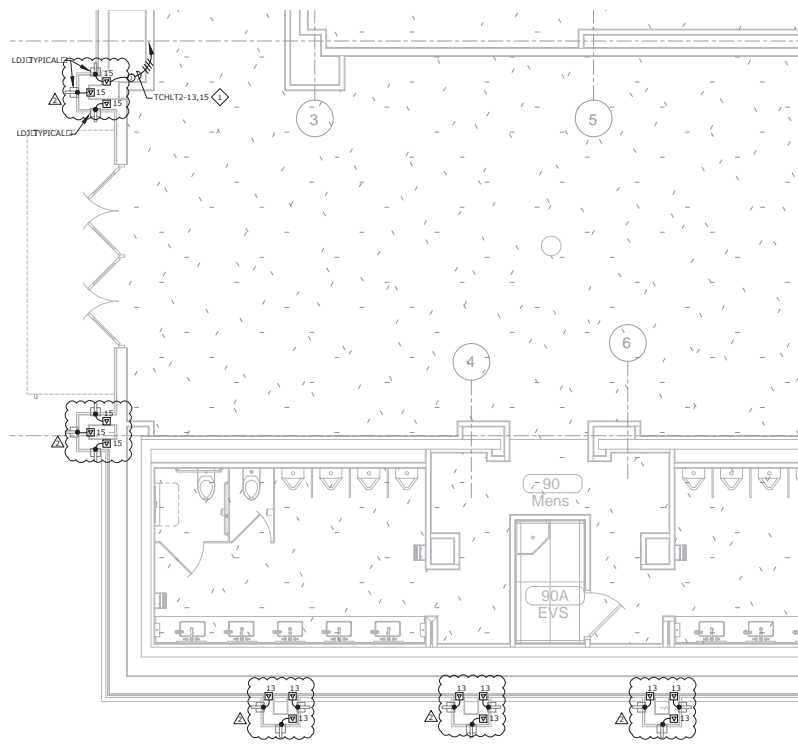
NO.	DATE	DESCRIPTION

DATE: 05/03/18 JOB NUMBER: 17-06
SHEET NUMBER:

E6.1A
ENLARGED LIGHTING
PLAN - EAST



A ENLARGED LIGHTING PLAN - EAST
E6.1A 1/8" = 1'-0"



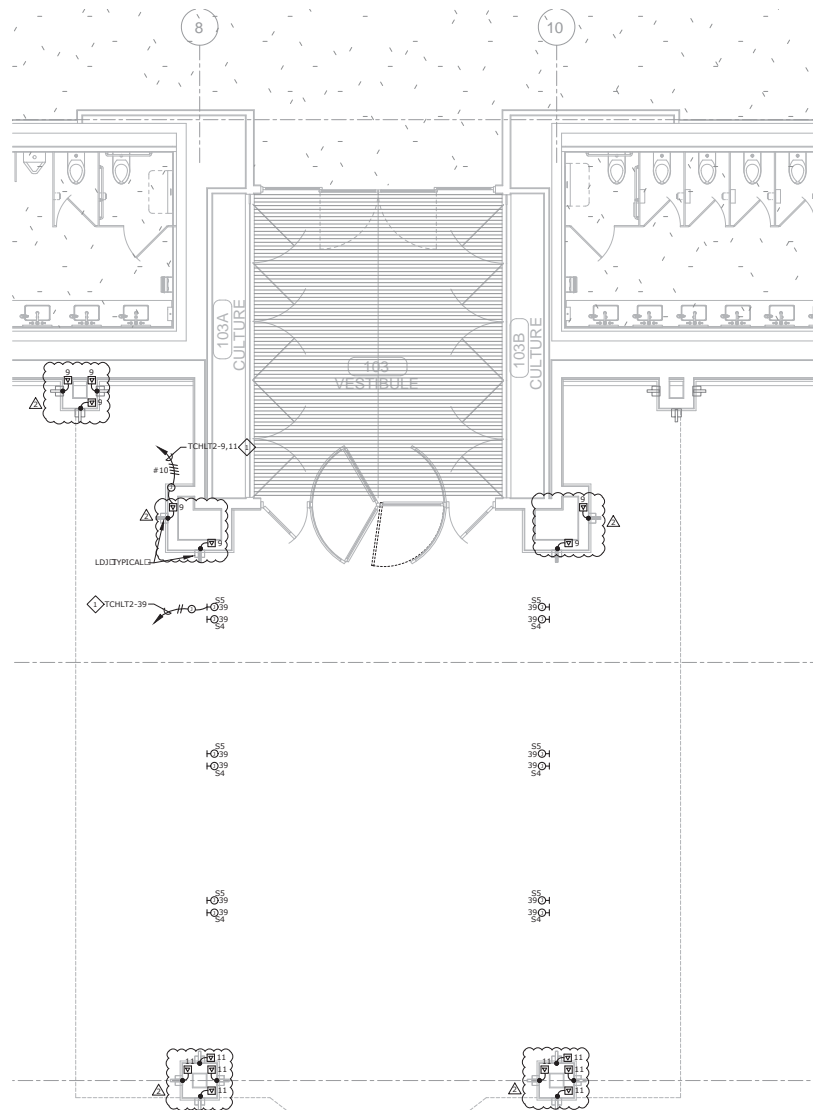
A ENLARGED EXTERIOR LIGHTING PLAN
 E7.1 1/4" = 1'-0"
 0 1 2 4 8' NORTH

GENERAL NOTES

1. REFER TO SHEET E1.0 FOR LOCATION OF PANEL 'TCHLT2'.

SHEET NOTES

◇ EXTEND AND CONNECT CIRCUITING FROM JUNCTION BOX TO OUTLETS IN AREA WITH SAME CIRCUIT NUMBERS. ROUTE #12 CONDUCTORS (MINIMUM) THROUGHOUT, UNLESS NOTED OTHERWISE.



B ENLARGED EXTERIOR LIGHTING PLAN
 E7.1 1/4" = 1'-0"
 0 1 2 4 8' NORTH

James R. Childers Architect, Inc.
 40 South 4th Street
 Fort Smith, AR 72501
 479-783-3488
 www.childersarchitect.com

CONSULTANT LOGO

msa
 ENGINEERING CONSULTANTS
 370 E Woodruff Lane, Suite 100
 Las Vegas, NV 89123
 702.696.1100
 msa-inc.com
 MSA#118041

CLIENT

CHEROKEE NATION
Cherokee CASINO

CHEROKEE NATION ENTERTAINMENT
 TAHLEQUAH CASINO
 TAHLEQUAH, OKLAHOMA

PROJECT FRAME
 BID PACKAGE 05

NO.	DATE	DESCRIPTION
1	05/03/18	ISSUED FOR BIDDING
2	05/03/18	REVISION #1
3	05/03/18	REVISION #2
4		
5		

DATE: 05/03/18 JOB NUMBER: 17-06

DRAWING NUMBER:
E7.1
 ENLARGED EXTERIOR LIGHTING PLAN

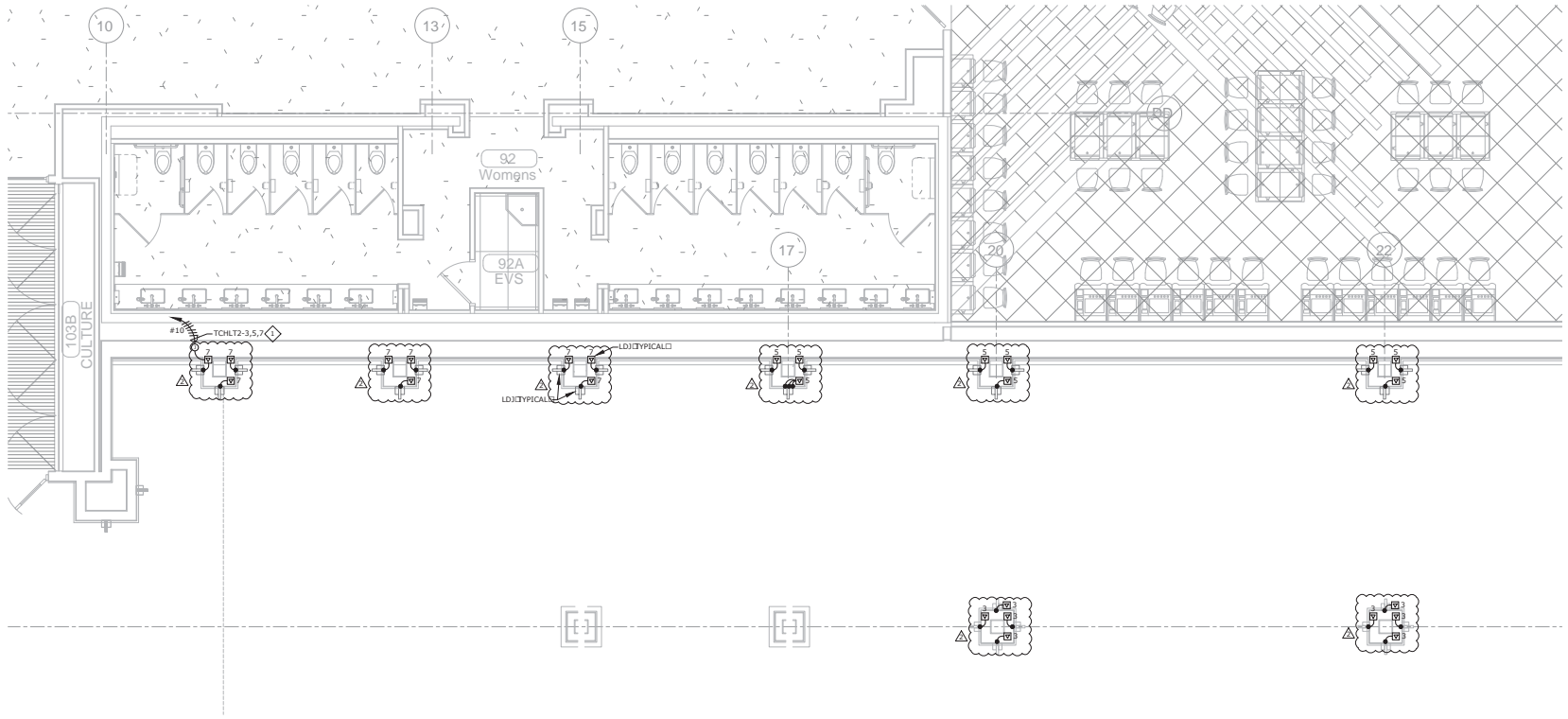


GENERAL NOTES

- REFER TO SHEET E1.0 FOR LOCATION OF PANEL 'TCHLT2'.

SHEET NOTES

◇ EXTEND AND CONNECT CIRCUITING FROM JUNCTION BOX TO OUTLETS IN AREA WITH SAME CIRCUIT NUMBERS. ROUTE #12 CONDUCTORS MINIMUM THROUGHOUT, UNLESS NOTED OTHERWISE.



A ENLARGED EXTERIOR LIGHTING PLAN
 E7.2 1/4" = 1'-0"

James R. Childers Architect, Inc.
 46 South 4th Street
 Fort Smith, AR 72201
 479-783-3488
 www.childersarchitect.com



CONSULTANT LOGO

msa
 ENGINEERING CONSULTANTS
 370 E Woodruff Lane, Suite 100
 Las Vegas, NV 89123
 702.896.1100
 msa@msa.com
 MSA#118041

CLIENT

CHEROKEE NATION
 CHEROKEE CASINO

**CHEROKEE NATION ENTERTAINMENT
 TAHLEQUAH CASINO**
 TAHLEQUAH, OKLAHOMA

PROJECT NAME
BID PACKAGE 05

REVISIONS		
#	DATE	DESCRIPTION

DATE: 05/03/18 JOB NUMBER: 17-06

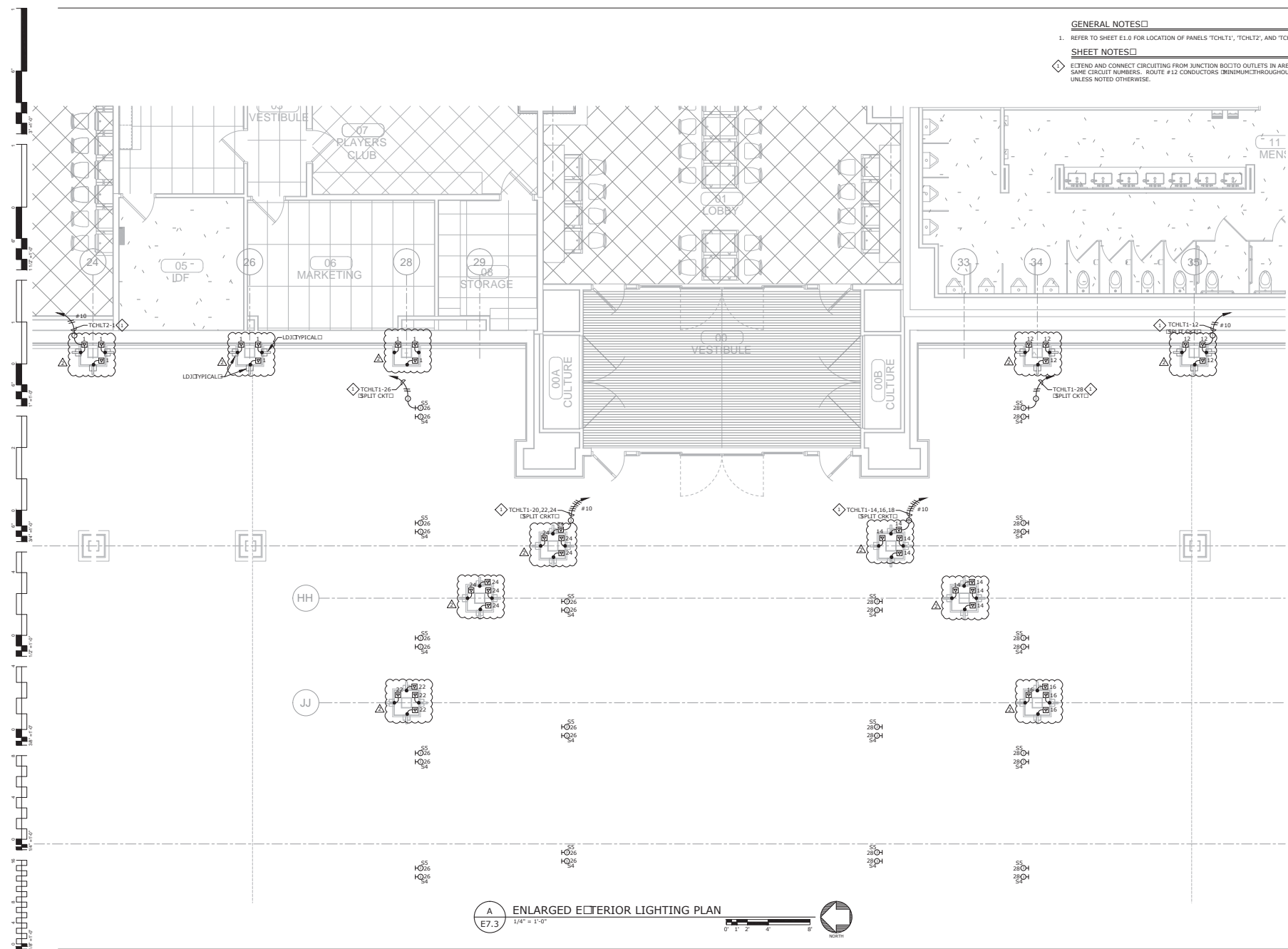
DRAWN BY: E7.2
 ENLARGED EXTERIOR LIGHTING PLAN

GENERAL NOTES

- REFER TO SHEET E1.0 FOR LOCATION OF PANELS 'TCHLT1', 'TCHLT2', AND 'TCHLT3'.

SHEET NOTES

◇ EXTEND AND CONNECT CIRCUITING FROM JUNCTION BOIC TO OUTLETS IN AREA WITH SAME CIRCUIT NUMBERS. ROUTE #12 CONDUCTORS (MINIMUM) THROUGHOUT, UNLESS NOTED OTHERWISE.



A ENLARGED EXTERIOR LIGHTING PLAN
 E7.3 1/4" = 1'-0"

James R. Childers Architect, Inc.
 45 South 4th Street
 Fort Smith, AR 72201
 479-783-3488
 www.childersarchitect.com



CONSULTANT LOGO

CLIENT

CHEROKEE NATION ENTERTAINMENT
 TAHLEQUAH CASINO
 TAHLEQUAH, OKLAHOMA

PROJECT NAME
 BID PACKAGE 05

NO.	DATE	DESCRIPTION
1		
2		
3		
4		
5		

DATE: 05/03/18 JOB NUMBER: 17-06

SHEET NUMBER:
 E7.3
 ENLARGED EXTERIOR LIGHTING PLAN

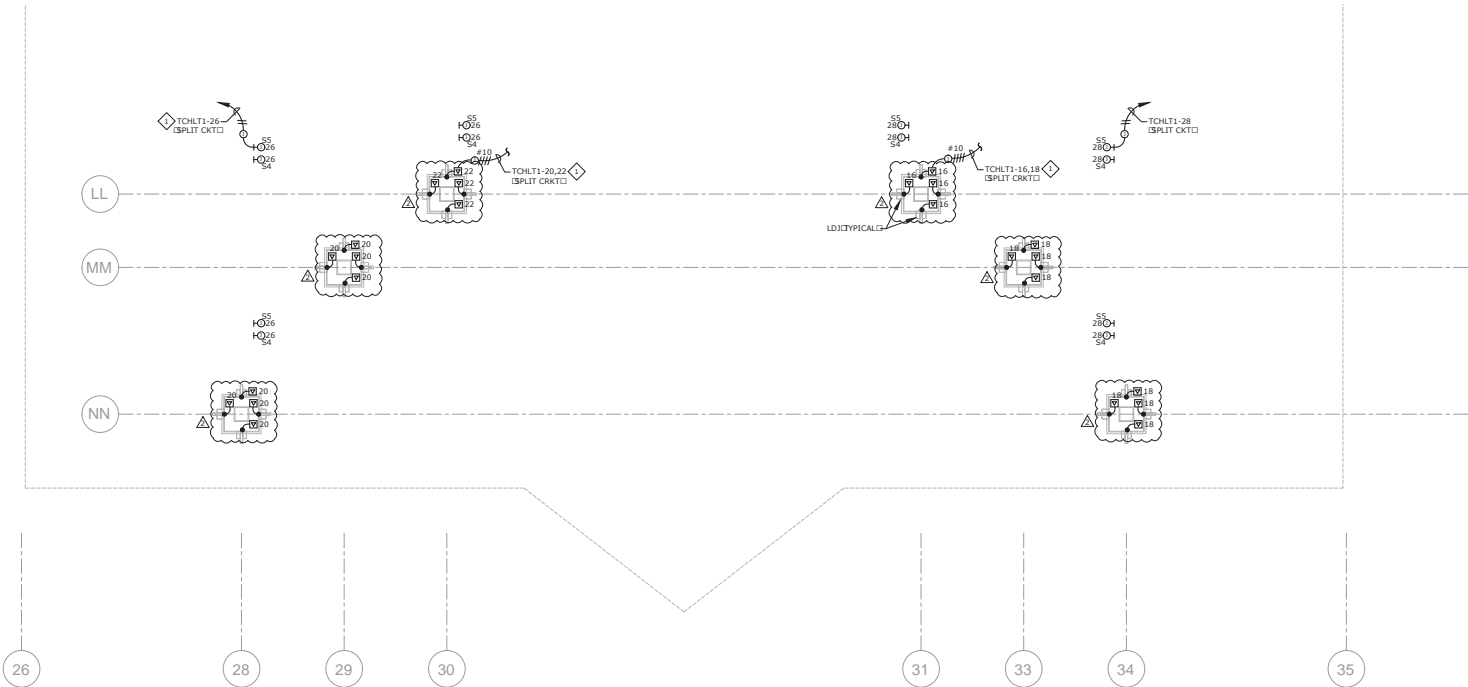


GENERAL NOTES

- REFER TO SHEET E1.0 FOR LOCATION OF PANELS 'TCHLT1' AND 'TCHLT3'.

SHEET NOTES

EXTEND AND CONNECT CIRCUITING FROM JUNCTION BOCK TO OUTLETS IN AREA WITH SAME CIRCUIT NUMBERS. ROUTE #12 CONDUCTORS (MINIMUM) THROUGHOUT, UNLESS NOTED OTHERWISE.



A ENLARGED EXTERIOR LIGHTING PLAN
E7.4 1/4" = 1'-0"



**James R. Childers
 Architect, Inc.**
 46 South 4th Street
 Fort Smith, AR 72201
 479-783-3480
 www.jrchildersarch.com



CONSULTANT LOGO

msa
 ENGINEERING CONSULTANTS
 370 E Woodruff Lane, Suite 100
 Las Vegas, NV 89123
 702.896.1100
 msa-nc.com
 MSA#188041

CLIENT

CHEROKEE NATION
 Entertainment
Cherokee
 CASINO

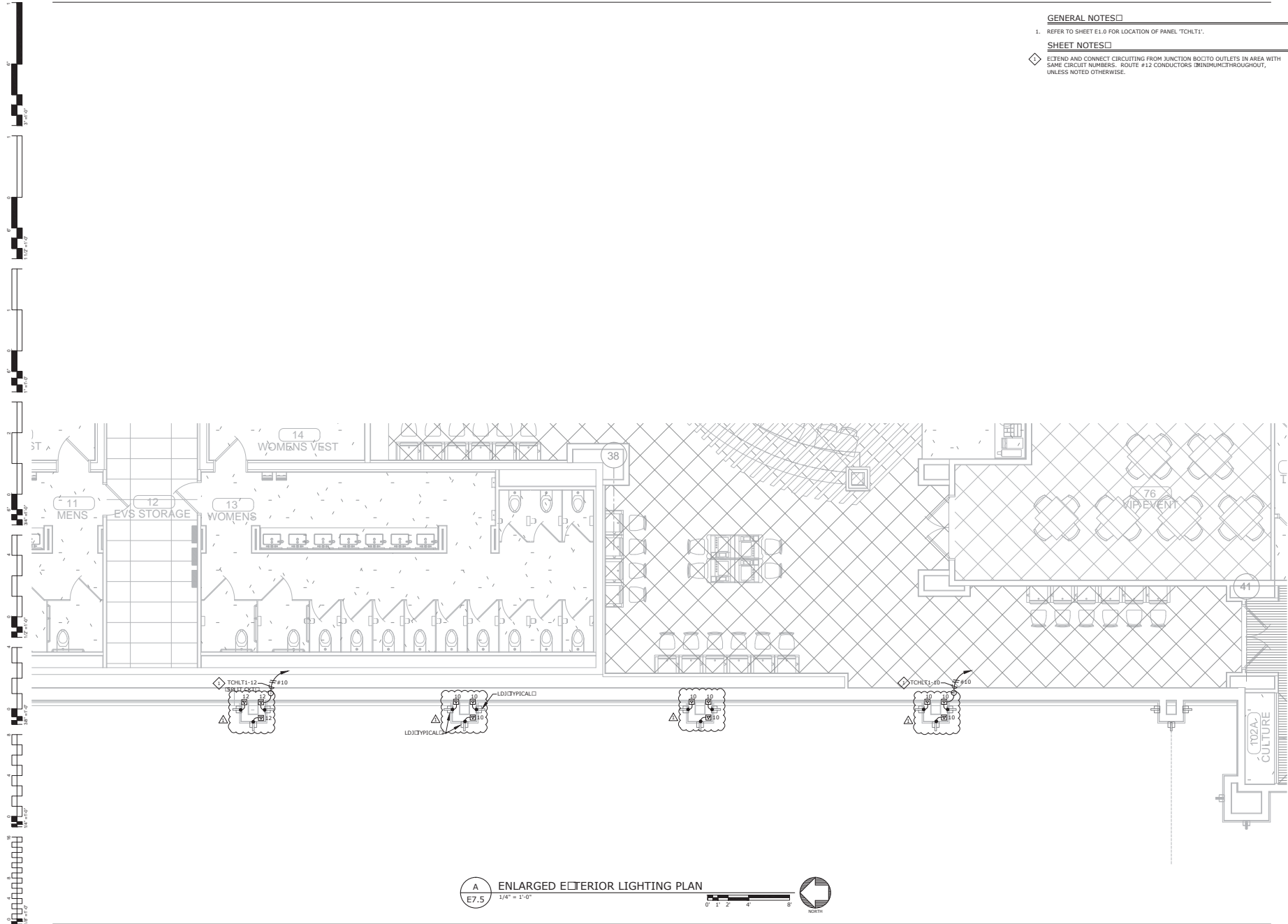
CHEROKEE NATION ENTERTAINMENT
 TAHLEQUAH CASINO
 TAHLEQUAH, OKLAHOMA

PROJECT FRAME
BID PACKAGE 05

REVISIONS	
NO.	DESCRIPTION

DATE: 05/03/18 JOB NUMBER: 17-06
 DRAWN BY: [blank]

E7.4
 ENLARGED EXTERIOR LIGHTING PLAN



GENERAL NOTES

1. REFER TO SHEET E1.0 FOR LOCATION OF PANEL TCHLT1.

SHEET NOTES

EXTEND AND CONNECT CIRCUITING FROM JUNCTION BOX TO OUTLETS IN AREA WITH SAME CIRCUIT NUMBERS. ROUTE #12 CONDUCTORS THROUGHOUT, UNLESS NOTED OTHERWISE.

A ENLARGED EXTERIOR LIGHTING PLAN
 E7.5 1/4" = 1'-0"
 0' 1' 2' 4' 8' NORTH



**James R. Childers
 Architect, Inc.**
 45 South 4th Street
 Fort Smith, AR 72201
 479-783-3488
 www.childersarch.com



CONSULTANT LOGO

msa
 ENGINEERING CONSULTANTS
 370 E Woodruff Lane, Suite 100
 Los Vegas, NV 89123
 702.896.1100
 msa-nc.com
 MSA#118041

CLIENT

CHEROKEE NATION
 Entertainment
Cherokee
 CASINO

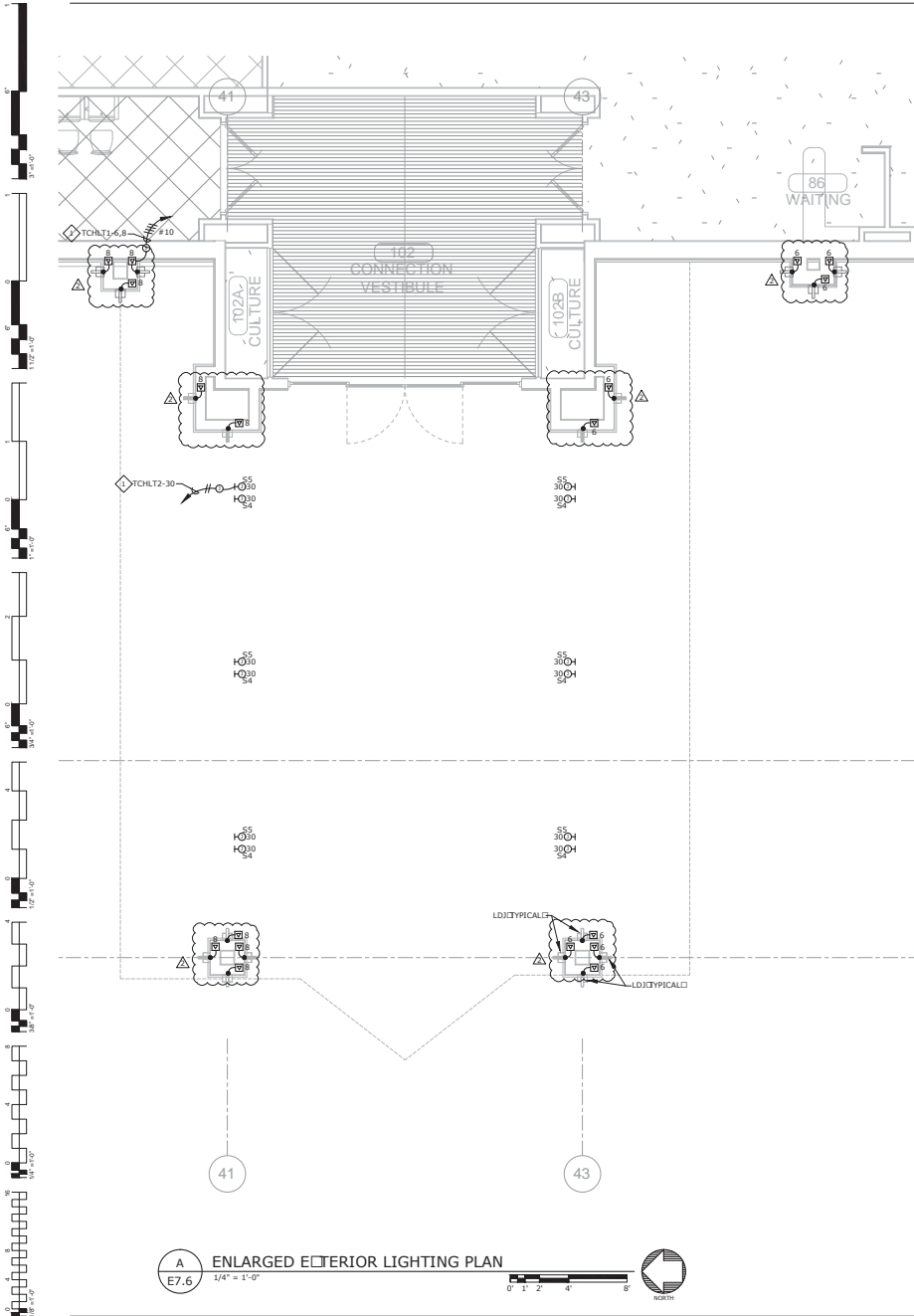
**CHEROKEE NATION ENTERTAINMENT
 TAHLEQUAH CASINO**
 TAHLEQUAH, OKLAHOMA

PROJECT NAME
BID PACKAGE 05

REV	DATE	DESCRIPTION

DATE: 05/03/18 JOB NUMBER: 17-06

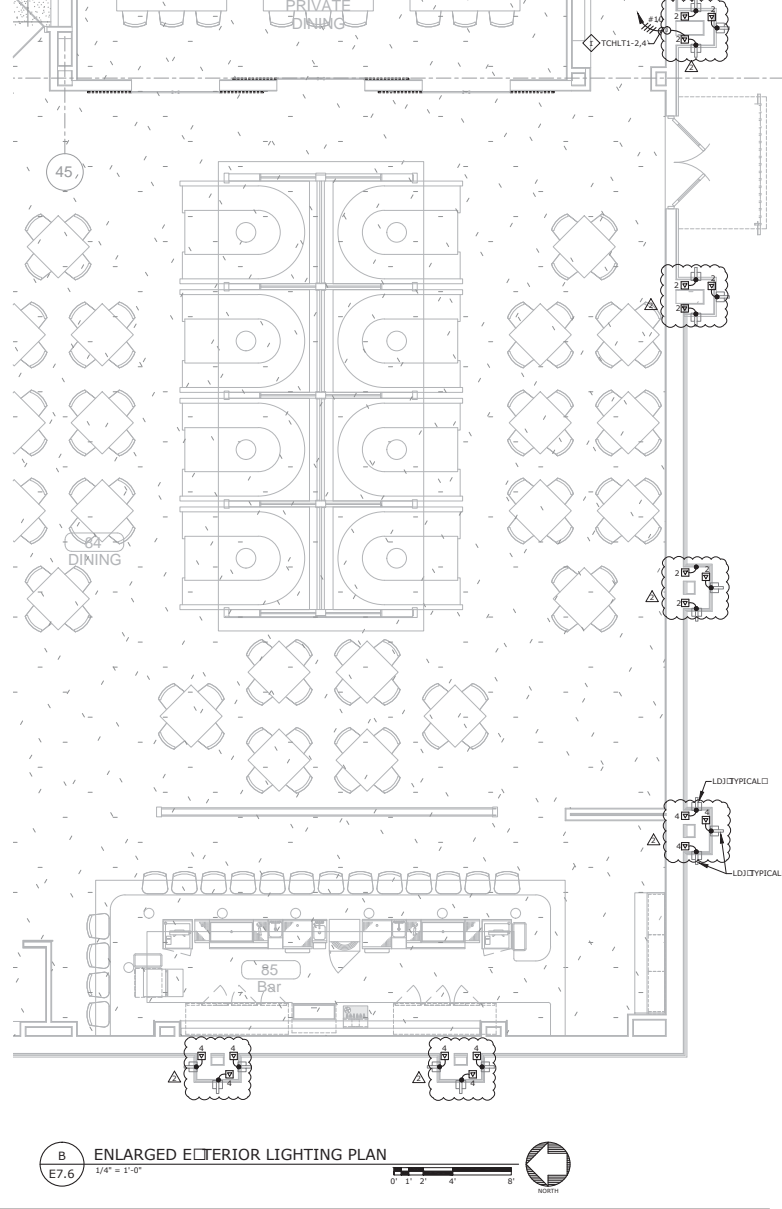
SHEET NUMBER:
E7.5
 ENLARGED EXTERIOR LIGHTING PLAN



A ENLARGED EXTERIOR LIGHTING PLAN
E7.6 1/4" = 1'-0"

GENERAL NOTES
1. REFER TO SHEET E1.0 FOR LOCATION OF PANEL 'TCHLT1' AND 'TCHLT2'.

SHEET NOTES
◇ EXTEND AND CONNECT CIRCUITING FROM JUNCTION BOX TO OUTLETS IN AREA WITH SAME CIRCUIT NUMBERS. ROUTE #12 CONDUCTORS (MINIMUM) THROUGHOUT, UNLESS NOTED OTHERWISE.



B ENLARGED EXTERIOR LIGHTING PLAN
E7.6 1/4" = 1'-0"



**James R. Childers
Architect, Inc.**
48 South 4th Street
Fort Smith, AR 72501
479-783-3466
www.childersarchitect.com



CONSULTANT LOGO

msa
ENGINEERING CONSULTANTS
370 E Windsor Lane, Suite 100
Las Vegas, NV 89123
702.896.1100
msa-ar.com
MSA#118041

CLIENT

CHEROKEE NATION
Entertainment

Cherokee
CASINO

**CHEROKEE NATION ENTERTAINMENT
TAHLEQUAH CASINO**
TAHLEQUAH, OKLAHOMA

PROJECT NAME
BID PACKAGE 05

NO.	DATE	DESCRIPTION
1		
2		
3		
4		
5		

DATE: 05/03/18 JOB NUMBER: 17-06

SHEET NUMBER: E7.6

ENLARGED EXTERIOR LIGHTING PLAN

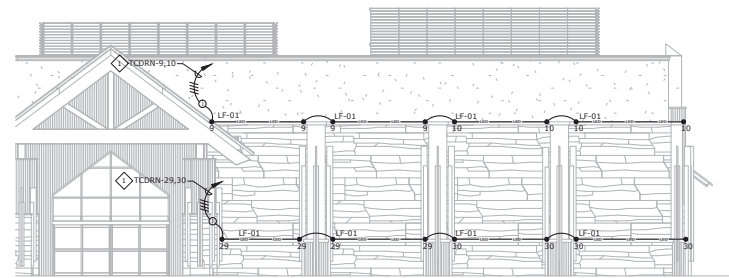
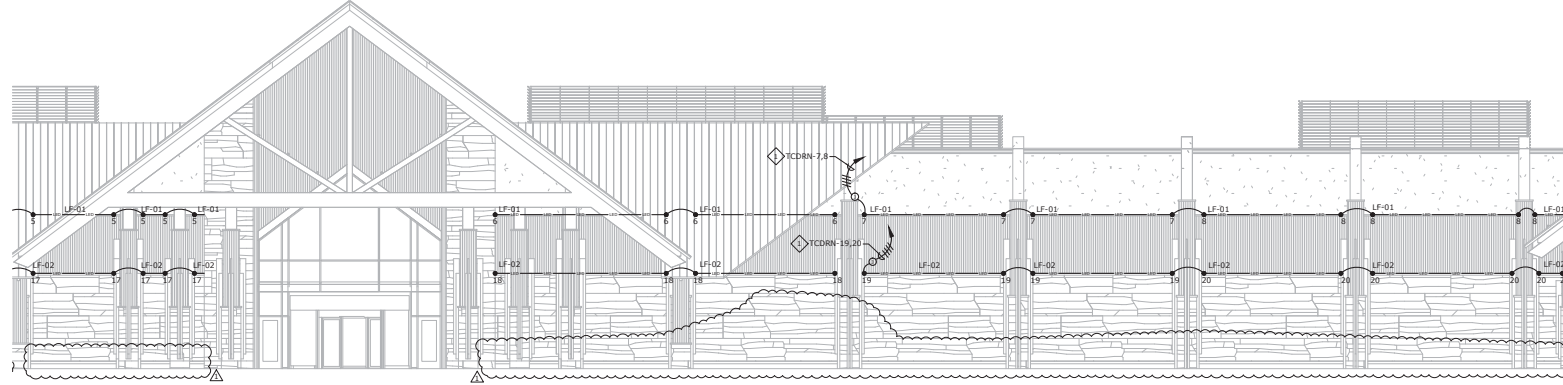
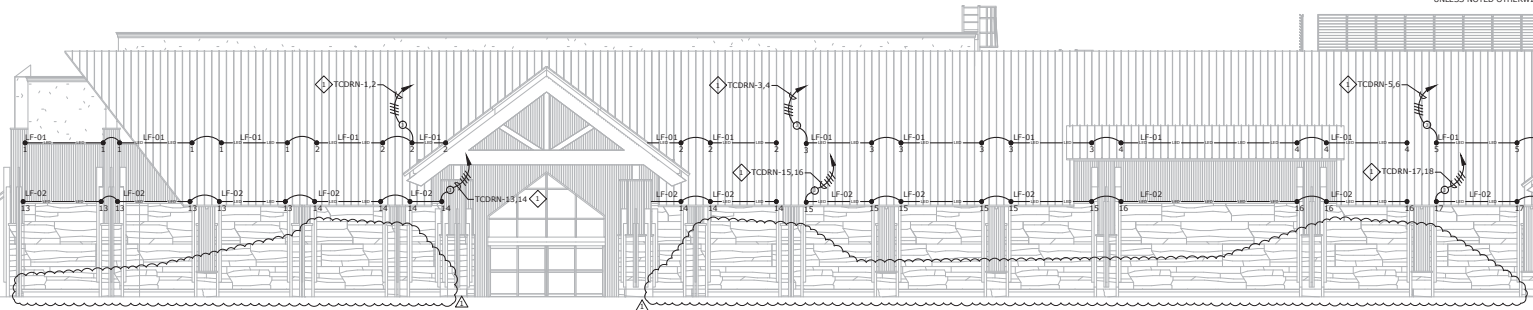
1
2
3
4
5
6
7
8
9
10
11
12
13
14
15
16
17
18
19
20
21
22
23
24
25
26
27
28
29
30
31
32
33
34
35
36
37
38
39
40
41
42
43
44
45
46
47
48
49
50
51
52
53
54
55
56
57
58
59
60
61
62
63
64
65
66
67
68
69
70
71
72
73
74
75
76
77
78
79
80
81
82
83
84
85
86
87
88
89
90
91
92
93
94
95
96
97
98
99
100

GENERAL NOTES

1. VERIFY EXACT LOCATION OF ALL LIGHT FIXTURES WITH ARCHITECT PRIOR TO ROUGH-IN.
2. REFER TO SHEET E111 FOR LOCATION OF DIMMER PANEL TCDRN.

SHEET NOTES

- ◇ EXTEND AND CONNECT CIRCUITING FROM JUNCTION BOX TO OUTLETS IN AREA WITH SAME CIRCUIT NUMBERS. ROUTE #12 CONDUCTORS (MINIMUM) THROUGHOUT, UNLESS NOTED OTHERWISE.



A ELECTRICAL ELEVATION WEST
E7.7



**James R. Childers
Architect, Inc.**
46 South 4th Street
Fort Smith, AR 72001
479-783-3460
479-783-3461
www.childersarchitect.com



CHEROKEE NATION ENTERTAINMENT
TALHEQUAH CASINO
 TALHEQUAH, OKLAHOMA

BID PACKAGE 05

NO.	DATE	DESCRIPTION

DATE: 05/03/18 JOB NUMBER: 17-06

E7.7

ELECTRICAL ELEVATION WEST

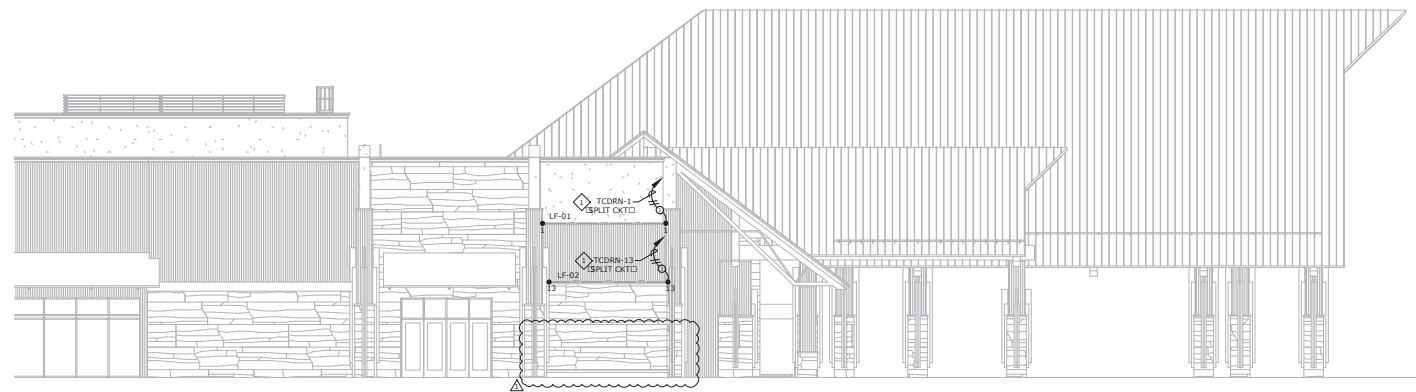


GENERAL NOTES

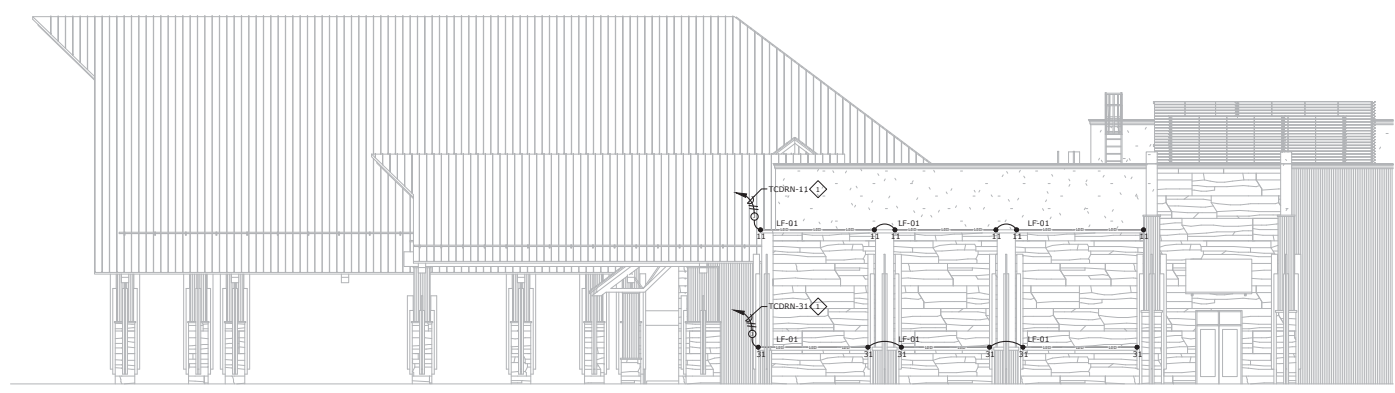
1. VERIFY EXACT LOCATION OF ALL LIGHT FIXTURES WITH ARCHITECT PRIOR TO ROUGH-IN.
2. REFER TO SHEET [] FOR LOCATION OF DIMMER PANEL 'TCDRV'.

SHEET NOTES

- ◇ EXTEND AND CONNECT CIRCUITING FROM JUNCTION BOX TO OUTLETS IN AREA WITH SAME CIRCUIT NUMBERS. ROUTE #12 CONDUCTORS THROUGHOUT, UNLESS NOTED OTHERWISE.



A ELECTRICAL ELEVATION NORTH
E7.8 1/8" = 1'-0"
 0' 2' 4' 8' 16'



A ELECTRICAL ELEVATION SOUTH
E7.8 1/8" = 1'-0"
 0' 2' 4' 8' 16'

**James R. Childers
 Architect, Inc.**
 46 South 4th Street
 Fort Smith, AR 72501
 479-783-3480
 www.childersarchitect.com

PROFESSIONAL SEAL

CONSULTANT LOGO

370 E Woodruff Lane, Suite 100
 Las Vegas, NV 89123
 702.896.1100
 msa@msa.com
 MSA#118041

CLIENT

CHEROKEE NATION
 ENTERTAINMENT

Cherokee
 CASINO

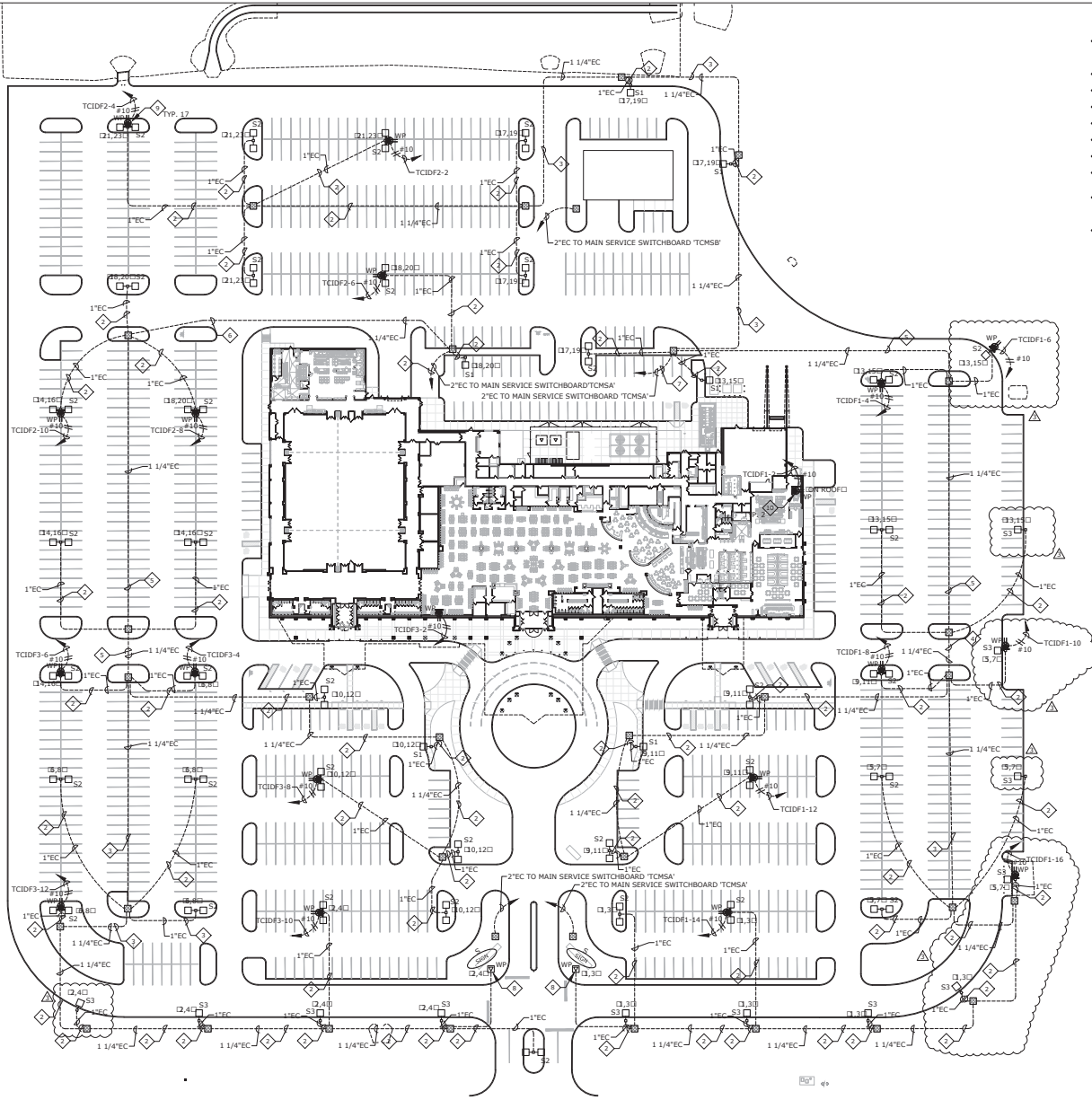
CHEROKEE NATION ENTERTAINMENT
 TAHLEQUAH CASINO
 TAHLEQUAH, OKLAHOMA

PROJECT NAME
BID PACKAGE 05

NO.	DATE	DESCRIPTION

DATE: **05/03/18** JOB NUMBER: **17-06**

DRAWN BY: **E7.8**
 ELECTRICAL ELEVATIONS NORTH AND SOUTH



- SHEET NOTES**
- ◇ EXTEND AND CONNECT CIRCUITING FROM JUNCTION BOX TO OUTLETS IN AREA WITH SAME CIRCUIT NUMBERS, ROUTE #12 CONDUCTORS THROUGHOUT, UNLESS NOTED OTHERWISE.
 - ◇ 2#8, 1#8 GND IN EXISTING CONDUIT.
 - ◇ 4#8, 1#8 GND IN EXISTING CONDUIT.
 - ◇ 6#8, 1#8 GND IN EXISTING CONDUIT.
 - ◇ 8#8, 1#8 GND IN EXISTING CONDUIT.
 - ◇ 10#8, 1#8 GND IN EXISTING CONDUIT.
 - ◇ 12#8, 1#8 GND IN EXISTING CONDUIT.
 - ◇ FURNISH AND INSTALL 750 VA, 480V, 1φ TO 120V, 1φ ENCAPSULATED TRANSFORMER WITH LINE AND LOAD IN-LINE FUSES IN WEATHERPROOF BOX.
 - ◇ FURNISH AND INSTALL WEATHERPROOF GFCI RECEPTACLE FOR OUTDOOR SPEAKER AT INDICATED LIGHT POLES. COORDINATE RECEPTACLE MOUNTING HEIGHT AND INSTALLATION REQUIREMENTS WITH THE AV CONTRACTOR PRIOR TO ROUGH-IN.
 - ◇ FURNISH AND INSTALL WEATHERPROOF GFCI RECEPTACLE ON THE ROOF NEAR THE EDGE OF THE BUILDING FOR AUDIO SYSTEM TRANSMITTER, COORDINATE RECEPTACLE MOUNTING LOCATION AND INSTALLATION REQUIREMENTS WITH THE AV CONTRACTOR PRIOR TO ROUGH-IN.

A ELECTRICAL SITE PLAN
 ES1.0 1" = 50'-0"
 0 25 50 100
 NORTH



**James R. Childers
 Architect, Inc.**
 48 South 4th Street
 Fort Smith, AR 72201
 479-783-3481
 www.childersarchitect.com



CONSULTANT LOGO

msa
 ENGINEERING CONSULTANTS
 370 E Woodruff Lane, Suite 100
 Las Vegas, NV 89123
 702.896.1100
 msa@msa.com
 MSA#118041

CLIENT

CHEROKEE NATION
 ENTERTAINMENT
Cherokee
 CASINO

CHEROKEE NATION ENTERTAINMENT
 TAHLEQUAH CASINO
 TAHLEQUAH, OKLAHOMA

PROJECT NAME
BID PACKAGE 02
 (100% SET)

NO.	DATE	DESCRIPTION
1	03/27/18	ISSUED FOR BIDDING
2	03/27/18	PROCEEDING #11
3	03/27/18	PROCEEDING #12
4	03/27/18	PROCEEDING #13
5	03/27/18	PROCEEDING #14
6	03/27/18	PROCEEDING #15
7	03/27/18	PROCEEDING #16
8	03/27/18	PROCEEDING #17
9	03/27/18	PROCEEDING #18
10	03/27/18	PROCEEDING #19
11	03/27/18	PROCEEDING #20
12	03/27/18	PROCEEDING #21
13	03/27/18	PROCEEDING #22
14	03/27/18	PROCEEDING #23
15	03/27/18	PROCEEDING #24
16	03/27/18	PROCEEDING #25
17	03/27/18	PROCEEDING #26
18	03/27/18	PROCEEDING #27
19	03/27/18	PROCEEDING #28
20	03/27/18	PROCEEDING #29
21	03/27/18	PROCEEDING #30
22	03/27/18	PROCEEDING #31
23	03/27/18	PROCEEDING #32
24	03/27/18	PROCEEDING #33
25	03/27/18	PROCEEDING #34
26	03/27/18	PROCEEDING #35
27	03/27/18	PROCEEDING #36
28	03/27/18	PROCEEDING #37
29	03/27/18	PROCEEDING #38
30	03/27/18	PROCEEDING #39
31	03/27/18	PROCEEDING #40
32	03/27/18	PROCEEDING #41
33	03/27/18	PROCEEDING #42
34	03/27/18	PROCEEDING #43
35	03/27/18	PROCEEDING #44
36	03/27/18	PROCEEDING #45
37	03/27/18	PROCEEDING #46
38	03/27/18	PROCEEDING #47
39	03/27/18	PROCEEDING #48
40	03/27/18	PROCEEDING #49
41	03/27/18	PROCEEDING #50
42	03/27/18	PROCEEDING #51
43	03/27/18	PROCEEDING #52
44	03/27/18	PROCEEDING #53
45	03/27/18	PROCEEDING #54
46	03/27/18	PROCEEDING #55
47	03/27/18	PROCEEDING #56
48	03/27/18	PROCEEDING #57
49	03/27/18	PROCEEDING #58
50	03/27/18	PROCEEDING #59
51	03/27/18	PROCEEDING #60
52	03/27/18	PROCEEDING #61
53	03/27/18	PROCEEDING #62
54	03/27/18	PROCEEDING #63
55	03/27/18	PROCEEDING #64
56	03/27/18	PROCEEDING #65
57	03/27/18	PROCEEDING #66
58	03/27/18	PROCEEDING #67
59	03/27/18	PROCEEDING #68
60	03/27/18	PROCEEDING #69
61	03/27/18	PROCEEDING #70
62	03/27/18	PROCEEDING #71
63	03/27/18	PROCEEDING #72
64	03/27/18	PROCEEDING #73
65	03/27/18	PROCEEDING #74
66	03/27/18	PROCEEDING #75
67	03/27/18	PROCEEDING #76
68	03/27/18	PROCEEDING #77
69	03/27/18	PROCEEDING #78
70	03/27/18	PROCEEDING #79
71	03/27/18	PROCEEDING #80
72	03/27/18	PROCEEDING #81
73	03/27/18	PROCEEDING #82
74	03/27/18	PROCEEDING #83
75	03/27/18	PROCEEDING #84
76	03/27/18	PROCEEDING #85
77	03/27/18	PROCEEDING #86
78	03/27/18	PROCEEDING #87
79	03/27/18	PROCEEDING #88
80	03/27/18	PROCEEDING #89
81	03/27/18	PROCEEDING #90
82	03/27/18	PROCEEDING #91
83	03/27/18	PROCEEDING #92
84	03/27/18	PROCEEDING #93
85	03/27/18	PROCEEDING #94
86	03/27/18	PROCEEDING #95
87	03/27/18	PROCEEDING #96
88	03/27/18	PROCEEDING #97
89	03/27/18	PROCEEDING #98
90	03/27/18	PROCEEDING #99
91	03/27/18	PROCEEDING #100

DATE: 03/27/18 JOB NUMBER: 17-06

SHEET NUMBER: ES1.0

ELECTRICAL SITE PLAN



**James R. Childers
Architect, Inc.**
46 South 4th Street
Fort Smith, AR 72201
479-783-3488
www.childersarchitect.com



CONSULTANT LOGO

msa
ENGINEERING CONSULTANTS
370 E Woodruff Lane, Suite 100
Las Vegas, NV 89123
702.896.1100
msa@msa.com
MSA#118041

CLIENT

Cherokee
CASINO

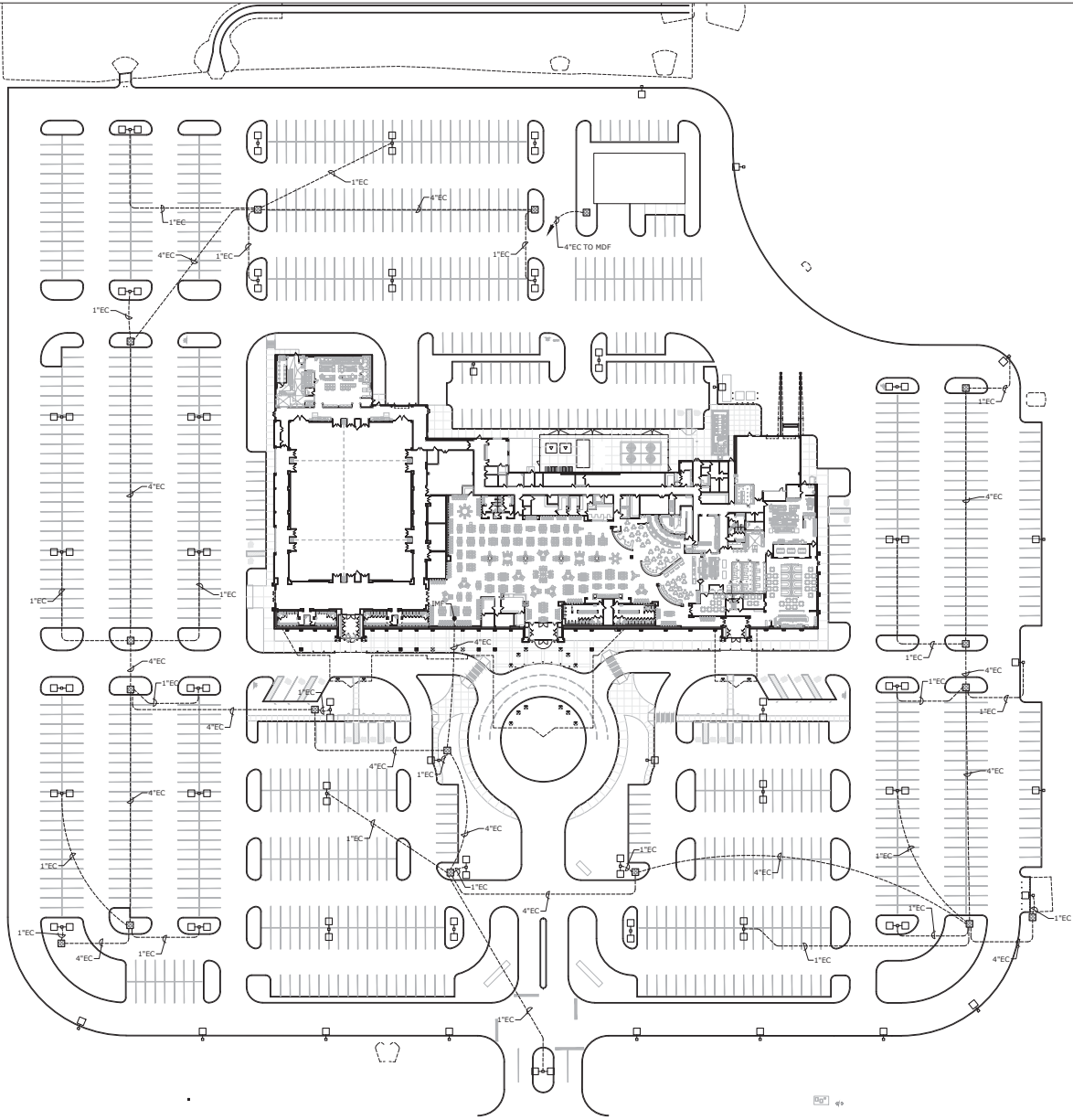
CHEROKEE NATION ENTERTAINMENT
TAHLEQUAH CASINO
TAHLEQUAH, OKLAHOMA

PROJECT FRAME
BID PACKAGE 02
(100% SET)

NO.	DATE	DESCRIPTION
1	03/27/18	ISSUED FOR BIDDING
2	03/27/18	REVISION #1

DATE: 03/27/18 JOB NUMBER: 17-06

ES1.0A
ELECTRICAL SITE
PLAN - CCTV
INFRASTRUCTURE



A ELECTRICAL SITE PLAN - CCTV INFRASTRUCTURE
ES1.0A 1" = 50'-0"

REVISOR
ENTIRE SHEET

