

Tahlequah Casino Addendum 17

Date: July 20, 2018

Electrical

<u>Sheets</u>	<u>Description</u>
E0.0	Updated drawing index.
E0.10	Revised single line diagram as indicated.
E0.11	Revised single line diagram as indicated.
E0.12	Revised single line diagram as indicated.
E0.13	Revised single line diagram as indicated.
E0.14	Revised single line diagram as indicated.
E0.15	Revised single line diagram as indicated.
E0.20	Revised panel schedules as indicated.
E0.21	Revised panel schedules as indicated.
E0.23	Revised panel schedules as indicated.
E0.24	Revised entire sheet.
E0.25	Revised panel schedules as indicated.
E.026	Revised panel schedule as indicated.
E0.30	Revised dimmer panel schedules as indicated.
E0.31	Revised dimmer panel schedules as indicated. Added Sheet Note 1 as indicated.
E0.41	Revised lighting fixture schedule as indicated.
ES1.0	Added underground primary electrical conduit as indicated.
E1.0	Relocated/deleted electrical equipment and equipment callouts as indicated.
E1.1	Added/deleted/relocated outlets and circuiting as indicated based on owner AV review.
E1.2	Added/deleted/relocated outlets and circuiting as indicated. Added sheet notes as indicated.
E1.2M	Added/deleted/relocated electrical equipment as indicated.
E1.3	Added/deleted/relocated electrical equipment as indicated.

- E1.3M Added/deleted/relocated electrical equipment as indicated.
- E1.4 Deleted outlets and circuiting as indicated.
- E1.5 Revised sheet notes as indicated.
- E1.6 Added deleted/relocated electrical connections to mechanical equipment based on mechanical design coordination. Added Sheet Note 3 as indicated.
- E6.1 Added/deleted/relocated light fixtures, switches and circuiting based on updated architectural backgrounds.
- E6.2 Revised entire sheet.
- E6.3 Revised architectural background.
- E6.4 Added/deleted/relocated light fixtures, switches and circuiting based on updated architectural backgrounds. Deleted dimmer system control stations as indicated based on update architectural backgrounds.
- E6.5 Added/deleted/relocated light fixtures, switches and circuiting based on updated architectural backgrounds. Deleted dimmer system control stations as indicated based on update architectural backgrounds.
- EFS120 Added/deleted/revised electrical connections and circuiting for food service equipment based on food service consultant coordination. Added Sheet Note 2 as indicated.
- EFS121 Added/deleted/revised electrical connections and circuiting for food service equipment based on food service consultant coordination.
- EFS122 Deleted light fixtures and circuiting based on owner accepted VE.
- EFS123 Revised entire sheet.
- EFS124 Added/deleted/revised electrical connections and circuiting for food service equipment based on food service consultant coordination.



CHEROKEE NATION ENTERTAINMENT
TAHLEQUAH CASINO
TAHLEQUAH, OKLAHOMA

BID PACKAGE 02 (100% SET)

Table with 4 columns: Item #, Description, Quantity, Unit.

DWG NO: 0327718
DATE: 11-06
PROJECT: E0.0

SYMBOL LIST

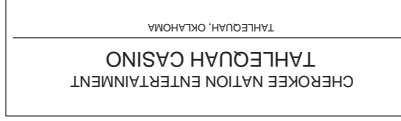
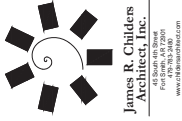
ELECTRICAL SYMBOL LIST

NOTE: THIS IS A MASTER SCHEDULE. NOT ALL SYMBOLS AND/OR ABBREVIATIONS CONTAINED HEREIN MAY APPEAR ON THE DRAWINGS.

Comprehensive list of electrical symbols and their meanings, including switches, outlets, lighting fixtures, and various electrical components with their standard abbreviations and symbols.

DRAWING INDEX

Table listing drawing sheets with columns: SHEET NUMBER, SHEET TITLE, BLD PACKAGE 02 (100% SET), BLD DATE, BLD PACKAGE 02 (100% SET), BLD DATE, BLD PACKAGE 02 (100% SET), BLD DATE, BLD PACKAGE 02 (100% SET), BLD DATE.



PROJ. NO.: BID PACKAGE 02 (100% SET)

NO.	DATE	REVISION
1		ISSUED FOR BIDDING
2		REVISED PER COMMENTS
3		REVISED PER COMMENTS
4		REVISED PER COMMENTS
5		REVISED PER COMMENTS
6		REVISED PER COMMENTS
7		REVISED PER COMMENTS
8		REVISED PER COMMENTS
9		REVISED PER COMMENTS
10		REVISED PER COMMENTS

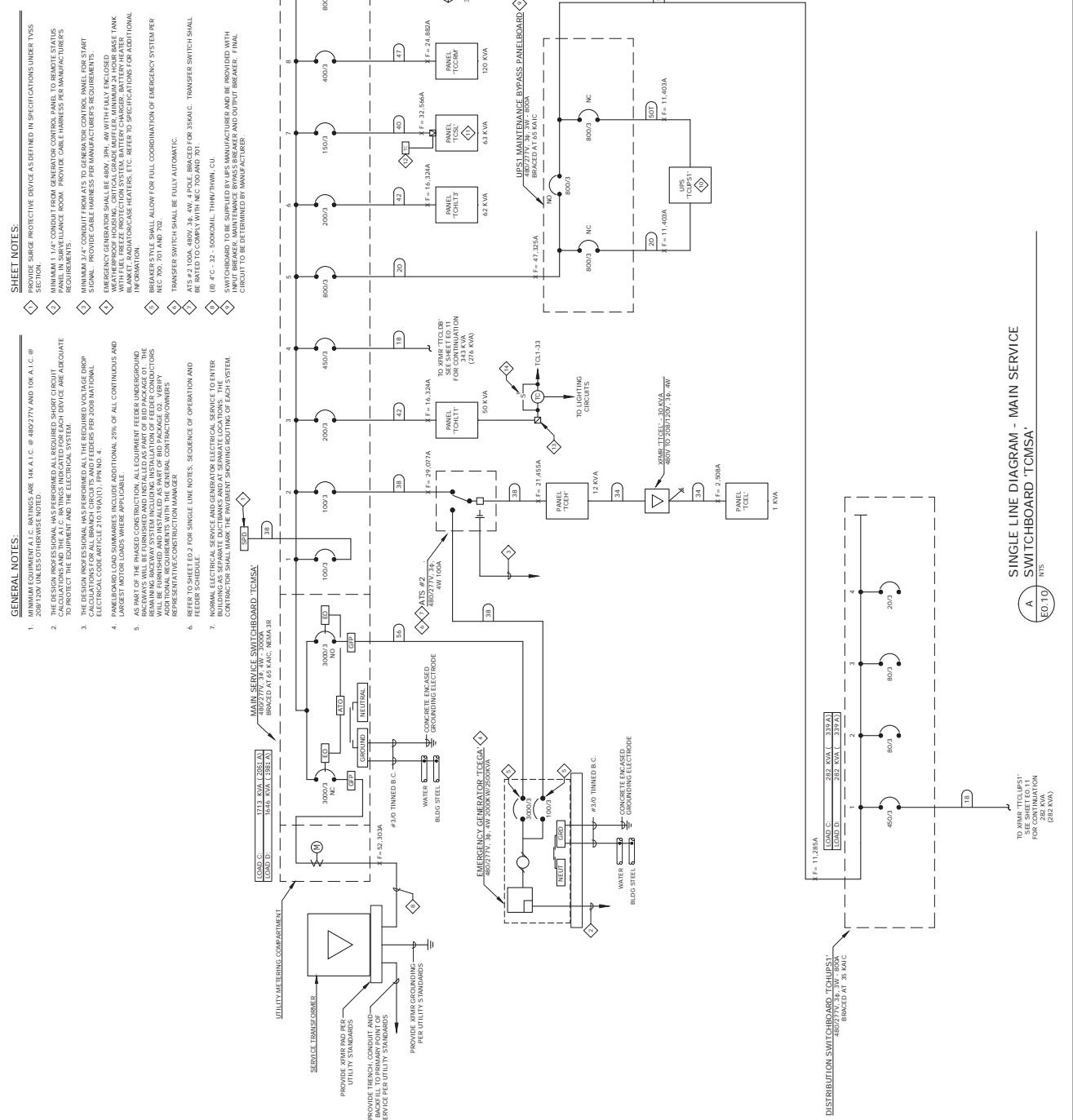
DATE: 03/27/18
 SHEET NO.: E0.10
 PROJECT: SINGLE LINE DIAGRAM - MAIN SERVICE SWITCHBOARD TCMSA

GENERAL NOTES:

- MINIMUM EQUIPMENT A.I.C. RATINGS ARE 14K A.I.C. @ 480/277V AND 10K A.I.C. @ 208/120V UNLESS OTHERWISE NOTED.
- ALL ELECTRICAL EQUIPMENT SHALL BE RATED TO PROTECT THE EQUIPMENT AND THE ELECTRICAL SYSTEM.
- THE DESIGN PROFESSIONAL HAS PERFORMED ALL THE REQUIRED VOLTAGE DROP CALCULATIONS AND SHALL PROVIDE ALL RATINGS INDICATED FOR EACH DEVICE AND APPROPRIATE TO PROTECT THE EQUIPMENT AND THE ELECTRICAL SYSTEM.
- THE DESIGN PROFESSIONAL HAS PERFORMED ALL THE REQUIRED VOLTAGE DROP CALCULATIONS AND SHALL PROVIDE ALL RATINGS INDICATED FOR EACH DEVICE AND APPROPRIATE TO PROTECT THE EQUIPMENT AND THE ELECTRICAL SYSTEM.
- AS PART OF THE PHASED CONSTRUCTION, ALL EQUIPMENT FEEDER UNDERGROUND REMAINING IN THE SYSTEM INCLUDING INSTALLATION OF FEEDER CONDUCTORS SHALL BE IDENTIFIED AND MARKED BY THE CONTRACTOR. THE CONTRACTOR SHALL VERIFY REPRESENTATIVE CONSTRUCTION MANAGER.
- REFER TO SHEET E0.2 FOR SINGLE LINE NOTES, SEQUENCE OF OPERATION AND FEEDER SCHEDULE.
- NORMAL ELECTRICAL SERVICE AND GENERATOR ELECTRICAL SERVICE TO ENTER THE SWITCHBOARD SHALL MARK THE INVENTRY SHOWING ROUTING OF EACH SYSTEM.

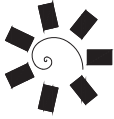
SHEET NOTES:

- PROVIDE SURGE PROTECTIVE DEVICE AS DEFINED IN SPECIFICATIONS UNDER THIS SECTION.
- 1.5" CONDUIT SHALL BE USED FOR ALL FEEDERS FROM MAIN SERVICE SWITCHBOARD TO ALL PANELS IN SERVICE URANCE ROOM. PROVIDE CABLE TRAYS PER MANUFACTURER'S REQUIREMENTS.
- MINIMUM 3/4" CONDUIT FROM ATS TO GENERATOR CONTROL PANEL FOR START SIGNAL. PROVIDE CABLE TRAYS PER MANUFACTURER'S REQUIREMENTS.
- EMERGENCY GENERATOR SHALL BE 480V, 3PH, 4W WITH FULLY ENCLOSED BASE TANK WITH FUEL PRETREAT PROTECTION SYSTEM, BATTERY CHARGER, BATTERY HEATER AND FUEL OIL HEAT EXCHANGER, ETC. REFER TO SPECIFICATIONS FOR ADDITIONAL INFORMATION.
- BREAKER STYLE SHALL ALLOW FOR FULL COORDINATION OF EMERGENCY SYSTEM PER NEC 700.70 AND 702.
- TRANSFER SWITCH SHALL BE FULLY AUTOMATIC.
- ATS #2 120A, 480V, 3P, 4W, # POLE, BRACED FOR 35KAIC. TRANSFER SWITCH SHALL BE RATED TO COMPLY WITH NEC 700 AND 701.
- SWITCHBOARD TO BE SUPPLIED BY UPS MANUFACTURER AND BE PROVIDED WITH TRANSFER SWITCH AND OUTPUT BREAKER. FINAL CIRCUIT TO BE DETERMINED BY MANUFACTURER.



SINGLE LINE DIAGRAM - MAIN SERVICE SWITCHBOARD TCMSA
 E0.10

TO XMBP T01 SEE SHEET E0.11 FOR CONTINUATION FOR 34.9 KVA (276 KVA)



James R. Childers
Architect, Inc.
1000 North 10th Street
Tomball, TX 77375
www.jrchilders.com



TAHLEQUAH CASINO
CHEROKEE NATION ENTERTAINMENT
TAHLEQUAH, OKLAHOMA

PROJECT NO: BID PACKAGE 02 (100% SET)

NO.	REVISION	DATE
1	ISSUED FOR BIDDING	05/27/18
2	REVISED PER COMMENTS	06/15/18
3	REVISED PER COMMENTS	06/22/18
4	REVISED PER COMMENTS	07/05/18
5	REVISED PER COMMENTS	07/12/18
6	REVISED PER COMMENTS	07/19/18
7	REVISED PER COMMENTS	07/26/18
8	REVISED PER COMMENTS	08/02/18
9	REVISED PER COMMENTS	08/09/18
10	REVISED PER COMMENTS	08/16/18
11	REVISED PER COMMENTS	08/23/18
12	REVISED PER COMMENTS	08/30/18
13	REVISED PER COMMENTS	09/06/18
14	REVISED PER COMMENTS	09/13/18
15	REVISED PER COMMENTS	09/20/18
16	REVISED PER COMMENTS	09/27/18
17	REVISED PER COMMENTS	10/04/18
18	REVISED PER COMMENTS	10/11/18
19	REVISED PER COMMENTS	10/18/18
20	REVISED PER COMMENTS	10/25/18
21	REVISED PER COMMENTS	11/01/18
22	REVISED PER COMMENTS	11/08/18
23	REVISED PER COMMENTS	11/15/18
24	REVISED PER COMMENTS	11/22/18
25	REVISED PER COMMENTS	11/29/18
26	REVISED PER COMMENTS	12/06/18
27	REVISED PER COMMENTS	12/13/18
28	REVISED PER COMMENTS	12/20/18
29	REVISED PER COMMENTS	12/27/18
30	REVISED PER COMMENTS	01/03/19
31	REVISED PER COMMENTS	01/10/19
32	REVISED PER COMMENTS	01/17/19
33	REVISED PER COMMENTS	01/24/19
34	REVISED PER COMMENTS	01/31/19
35	REVISED PER COMMENTS	02/07/19
36	REVISED PER COMMENTS	02/14/19
37	REVISED PER COMMENTS	02/21/19
38	REVISED PER COMMENTS	02/28/19
39	REVISED PER COMMENTS	03/06/19
40	REVISED PER COMMENTS	03/13/19
41	REVISED PER COMMENTS	03/20/19
42	REVISED PER COMMENTS	03/27/19
43	REVISED PER COMMENTS	04/03/19
44	REVISED PER COMMENTS	04/10/19
45	REVISED PER COMMENTS	04/17/19
46	REVISED PER COMMENTS	04/24/19
47	REVISED PER COMMENTS	05/01/19
48	REVISED PER COMMENTS	05/08/19
49	REVISED PER COMMENTS	05/15/19
50	REVISED PER COMMENTS	05/22/19
51	REVISED PER COMMENTS	05/29/19
52	REVISED PER COMMENTS	06/05/19
53	REVISED PER COMMENTS	06/12/19
54	REVISED PER COMMENTS	06/19/19
55	REVISED PER COMMENTS	06/26/19
56	REVISED PER COMMENTS	07/03/19
57	REVISED PER COMMENTS	07/10/19
58	REVISED PER COMMENTS	07/17/19
59	REVISED PER COMMENTS	07/24/19
60	REVISED PER COMMENTS	07/31/19
61	REVISED PER COMMENTS	08/07/19
62	REVISED PER COMMENTS	08/14/19
63	REVISED PER COMMENTS	08/21/19
64	REVISED PER COMMENTS	08/28/19
65	REVISED PER COMMENTS	09/04/19
66	REVISED PER COMMENTS	09/11/19
67	REVISED PER COMMENTS	09/18/19
68	REVISED PER COMMENTS	09/25/19
69	REVISED PER COMMENTS	10/02/19
70	REVISED PER COMMENTS	10/09/19
71	REVISED PER COMMENTS	10/16/19
72	REVISED PER COMMENTS	10/23/19
73	REVISED PER COMMENTS	10/30/19
74	REVISED PER COMMENTS	11/06/19
75	REVISED PER COMMENTS	11/13/19
76	REVISED PER COMMENTS	11/20/19
77	REVISED PER COMMENTS	11/27/19
78	REVISED PER COMMENTS	12/04/19
79	REVISED PER COMMENTS	12/11/19
80	REVISED PER COMMENTS	12/18/19
81	REVISED PER COMMENTS	12/25/19
82	REVISED PER COMMENTS	01/01/20
83	REVISED PER COMMENTS	01/08/20
84	REVISED PER COMMENTS	01/15/20
85	REVISED PER COMMENTS	01/22/20
86	REVISED PER COMMENTS	01/29/20
87	REVISED PER COMMENTS	02/05/20
88	REVISED PER COMMENTS	02/12/20
89	REVISED PER COMMENTS	02/19/20
90	REVISED PER COMMENTS	02/26/20
91	REVISED PER COMMENTS	03/05/20
92	REVISED PER COMMENTS	03/12/20
93	REVISED PER COMMENTS	03/19/20
94	REVISED PER COMMENTS	03/26/20
95	REVISED PER COMMENTS	04/02/20
96	REVISED PER COMMENTS	04/09/20
97	REVISED PER COMMENTS	04/16/20
98	REVISED PER COMMENTS	04/23/20
99	REVISED PER COMMENTS	04/30/20
100	REVISED PER COMMENTS	05/07/20

DATE: 05/27/18
DRAWING NO: 17-06
PROJECT NO: E0.11

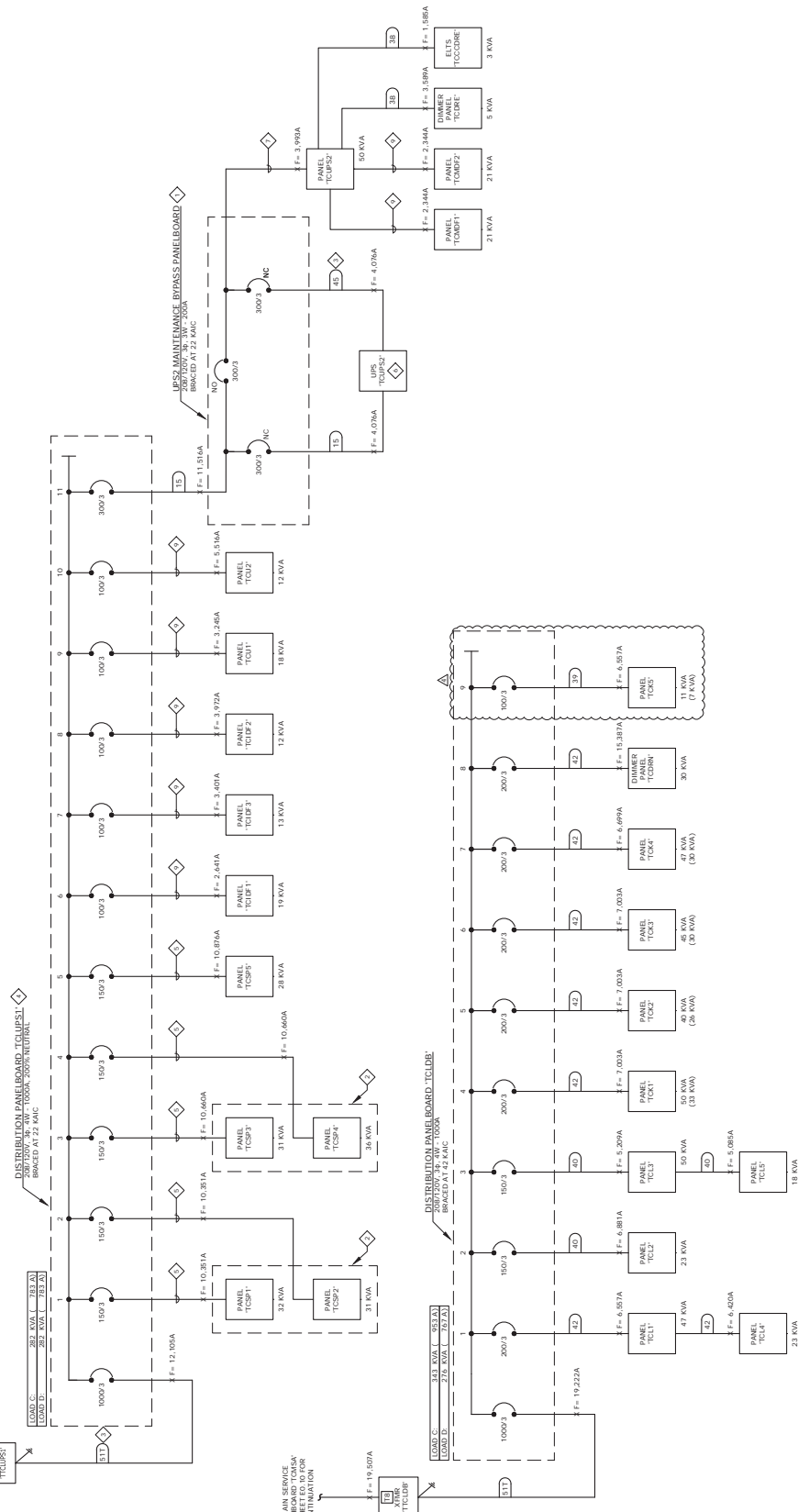
PARTIAL SINGLE LINE DIAGRAM

SHEET NOTES:

- ◇ SWITCHBOARD TO BE SUPPLIED BY UPS MANUFACTURER AND BE PROVIDED WITH 200/120V UNLESS OTHERWISE NOTED.
- ◇ ALL EQUIPMENT SHALL BE MANUFACTURED BY THE MANUFACTURER AND BE PROVIDED WITH 200/120V UNLESS OTHERWISE NOTED.
- ◇ CALCULATIONS AND THE A.I.C. RATINGS INDICATED FOR EACH DEVICE ARE ACCURATE TO PROTECT THE EQUIPMENT AND THE ELECTRICAL SYSTEM.
- ◇ THE DESIGN PROFESSIONAL HAS PERFORMED ALL THE REQUIRED VOLTAGE DROP CALCULATIONS AND THE A.I.C. RATINGS INDICATED FOR EACH DEVICE ARE ACCURATE TO PROTECT THE EQUIPMENT AND THE ELECTRICAL SYSTEM.
- ◇ LARGEST MOTOR LOADS WHERE APPLICABLE.
- ◇ AS PART OF THE PHASED CONSTRUCTION, ALL EQUIPMENT FEEDER UNDERGROUND WILL BE FINISHED AND INSTALLED AS PART OF BID PACKAGE 02. VERIFY REMAINING RACEWAY SYSTEM INCLUDING INSTALLATION OF FEEDING CONDUCTORS REPRESENTATIVE/CONSTRUCTION MANAGER.
- ◇ REFER TO SHEET E0.2 FOR SINGLE LINE NOTES, SEQUENCE OF OPERATION AND FEEDER SCHEDULE.
- ◇ NORMAL ELECTRICAL SERVICE AND GENERATOR ELECTRICAL SERVICE TO ENTER CONTRACTOR SHALL MARK THE PAVEMENT SHOWING ROUTING OF EACH SYSTEM.

GENERAL NOTES:

- 1. MINIMUM EQUIPMENT A.I.C. RATINGS ARE 14K A.I.C. @ 480/277V AND 10K A.I.C. @ 200/120V UNLESS OTHERWISE NOTED.
- 2. ALL EQUIPMENT SHALL BE MANUFACTURED BY THE MANUFACTURER AND BE PROVIDED WITH 200/120V UNLESS OTHERWISE NOTED.
- 3. THE DESIGN PROFESSIONAL HAS PERFORMED ALL THE REQUIRED VOLTAGE DROP CALCULATIONS AND THE A.I.C. RATINGS INDICATED FOR EACH DEVICE ARE ACCURATE TO PROTECT THE EQUIPMENT AND THE ELECTRICAL SYSTEM.
- 4. LARGEST MOTOR LOADS WHERE APPLICABLE.
- 5. AS PART OF THE PHASED CONSTRUCTION, ALL EQUIPMENT FEEDER UNDERGROUND WILL BE FINISHED AND INSTALLED AS PART OF BID PACKAGE 02. VERIFY REMAINING RACEWAY SYSTEM INCLUDING INSTALLATION OF FEEDING CONDUCTORS REPRESENTATIVE/CONSTRUCTION MANAGER.
- 6. REFER TO SHEET E0.2 FOR SINGLE LINE NOTES, SEQUENCE OF OPERATION AND FEEDER SCHEDULE.
- 7. NORMAL ELECTRICAL SERVICE AND GENERATOR ELECTRICAL SERVICE TO ENTER CONTRACTOR SHALL MARK THE PAVEMENT SHOWING ROUTING OF EACH SYSTEM.



A PARTIAL SINGLE LINE DIAGRAM
E0.11



**James R. Childers
Architect, Inc.**
Professional Seal
10000 N. 10th Street, Suite 200
Phoenix, AZ 85020
www.jrchilders.com



TAHLEQUAH CASINO
CHEROKEE NATION ENTERTAINMENT
TAHLEQUAH, OKLAHOMA

BID PACKAGE 02
(100% SET)

NO.	DESCRIPTION	DATE
1	ISSUED FOR BIDDING	08/14/2018
2	REVISED	08/14/2018
3	REVISED	08/14/2018
4	REVISED	08/14/2018
5	REVISED	08/14/2018
6	REVISED	08/14/2018
7	REVISED	08/14/2018
8	REVISED	08/14/2018
9	REVISED	08/14/2018
10	REVISED	08/14/2018

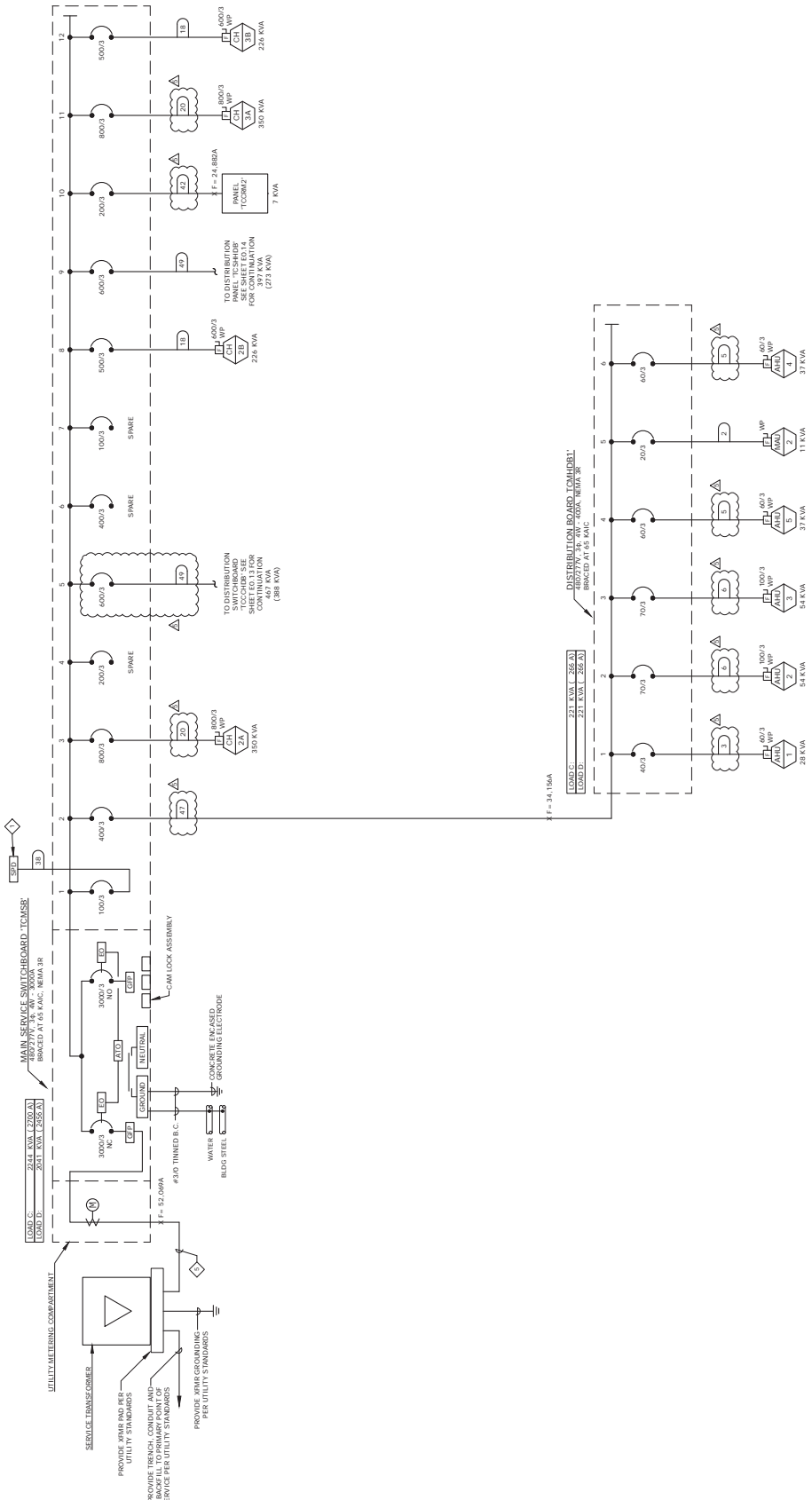
DATE: 08/27/18
DRAWING NO: 17-06

EO.12

SINGLE LINE DIAGRAM
- MAIN SERVICE
SWITCHBOARD TCMSSB

SHEET NOTES:

- 1. MINIMUM EQUIPMENT A.I.C. RATINGS ARE 14K A.I.C. @ 480/277V AND 10K A.I.C. @ 240/138V UNLESS OTHERWISE NOTED.
- 2. ALL FEEDER UNDERGROUND RAYWAY SYSTEMS SHALL BE INSTALLED IN ACCORDANCE WITH THE NATIONAL ELECTRICAL CODE (NEC) AND THE NATIONAL FIRE PROTECTION ASSOCIATION (NFPA) 70-2017. CALCULATIONS AND THE A.I.C. RATINGS INDICATED FOR EACH FEEDER SHALL BE ADEQUATE TO PROTECT THE EQUIPMENT AND THE ELECTRICAL SYSTEM.
- 3. THE DESIGN PROFESSIONAL HAS PERFORMED ALL THE REQUIRED VOLTAGE DROP CALCULATIONS AND THE A.I.C. RATINGS INDICATED FOR EACH FEEDER SHALL BE ADEQUATE TO PROTECT THE EQUIPMENT AND THE ELECTRICAL SYSTEM.
- 4. LARGEST MOTOR LOADS INCLUDE ADDITIONAL 25% OF ALL CONTINUOUS AND LARGEST MOTOR LOADS WHERE APPLICABLE.
- 5. AS PART OF THE PHASED CONSTRUCTION, ALL EQUIPMENT FEEDER UNDERGROUND RAYWAY SYSTEMS SHALL BE INSTALLED IN ACCORDANCE WITH THE NATIONAL ELECTRICAL CODE (NEC) AND THE NATIONAL FIRE PROTECTION ASSOCIATION (NFPA) 70-2017. CALCULATIONS AND THE A.I.C. RATINGS INDICATED FOR EACH FEEDER SHALL BE ADEQUATE TO PROTECT THE EQUIPMENT AND THE ELECTRICAL SYSTEM.
- 6. REFER TO SHEET E0.2 FOR SINGLE LINE NOTES, SEQUENCE OF OPERATION AND FEEDER SCHEDULE.
- 7. NORMAL ELECTRICAL SERVICE AND GENERATOR ELECTRICAL SERVICE TO ENTER CONTRACTOR SHALL MARK THE PAVEMENT SHOWING ROUTING OF EACH SYSTEM.



SINGLE LINE DIAGRAM - MAIN SERVICE SWITCHBOARD 'TCMSSB'

EO.12
A



James R. Childers
Architect, Inc.
 100 South Park Avenue
 Tallahassee, Florida 32301
 Phone: 904.224.2200
 Fax: 904.224.2201
 www.jrchilders.com



TAHLEQUAH, OKLAHOMA
TAHLEQUAH CASINO
CHEROKEE NATION ENTERTAINMENT

BID PACKAGE 02
(100% SET)

NO.	DESCRIPTION	DATE
1	ISSUED FOR BIDDING	07/20/2018
2	REVISED	07/20/2018
3	REVISED	07/20/2018
4	REVISED	07/20/2018
5	REVISED	07/20/2018
6	REVISED	07/20/2018
7	REVISED	07/20/2018
8	REVISED	07/20/2018
9	REVISED	07/20/2018
10	REVISED	07/20/2018

DATE: 08/27/18
 PROJECT NO: 17-06

E0.13

PARTIAL SINGLE LINE DIAGRAM

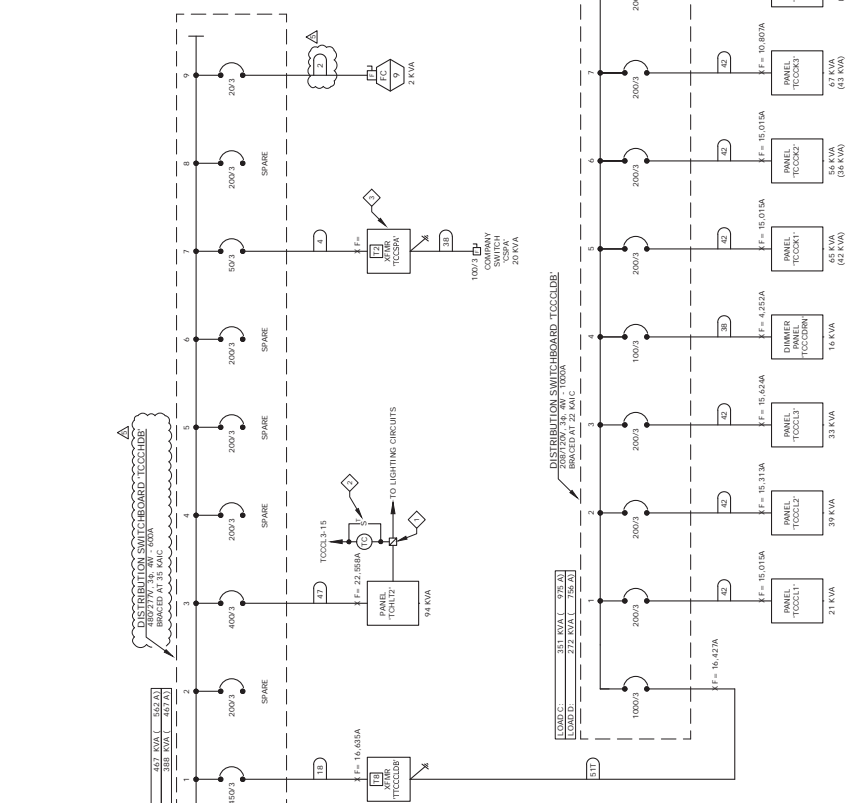
GENERAL NOTES:

- MINIMUM EQUIPMENT A.I.C. RATINGS ARE 1K A.I.C. @ 480/277V AND 10K A.I.C. @ 208/120V UNLESS OTHERWISE NOTED.
- ALL ELECTRICAL EQUIPMENT SHALL BE RATED FOR THE VOLTAGE, PHASE, AND FREQUENCY INDICATED ON THE EQUIPMENT DATA PLATE. ADEQUATE CALCULATIONS AND THE A.I.C. RATINGS INDICATED ON THE EQUIPMENT DATA PLATE ARE ADEQUATE TO PROTECT THE EQUIPMENT AND THE ELECTRICAL SYSTEM.
- THE DESIGN PROFESSIONAL HAS PERFORMED ALL THE REQUIRED VOLTAGE DROP CALCULATIONS AND THE A.I.C. RATINGS INDICATED ON THE EQUIPMENT DATA PLATE ARE ADEQUATE TO PROTECT THE EQUIPMENT AND THE ELECTRICAL SYSTEM.
- ELECTRICAL CODE ARTICLE 240.19(A)(1), FPN NO. 4.
- LARGEST MOTOR LOADS WHERE APPLICABLE.
- AS PART OF THE PHASED CONSTRUCTION, ALL EQUIPMENT FEEDER UNDERGROUND SHALL BE INSTALLED AND TESTED PRIOR TO THE PHASED CONSTRUCTION OF THE REMAINING BACKWAY SYSTEM INCLUDING INSTALLATION OF FEEDER CONDUCTORS AND UNDERGROUND CABLE TRAYS. VERIFY THE INSTALLATION OF FEEDER CONDUCTORS WITH THE REPRESENTATIVE CONSTRUCTION MANAGER.
- REFER TO SHEET E0.2 FOR SINGLE LINE NOTES, SEQUENCE OF OPERATION AND FEEDER SCHEDULE.
- NORMAL ELECTRICAL SERVICE AND GENERATOR ELECTRICAL SERVICE TO ENTER THE CASINO SHALL BE THROUGH THE MAIN ELECTRICAL SERVICE BUILDING. CONTRACTOR SHALL MARK THE PREVALENT SHOWING ROUTING OF EACH SYSTEM.

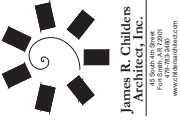
SHEET NOTES:

- ALL ELECTRICAL EQUIPMENT SHALL BE RATED FOR THE VOLTAGE, PHASE, AND FREQUENCY INDICATED ON THE EQUIPMENT DATA PLATE. ADEQUATE CALCULATIONS AND THE A.I.C. RATINGS INDICATED ON THE EQUIPMENT DATA PLATE ARE ADEQUATE TO PROTECT THE EQUIPMENT AND THE ELECTRICAL SYSTEM.
- 7-DAY PROGRAMMABLE TIME CLOCK AND BATTERY BACK-UP. LIGHTING CIRCUIT SHALL BE DETERMINED BY NUMBER OF LIGHTING FIXTURES TO BE CONTROLLED.
- TRANSFORMER SHALL BE RATED FOR THE VOLTAGE, PHASE, AND FREQUENCY INDICATED ON THE EQUIPMENT DATA PLATE. VERIFY THE INSTALLATION OF FEEDER CONDUCTORS WITH THE REPRESENTATIVE CONSTRUCTION MANAGER.
- COORDINATE LENGTH OF OPERATION WITH THE END USER.
- TRANSFORMER TO BE AUDIO ISOLATION TYPE.

TO MAIN SERVICE
 E0.17 FOR
 CONNECTION



A PARTIAL SINGLE LINE DIAGRAM
 E0.13



CHEROKEE NATION ENTERTAINMENT
TAHLEQUAH CASINO
TAHLEQUAH, OKLAHOMA

BID PACKAGE 02
(100% SET)

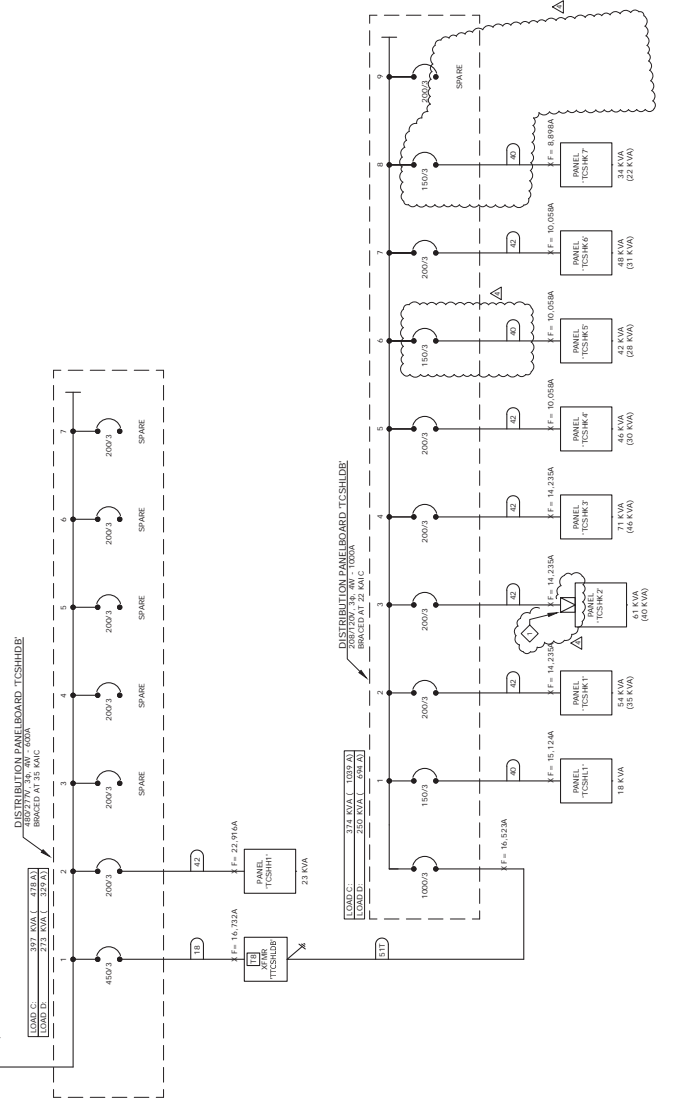
DATE: 05/27/18
PROJECT NO.: 17-06
E0.14
PARTIAL SINGLE LINE DIAGRAM

- GENERAL NOTES:**
- MINIMUM EQUIPMENT A.I.C. RATINGS ARE 14K A.I.C. @ 480/277V AND 10K A.I.C. @ 208/120V UNLESS OTHERWISE NOTED.
 - REVIEW ALL ELECTRICAL LOADS AND CONDUCTORS TO BE INSTALLED AND VERIFY THAT ALL LOADS AND CONDUCTORS INDICATED ON THIS DRAWING ARE ADEQUATE TO PROTECT THE EQUIPMENT AND THE ELECTRICALS SYSTEM.
 - THE DESIGN PROFESSIONAL HAS PERFORMED ALL THE REQUIRED VOLTAGE DROP CALCULATIONS AND THE A.I.C. RATINGS INDICATED ON THIS DRAWING ARE ADEQUATE TO PROTECT THE EQUIPMENT AND THE ELECTRICALS SYSTEM.
 - ELECTRICAL CODE ARTICLE 240.19(A)(1), FPN NO. 4.
 - LARGEST MOTOR LOADS WHERE APPLICABLE.
 - AS PART OF THE PHASED CONSTRUCTION, ALL EQUIPMENT FEEDER UNDERGROUND REMAINING BACKWAY SYSTEM INCLUDING INSTALLATION OF FEEDER CONDUCTORS WILL BE FINISHED AND INSTALLED AS PART OF BID PACKAGE 02. VERIFY THE REMAINING BACKWAY SYSTEM INCLUDING INSTALLATION OF FEEDER CONDUCTORS REPRESENTATIVE CONSTRUCTION MANAGER.
 - REFER TO SHEET E0.2 FOR SINGLE LINE NOTES, SEQUENCE OF OPERATION AND FEEDER SCHEDULE.
 - NORMAL ELECTRICAL SERVICE AND GENERATOR ELECTRICAL SERVICE TO ENTER CONTRACTOR SHALL MARK THE PREVALENT SHOWING ROUTING OF EACH SYSTEM.

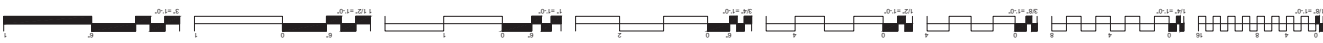
SHEET NOTES:

INDICATED BY THE SYMBOLS IN THIS DRAWING, THE CONTRACTOR SHALL BE RESPONSIBLE FOR INTERFACING WITH THE LOCAL CONTROL PANEL/GENERATOR SYSTEM TO PROVIDE ELECTRICAL CIRCUIT SHUNT WHEN HOODS ARE IN ALARM.

TO MAIN SERVICE
E0.17 FOR
TCHSHDR SITE SHEET
CONSTRUCTION



A PARTIAL SINGLE LINE DIAGRAM
E0.14





**James R. Childers
Architect, Inc.**
1000 S. W. 10th Ave., Suite 200
Fort Lauderdale, FL 33304
www.jrchilders.com



TAHLEQUAH, OKLAHOMA
**CHEROKEE NATION ENTERTAINMENT
TAHLEQUAH CASINO**

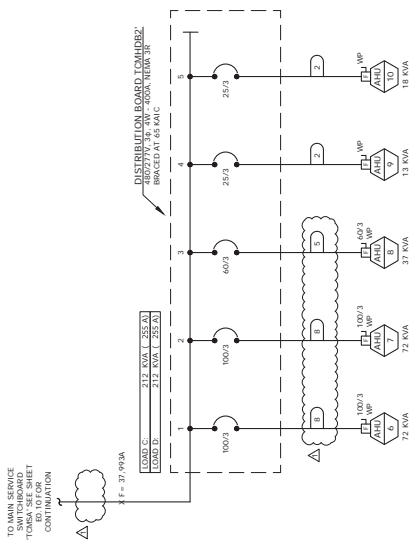
PROJECT NAME: **ADDENDUM #15**

NO.	DATE	REVISION
1	07/13/18	ISSUED FOR PERMIT
2	07/13/18	ISSUED FOR PERMIT
3	07/13/18	ISSUED FOR PERMIT
4	07/13/18	ISSUED FOR PERMIT
5	07/13/18	ISSUED FOR PERMIT
6	07/13/18	ISSUED FOR PERMIT
7	07/13/18	ISSUED FOR PERMIT
8	07/13/18	ISSUED FOR PERMIT
9	07/13/18	ISSUED FOR PERMIT
10	07/13/18	ISSUED FOR PERMIT

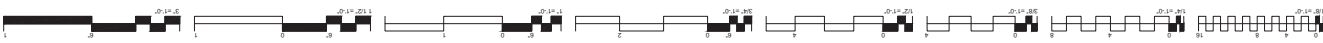
DATE: 07/13/18
DRAWING NO.: 17-06
PROJECT NAME: **EO.15**
PARTIAL SINGLE LINE DIAGRAM

GENERAL NOTES:

- MINIMUM EQUIPMENT A.I.C. RATINGS ARE 14K A.I.C. @ 480/277V AND 10K A.I.C. @ 208/120V UNLESS OTHERWISE NOTED.
- ALL ELECTRICAL LOADS SHALL BE BASED ON THE MANUFACTURER'S DATA SHEET. CALCULATIONS AND THE A.I.C. RATINGS INDICATED ON THE LOADS ARE ADEQUATE TO PROTECT THE EQUIPMENT AND THE ELECTRICAL SYSTEM.
- THE DESIGN PROFESSIONAL HAS PERFORMED ALL THE REQUIRED VOLTAGE DROP CALCULATIONS AND THE A.I.C. RATINGS INDICATED ON THE LOADS ARE ADEQUATE TO PROTECT THE EQUIPMENT AND THE ELECTRICAL SYSTEM. VERIFY THE ELECTRICAL CODE ARTICLE 210.19(A)(1), FPN NO. 4.
- LARGEST MOTOR LOADS WHERE APPLICABLE.
- AS PART OF THE PHASED CONSTRUCTION, ALL EQUIPMENT FEEDER UNDERGROUND SHALL BE INSTALLED AND TESTED PRIOR TO THE INSTALLATION OF THE REMAINING BACKWAY SYSTEM INCLUDING INSTALLATION OF FEEDER CONDUCTORS WILL BE FINISHED AND INSTALLED AS PART OF BID PACKAGE 02. VERIFY THE ELECTRICAL CODE ARTICLE 210.19(A)(1), FPN NO. 4.
- REFER TO SHEET EO.2 FOR SINGLE LINE NOTES, SEQUENCE OF OPERATION AND FEEDER SCHEDULE.
- NORMAL ELECTRICAL SERVICE AND GENERATOR ELECTRICAL SERVICE TO ENTER THE BUILDING SHALL BE THROUGH THE MAIN ELECTRICAL SERVICE PANEL. CONTRACTOR SHALL MARK THE PREVALENT SHOWING ROUTING OF EACH SYSTEM.



A PARTIAL SINGLE LINE DIAGRAM
EO.15



BIDDING INFORMATION	
1. DATE	06/03/18
2. TIME	11:46
3. PROJECT NAME	E026
4. PANEL INDEX	TCU1, TCDF1, TCU952, TCDF2

PANEL SCHEDULES	
PANEL INDEX	TCU1, TCDF1, TCU952, TCDF2

TYPE	DESCRIPTION	LOAD	BREKERS	QTY	BREKERS	QTY	DESCRIPTION	LOAD	REMARKS
2000	3.0	2	2000	1	2	2000	3.0	12000 ADJUSTER TRANSMITTER RECEIPTS	
2000	3.0	5	2000	5	5	2000	3.0	BUSWAY #4	
2000	3.0	8	2000	8	8	2000	3.0	OUTDOORS SPEAKER RECEIPTS	
2000	3.0	7	2000	7	7	2000	3.0	OUTDOORS SPEAKER RECEIPTS	
2000	3.0	11	2000	11	11	2000	3.0	OUTDOORS SPEAKER RECEIPTS	
2000	3.0	13	2000	13	13	2000	3.0	OUTDOORS SPEAKER RECEIPTS	
2000	3.0	14	2000	14	14	2000	3.0	SPARE	
2000	3.0	19	2000	19	19	2000	3.0	SPARE	
2000	3.0	20	2000	20	20	2000	3.0	SPARE	
2000	3.0	21	2000	21	21	2000	3.0	SPARE	
2000	3.0	26	2000	26	26	2000	3.0	SPARE	
2000	3.0	27	2000	27	27	2000	3.0	SPARE	
2000	3.0	28	2000	28	28	2000	3.0	SPARE	
2000	3.0	31	2000	31	31	2000	3.0	SPARE	
2000	3.0	32	2000	32	32	2000	3.0	SPARE	
2000	3.0	33	2000	33	33	2000	3.0	SPARE	
2000	3.0	34	2000	34	34	2000	3.0	SPARE	
2000	3.0	37	2000	37	37	2000	3.0	SPARE	
2000	3.0	38	2000	38	38	2000	3.0	SPARE	
2000	3.0	39	2000	39	39	2000	3.0	SPARE	
2000	3.0	40	2000	40	40	2000	3.0	SPARE	
TOTALS:		13 BRK, 25 LA							

TYPE	DESCRIPTION	LOAD	BREKERS	QTY	BREKERS	QTY	DESCRIPTION	LOAD	REMARKS
2000	3.0	2	2000	1	2	2000	3.0	12000 ADJUSTER TRANSMITTER RECEIPTS	
2000	3.0	5	2000	5	5	2000	3.0	BUSWAY #3	
2000	3.0	8	2000	8	8	2000	3.0	OUTDOORS SPEAKER RECEIPTS	
2000	3.0	7	2000	7	7	2000	3.0	OUTDOORS SPEAKER RECEIPTS	
2000	3.0	11	2000	11	11	2000	3.0	OUTDOORS SPEAKER RECEIPTS	
2000	3.0	13	2000	13	13	2000	3.0	OUTDOORS SPEAKER RECEIPTS	
2000	3.0	14	2000	14	14	2000	3.0	SPARE	
2000	3.0	19	2000	19	19	2000	3.0	SPARE	
2000	3.0	20	2000	20	20	2000	3.0	SPARE	
2000	3.0	21	2000	21	21	2000	3.0	SPARE	
2000	3.0	26	2000	26	26	2000	3.0	SPARE	
2000	3.0	27	2000	27	27	2000	3.0	SPARE	
2000	3.0	28	2000	28	28	2000	3.0	SPARE	
2000	3.0	31	2000	31	31	2000	3.0	SPARE	
2000	3.0	32	2000	32	32	2000	3.0	SPARE	
2000	3.0	33	2000	33	33	2000	3.0	SPARE	
2000	3.0	34	2000	34	34	2000	3.0	SPARE	
2000	3.0	37	2000	37	37	2000	3.0	SPARE	
2000	3.0	38	2000	38	38	2000	3.0	SPARE	
2000	3.0	39	2000	39	39	2000	3.0	SPARE	
2000	3.0	40	2000	40	40	2000	3.0	SPARE	
TOTALS:		14 BRK, 28 LA							

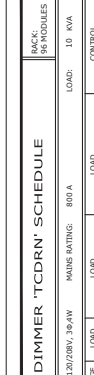
NETW. LAB: 10% 30%
NETW. LAB: 10% 30%
NETW. LAB: 10% 30%
NETW. LAB: 10% 30%
NETW. LAB: 10% 30%
NETW. LAB: 10% 30%
NETW. LAB: 10% 30%

TYPE	DESCRIPTION	LOAD	BREKERS	QTY	BREKERS	QTY	DESCRIPTION	LOAD	REMARKS
2000	3.0	2	2000	1	2	2000	3.0	12000 ADJUSTER TRANSMITTER RECEIPTS	
2000	3.0	5	2000	5	5	2000	3.0	BUSWAY #3	
2000	3.0	8	2000	8	8	2000	3.0	OUTDOORS SPEAKER RECEIPTS	
2000	3.0	7	2000	7	7	2000	3.0	OUTDOORS SPEAKER RECEIPTS	
2000	3.0	11	2000	11	11	2000	3.0	OUTDOORS SPEAKER RECEIPTS	
2000	3.0	13	2000	13	13	2000	3.0	OUTDOORS SPEAKER RECEIPTS	
2000	3.0	14	2000	14	14	2000	3.0	SPARE	
2000	3.0	19	2000	19	19	2000	3.0	SPARE	
2000	3.0	20	2000	20	20	2000	3.0	SPARE	
2000	3.0	21	2000	21	21	2000	3.0	SPARE	
2000	3.0	26	2000	26	26	2000	3.0	SPARE	
2000	3.0	27	2000	27	27	2000	3.0	SPARE	
2000	3.0	28	2000	28	28	2000	3.0	SPARE	
2000	3.0	31	2000	31	31	2000	3.0	SPARE	
2000	3.0	32	2000	32	32	2000	3.0	SPARE	
2000	3.0	33	2000	33	33	2000	3.0	SPARE	
2000	3.0	34	2000	34	34	2000	3.0	SPARE	
2000	3.0	37	2000	37	37	2000	3.0	SPARE	
2000	3.0	38	2000	38	38	2000	3.0	SPARE	
2000	3.0	39	2000	39	39	2000	3.0	SPARE	
2000	3.0	40	2000	40	40	2000	3.0	SPARE	
TOTALS:		14 BRK, 28 LA							

TYPE	DESCRIPTION	LOAD	BREKERS	QTY	BREKERS	QTY	DESCRIPTION	LOAD	REMARKS
2000	3.0	2	2000	1	2	2000	3.0	12000 ADJUSTER TRANSMITTER RECEIPTS	
2000	3.0	5	2000	5	5	2000	3.0	BUSWAY #4	
2000	3.0	8	2000	8	8	2000	3.0	OUTDOORS SPEAKER RECEIPTS	
2000	3.0	7	2000	7	7	2000	3.0	OUTDOORS SPEAKER RECEIPTS	
2000	3.0	11	2000	11	11	2000	3.0	OUTDOORS SPEAKER RECEIPTS	
2000	3.0	13	2000	13	13	2000	3.0	OUTDOORS SPEAKER RECEIPTS	
2000	3.0	14	2000	14	14	2000	3.0	SPARE	
2000	3.0	19	2000	19	19	2000	3.0	SPARE	
2000	3.0	20	2000	20	20	2000	3.0	SPARE	
2000	3.0	21	2000	21	21	2000	3.0	SPARE	
2000	3.0	26	2000	26	26	2000	3.0	SPARE	
2000	3.0	27	2000	27	27	2000	3.0	SPARE	
2000	3.0	28	2000	28	28	2000	3.0	SPARE	
2000	3.0	31	2000	31	31	2000	3.0	SPARE	
2000	3.0	32	2000	32	32	2000	3.0	SPARE	
2000	3.0	33	2000	33	33	2000	3.0	SPARE	
2000	3.0	34	2000	34	34	2000	3.0	SPARE	
2000	3.0	37	2000	37	37	2000	3.0	SPARE	
2000	3.0	38	2000	38	38	2000	3.0	SPARE	
2000	3.0	39	2000	39	39	2000	3.0	SPARE	
2000	3.0	40	2000	40	40	2000	3.0	SPARE	
TOTALS:		13 BRK, 25 LA							

TYPE	DESCRIPTION	LOAD	BREKERS	QTY	BREKERS	QTY	DESCRIPTION	LOAD	REMARKS
2000	3.0	2	2000	1	2	2000	3.0	12000 ADJUSTER TRANSMITTER RECEIPTS	
2000	3.0	5	2000	5	5	2000	3.0	BUSWAY #1	
2000	3.0	8	2000	8	8	2000	3.0	VALT RECEIPTS	
2000	3.0	7	2000	7	7	2000	3.0	VALT RECEIPTS	
2000	3.0	11	2000	11	11	2000	3.0	VALT RECEIPTS	
2000	3.0	13	2000	13	13	2000	3.0	VALT RECEIPTS	
2000	3.0	14	2000	14	14	2000	3.0	MAN GAGE RECEIPTS	
2000	3.0	19	2000	19	19	2000	3.0	MAN GAGE RECEIPTS	
2000	3.0	20	2000	20	20	2000	3.0	MAN GAGE RECEIPTS	
2000	3.0	21	2000	21	21	2000	3.0	MAN GAGE RECEIPTS	
2000	3.0	26	2000	26	26	2000	3.0	MAN GAGE RECEIPTS	
2000	3.0	27	2000	27	27	2000	3.0	MAN GAGE RECEIPTS	
2000	3.0	28	2000	28	28	2000	3.0	MAN GAGE RECEIPTS	
2000	3.0	31	2000	31	31	2000	3.0	MAN GAGE RECEIPTS	
2000	3.0	32	2000	32	32	2000	3.0	MAN GAGE RECEIPTS	
2000	3.0	33	2000	33	33	2000	3.0	MAN GAGE RECEIPTS	
2000	3.0	34	2000	34	34	2000	3.0	MAN GAGE RECEIPTS	
2000	3.0	37	2000	37	37	2000	3.0	MAN GAGE RECEIPTS	
2000	3.0	38	2000	38	38	2000	3.0	MAN GAGE RECEIPTS	
2000	3.0	39	2000	39	39	2000	3.0	MAN GAGE RECEIPTS	
2000	3.0	40	2000	40	40	2000	3.0	MAN GAGE RECEIPTS	
TOTALS:		21 BRK, 57 LA							

TYPE	DESCRIPTION	LOAD	BREKERS	QTY	BREKERS	QTY	DESCRIPTION	LOAD	REMARKS
2000	3.0	2	2000	1	2	2000	3.0	12000 ADJUSTER TRANSMITTER RECEIPTS	
2000	3.0	5	2000	5	5	2000	3.0	BUSWAY #1	
2000	3.0	8	2000	8	8	2000	3.0	VALT RECEIPTS	
2000	3.0	7	2000	7	7	2000	3.0	VALT RECEIPTS	
2000	3.0	11	2000	11	11	2000	3.0	VALT RECEIPTS	
2000	3.0	13	2000	13	13	2000	3.0	VALT RECEIPTS	
2000	3.0	14	2000	14	14	2000	3.0	MAN GAGE RECEIPTS	
2000	3.0	19	2000	19	19	2000	3.0	MAN GAGE RECEIPTS	
2000	3.0	20	2000	20	20	2000	3.0	MAN GAGE RECEIPTS	
2000	3.0	21	2000	21	21	2000	3.0	MAN GAGE RECEIPTS	
2000	3.0	26	2000	26	26	2000	3.0	MAN GAGE RECEIPTS	
2000	3.0	27	2000	27	27				



James R. Childers
Architect, Inc.
 1000 North 10th Street, Suite 1100
 Oklahoma City, Oklahoma 73106
 Tel: (405) 522-2000
 Fax: (405) 522-2001
 www.jrchilders.com



CHEROKEE NATION ENTERTAINMENT
TAHLEQUAH CASINO
 TAHLEQUAH, OKLAHOMA

BID PACKAGE 05

1	GENERAL CONTRACTOR	
2	ELECTRICAL CONTRACTOR	
3	MECHANICAL CONTRACTOR	
4	PLUMBING CONTRACTOR	
5	PAINT CONTRACTOR	
6	CONCRETE CONTRACTOR	
7	IRONWORK CONTRACTOR	
8	SCAFFOLDING CONTRACTOR	

DATE: 05/03/18
 PREPARED BY: E0.30

DIMMER SCHEDULES

DIMMER 'TCDRN' SCHEDULE					BACK: 24 MODULES
INCOMING LINE: 120/208V, 3Ø, 4W MAINS RATING: 208 A					LOAD: 5 KVA
DIMMER NUMBER	WATTAGE NATIVE	LOAD	LOCATION	FIXTURE DESCRIPTION	CHANNEL
E1	2400	270	MENS 24 & WOMENS 22	FIXTURE L14'	
E2	2400	540	MENS 11 & WOMENS 13	FIXTURE L14'	
E3	2400	100	MENS 11 & WOMENS 22	FIXTURE L17'	NON DIM
E4	2400	500	MENS 11 & WOMENS 22	FIXTURE L17'	NON DIM
E5	2400	1100	GAMING	FIXTURE L16'	0-10V
E6	2400	1170	GAMING	FIXTURE L16'	0-10V
E7	2400	600	ENTRY	FIXTURE L16.5'	
E8	2400	110	SPARE		TBD
E9	2400	110	PLAYERS CLUB	FIXTURE L14'	
E10	2400	180	CASHIER	FIXTURE L14'	
E11	2400	150	BAR	FIXTURE L16'	0-10V
E12	2400	330	BAR	FIXTURE L16'	0-10V
E13	2400	300	VIP FRONT	FIXTURE L16'	0-10V
E14	2400	110	SPARE		TBD
E15	2400	110	STEAKHOUSE WAITING	FIXTURE L15'	
E16	2400	90	STEAKHOUSE WAITING	FIXTURE L15'	TBD
E17	2400	90	STEAKHOUSE HOUSE BAR	FIXTURE L15'	TBD
E18	2400	530	STEAKHOUSE DINING	FIXTURE L15'	TBD
E19	2400	70	STEAKHOUSE BAR	FIXTURE L15'	TBD
E20	2400	30	STEAKHOUSE HOUSE DINING	FIXTURE L15'	TBD
E21	2400	0	SOUTH ENTRY	FIXTURE L16'	TBD
E22	2400	0	SPARE		TBD
E23	2400	0	SPARE		TBD
E24	2400	0	SPARE		TBD

DIMMER 'TCDRN' SCHEDULE					BACK: 30 KVA
INCOMING LINE: 120/208V, 3Ø, 4W MAINS RATING: 800 A					LOAD: 30 KVA
DIMMER NUMBER	WATTAGE NATIVE	LOAD	LOCATION	FIXTURE DESCRIPTION	CHANNEL
1	2400	1030	NORTHWEST EXTERIOR	FIXTURE LP-01'	NON-DIM
2	2400	620	WEST FRONT EXTERIOR	FIXTURE LP-01'	NON-DIM
3	2400	680	WEST FRONT EXTERIOR	FIXTURE LP-01'	NON-DIM
4	2400	550	WEST FRONT EXTERIOR	FIXTURE LP-01'	NON-DIM
5	2400	570	WEST FRONT EXTERIOR	FIXTURE LP-01'	NON-DIM
6	2400	800	WEST FRONT EXTERIOR	FIXTURE LP-01'	NON-DIM
7	2400	840	WEST FRONT EXTERIOR	FIXTURE LP-01'	NON-DIM
8	2400	890	WEST FRONT EXTERIOR	FIXTURE LP-01'	NON-DIM
9	2400	570	WEST FRONT EXTERIOR	FIXTURE LP-01'	NON-DIM
10	2400	570	WEST FRONT EXTERIOR	FIXTURE LP-01'	NON-DIM
11	2400	1280	SOUTH WEST EXTERIOR	FIXTURE LP-01'	NON-DIM
12	2400	1280	SOUTH WEST EXTERIOR	FIXTURE LP-01'	NON-DIM
13	2400	1080	NORTHWEST EXTERIOR	FIXTURE LP-02'	NON-DIM
14	2400	640	WEST FRONT EXTERIOR	FIXTURE LP-02'	NON-DIM
15	2400	710	WEST FRONT EXTERIOR	FIXTURE LP-02'	NON-DIM
16	2400	800	WEST FRONT EXTERIOR	FIXTURE LP-02'	NON-DIM
17	2400	800	WEST FRONT EXTERIOR	FIXTURE LP-02'	NON-DIM
18	2400	970	WEST FRONT EXTERIOR	FIXTURE LP-02'	NON-DIM
19	2400	870	WEST FRONT EXTERIOR	FIXTURE LP-02'	NON-DIM
20	2400	1010	SOUTH WEST EXTERIOR	FIXTURE LP-02'	NON-DIM
21	2400	0	SPARE		
22	2400	0	SPARE		
23	2400	0	SPARE		
24	2400	0	SPARE		
25	2400	0	SPARE		
26	2400	0	SPARE		
27	2400	0	SPARE		
28	2400	0	SPARE		
29	2400	570	WEST FRONT EXTERIOR	FIXTURE LP-01'	NON-DIM
30	2400	620	WEST FRONT EXTERIOR	FIXTURE LP-01'	NON-DIM
31	2400	1030	SOUTH WEST EXTERIOR	FIXTURE LP-01'	NON-DIM
32	2400	0	SPARE		
33	2400	1200	GAMING-THERE ITG	FIXTURE LL-01'	NON-DIM
34	2400	1390	GAMING-THERE ITG	FIXTURE LL-01'	NON-DIM
35	2400	1230	GAMING-THERE ITG	FIXTURE LL-01'	NON-DIM
36	2400	1330	GAMING-THERE ITG	FIXTURE LL-01'	NON-DIM
37	2400	1430	GAMING GENERAL ITG	FIXTURE L16'	0-10V
38	2400	1430	GAMING GENERAL ITG	FIXTURE L16'	0-10V
39	2400	1410	GAMING GENERAL ITG	FIXTURE L16'	0-10V
40	2400	1100	GAMING GENERAL ITG	FIXTURE L16'	0-10V
41	2400	1330	GAMING GENERAL ITG	FIXTURE L16'	0-10V
42	2400	0	SPARE		
43	2400	300	MENS 24 WOMENS 22	MIRROR LTG	NON-DIM
44	2400	700	MENS 11 & WOMENS 13	MIRROR LTG	NON-DIM
45	2400	960	ENTRY	MIRROR LTG	TBD
46	2400	0	SPARE		
47	2400	0	SPARE		
48	2400	660	VESTIBULE	FIXTURE LP-03'	TBD

DIMMER 'TCDRN' SCHEDULE					BACK: 10 KVA
INCOMING LINE: 120/208V, 3Ø, 4W MAINS RATING: 800 A					LOAD: 10 KVA
DIMMER NUMBER	WATTAGE NATIVE	LOAD	LOCATION	FIXTURE DESCRIPTION	CHANNEL
49	2400	110	PLAYERS CLUB	FIXTURE L14'	TBD
50	2400	480	PLAYERS CLUB		TBD
51	2400	480	PLAYERS CLUB		TBD
52	2400	0	SPARE		TBD
53	2400	0	SPARE		0-10V
54	2400	900	LOUNGE	FIXTURE L16'	0-10V
55	2400	300	BAR	FIXTURE L16.5'	TBD
56	2400	300	BAR	FIXTURE L16.5'	TBD
57	2400	300	BAR	FIXTURE L16.5'	TBD
58	2400	300	BAR	FIXTURE L16.5'	TBD
59	2400	300	BAR	FIXTURE L16.5'	TBD
60	2400	720	GRAB AND GO	FIXTURE L16'	TBD
61	2400	720	GRAB AND GO	FIXTURE L16'	TBD
62	2400	300	GRAB AND GO	FIXTURE L16'	TBD
63	2400	300	GRAB AND GO	FIXTURE L16'	TBD
64	2400	140	VIP FRONT	FIXTURE L16'	0-10V
65	2400	0	SPARE		TBD
66	2400	110	STEAKHOUSE WAITING	FIXTURE L15'	TBD
67	2400	440	STEAKHOUSE	FIXTURE L15'	TBD
68	2400	50	STEAKHOUSE BAR	FIXTURE L15'	TBD
69	2400	110	STEAKHOUSE DINING	FIXTURE L15'	TBD
70	2400	160	STEAKHOUSE HOUSE DINING	FIXTURE L15'	TBD
71	2400	160	STEAKHOUSE HOUSE DINING	FIXTURE L15'	TBD
72	2400	160	STEAKHOUSE HOUSE DINING	FIXTURE L15'	TBD
73	2400	300	STEAKHOUSE BAR	FIXTURE LL-01'	TBD
74	2400	300	STEAKHOUSE BAR	FIXTURE LL-01'	TBD
75	2400	300	STEAKHOUSE BAR	FIXTURE LL-02'	TBD
76	2400	250	STEAKHOUSE BAR	FIXTURE LL-02'	TBD
77	2400	200	STEAKHOUSE R.R.	MIRRORS	NON-DIM
78	2400	70	KITCHEN R.R.	MIRRORS	NON-DIM
79	2400	400	GAMING	COLUMN LIGHTING ELEMENT	TBD
80	2400	400	GAMING	COLUMN LIGHTING ELEMENT	TBD
81	2400	1200	SOUTH ENTRY	FIXTURE L16'	TBD
82	2400	0	SPARE		TBD
83	2400	0	SPARE		TBD
84	2400	0	SPARE		TBD
85	2400	0	SPARE		TBD
86	2400	0	SPARE		TBD
87	2400	0	SPARE		TBD
88	2400	0	SPARE		TBD
89	2400	0	SPARE		TBD
90	2400	0	SPARE		TBD
91	2400	0	SPARE		TBD
92	2400	0	SPARE		TBD
93	2400	0	SPARE		TBD
94	2400	0	SPARE		TBD
95	2400	0	SPARE		TBD
96	2400	0	SPARE		TBD



EMERGENCY LIGHTING TRANSFER CABINET 'TCCCDRE' SCHEDULE

PANEL: 34 CIRCUITS
LOAD: 3 KVA

WIRING NUMBER	WIRING BEAKER	LOAD	WIRING LOCATION	DESCRIPTION
32	X1	20A	BREAKOUT 93	FIXTURE L1P
33	X2	20A	BREAKOUT 93	FIXTURE L1P
34	X3	20A	RESTROOM	FIXTURE L1P
35	X4	20A	RESTROOM	FIXTURE L1P
36	X5	20A	RESTROOM	FIXTURE L1P
37	X6	20A	RESTROOM	FIXTURE L1P
38	X7	20A	PRE FUNCTION	FIXTURE L1P
39	X8	20A	PRE FUNCTION	FIXTURE L1P
40	X9	20A	SW BANQUET	FIXTURE L1P
41	X10	20A	SW BANQUET	FIXTURE L1P
42	X11	20A	SW BANQUET	FIXTURE L1P
43	X12	20A	SW BANQUET	FIXTURE L1P
44	X13	20A	SW BANQUET	FIXTURE L1P
45	X14	20A	SW BANQUET	FIXTURE L1P
46	X15	20A	SW BANQUET	FIXTURE L1P
47	X16	20A	SW BANQUET	FIXTURE L1P
48	X17	20A	SW BANQUET	FIXTURE L1P
49	X18	20A	SW BANQUET	FIXTURE L1P
50	X19	20A	SW BANQUET	FIXTURE L1P
51	X20	20A	SW BANQUET	FIXTURE L1P
52	X21	20A	SPARE	
53	X22	20A	SPARE	
54	X23	20A	SPARE	
55	X24	20A	SPARE	

DIMMER 'TCCCDRN' SCHEDULE

LOAD: 16 KVA

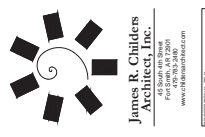
WIRING NUMBER	WIRING BEAKER	LOAD	WIRING LOCATION	DESCRIPTION	WIRING PANEL	WIRING PANEL
1	2400	495	NE BANQUET ROOM	FIXTURE L1P	TBD	TBD
2	2400	605	NE BANQUET ROOM	FIXTURE L1P	TBD	TBD
3	2400	120	NE BANQUET ROOM	FIXTURE L1P	TBD	TBD
4	2400	500	NE CENTER BANQUET ROOM	FIXTURE L1P	TBD	TBD
5	2400	605	NE CENTER BANQUET ROOM	FIXTURE L1P	TBD	TBD
6	2400	120	NE CENTER BANQUET ROOM	FIXTURE L1P	TBD	TBD
7	2400	500	NW CENTER BANQUET ROOM	FIXTURE L1P	TBD	TBD
8	2400	605	NW CENTER BANQUET ROOM	FIXTURE L1P	TBD	TBD
9	2400	120	NW CENTER BANQUET ROOM	FIXTURE L1P	TBD	TBD
10	2400	495	NW BANQUET ROOM	FIXTURE L1P	TBD	TBD
11	2400	605	NW BANQUET ROOM	FIXTURE L1P	TBD	TBD
12	2400	120	NW BANQUET ROOM	FIXTURE L1P	TBD	TBD
13	2400	495	SE BANQUET ROOM	FIXTURE L1P	TBD	TBD
14	2400	605	SE BANQUET ROOM	FIXTURE L1P	TBD	TBD
15	2400	120	SE BANQUET ROOM	FIXTURE L1P	TBD	TBD
16	2400	500	SE CENTER BANQUET ROOM	FIXTURE L1P	TBD	TBD
17	2400	605	SE CENTER BANQUET ROOM	FIXTURE L1P	TBD	TBD
18	2400	120	SE CENTER BANQUET ROOM	FIXTURE L1P	TBD	TBD
19	2400	500	SW CENTER BANQUET ROOM	FIXTURE L1P	TBD	TBD
20	2400	605	SW CENTER BANQUET ROOM	FIXTURE L1P	TBD	TBD
21	2400	120	SW CENTER BANQUET ROOM	FIXTURE L1P	TBD	TBD
22	2400	495	SW BANQUET ROOM	FIXTURE L1P	TBD	TBD
23	2400	605	SW BANQUET ROOM	FIXTURE L1P	TBD	TBD
24	2400	120	SW BANQUET ROOM	FIXTURE L1P	TBD	TBD
25	2400	440	BANQUET ROOMS CENTER ASSE	FIXTURE L1P	TBD	TBD
26	2400	620	PRE FUNCTION	FIXTURE L1F	TBD	TBD
27	2400	620	PRE FUNCTION	FIXTURE L1F	TBD	TBD
28	2400	500	PRE FUNCTION MENS R.R.	BACKLIT MIRRORS	TBD	TBD
29	2400	500	PRE FUNCTION MENS R.R.	BACKLIT MIRRORS	TBD	TBD
30	2400	160	BREAKOUT 93	FIXTURE L1F	NON-DIM	NON-DIM
31	2400	180	BREAKOUT 93	FIXTURE L1F	NON-DIM	NON-DIM
32	2400	160	BREAKOUT 93	FIXTURE L1F	NON-DIM	NON-DIM
33	2400	160	BREAKOUT 93	FIXTURE L1F	NON-DIM	NON-DIM
34	2400	290	PRE FUNCTION WOMENS R.R.	FIXTURE L1F	TBD	TBD
35	2400	290	PRE FUNCTION WOMENS R.R.	FIXTURE L1F	TBD	TBD
36	2400	140	PRE FUNCTION MEN'S R.R.	FIXTURE L1F	NON-DIM	NON-DIM
37	2400	290	PRE FUNCTION MENS R.R.	FIXTURE L1F	TBD	TBD
38	2400	490	PRE FUNCTION	FIXTURE L1F	TBD	TBD
39	2400	400	PRE FUNCTION	FIXTURE L1F	TBD	TBD
40	2400	110	SW BANQUET ROOM	FIXTURE L1P	TBD	TBD
41	2400	90	SW CENTER BANQUET ROOM	FIXTURE L1P	TBD	TBD
42	2400	90	SE CENTER BANQUET ROOM	FIXTURE L1P	TBD	TBD
43	2400	110	SE BANQUET ROOM	FIXTURE L1P	TBD	TBD
44	2400	110	NW BANQUET ROOM	FIXTURE L1P	TBD	TBD
45	2400	90	NW CENTER BANQUET ROOM	FIXTURE L1P	TBD	TBD
46	2400	90	NW CENTER BANQUET ROOM	FIXTURE L1P	TBD	TBD
47	2400	110	NE BANQUET ROOM	FIXTURE L1P	TBD	TBD
48	2400	360	PRE FUNCTION	FIXTURE L1F	TBD	TBD

DIMMER 'TCCCDRN' SCHEDULE

LOAD: 4 KVA

WIRING NUMBER	WIRING BEAKER	LOAD	WIRING LOCATION	DESCRIPTION	WIRING PANEL	WIRING PANEL
49	2400	440	BANQUET ROOM CENTER ASSE	FIXTURE L1F	TBD	TBD
50	2400	80	ENTRY VESTIBULE	FIXTURE L1F	TBD	TBD
51	2400	80	ENTRY VESTIBULE	FIXTURE L1F	TBD	TBD
52	2400	240	BREAKOUT 94	5-GANG	TBD	TBD
53	2400	160	BREAKOUT 94	FIXTURE L1P	NON-DIM	NON-DIM
54	2400	160	BREAKOUT 94	FIXTURE L1P	TBD	TBD
55	2400	1500	ENTRY VESTIBULE	FIXTURE T1	TBD	TBD
56	2400	1500	ENTRY VESTIBULE	FIXTURE T1	TBD	TBD
57	2400	400	SPARE	SPARE	TBD	TBD
58	2400	400	SPARE	SPARE	TBD	TBD
59	2400	400	SPARE	SPARE	TBD	TBD
60	2400	400	SPARE	SPARE	TBD	TBD
61	2400	400	SPARE	SPARE	TBD	TBD
62	2400	400	SPARE	SPARE	TBD	TBD
63	2400	400	SPARE	SPARE	TBD	TBD
64	2400	400	SPARE	SPARE	TBD	TBD
65	2400	400	SPARE	SPARE	TBD	TBD
66	2400	400	SPARE	SPARE	TBD	TBD
67	2400	400	SPARE	SPARE	TBD	TBD
68	2400	400	SPARE	SPARE	TBD	TBD
69	2400	400	SPARE	SPARE	TBD	TBD
70	2400	400	SPARE	SPARE	TBD	TBD
71	2400	400	SPARE	SPARE	TBD	TBD
72	2400	400	SPARE	SPARE	TBD	TBD
73	2400	400	SPARE	SPARE	TBD	TBD
74	2400	400	SPARE	SPARE	TBD	TBD
75	2400	400	SPARE	SPARE	TBD	TBD
76	2400	400	SPARE	SPARE	TBD	TBD
77	2400	400	SPARE	SPARE	TBD	TBD
78	2400	400	SPARE	SPARE	TBD	TBD
79	2400	400	SPARE	SPARE	TBD	TBD
80	2400	400	SPARE	SPARE	TBD	TBD
81	2400	400	SPARE	SPARE	TBD	TBD
82	2400	400	SPARE	SPARE	TBD	TBD
83	2400	400	SPARE	SPARE	TBD	TBD
84	2400	400	SPARE	SPARE	TBD	TBD
85	2400	400	SPARE	SPARE	TBD	TBD
86	2400	400	SPARE	SPARE	TBD	TBD
87	2400	400	SPARE	SPARE	TBD	TBD
88	2400	400	SPARE	SPARE	TBD	TBD
89	2400	400	SPARE	SPARE	TBD	TBD
90	2400	400	SPARE	SPARE	TBD	TBD
91	2400	400	SPARE	SPARE	TBD	TBD
92	2400	400	SPARE	SPARE	TBD	TBD
93	2400	400	SPARE	SPARE	TBD	TBD
94	2400	400	SPARE	SPARE	TBD	TBD
95	2400	400	SPARE	SPARE	TBD	TBD
96	2400	400	SPARE	SPARE	TBD	TBD

SHEET NOTES:
 ROUTE CIRCUIT THROUGH ITS PANEL AS INDICATED.



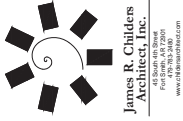
TAHLEQUAH OKLAHOMA
CHEROKEE NATION ENTERTAINMENT
 TAHLEQUAH CASINO

PROJECT NAME:
APPENDUM #10

DATE:
 08/22/18
 DRAWING NO.:
 17-06

PROJECT:
E0.31

DIMMER SCHEDULES



**James R. Childers
Architect, Inc.**
P.O. Box 1000
1000 N. 10th St., Suite 200
Tulsa, Oklahoma 74103
www.jrchilders.com



PROJECT NO:	17-06
DATE:	08/22/18
PROJECT NAME:	E0.41



CHEROKEE NATION ENTERTAINMENT
TAHLEQUAH CASINO
TAHLEQUAH, OKLAHOMA

PROJECT NO:	ADDENDUM #10
DATE:	08/22/18
PROJECT NAME:	E0.41

CHEROKEE NATION ENTERTAINMENT
TAHLEQUAH CASINO
TAHLEQUAH, OKLAHOMA

SHEET NOTES:

- PROVIDE ALL NECESSARY ACCESSORIES (DATA INJECTORS, CONNECTORS, END CAPS, ETC.) TO BE INSTALLED BY THE CONTRACTOR.
- IF ANY WORK IS TO BE DONE IN THE AV RACK ROOM, COORDINATE WORK WITH AV CONTRACTOR.

LIGHTING FIXTURE SCHEDULE

- FIXTURE SCHEDULE GENERAL NOTES:**
- FIXTURES SHALL HAVE APPROPRIATE U.L. LABEL (i.e., DAMP OR WET) AS REQUIRED BY CODES AND ORDINANCES.
 - PRIOR TO ORDERING ANY LIGHTING EQUIPMENT, COORDINATE ALL FIXTURE LOCATIONS WITH ARCHITECTURAL DRAWINGS AND ELECTRICAL DRAWINGS.
 - ALL LAMP BURNS SHALL BE PROVIDED AND INSTALLED ACCORDING TO THE ATTACHED FIXTURE SCHEDULE AND SPECIFICATIONS. ENSURE COMPATIBILITY BETWEEN FIXTURES, LAMPS, AND BALLASTS/DRIVERS.
 - CONTRACTOR SHALL VERIFY FIXTURE VOLTAGE AND CEILING TRIM COMPATIBILITY PRIOR TO ORDERING FIXTURE.
 - PROVIDE APPROVED FIRE RATED ENCLOSURES FOR ALL LIGHTING FIXTURES LOCATED IN FIRE RATED CEILING.
 - LIGHTING FIXTURE GAS FILL NUMBERS ARE LISTED TYPE ONLY. PROVIDE ALL NECESSARY ACCESSORIES AND HARDWARE AS REQUIRED FOR A COMPLETE AND FUNCTIONAL INSTALLATION.
 - ALL FIXTURES SHALL BE ORDERED WITH APPROPRIATE BALLASTS/DRIVERS THAT HAVE U.L. AND CDMA LABELS. ALL BALLASTS/DRIVERS SHALL CONFORM TO TITLE 24 AND/OR INTERNATIONAL ENERGY CONSERVATION CODE (IECC) (I.E. TANDERS) AS INDICATED ON THE PLANS.
 - UPON INITIAL ENERGIZING OF ALL NEW FLUORESCENT LAMPS, A CONTINUOUS PERIOD OF THIRTY (30) HOURS SHALL OCCUR PRIOR TO DE-ENERGIZING OF LAMPS FOR MANUFACTURER REQUIRED LAMP BURN-IN AND MAXIMUM LAMP LIFE.
 - ALL FLUORESCENT BALLASTS SHALL BE ELECTRONIC TYPE. PROVIDE END OF LIFE (EOL) SHUT-DOWN PROTECTION FOR COMPACT FLUORESCENT LAMPS.
 - ALL FLUORESCENT BALLASTS SHALL BE ORDERED WITH APPROPRIATE BALLASTS/DRIVERS THAT HAVE U.L. AND CDMA LABELS. ALL BALLASTS/DRIVERS SHALL CONFORM TO TITLE 24 AND/OR INTERNATIONAL ENERGY CONSERVATION CODE (IECC) (I.E. TANDERS) AS INDICATED ON THE PLANS.
 - PROVIDE CLEARANCES FROM COMBUSTIBLES, A MINIMUM OF 1/2" (OTHER THAN AT POINTS OF SUPPORT) AND 3" FROM INSULATION FOR RECESSED LIGHTING FIXTURES WHICH ARE NON-IC RATED.
 - FOR FIXTURES RECESSED IN SPACERS, USE 1/2" SPACER WITH A SUPPORT WIRE AS ATTACHED TO BUILDING FRAME IN ADDITION TO T-BAR CLIPS.

TYPE	DESCRIPTION AND MANUFACTURER	NOTES	TYPE	DESCRIPTION AND MANUFACTURER	NOTES
LED 120V 100W 1000	LED LINEAR STRIP VOLTAGE: 120V LED LAMP: MANUFACTURER: TRIGON (PANO) LINEAR ALLEGRO AC 30 8 RGB	◆	23 120V 600	TWIN HEAD PARKING LOT POLE LIGHT WITH 32'-6" MATCHING POLE VOLTAGE: 480V LED (INCLUDED) MANUFACTURER: INGRAM EDISON #GLEON-AL-10-LED-480-8V0	
LED 120V 100W 1000	LED FLEXIBLE LINEAR TAPE LIGHT - DRY LOCATION VOLTAGE: 120V LED LAMP: MANUFACTURER: INCOA LIGHT #STAR FLEX RGBW		23 480V 600	SINGLE HEAD ROADWAY POLE LIGHT WITH 32'-6" MATCHING POLE VOLTAGE: 480V LED (INCLUDED) MANUFACTURER: INGRAM EDISON #GLEON-AL-10-LED-480-1TR	
LED 120V 100W 1000	LED LINEAR STRIP VOLTAGE: 120V LED LAMP: MANUFACTURER: MODA LIGHT #AQUA FLEX RGBW		34 120V 200	UP LIGHTING LED FIXTURE FOR OUTDOORS VOLTAGE: 120/277V LED LAMP: MANUFACTURER: ELLIPTIK #S170-510R-S-X6-8-V0-S-35-00	
LED 120V 100W 1000	LINEAR EXTERIOR WALL GRAZE SYSTEM VOLTAGE: 120V LED (INCLUDED) LAMP: MANUFACTURER: COMALIGHT #ZEM-41-HO-CO-00H-S25-28A-X-F-RP-S3-X-E-24	PROVIDE FIXTURE AT ARCHITECTURAL ELEVATIONS.	35 120V 70	GROUND LIGHTING LED FIXTURE FOR OUTDOORS VOLTAGE: 120/277V LED (INCLUDED) MANUFACTURER: ELLIPTIK #S170-403A-S-X6-8-V0-S-35-00	
LED 120V 100W 1000	LINEAR EXTERIOR WALL GRAZE SYSTEM VOLTAGE: 120V LED (INCLUDED) LAMP: MANUFACTURER: LUMIPULSE #L03-HO-120-XX-40K-10X10-WM-MC-HO-E		35 120V 37	SURFACE MOUNTED SINGLE CIRCUIT TRACK WITH BLACK FINISH VOLTAGE: 120/277V LED (INCLUDED) LAMP: MANUFACTURER: T8D	
LED 120V 100W 1000	LINEAR EXTERIOR WALL GRAZE SYSTEM VOLTAGE: 120V LED (INCLUDED) LAMP: MANUFACTURER: #ADJUSTABLE GIMBLE WITH MINI DOWN LIGHT		35 120V 3	SINGLE FACE EXIT SIGN - BOH VOLTAGE: 120V/277V LED (INCLUDED) LAMP: MANUFACTURER: LITHONIA #RHS-W 3 R 120/277 EL N	
LED 120V 100W 1000	SINGLE HEAD PARKING LOT POLE LIGHT WITH 32'-6" MATCHING POLE VOLTAGE: 120V LED LAMP: MANUFACTURER: RSA MINI CROGMAN SERIES M.V. 307X2800		42 120V 3	SINGLE FACE EXIT SIGN - FOH VOLTAGE: 120V LED LAMP: MANUFACTURER: LITHONIA #RHS-W 3 R 120/277 EL N	
LED 120V 100W 1000	SINGLE HEAD PARKING LOT POLE LIGHT WITH 32'-6" MATCHING POLE VOLTAGE: 480V LED (INCLUDED) LAMP: MANUFACTURER: INGRAM EDISON #GLEON-AL-10-LED-480-1R		43 120V 7	DOUBLE FACE EXIT SIGN - FOH VOLTAGE: 120V LED LAMP: MANUFACTURER: LITHONIA #RHS-W 3 R 120/277 EL N	





**James R. Childers
Architect, Inc.**
100 South A Street
Tahlequah, Oklahoma 74464
www.jrchilders.com



msa
MECHANICAL CONTRACTORS
3701 E. SHAWNEE DRIVE SUITE 100
TALLEQUAH, OKLAHOMA 74464
PHONE: 581.462.1001
FAX: 581.462.1041



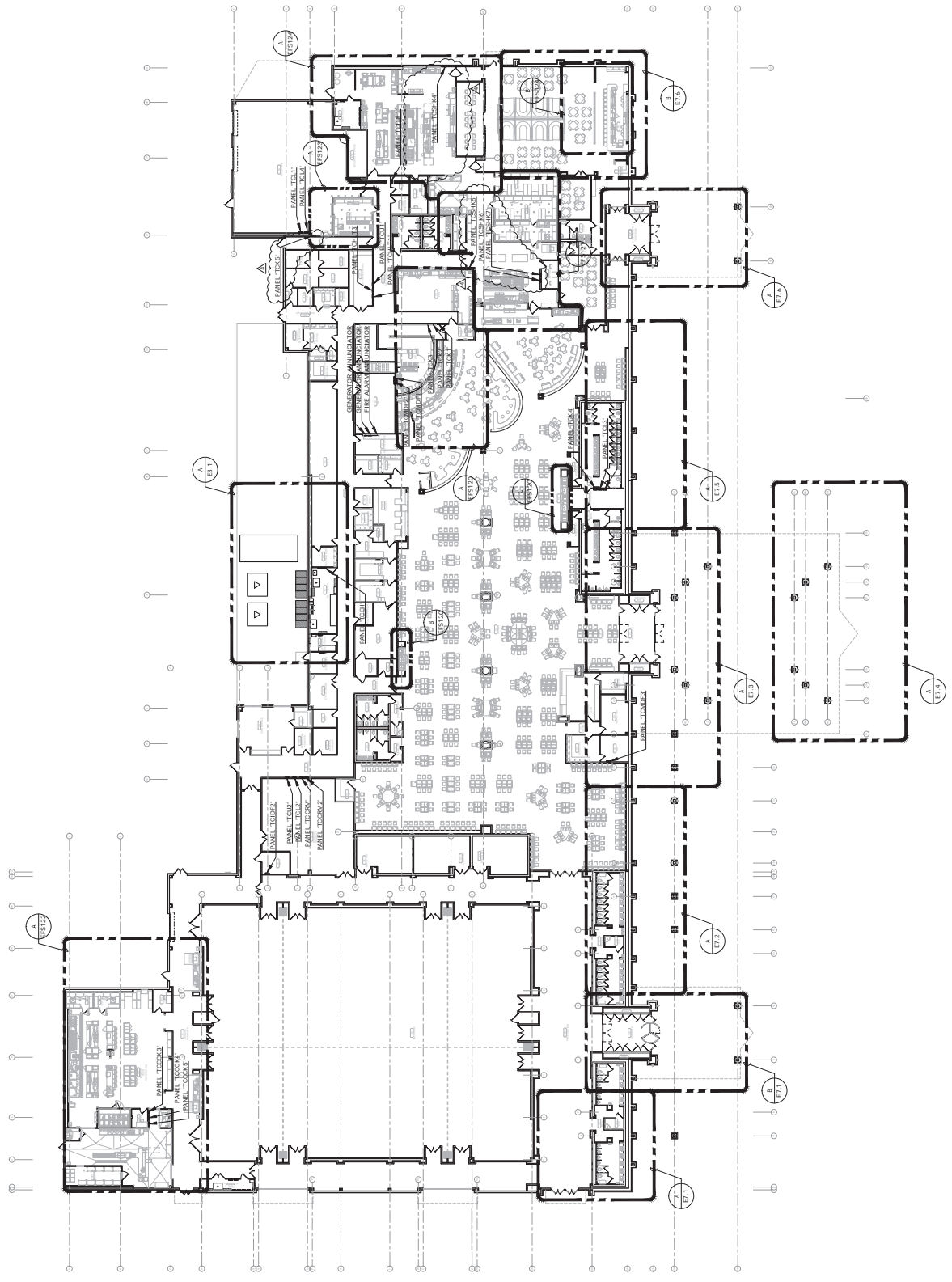
CHEROKEE NATION ENTERTAINMENT
TAHLEQUAH CASINO
TAHLEQUAH, OKLAHOMA

BID PACKAGE 02
(100% SET)

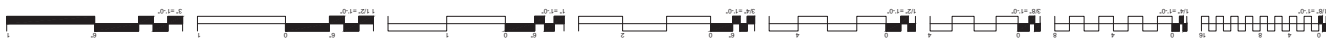
NO.	DESCRIPTION	DATE
1	ISSUED FOR BIDDING	07/20/2018
2	REVISION	
3	REVISION	
4	REVISION	
5	REVISION	
6	REVISION	
7	REVISION	
8	REVISION	
9	REVISION	
10	REVISION	

DATE: 08/27/18
DRAWING NO: 17-06
PROJECT NAME:

E1.0
ELECTRICAL OVERVIEW PLAN



A ELECTRICAL OVERVIEW PLAN
E1.0 1/8" = 1'-0"





**James R. Childers
Architect, Inc.**
1000 S. W. 10th Ave., Suite 200
Fort Lauderdale, FL 33304
www.jrchilders.com



CHEROKEE NATION ENTERTAINMENT
TAHLEQUAH CASINO
TAHLEQUAH, OKLAHOMA

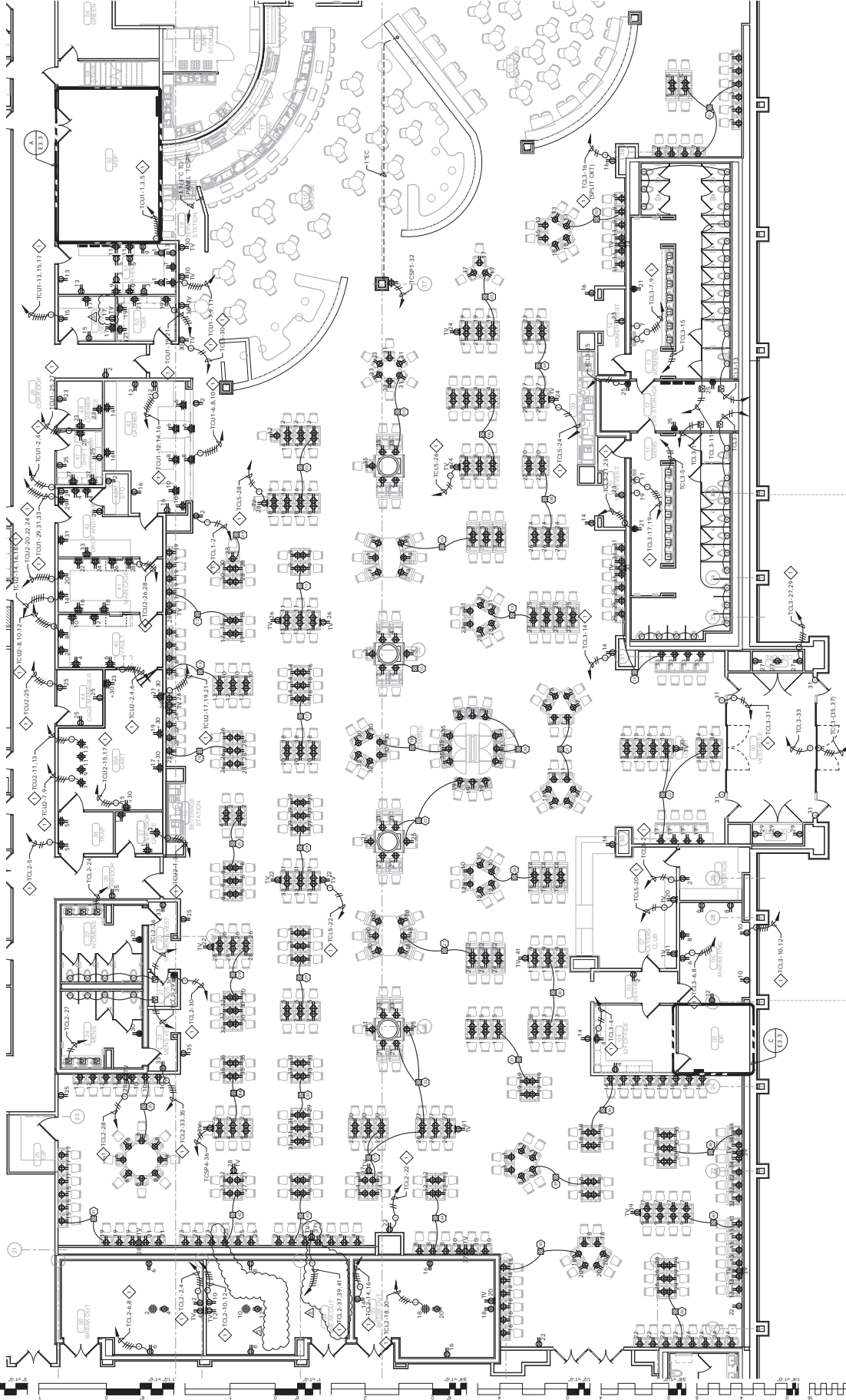
BID PACKAGE 02
(100% SET)

NO.	REVISION	DATE
1	ISSUED FOR BIDDING	03/27/18
2	REVISED PER COMMENTS	04/10/18
3	REVISED PER COMMENTS	04/10/18
4	REVISED PER COMMENTS	04/10/18

DATE: 03/27/18
DRAWING NO: 17-06
PROJECT NAME: E1.1

ENLARGED POWER PLAN - GAMING

- GENERAL NOTES:**
1. VERIFY EXACT LOCATION OF ALL OUTLETS WITH ARCHITECT PRIOR TO ROUGH-IN.
- SHEET NOTES:**
- ◇ EXTRA AND CONNECT CONDUITING FROM JUNCTION BOX TO OUTLETS IN AREA WITH SAME CIRCUIT NUMBERS, ROUTE #12 CONDUCTORS (MINIMUM) THROUGHOUT, UNLESS NOTED OTHERWISE.



ENLARGED POWER PLAN - GAMING
E1.1
1/4" = 1'-0"
0 2 4 6 8 10
NORTH



James R. Childers
 Architect, Inc.
 100 South A-1, Suite 200
 Fort Lauderdale, FL 33309
 www.jrchilders.com



TAHLEQUAH, OKLAHOMA
**CHEROKEE NATION ENTERTAINMENT
 TAHLEQUAH CASINO**

BID PACKAGE 05

NO.	DESCRIPTION
1	MECHANICAL
2	ELECTRICAL
3	PLUMBING
4	CONCRETE
5	FINISHES
6	GENERAL
7	MECHANICAL
8	ELECTRICAL
9	PLUMBING
10	CONCRETE
11	FINISHES
12	GENERAL

DATE: 05/03/18
 DRAWING NO: 17-06
 PROJECT NAME:

E1.2

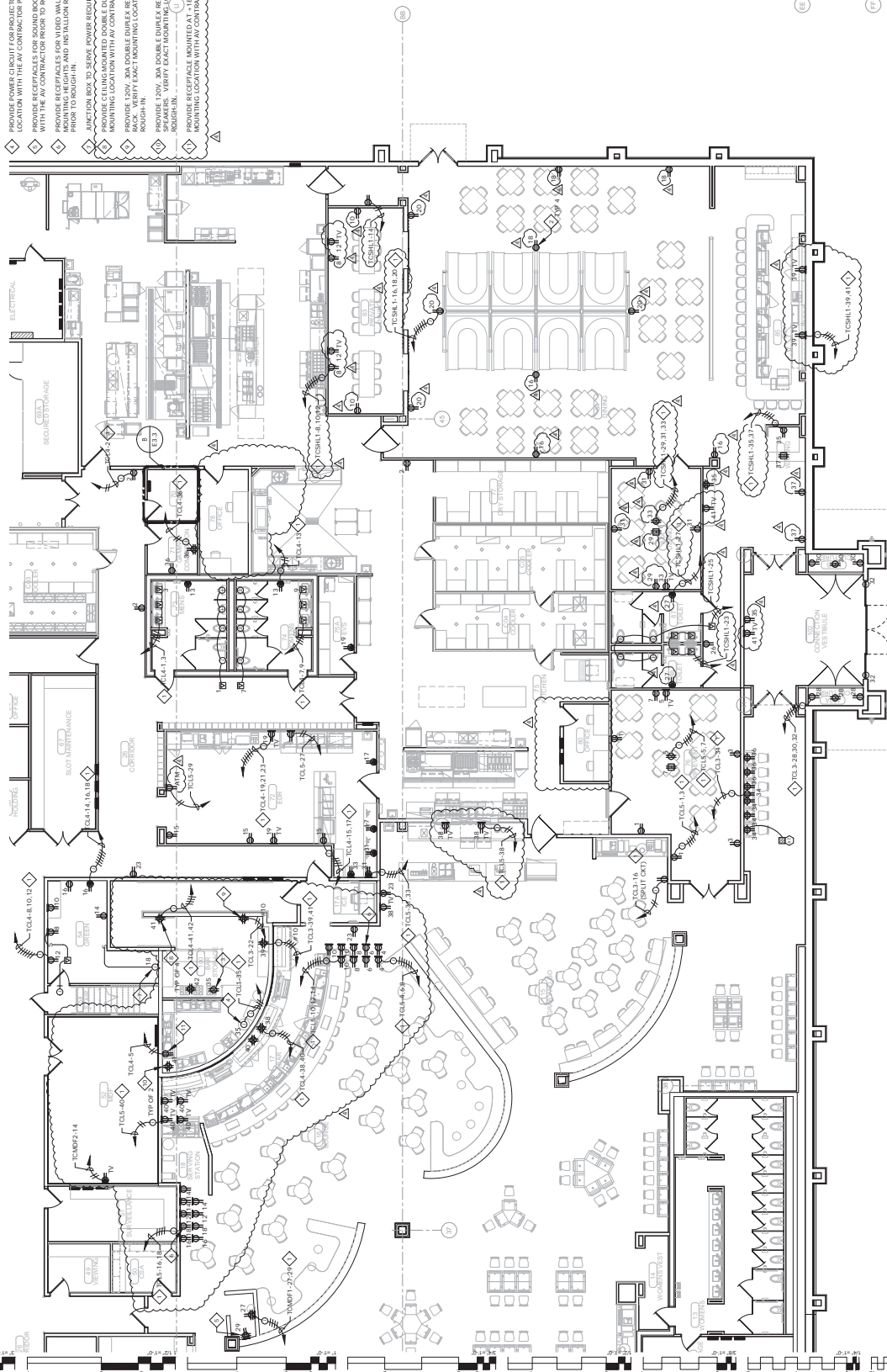
ENLARGED POWER
 PLAN - SOUTH

GENERAL NOTES:

1. VERIFY EXACT LOCATION OF ALL OUTLETS WITH ARCHITECT PRIOR TO ROUGH-IN.

SHEET NOTES:

- ◆ EXTRA AND CONNECT CHANGING FROM JUNCTION BOX TO OUTLETS IN AREA WITH SAME CIRCUIT NUMBERS, ROUTE #12 CONDUCTORS (MINIMUM) THROUGHOUT, UNLESS NOTED OTHERWISE.
- ◆ ALL WORK SHALL BE IN ACCORDANCE WITH THE NATIONAL ELECTRICAL CODE (NEC) AND INSTALLATION WITH THE ALLOWANCE CONTRACTOR PRIOR TO ROUGH-IN.
- ◆ PROVIDE RECEPTACLE FOR STAGE PROJECTOR. COORDINATE RECEPTACLE LOCATION AND INSTALLATION REQUIREMENTS WITH THE AV CONTRACTOR PRIOR TO ROUGH-IN.
- ◆ PROVIDE POWER CIRCUIT FOR PROJECTOR SCREEN. COORDINATE JUNCTION BOX LOCATION WITH THE AV CONTRACTOR PRIOR TO ROUGH-IN.
- ◆ PROVIDE RECEPTABLES FOR SOUND/BROTH. COORDINATE RECEPTABLE LOCATIONS AND INSTALLATION REQUIREMENTS WITH THE AV CONTRACTOR PRIOR TO ROUGH-IN.
- ◆ PROVIDE RECEPTABLES FOR VIDEO WALL. COORDINATE RECEPTABLE LOCATIONS AND INSTALLATION REQUIREMENTS WITH THE AV CONTRACTOR PRIOR TO ROUGH-IN.
- ◆ JUNCTION BOX TO SERVE POWER REQUIREMENTS FOR LIFT STATION. PROVIDE 120V, 30A DOUBLE BREAK RECEPTABLE MOUNTED IN CEILING FOR ROUGH-IN. VERIFY EXACT MOUNTING LOCATION WITH AV CONTRACTOR PRIOR TO ROUGH-IN.
- ◆ PROVIDE RECEPTABLE FOR STAGE LIGHTING. VERIFY EXACT MOUNTING LOCATION WITH AV CONTRACTOR PRIOR TO ROUGH-IN.
- ◆ PROVIDE RECEPTABLE MOUNTED AT 1' AFF FOR SUBWOOFER. VERIFY EXACT MOUNTING LOCATION WITH AV CONTRACTOR PRIOR TO ROUGH-IN.



A ENLARGED POWER PLAN - SOUTH
 E1.2 1/4" = 1'-0"



**James R. Childers
Architect, Inc.**
100 South Park Avenue
Tahlequah, Oklahoma 74464
www.jrchilders.com



TAHLEQUAH, OKLAHOMA
**CHEROKEE NATION ENTERTAINMENT
TAHLEQUAH CASINO**

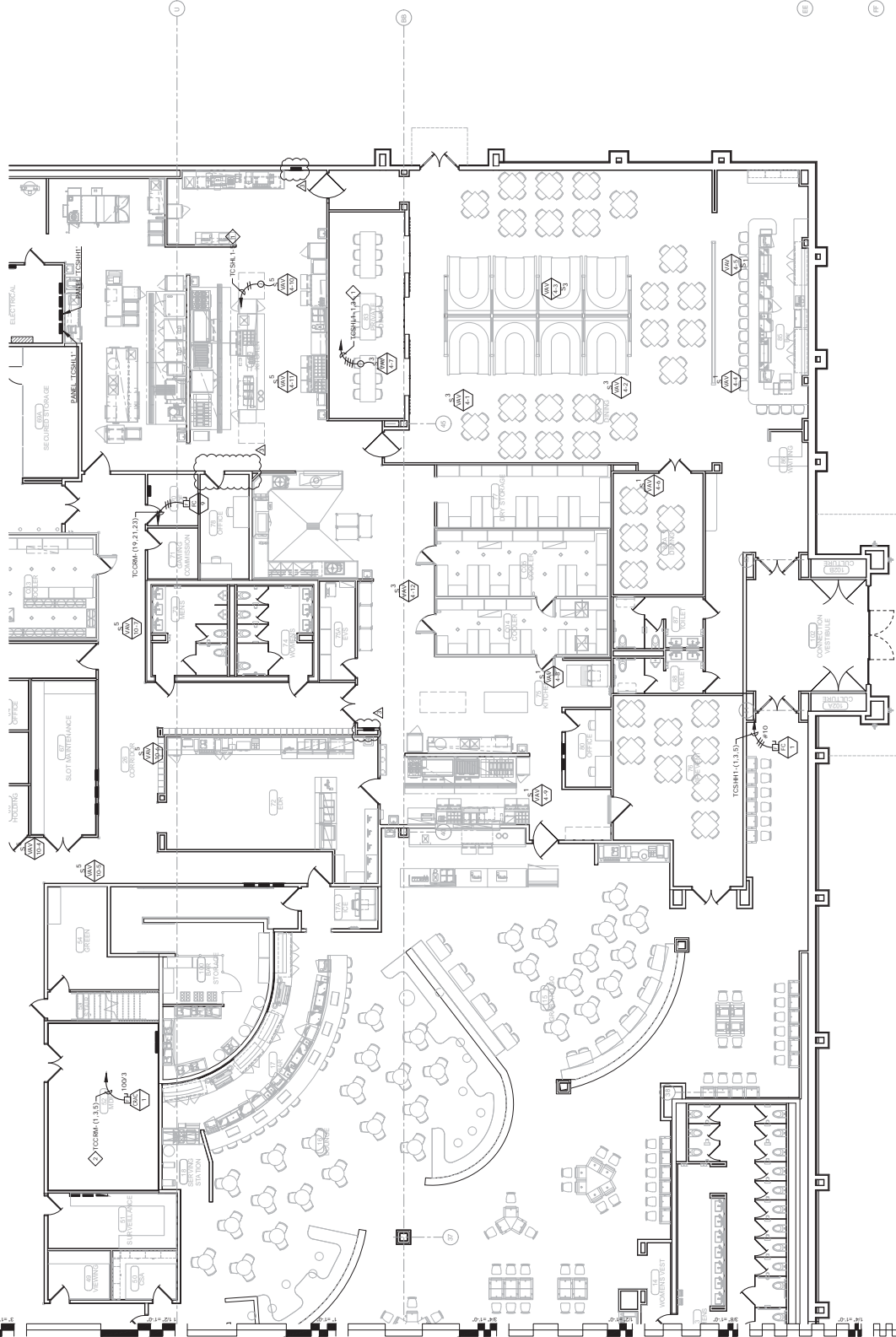
BID PACKAGE 05

NO.	DESCRIPTION	DATE
1	ISSUED FOR BIDDING	11/14/18
2	REVISED	
3	REVISED	
4	REVISED	

DATE: 05/03/18
DRAWING NO.: 17-06
PROJECT: E.1.2M
ENLARGED MECHANICAL POWER PLAN - SOUTH

GENERAL NOTES:
1. VERIFY EXACT LOCATION OF ALL MECHANICAL EQUIPMENT WITH MECHANICAL CONTRACTOR PRIOR TO ROUGH-IN.

SHEET NOTES:
1. EXTEND AND CONNECT CIRCUITING FROM JUNCTION BOX TO OUTLETS IN AREA WITH THE FOLLOWING EXCEPTIONS: ROOM #175 CONDUIT FUSE (MINIMUM) THROUGHOUT, UNLESS NOTED OTHERWISE.
2. 11/4" FC - 3/8" x 1/8" OR.



A ENLARGED MECHANICAL POWER PLAN - SOUTH
E1.2M
1/4" = 1'-0"
10'
8'
6'
4'
2'
0'
NORTH



James R. Childers
Architect, Inc.
Professional Seal
1701 South Main Street
Tahlequah, Oklahoma 74464
www.jrchilders.com



CHEROKEE NATION ENTERTAINMENT
TAHLEQUAH CASINO
TAHLEQUAH, OKLAHOMA

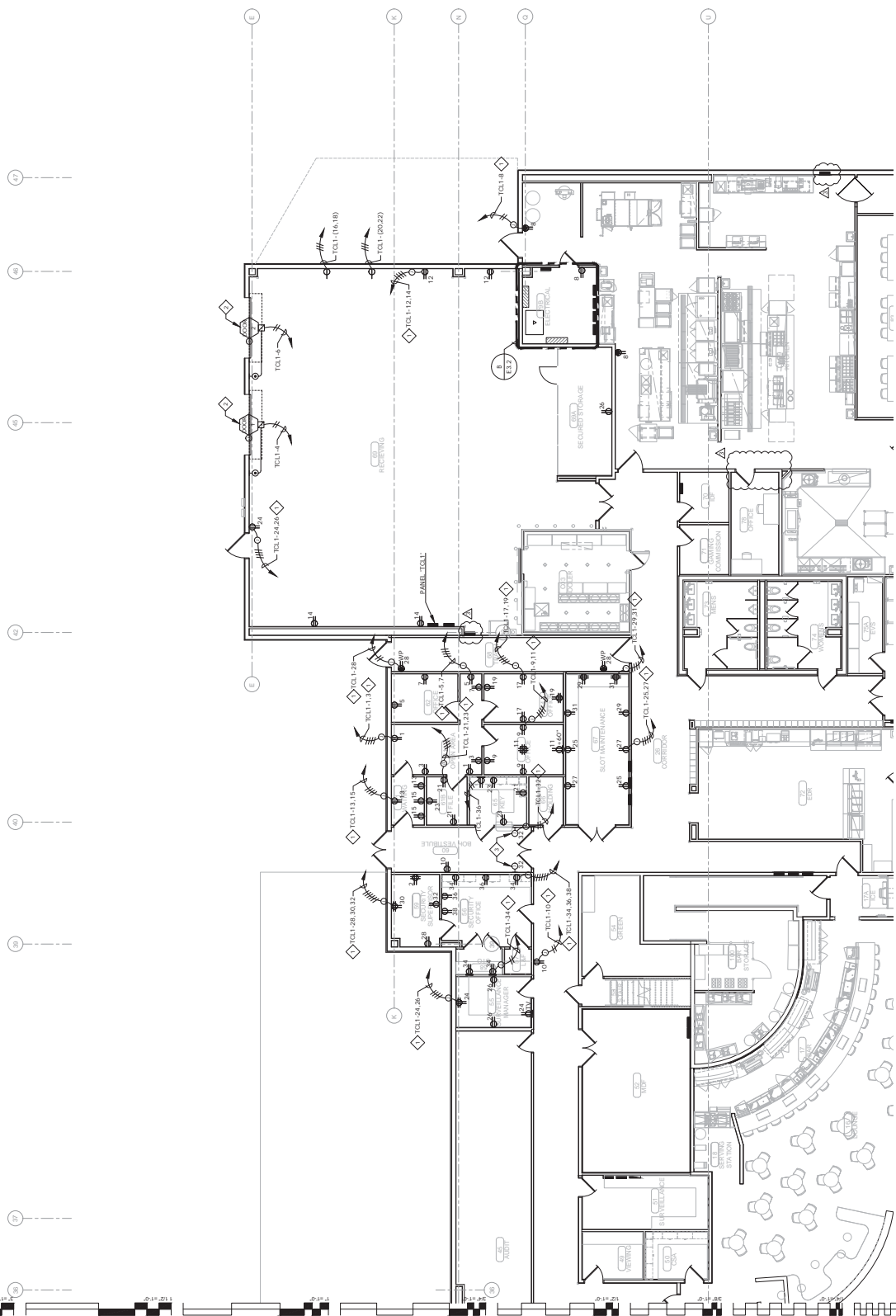
BID PACKAGE 05

NO.	DESCRIPTION	DATE
1	ISSUED FOR BIDDING	07/20/2018
2	REVISION	
3	REVISION	
4	REVISION	

DATE: 06/03/18
DRAWING NO: 17-06
PROJECT NAME:

E1.3
ENLARGED POWER PLAN - BOH

- GENERAL NOTES:**
- VERIFY EXACT LOCATION OF ALL OUTLETS WITH ARCHITECT PRIOR TO ROUGH-IN.
- SHEET NOTES:**
- EXTEND AND CONNECT CIRCUITING FROM JUNCTION BOX TO OUTLETS IN AREA WITH SAME CIRCUIT NUMBERS, ROUTE #12 CONDUCTORS (MINIMUM) THROUGHOUT, UNLESS NOTED OTHERWISE.
 - COORDINATE WITH MECHANICAL ROOM AND UP/DOWN CONTROLS PER MANUFACTURER'S INSTALLATION DRAWINGS.
 - PROVIDE RECEPTACLE FOR TIME CLOCK. COORDINATE RECEPTACLE LOCATION AND INSTALLATION HEIGHT WITH THE OWNER PRIOR TO ROUGH-IN.



E1.3
ENLARGED POWER PLAN - BOH
1/4" = 1'-0"
NORTH



**James R. Childers
Architect, Inc.**
100 South Main Street
Ft. Smith, AR 72301
www.jrchilders.com



CHEROKEE NATION ENTERTAINMENT
TAHLEQUAH CASINO
TAHLEQUAH, OKLAHOMA

PROJECT NO.: BID PACKAGE 05

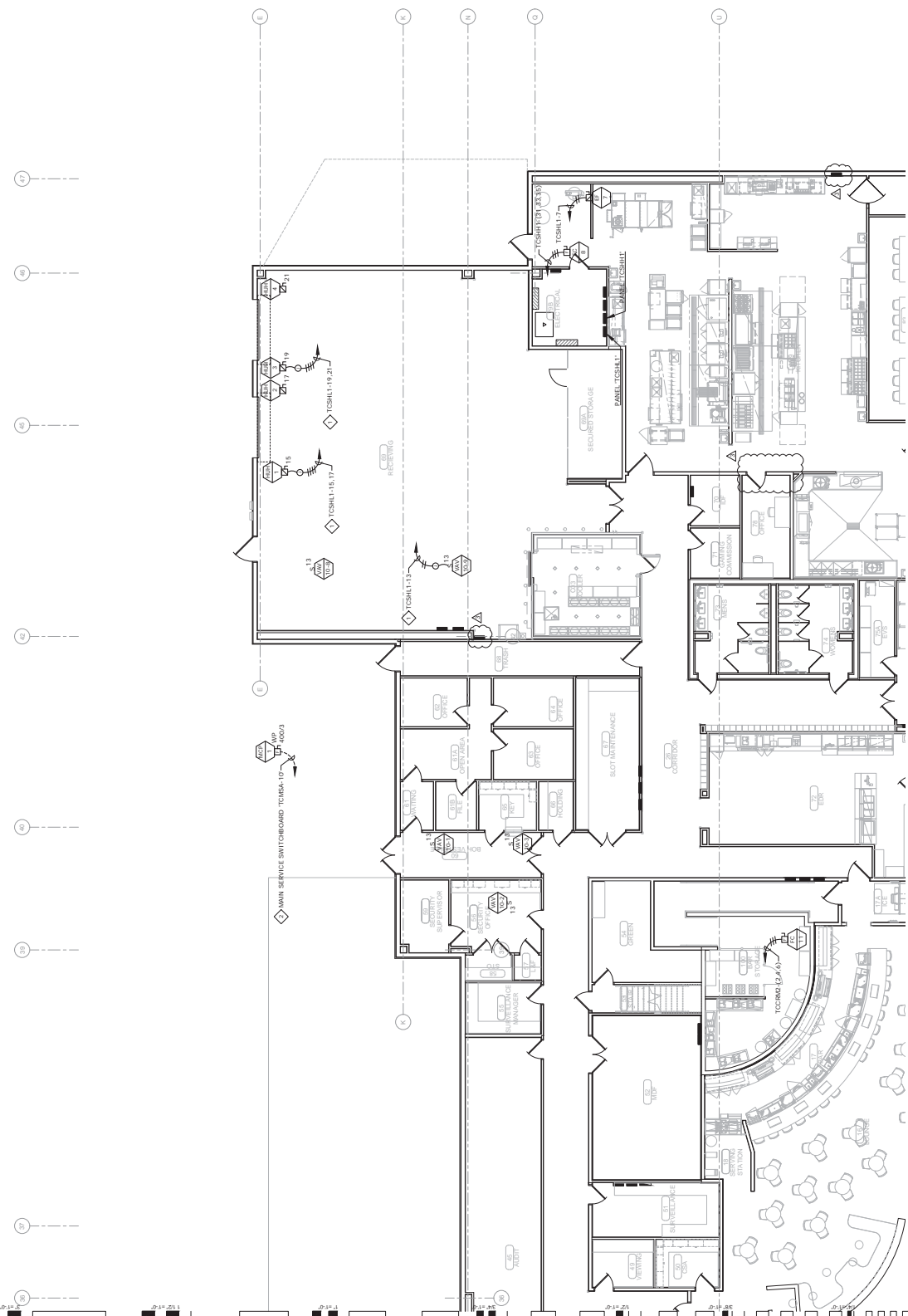
NO.	REVISION	DATE
1	ISSUED FOR BIDDING	08/03/18
2	REVISED PER COMMENTS	08/03/18
3	REVISED PER COMMENTS	08/03/18
4	REVISED PER COMMENTS	08/03/18

DATE: 08/03/18
DRAWING NO.: 17-06
PROJECT NAME: E1.3M

ENLARGED MECHANICAL POWER PLAN - BOH

GENERAL NOTES:
1. VERIFY EXACT LOCATION OF ALL MECHANICAL EQUIPMENT WITH MECHANICAL CONTRACTOR PRIOR TO ROUGH-IN.

SHEET NOTES:
◆ EXTEND AND CONNECT CIRCUITING FROM JUNCTION BOX TO OUTLETS IN AREA WITH NOTES. SEE NOTES, NOTE #12 CONDUIT TYPE (MINIMUM) THROUGHOUT, UNLESS NOTED OTHERWISE.
◆ REFER TO SHEET E0.10 FOR ADDITIONAL REQUIREMENTS.



A ENLARGED MECHANICAL POWER PLAN - BOH
E1.3M
1/8" = 1'-0"



**James R. Childers
Architect, Inc.**
140 South A-12 Street
Tahlequah, Oklahoma 74464
www.jrchilders.com



TAHLEQUAH, OKLAHOMA
CHEROKEE NATION ENTERTAINMENT
TAHLEQUAH CASINO

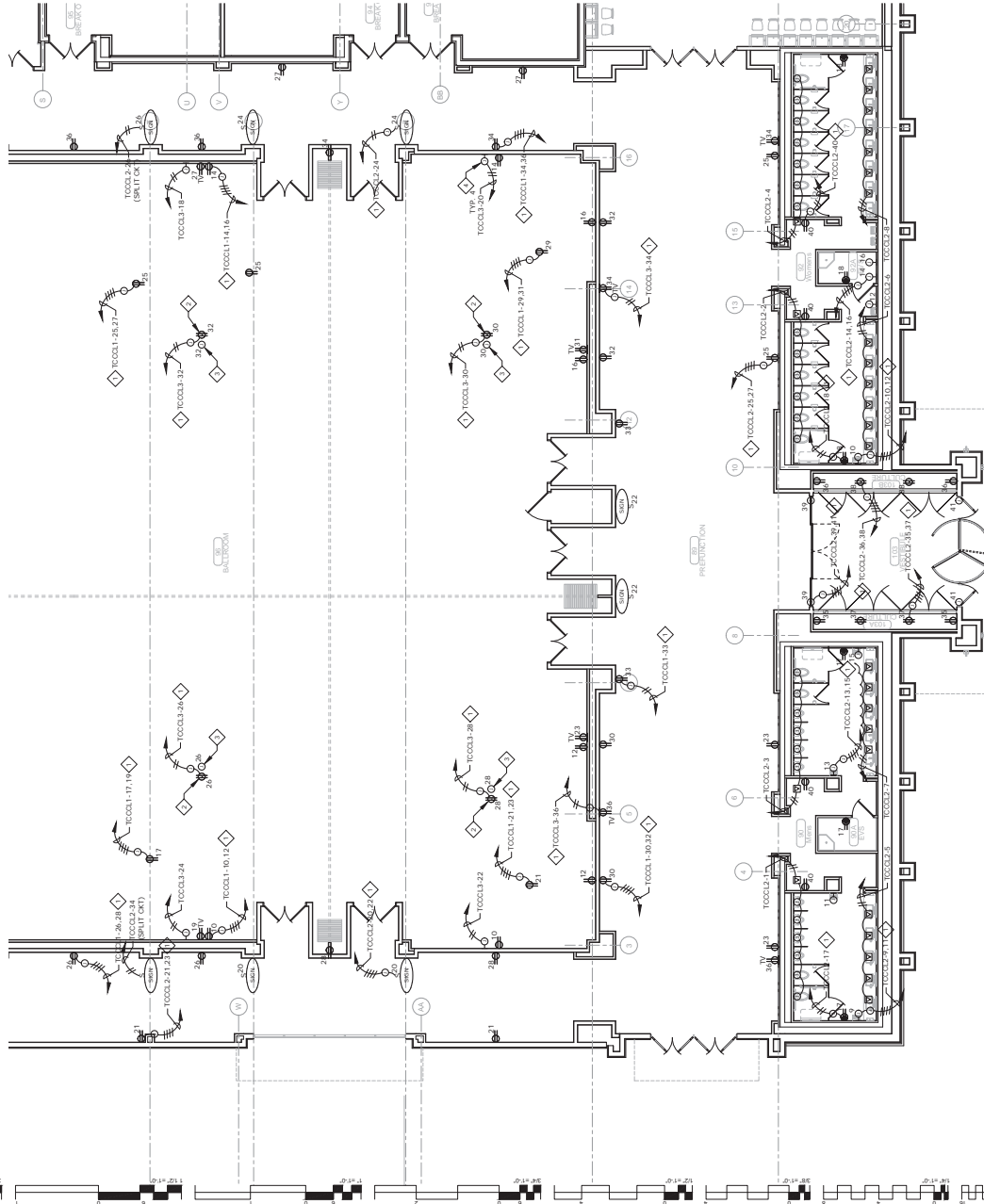
BID PACKAGE 05

NO.	DESCRIPTION	DATE
1	ISSUED FOR BIDDING	05/14/2018
2	REVISION	
3	REVISION	
4	REVISION	
5	REVISION	

DATE: 05/03/18
DRAWING NO.: 17-06
PROJECT NAME:

E1.5
ENLARGED POWER PLAN - NORTH

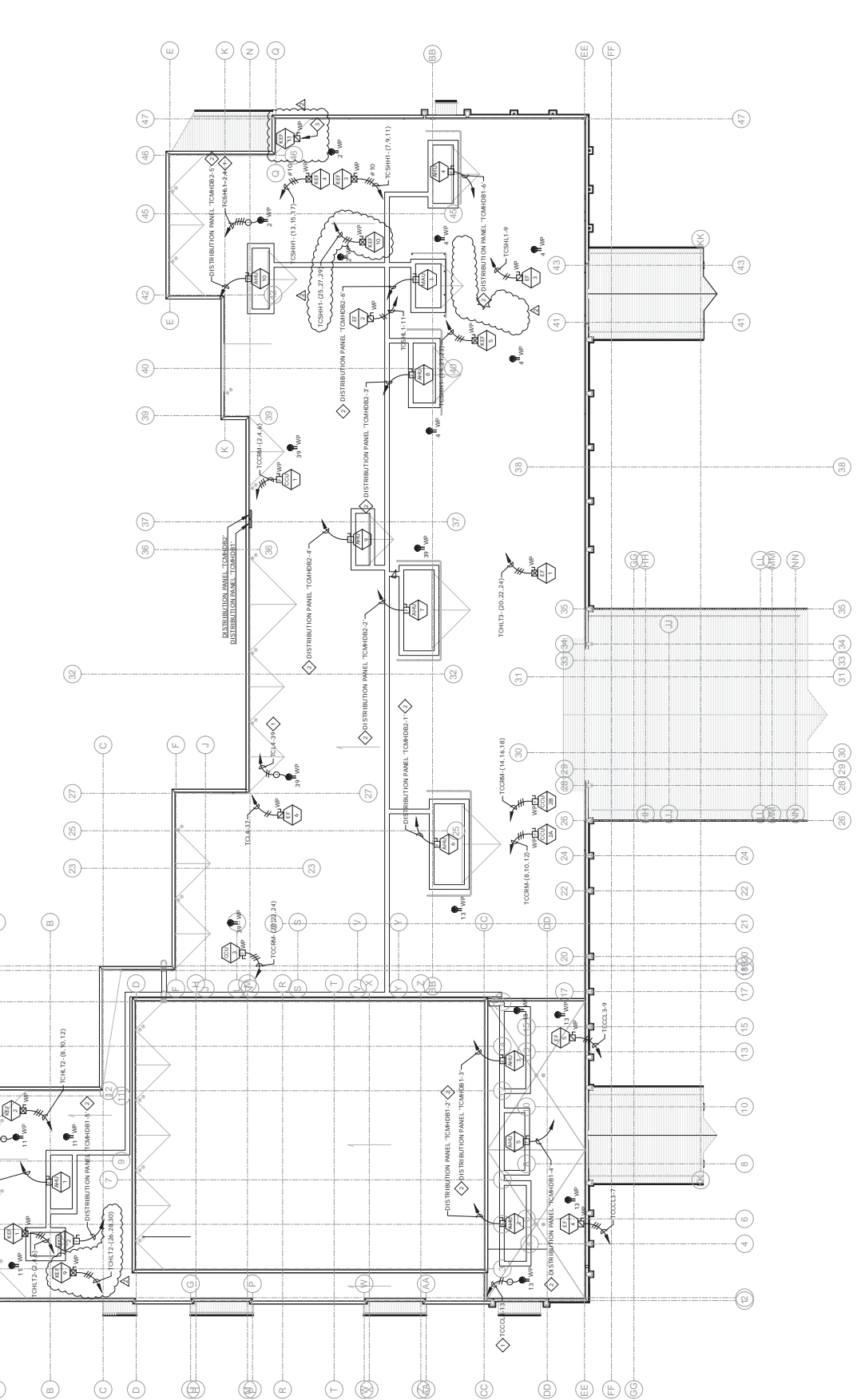
- GENERAL NOTES:**
- VERIFY EXACT LOCATION OF ALL OUTLETS WITH ARCHITECT PRIOR TO ROUGH-IN.
- SHEET NOTES:**
- ◇ EXTEND AND CONNECT CONDUITING FROM JUNCTION BOX TO OUTLETS IN AREA WITH SAME CIRCUIT NUMBERS, ROUTE #12 CONDUCTORS (MINIMUM) THROUGHOUT, UNLESS OTHERWISE NOTED.
 - ◇ PROVIDE CONDUITING FROM JUNCTION BOX TO OUTLETS IN AREA WITH SAME CIRCUIT NUMBERS, ROUTE #12 CONDUCTORS (MINIMUM) THROUGHOUT, UNLESS OTHERWISE NOTED.
 - ◇ PROVIDE CONDUITING FROM JUNCTION BOX TO OUTLETS IN AREA WITH SAME CIRCUIT NUMBERS, ROUTE #12 CONDUCTORS (MINIMUM) THROUGHOUT, UNLESS OTHERWISE NOTED.
 - ◇ PROVIDE CONDUITING FROM JUNCTION BOX TO OUTLETS IN AREA WITH SAME CIRCUIT NUMBERS, ROUTE #12 CONDUCTORS (MINIMUM) THROUGHOUT, UNLESS OTHERWISE NOTED.
 - ◇ PROVIDE CONNECTION TO CEILING RECESSED PROJECTOR SCREEN - COORDINATE WITH THE AV CONSULTANT PRIOR TO ROUGH-IN.
 - ◇ PROVIDE CONNECTION TO PROJECTOR SCREEN COORDINATE CONNECTION LOCATION AND INSTALLATION REQUIREMENTS WITH THE AV CONSULTANT PRIOR TO ROUGH-IN.



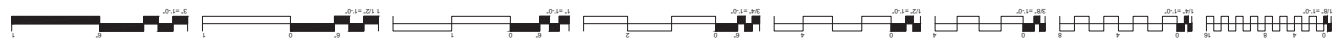
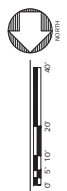
A ENLARGED POWER PLAN - NORTH
E1.5
1/8" = 1'-0"

NO.	REVISION
1	ISSUED FOR CONSTRUCTION
2	REVISED
3	REVISED

- GENERAL NOTES:**
- VERIFY EXACT LOCATION OF ALL MECHANICAL EQUIPMENT WITH MECHANICAL CONTRACTOR PRIOR TO ROOF-IN.
- SHEET NOTES:**
- EXTEND AND CONNECT CIRCUITING FROM JUNCTION BOX TO OUTLETS IN AREA WITH DISTRIBUTION PANELS. NOTE #12 CONDUIT (MINIMUM) THROUGHOUT, UNLESS NOTED OTHERWISE.
 - REFER TO SHEET E0.12 FOR ADDITIONAL REQUIREMENTS.
 - POWER TO PAN TO OPERATE AS SHOWN BELOW. REFER TO SHEET E0.12-1, FOOD SERVICE ELECTRICAL CONNECTION E1B FOR ADDITIONAL REQUIREMENTS.



A POWER PLAN - ROOF
E1.6 1" = 20' 0"





**James R. Childers
Architect, Inc.**
1000 S. W. 10th Ave., Suite 200
Fort Lauderdale, FL 33304
www.jrchilders.com



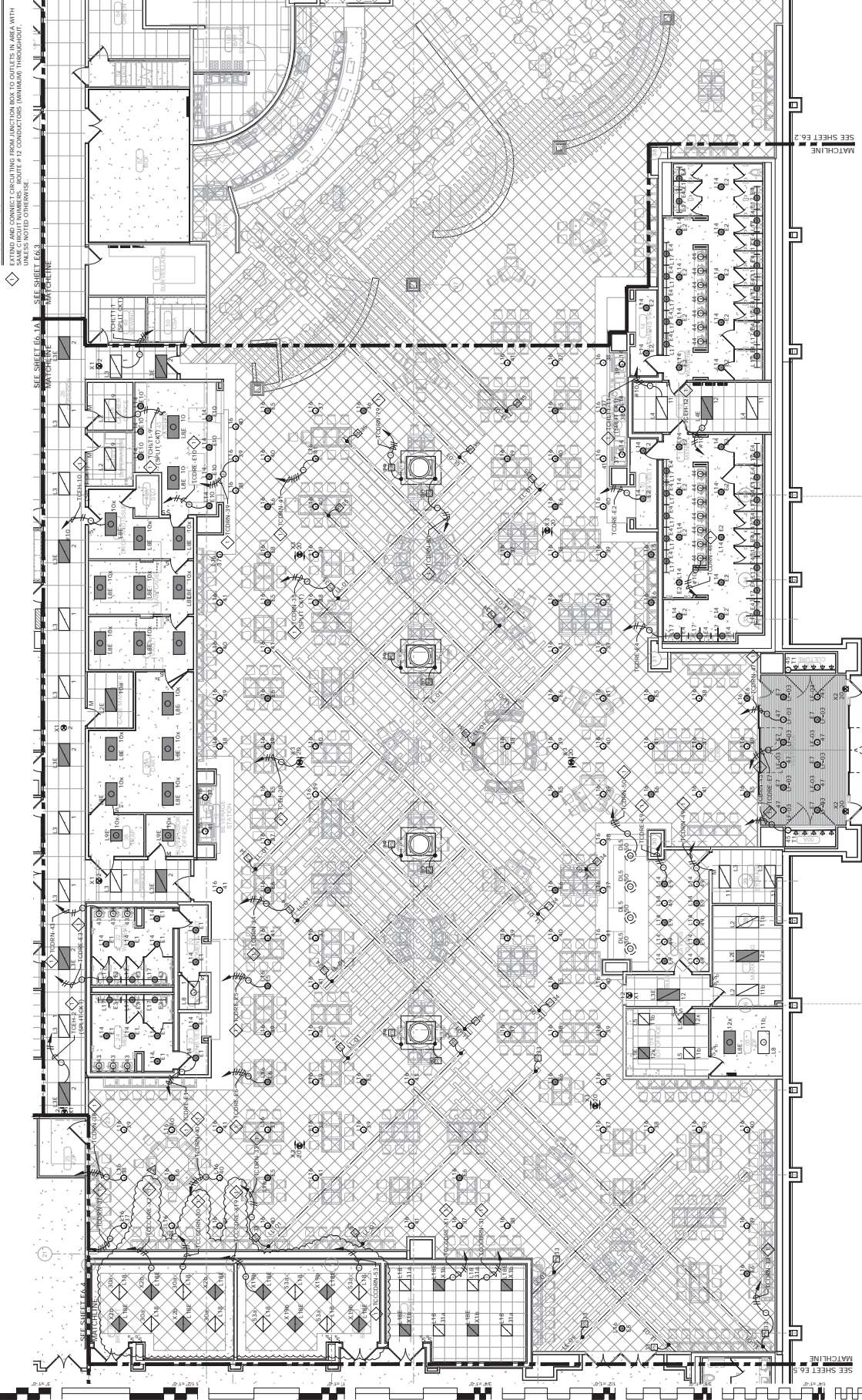
CHEROKEE NATION ENTERTAINMENT
TAHLEQUAH CASINO
TAHLEQUAH, OKLAHOMA

BID PACKAGE 05

NO.	DESCRIPTION	QUANTITY	UNIT	AMOUNT
1	TAHLEQUAH CASINO			
2	MECHANICAL			
3	ELECTRICAL			
4	PLUMBING			
5	MECHANICAL			
6	ELECTRICAL			
7	PLUMBING			

DATE: 05/03/18
DRAWING NO.: 17-06
PROJECT NAME:
E6.1
ENLARGED LIGHTING PLAN - GAMING

- GENERAL NOTES:**
1. REFER TO SHEET E6.1A FOR LOCATION OF PANEL TOWER.
 2. REFER TO SHEET E6.2 FOR LOCATION OF PANEL TOWER.
 3. PROVIDE CONSTANT NOT TO ALL LIGHT FIXTURES WITH INTEGRAL EMERGENCY BATTERY.
- SHEET NOTES:**
- ◇ EXTEND AND CONNECT CIRCUITING FROM JUNCTION BOX TO OUTLETS IN AREA WITH NAME OF CIRCUIT NUMBER AND ROUTE # TO CONDUCTORS (MINIMUM) THROUGHOUT.





James R. Childers
Architect, Inc.
Professional Seal
1700 South Main Street
Tahlequah, Oklahoma 74464
www.jrchilders.com



TAHLEQUAH, OKLAHOMA
CHEROKEE NATION ENTERTAINMENT
TAHLEQUAH CASINO

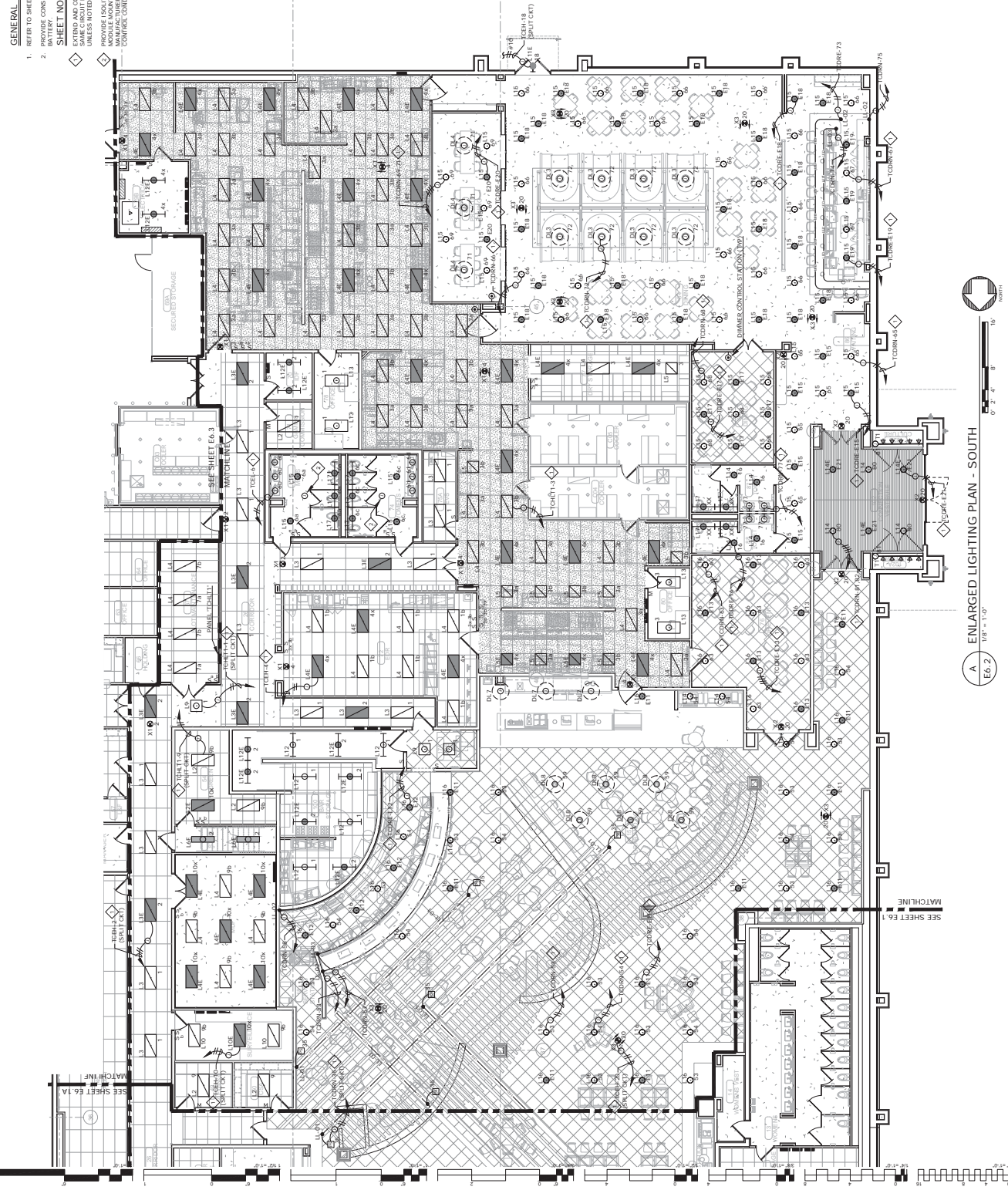
BID PACKAGE 05

NO.	DESCRIPTION	DATE
1	ISSUED	
2	REVISED	
3	REVISED	
4	REVISED	

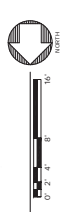
DATE	DESCRIPTION
05/03/18	17-06
PROJECT NO.	E6.2

ENLARGED LIGHTING PLAN - SOUTH

- GENERAL NOTES:**
- REFER TO SHEET EA-1A FOR LOCATION OF PANELS, TECH. AND TIECL. BATTERY
 - PROVIDE CONSTANT NOT TO ALL LIGHT FIXTURES WITH INTEGRAL EMERGENCY BATTERY
- SHEET NOTES:**
- CHINA WIREWAY WITH 1/2" MIN. THICKNESS WITH 1/2" MIN. WITH SAEIC CLOUT NUMBERS. ROUTE AT 1/2" CONDUITS, (BANDAGED THROUGHOUT) UNLESS NOTED OTHERWISE.
 - PROVIDE 150LUF EPC-94-120V OR APPROVED EQUIVALENT. TRANSFER CONTROL MANUFACTURER'S INSTALLATION INSTRUCTION. PROVIDE ALL NECESSARY POWER AND CONTROL CONDUIT AND WIRING FOR A COMPLETE AND OPERABLE SYSTEM.



REVISIONS
DATE
DESCRIPTION



E6.2
1/8" = 1'-0"
ENLARGED LIGHTING PLAN - SOUTH



**James R. Childers
Architect, Inc.**
100 South Main Street
Fifth Floor, A12200
Tahlequah, Oklahoma 74464
www.jrchilders.com



TAHLEQUAH, OKLAHOMA
CHEROKEE NATION ENTERTAINMENT
TAHLEQUAH CASINO

PROJECT NAME: **BID PACKAGE 05**

NO.	DESCRIPTION	DATE
1	ISSUED FOR BIDDING	07/20/18
2	REVISED	
3	REVISED	
4	REVISED	

DATE: 08/03/18
DRAWING NO.: 17-06
PROJECT NAME:

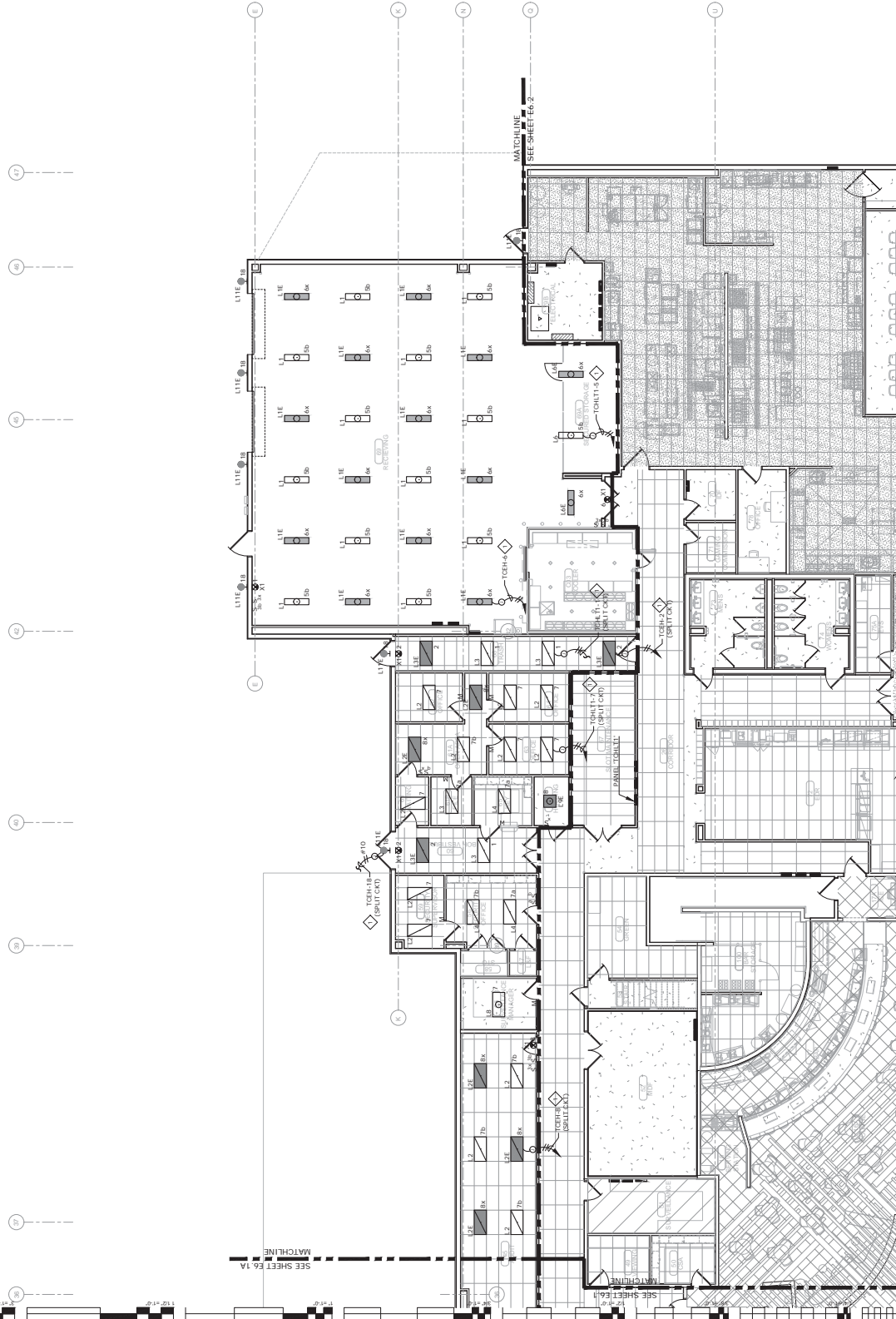
E6.3
ENLARGED LIGHTING PLAN - BOH

GENERAL NOTES:

1. REFER TO SHEET EA-1A FOR LOCATION OF PANEL, TCEHY.
2. PROVIDE CONSTANT NOT TO ALL LIGHT FIXTURES WITH INTEGRAL EMERGENCY BATTERY.

SHEET NOTES:

1. EXTEND AND CONNECT CIRCUITING FROM JUNCTION BOX TO OUTLETS IN AREA WITH CONSTANT NOT TO ALL LIGHT FIXTURES WITH INTEGRAL EMERGENCY BATTERY, UNLESS NOTED OTHERWISE.



**James R. Childers
Architect, Inc.**
100 South Main Street
Fifth Floor, A12200
Tahlequah, Oklahoma 74464
www.jrchilders.com

TAHLEQUAH, OKLAHOMA
CHEROKEE NATION ENTERTAINMENT
TAHLEQUAH CASINO

PROJECT NAME: **BID PACKAGE 05**

NO.	DESCRIPTION	DATE
1	ISSUED FOR BIDDING	07/20/18
2	REVISED	
3	REVISED	
4	REVISED	

DATE: 08/03/18
DRAWING NO.: 17-06
PROJECT NAME:

E6.3
ENLARGED LIGHTING PLAN - BOH



**James R. Childers
Architect, Inc.**
100 South Main Street
Tahlequah, Oklahoma 74464
www.jrchilders.com



TAHLEQUAH, OKLAHOMA
**CHEROKEE NATION ENTERTAINMENT
TAHLEQUAH CASINO**

BID PACKAGE 05

NO.	DESCRIPTION
1	GENERAL CONTRACTOR
2	ELECTRICAL CONTRACTOR
3	MECHANICAL CONTRACTOR
4	PLUMBING CONTRACTOR
5	PAINTING CONTRACTOR
6	CONCRETE CONTRACTOR
7	GLASS CONTRACTOR
8	IRONWORK CONTRACTOR
9	STEEL ERECTION CONTRACTOR
10	WELDING CONTRACTOR
11	ROOFING CONTRACTOR
12	MECHANICAL CONTRACTOR
13	PLUMBING CONTRACTOR
14	PAINTING CONTRACTOR
15	CONCRETE CONTRACTOR
16	GLASS CONTRACTOR
17	IRONWORK CONTRACTOR
18	STEEL ERECTION CONTRACTOR
19	WELDING CONTRACTOR
20	ROOFING CONTRACTOR

DATE: 08/03/18
PROJECT NO: 17-06

E6.4

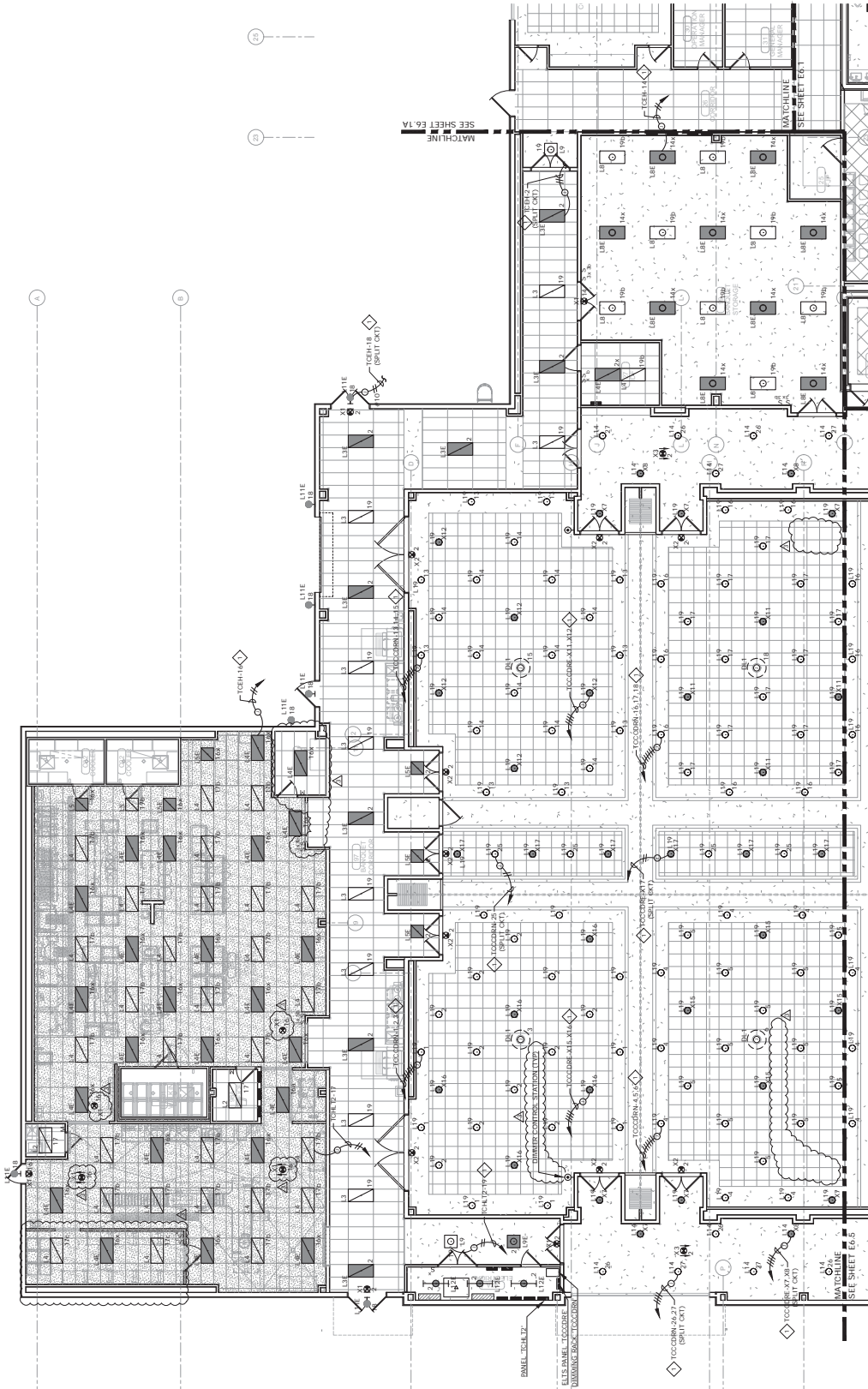
ENLARGED LIGHTING
PLAN - BANQUET BOH

GENERAL NOTES:

1. REFER TO SHEET EA-1A FOR LOCATION OF PANEL TCB#1.
2. REFER TO SHEET EA-2 FOR LOCATION OF PANEL TCB#1T.
3. PROVIDE CONSTANT HOT TO ALL LIGHT FIXTURES WITH INTEGRAL EMERGENCY BATTERY.

SHEET NOTES:

EXTING AND CONNECT CIRCUITING FROM JUNCTION BOX TO OUTLETS IN AREA WITH SAME CIRCUIT NUMBER AND ROUTE #12 CONDUCTORS (MINIMUM) THROUGHOUT. UNLESS NOTED OTHERWISE.



E6.4
ENLARGED LIGHTING PLAN - BANQUET BOH
1/8" = 1'-0"
0' 2' 4' 6' 8' 10'





**James R. Childers
Architect, Inc.**
110 South Park Avenue
Tahlequah, Oklahoma 74464
www.jrchilders.com



TAHLEQUAH, OKLAHOMA
**CHEROKEE NATION ENTERTAINMENT
TAHLEQUAH CASINO**

PROJECT NO: **BID PACKAGE 05**

NO.	REVISION	DATE
1	ISSUED FOR BIDDING	07/11/18
2	REVISED PER COMMENTS	07/11/18
3	REVISED PER COMMENTS	07/11/18
4	REVISED PER COMMENTS	07/11/18

DATE: **05/03/18**
DRAWING NO: **17-06**
PROJECT NAME:

E6.5

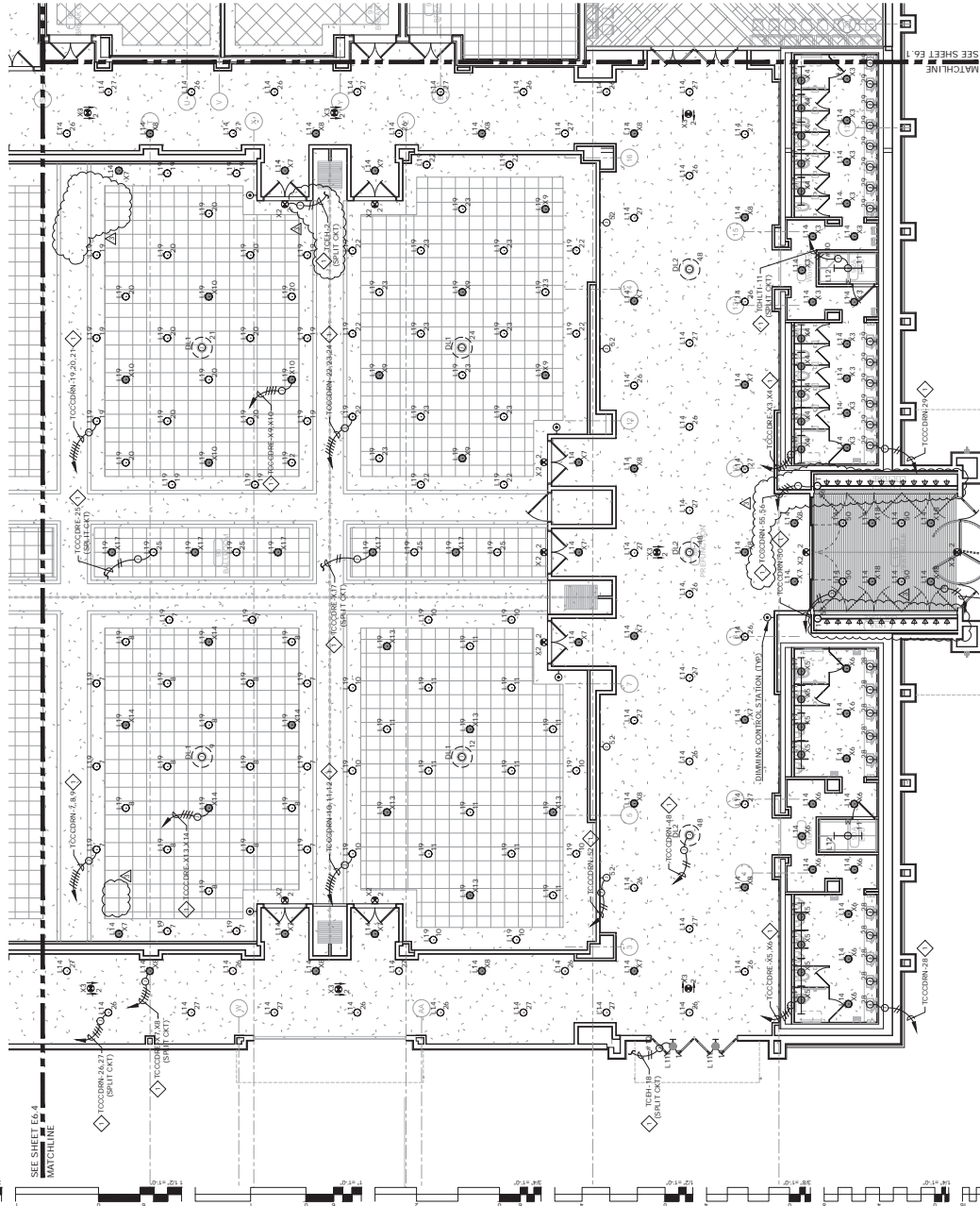
**ENLARGED LIGHTING
PLAN - NORTH**

GENERAL NOTES:

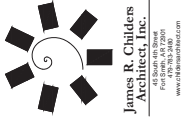
- REFER TO SHEET E6.2 FOR LOCATION OF PANEL TIGHTLY.
- PROVIDE CONSTANT NOT TO ALL LIGHT FIXTURES WITH INTEGRAL EMERGENCY BATTERY.

SHEET NOTES:

ALL WORK SHALL BE PERFORMED IN ACCORDANCE WITH THE CHEROKEE NATION CASINO DESIGN MANUAL, SECTION 10.0, SUBSECTION 10.01, AREA WITH SAME CIRCUIT NUMBERS. CIRCUIT #12 CONDUCTORS, (DOMINANT) THROUGHOUT, UNLESS NOTED OTHERWISE.



ENLARGED LIGHTING PLAN - NORTH
E6.5
1/8" = 1'-0"
NORTH



**James R. Childers
Architect, Inc.**
100 South Park Avenue
Tahlequah, Oklahoma 74464
www.jrchilders.com



TAHLEQUAH, OKLAHOMA
CHEROKEE NATION ENTERTAINMENT
TAHLEQUAH CASINO

BID PACKAGE 05

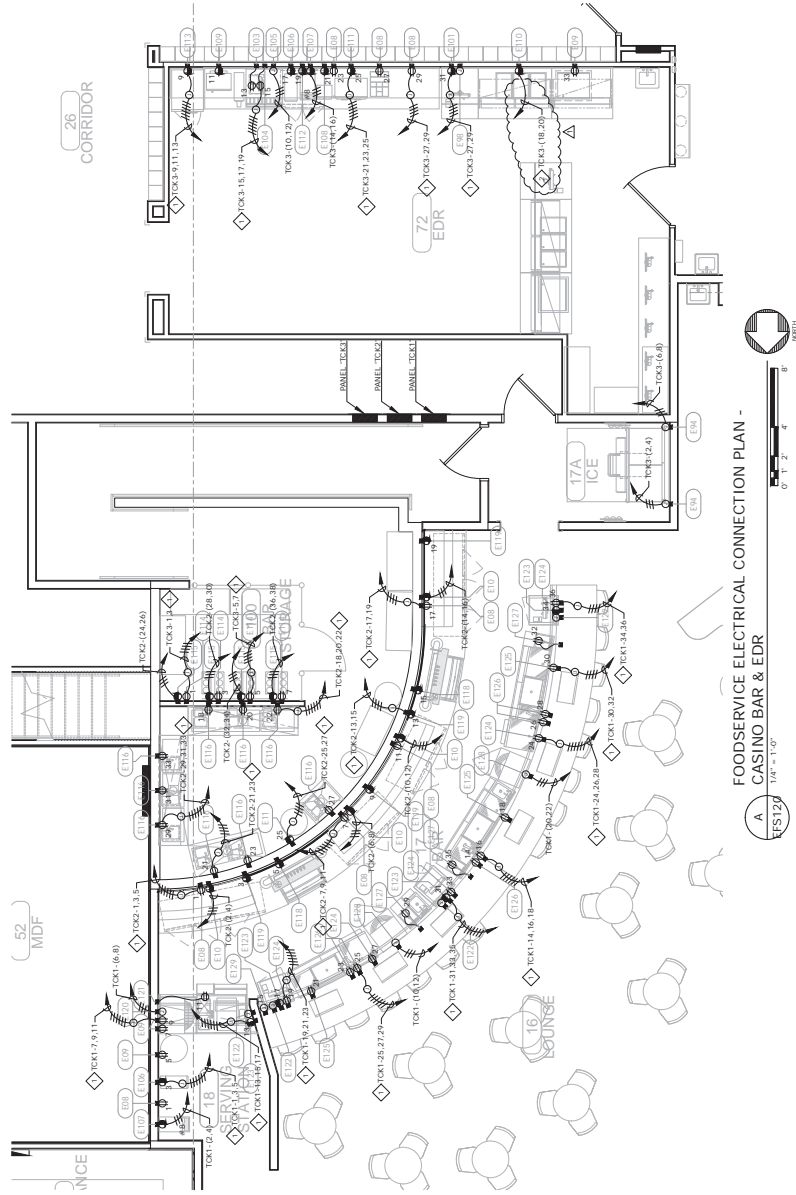
NO.	DESCRIPTION	DATE
1	ISSUED FOR BIDDING	07/20/18
2	REVISED	
3	REVISED	
4	REVISED	

DATE: 08/03/18
DRAWING NO.: 17-466
PROJECT: EFS120
FOODSERVICE ELECTRICAL CONNECTION PLAN

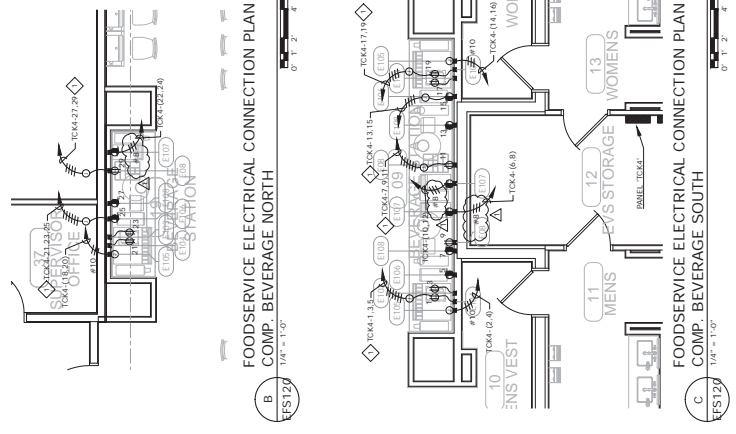
GENERAL NOTES:
1. REFER TO SHEET EG.2 FOR FOOD SERVICE SYSTEM NOTES.

SHEET NOTES:

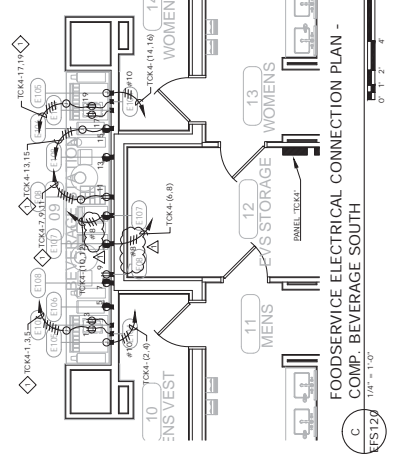
- ◇ EXTEND AND CONNECT CIRCUITING FROM JUNCTION BOX TO OUTLETS IN AREA WITH SAME CIRCUIT NUMBERS, ROUTE #12 CONDUCTORS (MINIMUM) THROUGHOUT, UNLESS NOTED OTHERWISE.
- △ T.C. 306, 1410 GND.



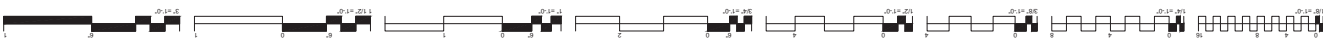
FOODSERVICE ELECTRICAL CONNECTION PLAN - CASINO BAR & EDR
1/4" = 1'-0"
EFS120



FOODSERVICE ELECTRICAL CONNECTION PLAN - COMP. BEVERAGE NORTH
1/4" = 1'-0"
EFS120



FOODSERVICE ELECTRICAL CONNECTION PLAN - COMP. BEVERAGE SOUTH
1/4" = 1'-0"
EFS120





**James R. Childers
Architect, Inc.**
1600 South A-12 Street
Tulsa, Oklahoma 74119
www.jrchilders.com



TAHLEQUAH, OKLAHOMA
**CHEROKEE NATION ENTERTAINMENT
TAHLEQUAH CASINO**

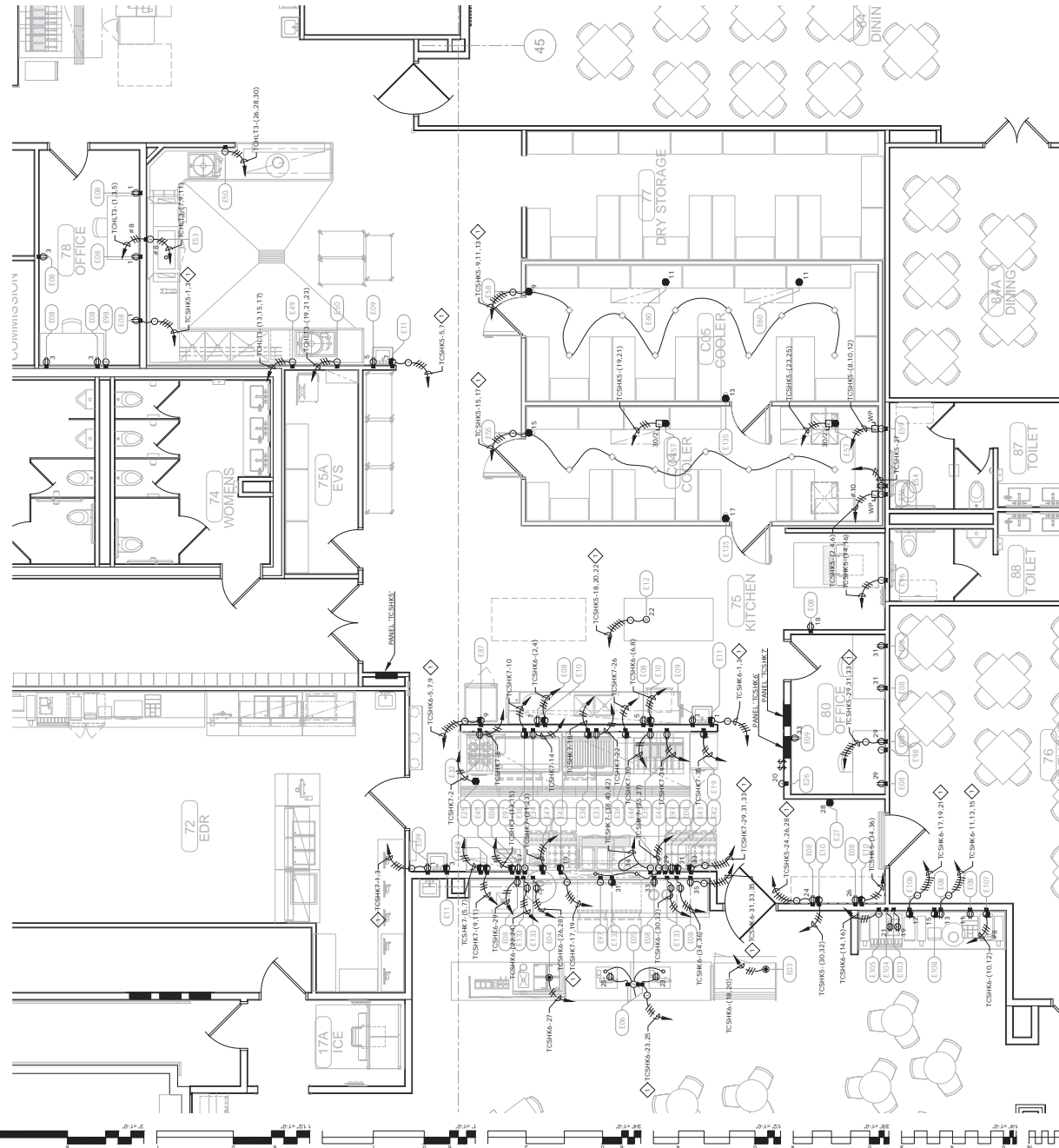
**BID PACKAGE 02
(100% SET)**

NO.	DESCRIPTION	QUANTITY	UNIT	AMOUNT
1
2
3
4
5
6
7
8
9
10
11
12
13
14
15
16
17
18
19
20
21
22
23
24
25
26
27
28
29
30
31
32
33
34
35
36
37
38
39
40
41
42
43
44
45
46
47
48
49
50
51
52
53
54
55
56
57
58
59
60
61
62
63
64
65
66
67
68
69
70
71
72
73
74
75
76
77
78
79
80
81
82
83
84
85
86
87
88
89
90
91
92
93
94
95
96
97
98
99
100

DATE: 03/27/18
DRAWING NO.: 17-06

EF5121
FOODSERVICE
ELECTRICAL
CONNECTION PLAN

- GENERAL NOTES:**
- REFER TO SHEET EG.2 FOR FOOD SERVICE SYSTEM NOTES.
- SHEET NOTES:**
- EXTEND AND CONNECT CONDUITING FROM JUNCTION BOX TO OUTLETS IN AREA WITH SAME CIRCUIT NUMBERS, ROUTE #12 CONDUCTORS (MINIMUM) THROUGHOUT, UNLESS NOTED OTHERWISE.



**FOODSERVICE ELECTRICAL CONNECTION PLAN -
GRAB-N-GO KITCHEN**
A
EF5121
1/4" = 1'-0"





**James R. Childers
Architect, Inc.**
100 South Park Drive
P.O. Box 131270
Tulsa, Oklahoma 74113
www.jrch.com



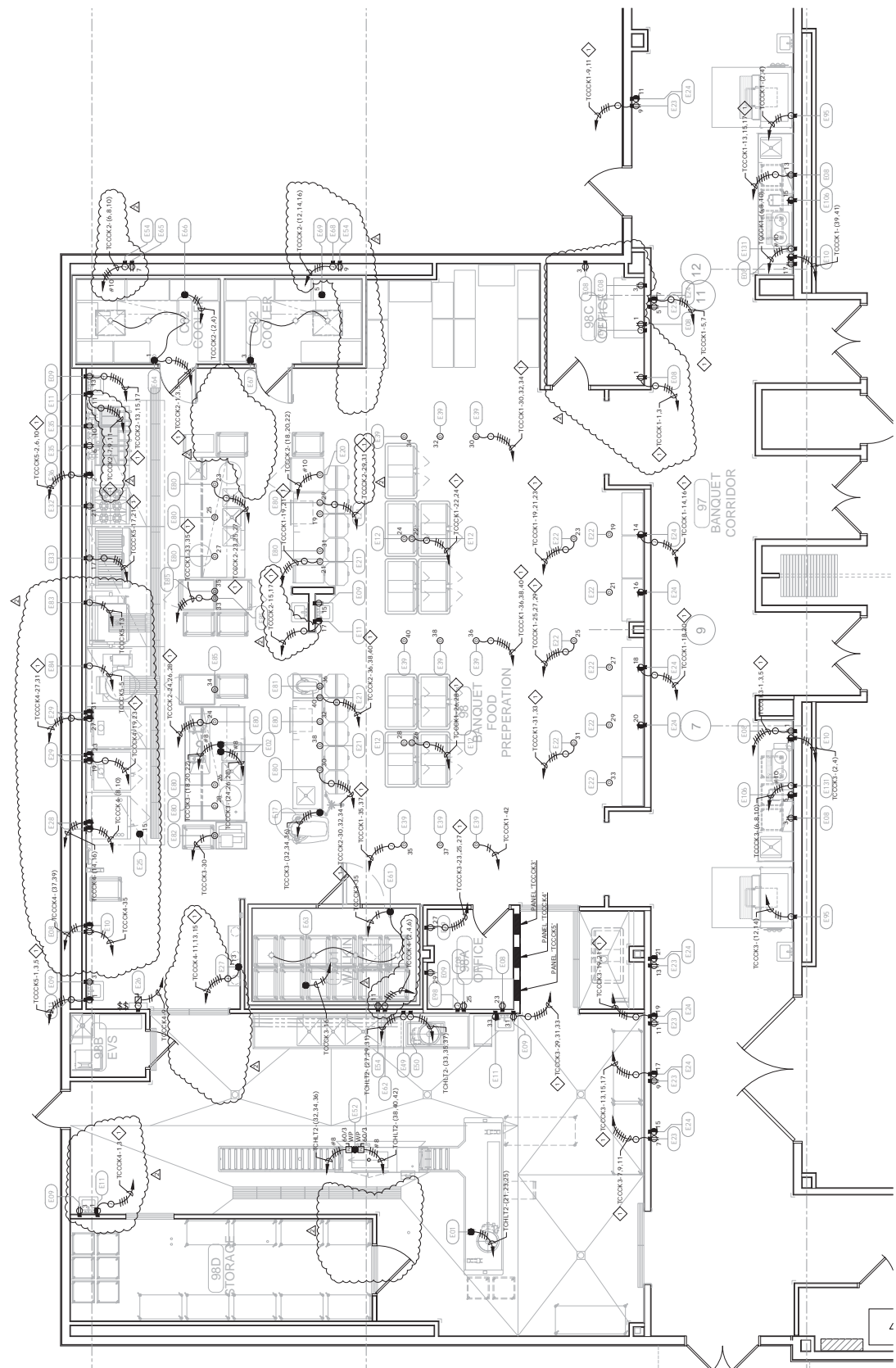
CHEROKEE NATION ENTERTAINMENT
TAHLEQUAH CASINO
TAHLEQUAH, OKLAHOMA

PROJECT NO:	BID PACKAGE 02
DATE:	100% SET
SCALE:	AS SHOWN
DATE:	REVISION
DATE:	REVISION
DATE:	REVISION
DATE:	REVISION
DATE:	REVISION
DATE:	REVISION
DATE:	REVISION
DATE:	REVISION

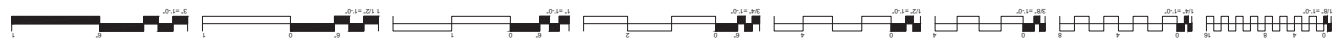
DATE: 03/27/18
DRAWING NO: 17-06

EFS122
FOODSERVICE
ELECTRICAL
CONNECTION PLAN

- GENERAL NOTES:**
- REFER TO SHEET EQ.2 FOR FOOD SERVICE SYSTEM NOTES.
- SHEET NOTES:**
- EXTEND AND CONNECT CIRCUITING FROM JUNCTION BOX TO OUTLETS IN AREA WITH SAME CIRCUIT NUMBERS, ROUTE #12 CONDUCTORS (MINIMUM) THROUGHOUT, UNLESS NOTED OTHERWISE.



FOODSERVICE ELECTRICAL CONNECTION PLAN - BANQUET KITCHEN
1/4" = 1'-0"
EFS122





**James R. Childers
Architect, Inc.**
100 South Park Avenue
Ft. Smith, AR 72301
501-843-2200
www.jrchilders.com



CHEROKEE NATION ENTERTAINMENT
TAHLEQUAH CASINO
TAHLEQUAH, OKLAHOMA

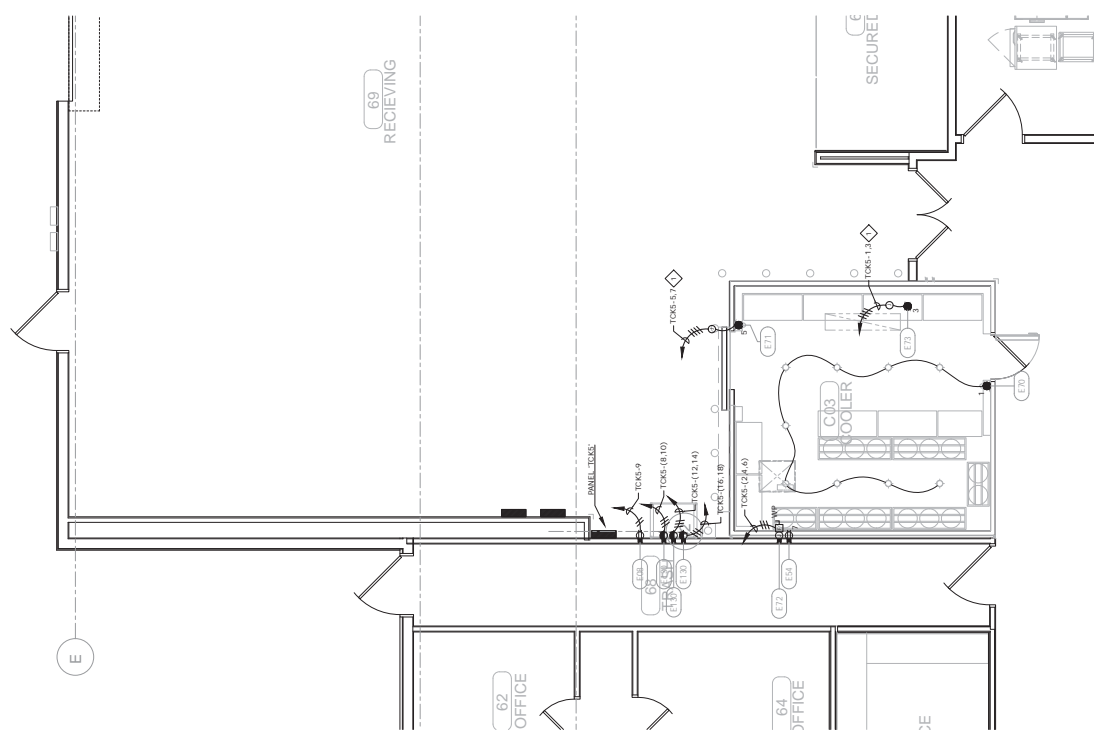
BID PACKAGE 05

NO.	DESCRIPTION	QUANTITY
1		
2		
3		
4		
5		
6		
7		
8		
9		
10		

DATE: 05/03/18
DRAWING NO.: 17-06

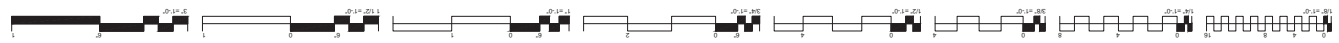
PROJECT NO.: EFS123
PROJECT NAME: FOODSERVICE ELECTRICAL CONNECTION PLAN

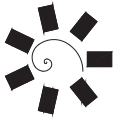
- GENERAL NOTES:**
- REFER TO SHEET EG.2 FOR FOOD SERVICE SYSTEM NOTES.
- SHEET NOTES:**
- EXTEND AND CONNECT CIRCUITING FROM JUNCTION BOX TO OUTLETS IN AREA WITH SAME CIRCUIT NUMBERS, ROUTE #12 CONDUCTORS (MINIMUM) THROUGHOUT, UNLESS NOTED OTHERWISE.



**FOODSERVICE ELECTRICAL CONNECTION PLAN -
WAREHOUSE**
SCALE: 1/4" = 1'-0"
EFS123

REVISIONS
DATE
BY
DESCRIPTION





**James R. Childers
Architect, Inc.**
100 South Park Avenue
P.O. Box 100
Cherokee, NC 28718
www.jrchilders.com



TAHLEQUAH, OKLAHOMA
**CHEROKEE NATION ENTERTAINMENT
TAHLEQUAH CASINO**

BID PACKAGE 02
(100% SET)

NO.	REVISION	DATE
1	ISSUED FOR PERMIT	08/27/18
2	REVISED	
3	REVISED	
4	REVISED	

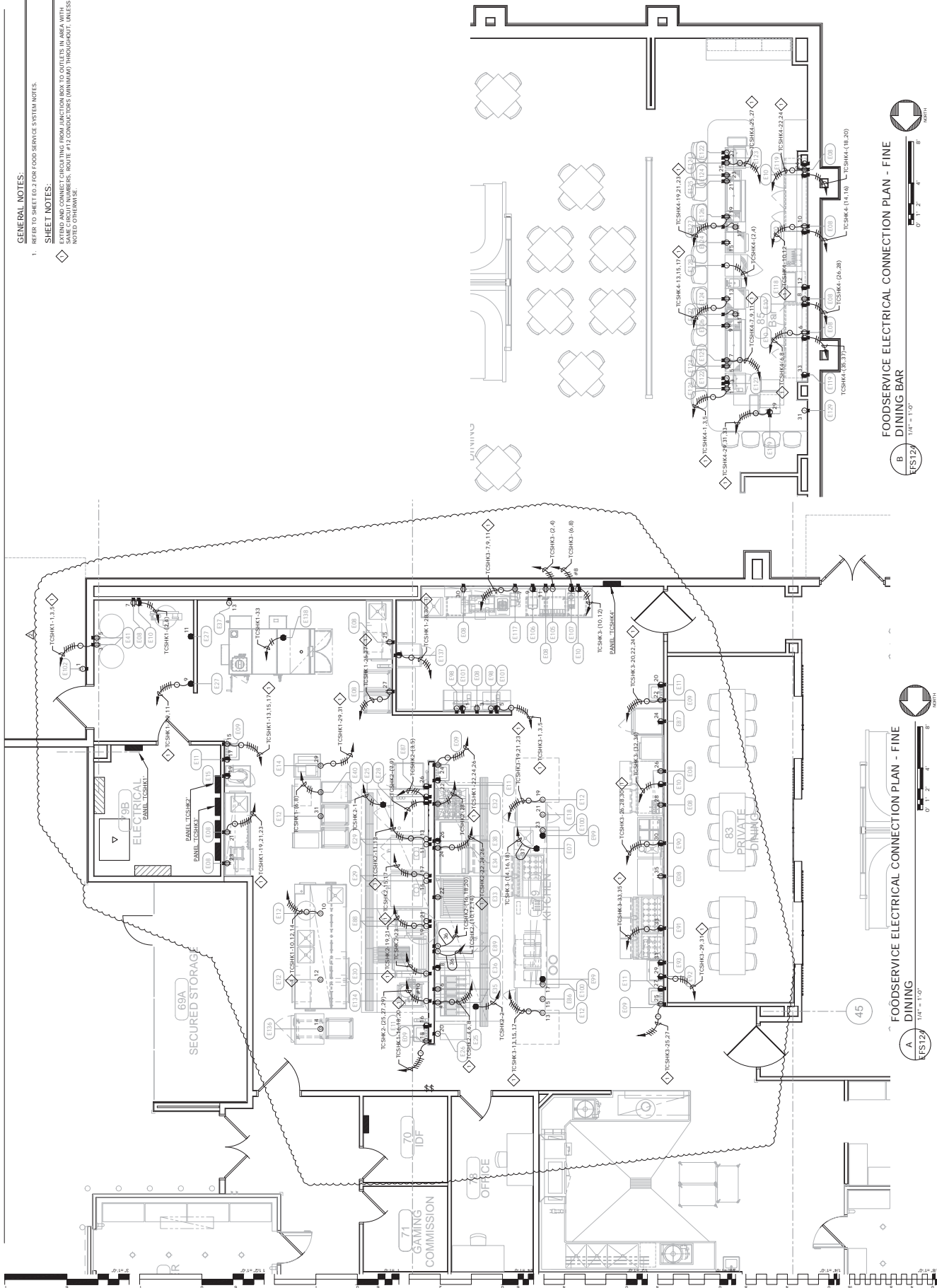
DATE: 08/27/18
DRAWING NO.: 17-06

PROJECT: EFS124
FOODSERVICE ELECTRICAL CONNECTION PLAN

GENERAL NOTES:
1. REFER TO SHEET EQ.2 FOR FOOD SERVICE SYSTEM NOTES.

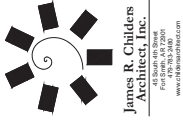
SHEET NOTES:

- EXTEND AND CONNECT CONDUITING FROM JUNCTION BOX TO OUTLETS IN AREA WITH SAME CIRCUIT NUMBERS, ROUTE #12 CONDUCTORS (MINIMUM) THROUGHOUT, UNLESS NOTED OTHERWISE.



FOODSERVICE ELECTRICAL CONNECTION PLAN - FINE
DINING BAR
EFS124 1/8" = 1'-0"

FOODSERVICE ELECTRICAL CONNECTION PLAN - FINE
DINING
EFS124 1/8" = 1'-0"



**James R. Childers
Architect, Inc.**
1600 South College Avenue
Tahlequah, Oklahoma 74464
www.jrchilders.com



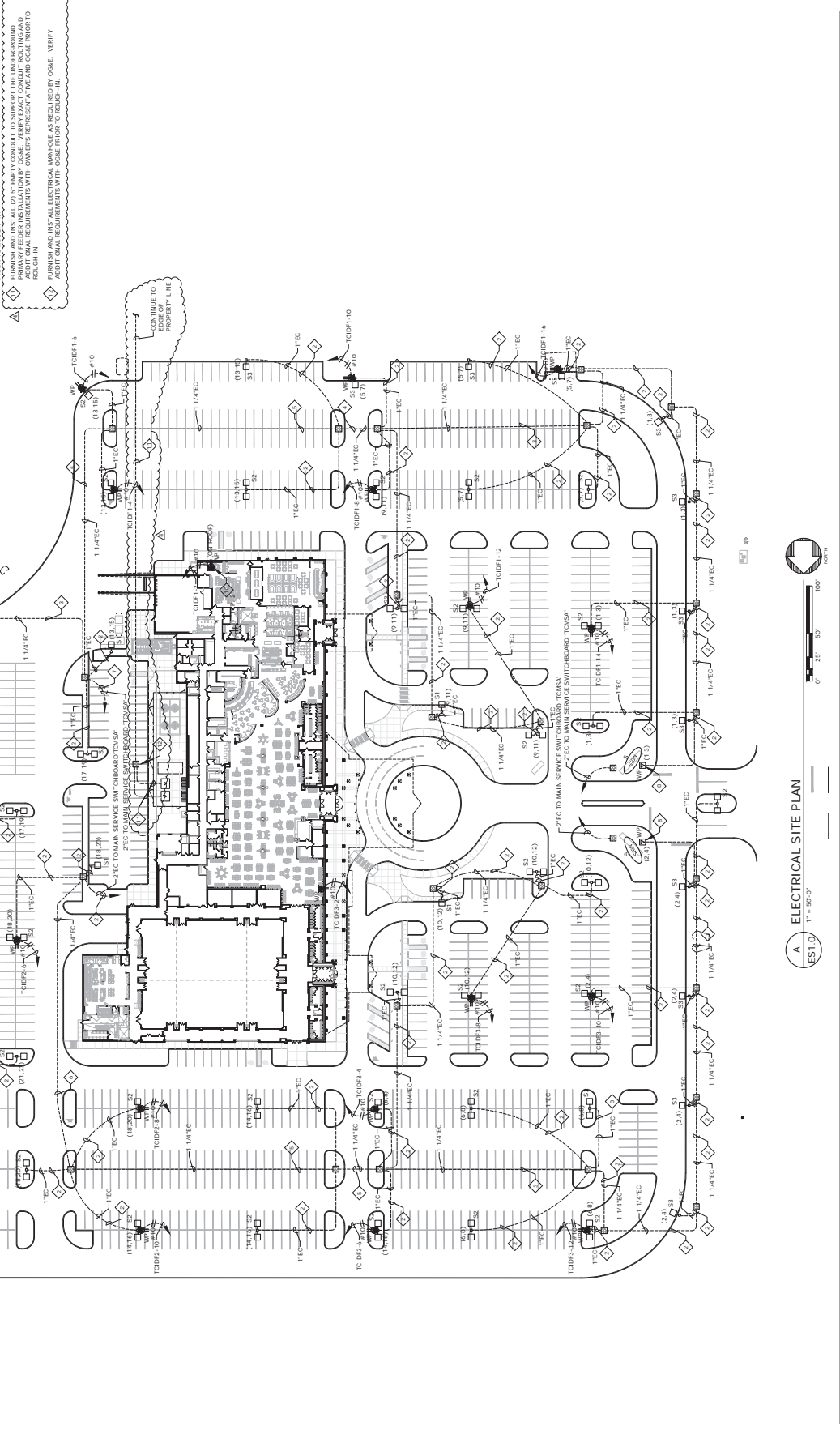
TAHLEQUAH, OKLAHOMA
CHEROKEE NATION ENTERTAINMENT
TAHLEQUAH CASINO

**BID PACKAGE 02
(100% SET)**

DATE	DESCRIPTION	
03/27/18	17-46	
REVISIONS		
NO.	DATE	DESCRIPTION

ES1.0
ELECTRICAL SITE PLAN

- SHEET NOTES:**
- ◇ EXTEND AND CONNECT CIRCUITING FROM JUNCTION BOX TO OUTLETS IN AREA WITH EXISTING CONDUIT. ROUTE #12 CONDUIT TO (MINIMUM) THROUGHOUT, UNLESS NOTED OTHERWISE.
 - ◇ 248. 148 GND IN EXISTING CONDUIT.
 - ◇ 448. 148 GND IN EXISTING CONDUIT.
 - ◇ 648. 148 GND IN EXISTING CONDUIT.
 - ◇ 848. 148 GND IN EXISTING CONDUIT.
 - ◇ 1048. 148 GND IN EXISTING CONDUIT.
 - ◇ 1248. 148 GND IN EXISTING CONDUIT.
 - ◇ 1448. 148 GND IN EXISTING CONDUIT.
 - ◇ FURNISH AND INSTALL WEATHERPROOF GFCI RECEPTACLE FOR OUTDOOR SPEAKER AT WITH LINE AND LOAD IN LINE TUBES IN WEATHERPROOF BOX.
 - ◇ FURNISH AND INSTALL WEATHERPROOF GFCI RECEPTACLE ON THE ROOF NEAR THE MAIN SERVICE SWITCHBOARD TO SUPPORT THE AV CONTRACTOR PRIOR TO ROUGH-IN. INSTALLATION REQUIREMENTS WITH THE AV CONTRACTOR. VERIFY LOCATION AND INSTALLATION REQUIREMENTS WITH THE AV CONTRACTOR PRIOR TO CONSTRUCTION.
 - ◇ FURNISH AND INSTALL (2) 2" EMBURY CONDUIT TO SUPPORT THE UNDERGROUND MAIN SERVICE SWITCHBOARD TO SUPPORT THE AV CONTRACTOR PRIOR TO ROUGH-IN. ADDITIONAL REQUIREMENTS WITH OWNER'S REPRESENTATIVE AND OCEM PRIOR TO ROUGH-IN.
 - ◇ FURNISH AND INSTALL ELECTRICAL MANHOLE AS REQUIRED BY CODE. VERIFY LOCATION AND INSTALLATION REQUIREMENTS WITH THE AV CONTRACTOR PRIOR TO CONSTRUCTION.



A ELECTRICAL SITE PLAN
EST.0 17-50401

