

TAHLEQUAH CASINO
CHEROKEE NATION ENTERTAINMENT
TAHLEQUAH, OKLAHOMA

PROJECT NAME:
APPENDIX #10

| | |
|-----|--------------------|
| NO. | REVISION |
| 1 | ISSUE FOR PERMIT |
| 2 | REVISED PER PERMIT |
| 3 | REVISED PER PERMIT |
| 4 | REVISED PER PERMIT |

DATE: 05/22/18
DRAWING NO: 17-06
PROJECT NAME: E0.31

DIMMER SCHEDULES

DIMMER 'TCCCDRN' SCHEDULE

INCOMING LINE: MAINS BOP RMS - 400 A

LOAD: 1 KVA

BACK: 96 MODULES

| DIMMER NUMBER | WATTAGE | LOAD | NEW LOCATION | NEW DESCRIPTION | EXISTING DESCRIPTION |
|---------------|---------|------|---------------------------|-----------------|----------------------|
| 69 | 2400 | 400 | BANQUET ROOM CENTER AISLE | FIXTURE L14' | TRD |
| 70 | 2400 | 80 | ENTRY VESTIBULE | FIXTURE L14' | TRD |
| 71 | 2400 | 240 | PREFUNCTION | 5 CONC | TRD |
| 72 | 2400 | | | SPACE | |
| 73 | 2400 | | | SPACE | |
| 74 | 2400 | | | SPACE | |
| 75 | 2400 | | | SPACE | |
| 76 | 2400 | | | SPACE | |
| 77 | 2400 | | | SPACE | |
| 78 | 2400 | | | SPACE | |
| 79 | 2400 | | | SPACE | |
| 80 | 2400 | | | SPACE | |
| 81 | 2400 | | | SPACE | |
| 82 | 2400 | | | SPACE | |
| 83 | 2400 | | | SPACE | |
| 84 | 2400 | | | SPACE | |
| 85 | 2400 | | | SPACE | |
| 86 | 2400 | | | SPACE | |
| 87 | 2400 | | | SPACE | |
| 88 | 2400 | | | SPACE | |
| 89 | 2400 | | | SPACE | |
| 90 | 2400 | | | SPACE | |
| 91 | 2400 | | | SPACE | |
| 92 | 2400 | | | SPACE | |
| 93 | 2400 | | | SPACE | |
| 94 | 2400 | | | SPACE | |
| 95 | 2400 | | | SPACE | |
| 96 | 2400 | | | SPACE | |

DIMMER 'TCCCDRN' SCHEDULE

INCOMING LINE: MAINS BOP RMS - 400 A

LOAD: 17 KVA

BACK: 96 MODULES

| DIMMER NUMBER | WATTAGE | LOAD | NEW LOCATION | NEW DESCRIPTION | EXISTING DESCRIPTION |
|---------------|---------|------|----------------------------|-----------------|----------------------|
| 1 | 2400 | 495 | NE BANQUET ROOM | FIXTURE L19' | TRD |
| 2 | 2400 | 605 | NE BANQUET ROOM | FIXTURE L19' | TRD |
| 3 | 2400 | 120 | NE BANQUET ROOM | FIXTURE L19' | TRD |
| 4 | 2400 | 550 | NE CENTER BANQUET ROOM | FIXTURE L19' | TRD |
| 5 | 2400 | 605 | NE CENTER BANQUET ROOM | FIXTURE L19' | TRD |
| 6 | 2400 | 120 | NE CENTER BANQUET ROOM | FIXTURE L19' | TRD |
| 7 | 2400 | 550 | NW CENTER BANQUET ROOM | FIXTURE L19' | TRD |
| 8 | 2400 | 605 | NW CENTER BANQUET ROOM | FIXTURE L19' | TRD |
| 9 | 2400 | 120 | NW CENTER BANQUET ROOM | FIXTURE L19' | TRD |
| 10 | 2400 | 495 | NW BANQUET ROOM | FIXTURE L19' | TRD |
| 11 | 2400 | 605 | NW BANQUET ROOM | FIXTURE L19' | TRD |
| 12 | 2400 | 120 | NW BANQUET ROOM | FIXTURE L19' | TRD |
| 13 | 2400 | 495 | SE BANQUET ROOM | FIXTURE L19' | TRD |
| 14 | 2400 | 605 | SE BANQUET ROOM | FIXTURE L19' | TRD |
| 15 | 2400 | 120 | SE BANQUET ROOM | FIXTURE L19' | TRD |
| 16 | 2400 | 550 | SE CENTER BANQUET ROOM | FIXTURE L19' | TRD |
| 17 | 2400 | 605 | SE CENTER BANQUET ROOM | FIXTURE L19' | TRD |
| 18 | 2400 | 120 | SE CENTER BANQUET ROOM | FIXTURE L19' | TRD |
| 19 | 2400 | 550 | SW CENTER BANQUET ROOM | FIXTURE L19' | TRD |
| 20 | 2400 | 605 | SW CENTER BANQUET ROOM | FIXTURE L19' | TRD |
| 21 | 2400 | 120 | SW CENTER BANQUET ROOM | FIXTURE L19' | TRD |
| 22 | 2400 | 495 | SW BANQUET ROOM | FIXTURE L19' | TRD |
| 23 | 2400 | 605 | SW BANQUET ROOM | FIXTURE L19' | TRD |
| 24 | 2400 | 120 | SW BANQUET ROOM | FIXTURE L19' | TRD |
| 25 | 2400 | 440 | BANQUET ROOMS CENTER AISLE | FIXTURE L14' | TRD |
| 26 | 2400 | 620 | PRE FUNCTION | FIXTURE L14' | TRD |
| 27 | 2400 | 620 | PRE FUNCTION | FIXTURE L14' | TRD |
| 28 | 2400 | 500 | PRE FUNCTION MEN'S R.R. | BACKLIT MIRRORS | TRD |
| 29 | 2400 | 500 | PRE FUNCTION MEN'S R.R. | BACKLIT MIRRORS | TRD |
| 30 | 2400 | 315 | BREAKOUT #4 & #5 | FIXTURE L18' | NON DIM |
| 31 | 2400 | 180 | BREAKOUT #3 | FIXTURE L18' | NON DIM |
| 32 | 2400 | 180 | BREAKOUT #3 | FIXTURE L18' | NON DIM |
| 33 | 2400 | 315 | BREAKOUT #4 & #5 | FIXTURE L18' | NON DIM |
| 34 | 2400 | 200 | PRE FUNCTION WOMEN'S RR | FIXTURE L17' | TRD |
| 35 | 2400 | 200 | PRE FUNCTION WOMEN'S RR | FIXTURE L17' | TRD |
| 36 | 2400 | 200 | PRE FUNCTION MEN'S RR | FIXTURE L17' | TRD |
| 37 | 2400 | 200 | PRE FUNCTION MEN'S RR | FIXTURE L14' | TRD |
| 38 | 2400 | 490 | PRE FUNCTION | FIXTURE L14' | TRD |
| 39 | 2400 | 440 | PRE FUNCTION | FIXTURE L14' | TRD |
| 40 | 2400 | 110 | SW BANQUET ROOM | FIXTURE L19' | TRD |
| 41 | 2400 | 90 | SW CENTER BANQUET ROOM | FIXTURE L19' | TRD |
| 42 | 2400 | 90 | SE CENTER BANQUET ROOM | FIXTURE L19' | TRD |
| 43 | 2400 | 110 | SE BANQUET ROOM | FIXTURE L19' | TRD |
| 44 | 2400 | 110 | NW BANQUET ROOM | FIXTURE L19' | TRD |
| 45 | 2400 | 90 | NW CENTER BANQUET ROOM | FIXTURE L19' | TRD |
| 46 | 2400 | 110 | NE BANQUET ROOM | FIXTURE L19' | TRD |
| 47 | 2400 | 110 | NE CENTER BANQUET ROOM | FIXTURE L19' | TRD |
| 48 | 2400 | 360 | PRE FUNCTION | FIXTURE L14' | TRD |

EMERGENCY LIGHTING TRANSFER CABINET 'TCCCDRE' SCHEDULE

INCOMING LINE: MAINS BOP RMS - 400 A

LOAD: 3 KVA

PANEL: 48 CIRCUITS

| DIMMER NUMBER | WATTAGE | LOAD | NEW LOCATION | NEW DESCRIPTION | EXISTING DESCRIPTION |
|---------------|---------|------|---------------------------|-----------------|----------------------|
| 32 | X1 | 20A | BREAKOUT ROOM | FIXTURE L18' | |
| 33 | X2 | 20A | BREAKOUT ROOM | FIXTURE L18' | |
| 34 | X3 | 20A | RESTROOM | FIXTURE L14' | |
| 35 | X4 | 20A | RESTROOM | FIXTURE L14' | |
| 36 | X5 | 20A | RESTROOM | FIXTURE L14' | |
| 37 | X6 | 20A | RESTROOM | FIXTURE L14' | |
| 38 | X7 | 20A | PRE FUNCTION | FIXTURE L14' | |
| 39 | X8 | 20A | PRE FUNCTION | FIXTURE L14' | |
| 40 | X9 | 20A | SW BANQUET | FIXTURE L19' | |
| 41 | X10 | 20A | SW BANQUET | FIXTURE L19' | |
| 42 | X11 | 20A | SE BANQUET | FIXTURE L19' | |
| 43 | X12 | 20A | SE BANQUET | FIXTURE L19' | |
| 44 | X13 | 20A | NW BANQUET | FIXTURE L19' | |
| 45 | X14 | 20A | NW BANQUET | FIXTURE L19' | |
| 46 | X15 | 20A | NE BANQUET | FIXTURE L19' | |
| 47 | X16 | 20A | NE BANQUET | FIXTURE L19' | |
| 48 | X17 | 20A | BANQUET ROOM CENTER AISLE | FIXTURE L14' | |
| 49 | X18 | 20A | ENTRY VESTIBULE | FIXTURE L14' | |
| 50 | X19 | 20A | SPACE | | |
| 51 | X20 | 20A | SPACE | | |
| 52 | X21 | 20A | SPACE | | |
| 53 | X22 | 20A | SPACE | | |
| 54 | X23 | 20A | SPACE | | |
| 55 | X24 | 20A | SPACE | | |
| 56 | X25 | 20A | SPACE | | |
| 57 | X26 | 20A | SPACE | | |
| 58 | X27 | 20A | SPACE | | |
| 59 | X28 | 20A | SPACE | | |
| 60 | X29 | 20A | SPACE | | |
| 61 | X30 | 20A | SPACE | | |
| 62 | X31 | 20A | SPACE | | |
| 63 | X32 | 20A | SPACE | | |
| 64 | X33 | 20A | SPACE | | |
| 65 | X34 | 20A | SPACE | | |
| 66 | X35 | 20A | SPACE | | |
| 67 | X36 | 20A | SPACE | | |
| 68 | X37 | 20A | SPACE | | |
| 69 | X38 | 20A | SPACE | | |
| 70 | X39 | 20A | SPACE | | |
| 71 | X40 | 20A | SPACE | | |
| 72 | X41 | 20A | SPACE | | |
| 73 | X42 | 20A | SPACE | | |
| 74 | X43 | 20A | SPACE | | |
| 75 | X44 | 20A | SPACE | | |
| 76 | X45 | 20A | SPACE | | |
| 77 | X46 | 20A | SPACE | | |
| 78 | X47 | 20A | SPACE | | |
| 79 | X48 | 20A | SPACE | | |
| 80 | X49 | 20A | SPACE | | |
| 81 | X50 | 20A | SPACE | | |
| 82 | X51 | 20A | SPACE | | |
| 83 | X52 | 20A | SPACE | | |
| 84 | X53 | 20A | SPACE | | |
| 85 | X54 | 20A | SPACE | | |
| 86 | X55 | 20A | SPACE | | |
| 87 | X56 | 20A | SPACE | | |
| 88 | X57 | 20A | SPACE | | |
| 89 | X58 | 20A | SPACE | | |
| 90 | X59 | 20A | SPACE | | |
| 91 | X60 | 20A | SPACE | | |
| 92 | X61 | 20A | SPACE | | |
| 93 | X62 | 20A | SPACE | | |
| 94 | X63 | 20A | SPACE | | |
| 95 | X64 | 20A | SPACE | | |
| 96 | X65 | 20A | SPACE | | |
| 97 | X66 | 20A | SPACE | | |
| 98 | X67 | 20A | SPACE | | |
| 99 | X68 | 20A | SPACE | | |
| 100 | X69 | 20A | SPACE | | |





**James R. Childers
Architect, Inc.**
Professional Seal
1702 Park Ave., Suite 200
Tahlequah, Oklahoma 74464
www.jrchilders.com



TAHLEQUAH, OKLAHOMA
**CHEROKEE NATION ENTERTAINMENT
TAHLEQUAH CASINO**

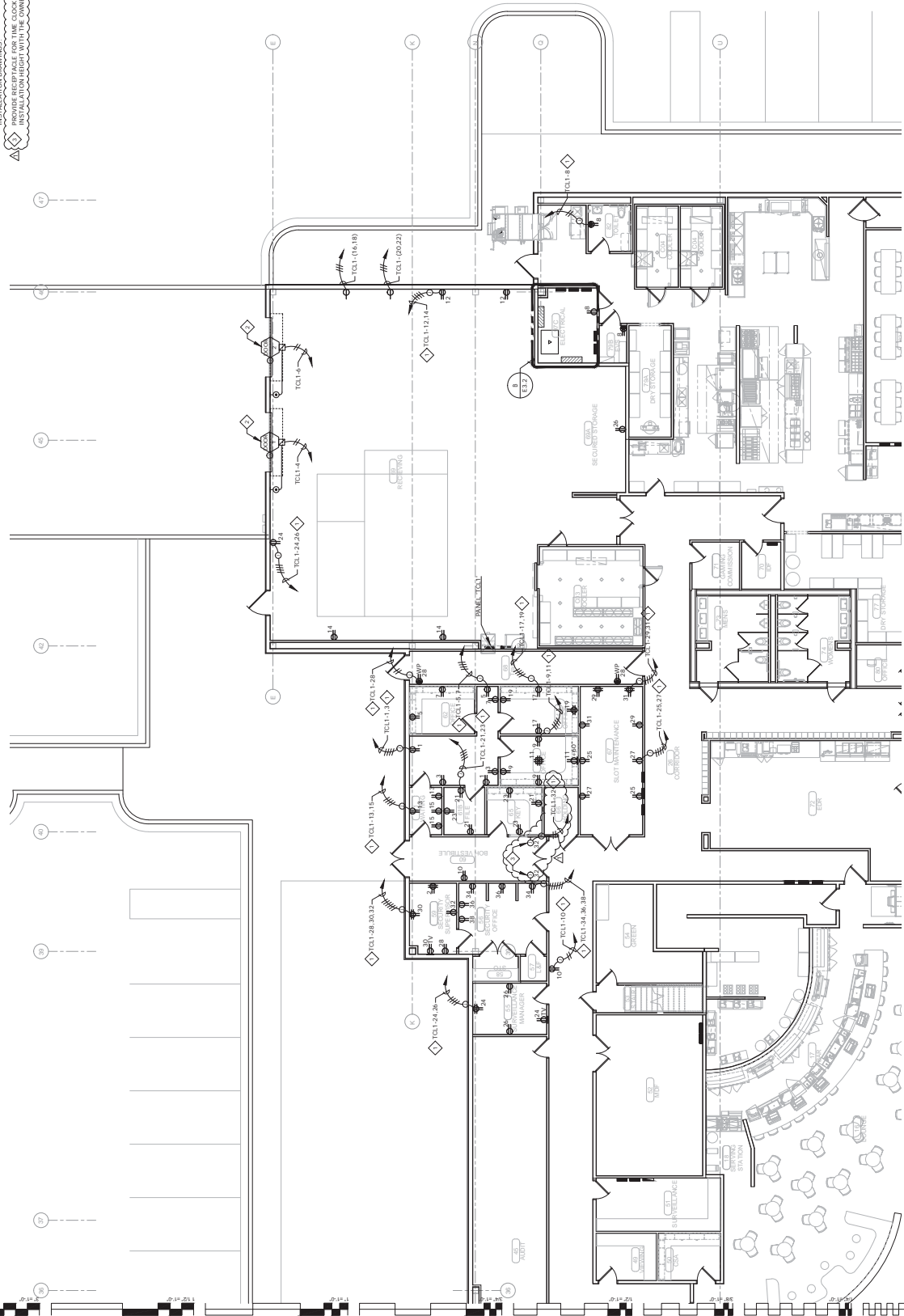
BID PACKAGE 05

| | |
|-----|-----------------|
| NO. | DESCRIPTION |
| 1 | MECHANICAL |
| 2 | ELECTRICAL |
| 3 | PLUMBING |
| 4 | HAZARDOUS WASTE |
| 5 | CONCRETE |
| 6 | PAINT |
| 7 | GLASS |
| 8 | IRONWORK |
| 9 | STEEL ERECTION |
| 10 | WOODWORK |
| 11 | ROOFING |
| 12 | MECHANICAL |
| 13 | ELECTRICAL |
| 14 | PLUMBING |
| 15 | HAZARDOUS WASTE |
| 16 | CONCRETE |
| 17 | PAINT |
| 18 | GLASS |
| 19 | IRONWORK |
| 20 | STEEL ERECTION |
| 21 | WOODWORK |
| 22 | ROOFING |
| 23 | MECHANICAL |
| 24 | ELECTRICAL |
| 25 | PLUMBING |
| 26 | HAZARDOUS WASTE |
| 27 | CONCRETE |
| 28 | PAINT |
| 29 | GLASS |
| 30 | IRONWORK |
| 31 | STEEL ERECTION |
| 32 | WOODWORK |
| 33 | ROOFING |
| 34 | MECHANICAL |
| 35 | ELECTRICAL |
| 36 | PLUMBING |
| 37 | HAZARDOUS WASTE |
| 38 | CONCRETE |
| 39 | PAINT |
| 40 | GLASS |
| 41 | IRONWORK |
| 42 | STEEL ERECTION |
| 43 | WOODWORK |
| 44 | ROOFING |
| 45 | MECHANICAL |
| 46 | ELECTRICAL |
| 47 | PLUMBING |
| 48 | HAZARDOUS WASTE |
| 49 | CONCRETE |
| 50 | PAINT |
| 51 | GLASS |
| 52 | IRONWORK |
| 53 | STEEL ERECTION |
| 54 | WOODWORK |
| 55 | ROOFING |
| 56 | MECHANICAL |
| 57 | ELECTRICAL |
| 58 | PLUMBING |
| 59 | HAZARDOUS WASTE |
| 60 | CONCRETE |
| 61 | PAINT |
| 62 | GLASS |
| 63 | IRONWORK |
| 64 | STEEL ERECTION |
| 65 | WOODWORK |
| 66 | ROOFING |
| 67 | MECHANICAL |
| 68 | ELECTRICAL |
| 69 | PLUMBING |
| 70 | HAZARDOUS WASTE |
| 71 | CONCRETE |
| 72 | PAINT |
| 73 | GLASS |
| 74 | IRONWORK |
| 75 | STEEL ERECTION |
| 76 | WOODWORK |
| 77 | ROOFING |
| 78 | MECHANICAL |
| 79 | ELECTRICAL |
| 80 | PLUMBING |
| 81 | HAZARDOUS WASTE |
| 82 | CONCRETE |
| 83 | PAINT |
| 84 | GLASS |
| 85 | IRONWORK |
| 86 | STEEL ERECTION |
| 87 | WOODWORK |
| 88 | ROOFING |
| 89 | MECHANICAL |
| 90 | ELECTRICAL |
| 91 | PLUMBING |
| 92 | HAZARDOUS WASTE |
| 93 | CONCRETE |
| 94 | PAINT |
| 95 | GLASS |
| 96 | IRONWORK |
| 97 | STEEL ERECTION |
| 98 | WOODWORK |
| 99 | ROOFING |
| 100 | MECHANICAL |

DATE: 03/03/18
DRAWING: 17-06
PROJECT: TAHLEQUAH CASINO

E1.3
ENLARGED POWER PLAN - BOH

- GENERAL NOTES:**
1. VERIFY EXACT LOCATION OF ALL OUTLETS WITH ARCHITECT PRIOR TO ROUGH-IN.
- SHEET NOTES:**
- ◇ EXTRA AND CONNECT CHANGING FROM JUNCTION BOX TO OUTLETS IN AREA WITH SAME CIRCUIT NUMBERS, ROUTE #12 CONDUCTORS (MINIMUM) THROUGHOUT, UNLESS NOTED OTHERWISE.
 - ◇ CONDUIT TO BE INSTALLED ABOVE FLOOR AND UP/DOWN CONTROLS PER MANUFACTURER'S INSTALLATION DRAWINGS.
 - ◇ PROVIDE RISE/FALL FOR TIME CLOCK COORDINATE OCCUPANCE LOCATION AND INSTALLATION HEIGHT WITH THE OWNER PRIOR TO ROUGH-IN.



E1.3
1/4" = 1'-0"

ENLARGED POWER PLAN - BOH

0 2 4 6 8 10
FOOT

NORTH



**James R. Childers
Architect, Inc.**
100 S. State, A-12, 200
Tulsa, Oklahoma 74106
www.jrchilders.com



TAHLEQUAH, OKLAHOMA
**CHEROKEE NATION ENTERTAINMENT
TAHLEQUAH CASINO**

BID PACKAGE 05

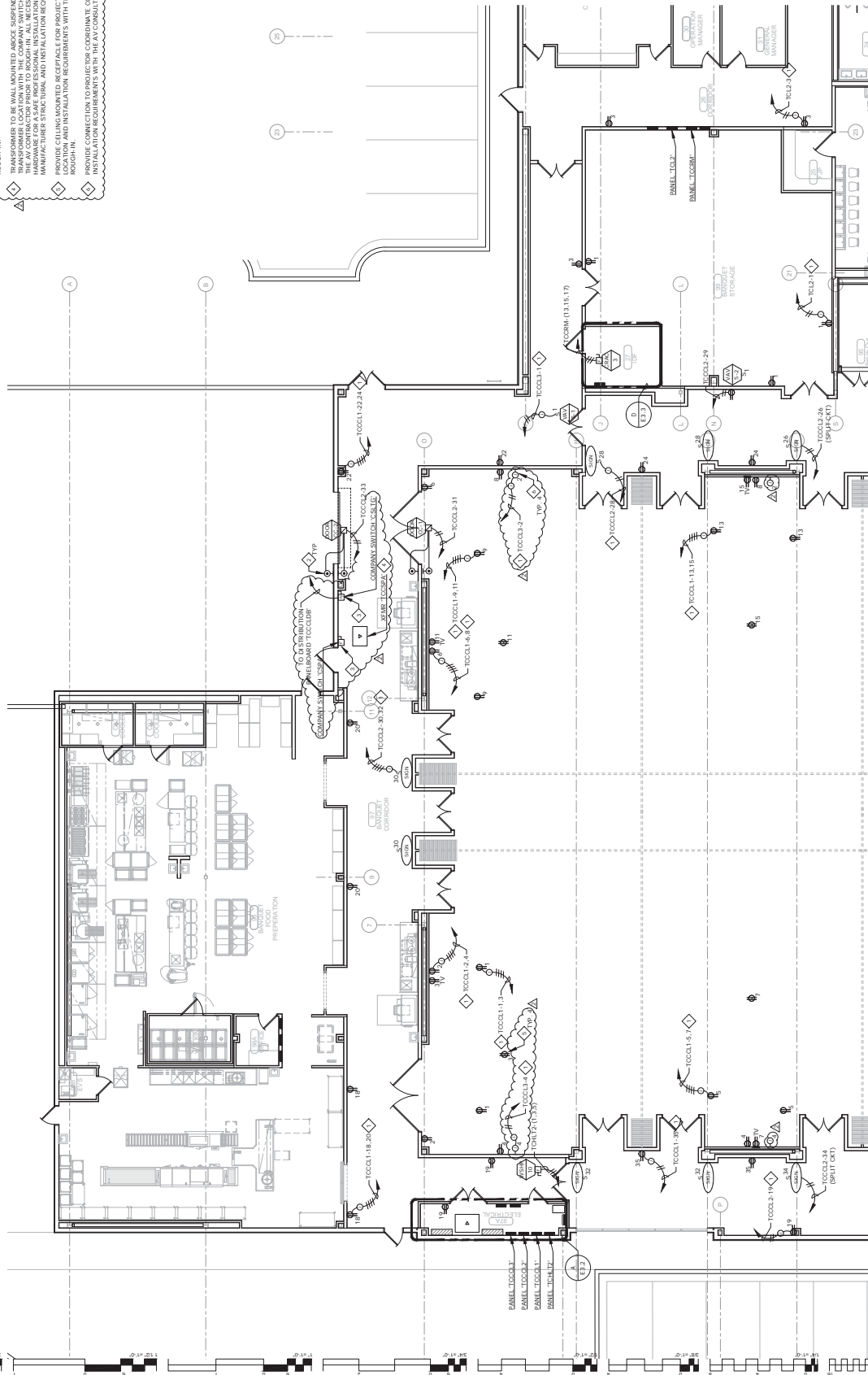
| | | |
|-----|--------------------|------------|
| NO. | DESCRIPTION | DATE |
| 1 | ISSUED FOR BIDDING | 05/11/2011 |
| 2 | REVISED | |
| 3 | REVISED | |
| 4 | REVISED | |

DATE: 05/03/18
PROJECT: 17-06

E1.4

ENLARGED POWER PLAN - BANQUET BOH

- GENERAL NOTES:**
1. VERIFY EXACT LOCATION OF ALL OUTLETS WITH ARCHITECT PRIOR TO ROUGH-IN.
- SHEET NOTES:**
- ◇ EXTRA AND CONNECT CIRCUITING FROM JUNCTION BOX TO OUTLETS IN AREA WITH SAME CIRCUIT NUMBERS, ROUTE #12 CONDUCTORS (MINIMUM) THROUGHOUT, UNLESS NOTED OTHERWISE.
 - ◇ PROVIDE ALL NECESSARY CONDUIT CONNECTIONS TO EACH RECEPTOR AND CONNECT PER INSTALLED EQUIPMENT SHOP DRAWINGS. PROVIDE ALL NECESSARY POWER AND CONTROL CONDUIT AND WIRING FOR A COMPLETE AND OPERABLE SYSTEM.
 - ◇ PROVIDE CIRCUIT AND SAFETY SWITCH FOR COMPANY SWITCH. COORDINATE SWITCH AND INSTALLATION REQUIREMENTS WITH THE ARCHITECT PRIOR TO ROUGH-IN.
 - ◇ TRANSFORMER TO BE WALL MOUNTED ABOVE SUSPENDED CEILING. COORDINATE TRANSFORMER LOCATION WITH THE COMPANY SWITCH. COORDINATE LOCATION AND WITH HARDWARE FOR A SAFE PROFESSIONAL INSTALLATION. CONFORM WITH TRANSFORMER MANUFACTURER'S SPECIFIC AND INSTALLATION REQUIREMENTS.
 - ◇ PROVIDE ALL NECESSARY CONDUIT CONNECTIONS TO EACH RECEPTOR AND CONNECT PER INSTALLED EQUIPMENT SHOP DRAWINGS. PROVIDE ALL NECESSARY POWER AND CONTROL CONDUIT AND WIRING FOR A COMPLETE AND OPERABLE SYSTEM.
 - ◇ PROVIDE CIRCUIT AND SAFETY SWITCH FOR COMPANY SWITCH. COORDINATE SWITCH AND INSTALLATION REQUIREMENTS WITH THE ARCHITECT PRIOR TO ROUGH-IN.
 - ◇ TRANSFORMER TO BE WALL MOUNTED ABOVE SUSPENDED CEILING. COORDINATE TRANSFORMER LOCATION WITH THE COMPANY SWITCH. COORDINATE LOCATION AND WITH HARDWARE FOR A SAFE PROFESSIONAL INSTALLATION. CONFORM WITH TRANSFORMER MANUFACTURER'S SPECIFIC AND INSTALLATION REQUIREMENTS.
 - ◇ PROVIDE ALL NECESSARY CONDUIT CONNECTIONS TO EACH RECEPTOR AND CONNECT PER INSTALLED EQUIPMENT SHOP DRAWINGS. PROVIDE ALL NECESSARY POWER AND CONTROL CONDUIT AND WIRING FOR A COMPLETE AND OPERABLE SYSTEM.
 - ◇ PROVIDE CIRCUIT AND SAFETY SWITCH FOR COMPANY SWITCH. COORDINATE SWITCH AND INSTALLATION REQUIREMENTS WITH THE ARCHITECT PRIOR TO ROUGH-IN.



E1.4
1/8" = 1'-0"
ENLARGED POWER PLAN - BANQUET BOH



James R. Childers
Architect, Inc.
100 South Main Street
Fayetteville, AR 72701
www.jrchilders.com



CHEROKEE NATION ENTERTAINMENT
TAHLEQUAH CASINO
TAHLEQUAH, OKLAHOMA

BID PACKAGE 05

| | |
|-----|---------------------|
| NO. | REVISION |
| 1 | ISSUED FOR BIDDING |
| 2 | REVISED FOR PERMITS |
| 3 | REVISED FOR PERMITS |
| 4 | REVISED FOR PERMITS |

DATE: 05/03/18
DRAWING NO.: 17-06
PROJECT NO.:

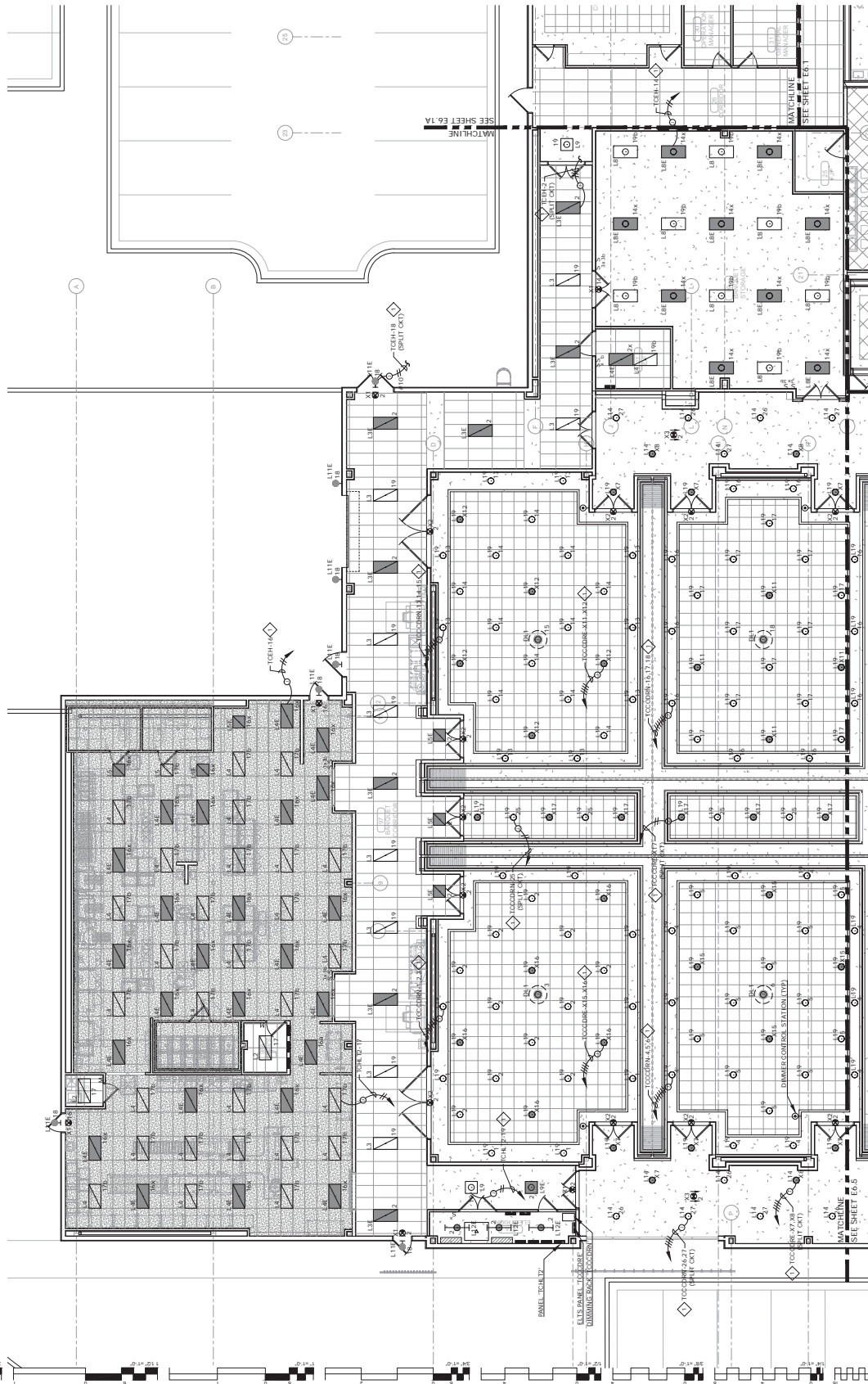
E6.4
ENLARGED LIGHTING PLAN - BANQUET BOH

GENERAL NOTES:

1. REFER TO SHEET E6.1A FOR LOCATION OF PANEL 'TCEH1'.
2. REFER TO SHEET E6.2 FOR LOCATION OF PANEL 'TCEH1T'.
3. PROVIDE CONSTANT HOT TO ALL LIGHT FIXTURES WITH INTEGRAL EMERGENCY BATTERY.

SHEET NOTES:

EXTING AND CONNECT CIRCUITING FROM JUNCTION BOX TO OUTLETS IN AREA WITH SAME CIRCUIT NUMBER AND ROUTE #12 CONDUCTORS (MINIMUM) THROUGHOUT. MARKED WITH DIMENSIONS.



A
E6.4 1/8" = 1'-0"
ENLARGED LIGHTING PLAN - BANQUET BOH

REVISED
UNRESERVED



**James R. Childers
Architect, Inc.**
100 South Park Avenue
Fayetteville, AR 72701
www.jrchilders.com



TAHLEQUAH, OKLAHOMA
**CHEROKEE NATION ENTERTAINMENT
TAHLEQUAH CASINO**

PROJECT NO: **BD PACKAGE 02
(100% SET)**

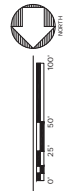
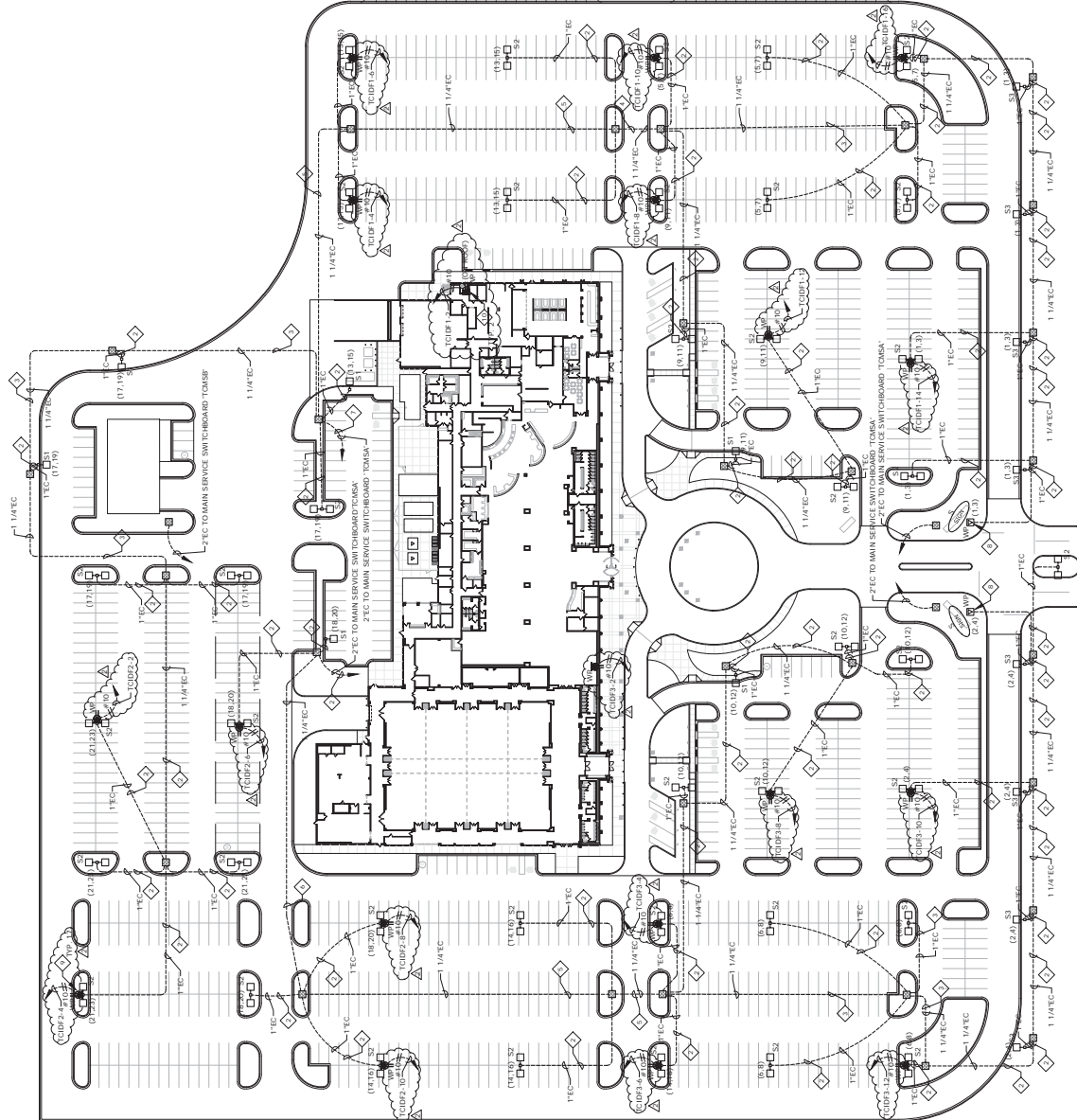
| | |
|-----|------------------------|
| NO. | REVISION |
| 1 | ISSUE FOR PERMITTING |
| 2 | ISSUE FOR BIDDING |
| 3 | ISSUE FOR CONSTRUCTION |

DATE: 03/27/18
DRAWN BY: 17-06
PROJECT NO: ES1.0

ES1.0
ELECTRICAL SITE PLAN

SHEET NOTES:

- ◇ EXTEND AND CONNECT CIRCUITING FROM JUNCTION BOX TO OUTLETS IN AREA WITH OTHER DEVICES. ROUTE #12 CONDUCTORS (MINIMUM) THROUGHOUT, UNLESS NOTED OTHERWISE.
- ◇ 24# 1/4" GND IN EXISTING CONDUIT.
- ◇ 4# 1/4" GND IN EXISTING CONDUIT.
- ◇ 6# 1/4" GND IN EXISTING CONDUIT.
- ◇ 8# 1/4" GND IN EXISTING CONDUIT.
- ◇ 10# 1/4" GND IN EXISTING CONDUIT.
- ◇ 12# 1/4" GND IN EXISTING CONDUIT.
- ◇ 14# 1/4" GND IN EXISTING CONDUIT.
- ◇ 16# 1/4" GND IN EXISTING CONDUIT.
- ◇ FURNISH AND INSTALL WEATHERPROOF GFCI RECEPTACLE FOR OUTDOOR SPEAKER AT VULCAN AND LOU AND ALL MUSIC IN VULCAN AND LOU BOX.
- ◇ FURNISH AND INSTALL WEATHERPROOF GFCI RECEPTACLE ON THE ROOF NEAR THE INSTALLATION REQUIREMENTS WITH THE AV CONTRACTOR PRIOR TO BEGIN IN. INSTALLATION REQUIREMENTS WITH THE AV CONTRACTOR PRIOR TO BEGIN IN. PRIOR TO BEGIN IN.



A ELECTRICAL SITE PLAN
EST.0 1"=50'-0"





HESMAN Group, LLC

FOODSERVICE FACILITY Planners, Designers & Consultants

June 1, 2018

Gary Moore
James R. Childers Architect
45 South 4th Street
Fort Smith, Arkansas 72901

PROJECT: Cherokee Casino
Tahlequah, Oklahoma

Dear Gary,

The following must be included in Addendum 11 for the referenced project.

SPECIFICATIONS

ITEM -1

PAGE 11 4000 - 12

ARTICLE 2.5 FABRICATED EQUIPMENT AND FIXTURES

ADD the following to paragraph A.:

"Stainless Innovations
3501 Tulsa Street
Fort Smith, Arkansas 72903"

ITEM -2

PAGE 11 4000 - 21

ITEM NO. 01CB STORAGE SHELVING

ADD the following to paragraph D.:

"03 Coordinate length of posts with ceiling height and location of ductwork in storage room. Verify length of posts with Owner."

ITEM -3

PAGE 11 4000 - 35

ITEM NO. 16GG 10 QUART KETTLE W/ STAND & DRAINER CART

CHANGE to read as follows:

"ITEM NO. 16GG 20 QUART KETTLE W/ STAND & DRAIN CART"

- A One (1) - Groen, model TDB-20C.
- B To Include:
- 01 Stainless steel construction.
 - 02 Model 174131 stainless steel stand.
 - 03 Model 174311 drain cart with model 124781 plumbing kit.
 - 04 Flanged foot kit.

- C Ancillary Equipment:
01 Component Hardware model KL51H-9024-SE1, deck mount faucet with swing spout. Spout length to reach over kettle.
- D Special Instructions:
01 Install faucet on stainless steel mounting bracket. Rear right side.
02 Anchor kettle to stand.
03 Anchor stand to floor."

ITEM -4

PAGE 11 4000 - 37

ITEM NO. 20GG NUMBER NOT USED

CHANGE to read as follows:

"ITEM NO. 20GG HOSE REEL

- A One (1) - Component Hardware, model KHR-1035-OSS, open body, hose reel.
- B To include:
01 35'-0" hose.
02 Stainless steel hose reel assembly.
03 Model KL50-X197 vacuum breaker.
- C Special Instructions:
01 Install per details and drawings.
02 Anchor to wall."

ITEM -5

PAGE 11 4000 - 43

ITEM NO. 37GG WORK TABLE

ADD the following to paragraph B.:

"06 Elevated shelf per details and drawings. Wall mounted above top."

ADD the following to paragraph C.:

"03 Set shelf bottom edge 78" AFF."

ITEM -6

PAGE 11 4000 - 72

ITEM NO. 11FD WORK TABLE

CHANGE paragraph B., 04 to read as follows:

"04 18" x 20" x 3/4" deep recessed top with 18" x 18" x 11-1/4" deep sink compartment per detail."

ADD the following to paragraph B.:

"09 Marine edge top."

"10 14 ga. stainless steel bracket below top with cutting board holder. Construct per detail."

ADD the following to paragraph C.:

"05 Richlite 3/4" thick, reversible, NSF approved, cutting board with finger hole."

ADD the following to paragraph D.:

"03 Cutting board to fit into recessed top of sink compartment."

ITEM -7

PAGE 11 4000 - 77

ITEM NO. 23FD MOBILE RANGE

CHANGE paragraph A., to read as follows:

"A One (1) - Montague, model 136-5, six burner range with oven base, natural gas."

DELETE paragraph B., 03.

ITEM -8

PAGE 11 4000 - 78

ITEM NO. 26FD MOBILE CHAR-BROILER

ADD the following to paragraph B.:

"08 10" deep stainless steel service shelf with utility bar."

"09 Two (2) smoker boxes."

ITEM -9

PAGE 11 4000 - 87

ITEM NO. 64FD WORK TABLE

CHANGE paragraph B., 04 to read as follows:

"04 18" x 20" x 3/4" deep recessed top with 18" x 18" x 11-1/4" deep sink compartment per detail."

ADD the following to paragraph B.:

"09 Marine edge top."

"10 14 ga. stainless steel bracket below top with cutting board holder. Construct per detail."

ADD the following to paragraph C.:

"05 Richlite 3/4" thick, reversible, NSF approved, cutting board with finger hole."

ADD the following to paragraph D.:

"03 Cutting board to fit into recessed top of sink compartment."

ITEM -10

PAGE 11 4000 - 87

ITEM NO. 65FD NUMBER NOT USED

CHANGE to read as follows:

"ITEM NO. 65FD HOSE REEL"

A One (1) - Component Hardware, model KHR-1035-OSS, open body, hose reel.

B To include:

01 35'-0" hose.

02 Stainless steel hose reel assembly.

03 Model KL50-X197 vacuum breaker.

- C Special Instructions:
01 Install per details and drawings.
02 Anchor to wall.”

ITEM -11

PAGE 11 4000 - 95

ITEM NO. 28CB ICE MAKER

ADD the following Approved Manufacturer:

“B. Scotsman”

ITEM -12

PAGE 11 4000 - 97

ITEM NO. 65GG DISHWASHER W/ BOOSTER HEATER

ADD the following Approved Manufacturer:

“B. MEIKO”

ITEM -13

PAGE 11 4000 - 98

ITEM NO. 41BQ DISHWASHER W/ BOOSTER HEATER

ADD the following Approved Manufacturer:

“B. MEIKO”

ITEM -14

PAGE 11 4000 - 98

ITEM NO. 43BQ DISHWASHER W/ BOOSTER HEATER

ADD the following Approved Manufacturer:

“B. MEIKO”

ITEM -15

PAGE 11 4000 - 99

ITEM NO. 55BQ ICE MAKER

ADD the following Approved Manufacturer:

“B. Scotsman”

ITEM -16

PAGE 11 4000 - 101

ITEM NO. 59FD ICE MAKER

ADD the following Approved Manufacturer:

“B. Scotsman”

ITEM -17

PAGE 11 4000 - 101

ITEM NO. 69FD DISHWASHER W/BOOSTER HEATER

ADD the following Approved Alternate Manufacturer:

“B. MEIKO”

END OF ADDENDUM