

ADDENDUM # 014

Date: 07/11/18

RE: Cherokee Nation Entertainment
Tahlequah Casino

From: James R Childers Architect, Inc.
45 South 4th Street
Fort Smith, Arkansas 72901

This addendum forms part of the Contract Documents, and modifies the documents as noted below. Bidder must acknowledge receipt of this addendum in the FMC Bid Form. Failure to do so may subject the bidder to disqualification.

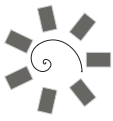
Item 1 Architecture Sheets:

A1.1 Enlarged Floor Plan - Gaming
A1.4 Enlarged Floor Plan – Banquet BOH
A1.5 Enlarged Floor Plan – North
A1.19 Interior Elevation
A2.20 Interior Elevation
A2.21 Interior Elevation
A6.11 Enlarged RCP – Gaming
A6.14 Enlarged RCP – Banquet BOH
A6.15 Enlarged RCP – North

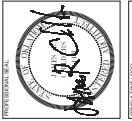
Item 2 Structure Summary of Changes

Item 3 Structure Drawings

Item 4 Civil Drawings



James R. Childers
Architect, Inc.
PO Box 433, 27901
Raleigh, NC 27602
www.jrchilders.com

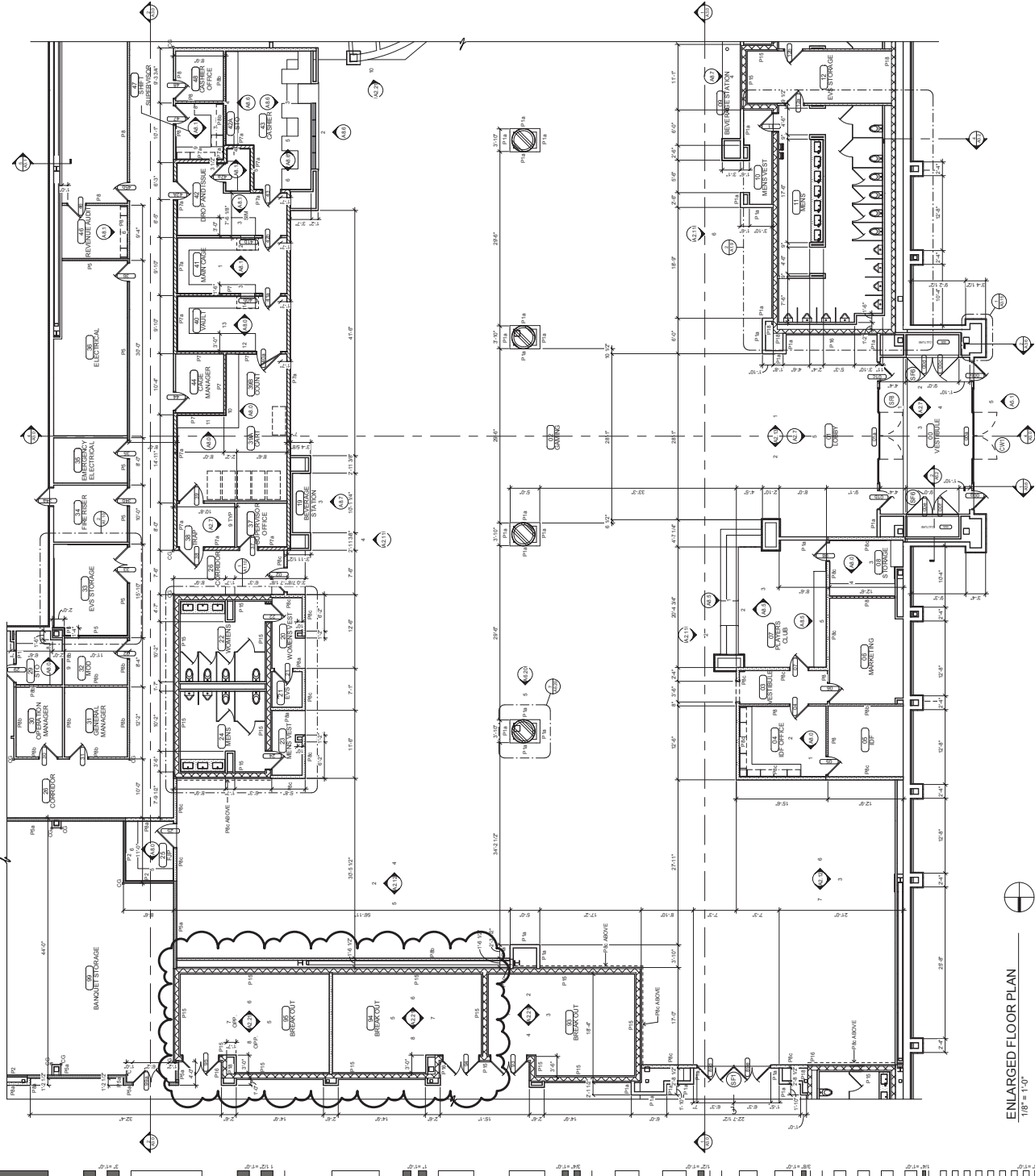


CHEROKEE NATION ENTERTAINMENT
TALEQUAH CASINO
TALEQUAH, OKLAHOMA

PROJECT NAME: BID PACKAGE 6

1	GENERAL CONTRACTOR
2	MECHANICAL CONTRACTOR
3	ELECTRICAL CONTRACTOR
4	PLUMBING CONTRACTOR
5	PAINT CONTRACTOR
6	CONCRETE CONTRACTOR

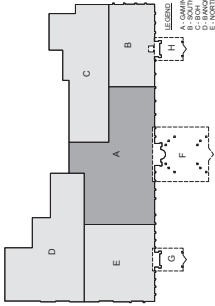
DATE: 02/18/14
DRAWING NO: A1.1
PROJECT: CHEROKEE NATION ENTERTAINMENT
ENLARGED FLOOR PLAN - GAMING



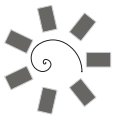
PARTITION TYPES

1	1-HOUR FIRE BARRIER SOUND PARTITION - LAMB (P1)
2	1-HOUR FIRE BARRIER SOUND PARTITION - LAMB (P2)
3	1-HOUR FIRE BARRIER SOUND PARTITION - LAMB (P3)
4	1-HOUR FIRE BARRIER SOUND PARTITION - LAMB (P4)
5	1-HOUR FIRE BARRIER SOUND PARTITION - LAMB (P5)
6	1-HOUR FIRE BARRIER SOUND PARTITION - LAMB (P6)
7	1-HOUR FIRE BARRIER SOUND PARTITION - LAMB (P7)
8	1-HOUR FIRE BARRIER SOUND PARTITION - LAMB (P8)
9	1-HOUR FIRE BARRIER SOUND PARTITION - LAMB (P9)
10	1-HOUR FIRE BARRIER SOUND PARTITION - LAMB (P10)
11	1-HOUR FIRE BARRIER SOUND PARTITION - LAMB (P11)
12	1-HOUR FIRE BARRIER SOUND PARTITION - LAMB (P12)
13	1-HOUR FIRE BARRIER SOUND PARTITION - LAMB (P13)
14	1-HOUR FIRE BARRIER SOUND PARTITION - LAMB (P14)
15	1-HOUR FIRE BARRIER SOUND PARTITION - LAMB (P15)
16	1-HOUR FIRE BARRIER SOUND PARTITION - LAMB (P16)
17	1-HOUR FIRE BARRIER SOUND PARTITION - LAMB (P17)
18	1-HOUR FIRE BARRIER SOUND PARTITION - LAMB (P18)
19	1-HOUR FIRE BARRIER SOUND PARTITION - LAMB (P19)
20	1-HOUR FIRE BARRIER SOUND PARTITION - LAMB (P20)
21	1-HOUR FIRE BARRIER SOUND PARTITION - LAMB (P21)
22	1-HOUR FIRE BARRIER SOUND PARTITION - LAMB (P22)
23	1-HOUR FIRE BARRIER SOUND PARTITION - LAMB (P23)
24	1-HOUR FIRE BARRIER SOUND PARTITION - LAMB (P24)
25	1-HOUR FIRE BARRIER SOUND PARTITION - LAMB (P25)
26	1-HOUR FIRE BARRIER SOUND PARTITION - LAMB (P26)
27	1-HOUR FIRE BARRIER SOUND PARTITION - LAMB (P27)
28	1-HOUR FIRE BARRIER SOUND PARTITION - LAMB (P28)
29	1-HOUR FIRE BARRIER SOUND PARTITION - LAMB (P29)
30	1-HOUR FIRE BARRIER SOUND PARTITION - LAMB (P30)
31	1-HOUR FIRE BARRIER SOUND PARTITION - LAMB (P31)
32	1-HOUR FIRE BARRIER SOUND PARTITION - LAMB (P32)
33	1-HOUR FIRE BARRIER SOUND PARTITION - LAMB (P33)
34	1-HOUR FIRE BARRIER SOUND PARTITION - LAMB (P34)
35	1-HOUR FIRE BARRIER SOUND PARTITION - LAMB (P35)
36	1-HOUR FIRE BARRIER SOUND PARTITION - LAMB (P36)
37	1-HOUR FIRE BARRIER SOUND PARTITION - LAMB (P37)
38	1-HOUR FIRE BARRIER SOUND PARTITION - LAMB (P38)
39	1-HOUR FIRE BARRIER SOUND PARTITION - LAMB (P39)
40	1-HOUR FIRE BARRIER SOUND PARTITION - LAMB (P40)
41	1-HOUR FIRE BARRIER SOUND PARTITION - LAMB (P41)
42	1-HOUR FIRE BARRIER SOUND PARTITION - LAMB (P42)
43	1-HOUR FIRE BARRIER SOUND PARTITION - LAMB (P43)
44	1-HOUR FIRE BARRIER SOUND PARTITION - LAMB (P44)
45	1-HOUR FIRE BARRIER SOUND PARTITION - LAMB (P45)
46	1-HOUR FIRE BARRIER SOUND PARTITION - LAMB (P46)
47	1-HOUR FIRE BARRIER SOUND PARTITION - LAMB (P47)
48	1-HOUR FIRE BARRIER SOUND PARTITION - LAMB (P48)
49	1-HOUR FIRE BARRIER SOUND PARTITION - LAMB (P49)
50	1-HOUR FIRE BARRIER SOUND PARTITION - LAMB (P50)
51	1-HOUR FIRE BARRIER SOUND PARTITION - LAMB (P51)
52	1-HOUR FIRE BARRIER SOUND PARTITION - LAMB (P52)
53	1-HOUR FIRE BARRIER SOUND PARTITION - LAMB (P53)
54	1-HOUR FIRE BARRIER SOUND PARTITION - LAMB (P54)
55	1-HOUR FIRE BARRIER SOUND PARTITION - LAMB (P55)
56	1-HOUR FIRE BARRIER SOUND PARTITION - LAMB (P56)
57	1-HOUR FIRE BARRIER SOUND PARTITION - LAMB (P57)
58	1-HOUR FIRE BARRIER SOUND PARTITION - LAMB (P58)
59	1-HOUR FIRE BARRIER SOUND PARTITION - LAMB (P59)
60	1-HOUR FIRE BARRIER SOUND PARTITION - LAMB (P60)
61	1-HOUR FIRE BARRIER SOUND PARTITION - LAMB (P61)
62	1-HOUR FIRE BARRIER SOUND PARTITION - LAMB (P62)
63	1-HOUR FIRE BARRIER SOUND PARTITION - LAMB (P63)
64	1-HOUR FIRE BARRIER SOUND PARTITION - LAMB (P64)
65	1-HOUR FIRE BARRIER SOUND PARTITION - LAMB (P65)
66	1-HOUR FIRE BARRIER SOUND PARTITION - LAMB (P66)
67	1-HOUR FIRE BARRIER SOUND PARTITION - LAMB (P67)
68	1-HOUR FIRE BARRIER SOUND PARTITION - LAMB (P68)
69	1-HOUR FIRE BARRIER SOUND PARTITION - LAMB (P69)
70	1-HOUR FIRE BARRIER SOUND PARTITION - LAMB (P70)
71	1-HOUR FIRE BARRIER SOUND PARTITION - LAMB (P71)
72	1-HOUR FIRE BARRIER SOUND PARTITION - LAMB (P72)
73	1-HOUR FIRE BARRIER SOUND PARTITION - LAMB (P73)
74	1-HOUR FIRE BARRIER SOUND PARTITION - LAMB (P74)
75	1-HOUR FIRE BARRIER SOUND PARTITION - LAMB (P75)
76	1-HOUR FIRE BARRIER SOUND PARTITION - LAMB (P76)
77	1-HOUR FIRE BARRIER SOUND PARTITION - LAMB (P77)
78	1-HOUR FIRE BARRIER SOUND PARTITION - LAMB (P78)
79	1-HOUR FIRE BARRIER SOUND PARTITION - LAMB (P79)
80	1-HOUR FIRE BARRIER SOUND PARTITION - LAMB (P80)
81	1-HOUR FIRE BARRIER SOUND PARTITION - LAMB (P81)
82	1-HOUR FIRE BARRIER SOUND PARTITION - LAMB (P82)
83	1-HOUR FIRE BARRIER SOUND PARTITION - LAMB (P83)
84	1-HOUR FIRE BARRIER SOUND PARTITION - LAMB (P84)
85	1-HOUR FIRE BARRIER SOUND PARTITION - LAMB (P85)
86	1-HOUR FIRE BARRIER SOUND PARTITION - LAMB (P86)
87	1-HOUR FIRE BARRIER SOUND PARTITION - LAMB (P87)
88	1-HOUR FIRE BARRIER SOUND PARTITION - LAMB (P88)
89	1-HOUR FIRE BARRIER SOUND PARTITION - LAMB (P89)
90	1-HOUR FIRE BARRIER SOUND PARTITION - LAMB (P90)
91	1-HOUR FIRE BARRIER SOUND PARTITION - LAMB (P91)
92	1-HOUR FIRE BARRIER SOUND PARTITION - LAMB (P92)
93	1-HOUR FIRE BARRIER SOUND PARTITION - LAMB (P93)
94	1-HOUR FIRE BARRIER SOUND PARTITION - LAMB (P94)
95	1-HOUR FIRE BARRIER SOUND PARTITION - LAMB (P95)
96	1-HOUR FIRE BARRIER SOUND PARTITION - LAMB (P96)
97	1-HOUR FIRE BARRIER SOUND PARTITION - LAMB (P97)
98	1-HOUR FIRE BARRIER SOUND PARTITION - LAMB (P98)
99	1-HOUR FIRE BARRIER SOUND PARTITION - LAMB (P99)
100	1-HOUR FIRE BARRIER SOUND PARTITION - LAMB (P100)

NOTE: ALL PARTITIONS ARE TYPE P1 UNLESS NOTED OTHERWISE.



ENLARGED FLOOR PLAN
1/8" = 1'-0"



James R. Childers
Architect, Inc.
1000 South Main Street
PO Box 433279
Tulsa, Oklahoma 74116
www.jrchilders.com

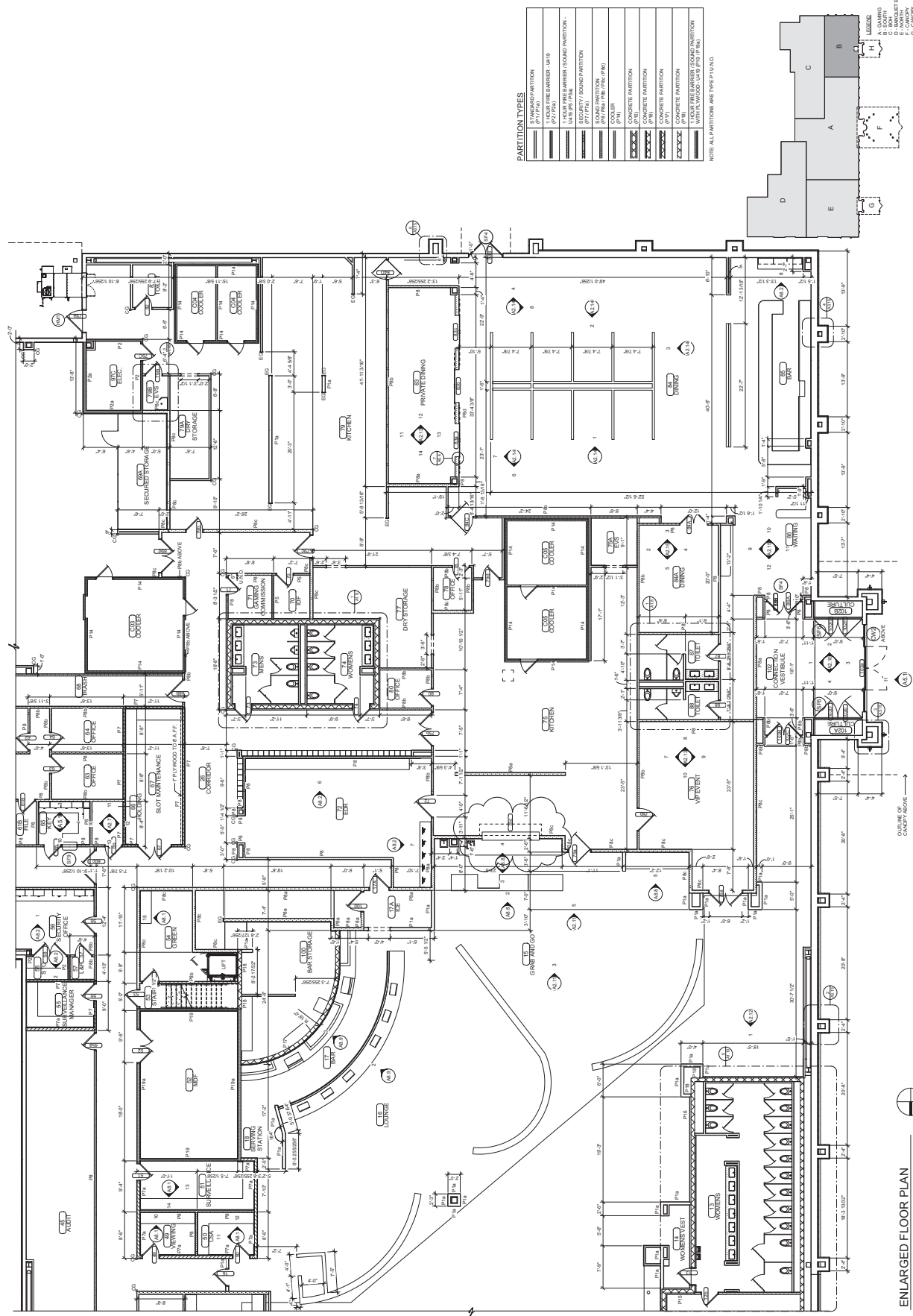


CHEROKEE NATION ENTERTAINMENT
TALEQUAH CASINO
TALEQUAH, OKLAHOMA

BID PACKAGE 5

1	MECHANICAL	MECHANICAL
2	ELECTRICAL	ELECTRICAL
3	PLUMBING	PLUMBING
4	CONCRETE	CONCRETE
5	WOODWORK	WOODWORK
6	PAINT	PAINT
7	GLASS	GLASS
8	IRONWORK	IRONWORK
9	STEEL	STEEL
10	MECHANICAL	MECHANICAL
11	ELECTRICAL	ELECTRICAL
12	PLUMBING	PLUMBING
13	CONCRETE	CONCRETE
14	WOODWORK	WOODWORK
15	PAINT	PAINT
16	GLASS	GLASS
17	IRONWORK	IRONWORK
18	STEEL	STEEL

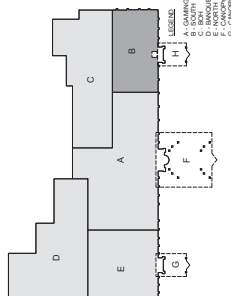
DATE: 06/15/17
PROJECT: TALEQUAH CASINO
A1.2
ENLARGED FLOOR PLAN - SOUTH



PARTITION TYPES

1	STANDARD PARTITION (P11/P12)
2	1 HOUR FIRE BARRIER (SCAD PARTITION - P13)
3	2 HOUR FIRE BARRIER (SCAD PARTITION - P14)
4	GLASS PARTITION (P15)
5	GLASS PARTITION (P16)
6	GLASS PARTITION (P17)
7	GLASS PARTITION (P18)
8	GLASS PARTITION (P19)
9	GLASS PARTITION (P20)
10	GLASS PARTITION (P21)
11	GLASS PARTITION (P22)
12	GLASS PARTITION (P23)
13	GLASS PARTITION (P24)
14	GLASS PARTITION (P25)

NOTE: ALL PARTITIONS ARE TYPE P11 AND P12.

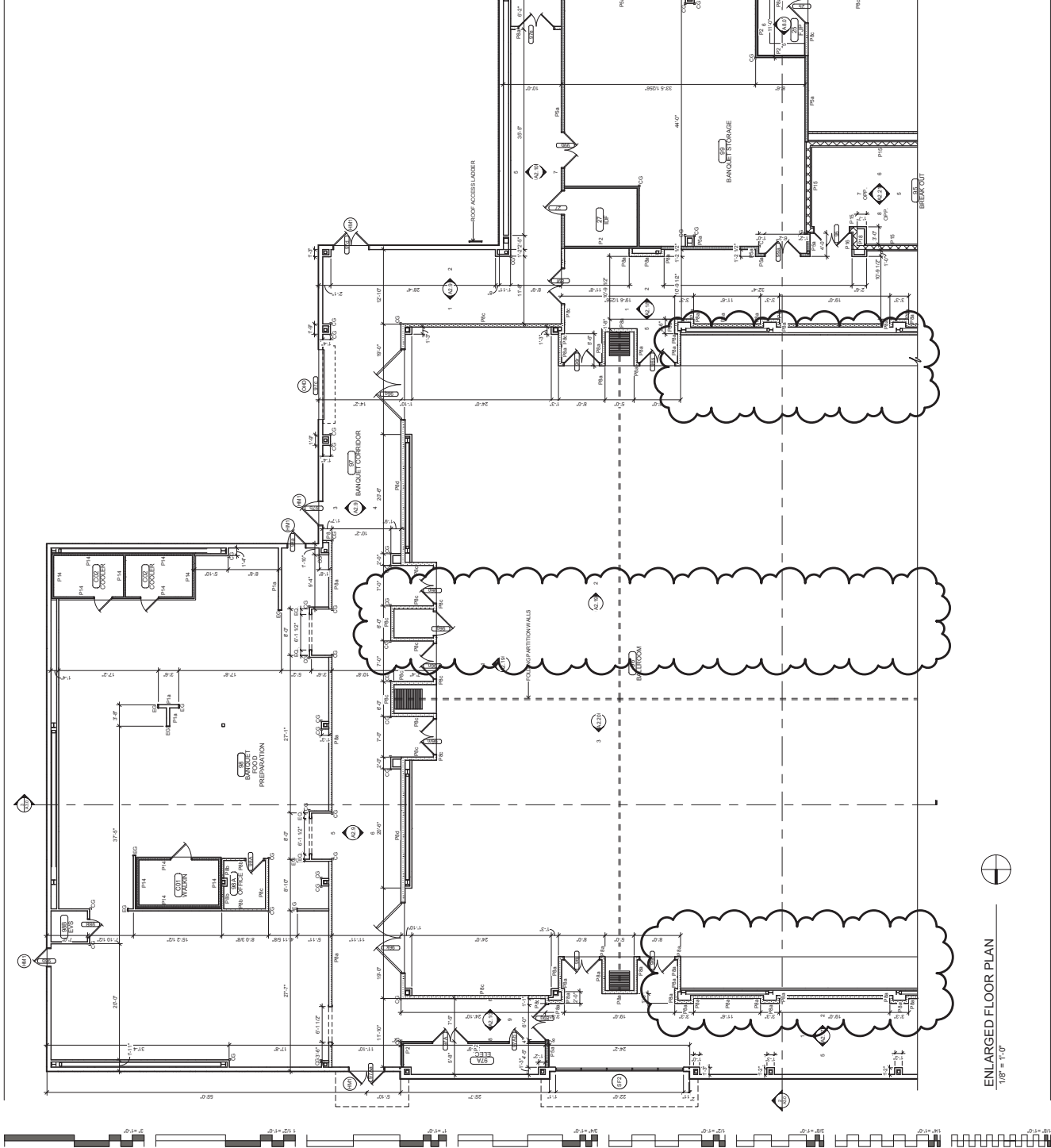
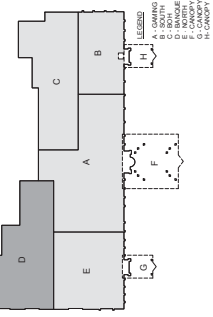


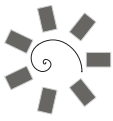
ENLARGED FLOOR PLAN
1/8" = 1'-0"

PARTITION TYPES

1. 1/2" GYP BOARD PARTITION (PT1)	1. 1/2" GYP BOARD PARTITION (PT1)
2. 1/2" GYP BOARD PARTITION (PT2)	2. 1/2" GYP BOARD PARTITION (PT2)
3. 1/2" GYP BOARD PARTITION (PT3)	3. 1/2" GYP BOARD PARTITION (PT3)
4. 1/2" GYP BOARD PARTITION (PT4)	4. 1/2" GYP BOARD PARTITION (PT4)
5. 1/2" GYP BOARD PARTITION (PT5)	5. 1/2" GYP BOARD PARTITION (PT5)
6. 1/2" GYP BOARD PARTITION (PT6)	6. 1/2" GYP BOARD PARTITION (PT6)
7. 1/2" GYP BOARD PARTITION (PT7)	7. 1/2" GYP BOARD PARTITION (PT7)
8. 1/2" GYP BOARD PARTITION (PT8)	8. 1/2" GYP BOARD PARTITION (PT8)
9. 1/2" GYP BOARD PARTITION (PT9)	9. 1/2" GYP BOARD PARTITION (PT9)
10. 1/2" GYP BOARD PARTITION (PT10)	10. 1/2" GYP BOARD PARTITION (PT10)
11. 1/2" GYP BOARD PARTITION (PT11)	11. 1/2" GYP BOARD PARTITION (PT11)
12. 1/2" GYP BOARD PARTITION (PT12)	12. 1/2" GYP BOARD PARTITION (PT12)
13. 1/2" GYP BOARD PARTITION (PT13)	13. 1/2" GYP BOARD PARTITION (PT13)
14. 1/2" GYP BOARD PARTITION (PT14)	14. 1/2" GYP BOARD PARTITION (PT14)
15. 1/2" GYP BOARD PARTITION (PT15)	15. 1/2" GYP BOARD PARTITION (PT15)
16. 1/2" GYP BOARD PARTITION (PT16)	16. 1/2" GYP BOARD PARTITION (PT16)
17. 1/2" GYP BOARD PARTITION (PT17)	17. 1/2" GYP BOARD PARTITION (PT17)
18. 1/2" GYP BOARD PARTITION (PT18)	18. 1/2" GYP BOARD PARTITION (PT18)
19. 1/2" GYP BOARD PARTITION (PT19)	19. 1/2" GYP BOARD PARTITION (PT19)
20. 1/2" GYP BOARD PARTITION (PT20)	20. 1/2" GYP BOARD PARTITION (PT20)

NOTE: ALL PARTITIONS ARE TYPE #1 UNLESS NOTED OTHERWISE.





James R. Childers
Architect, Inc.
100 South Main Street
Fayetteville, AR 72701
www.jrchilders.com



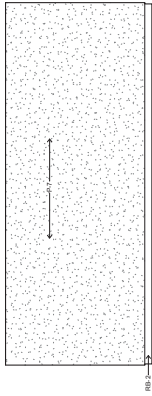
CHEROKEE NATION ENTERTAINMENT
TAHLEQUAH CASINO
TAHLEQUAH, OKLAHOMA

BID PACKAGE 6

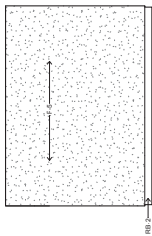
1	PROVIDE	CONCRETE
2	PROVIDE	WOOD
3	PROVIDE	GLASS

DATE: 06/22/18
PROJECT NO: 18-06

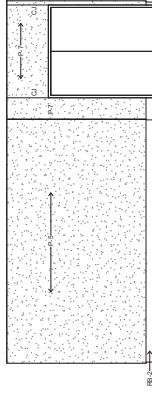
A2.21
INTERIOR
ELEVATIONS



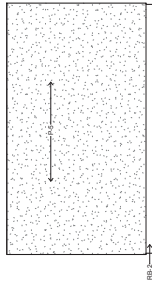
1 INTERIOR ELEVATION
1/4" = 1'-0"



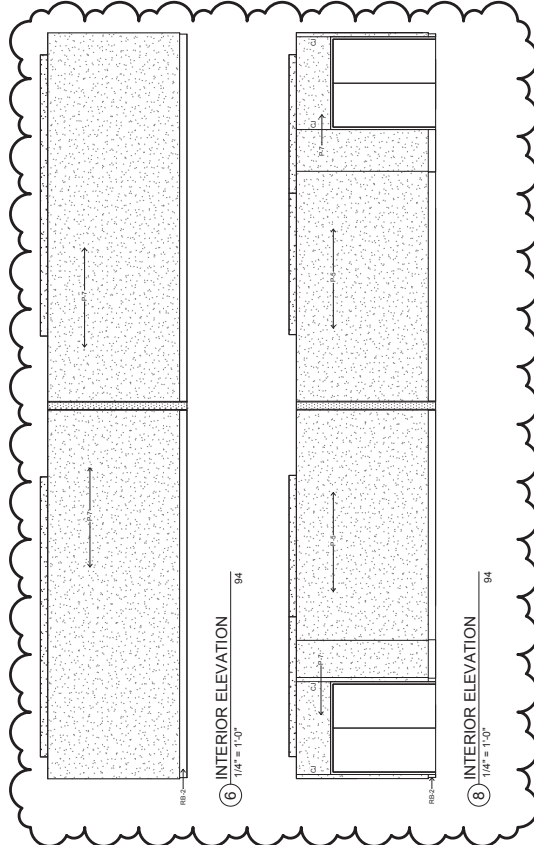
2 INTERIOR ELEVATION
1/4" = 1'-0"



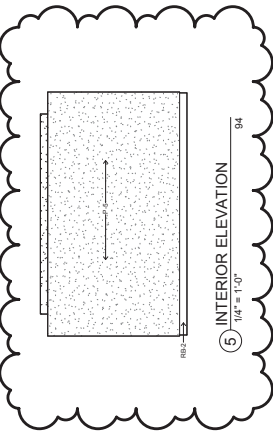
3 INTERIOR ELEVATION
1/4" = 1'-0"



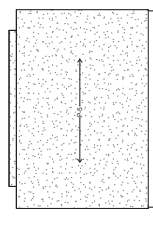
4 INTERIOR ELEVATION
1/4" = 1'-0"



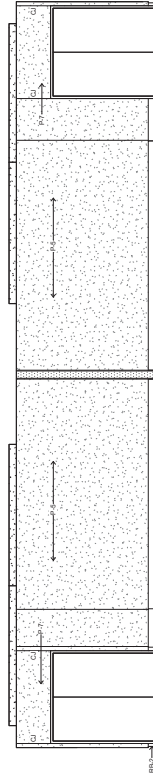
5 INTERIOR ELEVATION
1/4" = 1'-0"



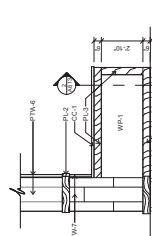
6 INTERIOR ELEVATION
1/4" = 1'-0"



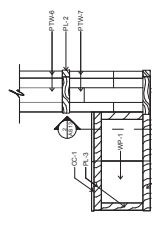
7 INTERIOR ELEVATION
1/4" = 1'-0"



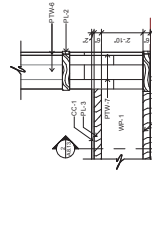
8 INTERIOR ELEVATION
1/4" = 1'-0"



9 INTERIOR ELEVATION
1/4" = 1'-0"



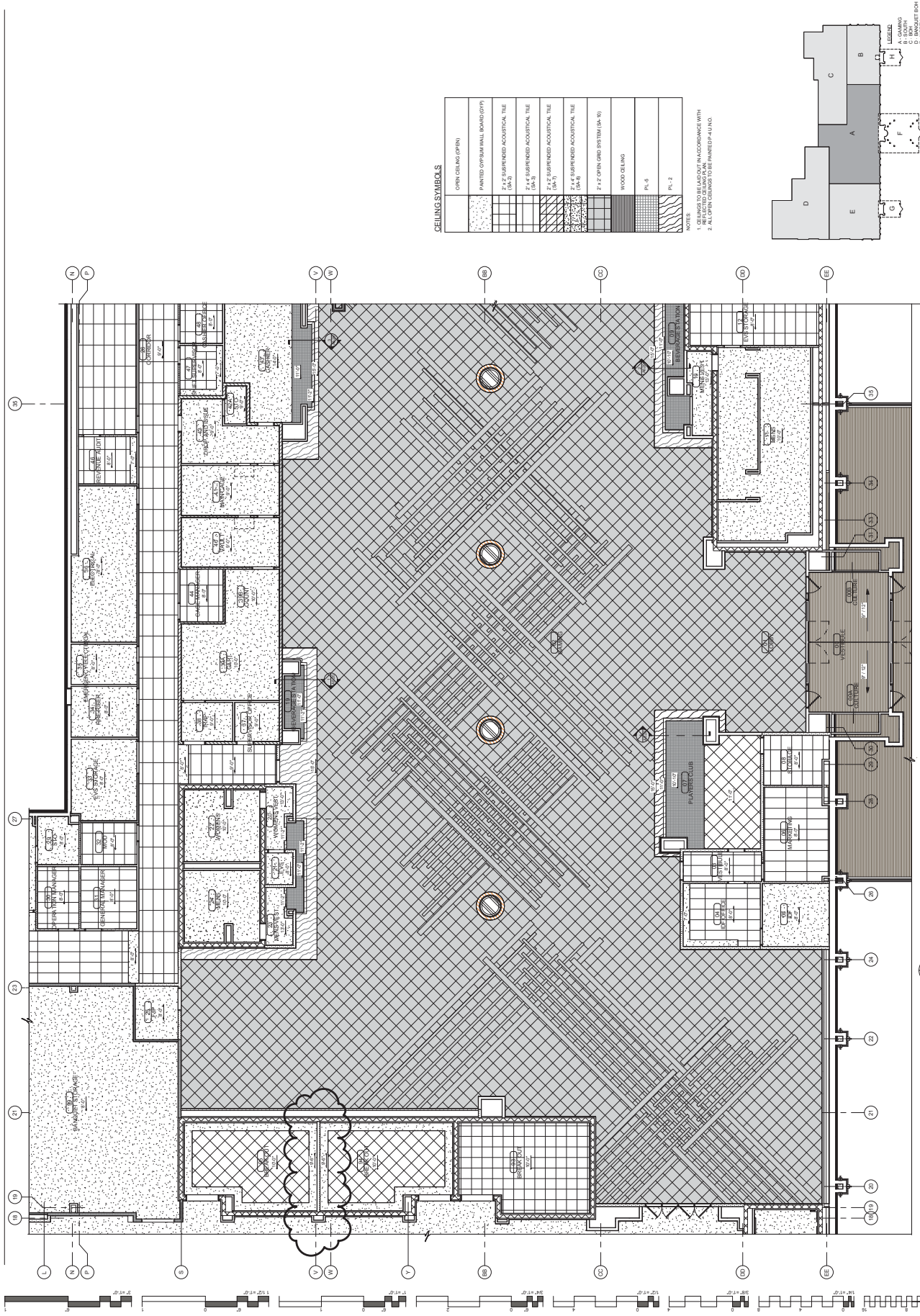
10 INTERIOR ELEVATION
1/4" = 1'-0"



11 INTERIOR ELEVATION
1/4" = 1'-0"

12 INTERIOR ELEVATION
1/4" = 1'-0"



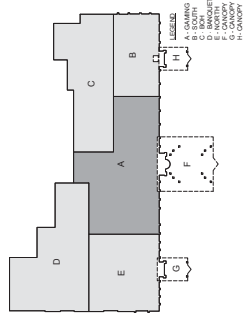


CEILING SYMBOLS

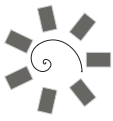
[Symbol]	OPEN CEILING (OPEN)
[Symbol]	PAINTED OPTIMA WALL BOARD (OW)
[Symbol]	2" F. F. SURFACED ACOUSTICAL TILE (SA-2)
[Symbol]	2" F. F. SURFACED ACOUSTICAL TILE (SA-3)
[Symbol]	2" F. F. SURFACED ACOUSTICAL TILE (SA-4)
[Symbol]	2" F. F. SURFACED ACOUSTICAL TILE (SA-5)
[Symbol]	2" F. F. SURFACED ACOUSTICAL TILE (SA-6)
[Symbol]	2" F. F. SURFACED ACOUSTICAL TILE (SA-7)
[Symbol]	2" F. F. SURFACED ACOUSTICAL TILE (SA-8)
[Symbol]	2" F. F. SURFACED ACOUSTICAL TILE (SA-9)
[Symbol]	2" F. F. SURFACED ACOUSTICAL TILE (SA-10)
[Symbol]	WOOD CEILING
[Symbol]	PL-6
[Symbol]	PL-2

NOTES:

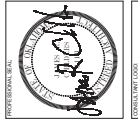
- SEE SCHEDULE FOR DIMENSIONS AND MATERIALS.
- REFER TO NOTES FOR INFORMATION REGARDING THE REFLECTED CEILING SYSTEMS.
- REFER TO NOTES FOR INFORMATION REGARDING THE REFLECTED CEILING SYSTEMS.
- REFER TO NOTES FOR INFORMATION REGARDING THE REFLECTED CEILING SYSTEMS.



ENLARGED REFLECTED CEILING PLAN
1/8" = 1'-0"



James R. Childers
Architect, Inc.
1000 West 10th Street
Tulsa, Oklahoma 74103
Phone: 918.438.2701
www.jrchilders.com



PROJECT NO. 0001



CHEROKEE NATION ENTERTAINMENT
TAHLEQUAH CASINO
TAHLEQUAH, OKLAHOMA

PROJECT TITLE: BID PACKAGE 6

1. DATE	DESCRIPTION
06/22/18	ISSUED FOR BIDDING
06/22/18	ISSUED FOR BIDDING
06/22/18	ISSUED FOR BIDDING
06/22/18	ISSUED FOR BIDDING

DATE: 06/22/18

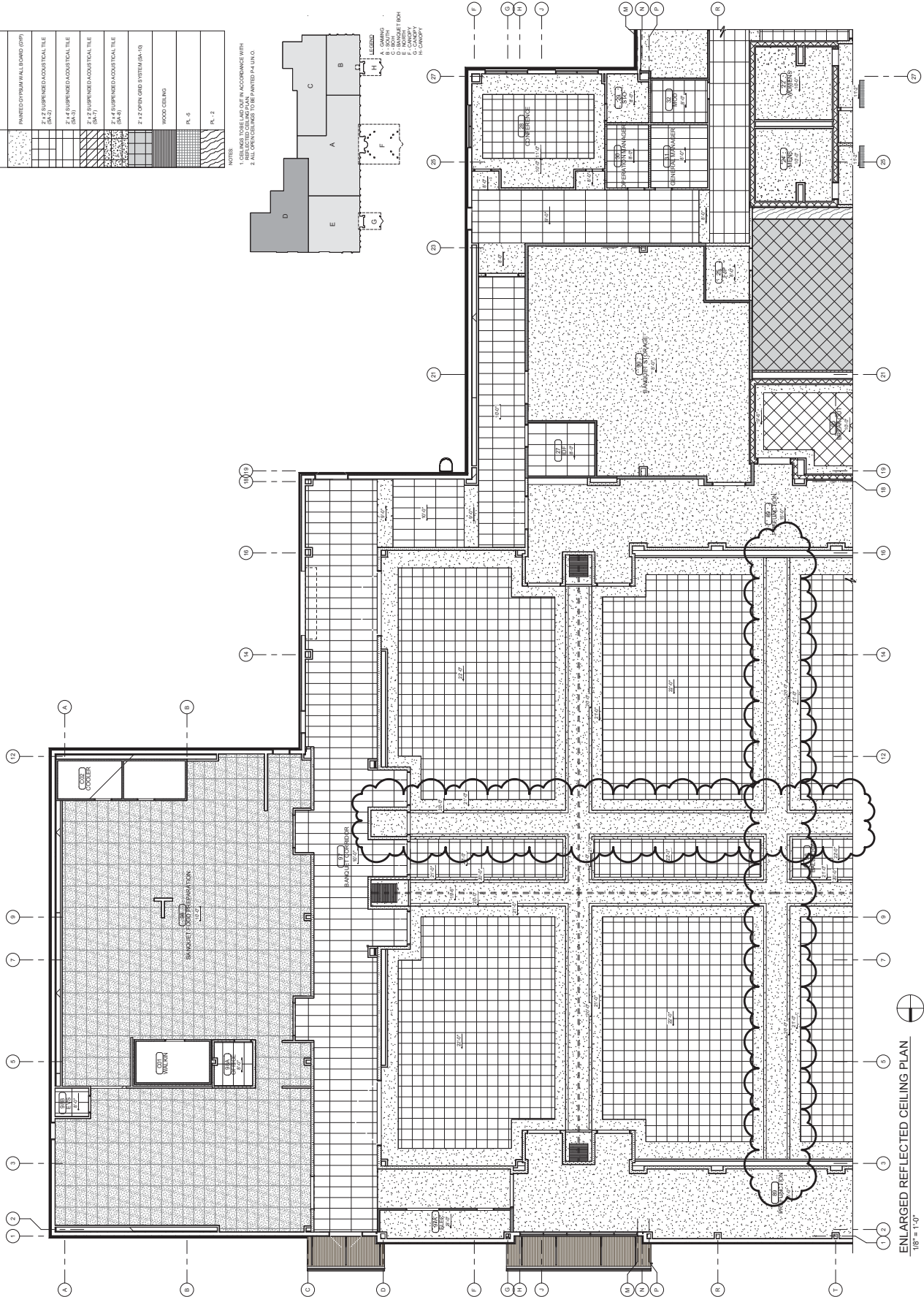
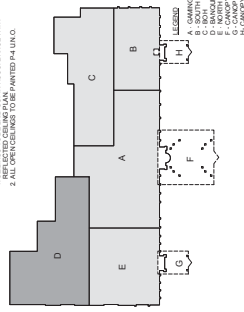
AG. 14

ENLARGED CEILING
PLAN - BANQUET
BOY

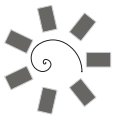
CEILING SYMBOLS

	OPEN CEILING (OPEN)
	PAINTED DRYWALL (PAINTED)
	2 x 2 SUSPENDED ACOUSTICAL TILE (SAT)
	2 x 4 SUSPENDED ACOUSTICAL TILE (SAT)
	2 x 2 SUSPENDED ACOUSTICAL TILE (SAT)
	2 x 4 SUSPENDED ACOUSTICAL TILE (SAT)
	2 x 2 OPEN GRID SYSTEM (OGS)
	WOOD CEILING
	R-5
	R-2

NOTES:
1. CEILING TO BE LAID OUT IN ACCORDANCE WITH
2. ALL OPENINGS TO BE PAINTED PA UNO.



ENLARGED REFLECTED CEILING PLAN
1/8" = 1'-0"



James R. Childers
Architect, Inc.
100 South Main Street
PO Box 100
Tahlequah, Oklahoma 74464
www.jrchilders.com



PROFESSIONAL SEAL



CHEROKEE NATION ENTERTAINMENT
TAHLEQUAH CASINO
TAHLEQUAH, OKLAHOMA

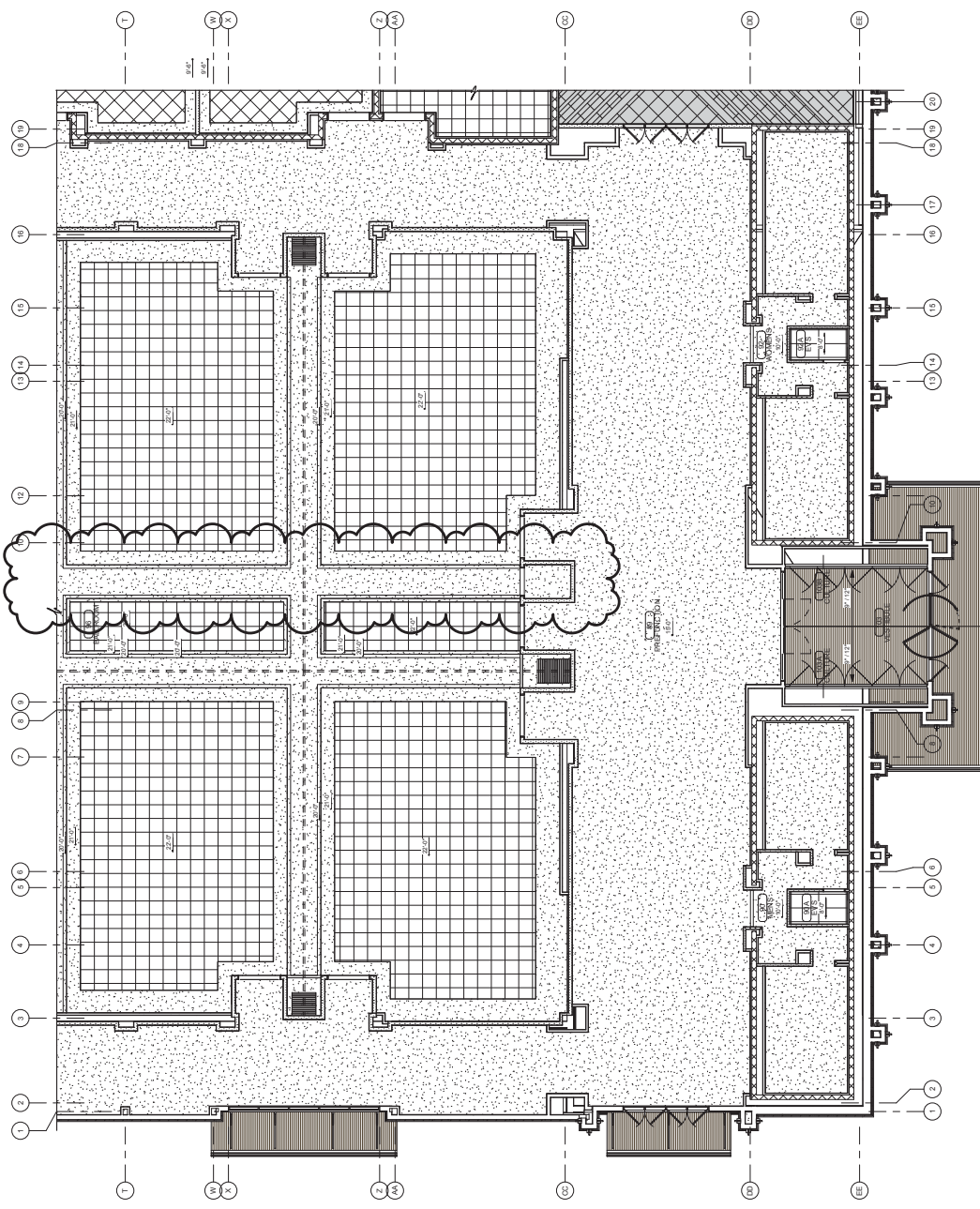
PROJECT NAME: BID PACKAGE 6

NO.	DATE	DESCRIPTION
1	06/22/18	ISSUED FOR BIDDING
2	06/22/18	REVISED FOR BIDDING
3	06/22/18	REVISED FOR BIDDING
4	06/22/18	REVISED FOR BIDDING

DATE: 06/22/18
TIME: 11:06

SCALE: A6.15

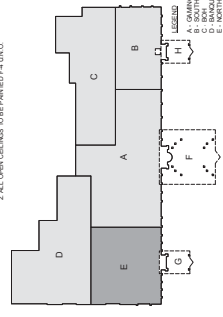
REFLECTED CEILING
PLAN - NORTH



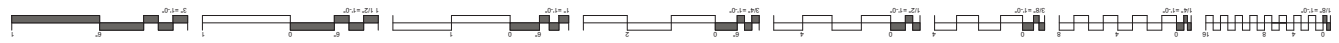
CEILING SYMBOLS

OPEN CEILING (OPT)	PAINTED OPTIMAL BOARD (OP)
1" x 2" SUSPENDED ACoustICAL TILE (SA-1)	2" x 2" SUSPENDED ACoustICAL TILE (SA-2)
4" SUSPENDED ACoustICAL TILE (SA-3)	4" SUSPENDED ACoustICAL TILE (SA-4)
4" SUSPENDED ACoustICAL TILE (SA-5)	4" SUSPENDED ACoustICAL TILE (SA-6)
4" SUSPENDED ACoustICAL TILE (SA-7)	4" SUSPENDED ACoustICAL TILE (SA-8)
4" SUSPENDED ACoustICAL TILE (SA-9)	4" SUSPENDED ACoustICAL TILE (SA-10)
2" x 2" OPEN GRID SYSTEM (SA-11)	WOOD OF LINE
PL-5	PL-2

NOTES:
1. REFER TO ALL NOTES ON SHEET 100 IN ACCORDANCE WITH PERMITS.
2. ALL CEILING SYSTEMS TO BE PERMITTED BY LOCAL CODES.



ENLARGED REFLECTED CEILING PLAN
1/8" = 1'-0"



Jason R. Myers, P.E.
James S. Beatty, P.E.
Tim R. Wank, P.E.



MYERS – BEATTY ENGINEERING, PLLC

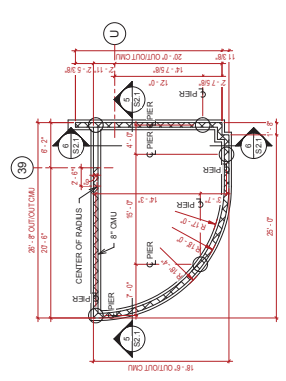
2411 Fayetteville Rd, Ste B
Van Buren, AR 72956
P 479.474.4412
F 479.474.4413

705 N. Rockcliff Rd
Fayetteville, AR 72701
P 479.445.3261
F 479.443.4588

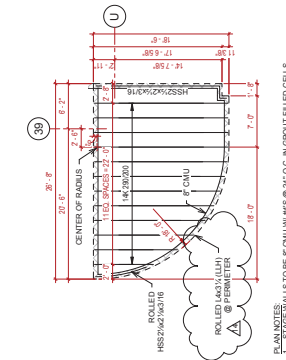
July 11, 2018

Tahlequah Casino Addendum #14 Summary

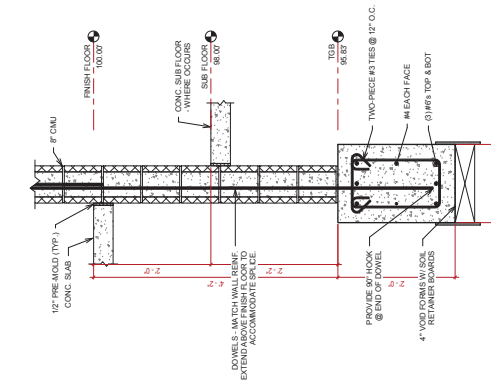
Sheet No.	Addendum
S2.1	<ul style="list-style-type: none">• Added slab recess for equipment lift.• Modified location of kitchen cooler / freezers.
S3.6	<ul style="list-style-type: none">• Note corrected.



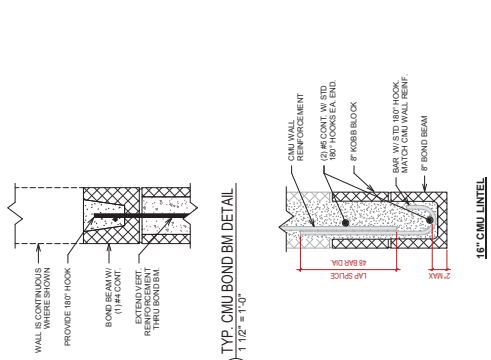
1 FOUNDATION PLAN - STAGE
 1/8" = 1'-0"



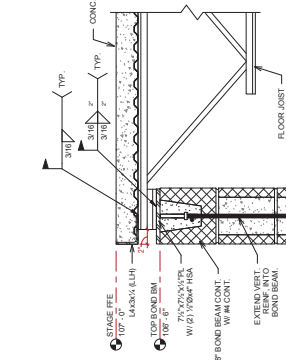
2 ROOF FRAMING PLAN - STAGE
 1/8" = 1'-0"



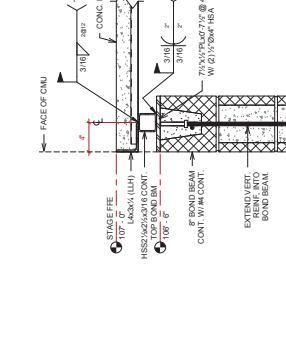
5 GRADE BM/W/CMU @ STAGE
 1" = 1'-0"



6 TYP. CMU LINTEL DETAIL
 1 1/2" = 1'-0"



3 TYP. JOIST CONNECTION @ CMU
 1 1/2" = 1'-0"



4 HSS SPACER @ CMU
 1 1/2" = 1'-0"

REINFORCED CONCRETE MASONRY

1. THE REINFORCED CONCRETE MASONRY FOR THIS PROJECT HAS BEEN DESIGNED AND DETAILED IN ACCORDANCE WITH WORKING STRESS DESIGN METHOD. ALL WALLS SHALL HAVE A MINIMUM COMPRESSIVE STRENGTH, $f_m \geq 1500$ PSI. MASONRY UNITS SHALL BE NORMAL WEIGHT BLOCK CONFORMING TO ASTM OR AGR GRADE N, TYPE I AND SHALL HAVE AN MINIMUM NET AREA COMPRESSIVE STRENGTH, $f_m \geq 1500$ PSI. ALL MASONRY SHALL BE CONSTRUCTED IN ACCORDANCE WITH THE FOLLOWING:
2. ALL MASONRY SHALL BE CONSTRUCTED IN ACCORDANCE WITH THE FOLLOWING:
3. ALL MASONRY SHALL BE CONSTRUCTED IN ACCORDANCE WITH THE FOLLOWING:
4. ALL MASONRY SHALL BE CONSTRUCTED IN ACCORDANCE WITH THE FOLLOWING:
5. ALL MASONRY SHALL BE CONSTRUCTED IN ACCORDANCE WITH THE FOLLOWING:
6. ALL MASONRY SHALL BE CONSTRUCTED IN ACCORDANCE WITH THE FOLLOWING:
7. ALL MASONRY SHALL BE CONSTRUCTED IN ACCORDANCE WITH THE FOLLOWING:
8. ALL MASONRY SHALL BE CONSTRUCTED IN ACCORDANCE WITH THE FOLLOWING:
9. ALL MASONRY SHALL BE CONSTRUCTED IN ACCORDANCE WITH THE FOLLOWING:
10. ALL MASONRY SHALL BE CONSTRUCTED IN ACCORDANCE WITH THE FOLLOWING:
11. ALL MASONRY SHALL BE CONSTRUCTED IN ACCORDANCE WITH THE FOLLOWING:
12. ALL MASONRY SHALL BE CONSTRUCTED IN ACCORDANCE WITH THE FOLLOWING:
13. ALL MASONRY SHALL BE CONSTRUCTED IN ACCORDANCE WITH THE FOLLOWING:
14. ALL MASONRY SHALL BE CONSTRUCTED IN ACCORDANCE WITH THE FOLLOWING:
15. ALL MASONRY SHALL BE CONSTRUCTED IN ACCORDANCE WITH THE FOLLOWING:
16. ALL MASONRY SHALL BE CONSTRUCTED IN ACCORDANCE WITH THE FOLLOWING:

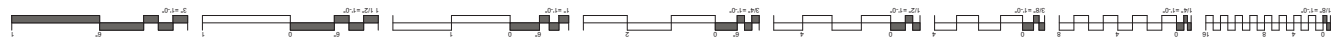
END OF WALL DETAIL

CORNER DETAIL

JAMB DETAIL

CONTROL JOINT

T-JOINT





ADG. PC
 920 W Main
 Oklahoma City, OK 73106
 405.232.5700 ▪ www.adgokc.com

Addendum 14

DATE: 7/11/2018

PROJECT: CNE Tahlequah Casino
 PROJECT NO: 18-010

To the Prospective Bidders of the Work titled above:

This Addendum is to be incorporated into the Contract Documents and modifies the current version of the Contract Documents for the above referenced Project.

The Addendum consists of the following:

Item	Size	No. of Pages
Addendum	8 1/2 x 11	2
Drawings	30" x 42"	21

NARRATIVE SUMMARY OF MODIFICATIONS

The following is a general description of the modifications included in this addendum. The provided list may or may not include all modifications which have been made. The Contractor is advised to make their own review of the Construction Documents to determine all potential impacts to the Contract Price. The Scope of Work presented by the Construction Drawings and Specifications included herein shall be considered included in the submitted bid price.

1. Drainage structure and fire hydrant locations have been adjusted to address an existing conflict (RFI 089).
2. The service drive previously added southwest of the building has been removed per the July 6 *Cost Savings Suggestions* spreadsheet issued to ADG by the Architect (Item 32.01).
3. The south parking lot has been reduced in size per the July 6 *Cost Savings Suggestions* spreadsheet issued to ADG by the Architect (Item 32.01).
4. The limits of various paving types have been modified per the June 28 request of the Owner. These adjustments are also included in the July 6 *Cost Savings Suggestions* spreadsheet issued to ADG by the Architect (Item 32.01).

REVISIONS TO THE PROJECT MANUAL

None

REVISIONS TO THE CONSTRUCTION DRAWINGS

Item 1. Refer to Drawings: As shown below replace the entire drawing sheet with the revised drawings sheet included in this addendum as an attachment.

Replace:

Number	Name	Issue Date
C1.02c	CIVIL SITE PLAN INDEX	June 1, 2018
C1.05c	CIVIL SITE PLAN – AREA 05	June 1, 2018
C1.10c	CIVIL SITE PLAN – AREA 10	June 1, 2018
C1.20c	CIVIL SITE PLAN – AREA 20	June 1, 2018
C1.25c	CIVIL SITE PLAN – AREA 25	June 1, 2018
C1.30c	CIVIL SITE PLAN – AREA 30	June 1, 2018
C1.35c	CIVIL SITE PLAN – AREA 35	June 1, 2018
C1.40c	CIVIL SITE PLAN – AREA 40	June 1, 2018
C1.45c	CIVIL SITE PLAN – AREA 45	June 1, 2018
C2.02b	UTILITY PLAN INDEX	June 1, 2018
C3.02c	EROSION CONTROL PLAN	May 4, 2018
C5.02b	STORM SEWER INDEX	June 1, 2018
C5.10b	STORM SEWER PROFILES	April 27, 2018
C5.15b	STORM SEWER PROFILES	June 1, 2018
C7.02b	WATER INDEX	June 1, 2018
C7.05b	WATER LINE PLAN AND PROFILE – LINE A	June 1, 2018
C8.02c	FINISHED GRADING PLAN – INDEX	June 1, 2018
C8.15c	FINISHED GRADING PLAN – AREA 15	June 1, 2018
C8.30c	FINISHED GRADING PLAN – AREA 30	June 1, 2018
C8.40c	FINISHED GRADING PLAN – AREA 40	June 1, 2018
C8.45c	FINISHED GRADING PLAN – AREA 45	June 1, 2018

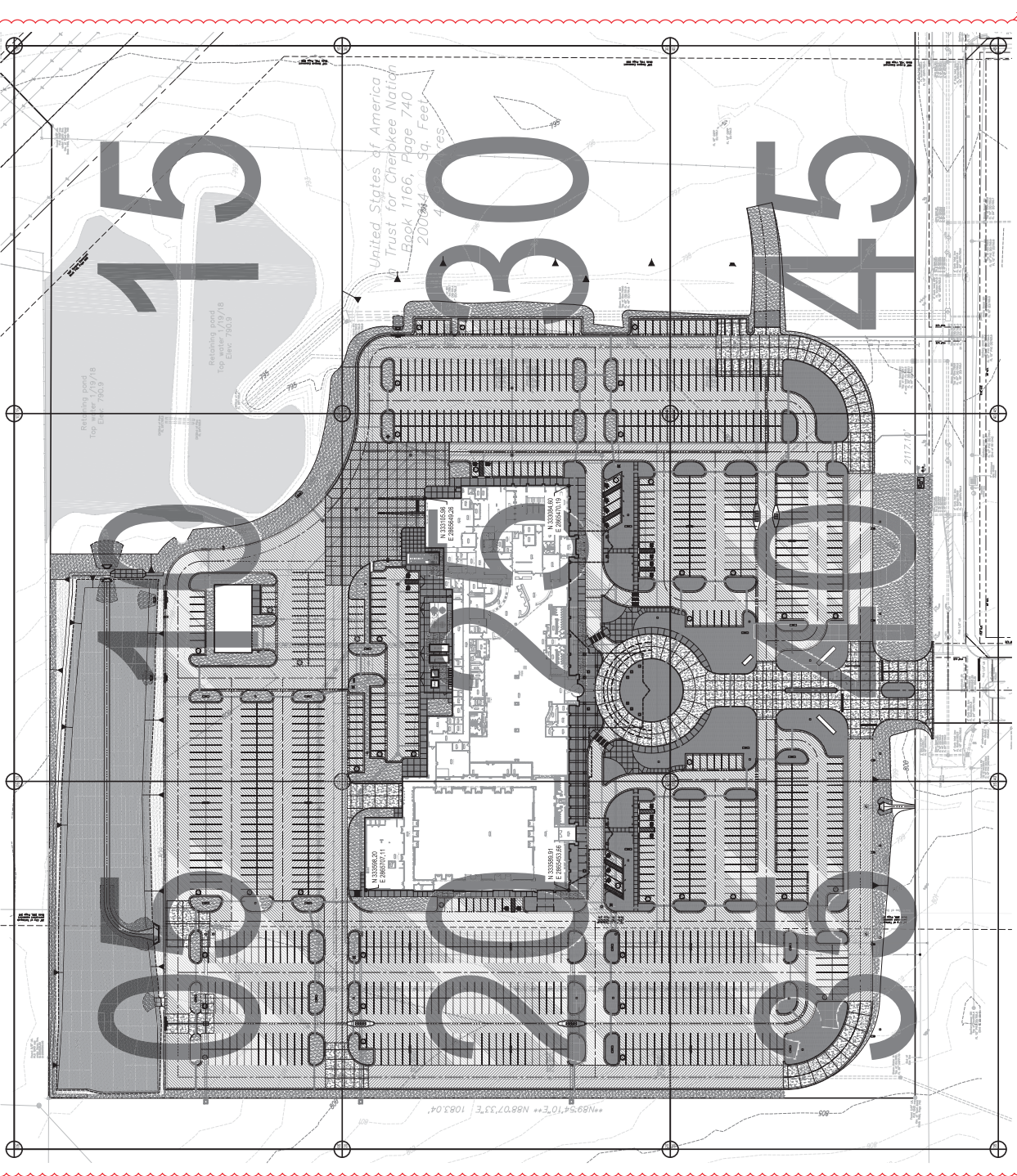
With the attached:

Number	Name	Issue Date
C1.02c	CIVIL SITE PLAN INDEX	July 11, 2018
C1.05c	CIVIL SITE PLAN – AREA 05	July 11, 2018
C1.10c	CIVIL SITE PLAN – AREA 10	July 11, 2018
C1.20c	CIVIL SITE PLAN – AREA 20	July 11, 2018
C1.25c	CIVIL SITE PLAN – AREA 25	July 11, 2018
C1.30c	CIVIL SITE PLAN – AREA 30	July 11, 2018
C1.35c	CIVIL SITE PLAN – AREA 35	July 11, 2018
C1.40c	CIVIL SITE PLAN – AREA 40	July 11, 2018
C1.45c	CIVIL SITE PLAN – AREA 45	July 11, 2018
C2.02b	UTILITY PLAN INDEX	July 11, 2018
C3.02c	EROSION CONTROL PLAN	July 11, 2018
C5.02b	STORM SEWER INDEX	July 11, 2018
C5.10b	STORM SEWER PROFILES	July 11, 2018
C5.15b	STORM SEWER PROFILES	July 11, 2018
C7.02b	WATER INDEX	July 11, 2018
C7.05b	WATER LINE PLAN AND PROFILE – LINE A	July 11, 2018
C8.02c	FINISHED GRADING PLAN – INDEX	July 11, 2018
C8.15c	FINISHED GRADING PLAN – AREA 15	July 11, 2018
C8.30c	FINISHED GRADING PLAN – AREA 30	July 11, 2018
C8.40c	FINISHED GRADING PLAN – AREA 40	July 11, 2018
C8.45c	FINISHED GRADING PLAN – AREA 45	July 11, 2018

END OF ADDENDUM

LEGEND

- PROPOSED PAVING (SEE SECTION 0205.16 AND SECTION 02 22.12 FOR SPECIFICATIONS. ORIGINAL IMPROVEMENTS TO BE MAINTAINED SHALL BE RECONSTRUCTED TO MATCH EXISTING CONDITIONS.)
- PROPOSED CONCRETE PAVING (SEE SECTION 0205.16 AND SECTION 02 22.12 FOR SPECIFICATIONS. ORIGINAL IMPROVEMENTS TO BE MAINTAINED SHALL BE RECONSTRUCTED TO MATCH EXISTING CONDITIONS.)
- PROPOSED ASPHALT PAVING (SEE SECTION 0205.16 AND SECTION 02 22.12 FOR SPECIFICATIONS. ORIGINAL IMPROVEMENTS TO BE MAINTAINED SHALL BE RECONSTRUCTED TO MATCH EXISTING CONDITIONS.)
- PROPOSED GRAVEL PAVING (SEE SECTION 0205.16 AND SECTION 02 22.12 FOR SPECIFICATIONS. ORIGINAL IMPROVEMENTS TO BE MAINTAINED SHALL BE RECONSTRUCTED TO MATCH EXISTING CONDITIONS.)
- PROPOSED SOIL (SEE SECTION 0205.16 AND SECTION 02 22.12 FOR SPECIFICATIONS. ORIGINAL IMPROVEMENTS TO BE MAINTAINED SHALL BE RECONSTRUCTED TO MATCH EXISTING CONDITIONS.)
- PROPOSED LANDSCAPE (SEE LANDSCAPE SHOWINGS AND SPECIFICATIONS FOR PLANTING AND MAINTENANCE.)
- PROPOSED UTILITY (SEE SECTION 0205.16 AND SECTION 02 22.12 FOR SPECIFICATIONS. ORIGINAL IMPROVEMENTS TO BE MAINTAINED SHALL BE RECONSTRUCTED TO MATCH EXISTING CONDITIONS.)



01 PLAN VIEW - INSET
SCALE: AS SHOWN



UTILITY WARNING:
THE UNDERGROUND UTILITIES SHOWN HAVE BEEN LOCATED FROM RECORD DRAWINGS AND FIELD SURVEY. THE SHOWN UTILITIES DO NOT GUARANTEE THAT THE FIELD LOCATIONS BY THE CREATOR. THE SHOWN UTILITIES DO NOT GUARANTEE THAT THE UNDERGROUND UTILITIES SHOWN COMPRISE ALL SUCH UTILITIES OR THE AREA OTHER THAN THE UNDERGROUND UTILITIES SHOWN. THE EXACT LOCATION INDICATED AS THROUGH THE SURFACE IS NOT NEARLY GUARANTEED. THE SHOWN UTILITIES ARE NOT NEARLY GUARANTEED TO BE THE INFORMATION AVAILABLE. THE SHOWN UTILITIES ARE NOT NEARLY GUARANTEED TO BE THE INFORMATION AVAILABLE. THE SHOWN UTILITIES ARE NOT NEARLY GUARANTEED TO BE THE INFORMATION AVAILABLE.

