

CHEROKEE HARD ROCK CASINO 4 CONSTRUCTION SET



CHEROKEE NATION ENTERTAINMENT
CONSTRUCTION SET

Architect
Eberhardt Reed Associates
407 South
Tulsa, Oklahoma 74119
918-544-8807

Interior Architecture
105 Architecture
120 Main
Tulsa, Oklahoma
Suite 400 - 6606
Hartford, 660-247-5226

Structural Engineering
Chevez-Griffin Consulting Engineers, Inc.
3700
Suite 102
Auburn, Oklahoma 74003
918-244-4020

MEP Engineering
M&S Engineering Consultants
375
Suite 100
Lawton, Oklahoma 74003
918-248-1100

Civil Engineering/Surveying
Native Plus Surveying and Mapping /
R&S Engineering & C
2807 South Garrett Road
Tulsa, Oklahoma 74146
918-234-7996

Low Voltage / Theme Lighting
M&S Engineering
60
Suite 200
Bartlesville, Oklahoma 74002
918-365-5092

Food Services
Waters Group LLC
7045
Suite 201 - 74133
Tulsa, Oklahoma 74133
918-635-5208

THIS DOCUMENT IS THE PROPERTY OF ERA AND IS NOT TO BE REPRODUCED OR TRANSMITTED IN ANY FORM OR BY ANY MEANS, ELECTRONIC OR MECHANICAL, WITHOUT THE WRITTEN PERMISSION OF ERA. ANY REUSE OF THIS DOCUMENT WITHOUT THE WRITTEN PERMISSION OF ERA IS STRICTLY PROHIBITED.

INTERIOR ARCHITECTURE
 277 HARRISON STREET
 ASHEVILLE, NC 28801
 PHONE: 828.252.1111
 FAX: 828.252.1112
 WWW.ERA-NC.COM

STRUCTURAL ENGINEERING
 277 HARRISON STREET
 ASHEVILLE, NC 28801
 PHONE: 828.252.1111
 FAX: 828.252.1112
 WWW.ERA-NC.COM

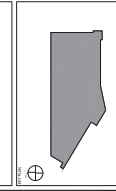
MECHANICAL ENGINEERING
 277 HARRISON STREET
 ASHEVILLE, NC 28801
 PHONE: 828.252.1111
 FAX: 828.252.1112
 WWW.ERA-NC.COM

ELECTRICAL ENGINEERING
 277 HARRISON STREET
 ASHEVILLE, NC 28801
 PHONE: 828.252.1111
 FAX: 828.252.1112
 WWW.ERA-NC.COM

LANDSCAPE ARCHITECTURE
 277 HARRISON STREET
 ASHEVILLE, NC 28801
 PHONE: 828.252.1111
 FAX: 828.252.1112
 WWW.ERA-NC.COM

CONSTRUCTION MANAGEMENT
 277 HARRISON STREET
 ASHEVILLE, NC 28801
 PHONE: 828.252.1111
 FAX: 828.252.1112
 WWW.ERA-NC.COM

CASINO 4



NO.	DESCRIPTION	DATE
1	CONSTRUCTION SET	05/20/2017

GRADING PLAN

CIVIL PACKAGE

DATE: 05/20/2017
 DRAWN BY: J.R.K.
 CHECKED BY: J.R.K.

C-104



- EXISTING**
- EXISTING CURB & GUTTER
 - EXISTING SANITARY SEWER MANHOLE
 - EXISTING PIER
 - EXISTING SPOT ELEVATION
 - EXISTING SPOT ELEVATION TOP OF PAVEMENT
 - EXISTING SPOT ELEVATION TOP OF FINISH FLOOR
 - EXISTING SPOT ELEVATION TOP OF STEWALK
 - EXISTING SPOT ELEVATION AT BUILDING
 - EXISTING SPOT ELEVATION TOP OF GRATE
 - EXISTING SPOT ELEVATION TOP OF RIM & FLOW LINE
- PROPOSED**
- NEW SANITARY SEWER CLEAN OUT
 - NEW SANITARY SEWER
 - NEW MANHOLE
 - NEW CONTOUR
 - NEW CURB & GUTTER
 - NEW CONCRETE CURB & GUTTER
 - NEW CONCRETE STEPS
 - NEW AREA INLET
 - NEW WOOD
 - NEW 1/2" STORM
 - NEW CONCRETE WALL
 - NEW CONCRETE OVERWALK
 - NEW CONCRETE PAVEMENT
 - NEW DECORATIVE ROCK LANDSCAPE (TO BE SHOWN ON LANDSCAPE PLANS BY OTHERS)
 - STAINED CONCRETE SIDEWALK
 - SPOT ELEVATION TOP OF PAVEMENT
 - SPOT ELEVATION TOP OF SEWALK
 - SPOT ELEVATION TOP OF GROUND
 - SPOT ELEVATION BUILDING FINISH FLOOR
 - SPOT ELEVATION TOP OF GRATE
 - SPOT ELEVATION TOP OF WALL & SIDEWALK
 - SPOT ELEVATION TOP OF WALL & PAVEMENT
 - SPOT ELEVATION TOP OF SUB



THIS DOCUMENT IS THE PROPERTY OF ERA CONSULTANTS, INC. AND IS TO BE USED ONLY FOR THE PROJECT AND SITE SPECIFICALLY IDENTIFIED HEREIN. IT IS NOT TO BE REPRODUCED, COPIED, OR TRANSMITTED IN ANY FORM OR BY ANY MEANS, ELECTRONIC OR MECHANICAL, INCLUDING PHOTOCOPYING, RECORDING, OR BY ANY INFORMATION STORAGE AND RETRIEVAL SYSTEM, WITHOUT THE WRITTEN PERMISSION OF ERA CONSULTANTS, INC.

INTERNAL ARCHITECTURE

277 HARRISON STREET
 SUITE 100
 RALEIGH, NC 27601
 919.876.9000

STRUCTURAL ENGINEERING

10015 UNIVERSITY BLVD, SUITE 200
 RALEIGH, NC 27617
 919.876.9000

Mechanical, Electrical, & Plumbing

10015 UNIVERSITY BLVD, SUITE 200
 RALEIGH, NC 27617
 919.876.9000

CIVIL ENGINEERING - SURVEYING

10015 UNIVERSITY BLVD, SUITE 200
 RALEIGH, NC 27617
 919.876.9000

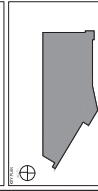
LANDSCAPE ARCHITECTURE

10015 UNIVERSITY BLVD, SUITE 200
 RALEIGH, NC 27617
 919.876.9000

ASAC SERVICES

10015 UNIVERSITY BLVD, SUITE 200
 RALEIGH, NC 27617
 919.876.9000

CASINO 4



NO.	DESCRIPTION	DATE
1	ISSUED FOR PERMITS	05-20-2014
2	AS-BUILT NO. 2	05-20-2014

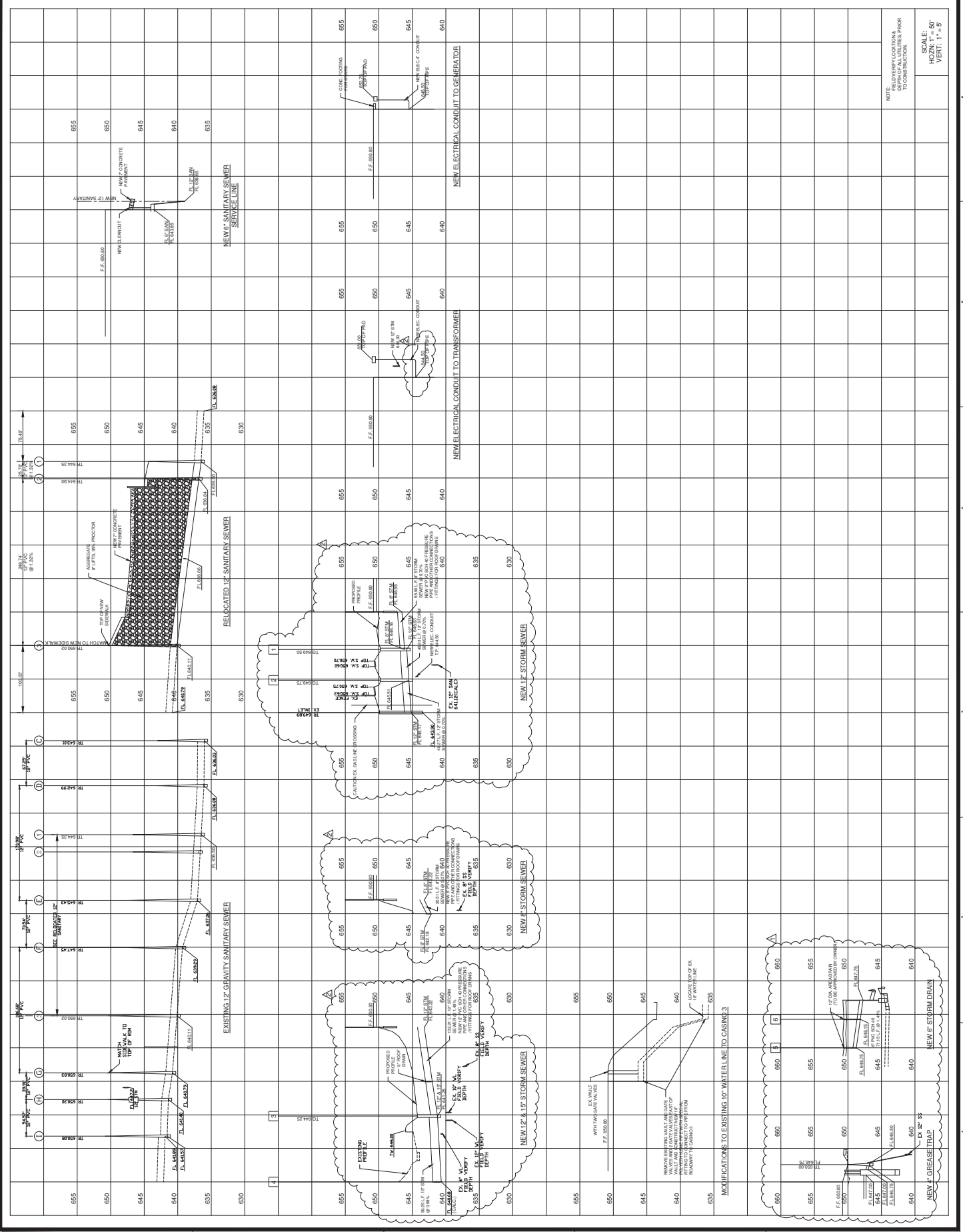
UTILITY PROFILES

CIVIL PACKAGE

DATE: 05/20/14
 DRAWN BY: R.K.
 CHECKED BY: R.K.

C-110

SCALE: HORIZ: 1" = 50'
 VERT: 1" = 5'



NOTE: VERIFY LOCATION OF ALL UTILITIES PRIOR TO CONSTRUCTION.

SCALE: HORIZ: 1" = 50'
 VERT: 1" = 5'

