



EDMONDSON REED & ASSOCIATES

1401 SOUTH DENVER AVENUE, SUITE B
TULSA, OK 74119

Modification Bulletin

Project Name: Cherokee Hard Rock Casino 4
777 W CHEROKEE ST
CATOOSA, OK 74344

Project No:

Modification Bulletin No: 09

To: Flintco, LLC
1624 West 21st Street
Tulsa, OK 74107

Date: 07/16/2018

Description:

This Bulletin contains changes to the requirements of the Bidding Documents, Technical Specifications and Construction Drawings which have been issued to date. Such changes are to be incorporated into the Construction Documents and shall apply to the Work with the same meaning and force as if they had been included in the original documents. Wherever this Bulletin modifies a portion of a paragraph of the Project Manual, or portion of any Drawings, the remainder of the paragraph or Drawing shall remain in force.

CHANGES TO THE DRAWINGS:

- A. Refer to Drawing No. AV401
 - 1. Revised stage equipment.
 - B. Refer to Drawing No. LV112
 - 1. Revised data device layout.
 - C. Refer to Drawing No. LV122
 - 1. Revised data device layout.
-

Attachments:

AV401, LV112 and LV122

Specifications:

None

Issued by: Grace Fabian

cc: Flintco – Matt Croll
Flintco – Lance Lewis
CNE – James Carter
CNE – Mark Watowich
RK & A- Rick Kosman
CG - Nicholas Torres
MSA – Robbie Jones
MSA - Shane Savoy
M/E – Rob Radley
ERA – Doug Huber
ERA – Shannon Henson
ERA – Bryan Broaddrick
JCJ – Grace Fabian

This document and the ideas and designs incorporated herein, as an instrument of professional service, is the property of EDMONDSON REED ASSOCIATES, and is not to be used, in whole or in part, for any other project, without the written authorization of EDMONDSON REED ASSOCIATES.

CONSULTANTS

INTERIOR ARCHITECTURE

JCI Architecture
120 Hayslope Avenue
Suite 400
Hartford, CT 06106
860-247-9226

STRUCTURAL ENGINEERING

Chavez-Greves Consulting Engineers, Inc.
4700 Lincoln Road NE
Suite 102
Albuquerque, NM 87109
505-344-4080

MEP ENGINEERING

M&A Engineering Consultants
370 E. Windmill Ln
Suite 100
Las Vegas, NV 89123
702-896-1100

CIVIL ENGINEERING / SURVEYING

Native Plains Surveying and Mapping / RK & Associates PLC
5807 S. Garnett Rd.
Suite K
Tulsa, OK 74146
918-224-7596

LOW VOLTAGE / THEME LIGHTING

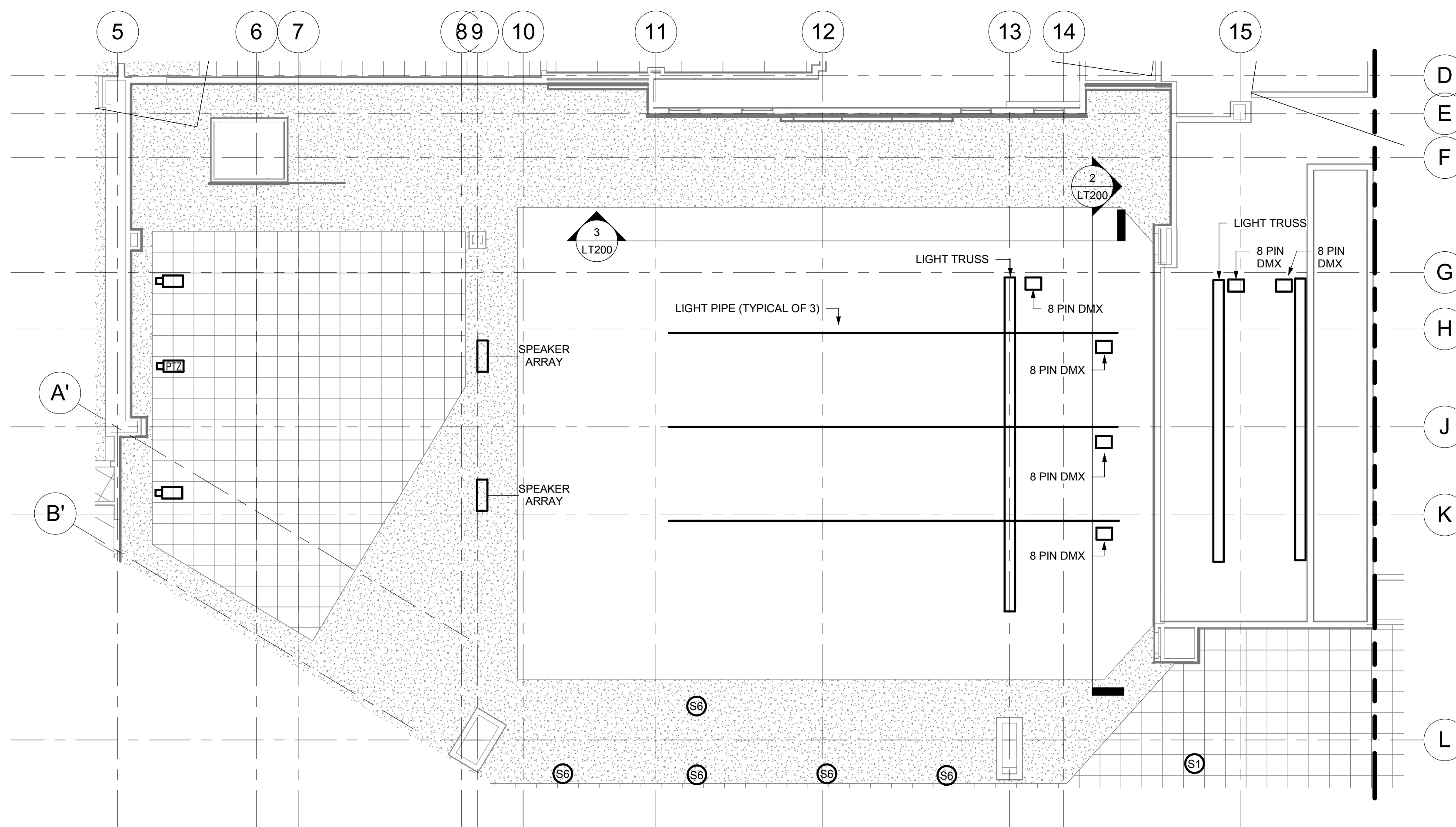
M/E Engineers
60 Lakeland Boulevard
Suite 200
Buffalo, NY 14202
716-845-5092

FOOD SERVICES

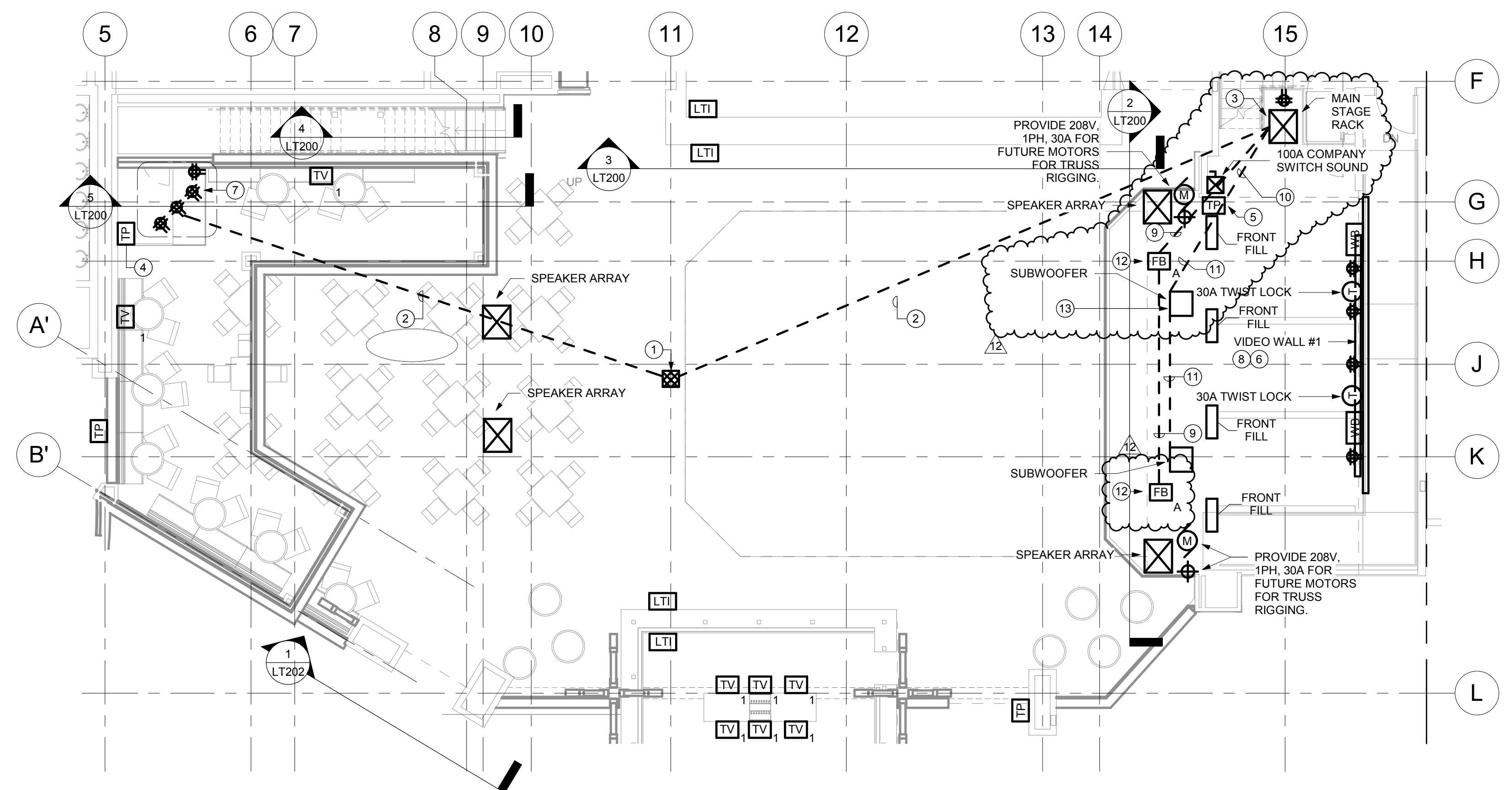
Herman Group, LLC
7645 E. 63rd St.
Suite 201
Tulsa, OK 74133
918-935-5036

AV401 DRAWING NOTES

- HUBBEL CONFERENCE CENTER FLOOR BOX SERIES, IN GRADE FLUSH BOX, (2) QUAD RECEPTACLES REQUIRED.
- (2) 4" CONDUIT BELOW GRADE.
- AV EQUIPMENT TERMINATION RACK.
- TOUCHSCREEN LOCATION FOR BARDANCE FLOOR AREA COORDINATE AV SYSTEM REQUIREMENTS PRIOR TO INSTALLATION. TOUCHSCREEN TO HAVE COMBINED AV AND DANCE FLOOR LIGHTING CONTROL. ALL THEMED COLOR LED LIGHTING WILL BE CONTROLLED FROM AV TOUCH PANEL. REFER TO SPECIFICATIONS.
- TOUCHSCREEN LOCATION FOR STAGE AREA COORDINATE AV SYSTEM REQUIREMENTS PRIOR TO INSTALLATION. TOUCHSCREEN TO HAVE COMBINED AV AND DANCE FLOOR LIGHTING CONTROL. ALL THEMED COLOR LED LIGHTING WILL BE CONTROLLED FROM AV TOUCH PANEL. REFER TO SPECIFICATIONS.
- VIDEO WALL #1. COORDINATE LOCATION WITH ARCHITECTURAL ELEVATIONS.
- PROVIDE DEDICATED 20A CIRCUIT PER QUAD RECEPTACLES AT THIS LOCATION. PROVIDE (2) OVER COUNTER, (2) UNDERCOUNTER QUAD RECEPTACLES.
- PROVIDE (5) 20A CIRCUITS FOR VIDEO WALL. PROVIDE FOUR (4) CAT6 CABLES ROUTED FROM VIDEO WALL LOCATION TO LOCAL IDF.
- (2) 2" CONDUIT FROM STAGE RACK LOCATION TO STAGE FLOOR BOX LOCATIONS.
- (2) 2" RACEWAY FROM STAGE RACK LOCATION TO ABOVE STAGE AREA FOR SPEAKER/LIGHT WIRING.
- (1) 2" CONDUIT FROM STAGE RACK LOCATION TO SUBWOOFER LOCATIONS. COORDINATE VIDEO WALL #1.
- (2) 2" CONDUIT FROM FLOORBOX LOCATIONS TO MAIN STAGE RACK. PROVIDE (8) GANG RECEPTACLE WITH (2) DEDICATED 1P, 20A CIRCUITS, (4) CAT 6 JACKS AND JUMPERS, (3) MICROPHONE JACKS AND JUMPERS. ALL CABLES ROUTE BACK TO MAIN STAGE RACK. QUANTITY OF (2) FLOORBOXES AS SHOWN. PROVIDE LEGRAND AFS SERIES OR APPROVED EQUAL.
- QUANTITY OF (6) SUB WOOFERS TO BE MOUNTED UNDERNEATH STAGE AREA. SUB WOOFER REQUIRES (1) 4" CONDUIT FROM MAIN STAGE RACK TO OPEN AREA ADJACENT TO THE FIRST SUB WOOFER SUCH THAT CABLE CONNECTIONS CAN BE MADE UNDER THE STAGE.

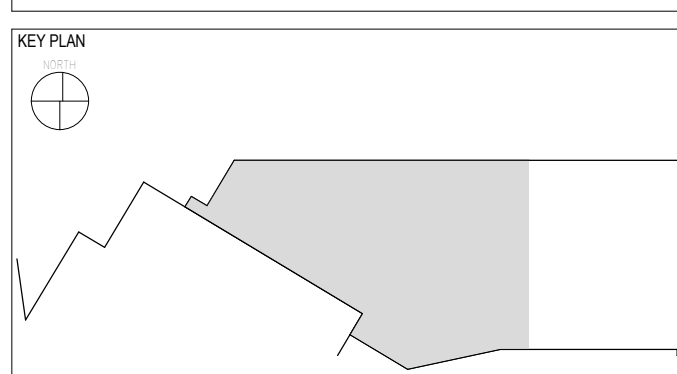


1 REFLECTED CEILING PLAN - ENTERTAINMENT BAR LOUNGE - AV
1/8" = 1'-0"



2 FLOOR PLAN - ENTERTAINMENT BAR LOUNGE - AV
1/8" = 1'-0"

HARD ROCK CASINO



No.	Description	Date
4	BULLETIN 01	06/21/2018
12	BULLETIN 09	07/17/2018

ENTERTAINMENT BAR LOUNGE - PARTIAL FLOOR PLANS - AV

CONSTRUCTION SET

PROJECT NO.	171301
DRAWN BY:	BTH
CHECKED BY:	RJR
ISSUE DATE:	5/17/2018

AV401
Scale AS NOTED

LV112 DRAWING NOTES

- 1 AT THIS LOCATION, PROVIDE ONE (1) 1/2" CONNECTOR AND ONE (1) RG-6 COAX CABLE TO IDF 151.
- 2 DMX INTERFACE LOCATION FOR COLOR CHANGE LINEAR FIXTURE DOWN COLUMN. COORDINATE FINAL MOUNTING LOCATION IN CONJUNCTION WITH LED DRIVER AND OTHER WIRING REQUIREMENTS. COORDINATE FINAL HEIGHT AND LOCATION WITH ARCHITECTURAL ELEVATIONS.
- 3 VIDEO WALL #1. COORDINATE LOCATION WITH ARCHITECTURAL ELEVATIONS. PROVIDE DATA OUTLETS WITH FIFTEEN (8) CAT6 CABLES ROUTED FROM VIDEO WALL LOCATION, TO IDF 151. COORDINATE LOCATION OF DATA OUTLETS WITH OWNERS SITE



This document and the ideas and designs incorporated herein, as an instrument of professional service, is the property of EDMONDSON REED ASSOCIATES, and is not to be used, in whole or in part, for any other project, without the written authorization of EDMONDSON REED ASSOCIATES.

CONSULTANTS

INTERIOR ARCHITECTURE

JCI Architecture
120 Hayslope Avenue
Suite 400
Hartford, CT 06106
860-247-9226

STRUCTURAL ENGINEERING

Chavez-Greves Consulting Engineers, Inc.
4700 Lincoln Road NE
Suite 102
Albuquerque, NM 87109
505-344-4080

MEP ENGINEERING

M&A Engineering Consultants
370 E. Windmill Ln.
Suite 100
Las Vegas, NV 89123
702-896-1100

CIVIL ENGINEERING / SURVEYING

Native Plains Surveying and Mapping / RK & Associates PLC
5807 S. Garnett Rd.
Suite K
Tulsa, OK 74146
918-224-7596

LOW VOLTAGE / THEME LIGHTING

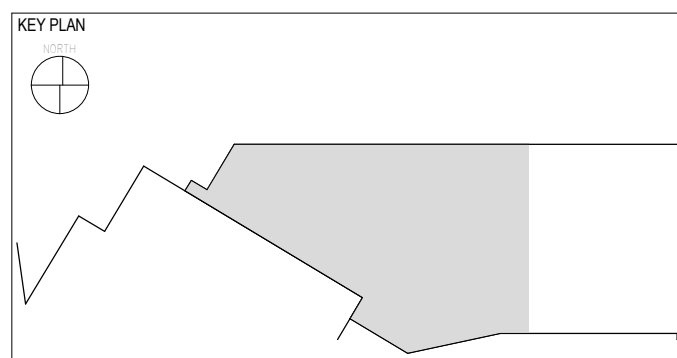
M/E Engineers
60 Lakewood Boulevard
Suite 300
Buffalo, NY 14202
716-845-5092

FOOD SERVICES

Herman Group, LLC
7645 E. 63rd St.
Suite 201
Tulsa, OK 74133
918-935-5036

HARD ROCK CASINO

HARD ROCK CASINO



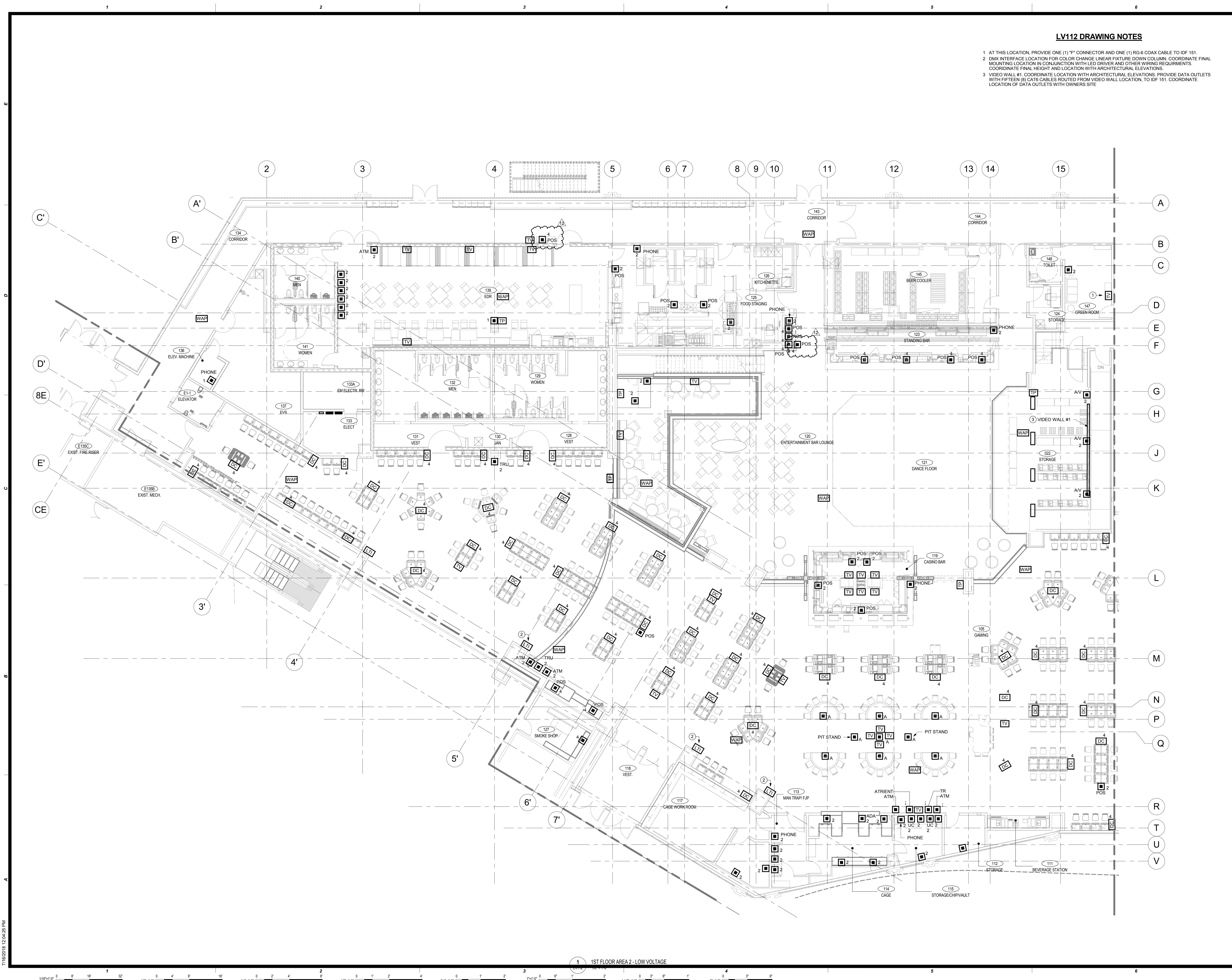
No.	Description	Date
2	ADDENDUM #2	05/04/2018
3	ADDENDUM #4	05/17/2018
4	BULLETIN 01	06/21/2018
12	BULLETIN 09	07/17/2018

1ST FLOOR AREA 2 - LOW VOLTAGE

CONSTRUCTION SET

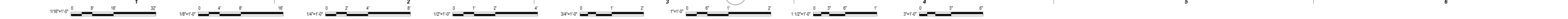
PROJECT NO: 171301
DRAWN BY: BTH
CHECKED BY: RJR
ISSUE DATE: 5/17/2018

LV112
Scale AS NOTED



1 1ST FLOOR AREA 2 - LOW VOLTAGE

7/16/2018 12:04:25 PM



LV122 DRAWING NOTES

- 1 CONTRACTOR SHALL UTILIZE CELL FLOOR FOR ALL CABLES IN THIS AREA SHOWN.
- 2 VIDEO WALL #4 TO BE MOUNTED AROUND COLUMN. COORDINATE LOCATION WITH ARCHITECTURAL ELEVATIONS. PROVIDE DATA OUTLETS WITH TWO (2) CAT6 CABLES ROUTED FROM VIDEO WALL LOCATION, TO IDF E216. COORDINATE LOCATION OF DATA OUTLETS WITH OWNERS SITE



This document and the ideas and designs incorporated herein, as an instrument of professional service, is the property of EDMONDSON REED ASSOCIATES, and is not to be used, in whole or in part, for any other project, without the written authorization of EDMONDSON REED ASSOCIATES.

CONSULTANTS

INTERIOR ARCHITECTURE
JCI Architecture
120 Hayslope Avenue
Suite 400
Hartford, CT 06106
860-247-9226

STRUCTURAL ENGINEERING
Chavez-Greaves Consulting Engineers, Inc.
4700 Lincoln Road NE
Suite 102
Albuquerque, NM 87109
505-344-4080

MEP ENGINEERING
MSA Engineering Consultants
370 E. Windmill Ln.
Suite 100
Las Vegas, NV 89123
702-896-1100

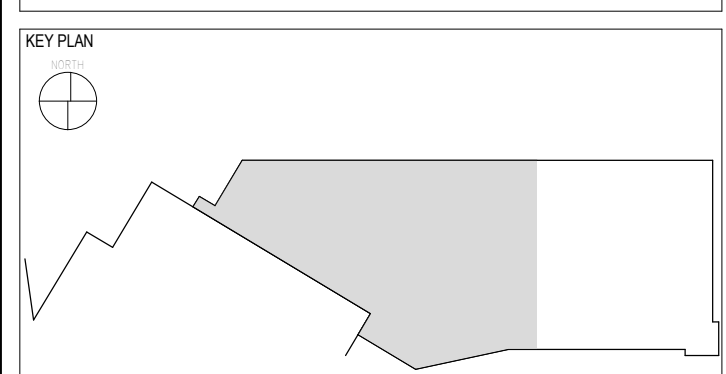
CIVIL ENGINEERING / SURVEYING
Native Plains Surveying and Mapping / RK & Associates PLC
5807 S. Garnett Rd.
Suite K
Tulsa, OK 74146
918-224-7596

LOW VOLTAGE / THEME LIGHTING
M/E Engineers
60 Lakelmont Boulevard
Suite 200
Buffalo, NY 14202
716-845-5092

FOOD SERVICES
Hennigan Group, LLC
7645 E. 63rd St.
Suite 201
Tulsa, OK 74133
918-935-5036

HARD ROCK CASINO

HARD ROCK CASINO



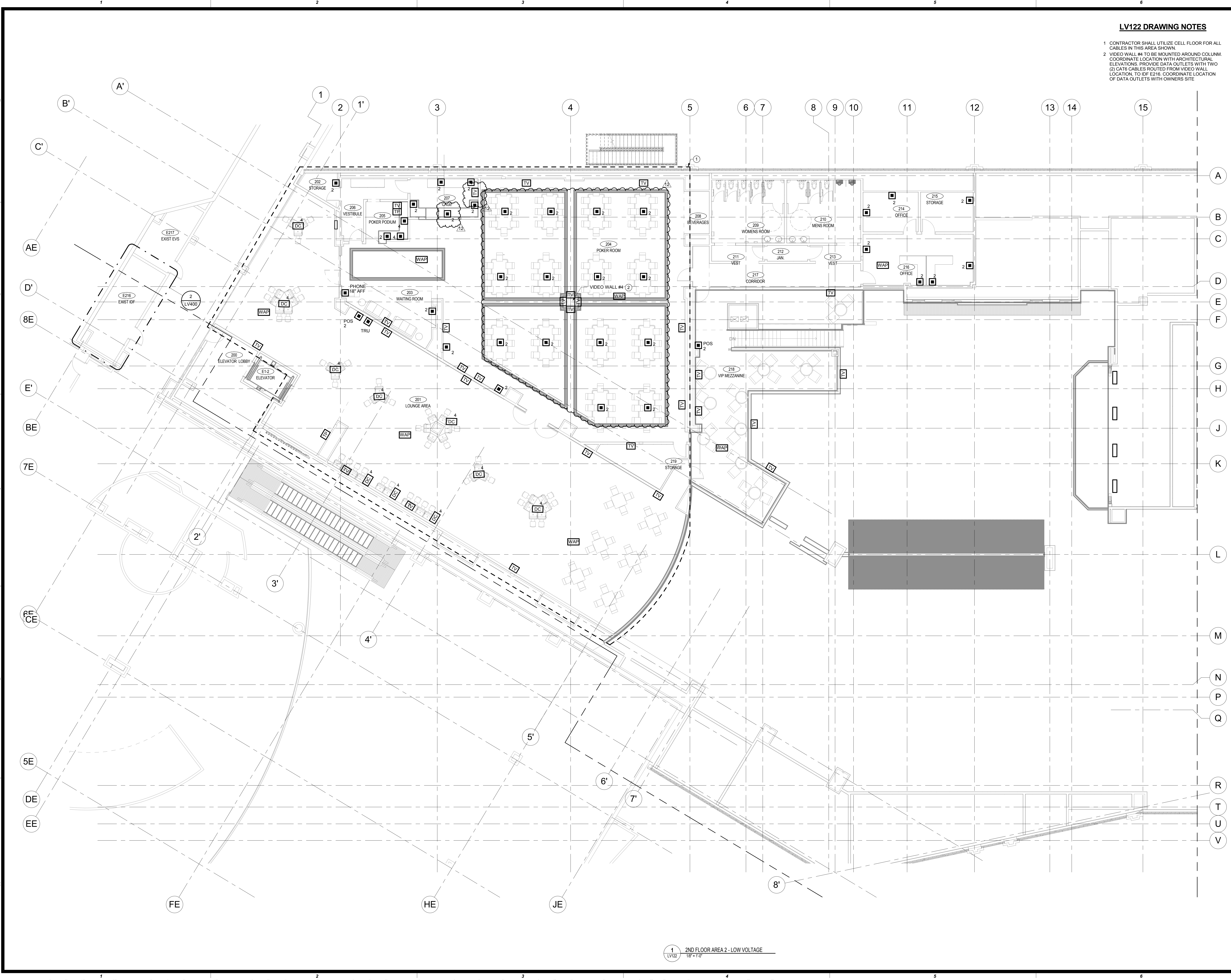
No.	Description	Date
3	ADDENDUM #4	05/17/2018
4	BULLETIN 01	06/21/2018
12	BULLETIN 09	07/17/2018

2ND FLOOR AREA 2 - LOW VOLTAGE

CONSTRUCTION SET

PROJECT NO: 171301
DRAWN BY: BTH
CHECKED BY: RJR
ISSUE DATE: 5/17/2018

LV122
Scale AS NOTED



1 2ND FLOOR AREA 2 - LOW VOLTAGE
LV122

7/16/2018 12:04:28 PM

