

CDI CONTRACTORS, LLC • 3000 CANTRELL ROAD • LITTLE ROCK, ARKANSAS 72202 • 501-666-4300

Legends Resort & Casino

Bid Package 1 – Envelope

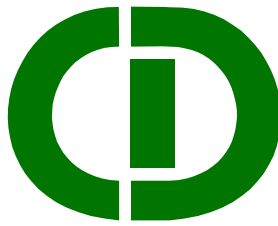
Addendum No. 02

Date: July 7, 2023

Please see below summary of changes included in the updated CDI Supplemental Instructions:

1. Addendum No 02 Narrative w/ RFI Questions & Answers Log & Appendix A & B
2. New Bid Package 01 Contractor Bid Confirmation Form

PLEASE NOTE ALL BIDS AND QUESTIONS SHALL BE SUBMITTED IN ACCORDANCE WITH THE RFP INSTRUCTIONS.



CDI CONTRACTORS, LLC • 3000 CANTRELL ROAD • LITTLE ROCK, ARKANSAS 72202 • 501-666-4300

Legends Resort & Casino

Bid Package 1 – Addendum 02 Narrative

Date: July 7, 2023

Revision Items:

- 01) GFRC Furnish – Furnish all embeds associated with installation of GFRC panels to building and monument signage.
- 02) Exterior Metal Framing & Assemblies – Furnish and install all jamb and header flashing at openings where GFRC panels are located as shown on sheet A-8020; Furnish and install all in-wall blocking and backplates at exterior canopy locations as shown on sheet A-3014.

Questions & Answers:

- 01) [Question] According to the scope sheet, there is a list (page 1 of 10) of documents that comprise the work's bases. Where are the following documents: Work Package 001 – Progress Plans as Prepared by HBG Design date April 4, 2023 (for reference and coordination). Work Package 001 – Progress Project Manual as prepared by HBG Design dated April 4, 2023 (for reference and coordination).
[Answer] Reference the 95% document package issued with Addendum 01.
- 02) [Question] Structural sheet S-0003 has two Components and Cladding Wind Loading Diagrams – the loads are blank in the DD drawings. Would it be possible to get an updated S-0003 sheet with the loads provided?
[Answer] Reference the 95% document package issued with Addendum 01.
- 03) [Question] Each prime contractor will require its superintendent and sub-tier superintendent to provide and use an iPad for BIM360 management on site (for daily use to facilitate drawing review, inspections, work completion, and punch list items, etc.). According to the BIM general conditions, the curtain wall is not listed as a required trade for BIM participation. Please provide clarification on item #11 above and how that pertains to the exterior glazing and unitizing curtain wall scope.
[Answer] Inclusion item 11 and scope of work item 14 in the bid scope sheet relay two separate instructions to bidders. All on-site contractors are required to use BIM360 as instructed and provide BIM coordination as identified on the BIM scope sheet.
- 04) [Question] Unitized curtain wall system includes mullion mounted exterior strip lighting. Contractor required coordination for this work. We will need additional information regarding the mullion mounted exterior strip lighting so we can confirm attachment to the curtain wall. Also, please confirm that the exterior strip lighting will be by others and that curtain wall contractor will only need to coordinate this work. {This includes all embeds and anchorage.} Please confirm if it's CDI's intent to have the curtain wall contractor supply the embeds for the project.
[Answer] This question is with the design team and response is pending. See the product data attached to this Addendum 02 Q/A narrative sheet labeled as "Appendix A" for the proposed exterior hotel tower strip lighting system for your reference. The proposed manufacturer is SACO's V-Stick lighting system that is to be furnished and installed by the electrical/specialty lighting contractor including mounting accessories to

the curtain wall system. Exterior curtain wall contractor's responsibility is to coordinate with CDI Contractors, the electrical contractor, and the lighting manufacturer prior to final submittal approval and start of curtain wall production. Please assume that the curtain wall contractor will need to include incorporation of a seamless strip lighting design within the curtain wall system.

- 05) [Question] Mock-up as specified. Project to build an integrated exterior mock-up to verify selections made under sample submittals and to demonstrate conformance to performance requirements and aesthetic effects, and to set quality standards for fabrication and installation. I do not see a specified mock-up in the drawings. Please confirm mock-up size. Also, please confirm if mock-up shop drawings and calculations will be required. It appears they are only wanting a visual mock-up.
[Answer] Reference specification section 01 40 00-1.7 for mock-up walls for instructions on what to price regarding the mock-up assembly. Additional notes and details regarding final layouts and finishes may be issued during the construction phase if deemed necessary by the owner and design team.
- 06) [Question] Are there any cuts or clarify on the texture and pattern of the GFRC panels beyond the elevation views? The bid form indicates a depth as an option but have not been able to locate the exact texture or depth that is being requested.
[Answer] Reference the 95% drawings and specifications including the profile details on sheet A-4019 and specification section 03 49 00 for fabrication and installation pricing. Fabricator is to assume a high-end texture finish is required. Fabricator is to also provide a high-end pricing option for the panels' depths and profiles.
- 07) [Question] The specifications state only PCI members are qualified to bid the work. Most specs allow both PCI and APA certified manufacturers. There are bidders who are APA certified manufacturers but are not PCI members. Is APA certification approved to bid the work?
[Answer] This question is currently with the design team and pending a response. The qualifications are similar and believe to be acceptable. Please continue with bidding the project and clarify in your bid what your qualifications are. CDI will follow-up later with the design team's response.
- 08) [Question] The 95% documents were issued on 06/07/23 after the issuance of BP1. During the review of the 95% documents, CDI found notes in the signage package that GFRC cladding is required at several outdoor monument-type sign locations such as signs "4", "4b", and "5" that are not indicated on the current architectural or landscape drawings. Please review with the signage consultant and Legends/CNE and verify if GFRC cladding is required at these (3) sign locations. If yes, provide additional details on these assemblies and verify if any other location signage or miscellaneous independent outdoor locations require GFRC cladding.
[Answer] This question is with the design team and response is pending. See the attached documents issued as part of the 95% signage presentation labeled as "Appendix B". CDI has also revised the GFRC fabrication and exterior framing bid scope sheets to include allowances for furnishing and installing GFRC paneling at the three monument sign locations labeled "4", "4b", and "5". See CDI's dimension mark-ups on "Appendix B" for estimating assumptions for the monument signs.
- 09) [Question] Per specification section 084229-2.10, there are two finishes listed for the automatic sliding doors: A) Class 1 Clear Anodized; B) Three-Coat PVDF. Verify which finish is correct.
[Answer] This question is currently with the design team and response is pending. For this bid, provide the more expensive of the two finish options in your base bid and provide a deduct alternate price for moving forward the less expensive finish.
- 10) [Question] Per specification section 084229-1.6, it states that a 20-year warranty is required for the finish of the automatic sliding doors. A maximum finish warranty for anodized finishes is 10-years. Verify the finish warranty duration for automatic sliding doors.
[Answer] This question is currently with the design team and response is pending. For this bid, provide Stanley's typical parts and finish warranties for automatic sliding doors starting on the Date of Substantial

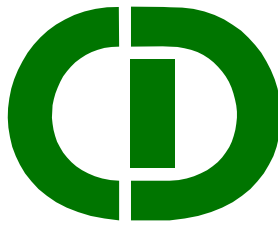
Completion. CDI will qualify this in the overall estimate to the owner and design team and request clarification if additional warranties are required.

11) [Question] Reference details G1/A-5053, A1/A-5054, & other similar details. Sill pan flashing to be by glazing contractor. However, the highlighted metal flashing appears to be part of the GFRC scope. Confirm who is responsible for metal flashing at these details.

[Answer] Glazing contractor is responsible for furnishing and installing all typical sill pan metal. Metal flashing responsibility is per both glazing contractor and GFRC/ACM installer. Situations such as G1/A-5053 and A1/A-5054 require metal flashing from both contractors where assemblies meet. This includes coordination of installation and finishes.

12) [Question] Per specification section 08 80 00, glazing finish GL-4 is noted as frosted spandrel. However, the glazing on N1/A-4010 is listed as GL-3 but noted as having a frosted inner-layer. Provide clarification.

[Answer] CDI will follow-up with the design team on this conflict. For the bid, proceed with providing the more expensive of the two finish options on the base bid and provide a deduct alternate to move forward with the less expensive option if needed.



CDI CONTRACTORS, LLC • 3000 CANTRELL ROAD • LITTLE ROCK, ARKANSAS 72202 • 501-666-4300

Legends Resort & Casino

Bid Package 1 – Bid Confirmation Form

Date: July 7, 2023

All interested contractors to provide the following by July 10, 2023 by 5:00pm (Central):

Company name: _____

Acknowledge bid date and time of July 11, 2023 @ 2:00pm (Central) (Y/N): _____

Contractor to confirm intent to submit a bid (Y/N): _____

Contractor to provide primary contact for bid review (name, email and phone #): _____

Note to bidders 01: You must cut and paste the email address shown on the bid scope sheet to properly submit your bid to CNE.

Note to bidders 02: No late bids will be accepted by CNE.

Note to bidders 03: CNE is considering a OCIP for the project. If CNE does not implement a OCIP, CDI will consider a CCIP for the project. Bidders should be prepared to provide insurance cost breakouts during the bid evaluation process.

Appendix A
{*Ref. ADD02 Narrative RFI #04}
Preliminary Documents are for Reference Only
(*Not Part of 95% Issued Documents Set)

INSTALLATION

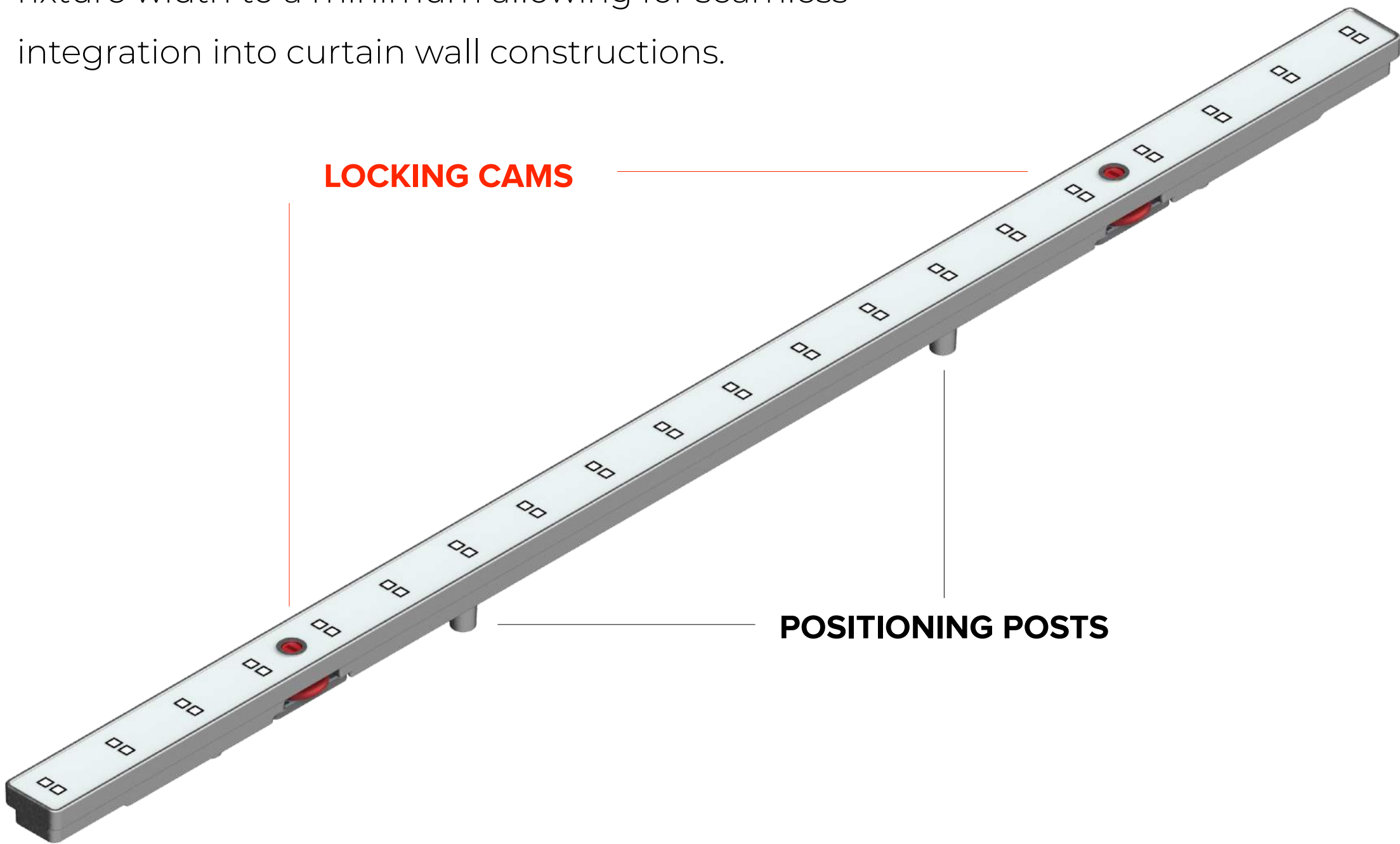
SEAMLESS INTEGRATION

Installation methodology is determined prior to design and production process to allow products to be customized for perfect and seamless integration, as well as to ease installation, adjustment, servicing and maintenance. SACO's project and installation management teams coordinate and supervise on-site the development of the installation stage taking care of correct implementation of QC/QA and Health & Safety plans.

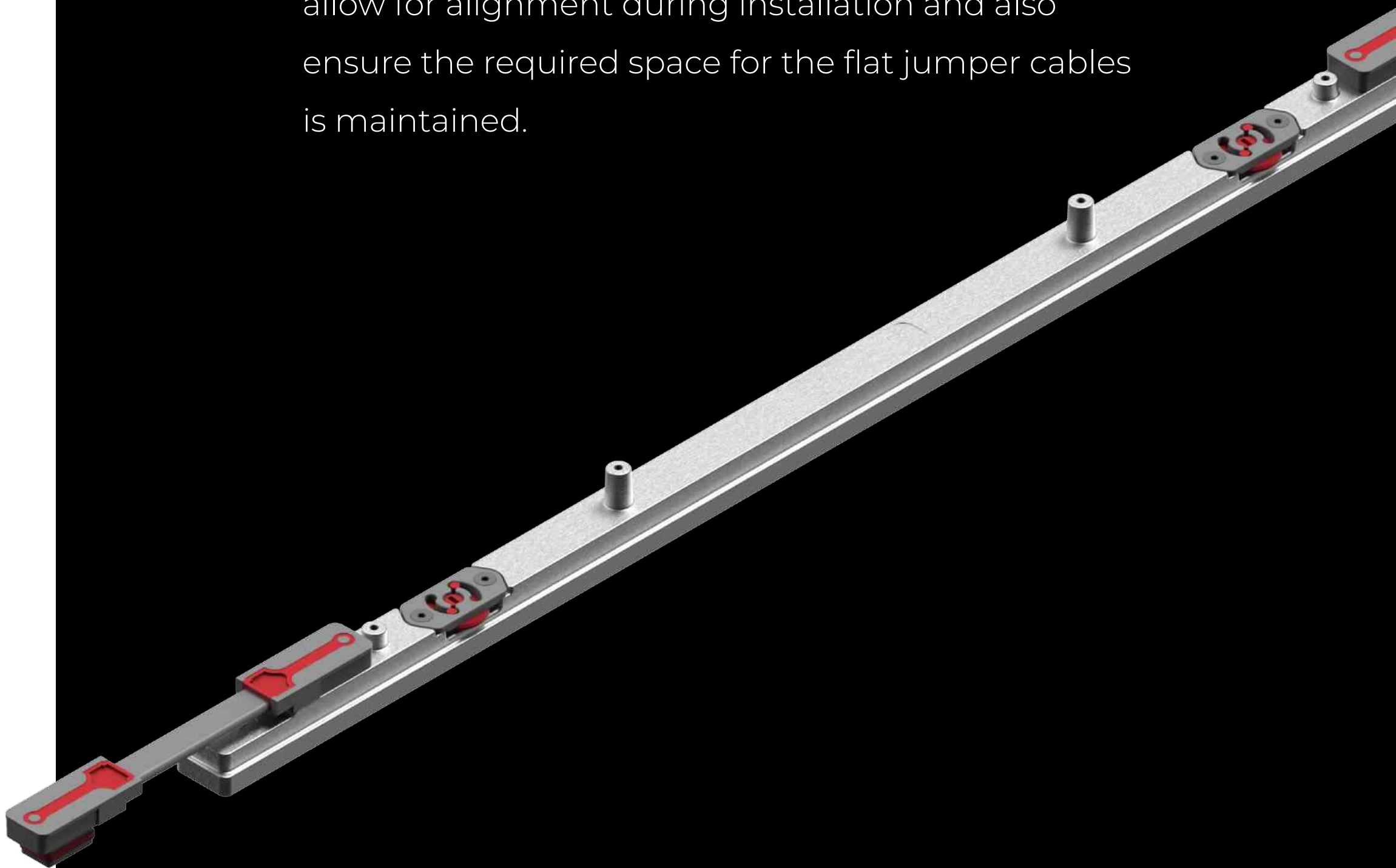


V-STICK

Integral locking cams allow for front fixing of the SACO V-STICK into secondary extrusions or carriers, keeping fixture width to a minimum allowing for seamless integration into curtain wall constructions.

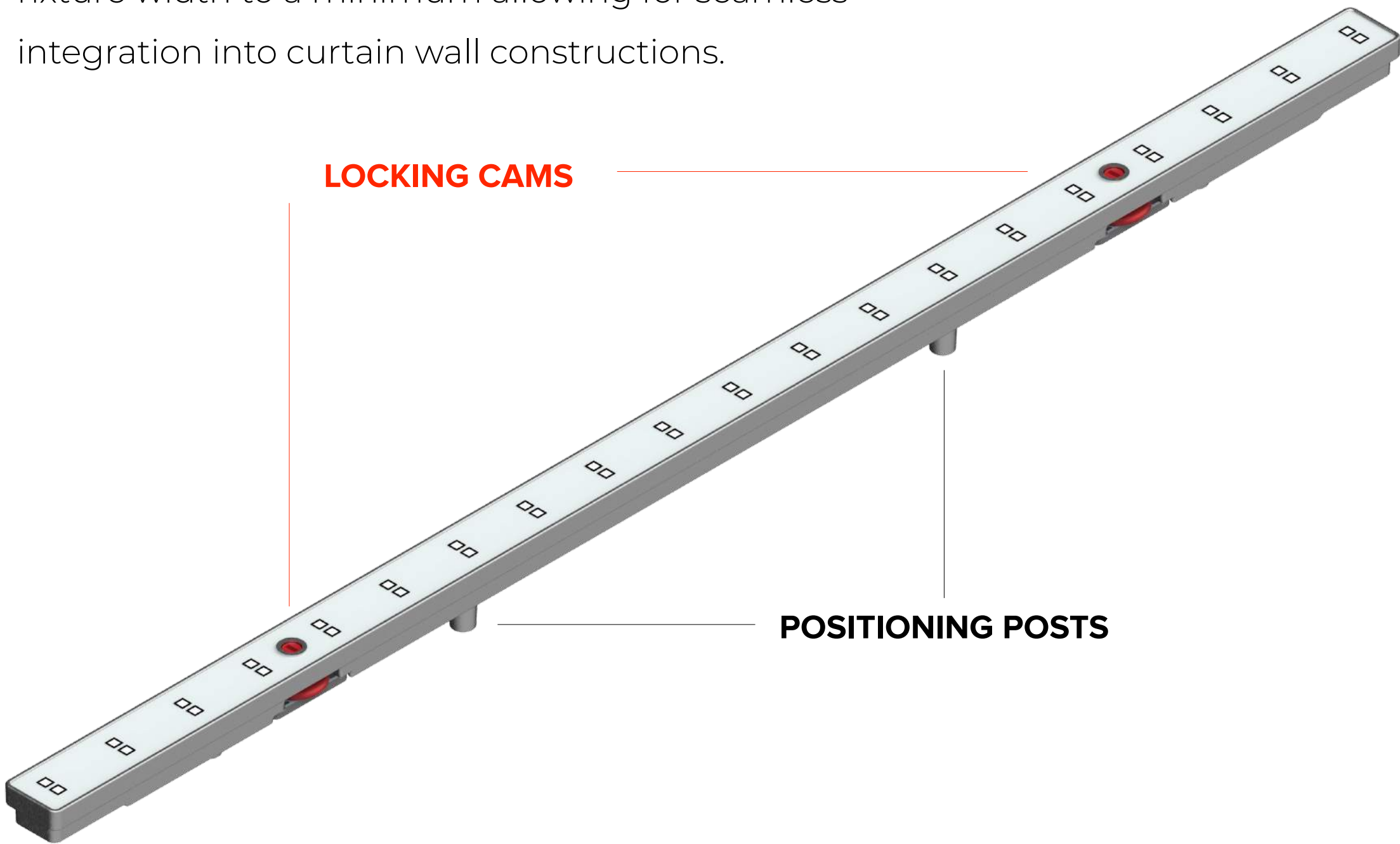


At the rear of the V-STICK are positioning posts that allow for alignment during installation and also ensure the required space for the flat jumper cables is maintained.

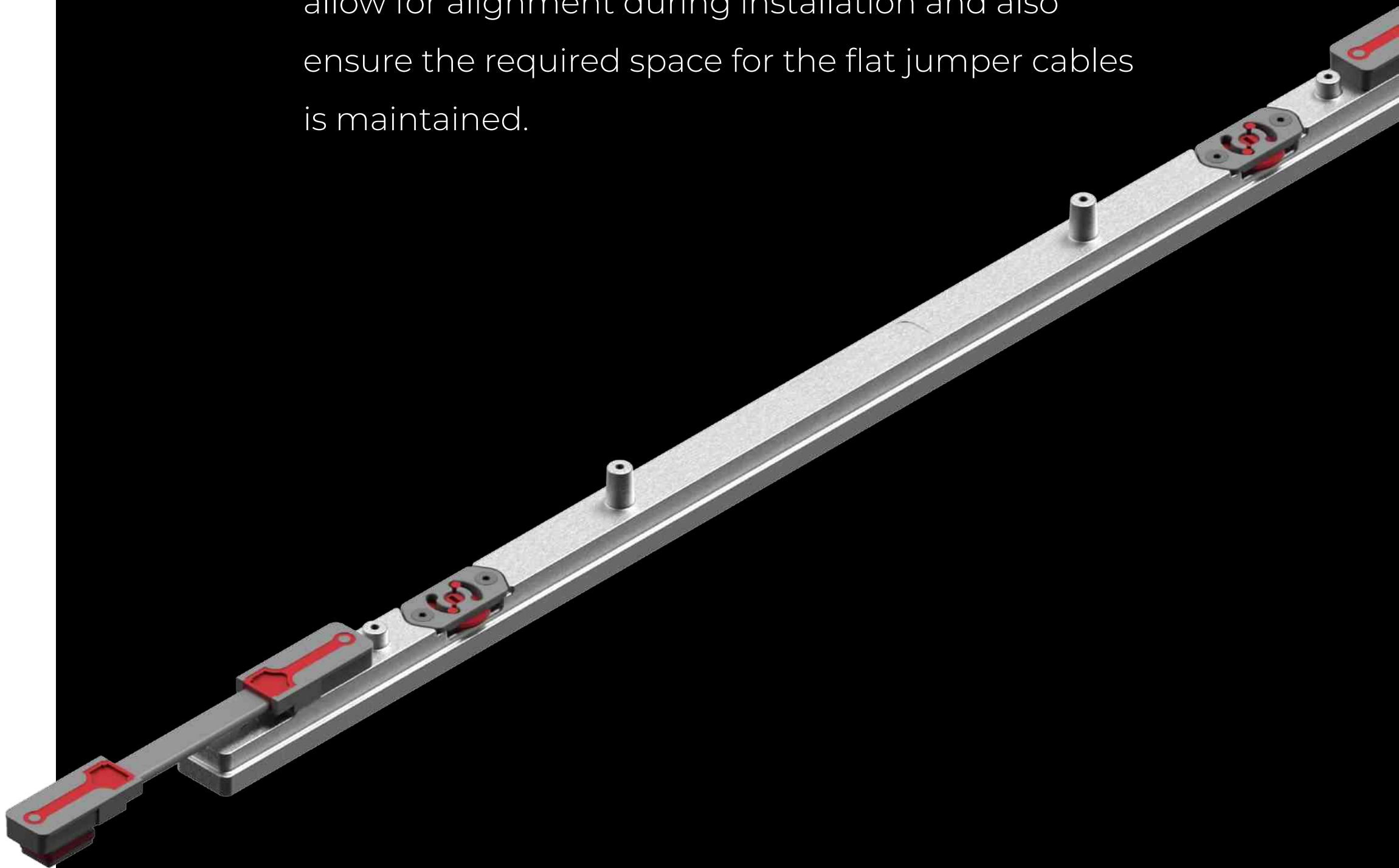


V-STICK

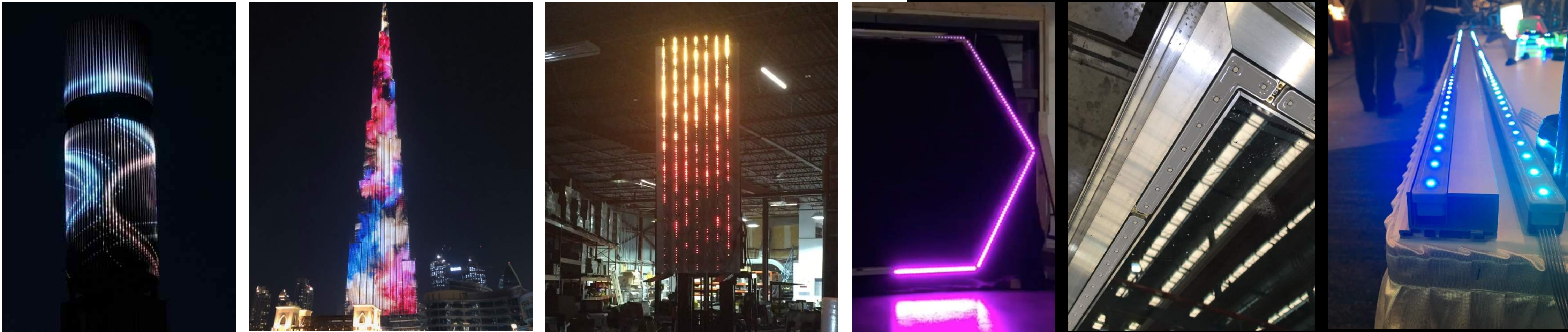
Integral locking cams allow for front fixing of the SACO V-STICK into secondary extrusions or carriers, keeping fixture width to a minimum allowing for seamless integration into curtain wall constructions.



At the rear of the V-STICK are positioning posts that allow for alignment during installation and also ensure the required space for the flat jumper cables is maintained.



V-STICK



Example Secondary Carrier



V STICK Engaged into Carrier

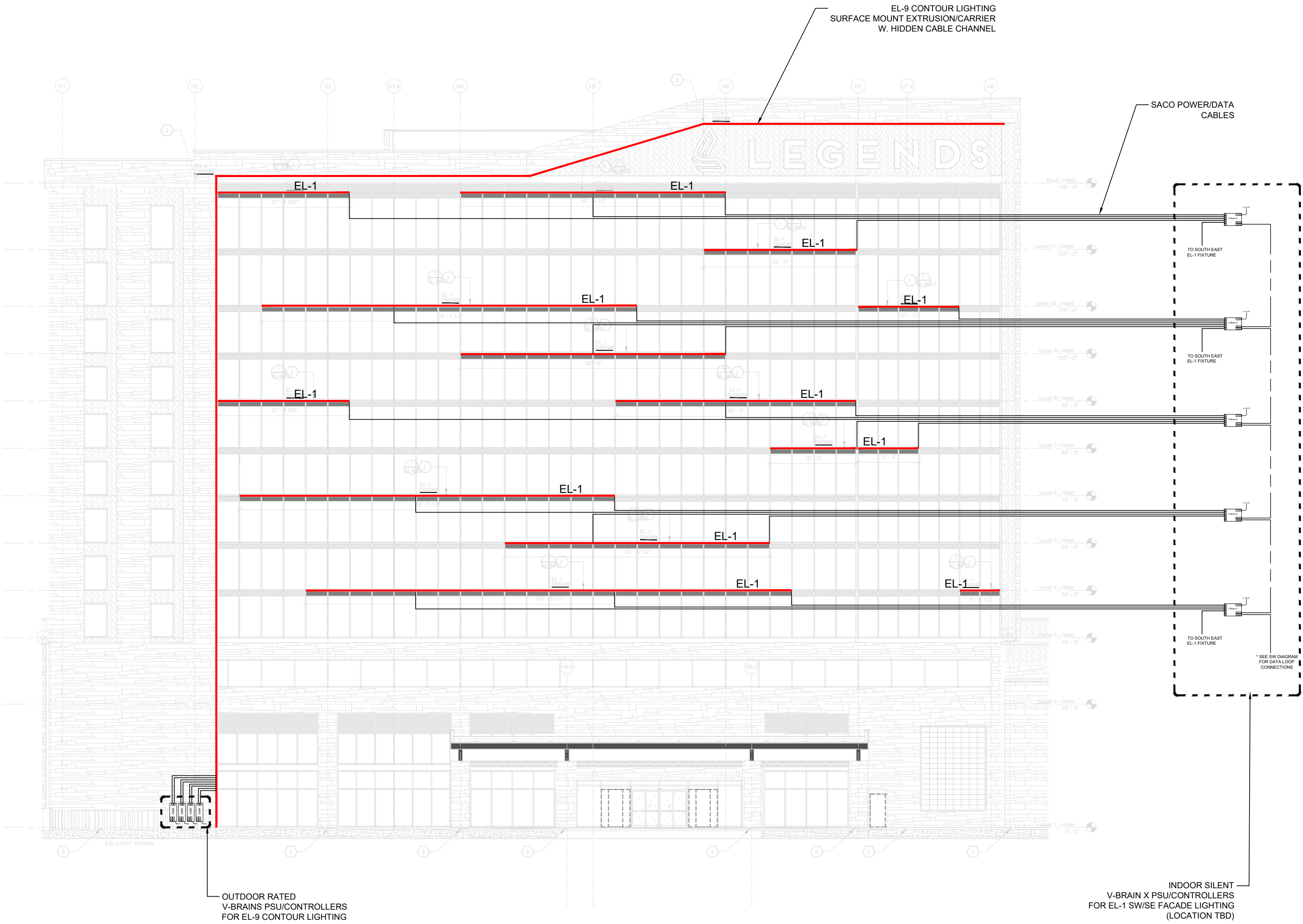


Jumper cables between fittings integral to assembly

V-STICK



LEGENDS CASINO // OVERVIEW OF RUNS



A3 SPECIALTY LIGHTING PLAN - HOTEL TOWER - SOUTH WEST ELEVATION

Notes

Legend

2

05/18/2023

Lightboxes addon

1

04/21/2023

Preliminary proposal

Rev

Date

Description

Client

Lead Consultant

Engineering

MEP and Civil Infrastructure

Art screen

SACO

SACO TECHNOLOGIES INC.

600 West Colfax Avenue

Denver, CO 80202

1001 N. 10TH AVE.

SUITE 1000

DENVER, CO 80202

Project

S0191 -AR LEGENDS CASINO

Drawing code and title

HOTEL TOWER

EL-1/EL-9 LAYOUT

SOUTHWEST

Design BL	Drawn BL	Check RG	Approv. NA
Scale A3	Status	Rev.	
	FOR INFORMATION	02	

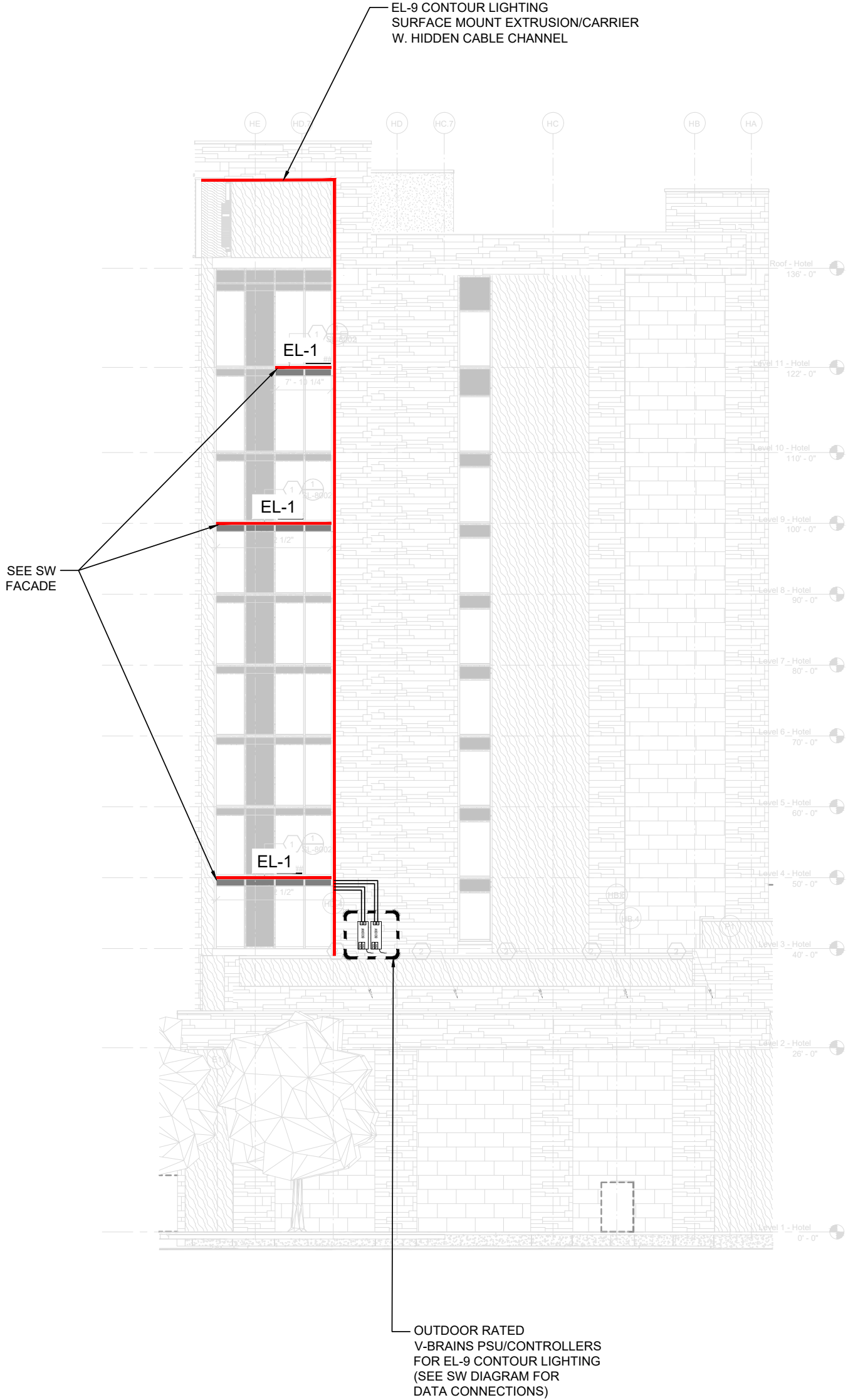
Last saved by

BLASALA

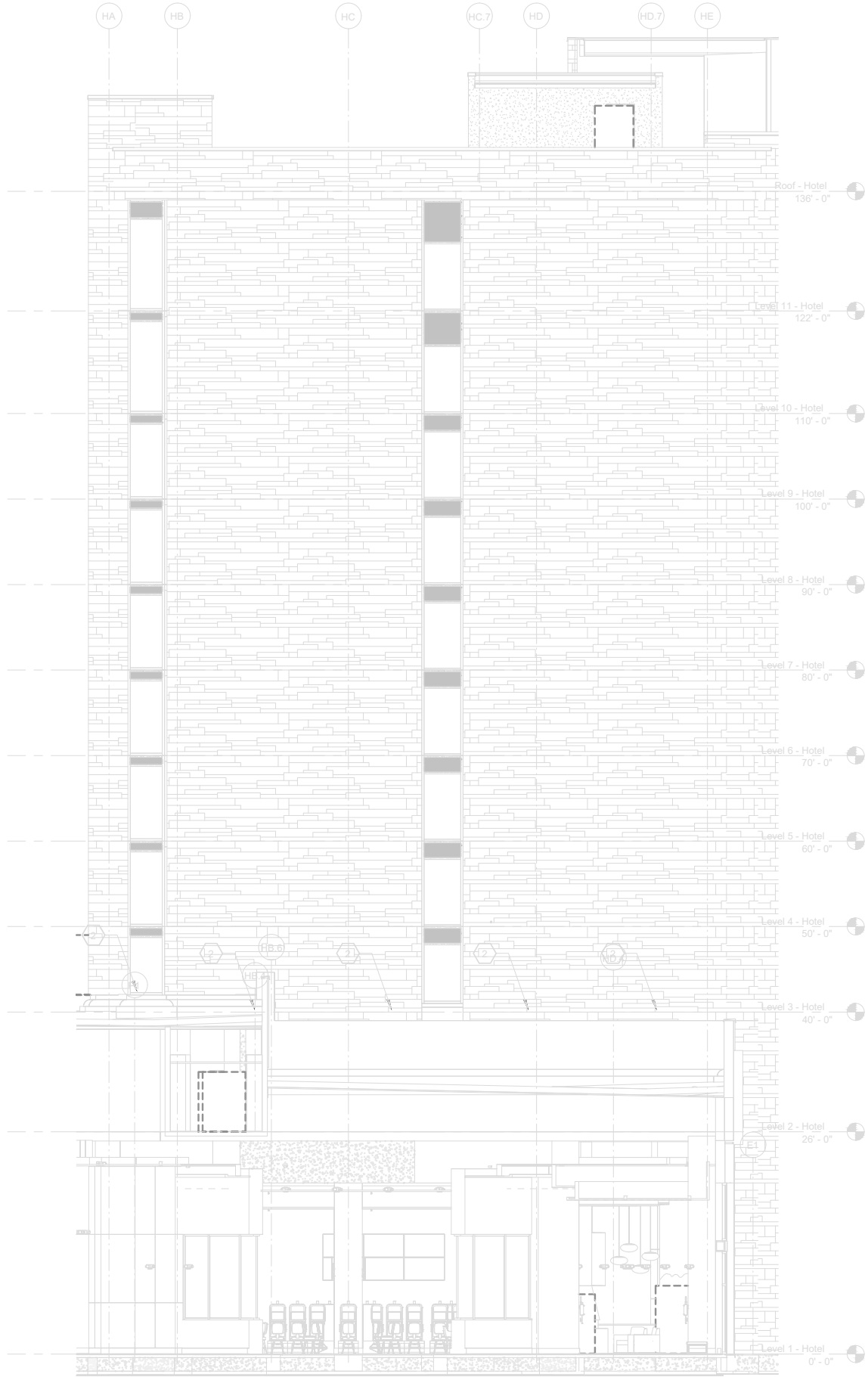
File Name

20230518_LEGENDS CASINO_ELEVATIONS_REV02.DWG

LEGENDS CASINO // OVERVIEW OF RUNS



A12 SPECIALTY LIGHTING PLAN - HOTEL TOWER - SOUTH EAST ELEVATION



A4 SPECIALTY LIGHTING PLAN - HOTEL TOWER - NORTH WEST ELEVATION

Notes

Legend

<

LEGENDS CASINO // LIGHTBOXES



Notes

Legend

2	05/18/2023	Lightboxes addon
1	04/21/2023	Preliminary proposal
Rev	Date	Description
Client		

Lead Consultant

Engineering

MEP and Civil Infrastructure

Art screen



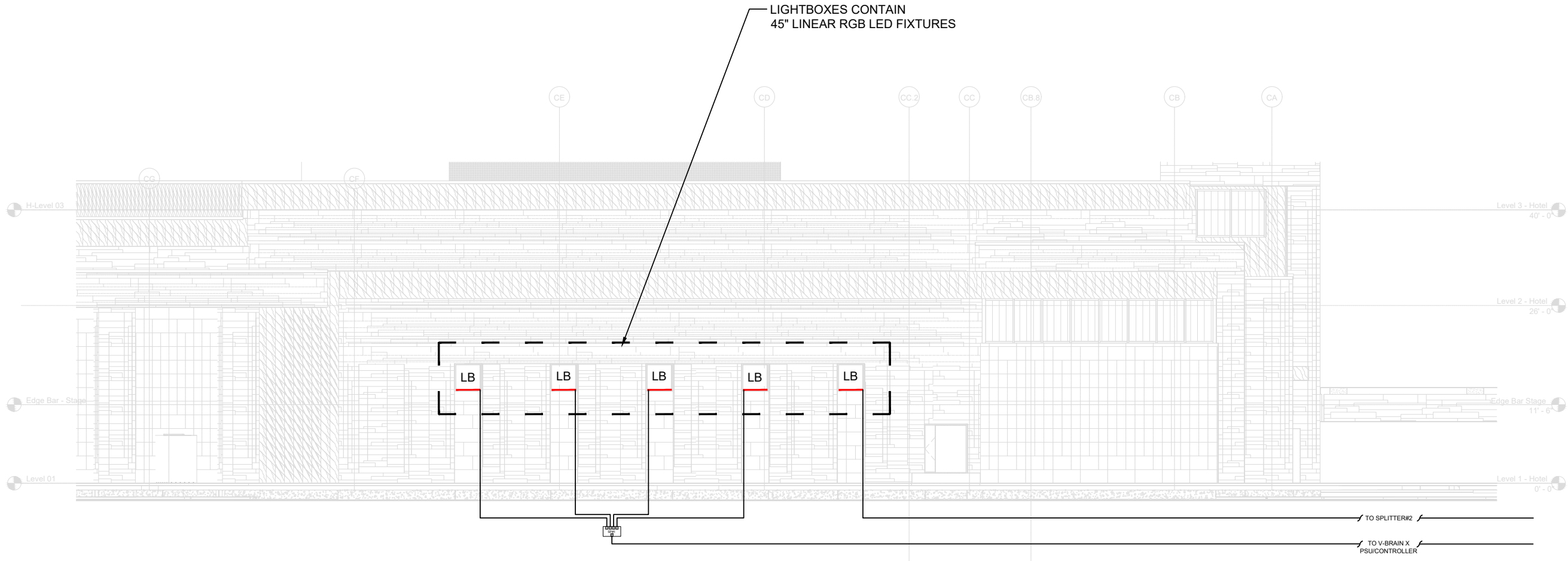
Project
S0191 -AR LEGENDS CASINO
Drawing code and title
CASINO
LIGHTBOXES LAYOUT
SOUTH

Design BL	Drawn BL	Check RG	Approv. NA
Scale A3	Status FOR INFORMATION	Rev. 02	

Last saved by
BLASALA

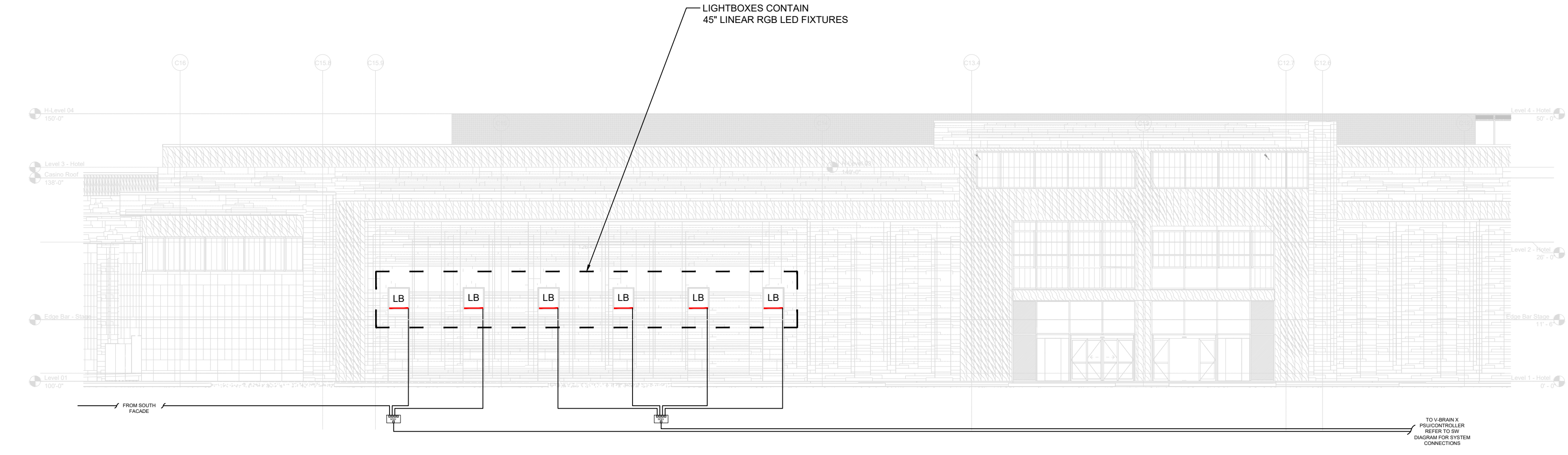
File Name

20230518_LEGENDS
CASINO_ELEVATIONS_REV02.DWG

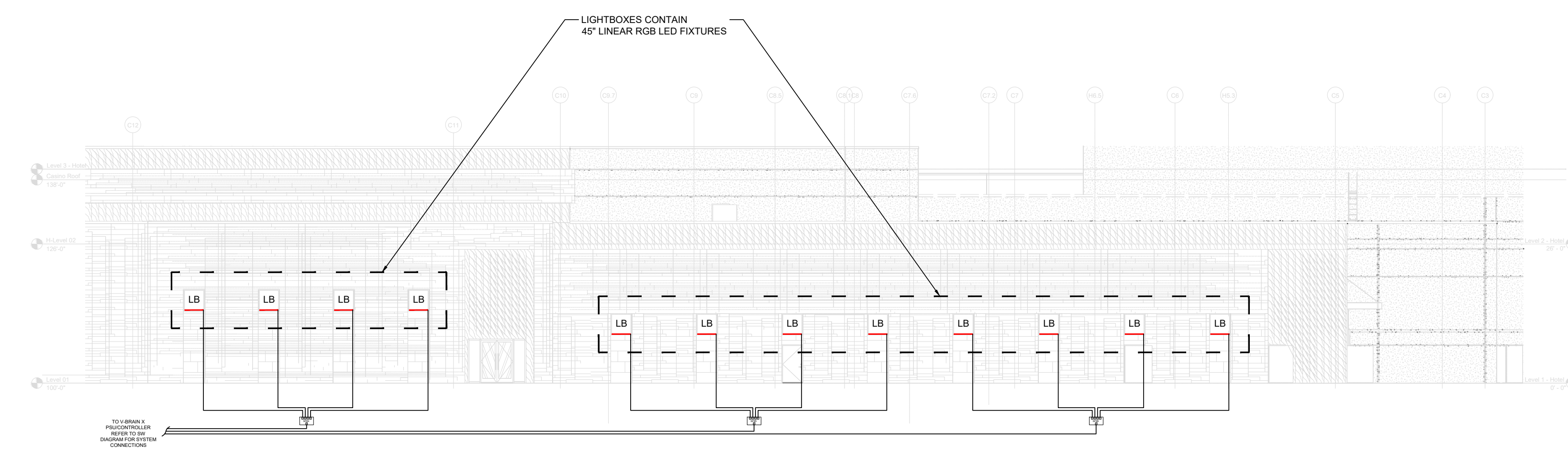


A2 SPECIALTY LIGHTING PLAN - CASINO - SOUTH ELEVATION

LEGENDS CASINO // LIGHTBOXES



A1 SPECIALTY LIGHTING PLAN - CASINO - EAST ELEVATION - PART A



A1 SPECIALTY LIGHTING PLAN - CASINO - EAST ELEVATION - PART B

Notes

Legend

2	05/18/2023	Lightboxes addon
1	04/21/2023	Preliminary proposal
Rev	Date	Description
Client		

Lead Consultant

Engineering

MEP and Civil Infrastructure

Art screen



Project
S0191 -AR LEGENDS CASINO

Drawing code and title
CASINO
LIGHTBOXES LAYOUT
EAST

Design	Drawn	Check	Approv.
BL	BL	RG	NA
Scale A3	Status	Rev.	
	FOR INFORMATION	02	

Last saved by
BLASALA





File Name

20230518_LEGENDS
CASINO_ELEVATIONS_REV02.DWG







EL-1 Horizontal segments			
EL-1 extrusion linear meters	203.3397	* same length as vstick, a complete extrusion on top of façade might be necessary for cbale management	
EL-1 DC linear meters	202.6		
V Stick 500	383		
V Stick 300	37		
Jumper cables	395		
Lead Cable	25	* indoor cable type	
Starter Cable	25		
V-Brain X	5	* assumes lead cables can feed two floors, path TBD	
EL-9 Contour lighting			
EL-9 contour continuous meters	132.237	* complete light path, extrusion with chamber for cabling	
EL-9 DC linear meters	132.2		
V Stick 500	262		
V Stick 300	4		
Jumper cables	254		
Lead Cable	12	* some custom jumpers might be necessary * outdoor cable type	
Starter Cable	12		
V-Brain 600W	6		
Lightboxes (V-LINE OPTION)			
Lightboxes (48"x48") units	23	* 3 per light box	
Lightbox linear meters	25.7048		
V LINE 300	69		
Jumper cables	46		
Splitter 4:1	6		
Lead Cable (V-Brain-Splitter)	6		
Lead Cable (splitter-starter)	23		
Starter Cable	23		
V-Brain X	1		
Control			
Nano processor	1		
Fiber receivers	4		

COLORS AND MATERIALS

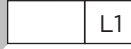
Appendix B
See Signage Presentation Issued w/ 95%
Document Set for Reference.
(*Mark-Ups in Appendix B are for Reference
Only in Budgeting GFRC Allowances)

-  P5 SHERWIN-WILLIAMS SW6992, Satin Finish
-  P6 SILVER - Matthews Paint Acrylic Polyurethane - to match Alucobond Silver Metallic
-  P7 WHITE - Matthews Paint Acrylic Polyurethane - MP03549 'Turnberry White', Satin Finish
-  P8 BLACK - Matthews Paint Acrylic Polyurethane - MP59647 'Black is Back', Satin Finish

MATERIAL:

-  M1 CAST CONCRETE - GFRC Paneling
-  M2 STONE - Pnagaea Natural Stone, Inc. New England Quarry LedgeStone
-  M3 WOOD - CFIS Woodgrain/ 6" simulated plank w/ V Groove - Cedar Texture
-  M4 ALUMINUM - Painted
-  M5 ACRYLIC - Milky White Acrylic
-  M6 ACRYLIC - Clear Acrylic with lightly frosted front face

LIGHTING:

-  L1 WHITE LED for Internally lit channel letters or push-thru letters - Coordinate with project lighting designer for proper color temerature:

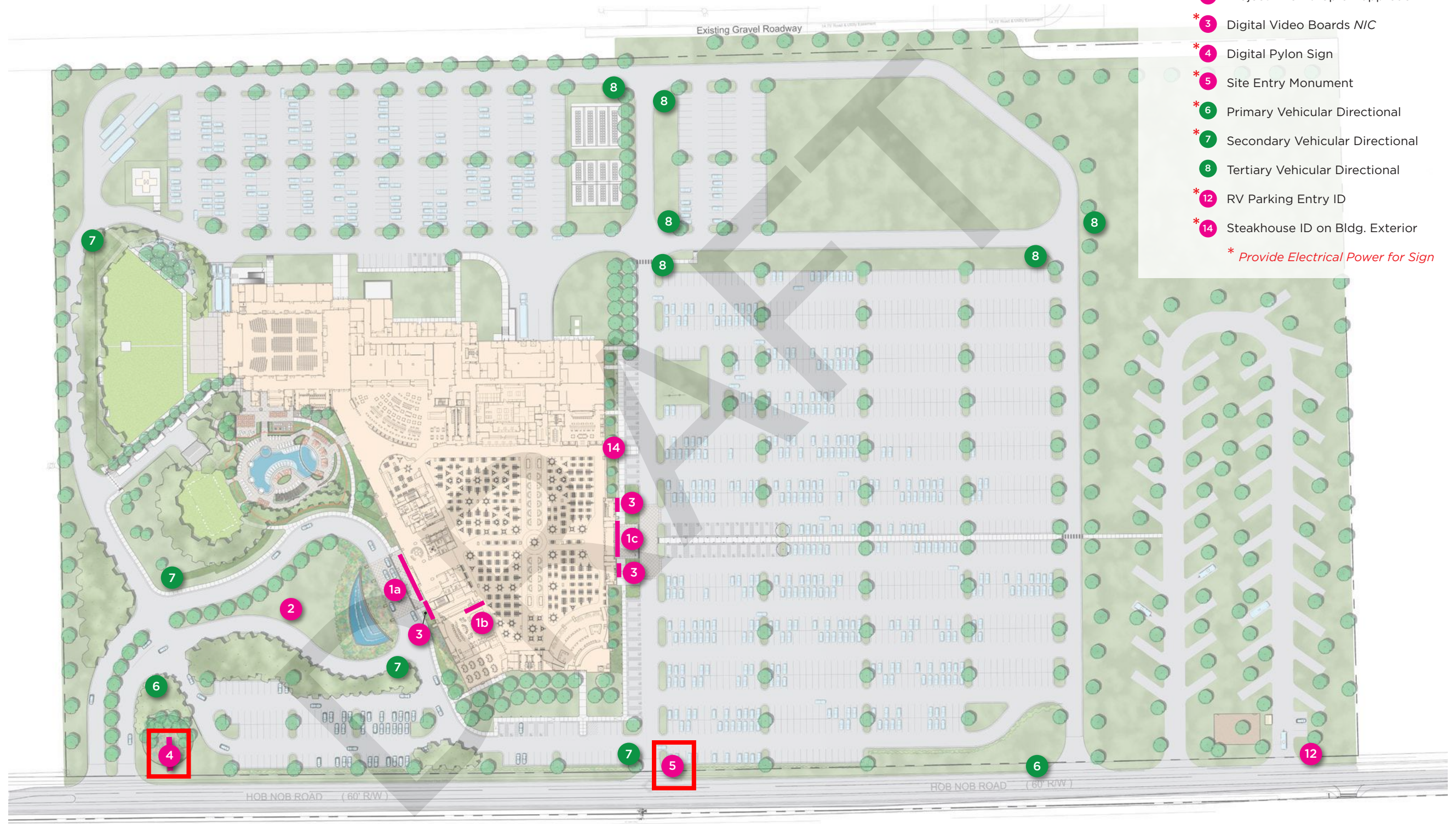
NOTE:
Fabricator required to submit finish and material samples for approval prior to fabrication. Shop drawings with required construction details must be submitted for approval prior to fabrication.

LOGO & TYPE

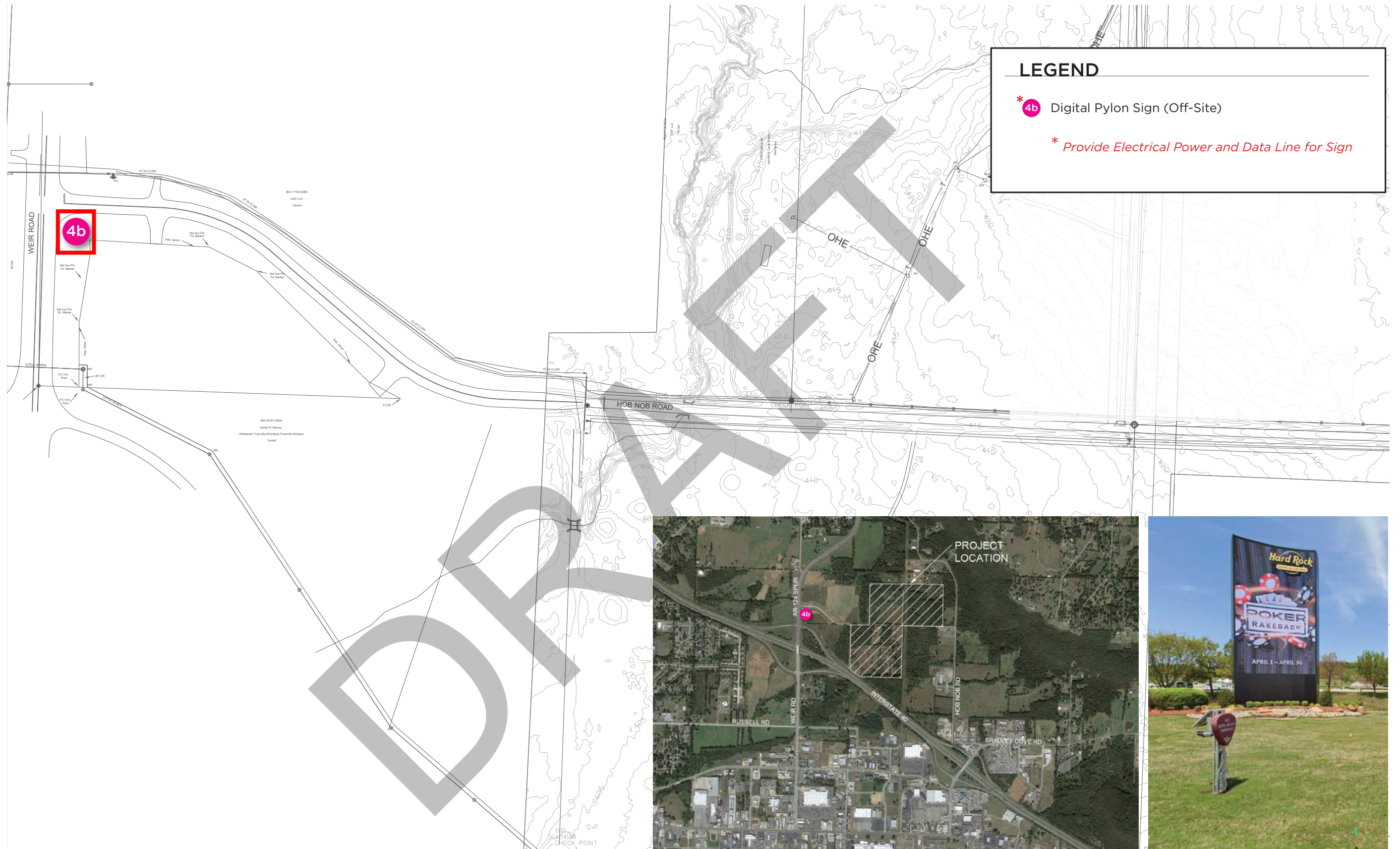


LEGEND

- * 1a * 1b Project ID atop Hotel Tower
- * 1c Project ID @ Casino Entry
- * 2 Project ID on drop off approach
- * 3 Digital Video Boards N/C
- * 4 Digital Pylon Sign
- * 5 Site Entry Monument
- * 6 Primary Vehicular Directional
- * 7 Secondary Vehicular Directional
- * 8 Tertiary Vehicular Directional
- * 12 RV Parking Entry ID
- * 14 Steakhouse ID on Bldg. Exterior
- * Provide Electrical Power for Sign

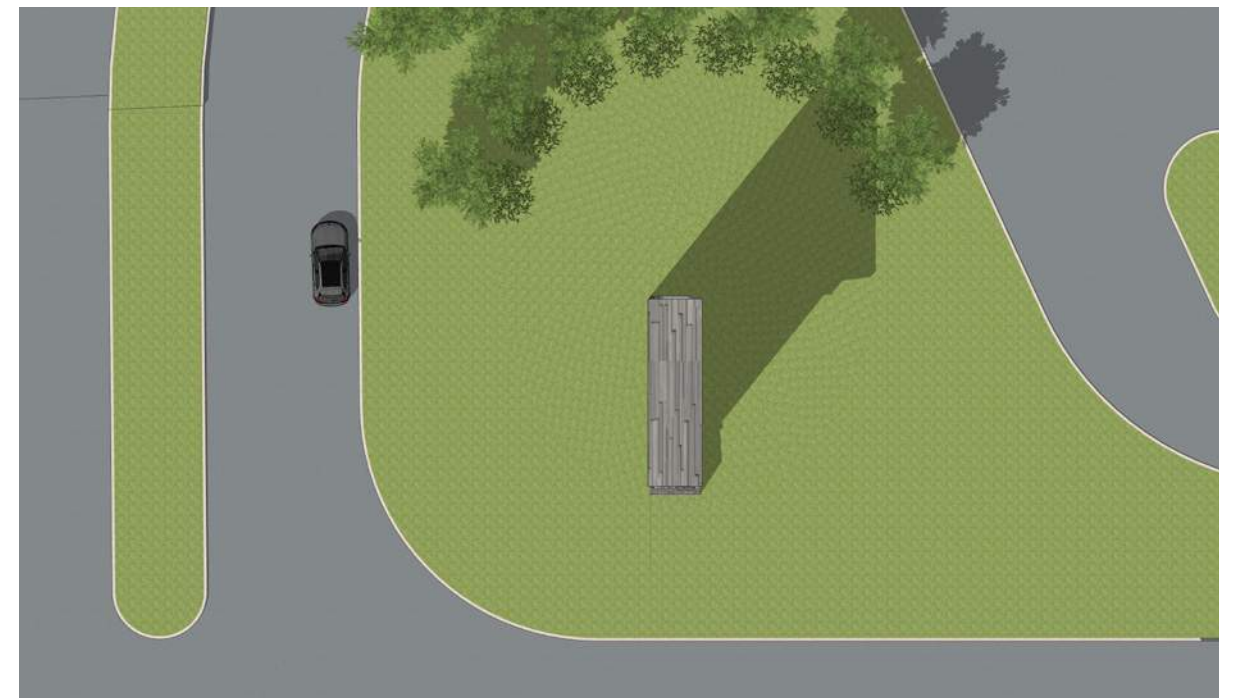


SITE AND EXTERIOR SIGNAGE LOCATION PLAN



OFF SITE PROJECT ID DIGITAL PYLON SIGN

REFERENCE PHOTO



4 MAIN ENTRY PYLON 2 sided, 10mm display



1 ELEVATION, ST 4 - DIGITAL PYLON ID
scale: 1/8"=1'-0"





1 ELEVATION, ST 4 - DIGITAL PYLON ID
scale: 1/4"=1'-0"

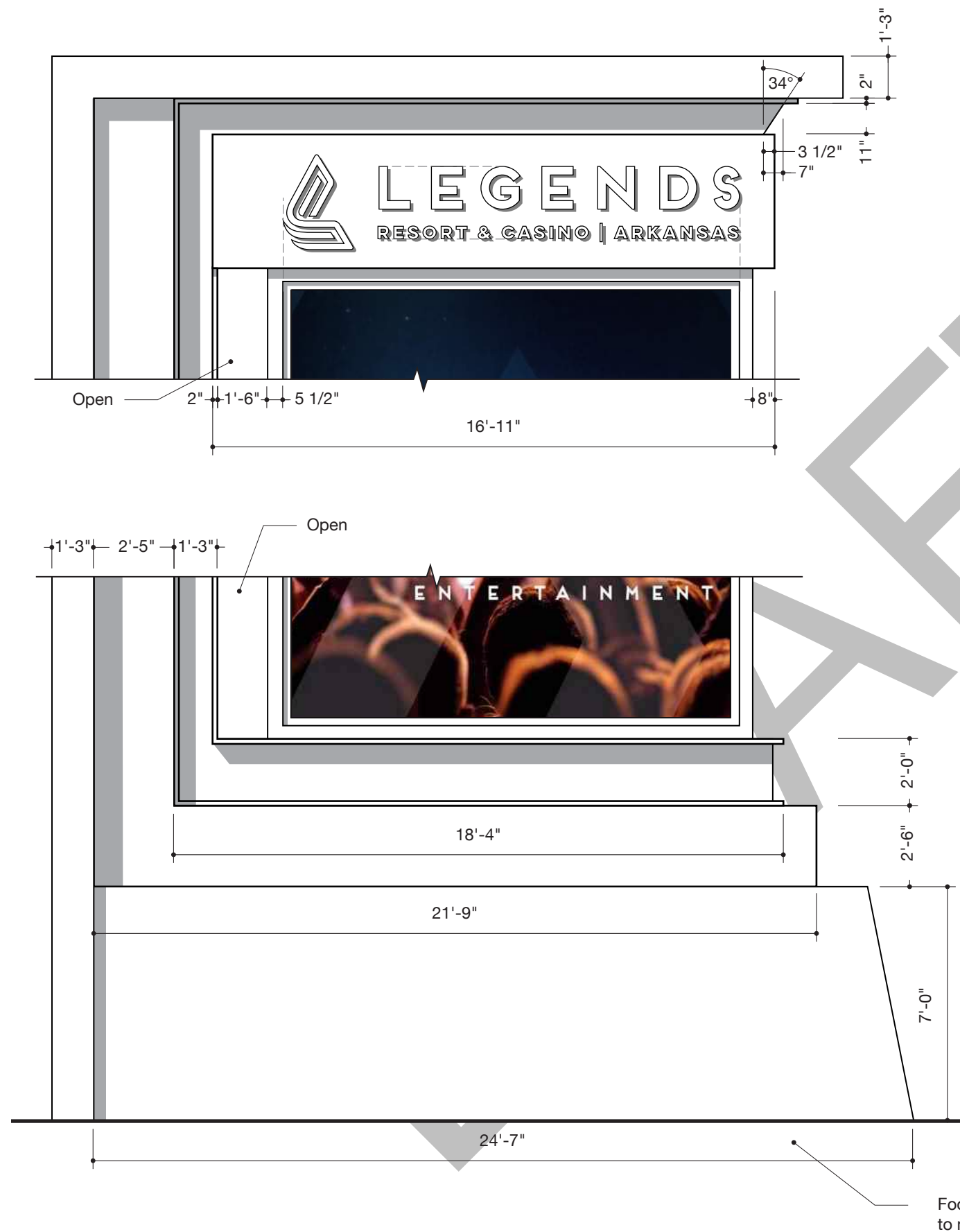


Brand at top of sign
dependent on marketing input

3 DETAIL RENDERING
scale: NTS



2 DETAIL RENDERING
scale: NTS

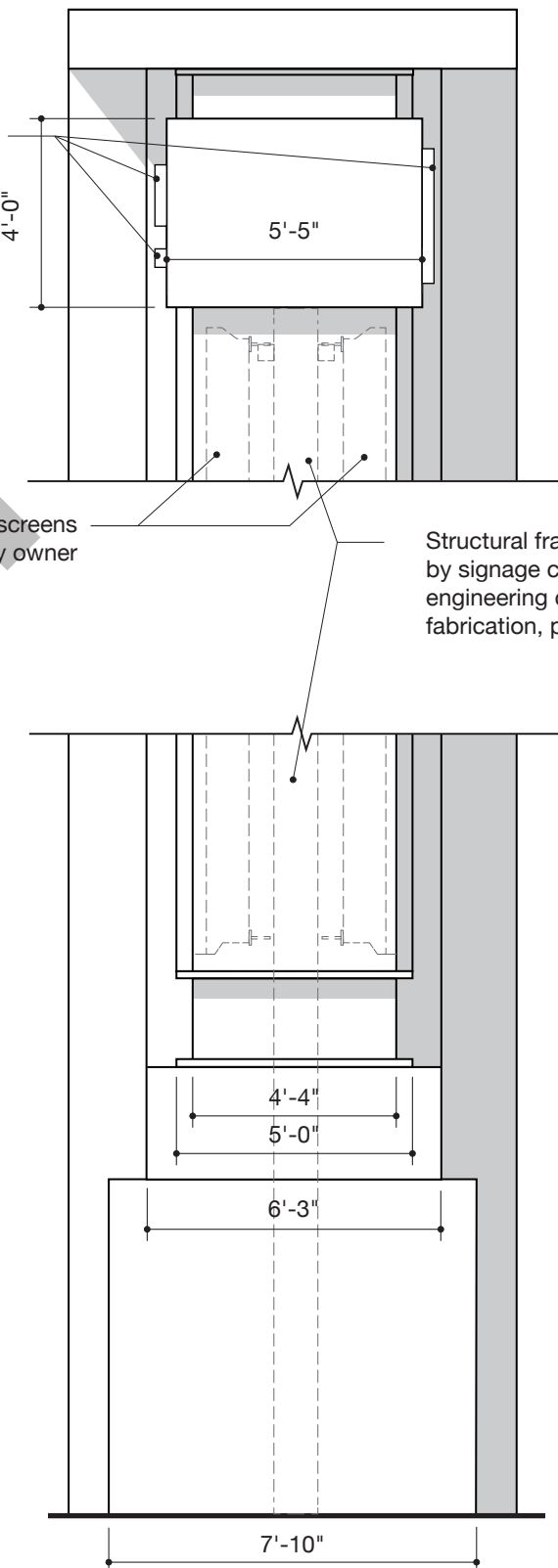


1 DETAIL ELEVATION, ST 4 - DIGITAL PYLON ID: WEST FACE
scale: 1/4"=1'-0"

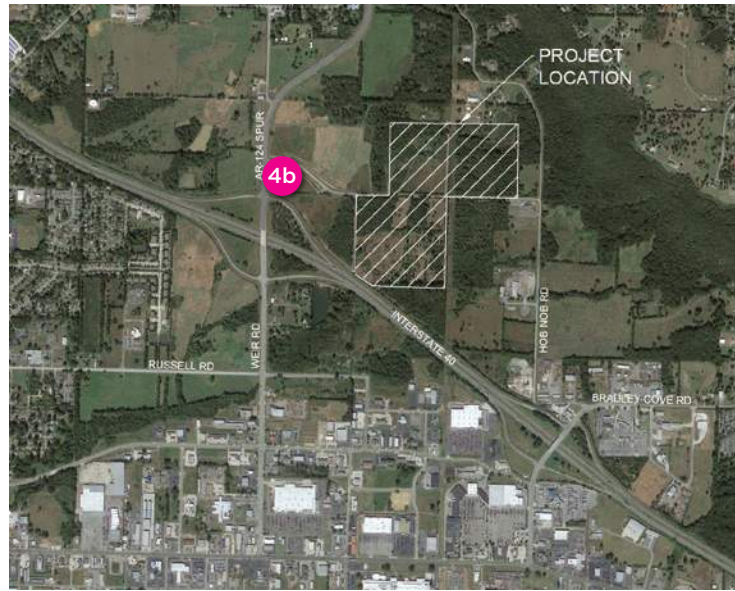
3" deep internally lit
channel letters

Daktronics digital screens
supplied by owner

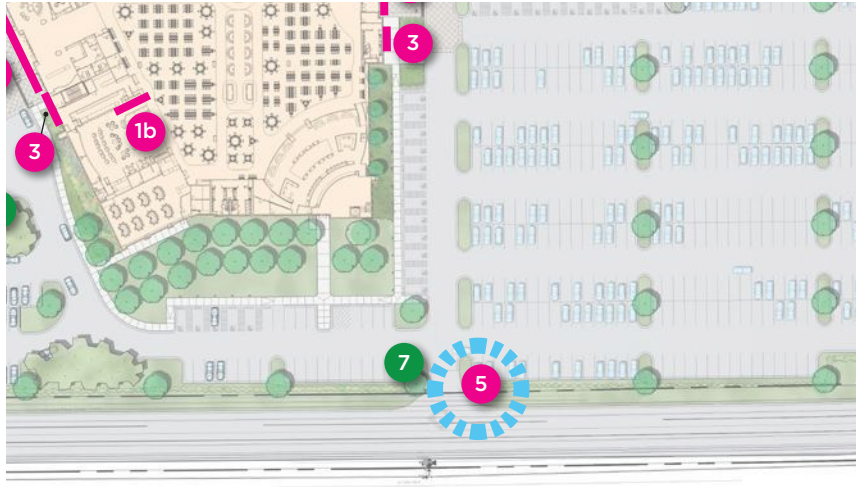
Structural framing developed
by signage contractor. Stamped
engineering drawings required for
fabrication, permitting and install



2 SIDE DETAILS
scale: 1/4"=1'-0"



4b ST 4b - OFF SITE PROJECT ID DIGITAL PYLON SIGN

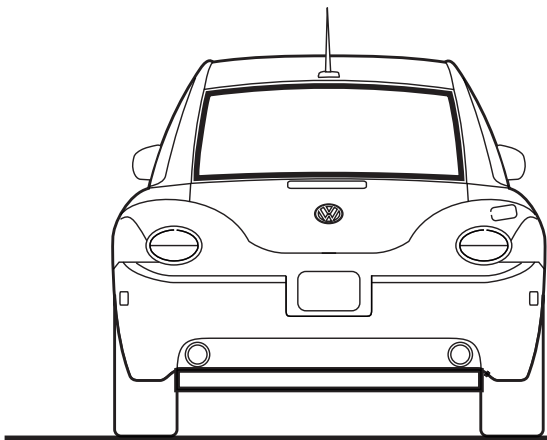


5 PROJECT ID MONUMENT SIGN

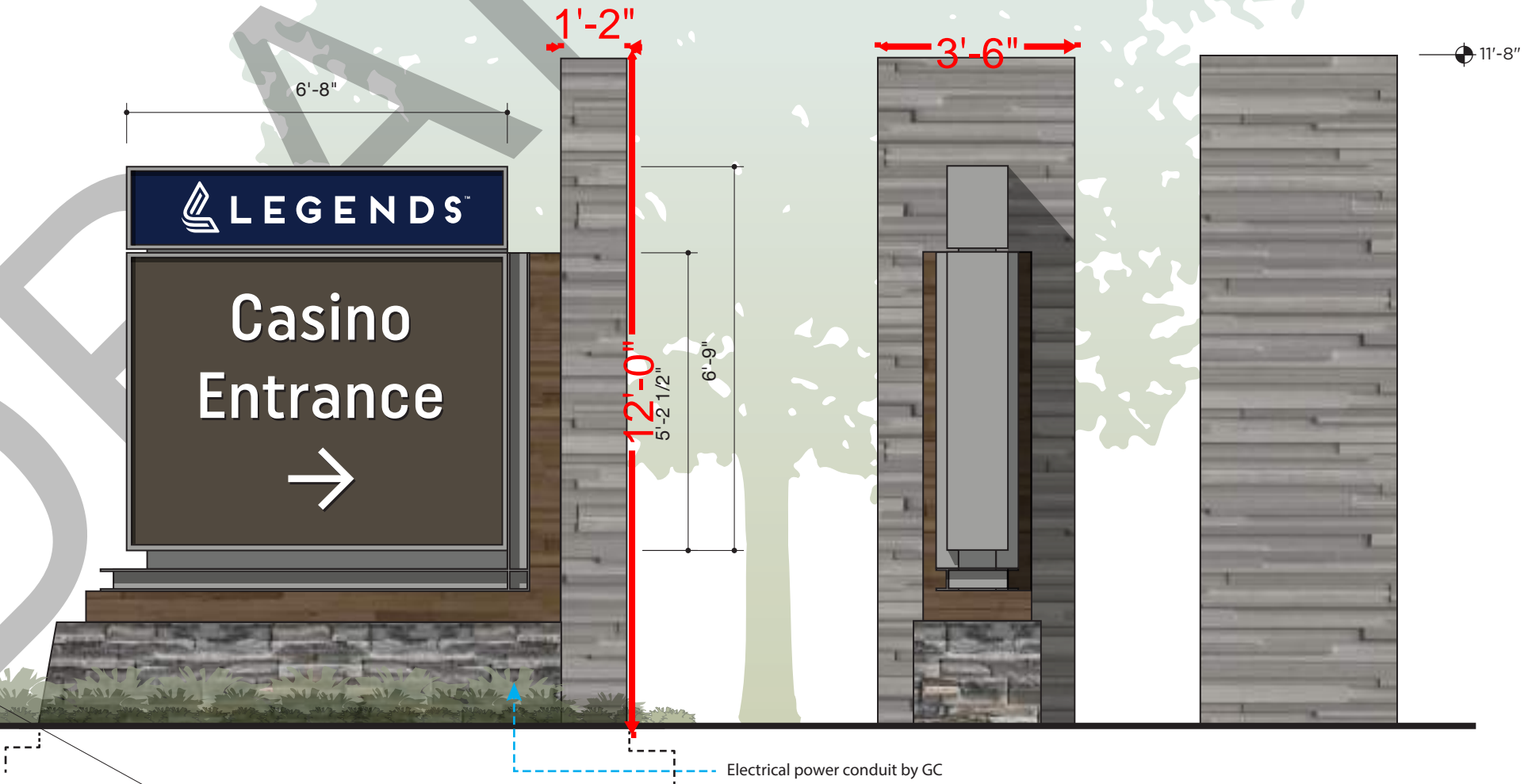


3D VIEW - REFERENCE ONLY

NOTE: no break-form corners
for fabricated metal construction
(typ)



Concrete footing
engineered per local codes
by Sign Contractor (typ)



1 ELEVATION, ST 5 - SITE MONUMENT ID
scale: 3/8"=1'-0"

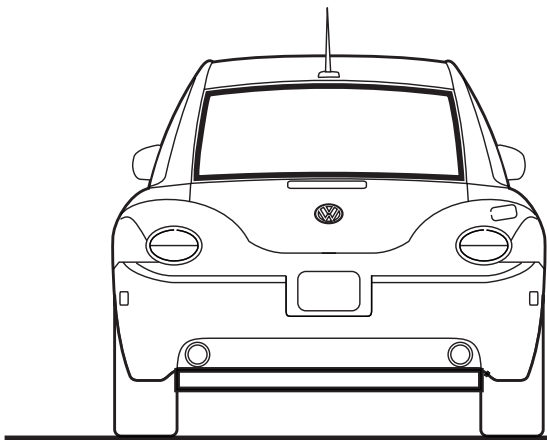
2 SIDE ELEV
scale: 3/8"=1'-0"

3 SIDE ELEV
scale: 3/8"=1'-0"



3D VIEW - REFERENCE ONLY

NOTE: no break-form corners
for fabricated metal construction
(typ)



Concrete footing
engineered per local codes
by Sign Contractor (typ)

1 ELEVATION, ST 5 - SITE MONUMENT ID
scale: 3/8"=1'-0"



2 SIDE ELEV
scale: 3/8"=1'-0"

3 SIDE ELEV
scale: 3/8"=1'-0"