

INTERIM REVIEW ONLY

THESE DOCUMENTS ARE INCOMPLETE
THEY ARE NOT INTENDED TO BE USED
FOR PERMIT, BIDDING OR
CONSTRUCTION

3/13/2024 4:40:58 PM

CHEROKEE NATION CATOOSA CHILD DEVELOPMENT CENTER

CATOOSA, OKLAHOMA

A101A
FIRST FLOOR PLAN - AREA A

BLUE RIVER PROJECT NUMBER
202300111

ISSUE DATE:
03/14/2024

ISSUE:
CM PACKAGE

OTHER ISSUE DATES:
NO. DESCRIPTION DATE

NO.	DESCRIPTION	DATE

SHEET NAME:
**FIRST FLOOR
PLAN - AREA A**

SHEET NUMBER:
A101A

© 2024 COPYRIGHT BLUE RIVER ARCHITECTS, LLC

FLOOR PLAN GENERAL NOTES

- ALL INTERIOR DIMENSIONS ARE TO THE FACE OF STUD, UNLESS NOTED OTHERWISE. DO NOT SCALE DRAWINGS. CONTACT ARCHITECT FOR CLARIFICATION.
- ALL EXTERIOR DIMENSIONS ARE FROM FACE OF EXTERIOR FINISH, UNLESS NOTED OTHERWISE.
- UNLESS DIMENSIONED OTHERWISE, ALIGN PARTITIONS ON GRIDLINES WITH CENTERLINE OF STUD.
- INTERIOR PARTITIONS ARE TYPE XXXX UNLESS NOTED OTHERWISE. REFER TO SHEET A400 FOR PARTITION TYPES.
- WHEN WALL, PARTITIONS OF DIFFERENT FIRE OR SOUND RATINGS INTERSECT, THE HIGHEST RATED PARTITION SHALL TAKE PRECEDENCE.
- WHERE EQUIPMENT IS SHOWN IN DASHED AND / OR HALFTONE, IT SHALL BE OWNER FURNISHED, OWNER INSTALLED UNLESS NOTED OTHERWISE. EQUIPMENT, WHERE SHOWN, IS FOR COORDINATION AND BACKING PURPOSES ONLY. CONTRACTOR MAKES AND MODELS WITH OWNER. VERIFY EQUIPMENT ROUGH-IN DIMENSIONS WITH MANUFACTURER. COORDINATE UTILITIES FOR EQUIPMENT WITH OWNER'S EQUIPMENT AND HELP DOCUMENTS. CONTRACTOR TO VERIFY AND COORDINATE ALL EQUIPMENT WITH OWNER, INCLUDING BUT NOT LIMITED TO, HEIGHT, LOCATION, BACKING REQUIREMENTS, POWER AND CLEARANCES.
- REFER TO SHEET A400 FOR DOOR SCHEDULE AND DETAILS.
- REFER TO SHEET ID001 FOR FINISH INFORMATION, SCHEDULES, AND DETAILS.
- REFER TO A300 SERIES SHEETS FOR EXTERIOR ELEVATIONS.
- REFER TO A400 SERIES SHEETS FOR ENLARGED PLANS.

PARTITION TYPES GRAPHICS CONVENTION

TYPICAL PARTITION WITH NO SPECIAL MATERIALS OR RATINGS

FIRE RATED PARTITIONS USE STRIPES TO CONVEY HOURS

- 1-HR FIRE RATING
- 2-HR FIRE RATING
- 3-HR FIRE RATING

SMOKE RESISTANCE IS NOTED WITH TAN DIAGONAL HATCH

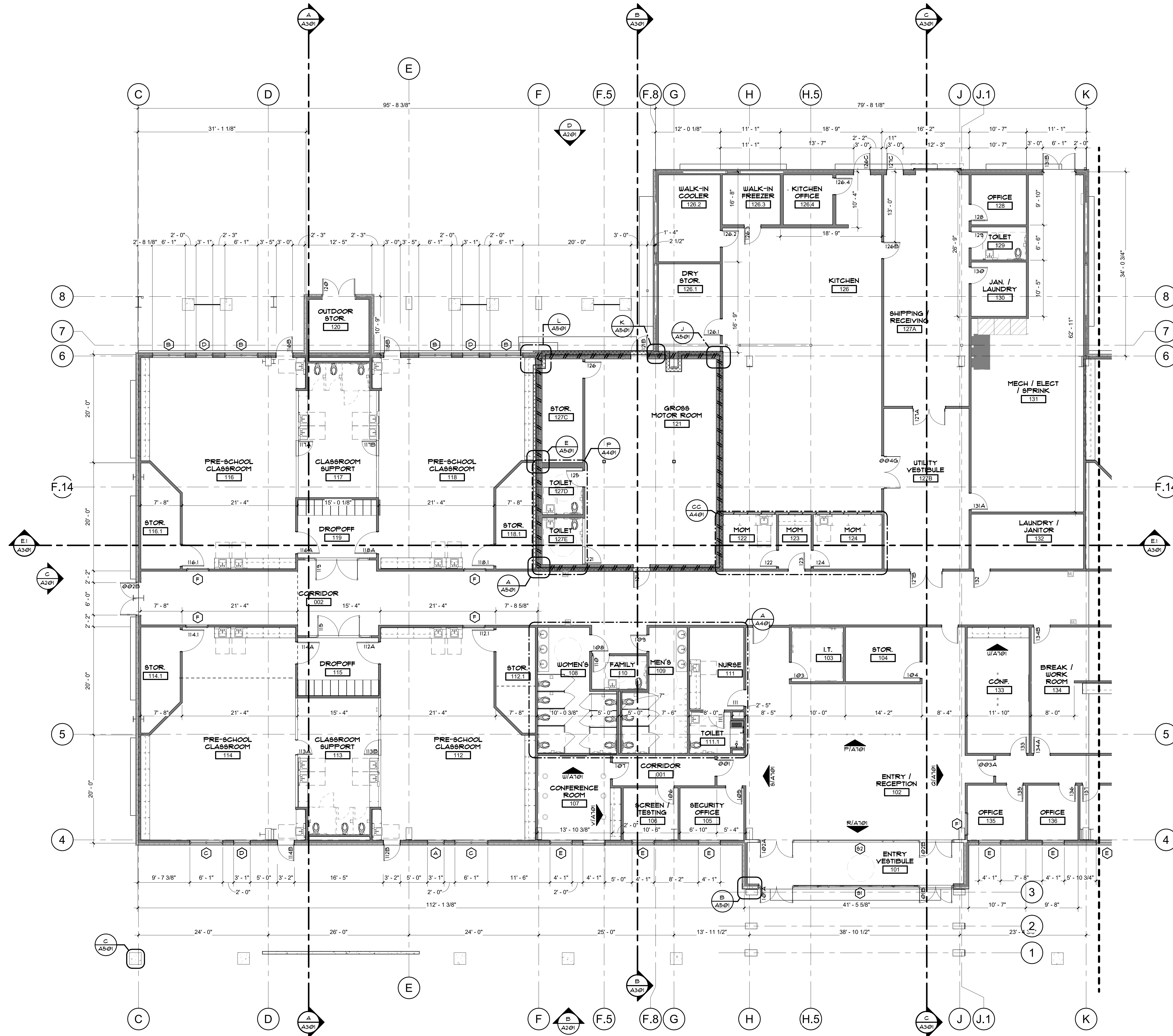
SMOKE PARTITION

PARTITIONS WITH COMBINED FIRE RATING & SMOKE RESISTANCE

- 1-HR FIRE/SMOKE RATED
- 2-HR FIRE/SMOKE RATED

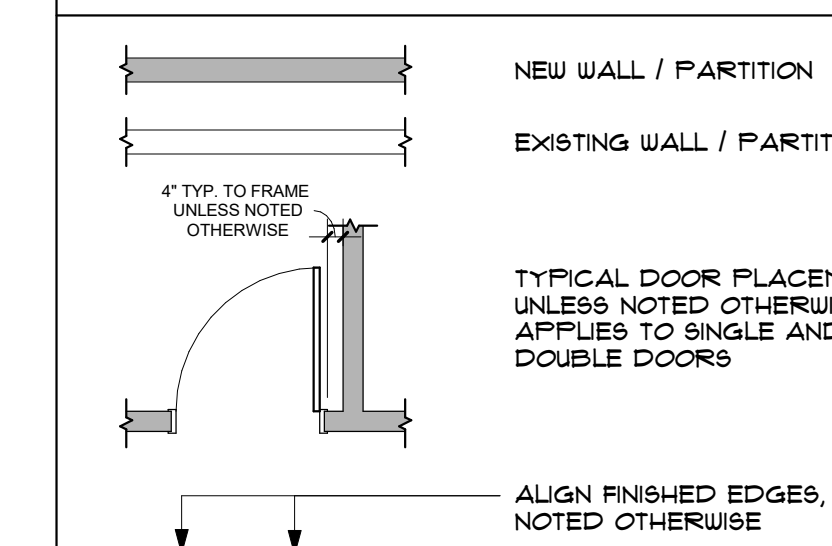
RATINGS MAY BE COMBINED WITH SPECIAL WALL MATERIALS: EX

- 1-HR FIRE RATED MASONRY
- 2-HR FIRE/SMOKE RATED MASONRY
- 1-HR CONCRETE



A FLOOR PLAN - AREA A
1/8" = 1'-0"

FLOOR PLAN GENERAL NOTES

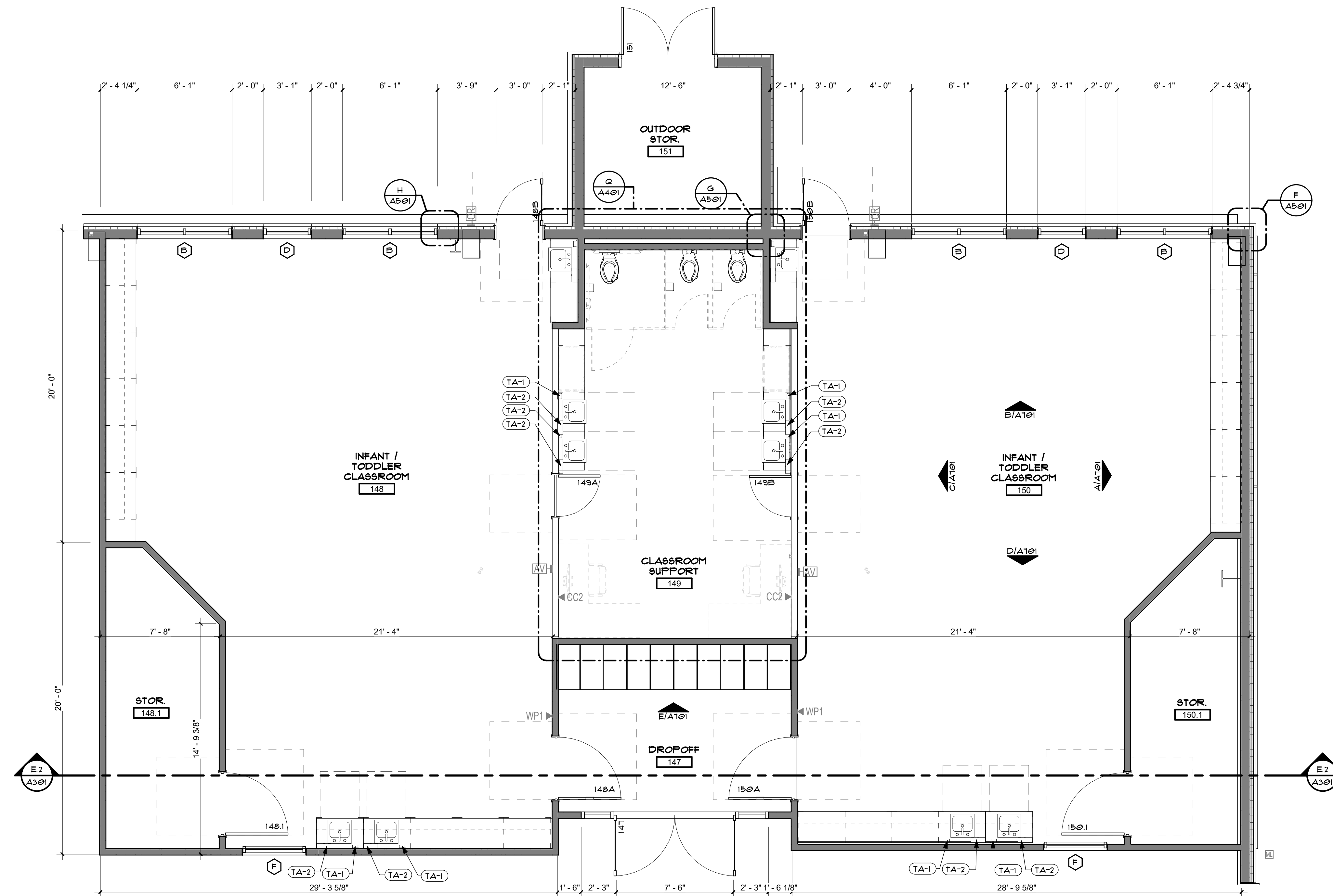
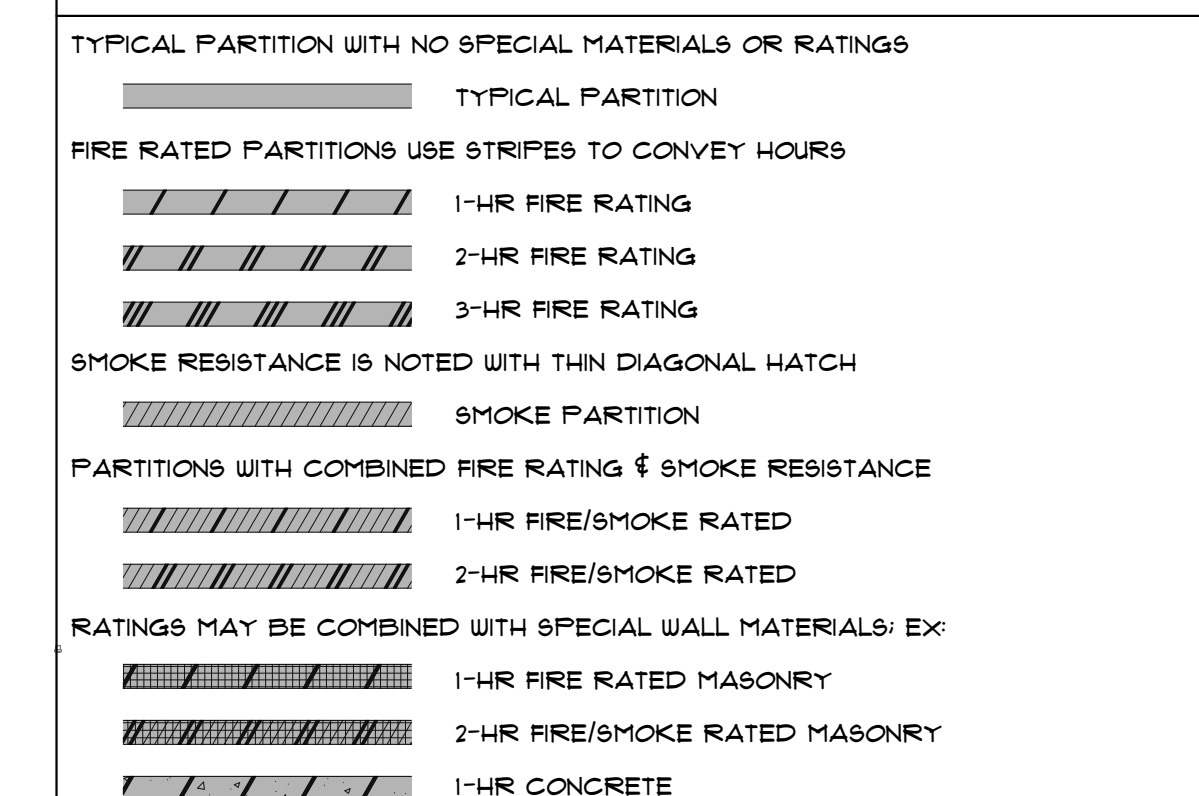


- ALL INTERIOR DIMENSIONS ARE TO THE FACE OF STUD, UNLESS NOTED OTHERWISE. DO NOT SCALE DRAWINGS. CONTACT ARCHITECT FOR CLARIFICATION.
- ALL EXTERIOR DIMENSIONS ARE FROM FACE OF EXTERIOR FINISH, UNLESS NOTED OTHERWISE.
- UNLESS DIMENSIONED OTHERWISE, ALIGN PARTITIONS ON GRIDLINES WITH CENTERLINE OF STUD.
- INTERIOR PARTITIONS ARE TYPE XXXX UNLESS NOTED OTHERWISE. REFER TO SHEET A601 FOR PARTITION TYPES.
- WHEN WALL PARTITIONS OF DIFFERENT FIRE OR SOUND RATINGS INTERSECT, THE HIGHEST RATED PARTITION SHALL TAKE PRECEDENCE.
- WHERE EQUIPMENT IS SHOWN IN DASHED AND / OR HALFTONE, IT SHALL BE OWNER FURNISHED, UNLESS NOTED OTHERWISE. EQUIPMENT, WHERE SHOWN, IS FOR COORDINATION AND BACKLOG PURPOSES ONLY. CONFIRM MAKES AND MODELS WITH OWNER. VERIFY EQUIPMENT ROUGH-IN DIMENSIONS WITH MANUFACTURER. COORDINATE UTILITIES FOR EQUIPMENT WITH OWNER'S EQUIPMENT AND MEP DOCUMENTS. CONTRACTOR TO VERIFY AND COORDINATE ALL EQUIPMENT WITH OWNER, INCLUDING BUT NOT LIMITED TO WEIGHT, LOCATION, BACKLOG REQUIREMENTS, POWER AND CLEARANCES.

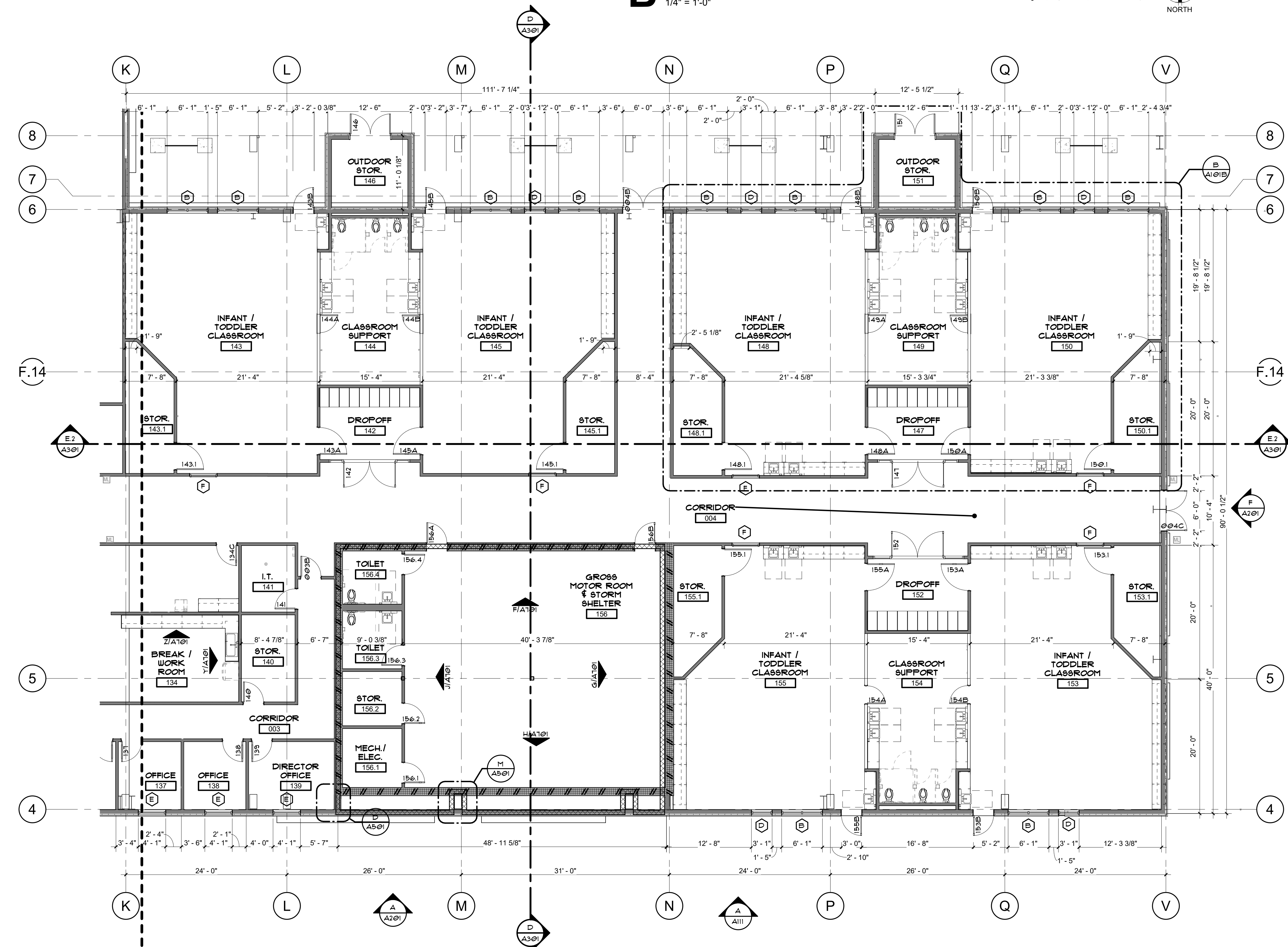
PARTITION TYPES NAMING CONVENTION

SYMBOL	DESCRIPTION	SUB-TYPE
A	1 1/2" HAT CHANNEL	A 6" ABOVE CEILING, BRACED HEAD (OR 8" TO STRUCTURE ABOVE IF UNDER 24")
B	1 1/2" METAL STUD	B TO UNDERSIDE OF STRUCTURE ABOVE
C	3 5/8" METAL STUD	C 8" TO UNDERSIDE OF STRUCTURE ABOVE, GYP TO 6" ABOVE CEILING
D	6" METAL STUD	D 8" & GYP ONE SIDE TO STRUCTURE, GYP OTHER SIDE TO 6" ABOVE CEILING
E	6" METAL STUD	E 8" & GYP ONE SIDE TO STRUCTURE, GYP OTHER SIDE TO 6" ABOVE CEILING
F	6" METAL STUD	F 8" & GYP ONE SIDE TO STRUCTURE, GYP OTHER SIDE TO 6" ABOVE CEILING
G	6" METAL STUD	G 8" & GYP ONE SIDE TO STRUCTURE, GYP OTHER SIDE TO 6" ABOVE CEILING
H	6" METAL STUD	H 8" & GYP ONE SIDE TO STRUCTURE, GYP OTHER SIDE TO 6" ABOVE CEILING
I	6" METAL STUD	I 8" & GYP ONE SIDE TO STRUCTURE, GYP OTHER SIDE TO 6" ABOVE CEILING
J	6" METAL STUD	J 8" & GYP ONE SIDE TO STRUCTURE, GYP OTHER SIDE TO 6" ABOVE CEILING
K	6" METAL STUD	K 8" & GYP ONE SIDE TO STRUCTURE, GYP OTHER SIDE TO 6" ABOVE CEILING
L	6" METAL STUD	L 8" & GYP ONE SIDE TO STRUCTURE, GYP OTHER SIDE TO 6" ABOVE CEILING
M	6" METAL STUD	M 8" & GYP ONE SIDE TO STRUCTURE, GYP OTHER SIDE TO 6" ABOVE CEILING
N	6" METAL STUD	N 8" & GYP ONE SIDE TO STRUCTURE, GYP OTHER SIDE TO 6" ABOVE CEILING
O	6" METAL STUD	O 8" & GYP ONE SIDE TO STRUCTURE, GYP OTHER SIDE TO 6" ABOVE CEILING
P	6" METAL STUD	P 8" & GYP ONE SIDE TO STRUCTURE, GYP OTHER SIDE TO 6" ABOVE CEILING
Q	6" METAL STUD	Q 8" & GYP ONE SIDE TO STRUCTURE, GYP OTHER SIDE TO 6" ABOVE CEILING
R	6" METAL STUD	R 8" & GYP ONE SIDE TO STRUCTURE, GYP OTHER SIDE TO 6" ABOVE CEILING
S	6" METAL STUD	S 8" & GYP ONE SIDE TO STRUCTURE, GYP OTHER SIDE TO 6" ABOVE CEILING
T	6" METAL STUD	T 8" & GYP ONE SIDE TO STRUCTURE, GYP OTHER SIDE TO 6" ABOVE CEILING
U	6" METAL STUD	U 8" & GYP ONE SIDE TO STRUCTURE, GYP OTHER SIDE TO 6" ABOVE CEILING
V	6" METAL STUD	V 8" & GYP ONE SIDE TO STRUCTURE, GYP OTHER SIDE TO 6" ABOVE CEILING
W	6" METAL STUD	W 8" & GYP ONE SIDE TO STRUCTURE, GYP OTHER SIDE TO 6" ABOVE CEILING
X	6" METAL STUD	X 8" & GYP ONE SIDE TO STRUCTURE, GYP OTHER SIDE TO 6" ABOVE CEILING
Y	6" METAL STUD	Y 8" & GYP ONE SIDE TO STRUCTURE, GYP OTHER SIDE TO 6" ABOVE CEILING
Z	6" METAL STUD	Z 8" & GYP ONE SIDE TO STRUCTURE, GYP OTHER SIDE TO 6" ABOVE CEILING

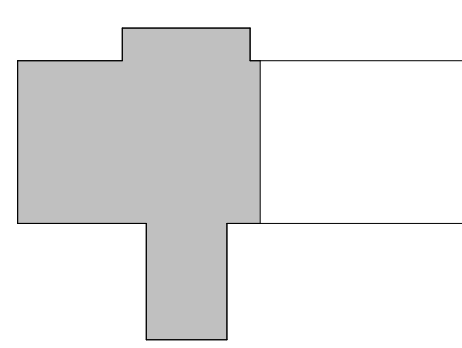
PARTITION TYPES GRAPHICS CONVENTION



B ENLARGED CLASSROOM PLAN
1/4" = 1'-0"



A FLOOR PLAN - AREA B
1/8" = 1'-0"



REFLECTED CEILING PLAN DIAGRAMS

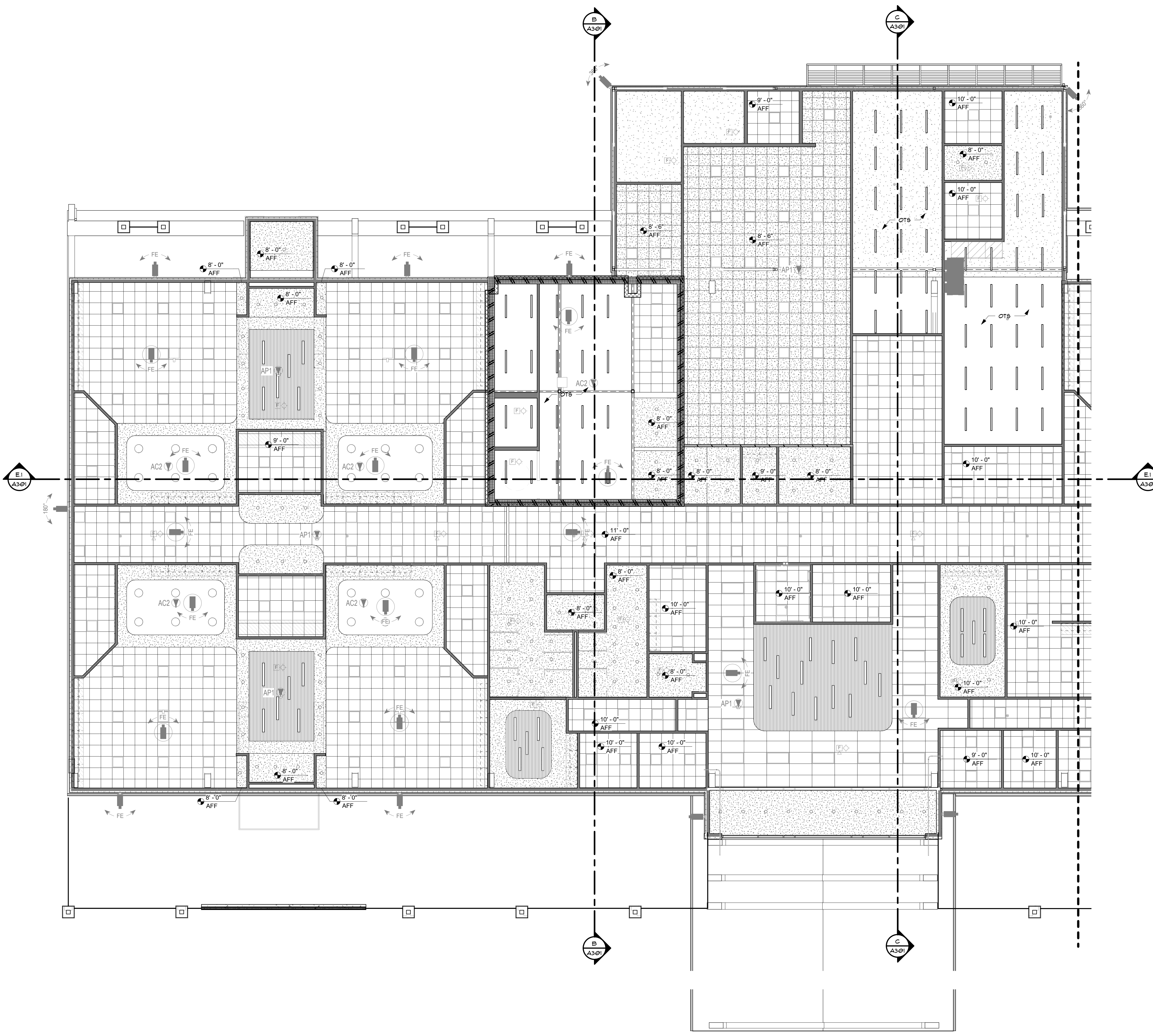
- THE FOLLOWING DESIGN CRITERIA APPLIES UNLESS SPECIFICALLY NOTED AND DIMENSIONED OTHERWISE.
- A. DIMENSIONS:** WHEN COMPLETELY DIMENSIONED ON CEILING PLAN, LOCATE ITEMS AS INDICATED WHEN SHOWN DIMENSIONED BY A REFLECTED CEILING PLAN. SPECIFIC DIMENSIONS SHOWN BY REFLECTED CEILING PLANS TAKE PRECEDENCE OVER TYPICAL LOCATIONS.
- B. CENTERING:** WHEN NOT DIMENSIONED BUT SHOWN CENTERED, LOCATE ITEMS CENTERED IN SPACE OR SPACE CREATED BETWEEN TWO ELEMENTS WHEN NOT DIMENSIONED, BUT SHOWN CENTERED.
- C. SYMMETRY:** LOCATE FEATURES SYMMETRICALLY. LOCATE ITEMS ALIGNED WITH OTHER ITEMS SHOWN DIMENSIONED ELSEWHERE IN SPACE.
- D. FIXTURES IN ACOUSTICAL CEILING TILE:** WHEN NOT DIMENSIONED BUT OCCURS ON ACT / SQUARE GRID-TYPE CEILING, LOCATE ITEMS (LIGHT FIXTURES, SPRINKLER HEADS, AND OTHER DEVICES) AT CENTER OF PANEL ON ACT / SQUARE GRID-TYPE CEILING.
- E. ACOUSTICAL CEILING TILE PLACEMENT:** ACT / SQUARE AND / OR RECTANGULAR GRID-TYPE CEILING TO BE EVENLY SPACED. CUT TO FIT IRREGULAR GRID AND PERIMETER EDGE TRIM MAKE FIELD CUT EDGES OF SAME PROFILE AS FACTORY EDGES. DOUBLE CUT AND FIELD PAINT EXPOSED REVEAL EDGES.
- F. CONDUIT:** CONCEAL ALL WIRE IN CONDUIT WHERE EXPOSED TO VIEW. INCLUDES:
1. ALL ELECTRICAL WIRING.
2. ALL DATA / IT / SECURITY WIRING. PROVIDE CONDUIT. CABLE TRAYS ARE ONLY ALLOWED WHERE CONCEALED BY ACT, DROP CEILING / CLOUDS, AND WHERE WIRE IS FULLY CONCEALED FROM VIEW. EXPOSED UNDERIDES OF CABLE TRAYS ARE ONLY ALLOWED WHERE MATERIAL IS PLACED SIMILAR TO MECHANICAL DUCTWORK. EXPOSED RANDOMLY PLACED CABLE TRAYS ARE NOT ALLOWED.
3. MC CABLE IS NOT ALLOWED AT EXPOSED LOCATIONS.

REFLECTED CEILING PLAN NOTES

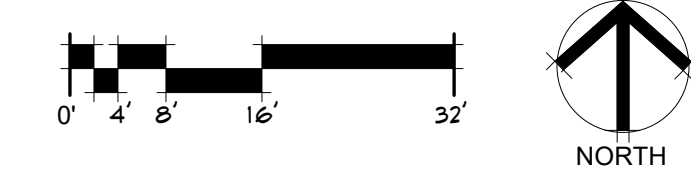
- ALL CEILING SHALL BE X" AFF, UNLESS NOTED OTHERWISE.
- ALL CEILING FINISHES TO BE ACT, UNLESS NOTED OTHERWISE. ALL CEILING GRIDS TO BE CENTERED IN ROOM, UNLESS NOTED OTHERWISE.
- REFER TO MECHANICAL AND ELECTRICAL DRAWINGS FOR HOANGING LOCATIONS OF ITEMS WHERE NO CEILING IS REQUIRED OR INDICATED.
- IN THE CASE OF MINOR DISCREPANCIES BETWEEN MECHANICAL, ELECTRICAL, PLUMBING AND ARCHITECTURAL DOCUMENTS IN THE LOCATION OF CEILING MOUNTED COMPONENTS, THE ARCHITECTURAL REFLECTED CEILING PLAN SHALL GOVERN. IN THE CASE OF MAJOR DISCREPANCIES, THE ARCHITECT SHALL BE NOTIFIED AS SOON AS THE DISCREPANCY IS DISCOVERED PRIOR TO PROCEEDING WITH THE WORK.
- LIGHTS, EXIT SIGNS, SMOKE DETECTORS, SPEAKERS, DIFFUSERS, STROBES, AND MISCELLANEOUS DEVICES SHALL BE CENTERED IN THE CEILING TILE IN WHICH THEY OCCUR, UNLESS NOTED OTHERWISE.
- CENTER, ALIGN AND / OR LOCATE LIGHT FIXTURES, MECHANICAL GRILLES, LIFE SAFETY DEVICES, OCCUPANCY SENSORS, SECURITY AND DATA FIXTURES AND OTHER MISCELLANEOUS COMPONENTS IN A UNIFORM AND ORDERLY FASHION, UNLESS ALTERNATE ARRANGEMENT IS SPECIFICALLY DIMENSIONED AND NOTED.
- IT IS THE CONTRACTOR'S RESPONSIBILITY TO COORDINATE THE FIT OF ALL WORK AND TO PROVIDE A UNIFORM AND ORDERLY PLACEMENT AND APPEARANCE, WHETHER EXPOSED TO VIEW OR CONCEALED BY FINISHES.
- ALL SPRINKLER HEADS SHALL BE ALIGNED IN THE SAME CEILING LOCATION PARALLEL TO THE WALL WITH EACH SPECIFIC CEILING CONSTRUCTION.
- CENTER EXIT SIGNS ABOVE DOORS, UNLESS ALTERNATE ARRANGEMENT IS SPECIFICALLY DIMENSIONED AND NOTED.
- CENTER, ALIGN AND LOCATE ACCESS PANELS IN ACCORDANCE WITH DESIGN CRITERIA FOR OTHER DEVICES. SUBMIT DRAWINGS THAT INDICATE EXACT SIZE, TYPE AND LOCATION OF CEILING AND WALL ACCESS PANELS FOR REVIEW AND ACCEPTANCE BEFORE INSTALLATION. ALL ACCESS PANELS SHALL BE PAINTED, UNLESS NOTED OTHERWISE AND EXTERIOR GRADE WHERE REQUIRED.
- PROVIDE GYP-SUM BOARD BULKHEADS WHERE CEILING OF DIFFERENT HEIGHTS OR ORIENTATION ADJ. DO NOT BUILD BULKHEADS OF ACOUSTICAL CEILING MATERIAL.
- ALIGN ALL SPOFFS AND / OR BULKHEADS WITH ADJACENT WALLS, UNLESS NOTED OTHERWISE.
- PROVIDE SUFFICIENT SUPPORT AND GRID SYSTEMS TO SUPPORT ALL CEILING MOUNTED DEVICES. ALL FIXTURES SHALL BE SUPPORTED AT EACH CORNER.
- ALL OUTLETS, RECEPTACLES, DEVICES AND COVER PLATES SHALL BE INSTALLED PLUMB AND LEVEL. CROOKED INSTALLATION IS NOT ALLOWED.
- MISALIGNED MEP FIXTURES OF ANY TYPE OR AT ANY LOCATION EXPOSED TO VIEW ARE NOT ALLOWED. MISALIGNED FIXTURES SHALL BE ADJUSTED OR REMOVED AND REPLACED IF REQUIRED FOR PROPER ALIGNMENT AT NO ADDITIONAL COST.
- ALL RECESSED LIGHTING TO BE SEALED AIR-TIGHT, ICC-RATED AND SEALED TO GYP-SUM BOARD OR FINISH MATERIAL AS REQUIRED BY THE IECC (INTERNATIONAL ENERGY CONSERVATION CODE) ALL MECHANICAL, ELECTRICAL AND PLUMBING FIXTURES SHALL BE IECC COMPLIANT.
- CONTRACTOR TO COORDINATE ALL OUTLETS, SWITCHES AND POWER FEED WITH CASEWORK, PARTITIONS, FINISHES, FIXTURES AND EQUIPMENT.
- SPRINKLER HEAD TYPES AND FINISHES:
A. EXPOSED STRUCTURE EXPOSED / CHROME
B. FINISHED CEILING OR WALLS FULLY RECESSED AND CONCEALED WITH WHITE COVER PLATE, FLAT AND FLUTE FINISH TO MATCH ADJACENT
C. FIRE FINISHED METAL CEILING OR WALL FEATURES FULLY RECESSED AND CONCEALED WITH COVER PLATE, FLAT AND FLUTE TO MATCH ADJACENT FINISH. CUSTOM COLOR MAY BE REQUIRED IF MANUFACTURER'S RANGE DOES NOT PROVIDE MATCH IN THE OPINION OF THE ARCHITECT.
D. PROVIDE SPRINKLER GUARDS WHERE REQUIRED BY CODE.
- PROVIDE SPRINKLER HEADS AND COVERS IN ACCORDANCE WITH SPECIFIED LEVEL OF EXPOSURE (TO VIEW) DESIGN CRITERIA AND AS INDICATED. PROVIDE BRAIDED METAL FLEXIBLE SPRINKLER DROPS AT ALL FINISHED CEILING OR WHERE REQUIRED FOR SPECIFIED CRITERIA. CENTER AND ALIGN PIPES WITH ARCHITECTURAL FEATURES. PROVIDE ADDITIONAL LEADS BEYOND THAT REQUIRED FOR MINOR DISCREPANCIES AS REQUIRED TO MATCH WITH ARCHITECTURAL LAYOUT, AND UNIFORM ALIGNMENT WITH OTHER FIXTURES. SUBMIT LAYOUT FOR REVIEW PRIOR TO ARIU OR INSTALLATION.
- PROVIDE FIRE FINISHED GRAY ELECTRICAL DEVICES AND STAINLESS STEEL COVER PLATES AT ALL WALLS IN PROJECT. AT ALL OTHER LOCATIONS, SUCH AS CASEWORK, RECEPTACLES AND COVER PLATES SHALL MATCH ADJACENT FINISHES, AS DETERMINED AND SELECTED BY THE ARCHITECT FROM MANUFACTURER'S FULL RANGE. FIELD PAINT WHERE REQUIRED.
- MAINTAIN CONTINUOUS FIRE RATED ENCLOSURES AS REQUIRED AT RATED WALLS AND CEILING. PROVIDE FIRE RATED FLOOR COVERS, J-BOWBS OR CONSTRUCT GYP-SUM BOARD ENCLOSURES WHERE REQUIRED FOR FIXTURE OR MEP RISES TO MAINTAIN CONTINUOUS FIRE RATING.
- REFER TO MECHANICAL DRAWINGS FOR ADDITIONAL INFORMATION FOR DIFFUSERS AND GRILLE TYPES. REFER TO ELECTRICAL DRAWINGS FOR FIXTURE SCHEDULES AND ADDITIONAL INFORMATION. DESIGN INTENT FOR APPEARANCE, TYPE, ARRANGEMENT AND LOCATION IS INDICATED ON ARCHITECTURAL DRAWINGS. REPORT DISCREPANCIES TO ARCHITECT FOR CLARIFICATION PRIOR TO ORDERING MATERIALS OR THE START OF ROUGH-IN.
- LIFE SAFETY DEVICE COLORS: GRAY (UNLESS RED IS SPECIFICALLY REQUIRED BY CODE)
A. WHITE AT WHITE CEILING OR WHERE EXPOSED STRUCTURES.
B. OTHER CEILING: NOT ALLOWED. USE WALL MOUNTED.
C. INTERIOR / EXTERIOR WALLS: GRAY.
- EXPOSED METAL DUCTWORK: ALL METAL DUCTWORK, EXPOSED TO VIEW SHALL HAVE UNIFORM AND NEAT REPAINT AND SEAMS. CLEAN EXCESS SEALANT. PROVIDE 1/2 FOOT BY 1/2 FOOT MOCK-UP TO ILLUSTRATE ALL SEAMS AND SEALANT TYPES IN PROJECT.
- EXPOSED STRUCTURE WHEN NOT DIMENSIONED, BUT OCCURS ON OR ADJACENT TO EXPOSED STRUCTURE, LOCATE ITEMS (LIGHT FIXTURES, SPRINKLER PIPING, FLEXIBLE SPRINKLER DROPS, PIPES, PLUMBING DEVICES, AND ALL ASSOCIATED MOUNTING BRACKETS AND FASTENERS) CENTERED WITH SPACE BETWEEN OR ON STRUCTURAL ELEMENTS. MATCH ORIENTATION OF STRUCTURE, UNLESS A SPECIFIC ALTERNATE ARRANGEMENT IS DIMENSIONED AND NOTED. CHANGE ORIENTATION OF ITEMS IN ACCORDANCE WITH DESIGN CRITERIA FOR PLACEMENT. TO MATCH CHANGES IN ORIENTATION OF STRUCTURE, WHERE MULTIPLE SYSTEMS NEED TO SHARE THE SAME SPACE, CENTER ONE SYSTEM AND ALIGN ADJACENT SYSTEMS IN UNIFORM AND ORDERLY FASHION.
- COORDINATION ALL DEVICES REQUIRED FOR PROJECT MAY NOT BE SHOWN ON ARCHITECTURAL DRAWINGS. REFER TO MECHANICAL, ELECTRICAL, PLUMBING AND TECHNOLOGY DRAWINGS FOR ADDITIONAL DEVICES. ALL DEVICES IN PROJECT SHALL FOLLOW DESIGN CRITERIA FOR PLACEMENT, AS INDICATED, WHETHER OR NOT SHOWN ON ARCHITECTURAL DRAWINGS. REPORT DISCREPANCIES TO ARCHITECT PRIOR TO INSTALLATION.
- COORDINATION DRAWINGS - PROVIDE THE FOLLOWING: PREPARE COORDINATION DRAWINGS TO A SCALE OF 1/4" = 1'-0" OR LARGER, DETAILING MAJOR ELEMENTS, COMPONENTS AND SYSTEMS OF FIRE PROTECTION EQUIPMENT AND MATERIALS IN RELATIONSHIP WITH OTHER SYSTEMS INSTALLATIONS AND MATERIALS. INDICATE LOCATIONS WHERE SPACE IS LIMITED FOR INSTALLATION AND ACCESS AND WHERE SEQUENCING AND COORDINATION OF INSTALLATION ARE IMPORTANT TO THE EFFICIENT FLOW OF THE WORK, INCLUDING, BUT NOT NECESSARILY LIMITED TO THE FOLLOWING:
A. INDICATE THE PROPOSED LOCATIONS OF PIPING, EQUIPMENT, HANGERS, HEAD TYPES AND LOCATIONS, AND MATERIALS.
B. CLEARANCES FOR INSTALLING AND MAINTAINING INSULATION.

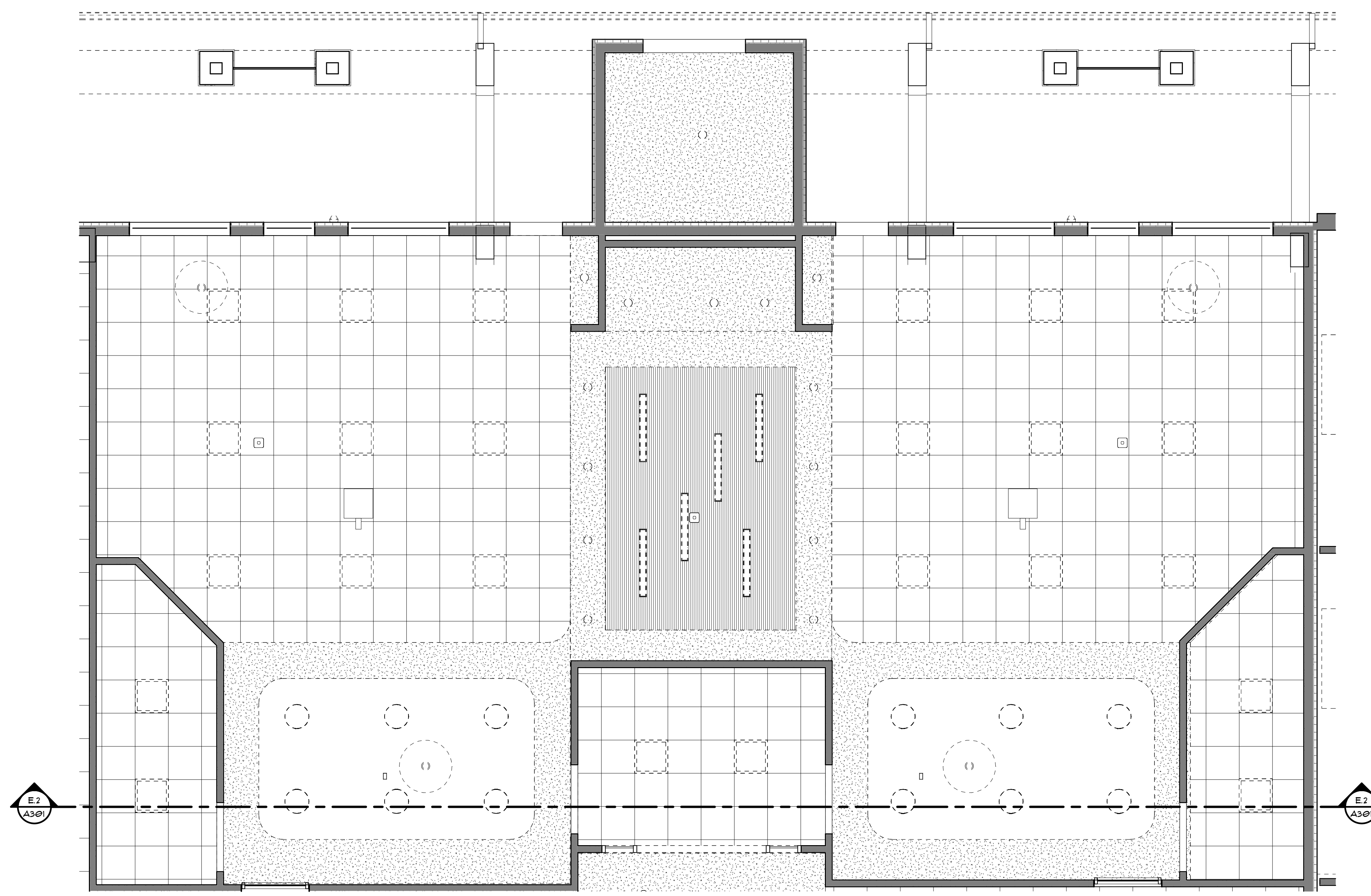
REFLECTED CEILING PLAN LEGEND

NOTE: REFER TO STRUCTURAL, ELECTRICAL AND MECHANICAL DRAWINGS FOR ADDITIONAL INFORMATION.



A FIRST FLOOR REFLECTED CEILING PLAN
1/8" = 1'-0"





B ENLARGED CLASSROOM RCP
1/4" = 1'-0"

REFLECTED CEILING PLAN DIAGRAMS

THE FOLLOWING DESIGN CRITERIA APPLIES UNLESS SPECIFICALLY NOTED AND DIMENSIONED OTHERWISE.

A. DIMENSIONS: WHEN COMPLETELY DIMENSIONED ON CEILING PLAN LOCATE ITEMS AS INDICATED WHEN SHOWN DIMENSIONED BY A REFLECTED CEILING PLAN. SPECIFIC DIMENSIONS SHOWN BY REFLECTED CEILING PLANS TAKE PRECEDENCE OVER TYPICAL LOCATIONS.

B. CENTERING: WHEN NOT DIMENSIONED BUT SHOWN CENTERED LOCATE ITEMS CENTERED IN SPACE OR SPACE CREATED BETWEEN TWO ELEMENTS WHEN NOT DIMENSIONED, BUT SHOWN CENTERED.

C. SYMMETRY: LOCATE FEATURES SYMMETRICALLY. LOCATE ITEMS ALIGNED WITH OTHER ITEMS SHOWN DIMENSIONED ELSEWHERE IN SPACE.

D. FIXTURES IN ACOUSTICAL CEILING TILE: WHEN NOT DIMENSIONED BUT LOCATED ON A 1' SQUARE GRID-TYPE CEILING, LOCATE ITEMS (LIGHT FIXTURES, SPRINKLER HEADS, AND OTHER DEVICES) AT CENTER OF PANEL ON ACT 1' SQUARE GRID-TYPE CEILING.

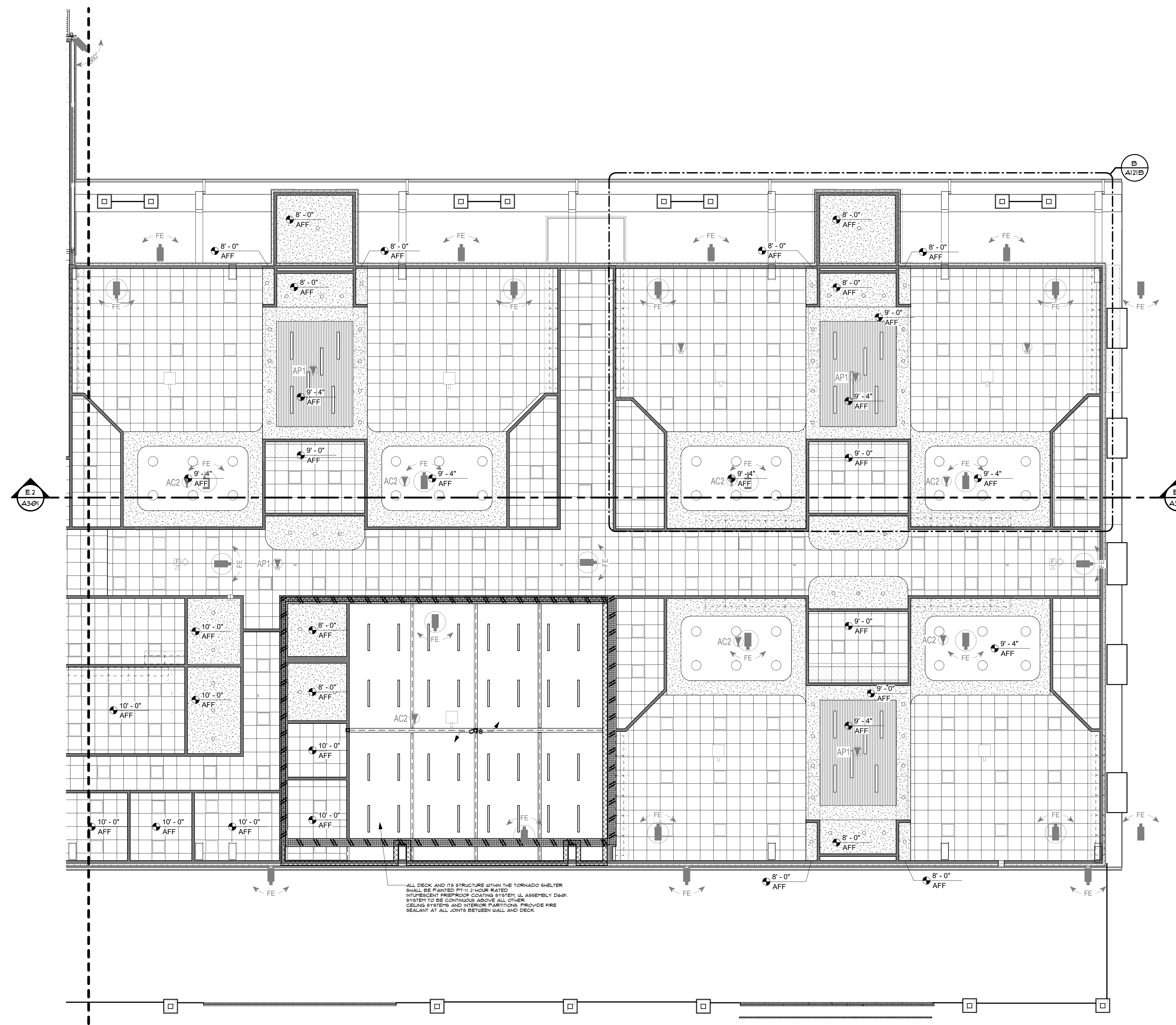
E. ACOUSTICAL CEILING TILE PLACEMENT: ACT 1' SQUARE AND / OR RECTANGULAR GRID-TYPE CEILING TO BE EVENLY SPACED. CUT TO FIT IRREGULAR GRID AND FINISH EDGE WITH MAKE FIELD CUT EDGES OF SAME PROFILE AS FACTORY EDGES. DOUBLE CUT AND FIELD PAINT EXPOSED REVEAL EDGES.

F. CONDUIT: CONCEAL ALL WIRE IN CONDUIT WHERE EXPOSED TO VIEW.

G. WIRING:

- ALL ELECTRICAL WIRING.
- ALL DATA / IT / SECURITY WIRING; PROVIDE CONDUIT. CABLE TRAYS ARE ONLY ALLOWED WHERE CONCEALED BY ACT, DROP CEILING / CLOUDS OR WHERE WIRE IS FULLY CONCEALED FROM VIEW. EXPOSED UNDERSIDES OF CABLE TRAYS ARE ONLY ALLOWED WHERE MATERIAL IS FLAGGED SIMILAR TO MECHANICAL DUCTWORK. EXPOSED RANDOMLY PLACED CABLE TRAYS ARE NOT ALLOWED.
- MC CABLE IS NOT ALLOWED AT EXPOSED LOCATIONS.

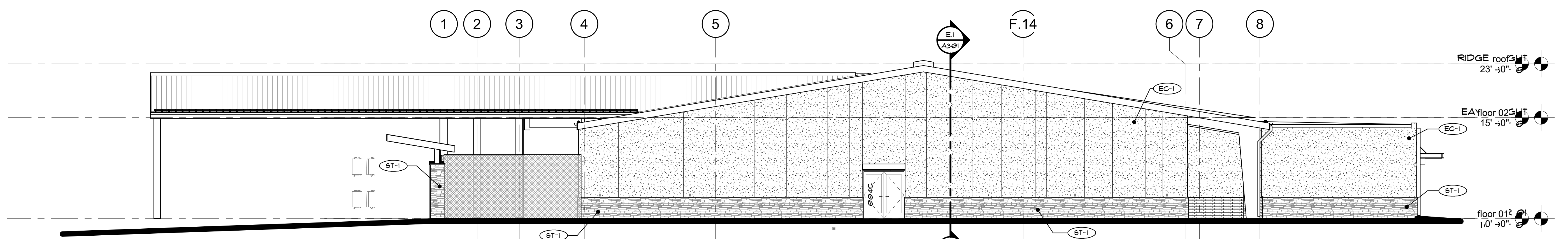
- ### REFLECTED CEILING PLAN NOTES
- ALL CEILING SHALL BE 8'-0" AFF UNLESS NOTED OTHERWISE.
 - ALL CEILING FINISHES TO BE ACT 1', UNLESS NOTED OTHERWISE. ALL CEILING GRIDS TO BE CENTERED IN ROOM, UNLESS NOTED OTHERWISE.
 - REFER TO MECHANICAL AND ELECTRICAL DRAWINGS FOR MOUNTING LOCATIONS OF ITEMS WHERE NO CEILING IS REQUIRED OR INDICATED.
 - IN THE CASE OF MINOR DISCREPANCIES BETWEEN MECHANICAL, ELECTRICAL, PLUMBING AND ARCHITECTURAL DOCUMENTS IN THE LOCATION OF CEILING MOUNTED COMPONENTS, THE ARCHITECTURAL REFLECTED CEILING PLAN SHALL GOVERN. IN THE CASE OF MAJOR DISCREPANCIES, THE ARCHITECT SHALL BE NOTIFIED AS SOON AS THE DISCREPANCY IS DISCOVERED PRIOR TO PROCEEDING WITH THE WORK.
 - LIGHTS, EXIT SIGNS, SMOKE DETECTORS, SPEAKERS, DIFFUSERS, STROBES, AND MISCELLANEOUS DEVICES SHALL BE CENTERED IN THE CEILING TILE IN WHICH THEY OCCUR, UNLESS NOTED OTHERWISE.
 - CENTER, ALIGN AND / OR LOCATE LIGHT FIXTURES, MECHANICAL GRILLES, LIFE SAFETY DEVICES, OCCUPANCY SENSORS, SECURITY AND DATA FIXTURES AND OTHER MISCELLANEOUS COMPONENTS IN A UNIFORM AND ORDERLY FASHION, UNLESS ALTERNATE ARRANGEMENT IS SPECIFICALLY DIMENSIONED AND NOTED.
 - IT IS THE CONTRACTOR'S RESPONSIBILITY TO COORDINATE THE RT OF ALL WORK AND TO PROVIDE A UNIFORM AND ORDERLY PLACEMENT AND APPEARANCE, WHETHER EXPOSED TO VIEW OR CONCEALED BY FINISHES.
 - ALL SPRINKLER HEADS SHALL BE ALIGNED IN THE SAME CEILING LOCATION PARALLEL TO THE WALL WITH EACH SPECIFIC CEILING CONSTRUCTION.
 - CENTER EXIT SIGNS ABOVE DOORS, UNLESS ALTERNATE ARRANGEMENT IS SPECIFICALLY DIMENSIONED AND NOTED.
 - CENTER, ALIGN AND LOCATE ACCESS PANELS IN ACCORDANCE WITH DESIGN CRITERIA FOR OTHER DEVICES. SUBMIT SHOP DRAWINGS THAT INDICATE EXACT TYPE AND LOCATION OF CEILING AND WALL ACCESS PANELS FOR REVIEW AND ACCEPTANCE BEFORE INSTALLATION. ALL ACCESS PANELS SHALL BE PAINTED, UNLESS NOTED OTHERWISE AND EXTERIOR GRADE WHERE REQUIRED.
 - PROVIDE GYPSUM BOARD BULKHEADS WHERE CEILING IS DIFFERENT HEIGHTS OR ORIENTATION ADJUT. DO NOT BUILD BULKHEADS OF ACOUSTICAL CEILING MATERIAL.
 - ALIGN ALL SCOFFITS AND / OR BULKHEADS WITH ADJACENT WALLS, UNLESS NOTED OTHERWISE.
 - PROVIDE SUFFICIENT SUPPORT AND GRID SYSTEMS TO SUPPORT ALL CEILING MOUNTED DEVICES. ALL FIXTURES SHALL BE SUPPORTED AT EACH CORNER.
 - ALL OUTLETS, RECEPTACLES, DEVICES AND COVER PLATES SHALL BE INSTALLED PLUMB AND LEVEL. CROOKED INSTALLATION IS NOT ALLOWED.
 - MISMAINGED HEIF FIXTURES OF ANY TYPE OR AT ANY LOCATION EXPOSED TO VIEW ARE NOT ALLOWED. MISMAINGED FIXTURES SHALL BE ADJUSTED OR REMOVED AND REPLACED IF REQUIRED FOR PROPER ALIGNMENT AT NO ADDITIONAL COST.
 - ALL RECESSED LIGHTING TO BE SEALED AIR-TIGHT, ICC-RATED AND SEALED TO GYPSUM BOARD OR FINISH MATERIAL AS REQUIRED BY THE ICC INTERNATIONAL ENERGY CONSERVATION CODE. ALL RECESSED ELECTRICAL AND PLUMBING FIXTURES SHALL BE ICC COMPLIANT.
 - CONTRACTOR TO COORDINATE ALL OUTLETS, SWITCHES AND POWER FEED WITH CABINETS, PARTITIONS, FINISHES, FIXTURES AND EQUIPMENT.
 - SPRINKLER HEAD TYPES AND FINISHES:
 - EXPOSED STRUCTURE EXPOSED / CHROME.
 - FINISHED CEILING OR WALL: RECESSED AND CONCEALED WITH WHITE COVER PLATE, FLAT AND FLUSH WITH CEILING OR WALL.
 - FINISHED METAL CEILING OR WALL: RECESSED AND CONCEALED WITH COVER PLATE, FLAT AND FLUSH TO MATCH ADJACENT FINISH. CUSTOM COLOR MAY BE REQUESTED. MANUFACTURER'S RANGE DOES NOT PROVIDE MATCH IN THE OPINION OF THE ARCHITECT.
 - PROVIDE SPRINKLER HEADS AND COVERS IN ACCORDANCE WITH SPECIFIED LEVEL OF EXPOSURE (TO VIEW) DESIGN CRITERIA AND AS INDICATED. PROVIDE BRANDED METAL FLEXIBLE SPRINKLER DROPS AT ALL FINISHED CEILING OR WHERE REQUIRED FOR SPECIFIED FINISHES. CENTERING AND ALIGN WITH ARCHITECTURAL FEATURES. PROVIDE ADDITIONAL HEADS BEYOND THAT REQUIRED FOR FINISH COVERED LOCATIONS. COORDINATE WITH ARCHITECTURAL LAYOUT, AND UNIFORM ALIGNMENT WITH OTHER FIXTURES. SUBMIT LAYOUT FOR REVIEW PRIOR TO JAIL REVIEW OR INSTALLATION.
 - PROVIDE FINISHED GRAY ELECTRICAL DEVICES AND STAINLESS STEEL COVER PLATES AT ALL WALLS IN PROJECT. AT ALL OTHER LOCATIONS, SUCH AS CABINETS, RECEPTACLES AND COVER PLATES SHALL MATCH ADJACENT FINISHES, AS DETERMINED AND SELECTED BY THE ARCHITECT FROM MANUFACTURER'S FULL RANGE. FIELD PAINT WHERE REQUIRED.
 - MANTAIN CONTINUOUS FIRE RATED ENCLOSURES AS REQUIRED AT RATED WALLS AND CEILING. PROVIDE FIRE RATED FUTURE COVERS, J-BOYES OR CONSTRUCT GYPSUM BOARD ENCLOSURES WHERE REQUIRED FOR FUTURE OR MEP RUNS TO MAINTAIN CONTINUOUS FIRE RATING.
 - REFER TO MECHANICAL DRAWINGS FOR ADDITIONAL INFORMATION FOR DRYERS AND GRILLE TYPES. REFER TO ELECTRICAL DRAWINGS FOR FUTURE SCHEDULES AND ADDITIONAL INFORMATION. DESIGN INTENT FOR APPEARANCE, TYPE ARRANGEMENT AND LOCATION IS INDICATED ON ARCHITECTURAL DRAWINGS. REPORT DISCREPANCIES TO ARCHITECT FOR CLARIFICATION PRIOR TO ORDERING MATERIALS OR THE START OF ROUGH-IN.
 - LIFE SAFETY DEVICE COLORS GRAY (UNLESS RED IS SPECIFICALLY REQUIRED BY CODE):
 - WHITE AT WHITE CEILING OR WHERE EXPOSED STRUCTURES.
 - OTHER CEILING: NOT ALLOWED, USE WALL MOUNTED.
 - INTERIOR / EXTERIOR WALLS: GRAY.
 - EXPOSED METAL DUCTWORK: ALL METAL DUCTWORK EXPOSED TO VIEW SHALL HAVE UNIFORM AND NEAT SEALANT AND SEAMS. CLEAN EXCESS SEALANT PROVIDE 1/8" FOOT BY 1/8" FOOT HOOK-UP TO ILLUSTRATE ALL SEAMS AND SEALANT TYPES IN PROJECT.
 - EXPOSED STRUCTURE WHEN NOT DIMENSIONED, BUT OCCURS ON OR ADJACENT TO EXPOSED STRUCTURE. LOCATE ITEMS (LIGHT FIXTURES, SPRINKLER PIPING / HEADS, MECHANICAL DUCTS, PIPES, MOUNTING DEVICES, AND ALL ASSOCIATED MOUNTING BRACKETS AND FASTENERS) CENTERED WITHIN SPACE BETWEEN OR ON STRUCTURAL ELEMENTS. MATCH ORIENTATION OF STRUCTURE, UNLESS A SPECIFIC ALTERNATE ARRANGEMENT IS DIMENSIONED AND NOTED. CHANGE ORIENTATION OF ITEMS, IN ACCORDANCE WITH DESIGN CRITERIA FOR PLACEMENT, TO MATCH CHANGES IN ORIENTATION OF STRUCTURE. WHERE MULTIPLE SYSTEMS NEED TO SHARE THE SAME SPACE, CENTER ONE SYSTEM AND ALIGN ADJACENT SYSTEMS IN A UNIFORM AND ORDERLY FASHION.
 - COORDINATION: ALL DEVICES REQUIRED FOR PROJECT MAY NOT BE SHOWN ON ARCHITECTURAL DRAWINGS. REFER TO MECHANICAL, ELECTRICAL, PLUMBING AND TECHNOLOGY DRAWINGS FOR ADDITIONAL DEVICES. ALL DEVICES IN PROJECT SHALL FOLLOW DESIGN CRITERIA FOR PLACEMENT, AS INDICATED, WHETHER OR NOT SHOWN ON ARCHITECTURAL DRAWINGS. REPORT DISCREPANCIES TO ARCHITECT FOR CLARIFICATION PRIOR TO INSTALLATION.
 - COORDINATION DRAWINGS - PROVIDE THE FOLLOWING: PREPARE COORDINATION DRAWINGS TO A SCALE OF 1/4" HIGH BY 1'-0" OR LARGER, DETAILING MAJOR ELEMENTS, COMPONENTS, AND SYSTEMS OF FIRE PROTECTION EQUIPMENT, MATERIALS AND RELATIONS WITH OTHER SYSTEMS. INSTALLATIONS AND BUILDING COMPONENTS. INDICATE LOCATIONS WHERE SPACE IS LIMITED FOR INSTALLATION AND ACCESS AND WHERE SEQUENCING AND COORDINATION OF INSTALLATION ARE IMPORTANT TO THE EFFICIENT FLOW OF THE WORK, INCLUDING, BUT NOT NECESSARILY LIMITED TO THE FOLLOWING:
 - INDICATE THE PROPOSED LOCATIONS OF PIPING, EQUIPMENT, HANGERS, HEAD TYPES AND LOCATIONS, AND MATERIALS.
 - CLEARANCES FOR INSTALLING AND MAINTAINING INSULATION.



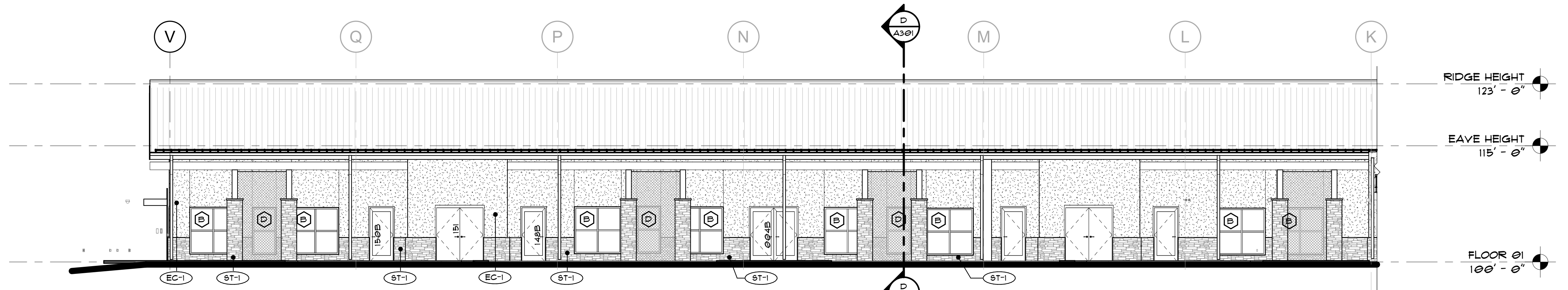
A FIRST FLOOR REFLECTED CEILING PLAN
1/8" = 1'-0"

REFLECTED CEILING PLAN LEGEND

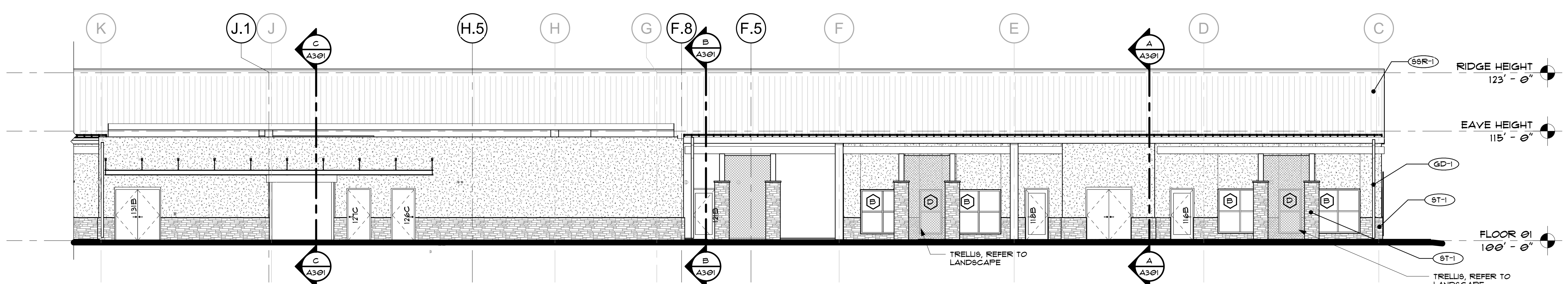
NOTE: REFER TO STRUCTURAL, ELECTRICAL AND MECHANICAL DRAWINGS FOR ADDITIONAL INFORMATION.



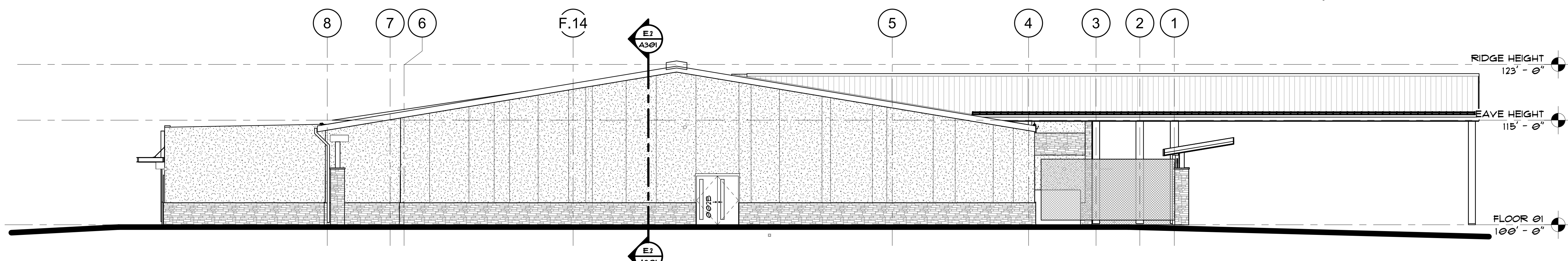
F EAST ELEVATION - AREA B
1/8" = 1'-0"



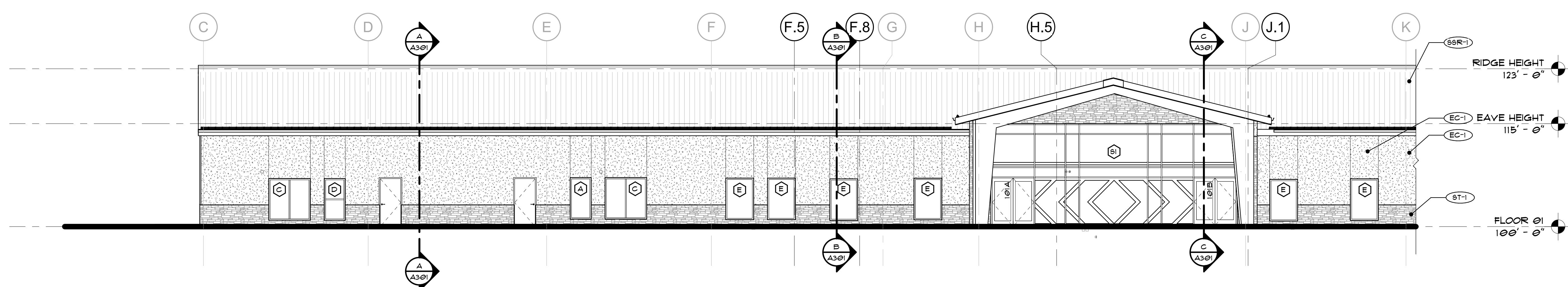
E NORTH ELEVATION - AREA B
1/8" = 1'-0"



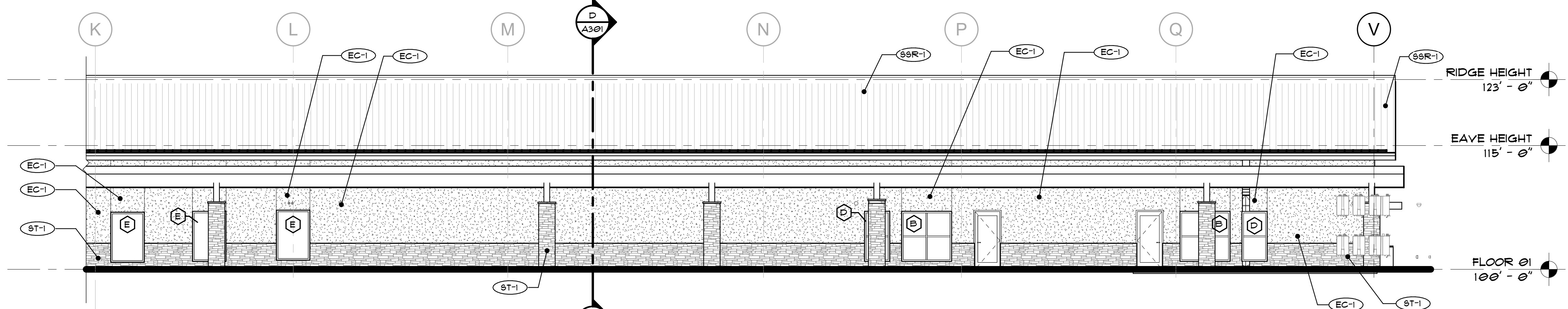
D NORTH ELEVATION - AREA A
1/8" = 1'-0"



C WEST ELEVATION - AREA A
1/8" = 1'-0"



B SOUTH ELEVATION - AREA A
1/8" = 1'-0"



A SOUTH ELEVATION - AREA B
1/8" = 1'-0"

EXTERIOR MATERIAL LEGEND

ROOFING SYSTEM

- (SSR-1) STANDING SEAM METAL ROOF SYSTEM
- (MR-1) SINGLE-PLY ROOFING MEMBRANE SYSTEM

MANUFACTURED STONE MASONRY VENEER - ST

- (ST-1) MANUFACTURED STONE MASONRY VENEER
- (ST-2) CAST STONE CAP

DRAINABLE EXTERIOR INSULATION FINISH SYSTEM - EIFS

- (EFS-1) DRAINABLE EXTERIOR INSULATION FINISH SYSTEM, FINAL COLOR TO BE SELECTED BY OWNER/ARCHITECT FROM MANUFACTURER'S STANDARD RANGE
- (EFS-2) DRAINABLE EXTERIOR INSULATION FINISH SYSTEM, FINAL COLOR TO BE SELECTED BY OWNER/ARCHITECT FROM MANUFACTURER'S STANDARD RANGE
- (EFS-3) DRAINABLE EXTERIOR INSULATION FINISH SYSTEM, FINAL COLOR TO BE SELECTED BY OWNER/ARCHITECT FROM MANUFACTURER'S STANDARD RANGE

PRE-FINISHED GUTTER AND DOWNSPOUT - GP

- (GP-1) PRE-FINISHED GUTTER AND DOWNSPOUT, REFER TO CIVIL FOR TIE IN LOCATIONS

EXTERIOR STRUCTURE PAINT - PT

- (SP-1) EXTERIOR PAINT, BASIS OF DESIGN THEBEC SERIES APPROPRIATE FOR APPLICATION, COLOR: XXXX

EXTERIOR CLADDING - EC

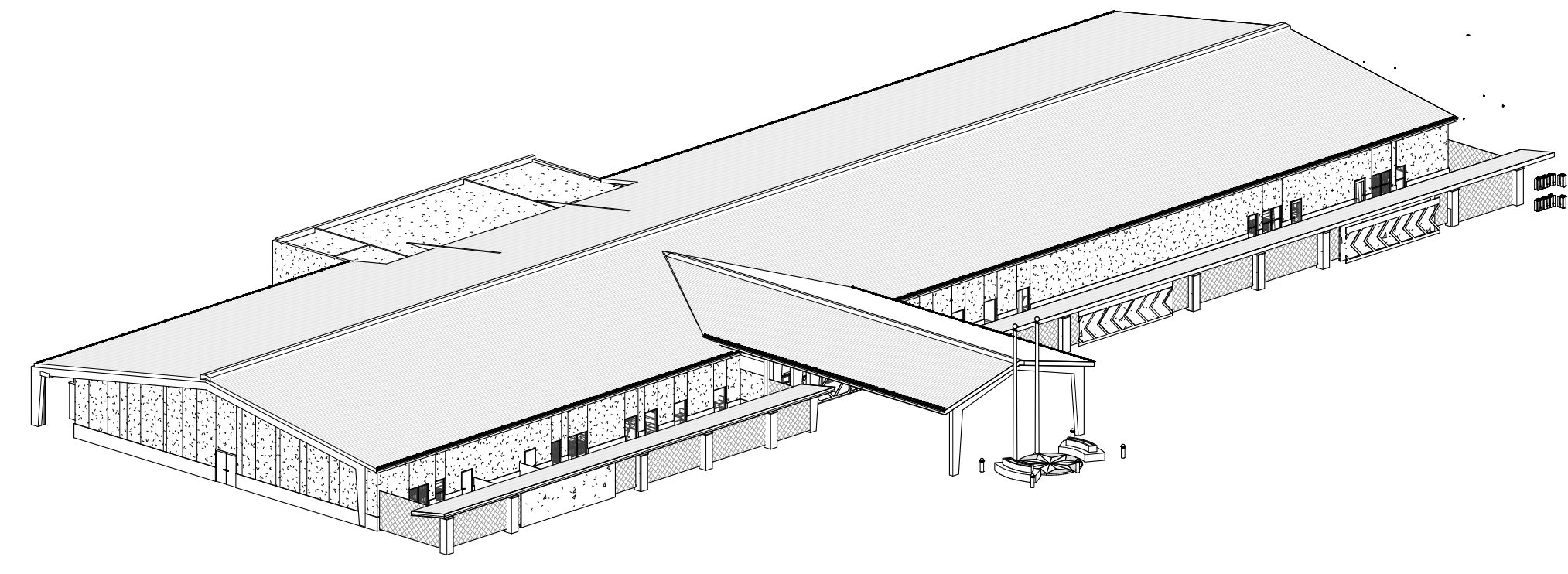
- (EC-1) EXTERIOR CLADDING, BASIS OF DESIGN XXXX COLOR: XXXX

OTHER ITEMS

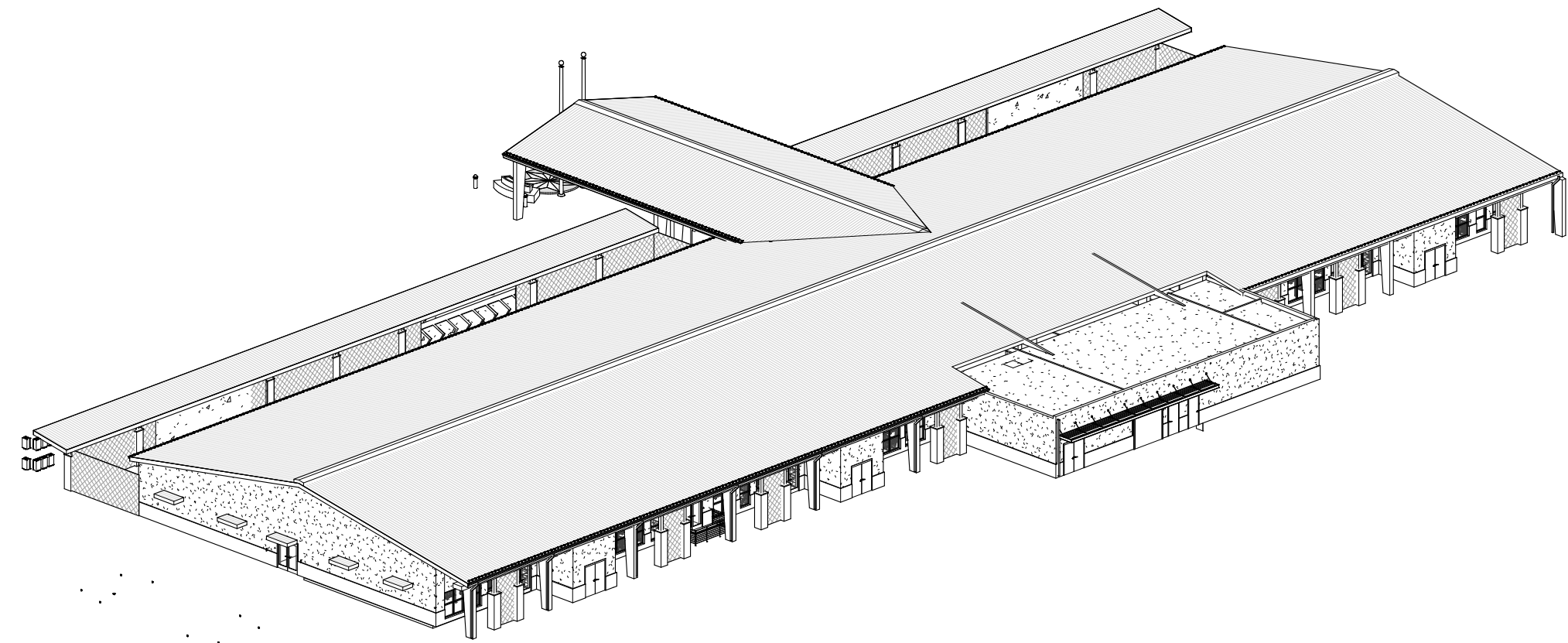
- (GL) GLAZING SYSTEM, REFER TO A62 FOR MORE INFORMATION
- (L) LIGHTING, REFER TO ELECTRICAL
- (LO) LOUVER, REFER TO MECHANICAL
- (WV) WALL VENT, REFER TO PLUMBING
- (PMD) PREFINISHED METAL DOWNSPOUT, SIZED PER SMACNA GUIDELINES, REFER TO CIVIL FOR TIE IN LOCATIONS
- (RJ) REVEAL JOINT
- (C) SECURITY CAMERA

- EXTERIOR ELEVATION GENERAL NOTES**
- REFER TO SHEET A62 FOR WINDOW TYPES
 - REFER TO SHEET A6XX FOR DOOR SCHEDULE
 - REFER TO A390 SERIES SHEETS FOR EXTERIOR WALL SECTIONS
 - ALL EXTERIOR DIMENSIONS ARE FROM FACE OF EXTERIOR FINISH, UNLESS NOTED OTHERWISE
 - MASONRY DIMENSIONS ARE NOMINAL, UNLESS NOTED OTHERWISE
 - REFER TO CIVIL DRAWINGS FOR FINISH GRADE ELEVATIONS
 - DETAILS ON EXTERIOR ELEVATIONS ARE GENERAL IN NATURE AND FOR ILLUSTRATIVE PURPOSES ONLY. REFER TO WALL DETAILS AND SECTIONS FOR DETAILED INFORMATION CONCERNING EXTERIOR CONSTRUCTION
 - REFER TO ELECTRICAL FOR ADDITIONAL INFORMATION AT EXTERIOR LIGHTING
 - PROVIDE CONTROL JOINTS PER MANUFACTURER'S SPECIFICATIONS
 - PROVIDE WATERTIGHT SEAL AT ALL SIGNAGE ATTACHMENT AND POWER FEED LOCATIONS

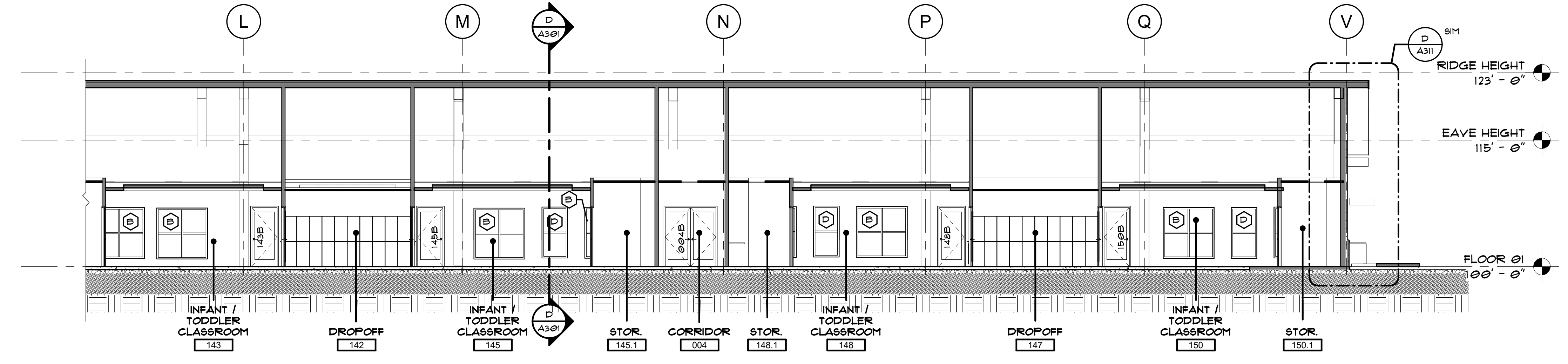
BUILDING SECTIONS GENERAL NOTES
 1. BUILDING SECTIONS ARE FOR DIAGRAMMATIC PURPOSES ONLY.



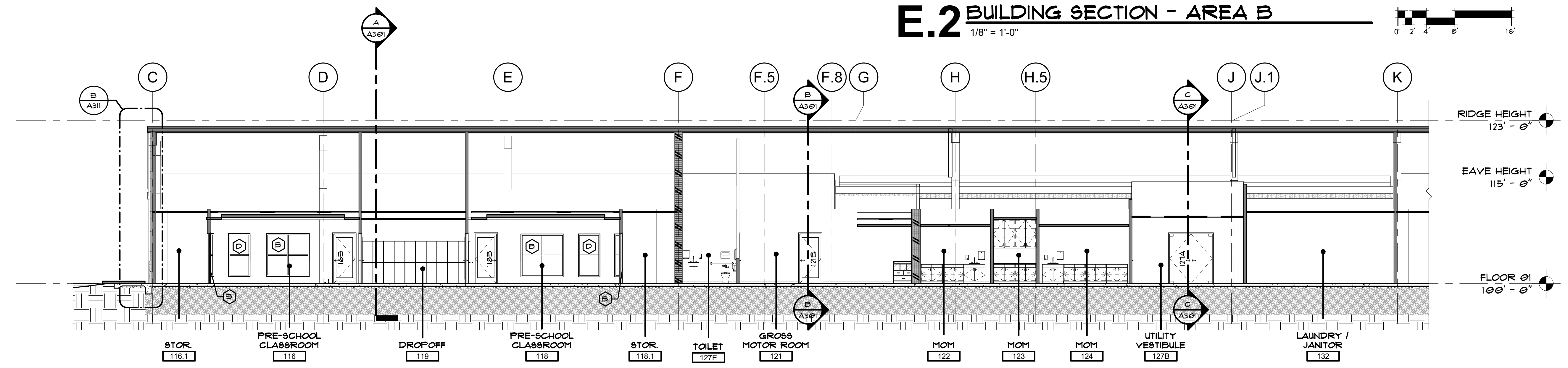
OVERALL AXONOMETRIC - SOUTH WEST



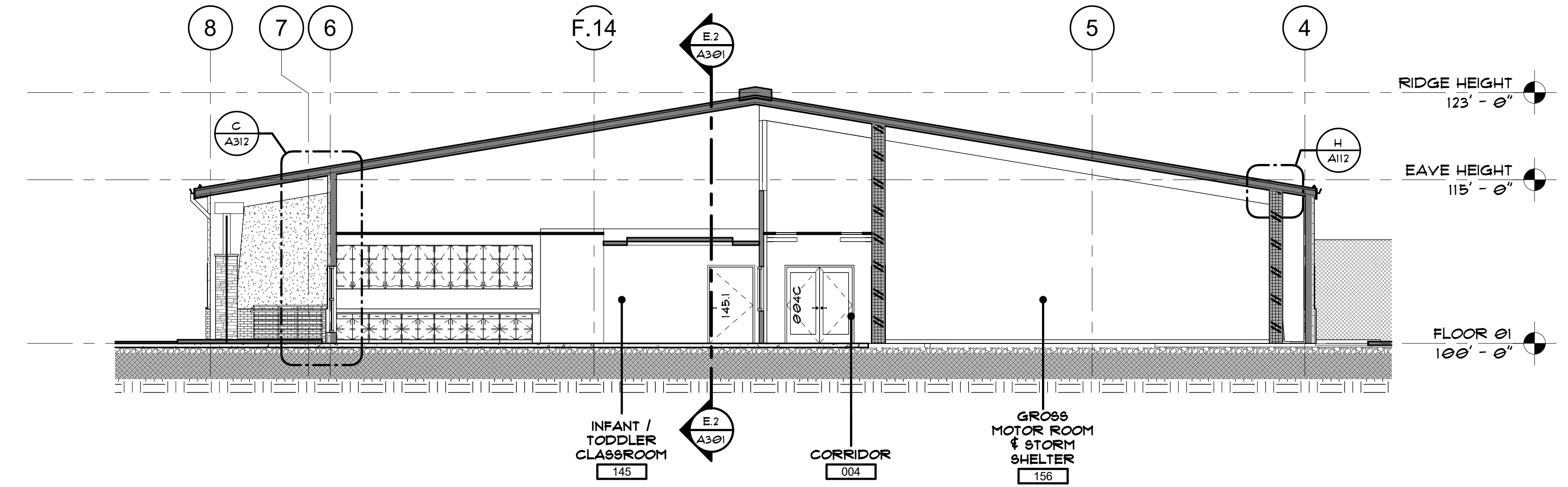
OVERALL AXONOMETRIC - NORTH EAST



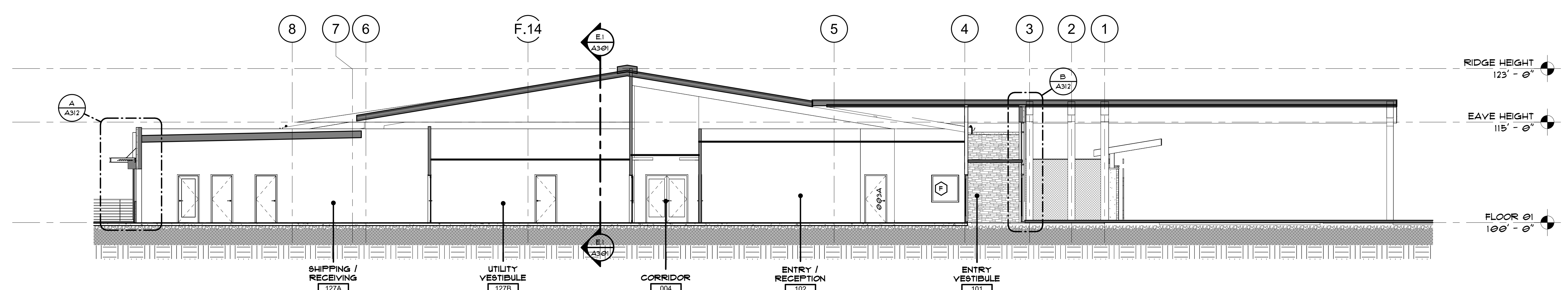
E.2 BUILDING SECTION - AREA B
 1/8" = 1'-0"



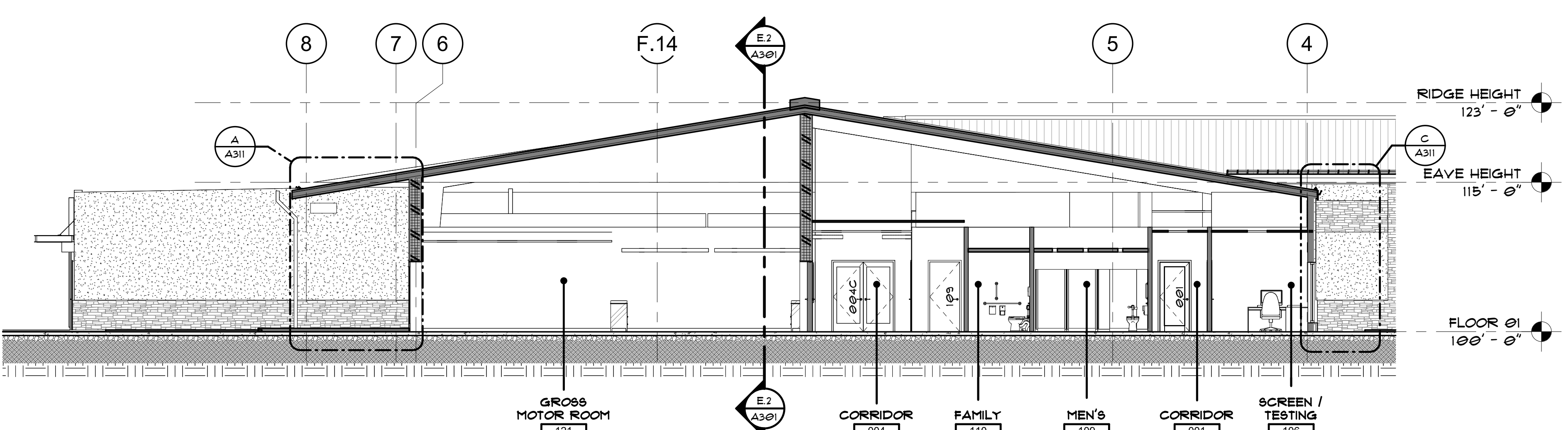
E.1 BUILDING SECTION - AREA A
 1/8" = 1'-0"



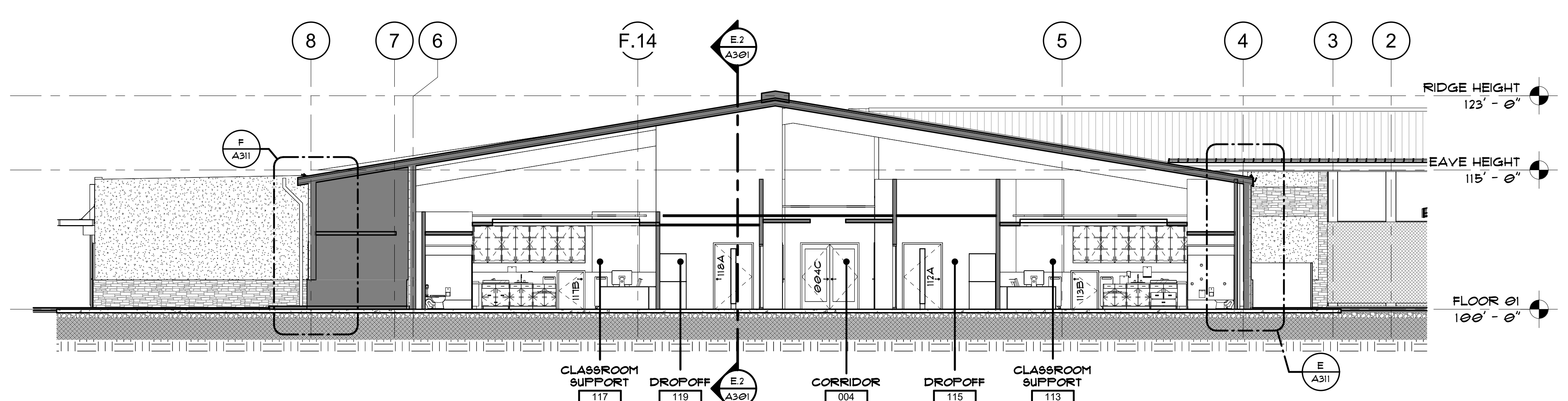
D BUILDING SECTION
 1/8" = 1'-0"



C BUILDING SECTION
 1/8" = 1'-0"



B BUILDING SECTION
 1/8" = 1'-0"



A BUILDING SECTION
 1/8" = 1'-0"



INTERIM REVIEW ONLY
 THESE DOCUMENTS ARE INCOMPLETE
 AND ARE NOT INTENDED TO BE USED
 FOR PERMIT, BIDDING OR
 CONSTRUCTION.
 3/13/2024 4:42:43 PM

CHEROKEE NATION CATOOSA CHILD DEVELOPMENT CENTER
 CATOOSA, OKLAHOMA



20230011
 PROJECT NUMBER
TBD
 ISSUE DATE
CM PACKAGE
 ISSUE

OTHER ISSUE DATES:
 NO. DESCRIPTION DATE

BUILDING SECTIONS

A301