

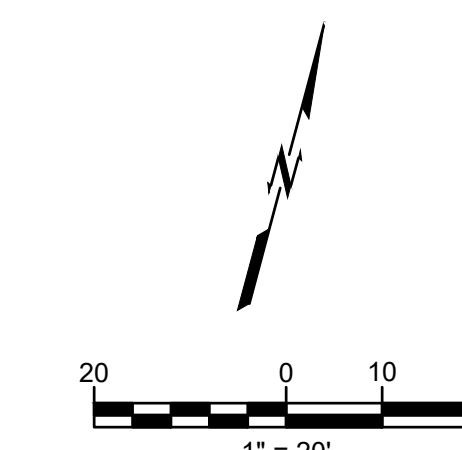
- GENERAL SITE NOTES:**
- ALL WORK AND MATERIALS SHALL COMPLY WITH ALL MUNICIPAL REGULATIONS AND CODES, WHICHEVER IS MORE STRINGENT.
 - ALL WORK AND MATERIALS SHALL COMPLY WITH O.S.H.A. STANDARDS.
 - CONTRACTOR SHALL BE RESPONSIBLE FOR ALL RELOCATIONS, INCLUDING BUT NOT LIMITED TO, ALL UTILITIES, STORM DRAINAGE, SIGNS, TRAFFIC SIGNALS & POLES, ETC. AS REQUIRED. ALL WORK SHALL BE IN ACCORDANCE WITH GOVERNING AUTHORITIES' SPECIFICATIONS AND SHALL BE APPROVED BY SUCH. ALL COST SHALL BE INCLUDED IN BASE BID.
 - REFER TO LANDSCAPE PLANS FOR GRASS, TREES, AND PLANTED MATERIALS.
 - ALL DIMENSIONS AND COORDINATES ARE FROM BACK (FACE) OF CURB UNLESS SHOWN OTHERWISE.
 - RADI = 'X-XX' UNLESS OTHERWISE INDICATED.

- GENERAL PAVING NOTES:**
- ALL MATERIALS, EXECUTION, AND TESTING TO CONFORM TO A.H.J. REQUIREMENTS (I.E. LOCAL OR STATE DOT STANDARDS AND SPECIFICATIONS).
 - ALL PAVING AND EARTHWORK OPERATIONS SHALL CONFORM TO THE RECOMMENDATIONS IN THE GEOTECHNICAL REPORT.
 - CONTRACTOR TO PROVIDE PRODUCT DATA SUBMITTALS INCLUDING, BUT NOT LIMITED TO, DESIGN MIXES, MATERIAL CERTIFICATES, AND MATERIAL TEST REPORTS FOR MATERIALS AND PRODUCTS ASSOCIATED WITH PAVING AND PAVEMENT MARKING OPERATIONS.
 - CONTRACTOR SHALL DEVELOP AND IMPLEMENT PROPER TRAFFIC CONTROL IN CONFORMANCE WITH THE LATEST REVISION OF THE MUTCD. ACCESS FOR EMERGENCY VEHICLES AND LOCAL TRAFFIC SHALL BE MAINTAINED AT ALL TIMES DURING CONSTRUCTION.
 - PAVEMENT SUBGRADE SHALL BE PREPARED IN ACCORDANCE WITH THE RECOMMENDATIONS IN THE GEOTECHNICAL REPORT AND TO THE GRADES AND ELEVATIONS REQUIRED BY THE CONSTRUCTION DOCUMENTS.
 - PAVEMENT CONTRACTOR TO INSPECT PAVEMENT SUBGRADE AND CORRECT ANY DEFICIENCIES PRIOR TO PAVING OPERATIONS.
 - CONTRACTOR TO COORDINATE CONSTRUCTION TESTING UNLESS OTHERWISE INDICATED IN THE CONTRACT DOCUMENTS.
 - THE PAVEMENT SECTIONS SHOWN IN DETAIL XX / CXXX ARE SHOWN FOR REFERENCE AND WERE PROVIDED BY (GEOTECHNICAL ENGINEER NAME) BASED ON SITE SPECIFIC CONDITIONS AS OUTLINED IN THEIR REPORT DATED XX.XX.XXXX. ANY QUESTIONS REGARDING THE SUITABILITY OF THESE OR ALTERNATE PAVEMENT SECTIONS, SPECIFIC PAVEMENT MAINTENANCE REQUIREMENTS, OR POTENTIAL PAVEMENT LIFE SHOULD BE DIRECTED TO (GEOTECHNICAL ENGINEER NAME) AS THIS IS BEYOND WALLACE'S SCOPE OF SERVICES FOR THIS PROJECT.

- ASPHALT PAVEMENT:**
- CONSTRUCT JOINTS TO ENSURE A CONTINUOUS BOND BETWEEN ADJOINING PAVEMENT SECTIONS. OFFSET LONGITUDINAL JOINTS, IN SUCCESSIVE COURSES, A MINIMUM OF 6 INCHES AND TRANSVERSE JOINTS A MINIMUM OF 24 INCHES.
 - WHERE DIFFERENT THICKNESS PAVEMENTS ABUT, PROVIDE A THICKENED EDGE ON THE THINNER PAVEMENT SECTION, WHICH TRANSITIONS TO THE THICKER PAVEMENT DEPTH ACROSS FOUR FEET.
 - UNIFORM DENSITY REQUIREMENTS:
 - AVERAGE DENSITY: 98 PERCENT OF REFERENCE LABORATORY DENSITY ACCORDING TO ASTM D 6927 BUT NOT LESS THAN 94 PERCENT OR GREATER THAN 100 PERCENT, OR
 - AVERAGE DENSITY: 92 PERCENT OF REFERENCE MAXIMUM THEORETICAL DENSITY ACCORDING TO ASTM D 2041 BUT NOT LESS THAN 90 PERCENT OR GREATER THAN 98 PERCENT.
 - INSTALLATION TOLERANCES:
 - PAVEMENT THICKNESS: BASE COURSE PLUS OR MINUS 1/2 INCH; SURFACE COURSE 1/4 INCH.
 - PAVEMENT SMOOTHNESS: BASE COURSE 1/4 INCH IN 10 FEET; SURFACE COURSE 1/8 INCH IN 10 FEET.
 - CONCRETE PLACEMENT TO CONFORM TO ACI 301.3 / 306 / 330 REQUIREMENTS.
 - CONCRETE MATERIAL:
 - 28 DAY COMPRESSIVE STRENGTH: 4000 PSI MINIMUM
 - MAXIMUM W/C RATIO AT POINT OF PLACEMENT: 0.45

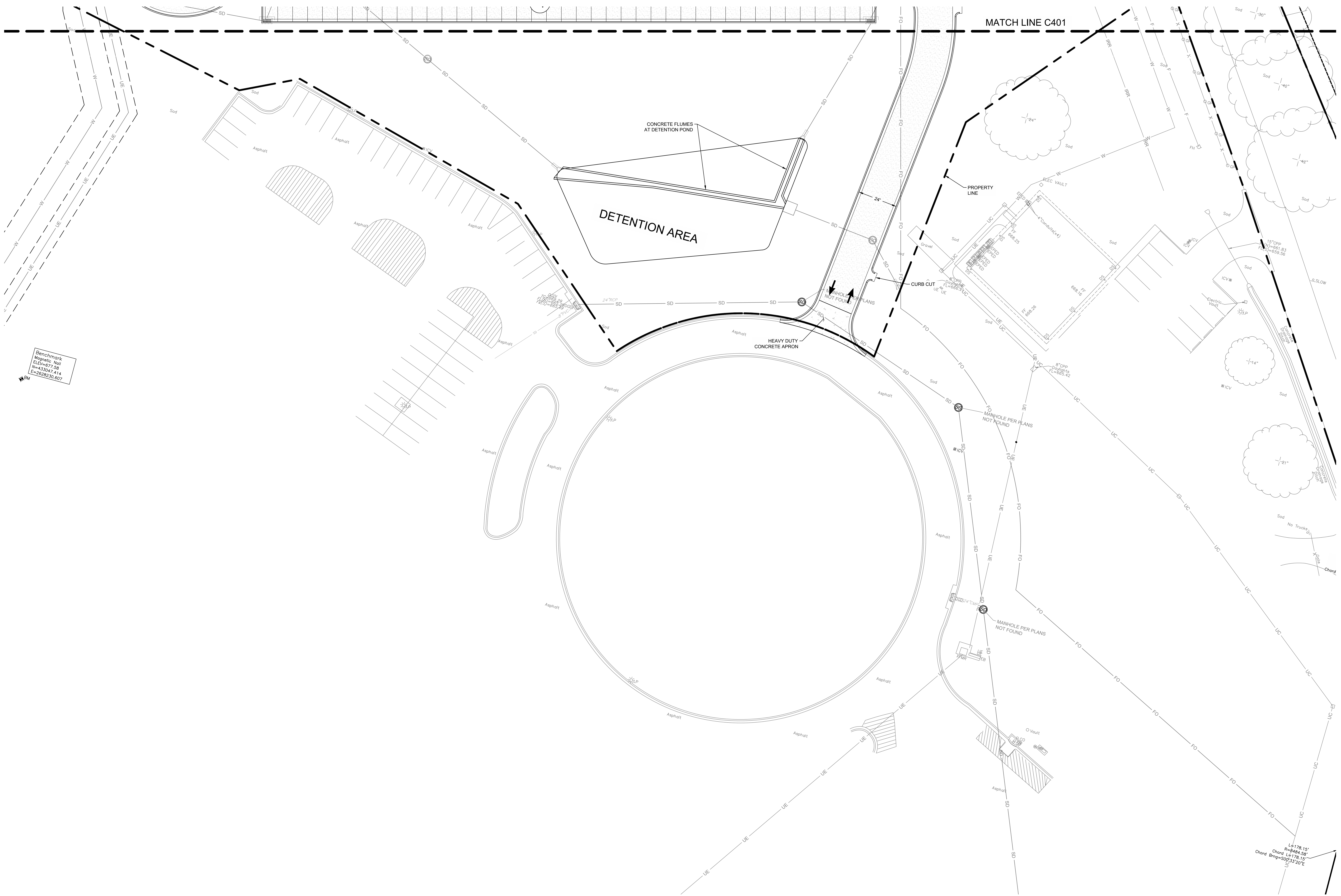
- SLUMP: 4 INCHES PLUS OR MINUS 1 INCH
- AIR CONTENT: 6 PERCENT PLUS OR MINUS 1-1/2 PERCENT
- STEEL:
 - GRADE 60
 - COMPLY WITH ORSI'S 'MANUAL OF STANDARD PRACTICE' FOR FABRICATION, PLACEMENT, AND SUPPORT.
- JOINT SPACING:
 - JOINT SPACING SHALL NOT EXCEED 24 TO 30 TIMES THE PAVEMENT THICKNESS (E.G. 0.5" THICK CONCRETE x 30 = 15' MAXIMUM JOINT SPACING) WITH A MAXIMUM SPACING OF 15 FEET.
 - LAY OUT JOINTS TO FORM SQUARE PANELS. WHEN THIS IS NOT PRACTICAL, RECTANGULAR PANELS CAN BE USED, BUT THE LENGTH SHALL NOT BE MORE THAN 25% LONGER THAN THE WIDTH (E.G. A 15' LONG PANEL CANNOT BE WIDER THAN 12').
 - CONTRACTOR TO SUBMIT A JOINT LAYOUT PLAN FOR REVIEW AND APPROVAL PRIOR TO COMMENCING PAVING OPERATIONS. CONTRACTOR TO TAKE INTO ACCOUNT REVIEW TIME AND CHANGES PER ANY COMMENTS WHEN SCHEDULING THE SUBMISSION OF THE JOINT LAYOUT PLAN.
 - REINFORCEMENT OF IRREGULARLY SHAPED PANELS OR MISMATCHED JOINTS:
 - ON PANELS WITH RADIUS ON PANELS THAT TAPER TO A SHARP ANGLE, AND/OR WHEN THE LENGTH TO WIDTH RATIO EXCEEDS 1.25, PROVIDE A MINIMUM OF 0.05

- PERCENT STEEL IN BOTH DIRECTIONS ACROSS THE ENTIRE PANEL.
- WHERE JOINT PATTERNS OF ABUTTING PAVEMENTS DO NOT MATCH AND ARE NOT SEPARATED BY AN EXPANSION JOINT, PROVIDE A MINIMUM OF 0.05 PERCENT STEEL IN THE PAVEMENT OPPOSITE OF THE MISMATCHED JOINT FOR A DISTANCE OF THREE FEET BACK FROM THE JOINT ALONG THE FULL WIDTH OF THE PANEL.
- WHERE DIFFERENT THICKNESS PAVEMENTS ABUT, PROVIDE A THICKENED EDGE ON THE THINNER PAVEMENT SECTION WHICH TRANSITIONS TO THE THICKER PAVEMENT DEPTH ACROSS FOUR FEET.
- PROVIDE MEDIUM TO FINE TEXTURED BROOM FINISH UNLESS OTHERWISE INDICATED ON THE PLANS.
- INSTALLATION TOLERANCES:
 - ELEVATION: 1/4 INCH
 - THICKNESS: PLUS 3/8 INCH, MINUS 1/4 INCH
 - SURFACE: 1/4 INCH IN 10 FEET
- PAVEMENT MARKINGS:
 - ALLOW PAVING TO AGE A MINIMUM OF 30 DAYS BEFORE STARTING PAVEMENT MARKING OPERATIONS.
 - PAVEMENT MARKING PAINT SHALL BE ACRYLIC, WATERBORNE EMULSION, LEAD AND CHROMATE FREE, READY MIXED, COMPLYING WITH FS TT-P-1952, TYPE II, WITH A DRYING TIME OF LESS THAN THREE MINUTES.
 - COLOR AS INDICATED.



CAUTION
NOTICE TO CONTRACTOR

THE CONTRACTOR IS SPECIFICALLY CAUTIONED THE LOCATION AND ELEVATION OF EXISTING UTILITIES AS SHOWN ON THESE PLANS ARE BASED ON RECORDS OF THE VARIOUS UTILITY COMPANIES AND MEASUREMENTS TAKEN IN THE FIELD. THE INFORMATION IS NOT TO BE RELIED ON AS BEING EXACT OR COMPLETE. THE CONTRACTOR MUST CALL THE LOCAL UTILITY LOCATION CENTER AT LEAST 72 HOURS BEFORE ANY EXCAVATION TO REQUEST EXACT FIELD LOCATIONS OF THE UTILITIES.



Benchmark
Waypoint, No. 00
ELEVATION: 72.28
N=433047.414
E=2628230.657

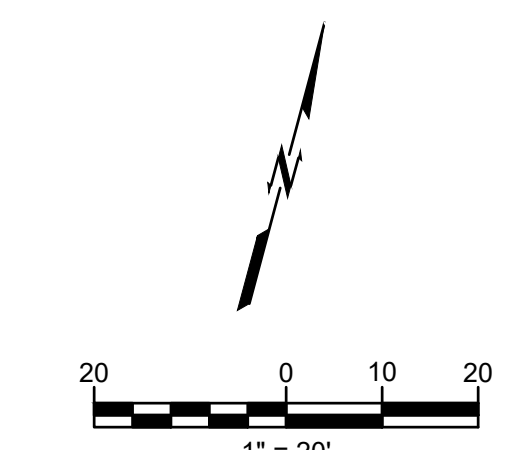
- GENERAL SITE NOTES:**
- ALL WORK AND MATERIALS SHALL COMPLY WITH ALL MUNICIPAL REGULATIONS AND CODES, WHICHEVER IS MORE STRINGENT.
 - ALL WORK AND MATERIALS SHALL COMPLY WITH O.S.H.A. STANDARDS.
 - CONTRACTOR SHALL BE RESPONSIBLE FOR ALL RELOCATIONS, INCLUDING BUT NOT LIMITED TO, ALL UTILITIES, STORM DRAINAGE, SIGNS, TRAFFIC SIGNALS & POLES, ETC. AS REQUIRED. ALL WORK SHALL BE IN ACCORDANCE WITH GOVERNING AUTHORITIES' SPECIFICATIONS AND SHALL BE APPROVED BY SUCH. ALL COST SHALL BE INCLUDED IN BASE BID.
 - REFER TO LANDSCAPE PLANS FOR GRASS, TREES, AND PLANTED MATERIALS.
 - ALL DIMENSIONS AND COORDINATES ARE FROM BACK (FACE) OF CURB UNLESS SHOWN OTHERWISE.
 - RADIUS = 'X'-XX' UNLESS OTHERWISE INDICATED.

- GENERAL PAVING NOTES:**
- ALL MATERIALS, EXECUTION, AND TESTING TO CONFORM TO AHJ REQUIREMENTS (I.E. LOCAL OR STATE DOT STANDARDS AND SPECIFICATIONS).
 - ALL PAVING AND EARTHWORK OPERATIONS SHALL CONFORM TO THE RECOMMENDATIONS IN THE GEOTECHNICAL REPORT.
 - CONTRACTOR TO PROVIDE PRODUCT DATA SUBMITTALS INCLUDING, BUT NOT LIMITED TO, DESIGN MIXES, MATERIAL CERTIFICATES, AND MATERIAL TEST REPORTS FOR MATERIALS AND PRODUCTS ASSOCIATED WITH PAVING AND PAVEMENT MARKING OPERATIONS.
 - CONTRACTOR SHALL DEVELOP AND IMPLEMENT PROPER TRAFFIC CONTROL IN CONFORMANCE WITH THE LATEST REVISION OF THE MUTCD. ACCESS FOR EMERGENCY VEHICLES AND LOCAL TRAFFIC SHALL BE MAINTAINED AT ALL TIMES DURING CONSTRUCTION.
 - PAVEMENT SUBGRADE SHALL BE PREPARED IN ACCORDANCE WITH THE RECOMMENDATIONS IN THE GEOTECHNICAL REPORT AND TO THE GRADES AND ELEVATIONS REQUIRED BY THE CONSTRUCTION DOCUMENTS.
 - PAVEMENT CONTRACTOR TO INSPECT PAVEMENT SUBGRADE AND CORRECT ANY DEFICIENCIES PRIOR TO PAVING OPERATIONS.
 - CONTRACTOR TO COORDINATE CONSTRUCTION TESTING UNLESS OTHERWISE INDICATED IN THE CONTRACT DOCUMENTS.
 - THE PAVEMENT SECTIONS SHOWN IN DETAIL XX / CXXX ARE SHOWN FOR REFERENCE AND WERE PROVIDED BY (GEOTECHNICAL ENGINEER NAME) BASED ON SITE SPECIFIC CONDITIONS AS OUTLINED IN THEIR REPORT DATED XX.XX.XXXX. ANY QUESTIONS REGARDING THE SUITABILITY OF THESE OR ALTERNATE PAVEMENT SECTIONS, SPECIFIC PAVEMENT MAINTENANCE REQUIREMENTS, OR POTENTIAL PAVEMENT LIFE SHOULD BE DIRECTED TO (GEOTECHNICAL ENGINEER NAME), AS THIS IS BEYOND WALLACE'S SCOPE OF SERVICES FOR THIS PROJECT.

- ASPHALT PAVEMENT:**
- CONSTRUCT JOINTS TO ENSURE A CONTINUOUS BOND BETWEEN ADJOINING PAVEMENT SECTIONS. OFFSET LONGITUDINAL JOINTS, IN SUCCESSIVE COURSES, A MINIMUM OF 6 INCHES AND TRANSVERSE JOINTS A MINIMUM OF 24 INCHES.
 - WHERE DIFFERENT THICKNESS PAVEMENTS ABUT, PROVIDE A THICKENED EDGE ON THE THINNER PAVEMENT SECTION, WHICH TRANSITIONS TO THE THICKER PAVEMENT DEPTH ACROSS FOUR FEET.
 - UNIFORM DENSITY REQUIREMENTS:
 - AVERAGE DENSITY: 98 PERCENT OF REFERENCE LABORATORY DENSITY ACCORDING TO ASTM D 8927 BUT NOT LESS THAN 94 PERCENT OR GREATER THAN 100 PERCENT, OR
 - AVERAGE DENSITY: 92 PERCENT OF REFERENCE MAXIMUM THEORETICAL DENSITY ACCORDING TO ASTM D 2041 BUT NOT LESS THAN 90 PERCENT OR GREATER THAN 96 PERCENT.
 - INSTALLATION TOLERANCES:
 - PAVEMENT THICKNESS: BASE COURSE PLUS OR MINUS 1/2 INCH; SURFACE PLUS 1/8 INCH.
 - PAVEMENT SMOOTHNESS: BASE COURSE 1/4 INCH IN 10 FEET; SURFACE COURSE 1/8 INCH IN 10 FEET.
- CONCRETE PAVEMENT:**
- CONCRETE PLACEMENT TO CONFORM TO ACI 301.3 / 306 / 330 REQUIREMENTS.
 - CONCRETE MATERIAL:
 - 28 DAY COMPRESSIVE STRENGTH: 4000 PSI MINIMUM
 - MAXIMUM W/C RATIO AT POINT OF PLACEMENT: 0.45

- SUMP: 4 INCHES PLUS OR MINUS 1/2 INCH
- AIR CONTENT: 8 PERCENT PLUS OR MINUS 1-1/2 PERCENT
- STEEL:
 - GRADE 60
 - COMPLY WITH CRSI'S 'MANUAL OF STANDARD PRACTICE' FOR FABRICATION, PLACEMENT, AND SUPPORT.
- JOINTS:
 - FORM CONSTRUCTION, ISOLATION, AND CONTRACTION JOINTS WITH FACES PERPENDICULAR TO SURFACE PLANE OF CONCRETE. WHEN JOINING EXISTING PAVING, PLACE JOINTS TO ALIGN WITH PREVIOUSLY PLACED JOINTS UNLESS OTHERWISE INDICATED.
 - FORM ISOLATION JOINTS OF PREFORMED JOINT-FILLER STRIPS ABUTTING LIGHT STANDARD FOUNDATIONS, MANHOLES, INLETS, STRUCTURES, OR OTHER FIXED OBJECTS. EXTEND JOINT FILLERS THE FULL WIDTH AND DEPTH OF PAVEMENT. CONTRACTION JOINT DEPTH TO BE 1/4 OF THE TOTAL CONCRETE THICKNESS. JOINTS SHOULD EXTEND THROUGH ADJACENT CURB AND GUTTER.
- JOINT SPACING:
 - JOINT SPACING SHALL NOT EXCEED 24 TO 30 TIMES THE PAVEMENT THICKNESS (E.G. 0.5" THICK CONCRETE x 30 = 15' MAXIMUM JOINT SPACING) WITH A MAXIMUM SPACING OF 15 FEET.
 - LAY OUT JOINTS TO FORM SQUARE PANELS. WHEN THIS IS NOT PRACTICAL, RECTANGULAR PANELS CAN BE USED, BUT THE LENGTH SHALL NOT BE MORE THAN 25% LONGER THAN THE WIDTH (E.G. A 16' LONG PANEL CANNOT BE WIDER THAN 12').
- CONTRACTOR TO SUBMIT A JOINT LAYOUT PLAN FOR REVIEW AND APPROVAL PRIOR TO COMMENCING PAVING OPERATIONS. CONTRACTOR TO TAKE INTO ACCOUNT REVIEW TIME AND CHANGES PER ANY COMMENTS WHEN SCHEDULING THE SUBMISSION OF THE JOINT LAYOUT PLAN.
- REINFORCEMENT OF IRREGULARLY SHAPED PANELS OR MISMATCHED JOINTS:
 - ON PANELS WITH RAIL ON PANELS THAT TAPER TO A SHARP ANGLE AND/OR WHEN THE LENGTH TO WIDTH RATIO EXCEEDS 1.25, PROVIDE A MINIMUM OF 0.05

- PERCENT STEEL IN BOTH DIRECTIONS ACROSS THE ENTIRE PANEL.
 - WHERE JOINT PATTERNS OF ABUTTING PAVEMENTS DO NOT MATCH AND ARE NOT SEPARATED BY AN EXPANSION JOINT, PROVIDE A MINIMUM OF 0.05 PERCENT STEEL IN THE PAVEMENT OPPOSITE OF THE MISMATCHED JOINT FOR A DISTANCE OF THREE FEET BACK FROM THE JOINT ALONG THE FULL WIDTH OF THE PANEL.
 - WHERE DIFFERENT THICKNESS PAVEMENTS ABUT, PROVIDE A THICKENED EDGE ON THE THINNER PAVEMENT SECTION WHICH TRANSITIONS TO THE THICKER PAVEMENT DEPTH ACROSS FOUR FEET.
 - PROVIDE MEDIUM TO FINE TEXTURED BROOM FINISH UNLESS OTHERWISE INDICATED ON THE PLANS.
 - INSTALLATION TOLERANCES:
 - ELEVATION: 1/4 INCH
 - THICKNESS: PLUS 3/8 INCH, MINUS 1/4 INCH
 - SURFACE: 1/4 INCH IN 10 FEET
- PAVEMENT MARKINGS:**
- ALLOW PAVING TO AGE A MINIMUM OF 30 DAYS BEFORE STARTING PAVEMENT MARKING OPERATIONS.
 - PAVEMENT MARKING PAINT SHALL BE ACRYLIC, WATERBORNE EMULSION, LEAD AND CHROMATE FREE, READY MIXED, COMPLYING WITH FS TT-P-1952, TYPE II, WITH A DRYING TIME OF LESS THAN THREE MINUTES.
 - COLOR AS INDICATED.



CAUTION
NOTICE TO CONTRACTOR

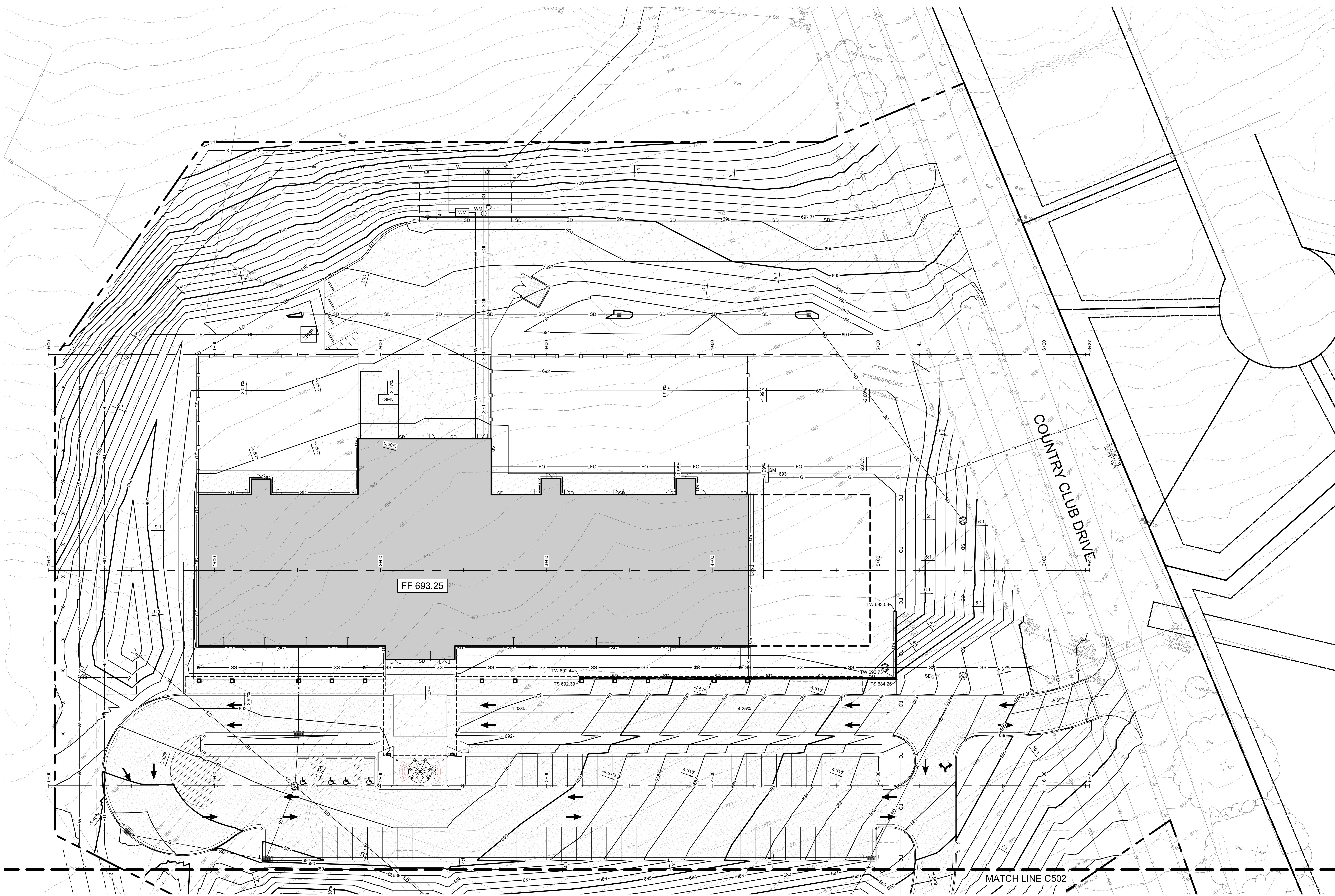
THE CONTRACTOR IS SPECIFICALLY CAUTIONED THE LOCATION AND ELEVATION OF EXISTING UTILITIES AS SHOWN ON THESE PLANS ARE BASED ON RECORDS OF THE VARIOUS UTILITY COMPANIES AND MEASUREMENTS TAKEN IN THE FIELD. THE INFORMATION IS NOT TO BE RELIED ON AS BEING EXACT OR COMPLETE. THE CONTRACTOR MUST CALL THE LOCAL UTILITY LOCATION CENTER AT LEAST 72 HOURS BEFORE ANY EXCAVATION TO REQUEST EXACT FIELD LOCATIONS OF THE UTILITIES.

BLUE RIVER PROJECT NUMBER:
20230011
ISSUE DATE:
03/14/2024
ISSUE:
CM PACKAGE

OTHER ISSUE DATES:
NO. DESCRIPTION DATE

SHEET NAME:
SITE PLAN - SOUTH

SHEET NUMBER:
C402



GENERAL GRADING NOTES:

- CONSTRUCTION SHALL COMPLY WITH ALL APPLICABLE GOVERNING CODES. SITE GRADING SHALL NOT PROCEED UNTIL EROSION CONTROL MEASURES HAVE BEEN INSTALLED, INSPECTED, AND APPROVED BY LOCAL AUTHORITIES.
- ALL BENCHMARKS, CONTROL POINTS, PROPERTY MARKERS, AND RIGHT-OF-WAY MONUMENTS DISTURBED OR DESTROYED SHALL BE RESET UNDER THE SUPERVISION OF A PROFESSIONAL LAND SURVEYOR LICENSED IN THE STATE OF OKLAHOMA. ALL SURVEYING COSTS SHALL BE THE CONTRACTOR'S.
- THE CONTRACTOR SHALL VERIFY UTILITY LOCATIONS BEFORE EXCAVATING.
- TOPSOIL SHALL BE STRIPPED TO A DEPTH WHERE SOIL IS FREE OF ROOTS AND VEGETATION.
- REFERENCE GEOTECHNICAL ENGINEERING REPORT BY DATED FOR COMPLETE PAVING AND SUBGRADE RECOMMENDATIONS. CIVIL ENGINEER WILL NOT INTERPRET SOILS REPORTS OR ACCEPT RESPONSIBILITY FOR ALTERNATIVE METHODS PROPOSED BY THE CONTRACTOR.
- UNDERCUTTING OF SOFT SPOTS AND PLACEMENT OF EARTHWORK IS GOVERNED FIRST BY THE GEOTECHNICAL REPORT. OBSERVATION AND TESTING SHALL BE PERFORMED BY A QUALIFIED GEOTECHNICAL ENGINEER TO VERIFY THAT THE SOFT SPOTS ARE PROPERLY OVEREXCAVATED AND REPLACED OR STABILIZED.
- IF EXCAVATED MATERIAL IS UNSUITABLE FOR COMPACTION, AS DETERMINED BY THE GEOTECHNICAL ENGINEER, THE CONTRACTOR SHALL FURNISH SUITABLE BORROW.
- STRIPPING, PROOFROLLING, SUBGRADE SCARIFICATION, COMPACTION, AND FILL CONSTRUCTION IN THE BUILDING AND PAVING AREAS SHALL BE PERFORMED ACCORDING TO THE GEOTECHNICAL REPORT. EMBANKMENT BENEATH BUILDING PADS OR FOR PAVING SUBGRADE SHALL BE PLACED IN LIFTS NOT EXCEEDING EIGHT (8) INCHES AND COMPACTED TO A MINIMUM OF 98% AND 96% STANDARD PROCTOR DENSITY, RESPECTIVELY, AT OPTIMUM MOISTURE CONTENT UNLESS OTHERWISE SPECIFIED THEREIN. CONTRACTOR SHALL PROVIDE WATER AS REQUIRED TO OBTAIN SPECIFIED COMPACTION.
- EXCAVATE TO INDICATED ELEVATIONS AND DIMENSIONS WITHIN A TOLERANCE OF PLUS OR MINUS 1 INCH, APPLICABLE. EXTEND EXCAVATIONS A SUFFICIENT DISTANCE FROM STRUCTURES FOR PLACING AND REMOVING CONCRETE FORMWORK, FOR INSTALLING SERVICES AND OTHER CONSTRUCTION, AND FOR INSPECTIONS.
- PAVING CONTRACTOR IS RESPONSIBLE TO REVIEW ALL FIELD ESTABLISHED GRADES

- PRIOR TO PLACEMENT OF MATERIALS SO AS TO PROVIDE POSITIVE DRAINAGE IN ALL CASES.
- CONTRACTOR SHALL COORDINATE AND PROVIDE ALL STAKING NECESSARY TO INSTALL CONDUITS SUFFICIENT FOR UTILITY AND IRRIGATION SERVICES WHETHER OR NOT SHOWN ON THE CIVIL ENGINEER'S PLANS.
- GRADES NOT OTHERWISE INDICATED ON THE PLANS SHALL BE UNIFORM LEVELS OR SLOPES BETWEEN POINTS WHERE ELEVATIONS ARE GIVEN. ABRUPT CHANGES IN SLOPES SHALL BE WELL ROUNDED. THE CONTRACTOR IS RESPONSIBLE FOR POSITIVE SITE DRAINAGE.
- CONTRACTOR IS RESPONSIBLE TO MEET AND MATCH NEW PAVEMENT WITH EXISTING ADJACENT PAVEMENT AREAS. THE TRANSITION BETWEEN THIS SITE AND ADJACENT SITES MUST BE SMOOTH AND MONOLITHIC. ALL GRADING MUST MEET AND MATCH GRADES ON ALL SIDES.
- ACCESSIBLE ROUTES AND SIDEWALKS ARE NOT TO EXCEED 5% RUNNING SLOPE (EXCEPT AT RAMPS) AND 2% CROSS. ACCESSIBLE PARKING AND ACCESS AISLES NOT TO EXCEED 2% SLOPE IN ANY DIRECTION. ALL RAMPS SHALL COMPLY WITH THE APPLICABLE ACCESSIBLE DESIGN GUIDELINES.
- ALL CUT OR FILL SLOPES SHALL BE 3H:1V OR FLATTER UNLESS OTHERWISE NOTED.
- LANDSCAPE ISLANDS TO BE FILLED WITH SOIL SUITABLE FOR VEGETATION. THE CONTRACTOR WILL ENSURE THAT NO PONDING WILL OCCUR AT LANDSCAPE ISLANDS. ALL SURFACE WATER MUST DRAIN AROUND THE ISLAND WITH POSITIVE SLOPE. NO WATER SHALL BE TRAPPED.
- CONTRACTOR SHALL MEET AND MATCH TOP OF JUNCTION BOXES/MANHOLES OR CLEANOUTS WITH FINISHED PAVING GRADES. FINAL GRADES OF ABOVE SURFACE UTILITIES NOT IN PAVED AREAS, INCLUDING BUT NOT LIMITED TO JUNCTION BOX/MANHOLE LIDS, WATER METER LIDS, AND SEWER CLEANOUTS, ARE TO BE ADJUSTED BY THE UTILITY CONTRACTOR TO CONFORM TO LANDSCAPING SOIL INSTALLATIONS.
- CONTRACTOR SHALL REFER TO ARCHITECTURAL AND MEP PLANS FOR THE EXACT LOCATIONS AND DIMENSIONS OF ENTRY, EXIT PORCHES, PRECISE BUILDING DIMENSIONS, EXACT BUILDING UTILITY ENTRANCE LOCATIONS, AND DOWNSPROUTS.
- EXISTING DRAINAGE STRUCTURES TO BE INSPECTED AND REPAIRED AS NEEDED. EXISTING PIPES ARE TO BE CLEANED OUT TO REMOVE ALL SILT AND DEBRIS AT THE COMPLETION OF THE PROJECT.

- IF ANY EXISTING STRUCTURES TO REMAIN ARE DAMAGED DURING CONSTRUCTION, IT SHALL BE THE CONTRACTOR'S RESPONSIBILITY TO REPAIR OR REPLACE THE EXISTING STRUCTURE AS NECESSARY.
- ALL STORM PIPE ENTERING CONCRETE STRUCTURES SHALL BE GROUTED TO ENSURE CONNECTION AT STRUCTURE IS WATER TIGHT.
- CONTRACTOR IS RESPONSIBLE FOR TEMPORARY ACCESS ROADS AND SHALL MAINTAIN POSITIVE DRAINAGE AWAY FROM BUILDING AND STRUCTURES FOR ALL GRASSED AND PAVED AREAS OF ENTIRE SITE THROUGHOUT CONSTRUCTION AND AVOID PONDING OR RUTTING. TEMPORARY DEWATERING, INCLUDING PUMPING, MAY BE REQUIRED AND SHALL BE INCLUDED IN THE SCOPE OF WORK.
- UNLESS OTHERWISE INDICATED, ALL DISTURBED SOIL AREAS SHALL RECEIVE FOUR (4) INCHES OF TOPSOIL AND SHALL BE PERMANENTLY STABILIZED WITH SEED OR SOD.
- REMOVE ALL TREES (INCLUDING ROOTBALLS), GRASS, WEEDS, ROOTS, AND OTHER DEBRIS FROM THE AREA TO BE EXCAVATED, FILLED, OR GRADED.
- EXISTING TREES WHERE INDICATED SHALL BE PROTECTED FROM CONSTRUCTION ACTIVITIES. ALL TREE PROTECTION MEASURES SHALL BE INSTALLED PRIOR TO GRADING. ALL TREE PROTECTION FENCING TO BE INSPECTED DAILY AND ALL GRADING ACTIVITIES TO REMAIN OUTSIDE THE DRIP LINES.

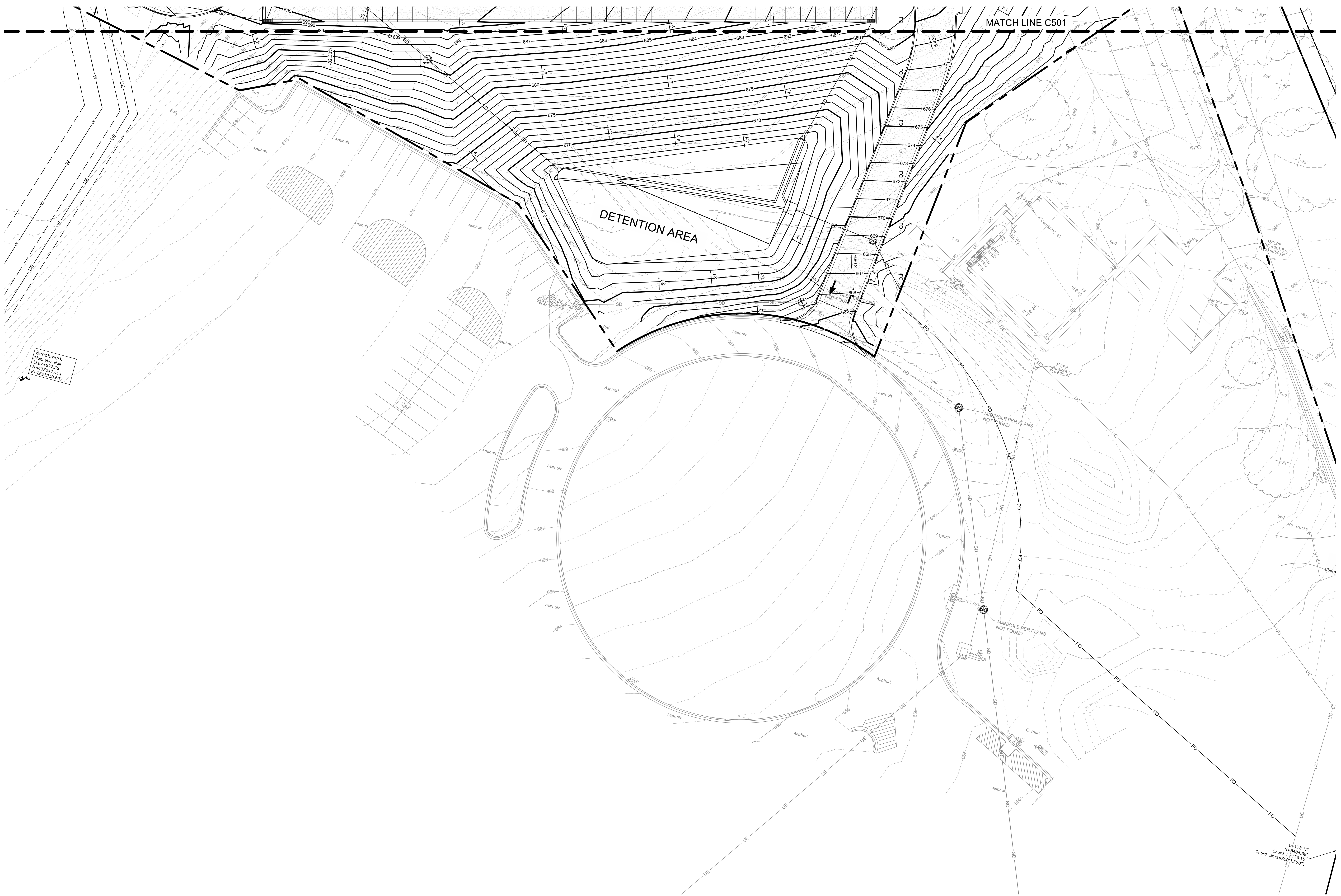
BENCHMARKS:

BENCHMARK 1 DESCRIPTION	BENCHMARK 2 DESCRIPTION
ELEV.:	ELEV.:
N:	N:
E:	E:



CAUTION
NOTICE TO CONTRACTOR

THE CONTRACTOR IS SPECIFICALLY CAUTIONED THE LOCATION AND ELEVATION OF EXISTING UTILITIES AS SHOWN ON THESE PLANS ARE BASED ON RECORDS OF THE VARIOUS UTILITY COMPANIES AND MEASUREMENTS TAKEN IN THE FIELD. THE INFORMATION IS NOT TO BE RELIED ON AS BEING EXACT OR COMPLETE. THE CONTRACTOR MUST CALL THE LOCAL UTILITY LOCATION CENTER AT LEAST 72 HOURS BEFORE ANY EXCAVATION TO REQUEST EXACT FIELD LOCATIONS OF THE UTILITIES.



GENERAL GRADING NOTES:

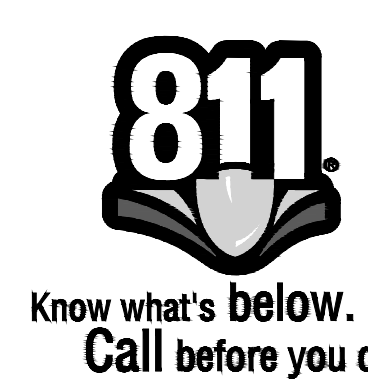
- CONSTRUCTION SHALL COMPLY WITH ALL APPLICABLE GOVERNING CODES. SITE GRADING SHALL NOT PROCEED UNTIL EROSION CONTROL MEASURES HAVE BEEN INSTALLED, INSPECTED, AND APPROVED BY LOCAL AUTHORITIES.
- ALL BENCHMARKS, CONTROL POINTS, PROPERTY MARKERS, AND RIGHT-OF-WAY MONUMENTS DISTURBED OR DESTROYED SHALL BE RESET UNDER THE SUPERVISION OF A PROFESSIONAL LAND SURVEYOR LICENSED IN THE STATE OF _____ ALL SURVEYING COSTS SHALL BE THE CONTRACTORS.
- THE CONTRACTOR SHALL VERIFY UTILITY LOCATIONS BEFORE EXCAVATING.
- TOPSOIL SHALL BE STRIPPED TO A DEPTH WHERE SOIL IS FREE OF ROOTS AND VEGETATION.
- REFERENCE GEOTECHNICAL ENGINEERING REPORT BY DATED FOR COMPLETE PAVING AND SUBGRADE RECOMMENDATIONS. CIVIL ENGINEER WILL NOT INTERPRET SOILS REPORTS OR ACCEPT RESPONSIBILITY FOR ALTERNATIVE METHODS PROPOSED BY THE CONTRACTOR.
- UNDERCUTTING OF SOFT SPOTS AND PLACEMENT OF EARTHWORK IS GOVERNED FIRST BY THE GEOTECHNICAL REPORT. OBSERVATION AND TESTING SHALL BE PERFORMED BY A QUALIFIED GEOTECHNICAL ENGINEER TO VERIFY THAT THE SOFT SPOTS ARE PROPERLY OVEREXCAVATED AND REPLACED OR STABILIZED.
- IF EXCAVATED MATERIAL IS UNSUITABLE FOR COMPACTION, AS DETERMINED BY THE GEOTECHNICAL ENGINEER, THE CONTRACTOR SHALL FURNISH SUITABLE BORROW.
- STRIPPING, PROOFROLLING, SUBGRADE SCARIFICATION, COMPACTION, AND FILL CONSTRUCTION IN THE BUILDING AND PAVING AREAS SHALL BE PERFORMED ACCORDING TO THE GEOTECHNICAL REPORT. EMBANKMENT BENEATH BUILDING PADS OR FOR PAVING SUBGRADE SHALL BE PLACED IN LIFTS NOT EXCEEDING EIGHT (8) INCHES AND COMPACTED TO A MINIMUM OF 98% AND 95% STANDARD PROCTOR DENSITY, RESPECTIVELY, AT OPTIMUM MOISTURE CONTENT UNLESS OTHERWISE SPECIFIED THEREIN. CONTRACTOR SHALL PROVIDE WATER AS REQUIRED TO OBTAIN SPECIFIED COMPACTION.
- EXCAVATE TO INDICATED ELEVATIONS AND DIMENSIONS WITHIN A TOLERANCE OF PLUS OR MINUS 1 INCH IF APPLICABLE. EXTEND EXCAVATIONS A SUFFICIENT DISTANCE FROM STRUCTURES FOR PLACING AND REMOVING CONCRETE FORMWORK, FOR INSTALLING SERVICES AND OTHER CONSTRUCTION, AND FOR INSPECTIONS.
- PAVING CONTRACTOR IS RESPONSIBLE TO REVIEW ALL FIELD ESTABLISHED GRADES

- PRIOR TO PLACEMENT OF MATERIALS SO AS TO PROVIDE POSITIVE DRAINAGE IN ALL CASES.
- CONTRACTOR SHALL COORDINATE AND PROVIDE ALL STAKING NECESSARY TO INSTALL CONDUITS SUFFICIENT FOR UTILITY AND IRRIGATION SERVICES WHETHER OR NOT SHOWN ON THE CIVIL ENGINEER'S PLANS.
- GRADES NOT OTHERWISE INDICATED ON THE PLANS SHALL BE UNIFORM LEVELS OR SLOPES BETWEEN POINTS WHERE ELEVATIONS ARE GIVEN. ABRUPT CHANGES IN SLOPES SHALL BE WELL ROUNDED. THE CONTRACTOR IS RESPONSIBLE FOR POSITIVE SITE DRAINAGE.
- CONTRACTOR IS RESPONSIBLE TO MEET AND MATCH NEW PAVEMENT WITH EXISTING ADJACENT PAVEMENT AREAS. THE TRANSITION BETWEEN THIS SITE AND ADJACENT SITES MUST BE SMOOTH AND MONOLITHIC. ALL GRADING MUST MEET AND MATCH GRADES ON ALL SIDES.
- ACCESSIBLE ROUTES AND SIDEWALKS ARE NOT TO EXCEED 5% RUNNING SLOPE (EXCEPT AT RAMPS) AND 2% CROSS. ACCESSIBLE PARKING AND ACCESS AISLES NOT TO EXCEED 2% SLOPE IN ANY DIRECTION. ALL RAMPS SHALL COMPLY WITH THE APPLICABLE ACCESSIBLE DESIGN GUIDELINES.
- ALL CUT OR FILL SLOPES SHALL BE 3H:1V OR FLATTER UNLESS OTHERWISE NOTED.
- LANDSCAPE ISLANDS TO BE FILLED WITH SOIL SUITABLE FOR VEGETATION. THE CONTRACTOR WILL ENSURE THAT NO PONDING WILL OCCUR AT LANDSCAPE ISLANDS. ALL SURFACE WATER MUST DRAIN AROUND THE ISLAND WITH POSITIVE SLOPE. NO WATER SHALL BE TRAPPED.
- CONTRACTOR SHALL MEET AND MATCH TOP OF JUNCTION BOXES/MANHOLES OR CLEANOUTS WITH FINISHED PAVING GRADES. FINAL GRADES OF ABOVE SURFACE UTILITIES NOT IN PAVED AREAS, INCLUDING BUT NOT LIMITED TO JUNCTION BOX/MANHOLE LIDS, WATER METER LIDS, AND SEWER CLEANOUTS, ARE TO BE ADJUSTED BY THE UTILITY CONTRACTOR TO CONFORM TO LANDSCAPING SOIL INSTALLATIONS.
- CONTRACTOR SHALL REFER TO ARCHITECTURAL AND MEP PLANS FOR THE EXACT LOCATIONS AND DIMENSIONS OF ENTRY, EXIT PORCHES, PRECISE BUILDING DIMENSIONS, EXACT BUILDING UTILITY ENTRANCE LOCATIONS, AND DOWNSPOUTS.
- EXISTING DRAINAGE STRUCTURES TO BE INSPECTED AND REPAIRED AS NEEDED. EXISTING PIPES ARE TO BE CLEANED OUT TO REMOVE ALL SILT AND DEBRIS AT THE COMPLETION OF THE PROJECT.

- IF ANY EXISTING STRUCTURES TO REMAIN ARE DAMAGED DURING CONSTRUCTION, IT SHALL BE THE CONTRACTOR'S RESPONSIBILITY TO REPAIR OR REPLACE THE EXISTING STRUCTURE AS NECESSARY.
- ALL STORM PIPE ENTERING CONCRETE STRUCTURES SHALL BE GROUTED TO ENSURE CONNECTION AT STRUCTURE IS WATER TIGHT.
- CONTRACTOR IS RESPONSIBLE FOR TEMPORARY ACCESS ROADS AND SHALL MAINTAIN POSITIVE DRAINAGE AWAY FROM BUILDING AND STRUCTURES FOR ALL GRASSED AND PAVED AREAS OF ENTIRE SITE THROUGHOUT CONSTRUCTION AND AVOID PONDING OR RUTTING. TEMPORARY DEWATERING, INCLUDING PUMPING, MAY BE REQUIRED AND SHALL BE INCLUDED IN THE SCOPE OF WORK.
- UNLESS OTHERWISE INDICATED, ALL DISTURBED SOIL AREAS SHALL RECEIVE FOUR (4) INCHES OF TOPSOIL AND SHALL BE PERMANENTLY STABILIZED WITH SEED OR SOD.
- REMOVE ALL TREES (INCLUDING ROOTBALLS), GRASS, WEEDS, ROOTS, AND OTHER DEBRIS FROM THE AREA TO BE EXCAVATED, FILLED, OR GRADED.
- EXISTING TREES WHERE INDICATED SHALL BE PROTECTED FROM CONSTRUCTION ACTIVITIES. ALL TREE PROTECTION MEASURES SHALL BE INSTALLED PRIOR TO GRADING. ALL TREE PROTECTION FENCING TO BE INSPECTED DAILY AND ALL GRADING ACTIVITIES TO REMAIN OUTSIDE THE DRIP LINES.

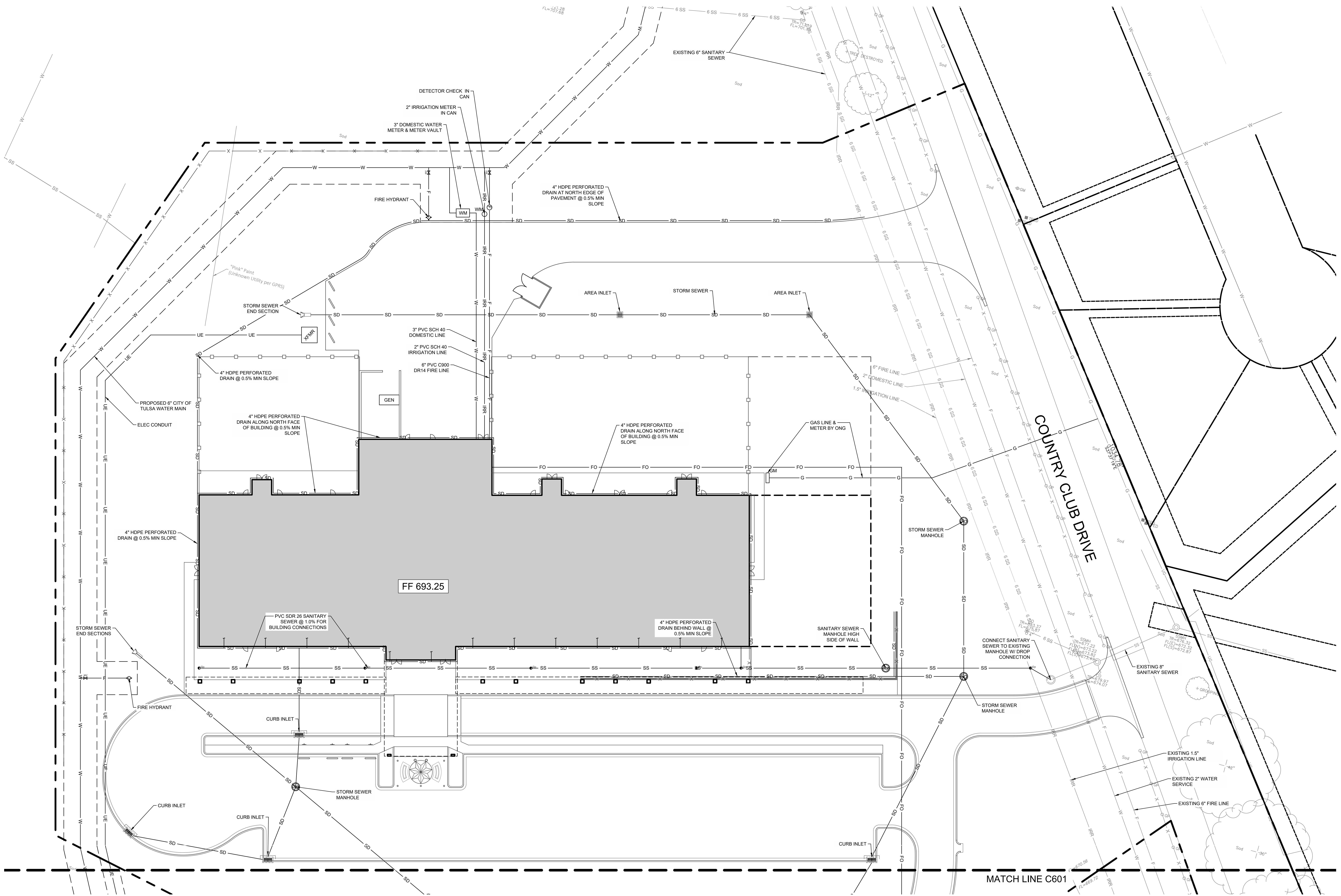
BENCHMARKS:

BENCHMARKS PER TOPOGRAPHIC SURVEY COMPLETED BY XX DATED XX	
BENCHMARK 1	BENCHMARK 2
DESCRIPTION	DESCRIPTION
ELEV.	ELEV.
N	N
E	E



CAUTION
NOTICE TO CONTRACTOR

THE CONTRACTOR IS SPECIFICALLY CAUTIONED THE LOCATION AND ELEVATION OF EXISTING UTILITIES AS SHOWN ON THESE PLANS ARE BASED ON RECORDS OF THE VARIOUS UTILITY COMPANIES AND MEASUREMENTS TAKEN IN THE FIELD. THE INFORMATION IS NOT TO BE RELIED ON AS BEING EXACT OR COMPLETE. THE CONTRACTOR MUST CALL THE LOCAL UTILITY LOCATION CENTER AT LEAST 72 HOURS BEFORE ANY EXCAVATION TO REQUEST EXACT FIELD LOCATIONS OF THE UTILITIES.



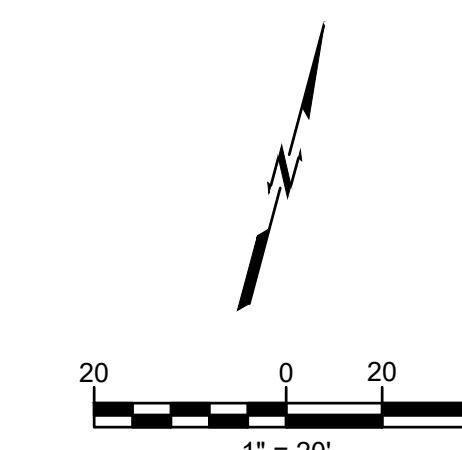
GENERAL UTILITY NOTES:

- PRIOR TO CONSTRUCTION, LOCATION OF SITE UTILITIES SHALL BE VERIFIED BY CONTRACTOR WITH THE PROPER UTILITY COMPANY PROVIDING SERVICE. SERVICE LINES SHOWN FOR COORDINATION AND REFERENCE ONLY. CONTRACTOR SHALL COORDINATE WITH ALL SERVICE PROVIDERS (TELECOMMUNICATIONS, ELECTRIC, GAS, ETC.) PRIOR TO INSTALLING SERVICE LINES OR APPURTENANCES. CONTRACTOR IS TO COORDINATE WITH ALL UTILITY COMPANIES FOR INSTALLATION REQUIREMENTS AND SPECIFICATIONS.
- THIS PLAN DEPICTS THE INTENT OF PRIVATE AND FRANCHISE UTILITY ROUTINGS AS UNDERSTOOD DURING DESIGN PHASES OF THE PROJECT. IT IS THE OWNER/DEVELOPER'S RESPONSIBILITY TO NEGOTIATE ALL CONTRACTS FOR SERVICE WITH EACH INDIVIDUAL UTILITY COMPANY AND TO PROVIDE THE ENGINEER WITH ANY DOCUMENTS THAT MAY AFFECT THE LAYOUT.
- CONTRACTOR SHALL NOTIFY THE UTILITY AUTHORITIES' INSPECTORS BEFORE CONNECTING TO ANY EXISTING LINE IN ACCORDANCE WITH LOCAL REQUIREMENTS.
- CONTRACTOR IS RESPONSIBLE FOR COMPLYING WITH THE SPECIFICATIONS OF THE LOCAL AUTHORITIES REGARDING TO MATERIALS AND INSTALLATION OF THE WATER AND SEWER LINES.
- NOT ALL EXISTING UNDERGROUND UTILITIES MAY BE SHOWN ON THIS PLAN. THE EXACT LOCATIONS AND NOTIFICATIONS OF THE PROPER AGENCY ARE THE RESPONSIBILITY OF THE CONTRACTOR PRIOR TO CONSTRUCTION.
- RESTRAINED JOINTS SHALL BE PROVIDED ON 4" AND LARGER WATER LINES AT ALL BENDS, TEES AND FIRE HYDRANTS FOR A MINIMUM 2 JOINTS BOTH SIDES OF FITTING PER AWWA MINIMUM STANDARDS.
- CONTRACTOR SHALL REFER TO ARCHITECTURAL, MECHANICAL, ELECTRICAL, AND PLUMBING PLANS FOR PRECISE BUILDING DIMENSIONS AND EXACT BUILDING UTILITY ENTRANCE LOCATIONS. TERMINATE SERVICE PIPING 5' FROM BUILDING WALL UNTIL BUILDING PIPING SYSTEMS ARE INSTALLED. TERMINATE PIPING WITH VALVE AND CAP PLUG OR FLANGE AS REQUIRED FOR PIPING MATERIAL. MAKE CONNECTIONS TO BUILDING PIPING SYSTEMS WHEN THOSE SYSTEMS ARE INSTALLED.
- REFER TO PLUMBING AND/OR FIRE PROTECTION SHEETS FOR FIRE LINE LEAD-IN LOCATION AND DETAIL. CONTRACTOR SHALL UTILIZE AWWA AND FACTORY MUTUAL TEST AND CERTIFICATIONS FOR ALL UNDERGROUND FIRE PROTECTION LINES AS A MINIMUM. LOCAL OR STATE AUTHORITIES MAY REQUIRE MORE STRINGENT TESTING WHICH SHALL BE PROVIDED BY THE GC IF REQUIRED.

- FIRE LINE BACKFLOW PREVENTER (DOUBLE CHECK ASSEMBLY) SHALL BE LOCATED INSIDE THE BUILDING.
- ALL PIPING SHALL BE INSTALLED WITH A MINIMUM OF 30" OF COVER, UNLESS NOTED OTHERWISE. ALL TRENCHING, PIPE LAYING, AND BACKFILLING SHALL BE IN ACCORDANCE WITH FEDERAL OSHA REGULATIONS. UTILITY TRENCH DETAIL RE: XXCXXX. STORM TRENCH DETAIL RE: XXCXXX.
- REFER TO MECHANICAL, ELECTRICAL, AND PLUMBING FOR CONTINUATION OF UTILITIES AT BUILDING.
- THE CONTRACTOR IS RESPONSIBLE FOR THE INSTALLATION OF ALL CONDUITS (INCLUDING IRRIGATION SLEEVES) PRIOR TO PAVING WHETHER OR NOT SHOWN ON CIVIL PLANS. THE CONTRACTOR SHALL INSTALL ALL CONDUITS WITH A PULL STRING. ALL CONDUIT SHALL BE SCH. 40 PVC, UNLESS NOTED OTHERWISE.
- CONSTRUCT CLAY TRENCH PLUG THAT EXTENDS AT LEAST 5 FEET OUT FROM THE FACE OF THE BUILDING EXTERIOR. THE PLUG MATERIAL SHALL CONSIST OF CLAY COMPACTED AT A WATER CONTENT AT OR ABOVE THE SOIL'S OPTIMUM WATER CONTENT. THE CLAY FILL SHALL BE PLACED TO COMPLETELY SURROUND THE UTILITY LINE AND BE COMPACTED TO AT LEAST 95% STANDARD PROCTOR DENSITY.
- IF ANY EXISTING STRUCTURES TO REMAIN ARE DAMAGED DURING CONSTRUCTION IT SHALL BE THE CONTRACTOR'S RESPONSIBILITY TO REPAIR OR REPLACE THE EXISTING STRUCTURE AS NECESSARY.
- ALL STORM PIPE ENTERING CONCRETE STRUCTURES SHALL BE GROUTED WITH NON SHRINK GROUT TO ASSURE CONNECTION AT STRUCTURE IS WATER TIGHT.
- PROVIDE SLEEVE WITH LINK-SEAL (OR APPROVED EQUAL) AT GRADE BEAM PENETRATION LOCATIONS (RE: STRUCTURAL FOR DETAIL).
- CONTRACTOR SHALL REFER TO ELECTRICAL SITE PLAN OR PHOTOMETRIC PLAN (BY OTHERS) FOR ALL SITE LIGHTING CONSTRUCTION DETAILS, REQUIREMENTS, AND FINAL POLE LOCATIONS. POLE LOCATIONS ARE SHOWN ON THIS SHEET FOR REFERENCE ONLY. IT IS THE CONTRACTOR'S RESPONSIBILITY TO MAKE ALL NECESSARY ADJUSTMENTS TO POLE LOCATIONS AS NECESSARY TO AVOID OBSTRUCTIONS (I.E. UNDERGROUND UTILITIES, SIDEWALKS, ETC.). CONTRACTOR SHALL POT HOLE EACH LOCATION WHERE A NEW LIGHT POLE IS TO BE PLACED PRIOR TO CONSTRUCTION TO VERIFY THERE ARE NO CONFLICTS WITH EXISTING UTILITIES. IF DAMAGES OCCUR TO EXISTING UTILITIES THEY WILL REPLACE OR REPAIR AT THEIR OWN EXPENSE. POLE LOCATIONS MAY NOT BE ADJUSTED WITHOUT PRIOR APPROVAL FROM THE ENGINEERS SINCE A CHANGE IN LOCATION CAN IMPACT THE INTENDED

PHOTOMETRIC DESIGN.

- CONTRACTOR SHALL COORDINATE THE CONSTRUCTION OF PROPOSED SIGN(S) AND INSTALLATION OF SECURITY CAMERAS WITH OWNER'S CONSTRUCTION MANAGER. COORDINATE WITH ELECTRICAL SITE PLAN TO PROVIDE ALL CONDUIT NEEDED FOR DATA AND/OR POWER TO SITE SIGN(S), SECURITY CAMERAS, AND LIGHT POLES.



CAUTION
NOTICE TO CONTRACTOR

THE CONTRACTOR IS SPECIFICALLY CAUTIONED THE LOCATION AND ELEVATION OF EXISTING UTILITIES AS SHOWN ON THESE PLANS ARE BASED ON RECORDS OF THE VARIOUS UTILITY COMPANIES AND MEASUREMENTS TAKEN IN THE FIELD. THE INFORMATION IS NOT TO BE RELIED ON AS BEING EXACT OR COMPLETE. THE CONTRACTOR MUST CALL THE LOCAL UTILITY LOCATION CENTER AT LEAST 72 HOURS BEFORE ANY EXCAVATION TO REQUEST EXACT FIELD LOCATIONS OF THE UTILITIES.

PLOT: 3/13/2024 5:02:18 PM
 ORIS SIZE: 36"X48"
 V:\04-Server\Projects\240205-CN Child Dev Center\DWG\PRODUCT\C601_Utility_Plan.dwg



CN CATOOSA CHILD DEVELOPMENT CENTER
UTILITY PLAN - SOUTH

BLUE RIVER PROJECT NUMBER:
20230011

ISSUE DATE:
03/14/2024

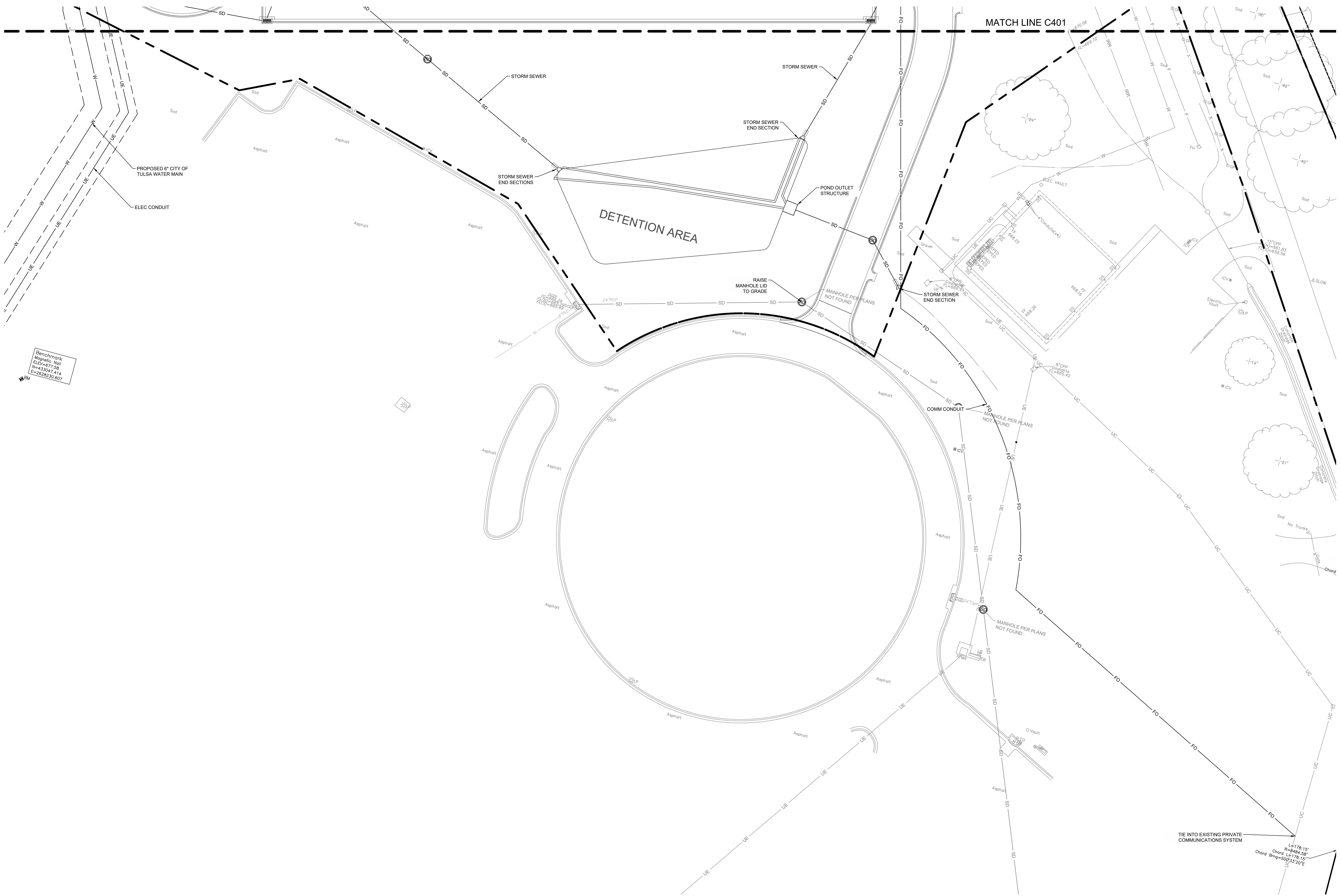
ISSUE:
CM PACKAGE

OTHER ISSUE DATES:
NO. DESCRIPTION DATE

SHEET NAME:
UTILITY PLAN - SOUTH

SHEET NUMBER:
C602

© 2022 COPYRIGHT BLUE RIVER ARCHITECTS, LLC



Benchmark
Magnum No. 1
ELEVATION 728
N=233047.14
E=2628230.657

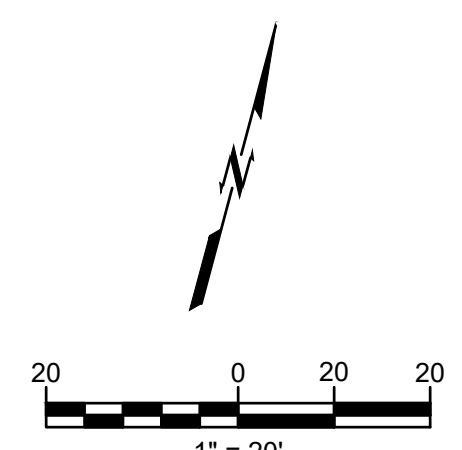
GENERAL UTILITY NOTES:

- PRIOR TO CONSTRUCTION, LOCATION OF SITE UTILITIES SHALL BE VERIFIED BY CONTRACTOR WITH THE PROPER UTILITY COMPANY PROVIDING SERVICE. SERVICE LINES SHOWN FOR COORDINATION AND REFERENCE ONLY. CONTRACTOR SHALL COORDINATE WITH ALL SERVICE PROVIDERS (TELECOMMUNICATIONS, ELECTRIC, GAS, ETC.) PRIOR TO INSTALLING SERVICE LINES OR APPURTENANCES. CONTRACTOR IS TO COORDINATE WITH ALL UTILITY COMPANIES FOR INSTALLATION REQUIREMENTS AND SPECIFICATIONS.
- THIS PLAN DEPICTS THE INTENT OF PRIVATE AND FRANCHISE UTILITY ROUTINGS AS UNDERSTOOD DURING DESIGN PHASES OF THE PROJECT. IT IS THE OWNER/DEVELOPER'S RESPONSIBILITY TO NEGOTIATE ALL CONTRACTS FOR SERVICE WITH EACH INDIVIDUAL UTILITY COMPANY AND TO PROVIDE THE ENGINEER WITH ANY DOCUMENTS THAT MAY AFFECT THE LAYOUT.
- CONTRACTOR SHALL NOTIFY THE UTILITY AUTHORITIES' INSPECTORS BEFORE CONNECTING TO ANY EXISTING LINE IN ACCORDANCE WITH LOCAL REQUIREMENTS.
- CONTRACTOR IS RESPONSIBLE FOR COMPLYING WITH THE SPECIFICATIONS OF THE LOCAL AUTHORITIES REGARDING TO MATERIALS AND INSTALLATION OF THE WATER AND SEWER LINES.
- NOT ALL EXISTING UNDERGROUND UTILITIES MAY BE SHOWN ON THIS PLAN. THE EXACT LOCATIONS AND NOTIFICATIONS OF THE PROPER AGENCY ARE THE RESPONSIBILITY OF THE CONTRACTOR PRIOR TO CONSTRUCTION.
- RESTRAINED JOINTS SHALL BE PROVIDED ON 4" AND LARGER WATER LINES AT ALL BENDS, TEES AND FIRE HYDRANTS FOR A MINIMUM 2 JOINTS BOTH SIDES OF FITTING PER AWWA MINIMUM STANDARDS.
- CONTRACTOR SHALL REFER TO ARCHITECTURAL, MECHANICAL, ELECTRICAL, AND PLUMBING PLANS FOR PRECISE BUILDING DIMENSIONS AND EXACT BUILDING UTILITY ENTRANCE LOCATIONS. TERMINATE SERVICE PIPING 5' FROM BUILDING WALL UNTIL BUILDING PIPING SYSTEMS ARE INSTALLED. TERMINATE PIPING WITH VALVE AND CAP PLUG OR FLANGE AS REQUIRED FOR PIPING MATERIAL. MAKE CONNECTIONS TO BUILDING PIPING SYSTEMS WHEN THOSE SYSTEMS ARE INSTALLED.
- REFER TO PLUMBING AND/OR FIRE PROTECTION SHEETS FOR FIRE LINE LEAD-IN LOCATION AND DETAIL. CONTRACTOR SHALL UTILIZE AWWA AND FACTORY MUTUAL TEST AND CERTIFICATIONS FOR ALL UNDERGROUND FIRE PROTECTION LINES AS A MINIMUM. LOCAL OR STATE AUTHORITIES MAY REQUIRE MORE STRINGENT TESTING WHICH SHALL BE PROVIDED BY THE GC IF REQUIRED.

- FIRE LINE BACKFLOW PREVENTER (DOUBLE CHECK ASSEMBLY) SHALL BE LOCATED INSIDE THE BUILDING.
- ALL PIPING SHALL BE INSTALLED WITH A MINIMUM OF 30" OF COVER, UNLESS NOTED OTHERWISE. ALL TRENCHING, PIPE LAYING, AND BACKFILLING SHALL BE IN ACCORDANCE WITH FEDERAL OSHA REGULATIONS. UTILITY TRENCH DETAIL RE: XXCXXX. STORM TRENCH DETAIL RE: XXCXXX.
- REFER TO MECHANICAL, ELECTRICAL, AND PLUMBING FOR CONTINUATION OF UTILITIES AT BUILDING.
- THE CONTRACTOR IS RESPONSIBLE FOR THE INSTALLATION OF ALL CONDUITS (INCLUDING IRRIGATION SLEEVES) PRIOR TO PAVING WHETHER OR NOT SHOWN ON CIVIL PLANS. THE CONTRACTOR SHALL INSTALL ALL CONDUITS WITH A PULL STRING. ALL CONDUIT SHALL BE SCH. 40 PVC, UNLESS NOTED OTHERWISE.
- CONSTRUCT CLAY TRENCH PLUG THAT EXTENDS AT LEAST 5 FEET OUT FROM THE FACE OF THE BUILDING EXTERIOR. THE PLUG MATERIAL SHALL CONSIST OF CLAY COMPACTED AT A WATER CONTENT AT OR ABOVE THE SOIL'S OPTIMUM WATER CONTENT. THE CLAY FILL SHALL BE PLACED TO COMPLETELY SURROUND THE UTILITY LINE AND BE COMPACTED TO AT LEAST 95% STANDARD PROCTOR DENSITY.
- IF ANY EXISTING STRUCTURES TO REMAIN ARE DAMAGED DURING CONSTRUCTION IT SHALL BE THE CONTRACTOR'S RESPONSIBILITY TO REPAIR OR REPLACE THE EXISTING STRUCTURE AS NECESSARY.
- ALL STORM PIPE ENTERING CONCRETE STRUCTURES SHALL BE GROUTED WITH NON SHRINK GROUT TO ASSURE CONNECTION AT STRUCTURE IS WATER TIGHT.
- PROVIDE SLEEVE WITH LINK-SEAL (OR APPROVED EQUAL) AT GRADE BEAM PENETRATION LOCATIONS (RE: STRUCTURAL FOR DETAIL).
- CONTRACTOR SHALL REFER TO ELECTRICAL, SITE PLAN OR PHOTOMETRIC PLAN (BY OTHERS) FOR ALL SITE LIGHTING CONSTRUCTION DETAILS, REQUIREMENTS, AND FINAL POLE LOCATIONS. POLE LOCATIONS ARE SHOWN ON THIS SHEET FOR REFERENCE ONLY. IT IS THE CONTRACTOR'S RESPONSIBILITY TO MAKE ALL NECESSARY ADJUSTMENTS TO POLE LOCATIONS AS NECESSARY TO AVOID OBSTRUCTIONS (I.E. UNDERGROUND UTILITIES, SIDEWALKS, ETC.). CONTRACTOR SHALL PUT HOLE EACH LOCATION WHERE A NEW LIGHT POLE IS TO BE PLACED PRIOR TO CONSTRUCTION TO VERIFY THERE ARE NO CONFLICTS WITH EXISTING UTILITIES. IF DAMAGES OCCUR TO EXISTING UTILITIES THEY WILL REPLACE OR REPAIR AT THEIR OWN EXPENSE. POLE LOCATIONS MAY NOT BE ADJUSTED WITHOUT PRIOR APPROVAL FROM THE ENGINEERS SINCE A CHANGE IN LOCATION CAN IMPACT THE INTENDED

PHOTOMETRIC DESIGN.

- CONTRACTOR SHALL COORDINATE THE CONSTRUCTION OF PROPOSED SIGN(S) AND INSTALLATION OF SECURITY CAMERAS WITH OWNER'S CONSTRUCTION MANAGER. COORDINATE WITH ELECTRICAL SITE PLAN TO PROVIDE ALL CONDUIT NEEDED FOR DATA AND/OR POWER TO SITE SIGN(S), SECURITY CAMERAS, AND LIGHT POLES.



CAUTION
NOTICE TO CONTRACTOR

THE CONTRACTOR IS SPECIFICALLY CAUTIONED THE LOCATION AND ELEVATION OF EXISTING UTILITIES AS SHOWN ON THESE PLANS ARE BASED ON RECORDS OF THE VARIOUS UTILITY COMPANIES AND MEASUREMENTS TAKEN IN THE FIELD. THE INFORMATION IS NOT TO BE RELIED ON AS BEING EXACT OR COMPLETE. THE CONTRACTOR MUST CALL THE LOCAL UTILITY LOCATION CENTER AT LEAST 72 HOURS BEFORE ANY EXCAVATION TO REQUEST EXACT FIELD LOCATIONS OF THE UTILITIES.