



DATE: 3/6/2025



COOK



MARK: KEF-7
Hard Rock Tower
DATE: 3/6/2025

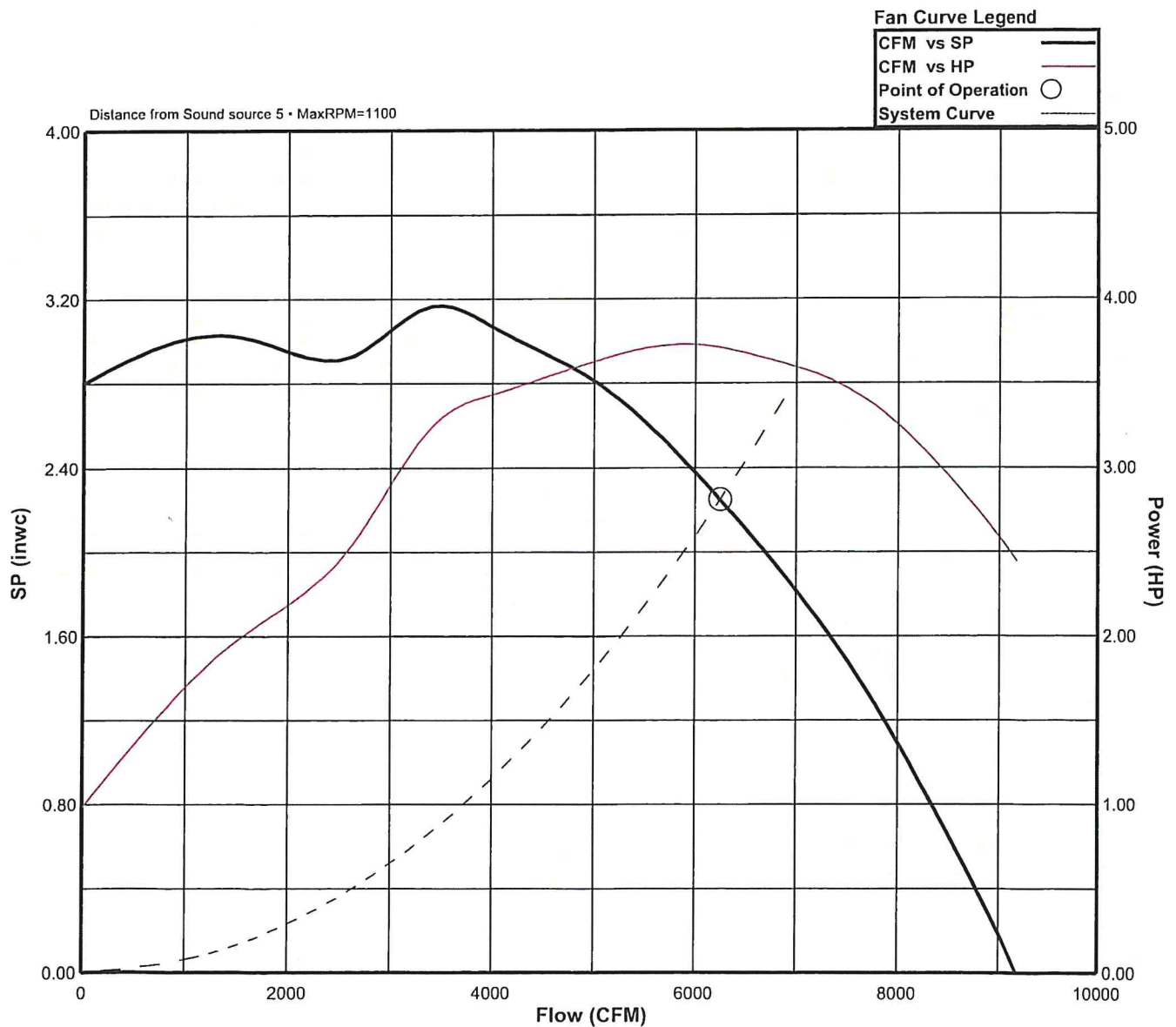
VCR-XP

Performance (*Bhp includes 4% drive loss)

Catalog Number	Flow (CFM)	SP (inwc)	Fan RPM	Power* (HP)	FEG	FEI	OVEL (fpm)	TSPD (fpm)	SE	Temp (°F)	ALT (ft)
365VX11B	6250	2.25	875	3.72	67	1.26	638	8361	62%	70	676

Sound Data Inlet Sound Power by Octave Band

1	2	3	4	5	6	7	8	LwA	dBA	Sones
84	87	85	80	77	76	72	66	84	72	22





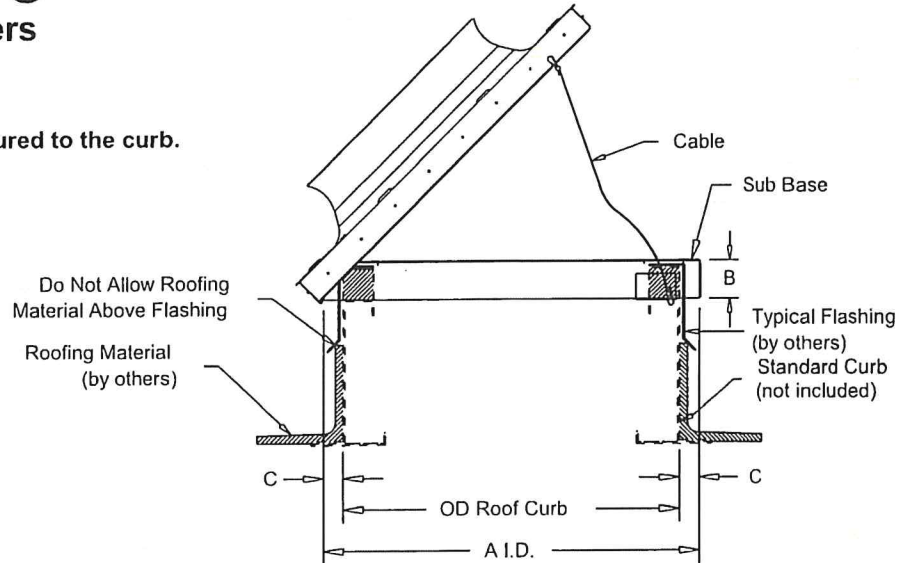
COOK

PROJECT: *Hard Rock Tower*
DATE: 3/6/2025

Heavy Duty Hinged Base Centrifugal Roof Exhausters

Note:

To avoid injury, sub base must be secured to the curb.



Dimensions (inches)

Mark	Qty	Description	A I.D.	B	C	Cable	OD Curb	T.Sq.
KEF-7	1	HINGED SUB BASE 42T	41-3/8	3	7/16	63	40-1/2	42



COOK

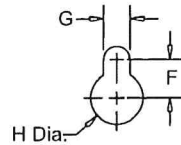
PROJECT: <i>Hard Rock Tower</i>
DATE: 3/6/2025

Grease Trough

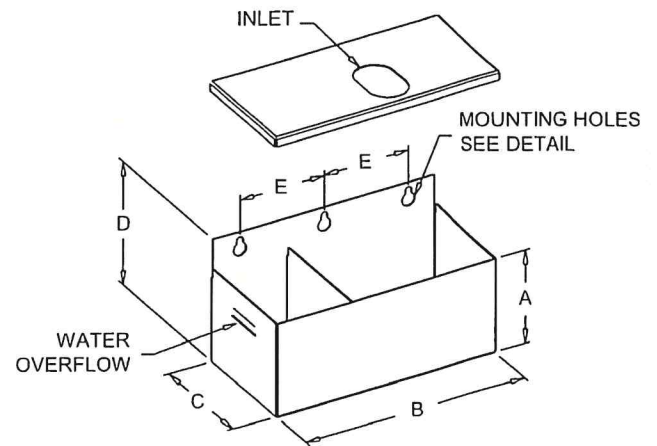
Keyway Mount

STANDARD CONSTRUCTION FEATURES:

All aluminum .063 construction - Continuously welded trough housing corners - Removable lid for servicing - Slotted mounting holes for easy removal - Baffled design for extended capacity.



MOUNTING HOLE DETAIL



Dimensions (inches)

Mark	Qty	Description	A	B	C	D	E	F	G	H Dia.
KEF-7	1	KEYWAY GREASE TROUGH	5	12	6-1/16	6-1/2	4-1/2	1/2	3/8	11/16



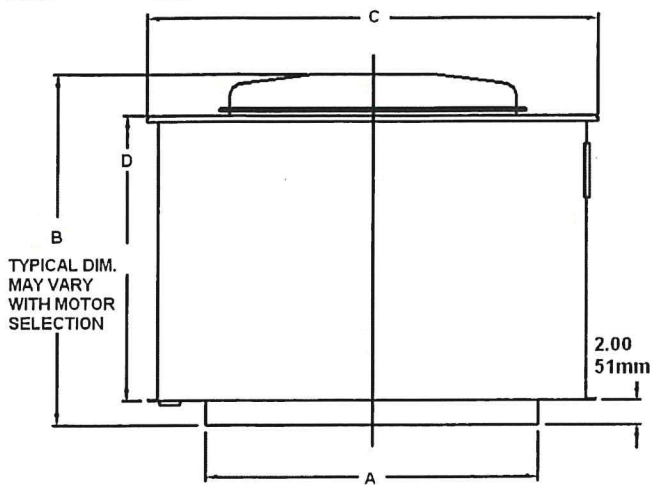
TAG: EF-1,3

Project: CNE Hard Rock Buffet Kitchen Fans
Location: Tulsa, OK

Acme Engineering and Manufacturing Corporation

P.O. Box 978, Muskogee, OK 74402

Print Date: 2/27/2025 1:23:14 PM



Elevation View

A	B	C	D
46.00	44.10	65.75	41.00

DIMENSIONS (inches)

Rough Opening: 41.50 X 41.50

PNU355RG 3 Hp 460/ Three Phase/ 60 Hz/ TEFC 1 Speed NEMA Premium Efficiency - Table 12-12 Motor RPM: 1750 -- Full Perimeter Hinged Base

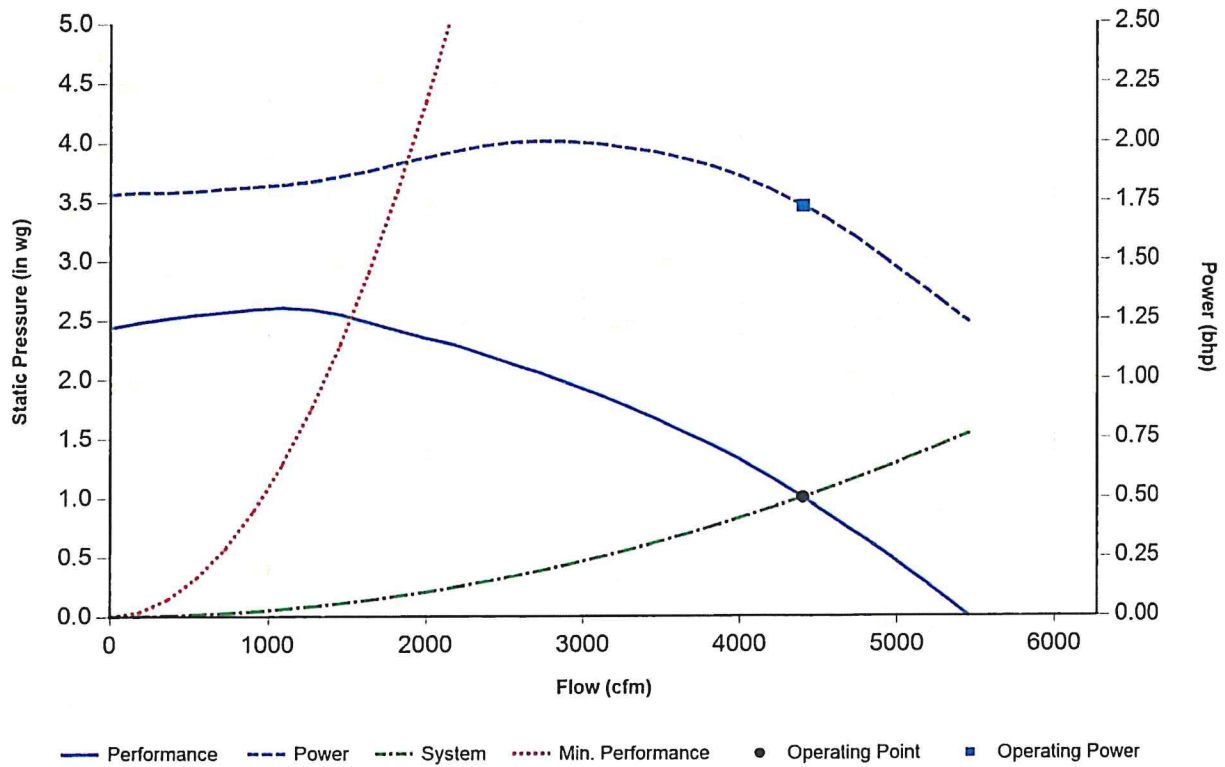
PN: PNU355RG0192, FEI: 1.01, HP: 3.000, CFM: 4400, SP: 1.000, MAX RPM: 696

PERFORMANCE (Altitude = 0 ft, Temp = 68 Degrees F, Density = 0.075 lb/ft3)

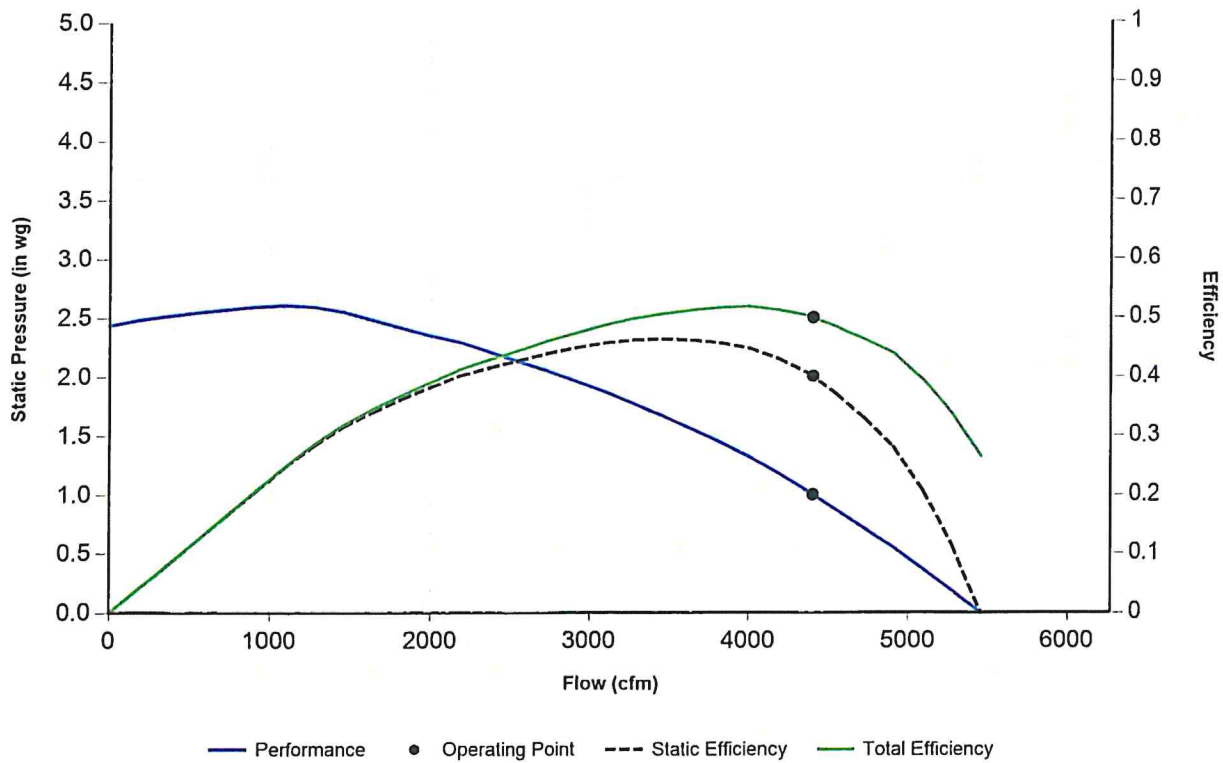
--	--	--	--	--	--	--	--	--	--	--	--	--	--	--	--	--	--	--	--	--	--	--	--	--	--	--	--	--	--	--	--	--	--	--	--	--	--	--	--	--	--	--	--	--	--	--	--	--	--	--	--	--	--	--	--	--	--	--	--	--	--	--	--	--	--	--	--	--	--	--	--	--	--	--	--	--	--	--	--	--	--	--	--	--	--	--	--	--	--	--	--	--	--	--	--	--	--	--	--	--	--	--	--	--	--	--	--	--	--	--	--	--	--	--	--	--	--	--	--	--	--	--	--	--	--	--	--	--	--	--	--	--	--	--	--	--	--	--	--	--	--	--	--	--	--	--	--	--	--	--	--	--	--	--	--	--	--	--	--	--	--	--	--	--	--	--	--	--	--	--	--	--	--	--	--	--	--	--	--	--	--	--	--	--	--	--	--	--	--	--	--	--	--	--	--	--	--	--	--	--	--	--	--	--	--	--	--	--	--	--	--	--	--	--	--	--	--	--	--	--	--	--	--	--	--	--	--	--	--	--	--	--	--	--	--	--	--	--	--	--	--	--	--	--	--	--	--	--	--	--	--	--	--	--	--	--	--	--	--	--	--	--	--	--	--	--	--	--	--	--	--	--	--	--	--	--	--	--	--	--	--	--	--	--	--	--	--	--	--	--	--	--	--	--	--	--	--	--	--	--	--	--	--	--	--	--	--	--	--	--	--	--	--	--	--	--	--	--	--	--	--	--	--	--	--	--	--	--	--	--	--	--	--	--	--	--	--	--	--	--	--	--	--	--	--	--	--	--	--	--	--	--	--	--	--	--	--	--	--	--	--	--	--	--	--	--	--	--	--	--	--	--	--	--	--	--	--	--	--	--	--	--	--	--	--	--	--	--	--	--	--	--	--	--	--	--	--	--	--	--	--	--	--	--	--	--	--	--	--	--	--	--	--	--	--	--	--	--	--	--	--	--	--	--	--	--	--	--	--	--	--	--	--	--	--	--	--	--	--	--	--	--	--	--	--	--	--	--	--	--	--	--	--	--	--	--	--	--	--	--	--	--	--	--	--	--	--	--	--	--	--	--	--	--	--	--	--	--	--	--	--	--	--	--	--	--	--	--	--	--	--	--	--	--	--	--	--	--	--	--	--	--	--	--	--	--	--	--	--	--	--	--	--	--	--	--	--	--	--	--	--	--	--	--	--	--	--	--	--	--	--	--	--	--	--	--	--	--	--	--	--	--	--	--	--	--	--	--	--	--	--	--	--	--	--	--	--	--	--	--	--	--	--	--	--	--	--	--	--	--	--	--	--	--	--	--	--	--	--	--	--	--	--	--	--	--	--	--	--	--	--	--	--	--	--	--	--	--	--	--	--	--	--	--	--	--	--	--	--	--	--	--	--	--	--	--	--	--	--	--	--	--	--	--	--	--	--	--	--	--	--	--	--	--	--	--	--	--	--	--	--	--	--	--	--	--	--	--	--	--	--	--	--	--	--	--	--	--	--	--	--	--	--	--	--	--	--	--	--	--	--	--	--	--	--	--	--	--	--	--	--	--	--	--	--	--	--	--	--	--	--	--	--	--	--	--	--	--	--	--	--	--	--	--	--	--	--	--	--	--	--	--	--	--	--	--	--	--	--	--	--	--	--	--	--	--	--	--	--	--	--	--	--	--	--	--	--	--	--	--	--	--	--	--	--	--	--	--	--	--	--	--	--	--	--	--	--	--	--	--	--	--	--	--	--	--	--	--	--	--	--	--	--	--	--	--	--	--	--	--	--	--	--	--	--	--	--	--	--	--	--	--	--	--	--	--	--	--	--	--	--	--	--	--	--	--	--	--	--	--	--	--	--	--	--	--	--	--	--	--	--	--	--	--	--	--	--	--	--	--	--	--	--	--	--	--	--	--	--	--	--	--	--	--	--	--	--	--	--	--	--	--	--	--	--	--	--	--	--	--	--	--	--	--	--	--	--	--	--	--	--	--	--	--	--	--	--	--	--	--	--	--	--	--	--	--	--	--	--	--	--	--	--	--	--	--	--	--	--	--	--	--	--	--	--	--	--	--	--	--	--	--	--	--	--	--	--	--	--	--	--	--	--	--	--	--	--	--	--	--	--	--	--	--	--	--	--	--	--	--	--	--	--	--	--	--	--	--	--	--	--	--	--	--	--	--	--	--	--	--	--	--	--	--	--	--	--	--	--	--	--	--	--	--	--	--	--	--	--	--	--	--	--	--	--	--	--	--	--	--	--	--	--	--	--	--	--	--	--	--	--	--	--	--	--	--	--	--	--	--	--	--	--	--	--	--	--	--	--	--	--	--	--	--	--	--	--	--	--	--	--	--	--	--	--	--	--	--	--	--	--	--	--	--	--	--	--	--	--	--	--	--	--	--	--	--	--	--	--	--	--	--	--	--	--	--	--	--	--	--	--	--	--	--	--	--	--	--	--	--	--	--	--	--	--	--	--	--	--	--	--	--	--	--	--	--	--	--	--	--	--	--	--	--	--	--	--	--	--	--	--	--	--	--	--	--	--	--	--	--	--	--	--	--	--	--	--	--	--	--	--	--	--	--	--	--	--	--	--	--	--	--	--	--	--	--	--	--	--	--	--	--	--	--	--	--	--	--	--	--	--	--	--	--	--	--	--	--	--	--	--	--	--	--	--	--	--	--	--	--	--	--	--	--	--	--	--	--	--	--	--	--	--	--	--	--	--	--	--	--	--	--	--	--	--	--	--	--	--	--	--	--	--	--	--	--	--	--	--	--	--	--	--	--	--	--	--	--	--	--	--	--	--	--	--	--	--	--	--	--	--	--	--	--	--	--	--	--	--	--	--	--	--	--	--	--	--	--	--	--	--	--	--	--	--	--	--	--	--	--	--	--	--	--	--	--	--	--	--	--	--	--	--	--	--	--	--	--	--	--	--	--	--	--	--	--	--	--	--	--	--	--	--	--	--	--	--	--	--	--	--	--	--	--	--	--	--	--	--	--	--	--	--	--	--	--	--	--	--	--	--	--	--	--	--	--	--	--	--	--	--	--	--	--	--	--	--	--	--	--	--	--	--	--	--	--	--	--	--	--	--	--	--	--	--	--	--	--	--	--	--	--	--	--	--	--	--	--	--	--	--	--	--	--	--	--	--	--	--	--	--	--	--	--	--	--	--	--	--	--	--	--	--	--	--	--	--	--	--	--	--	--	--	--	--	--	--	--	--	--	--	--	--	--	--	--	--	--	--	--	--	--	--	--	--	--	--	--



Performance PNU355RG, Volume (cfm) 4400, SP (in wg) 1



Efficiency SE: 40.10 TE: 50.00



PREFERRED VENDOR MOTOR DATA SHEET

Motor Part Number: 925047

Nameplate Data

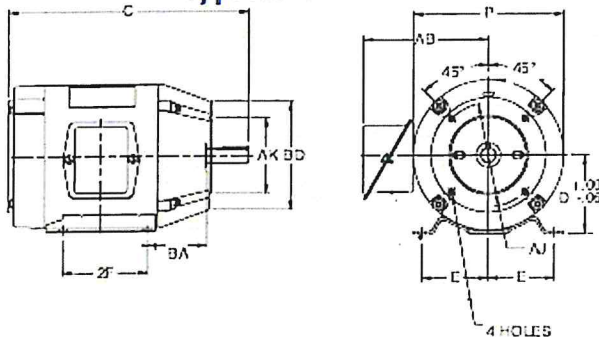
Horsepower: 3.0 (3 Hp) M	Motor Control VFD
Volts: 208, 230, 460	Compatibility:
Amps: 9.0/8.4/4.2	Efficiency: NEMA Premium Efficiency - Table 12-12
Service Factor Amps: 10.4/9.7/4.8	Efficiency Percent: 89.50
Service Factor: 1.15	Ambient Temperature: 40
Hertz: 60/60/60	Frame: 182T
Phase: 3	WR2: 71.00
Speed/Winding: 1SPD	Nameplate RPM: 1760
Enclosure: TEFC	Insulation Class: F
LRA: 32.00	Nominal RPM(60Hz): 1750/1750/1750
Power Factor: 75.00	Synch RPM(60Hz): 1800/1800/1800
Small Motor Rule: N/A	
SE Rating:	Class 1 Groups:
Class 2 Groups:	Division:
Temp Code:	

Features

Bearing Type: Ball	Motor Plug: No
Motor Rotation: Clockwise	Base: RIG
VSM: False	Duty: C
Thermal Overload: N	End Bell Drain: No
NEMA Code: B	F2: No

Dimensions and Weight

Typical C-Face Motor



Ab: 6.870000	C: 16.550000	D: 4.500000
E: 3.750000	F: 2.250000	H: 0.468700
L: 8.300000	Sd: 1.125000	V: 2.750000

Unit Weight: 72

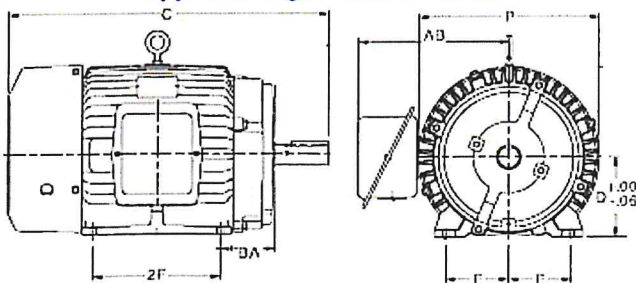
Keyway: 1/4x1/8x1 3/4

Shaft Diameter: 1.125000

Metric Keyway: .635x.318x4.445

Motor Notes

Typical Rigid Base Motor





TAG: EF-1,3

Project: CNE Hard Rock Buffet Kitchen Fans
Location: Tulsa, OK

Acme Engineering and Manufacturing Corporation

P.O. Box 978, Muskogee, OK 74402

Print Date: 2/27/2025 1:23:16 PM

GTR

Grease Trough Roof

Standard Construction Features

Approximant Capacity 2.6 Gal.
Compartmentalized to separate grease/water
Mounted easily to roof type ventilators
Galvanized steel construction

699593 - PNU355-490 Roof Grease Trough With Adapter

PERFORMANCE (Altitude = 0 ft, Temp = 0 Degrees F, Density = 0.000 lb/ft³)

Qty	Model Size
2	PNU355-490

Weight (lbs)
26.00



COOK



MARK: KEF-1

PROJECT: HARD ROCK CASINO 124

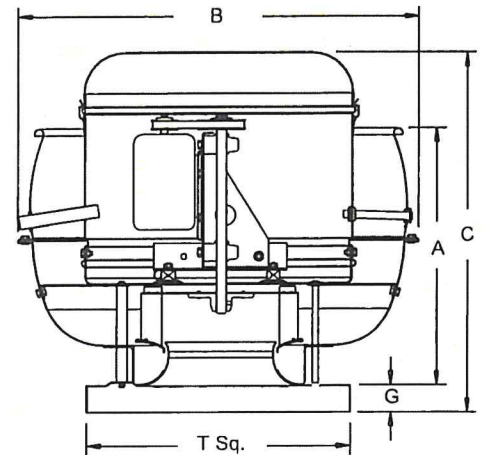
DATE: 2/26/2025

ACRU-HP

**Upblast Centrifugal
Exhaust Ventilator
Roof Mounted/Belt Drive**

STANDARD CONSTRUCTION FEATURES:

All aluminum housing - Backward inclined all aluminum wheel - Two piece top cap with stainless steel quick release latches - One piece bottom spinning - Welded curb cap corners - Birdscreen - Vibration isolators - Lifting Lugs - Permanently lubricated ball bearing motors - Oil and heat resistant, static conducting belts - Adjustable pitch drives through 5 hp motor - Corrosion resistant fasteners - Regreasable bearings in a cast iron pillow block housing, rated at 200,000 hours average life - All fans factory adjusted to specified fan RPM - Transit tested packaging. Standard motors ship factory installed.



Performance (*Bhp includes 9% drive loss)

Qty	Catalog Number	Flow (CFM)	SP (inwc)	Fan RPM	Power* (HP)	FEG
1	150RH5B	1000	1.00	1527	.394	n/a(<1HP)

Altitude (ft): 676 Temperature (F): 70

Motor Information

HP	RPM	Volts/Ph/Hz	Enclosure	FLA	Mounted
1/2	1725	115/1/60	TEFC -SE	9.8	Yes

FLA based on NEC (2017) Table 430.248

Sound Data Inlet Sound Power by Octave Band

1	2	3	4	5	6	7	8	LwA	dBA	Sones
83	75	71	67	64	68	63	56	73	61	11.9

* Distance from Sound source 5 ft

Accessories:

DRIVES (1.5 SF) @ 1527 RPM
DISCONNECT NEMA 1 PRE-WIRED
BD-18 DAMPER
HINGED SUB BASE 24T
DRAIN TUBE (PLASTIC)
BELT TENSIONR-ROTARY

Dimensions (inches)

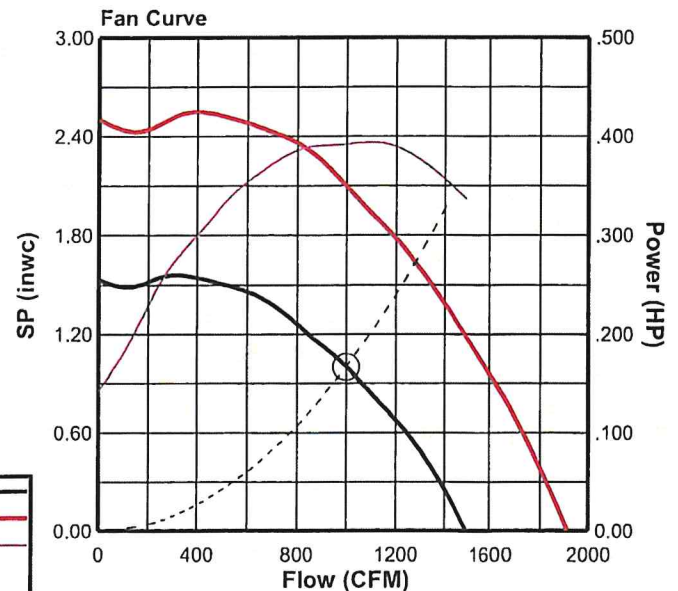
A	20-15/16
B	34-11/16
C	27-1/2
G	2
T Sq.	24
Roof Open. Sq.*	19-1/2

NOTE: Accessories may affect dimensions shown.

Weight(lbs)***	Shipping	113	Unit	98
----------------	----------	-----	------	----

* Roof opening size for curbs supplied by Cook only.

***Includes fan, motor & accessories.



Fan Curve Legend

CFM vs SP (1527)	—
MaxRPM(1952)	—
CFM vs HP	—
Point of Operation	○
System Curve	- - -



COOK



MARK: KEF-1

PROJECT: HARD ROCK CASINO 124

DATE: 2/26/2025

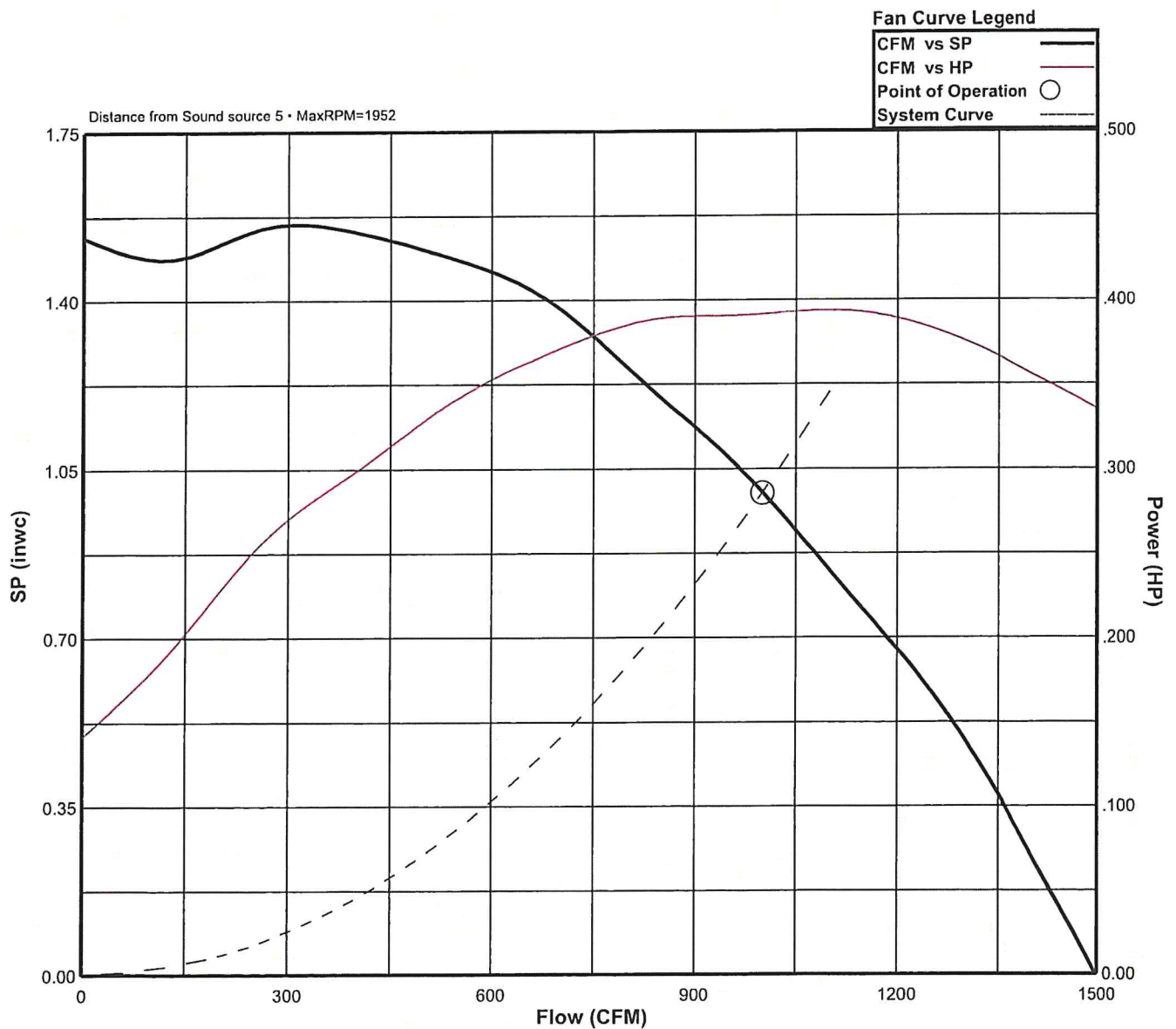
ACRU-HP

Performance (*Bhp includes 9% drive loss)

Catalog Number	Flow (CFM)	SP (inwc)	Fan RPM	Power* (HP)	FEG	OVEL (fpm)	TSPD (fpm)	SE	Temp (°F)	ALT (ft)
150RH5B	1000	1.00	1527	.394	n/a(<1HP)	372	5996	44%	70	676

Sound Data Inlet Sound Power by Octave Band

1	2	3	4	5	6	7	8	LwA	dBA	Sones
83	75	71	67	64	68	63	56	73	61	11.9





COOK

PROJECT: HARD ROCK CASINO 124

DATE: 2/26/2025

BD

Gravity Backdraft Damper

STANDARD CONSTRUCTION FEATURES:

.020 Aluminum blades - .060 aluminum frame -
Aluminum hinge pins - Nylon bushings.

Notes:

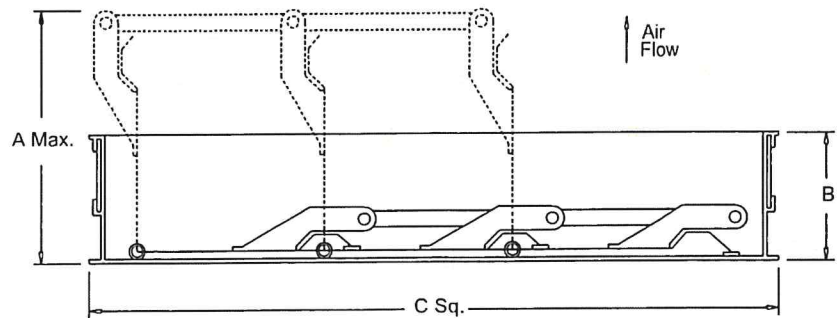
Max. operating temperature 200 Deg F (95 Deg C).

Max. discharge velocity 2000 fpm.

Sizes 36 thru 60 are shipped as 2 panels.

Sizes 66 and 78 are shipped as 6 panels.

These may require assembly.



Dimensions (inches)

Mark	Qty	Description	A Max.	B	C Sq.	# Panels
KEF-1	1	BD-18 DAMPER	5-3/16	1-7/8	17-3/4	1



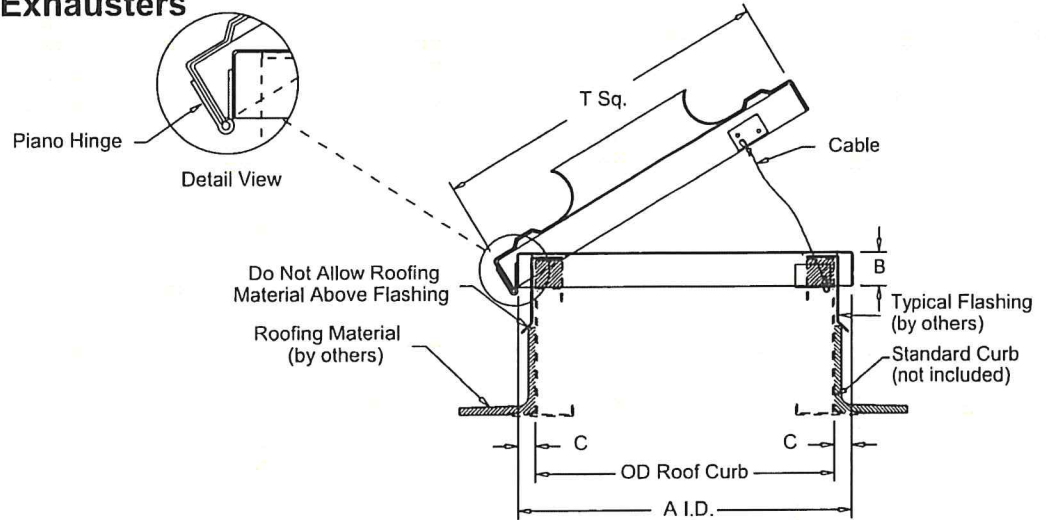
COOK

PROJECT: HARD ROCK CASINO 124

DATE: 2/26/2025

HINGED SUB BASE

Centrifugal Roof Exhausters



Dimensions (inches)

Mark	Qty	Description	A I.D.	B	C	Cable	OD Curb	T.Sq.
KEF-1	1	HINGED SUB BASE 24T	23-3/8	2-1/4	7/16	37	22-1/2	24



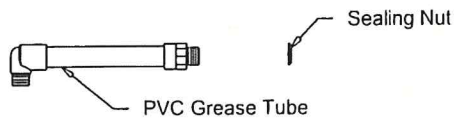
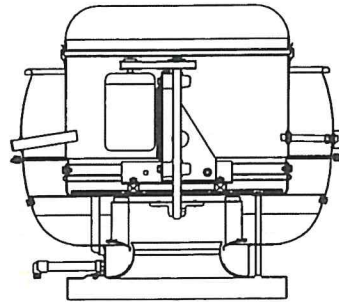
COOK

PROJECT: HARD ROCK CASINO 124

DATE: 2/26/2025

Grease Tube Plastic

Plastic Installation



Dimensions (inches)

Mark	Qty	Description
KEF-1	1	DRAIN TUBE (PLASTIC)



COOK



MARK: KEF-3

PROJECT: HARD ROCK CASINO 124

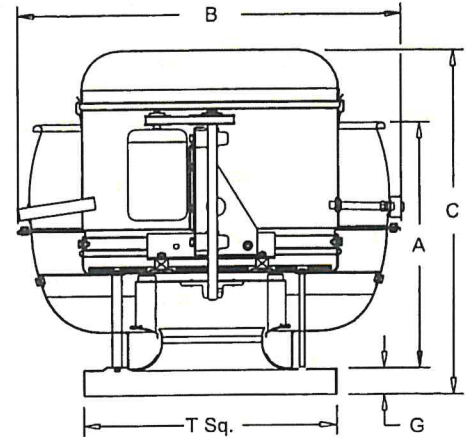
DATE: 2/26/2025

VCR-XP

Upblast Centrifugal Exhaust Ventilator Roof Mounted/Belt Drive

STANDARD CONSTRUCTION FEATURES:

All aluminum housing - Backward inclined all aluminum wheel - Two piece top cap with stainless steel quick release latches - One piece bottom spinning - Welded curb cap corners - Lifting Lugs - Permanently lubricated ball bearing motors - Oil and heat resistant, static conducting belts - Adjustable pitch drives through 5 hp motor - Corrosion resistant fasteners - Regreasable bearings in cast iron pillow block housing, rated at 200,000 hours average life - All fans factory adjusted to specified fan RPM - Transit tested packaging.



Performance (*Bhp includes 6% drive loss)

Qty	Catalog Number	Flow (CFM)	SP (inwc)	Fan RPM	Power* (HP)	FEG	FEI
1	165VX8B	1600	2.00	2300	1.17	60	1.07

Altitude (ft): 676 Temperature (F): 70

Motor Information

HP	RPM	Volts/Ph/Hz	Enclosure	FLA	Mounted	VFD Rated
1-1/2	1725	460/3/60	TEFC -PE	3	No	Yes

NEMA Premium® efficiency motor per MG-1 (2014) Table 12-12
FLA based on NEC (2017) Table 430.250

Sound Data Inlet Sound Power by Octave Band

1	2	3	4	5	6	7	8	LwA	dBA	Sones
77	83	86	85	78	75	73	70	86	74	23

- Distance from Sound source 5 ft

Accessories:

Premium Efficiency Motor (Min. 86.5%)
DRIVES (1.5 SF) @ 2300 RPM
DISCONNECT NEMA 3 PRE-WIRED
UL762 (327Y-300DEG)
HINGED SUB BASE 24T
KEYWAY GREASE TROUGH
BELT TENSIONER-ROTARY

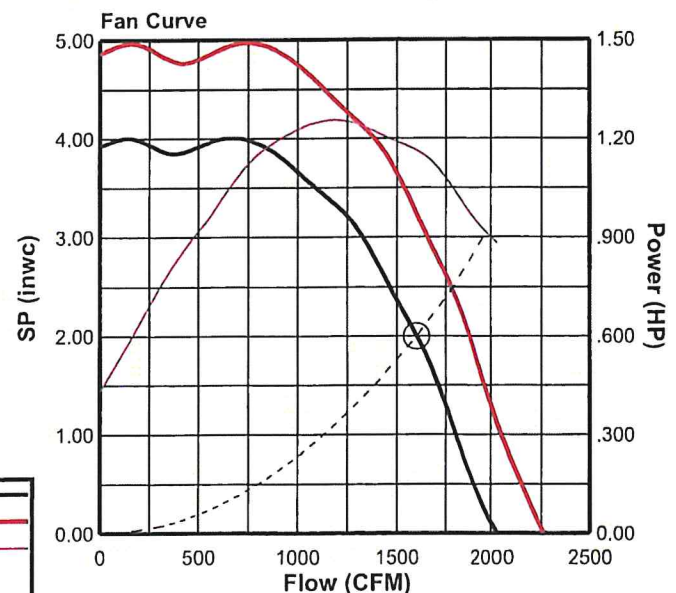
Dimensions (inches)

A	20-15/16
B	34-11/16
C	26-11/16
G	2
T Sq.	24
Roof Open. Sq.*	19-1/2

NOTE: Accessories may affect dimensions shown.

Weight(lbs)***	Shipping	157	Unit	132
----------------	----------	-----	------	-----

*Roof opening size for curbs supplied by Cook only.
***Includes fan, motor & accessories.





COOK



MARK: KEF-3

PROJECT: HARD ROCK CASINO 124

DATE: 2/26/2025

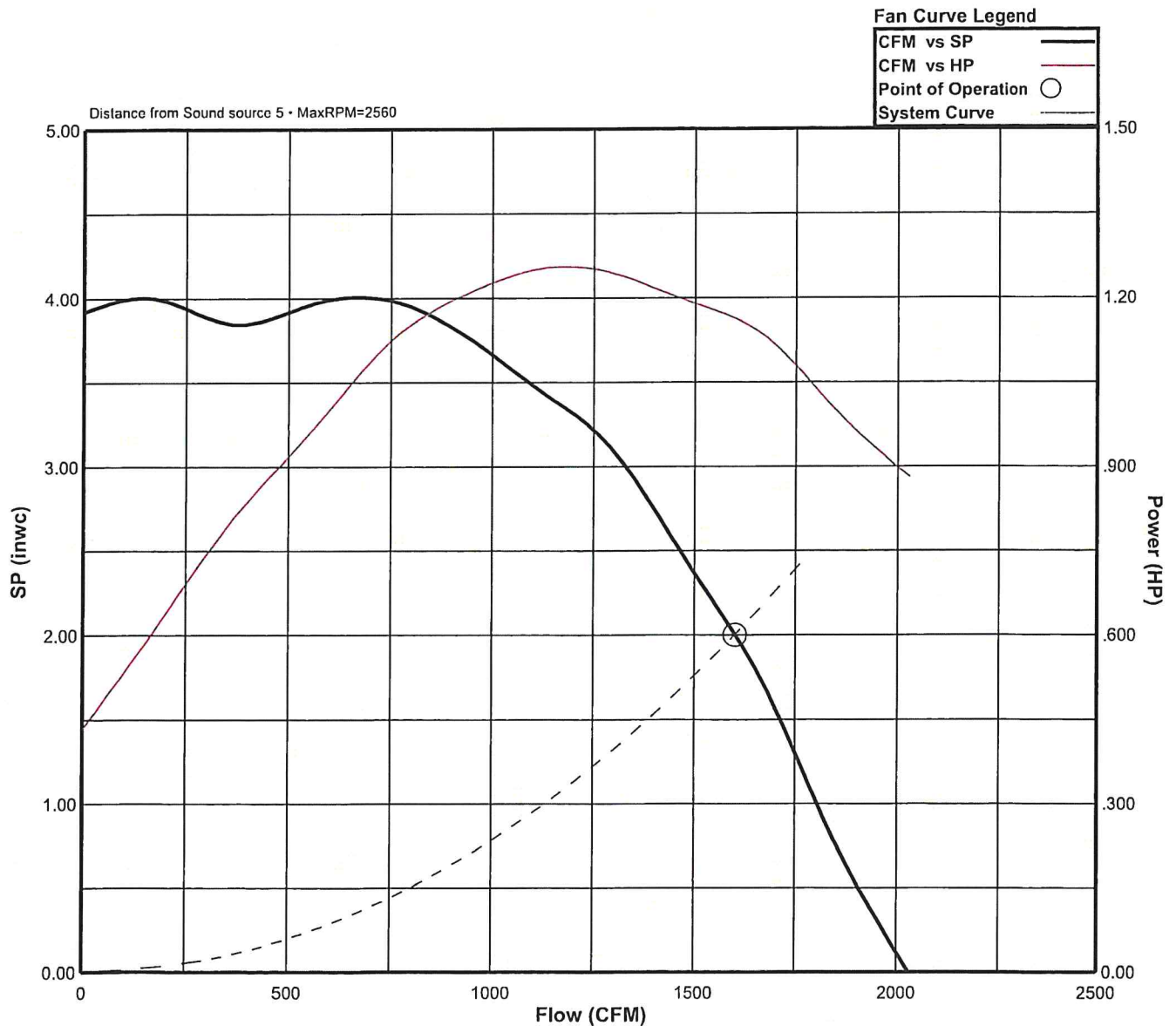
VCR-XP

Performance (*Bhp includes 6% drive loss)

Catalog Number	Flow (CFM)	SP (inwc)	Fan RPM	Power* (HP)	FEG	FEI	OVEL (fpm)	TSPD (fpm)	SE	Temp (°F)	ALT (ft)
165VX8B	1600	2.00	2300	1.17	60	1.07	596	9935	46%	70	676

Sound Data Inlet Sound Power by Octave Band

1	2	3	4	5	6	7	8	LwA	dBA	Sones
77	83	86	85	78	75	73	70	86	74	23





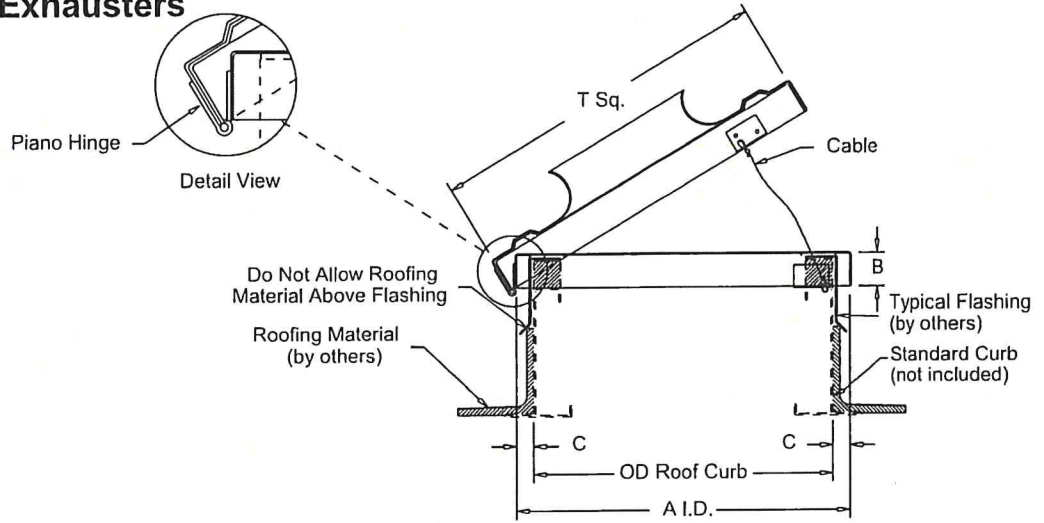
COOK

PROJECT: HARD ROCK CASINO 124

DATE: 2/26/2025

HINGED SUB BASE

Centrifugal Roof Exhausters



Dimensions (inches)

Mark	Qty	Description	A I.D.	B	C	Cable	OD Curb	T.Sq.
KEF-3	1	HINGED SUB BASE 24T	23-3/8	2-1/4	7/16	37	22-1/2	24



COOK

PROJECT: HARD ROCK CASINO 124

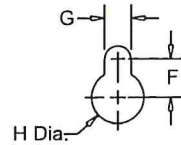
DATE: 2/26/2025

Grease Trough

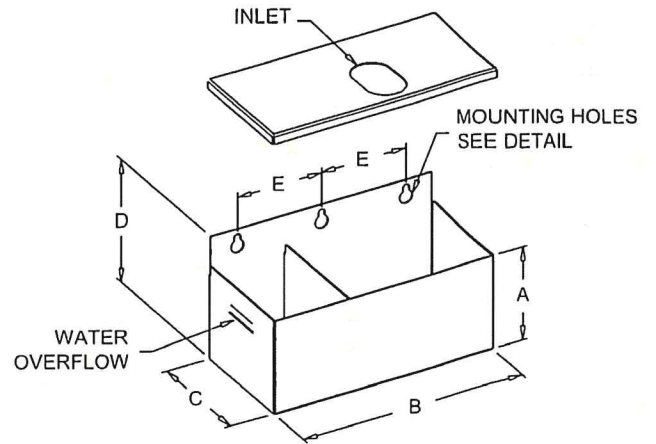
Keyway Mount

STANDARD CONSTRUCTION FEATURES:

All aluminum .063 construction - Continuously welded trough housing corners - Removable lid for servicing - Slotted mounting holes for easy removal - Baffled design for extended capacity.



MOUNTING HOLE DETAIL



Dimensions (inches)

Mark	Qty	Description	A	B	C	D	E	F	G	H Dia.
KEF-3	1	KEYWAY GREASE TROUGH	5	12	6-1/16	6-1/2	4-1/2	1/2	3/8	11/16



COOK



MARK: KEF-4

PROJECT: HARD ROCK CASINO 124

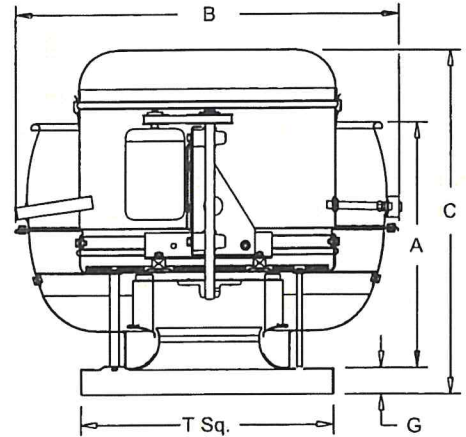
DATE: 2/26/2025

VCR-HP

Upblast Centrifugal Exhaust Ventilator Roof Mounted/Belt Drive

STANDARD CONSTRUCTION FEATURES:

All aluminum housing - Backward inclined all aluminum wheel - Two piece top cap with stainless steel quick release latches - One piece bottom spinning - Welded curb cap corners - Lifting Lugs - Permanently lubricated ball bearing motors - Oil and heat resistant, static conducting belts - Adjustable pitch drives through 5 hp motor - Corrosion resistant fasteners - Regreasable bearings in cast iron pillow block housing, rated at 200,000 hours average life - All fans factory adjusted to specified fan RPM - Transit tested packaging.



Performance (*Bhp includes 5% drive loss)

Qty	Catalog Number	Flow (CFM)	SP (inwc)	Fan RPM	Power* (HP)	FEG	FEI
1	180VH9B	2800	2.00	1636	1.55	67	1.27

Altitude (ft): 676 Temperature (F): 70

Motor Information

HP	RPM	Volts/Ph/Hz	Enclosure	FLA	Mounted	VFD Rated
2	1725	460/3/60	TEFC -PE	3.4	Yes	Yes

NEMA Premium® efficiency motor per MG-1 (2014) Table 12-12
FLA based on NEC (2017) Table 430.250

Sound Data Inlet Sound Power by Octave Band

1	2	3	4	5	6	7	8	LwA	dBA	Sones
83	86	81	78	74	75	73	67	82	70	20

* Distance from Sound source 5 ft

Accessories:

Premium Efficiency Motor (Min. 86.5%)
DRIVES (1.5 SF) @ 1636 RPM
DISCONNECT NEMA 3 PRE-WIRED
UL762 (327Y-300DEG)
HINGED SUB BASE 30T
KEYWAY GREASE TROUGH
BELT TENSIONNR-ROTARY

Dimensions (inches)

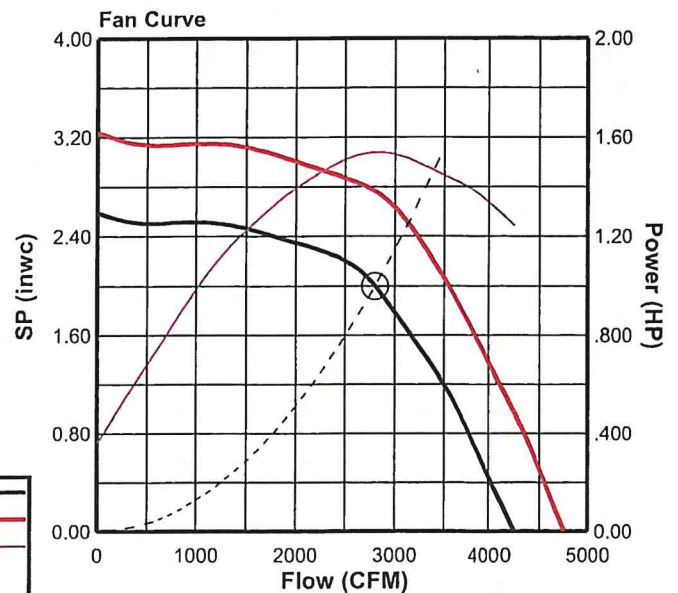
A	24-13/16
B	39-7/16
C	33-3/8
G	3
T Sq.	30
Roof Open. Sq.*	25-1/2

NOTE: Accessories may affect dimensions shown.

Weight(lbs)***	Shipping	189	Unit	158
----------------	----------	-----	------	-----

* Roof opening size for curbs supplied by Cook only.

***Includes fan, motor & accessories.





COOK



MARK: KEF-4

PROJECT: HARD ROCK CASINO 124

DATE: 2/26/2025

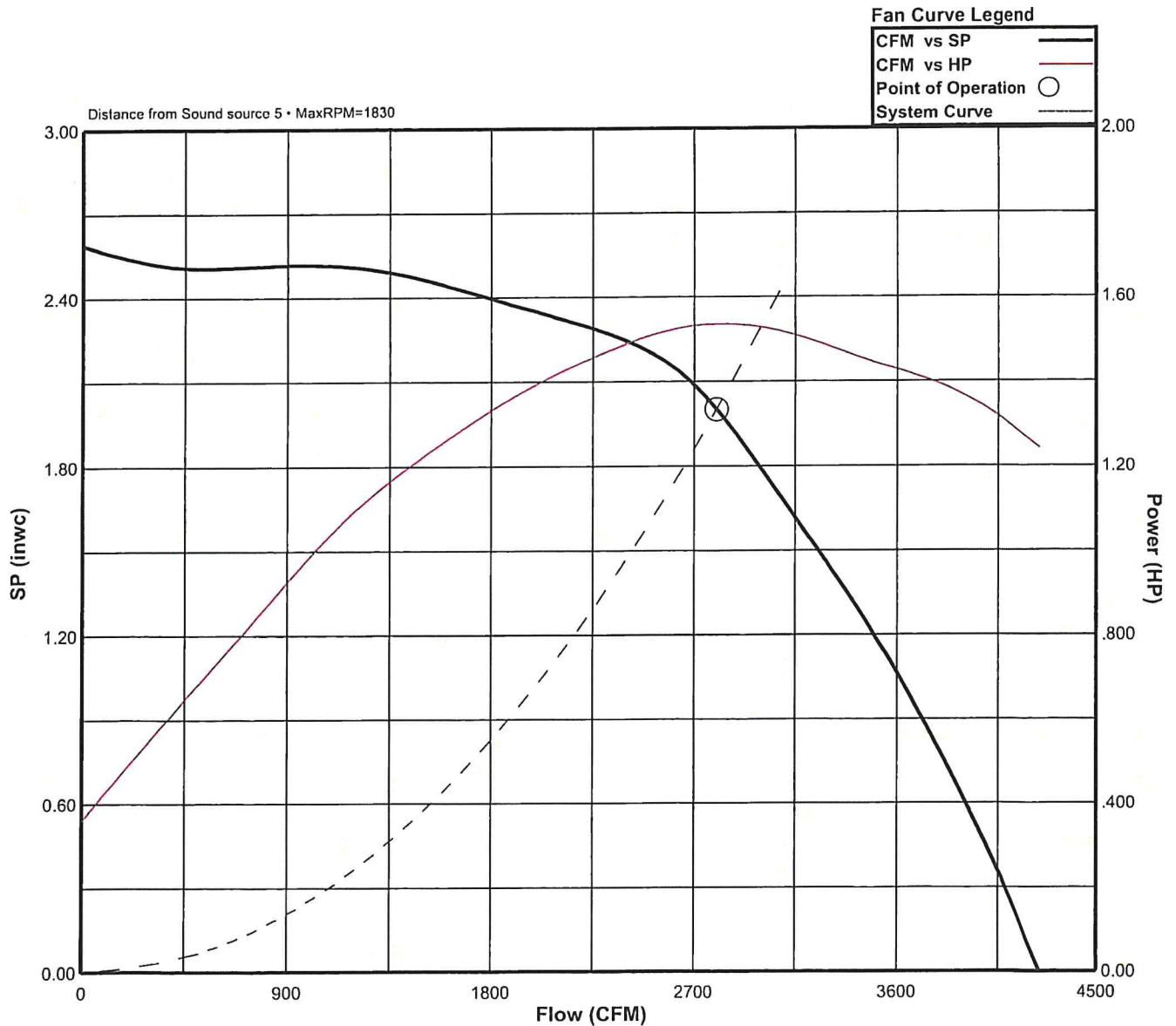
VCR-HP

Performance (*Bhp includes 5% drive loss)

Catalog Number	Flow (CFM)	SP (inwc)	Fan RPM	Power* (HP)	FEG	FEI	OVEL (fpm)	TSPD (fpm)	SE	Temp (°F)	ALT (ft)
180VH9B	2800	2.00	1636	1.55	67	1.27	725	7709	60%	70	676

Sound Data Inlet Sound Power by Octave Band

1	2	3	4	5	6	7	8	LwA	dBA	Sones
83	86	81	78	74	75	73	67	82	70	20





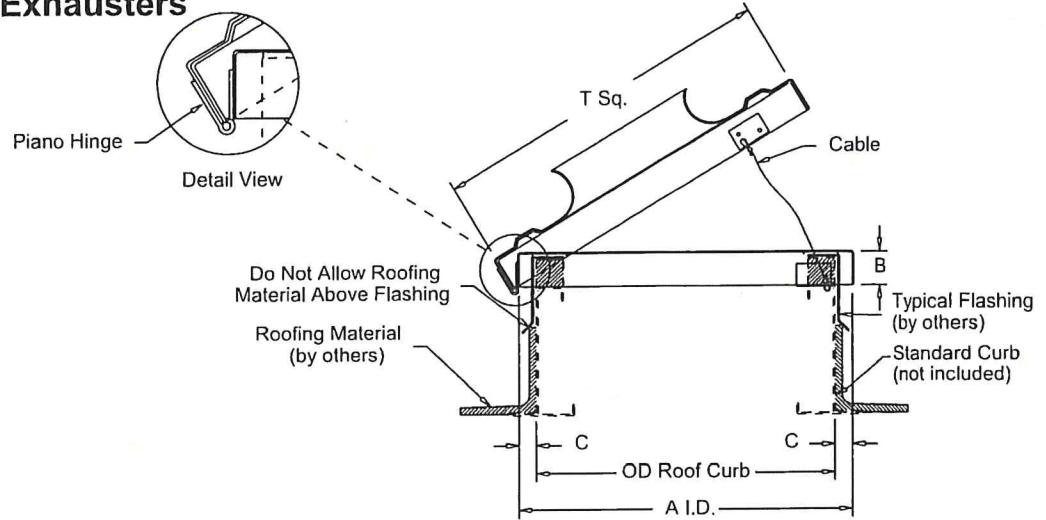
COOK

PROJECT: HARD ROCK CASINO 124

DATE: 2/26/2025

HINGED SUB BASE

Centrifugal Roof Exhausters



Dimensions (inches)

Mark	Qty	Description	A I.D.	B	C	Cable	OD Curb	T.Sq.
KEF-4	1	HINGED SUB BASE 30T	29-3/8	3-1/4	7/16	46	28-1/2	30



COOK

PROJECT: HARD ROCK CASINO 124

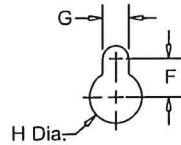
DATE: 2/26/2025

Grease Trough

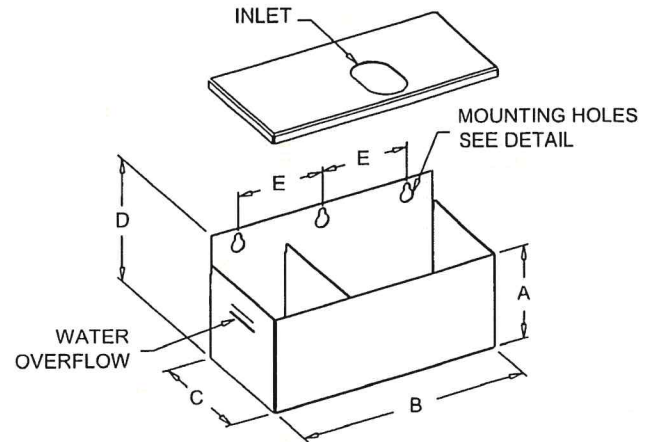
Keyway Mount

STANDARD CONSTRUCTION FEATURES:

All aluminum .063 construction - Continuously welded trough housing corners - Removable lid for servicing - Slotted mounting holes for easy removal - Baffled design for extended capacity.



MOUNTING HOLE DETAIL



Dimensions (inches)

Mark	Qty	Description	A	B	C	D	E	F	G	H Dia.
KEF-4	1	KEYWAY GREASE TROUGH	5	12	6-1/16	6-1/2	4-1/2	1/2	3/8	11/16



COOK



MARK: KEF-5

PROJECT: HARD ROCK CASINO 124

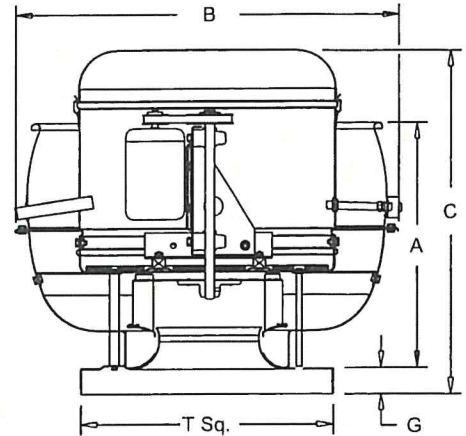
DATE: 2/26/2025

VCR-XP

Upblast Centrifugal Exhaust Ventilator Roof Mounted/Belt Drive

STANDARD CONSTRUCTION FEATURES:

All aluminum housing - Backward inclined all aluminum wheel - Two piece top cap with stainless steel quick release latches - One piece bottom spinning - Welded curb cap corners - Lifting Lugs - Permanently lubricated ball bearing motors - Oil and heat resistant, static conducting belts - Adjustable pitch drives through 5 hp motor - Corrosion resistant fasteners - Regreasable bearings in cast iron pillow block housing, rated at 200,000 hours average life - All fans factory adjusted to specified fan RPM - Transit tested packaging.



Performance (*Bhp includes 6% drive loss)

Qty	Catalog Number	Flow (CFM)	SP (inwc)	Fan RPM	Power* (HP)	FEG	FEI
1	165VX8B	1600	2.00	2300	1.17	60	1.07

Altitude (ft): 676 Temperature (F): 70

Motor Information

HP	RPM	Volts/Ph/Hz	Enclosure	FLA	Mounted	VFD Rated
1-1/2	1725	460/3/60	TEFC -PE	3	No	Yes

NEMA Premium® efficiency motor per MG-1 (2014) Table 12-12
FLA based on NEC (2017) Table 430.250

Sound Data Inlet Sound Power by Octave Band

1	2	3	4	5	6	7	8	LWA	dBA	Sones
77	83	86	85	78	75	73	70	86	74	23

* Distance from Sound source 5 ft

Accessories:

Premium Efficiency Motor (Min. 86.5%)
DRIVES (1.5 SF) @ 2300 RPM
DISCONNECT NEMA 3 PRE-WIRED
UL762 (327Y-300DEG)
HINGED SUB BASE 24T
KEYWAY GREASE TROUGH
BELT TENSIONR-ROTARY

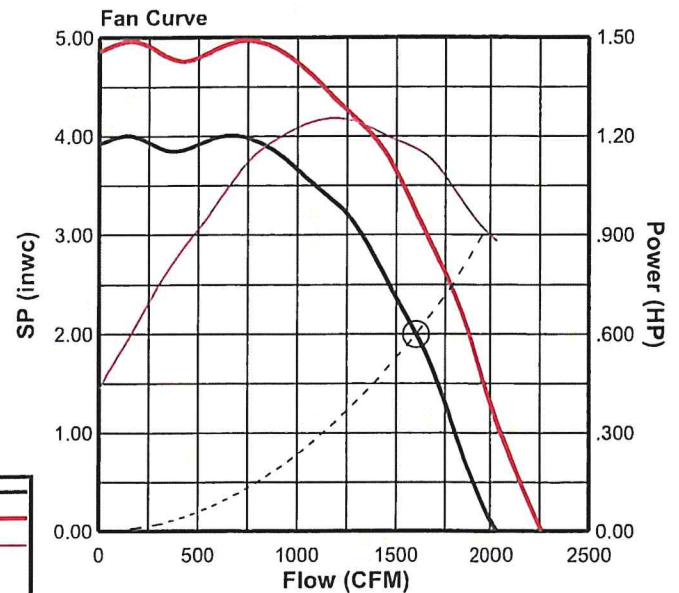
Dimensions (inches)

A	20-15/16
B	34-11/16
C	26-11/16
G	2
T Sq.	24
Roof Open. Sq.*	19-1/2

NOTE: Accessories may affect dimensions shown.

Weight(lbs)***	Shipping	157	Unit	132
----------------	----------	-----	------	-----

* Roof opening size for curbs supplied by Cook only.
***Includes fan, motor & accessories.





COOK



MARK: KEF-5

PROJECT: HARD ROCK CASINO 124

DATE: 2/26/2025

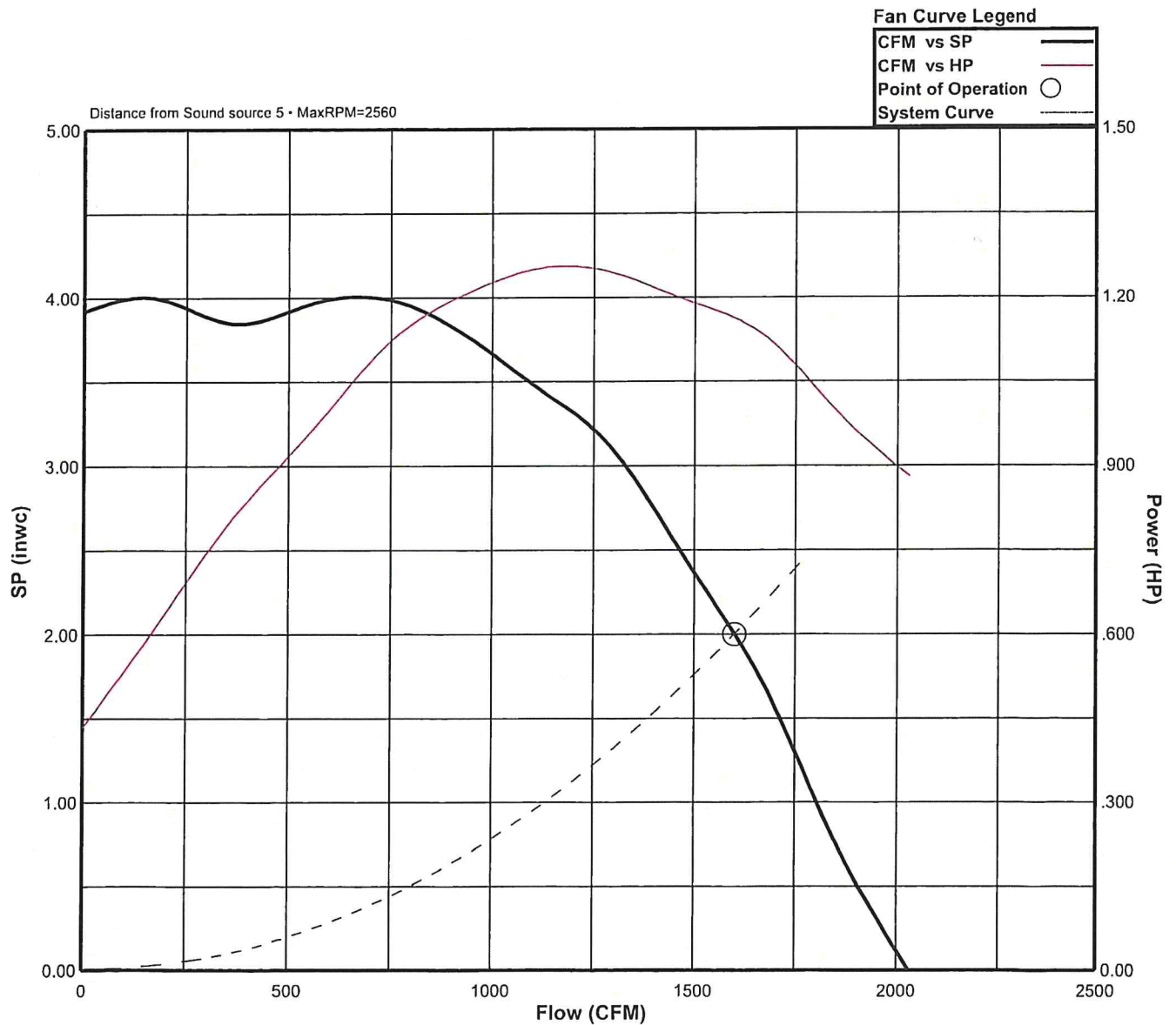
VCR-XP

Performance (*Bhp includes 6% drive loss)

Catalog Number	Flow (CFM)	SP (inwc)	Fan RPM	Power* (HP)	FEG	FEI	OVEL (fpm)	TSPD (fpm)	SE	Temp (°F)	ALT (ft)
165VX8B	1600	2.00	2300	1.17	60	1.07	596	9935	46%	70	676

Sound Data Inlet Sound Power by Octave Band

1	2	3	4	5	6	7	8	LwA	dBA	Sones
77	83	86	85	78	75	73	70	86	74	23





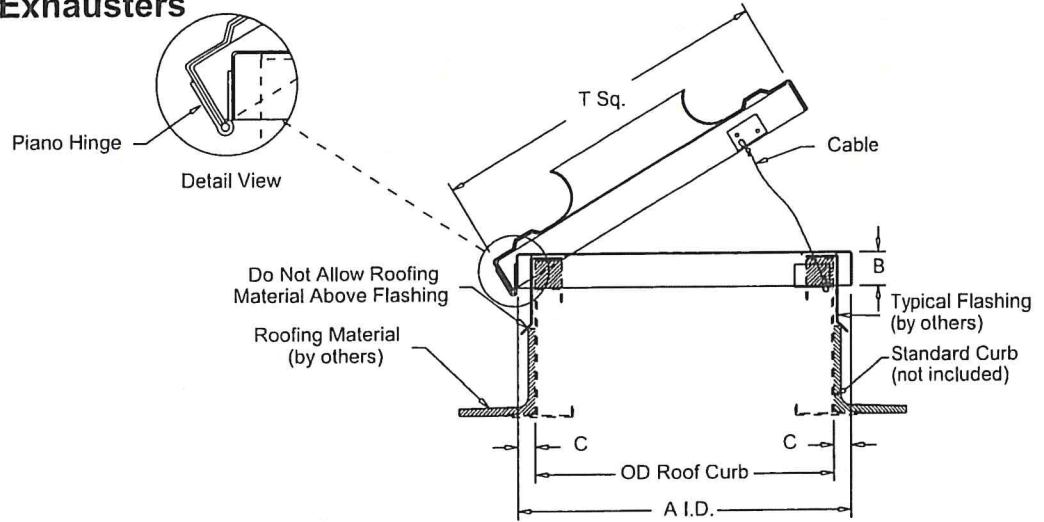
COOK

PROJECT: HARD ROCK CASINO 124

DATE: 2/26/2025

HINGED SUB BASE

Centrifugal Roof Exhausters



Dimensions (inches)

Mark	Qty	Description	A I.D.	B	C	Cable	OD Curb	T.Sq.
KEF-5	1	HINGED SUB BASE 24T	23-3/8	2-1/4	7/16	37	22-1/2	24



COOK

PROJECT: HARD ROCK CASINO 124

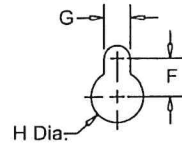
DATE: 2/26/2025

Grease Trough

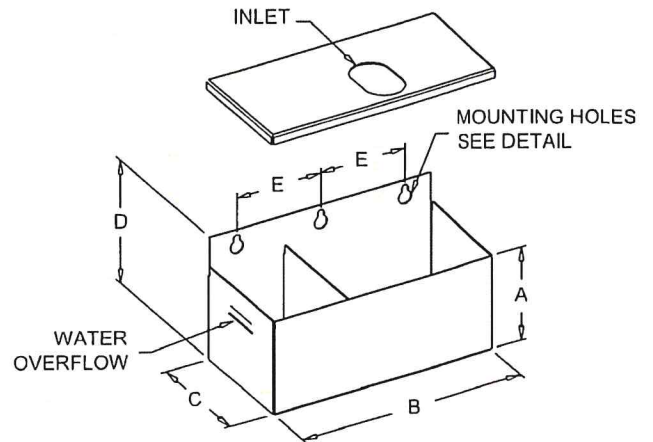
Keyway Mount

STANDARD CONSTRUCTION FEATURES:

All aluminum .063 construction - Continuously welded trough housing corners - Removable lid for servicing - Slotted mounting holes for easy removal - Baffled design for extended capacity.



MOUNTING HOLE DETAIL



Dimensions (inches)

Mark	Qty	Description	A	B	C	D	E	F	G	H Dia.
KEF-5	1	KEYWAY GREASE TROUGH	5	12	6-1/16	6-1/2	4-1/2	1/2	3/8	11/16



COOK



MARK: KEF-6

PROJECT: HARD ROCK CASINO 124

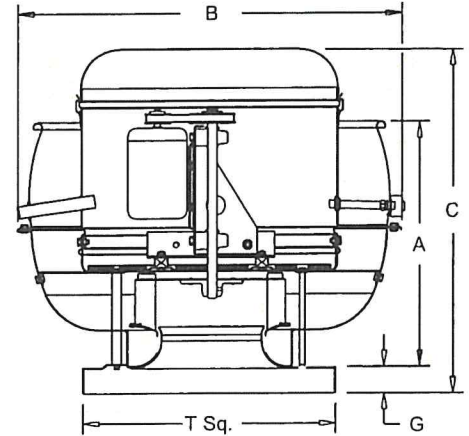
DATE: 2/26/2025

VCR-XP

Upblast Centrifugal Exhaust Ventilator Roof Mounted/Belt Drive

STANDARD CONSTRUCTION FEATURES:

All aluminum housing - Backward inclined all aluminum wheel - Two piece top cap with stainless steel quick release latches - One piece bottom spinning - Welded curb cap corners - Lifting Lugs - Permanently lubricated ball bearing motors - Oil and heat resistant, static conducting belts - Adjustable pitch drives through 5 hp motor - Corrosion resistant fasteners - Regreasable bearings in cast iron pillow block housing, rated at 200,000 hours average life - All fans factory adjusted to specified fan RPM - Transit tested packaging.



Performance (*Bhp includes 5% drive loss)

Qty	Catalog Number	Flow (CFM)	SP (inwc)	Fan RPM	Power* (HP)	FEG	FEI
1	210VX9B	2560	2.00	1794	1.80	56	1.02

Altitude (ft): 676 Temperature (F): 70

Motor Information

HP	RPM	Volts/Ph/Hz	Enclosure	FLA	Mounted	VFD Rated
2	1725	460/3/60	TEFC -PE	3.4	Yes	Yes

NEMA Premium® efficiency motor per MG-1 (2014) Table 12-12
FLA based on NEC (2017) Table 430.250

Sound Data Inlet Sound Power by Octave Band

1	2	3	4	5	6	7	8	LwA	dBA	Sones
77	86	86	81	77	75	76	71	85	73	23

- Distance from Sound source 5 ft

Accessories:

Premium Efficiency Motor (Min. 86.5%)
DRIVES (1.5 SF) @ 1794 RPM
DISCONNECT NEMA 3 PRE-WIRED
UL762 (327Y-300DEG)
HINGED SUB BASE 30T
KEYWAY GREASE TROUGH
BELT TENSIONR-ROTARY

Dimensions (inches)

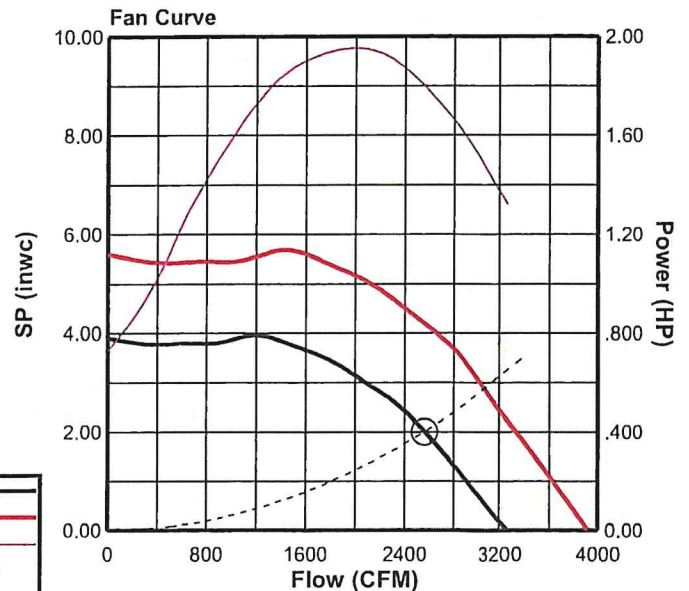
A	25-15/16
B	45-1/4
C	32-3/4
G	3
T Sq.	30
Roof Open. Sq.*	25-1/2

NOTE: Accessories may affect dimensions shown.

Weight(lbs)***	Shipping	309	Unit	182
----------------	----------	-----	------	-----

* Roof opening size for curbs supplied by Cook only.

***Includes fan, motor & accessories.





COOK



MARK: KEF-6

PROJECT: HARD ROCK CASINO 124

DATE: 2/26/2025

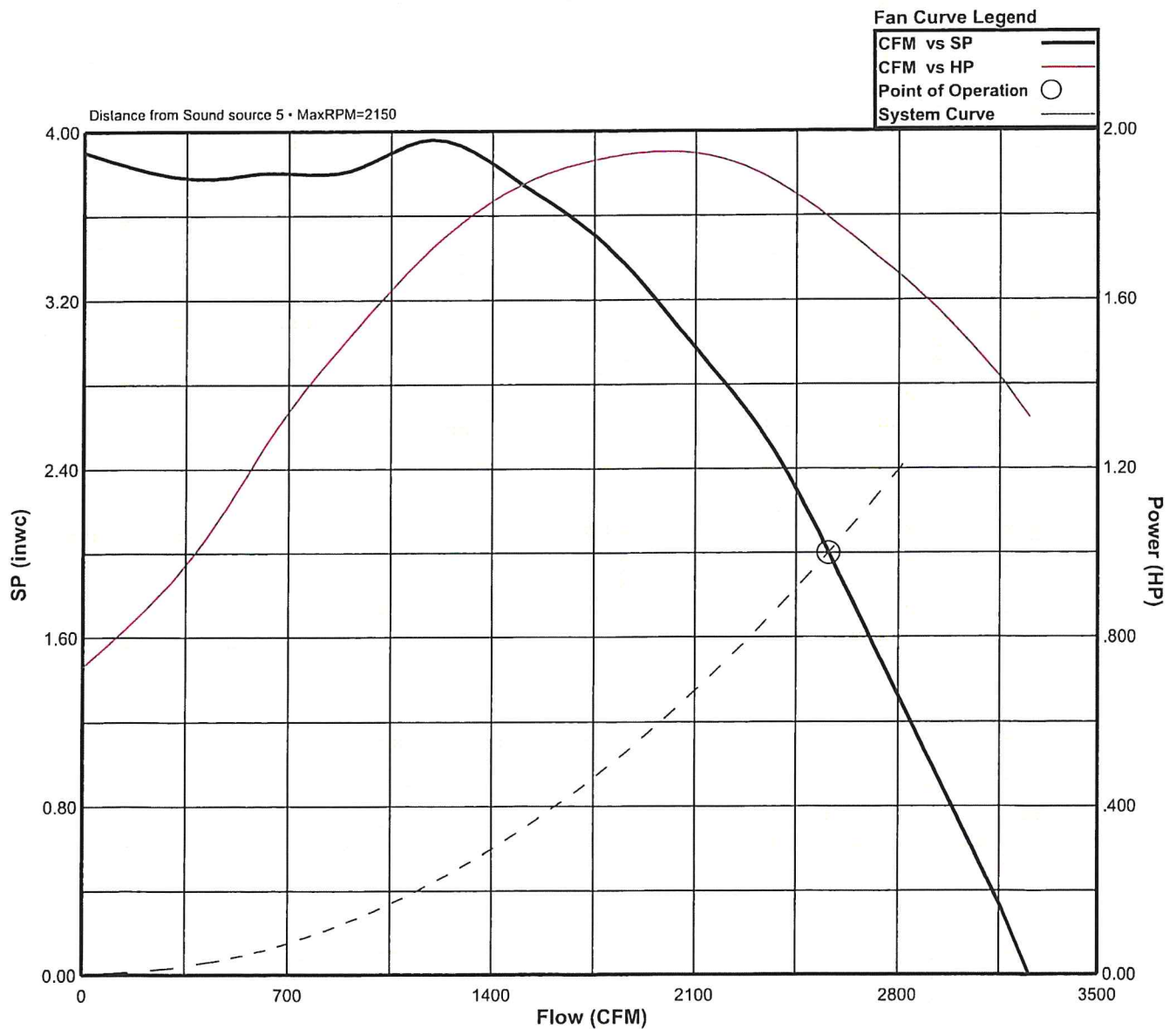
VCR-XP

Performance (*Bhp includes 5% drive loss)

Catalog Number	Flow (CFM)	SP (inwc)	Fan RPM	Power* (HP)	FEG	FEI	OVEL (fpm)	TSPD (fpm)	SE	Temp (°F)	ALT (ft)
210VX9B	2560	2.00	1794	1.80	56	1.02	489	9863	47%	70	676

Sound Data Inlet Sound Power by Octave Band

1	2	3	4	5	6	7	8	LwA	dBA	Sones
77	86	86	81	77	75	76	71	85	73	23





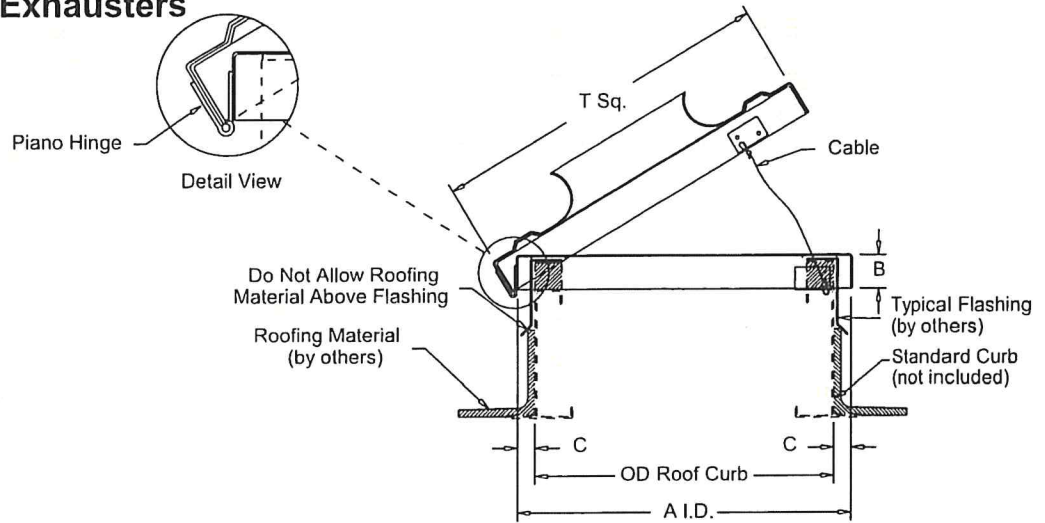
COOK

PROJECT: HARD ROCK CASINO 124

DATE: 2/26/2025

HINGED SUB BASE

Centrifugal Roof Exhausters



Dimensions (inches)

Mark	Qty	Description	A I.D.	B	C	Cable	OD Curb	T.Sq.
KEF-6	1	HINGED SUB BASE 30T	29-3/8	3-1/4	7/16	46	28-1/2	30



COOK

PROJECT: HARD ROCK CASINO 124

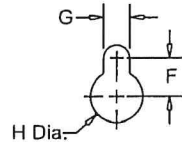
DATE: 2/26/2025

Grease Trough

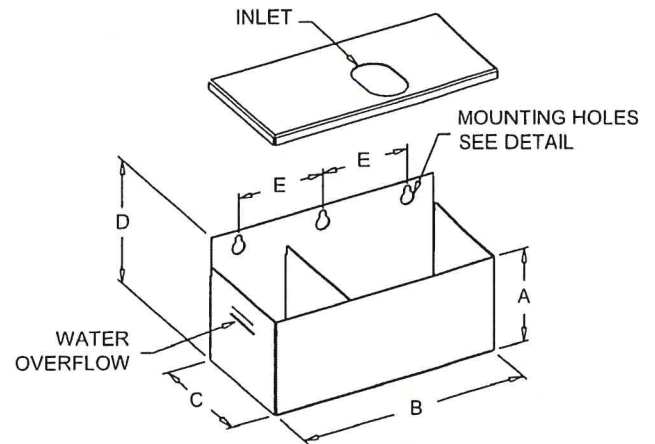
Keyway Mount

STANDARD CONSTRUCTION FEATURES:

All aluminum .063 construction - Continuously welded trough housing corners - Removable lid for servicing - Slotted mounting holes for easy removal - Baffled design for extended capacity.



MOUNTING HOLE DETAIL



Dimensions (inches)

Mark	Qty	Description	A	B	C	D	E	F	G	H Dia.
KEF-6	1	KEYWAY GREASE TROUGH	5	12	6-1/16	6-1/2	4-1/2	1/2	3/8	11/16



COOK



MARK: KEF-8

PROJECT: HARD ROCK CASINO 124

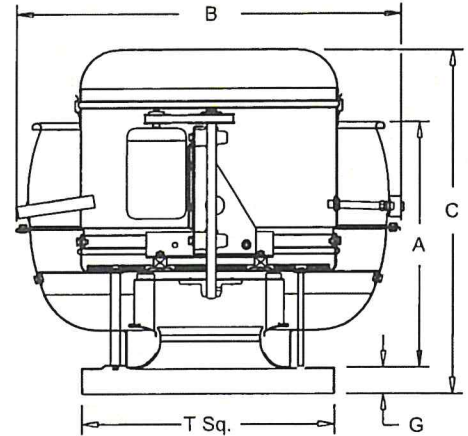
DATE: 2/26/2025

VCR-HP

**Upblast Centrifugal
Exhaust Ventilator
Roof Mounted/Belt Drive**

STANDARD CONSTRUCTION FEATURES:

All aluminum housing - Backward inclined all aluminum wheel - Two piece top cap with stainless steel quick release latches - One piece bottom spinning - Welded curb cap corners - Lifting Lugs - Permanently lubricated ball bearing motors - Oil and heat resistant, static conducting belts - Adjustable pitch drives through 5 hp motor - Corrosion resistant fasteners - Regreasable bearings in cast iron pillow block housing, rated at 200,000 hours average life - All fans factory adjusted to specified fan RPM - Transit tested packaging.



Performance

Qty	Catalog Number	Flow (CFM)	SP (inwc)	Fan RPM	Power (HP)	FEG	FEI
1	365VH12B	12440	2.25	858	7.38	63	1.19

Altitude (ft): 676 Temperature (F): 70

Motor Information

HP	RPM	Volts/Ph/Hz	Enclosure	FLA	Mounted	VFD Rated
7-1/2	1725	460/3/60	TEFC -PE	11	Yes	Yes

NEMA Premium® efficiency motor per MG-1 (2014) Table 12-12
FLA based on NEC (2017) Table 430.250

Sound Data Inlet Sound Power by Octave Band

1	2	3	4	5	6	7	8	LwA	dBA	Sones
88	91	91	88	83	79	75	70	90	78	29

- Distance from Sound source 5 ft

Accessories:

Premium Efficiency Motor (Min. 91.7%)
DRIVES (1.5 SF) @ 858 RPM
REINFORCED WHEEL
DISCONNECT NEMA 3 PRE-WIRED
UL762 (327Y-300DEG)
HINGED SUB BASE 42T
KEYWAY GREASE TROUGH
BELT TENSIONR-ROTARY

Dimensions (inches)

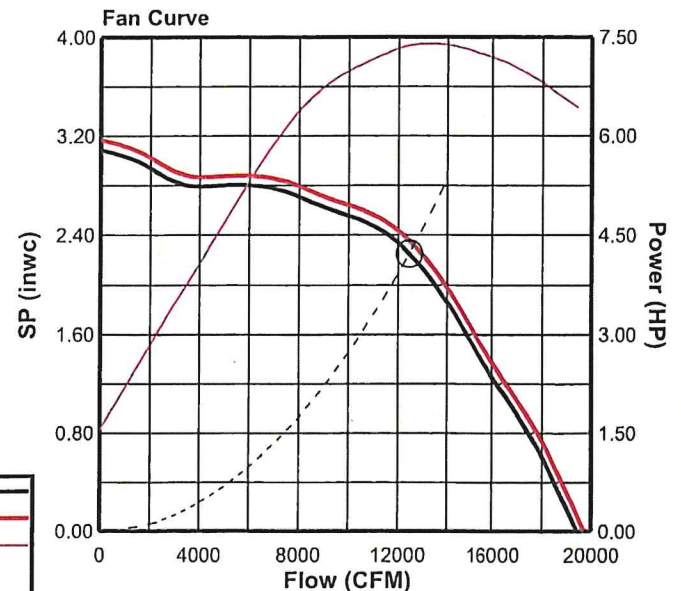
A	36-3/8
B	64-1/4
C	48-7/16
G	3
T Sq.	42
Roof Open. Sq.*	37-1/2

NOTE: Accessories may affect dimensions shown.

Weight(lbs)***	Shipping	625	Unit	416
----------------	----------	-----	------	-----

* Roof opening size for curbs supplied by Cook only.

***Includes fan, motor & accessories.





COOK



MARK: KEF-10 8

PROJECT: HARD ROCK CASINO 124

DATE: 2/26/2025

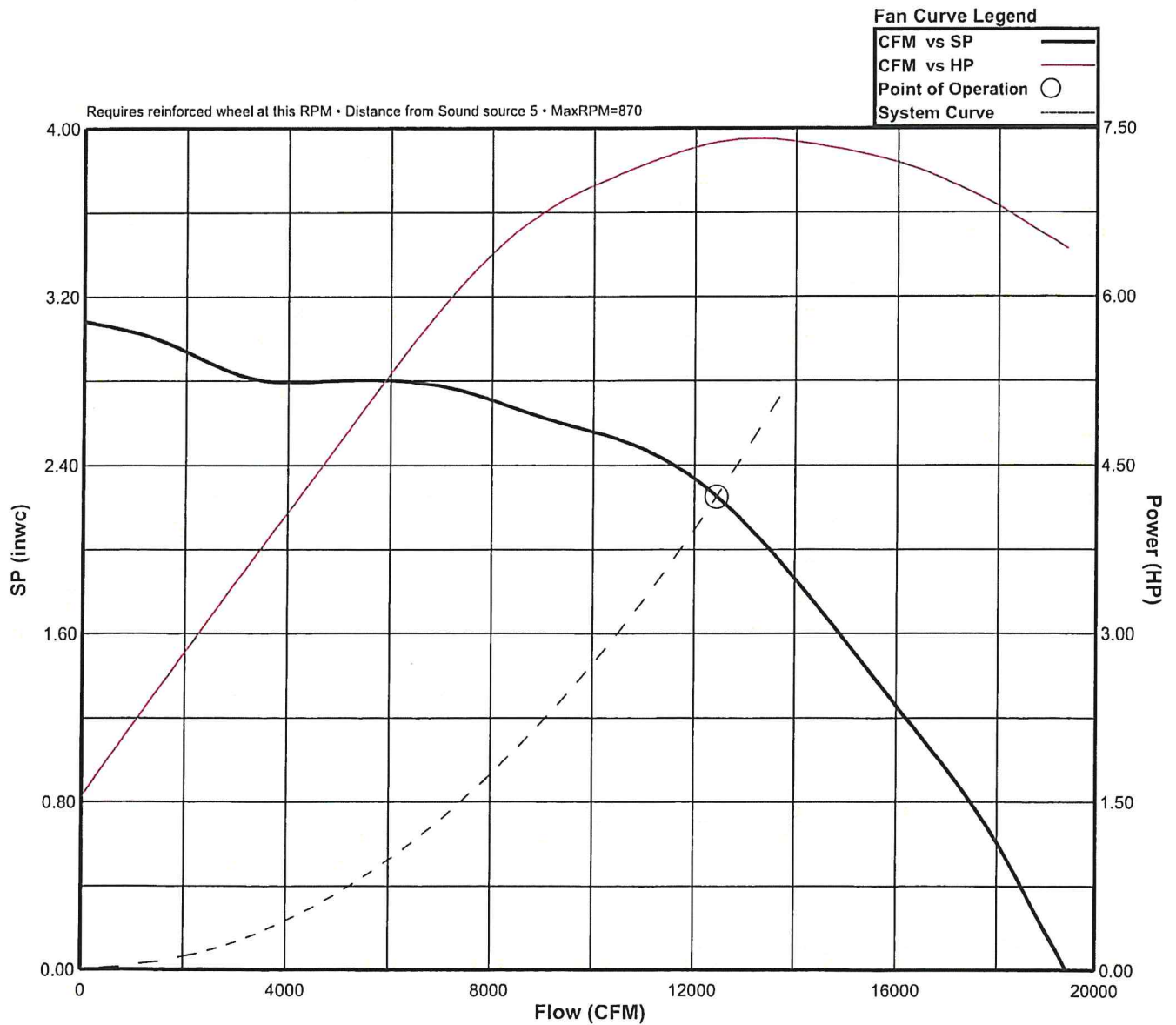
VCR-HP

Performance

Catalog Number	Flow (CFM)	SP (inwc)	Fan RPM	Power (HP)	FEG	FEI	OVEL (fpm)	TSPD (fpm)	SE	Temp (°F)	ALT (ft)
365VH12B	12440	2.25	858	7.38	63	1.19	1271	8198	60%	70	676

Sound Data Inlet Sound Power by Octave Band

1	2	3	4	5	6	7	8	LwA	dBA	Sones
88	91	91	88	83	79	75	70	90	78	29





COOK

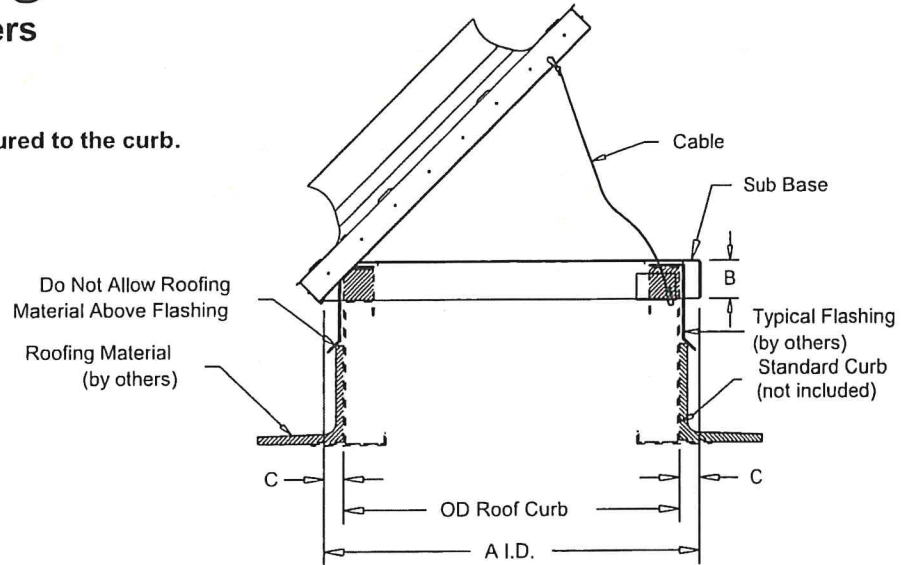
PROJECT: HARD ROCK CASINO 124

DATE: 2/26/2025

Heavy Duty Hinged Base Centrifugal Roof Exhausters

Note:

To avoid injury, sub base must be secured to the curb.



Dimensions (inches)

Mark	Qty	Description	A I.D.	B	C	Cable	OD Curb	T.Sq.
KEF-1.	1	HINGED SUB BASE 42T	41-3/8	3	7/16	63	40-1/2	42



COOK

PROJECT: HARD ROCK CASINO 124

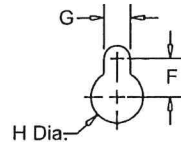
DATE: 2/26/2025

Grease Trough

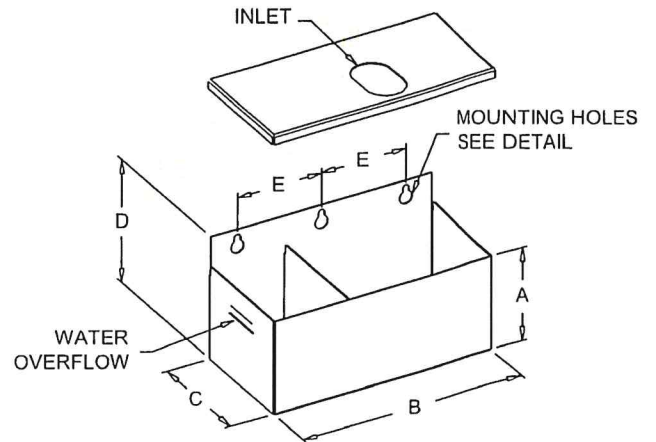
Keyway Mount

STANDARD CONSTRUCTION FEATURES:

All aluminum .063 construction - Continuously welded trough housing corners - Removable lid for servicing - Slotted mounting holes for easy removal - Baffled design for extended capacity.



MOUNTING HOLE DETAIL



Dimensions (inches)

Mark	Qty	Description	A	B	C	D	E	F	G	H Dia.
KEF-1.	1	KEYWAY GREASE TROUGH	5	12	6-1/16	6-1/2	4-1/2	1/2	3/8	11/16