



# CHEROKEE NATION COMMUNITY SERVICES / DEPARTMENT OF TRANSPORTATION

PLANS FOR

## NE FORT GIBSON ROAD

### TRIBAL TRANSPORTATION PROGRAM PROJECT NO. CN-0932-06 GRADING, DRAINAGE, SURFACING, AND BRIDGE PLANS

## MUSKOGEE/CHEROKEE COUNTY

LEVEL DATUM ESTABLISHED BY CHEROKEE NATION

#### DESIGN DATA

SIX MILE & COUNTY LINE ROADS

ADT 2017 = 400 VPD  
ADT 2037 = 600 VPD  
V = 40 MPH  
Flex ESALs = 0.1 M

#### VERTICAL CURVATURE (k VALUES)

CREST = 44 k (MIN)  
SAG = 64 k (MIN)

#### HORIZONTAL CURVATURE (RADIUS)

R = 444

#### MAXIMUM GRADE

ROLLING TERRAIN = 10%

#### DESIGN EXCEPTIONS

SIX MILE ROAD	
10+75.00 - 15+25.00	V=30 mph Sag k-Value = 37.55
10+85.58 - 12+27.62	R = 105'
15+25.00 - 16+75.00	V=25 mph Crest k-Value = 17.77
27+60.65 - 28+85.56	R = 105'
41+81.80 - 43+04.36	R = 105'
50+50.00 - 52+50.00	V=35 mph Crest k-Value = 42.93
57+00 - 59+00	Crest 35.3
70+43.92 - 176+50.00	Low Volume V=40 mph Sag k-Value= 64, Crest k-Value= 29
176+50.00 - 177+50.00	V=35 mph Crest k-Value = 25.59
COUNTY LINE ROAD	
57+00.00 - 59+00.00	V=35 mph Crest k-Value = 35.33
111+00.00 - 114+00.00	V=35 mph Crest k-Value = 34.01

#### DESIGN DATA

ROCKY TOP ROAD

ADT 2017 = 60 VPD  
ADT 2037 = 200 VPD  
V = 30 MPH  
Flex ESALs = 0.1 M

#### VERTICAL CURVATURE (k VALUES)

CREST = 13 k (MIN)  
SAG = 37 k (MIN)

#### HORIZONTAL CURVATURE (RADIUS)

R = 105

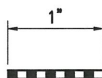
#### MAXIMUM GRADE

MOUNTAINOUS = 14%

#### DESIGN EXCEPTIONS

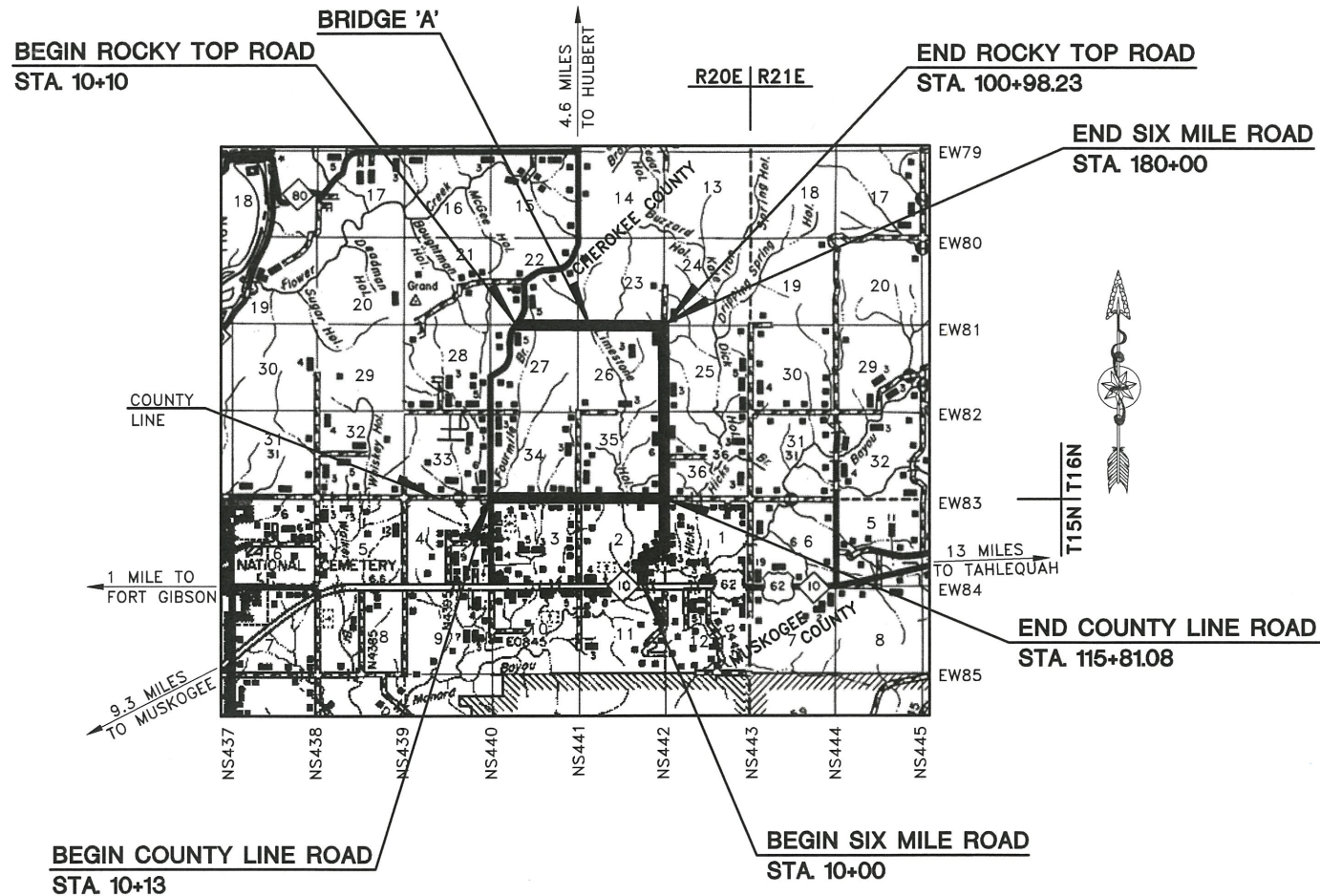
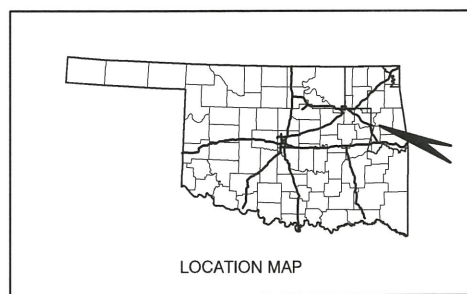
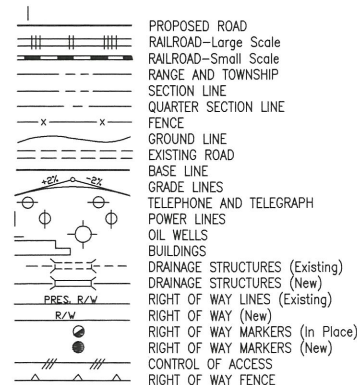
Sta.100+00 - 101+00 17.9 Sag

#### SCALES



PLAN 1" = 50'  
PROFILE HORIZ. 1" = 50'  
PROFILE VERT. 1" = 5'  
LAYOUT MAP 1" = 1 MILE

#### CONVENTIONAL SYMBOLS



#### DESIGN INFORMATION

SIX MILE ROAD	17000.00 FT.	3.219 MI
COUNTY LINE ROAD	10568.08 FT.	2.002 MI
ROCKY TOP ROAD	8875.85 FT.	1.681 MI
BRIDGE LENGTH	212.38 FT.	0.040 MI
PROJECT LENGTH		6.942 MI

#### INDEX OF SHEETS

TITLE SHEET	1
TYPICAL SECTION	2,2A
MISCELLANEOUS DETAILS	3,4A
MASSHAUL DIAGRAM	5-5C
SEDIMENT CONTROL PLAN & FENCING	6-10
STORMWATER MANAGEMENT PLAN	11
ENVIRONMENTAL COMMITMENT SHEET	11A
SEQUENCE OF CONSTRUCTION	12
DRAINAGE STRUCTURE DESIGN RECORD	13
DRAINAGE MAP	14
SUMMARY SHEETS	15-18
GENERAL PLAN AND ELEVATION (4 MILE ROAD)	18A
GENERAL PLAN AND ELEVATION (ROCKY TOP)	19
ABUTMENT & PIER DETAILS	20
FOUNDATION REPORT	20A-20B
SUMMARY OF PAY QUANTITIES (ROADWAY)	21
SUMMARY OF PAY QUANTITIES (BRIDGE)	22
PLANS AND PROFILES	23-45
STR. NO. C6A RCB DETAILS	46
STR. NO. C6 RCB DETAILS	47
STR. NO. C9 RCB DETAILS	48
STR. NO. C12 RCB DETAILS	49
STR. NO. C13 WINGWALL DETAILS	50
TRAFFIC CONTROL SHEETS	51-55
SIX MILE ROAD CROSS SECTIONS	X1-X31
COUNTY LINE ROAD CROSS SECTIONS	X31a-X50
ROCKY TOP ROAD CROSS SECTIONS	X51-X83
R/W SPECIAL PROVISIONS	SP1-SP3

THE FOLLOWING CHEROKEE NATION ROADS STANDARDS WILL BE REQUIRED TO CONSTRUCT THIS PROJECT

CNF-1-0  
CNF-2-0

THE FOLLOWING OKLAHOMA DEPARTMENT OF TRANSPORTATION STANDARDS WILL BE REQUIRED TO CONSTRUCT THIS PROJECT

ROADWAY	TRAFFIC	BRIDGE	BRIDGE
SPI-4-1	SSS-1-1	TR3-2-01E	(DISCONTINUED 1999 STDS.)
SBI-4-2	PSE-1-0	TR4-2-00E	RCB3-1-01E
PCES-4-1	DU1-1-00	RCB-C3-12(2-12)-02E	RCB2-1-00E
MFC-4-1	RSD1-1-00		RCB3-1-01E
SSCD-3-1	WSD1-1-00		RCB11-1-02E
CI-1-2	WSD2-1-00		PCB1-2-01E
SSIF-4-0	WSD3-1-00		PCB2-2-01E
CIG-3-0	SBS1-1-00		PCB5-2-01E
MI-3-0	SBS2-1-00		PCB9-2-00E
RDI-3-1	GMS1-1-00		PCB10-2-02E
DC-3-2	SSA2-1-00		APCB1-2-03E
FHTMPP-1-0	FGS1-1-00		PIER4-2-02E
FHTCP-3-0	TCS1-1-01		PIER5-2-01E
RWF1-2-2	TCS2-1-00		PIER6-2-00E
RWF2-2-1	TCS3-1-01		SEJ-CO-2-01E
ASCD-5-2	TCS4-1-01		P1-2-00E
PUD-3-2	TCS5-1-00		ROADWAY
ECM2-3-0	TCS6-1-02		(DISCONTINUED 1999 STDS)
TSC1-3-2	TCS7-1-02		RCB2-1-00E
TSC2-3-2	TCS8-1-00		RCB3-1-01E
TSB-2-0	TCS9-1-01		RCB1-02E
	TCS15-1-00		
	THRI-1-02		
	SKT-1-00		
	GHW1-1-00		
	GHW2-1-00		
	PM3-1-02		

Wesley M. Stewart

DATE: 8/17/18

WESLEY M. STEWART  
PE NO. OK 24031



HOLLOWAY, UPDIKE & BELLEN, Inc.  
818 East Side Boulevard  
Post Office Box 1543  
Muskogee, Oklahoma 74402  
(918) 682-7611  
NO. CA 219



2009 OKLAHOMA STANDARD SPECIFICATIONS FOR HIGHWAY CONSTRUCTION-ENGLISH GOVERN.  
APPROVED BY THE U.S. DEPARTMENT OF TRANSPORTATION, FEDERAL HIGHWAY ADMINISTRATION  
JANUARY 04, 2010.

PROJECT LENGTH IS BASED ON Q SURVEY

CHEROKEE NATION	CHEROKEE NATION
RECOMMENDED FOR APPROVAL:	APPROVAL:
Date: 8/20/18	Date: 8-21-18