

**CHEROKEE NATION**  
**THREE BEDROOM ADA HOUSE PLANS**

G W Y



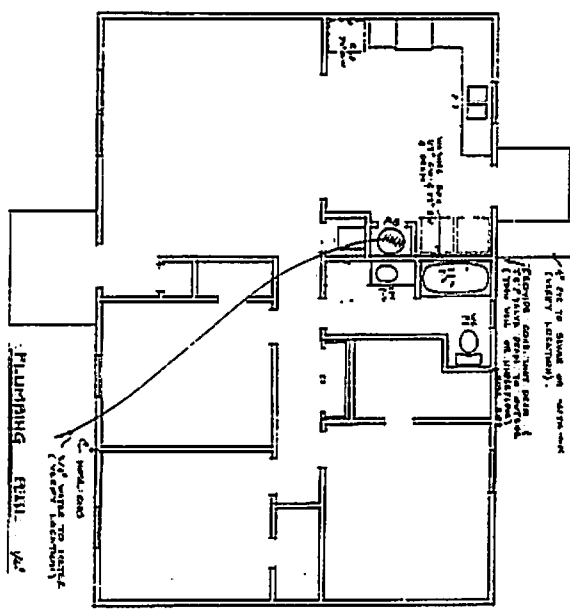
*Surveyors & Engineers*  
*Muskogee, Oklahoma*

918-682-7577

901-B CALLAHAN STREET  
MUSKOGEE, OKLAHOMA 74403

3 Bedroom Repl.

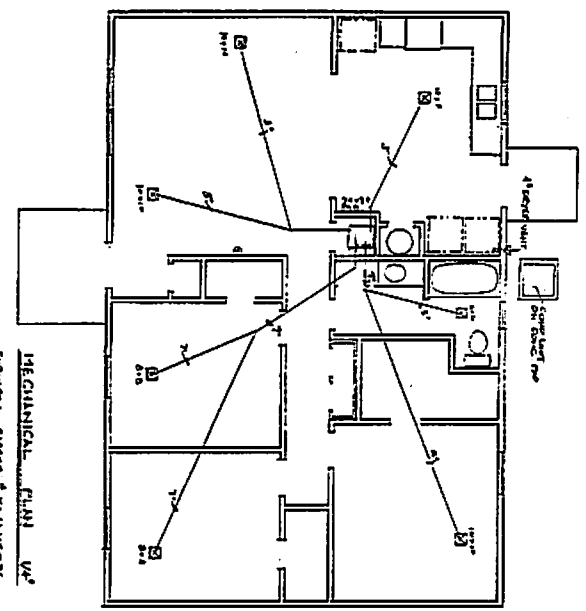




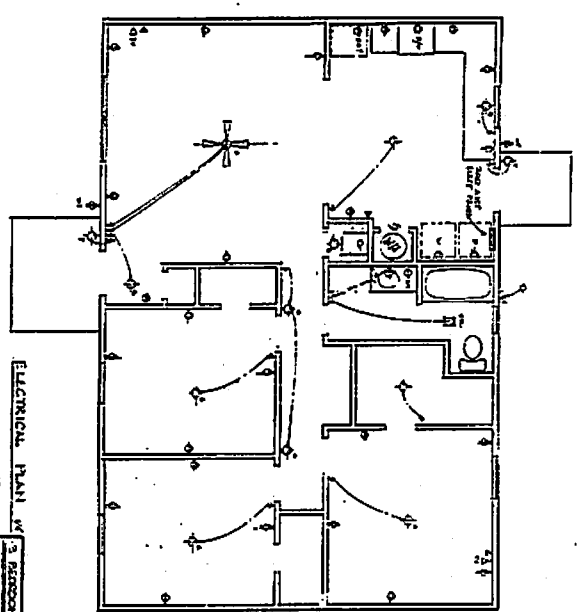
PLUMBING PART 1

**PLUMBING - PART 1 - SUPPLY & DRAIN SCHEDULE**

LINE	DESCRIPTION	CON.	SIZE	MATERIAL	REMARKS
1	Hot water supply	1/2"	1/2"	CPVC	to kitchen
2	Hot water supply	1/2"	1/2"	CPVC	to bathroom
3	Drain	1/2"	1/2"	CPVC	to kitchen
4	Drain	1/2"	1/2"	CPVC	to bathroom
5	Drain	1/2"	1/2"	CPVC	to kitchen
6	Drain	1/2"	1/2"	CPVC	to bathroom
7	Drain	1/2"	1/2"	CPVC	to kitchen
8	Drain	1/2"	1/2"	CPVC	to bathroom
9	Drain	1/2"	1/2"	CPVC	to kitchen
10	Drain	1/2"	1/2"	CPVC	to bathroom



MECHANICAL PART 1

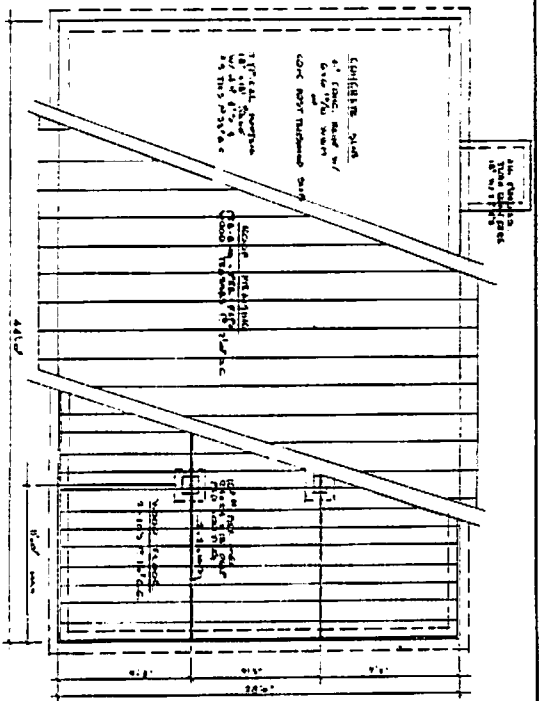


ELECTRICAL PART 1

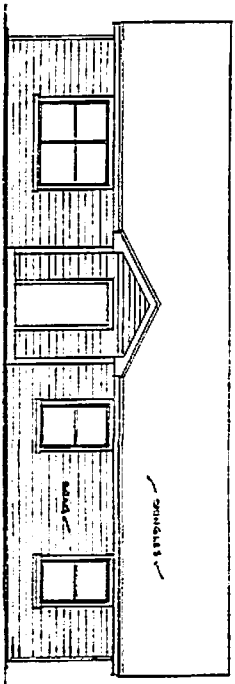
**LIGHT FIXTURES**  
 A Kitchen  
 B Living Room  
 C Bedroom  
 D Bathroom  
 E Hallway  
 F Staircase  
 G Outside  
 H Garage



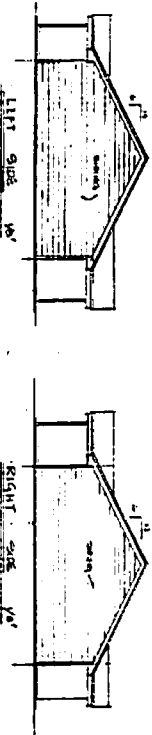
**SCOTT & ASSOCIATES, INC.**  
 11177  
 1000 CALLE DEL MAR  
 SAN DIEGO, CALIF. 92108  
 TEL: 594-1117



FOUNDATION / FRAMING PLAN 1/2" = 1'-0"

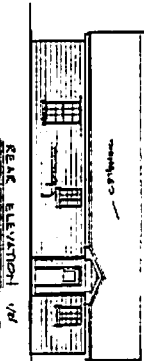


FRONT ELEVATION 9'-0" = 1'-0"

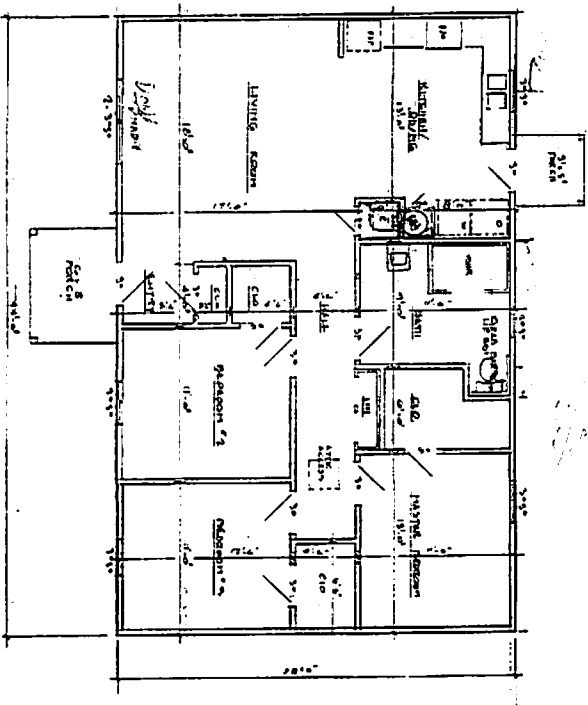


LEFT SIDE 1/2" = 1'-0"

RIGHT SIDE 1/2" = 1'-0"



REAR ELEVATION 1/2" = 1'-0"

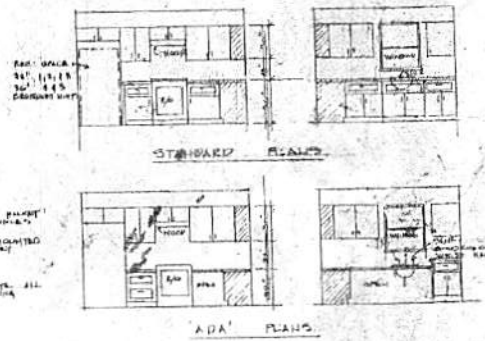
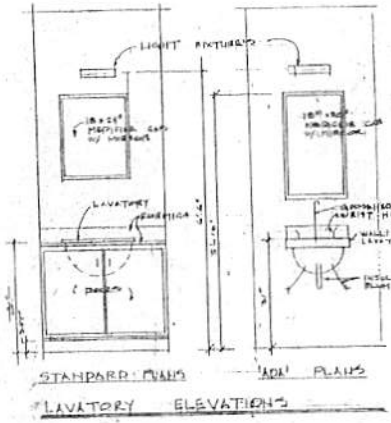
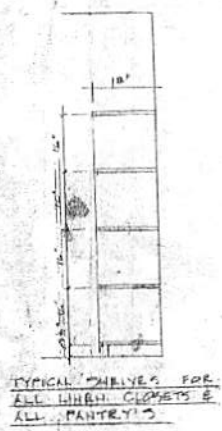
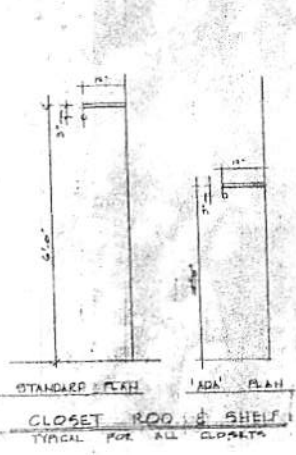
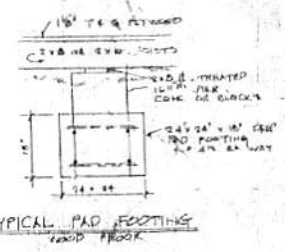
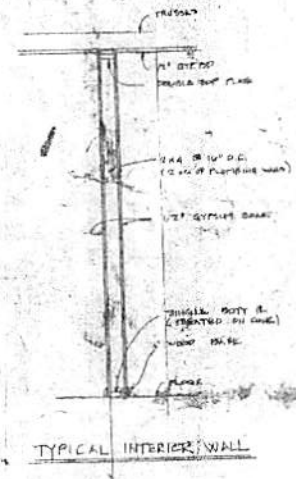
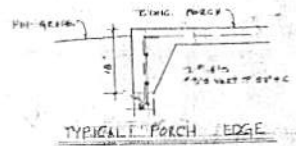
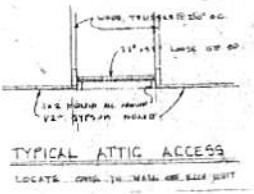
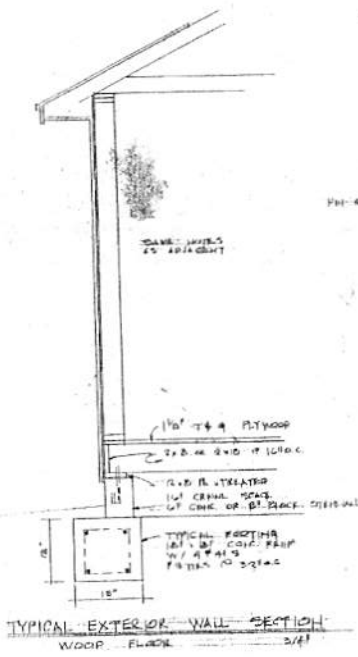
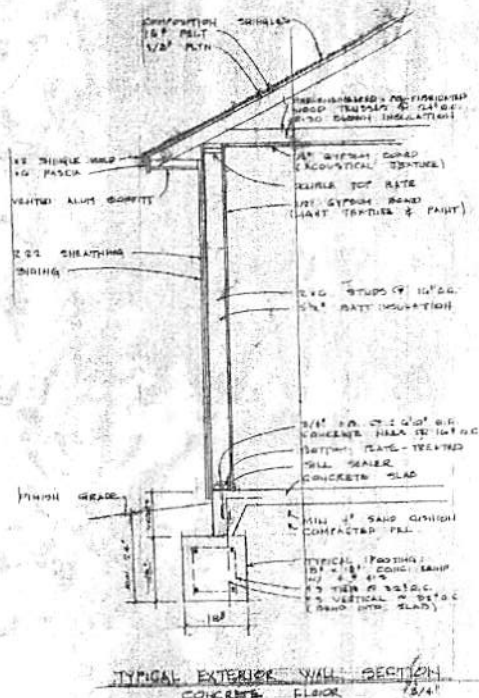


FLOOR PLAN 3/4" = 1'-0"



3 BEDROOM 1,200' PLAN  
 SCOTT & ASSOCIATES, INC.  
 1000 CALHOUN STREET  
 MEMPHIS, TN 38118-1817  
 BILL DYER - ARCHITECT





**INTERIOR ROOM FINISH SCHEDULE**

**FLOORS:**  
ALL STANDARD FLOORS TO BE GRAY  
CREAT IN LIVING ROOM, HALL & ENTRY  
TILE IN KITCHEN & PANTRY  
ALL ADA FLOORS TO BE TILE GRAY

**WALLS:**  
ALL WALLS TO BE 1/2\"/>

**CEILING:**  
ALL CEILING TO BE LIGHT  
ACoustICAL TEXTURE

**NOTE:**  
VERIFY ALL IN THE ABOVE  
WHEREAS, HATCHES &  
OPENINGS ON RECEIPT OF  
LOCATION



**MISC. DETAILS FOR THIS PROJECT**

**SCOTT & ASSOCIATES, INC.**  
2014 CALLAHAN STREET  
MURKIN, OK 73757  
BILL STILLEN-ARCHITECT

DATE: 7-14-10  
DRAWN BY: [Signature]  
CHECKED BY: [Signature]  
SCALE: AS SHOWN  
SHEET: 18 OF 18