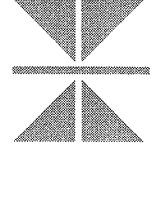


2007  
**CHEROKEE CASINO  
 EXPANSION**  
 Catfish, Oklahoma

ARCHITECT:



**Thalden • Boyd Architects**  
*A Native American Firm*

18 East 186 Street, Suite 200  
 Tulsa, Oklahoma 74119  
 Phone: (918) 524-4119  
 Fax: (918) 524-4119  
 St. Louis, MO Las Vegas, NV

**THALDEN BOYD ARCHITECTS, LLC**  
 COPYRIGHT 2007

THIS DRAWING IS THE PROPERTY OF THALDEN BOYD ARCHITECTS, LLC. IT IS TO BE USED ONLY FOR THE PROJECT AND SITE SPECIFICALLY IDENTIFIED HEREON. IT IS NOT TO BE REPRODUCED OR TRANSMITTED IN ANY FORM OR BY ANY MEANS, ELECTRONIC OR MECHANICAL, WITHOUT WRITTEN CONSENT.

CONSULTANTS:

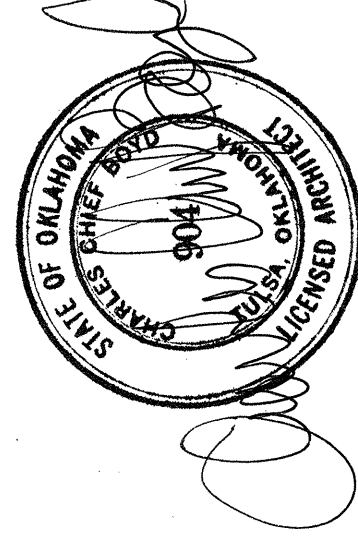
CIVIL ENGINEERS:  
**PK & ASSOCIATES**  
 1000 N. WILSON BLVD., SUITE 100  
 TULSA, OKLAHOMA 74116  
 PHONE: (918) 524-5078  
 FAX: (918) 524-5078

MECHANICAL ENGINEERS:  
**FRANSEAN BRONSON ASSOCIATES**  
 2821 W. HORIZON RIDGE PKWY., STE 400  
 TULSA, OKLAHOMA 74119  
 PHONE: (770) 292-6099  
 FAX: (770) 292-6099

STRUCTURAL ENGINEERS:  
**CHAVEZ-ORTEGA**  
 CONSULTING ENGINEERS, INC.  
 8022 SOUTH LEVING AVE  
 ALBUQUERQUE, NEW MEXICO 87109  
 PHONE: (505) 263-4000  
 FAX: (505) 263-4279

FLOORING CONSULTANT:  
**THE FLOORING GROUP**  
 1000 SOUTH LEVING AVE  
 TULSA, OKLAHOMA 74116  
 PHONE: (918) 749-8240  
 FAX: (918) 749-8240

SEAL:



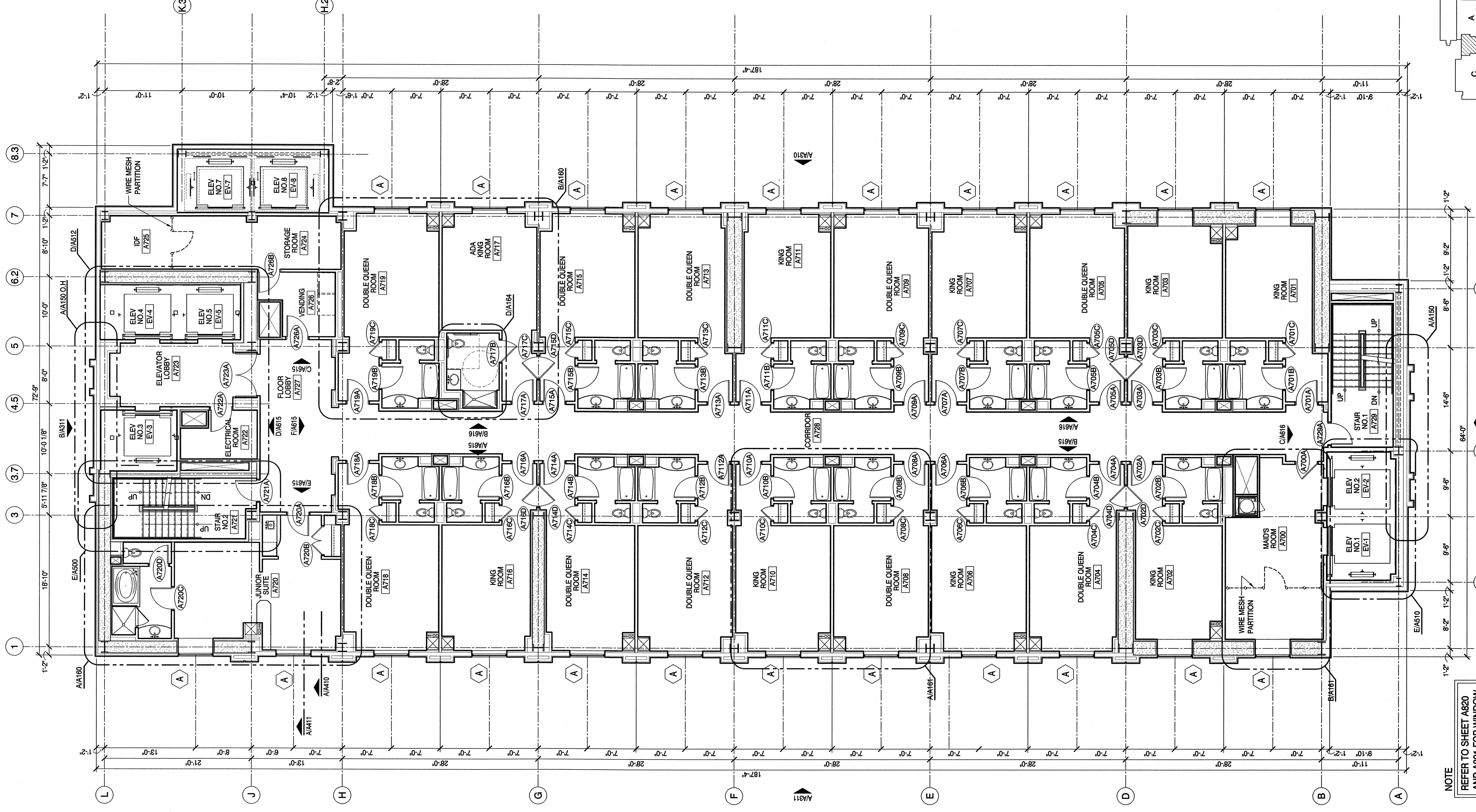
REVISIONS:	DATE	DESCRIPTION
1	01/19/2008	TOWER ENH. REV. 1
2	01/23/2008	TOWER ENH. REV. 2
3	01/31/2008	TOWER ENH. REV. 3
4	03/18/2008	CON OFFICE HOTEL INT WALL
5	04/10/2008	HOTEL INT FINISH PACKAGE
6	05/05/2008	CONSTRUCTION DOCUMENTS

NO. BY DATE

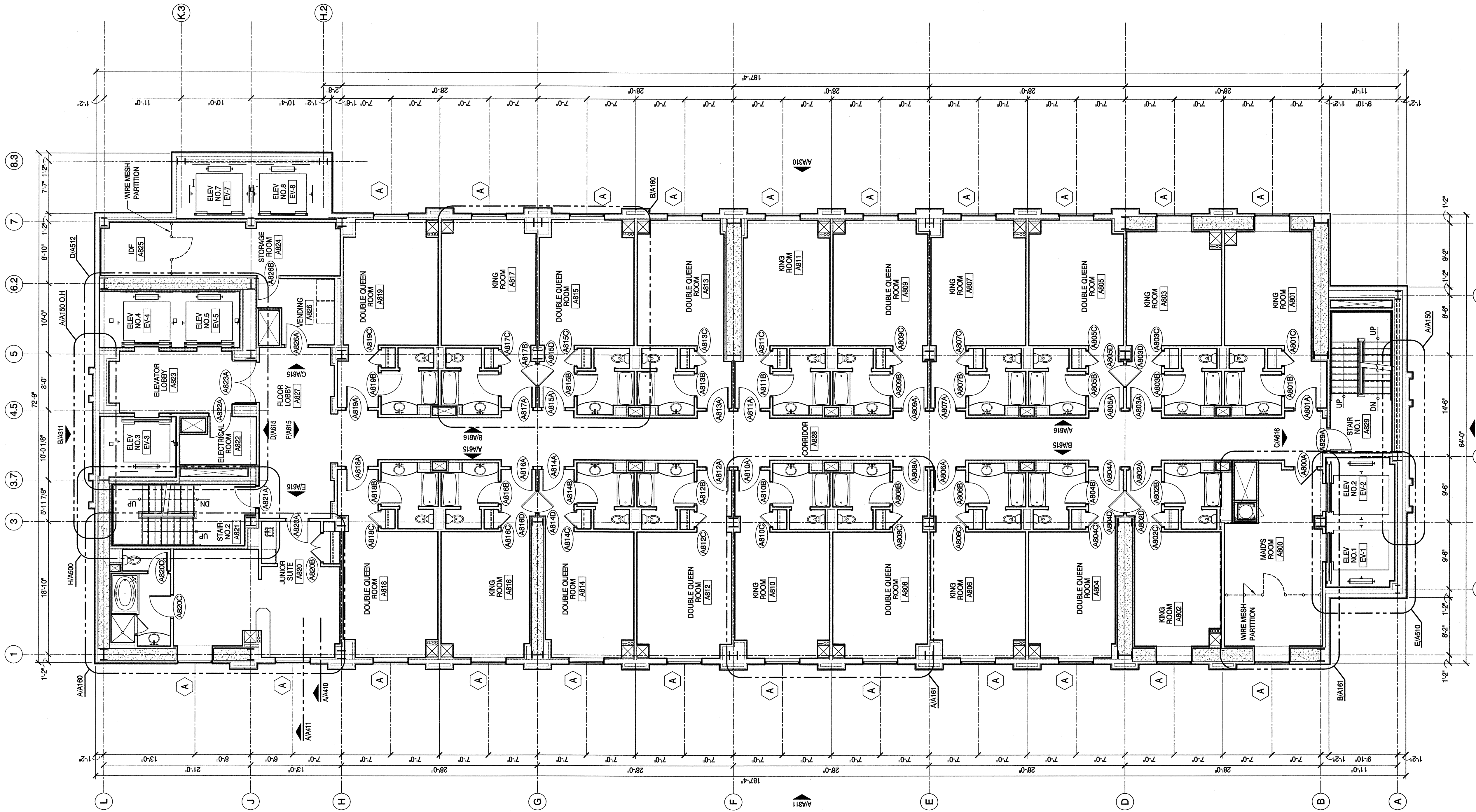
TITLE:  
**AREA "B" HOTEL TOWER -  
 SEVENTH AND EIGHTH  
 FLOOR PLAN**

PROJECT NO.: 05412  
 DATE: 02/15/2008  
 SCALE: AS SHOWN  
 CONSTRUCTION DOCUMENTS  
 DRAWING NO.

**A133**



**A** AREA "B" SEVENTH FLOOR PLAN  
 SCALE: 1/8" = 1'-0"



**B** AREA "B" EIGHTH FLOOR PLAN  
 SCALE: 1/8" = 1'-0"

