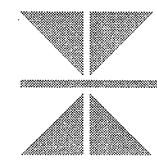


2007  
CHEROKEE CASINO  
EXPANSION  
Catoosa, Oklahoma

ARCHITECT:



**Thalden & Boyd Architects**  
A Naylor, Albritton Firm

15 East 10th Street, Suite 604  
Tulsa, Oklahoma 74119  
Tel: (918) 774-4345  
St. Louis, MO    Las Vegas, NV

**THALDEN BOYD ARCHITECTS, LLC**  
COPYRIGHT 2007

THIS DOCUMENT AND ANY INFORMATION CONTAINED HEREIN IS THE PROPERTY OF THALDEN BOYD ARCHITECTS, LLC. IT IS TO BE USED ONLY FOR THE PROJECT AND SITE SPECIFICALLY IDENTIFIED HEREIN. ANY REUSE OR MODIFICATION OF THIS DOCUMENT WITHOUT THE WRITTEN CONSENT OF THALDEN BOYD ARCHITECTS, LLC IS STRICTLY PROHIBITED.

CONSULTANTS:

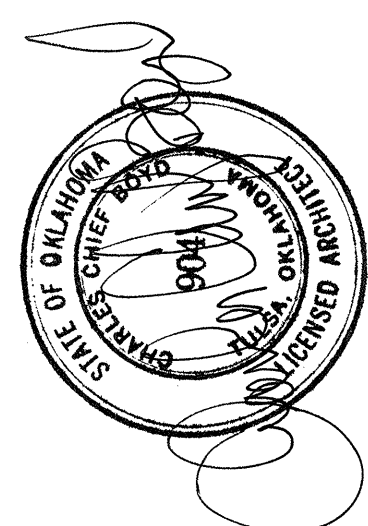
**RKL ASSOCIATES**  
4124 E. 66 PLACE  
TULSA, OKLAHOMA 74117  
PHONE: (918) 234-5078  
FAX: (918) 234-5078

**MECHANICAL, ELECTRICAL & PLUMBING ENGINEERS:**  
RICKSON ENGINEERING, INC.  
2821 W. HARRISON ROAD, PHOENIX, AZ 85029  
PHOENIX, AZ 85029  
PHONE: (602) 288-8081  
FAX: (602) 288-8081  
www.ricksoneng.com

**STRUCTURAL ENGINEERS:**  
CONSULTING ENGINEERS, INC.  
ALBUQUERQUE, NEW MEXICO 87109  
PHOENIX, ARIZONA 85004  
PHONE: (602) 344-4500  
FAX: (602) 344-4500

**FOODSERVICE CONSULTANT:**  
BLISS & ASSOCIATES  
1000 N. UNIVERSITY AVENUE  
TULSA, OKLAHOMA 74116  
PHONE: (918) 485-8800  
FAX: (918) 485-8800

SEAL:



REVISIONS:	DATE	BY	DATE
01/10/2008	TOWER ENW, REV. 1		
01/22/2008	TOWER ENW, REV. 2		
01/31/2008	TOWER ENW, REV. 3		
02/18/2008	CONV OFFICE HOTEL INT WALL		
04/10/2008	HOTEL INT FINISH PACKAGE		
05/09/2008	CONSTRUCTION DOCUMENTS		

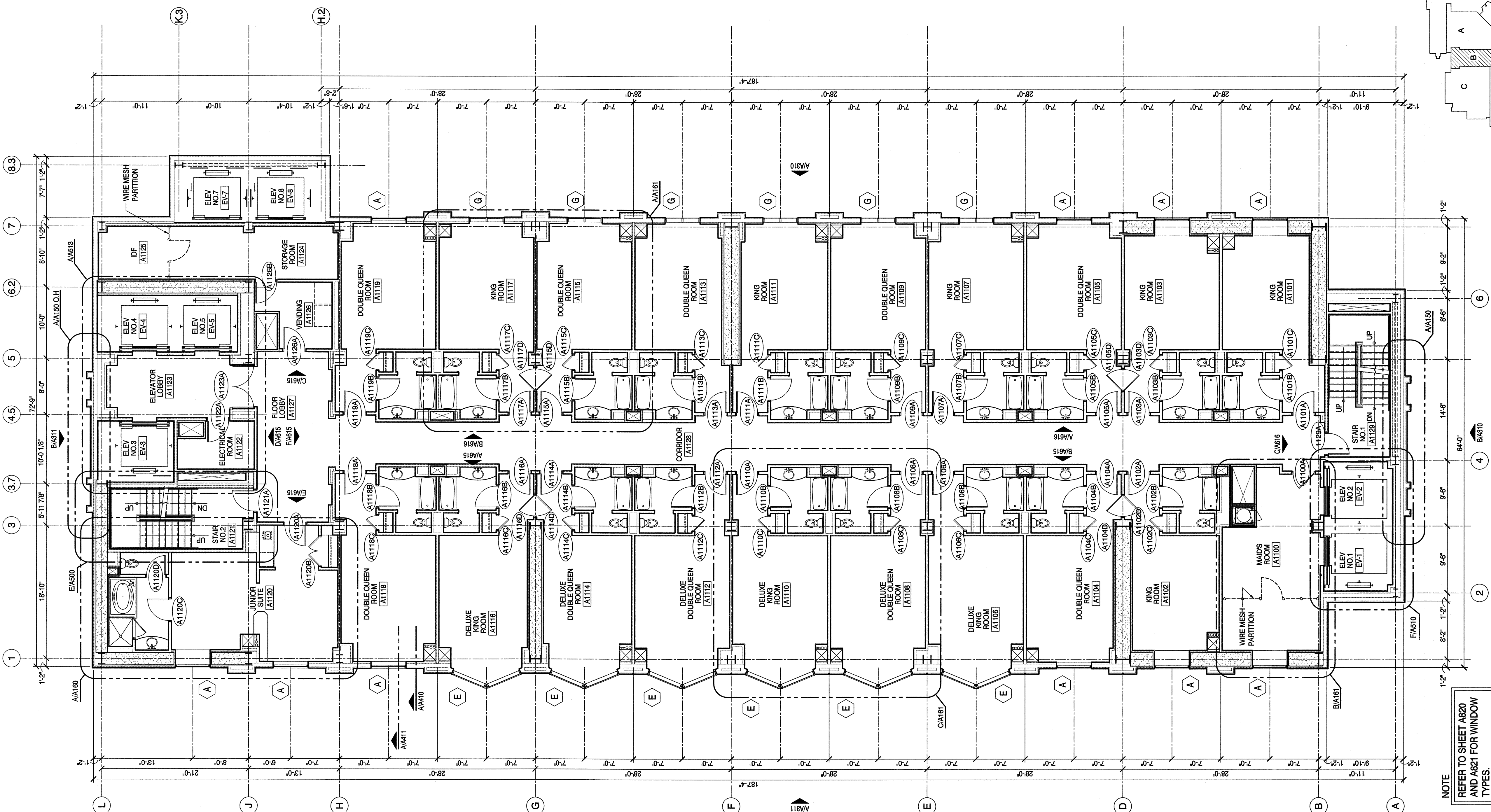
NO. BY DATE

**AREA "B" HOTEL TOWER - ELEVENTH AND TWELFTH FLOOR PLAN**

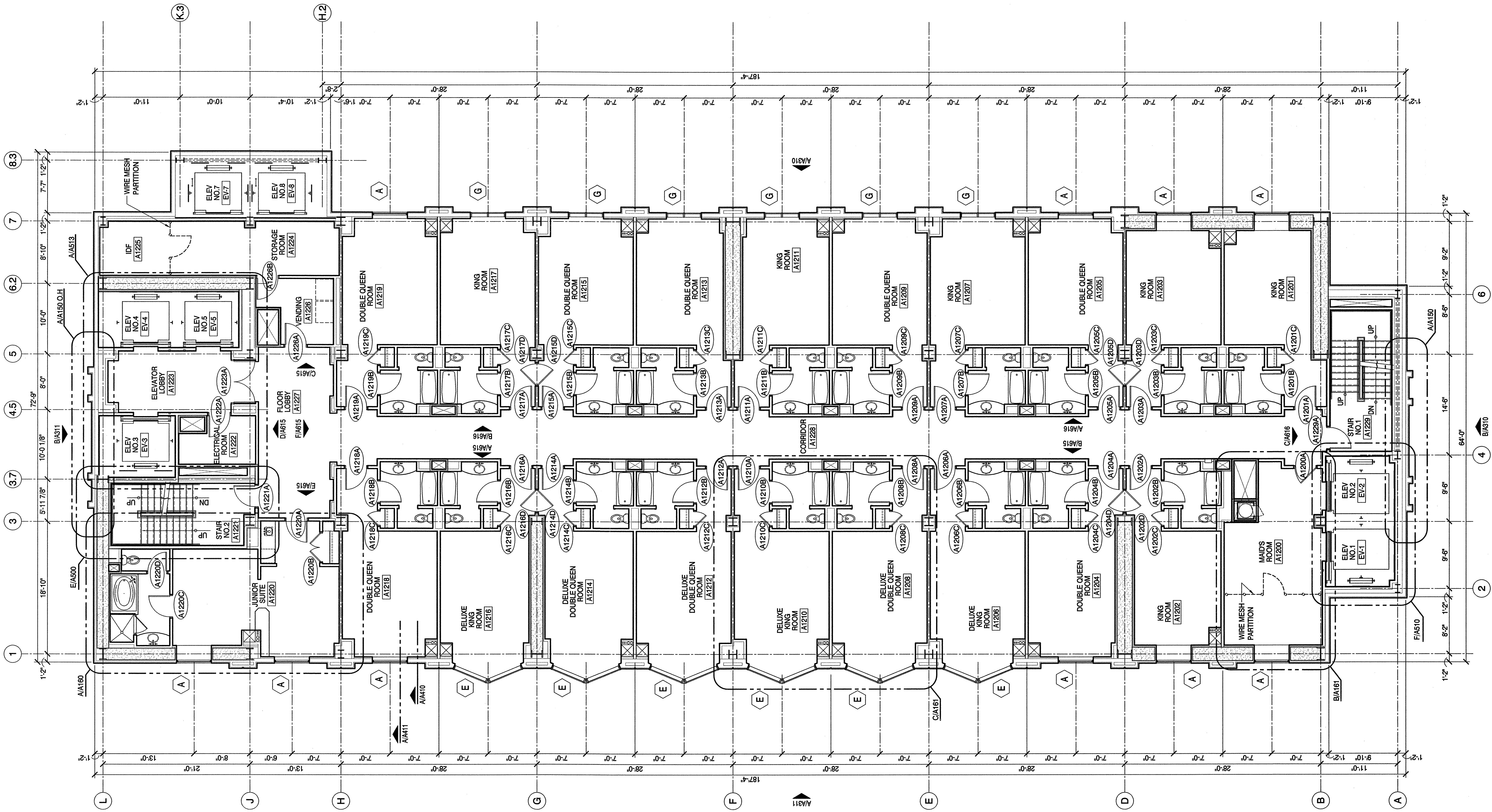
PROJECT NO.: 05412  
DATE: 02/15/2008  
SCALE: AS SHOWN

CONSTRUCTION DOCUMENTS  
DRAWING NO.

**A135**



**A** AREA "B" ELEVENTH FLOOR PLAN  
SCALE: 1/8" = 1'-0"



**B** AREA "B" TWELFTH FLOOR PLAN  
SCALE: 1/8" = 1'-0"