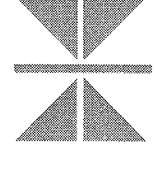


2007
**CHEROKEE CASINO
 EXPANSION**
 CAROLINA, OHIO

ARCHITECT:



Thalden Boyd Architects
A Native American Firm

18 East 10th Street, Suite 200
 Tulsa, Oklahoma 74119
 Phone: (918) 584-5070
 Fax: (918) 584-5070

S. Lodi, MD Las Vegas, NV

THALDEN BOYD ARCHITECTS, LLC

COPYRIGHT 2007

THIS DOCUMENT IS THE PROPERTY OF THALDEN BOYD ARCHITECTS, LLC. IT IS TO BE USED ONLY FOR THE PROJECT AND SITE SPECIFICALLY IDENTIFIED HEREON. IT IS NOT TO BE REPRODUCED, COPIED, OR TRANSMITTED IN ANY FORM OR BY ANY MEANS, ELECTRONIC OR MECHANICAL, WITHOUT THE WRITTEN PERMISSION OF THALDEN BOYD ARCHITECTS, LLC.

CONSULTANTS:

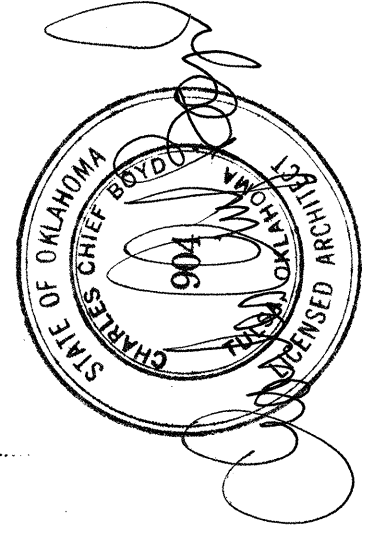
ONE ENGINEERING:
 RK & ASSOCIATES
 414 E. 6th PLACE
 TULSA, OKLAHOMA 74103
 PHONE: (918) 584-5070
 FAX: (918) 584-5070

MICHAEL ELECTRONICAL & PLUMBING ENGINEERS:
 2821 W. HORIZON TRADE PWAY, STE 200
 TULSA, OKLAHOMA 74127
 PHONE: (918) 438-8000
 FAX: (918) 438-8000
 www.michaeleng.com

CHAVEZ-GONZALEZ:
 CONSULTING ENGINEERS, INC.
 ALBUQUERQUE, NEW MEXICO 87109
 PHONE: (505) 243-4000
 FAX: (505) 243-4000

FOODSERVICE CONSULTANT:
 BRADSHAW & ASSOCIATES
 TULSA, OKLAHOMA 74103
 PHONE: (918) 438-8000
 FAX: (918) 438-8000

SEAL



REVISIONS	DATE	BY
1	01/18/2008	TOWER ENV. REV. 1
2	01/23/2008	TOWER ENV. REV. 2
3	01/31/2008	TOWER ENV. REV. 3
4	02/19/2008	CON/CP/CF/HOTEL INT/VL
5	04/10/2008	HOTEL INT FINISH PACKAGE
6	05/08/2008	CONSULTATION DOCUMENTS

NO. BY DATE

TITLE:
**AREA "B" HOTEL TOWER -
 FOURTEENTH / FIFTEENTH
 FLOOR PLAN**

PROJECT NO.: 05412

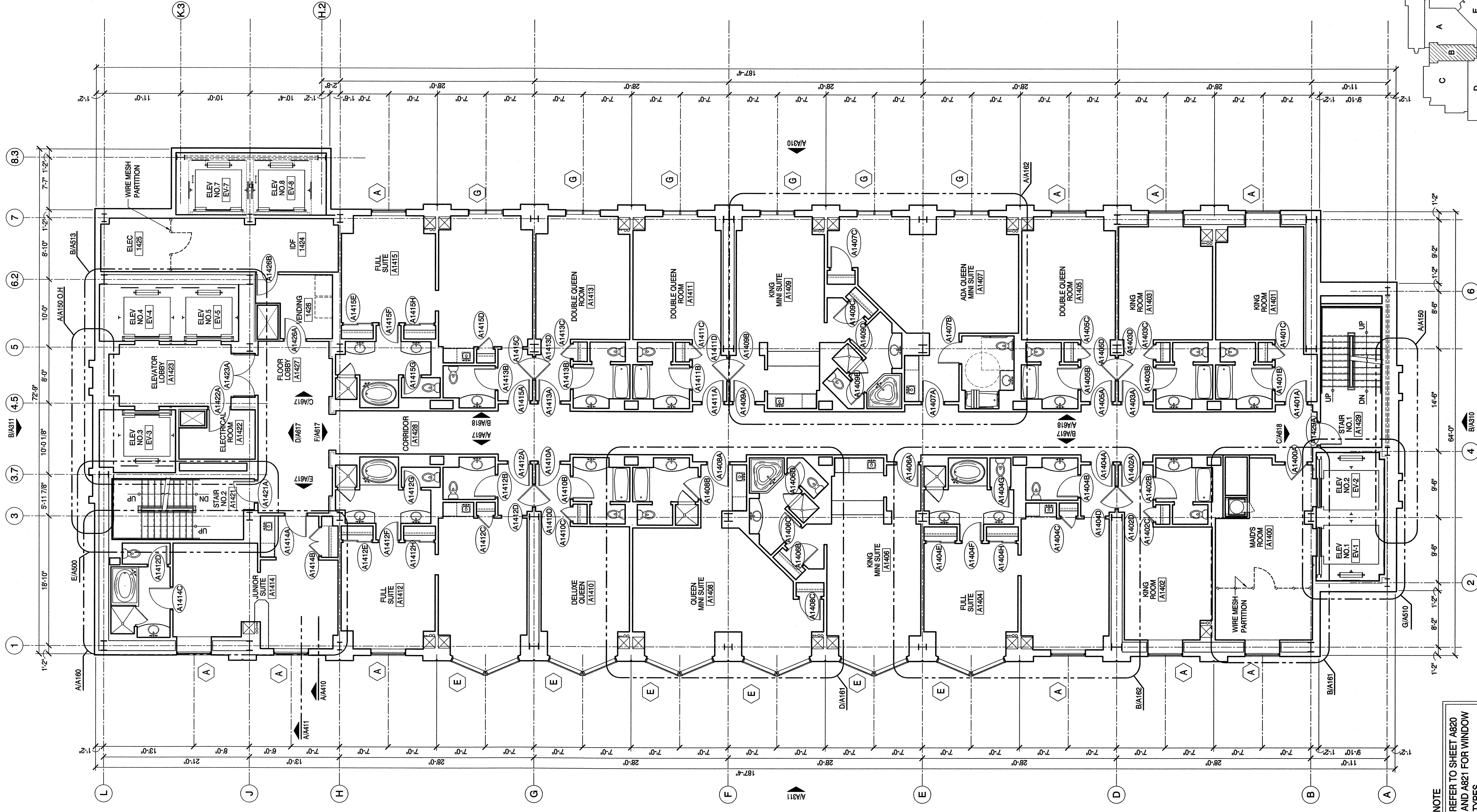
DATE: 02/15/2008

SCALE: AS SHOWN

CONSTRUCTION DOCUMENTS

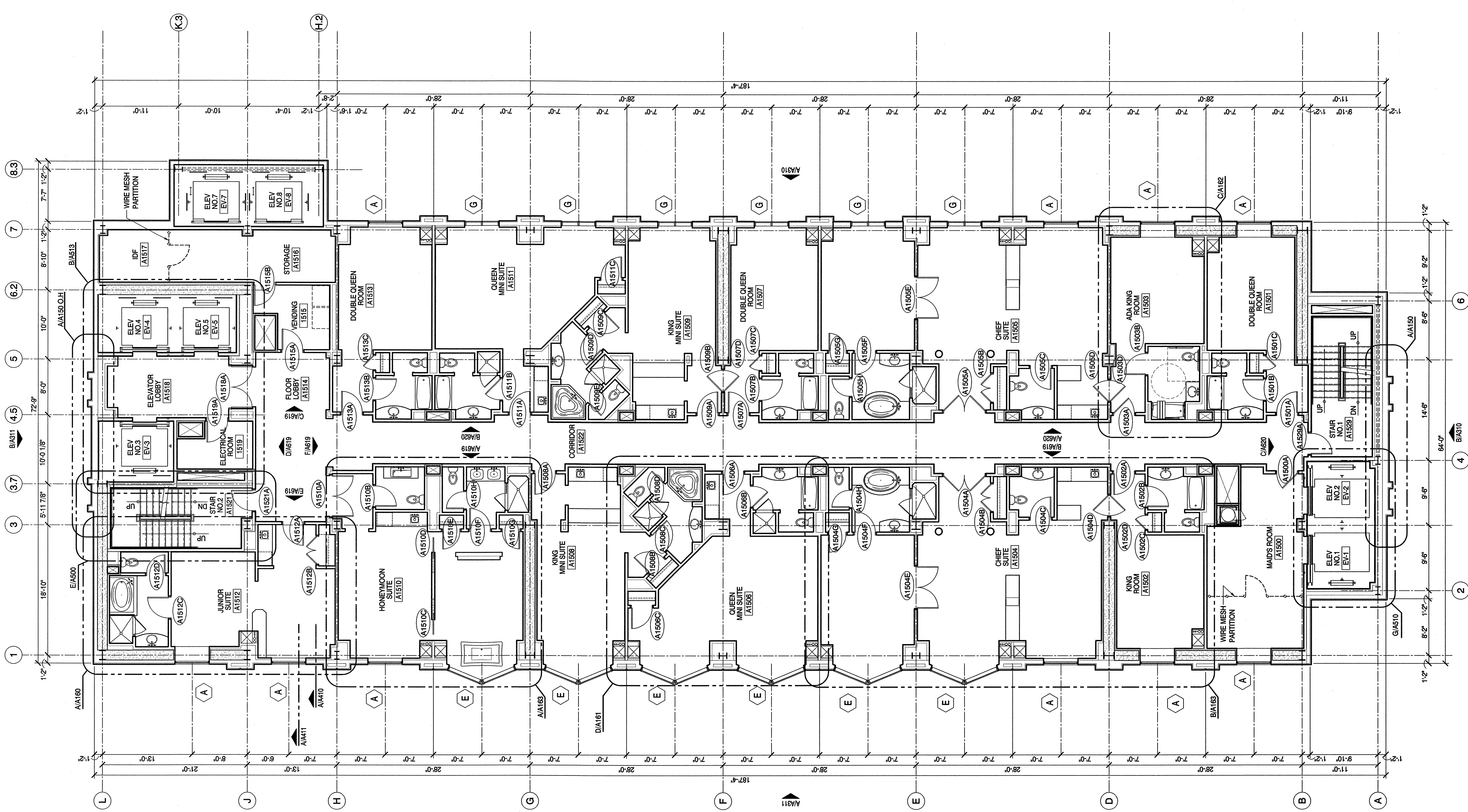
DRAWING NO.

A136



NOTE
 REFER TO SHEET A820
 AND A821 FOR WINDOW
 TYPES.

A AREA "B" FOURTEENTH FLOOR PLAN
 SCALE: 1/8" = 1'-0"
 NORTH



B AREA "B" FIFTEENTH FLOOR PLAN
 SCALE: 1/8" = 1'-0"
 NORTH