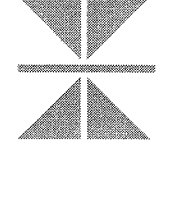


2007
**CHEROKEE CASINO
 EXPANSION**
 Catoosa, Oklahoma

ARCHITECT:



Thalden Boyd Architects
A Native American Firm

16 East 16th Street, Suite 300
 Muskogee, Oklahoma 74401
 Phone: (918) 337-7242
 St. Louis, MO Las Vegas, NV

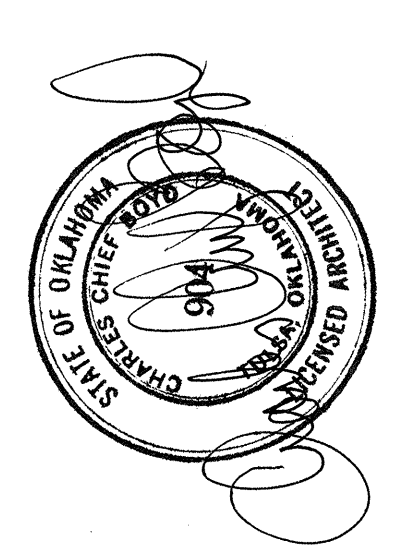
THALDEN BOYD ARCHITECTS, LLC
 COPYRIGHT 2007

THIS DRAWING AND ANY INFORMATION CONTAINED HEREIN IS THE PROPERTY OF THALDEN BOYD ARCHITECTS, LLC. IT IS TO BE USED ONLY FOR THE PROJECT AND SITE SPECIFICALLY IDENTIFIED HEREON. REPRODUCTION OR TRANSMISSION IN ANY FORM OR BY ANY MEANS WITHOUT WRITTEN CONSENT IS PROHIBITED.

CONSULTANTS:

- CIVIL ENGINEERING:
 RB & ASSOCIATES
 1000 N. W. 10th Street
 TULSA, OKLAHOMA, 74106
 PHONE: (918) 438-7777
 FAX: (918) 438-8070
- MECHANICAL/ELECTRICAL/PLUMBING ENGINEERING:
 FINNEGAN ERICSSON ASSOCIATES
 2821 W. HINDSBOURNE AVENUE, STE. 200
 OKLAHOMA CITY, OKLAHOMA 73120
 PHONE: (770) 289-0000
 FAX: (770) 289-0000
 www.finneragon.com
- STRUCTURAL ENGINEERING:
 CHAVEZ-ORTEGA
 CONSULTING ENGINEERS, INC.
 8555 LEFFERTSON AVE. NE
 ALBUQUERQUE, NEW MEXICO 87119
 PHONE: (505) 263-8800
 FAX: (505) 263-8779
- REGISTERED CONSULTANT:
 ROBERTSON CONSULTANTS
 6202 SOUTH LEVINA AVE
 TULSA, OKLAHOMA 74133
 PHONE: (918) 746-1052
 FAX: (918) 746-8004

SEAL:



REVISIONS:	DATE	BY	DATE
1	01/18/2008	TOWER ENV. REV. 1	
2	01/22/2008	TOWER ENV. REV. 2	
3	01/31/2008	TOWER ENV. REV. 3	
4	03/18/2008	CCM/OFFICE/HOTEL INT/WALL	
5	04/10/2008	HOTEL INT/FINISH/POCKETS	
6	05/08/2008	CONSTRUCTION DOCUMENTS	

NO. BY DATE

TITLE:
**AREA "B" HOTEL TOWER -
 SIXTEENTH / SEVENTEENTH
 FLOOR PLAN**

PROJECT NO.: 05412

DATE: 02/15/2008

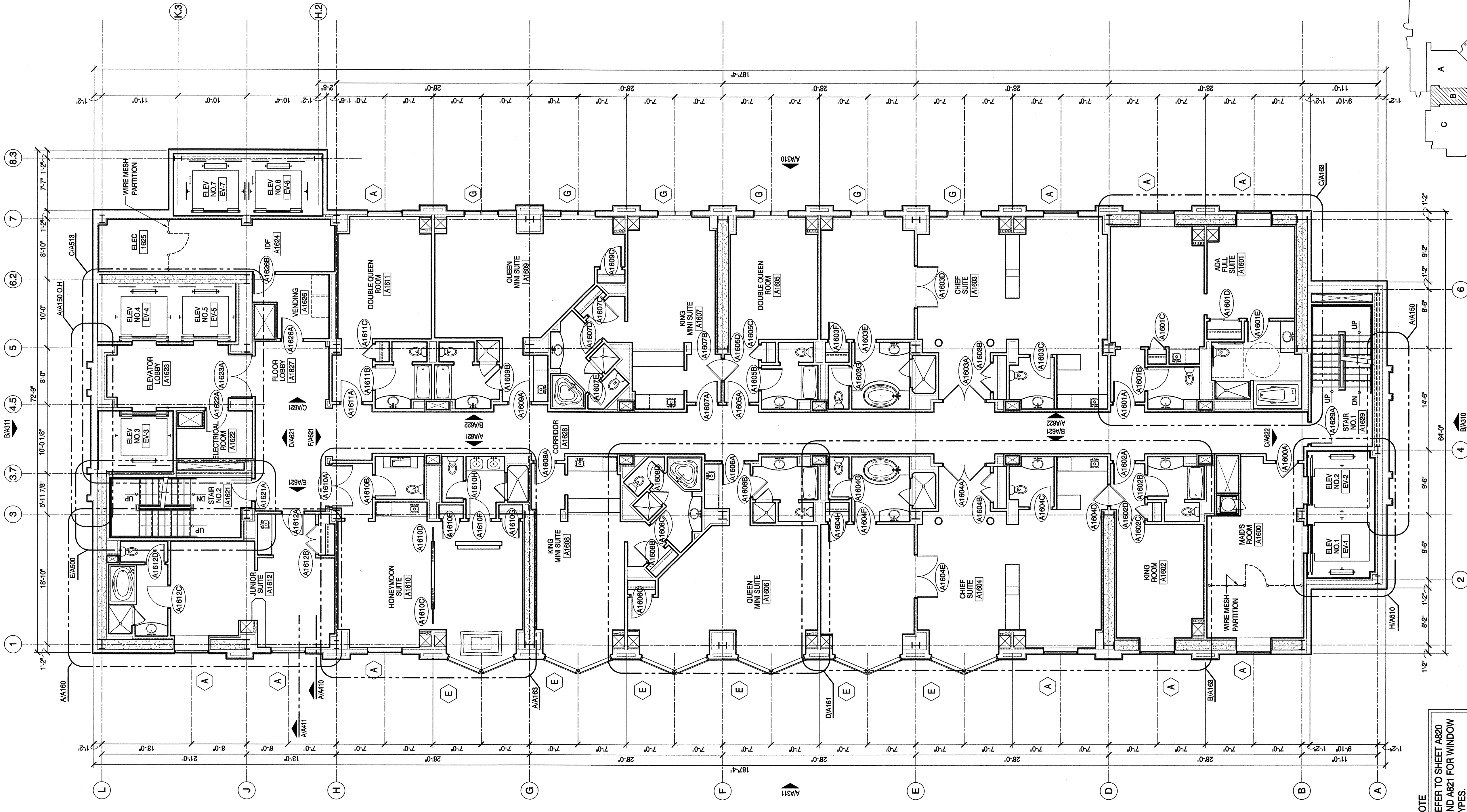
SCALE: AS SHOWN

CONSTRUCTION

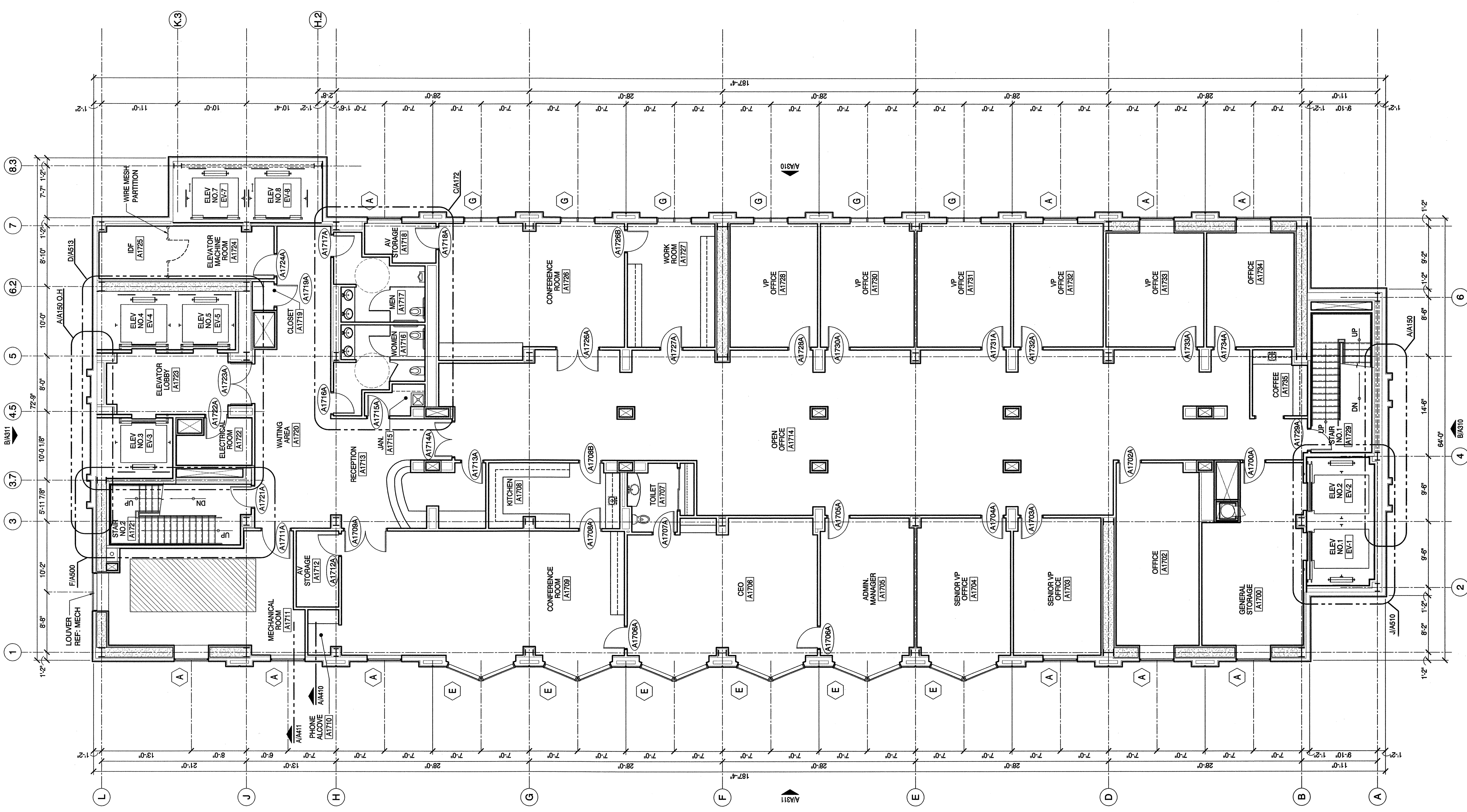
DOCUMENTS

DRAWING NO.

A137



A AREA "B" SIXTEENTH FLOOR PLAN
 SCALE: 1/8" = 1'-0"
 NORTH



B AREA "B" SEVENTEENTH FLOOR PLAN
 SCALE: 1/8" = 1'-0"
 NORTH