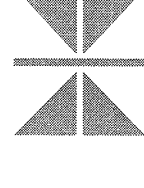


2007
CHEROKEE CASINO
EXPANSION
Catoosa, Oklahoma

ARCHITECT:



Thalden • Boyd Architects
A Native American Firm

18 East 19th Street, Suite 500
Tulsa, Oklahoma 74119
Phone: (918) 524-5578
Fax: (918) 524-5576
St. Louis, MO Las Vegas, NV

THALDEN BOYD ARCHITECTS, LLC
COPYRIGHT 2007

THIS DRAWING AND ALL INFORMATION CONTAINED HEREIN ARE THE PROPERTY OF THALDEN BOYD ARCHITECTS, LLC. NO PART OF THIS DRAWING MAY BE REPRODUCED WITHOUT WRITTEN CONSENT.

CONSULTANTS:

CIVIL ENGINEERING:
RM & ASSOCIATES
1200 SOUTH LEWIS AVE.
TULSA, OKLAHOMA 74119
PHONE: (918) 524-5578
FAX: (918) 524-5576

MECHANICAL ENGINEERING:
PINKSTON ERICKSON ASSOCIATES
2821 W. HORTON ROAD PKWY., SUITE 200
TULSA, OKLAHOMA 74119
PHONE: (918) 524-5578
FAX: (918) 524-5576

STRUCTURAL ENGINEERING:
CHAVEZ GREENE
CONSULTING ENGINEERS, INC.
1000 SOUTH LEWIS AVE.
ALBUQUERQUE, NEW MEXICO 87109
PHONE: (505) 242-8800
FAX: (505) 242-8799

FOUNDER/VICE PRESIDENT:
THALDEN BOYD ARCHITECTS, LLC
18 EAST 19TH STREET, SUITE 500
TULSA, OKLAHOMA 74119
PHONE: (918) 524-5578
FAX: (918) 524-5576

SEAL:



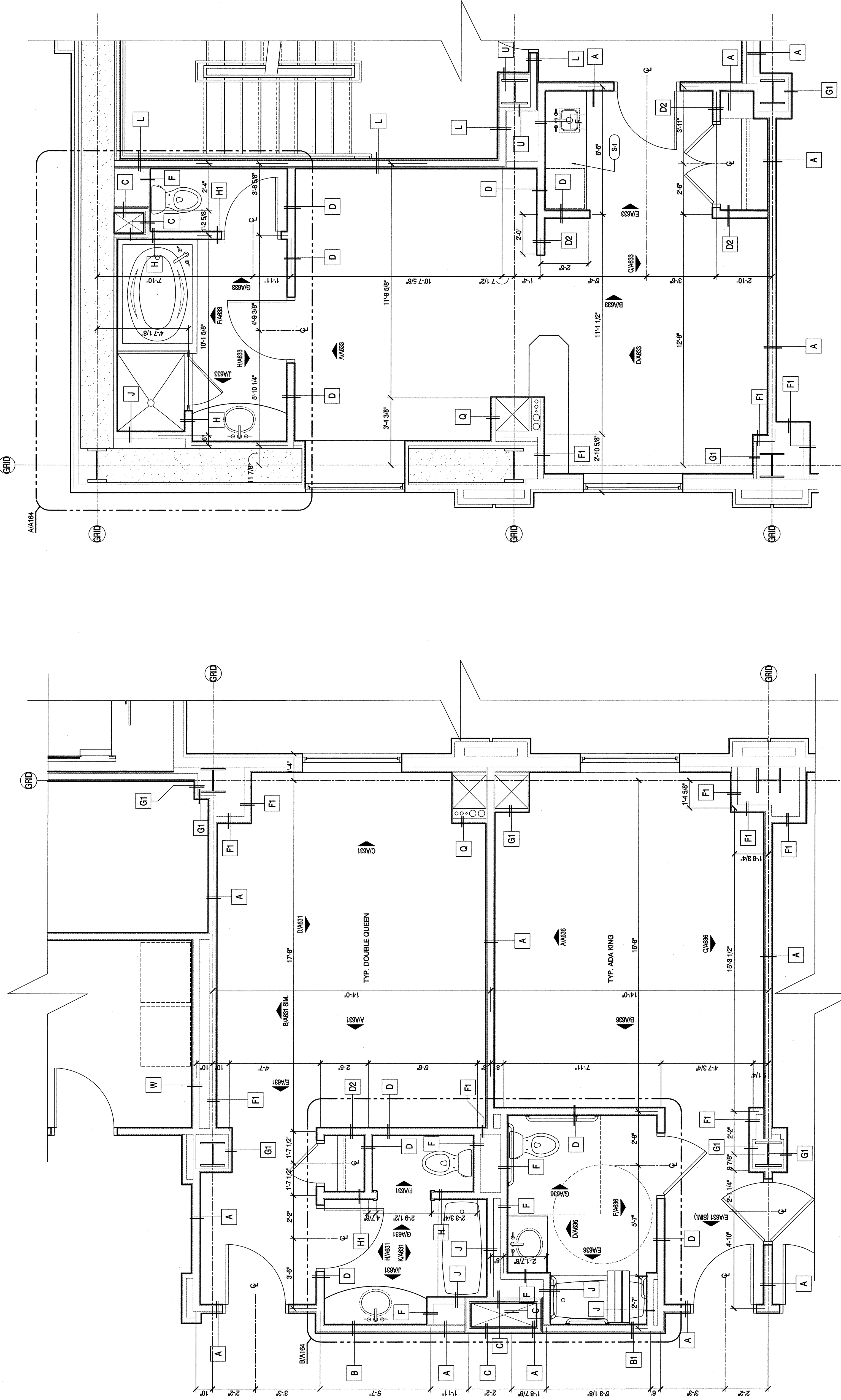
REVISIONS:

03/15/2008 CONCEPTUAL

04/10/2008 HOTEL FINISH PACKAGE

05/09/2008 CONSTRUCTION DOCUMENTS

NO. BY DATE



B DOUBLE QUEEN AND ADA KING ENLARGED PLANS
SCALE: 3/8" = 1'-0"

A TYPICAL JUNIOR SUITE ENLARGED PLAN
SCALE: 3/8" = 1'-0"

A160

CONSTRUCTION DOCUMENTS
DRAWING NO.

TITLE:
ENLARGED FLOOR PLANS - UNIT TYPES

PROJECT NO.: 05412
DATE: 02/15/2008
SCALE: AS SHOWN

NO. BY DATE