

AIA[®] Document G710[™] – 2017

Architect's Supplemental Instructions

PROJECT: *(name and address)*
17-13 OSU College of Med. at Hastings
Tahlequah, OK

CONTRACT INFORMATION:
Contract For: General Construction
Date: 04-22-2019

ASI INFORMATION:
ASI Number: Bid Package 04 - ASI 01
Date: 05-24-2019

OWNER: *(name and address)*
Cherokee Nation Business
777 West Cherokee St.
Catoosa, OK 74015

ARCHITECT: *(name and address)*
Childers Architect
45 South 4th Street
Fort Smith, AR 72901

CONTRACTOR: *(name and address)*
Cooper / Flintco

The Contractor shall carry out the Work in accordance with the following supplemental instructions without change in Contract Sum or Contract Time. Proceeding with the Work in accordance with these instructions indicates your acknowledgment that there will be no change in the Contract Sum or Contract Time.
(Insert a detailed description of the Architect's supplemental instructions and, if applicable, attach or reference specific exhibits.)

See attached revised sheets for underground drainage / plumbing revisions.

C6-505 STORM SEWER DETAILS

P0.02 UNDERGROUND FOOTING COORDINATION

P0.03 UNDERGROUND BASEMENT PLUMBING PLAN

P0.04 UNDERGROUND PLUMBING VENT/DRAIN ISOMETRIC BASEMENT

P0.06 UNDERGROUND LEVEL 01 PLUMBING PLAN

ISSUED BY THE ARCHITECT:

Childers Architect

ARCHITECT *(Firm name)*



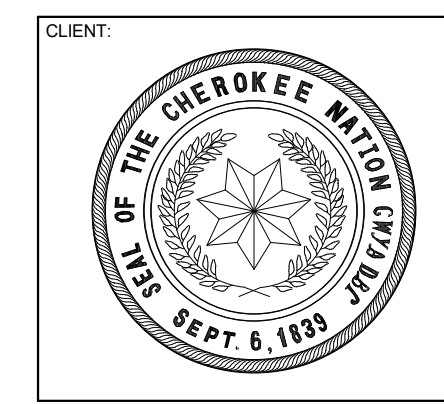
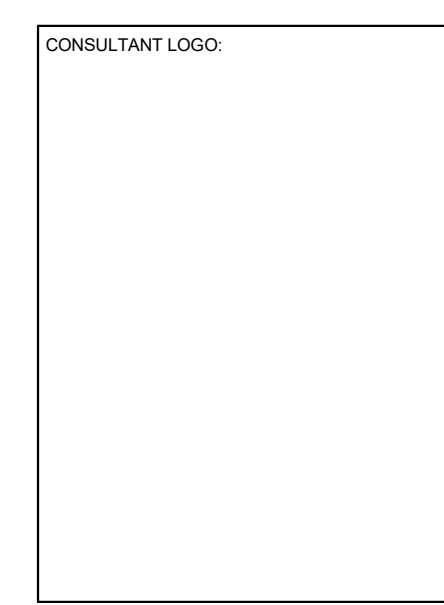
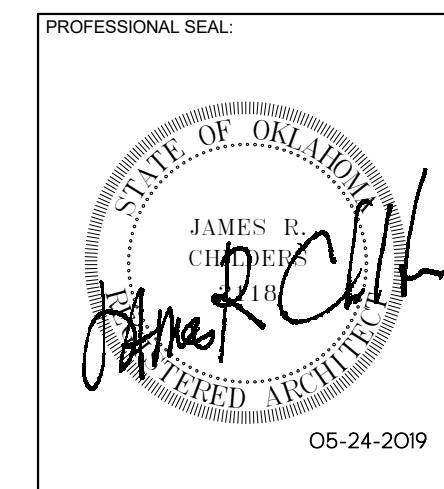
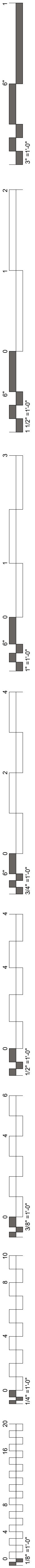
SIGNATURE

Blake Mahar, Project Manager

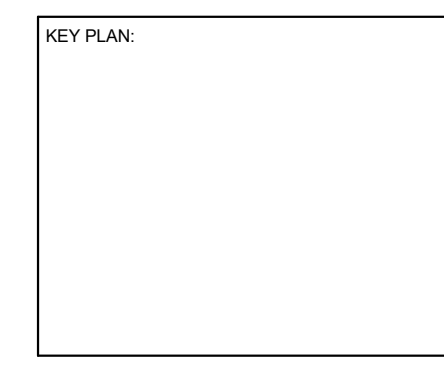
PRINTED NAME AND TITLE

05-24-2019

DATE



COLLEGE OF
Osteopathic Medicine
AT THE CHEROKEE NATION
TAHLEQUAH, OKLAHOMA



PROJECT PHASE:
BID PACKAGE 04

#	DATE	REVISIONS	DESCRIPTION
1	05/24/19	BID PACKAGE 04 A&I 01	

DATE: 05-10-19 JOB NUMBER: 17-13

SHEET NUMBER:
G0.04

COVER / INDEX



COLLEGE OF
Osteopathic Medicine
AT THE CHEROKEE NATION

BID PACKAGE 04
(UNDERGROUND UTILITIES / STEEL)

Sheet Number	SHEET NAME	DATE
GENERAL	COVER / INDEX	
CIVIL		
C4-101	UTILITY PLAN	
C8-201	STORM SEWER PLAN AND PROFILE	
C8-202	STORM SEWER PLAN AND PROFILE	
C8-203	STORM SEWER PLAN AND PROFILE	
C8-204	FOOTER DRAIN PLAN AND PROFILE	
C8-501	STORM SEWER DETAILS	
C8-502	STORM SEWER DETAILS	
C8-503	STORM SEWER DETAILS	
C8-504	STORM SEWER DETAILS	
C8-505	STORM SEWER DETAILS	
C8-801	EXISTING HYDROLOGY	
C8-802	PROPOSED HYDROLOGY	
C8-201	SEWER PLAN AND PROFILE	
C8-501	LIFT STATION DETAILS	
STRUCTURAL		
S1-20	SECOND FLOOR FRAMING PLAN - OVERALL PLAN	
S1-21	SECOND FLOOR FRAMING PLAN - SECTOR 1	
S1-22	SECOND FLOOR FRAMING PLAN - SECTOR 2	
S1-30	THIRD FLOOR FRAMING PLAN - OVERALL PLAN	
S1-31	THIRD FLOOR FRAMING PLAN - SECTOR 1	
S1-32	THIRD FLOOR FRAMING PLAN - SECTOR 2	
S1-40	ROOF FRAMING PLAN - OVERALL PLAN	
S1-41	ROOF FRAMING PLAN - SECTOR 1	
S1-42	ROOF FRAMING PLAN - SECTOR 2	
S1-50	HIGH ROOF FRAMING PLAN - OVERALL PLAN	
S1-51	HIGH ROOF FRAMING PLAN - SECTOR 1	
S1-52	HIGH ROOF FRAMING PLAN - SECTOR 2	
S3-21	FRAMING SECTIONS	
S3-22	FRAMING SECTIONS	
S3-23	FRAMING SECTIONS	
S5-51	STEEL DETAILS	
S5-52	STEEL DETAILS	
S5-53	STEEL DETAILS	
S5-54	STEEL DETAILS	
S5-62	TYPICAL VERTICAL CIRCULATION FRAMING DETAILS	
S7-31	TYPICAL COLD-FORMED DETAILS	
S7-41	TYPICAL STEEL DETAILS	
S8-01	SIDEPLATE GENERAL NOTES AND CONSTRUCTION GUIDELINES	
S8-02	SIDEPLATE COLUMN DETAILS, A TYPE NO PLATE D	
S8-03	SIDEPLATE COLUMN DETAILS, B TYPE NO PLATE D	
S8-04	SIDEPLATE COLUMN DETAILS, A TYPE	
S8-05	SIDEPLATE BEAM DETAILS	
S8-06	SIDEPLATE BEAM DETAILS, NARROW	
S8-07	SIDEPLATE FIELD ERECTION DETAILS	
S8-08	SIDEPLATE MISC DETAILS AND COORDINATION ITEMS	
PLUMBING		
P0-00	PLUMBING DETAILS, LEGNEDS, NOTES AND SCHEDULES	
P0-01	UNDERGROUND PLUMBING NOTES	
P0-02	UNDERGROUND FOOTING COORDINATION	
P0-03	UNDERGROUND BASEMENT PLUMBING PLAN	
P0-04	UNDERGROUND PLUMBING VENT/RAIN ISOMETRIC BASEMENT	
P0-05	UNDERGROUND LEVEL 01 - OVERALL PLAN	
P0-06	UNDERGROUND LEVEL 01 PLUMBING PLAN	
P0-07	UNDERGROUND PLUMBING VENT/RAIN ISOMETRIC LEVEL 01	
MECHANICAL		
M0-00	UNDERGROUND MECHANICAL PLAN	
M0-01	UNDERGROUND MECHANICAL NOTES	
ELECTRICAL		
E0-00	ELECTRICAL NOTES AND LEGEND	
E0-01	UNDERGROUND ELECTRICAL PLAN	
E0-02	UNDERGROUND ELECTRICAL FEEDER PLAN	
E0-03	UNDERGROUND BRANCH CIRCUIT PLAN BASEMENT LEVEL SECTOR 02	
E0-04	ELECTRICAL UNDERGROUND BRANCH CIRCUIT LEVEL 01 SECTOR 01	
FIRE PROTECTION		
FP2-01	FIRE PROTECTION - UNDERGROUND PLAN	
Grand total:	61	

CARDINAL ENGINEERING
525 CENTRAL PARK DRIVE, SUITE 402
OKLAHOMA CITY, OK 73105
(405) 842-1096

CIVIL ENGINEERING

Chavez-Grievos
consulting engineers, Inc.
4700 LINCOLN ROAD NE, SUITE 102
ALBUQUERQUE, NM 87109
(505) 344-4080

STRUCTURAL ENGINEER

HP ENGINEERING
1836 SOUTH BALTIMORE AVE.
TULSA, OK 74119
(539) 664-4618

MECHANICAL & ELECTRICAL ENGINEER

Interior Logistics
1316 E 35TH PLACE, SUITE 100
TULSA, OK 74105
(918) 382-9120

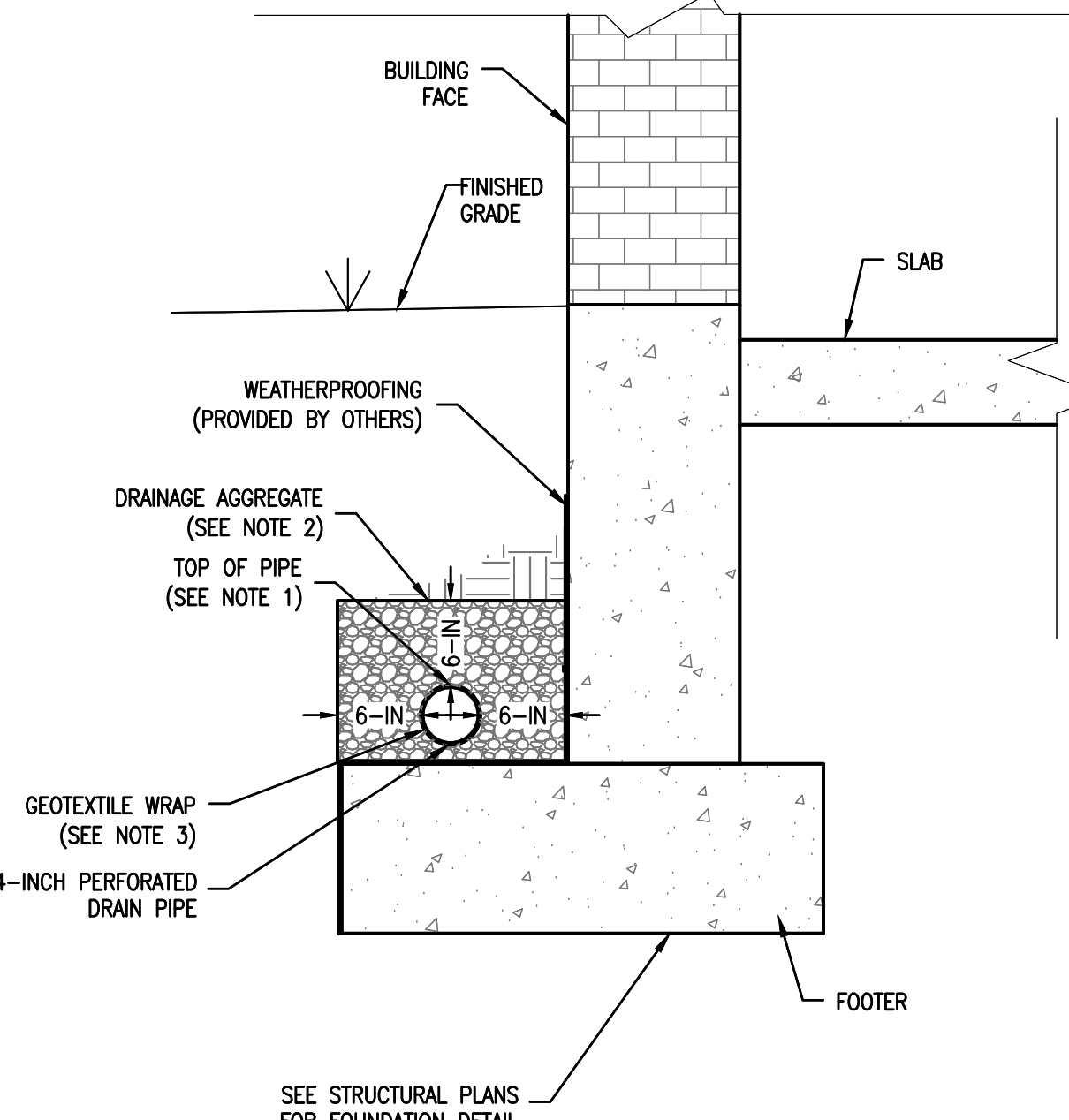
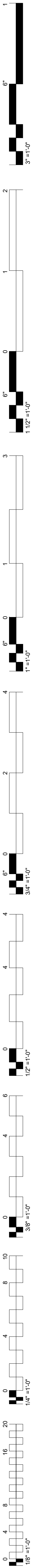
EQUIPMENT PLANNER

HKS
1000 MACON ST, SUITE 150
FORT WORTH, TX 77002
(817) 348-0330

ARCHITECTURAL HEALTHCARE PLANNING

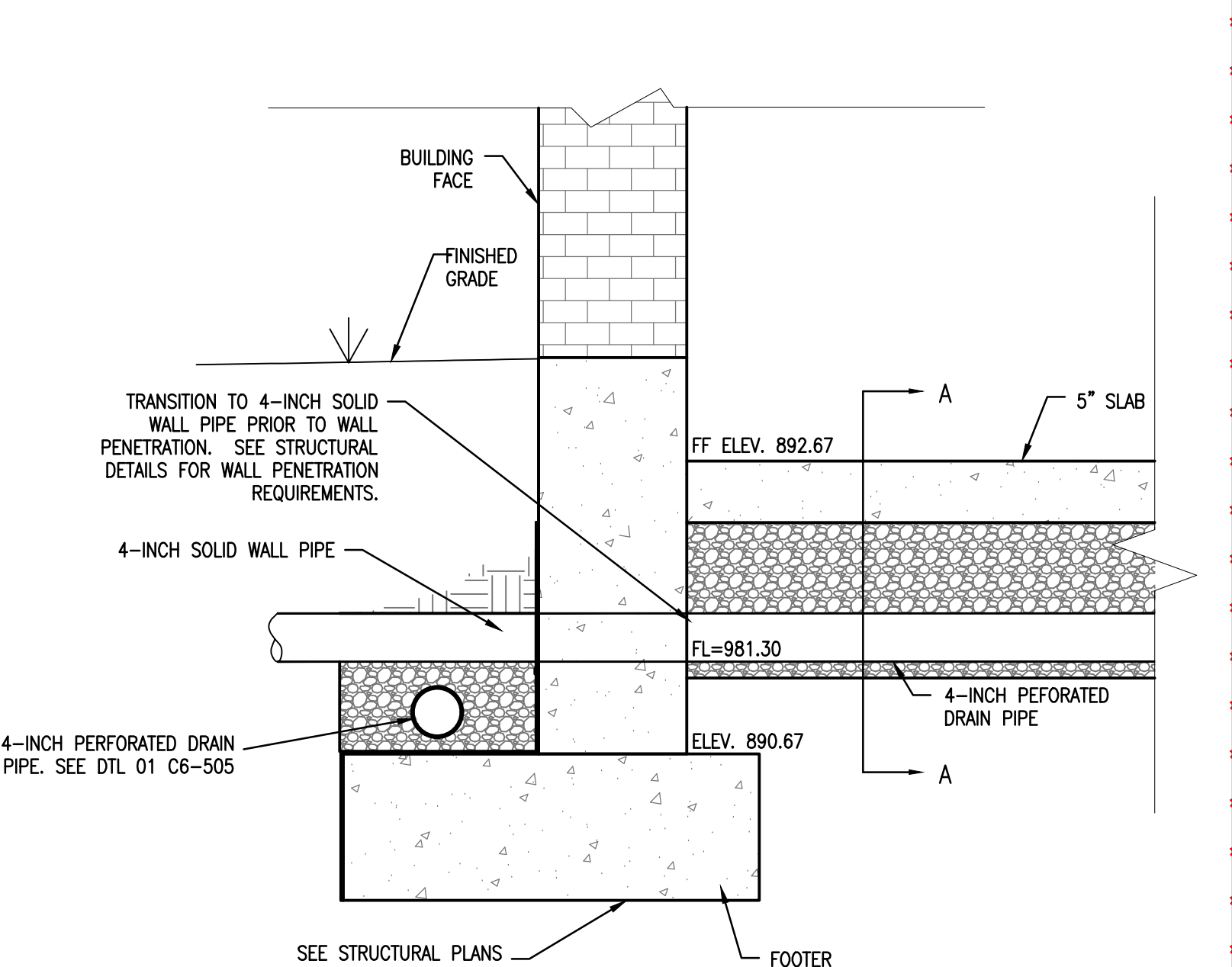
WSP
808 TRAVIS STREET, SUITE 200
HOUSTON, TX 77002
(281) 589-5900

FIRE PROTECTION / LIFE SAFETY



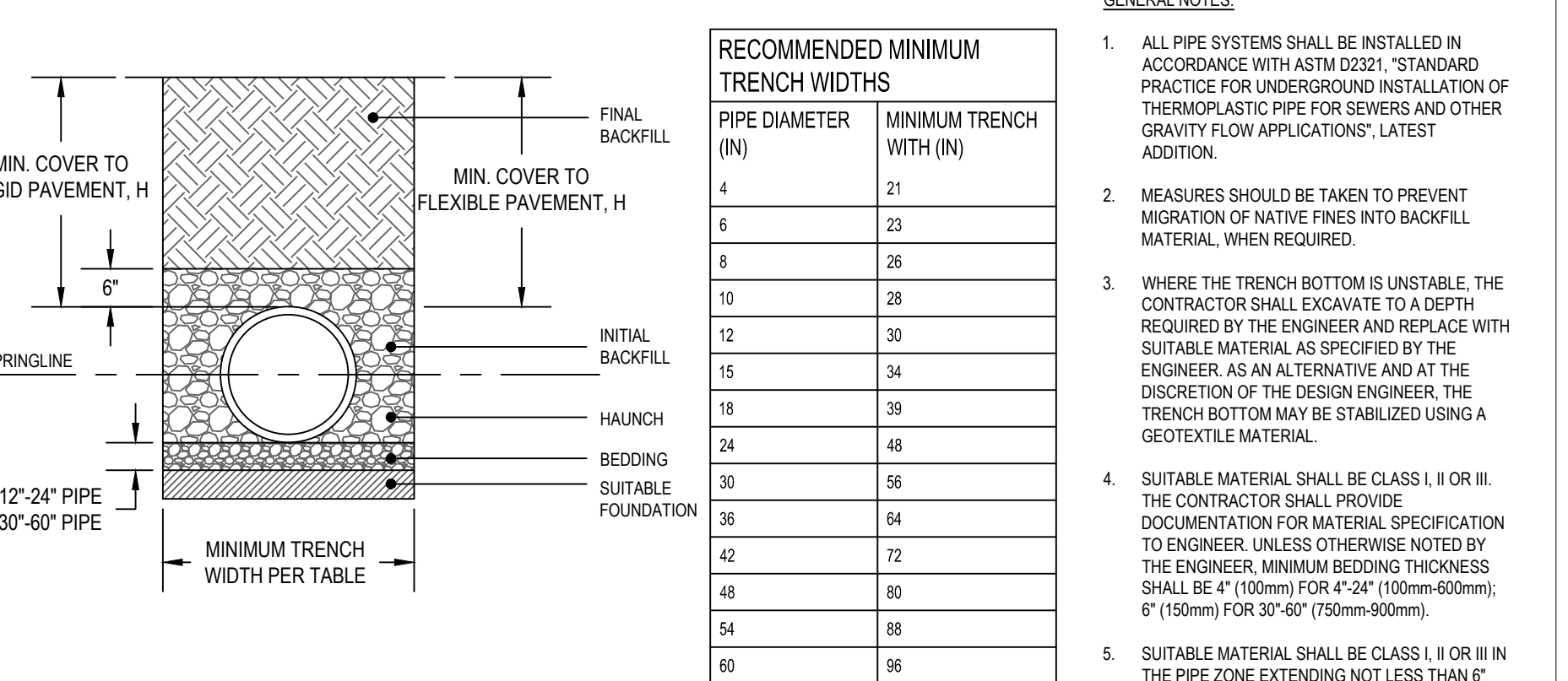
- NOTES:
- 1 - TOP OF PERFORATED PIPE MUST BE BELOW BOTTOM OF SLAB.
 - 2 - DRAINAGE AGGREGATE WRAPPED WITH A GEOTEXTILE FABRIC. SEE 33 4600 SUBDRAINAGE.
 - 3 - PERFORATED PIPE SHALL BE WRAPPED WITH A GEOTEXTILE FILTER FABRIC. SEE 33 4600 SUBDRAINAGE.

01 FOUNDATION DRAIN PIPE
Scale: N.T.S.



- NOTES:
- 1 - DRAINAGE AGGREGATE WRAPPED WITH A GEOTEXTILE FABRIC. SEE 33 4600 SUBDRAINAGE.
 - 2 - PERFORATED PIPE SHALL BE WRAPPED WITH A GEOTEXTILE FILTER FABRIC. SEE 33 4600 SUBDRAINAGE.

02 UNDERSLAB DRAINAGE
Scale: N.T.S.



MINIMUM RECOMMENDED COVER BASED ON VEHICLE LOADING CONDITIONS

PIPE DIAMETER	H-25	HEAVY CONSTRUCTION (75T AXLE LOAD)*
12" - 48"	12"	48"
54" - 60"	24"	60"

* VEHICLES IN EXCESS OF 75T MAY REQUIRE ADDITIONAL COVER

MINIMUM RECOMMENDED COVER BASED ON RAILWAY LOADING CONDITIONS

PIPE DIAMETER	COOPER E-80*
UP TO 24"	24"
30" - 36"	36"
42" - 48"	48"

* COVER IS MEASURED FROM TOP OF PIPE TO BOTTOM OF RAILWAY TIE. E-80 COVER REQUIREMENTS ARE ONLY APPLICABLE TO ASTM F-2006 PIPE.

RECOMMENDED MINIMUM TRENCH WIDTHS

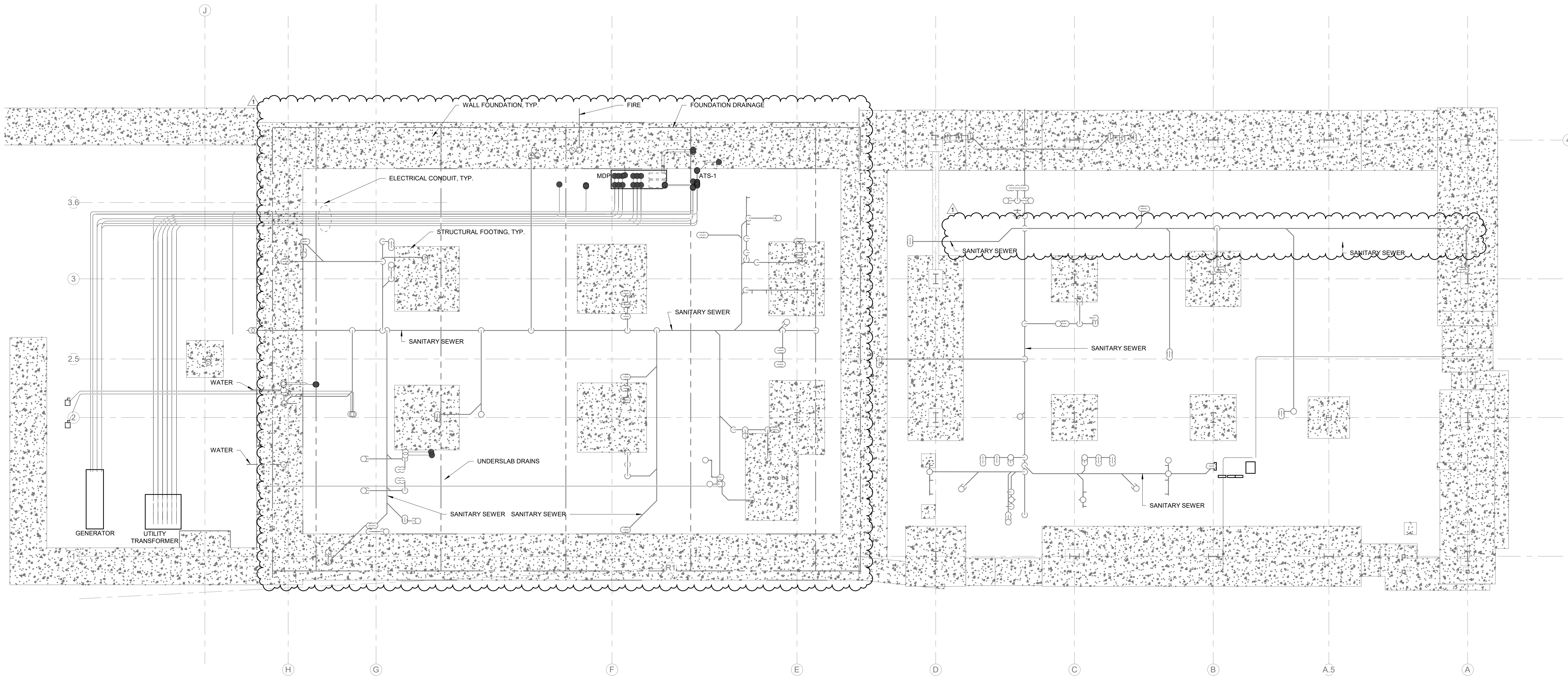
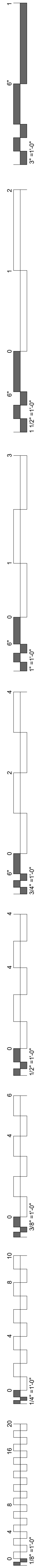
PIPE DIAMETER (IN)	MINIMUM TRENCH WIDTH (IN)
4	21
6	23
8	26
10	28
12	30
15	34
18	39
24	48
30	56
36	64
42	72
48	80
54	88
60	96

- GENERAL NOTES:
1. ALL PIPE SYSTEMS SHALL BE INSTALLED IN ACCORDANCE WITH ASTM D2021. STANDARD PRACTICE FOR UNDERGROUND INSTALLATION OF THERMOPLASTIC PIPE FOR SEWERS AND OTHER GRAVITY FLOW APPLICATIONS, LATEST EDITION.
 2. MEASURES SHOULD BE TAKEN TO PREVENT MIGRATION OF NATIVE FIRES INTO BACKFILL MATERIAL, WHEN REQUIRED.
 3. WHERE THE TRENCH BOTTOM IS UNSTABLE, THE CONTRACTOR SHALL EXCAVATE TO A DEPTH REQUIRED BY THE ENGINEER AND REPLACE WITH SUITABLE MATERIAL AS SPECIFIED BY THE ENGINEER. AS AN ALTERNATIVE AND AT THE DISCRETION OF THE DESIGN ENGINEER, THE TRENCH BOTTOM MAY BE STABILIZED USING A GEOTEXTILE MATERIAL.
 4. SUITABLE MATERIAL SHALL BE CLASS II OR III. THE CONTRACTOR SHALL PROVIDE DOCUMENTATION FOR MATERIAL SPECIFICATION TO ENGINEER. UNLESS OTHERWISE NOTED BY THE ENGINEER, MINIMUM BEDDING THICKNESS SHALL BE 4" (100mm) FOR 4-24" (100mm-600mm); 6" (150mm) FOR 30"-60" (750mm-1500mm).
 5. SUITABLE MATERIAL SHALL BE CLASS II OR III IN THE PIPE ZONE EXTENDING NOT LESS THAN 6" ABOVE CROWN OF PIPE. THE CONTRACTOR SHALL PROVIDE DOCUMENTATION FOR MATERIAL SPECIFICATION TO ENGINEER. MATERIAL SHALL BE INSTALLED AS REQUIRED IN ASTM D2021, LATEST EDITION.
 6. MINIMUM COVER, H, IN NON-TRAFFIC APPLICATIONS (GRASS OR LANDSCAPE AREAS) IS 12" FROM THE TOP OF PIPE TO GROUND SURFACE. ADDITIONAL COVER MAY BE REQUIRED TO PREVENT FLOTTATION. FOR TRAFFIC APPLICATIONS, MINIMUM COVER, H, IS 12" UP TO 48" DIAMETER PIPE AND 24" OF COVER FOR 54" DIAMETER PIPE. MEASURED FROM TOP OF PIPE TO BOTTOM OF FLEXIBLE PAVEMENT OR TO TOP OF RIGID PAVEMENT.

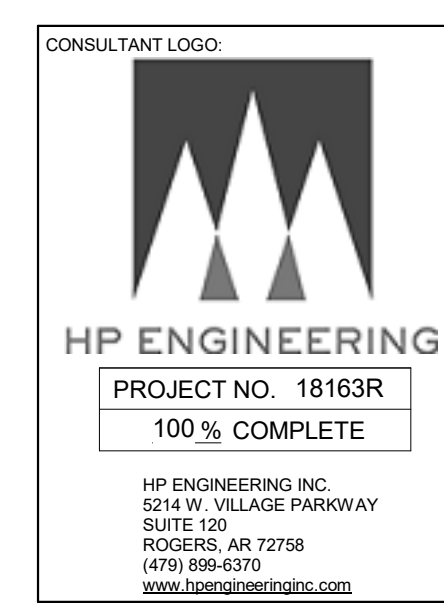
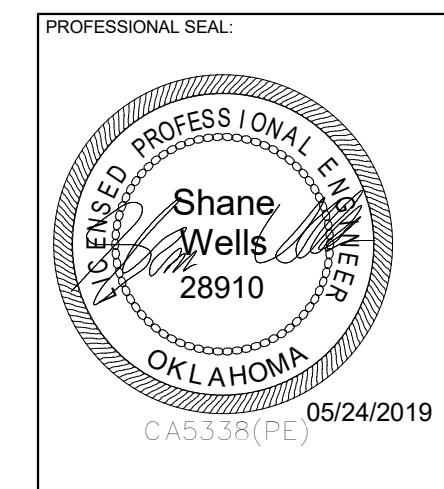
03 HDPE AND PP PIPE INSTALLATION
Scale: N.T.S.

REVISIONS

#	DATE	DESCRIPTION
1	05/24/19	BID PACKAGE 04 AS 01

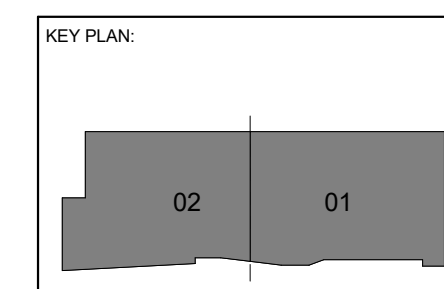


1 PLUMBING UNDERGROUND COORDINATION PLAN
1" = 10'-0"



CLIENT:

COLLEGE OF **Osteopathic Medicine**
AT THE CHEROKEE NATION
TAHLEQUAH, OKLAHOMA

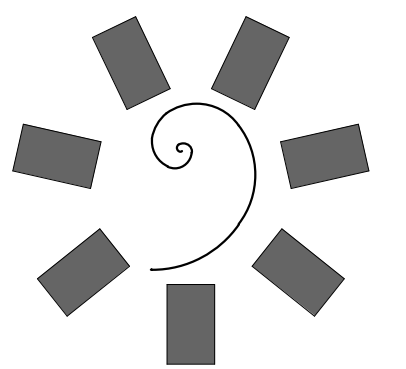


PROJECT PHASE:
BID PACKAGE 04

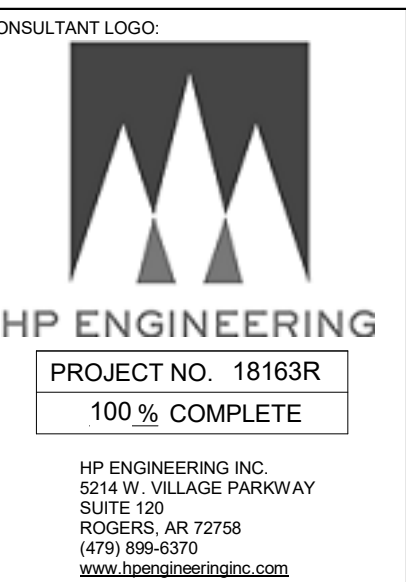
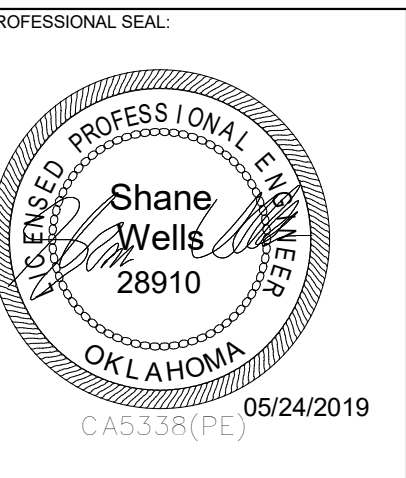
#	DATE	REVISIONS	DESCRIPTION
1	05-24-19	Bid Package 04	ASI 01

DATE: 05-16-19 JOB NUMBER: 17-13

SHEET NUMBER:
P0.02
UNDERGROUND FOOTING COORDINATION

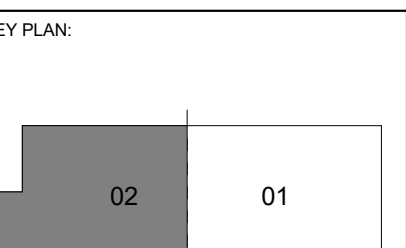
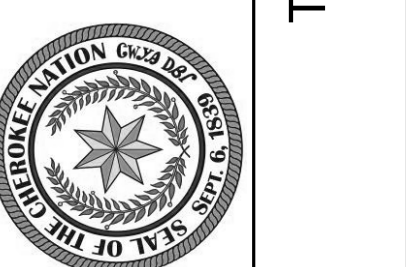


**James R. Childers
Architect, Inc.**
45 South 4th Street
Fort Smith, AR 72901
479-783-2450
www.childersarchitect.com



CLIENT:

COLLEGE OF
Osteopathic Medicine
AT THE CHEROKEE NATION
TAHLEQUAH, OKLAHOMA



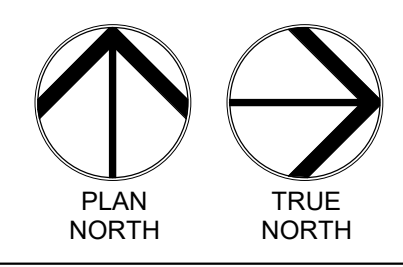
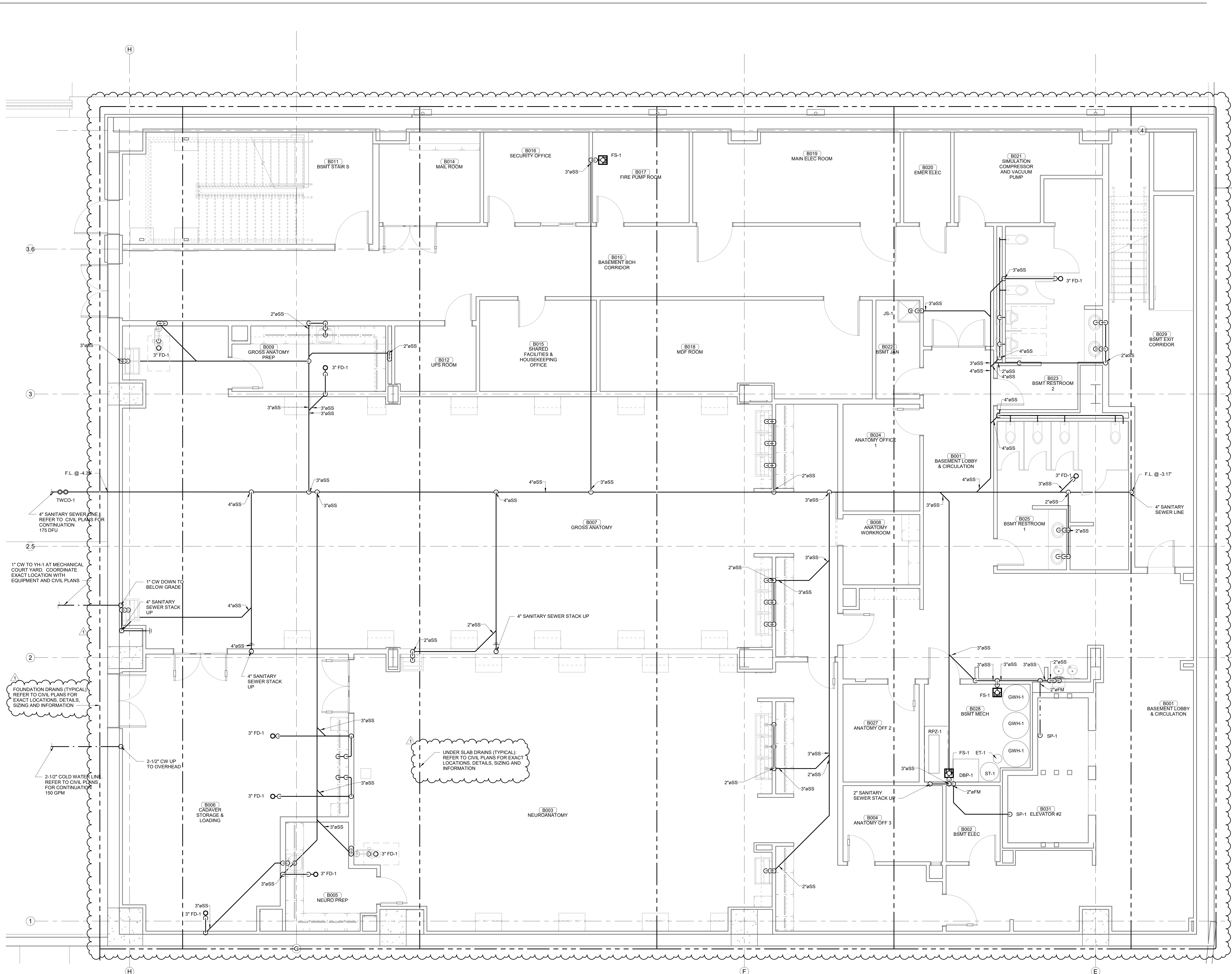
PROJECT PHASE:
BID PACKAGE 04

#	DATE	REVISIONS	DESCRIPTION
1	05-24-19	Bid Package 04	AS1.01

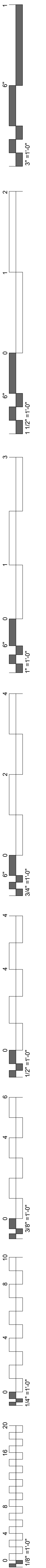
DATE: 05-16-19 JOB NUMBER: 17-13

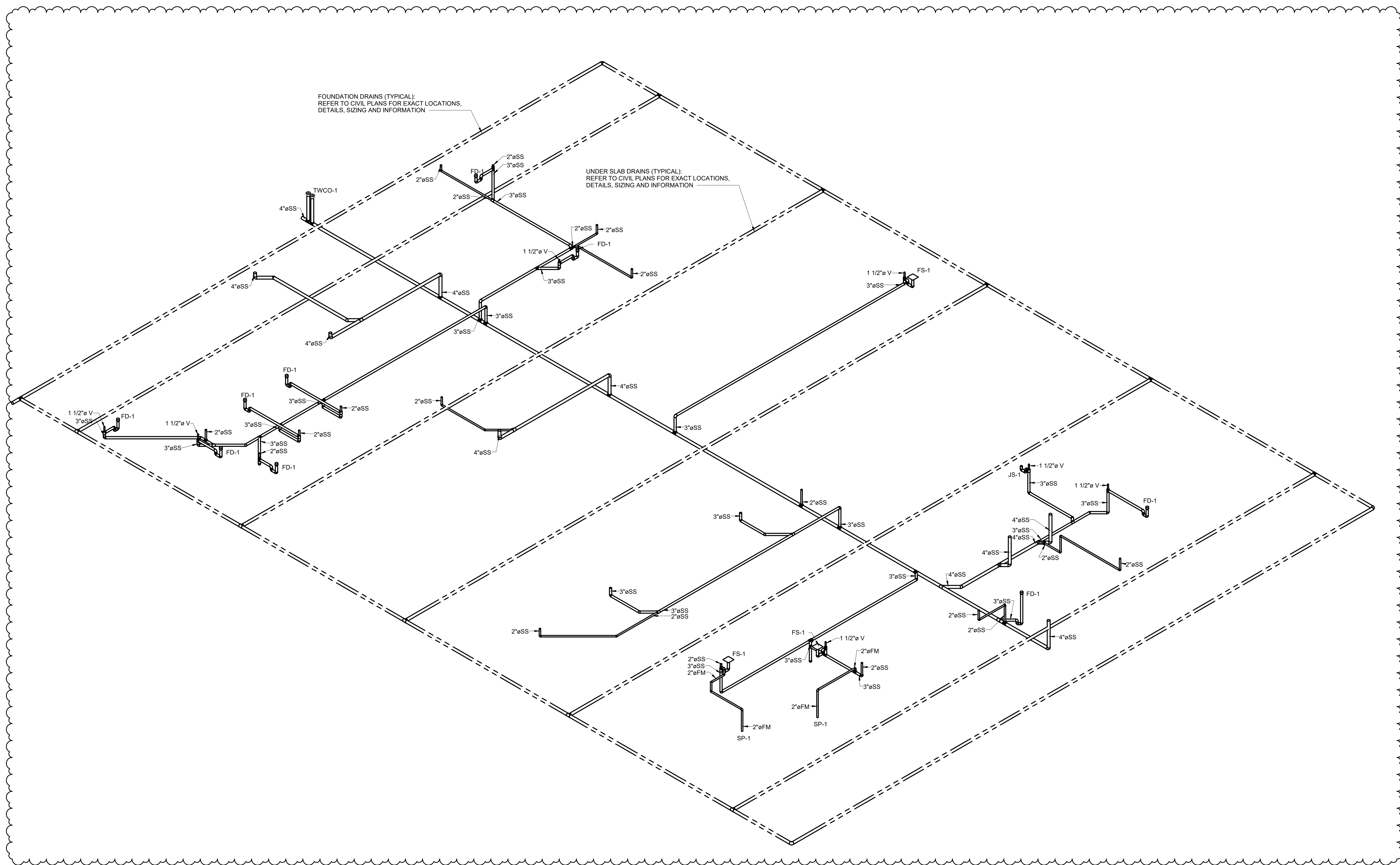
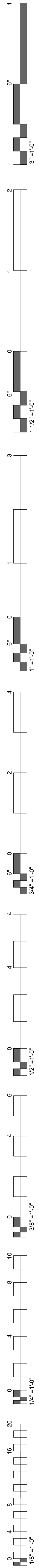
SHEET NUMBER:
P0.03

UNDERGROUND BASEMENT
PLUMBING PLAN

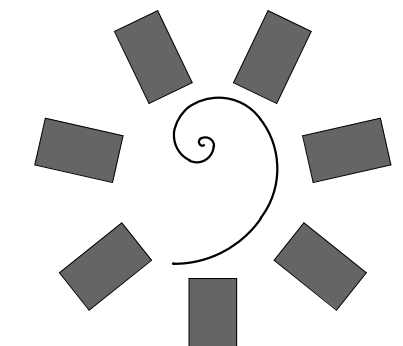


1 PLUMBING PLAN - BASEMENT
1/4" = 1'-0"





**1 UNDERGROUND PLUMBING VENT ISOMETRIC
BASEMENT LEVEL**



**James R. Childers
Architect, Inc.**
45 South 4th Street
Fort Smith, AR 72901
479-783-2450
www.childersarchitect.com

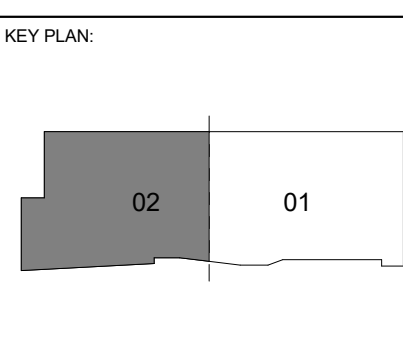


CONSULTANT LOGO

HP ENGINEERING
PROJECT NO. 18163R
100% COMPLETE
HP ENGINEERING INC.
324 W. VILLAGE PARKWAY
SUITE 120
ROGERS, AR 72719
479-686-6375
www.hpeengineering.com

CLIENT:

COLLEGE OF
Osteopathic Medicine
AT THE CHEROKEE NATION
TAHLEQUAH, OKLAHOMA



PROJECT PHASE:
BID PACKAGE 04

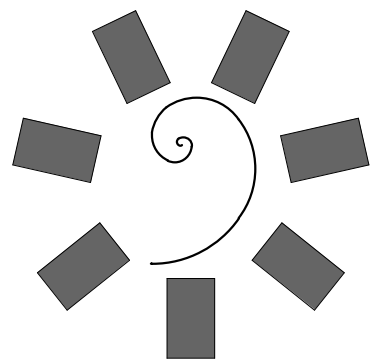
#	DATE	REVISIONS	DESCRIPTION
1	05-24-19	Bid Package 04	ASI 01

DATE: 05-16-19 JOB NUMBER: 17-13

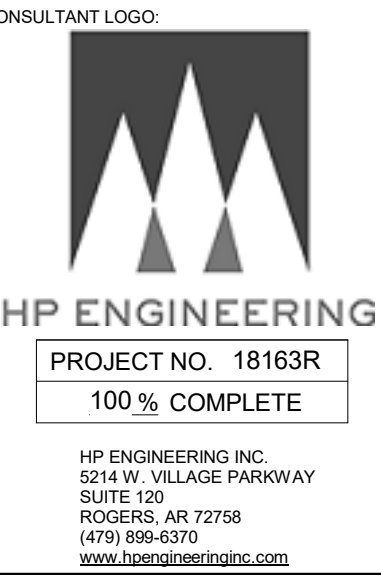
SHEET NUMBER:
P0.04

UNDERGROUND PLUMBING
VENT/DRAIN ISOMETRIC
BASEMENT

KEYNOTES
 22.20 2" MEDIUM PRESSURE GAS LINE (2 PSI). REFER TO CIVIL PLANS FOR CONTINUATION. 6847 MBH

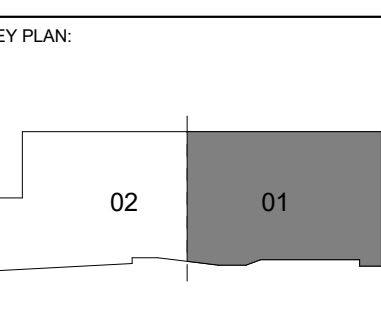
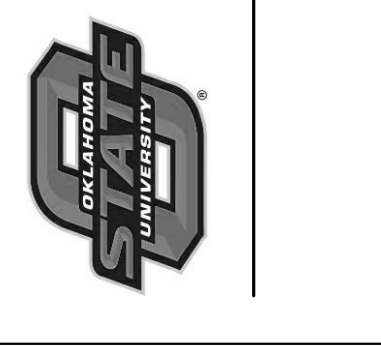


James R. Childers Architect, Inc.
 45 South 4th Street
 Fort Smith, AR 72901
 479-783-2450
 www.childersarchitect.com



CLIENT:

COLLEGE OF **Osteopathic Medicine**
 AT THE CHEROKEE NATION
 TAHLEQUAH, OKLAHOMA



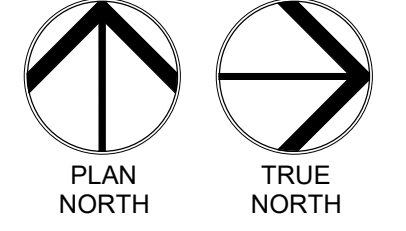
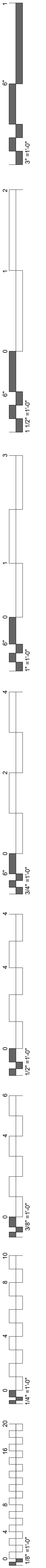
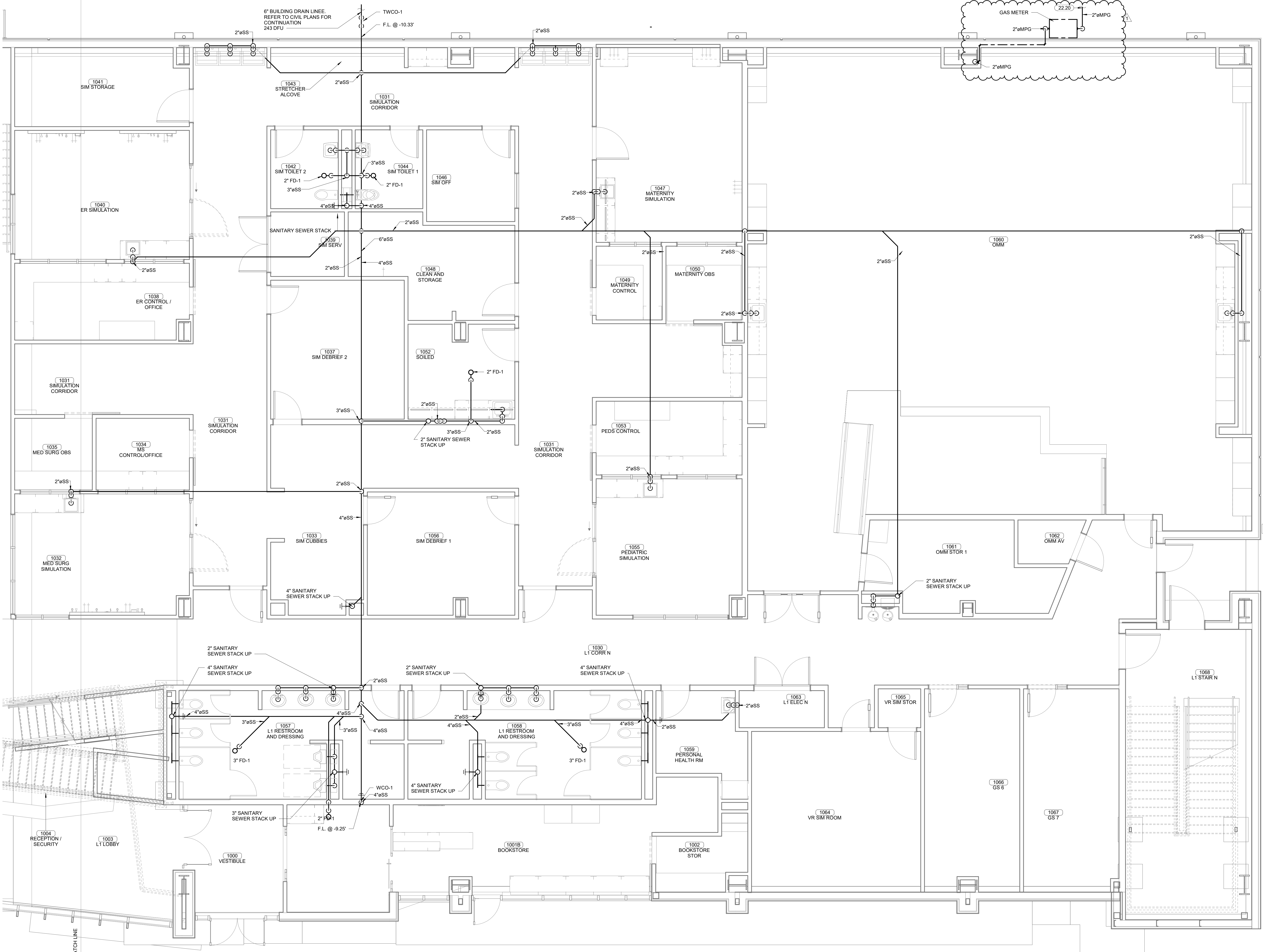
PROJECT PHASE:
 BID PACKAGE 04

#	DATE	REVISIONS	DESCRIPTION
1	05-24-19	Bid Package 04	AS1.01

DATE: 05-16-19 JOB NUMBER: 17-13

SHEET NUMBER: P0.06

UNDERGROUND LEVEL 01
 PLUMBING PLAN



1 PLUMBING PLAN - LEVEL 1 SECTOR 1
 1/4" = 1'-0"