

This document, and the ideas and designs incorporated herein, as an instrument of professional service, is the property of EDMONDSON REED & ASSOCIATES, and is not to be used, in whole or in part, for any other project, without the written authorization of EDMONDSON REED & ASSOCIATES.

CONSULTANTS

ARCHITECTURE
JCF Architecture
120 Hayslope Avenue
Suite 400
Hartford, CT 06106
860-247-9226

STRUCTURAL ENGINEERING
Chavez-Greaves Consulting Engineers, Inc.
4700 Lincoln Road NE
Suite 102
Albuquerque, NM 87109
505-344-4080

MEP ENGINEERING
MSA Engineering Consultants
370 E. Windmill Ln.
Suite 100
Las Vegas, NV 89123
702-896-1100

CIVIL ENGINEERING / SURVEYING
Native Plains Surveying and Mapping / RK & Associates PLC
5807 S. Garnett Rd.
Suite K
Tulsa, OK 74146
918-254-7596

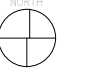
LOW VOLTAGE / THEME LIGHTING
M/E Engineers
60 Lakewood Boulevard
Suite 200
Buffalo, NY 14202
716-845-5092

Cherokee Hard Rock Hotel & Casino

PROJECT

EXTERIOR FACADE RENOVATION

KEY PLAN

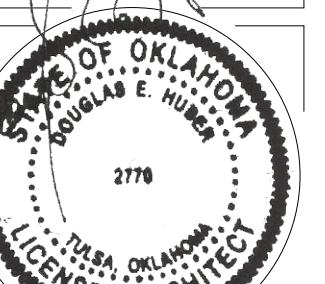


No.	Description	Date
1	BULLETIN 01	04/24/2019

SHEET TITLE
DEMOLITION ELEVATIONS

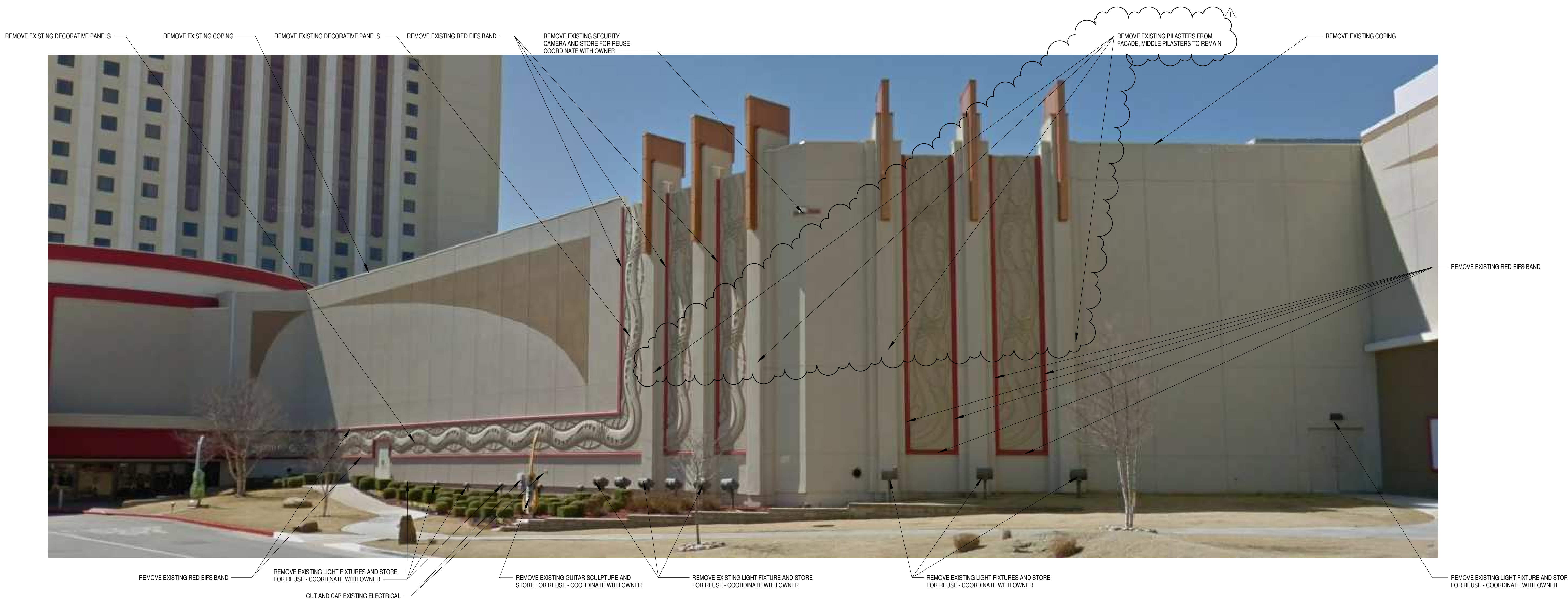
CONSTRUCTION SET

PROJECT NO: H17018
DRAWN BY: Author
CHECKED BY: Checker
ISSUE DATE: 12/21/2018



AD-201
Scale 1/2" = 1'-0"

4/24/2019



C1 CASINO 2 EAST FACADE



A1 CASINO 3 SOUTHEAST ELEVATION

4/23/2019 2:38:13 PM



EIFS LEGEND		
NUMBER	NAME	TEXTURE
EIFS-1	DRYKIT 454A - STONE GRAY 30% DARKER	SAND FINE
EIFS-2	SW 6165 - GOSSAMER VEIL	SMOOTH
EIFS-3	SW 6143 - BASKET BEIGE	SMOOTH
EIFS-4	WOOD LOOK EIFS	WOOD GRAIN
EIFS-5	SW 6537 - LUXE BLUE	SMOOTH

NOTE: TOP EDGE PROFILE FOR METAL PANELS TO BE DETERMINED

This document, and the ideas and designs incorporated herein, as an instrument of professional service, is the property of EDMONDSON REED & ASSOCIATES, and is not to be used, in whole or in part, for any other project, without the written authorization of EDMONDSON REED & ASSOCIATES.

CONSULTANTS

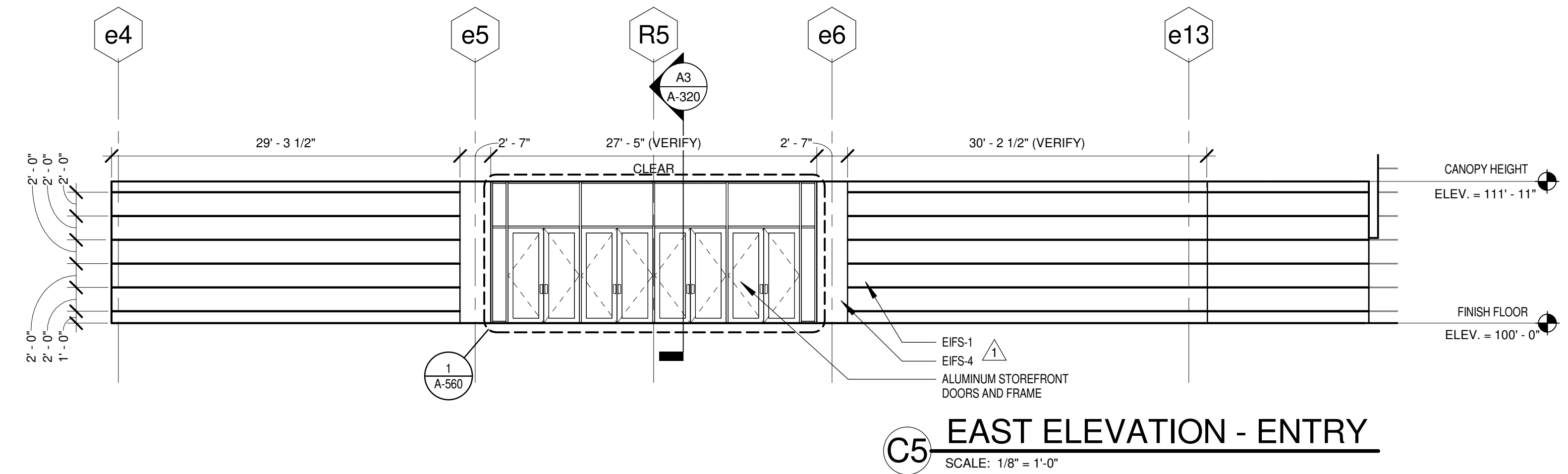
ARCHITECTURE
JCF Architecture
120 Hayslope Avenue
Suite 400
Hartford, CT 06106
860-247-9226

STRUCTURAL ENGINEERING
Chavez-Greaves Consulting Engineers, Inc.
4700 Lincoln Road NE
Suite 102
Albuquerque, NM 87109
505-344-4080

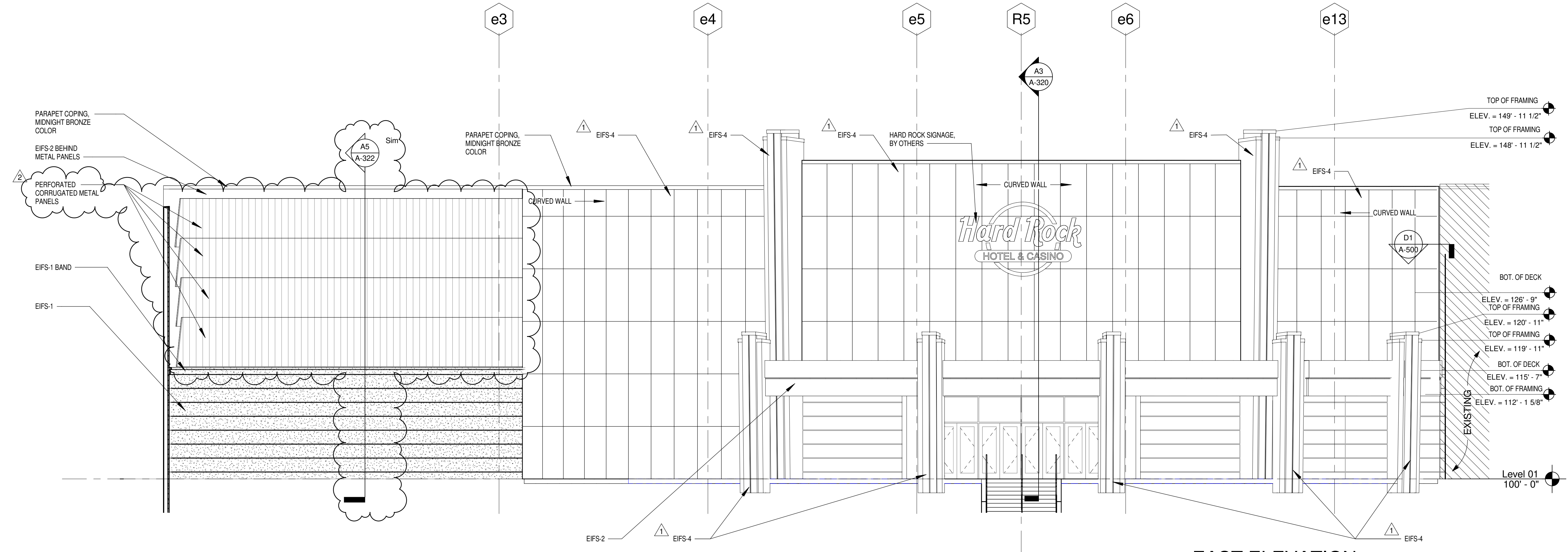
MEP ENGINEERING
MSA Engineering Consultants
370 E. Windmill Ln.
Suite 100
Las Vegas, NV 89123
702-896-1100

CIVIL ENGINEERING / SURVEYING
Native Plains Surveying and Mapping / RK & Associates PLC
5907 S. Garnett Rd.
Suite K
Tulsa, OK 74146
918-254-7596

LOW VOLTAGE / THEME LIGHTING
M/E Engineers
60 Lakewood Boulevard
Suite 200
Buffalo, NY 14202
716-845-5092



C5 EAST ELEVATION - ENTRY
SCALE: 1/8" = 1'-0"



A5 EAST ELEVATION
SCALE: 1/8" = 1'-0"

Cherokee Hard Rock Hotel & Casino

EXTERIOR FACADE RENOVATION

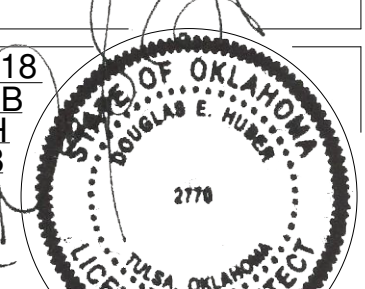
KEY PLAN

No.	Description	Date
1	ADDENDUM 01	02/28/2019
2	BULLETIN 01	04/24/2019

EXTERIOR ELEVATIONS

CONSTRUCTION SET

PROJECT NO: H17018
DRAWN BY: BJB
CHECKED BY: DH
ISSUE DATE: 12/21/2018



A-201

Scale As indicated

4/24/2019

4/23/2019 2:28:55 PM



This document, and the ideas and designs incorporated herein, as an instrument of professional service, is the property of EDMONDSON REED & ASSOCIATES, and is not to be used, in whole or in part, for any other project, without the written authorization of EDMONDSON REED & ASSOCIATES.

CONSULTANTS

ARCHITECTURE
JCJ Architecture
120 Hayslope Avenue
Suite 400
Hartford, CT 06106
860-247-9226

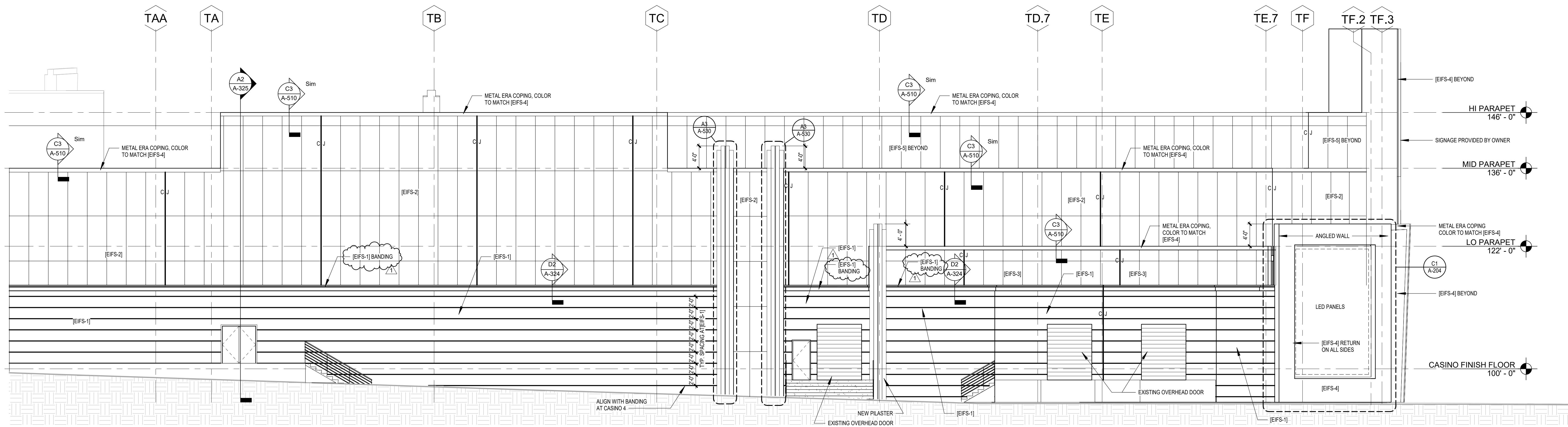
STRUCTURAL ENGINEERING
Chavez-Greaves Consulting Engineers, Inc.
4700 Lincoln Road NE
Suite 102
Albuquerque, NM 87109
505-344-4080

MEP ENGINEERING
MSA Engineering Consultants
370 E. Windmill Ln.
Suite 100
Las Vegas, NV 89123
702-896-1100

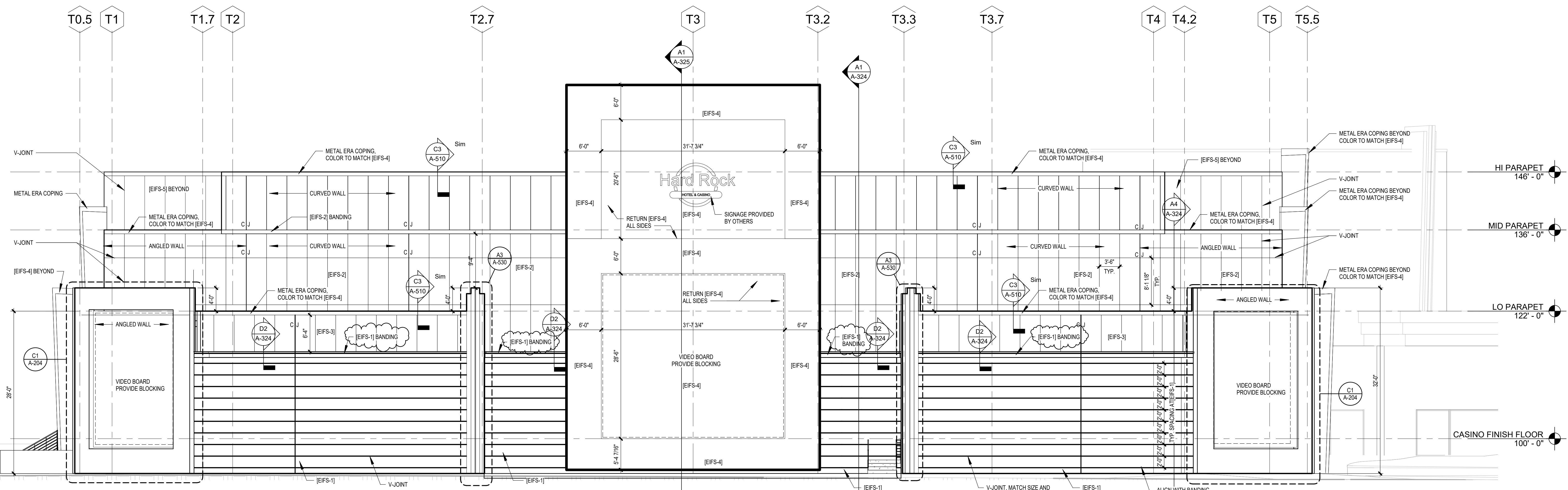
CIVIL ENGINEERING / SURVEYING
Native Plains Surveying and Mapping / RK & Associates PLC
3907 S. Garnett Rd.
Suite K
Tulsa, OK 74146
918-254-7596

LOW VOLTAGE / THEME LIGHTING
M/E Engineers
60 Lakewood Boulevard
Suite 200
Buffalo, NY 14202
716-845-5092

EIFS LEGEND		
NUMBER	NAME	TEXTURE
EIFS-1	DRYWIT 454A - STONE GRAY 30% DARKER	SAND FINE
EIFS-2	SW 9165 - GOSSAMER VEL	SMOOTH
EIFS-3	SW 4133 - BAMPFELGE	SMOOTH
EIFS-4	SW 7095 - SCALPSON	SAND FINE
EIFS-5	SW 6507 - DUKE BLUE	SMOOTH



C1 SOUTH ELEVATION
1/8" = 1'-0"



A1 EAST ELEVATION
1/8" = 1'-0"

EXTERIOR FACADE RENOVATION

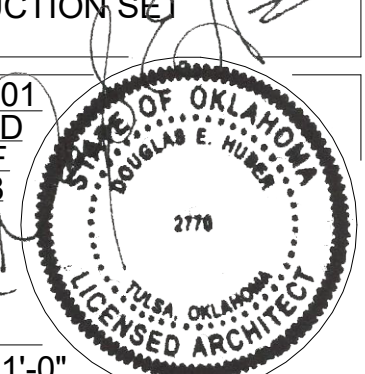
KEY PLAN

No.	Description	Date
1	BULLETIN 1	04/24/2019

SHEET TITLE
EXTERIOR ELEVATIONS

CONSTRUCTION SET

PROJECT NO: H17018.01
DRAWN BY: AMD
CHECKED BY: GEF
ISSUE DATE: 12/21/2018



A-203

Scale 1/8" = 1'-0"

4/24/2019

Cherokee Hard Rock Hotel & Casino

4/23/2019 12:46:39 PM

This document, and the ideas and designs incorporated herein, are an instrument of professional service, is the property of EDMONDSON REED & ASSOCIATES, and is not to be used, in whole or in part, for any other project, without the written authorization of EDMONDSON REED & ASSOCIATES.

CONSULTANTS

ARCHITECTURE
JCY Architecture
120 Hayslope Avenue
Suite 400
Hartford, CT 06106
860-247-9226

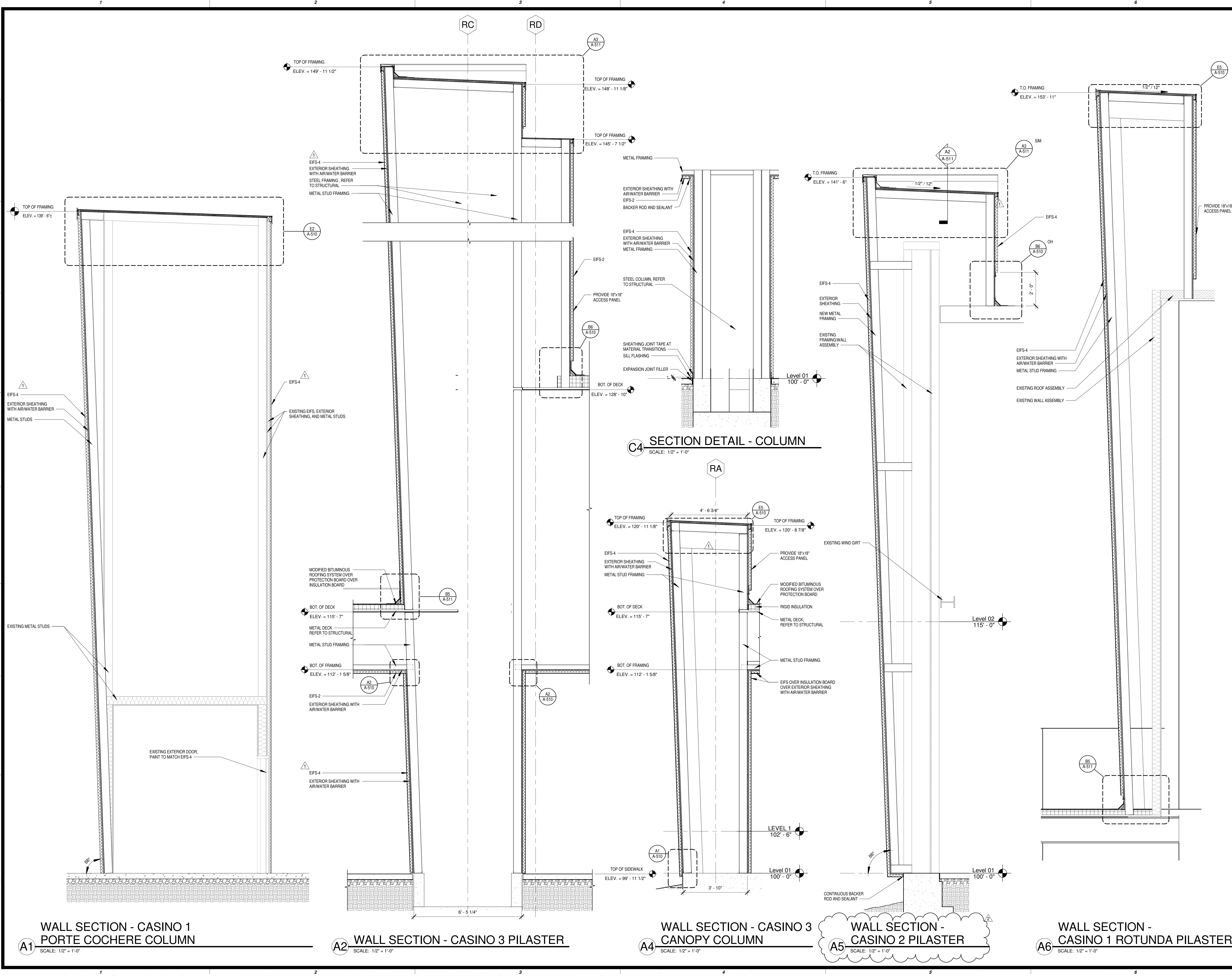
STRUCTURAL ENGINEERING
Chavez-Greves Consulting Engineers, Inc.
4700 Lincoln Road NE
Suite 102
Albuquerque, NM 87109
505-344-4080

MEP ENGINEERING
MSR Engineering Consultants
370 E. Windmill Ln.
Suite 100
Las Vegas, NV 89123
702-896-1100

CIVIL ENGINEERING / SURVEYING
Native Plains Surveying and Mapping / RK & Associates PLC
3807 S. Garnett Rd.
Suite K
Tulsa, OK 74146
918-254-7596

LOW VOLTAGE / THEME LIGHTING
M/E Engineers
60 Lakewood Boulevard
Suite 200
Buffalo, NY 14202
716-845-5092

Cherokee Hard Rock Hotel & Casino



A1 WALL SECTION - CASINO 1
PORTE COCHERE COLUMN
SCALE: 1/2" = 1'-0"

A2 WALL SECTION - CASINO 3
PILASTER
SCALE: 1/2" = 1'-0"

A4 WALL SECTION - CASINO 3
CANOPY COLUMN
SCALE: 1/2" = 1'-0"

A5 WALL SECTION - CASINO 2
PILASTER
SCALE: 1/2" = 1'-0"

A6 WALL SECTION - CASINO 1
ROTUNDA PILASTER
SCALE: 1/2" = 1'-0"

EXTERIOR FACADE RENOVATION

KEY PLAN

No.	Description	Date
1	ADDENDUM 01	02/28/2019
2	BULLETIN 01	04/24/2019

CONSTRUCTION SET

PROJECT NO: H17018
DRAWN BY: BJB/DH
CHECKED BY: [Signature]
ISSUE DATE: 12/21/2018

A-323
Scale: 1/2" = 1'-0"

4/24/2019

SHEET NOTES:
 1 FURNISH AND INSTALL NEW CIRCUIT BREAKER INDICATED WITH ALL REQUIRED MOUNTING HARDWARE. NEW BREAKER AIC SHALL MATCH EXISTING.



This document, and the ideas and designs incorporated herein, as an instrument of professional service, is the property of EDMONDSON REED & ASSOCIATES, and is not to be used, in whole or in part, for any other project, without the written authorization of EDMONDSON REED & ASSOCIATES.

CONSULTANTS

ARCHITECTURE
 JCT Architecture
 120 Hayslope Avenue
 Suite 400
 Hartford, CT 06106
 860-247-9225

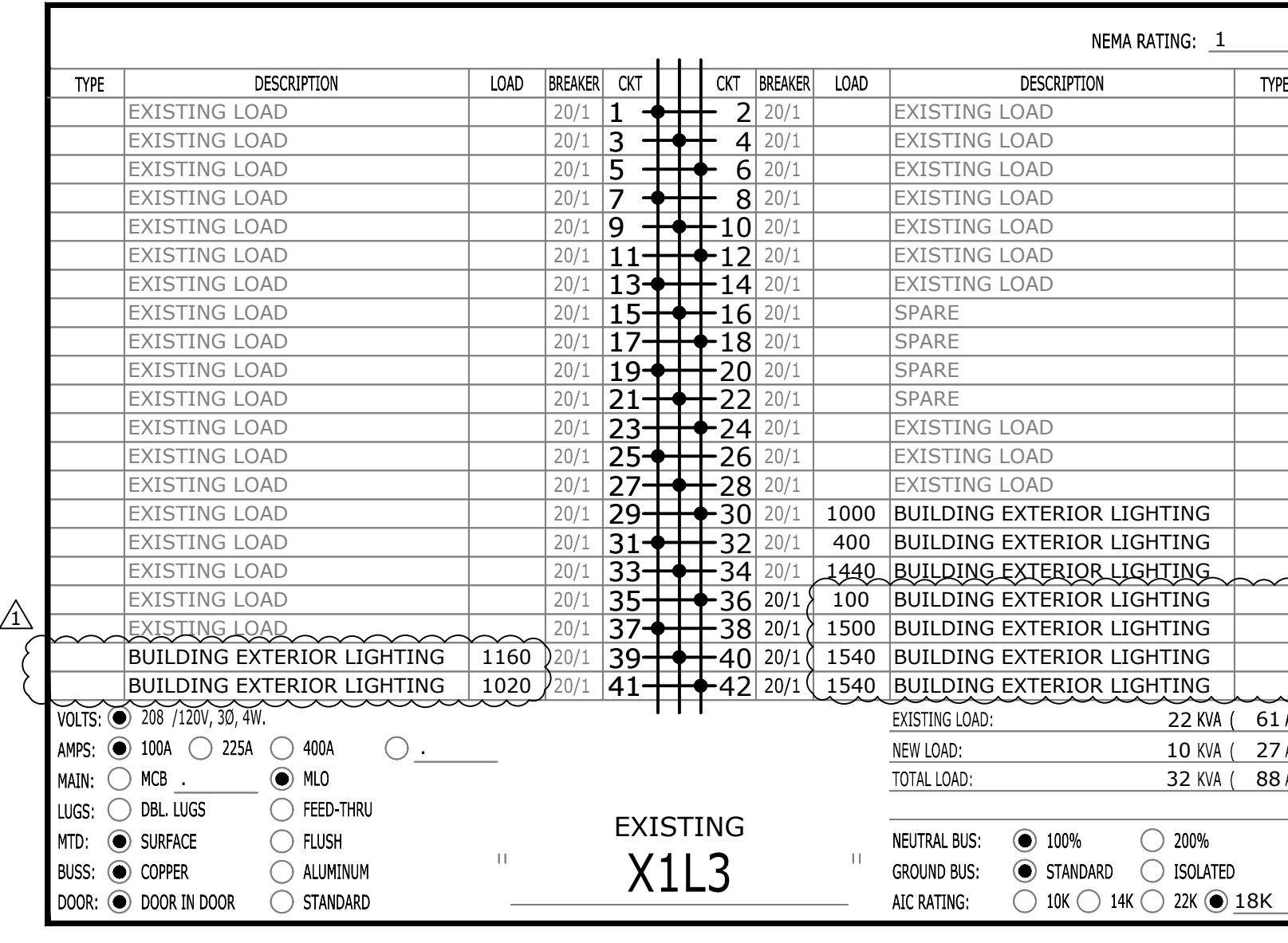
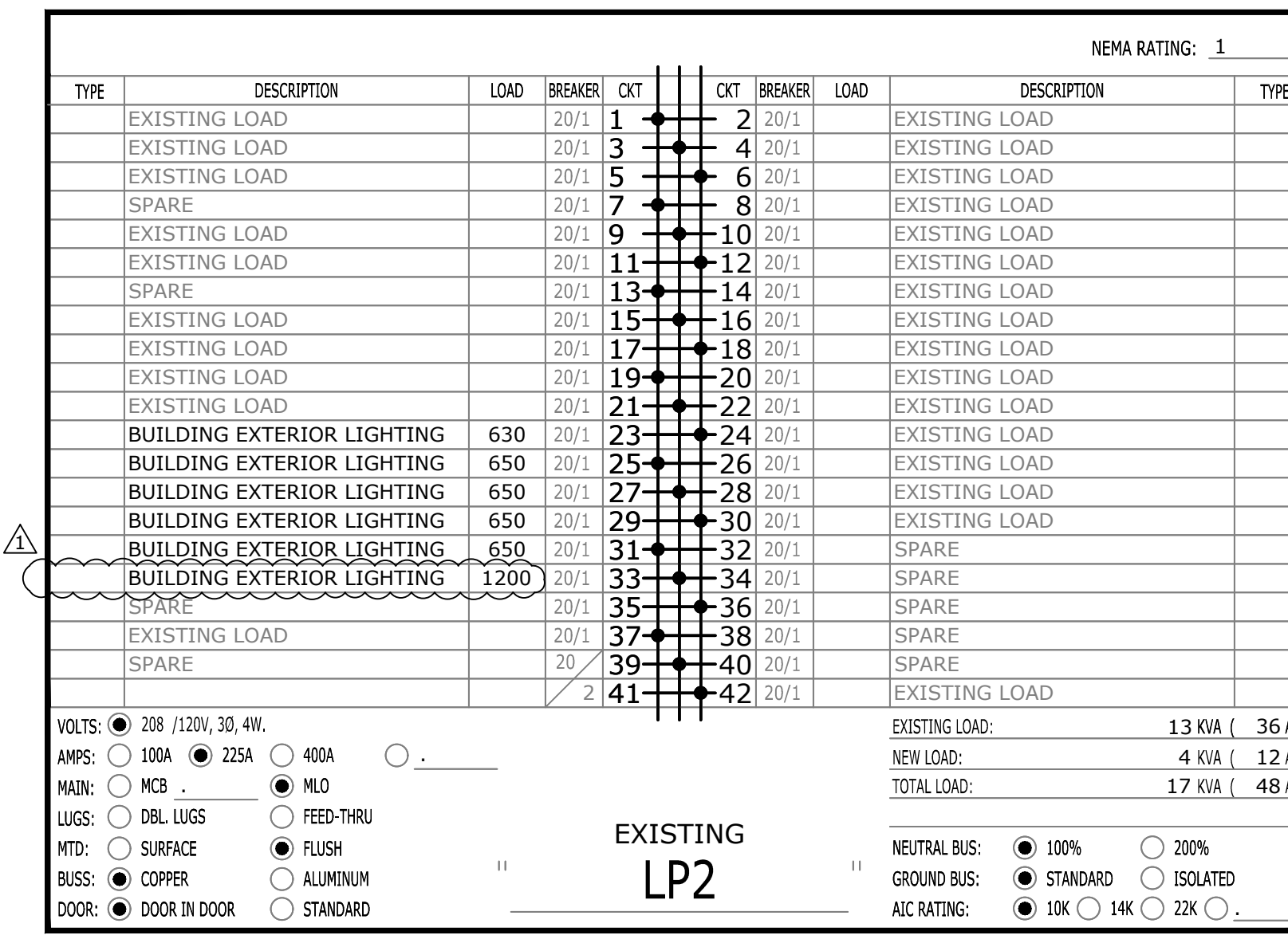
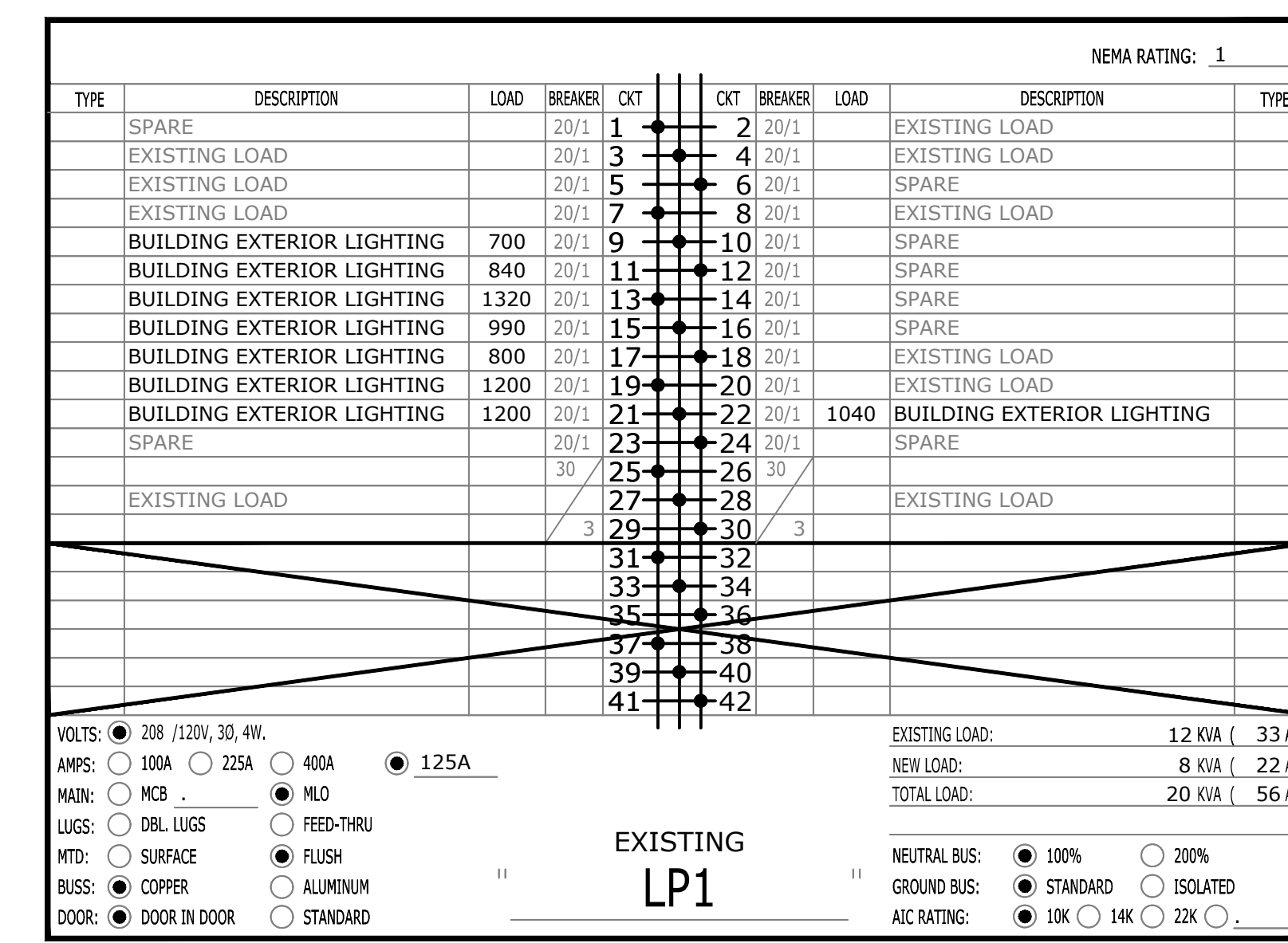
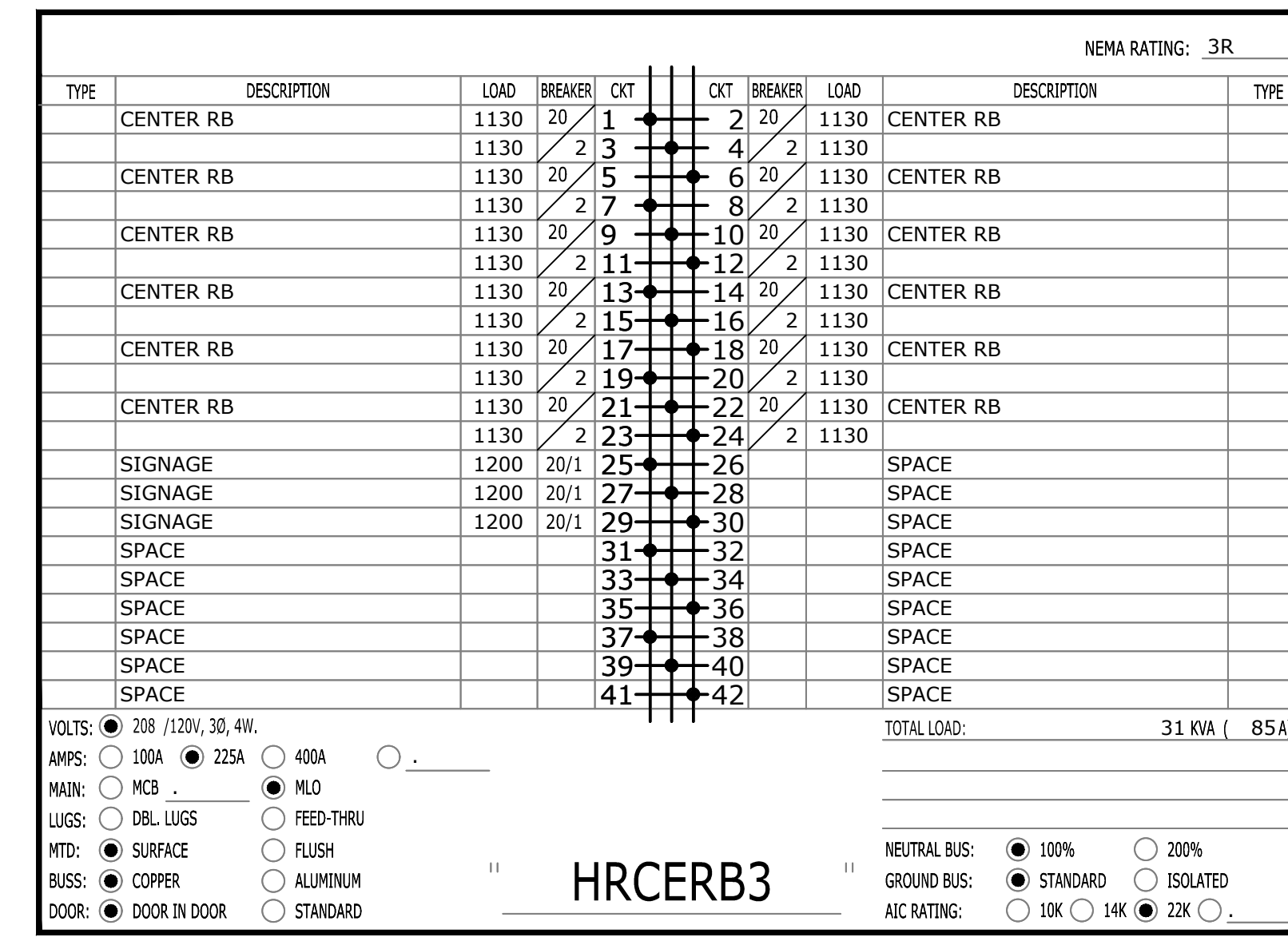
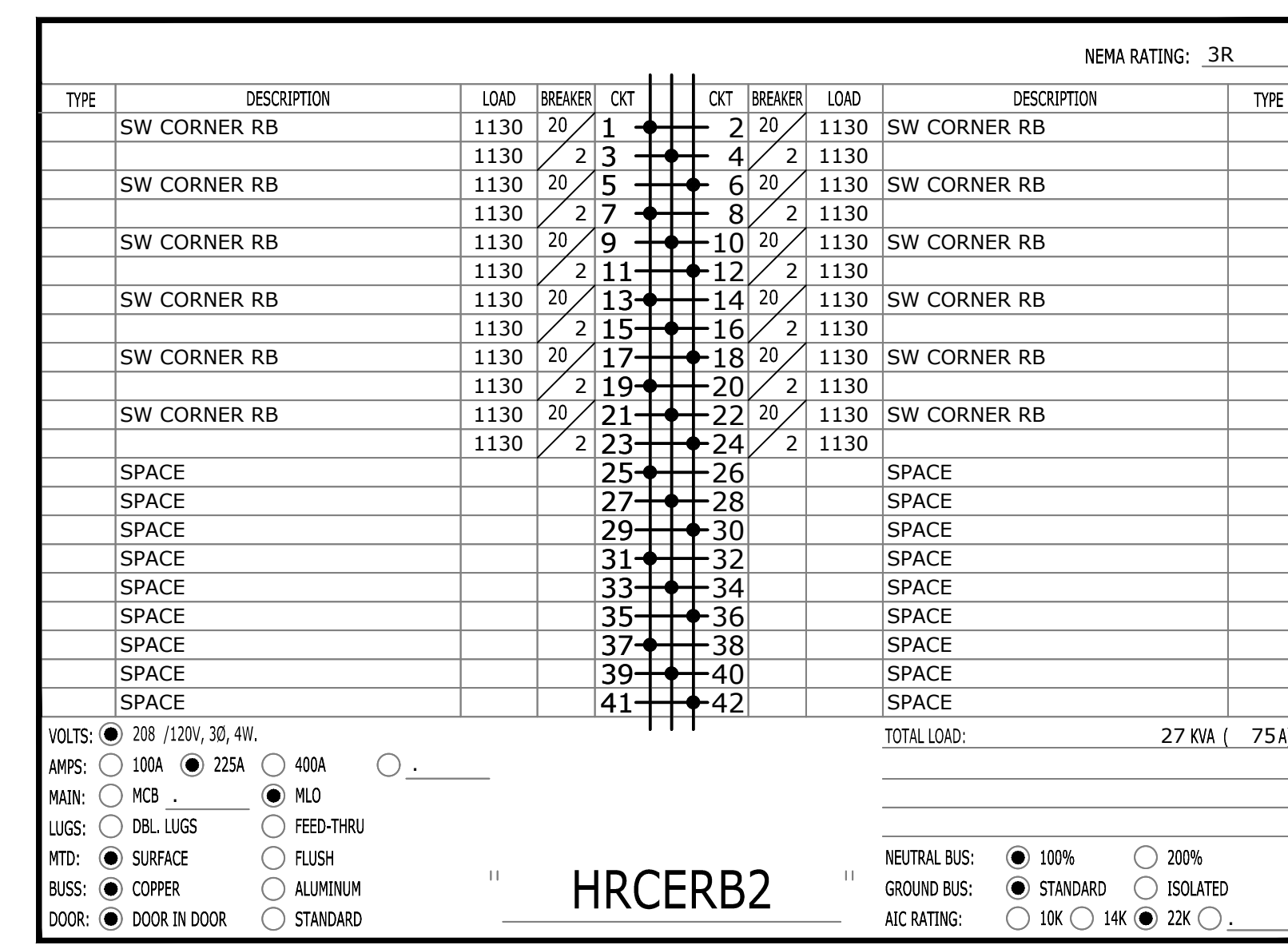
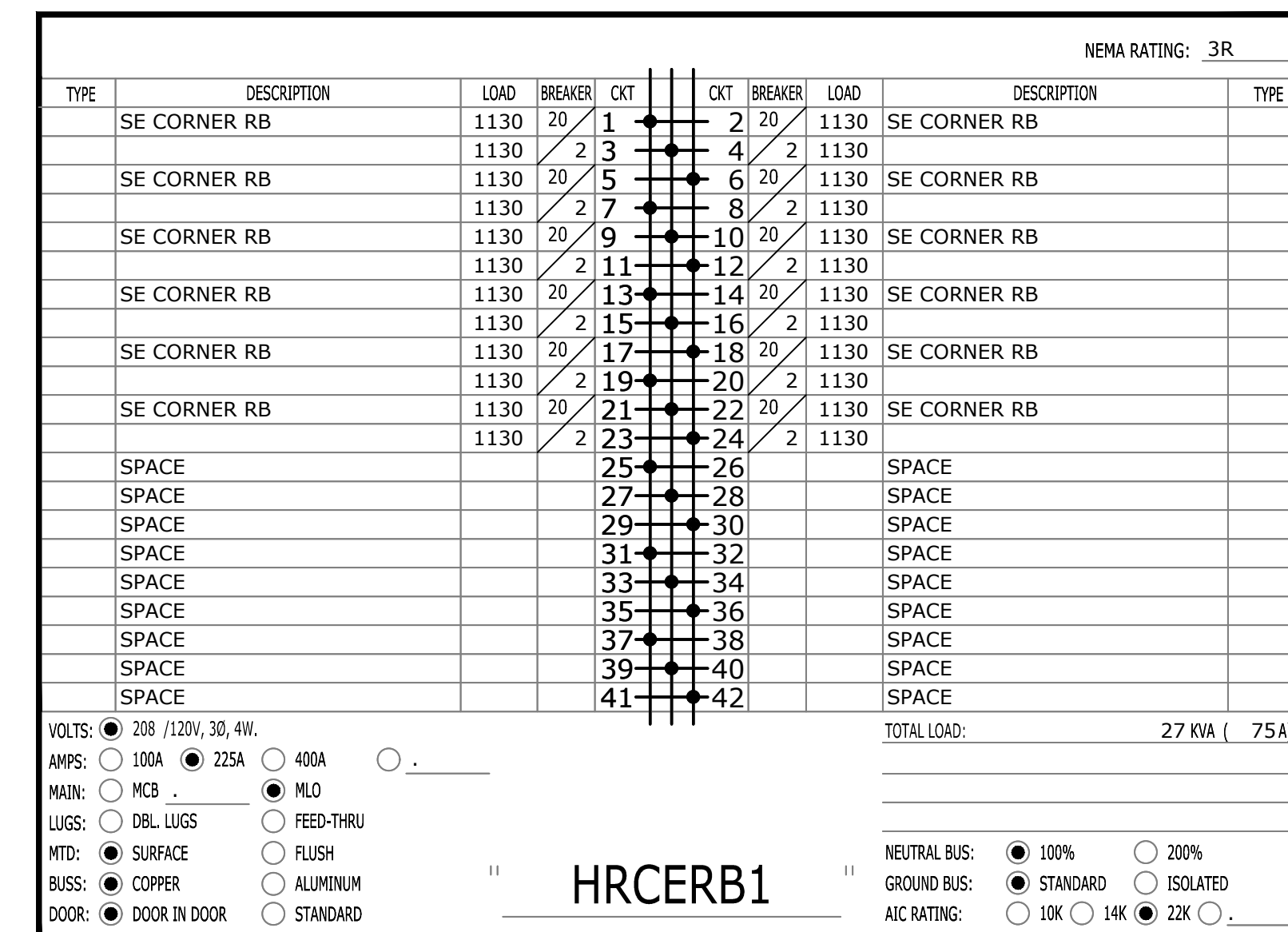
STRUCTURAL ENGINEERING
 Chavez-Greaves Consulting Engineers, Inc.
 4700 Lincoln Road NE
 Suite 102
 Albuquerque, NM 87109
 505-344-4080

MEP ENGINEERING
 MSA Engineering Consultants
 370 E. Wrentham Ln.
 Suite 100
 Las Vegas, NV 89123
 702-696-1100

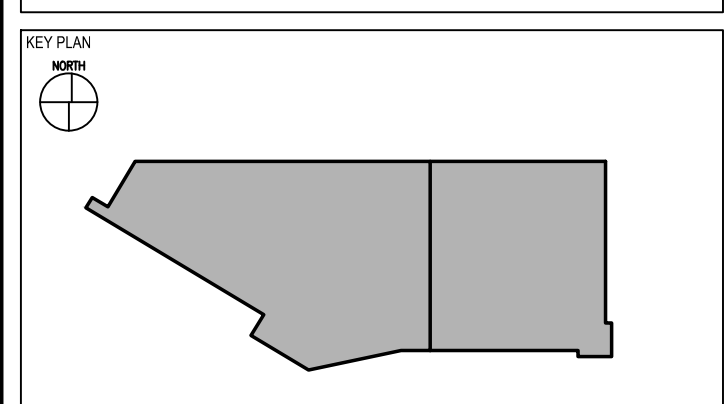
CIVIL ENGINEERING / SURVEYING
 Native Plains Surveying and Mapping / RK & Associates PLLC
 5807 S. Garner Rd., Suite K
 Tulsa, OK 74146
 918-224-7596

LOW VOLTAGE / THEME LIGHTING
 ME Engineers
 60 Lakemont Boulevard
 Suite 200
 Buffalo, NY 14202
 716-645-0592

Cherokee Hard Rock Hotel & Casino



EXTERIOR FACADE RENOVATION



No.	Description	Date
1	BULLETIN #1	04/24/2019

PANEL SCHEDULES

CONSTRUCTION SET

PROJECT NO: L17325 01
 DRAWN BY: MSA
 CHECKED BY: DAVID J. HILL
 ISSUE DATE: 12/21/2018

E-003
 Scale AS NOTED

