

This document, and the ideas and designs incorporated herein, as an instrument of professional service, is the property of EDMONDSON REED & ASSOCIATES, and is not to be used, in whole or in part, for any other project, without the written authorization of EDMONDSON REED & ASSOCIATES.

CONSULTANTS

ARCHITECTURE
Edmondson Reed & Associates
15 West 6th Street, Suite 2507
Tulsa, OK 74119
918-576-6700

MEP ENGINEERING
MSA Engineering Consultants
370 E. Windmill Ln.
Suite 100
Las Vegas, NV 89123
702-886-1100

AUDIO VISUAL
Hard Rock Audio/Visual
777 W Cherokee St
Catoosa, OK 74015
800-760-6700

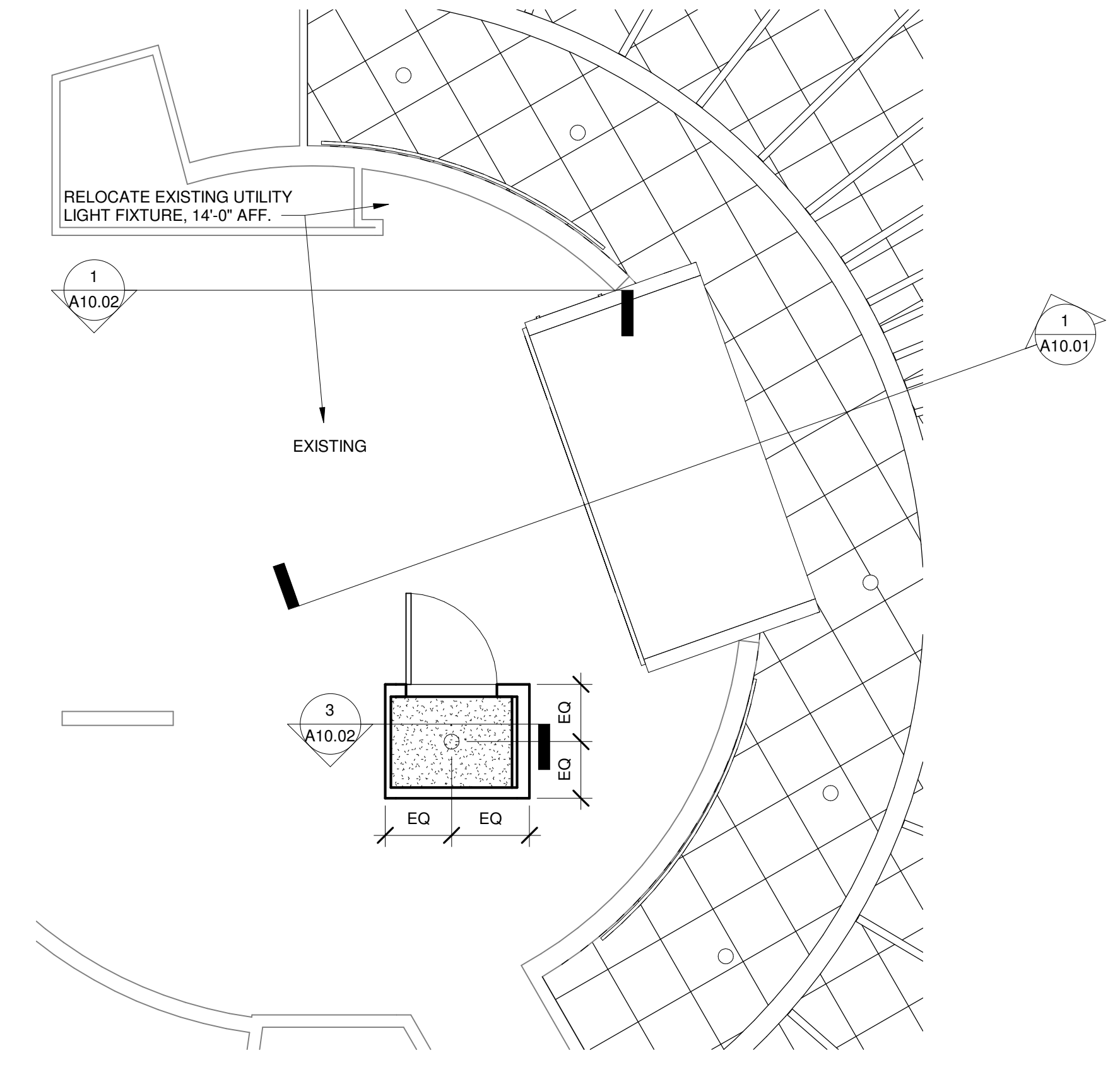
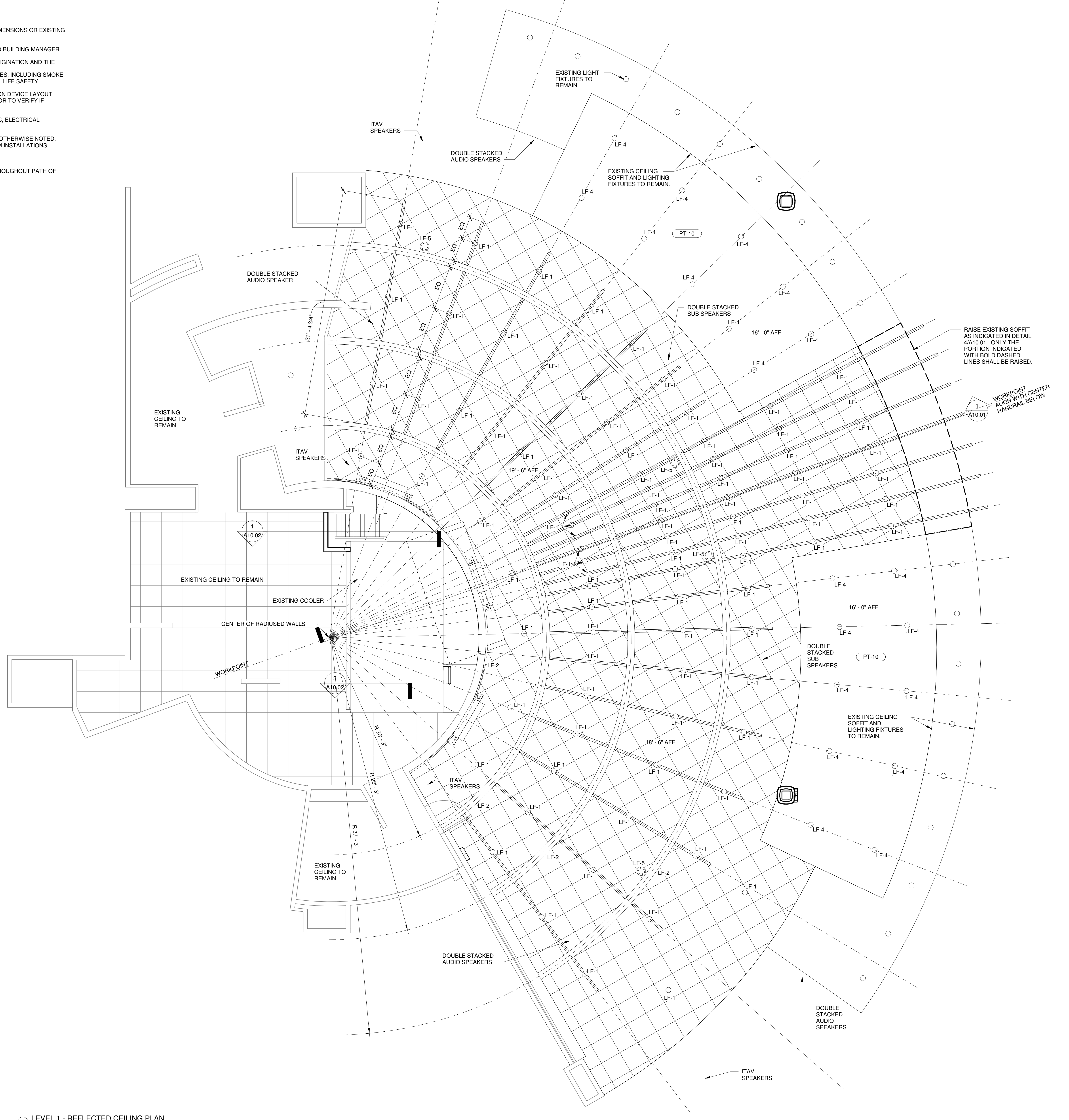
FOOD SERVICE
HESMAN Group, LLC
Post Office Box 30692
Edmond, OK 73003
918-935-5036

BEVERAGE SPECIALISTS
Chil-Rito 32
2371 Gause Blvd.
West Shiloh, LA 70460
800-256-2190

THEATRICAL PRODUCTION
Kevin Stewart Productions
187 E Warm Springs Road, Suite 8156
Las Vegas, NV 89119
702-788-4748

GENERAL CEILING PLAN NOTES:

1. CONTACT ARCHITECT OR INTERIOR DESIGNER FOR LIGHT FIXTURE RELOCATIONS IF THERE ARE CONFLICTS WITH DIMENSIONS OR EXISTING ELEMENTS ABOVE CEILING.
2. REPAIR OR RELOCATE EXISTING THERMOSTATS AFFECTED BY DEMOLITION/CONSTRUCTION.
3. SUBMIT CITY APPROVED FIRE PROTECTION PLAN FOR SPRINKLER RELOCATION AND FIRE SAFETY REQUIREMENTS TO BUILDING MANAGER FOR APPROVAL.
4. ANY LIGHT SWITCHES OR ELECTRICAL OUTLET TO BE DELETED ARE TO BE REMOVED BACK TO THEIR SOURCE OF ORIGATION AND THE WALL PATCHES TO MATCH EXISTING.
5. FIRE PROTECTION CONTRACTOR TO VERIFY REQUIREMENTS, QUANTITY, AND LOCATION OF FIRE PROTECTION DEVICES, INCLUDING SMOKE DETECTORS, FIRE ALARMS, SPEAKERS, STROBES, ETC. INCLUDE COSTS TO TIE SUCH DEVICES INTO BUILDING PANEL LIFE SAFETY INSTALLATIONS TO MEET TRIBAL AND/OR LOCAL CITY REQUIREMENTS.
6. CONTRACTOR TO LOCATE FIRE ALARM STROBES PER CODE. BUILDING MANAGEMENT MUST REVIEW FIRE PROTECTION DEVICE LAYOUT PRIOR TO CITY REVIEW AND APPROVAL. ALL STROBES ARE TO BE SYNCED TO FLASH AT THE SAME TIME. CONTRACTOR TO VERIFY IF STROBES IN BUILDING HALL OUTSIDE OF SHOCK SPACE ARE TO BE SYNCED AT THE SAME TIME.
7. SUSPENDED CEILING HEIGHT IS SET AT EXISTING HEIGHT (V.I.F.)
8. THE CEILING CONTRACTOR SHALL CLOSELY COORDINATE HIS WORK WITH THAT OF THE MILLWORK, PLUMBING, HVAC, ELECTRICAL CONTRACTORS.
9. ANY NEW CEILING GRID INSTALLATION SHALL BE SQUARE, LEVEL, AND ALIGNED.
10. CEILING IN CLOSETS SHALL BE OF THE SAME HEIGHT AND CONSTRUCTION AS THAT OF ADJOINING SPACE, UNLESS OTHERWISE NOTED.
11. CONTRACTOR SHALL REPAIR AND/OR REPLACE CEILING TILES WHICH ARE REMOVED TO FACILITATE PLENUM SYSTEM INSTALLATIONS.
12. RELOCATE EXISTING CEILING LIGHTS TO NEW LOCATIONS SHOWN ON THIS DRAWING.
13. RELOCATE FIRE SPRINKLER HEADS AS REQUIRED WITH NEW ROOM LAYOUT.
14. FRAME NEW WALLS TO BOTTOM OF CEILING.
15. CONTRACTOR TO VERIFY EMERGENCY EGRESS LIGHTING MAINTAINS 1 FOOT CANDLE OF LIGHT AT FLOOR LEVEL THROUGHOUT PATH OF EGRESS.
16. STRUCTURE, HVAC, AND ALL EQUIPMENT ABOVE CEILING TO ALL BE PAINTED MATTE BLACK.
17. ALL SPEAKERS TO BE MOUNTED BELOW SUBGRID AND SOFFITS.



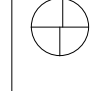
1 LEVEL 1 - REFLECTED CEILING PLAN
1/4" = 1'-0"

2 Level 2
1/4" = 1'-0"

HARD ROCK CASINO - CENTER BAR

CLIENT
CHEROKEE NATION ENTERTAINMENT

KEY PLAN



No.	Description	Date

SHEET TITLE
LEVEL 1 & LEVEL 2 - REFLECTED CEILING PLAN

100% CONSTRUCTION DOCUMENTS

PROJECT NO. 111-036.19
DRAWN BY:
CHECK BY:
ISSUE DATE: 07/09/19

A4.01
Scale 1/4" = 1'-0"

7/18/2019 2:45:30 PM

