

Cherokee Nation

www.cherokee.org

REQUEST FOR BIDS

2019 or 2020 SUV with Trade-In



Bid Due Date: August 12, 2019

CHEROKEE NATION

P.O. Box 948
Tahlequah, OK 74465
(918) 453-5000

CHEROKEE NATION
BID REQUEST
2019 or 2020 SUV with Trade-In

The Cherokee Nation is accepting bids from interested parties for a 2019 or 2020 SUV for Cherokee Nation Food Distribution in Tahlequah, Oklahoma. Interested parties are to provide a bid to furnish product equal to or better than the specifications provided. Interested bidders must follow all directions outlined in this bid packet including the utilization of mandatory bid response sheet to be considered fully responsive.

The lowest most responsive, responsible bid will be the determining factor in awarding this bid taking Indian Preference in accordance with Cherokee Nation Acquisition Management Policy and Procedures. The successful bidder will be issued a purchase order incorporating the bid response.

Bids are due August 12, 2019 by 5:00 p.m.

MANDATORY SUBMITTAL INFORMATION: Bid submittal requirements must be followed. Each bid must be submitted on the prescribed, required form with all areas completed. Bids may be faxed to the attention of Pam Jumper at (918) 458-4493 or (918) 458-7695 or e-mailed to pam-jumper@cherokee.org. It is the bidder's responsibility to ensure delivery of bid by **August 12, 2019 by 5:00 p.m.** Any bids received after the designated date and time will be ineligible for award.

Bid Acceptance: Bids will be accepted from Indian and Non-Indian bidders. Cherokee Nation reserves the right to reject any and all bids. Cherokee Nation reserves the right to determine if a bid meets stated requirements, and to award a purchase order for the bid that is in the best interest of the Cherokee Nation including but not limited to the total cost and capability of the bidder. Bidders are responsible for any and all costs associated with the preparation and submission of bids. To be considered, bids must be received by the specified date and time; any bid received after stipulated date and time will be returned unopened. No bidder may withdraw their bid within 30 days after proposal due date.

TERO Certification: Indian preference will be given only to bidders who provide proof of current certification from the Cherokee Nation Tribal Employments Office (TERO) located in Tahlequah, Oklahoma, telephone number (918) 453-5000. Proof of TERO certification must accompany and be included in bid submittal.

Conflict of Interest and Restrictions: If any contractor, contractor's employee, subcontractor, or any individual working on the proposed contract may have a possible conflict of interest that may affect the objectivity, analysis, and/or performance of the contract, it shall be declared in writing and submitted to Cherokee Acquisition Management (Attn: Pam Jumper) no later than on or before **August 12, 2019 by 5:00 p.m.** The NATION will determine in writing if the conflict is significant and material and if so, may eliminate the contractor from submitting a proposal.

Verbal Instructions: Interested parties shall not initiate or execute any negotiation, decision, or action arising from any verbal discussion with any Cherokee Nation employee. Only written communications from the designated Contact Person at Cherokee Nation may be considered a duly authorized expression on behalf of the NATION regarding this RFP. Additionally, only written communications from interested parties are recognized as duly authorized expressions on behalf of the vendor. The same instructions shall apply to any subsequent award and agreement communications.

Qualifications of Bidder: The NATION may make such investigations as deemed necessary to determine the ability of the bidder to perform the work, and the bidder shall furnish to the NATION all such information and data for this purpose as the NATION may request. The NATION reserves the right to reject any bid if the evidence submitted by, or investigation of, such bidder fails to satisfy the NATION such bidder is properly qualified to carry out the obligations of the contract and to complete the work contemplated therein. Conditional bids will not be accepted.

Method of Award – Lowest Bid That Contains Lowest Most Responsive/Reasonable Offer From Qualified Bidder: After consideration of price and other factors, the purchase order will be awarded to the bidder whose bid is determined to be the lowest most responsive/reasonable offer taking Indian Preference into consideration and in the best interest of the Nation to accept. Award shall be to the lowest, most responsive/reasonable bid in accordance with Cherokee Nation Acquisition Management Policy and Procedures. Indian/TERO Preference will be given only to bidders who provide proof of current TERO certification from the Cherokee Nation Tribal Employments Office (TERO) in accordance with current Cherokee Nation Policy. Proof of TERO certification must accompany and be included in bid submittal.

Debarment, Suspension, Proposed Debarment, and Other Responsibility Matters: The responding party certifies to the best of its knowledge and belief that the person, the firm, or any of its principals are not presently debarred, suspended, proposed for debarment, or declared ineligible for the award of contracts by any Federal agency or Indian tribe. The bidder will also certify they have not, within a three-year period preceding this Request for Proposal, been convicted of or had a civil judgment rendered against them for: commission of fraud or a criminal offense in connection with obtaining, attempting to obtain, or performing a public (Federal, State, Local or Tribal) contract or subcontract; violation of Federal or State antitrust statutes relating to the submission of offers; or commissions of embezzlement, theft, forgery, bribery, falsifications or destruction of records, making false statements, and are not presently indicted for, or otherwise criminally or civilly charged by a governmental entity with, commission of any of the offenses enumerated in this provision. The responding party certifies they have not, within a three-year period preceding this Request for Proposal, had one or more contracts terminated for default by a Federal, State, Local or Tribal agency. The responding party shall provide immediate written notice to the Cherokee Nation if, at any time prior to contract award, the person learns its certification was erroneous when submitted or has become erroneous by reason of changed circumstances.

General Information: Cherokee Nation reserves the right to waive any informalities or to reject any and all bids. Award of purchase order will be to the lowest most responsible responsive bidder and will be subject to availability of funds. All sums due to any suppliers utilized by successful bidders must be paid or will be paid within ten (10) days of receipt of any money received from the Cherokee Nation under any purchase order. Indian preference will be given to Contractors certified as an Indian-Owned firm by the Cherokee Nation Tribal Employment Rights Office (T.E.R.O.). Proof of certification must accompany all bids. No bidder may withdraw their bid within thirty (30) days after bid opening date.

A prospective contractor seeking to receive Indian Preference under this contract must be certified as an Indian-owned firm by the Cherokee Nation Tribal Employment Rights Office (TERO) and submit proof of that certification with their bid.

MANDATORY BID RESPONSE SHEET
2019 or 2020 SUV with Trade-In

<u>Product Description</u>	<u>QTY</u>	<u>UNIT COST</u>	<u>TOTAL</u>
2019 or 2020 SUV	1	_____	_____

Total Cost New Vehicle: _____

<u>Trade-In</u>	<u>VIN</u>	<u>Allowance</u>
2010 Honda CRV	3CZRE3H35AG705389	_____

LEAD TIME ARO: _____

ALL SPECIFICATIONS ARE FULLY MET: _____ YES _____ NO

PRODUCT SPECIFICATIONS INCLUDED: _____ YES _____ NO

Cherokee Nation will consider bids for product equal to or better. If not bidding exact product, complete details and specifications for product must be submitted with bid.

NOTE TO BIDDERS REGARDING INDIAN PREFERENCE:

TERO Certified Contractor: _____ Yes _____ No
(Proof of certification must accompany all bids)

SUBMITTED:

Company Name

Company Address

Phone/Fax Numbers

Authorized Signature

Print Name & Title

Product Specifications and Requirements
Provided by: Cherokee Nation Food Distribution

The Cherokee Nation Food Distribution is seeking bids on a 2019 or 2020 SUV with trade-in. The desired vehicle information follows, including a vehicle make/model; the Nation will accept a vehicle EQUAL TO OR BETTER THAN SPEC'S PROVIDED.

- Must be an SUV used to haul USDA Foods that must be protected from outside elements and maintained at USDA regulated temperatures during home deliveries. (NO EXCEPTIONS)
- Must be able to seat and accommodate 6 adults to transport to trainings in and out of state.
- Must have steps on the sides to allow employees to safely enter and exit the vehicle.
- 4 wheel drive
- Automatic windows and locks
- Automatic seat controls on both driver and passenger side.
- 18" aluminum wheels with 10 ply tires
- Factory Tint on Windows.

To view the trade-in (CRV) it is located at the Nowata Food Distribution Store at 1018 Lenape Dr. The Point of contact will be Diana Dye the Nowata Warehouse Supervisor and her contact number is (918) 525-2018 or (918) 273-0089. The ideal time for parties interested in viewing the trade-in vehicle would be on Friday's, as they have no home deliveries.

VEHICLE DETAILS ARE LOCATED ON THE FOLLOWING PAGES.

VEHICLE DETAILS
Standard Vehicle Price

Selected Colors

(G9K) Satin Steel Metallic
\$0

(H0U) Jet Black, Premium Cloth seat trim
\$0

Selected Packages (1)

INTERIOR PROTECTION PACKAGE

Highlights Include:

(VAV) Premium all-weather floor mats

(VLI) All-weather cargo mat

Selected Options (7)

(L83) 5.3L EcoTec3 V8 engine
Standard

4/22/2019

(MYC) 6-speed automatic transmission
Standard

(PZX) 18" aluminum wheels with high-polished finish
Standard

(RKX) 18" all-season blackwall tires
\$0

(A95) Premium Cloth front bucket seats
Standard

(IO5) Chevrolet Infotainment System with 8" diagonal color touch-screen
Standard

(SOP) Console insert organizer tray

Total Vehicle and Options

Destination Freight Charge

Total Vehicle Price

Total Cash Allowance[s]

Net Price

Total Included Price Discounts and Cash Allowances;

Standard Features

Mechanical Interior Exterior Safety

Mechanical

- 5.3L EcoTec3 V8 engine
 - 355 hp @ 5600 rpm
 - 383 lb-ft of torque @ 4100 rpm
 - Aluminum block
 - Active Fuel Management™
 - Direct injection
 - Variable Valve Timing
- 6-speed automatic transmission
 - Electronically controlled transmission with overdrive and Driver Shift Control
 - Helps provide smooth, effortless automatic shifting
 - Tap-shift capability allows you to switch gears manually
 - Tow/Haul mode reduces shift cycling for better control and improved cooling when towing or hauling heavy loads
- 3.08 rear axle ratio

4/22/2019

- Premium Smooth Ride suspension
 - Designed to offer passengers a more comfortable ride by isolating the interior cabin from rough pavement
- 7,300 lbs. GVWR
 - When properly equipped; includes weight of vehicle, passengers, cargo and equipment
- Autotrac® 4WD transfer case
 - Single speed 4WD transfer case
 - 3-position rotary knob (2WD, automatic, 4WD)
 - In the automatic position, the system is designed to detect wheel slippage and transfer torque to the front wheels for enhanced traction
 - As conditions warrant, the vehicle will return automatically to 2WD
 - Manually engage 4WD on a full-time basis
- Limited-slip rear differential
 - When the differential senses a significant difference in wheel speed, it locks to turn both rear wheels in unison for added traction
 - Helps your vehicle power through the toughest terrain by keeping the rear wheels moving together
 - Heavy-duty
- 4-wheel drive
- External engine oil cooler
 - Heavy-duty air-to-oil cooler
 - Helps the engine generate peak performance efficiently
 - Helps prevent possible engine oil breakdown during high-performance driving or under loads
- External auxiliary transmission oil cooler
 - Heavy-duty air-to-oil cooler
 - Helps prevent transmission overheating
 - Helps provides optimal transmission performance even when operating under a heavy load or towing a trailer
- Heavy-duty 720 cold-cranking amps battery
 - 80 Amp-hr
 - Maintenance-free with rundown protection and retained accessory power
- 150-amp alternator
- Trailering equipment
 - Trailering hitch platform
 - 2" trailering receiver
- Trailer sway control
 - Helps prevent trailer sway by monitoring driver steering input and then automatically applying the trailer brakes
- Front suspension
 - Coil-over shock with stabilizer bar
- Rear suspension
 - Multi-link with coil springs
- Power steering
- Hill Start Assist
 - When you are stopped on an incline, this feature keeps the brakes engaged for a split second as you transition from brake pedal to gas pedal
 - Automatically releases once you press down on the accelerator

Interior

- Chevrolet Infotainment System with 8" diagonal color touch-screen
 - 8" diagonal color touch-screen for customizing and managing entertainment and vehicle feature settings¹
 - Bluetooth®² streaming audio for music and select phones
 - Apple CarPlay™ capability for compatible phones³
 - Android Auto™ capability for compatible phones⁴
 - Voice-activated technology for radio and phone
 - USB port(s)⁵ to play stored audio files through your vehicle's audio system
 - Auxiliary jack for connecting portable media devices

¹ Functionality varies by model. Full functionality requires compatible Bluetooth and smartphone, and USB connectivity for some devices.

² Go to www.my.chevrolet.com/learn (<http://www.my.chevrolet.com/learn>) vehicle and smartphone compatibility.

³ Vehicle user interface is a product of Apple and its terms and privacy statements apply. Requires compatible iPhone and data plan rates apply. Apple CarPlay is a trademark of Apple Inc. Siri, iPhone and iTunes are trademarks for Apple Inc, registered in the U.S. and other countries.

⁴ Vehicle user interface is a product of Google and its terms and privacy statements apply. Requires the Android Auto app on Google Play and an Android compatible smartphone running Android™ 5.0 Lollipop or higher. Data plan rates apply. Android Auto is a trademark of Google LLC.

⁵ Not compatible with all devices.

- Single-slot CD/MP3 player
 - Offers a choice of media so you can play your favorite music through your vehicle's audio system
- 6-speaker audio system
 - Speakers are positioned throughout the cabin for outstanding sound quality and an enjoyable listening experience
- SiriusXM® Radio trial
 - Welcome to the world of SiriusXM¹
 - Enjoy your 3-month trial subscription to the All Access package with over 150 channels including commercial-free music, plus sports, exclusive talk, entertainment and news
 - Plus, listen on the app and online — it's included with All Access, so you'll hear the best SiriusXM has to offer, anywhere life takes you

¹ If you decide to continue service after your trial, the subscription plan you choose will automatically renew thereafter and you will be charged according to your chosen payment method at then-current rates. Fees and taxes apply. To cancel you must call SiriusXM at 1-866-635-2349. See the SiriusXM Customer Agreement for complete terms at www.siriusxm.com (<http://www.siriusxm.com>). All fees and programming subject to change. ©2019 Sirius XM Radio Inc. Sirius, XM, SiriusXM and all related marks and logos are trademarks of Sirius XM Radio Inc. All rights reserved

- HD Radio
 - Provides consumers with additional channels known as HD2, HD3 and HD4
 - Transmits Program Service Data, such as song titles and artist information
- Bluetooth®
 - Pair your compatible mobile phone to your vehicle's infotainment system¹
 - Place and receive hands-free phone calls
 - Store your phone's contact list in the system to place an outgoing call quickly using the touch-screen display or voice command system
 - With streaming audio capability, you can listen to files stored on your phone or Bluetooth digital media device

¹ Go to my.chevrolet.com/learn (<http://www.my.chevrolet.com/learn>) to find out which phones are compatible with the vehicle.

- 4G LTE Wi-Fi® hotspot capable
 - Terms and limitations apply. See onstar.com (<http://onstar.com>) or dealer for details.
- Chevrolet Connected Access capable
 - Subject to terms. See onstar.com (<http://onstar.com>) or dealer for details.
- Premium Cloth front bucket seats
 - 10-way power driver seat adjuster
 - Passenger seat includes power fore/aft, power recline and power lumbar
- Seat trim, cloth
- 6-way power front passenger seat
 - Position it forward or back, up or down, tilted back or upright
- Manual-folding second row 60/40 split-bench seats
 - Includes a manual release that lets you conveniently fold one or both of the second row seatbacks
 - Provides the flexibility to transport a variety of passenger and cargo combinations
- Manual 60/40 split-folding third row bench seat
 - Can fold one or both sides down
 - Adds cargo- and passenger-carrying versatility to your vehicle
 - Folds flat
- Front center console

- Keep valuables and smaller items secure
- Storage area, cup holders and auxiliary power outlet
- USB ports¹ and auxiliary jack
- ¹ Not compatible with all devices.
- Carpeted floor covering
 - Color-keyed
- Carpeted floor mats
 - Helps protect your interior from road debris and the elements
 - Engineered to fit your vehicle perfectly
 - Removable color-keyed floor mats for first and second rows
- Manual tilt steering column
 - Allows the steering wheel to be manually adjusted up or down
 - Provides extra comfort when entering or exiting the vehicle
- Leather-wrapped steering wheel
 - Equipped with conveniently mounted cruise, audio and Driver Information Center controls
- Steering-wheel mounted controls
 - Allow the driver to easily operate the audio system, phone interface, cruise control and Driver Information Center controls
 - Controls are positioned intuitively to make them convenient and easy to use
- 4.2" diagonal color Driver Information Center
 - Includes driver personalization, warning messages and vehicle information
 - Average vehicle speed and fuel economy
 - Fuel range
 - Trip odometer
 - Tire pressure and oil life
- Warning tones
 - Include headlamp on, key-in-ignition, driver and right-front passenger seat belt unfasten and turn signal on
- Power door locks
 - Programmable
 - Allows you to lock and unlock doors easily whether it's from the driver or front passenger seat or from outside using the key fob
 - Lockout protection helps you avoid locking keys in the vehicle
- Remote Keyless Entry
 - Allows you to lock and unlock doors of the vehicle with the key fob
 - Driver's door or all doors unlock at the touch of a button
 - Includes panic alarm button
- Remote Start
 - Start your vehicle remotely and step into a comfortably warmed or cooled vehicle, depending on the weather and your preset preferences
 - Locks doors and turns on parking lamps while the engine is running
 - Activates the climate control system
 - Helps enable a comfortable interior climate upon immediate entering of the vehicle
- Power windows
 - Driver and front passenger express-up/down
 - Second row express-down
- Cruise control
 - Maintains a selected speed while driving
 - Automatically disengages when the vehicle's traction control system needs to limit wheelspin on slippery surfaces or when the StabiliTrak® stability control system detects an oncoming skid
 - Set and resume speed functions
- Tri-zone automatic climate control
 - Automatically maintains the selected temperatures for the driver, front passenger and rear seat passengers
- Rear window defogger
 - Helps to keep your rear view clear of fog or frost

- Utilizes a warming grid to help remove fog or frost from the rear window
- 110-volt power outlet
 - Can be used to plug in electrical equipment, such as a cell phone or a portable device
 - When not in use, the outlet's protective cover snaps into place
- 12-volt power outlets
 - Located in the instrument panel
 - 2 in the console
 - 1 in 3rd row and 1 in cargo area
 - When bench seat is ordered, the outlet on the back of the console is removed
- Mirror, inside rearview manual day/night
- Conversation mirror
 - Located in the overhead console
 - Provides a panoramic view of the rear seats
 - Allows the driver to view rear seat passengers without having to turn around
 - Includes storage for small items like sunglasses
- Assist handles
 - First row passenger and second row outboard seats
- Interior lighting
 - Driver- and passenger-side door switch with delayed entry feature
 - Dome light
 - Map lights in front and second row seat positions
 - Cargo lights, door handle or Remote Keyless Entry-activated illuminated entry
- Cargo Management System
 - Organizes the items in the rear cargo hold to help keep it neat
 - Allows you to secure cargo to help prevent items from shifting while you're driving
 - Includes movable dividers that adjust the size of the storage areas
- Cargo net
 - Helps secure and organize smaller items in your cargo area
 - Easy to remove and store when not needed
 - Black envelope-style cargo net

Exterior

- 18" aluminum wheels with high-polished finish
 - Paired with all-season blackwall tires
- 18" all-season blackwall tires
 - P265/65R18
- 17" all-season blackwall spare tire
 - P265/70R17
- 17" full-size spare steel wheel
- Spare tire carrier lock
 - Helps keep spare tire secure
 - Utilizes the same key as the door and ignition
- Active aero shutters
 - Shutters close at high speeds to help enhance aerodynamics
 - Shutters reopen at lower speeds or when needed to help cool the engine compartment
- Fascia, front body-color
- Fascia, rear body-color
- Black roof-mounted side rails
 - Enhances the appearance of your vehicle
 - Allows you to secure cargo directly to the top of your vehicle
 - Removable for easy on and easy off
 - Premier includes bright accent
- Black assist steps
 - Textured step pads help provide secure footing
 - Extend from wheel well to wheel well
 - Premier includes chrome accent strip
- Heated power outside mirrors

- Both mirrors are heated and are activated when the rear defogger is engaged, helping to clear them of ice, snow and frost to help improve visibility
- Power adjustments allow you to move both side mirrors with the touch of a button
- Manual-folding feature lets you fold the mirrors in
- Driver mirror includes spotter mirror
- Acoustic laminated glass
 - Helps keep out traffic and road noises
 - Dampens sounds from the outside to help give you a quiet ride
- Deep-tinted glass
 - Provides added protection from sun and glare
 - Tint on rear side windows and rear liftgate window
- Rainsense¹ automatic wipers
 - Turn on automatically when sensors detect varying degrees of precipitation on the windshield
 - The intermittent feature adjusts the speed of the wipers to help keep the windshield clear in a variety of conditions
- Rear intermittent wiper
 - Variable-speed
 - Washer to help keep rear window clear
 - When not in use, the wiper is concealed by the rear spoiler for a seamless appearance
- Manual liftgate
 - Access your cargo area with ease
 - Fixed glass rear window on the liftgate

Safety

- 4-wheel antilock disc brakes
 - Help reduce wheel lockup and maintain steering control during hard braking on most slippery surfaces
- StabilityTrak, electronic stability control system with traction control
 - Automatically helps enhance control, particularly during emergency maneuvers, by adjusting the brakes and engine torque to help you stay on your intended path
 - Activates when vehicle sensors detect a difference between the driver's intended path and the direction the vehicle is actually travelling
 - Includes Traction Control that detects wheel slippage and applies brake pressure and/or reduces engine power to help the driver maintain control when accelerating on wet or snow-covered roads
 - Includes Brake Assist that senses how hard and fast a driver hits the brake pedal and gives extra braking assistance, if required
- Daytime Running Lamps
 - Includes automatic exterior lamp control
- Teen Driver
 - This configurable feature lets you activate customizable vehicle settings associated with a key fob to help encourage better driving behavior¹
 - It can limit certain vehicle features, and automatically turns on certain safety systems if vehicle is equipped¹
 - An in-vehicle report card gives you information on driving habits and helps you to continue to coach your new driver¹

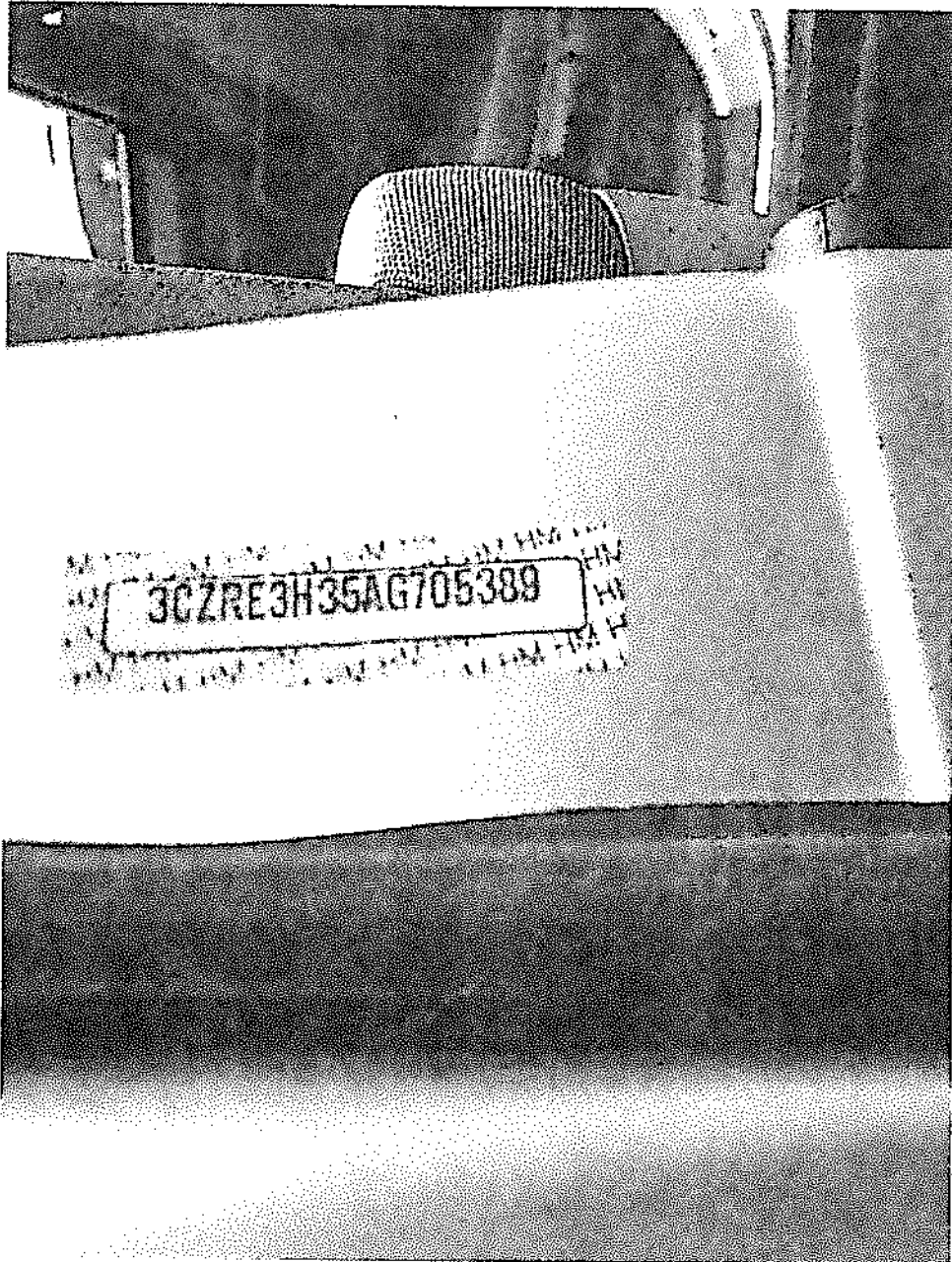
¹ Safety or driver assistance features are no substitute for the driver's responsibility to operate the vehicle in a safe manner. The driver should remain attentive to traffic, surroundings and road conditions at all times. Visibility, weather, and road conditions may affect feature performance. Read the vehicle's owner's manual for more important feature limitations and information.

- 7 Airbags (requires bucket seats)
 - Frontal airbags for driver and front outboard passenger¹
 - Seat-mounted side-impact airbags for driver and front outboard passenger¹
 - Driver inboard seat-mounted side-impact airbag¹ (requires bucket seats)
 - Head-curtain airbags for front and rear outboard seating positions¹

¹ Always use seat belts and child restraints. Children are safer when properly secured in a rear seat in the appropriate child restraint. See the Owner's Manual for more information.

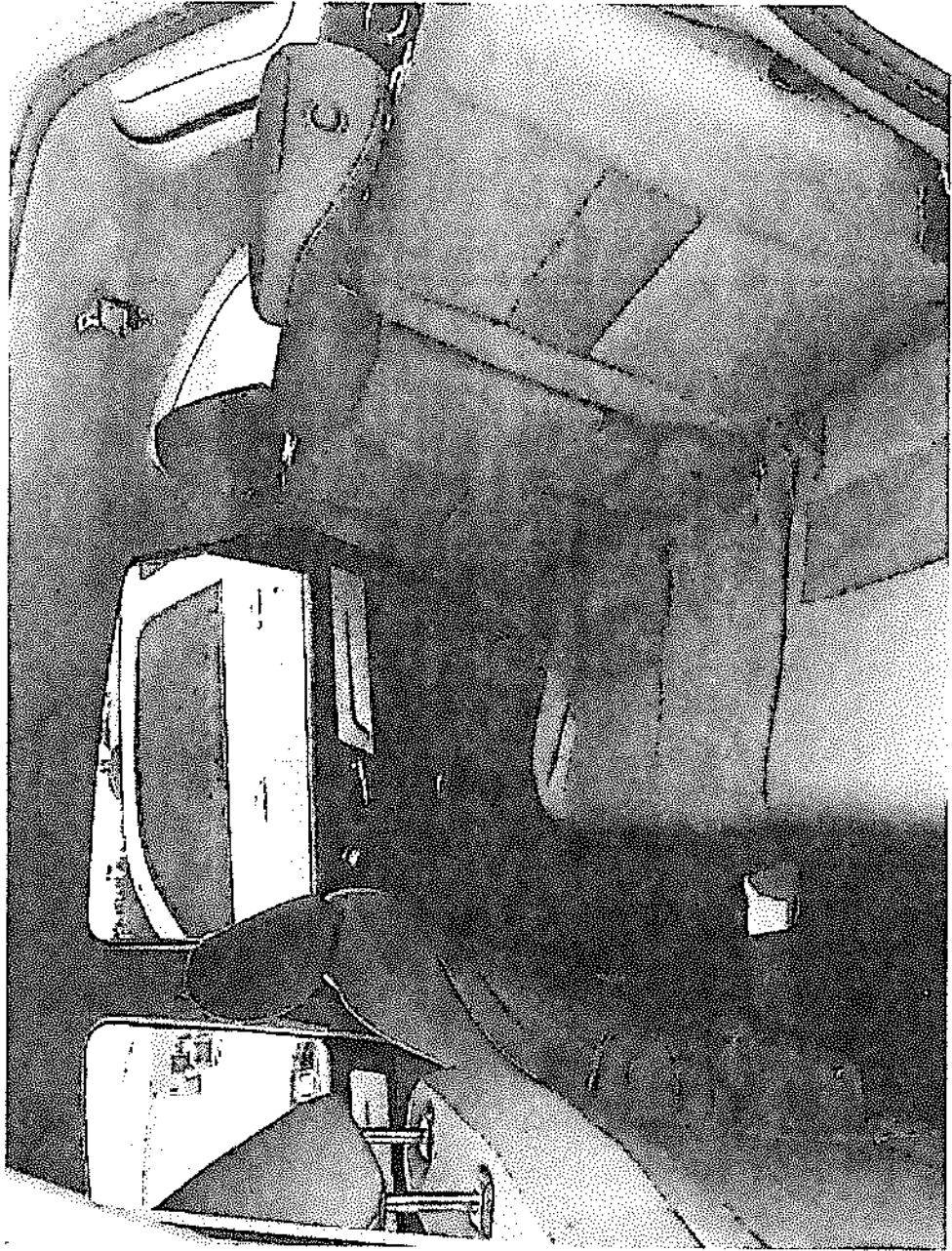
- Front outboard Passenger Sensing System for frontal outboard passenger airbag¹

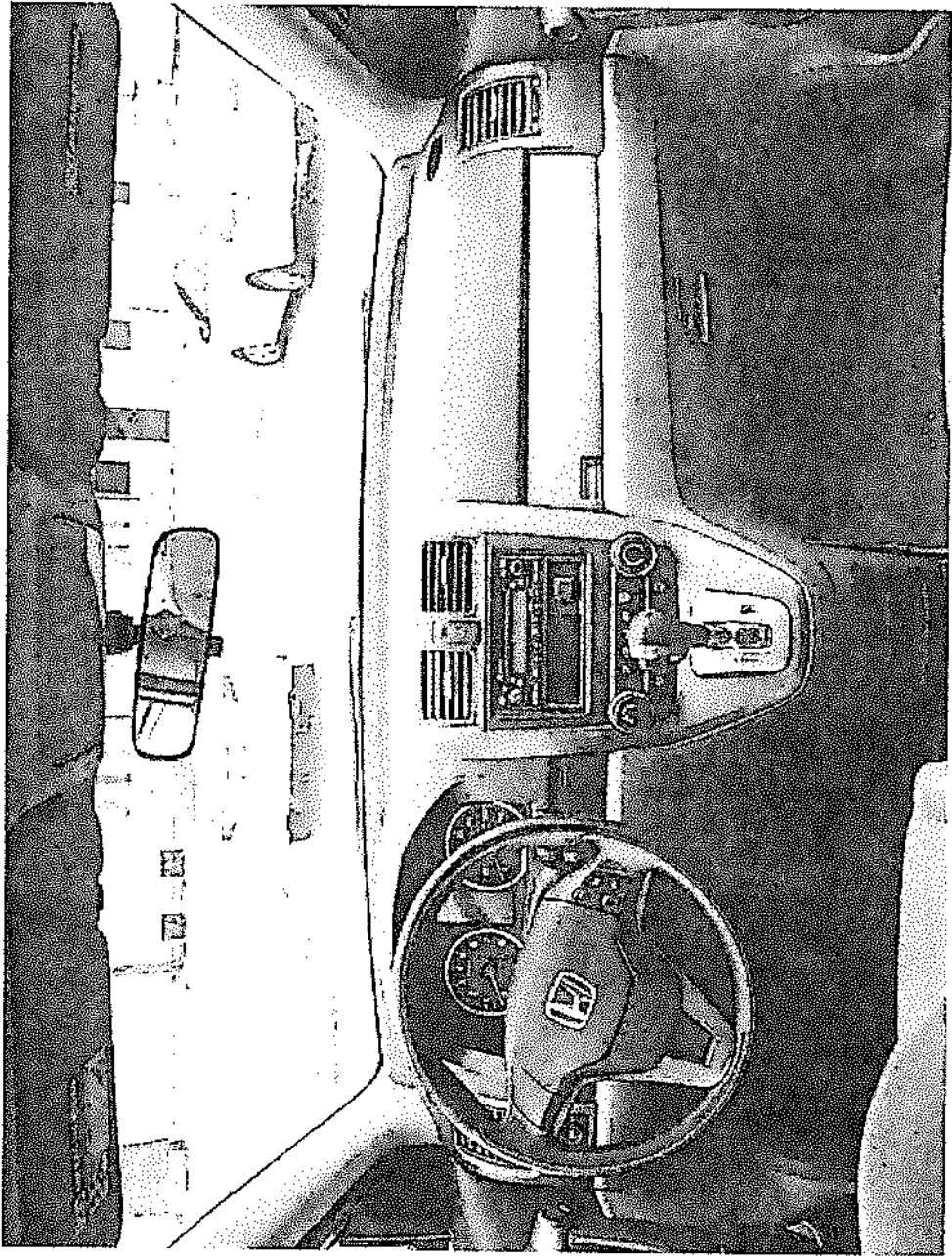
- Rear child security door locks
 - When activated, prevents passengers from opening the rear doors from inside the vehicle
 - Allow rear doors to open from outside of the vehicle only
- OnStar® & Chevrolet Connected Services capable
 - Terms and limitations apply. See [onstar.com \(http://onstar.com\)](http://onstar.com) or dealer for details.
- Rear Park Assist
 - When driving in Reverse below 5 mph (8 km/h), provides distance-to-object alerts to help the driver park¹
 - Also helps the driver avoid nearby detected objects directly behind the vehicle during low-speed maneuvering
- ¹ Safety or driver assistance features are no substitute for the driver's responsibility to operate the vehicle in a safe manner. The driver should remain attentive to traffic, surroundings and road conditions at all times. Visibility, weather, and road conditions may affect feature performance. Read the vehicle's owner's manual for more important feature limitations and information.
- Rear Vision Camera
 - When in Reverse, provides the driver of a view of the scene directly behind the vehicle on the Infotainment screen to help the driver park and avoid nearby objects during low-speed maneuvering¹
- ¹ Safety or driver assistance features are no substitute for the driver's responsibility to operate the vehicle in a safe manner. The driver should remain attentive to traffic, surroundings and road conditions at all times. Visibility, weather, and road conditions may affect feature performance. Read the vehicle's owner's manual for more important feature limitations and information.
- LATCH System
 - Lower Anchors and Tethers for CHildren system helps make it easy to install and secure a compatible child restraint seat
- Tire Pressure Monitoring System
 - Monitors the pressure in each tire and alerts you if there is a low-pressure condition in one or more of the tires¹
 - Properly inflate tires to help optimize your vehicle's ride, handling and efficiency
- ¹ Does not monitor spare tire.
- Electrical theft-deterrent system
 - Helps deter unauthorized entry, helping to protect your vehicle and its contents
 - Immobilizes the engine to help prevent theft
 - Sounds the horn and flashes the turn signals when someone attempts to open the vehicle without the proper key or remote transmitter
- **MSRP less cash offers. Tax, title, license and dealer fees extra. Take new retail delivery by 04/30/2019. Residency restrictions apply. Not available with some other offers. See dealer for details.**
- **MSRP excluding installation, taxes and wheel components (if applicable). Dealer prices may vary. Some accessories may require purchase of additional equipment and/or services. See dealer for details.**
- **MSRP excludes tax, title, license, dealer fees and optional equipment. See dealer for details.**



3CZRE3H35AG705389







02/10

INFO. BY HONDA DE MEXICO S.A. DE C.V.

GVWR 2070KG(4560LBS) TIRE SIZE RIM SIZE

GVWR F 1050KG(2310LBS) 225/55R17 102T 17X5.5J

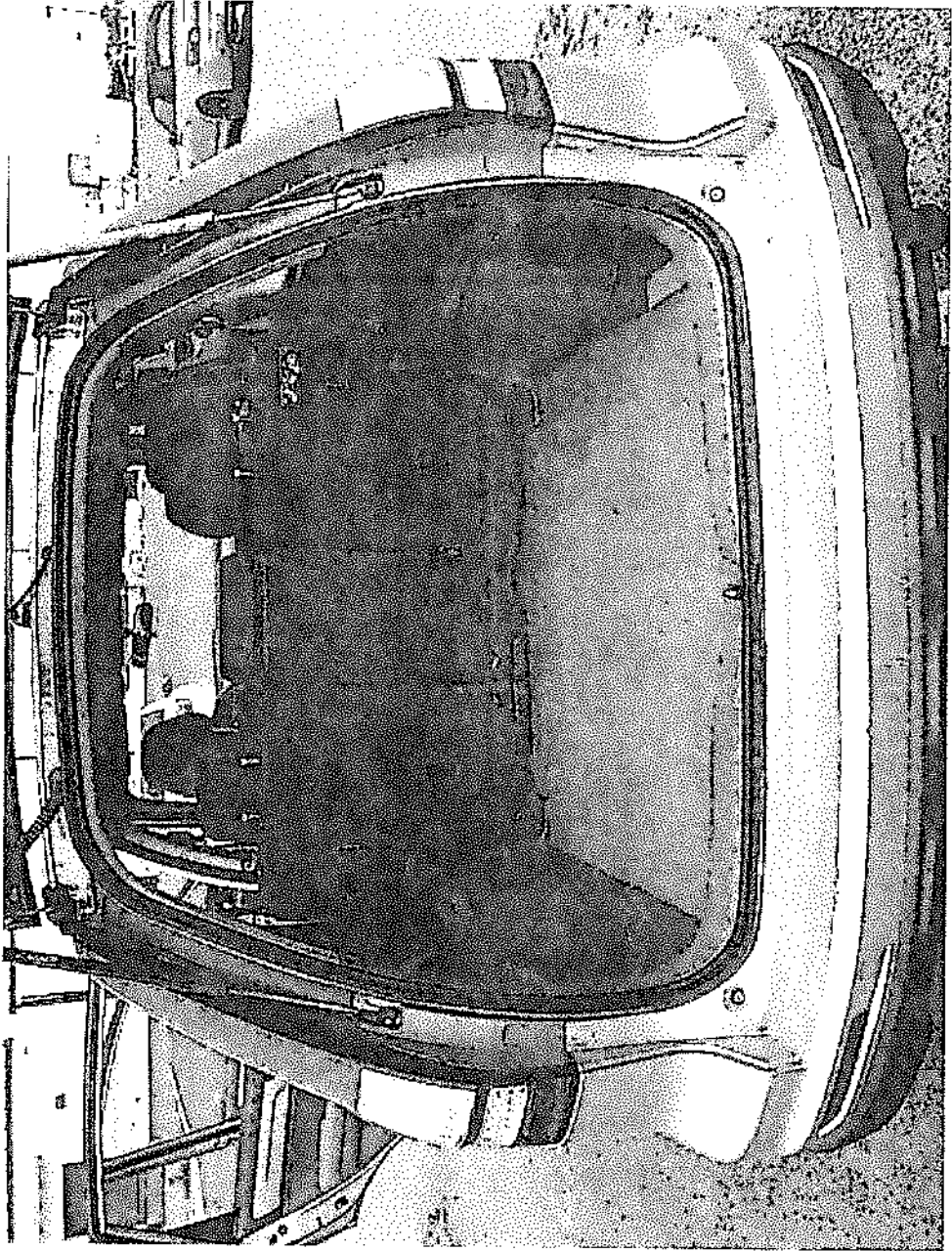
GVWR R 1040KG(2290LBS) 225/55R17 102T 17X5.5J

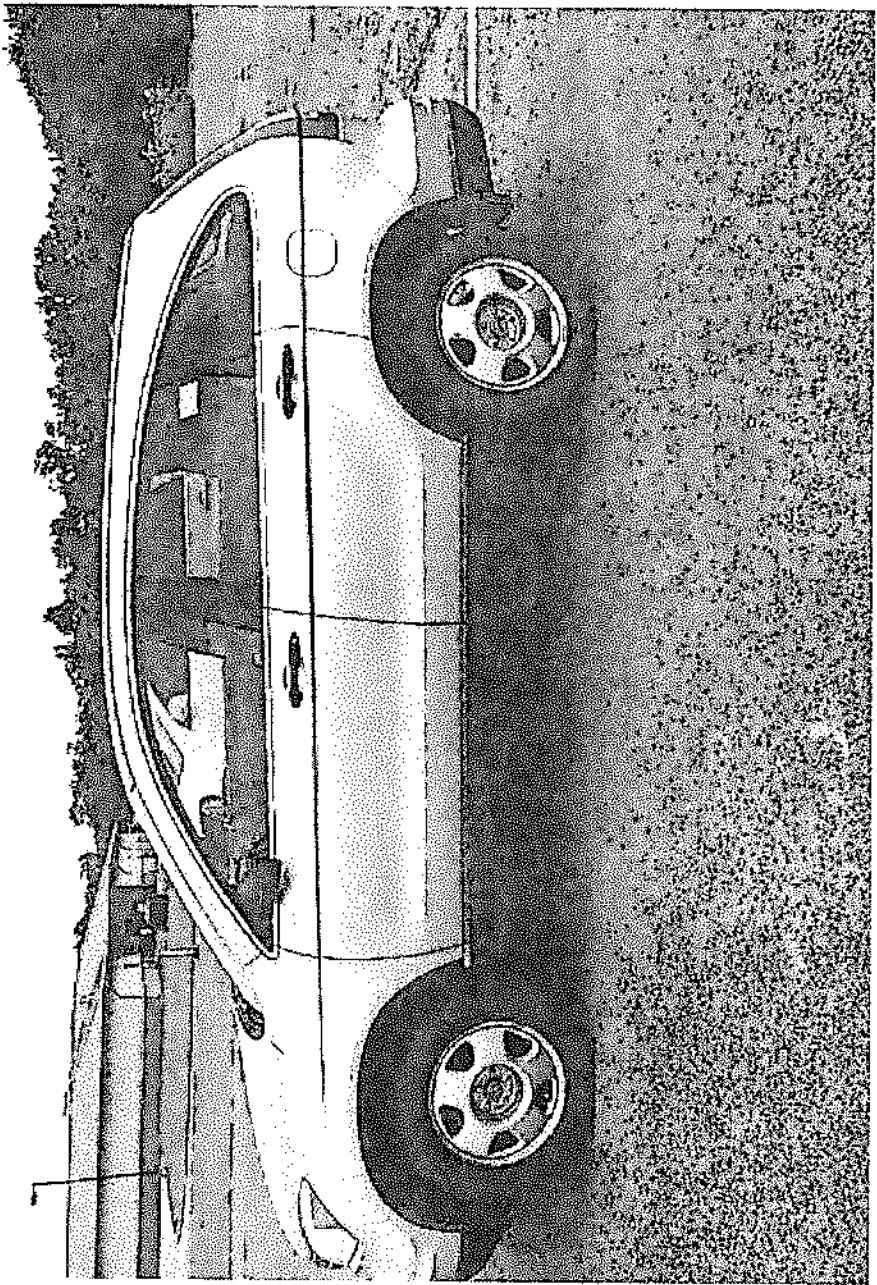
THIS VEHICLE CONFORMS TO ALL APPLICABLE FEDERAL MOTOR VEHICLE SAFETY AND THEFT PREVENTION

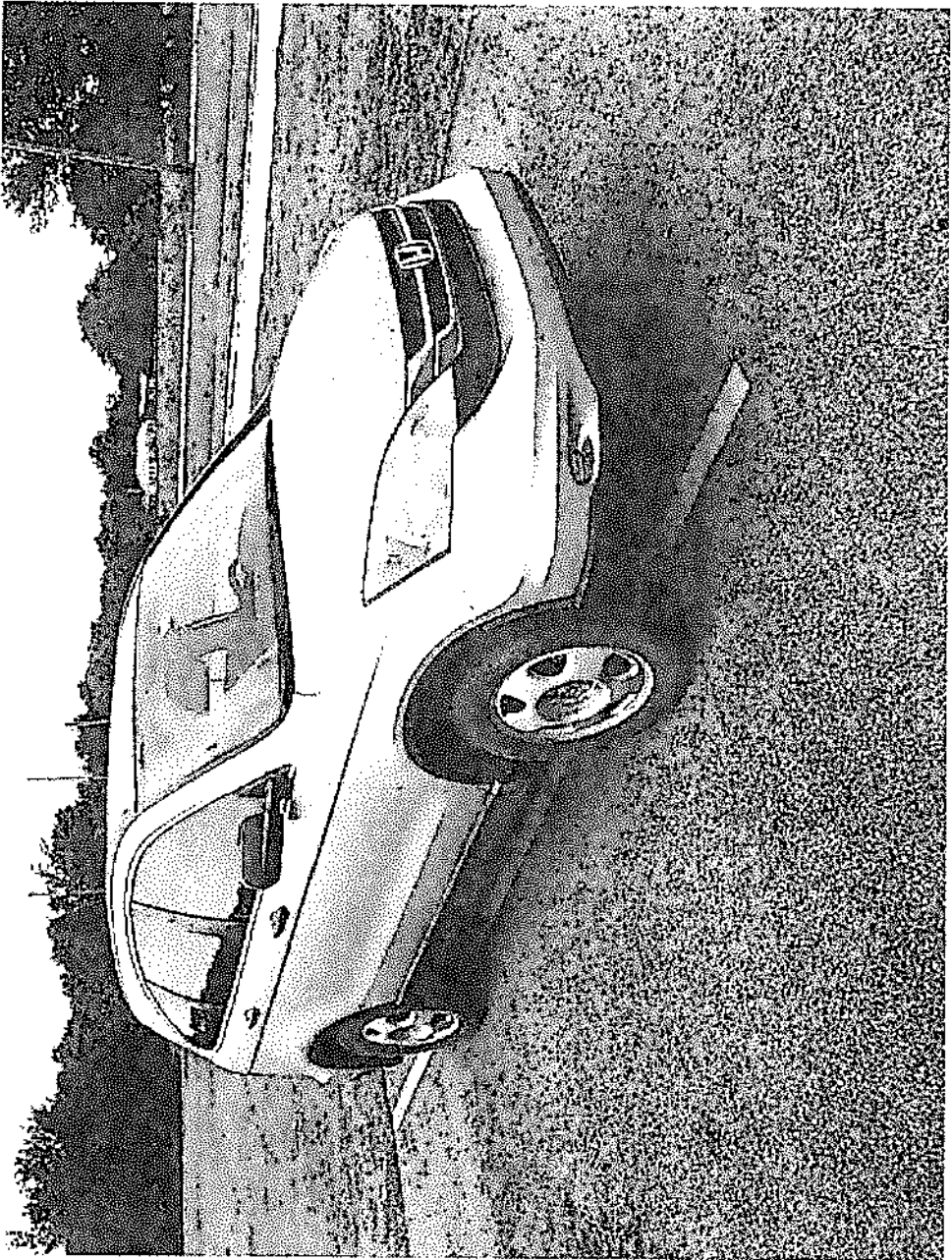
STANDARDS IN EFFECT ON THE DATE OF MANUFACTURE

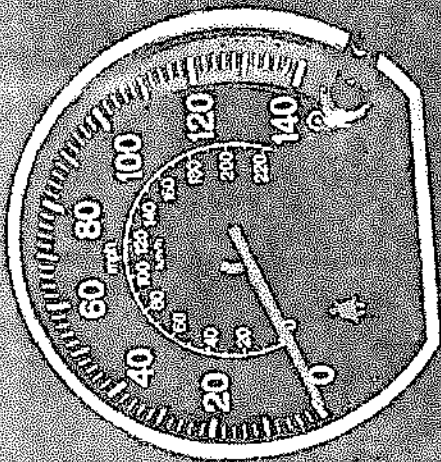
SHOWN ABOVE. V.I.N.: 3CZAE3H56G763033 TYPE:MPV

8VF A4A5 - NH700MX - S - G MADE IN MEXICO









1000

04158

45865



1000

