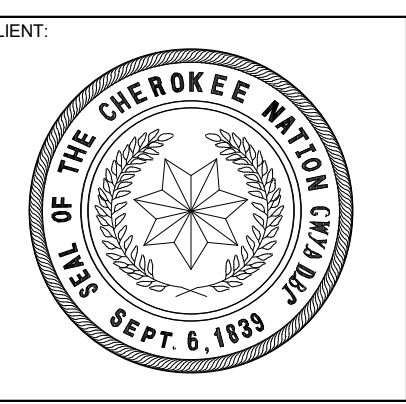
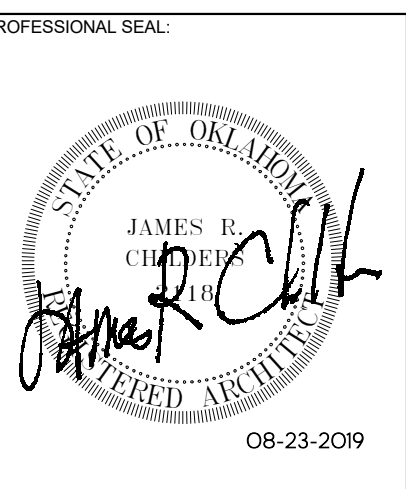


James R. Childers
Architect, Inc.
45 South 4th Street
Fort Smith, AR 72901
479-783-2450
www.childersarchitect.com



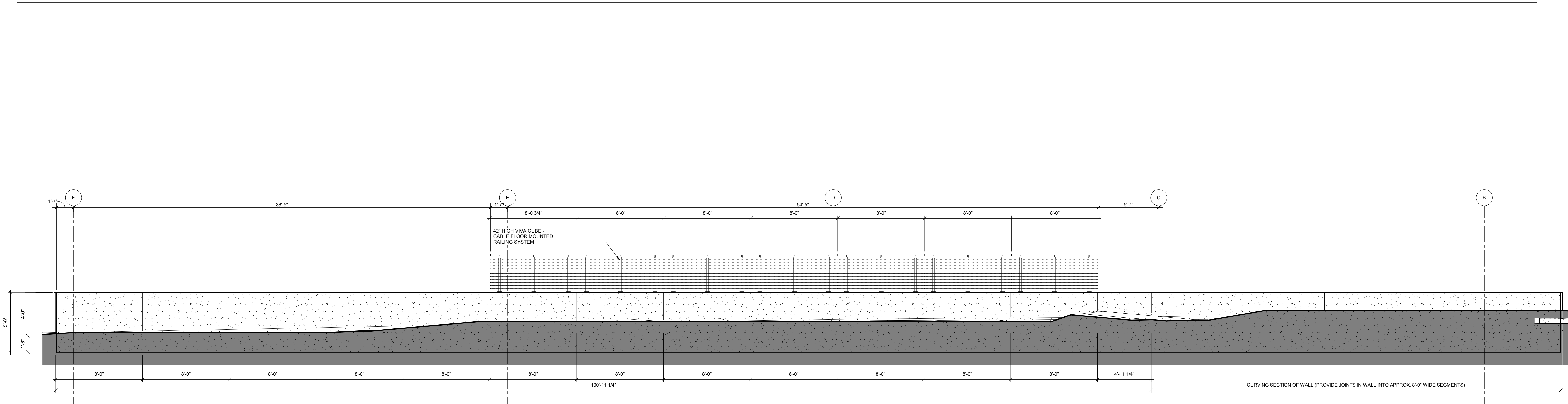
COLLEGE OF
Osteopathic Medicine
AT THE CHEROKEE NATION
TAHLEQUAH, OKLAHOMA

KEY PLAN:

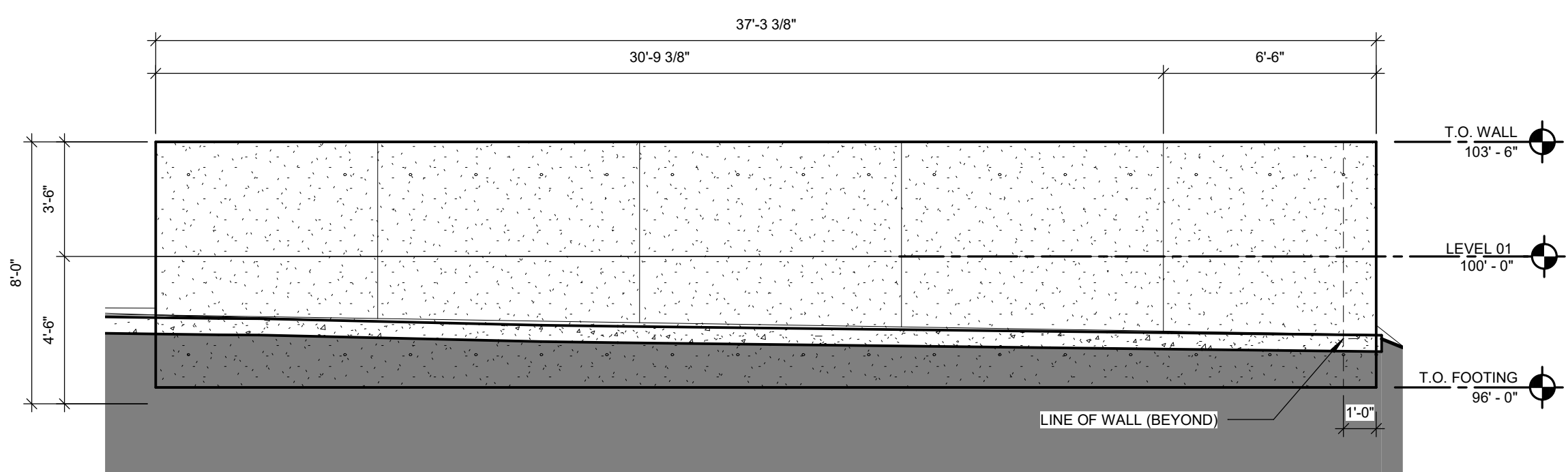
PROJECT PHASE:
95% CONSTRUCTION DOCUMENTS

#	DATE	REVISION DESCRIPTION

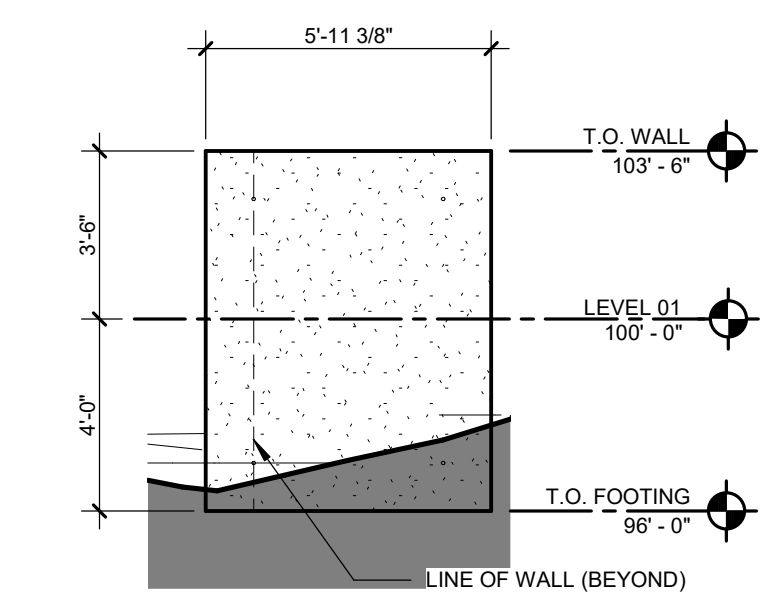
DATE: 07-15-19	JOB NUMBER: 17-13
SHEET NUMBER: AS.01	
SITE PLAN / DETAILS	



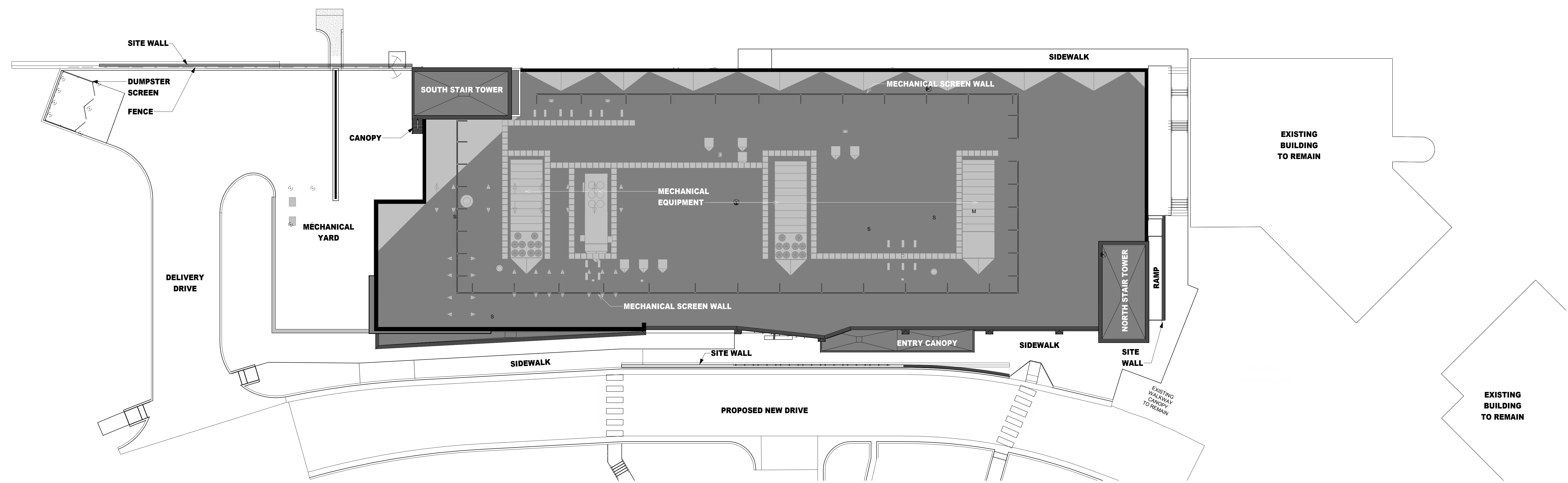
04 ELEVATION - CONCRETE WALL
1/4" = 1'-0"



03 ELEVATION - CONCRETE WALL
1/4" = 1'-0"



02 ELEVATION - CONCRETE WALL
1/4" = 1'-0"



01 SITE PLAN
1/16" = 1'-0"

