



Construction Manager's Clarification

Date: September 17, 2019

RE: CM Clarification #2 – 100% Set

Project: OSU College of Osteopathic Medicine at the Cherokee Nation

This clarification forms a part of the contract documents and modifies the original Construction Manager's Bid Book. Acknowledge receipt of this clarification in the space provided on the Form of Proposal. Failure to do so may subject bidder to disqualification.

The following clarifications are to be included in the scope of work affected:

Item #1 Reference attached Document 003113 – Preliminary Bid Schedule to be used for bidding purposes.

- a. Notice to all bidders, clarification of phasing as out lined below. Material and resources will need to be planned to work around an operational building during phase 2.
 - i. i. Phase 1: Complete construction of levels one and two, Interior core of levels three and four of the facility. The MEP Systems must be complete and operational. Exterior shell shall be complete. The substantial completion date for Phase I of the Project is June 1, 2020 ("Phase I Substantial Completion Date").
 - ii. ii. Phase 2: Complete construction of levels three and four of the facility. The substantial completion date for Phase II of the Project shall be November 1, 2020 ("Phase II Substantial Completion Date").

Item #2 REVISED Bid Package 6A – Millwork – Revised OFCI/CFCI items. Reference latest equipment schedule.

Item #3 REVISED Bid Package 26A – Electrical – Updated package to include division 27.

Cooper Flintco, LLC
1624 W. 21st Street
Tulsa, OK 74107
(918) 587-8451

Cherokee Nation / OSU CHS - CPM Schedule 1909xx		Classic Schedule Layout			17-Sep-19 15:49												
Activity ID	Activity Name	Original Duration	Start	Finish	O	N	D	J	F	M	A	M	J	J	A	S	
Cherokee Nation / OSU CHS - CPM Schedule 1909xx		507	01-Jan-19 A	30-Oct-20													
Project Milestones		421	11-Mar-19 A	30-Oct-20													
M-1100	Cooper Flintco Contract NTP Complete	0		11-Mar-19 A	NTP Complete												
M-1110	Steel Structure Complete	0		11-Dec-19	Steel Structure Complete												
M-1130	Temporary Air	0		07-Jan-20	Temporary Air												
M-1140	Permenent Power	0		07-Feb-20	Permenent Power												
M-1120	Building Dry in	0		12-Feb-20	Building Dry in												
M-1150	Permenent Air On	0		17-Mar-20	Permenent Air On												
M-1160	Sitework complete	0		25-May-20	Sitework com												
M-1180	Phase 1 - Basement & Lvl 1 Substantial Completion	0		01-Jun-20*	Phase 1 - Ba												
M-1170	Exterior Envelope Complete	0		19-Jun-20	Exterior Er												
M-1190	Phase 2 - Level 2 & 3 Substantial Completion	0		30-Oct-20*													
Design		171	01-Jan-19 A	17-Sep-19	17-Sep-19, Design												
D-1060	100% Drawings Complete	170	01-Jan-19 A	17-Sep-19	100% Drawings Complete												
D-1010	Prepare SD Estimate	25	22-Feb-19 A	19-Mar-19 A													
D-1020	Foundation and Excavation Bid set Complete	20	01-Mar-19 A	20-Mar-19 A	vation Bid set Complete												
D-1000	Bulk steel Bid Set Complete	15	01-Mar-19 A	15-Mar-19 A	plete												
D-1040	Site Utilities and Grading	15	20-Mar-19 A	10-May-19 A	Grading												
D-1050	Under Slab MEP Bid Set Complete	15	20-Mar-19 A	10-May-19 A	P Bid Set Complete												
D-1030	Basement Waterproofing Info from ASI#1-BP3	10	16-Apr-19 A	22-Apr-19 A	proofing Info from ASI#1-BP3												
D-1070	Exterior Framing Package	45	02-May-19 A	26-Jul-19 A	or Framing Package												
Bidding & Contracting		140	04-Mar-19 A	08-Oct-19	08-Oct-19, Bidding & Contracting												
BP 01 - Demolition & Waterline By Owner		40	04-Mar-19 A	19-Jun-19 A	A, BP 01 - Demolition & Waterline By Owner												
BP1-1000	Demolition and Waterline buy out by owner	40	04-Mar-19 A	19-Jun-19 A	and Waterline buy out by owner												
BP 02 - Bulk Steel		11	15-Mar-19 A	09-Apr-19 A	Bulk Steel												
BP2-1000	BP 02 - Receive Bid Documents	0	15-Mar-19 A		documents												
BP2-1010	BP 02 - Prepare Scope of Work and Documents	1	15-Mar-19 A	18-Mar-19 A	e of Work and Documents												
BP2-1020	BP 02 - Bid Period	10	18-Mar-19 A	29-Mar-19 A													
BP2-1030	BP 02 - Descope and Award	5	01-Apr-19 A	08-Apr-19 A	d Award												
BP2-1040	BP 02 - NTP with Bid Package	1	08-Apr-19 A	09-Apr-19 A	d Package												
BP 03 - Foundations and Pad Excavation		16	20-Mar-19 A	15-Apr-19 A	- Foundations and Pad Excavation												
BP3-1000	BP 03 - Receive Bid Documents	0	20-Mar-19 A		documents												
BP3-1010	BP 03 - Prepare Scope of Work and Documents	1	20-Mar-19 A	22-Mar-19 A	e of Work and Documents												

Primary Baseline

Actual Work

Remaining Work

Critical Remaining ...

Page 1 of 13

TASK filter: All Activities

© Oracle Corporation

Cherokee Nation / OSU CHS - CPM Schedule 1909xx		Classic Schedule Layout				17-Sep-19 15:49													
Activity ID	Activity Name	Original Duration	Start	Finish		O	N	D	J	F	M	A	M	J	J	A	S		
	BP3-1020	BP 03 - Bid Period	10	22-Mar-19 A	02-Apr-19 A														
	BP3-1030	BP 03 - Descope and Award	5	02-Apr-19 A	15-Apr-19 A														
	BP3-1040	BP 03 - NTP with Bid Package	1	15-Apr-19 A	15-Apr-19 A														
	BP 04 - Water Proofing		54	23-Apr-19 A	11-Jun-19 A														
	BPxx1000	BP x - Receive Bid Documents	0	23-Apr-19 A															
	BPxx1010	BP x - Prepare Scope of Work and Documents	15	10-May-19 A	15-May-19 A														
	BPxx1020	BP x - Bid Period	10	16-May-19 A	29-May-19 A														
	BPxx1030	BP x - Descope and Award	5	29-May-19 A	10-Jun-19 A														
	BPxx1040	BP x - NTP with Bid Package	1	11-Jun-19 A	11-Jun-19 A														
	BP 04 - Under Slab MEP		43	10-May-19 A	10-Jun-19 A														
	BP04-1000	BP 04 - Receive Bid Documents	0	10-May-19 A															
	BP04-1010	BP 04 - Prepare Scope of Work and Documents	1	13-May-19 A	15-May-19 A														
	BP04-1020	BP 04 - Bid Period	10	16-May-19 A	29-May-19 A														
	BP04-1030	BP 04 - Descope and Award	5	29-May-19 A	07-Jun-19 A														
	BP04-1040	BP 04 - NTP with Bid Package	1	10-Jun-19 A	10-Jun-19 A														
	BP 05 - Exterior Framing		56	26-Jul-19 A	23-Sep-19														
	BP05-1100	BP - Receive Bid Documents	0	26-Jul-19 A															
	BP05-1110	BP - Prepare Scope of Work and Documents	1	29-Jul-19 A	29-Jul-19 A														
	BP05-1120	BP - Bid Period	11	01-Aug-19 A	15-Aug-19 A														
	BP05-1130	BP - Descope and Award	5	16-Aug-19 A	23-Aug-19 A														
	BP05-1140	BP - NTP with 7C	1	10-Sep-19 A	10-Sep-19 A														
	BP 05a - Rebid per owner		56	22-Aug-19 A	23-Sep-19														
	5a-1010	BP - Prepare Scope of Work and Documents	0	22-Aug-19 A	26-Aug-19 A														
	5a-1000	BP - Receive Bid Documents	0	23-Aug-19 A															
	5a-1020	BP - Bid Period	11	26-Aug-19 A	10-Sep-19 A														
	5a-1030	BP - Descope and Award	5	11-Sep-19 A	16-Sep-19 A														
	A2250	BP 8E - Glazing notice NTP	5	12-Sep-19 A	23-Sep-19														
	5a-1040	BP 9a Framing - NTP	5	16-Sep-19 A	17-Sep-19 A														
	A2260	BP 7A - Roofing NTP	5	17-Sep-19	23-Sep-19														
	A2270	BP 7F - EIFS NTP	5	17-Sep-19	23-Sep-19														
	A2280	BP 10F - NTP	5	17-Sep-19	23-Sep-19														
	A2290	BP 10K, 4A, and 7D NTP	5	17-Sep-19	23-Sep-19														
	BP 06 - Architectural and MEP bids		28	23-Aug-19 A	08-Oct-19														
	BP06-1100	BP 05 - Receive Bid Documents	0	23-Aug-19 A															

Primary Baseline

Actual Work

Remaining Work

Critical Remaining ...

Page 2 of 13

TASK filter: All Activities

© Oracle Corporation

Cherokee Nation / OSU CHS - CPM Schedule 1909xx		Classic Schedule Layout				17-Sep-19 15:49																
Activity ID	Activity Name	Original Duration	Start	Finish		O	N	D	J	F	M	A	M	J	J	A	S					
	BP06-1110	BP 05 - Prepare Scope of Work and Documents	5	29-Aug-19 A	03-Sep-19 A	BP 05 - Prepare Scope of Work and Documents																
	BP06-1120	BP 05 - Bid Period	15	03-Sep-19 A	24-Sep-19	BP 05 - Bid Period																
	BP06-1130	BP 05 - Descope and Award	5	25-Sep-19	01-Oct-19	BP 05 - Descope and Award																
	BP06-1140	BP 05 - NTP with Bid Package	5	02-Oct-19	08-Oct-19	BP 05 - NTP with Bid Package																
Submittals and Material Procurement			236	09-Apr-19 A	16-Mar-20	16-Mar-20, Submittals &																
Procure and Review Submittals			157	09-Apr-19 A	19-Nov-19	19-Nov-19, Procure and Review Submi																
	SP1000	Procure Steel Anchor bolts and Embeds	10	09-Apr-19 A	14-May-19 A	Anchor bolts and Embeds																
	SP1010	Procure Steel Sequence 1-3 shops B,LVL1&2	20	09-Apr-19 A	27-May-19 A	Sequence 1-3 shops B,LVL1&2																
	SP1020	Procure Steel Sequence 4&5 Shops LVL1&2	25	09-Apr-19 A	03-Jun-19 A	Steel Sequence 4&5 Shops LVL1&2																
	SP1030	Procure Steel Sequence 6-10 Shops LVL 3	35	10-Apr-19 A	24-Jun-19 A	Steel Sequence 6-10 Shops LVL 3																
	SP1040	Procure Steel Sequence 11-15 Shops ROOF	25	10-Apr-19 A	24-Jun-19 A	Steel Sequence 11-15 Shops ROOF																
	SP1050	Procure Steel Sequence 16 Screenwall shops	30	10-Apr-19 A	23-Jul-19 A	Steel Sequence 16 Screenwall shops																
	SP1060	Procure Steel Sequence 17 canopy steel shops	30	10-Apr-19 A	23-Jul-19 A	Steel Sequence 17 canopy steel shops																
	SP1070	Procure Rebar and Concrete Submittals	10	01-May-19 A	15-May-19 A	Rebar and Concrete Submittals																
	SP1080	Procure Stair Shop drawings	30	14-May-19 A	05-Aug-19 A	Stair Shop drawings																
	SP1100	Procure Site utility Submittals	5	10-Jun-19 A	17-Jun-19 A	Site utility Submittals																
	SP1120	Procure Lift Station submittals	20	11-Jun-19 A	08-Jul-19 A	Lift Station submittals																
	SP1090	Procure Foundation Waterproofing Submittals	5	21-Jun-19 A	01-Jul-19 A	Foundation Waterproofing Submittals																
	SP1280	Procure Elevator Submittals	15	21-Jun-19 A	27-Jun-19 A	Procure Elevator Submittals																
	SP1160	Procure Metal Panel Submittals	30	12-Sep-19 A	28-Oct-19	Procure Metal Panel Submittals																
	SP1130	Procure Misc Steel Shop Drawings	40	17-Sep-19	11-Nov-19	Procure Misc Steel Shop Drawings																
	SP1110	Procure Framing submittals	15	17-Sep-19	07-Oct-19	Procure Framing submittals																
	SP1150	Procure CurtainWall Submittals	30	24-Sep-19	04-Nov-19	Procure CurtainWall Submittals																
	SP1270	Procure Roofing Submittals	7	24-Sep-19	02-Oct-19	Procure Roofing Submittals																
	A2300	Procure EIFS Submittals	15	24-Sep-19	14-Oct-19	Procure EIFS Submittals																
	A2310	Procure wall protection submittals	20	24-Sep-19	21-Oct-19	Procure wall protection submittals																
	A2320	Procure metal canopy submittals	20	24-Sep-19	21-Oct-19	Procure metal canopy submittals																
	A2330	Procure Fireproofing submittals	10	24-Sep-19	07-Oct-19	Procure Fireproofing submittals																
	SP1140	Procure Masonry Submittals	10	09-Oct-19	22-Oct-19	Procure Masonry Submittals																
	SP1170	Procure Wood Panel Submittals	25	09-Oct-19	12-Nov-19	Procure Wood Panel Submittals																
	SP1180	Procure Mechanical EQ Submittals	15	09-Oct-19	29-Oct-19	Procure Mechanical EQ Submittals																
	SP1190	Procure Plumbing Fixture/EQ Submittals	10	09-Oct-19	22-Oct-19	Procure Plumbing Fixture/EQ Submittals																
	SP1200	Procure Lighting Submittals	10	09-Oct-19	22-Oct-19	Procure Lighting Submittals																

Primary Baseline

Remaining Work

Actual Work

Critical Remaining ...

Page 3 of 13

TASK filter: All Activities

© Oracle Corporation

Cherokee Nation / OSU CHS - CPM Schedule 1909xx		Classic Schedule Layout				17-Sep-19 15:49													
Activity ID	Activity Name	Original Duration	Start	Finish		O	N	D	J	F	M	A	M	J	J	A	S		
	SP1210	Procure Electrical Gear Submittals	15	09-Oct-19	29-Oct-19														
	SP1220	Procure Floor Covering Submittals	10	09-Oct-19	22-Oct-19														
	SP1230	Procure Owner Submittals	25	09-Oct-19	12-Nov-19														
	SP1240	Procure millwork Submittals	30	09-Oct-19	19-Nov-19														
	SP1250	Procure Lab casework submittals	15	09-Oct-19	29-Oct-19														
	SP1260	Procure Fire Protection Submittals	18	09-Oct-19	01-Nov-19														
	SP1281	Procure Ductwork Shops	15	09-Oct-19	29-Oct-19														
	A2460	Procure Head Wal Submittals	30	09-Oct-19	19-Nov-19														
	Submit and A/E review Submittals		148	10-May-19 A	30-Dec-19	30-Dec-19, Submit and A/E review													
	AE1000	Submit / Approve AB and Embeds	10	10-May-19 A	22-May-19 A														
	AE1010	Submit / Approve Concrete Rebar Shops	7	15-May-19 A	10-Jun-19 A														
	AE1020	Submit / Approve Steel Sequence 1-3 shops B,LVL1&2	10	21-May-19 A	14-Jun-19 A														
	AE1030	Submit / Approve Steel Sequence 4&5 Shops LVL1&2	10	04-Jun-19 A	18-Jun-19 A														
	AE1070	Submit / Approve Steel Sequence 6-10 Shops LVL 3	10	18-Jun-19 A	01-Jul-19 A														
	AE1060	Submit / Approve Utility piping submittals	5	24-Jun-19 A	08-Jul-19 A														
	AE1080	Submit / Approve Steel Sequence 11-15 Shops ROOF	10	28-Jun-19 A	15-Jul-19 A														
	AE1230	Submit/Approve Elevator Submittals	23	28-Jun-19 A	05-Aug-19 A														
	AE1050	Submit / Approve Foundation Waterproofing	5	01-Jul-19 A	10-Jul-19 A														
	AE1040	Submit/Approve Lift Station Submittals	15	08-Jul-19 A	15-Jul-19 A														
	AE1100	Submit / Approve Steel 16 Screenwall shops	10	23-Jul-19 A	09-Aug-19 A														
	AE1110	Submit/Approve Steel Sequence 17 canopy shops	10	23-Jul-19 A	09-Aug-19 A														
	AE1090	Submit / Approve Stair Shops	12	05-Aug-19 A	30-Sep-19														
	AE1140	Submit / Approve Roofing Submittals	6	03-Oct-19	10-Oct-19														
	AE1120	Submit / Approve Framing submittals	15	08-Oct-19	28-Oct-19														
	A2350	Submit / Approve Fireproofing	10	08-Oct-19	21-Oct-19														
	AE1150	Submit / Approve Masonry Submittals	10	23-Oct-19	05-Nov-19														
	AE1160	Submit / Approve Plumbing Fixture/EQ Submittals	10	23-Oct-19	05-Nov-19														
	AE1170	Submit / Approve Lighting Submittals	10	23-Oct-19	05-Nov-19														
	AE1180	Submit / Approve Floor Covering Submittals	20	23-Oct-19	19-Nov-19														
	AE1270	Submit / Approve Metal Panel Submittals	15	29-Oct-19	18-Nov-19														
	A2230	Submit / Approve Composite Wood panels	10	29-Oct-19	11-Nov-19														
	AE1190	Submit / Approve Mechanical EQ Submittals	15	30-Oct-19	19-Nov-19														
	AE1200	Submit / Approve Electrical Gear Submittals	8	30-Oct-19	08-Nov-19														
	AE1220	Submit / Approve Lab Casework submittals	15	30-Oct-19	19-Nov-19														

Primary Baseline

Actual Work

Remaining Work

Critical Remaining ...

Page 4 of 13

TASK filter: All Activities

© Oracle Corporation

Cherokee Nation / OSU CHS - CPM Schedule 1909xx		Classic Schedule Layout				17-Sep-19 15:49													
Activity ID	Activity Name	Original Duration	Start	Finish		O	N	D	J	F	M	A	M	J	J	A	S		
	A2020	Storm Drainage piping East side	8	05-Mar-20	16-Mar-20														
	A2120	Curb and Gutter	10	17-Mar-20	30-Mar-20														
	A2100	Paving down to basement	10	31-Mar-20	13-Apr-20														
	A2110	Road Paving	10	14-Apr-20	27-Apr-20														
	A2130	Sidewalks	10	14-Apr-20	27-Apr-20														
	A2140	Final Grading	15	28-Apr-20	18-May-20														
	A2160	Exterior Railings	10	28-Apr-20	11-May-20														
	A2150	Sod	5	19-May-20	25-May-20														
	Structural Steel		67	09-Sep-19 A	11-Dec-19	11-Dec-19, Structural Steel													
	S2000	Basement to 2nd floor steel Seq 1-2	10	09-Sep-19 A	19-Sep-19	Basement to 2nd floor steel Seq 1-2													
	S2010	Basement lid and 2nd FL south Deck & Detail	7	20-Sep-19	30-Sep-19														
	S2020	Lvl 1 to Lvl2 Hang Steel Seq 3-5	10	01-Oct-19*	14-Oct-19														
	S2050	Lvl 2 North Deck and Detail	5	15-Oct-19	21-Oct-19														
	S2070	Lvl 3 to roof Hang Steel Seq 6-10	10	22-Oct-19	04-Nov-19														
	S2090	Lvl 3 Deck & Detail	10	29-Oct-19	11-Nov-19														
	S2100	Roof Level Steel Seq 11-15	6	05-Nov-19	12-Nov-19														
	S2060	Steel for Stairs	20	12-Nov-19	11-Dec-19														
	S2120	Roof Screen Wall Steel Seq 16	8	13-Nov-19	22-Nov-19														
	S2140	Canopy Steel Seq 17	7	25-Nov-19	05-Dec-19														
	S2130	Roof Deck & Detail	10	26-Nov-19	11-Dec-19														
	Slab On Deck		55	01-Oct-19	18-Dec-19	18-Dec-19, Slab On Deck													
	S2030	Lvl 2 Slab on Deck South	5	01-Oct-19	07-Oct-19														
	S2040	Lvl 1 Slab on Deck (Over Basement)	5	08-Oct-19	14-Oct-19														
	S2080	Lvl 2 Slab on Deck North	5	22-Oct-19	28-Oct-19														
	S2110	Lvl 3 Slab on Deck	10	12-Nov-19	25-Nov-19														
	S2150	Roof Level Slab on Deck	5	12-Dec-19	18-Dec-19														
	Exterior Envelope		162	30-Oct-19	18-Jun-20	18-Jun-20													
	E-1111	Fire Proofing	10	30-Oct-19	12-Nov-19														
	E-1000	Exterior Framing & Sheathing	25	12-Dec-19	27-Jan-20														
	E-1010	Roof Installation	20	07-Jan-20	11-Feb-20														
	E-1030	Temporary Walls @ Openings	10	20-Jan-20	03-Feb-20														
	E-1020	Exterior Moisture Barrier	12	28-Jan-20	19-Feb-20														
	E-1050	EIFS	25	20-Feb-20	25-Mar-20														
	E-1060	Wood Panels	10	20-Feb-20	04-Mar-20														

Primary Baseline

Remaining Work

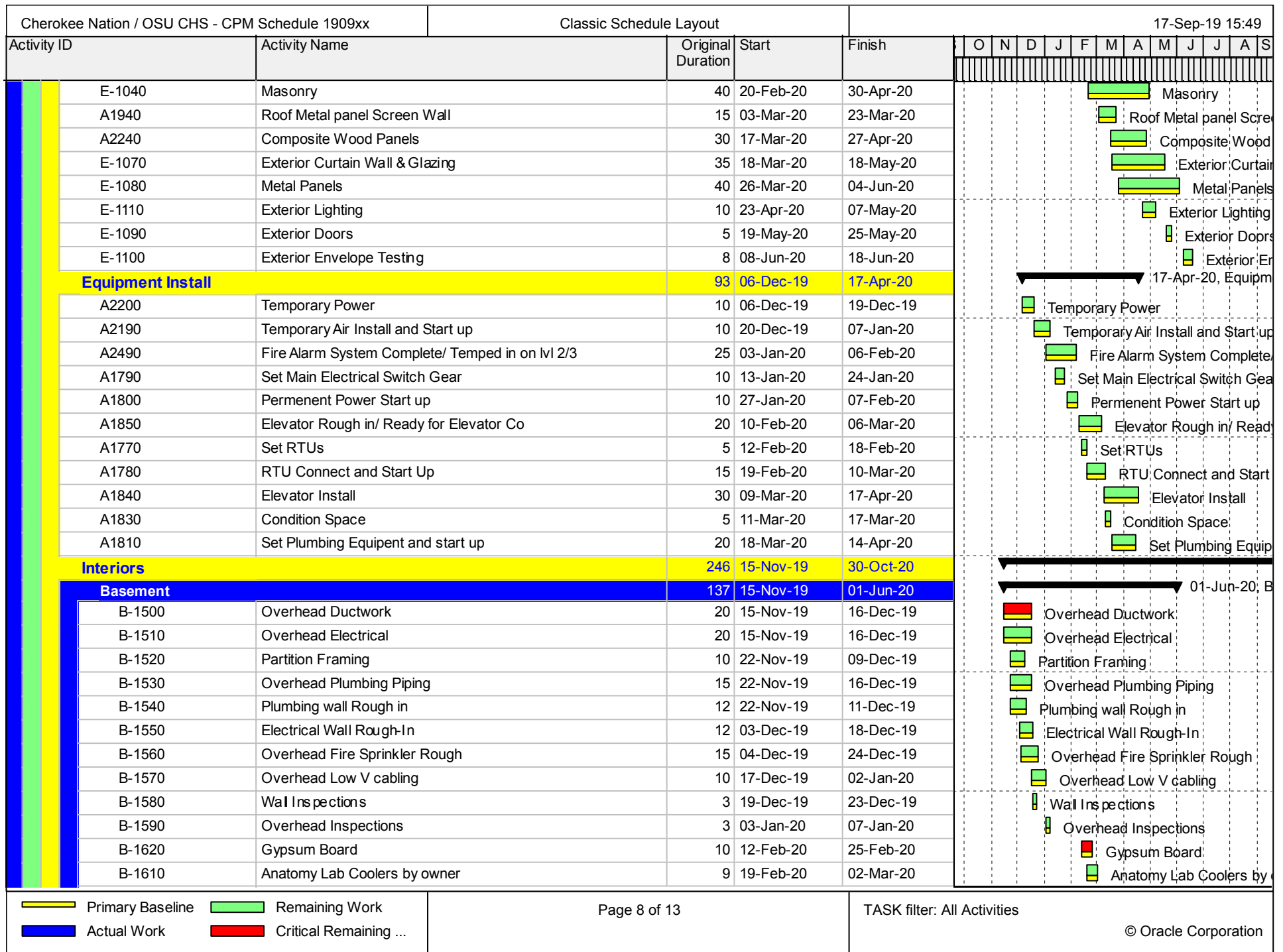
Actual Work

Critical Remaining ...

Page 7 of 13

TASK filter: All Activities

© Oracle Corporation



Cherokee Nation / OSU CHS - CPM Schedule 1909xx			Classic Schedule Layout			17-Sep-19 15:49													
Activity ID	Activity Name	Original Duration	Start	Finish	O	N	D	J	F	M	A	M	J	J	A	S			
B-1640	Gyp Wall Tape & Float	15	26-Feb-20	17-Mar-20															
B-1650	Gyp Ceilings	10	02-Mar-20	13-Mar-20															
B-1710	Lay in Ceilings	5	03-Mar-20	09-Mar-20															
B-1630	Cooler Connections	5	03-Mar-20	09-Mar-20															
B-1615	IDF Fire Protection systems	15	04-Mar-20	24-Mar-20															
B-1730	Ceiling Fixtures	10	06-Mar-20	19-Mar-20															
B-1660	Prime & Paint	10	18-Mar-20	31-Mar-20															
B-1670	Restroom Ceramic Tile	12	18-Mar-20	02-Apr-20															
B-1770	Signage	4	20-Mar-20	25-Mar-20															
B-1600	Ceiling Tiles	5	20-Mar-20	26-Mar-20															
B-1750	Low Voltage Rack and patch panels	15	25-Mar-20	14-Apr-20															
B-1680	Millwork	18	01-Apr-20	24-Apr-20															
B-1760	MEP Trim Out	8	01-Apr-20	10-Apr-20															
B-1690	Plumbing Fixtures	5	03-Apr-20	09-Apr-20															
B-1700	Toilet Partitions & Accessories	4	10-Apr-20	15-Apr-20															
B-1740	Floors	15	22-Apr-20	12-May-20															
B-1720	Doors	5	22-Apr-20	28-Apr-20															
B-1780	Owner Furnished Equipment Install	15	06-May-20	26-May-20															
B-1790	Sealed Floors	5	13-May-20	19-May-20															
B-1800	Owner IT Switches install	9	13-May-20	25-May-20															
B-1810	Start Up & Testing	10	18-May-20	29-May-20															
B-1820	Equipment hook up	10	18-May-20	29-May-20															
B-1830	Final Paint	10	19-May-20	01-Jun-20															
B-1840	Final Clean	5	26-May-20	01-Jun-20															
1st Floor		132	22-Nov-19	01-Jun-20															
Lvl1-1500	Duct Chases to Roof	25	22-Nov-19	02-Jan-20															
Lvl1-1510	Overhead Ductwork	25	03-Dec-19	09-Jan-20															
Lvl1-1520	Overhead Electrical	20	03-Dec-19	02-Jan-20															
Lvl1-1530	Partition Framing	15	10-Dec-19	02-Jan-20															
Lvl1-1540	Overhead Plumbing Piping	15	10-Dec-19	02-Jan-20															
Lvl1-1550	Overhead Fire Sprinkler Rough	20	10-Dec-19	09-Jan-20															
Lvl1-1560	Plumbing wall Rough in	17	10-Dec-19	06-Jan-20															
Lvl1-1570	Lab Air OH Piping	15	17-Dec-19	09-Jan-20															
Lvl1-1580	Electrical Wall Rough-In	20	24-Dec-19	23-Jan-20															

Primary Baseline Remaining Work
Actual Work Critical Remaining ...

01-Jun-20, 1

Duct Chases to Roof
Overhead Ductwork
Overhead Electrical
Partition Framing
Overhead Plumbing Piping
Overhead Fire Sprinkler Rough
Plumbing wall Rough in
Lab Air OH Piping
Electrical Wall Rough-In

Cherokee Nation / OSU CHS - CPM Schedule 1909xx		Classic Schedule Layout				17-Sep-19 15:49																																																																																																																																																																																																																																																																																																																																																																																																																																																																																																																																																																																																																																																																																																																																																																																																																																																																																																																																																																																																																																																																																																																																																																																																																																																																																																																																																																																																																																																																													
Activity ID		Activity Name		Original Duration	Start	Finish	O N D J F M A M J J A S																																																																																																																																																																																																																																																																																																																																																																																																																																																																																																																																																																																																																																																																																																																																																																																																																																																																																																																																																																																																																																																																																																																																																																																																																																																																																																																																																																																																																																																																												
<div><div></div><div></div><div></div></div>	Lvl1-1590	Overhead Low V cabling	12	03-Jan-20	20-Jan-20																																																																																																																																																																																																																																																																																																																																																																																																																																																																																																																																																																																																																																																																																																																																																																																																																																																																																																																																																																																																																																																																																																																																																																																																																																																																																																																																																																																																																																																																														

Primary Baseline
 Remaining Work
 Actual Work
 Critical Remaining ...

Cherokee Nation / OSU CHS - CPM Schedule 1909xx			Classic Schedule Layout			17-Sep-19 15:49													
Activity ID	Activity Name	Original Duration	Start	Finish		O	N	D	J	F	M	A	M	J	J	A	S		
Lvl2-1020	Partition Framing	15	13-Apr-20	01-May-20															Partition Framing
Lvl2-1030	Overhead Plumbing Piping	15	13-Apr-20	01-May-20															Overhead Plumb
Lvl2-1040	Overhead Fire Sprinkler Rough	20	13-Apr-20	08-May-20															Overhead Fire S
Lvl2-1050	Plumbing wall Rough in	17	13-Apr-20	05-May-20															Plumbing wall Ro
Lvl2-1060	Lab Air OH Piping	15	20-Apr-20	08-May-20															Lab Air OH Pipin
Lvl2-1070	Electrical Wall Rough-In	17	27-Apr-20	19-May-20															Electrical Wall
Lvl2-1080	Overhead Low V cabling	12	04-May-20	19-May-20															Overhead Low
Lvl2-1090	Gypsum Board	15	13-May-20	02-Jun-20															Gypsum Boa
Lvl2-1120	Lay in Ceilings	10	20-May-20	02-Jun-20															Lay in Ceiling
Lvl2-1130	Overhead Inspections	3	20-May-20	22-May-20															Overhead Ins
Lvl2-1140	Wall Inspections	3	20-May-20	22-May-20															Wall Inspectio
Lvl2-1150	Ceiling Fixtures	16	25-May-20	15-Jun-20															Ceiling Fixt
Lvl2-1110	Gyp Wall Tape & Float	20	03-Jun-20	30-Jun-20															Gyp Wall
Lvl2-1170	Low Voltage System Trim out	8	03-Jun-20	12-Jun-20															Low Voltage
Lvl2-1290	Head Walls Install	15	03-Jun-20	23-Jun-20															Head Wal
Lvl2-1160	Gyp Ceilings	15	08-Jun-20	26-Jun-20															Gyp Ceiling
Lvl2-1190	Signage	6	16-Jun-20	23-Jun-20															Signage
Lvl2-1200	Ceiling Tiles	7	16-Jun-20	24-Jun-20															Ceiling Til
Lvl2-1240	Terazzo Floors	15	25-Jun-20	15-Jul-20															Terazzo
Lvl2-1210	Prime & Paint	15	01-Jul-20	21-Jul-20															Prime
Lvl2-1220	Restroom Ceramic Tile	15	01-Jul-20	21-Jul-20															Restro
Lvl2-1250	Wall Protection and Wood Panels	20	01-Jul-20	28-Jul-20															Wall
Lvl2-1230	Millwork	25	08-Jul-20	11-Aug-20															Mill
Lvl2-1260	Plumbing Fixtures	11	22-Jul-20	05-Aug-20															Plun
Lvl2-1270	MEP Trim Out	12	22-Jul-20	06-Aug-20															MEP
Lvl2-1280	Lobby Stairs and Rails	20	22-Jul-20	18-Aug-20															Lo
Lvl2-1300	Toilet Partitions & Accessories	10	06-Aug-20	19-Aug-20															To
Lvl2-1310	Floors	20	07-Aug-20	03-Sep-20															
Lvl2-1320	Doors	10	07-Aug-20	20-Aug-20															Do
Lvl2-1330	Owner Furnished Equipment Install	15	04-Sep-20	24-Sep-20															
Lvl2-1340	Owner EMS System	10	11-Sep-20	24-Sep-20															
Lvl2-1350	Start Up & Testing	10	16-Sep-20	29-Sep-20															
Lvl2-1360	Equipment hook up	10	16-Sep-20	29-Sep-20															
Lvl2-1370	Final Paint	15	17-Sep-20	07-Oct-20															

Primary Baseline
 Remaining Work
 Actual Work
 Critical Remaining ...

Cherokee Nation / OSU CHS - CPM Schedule 1909xx			Classic Schedule Layout			17-Sep-19 15:49												
Activity ID	Activity Name	Original Duration	Start	Finish	O	N	D	J	F	M	A	M	J	J	A	S		
Lvl2-1380	Final Clean	5	08-Oct-20	14-Oct-20														
3rd Floor		125	11-May-20	30-Oct-20														
Lvl3-1000	Overhead Ductwork	25	11-May-20	12-Jun-20														Overhead D
Lvl3-1010	Overhead Electrical	20	11-May-20	05-Jun-20														Overhead E
Lvl3-1020	Partition Framing	15	18-May-20	05-Jun-20														Partition Fra
Lvl3-1030	Overhead Plumbing Piping	15	18-May-20	05-Jun-20														Overhead P
Lvl3-1040	Overhead Fire Sprinkler Rough	20	18-May-20	12-Jun-20														Overhead F
Lvl3-1050	Plumbing wall Rough in	17	18-May-20	09-Jun-20														Plumbing wa
Lvl3-1060	Lab Air OH Piping	15	25-May-20	12-Jun-20														Lab Air OH
Lvl3-1070	Electrical Wall Rough-In	17	01-Jun-20	23-Jun-20														Electrical
Lvl3-1080	Overhead Low V cabling	12	08-Jun-20	23-Jun-20														Overhead
Lvl3-1090	Gypsum Board	15	17-Jun-20	07-Jul-20														Gypsum
Lvl3-1100	Classroom stadium framing and concrete	10	19-Jun-20	02-Jul-20														Classroo
Lvl3-1110	Gyp Wall Tape & Float	20	24-Jun-20	21-Jul-20														Gyp V
Lvl3-1120	Lay in Ceilings	10	24-Jun-20	07-Jul-20														Lay in C
Lvl3-1130	Overhead Inspections	3	24-Jun-20	26-Jun-20														Overhead
Lvl3-1140	Wall Inspections	3	24-Jun-20	26-Jun-20														Wall Ins p
Lvl3-1150	Ceiling Fixtures	16	29-Jun-20	20-Jul-20														Ceiling
Lvl3-1160	Gyp Ceilings	15	29-Jun-20	17-Jul-20														Gyp C
Lvl3-1170	Low Voltage System Trim out	8	08-Jul-20	17-Jul-20														Low V
Lvl3-1180	Head Walls Instal	15	08-Jul-20	28-Jul-20														Head
Lvl3-1200	Signage	6	21-Jul-20	28-Jul-20														Signa
Lvl3-1210	Ceiling Tiles	7	21-Jul-20	29-Jul-20														Ceilin
Lvl3-1220	Prime & Paint	15	22-Jul-20	11-Aug-20														Prim
Lvl3-1230	Restroom Ceramic Tile	15	22-Jul-20	11-Aug-20														Re
Lvl3-1240	Wall Protection and Wood Panels	20	22-Jul-20	18-Aug-20														W
Lvl3-1250	Millwork	25	29-Jul-20	01-Sep-20														
Lvl3-1260	Terazzo Floors	15	30-Jul-20	19-Aug-20														Te
Lvl3-1270	Plumbing Fixtures	11	12-Aug-20	26-Aug-20														P
Lvl3-1280	MEP Trim Out	12	12-Aug-20	27-Aug-20														N
Lvl3-1190	Lecture hall tables	10	12-Aug-20	25-Aug-20														L
Lvl3-1290	Lobby Stairs and Rails	20	12-Aug-20	08-Sep-20														
Lvl3-1310	Floors	20	21-Aug-20	17-Sep-20														
Lvl3-1320	Doors	10	21-Aug-20	03-Sep-20														

Primary Baseline
 Remaining Work
 Actual Work
 Critical Remaining ...

OSU College of Osteopathic Medicine at the Cherokee Nation

BID PACKAGE 6A: INTERIOR ARCHITECTURAL WOODWORK AND MILLWORK - COMPLETE

Specification Section	Description
DIVISION 0	Procurement and Contracting Requirements
DIVISION 1	General Requirements
061053	Miscellaneous Rough Carpentry, pertinent portions thereof applicable to the work of this bid package
064023	Interior Architectural Woodwork, complete
064026	Interior Architectural Woodwork Hardware, complete
079200	Joint Sealants, pertinent portions thereof applicable to the work of this bid package
117000	Medical Equipment, pertinent portions thereof applicable to the work of this bid package
123661	Simulated Stone Countertops, complete

(In addition to the Specification Sections listed, Bidders will include work from referenced specifications and other work normally associated with this trade whether referenced or not.)

Definition of Terms

Contractor = Bidder

Construction Manager = Cooper Flintco, LLC

Owner = Cherokee Nation Property Management, L.L.C.

Architect = Childers / HKS

The scope of work of this bid package shall also include the following items, but without limiting the scope of work as provided above:

- 1) Furnish and install all interior wood materials including all standing and running trim as required by the contract documents.
- 2) Furnish and install all wood, metal or plastic laminate-faced architectural woodwork, millwork, counters, shelving, vanities, case work, window sills, shadow box sills, and wooden handrails, etc. as required by the contract documents for a complete installation.
- 3) Include shop finishing, staining and clear finishing of all wood cabinets, paneling, and wood trim as specified on the Contract Documents.
- 4) Include pre-finishing of millwork and casework items as required by the contract documents, including touch-up after installation and prior to final acceptance.
- 5) Furnish and install materials to build all pony and/or die walls part of millwork, shelving, and countertops. Including all studs, plywood substrates, steel, etc. as indicated on the contract documents.
- 6) Furnish and install all wood trim including, but not limited to, wood base, plinth blocks, wood casing, wood molding, crown molding, wood shelving, wood corbels, picture molding, wood trim at interior and exterior windows, paint grade exposed plywood and solid wood sheathing, end molding, chair rail, and hand carved hardwood as shown on the Contract Documents.
- 7) Furnish and install ornamental woodwork as shown on the Contract Documents.
- 8) Furnish and install all wood floor base material as specified in the Contract Documents.
- 9) Furnish and install wood and solid surface top caps at handrails as shown on the Contract Documents.
- 10) Furnish and install engineered stone, granite, quartz, marble, epoxy resin, and solid surfacing countertops and sinks as required by the contract documents. Include all backsplashes.
- 11) Furnish and install engineered stone, granite, marble, solid surface, and wood window sills as shown on the Contract Documents.
- 12) Furnish and install all decorative materials on the reception desks, nurse stations and millwork for a complete installation. Include mirrors, wall brackets, decorative railing, metal panels, metal laminate, magnetic laminate, resin panels, standoffs, metal trim, brace supports, and solid surfacing as shown.

OSU College of Osteopathic Medicine at the Cherokee Nation

- 13) Install all glazing wood stops on wood doors. Fill all nail holes. Coordinate installation with the glazing contractor and touch up finishing with the painting contractor.
- 14) This bid package includes wood blocking on the outside of drywall partitions for millwork, required for a complete installation.
- 15) Furnish and install all hardwood veneer as shown on millwork items.
- 16) Furnish and install all resin panels complete as shown on the contract documents. Include all necessary supports, mounting brackets, attachments, and accessories required for a complete installation.
- 17) Furnish and install all materials and fasteners necessary to complete the installation of custom cabinetry/millwork.
- 18) Furnish and install architectural woodwork hardware as required by the contract documents.
- 19) Furnish and install all accessories required for a complete installation. Include work surfaces and countertop supports including tube steel frame and aluminum or steel angle bracing supports as detailed. Including in wall steel and steel frames for counter tops and support of millwork as detailed on the drawings.
- 20) Furnish and install all adjustable glass shelving in the millwork as indicated in the Contract Documents.
- 21) Furnish and install all decorative glass with vinyl films in the millwork as shown on the Contract Documents.
- 22) Furnish and install all grommets. Install grommets as directed by the owner after the installation of the cabinetry/millwork is complete.
- 23) Furnish and install all wood shelving shown in closets, storage rooms, etc. as shown on the Contract Documents.
- 24) Provide cutouts for plumbing fixtures, inserts, appliances, outlet boxes, and other fixtures and fittings. Seal contact surfaces of cut edges. Coordinate cutout requirements with the Construction Manager.
- 25) Install under mount sinks in countertops provided with in this bid package, plumber to supply sinks.
- 26) Furnish and install all room vanities with removable pipe protection ADA panels as shown on the Contract Documents. Include all required mounting brackets, supports, blocking, and hardware.
- 27) Furnish and install all fillers, scribed pieces, or other materials as required for a proper installation.
- 28) Furnish and install scribe edges as indicated on the Contract Documents.
- 29) Furnish and install backsplashes as shown on the Contract Documents.
- 30) Furnish and install all mineral fiber board and cork tack board in millwork as shown on the Contract Documents.
- 31) Furnish and install wood filler for nail holes and joint cracks as required for aesthetic purposes and as required for a complete installation. Caulk at solid surface countertops to wall.
- 32) Furnish and install all caulking and sealants relating to the work of this bid package in accordance with the contract documents. Include all caulking at millwork and trim joints such as laminate to laminate joints, countertop to backsplashes, trim edges and joints, etc.
- 33) Provide temporary task lighting beyond OSHA minimum requirements as required by the scope of work of this bid package.
- 34) Provide positive ventilation as required by authorities having jurisdiction.
- 35) Contractor is responsible for their own field measurements.
- 36) Contractor shall handle, ship, and store materials in such a manner that it will not be damaged or deformed. Upon receipt, all material having defects that may affect serviceability of use for the intended purpose or appearance will be rejected, shall not be used, and shall be replaced immediately by this supplier at no additional cost.
- 37) Contractor shall provide all labor, on-site supervision, services, material, equipment, tools and supplies necessary for or incidental to the complete installation in strict compliance with the approved submittals, construction documents, and manufacturer's installation instructions.
- 38) Contractor shall be responsible for verifying in-place construction and primary supports. Report, in writing to Construction Manager any conditions detrimental to proper and timely completion of work in accordance with the project specifications. Include field measurement in existing spaces.
- 39) Contractor shall be responsible for unloading upon delivery to the project site, inventory same, and inspect for shipping damage. Store and protect materials until final acceptance. Notify construction manager of any damaged equipment upon discovery. Contractor shall expedite delivery of any damaged equipment at no additional cost to the owner of construction manager.
- 40) Contractor shall be responsible for moving material from the storage area to each respective opening for installation. Any items damaged due to this relocation and installation process shall be repaired or replaced by this Contractor at the discretion of the owner and Construction Manager.
- 41) Contractor shall make final adjustments and alignments as may be required to the satisfaction of the Construction Manager and the Owner prior to final acceptance and project closeout.
- 42) Contractor shall coordinate installation dates with Construction Manager in accordance with the project schedule and regular updates of this schedule.

OSU College of Osteopathic Medicine at the Cherokee Nation

- 43) Exclude WDC ceilings. Exclude wood wall panel system at elevator lobby walls. Include Wood paneling only that is part of the millwork.
- 44) Contractor shall review equipment schedule and include installation only of the following items 3278b, 8403c, 8403d, 8403e, 8404. Contractor shall furnish and install items 1422 and 1424c.
- 45) Contractor to provide professional liability insurance, as required per the specifications for all delegated design and professional engineering.
- 46) EXCLUDE the costs for Performance and Payment Bonds in the base bid.
- 47) Please provide sample Change Order proposal with a detailed break out for review at descope. Please also include the following unit prices to be inclusive of labor, equipment, and material for the following packages. These unit prices will be for reference only and if accepted by owner will be included the subcontract of the successful bidder.

Work excluded from this bid package:

- 1.) Stainless steel cabinets
- 2.) Phenolic cabinets
- 3.) Wood Blocking inside of drywall partitions.
- 4.) Elevator Cab finishes
- 5.) Cabinets denoted "by owner" or "future".

NOTE: Each week, the Construction Manager will specify one day for general cleanup. During the extent of your contract, you will provide the Construction Manager with ONE laborer for this cleanup. This will not supersede daily cleanup of the work area as stipulated in Bid Package General Requirements (Document 004600).

BID PACKAGE 6A: INTERIOR ARCHITECTURAL WOODWORK AND MILLWORK - COMPLETE

BID PACKAGE – BASE BID

BASE BID to furnish and install materials as required by this bid package and listed specification sections.

@ _____ Dollars

\$ _____

ADDITIVE COST to furnish Performance and Payment Bonds for this Bid Package.

@ _____ Dollars

\$ _____

BREAKOUT COST FOR TAX EXEMPT MATERIAL

Material cost is included in base bid above and is for informational purposes.

@ _____ Dollars

\$ _____

OSU College of Osteopathic Medicine at the Cherokee Nation

EMR _____

ALTERNATE PRICING

BID ALTERNATE #1 – Furnish and install the prefabricated head wall assemblies, equipment items 8403c, 8403d, 8403e, 8404 as specified in the equipment schedule. The following accessories shall be included with the head wall assemblies for connection by MEP: Items 3175, 3175a, 7315, 7316, 7317

@ _____ Dollars

\$ _____

COST to furnish Performance and Payment Bonds for this Alternate.

@ _____ Dollars

\$ _____

OSU College of Osteopathic Medicine at the Cherokee Nation

NATIVE AMERICAN CERTIFICATIONS

TERO Certified "Indian Owned Business" with majority owners Cherokee citizens	YES/NO (Please circle)
TERO Certified "Indian Owned Business"	YES/NO (Please circle)
"Major Cherokee Employer" as certified by TERO	YES/NO (Please circle)

LABOR RATES		
DESCRIPTION (All rates are inclusive of overhead and profit)	UNIT	UNIT COST
Foreman labor rate – fully burdened (includes vehicles, tools, etc.)	Per HR	
Journeyman labor rate – fully burdened (includes vehicles, tools, etc.)	Per HR	
Apprentice labor rate – fully burdened (includes vehicles, tools, etc.)	Per HR	

DELINEATION OF NATIVE AMERICAN PARTICIPATION			
	COMPANY	TRADE	TERO CERTIFIED (YES or NO)
1-			
2-			
3-			
4-			
5-			
USE THIS AREA FOR ADDITIONAL COMMENTS REGARDING THE USE OF NATIVE AMERICAN COMPANIES OR THE EMPLOYMENT OF NATIVE AMERICANS:			

Company: _____
 Contact Name: _____
 Phone: _____
 Email: _____
 Fax: _____

OSU College of Osteopathic Medicine at the Cherokee Nation

BID PACKAGE 26A: ELECTRICAL - COMPLETE

Specification Section	Description
DIVISION 0	Procurement and Contracting Requirements
DIVISION 1	General Requirements
055000	Metal Fabrications, pertinent portions thereof applicable to the work of this bid package
077200	Roof Accessories, pertinent portions thereof applicable to the work of this bid package
078413	Through-Penetration Firestop Systems, pertinent portions thereof applicable to the work of this bid package
079200	Joint Sealants, pertinent portions thereof applicable to the work of this bid package
083113	Access Doors and Frames, pertinent portions thereof applicable to the work of this bid package
083400	Specialty Function Doors, pertinent portions thereof applicable to the work of this bid package
087122	Automatic Door Operators for The disabled, pertinent portions thereof applicable to the work of this bid package
101400	Signage, pertinent portions thereof applicable to the work of this bid package
102238	Operable Panel Partitions, pertinent portions thereof applicable to the work of this bid package
102813	Toilet Accessories, pertinent portions thereof applicable to the work of this bid package
115213	Projection Screens and Lifts, pertinent portions thereof applicable to the work of this bid package
117000	Medical Equipment, pertinent portions thereof applicable to the work of this bid package
142100	Electric Traction Elevators, pertinent portions thereof applicable to the work of this bid package
DIVISION 21	FIRE SUPPRESSION, pertinent portions thereof applicable to the work of this bid package
DIVISION 22	PLUMBING, pertinent portions thereof applicable to the work of this bid package
DIVISION 23	HEATING, VENTILATING & AIR CONDITIONING, pertinent portions thereof applicable to the work of this bid package
255050	Direct Digital Controls System, pertinent portions thereof applicable to the work of this bid package
260519	Low-Voltage Electrical Power Conductors and Cables, complete
260526	Grounding and Bonding for Electrical Systems, complete
260529	Hangers and Supports for Electrical Systems, complete
260533	Raceway and Boxes for Electrical Systems, complete
260536	Cable trays for Electrical Systems, complete
260539	Underfloor Raceways for Electrical Systems, complete
260543	Underground Ducts and Raceways for Electrical Systems, complete
260544	Sleeves and Sleeve Seals for Electrical Raceways and Cabling, complete
260548	Seismic Controls for Electrical Systems, complete
260553	Identification for Electrical Systems, complete
260571	Electrical System Protective Study, complete
260574	Overcurrent Protective Device Coordination and Arc Flash Study, complete
260923	Lighting Control Devices, complete
260943	Network Lighting Controls, complete
262200	Low Voltage Transformers, complete
262413	Switchboards, complete
262416	Panelboards, complete

OSU College of Osteopathic Medicine at the Cherokee Nation

262713	Electricity Metering, complete
262726	Wiring Devices, complete
262816	Enclosed Switches and Circuit Breakers, complete
262923	Variable Frequency Motor Controllers, complete
263213	Engine Generators, complete
263600	Transfer Switches, complete
263623	Automatic Transfer Switches, complete
264113	Lightning Protection for Structures, complete
264313	Surge Protective Devices for Low-Voltage Electrical Power Circuits, complete
265119	Led Interior Lighting, complete
265619	Led Exterior Lighting, complete
270000	Network Construction Standards and Requirements, pertinent portions thereof applicable to the work of this bid package
275313	Clock Systems, Complete
279000	Distribution Antenna System, pertinent portions thereof applicable to the work of this bid package
283211	Digital, Addressable Fire-Alarm System, complete
310100	Earthwork, pertinent portions thereof applicable to the work of this bid package
312216	Fine Grading, pertinent portions thereof applicable to the work of this bid package

(In addition to the Specification Sections listed, Bidders will include work from referenced specifications and other work normally associated with this trade whether referenced or not.)

Definition of Terms

Contractor = Bidder

Construction Manager = Cooper Flintco, LLC

Owner = Cherokee Nation Property Management, L.L.C.

Architect = Childers / HKS

The scope of work of this bid package shall also include the following items, but without limiting the scope of work as provided above:

- 1.) Furnish and install a complete, fully operational, and tested electrical system in accordance with the contract documents, City requirements, the National Electric Code, and all Authorities having jurisdiction. It is the intent and meaning of the contract documents that this Contractor provide an electrical system installation that is complete and all items and apparatuses necessary, reasonably incidental, or customarily included, even though each and every item is not specifically called out or shown.
- 2.) Include installation, maintenance and removal of temporary electrical services in accordance with current OSHA requirements and local jurisdictions for the project including services for Construction Manager's field office compound and lighting. Include required temporary service (1,000 Amp power) for the use of all contractors with a minimum of two panels per floor with a 100' maximum distribution length to a panel.
- 3.) Due to the design development of this project, the under slab raceway work has been previously awarded. The under slab electrical raceway work is to be excluded from this package for the basement and 1st floor slabs on grade. The secondary raceways from the transformer to the main electrical room have been installed to just inside the room, the electrical room slab will be blocked out, and 26A contractor shall continue raceways in electrical rooms from existing locations to new gear. Contractor to visit site to review conditions, as 26A contractor will be responsible for continuing raceways.
- 4.) Exclude floor box housings in the 1st floor and basement slab. Furnish and install floor box devices, cover plates, wiring etc.
- 5.) Exclude raceways and feeders for primary feeders to transformer from utility pole as this will be complete by TPWA.

OSU College of Osteopathic Medicine at the Cherokee Nation

- 6.) The fiber optic raceway on the north side of the building is terminated 5' outside the building. 26A Contractor shall be responsible for excavation and installation of this line from 5' outside the building to the location shown on the civil documents.
- 7.) Contractor shall furnish and install a complete exterior site and building lighting system, including but not limited to all underground conduit, rough-in, wiring, fixtures, and miscellaneous accessories required. Provide material for anchor bolts and templates for light pole standards but exclude installation. Concrete bases for light poles installed by others. Include lighting under the exterior walkways and canopies.
- 8.) Provide a schedule and coordinate all electrical interruptions with the Construction Manager and Owner and do not proceed without written permission.
- 9.) Perform all excavation, backfilling, compaction and final grading as required for this package (Exclude under slab on grade on work as previously mentioned.). Backfilling shall be done in a manner that returns the disturbed area to the condition in which it was found, i.e. if you dig through a construction work road you put the gravel back.
- 10.) Furnish and install all sleeves and piping in concrete slabs on deck if required.
- 11.) Contractor is responsible for all core holes and structural penetrations required by this bid package. Prior to forming oversize holes, this Contractor will layout exact requirements. If coring is required, this Contractor will be responsible to protect adjacent surfaces and clean up coring water and debris.
- 12.) Provide and install all exterior and interior underground, in-ground conduits, and junction boxes as shown on the Contract Documents.
- 13.) Furnish and install power, including conduit and wiring, for the exterior signage, and site amenities as shown on the Contract Documents.
- 14.) Furnish and install secondary wiring to the transformer as shown on the Contract Documents. Transformer and final hook-up of transformer to be provided by TPWA. Exclude underground conduit.
- 15.) Furnish and install all required cable tray as indicated in the Contract Documents.
- 16.) Furnish and install all rough-in requirements including conduit, pull wire, raceways and boxes for the low voltage systems including, but not limited to, fire alarm, structured cabling, nurse call system, intercom/paging system, surveillance system, access control, clock system, antenna system, audio/visual, communications systems, signage and all low voltage systems as specified in the Contract Documents.
- 17.) Furnish and install all rough-in requirements including raceways, conduit, pull wire and boxes in an accessible location for the exterior building signage. Signage contractor will install low voltage wiring for sign and terminate. Coordinate with sign contractor for connection of power for signage.
- 18.) Furnish and install a complete, fully operational, and tested fire alarm system in accordance with the contract documents.
- 19.) Furnish and install all duct detectors and alarm wiring as shown on the Contract Documents. Coordinate with the mechanical contractor for installation. Exclude duct detectors that are factory installed with the mechanical equipment as specified.
- 20.) Furnish and install all wiring, conduit, transformers, and connections to fire alarm panel for the smoke and fire dampers.
- 21.) Furnish and install a complete, fully operational, and tested clock system in accordance with the contract documents.
- 22.) Exclude the access control and video security system, structured cabling (voice and data cabling), nurse call system, CCTV surveillance system and communications systems as specified in the Contract Documents.
- 23.) Furnish and install emergency generator and all associated transfer switches as specified in the Contract Documents.
- 24.) Furnish and install all lightning protection as shown in the Contract Documents.
- 25.) Exclude HVAC control wiring. Install all conduit for HVAC control wiring.
- 26.) Furnish and install all power sources for HVAC controls systems.
- 27.) Contractor to install all low and high voltage as required for automatic flush valves per the Contract Documents.
- 28.) Furnish and install power supply for irrigation controls as shown on the Contract Documents.
- 29.) Furnish and install all light fixtures with lenses, supports, brackets, and standards for mounting light fixtures. Include all wiring, bulbs, lamps, and conduit required to complete the electrical system shown on the Architectural and Electrical drawings.
- 30.) Furnish and install all lighting controls systems and devices per the contract documents.
- 31.) Furnish and install all motor starters and/or starter disconnects for all electrical and mechanical equipment. Exclude factory installed motor starters and/or starter disconnects for mechanical equipment if specified.
- 32.) Install all wiring to mechanical equipment from disconnects as required by the Contract Documents.

OSU College of Osteopathic Medicine at the Cherokee Nation

- 33.) Furnish and install all VFD and VFC's as indicated in the Contract Documents. Exclude factory installed VFD and VFC's for mechanical equipment if specified but include connection as shown on the Contract Documents.
- 34.) Furnish and install power wiring, conduit, transformers and hook up of baseboard heaters. Coordinate HVAC controls with HVAC subcontractor. Low voltage control of heaters by HVAC subcontractor.
- 35.) Turn over to Mechanical Contractor all items, which are specified to be furnished by this Contractor and installed by the mechanical trades.
- 36.) Furnish and install all electrical connections and final power hook-ups required for the equipment, specialties and appliances provided by others including basement walk in coolers, laboratory casework, medical equipment, Owner furnished equipment and appliances.
- 37.) Furnish power supply, conduit and wire to point of connection for all heat tracing that is required by the contract documents. Heat tracing installation will be by others.
- 38.) Furnish and install power supply for fire suppression system exterior alarm at fire department connection per local code requirements.
- 39.) Furnish and install power wiring, conduit, transformers and hook up of magnetic door holders.
- 40.) Furnish and install power wiring, conduit, transformers and hook up of toilet sensors.
- 41.) Furnish and install power wiring, conduit, transformers and hook up of window treatments and roller shades as required.
- 42.) Provide electrical connection to power supplies for electronic door hardware. Provide conduit from power supply location to door frame with pull strings from power transfer hinge location to power supply or location of the connection of the electronic hardware to the power supply. Also provide pull string from door contact location to above ceiling.
- 43.) Furnish and install wood or metal backing as required for items furnished and installed under this bid package.
- 44.) Furnish and install all electrical work as required for equipment, fixtures, etc. as noted or indicated on the architectural drawings.
- 45.) Furnish and install all miscellaneous steel, unistrut, all-thread rod and accessories required for pipe supports, trapeze hangers, wall penetrations, floor penetrations and equipment supports associated with this Contractor's scope of work.
- 46.) Furnish and install all roof curbs, sleeves, pitch pockets, flashing, roof penetration enclosures and/or supports compatible with the roof installation for electrical penetrations through the roof and for rooftop electrical equipment.
- 47.) Furnish and install all electrical systems requirements for the Owner furnished medical equipment including rough-in for all systems, low voltage systems and final power connections per the Contract Documents. This shall include, but is not limited to, floor duct systems, wall duct systems, ceiling duct systems, cable tray, conduit, boxes, etc. Coordinate all final requirements with Construction Manager and Owner's medical equipment vendors.
- 48.) Provide instructional training to Owner's representatives of the electrical system operation and maintenance.
- 49.) Furnish all required access doors required by the work of this bid package. Installation of access doors by others. Coordinate locations and rough opening sizes with the other trades prior to the start of their work in the areas that the access doors are being installed. Costs associated with adding access doors after the walls have been completed will be deducted from this subcontract.
- 50.) Furnish and install all electrical systems identification including color-coding, stencils, labels, tags, etc., required by the contract documents or the Authorities having jurisdiction.
- 51.) Furnish and install all sleeves, rings, fasteners, and covers etc. required to complete the Work of this bid package.
- 52.) Furnish and install fire stopping, fire sealing, and sound caulking of the work of this bid package. Include acoustical treatment on electrical devices and boxes as shown in the contract documents.
- 53.) At the time that the HVAC system is required to be placed in service to move controlled air to allow for finish construction to be accomplished per the project schedule, it will be this Contractors responsibility to coordinate with Mechanical contractor to insure all necessary power systems are available to facilitate this. All reasonable efforts and/or methods should be taken to expedite the use of these systems. Prior to final acceptance all the equipment shall be serviced per manufacturers requirements, including installation of new devices as necessary and the warranties will begin at substantial completion as defined by the Owner, Architect, and Construction Manager. Any extended warranties and servicing of equipment required to achieve this will be the responsibility of this contractor.

OSU College of Osteopathic Medicine at the Cherokee Nation

- 54.) Include installation of permanent and / or temporary three-phase power and single-phase power of permanent characteristics for installation of elevator(s) and temporary use of the elevators for construction purposes per the project schedule.
- 55.) Include all fire alarm requirements for installation of elevator(s) and temporary use of the elevators for construction purposes per the project schedule.
- 56.) Include electrical systems testing and load balancing in accordance with the contract documents and Authorities having jurisdiction.
- 57.) Include unloading, hoisting and placement of material and equipment at the jobsite upon delivery as required for the scope of this bid package.
- 58.) Provide temporary task lighting beyond OSHA minimum requirements as required by the scope of work of this bid package.
- 59.) Coordinate all work with Fire Sprinkler, HVAC and Plumbing contractors. Ductwork shall have priority in utility spaces. Coordination drawings and attendance at coordination meetings will be required.
- 60.) Contractor is responsible for all field measurements.
- 61.) Contractor to include coordination and submittal drawings incorporating electrical work in file format required.
- 62.) Contractor shall include temporary power for a temp air unit to be provided by the HVAC contractor.
- 63.) Contractor shall include electrical connections between condensers and mini split systems as indicated on the contract documents.
- 64.) Contractor shall review equipment schedule, and provide rough in and final hook up for all electrical and/or fire alarm items as specified to be contractor installed. Include electrical devices and/or floor boxes for these items as required.
- 65.) **Review schedule and included expediting materials as required. Contractor shall also provide man power to be working on at least 2 floors at a time.**
- 66.) **All shop drawings must be drafted and coordinated in BIM (reference BIM Project Requirements).**
- 67.) **Contractor to provide professional liability insurance, as required per the specifications for all delegated design and professional engineering.**
- 68.) **EXCLUDE the costs for Performance and Payment Bonds in the base bid.**
- 69.) **Please provide sample Change Order proposal with a detailed break out for review at descope. Please also include the following unit prices to be inclusive of labor, equipment, and material for the following packages. These unit prices will be for reference only and if accepted by owner will be included the subcontract of the successful bidder.**

Work specifically excluded from this bid package:

- 1.) Access Control Systems
- 2.) Security System
- 3.) Structured Cabling Systems
- 4.) Communications Systems
- 5.) Intercom/Paging System
- 6.) CATV Systems
- 7.) Audio/Visual Equipment
- 8.) Under slab on grade raceways.

NOTE: Each week, the Construction Manager will specify one day for general cleanup. During the extent of your contract, you will provide the Construction Manager with TWO laborers for this cleanup. This will not supersede daily cleanup of the work area as stipulated in Bid Package General Requirements (Document 004600).

OSU College of Osteopathic Medicine at the Cherokee Nation

BID PACKAGE 26A: *ELECTRICAL - COMPLETE*

BID PACKAGE – BASE BID

BASE BID to furnish and install materials as required by this bid package and listed specification sections.

@ _____ Dollars

\$ _____

ADDITIVE COST to furnish Performance and Payment Bonds for this Bid Package.

@ _____ Dollars

\$ _____

EMR Rating _____

BREAKOUT COST FOR TAX EXEMPT MATERIAL

Material cost is included in base bid above and is for informational purposes.

@ _____ Dollars

\$ _____

OSU College of Osteopathic Medicine at the Cherokee Nation

NATIVE AMERICAN CERTIFICATIONS

TERO Certified "Indian Owned Business" with majority owners Cherokee citizens	YES/NO (Please circle)
TERO Certified "Indian Owned Business"	YES/NO (Please circle)
"Major Cherokee Employer" as certified by TERO	YES/NO (Please circle)

LABOR RATES		
DESCRIPTION (All rates are inclusive of overhead and profit)	UNIT	UNIT COST
Foreman labor rate – fully burdened (includes vehicles, tools, etc.)	Per HR	
Journeyman labor rate – fully burdened (includes vehicles, tools, etc.)	Per HR	
Apprentice labor rate – fully burdened (includes vehicles, tools, etc.)	Per HR	

DELINEATION OF NATIVE AMERICAN PARTICIPATION			
	COMPANY	TRADE	TERO CERTIFIED (YES or NO)
1-			
2-			
3-			
4-			
5-			
USE THIS AREA FOR ADDITIONAL COMMENTS REGARDING THE USE OF NATIVE AMERICAN COMPANIES OR THE EMPLOYMENT OF NATIVE AMERICANS:			

Company: _____
 Contact Name: _____
 Phone: _____
 Email: _____
 Fax: _____