



AIA[®]

Document G710™ – 2017

Architect's Supplemental Instructions

PROJECT: *(name and address)*

Wilma P. Mankiller Health Center
Expansion
Stilwell, OK

CONTRACT INFORMATION:

Contract For: CMAR

Date:

ASI INFORMATION:

ASI Number: Bid Package 02 ASI 006

Date: 08-14-20

OWNER: *(name and address)*

Cherokee Nation Property
Management,
LLC.

ARCHITECT: *(name and address)*

James R. Childers Architect, Inc.

45 South 4th Street
Fort Smith, Ar 72901

CONTRACTOR: *(name and address)*

M. Ross, Inc.

The Contractor shall carry out the Work in accordance with the following supplemental instructions without change in Contract Sum or Contract Time. Proceeding with the Work in accordance with these instructions indicates your acknowledgment that there will be no change in the Contract Sum or Contract Time.


(Insert a detailed description of the Architect's supplemental instructions and, if applicable, attach or reference specific exhibits.)

See attached narrative

ISSUED BY THE ARCHITECT:

James R. Childers Architect, Inc.

ARCHITECT *(Firm name)*


SIGNATURE

J. Breck Childers, Managing

Principal

PRINTED NAME AND TITLE

08-14-20

DATE

Construction Documents – ASI 06 – Wilma P. Mankiller Health Center Expansion

ARCHITECTURAL DRAWINGS:

A1.12

1. Elevation Tags added

A1.30

1. Section Tags added

A2.03

1. Enlarged Elevations added

A5.10

1. Canopy Edge Detail added

MEP DRAWINGS:

See attached narrative.



5214 W. Village Parkway, Suite 120, Rogers, AR 72758 | 479-899-6370

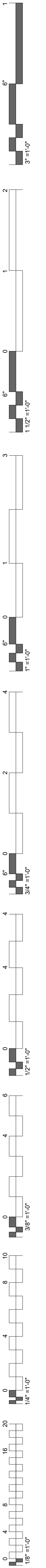
NARRATIVE LETTER

TO: MATTHEW THOMAS– CHILDERS ARCHITECTS
FROM: CALEB SCOLES– HP ENGINEERING, INC.
DATE: 8/13/2020
PROJECT: WPMHC

ELECTRICAL DESIGN ITEMS

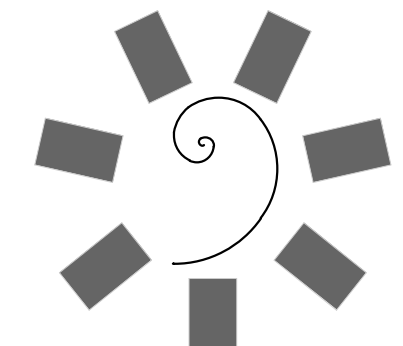
1. E3.01:
 - a. ADDED 150A 4 WIRE FEEDER TO CONNECT FIRE PUMP CONTROLLER TO MSBE
 - b. CHANGED TITLE OF FIRE PUMP CONTROLLER TO INCLUDE ATS
 - c. ADDED NOTES DENOTING 1000A OVERCURRENT MAXIMUM FOR GENERATORS
2. E3.02:
 - a. ADDED 150A BREAKER FOR FIRE PUMP TO MSBE PANEL SCHEDULE

END OF RESPONSES



GENERAL NOTES - FLOOR PLAN

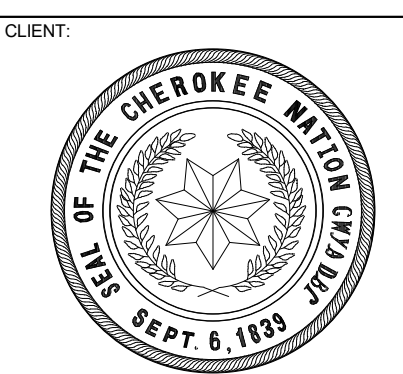
1. INTERIOR DIMENSIONS ARE TO THE FACE OF DRYWALL OR FINISH.
2. ALL EXTERIOR DIMENSIONS ARE TO THE FACE OF EXTERIOR SHEATHING, UNLESS OTHERWISE NOTED.
3. REFER TO SHEET A2 FOR SERIES FOR EXTERIOR ELEVATIONS.
4. REFER TO SHEET A6-01 - A6-02 FOR PARTITION TYPES AND FRAMING DETAILS.
5. REFER TO SHEET A8-10 FOR DOOR SCHEDULE.
6. REFER TO SHEET A8-20 SERIES FOR TOILET & ACCESSORY INFORMATION.
7. REFER TO SHEET A8 SERIES FOR MILLWORK AND INTERIOR ELEVATIONS.



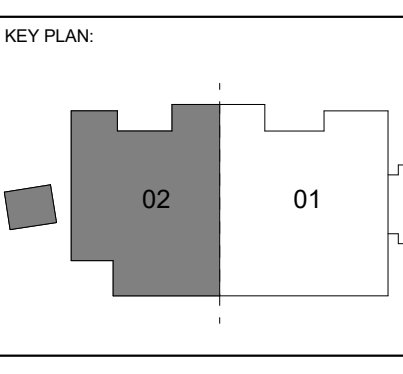
**James R. Childers
Architect, Inc.**
45 South 4th Street
Fort Smith, AR 72901
479-783-2450
www.childersarchitect.com

PROFESSIONAL SEAL:

CONSULTANT LOGO:



**WILMA P. MANKILLER HEALTH CENTER
EXPANSION**
STILWELL, OKLAHOMA



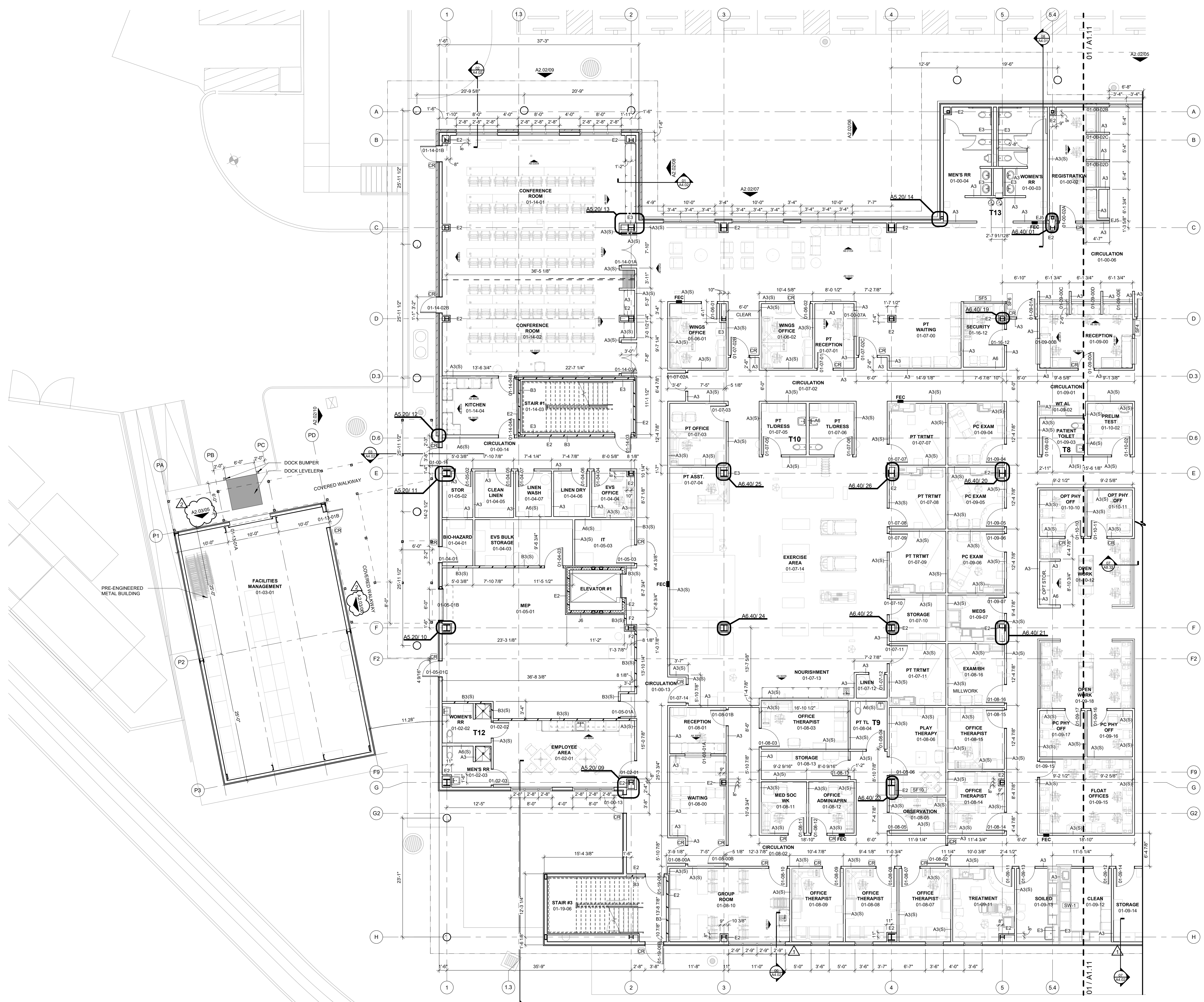
PROJECT PHASE:
BID PACKAGE 02

| # | DATE | REVISIONS / DESCRIPTION |
|---|-----------|-------------------------|
| 1 | 6/5/2019 | BID PACKAGE 02 - ASH 04 |
| 2 | 8/14/2020 | BID PACKAGE 02 - ASH 06 |

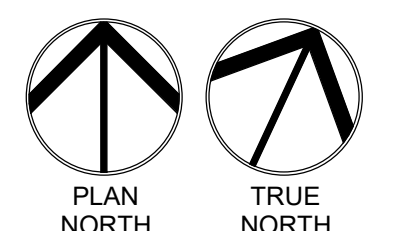
DATE: **12-06-19** JOB NUMBER: **18-01.01**

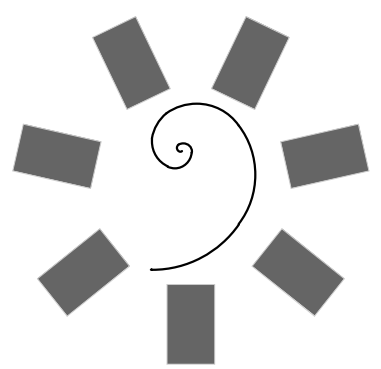
SHEET NUMBER: **A1.12**

FLOOR PLAN LEVEL 01
SECTOR 02



01 FLOOR PLAN LEVEL 01 SECTOR 02
1/8" = 1'-0"



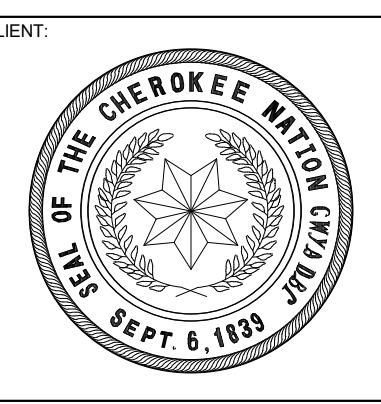


**James R. Childers
Architect, Inc.**
45 South 4th Street
Fort Smith, AR 72901
479-783-2450
www.childersarchitect.com

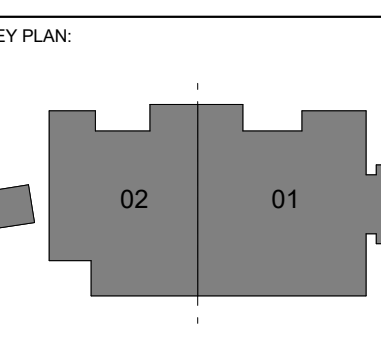
PROFESSIONAL SEAL:

CONSULTANT LOGO:

CLIENT:



**WILMA P. MANKILLER HEALTH CENTER
EXPANSION**
STILWELL, OKLAHOMA



PROJECT PHASE:
BID PACKAGE 02

| # | DATE | REVISIONS | DESCRIPTION |
|---|-----------|-------------------------|-------------|
| 1 | 1/15/20 | BID PACKAGE 02 - ADD 01 | |
| 2 | 8/14/2020 | BID PACKAGE 02 - ASH 06 | |

DATE: 12-06-19 JOB NUMBER: 18-01.01

SHEET NUMBER:
A1.30

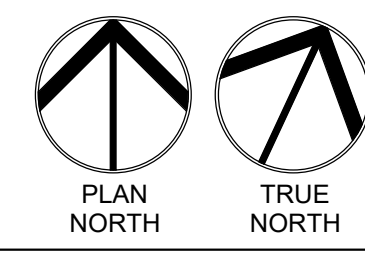
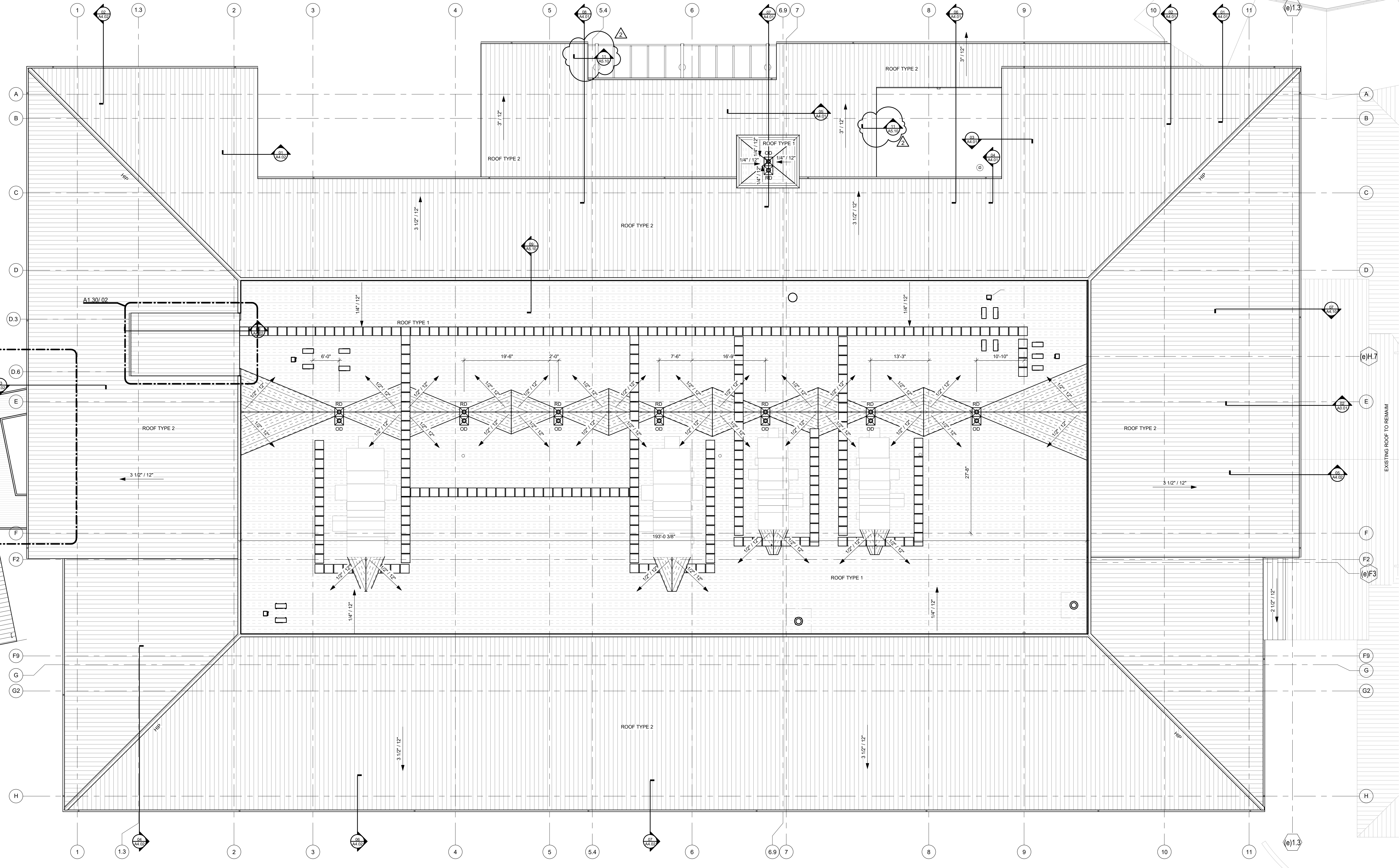
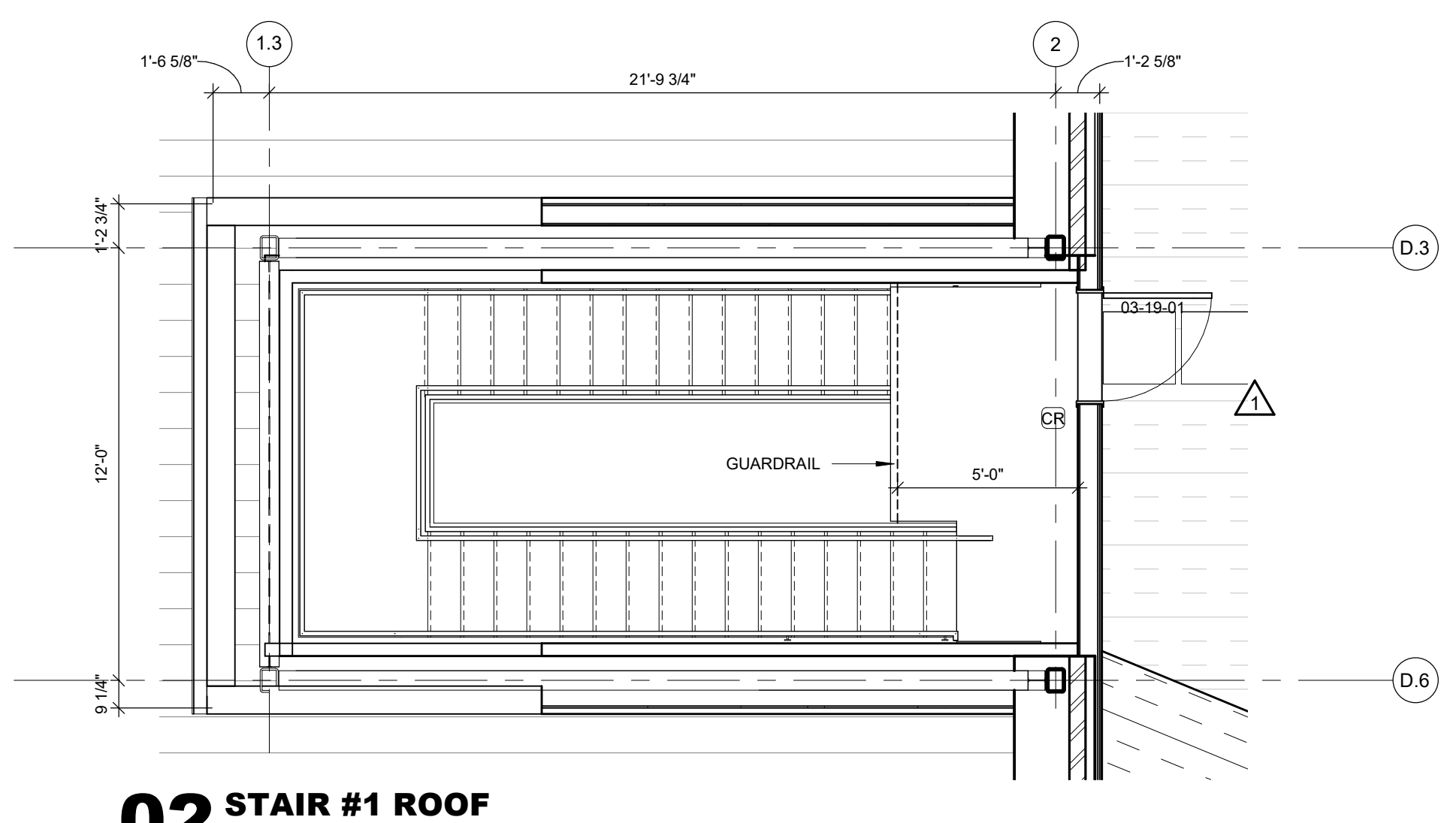
OVERALL ROOF PLAN

ROOF LEGEND

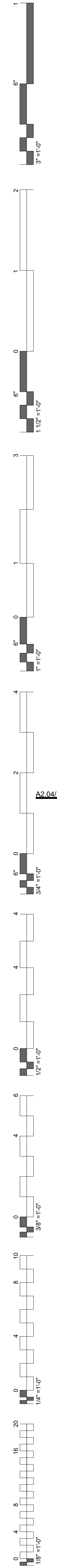
- TAPERED INSULATION
- STANDING SEAM METAL ROOF
- PRE-ENGINEERED CANOPY SYSTEM
- ROOF DRAIN AND OVERFLOW DRAIN
- WALKWAY PROTECTION

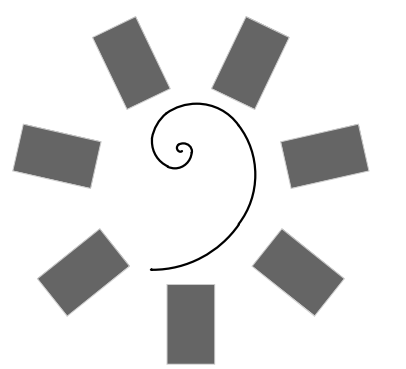
ROOF PLAN GENERAL NOTES

1. ROOF TYPES ARE AS FOLLOWS:
1. ROOF TYPE 1: SINGLE PLY ROOFING
2. ROOF TYPE 2: STANDING SEAM METAL ROOF
3. ROOF TYPE 3: PRE-ENGINEERED ALUMINUM CANOPY
2. ALL ROOFING SURFACES TO SLOPE 1/4" VERTICAL PER 1'-0" HORIZONTAL MINIMUM, UNLESS NOTED OTHERWISE.
3. HATCHING INDICATES AREAS WHERE THE ROOF SLOPE IS ACHIEVED WITH TAPERED INSULATION.
4. TOP OF INSULATION HEIGHTS, HIGH POINTS AND LOW POINTS, ARE INDICATED AS THE TOP OF ROOF SURFACE ABOVE THE ROOF DRAINS. (I.E. +4.5' WHERE HIGH POINT OF ROOF DRAIN SUMP IS +0')
5. ALL ROOF TOP MECHANICAL, ELECTRICAL, AND/OR PLUMBING EQUIPMENT SHOWN FOR INFORMATION ONLY. REFERENCE MECHANICAL, ELECTRICAL, AND PLUMBING DOCUMENTS AND SPECIFICATIONS FOR SPECIFIC DESIGN INFORMATION.
6. PROVIDE WALKWAY PROTECTION TO MAJOR MECHANICAL, ELECTRICAL, AND PLUMBING EQUIPMENT AS REQUIRED TO PROVIDE SERVICE ACCESS. WALKWAY PROTECTION IS INDICATED AS A GENERAL LAYOUT AND MAY NOT SHOW ALL FINAL LOCATIONS OF ALL EQUIPMENT.
7. EXISTING ROOFS TO REMAIN, UNLESS NOTED OTHERWISE.
8. REFERENCE DEMOLITION PLANS, SECTIONS.
9. PATCH AND REPAIR EXISTING ROOFS DAMAGED DURING CONSTRUCTION.



01 OVERALL ROOF PLAN
1" = 10'-0"

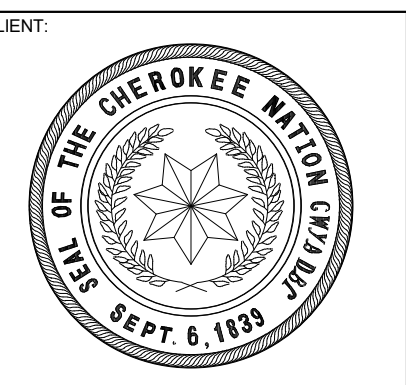




James R. Childers
Architect, Inc.
45 South 4th Street
Fort Smith, AR 72901
479-783-2450
www.childersarchitect.com

PROFESSIONAL SEAL:

CONSULTANT LOGO:



CLIENT:

**WILMA P. MANKILLER HEALTH CENTER
EXPANSION**
STILWELL, OKLAHOMA

KEY PLAN:

PROJECT PHASE: BID PACKAGE 02

| # | DATE | REVISIONS | DESCRIPTION |
|---|-----------|-------------------------|-------------|
| 1 | 1/15/20 | BID PACKAGE 02 - ADD 01 | |
| 2 | 8/14/2020 | BID PACKAGE 02 - ASH 06 | |

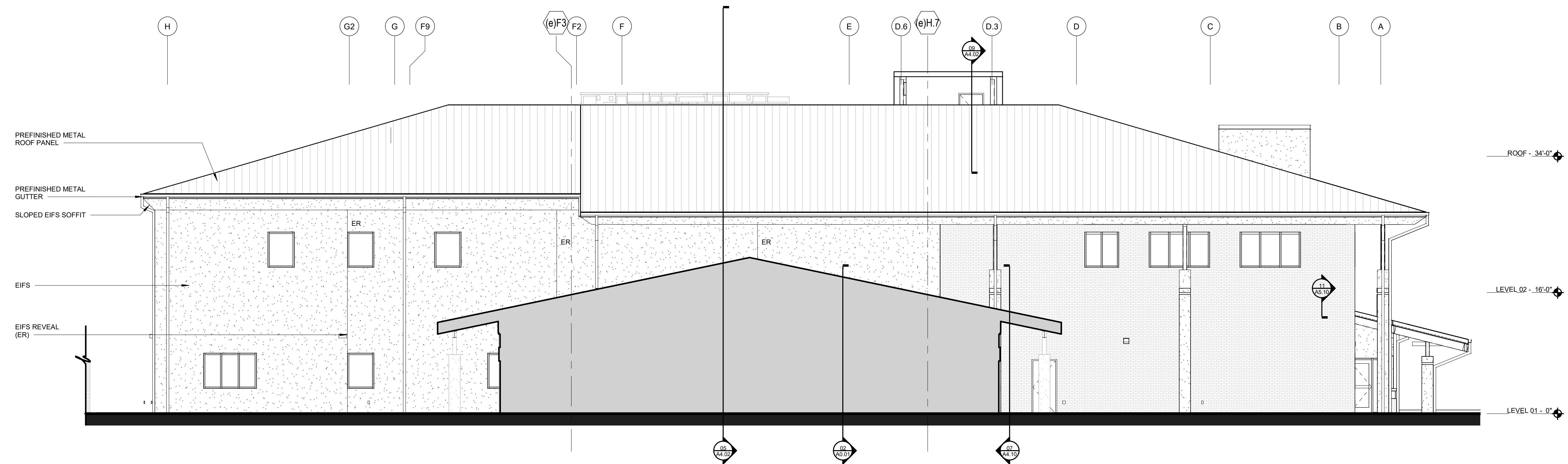
DATE: 12-06-19 JOB NUMBER: 18-01.01

SHEET NUMBER: A2.03

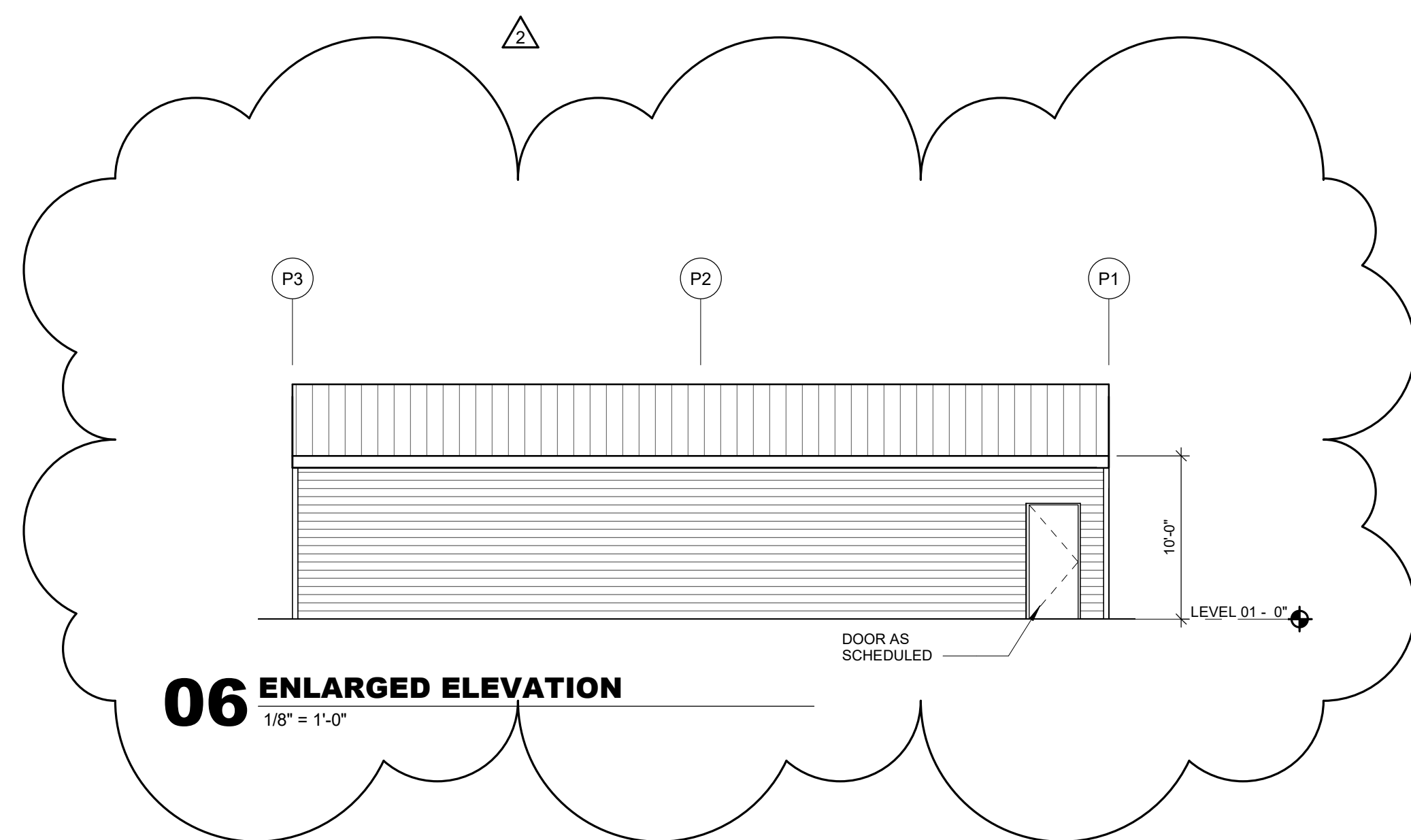
ENLARGED EXTERIOR ELEVATIONS

MATERIAL LEGEND

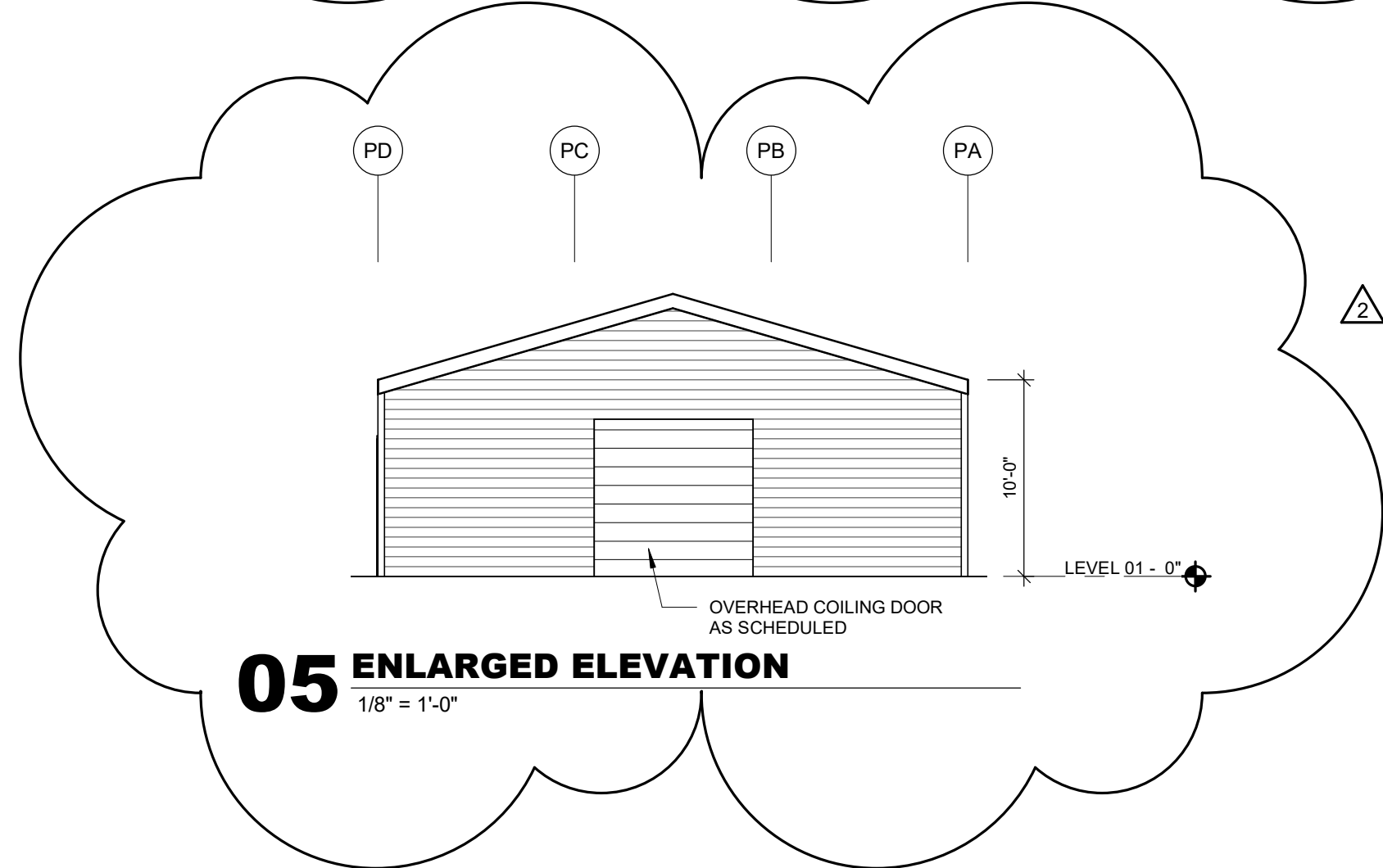
- BRICK VENEER
- EIFS SYSTEM
- TINTED INSULATED GLAZING



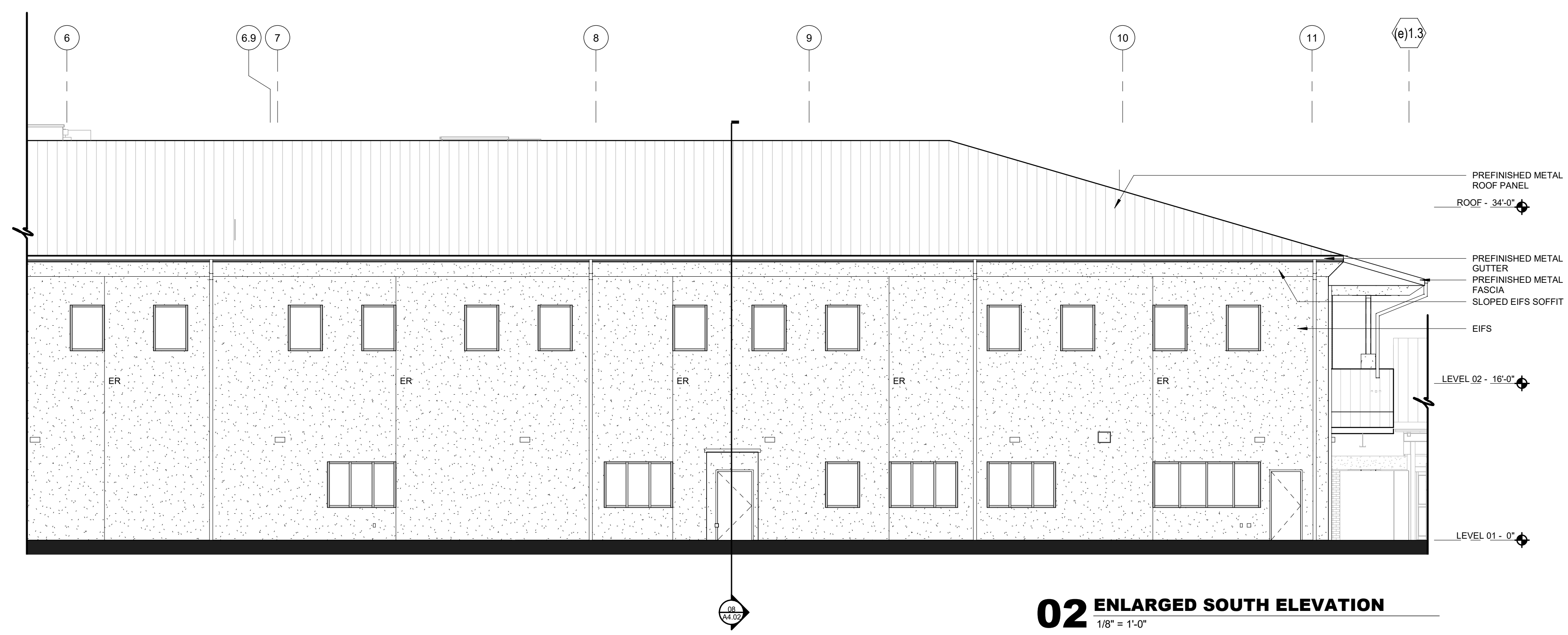
03 ENLARGED EAST ELEVATION
1/8" = 1'-0"



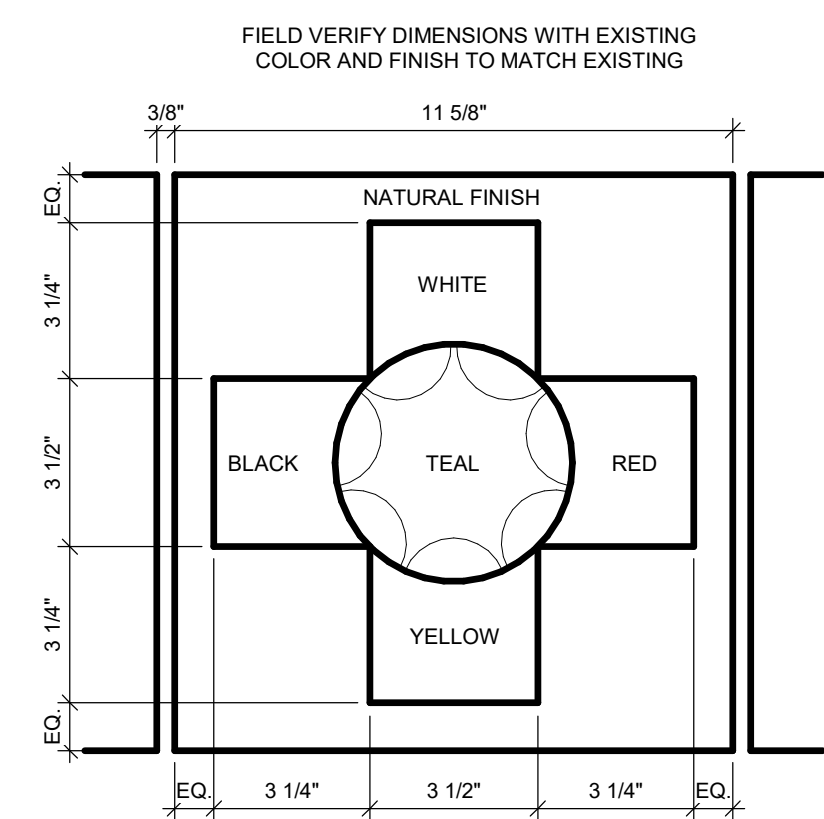
06 ENLARGED ELEVATION
1/8" = 1'-0"



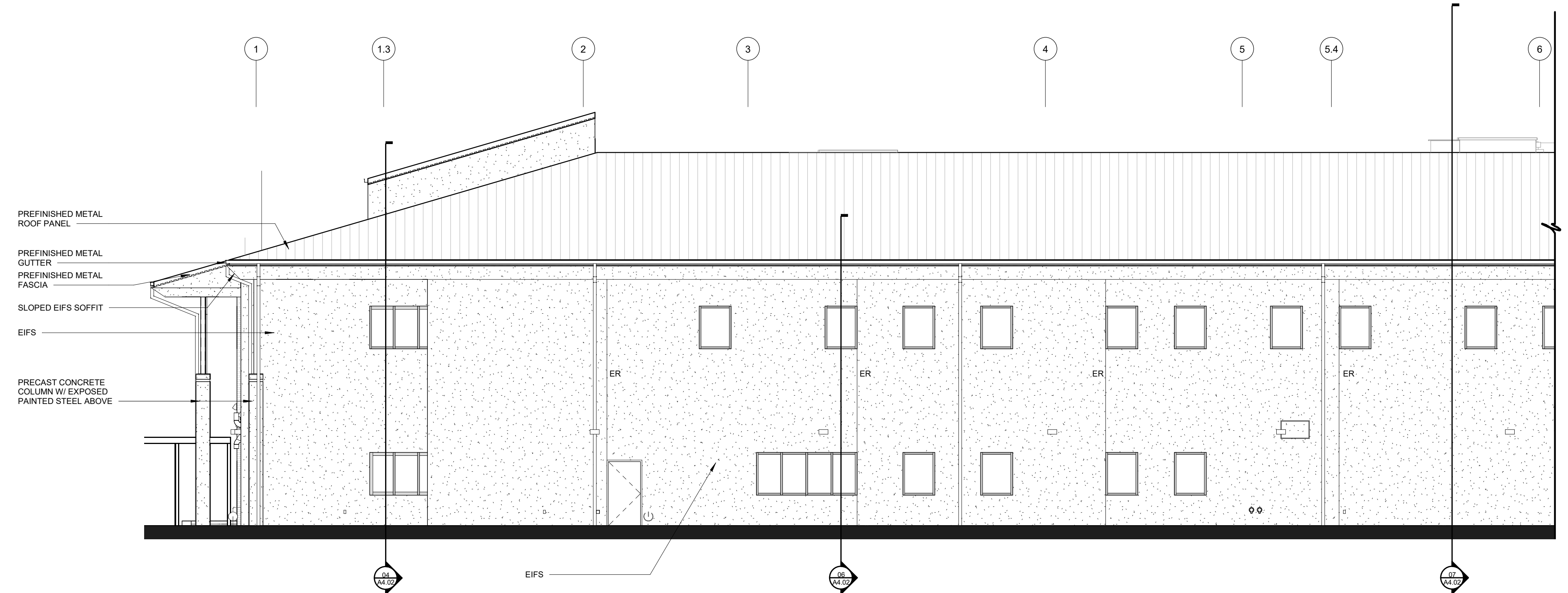
05 ENLARGED ELEVATION
1/8" = 1'-0"



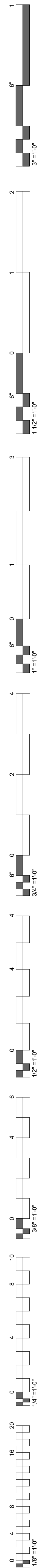
02 ENLARGED SOUTH ELEVATION
1/8" = 1'-0"

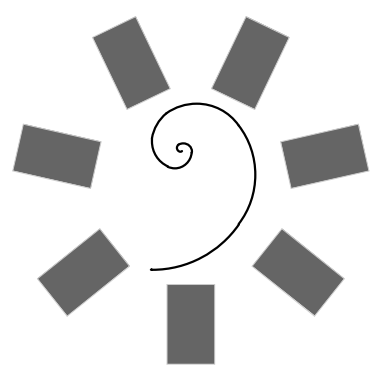


04 PRECAST PANEL DETAIL
3" = 1'-0"



01 ENLARGED SOUTH ELEVATION
1/8" = 1'-0"

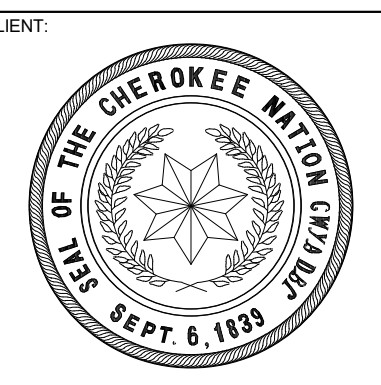




James R. Childers
Architect, Inc.
45 South 4th Street
Fort Smith, AR 72901
479-783-2450
www.childersarchitect.com

PROFESSIONAL SEAL

CONSULTANT LOGO



CLIENT

**WILMA P. MANKILLER HEALTH CENTER
EXPANSION**
STILWELL, OKLAHOMA

KEY PLAN

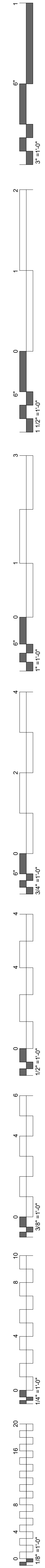
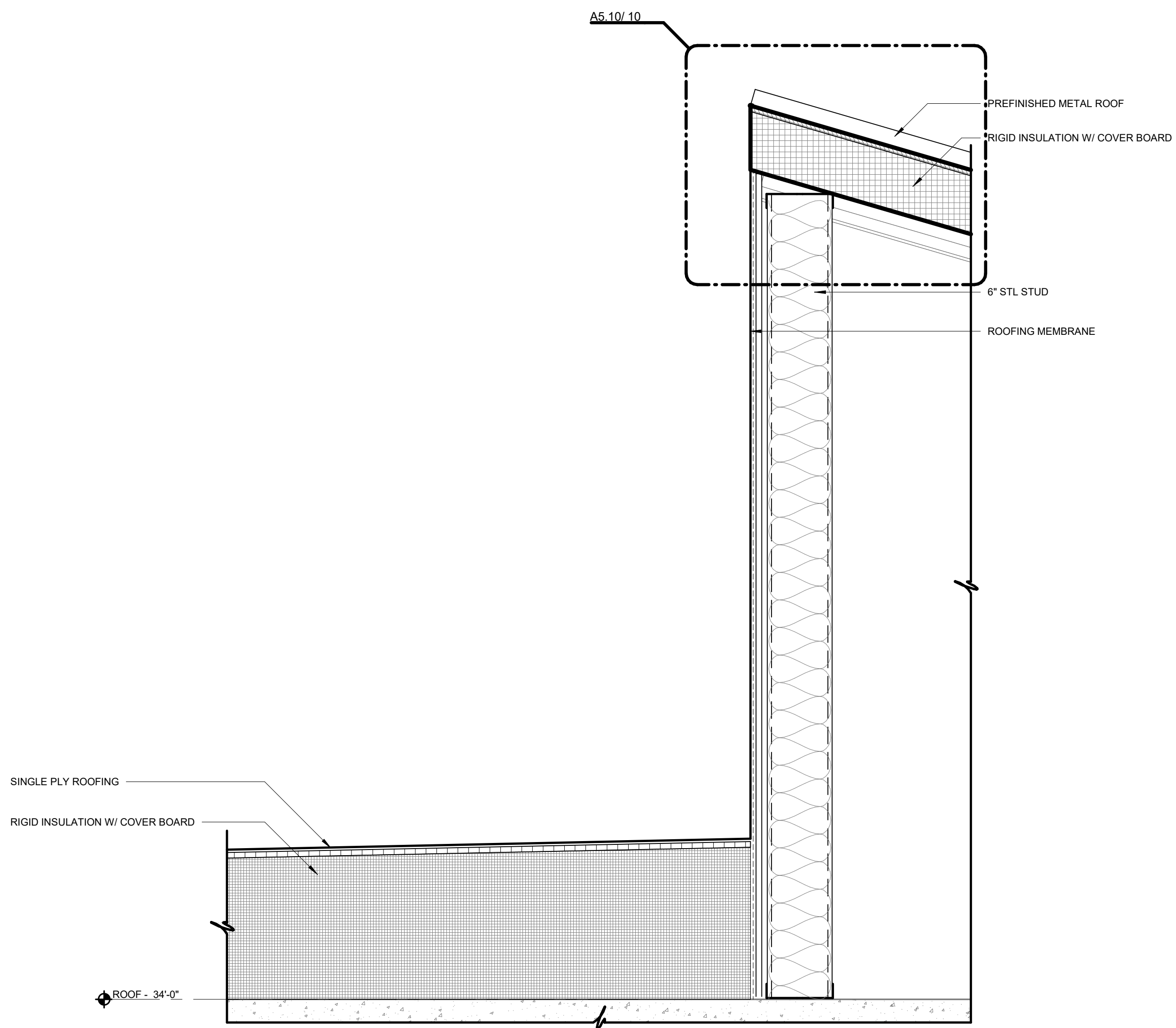
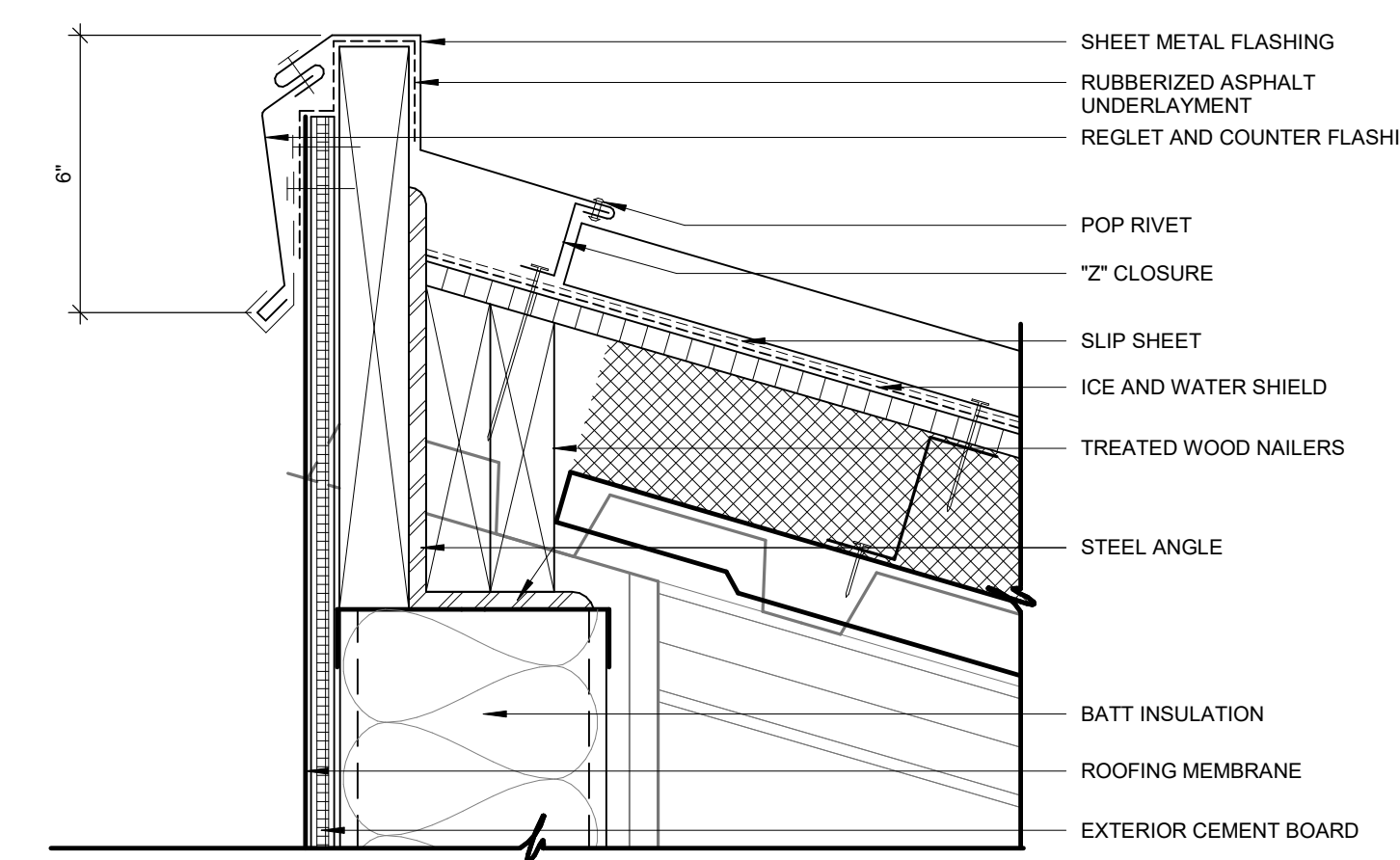
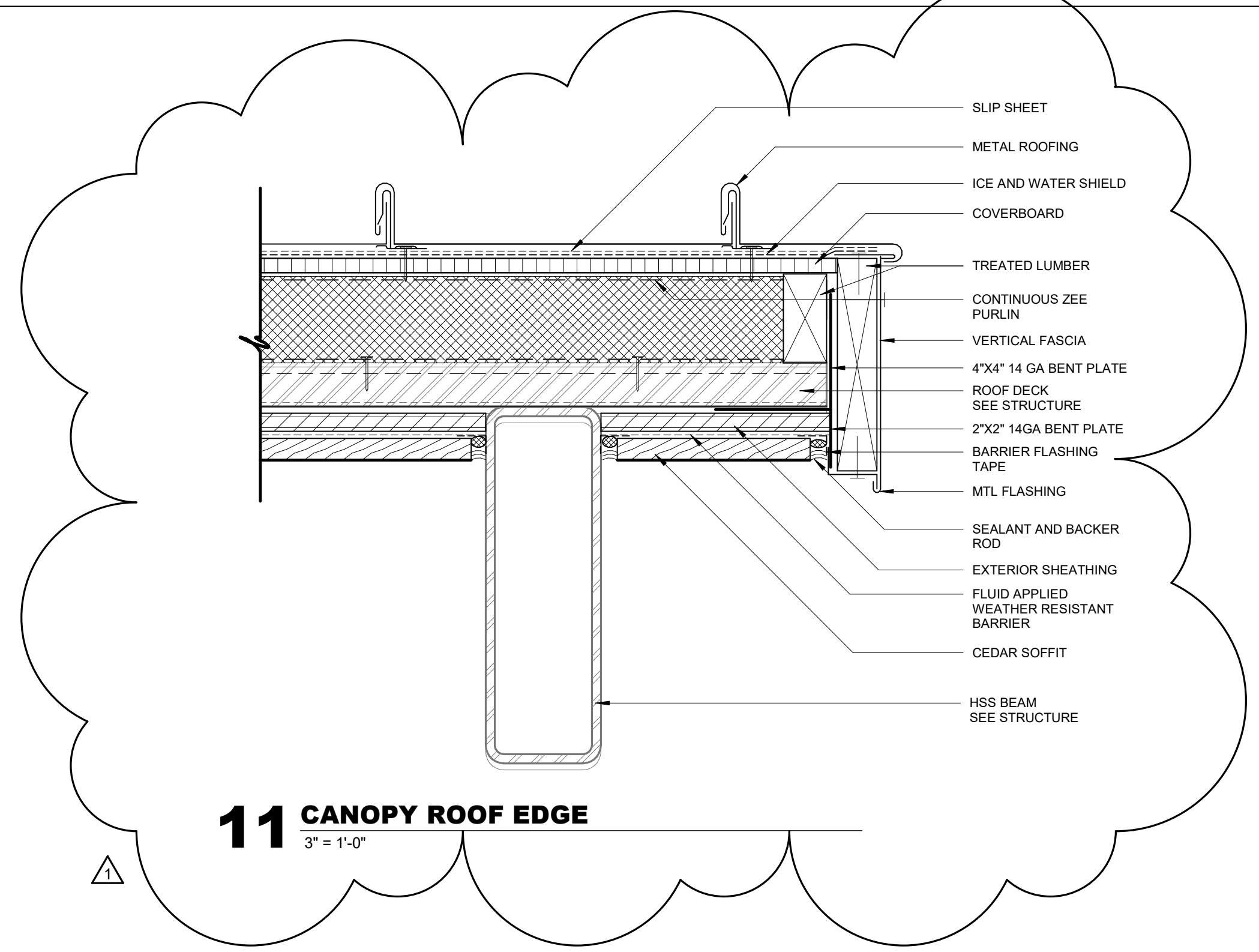
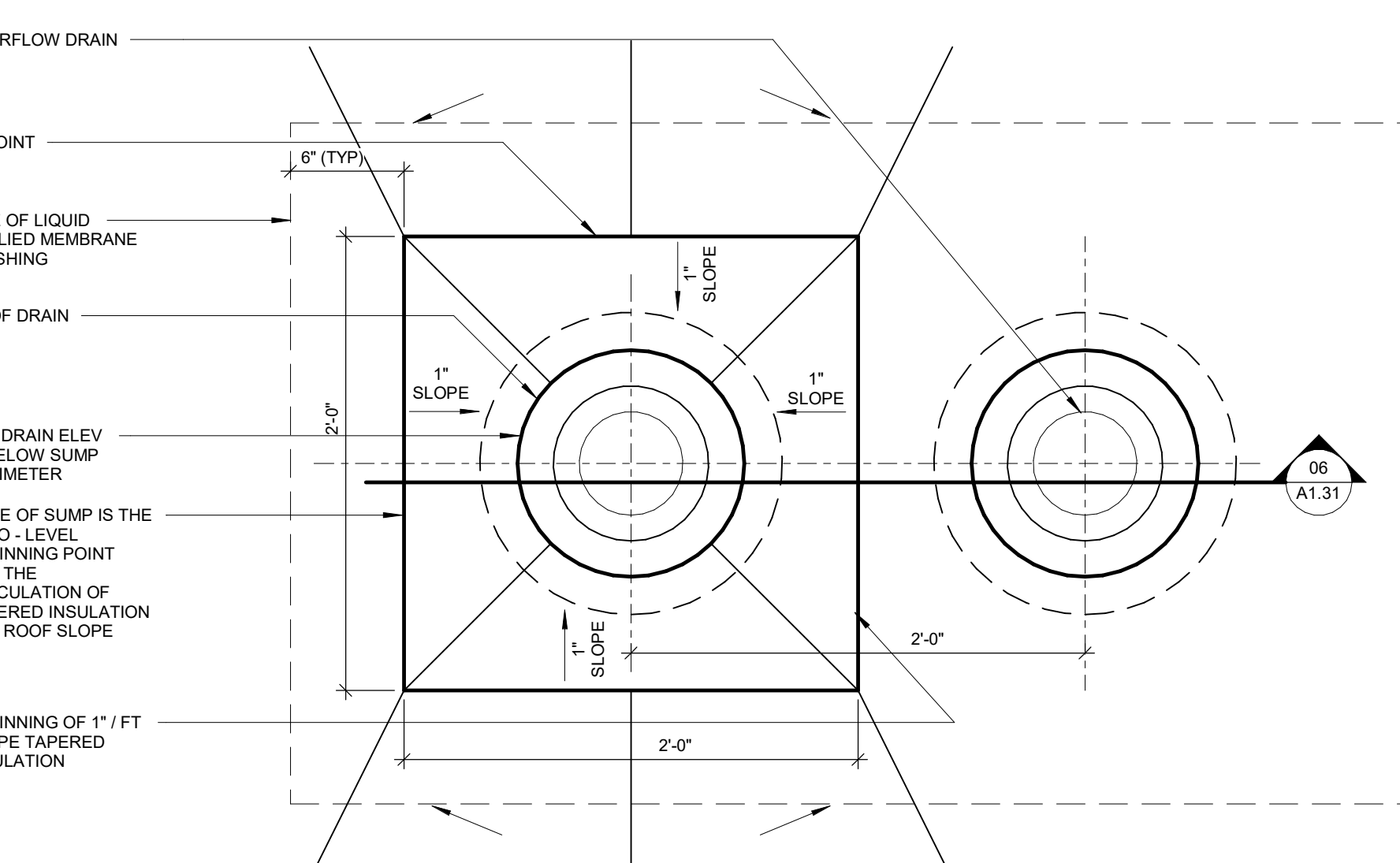
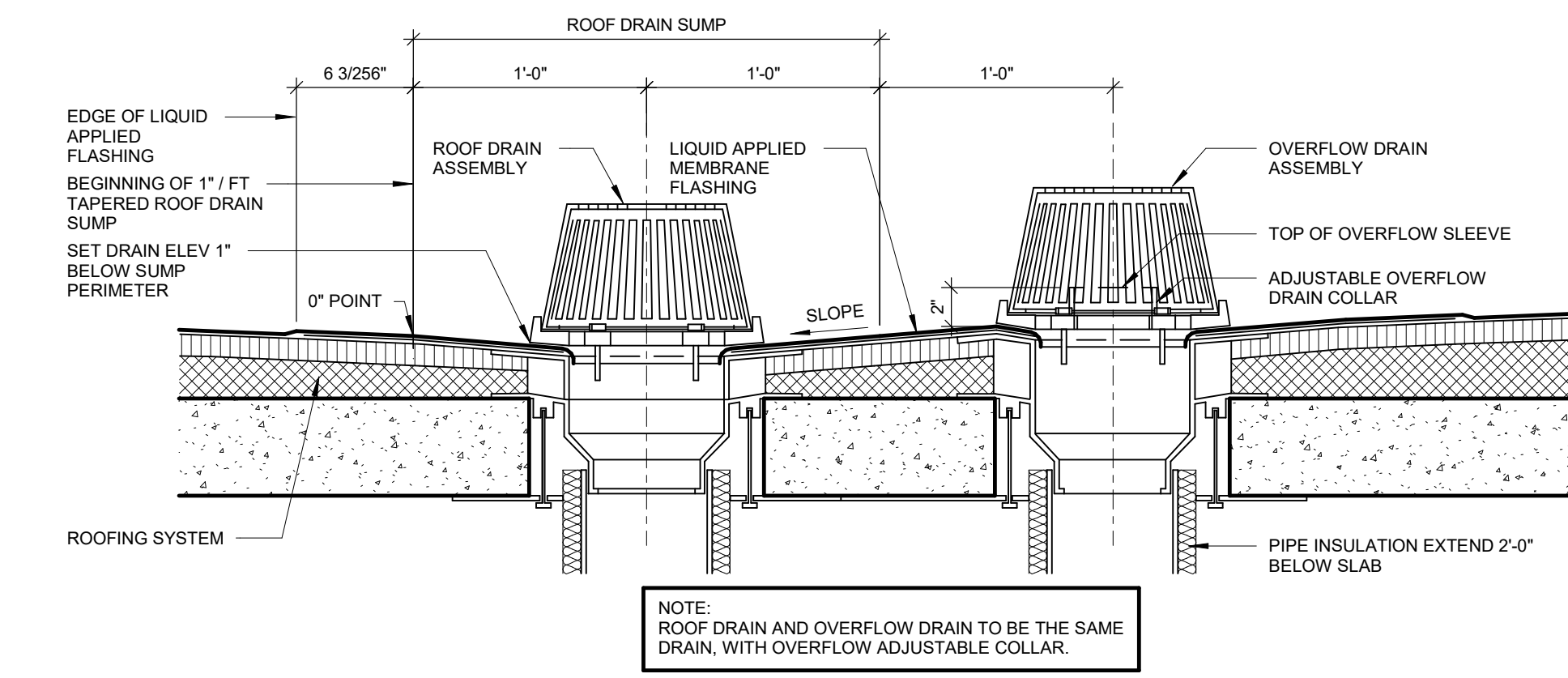
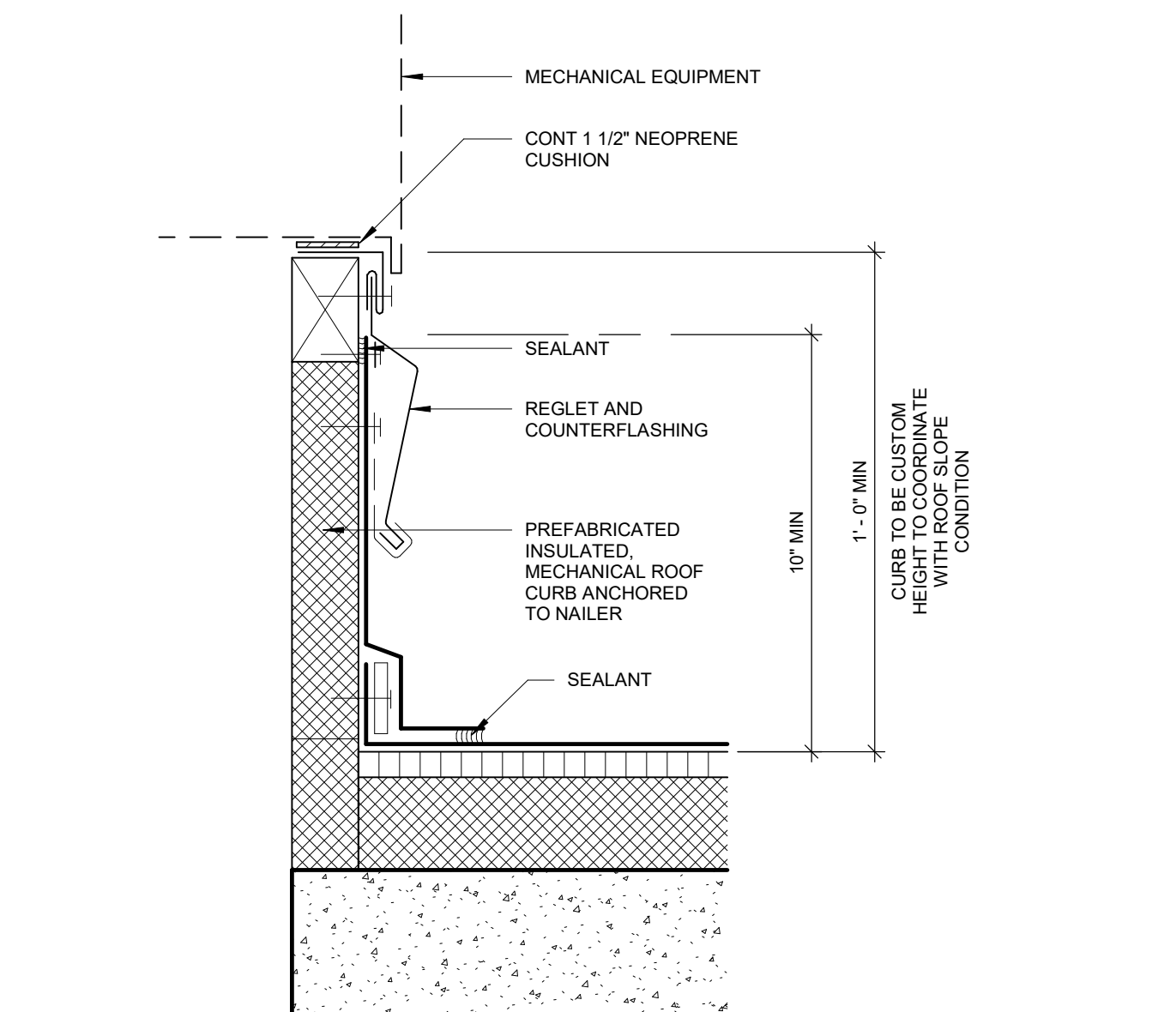
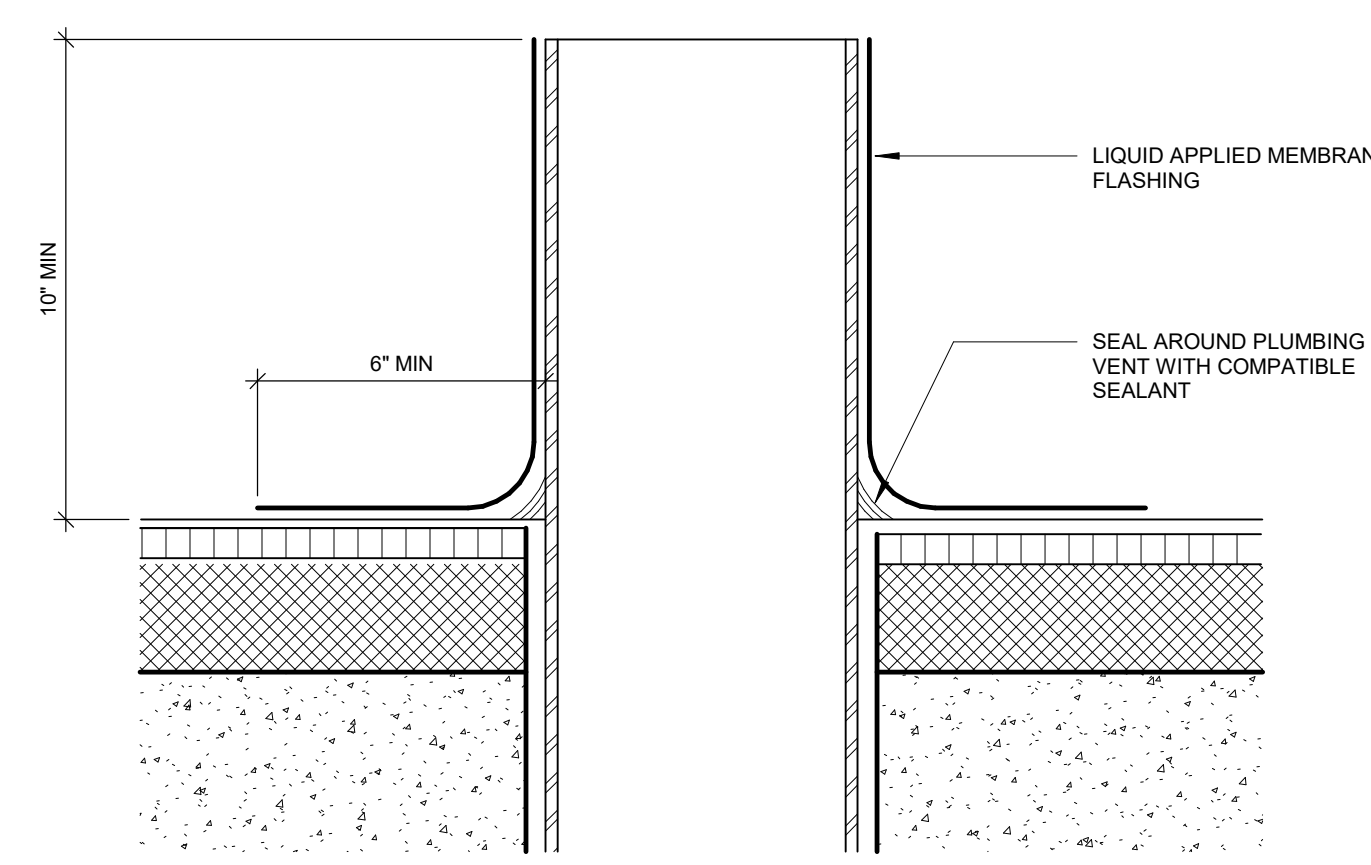
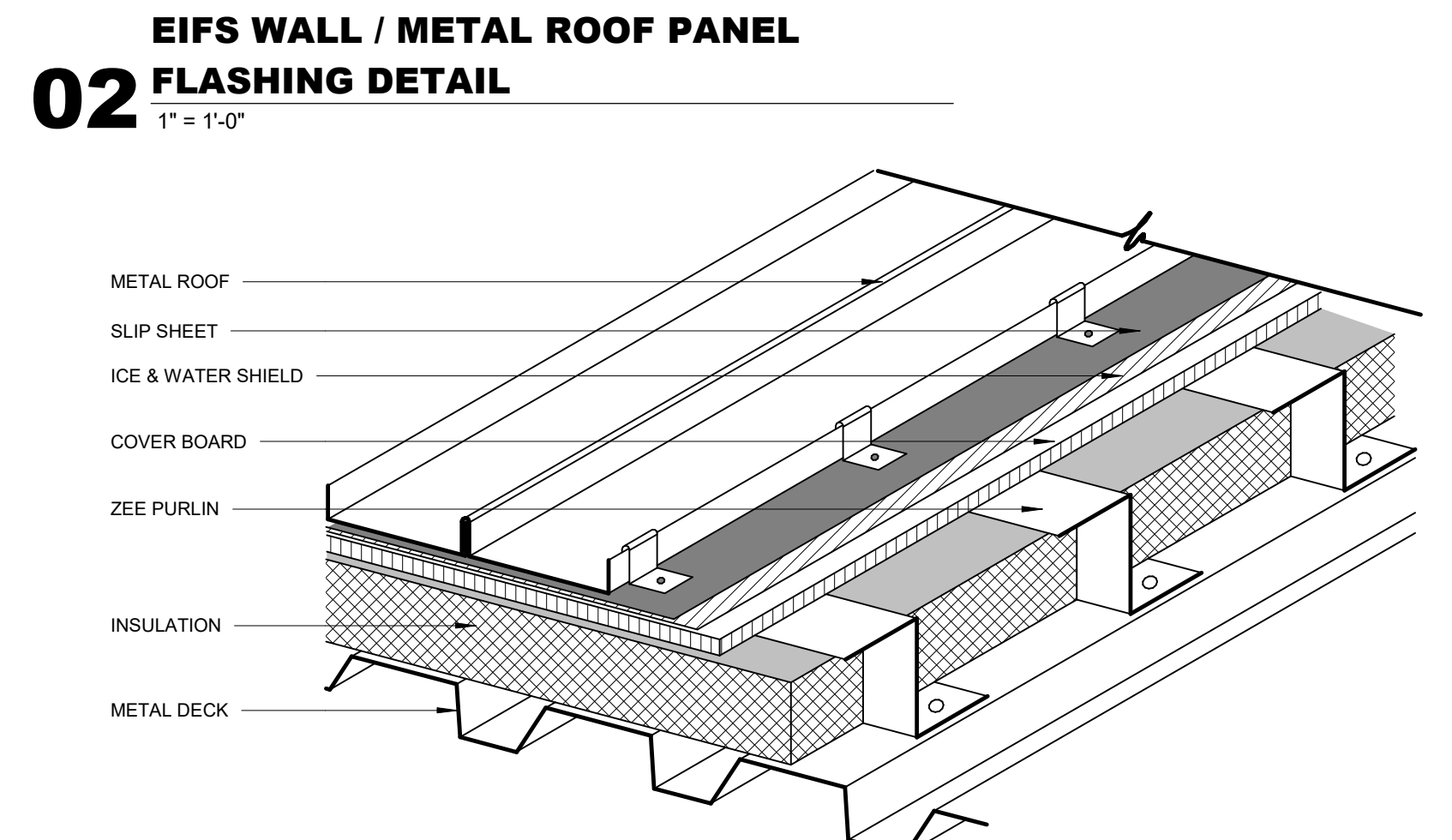
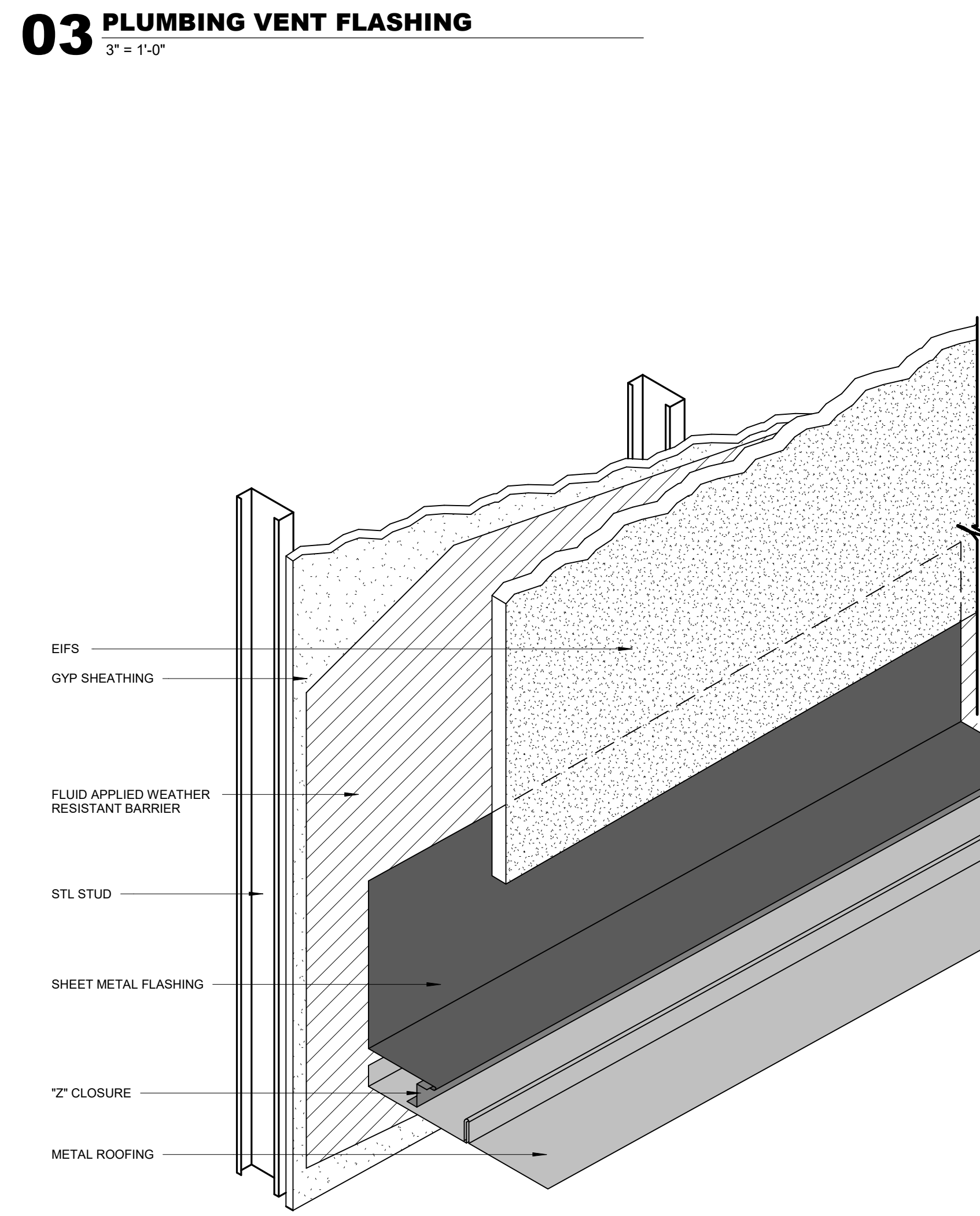
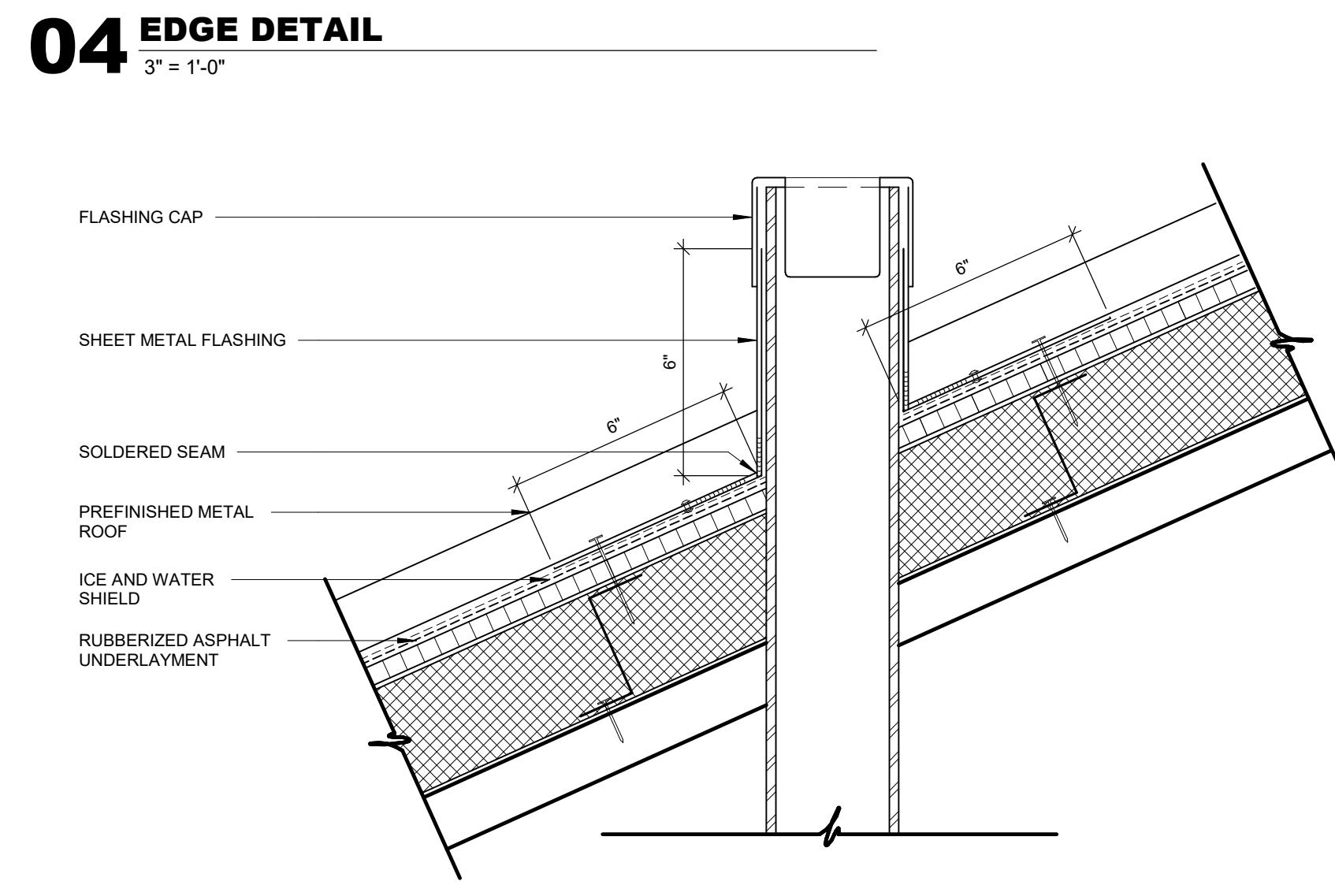
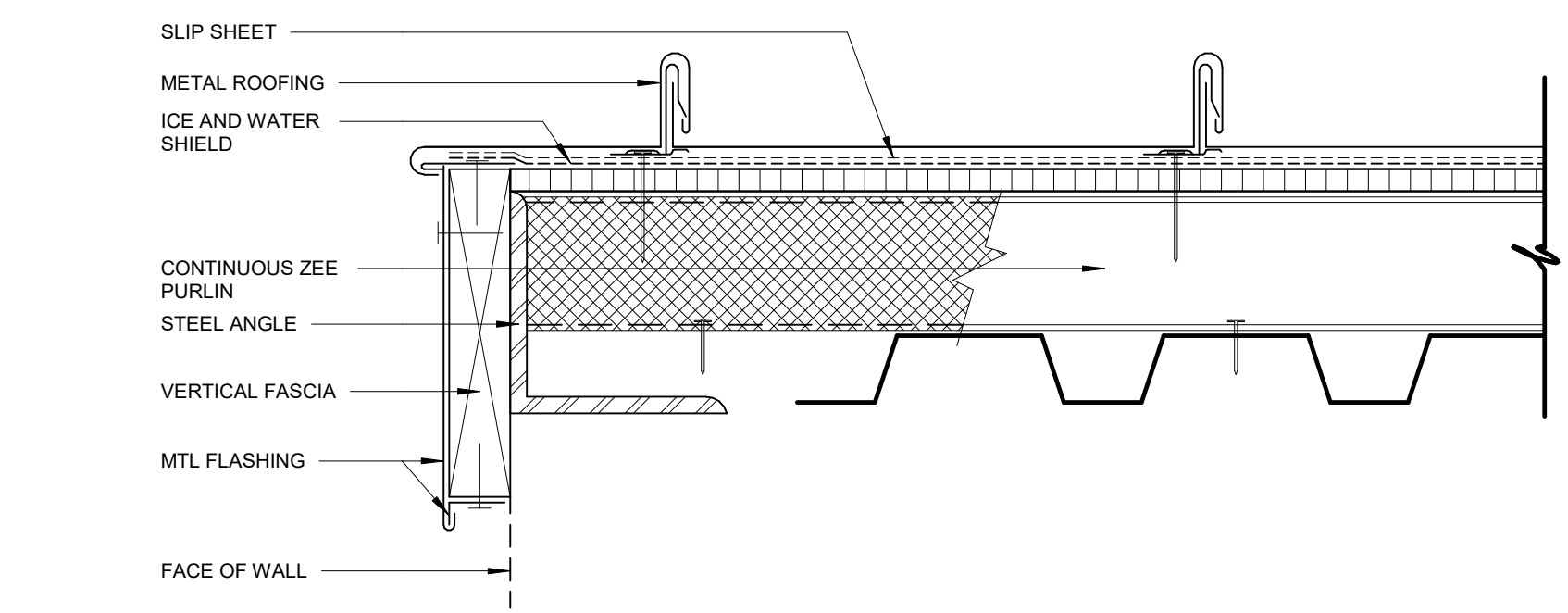
PROJECT PHASE
BID PACKAGE 02

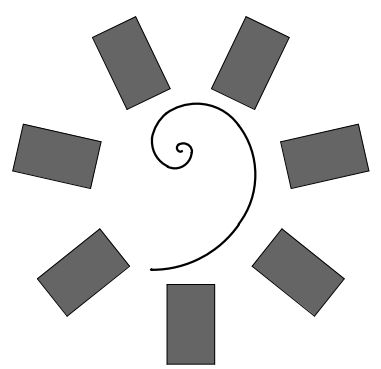
| # | DATE | REVISIONS | DESCRIPTION |
|---|-----------|-------------------------|-------------|
| 1 | 8/14/2019 | BID PACKAGE 02 - ASI 06 | |

DATE: 12-06-19 JOB NUMBER: 18-01.01

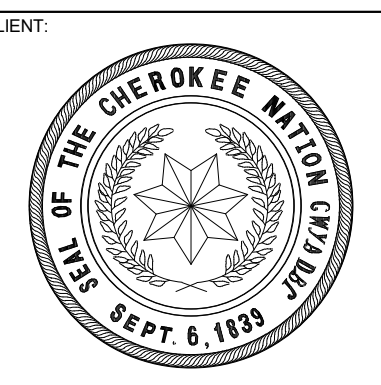
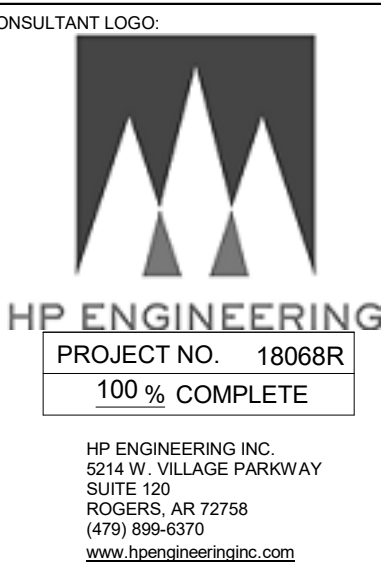
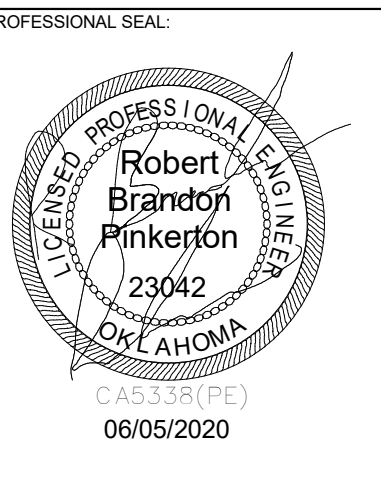
SHEET NUMBER: A5.10

ROOF DETAILS





James R. Childers
Architect, Inc.
45 South 4th Street
Fort Smith, AR 72901
479-783-2450
www.childersarchitect.com



**WILMA P. MANKILLER HEALTH CENTER
EXPANSION**
STILWELL, OKLAHOMA

KEY PLAN

PROJECT PHASE
BID PACKAGE 02

| # | DATE | REVISIONS | DESCRIPTION |
|---|----------|-------------------------|-------------|
| 1 | 1/15/20 | BID PACKAGE 02 - ADD 01 | |
| 2 | 3/26/20 | BID PACKAGE 02 - ADD 01 | |
| 3 | 08/12/20 | BID PACKAGE 02 - ADD 06 | |

DATE: 12-06-19 JOB NUMBER: 18-01.01

SHEET NUMBER:

E3.01
ELECTRICAL SCHEDULES AND RISER

ELECTRICAL SERVICE NOTES

- THE ELECTRICAL CONTRACTOR SHALL VERIFY ALL SERVICE AND METERING REQUIREMENTS WITH THE UTILITY COMPANY PRIOR TO BID AND SHALL BE RESPONSIBLE FOR PROVIDING AND INSTALLING ALL MATERIALS AS REQUIRED BY THE SERVING UTILITY AS WELL AS COST INCURRED BY SERVING UTILITY.
- THE ELECTRICAL CONTRACTOR SHALL VERIFY THE FAULT CURRENT AT THE SECONDARY OF THE TRANSFORMER WITH THE UTILITY COMPANY AND ADJUST THE ELECTRICAL PANEL AIC RATINGS TO THE NEXT HIGHER STANDARD RATING.
- ALUMINUM SERVICE CONDUCTORS ARE NOT RECOMMENDED AND SHOULD ONLY BE USED WHERE ABSOLUTELY NECESSARY OR REQUIRED BY THE OWNER. CONTRACTOR TO CONTACT ENGINEER FOR SIZING. WHERE ALUMINUM CONDUCTORS ARE USED, THE OWNER SHALL PROVIDE ANNUAL MAINTENANCE OF ALL TERMINATIONS TO ENSURE SECURE CONNECTIONS. ALUMINUM WIRE WILL EXPAND AND CONTRACT AND OVER TIME MAY BECOME BRITTLE. THE OWNER SHALL ASSUME RESPONSIBILITY FOR USING ALUMINUM CONDUCTORS WITHOUT PROPER INSTALLATION, CARE, AND MAINTENANCE.
- COORDINATE ALL SERVICE AND METERING DETAILS INCLUDING ANY RELOCATION OF EXISTING UTILITY LINES WITH POWER COMPANY.
- CONTRACTOR TO CONFIRM EXACT LOCATION OF METERS WITH ELECTRIC UTILITY.
- PAY ANY POWER COMPANY FEES CHARGED TO OWNER FOR SERVICE AND UTILITY LINE WORK ASSOCIATED WITH THIS PROJECT. THESE COSTS SHALL BE INCLUDED IN BIDS.
- FURNISH AND INSTALL MATERIALS FOR A TEMPORARY CONSTRUCTION SERVICE AS REQUIRED.
- FURNISH AND/OR INSTALL ALL REQUIRED MATERIAL AND LABOR IN COMPLIANCE WITH POWER COMPANY REQUIREMENTS TO PROVIDE A COMPLETE ELECTRICAL SERVICE, INCLUDING TRENCHING AND BACK FILLING, PRIMARY CONDUIT, CONCRETE TRANSFORMER PAD, SECONDARY CONDUITS AND CABLES, C.T. CABINET, METERING AND GROUNDING SYSTEM.

SWITCHGEAR LABEL

THE MAIN SWITCHBOARD SHALL HAVE A LABEL APPLIED TO WARN OF POTENTIAL SHOCK HAZARDS

WARNING

SHOCK HAZARD EXISTS IF GROUNDING ELECTRODE CONDUCTOR OR BONDING JUMPER CONNECTION IN THIS EQUIPMENT IS REMOVED WHILE ALTERNATE SOURCE(S) IS ENERGIZED.

- NOTES:
- THE MAIN SWITCHBOARD SHALL HAVE A COMMERCIAL PRODUCED PERMANENT LABEL APPLIED, SIMILAR TO THE ABOVE, TO WARN OF POTENTIAL SHOCK HAZARDS, IN ACCORDANCE WITH NEC 702.7 AND NFPA 70E.
 - LABELING MAY BE COMPLETED BY EQUIPMENT MANUFACTURER, EQUIPMENT VENDOR/SUPPLIER, OR THE CONTRACTOR. THE CONTRACTOR SHALL VERIFY THAT ALL SWITCHBOARDS AND PANELBOARDS ARE PROPERLY LABELED IN THE FIELD.

EQUIPMENT LABELS

ALL SWITCHBOARDS AND PANELBOARDS SHALL HAVE A LABEL APPLIED TO WARN OF POTENTIAL ARC FLASH HAZARDS

WARNING

ARC FLASH AND SHOCK HAZARD. APPROPRIATE PERSONAL PROTECTIVE EQUIPMENT (PPE) REQUIRED.

- NOTES:
- ALL SWITCHBOARDS AND PANELBOARDS SHALL HAVE A COMMERCIAL PRODUCED PERMANENT LABEL APPLIED, SIMILAR TO THE ABOVE, TO WARN OF POTENTIAL ARC FLASH HAZARDS, IN ACCORDANCE WITH NEC 110.16 AND NFPA 70E.
 - LABELING MAY BE COMPLETED BY EQUIPMENT MANUFACTURER, EQUIPMENT VENDOR/SUPPLIER, OR THE CONTRACTOR. THE CONTRACTOR SHALL VERIFY THAT ALL SWITCHBOARDS AND PANELBOARDS ARE PROPERLY LABELED IN THE FIELD.

FAULT CURRENT

| DEVICE NAME | FAULT CURRENT |
|-------------|---------------|
| UTILITY | 50117 |
| MSBN | 50055 |
| MSBE | 50055 |
| ATS1 | 48551 |
| ATS2 | 37797 |
| MDP1 | 44784 |
| H1 | 35780 |
| H2 | 34068 |
| T1 | 39429 |
| T2 | 4990 |
| T3 | 12977 |
| T4 | 25572 |
| L1A | 10960 |
| L1B | 10960 |
| F1A | 2737 |
| L2A | 3259 |
| L2B | 3236 |
| L3A | 6453 |
| L3B | 6417 |
| L4A | 6828 |
| L4B | 6828 |
| FIRE PUMP | 13,043 |
| HE1 | 211921 |
| HE2 | 4235 |
| HE3 | 4103 |
| HE4 | 11767 |
| CHILLER 1 | 26440 |
| CHILLER 2 | 26440 |
| AHU-1 | 16444 |
| AHU-2 | 5400 |
| AHU-3 | 9117 |
| AHU-4 | 4087 |
| ATS-3 | 25,724 |

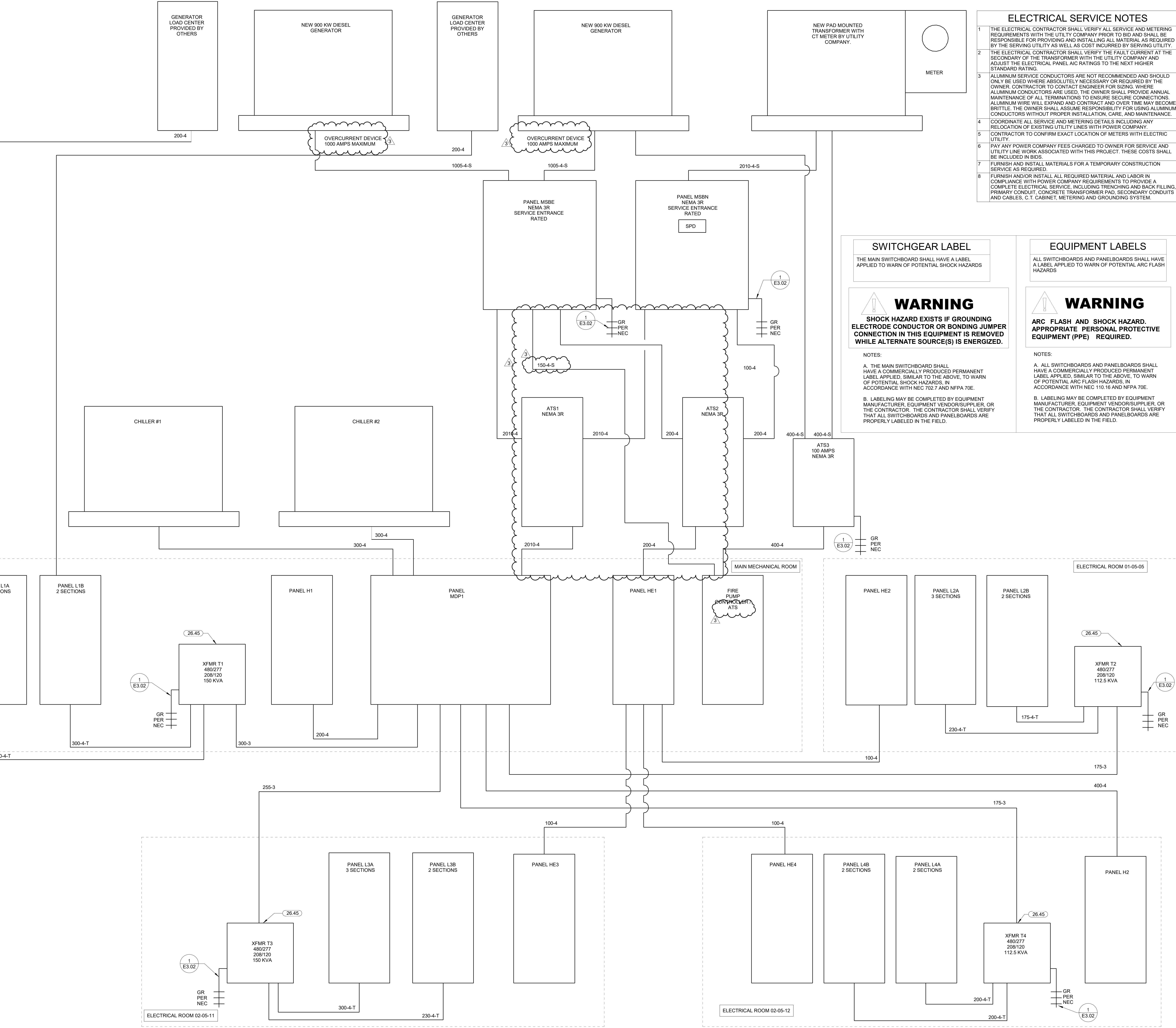
KEYNOTES

| Key Value | Keynote Text |
|-----------|--|
| 26.45 | SUPPLY TRANSFORMER WITH A PERMANENT PLACARD INDICATING SUPPLY CIRCUIT AND LOCATION OF DISCONNECTING MEANS. |

- CONDUIT SIZED BASED ON CONDUCTOR PROPERTIES LISTED IN THE CURRENT NEC EDITION, CHAPTER 9, TABLES 5 AND 5A, AND CONDUIT AREAS LISTED CHAPTER 9, TABLE 4 FOR ENT WITH 40% FILL. OTHER CONDITIONS MAY REQUIRE A LARGER CONDUIT, SUCH AS UNDERGROUND PVC, SIZED FOR NEC.
- GROUND SIZES: EQUIPMENT GROUNDING CONDUCTOR BASED ON NEC TABLE 250.122 - COPPER / GROUNDING ELECTRODE CONDUCTOR BASED ON NEC TABLE 250.66 - COPPER
- CONDUCTOR SIZES BASED ON NEC TABLE 310.15 - COPPER 75°C.

ELECTRICAL FEEDER KEYNOTES

| | |
|-----------|---------------------------------------|
| 65-4 | 1" C, 4#6, 1#10 GR |
| 100-4 | 1 - 1 1/4" C, 4#5, 1#8 GR |
| 175-3 | 1 - 1 1/2" C, 3#2/0, 1#6 GR |
| 175-4SC | 2" CONDUIT |
| 175-4-T | 2" C, #2/0, 1#4 GR |
| 200-4 | 2" C, #3/0, 1#6 GR |
| 200-4C | 2" CONDUIT |
| 200-4-T | 2" C, #3/0, 1#4 GR |
| 230-4C | 1 - 2 1/2" CONDUIT |
| 230-4-T | 1 - 2 1/2" C, 4#4/0, 1#2 GR |
| 255-3 | 2" C, 3-250KCMIL, 1#4 GR |
| 300-3 | 2 - 1 1/2" C, 3#1/0, 1#4 GR EACH |
| 300-4 | 2 - 2" C, 4#1/0, 1#4 GR EACH |
| 300-4C | 2 - 2" CONDUITS |
| 300-4-T | 2 - 2" C, 4#1/0, 1#2 GR EACH |
| 400-4 | 2 - 2" C, 4#3/0, 1#3 GR EACH |
| 400-4C | 2 - 2" CONDUITS |
| 400-4-S | 2 - 2" C, 4#3/0 EACH |
| 620-4C | 2 - 2 1/2" CONDUITS |
| 1005-4C | 3 - 4" CONDUIT |
| 1005-4-S | 3 - 3" C, 4-400KCMIL EACH |
| 1240-4C | 4 - 3" CONDUITS |
| 2010-4 | 6 - 3" C, 4-400KCMIL, 1-250KCMIL EACH |
| 150-4-S | 6 - 3" C, 4-400KCMIL, 1-250KCMIL EACH |
| 2010-4-S | 6 - 3" C, 4-400KCMIL EACH |
| 2010-4-SC | 6 - 3" CONDUITS |



SWITCHBRD: MDP1

NEW

Location: MEP 01-05-01
Supply From: ATS1
Mounting: SURFACE
Enclosure: NEMA 1

Volts: 480/277 Wye
Phases: 3
Wires: 4

A.I.C. Rating: (7) FULLY RATED
Mains Type: MLO
Mains Rating: 2000 A

Notes:

Table with columns: CKT, Load Name, CB, P, Wire, A, B, C, Wire, P, CB, Load Name, CKT. Lists various loads like T-1 (8), CHILLER 1 (8), T-2 (8), H1 (8), etc.

Table with columns: Load Classification, Connected Load, Demand Factor, Estimated Demand, Panel Totals. Lists categories like Hvac, Lighting, Motor, etc.

SWITCHBRD: MSBE

NEW

Location: MECHANICAL YARD
Supply From: GENERATOR
Mounting: SURFACE
Enclosure: NEMA 3R

Volts: 480/277 Wye
Phases: 3
Wires: 4

A.I.C. Rating: (7) FULLY RATED
Mains Type: MLO
Mains Rating: 2000 A

Notes:

Table with columns: CKT, Load Name, CB, P, Wire, A, B, C, Wire, P, CB, Load Name, CKT. Lists loads like ATSS (8), FIRE PUMP CONTROLLER (3.8), 400A SPACE.

Table with columns: Load Classification, Connected Load, Demand Factor, Estimated Demand, Panel Totals. Lists categories like Hvac, Lighting, Motor, etc.

Branch Panel: MSBN

NEW

Location: MECHANICAL YARD
Supply From: UTILITY TRANSFORMER
Mounting: SURFACE
Enclosure: NEMA 3R

Volts: 480/277 Wye
Phases: 3
Wires: 4

A.I.C. Rating: (7) FULLY RATED
Mains Type: MLO
Mains Rating: 2000 A

Notes:

Table with columns: CKT, Load Name, CB, P, Wire, A, B, C, Wire, P, CB, Load Name, CKT. Lists loads like ATSS (8), SPD, 400A SPACE.

Table with columns: Load Classification, Connected Load, Demand Factor, Estimated Demand, Panel Totals. Lists categories like Hvac, Lighting, Motor, etc.

Branch Panel: H1

NEW

Location: MEP 01-05-01
Supply From: MDP1
Mounting: SURFACE
Enclosure: NEMA 1

Volts: 480/277 Wye
Phases: 3
Wires: 4

A.I.C. Rating: (7) FULLY RATED
Mains Type: MLO
Mains Rating: 225 A

Notes:

Table with columns: CKT, Load Name, CB, P, Wire, A, B, C, Wire, P, CB, Load Name, CKT. Lists loads like HWP-1, BP-1, Lighting, etc.

Table with columns: Load Classification, Connected Load, Demand Factor, Estimated Demand, Panel Totals. Lists categories like Lighting, Motor, Power.

Branch Panel: H2

NEW

Location: ELEC 02-05-12
Supply From: MDP1
Mounting: SURFACE
Enclosure: NEMA 1

Volts: 480/277 Wye
Phases: 3
Wires: 4

A.I.C. Rating: (7) FULLY RATED
Mains Type: MLO
Mains Rating: 400 A

Notes:

Table with columns: CKT, Load Name, CB, P, Wire, A, B, C, Wire, P, CB, Load Name, CKT. Lists loads like OPEN OFF LIGHTING, RECEPTION & BREAKROOM, AHU-01 SINGLE POINT, etc.

Table with columns: Load Classification, Connected Load, Demand Factor, Estimated Demand, Panel Totals. Lists categories like Hvac, Lighting, Power.

Branch Panel: HE1

NEW

Location: MEP 01-05-01
Supply From: ATS2
Mounting: SURFACE
Enclosure: NEMA 1

Volts: 480/277 Wye
Phases: 3
Wires: 4

A.I.C. Rating: (7) FULLY RATED
Mains Type: MLO
Mains Rating: 225 A

Notes:

Table with columns: CKT, Load Name, CB, P, Wire, A, B, C, Wire, P, CB, Load Name, CKT. Lists loads like HE2 (8), HE4 (8), EXTERIOR BUILDING LIGHTING, etc.

Table with columns: Load Classification, Connected Load, Demand Factor, Estimated Demand, Panel Totals. Lists categories like Lighting, Power, Lighting - Exterior.

Branch Panel: HE2

NEW

Location: ELEC 01-05-05
Supply From: HE1
Mounting: SURFACE
Enclosure: NEMA 1

Volts: 480/277 Wye
Phases: 3
Wires: 4

A.I.C. Rating: (7) FULLY RATED
Mains Type: MLO
Mains Rating: 100 A

Notes:

Table with columns: CKT, Load Name, CB, P, Wire, A, B, C, Wire, P, CB, Load Name, CKT. Lists loads like SPACE, LOBBY & MEDICAL RECORDS LIGHTING, etc.

Table with columns: Load Classification, Connected Load, Demand Factor, Estimated Demand, Panel Totals. Lists categories like Lighting.

Branch Panel: HE3

NEW

Location: ELEC 02-05-11
Supply From: HE1
Mounting: SURFACE
Enclosure: NEMA 1

Volts: 480/277 Wye
Phases: 3
Wires: 4

A.I.C. Rating: (7) FULLY RATED
Mains Type: MLO
Mains Rating: 100 A

Notes:

Table with columns: CKT, Load Name, CB, P, Wire, A, B, C, Wire, P, CB, Load Name, CKT. Lists loads like EMERGENCY LIGHTING(2), ELEVATOR CONTROL SERVICE, SHUNT-TRIP BREAKER, etc.

Table with columns: Load Classification, Connected Load, Demand Factor, Estimated Demand, Panel Totals. Lists categories like Hvac, Lighting, Power.

Branch Panel: F1A

NEW

Location: MECHANICAL SHOP
Supply From: L1A
Mounting: SURFACE
Enclosure: NEMA 1

Volts: 120/208 Wye
Phases: 3
Wires: 4

A.I.C. Rating: (7) FULLY RATED
Mains Type: MCB
Mains Rating: 60 A

Notes:

Table with columns: CKT, Load Name, CB, P, Wire, A, B, C, Wire, P, CB, Load Name, CKT. Lists loads like OVERHEAD DOOR, MAINTENANCE SHOP RECEPTACLES, etc.

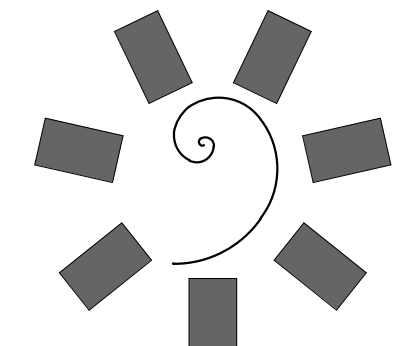
Table with columns: Load Classification, Connected Load, Demand Factor, Estimated Demand, Panel Totals. Lists categories like Hvac, Other, Power, Receptacle.

PANELBOARD NOTES (#)

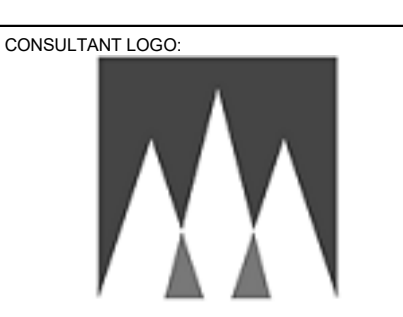
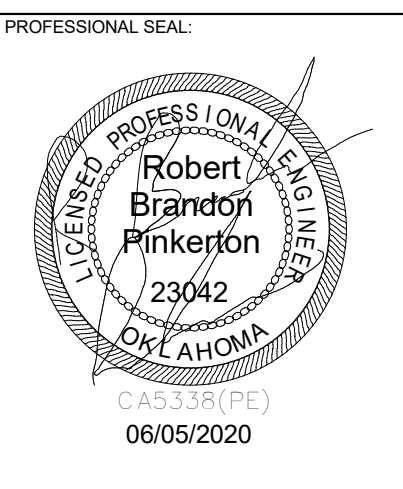
- 1. TERMINATE GROUND ON ISOLATED GROUND BUS.
2. INSTALL LOCKING DEVICE FURNISHED WITH PANELBOARD (LOCK-OFF FOR MAINTENANCE).
3. INSTALL LOCKING DEVICE FURNISHED WITH PANELBOARD (LOCK-ON FOR CRITICAL LOAD).
4. GFI BREAKER FOR PERSONNEL PROTECTION (5mA).
5. GFI BREAKER FOR EQUIPMENT PROTECTION (30mA).
6. CONDUCTOR SIZE SHOWN IN PANEL SCHEDULE HAS BEEN INCREASED FOR VOLTAGE DROP. SIZE EQUIPMENT GROUND PROPORTIONALLY PER NEC.
7. REFERENCE GROUND WIRE SIZING CHART.
8. FACTORY WIRE TO LOAD.
9. REFER TO ONE-LINE DIAGRAM FOR AVAILABLE FAULT CURRENT FOR INTERRUPT RATINGS.
10. THRU CONTROLLER. REFER TO LIGHTING CONTROLLER DETAIL.
11. ADD CIRCUIT BREAKER TO EXISTING PANEL.

EQUIPMENT GROUNDING CONDUCTOR SIZING CHART

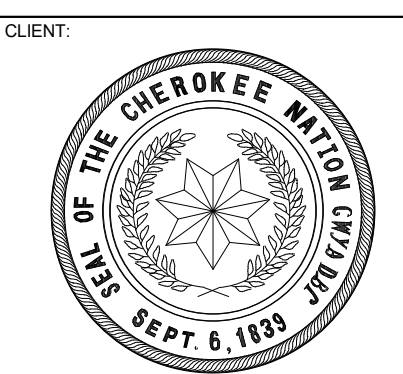
Table with columns: BRKR AMPS, WIRE SIZE, PHASE GROUND. Lists wire sizes for different breaker ratings and phase ground configurations.



James R. Childers Architect, Inc.
45 South 4th Street
Oklahoma City, OK 73101
479-783-2460
www.childersarchitect.com



HP ENGINEERING
PROJECT NO. 18068R
100% COMPLETE
HP ENGINEERING INC.
1317 W. SHELLEIGH PARKWAY
SUITE 102
MCKESSAR, OK 73766
(479) 894-8370
www.hpengineeringllc.com



WILMA P. MANKILLER HEALTH CENTER EXPANSION
STILWELL, OKLAHOMA

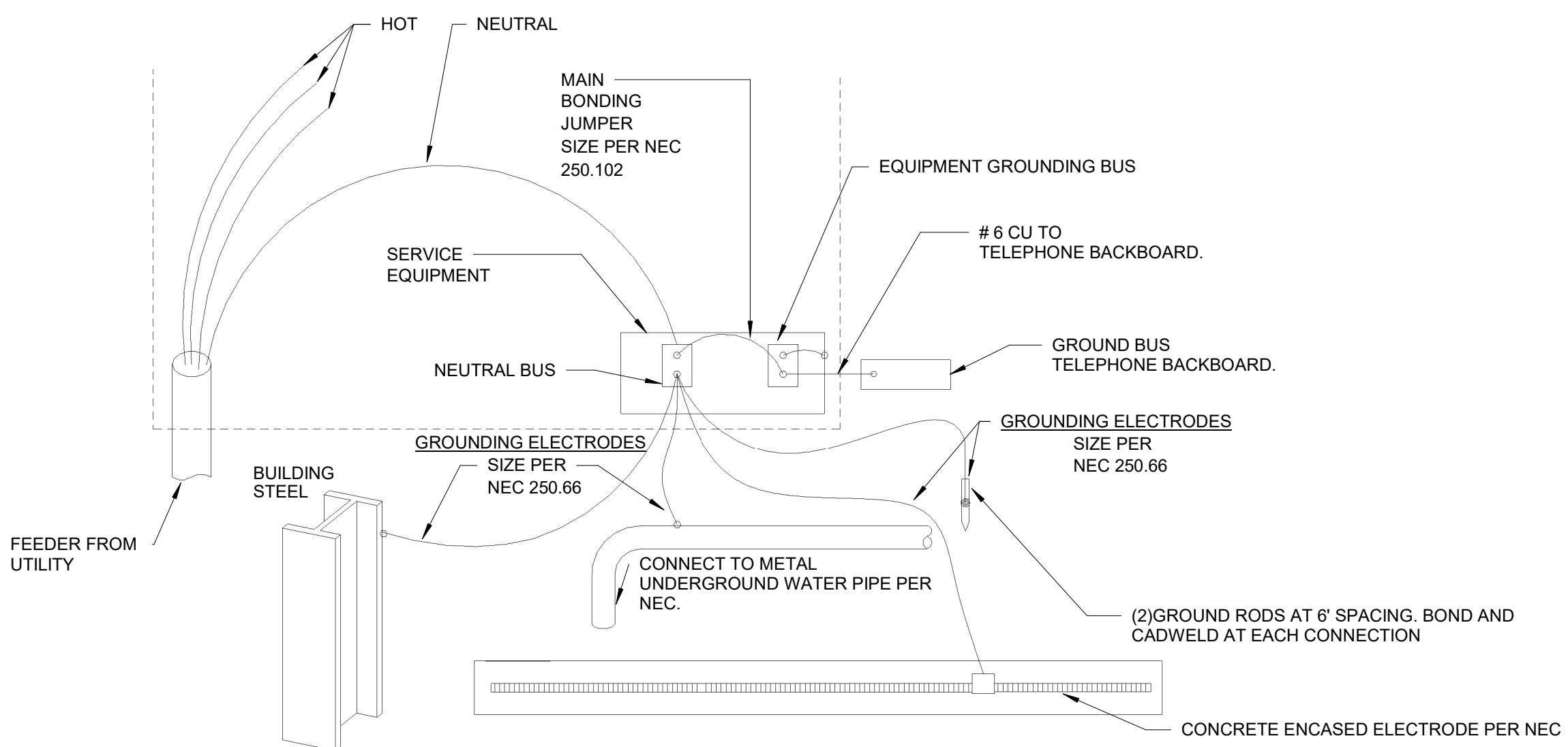
KEY PLAN

PROJECT PHASE: BID PACKAGE 02

Table with columns: #, DATE, REVISIONS, DESCRIPTION. Lists revision history.

DATE: 12-06-19 JOB NUMBER: 18-01.01

E3.02
PANEL SCHEDULES



TYPICAL GROUNDING DETAIL
12" = 1'-0"