

Finished Floor
EL=650.80
Finished Floor
EL=650.76

NEW 4" GREASE LINE

EXTEND 4" WL & TEMPORARY
CONNECT TO EX 10" WL TO
SERVE CASINO 3 WHILE
RECONSTRUCTING EX 10" WL

NEW FDC INSTALLED

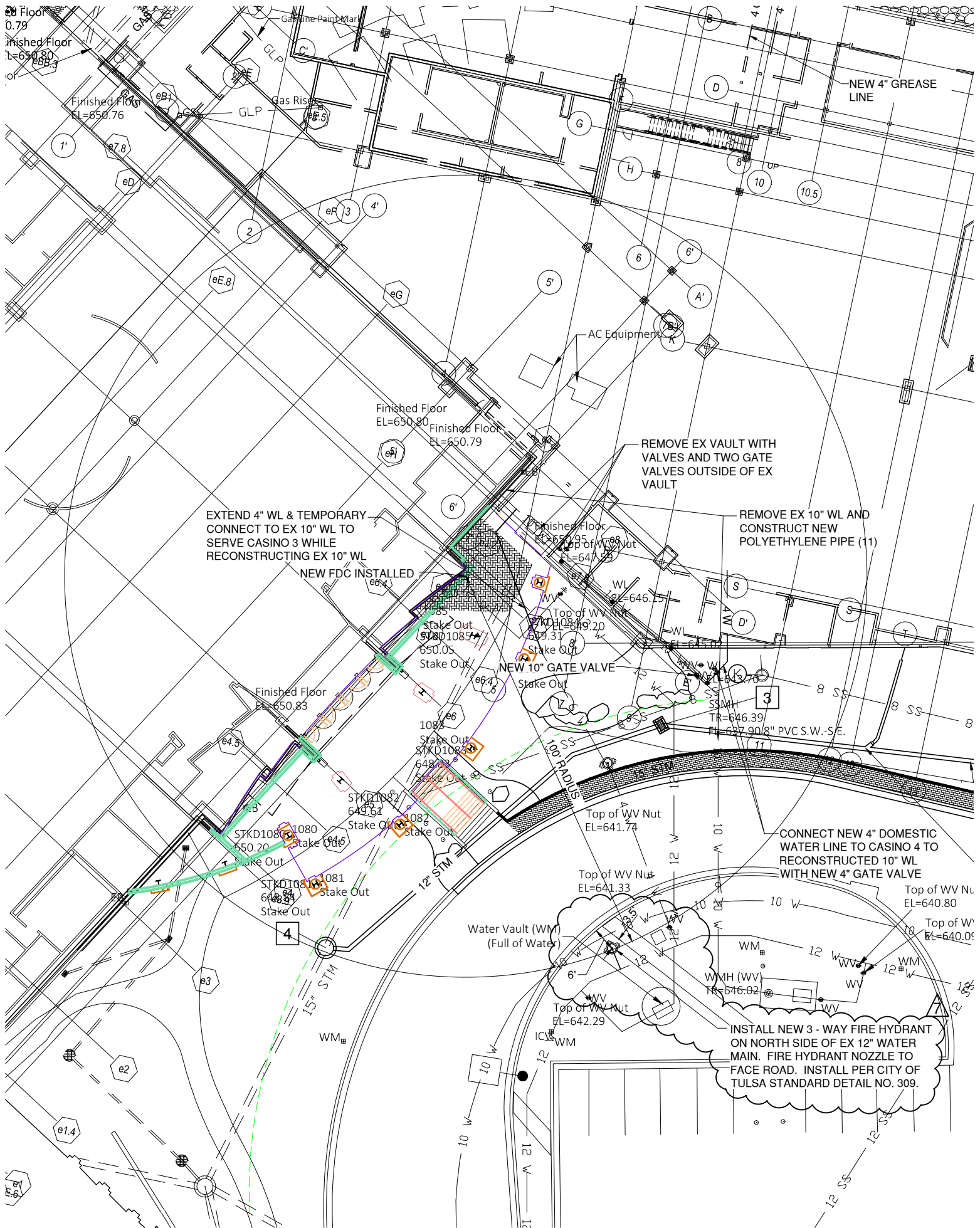
REMOVE EX VULT WITH
VALVES AND TWO GATE
VALVES OUTSIDE OF EX
VULT

REMOVE EX 10" WL AND
CONSTRUCT NEW
POLYETHYLENE PIPE (11)

NEW 10" GATE VALVE

CONNECT NEW 4" DOMESTIC
WATER LINE TO CASINO 4 TO
RECONSTRUCTED 10" WL
WITH NEW 4" GATE VALVE

INSTALL NEW 3 - WAY FIRE HYDRANT
ON NORTH SIDE OF EX 12" WATER
MAIN. FIRE HYDRANT NOZZLE TO
FACE ROAD. INSTALL PER CITY OF
TULSA STANDARD DETAIL NO. 309.



Finished Floor
EL=650.80
Finished Floor
EL=650.76

NEW 4" GREASE LINE

EXTEND 4" WL & TEMPORARY
CONNECT TO EX 10" WL TO
SERVE CASINO 3 WHILE
RECONSTRUCTING EX 10" WL

NEW FDC INSTALLED

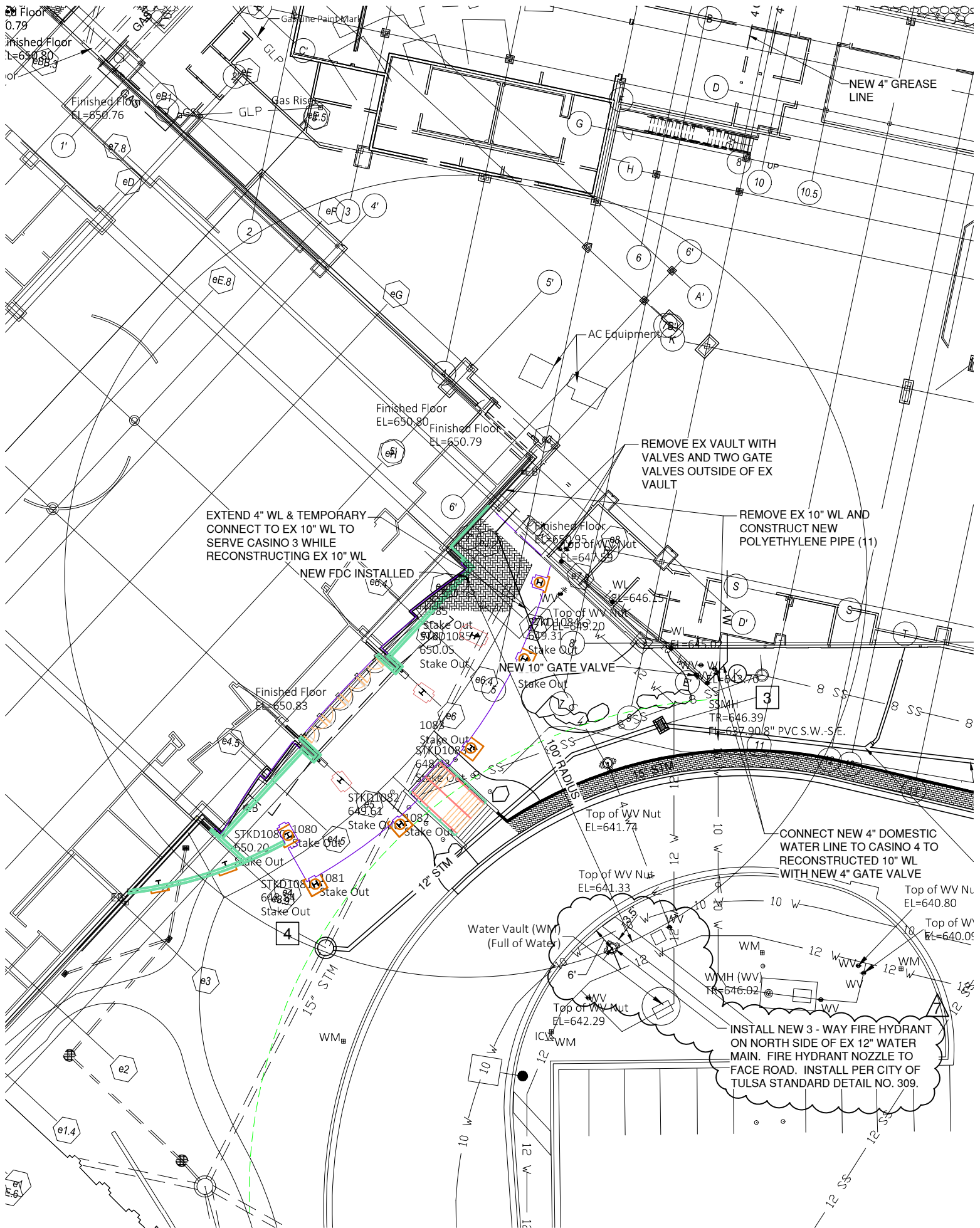
REMOVE EX VULT WITH
VALVES AND TWO GATE
VALVES OUTSIDE OF EX
VULT

REMOVE EX 10" WL AND
CONSTRUCT NEW
POLYETHYLENE PIPE (11)

NEW 10" GATE VALVE

CONNECT NEW 4" DOMESTIC
WATER LINE TO CASINO 4 TO
RECONSTRUCTED 10" WL
WITH NEW 4" GATE VALVE

INSTALL NEW 3 - WAY FIRE HYDRANT
ON NORTH SIDE OF EX 12" WATER
MAIN. FIRE HYDRANT NOZZLE TO
FACE ROAD. INSTALL PER CITY OF
TULSA STANDARD DETAIL NO. 309.



Finished Floor
EL=650.80
Finished Floor
EL=650.76

NEW 4" GREASE LINE

EXTEND 4" WL & TEMPORARY
CONNECT TO EX 10" WL TO
SERVE CASINO 3 WHILE
RECONSTRUCTING EX 10" WL

NEW FDC INSTALLED

REMOVE EX VULT WITH
VALVES AND TWO GATE
VALVES OUTSIDE OF EX
VULT

REMOVE EX 10" WL AND
CONSTRUCT NEW
POLYETHYLENE PIPE (11)

NEW 10" GATE VALVE

CONNECT NEW 4" DOMESTIC
WATER LINE TO CASINO 4 TO
RECONSTRUCTED 10" WL
WITH NEW 4" GATE VALVE

INSTALL NEW 3 - WAY FIRE HYDRANT
ON NORTH SIDE OF EX 12" WATER
MAIN. FIRE HYDRANT NOZZLE TO
FACE ROAD. INSTALL PER CITY OF
TULSA STANDARD DETAIL NO. 309.