

 **AIA** Document G710™ – 2017

Architect's Supplemental Instructions

PROJECT: *(name and address)*
Wilma P. Mankiller Health Center
Expansion
Stilwell, OK

CONTRACT INFORMATION:
Contract For: CMAR

Date:

ASI INFORMATION:
ASI Number: Bid Package 01 - ASI 002

Date: 02/05/20

OWNER: *(name and address)*
Cherokee Nation Property Management,
LLC

ARCHITECT: *(name and address)*
James R Childers Architect Inc.

CONTRACTOR: *(name and address)*
M Ross Inc

The Contractor shall carry out the Work in accordance with the following supplemental instructions without change in Contract Sum or Contract Time. Proceeding with the Work in accordance with these instructions indicates your acknowledgment that there will be no change in the Contract Sum or Contract Time.

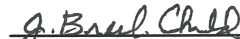
(Insert a detailed description of the Architect's supplemental instructions and, if applicable, attach or reference specific exhibits.)

See attached narrative from Chavez Grieves

ISSUED BY THE ARCHITECT:

James R Childers Architect Inc.

ARCHITECT *(Firm name)*



SIGNATURE

Breck Childers

PRINTED NAME AND TITLE

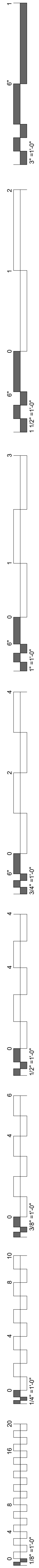
02/05/20

DATE

Bid Package 01- ASI 02 – Wilma P. Mankiller Health Center Expansion

Chavez-Grieves would like to incorporate the following revisions into the drawings for the above referenced project.

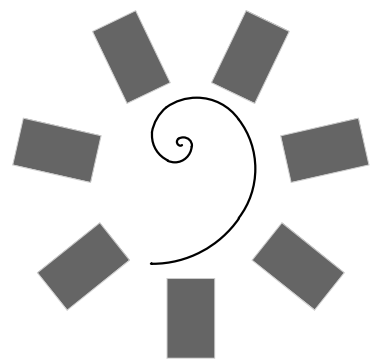
<u>Sheet</u>	<u>Description</u>
S1.13	Sheet keynote 12 removed from Grid 10.
S1.13	Section C1/S3.31 cut along Grid 10.
S1.13	Framing and deck edge near Grid G/10 modified.
S1.21	Beam sizes updated along Grid 10, between Grids G and D.
S1.21	Section C1/S3.31 cut along Grid 10.
S3.31	Section C1 added.



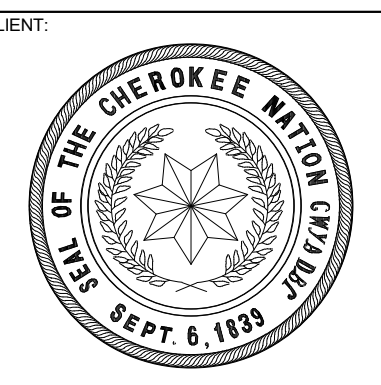
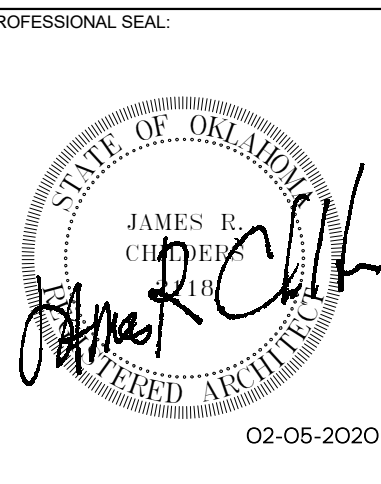
WILMA P. MANKILLER HEALTH CENTER EXPANSION

BID PACKAGE 01 (DEMOLITION / STEEL / FOUNDATIONS)

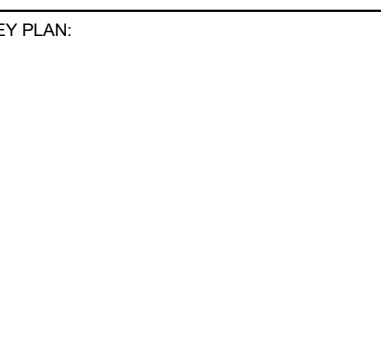
INDEX OF DRAWINGS - BID PACKAGE 01		11-01-19 - BID PACKAGE 01	11-22-19 - BID PACKAGE 01 - ADDENDUM 01	12-10-19 - BID PACKAGE 01 - ADDENDUM 02	01-10-20 - BID PACKAGE 01 - ASB 01	02-05-20 - BID PACKAGE 01 - ASB 02
SHEET NUMBER	SHEET NAME					
GENERAL						
G0.01	COVER / INDEX					
CIVIL						
C002	GENERAL NOTES					
CS100	EXISTING SITE PLAN					
CS101	DEMOLITION PLAN					
CS102	DEMOLITION PLAN					
CE100	EROSION CONTROL SITE PLAN					
CE500	EROSION CONTROL DETAILS					
ARCHITECTURAL						
A0.01	OVERALL BUILDING DEMOLITION PLAN					
STRUCTURAL						
S0.01	ABBREVIATIONS AND LEGENDS					
S0.02	GENERAL STRUCTURAL NOTES					
S0.03	GENERAL STRUCTURAL NOTES AND SPECIAL INSPECTIONS					
SD0.01	DEMOLITION GENERAL STRUCTURAL NOTES					
SD1.01	DEMOLITION PLANS - SECTOR 1					
SD2.01	DEMOLITION SECTIONS					
S1.00	OVERALL PLAN - FOUNDATION					
S1.01	FOUNDATION PLAN SECTOR 1					
S1.02	FOUNDATION PLAN SECTOR 2					
S1.10	OVERALL PLAN - FLOOR FRAMING					
S1.11	FLOOR FRAMING PLAN - SECTOR 1					
S1.12	FLOOR FRAMING PLAN - SECTOR 2					
S1.13	LOW ROOF FRAMING PLAN					
S1.20	OVERALL PLAN - ROOF FRAMING					
S1.21	ROOF FRAMING PLAN - SECTOR 1					
S1.22	ROOF FRAMING PLAN - SECTOR 2					
S2.01	MOMENT FRAME AND BRACED FRAME ELEVATIONS					
S2.02	MOMENT FRAME AND BRACED FRAME ELEVATIONS					
S3.01	WALL SECTIONS					
S3.02	WALL SECTIONS					
S3.03	WALL SECTIONS					
S3.04	WALL SECTIONS					
S3.11	FOUNDATION SECTIONS					
S3.12	FOUNDATION SECTIONS					
S3.21	FLOOR FRAMING SECTIONS					
S3.31	ROOF FRAMING SECTIONS					
S4.01	ENLARGED PLANS					
S5.21	MASONRY FRAMING SECTIONS AND DETAILS					
S6.41	VERTICAL CIRCULATION DETAILS					
S5.51	STEEL DETAILS					
S5.52	STEEL DETAILS					
S5.53	STEEL DETAILS					
S5.54	STEEL DETAILS					
S6.01	SCHEDULES					
S7.11	TYPICAL CONCRETE DETAILS					
S7.21	TYPICAL MASONRY DETAILS					
S7.31	TYPICAL COLD-FORMED DETAILS					
S7.41	TYPICAL STEEL DETAILS					
S7.42	TYPICAL STEEL DETAILS					
S8.01	SIDEPLATE GENERAL NOTES AND CONSTRUCTION GUIDELINES					
S8.02	SIDEPLATE COLUMN DETAILS, A TYPE					
S8.03	SIDEPLATE COLUMN DETAILS, B TYPE					
S8.04	SIDEPLATE BEAM DETAILS					
S8.05	SIDEPLATE BEAM DETAILS, NARROW					
S8.06	SIDEPLATE FIELD ERECTION DETAILS					
S8.07	SIDEPLATE COORDINATION ITEMS					
S8.08	SIDEPLATE MISCELLANEOUS DETAILS					
ELECTRICAL						
E0.01	ELECTRICAL DEMOLITION PLAN					
Grand total: 66						



James R. Childers
Architect, Inc.
45 South 4th Street
Fort Smith, AR 72901
479-783-2450
www.childersarchitect.com



**WILMA P. MANKILLER HEALTH CENTER
EXPANSION**
 STILWELL, OKLAHOMA



PROJECT PHASE:
BID PACKAGE 01

#	DATE	REVISIONS
1	11/22/19	BID PACKAGE 01 - ADD 01
2	12/10/19	BID PACKAGE 01 - ADD 02
3	1/10/20	BID PACKAGE 01 - ASB 01
4	2/5/2020	BID PACKAGE 01 - ASB 02

DATE: 11-01-19 JOB NUMBER: 18-01.01

SHEET NUMBER:
G0.01

COVER / INDEX



1836 SOUTH BALTIMORE AVE.
TULSA, OK 74119
(539) 664-4618

MECHANICAL / ELECTRICAL / PLUMBING ENGINEER



3902 UNIVERSITY BOULEVARD
DURANT, OK 74701
(580) 931-9045

CIVIL ENGINEER



4700 LINCOLN ROAD NE, SUITE 102
ALBUQUERQUE, NM 87109
(505) 344-4080

STRUCTURAL ENGINEER



808 TRAVIS STREET, SUITE 200
HOUSTON, TX 77002
(281) 589-5900

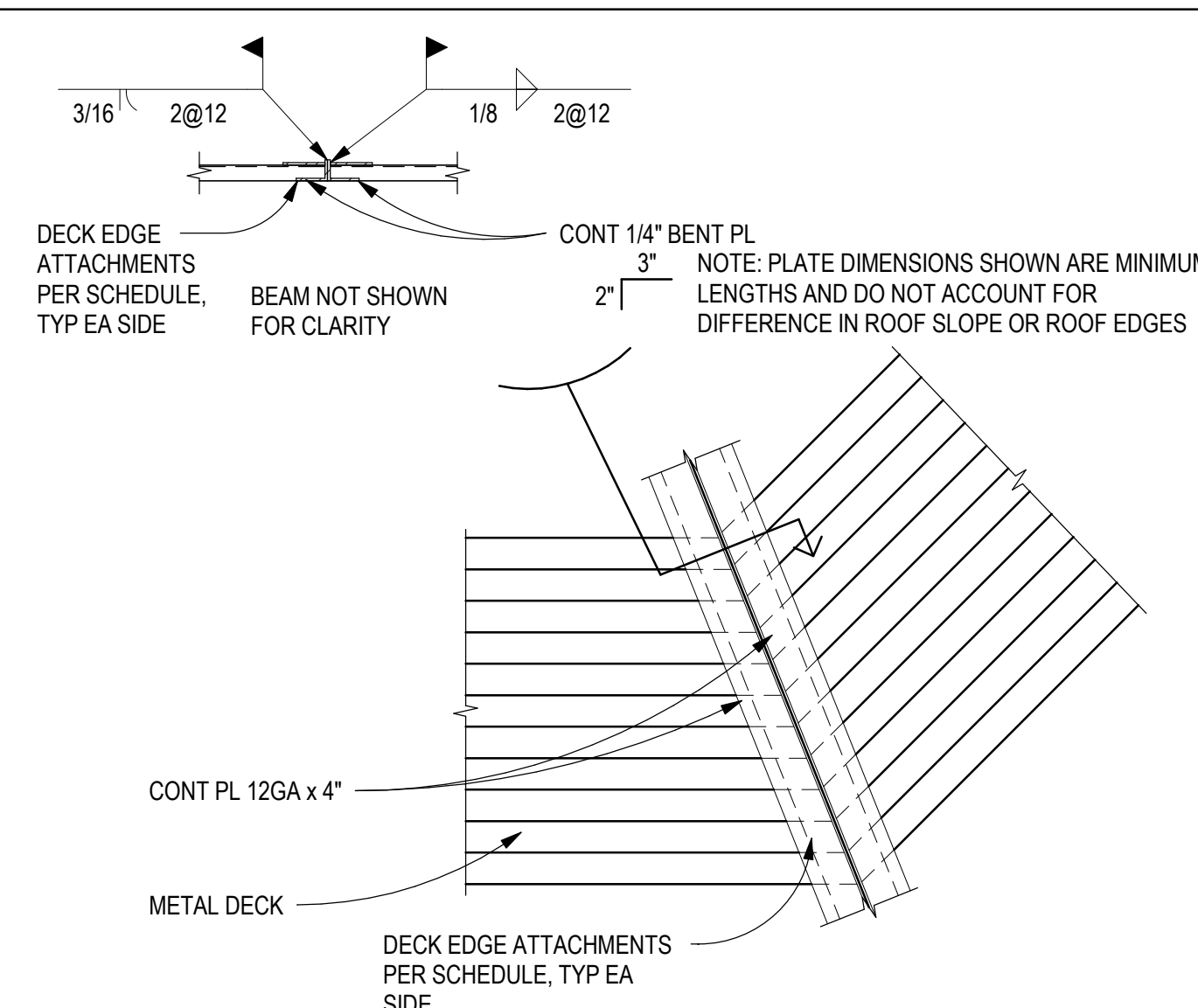
FIRE PROTECTION / LIFE SAFETY



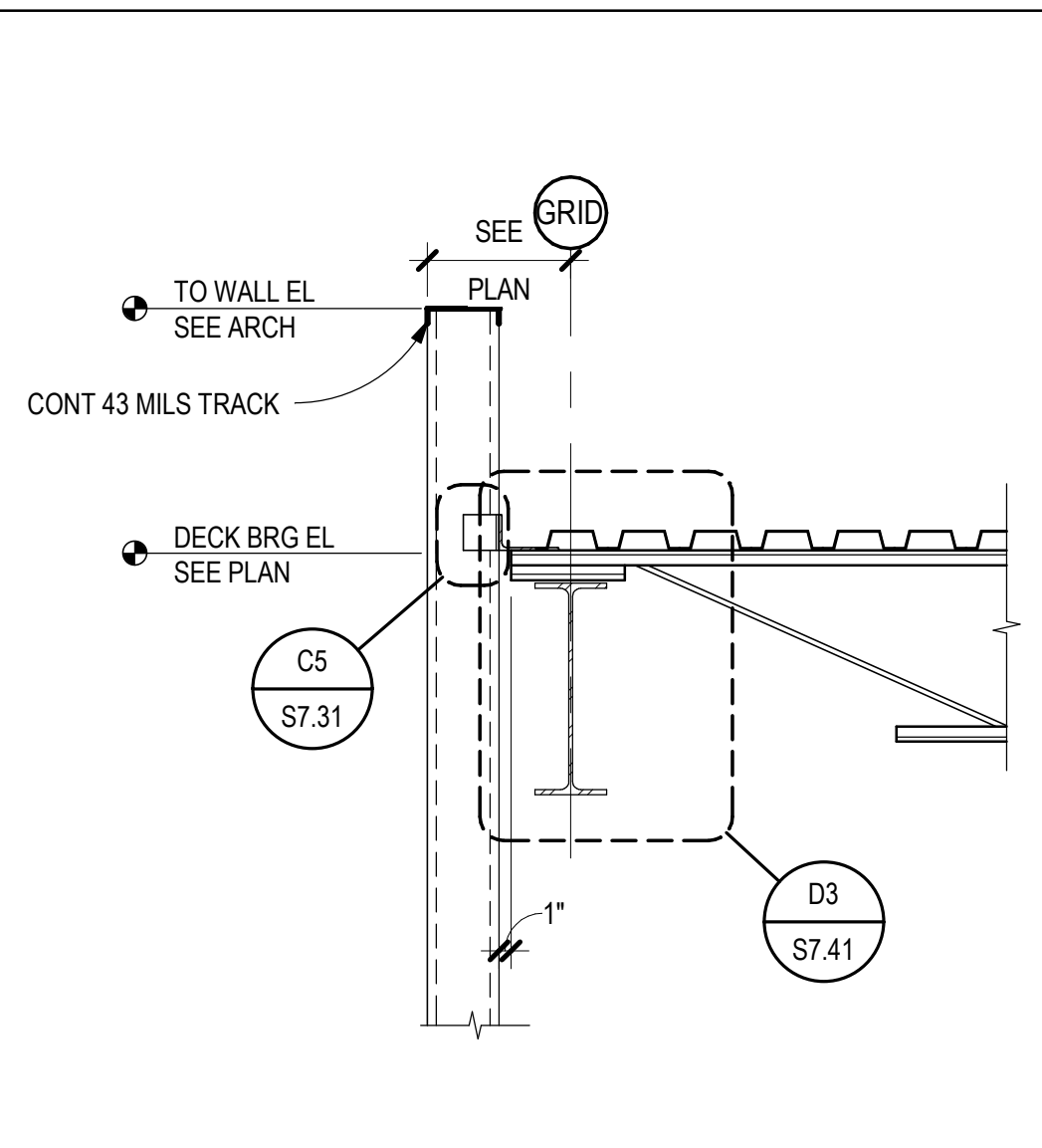
1316 E 35TH PLACE, SUITE 100
TULSA, OK 74105
(918) 382-9120

EQUIPMENT PLANNER

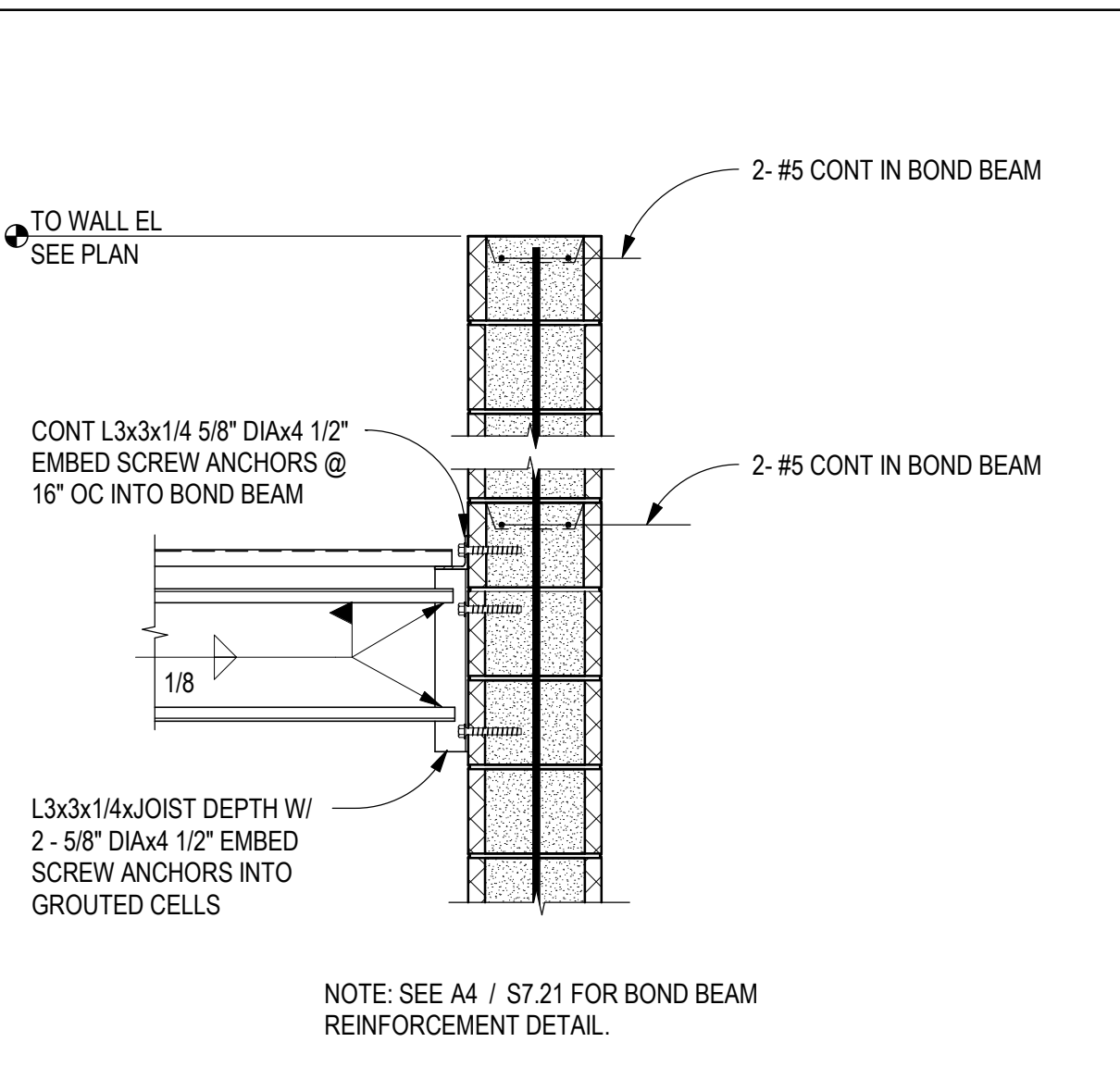
3/4" = 1'-0"
1/2" = 1'-0"
1/8" = 1'-0"
3/16" = 1'-0"
1/4" = 1'-0"
5/16" = 1'-0"
3/8" = 1'-0"
1/2" = 1'-0"
5/8" = 1'-0"
3/4" = 1'-0"
7/8" = 1'-0"
1" = 1'-0"
1 1/8" = 1'-0"
1 1/4" = 1'-0"
1 1/2" = 1'-0"
1 3/4" = 1'-0"
2" = 1'-0"
2 1/4" = 1'-0"
2 1/2" = 1'-0"
2 3/4" = 1'-0"
3" = 1'-0"
3 1/4" = 1'-0"
3 1/2" = 1'-0"
3 3/4" = 1'-0"
4" = 1'-0"
4 1/4" = 1'-0"
4 1/2" = 1'-0"
4 3/4" = 1'-0"
5" = 1'-0"
5 1/4" = 1'-0"
5 1/2" = 1'-0"
5 3/4" = 1'-0"
6" = 1'-0"
6 1/4" = 1'-0"
6 1/2" = 1'-0"
6 3/4" = 1'-0"
7" = 1'-0"
7 1/4" = 1'-0"
7 1/2" = 1'-0"
7 3/4" = 1'-0"
8" = 1'-0"
8 1/4" = 1'-0"
8 1/2" = 1'-0"
8 3/4" = 1'-0"
9" = 1'-0"
9 1/4" = 1'-0"
9 1/2" = 1'-0"
9 3/4" = 1'-0"
10" = 1'-0"
10 1/4" = 1'-0"
10 1/2" = 1'-0"
10 3/4" = 1'-0"
11" = 1'-0"
11 1/4" = 1'-0"
11 1/2" = 1'-0"
11 3/4" = 1'-0"
12" = 1'-0"
12 1/4" = 1'-0"
12 1/2" = 1'-0"
12 3/4" = 1'-0"
13" = 1'-0"
13 1/4" = 1'-0"
13 1/2" = 1'-0"
13 3/4" = 1'-0"
14" = 1'-0"
14 1/4" = 1'-0"
14 1/2" = 1'-0"
14 3/4" = 1'-0"
15" = 1'-0"
15 1/4" = 1'-0"
15 1/2" = 1'-0"
15 3/4" = 1'-0"
16" = 1'-0"
16 1/4" = 1'-0"
16 1/2" = 1'-0"
16 3/4" = 1'-0"
17" = 1'-0"
17 1/4" = 1'-0"
17 1/2" = 1'-0"
17 3/4" = 1'-0"
18" = 1'-0"
18 1/4" = 1'-0"
18 1/2" = 1'-0"
18 3/4" = 1'-0"
19" = 1'-0"
19 1/4" = 1'-0"
19 1/2" = 1'-0"
19 3/4" = 1'-0"
20" = 1'-0"



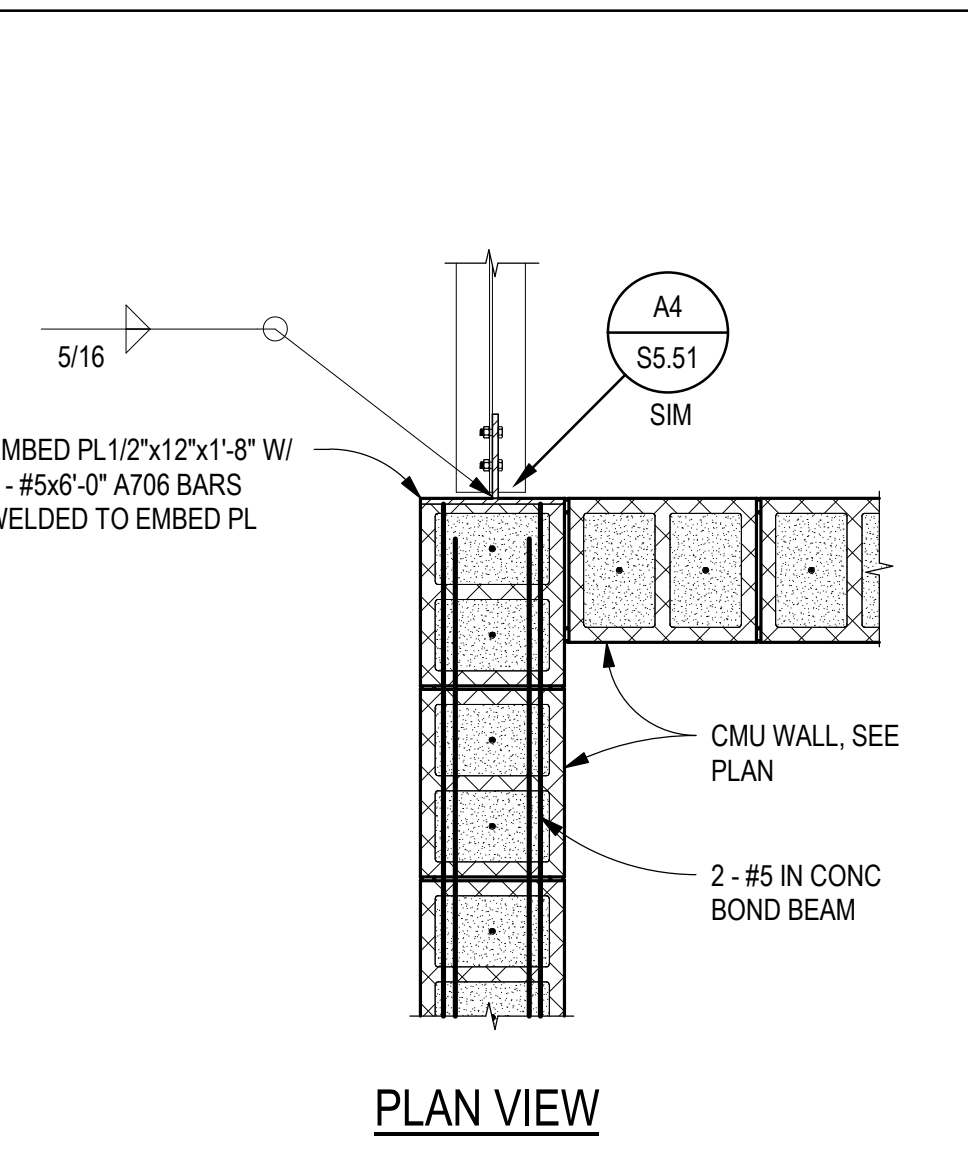
D2 ROOF DECK TRANSITION
SCALE: 3/4" = 1'-0"



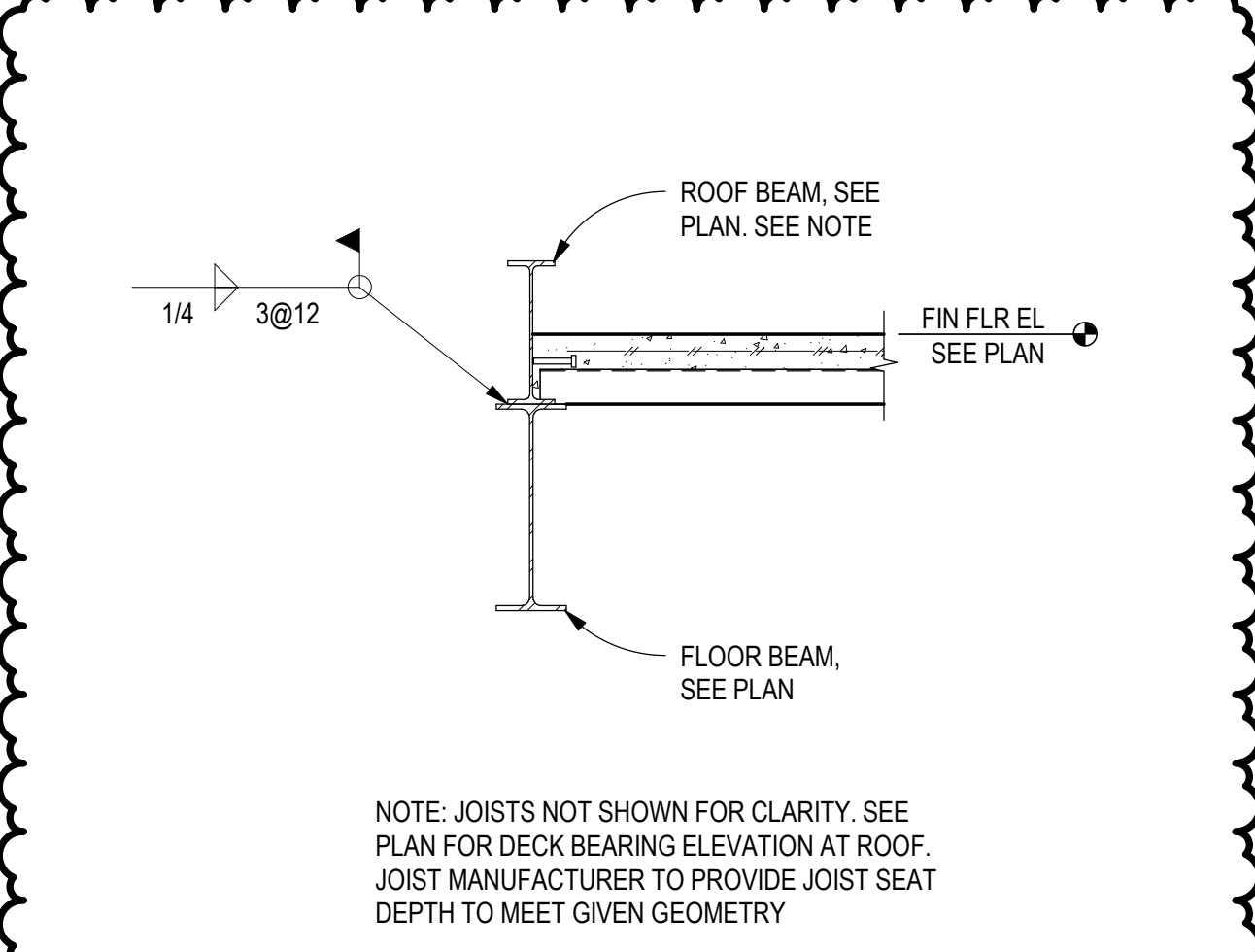
D3 ROOF FRAMING SECTION
SCALE: 3/4" = 1'-0"



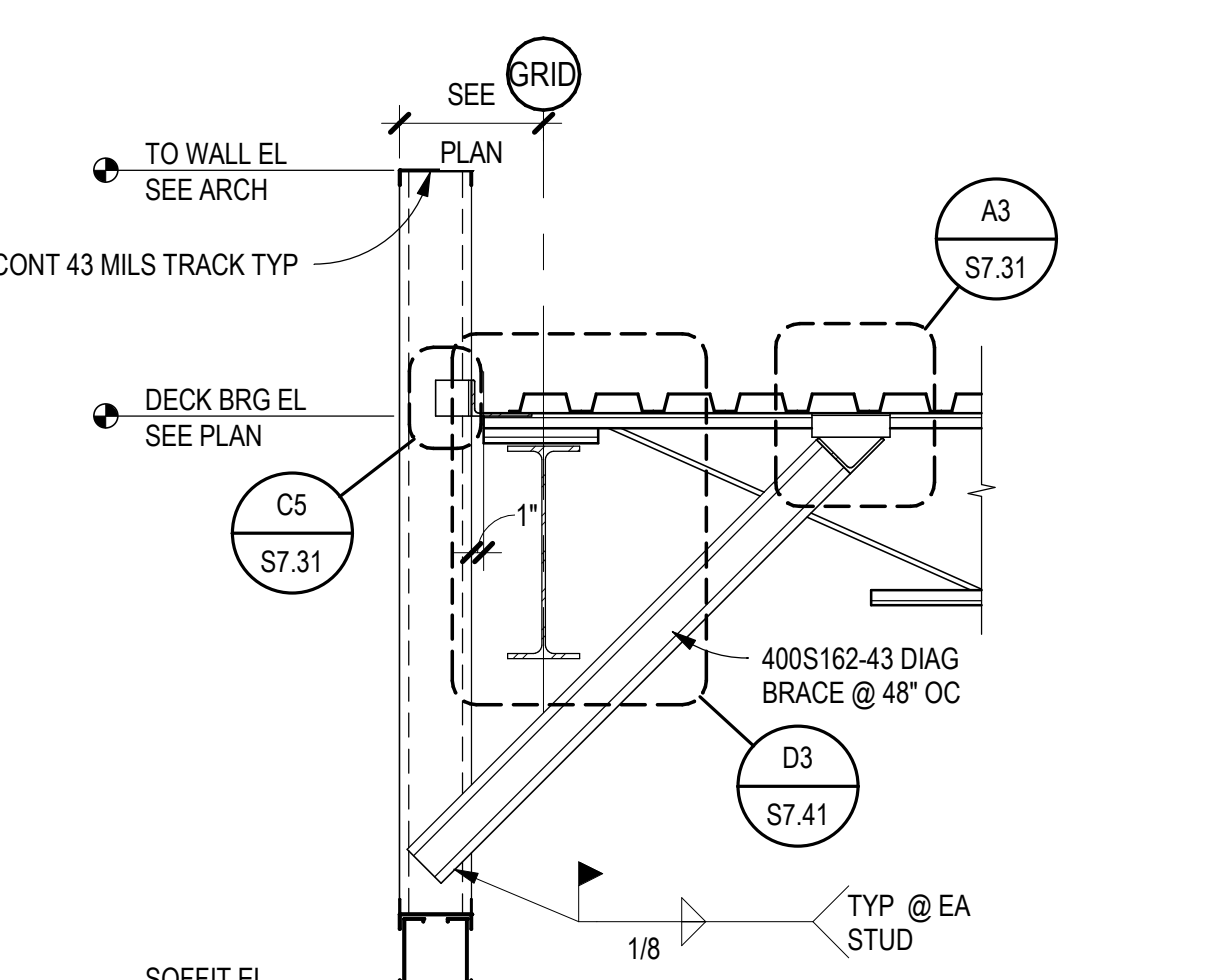
D4 ROOF NON-BEARING AT CMU WALL
SCALE: 3/4" = 1'-0"



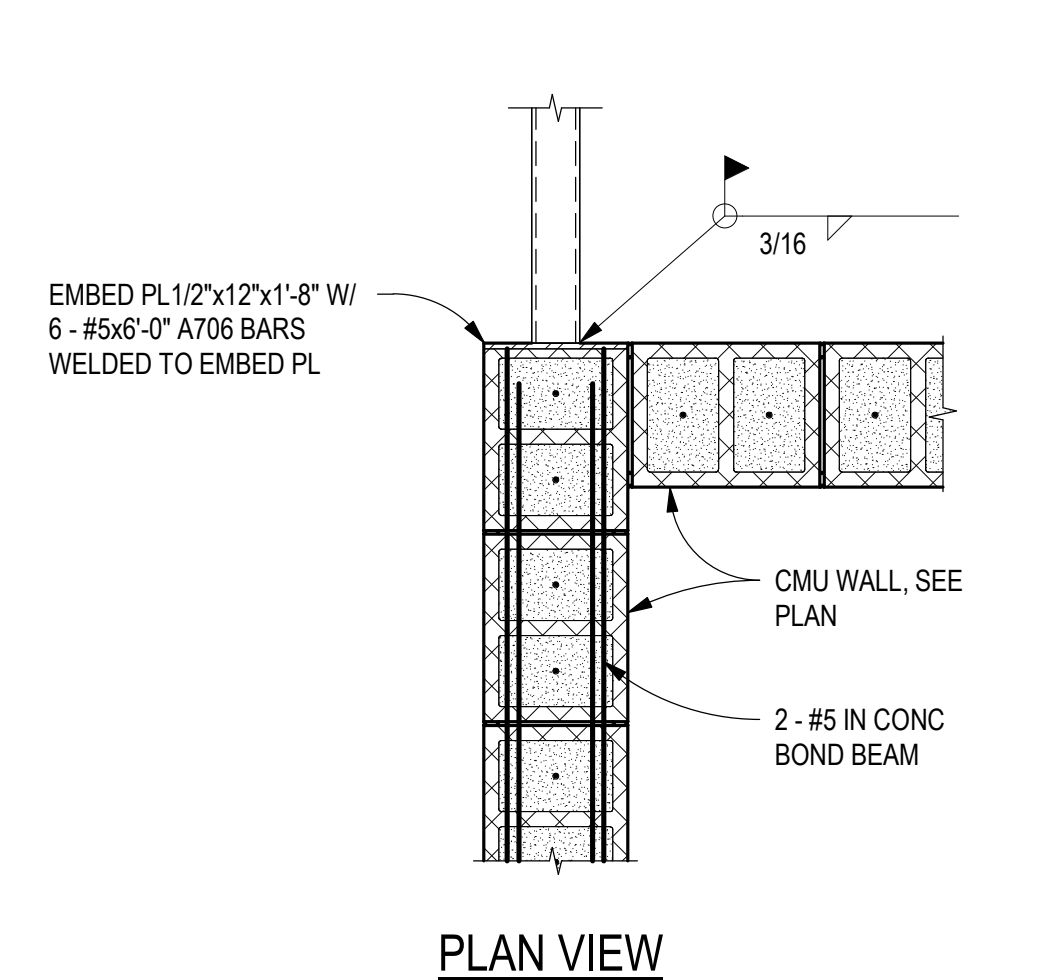
D5 WF COLLECTOR BEAM TO CMU
SCALE: 3/4" = 1'-0"



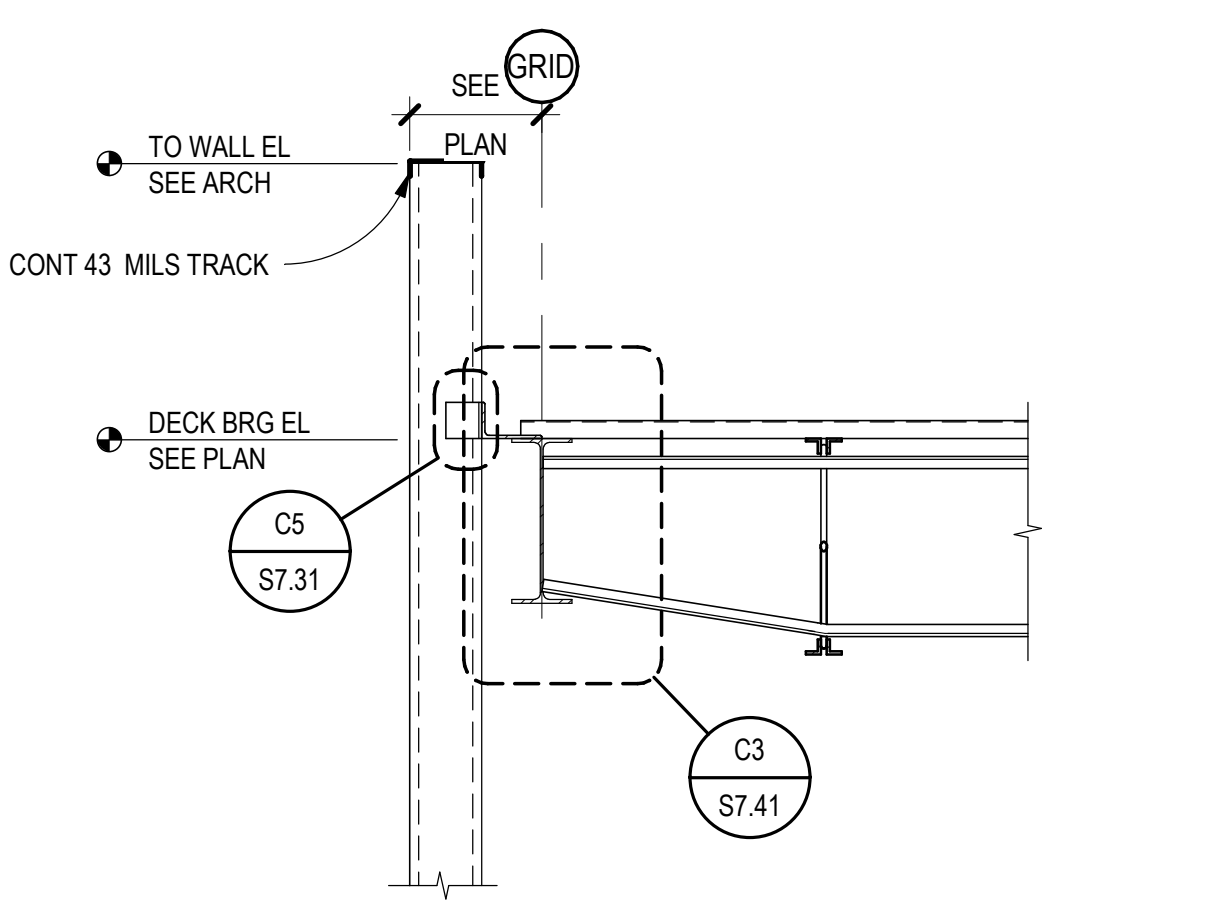
C1 ROOF BEAM TO FLOOR BEAM CONN
SCALE: 3/4" = 1'-0"



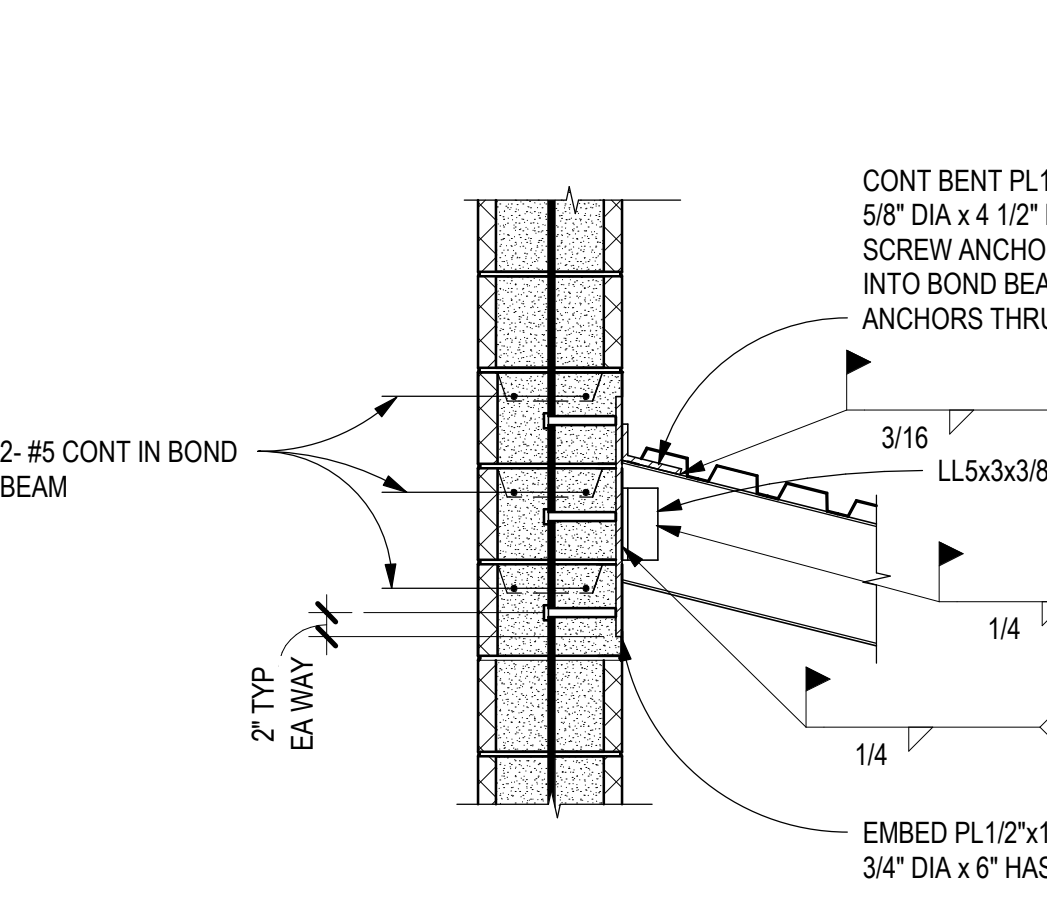
C2 ROOF FRAMING SECTION
SCALE: 3/4" = 1'-0"



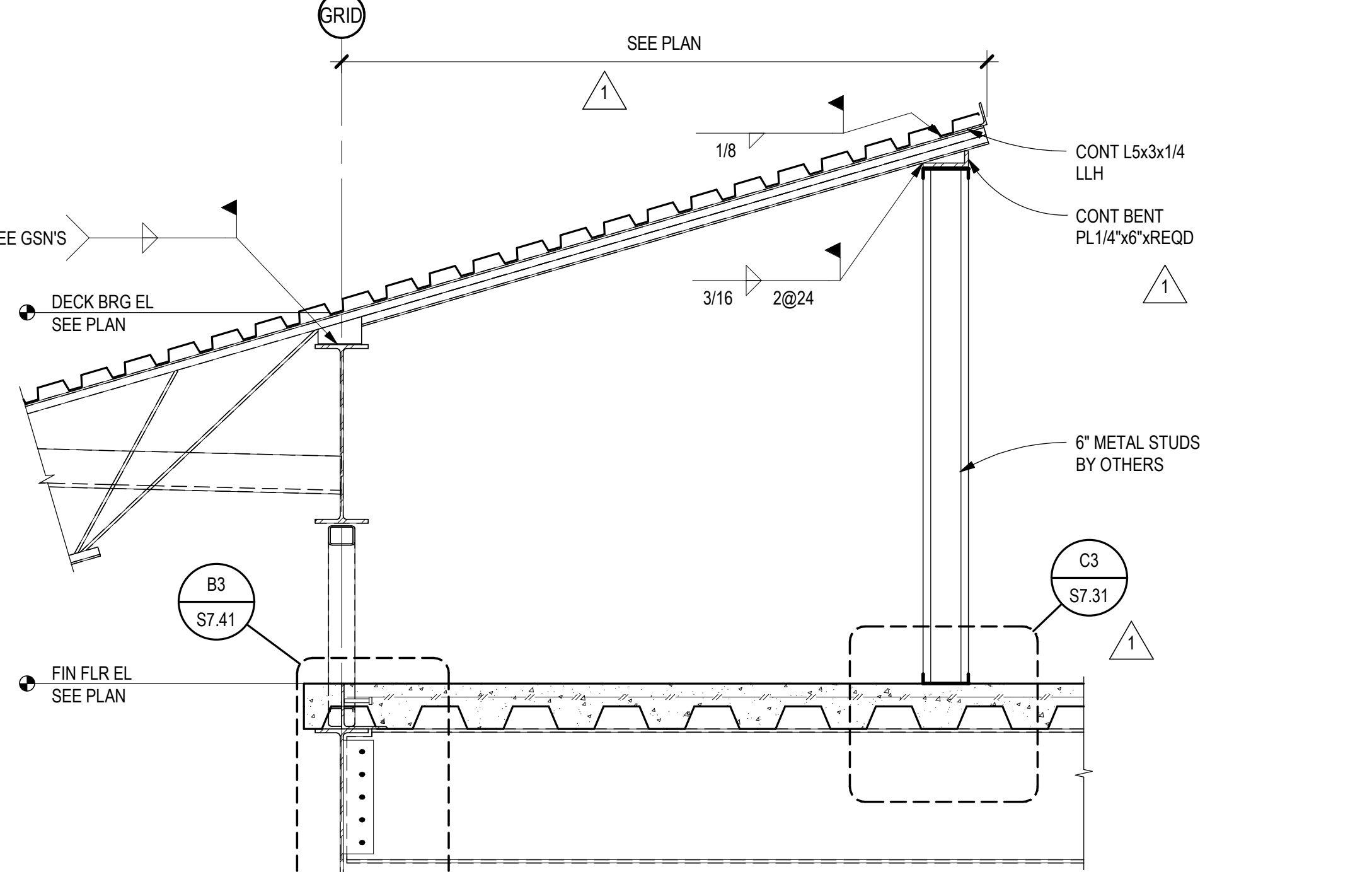
C3 HSS COLLECTOR BEAM TO CMU
SCALE: 3/4" = 1'-0"



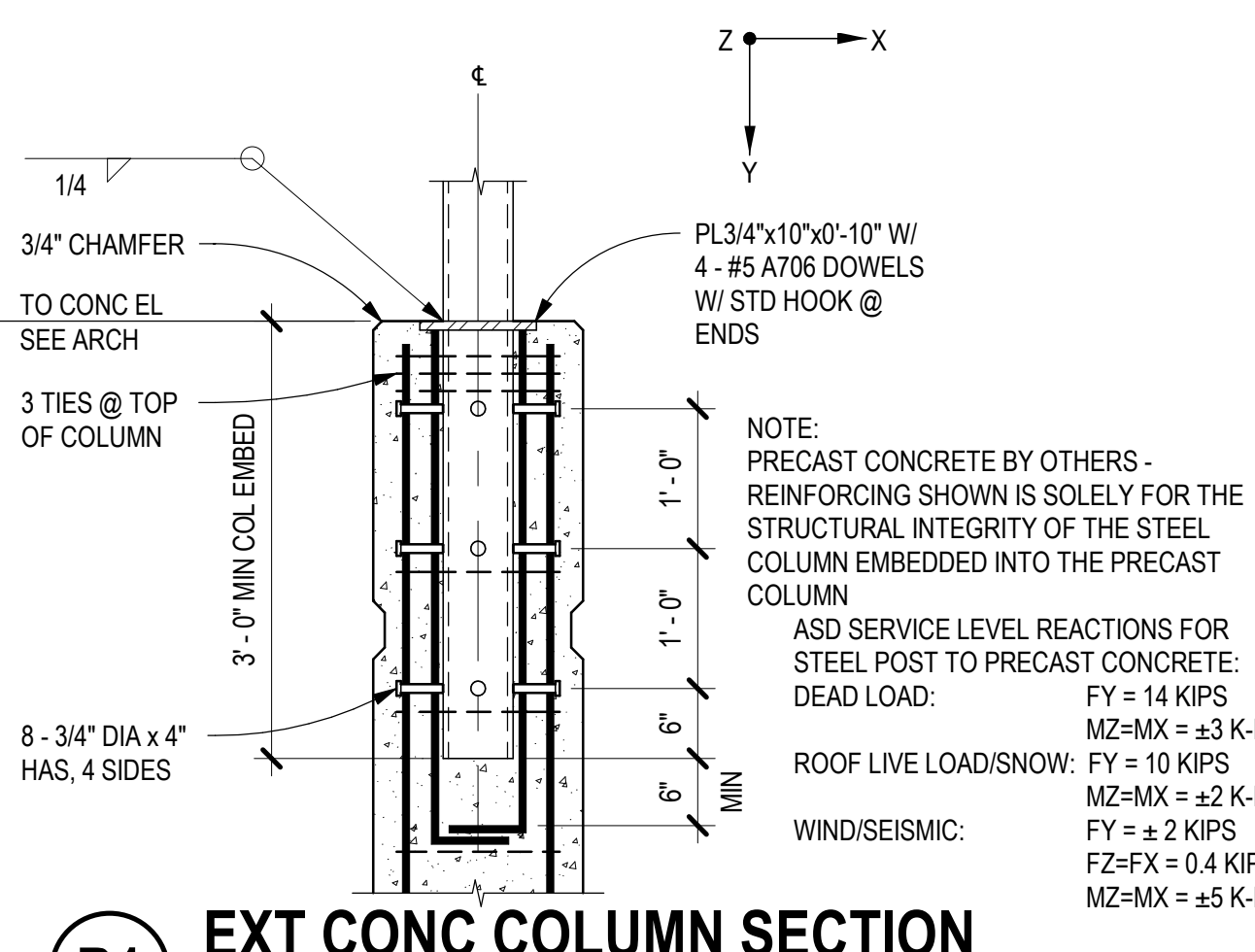
B2 ROOF FRAMING SECTION
SCALE: 3/4" = 1'-0"



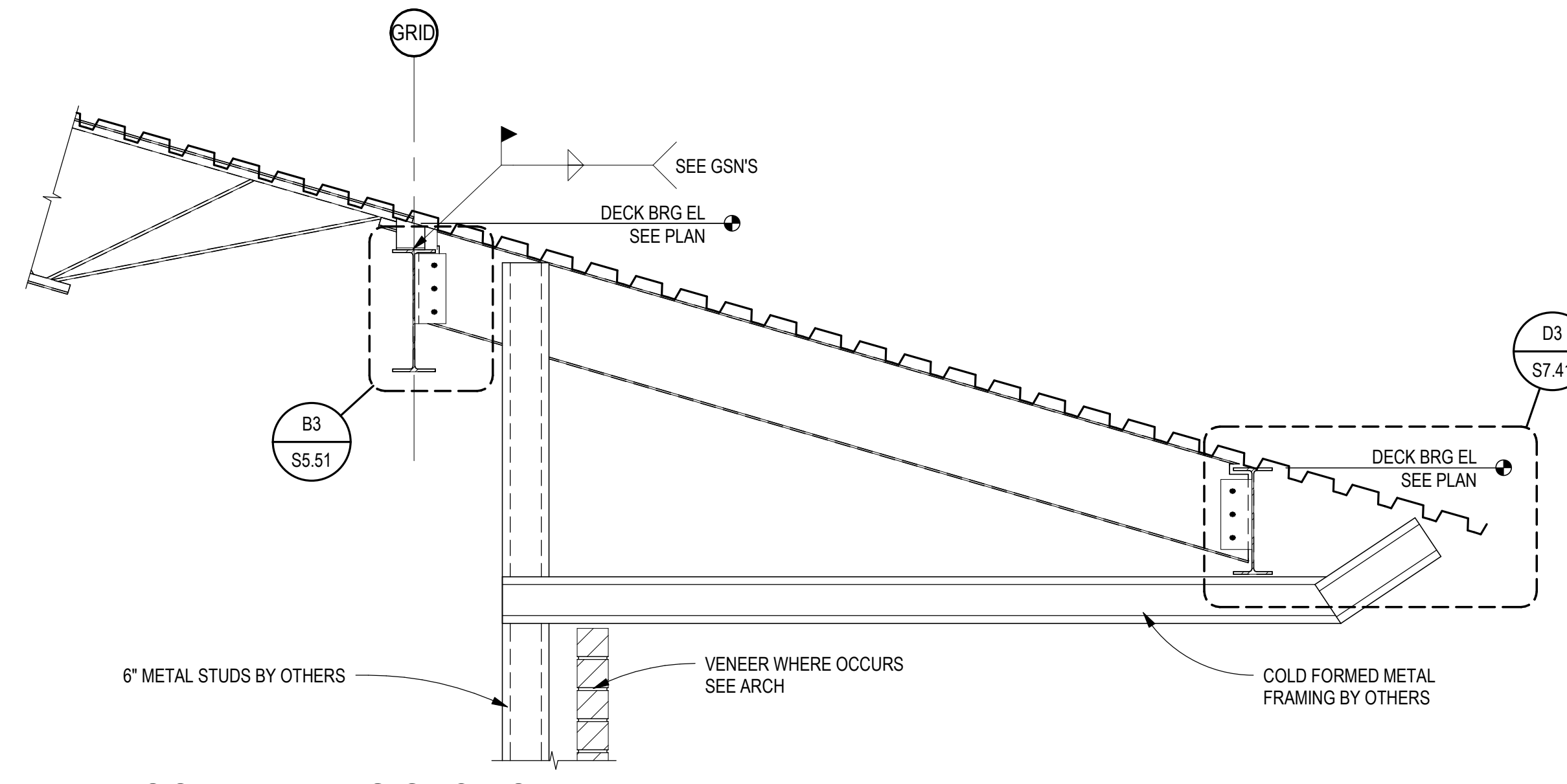
B3 FRAMING SECTION
SCALE: 3/4" = 1'-0"



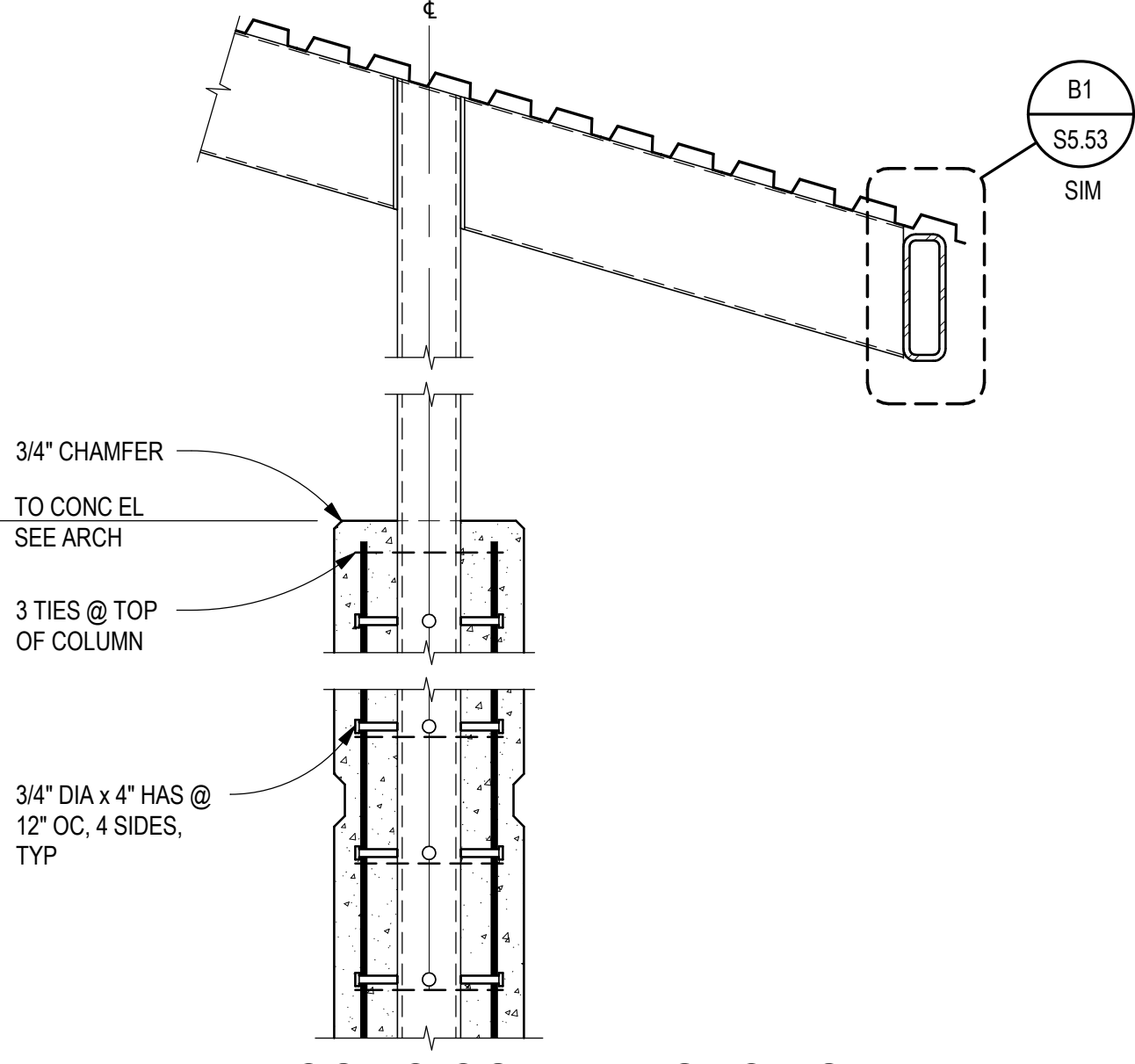
B4 ROOF FRAMING SECTION
SCALE: 3/4" = 1'-0"



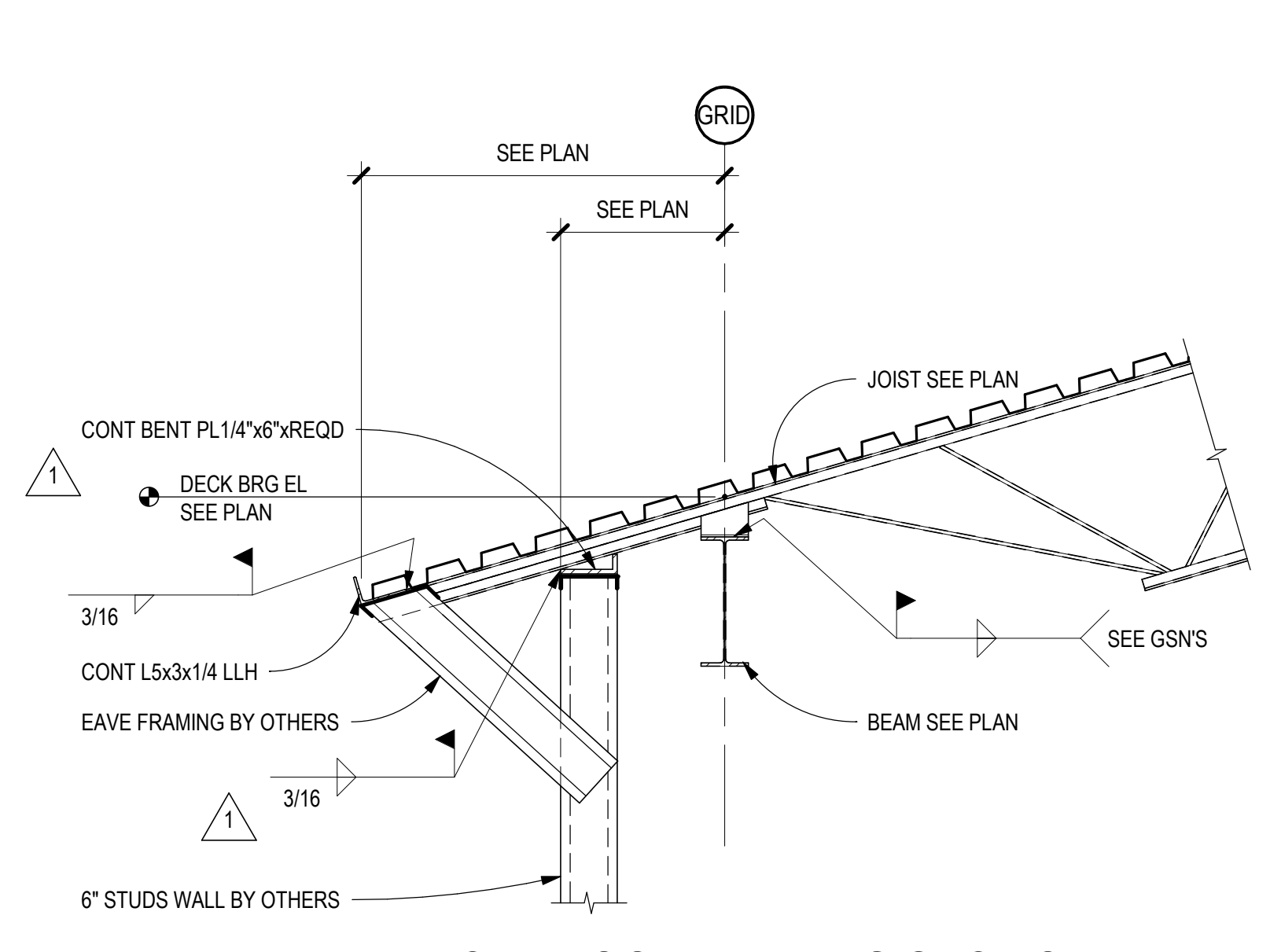
B1 EXT CONC COLUMN SECTION
SCALE: 3/4" = 1'-0"



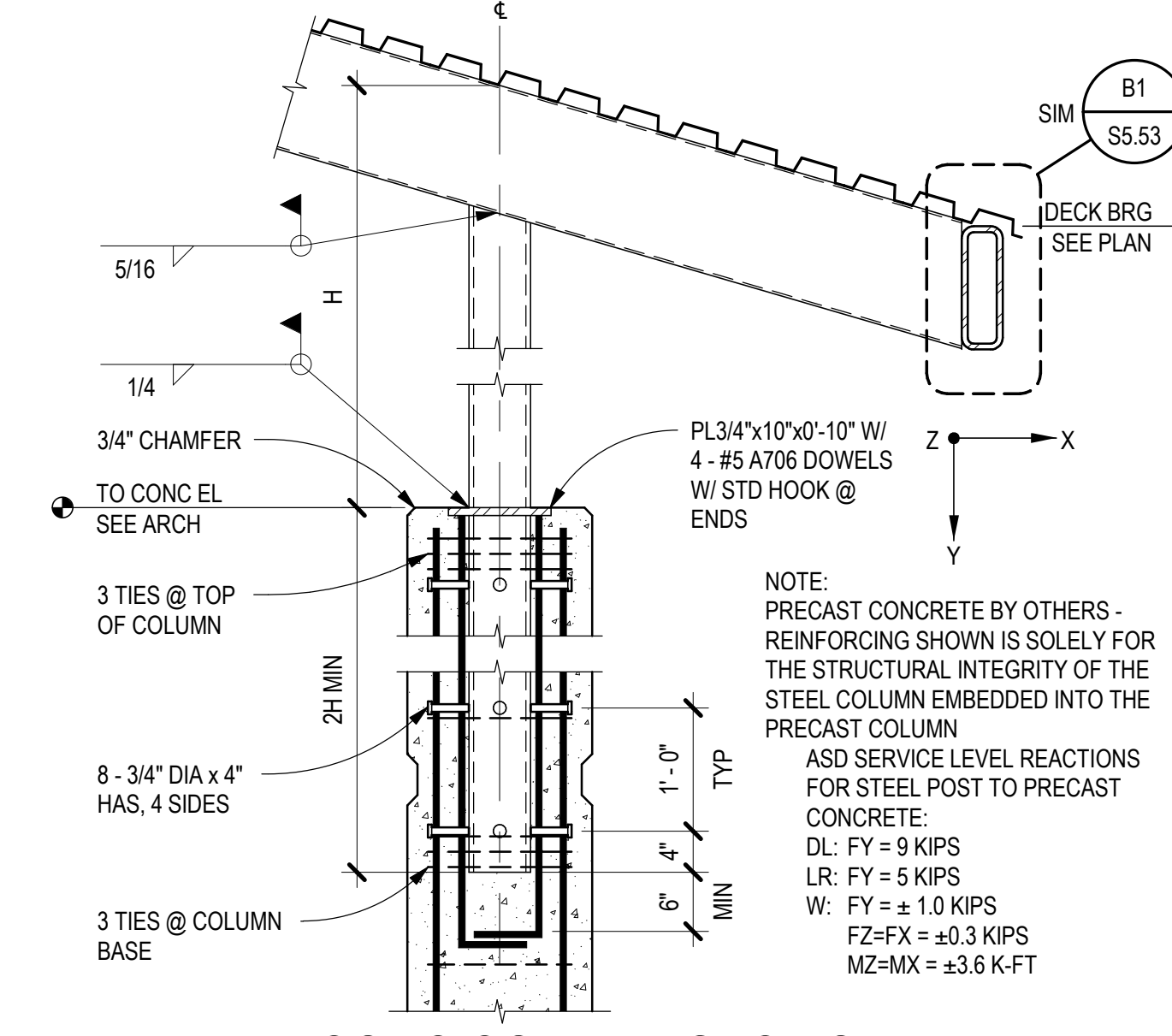
A2 ROOF FRAMING SECTION
SCALE: 3/4" = 1'-0"



A1 EXT CONC COLUMN SECTION
SCALE: 3/4" = 1'-0"



A4 TYPICAL ROOF FRAMING SECTION
SCALE: 3/4" = 1'-0"



A5 EXT CONC COLUMN SECTION
SCALE: 3/4" = 1'-0"