



Cherokee Nation Property Management

April 21, 2020

Wilma P. Mankiller Health Center Expansion

Stilwell, Oklahoma

CM Clarification No. 1

Bid Package 6A Millwork

Please see our responses to the following questions

1. Page 064023 - 14 Sect.H. Concealed backs and... .20 inch (5mm) thick. Architectural drawing 20/A8.31 a 1/2" back of solid backing. Lakewood specs call for 1/4" melamine MDF core which is closer to the .20 spec. **BACKING TO BE SOLID 1/2"**

2. Page 12 3661 - 2 Sect. 2.2 Simulated Stone Countertop Materials. B. Panel thickness 1/2". Arch. drawing 05/A8.32 3/4" Solid Surfacing... . Lakewood uses 1/2" material which is the only size available. **SOLID SURFACE MATERIAL THICKNESS TO BE 1/2"**

3. Page 06 4023 - 13 Sect. H. Kicks and Bases: Solid-hardwood lumber, 1 1/2. Arch. drawing 06/A8.32 shows a plywood base that looks like 3/4". Lakewood uses pressure treated 3/4" plywood. **LAKEWOOD SPECS ARE ACCEPTABLE**

4. 06 4023 - 13 Sect. F. Face Frames, Rails, Kicks and Bases: Solid-hardwood lumber or hardwood plywood, 3/4 in (19mm) thick minimum thickness. Arch. drawing 07/A8.32 shows no face frame. Lakewood specs are Frameless with out face frame. **LAKEWOOD SPECS ARE ACCEPTABLE**

Thank you,
Chase Myska
Draftsman
Childers Architect

M. Ross, Inc.

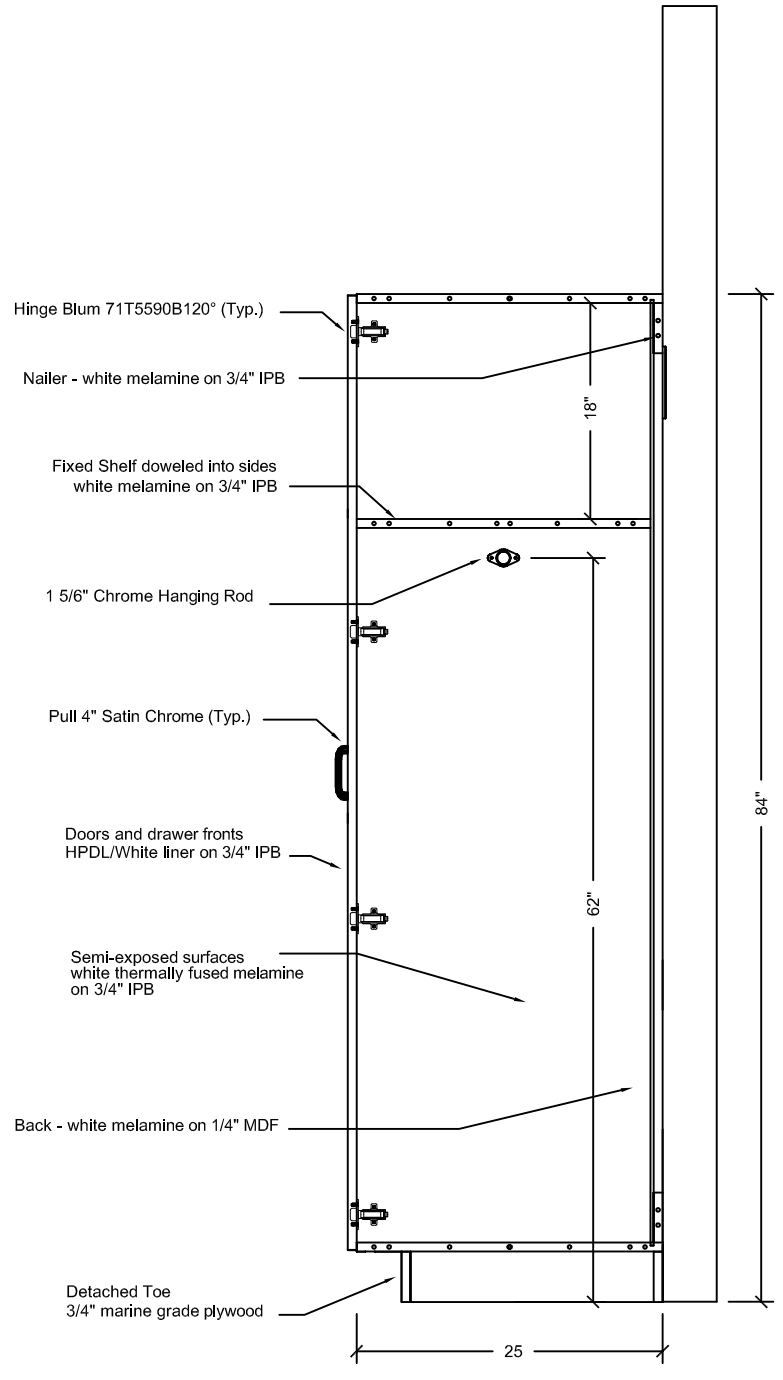
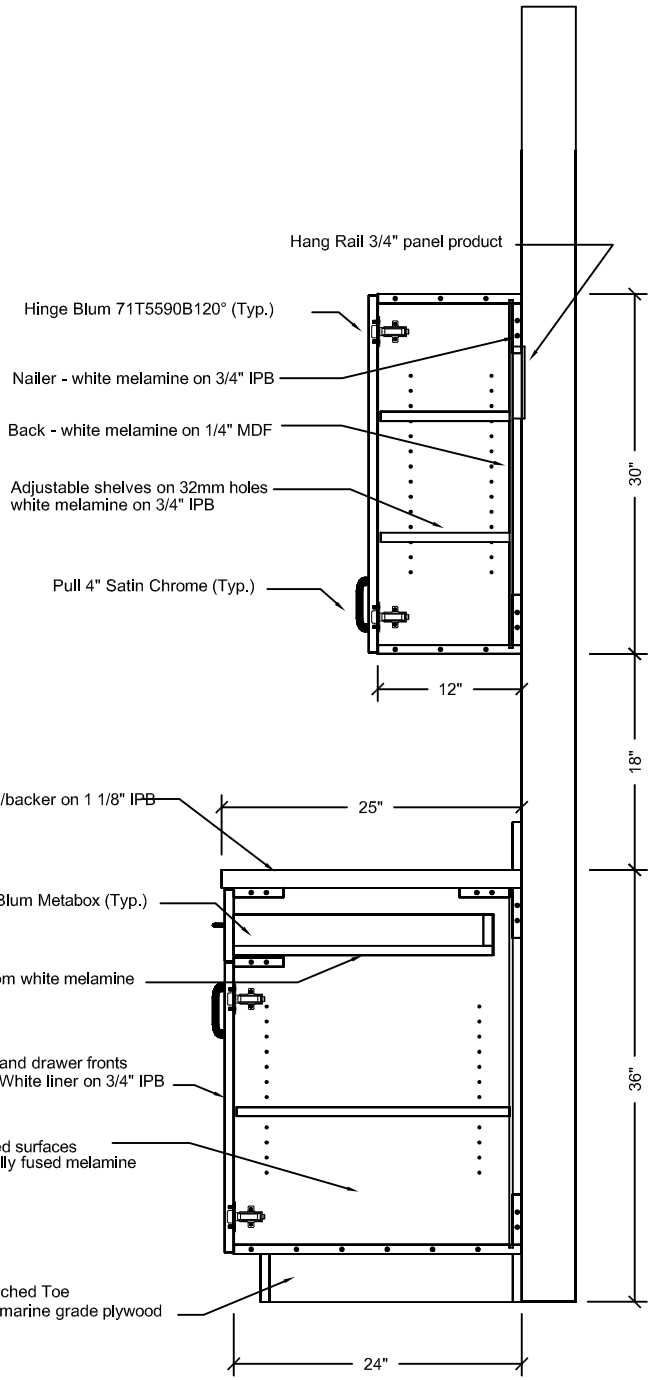
3441 W 46th St S

Muskogee, OK 74401

Phone: 918.681.2100

Fax: 918.681.2103

E-mail: mikeross99@hotmail.com



LAKWOOD CABINETRY, INC
 P.O. BOX 388, HWY 82
 LANGLEY, OK 74350

Project
 Customer

Scale 3/4" = 1'
 Date

Room(s) Millwork Section
 Drawing

Approved By
 Date



LAKWOOD CABINETRY INC.
LAMINATE CLAD CASEWORK
MATERIALS, HARDWARE AND CONSTRUCTION METHOD

FABRICATION

- A. Fabricated to AWI Custom quality standards, with noted exceptions exceeding custom grade
- B. Cabinet style: 3mm Reveal overlay
- C. Underside of wall cabinet finish style: Type A flush, finished with matching HPDL
- D. Grain direction of doors and drawers: vertical, matched if specified
- E. Cabinet backs, wall hung: captured in grooves all four sides. Cabinet backs, floor standing: captured in grooves on both sides and bottom, securely fastened
- F. Wall mounted hang rail: ¾" panel product 4" wide.
- G. Cabinet tops and bottoms are joined to internal cabinet components with 8mm hardwood dowels, securely glued. Seven (7) dowels are used for a 24" deep cabinet and four (4) for a 12" deep cabinet. Conformat screws set 37mm from each end, spaced 128mm on center secure unfinished ends.
- H. ADA sink bases have removable access panel

HARDWARE

- A. Hinges: Blum 71T5580B 120 degree concealed hinge, 3 dimensional adjustment, self closing. Doors over 42" in height will have three hinges per door.
- B. Pulls: 102mm wire pull, satin chrome finish
- C. Drawer Slides: Blum 320 Metabox epoxy powder coated metal sides, with built in positive stop both directions and self closing feature. Slides are rated at 100 lbs.
- D. File hardware: Blum Metabox epoxy powder coated steel hanging rails with synthetic glide profiles suitable for legal or letter size filing.
- E. Adjustable shelf supports: 5mm nylon coated steel pins; friction fit into cabinet end panels and vertical dividers, on 32mm centers. Structural load testing to 1040 pounds (260 lbs per support) without failure.
- F. Locks: National CB240 disc tumbler cylinder cam lock. Each lock is furnished with two keys.
- G. Coat Rods: 1 5/16" diameter, 14 gauge chrome plated steel in captive mounting hardware.
- H. Worksurface supports: textured powder coated steel bracket; each pair exceeds 1000 lbs load limit
- I: Coat hook: Ives 571 wall mount, cast aluminum

MATERIALS

- A. Semi-exposed surfaces: all tops, decks, ends, fixed and adjustable shelves, drawer backs and bottoms are thermally fused white melamine on ¾" 47 lb. industrial grade particleboard. Backs are white melamine on ¼" MDF with ¾" thick nailers. Adjustable shelves over 35" wide are 1" thick.
- B. Exposed surfaces are HPDL VGS/high pressure white liner on ¾" 47 lb. industrial grade particleboard. Exposed backs are HPDL VGS/high pressure backer on ¼" medium density fiberboard with balance sheet.
- C. Detached cabinet toe: ¾" marine grade plywood, 4" high
- D. Edges: .5mm PVC edge banding machine applied with waterproof hot melt adhesive.
 - 1. Semi-exposed surfaces are banded with .5mm white PVC edge banding
 - 2. Exposed surfaces are banded with .5mm color matched PVC edge banding.
 - 3. PVC edge banding is not available to match all laminate colors; please verify color with manufacturer.
- E. Countertops: Surface material is GP50 high pressure decorative laminate with balanced backer sheeting. Core material is 47 lb. industrial grade particleboard 1 1/8" thick. Core material at sinks is 1 1/8" thick moisture resistant (MR) particleboard. Edge material is 3mm PVC edge banding.