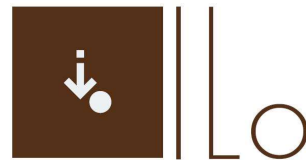


Fixtures & Equipment Selections Prepared for:

Cherokee Nation Wilma P. Mankiller Clinic
Stilwell, Oklahoma

Presented by:

Interior Logistics
1316 E. 35th Pl.
Tulsa, OK 74105
(918) 382-9120



Interior Logistics

2201

Flammable Liquid Safety Cabinet, 30 Gal., 1 Shelf, Sliding Self Close, Yellow

Model Number:
1930X

UPC Code:
048441691227

Description:
Eagle's 30 Gallon, sliding self-close, Flammable Liquid Safety Cabinet is constructed of 18-gauge (1 mm) steel. The sides, top, bottom, and doors are double-walled with a 1-1/2 in (3.8 cm) air space between walls. Includes two vents, each have 2 in (5.1 cm) threaded fittings and a fire baffle and cap. Cabinets have a high gloss powder coat finish with red trilingual warning, plus grounding attachment, 3-point latch system, and 2-in (5.1 cm) raised, leakproof door sill. Each shelf is adjustable on 3 in (7.6 cm) centers, supported by 4 brackets, with a 350 lbs (159 kg) safe allowable load. Cabinets are FM-Approved and meet NFPA Code 30 and OSHA requirements.

Capacity:
30 gal. (113.6 L)

Color:
Yellow

Door Style:
Bi-Fold

Inside Dimensions:
39.5" W x 14.6" D x 39.5" H (100.3 x 37 x 100.3 cm)

Lock:
True

Number of Shelves:
1

Shelf Depth:
14" (35.6 cm)

Shelf Model Number:
29937

Uniform Fire Code:
True

Dimensions

Width:
43" (109.2 cm)

Depth:
18" (45.7 cm)

Height:
44" (111.8 cm)

Weight:
246 lbs. (111.6 kg)



SOURCE: https://store.interstateproducts.com/products/Standard_Flammable_Cabinets/Eagle-3010-Safety-Cabinets-30gal

2254



2254a



2254b



EQMST

EQNO	DESCRIPT	SIZEA	MFG	MFGNO
2254	Shelving Unit, Open Wire Shelves, Mobile, With Liner for Bottom Shelf	36"w X21"d x69"h	EAGLE GROUP	DT2136-CSBP
2254a	Shelving Unit, Open Wire Shelves, Mobile, w/drawer glide system & bins(optional solid bottom shelf)	60"w x21"d x69"h	EAGLE GROUP	ECT2160C or ECTS2160C
2254b	Shelving Unit, Open Wire Shelves, Mobile, w/drawer glide system & bins(optional solid bottom shelf)	60"w x21"d x72"h	EAGLE GROUP	ECDT2160C or ECDS2160C

2256a



2256b



2256c



Budget Worksheet 07-08-14

EQNO	QTY	DESCRIPT	MFG	MFGNO
2256a	1	Shelving Unit,Mobile, Adj Shelves, Bins, Bumper, Door Type TBD	Innerspace	ROAM2
2256b	3	Shelving Unit, Open Wire Shelves, 4 Shelf Unit, Static	EAGLE GROUP	2448C74
2256c	20	Shelving Unit, Open Wire Shelves,Static; Starter Units Total of 4800 lb cap: Add on units 3000lb cap	ULINE	H-6761-86

2294 DIAPER PAIL-STEP



- Self-sealing system locks in odors. Bag stays sealed when lid is opened - no stinky blast of odor
- Lavender scent baking soda puck absorbs odors so your nursery stays fresh
- Lavender scent universal refill system works with both the Arm & Hammer Snap, Seal, & Toss Bags and the Arm & Hammer Refill Rings. BONUS Toss™ Disposable Diaper Pail Included!
- Awarded 2020 Best Overall Diaper Pail by Good Housekeeping

2403 HEAVY DUTY CART



The Lakeside 4959 utility cart is recommended for heavy-duty use and features a 1000 lb. weight capacity.

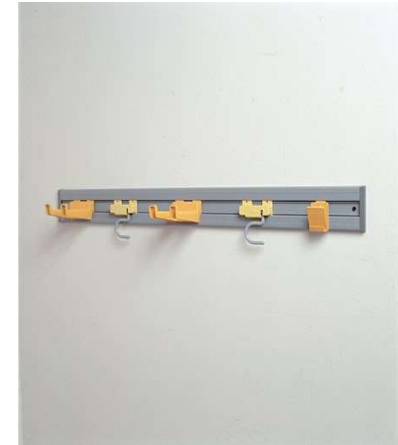
Overall Dimensions:

Length: 55"

Width: 22 3/4"

Height: 39 3/8"

2609 34" CLOSET ORGANIZER



34" CLOSET ORGANIZER / TOOL HOLDER KIT, GRAY

SKU: FG199300GRAY

Helps increase productivity and efficiency through better tool storage and access

S-hooks holds 5/8" to 1 1/4" (16 cm to 32 cm) handle diameters

Deep double hooks afford easy accessibility

Clip holder for work notes and instructions

2810

Black and Decker
HNV215BW52 Compact
Cordless Lithium Wet &
Dry Hand Vacuum



For dry debris and wet messes alike, this cordless vacuum never lets you down. Lithium technology keeps suction strong, and the transparent bagless dirt bowl makes cleaning fast and easy. Just empty, rinse and go.

Features Compact Cordless Lithium Wet & Dry Hand Vacuum
Lightweight + portable design makes this easy to use

Specifications**Weight:** 2.3 lbs
- SKU: WHL3228
Designed for quick + easy cordless cleaning
Ideal for quick clean ups and spills
Lightweight + portable design makes this easy to use
Included wall mountable charger allows for 1 step charging and storage
Washable bowl + filter allows for thorough cleaning
The translucent bagless dirt bowl makes it easy to see the dirt level and is easy to empty
For dry debris and wet messes alike this cordless hand vacuum never lets you down.

Lithium technology and the transparent bagless dirt bowl makes cleaning fast and easy. Just empty rinse and go.

3005

Linen Cart & Cover



Nexel® Galvanized Steel Linen Cart with Nylon Cover, 4 Shelves, 60"L x 24"W x 69"H

Linen Cart Features: Four durable, corrosion-resistant 60" x 24" solid galvanized 18-gauge steel shelves
Clear epoxy coated shelves are adjustable in 1" increments
Each shelf holds up to 400 lbs of evenly distributed weight
Four 5" swivel casters (2 with brakes) make for easy maneuverability
Casters are rated for a maximum total weight of 1,200 lbs per unit (300 lbs each)
Easy assembly without tools
Overall dimensions: 60"L x 24"W x 69"H (with casters)

Nylon Cover Features: Made of water resistant 400 Denier blue nylon
Cover with reinforced corners and double stitching for maximum durability
Includes two 8-1/2" x 11" document pockets
Hook and loop closures provide easy accessibility

3005a

PT Linen Cart with Cover



Nexel® Chrome Wire Linen Cart with Nylon Cover, 4 Shelves, 36"L x 18"W x 69"H

Linen Cart Features: Four durable, corrosion-resistant 36" x 18" wire shelves
Chrome finished shelves are adjustable in 1" increments
NSF certified
Each shelf holds up to 600 lbs of evenly distributed weight
Four 5" swivel casters (2 with brakes) make for easy maneuverability
Casters are rated for a maximum total weight of 1,200 lbs per unit (300 lbs each)
Easy assembly without tools
Overall dimensions: 36"L x 18"W x 69"H (with casters)

Nylon Cover Features: Made of water resistant 400 Denier blue nylon
Cover with reinforced corners and double stitching for maximum durability
Includes two 8-1/2" x 11" document pockets
Hook and loop closures provide easy accessibility

3016

Linen Hamper



Blickman 2301SS Triangular Space-Saver Hamper, Stainless Steel, 18" D x 32" H

Blickman 2301SS Triangular Space-Saver Hamper offers hands-free operation with a convenient non-slip pedal. All stainless steel construction. Bumper guards on the stainless steel lid and legs protect equipment and walls. Solid shelf on bottom provides extra stability with heavy loads. This hamper rolls effortlessly on three, 3" hard rubber swivel casters. Stainless steel lid with pin-drop, pneumatic top for quiet operation. Optional nylon hamper bag is available (model# B2224897).

3017

Laundry Cart



Forbes Laundry Cart 1100 Cloth 33" H x 24-3/4" Dia

Forbes Laundry Cart has a 1" round superstructure finished with a silver powder-epoxy paint.

Features: 1" reinforced square steel tube base
7 bushel size H.D. cloth bag in black
4" all swivel gray wheels

3020, 3021, 3023

- 3020 Commercial Washer Extractor
- E-SERIES HIGH PERFORMANCE 20-POUND CAPACITY WASHER-EXTRACTOR THE BOTTOM LINE—BOOSTED PRODUCTIVITY How can E-Series Washers produce more laundry per hour when compared to larger, lower-performance machines? The answer lies in wash and dry throughput. E-Series Washers reach much higher extraction speeds—resulting in greater moisture removal, shortened dry time and boosted productivity. E-Series Washers move soiled laundry through the wash and dry process faster. This boosts productivity, reduces labor costs and extends linen life by minimizing exposure to dryer heat and tumbling. Designed to drive down gas, water and electrical costs while improving productivity, Continental E-Series HighPerformance Washer-Extractors deliver high-speed extract, an easy-to-install freestanding design, unmatched durability and the ultimate in programmability!
- 3021 Commercial Electric Dryer
- E-SERIES HIGH PERFORMANCE 25-POUND CAPACITY DRYING TUMBLER Equipped with an oversized door, dryer window and cylinder light, E-Series Drying Tumblers are not only easy to use, they are incredibly efficient! With up to 25 pounds of capacity and gas or electric heat, E-Series Dryers are the right choice for any on-premise laundry with small load requirements. Loaded with industrialgrade features that ensure durability and simplify maintenance, E-Series Dryers are built to last.

<https://www.cgilaundry.com/commercial-eseries-washers.html>

EQNO	DESCRIPT	MFG	MFGNO
3020	Washer, Extractor, Front Load, Commercial, Energy Star Rated, 20 lb capacity	Continental-Girbau	EHO20
3021	Dryer, Front Load, Commercial, Electric, 7 Cu Ft Capacity	Continental-Girbau	KDE
3023	Dispensing System, Laundry Detergent (LIKELY TO BE SOURCED THRU OWNER JANITORIAL SUPPLIER)	ZEP Inc	1045914

3023-LAUNDRY DETERGENT DISPENSER

<http://www.zepequipment.com/products/category/laundry>

ZLS On-Premise Global 4 Pump
 Provides operator-friendly remote control of 4 product pump systems and up to 8 product formulas. Proven peristaltic pumps that uses the highest quality squeeze tubes and gear motor.
 Easy to install and service
 Accurate and reliable dispensing
 Serves a wide variety of laundry applications and washer sizes



3032

BRUTE® 65 GAL MEDICAL WASTE ROLLOUT CONTAINER WITH CASTERS RED
SKU: 1971977



3039a

FIRE RESISTANT WASTEBASKET 28 QT BLACK
SKU: FG254300BLA
The Rubbermaid Commercial Fire-Resistant Wastebasket features a contemporary shape with a UL rating.
UL® Classification ensures fire safety
Textured finish for enhanced aesthetics



3036b

24 Gallon Container

Secure document containers provide secure storage for confidential files waiting to be shredded



3040

STEP-ON CONTAINER 23 GAL RED
SKU: FG614600RED
The Rubbermaid Commercial Step-On Container provides sanitary waste management. The step-on foot pedal reduces contamination and improves working conditions.



3040a

STEP-ON CONTAINER 23 GAL BEIGE
SKU: FG614600BEIG
Compliant with industry standards, such as FM, OSHA, and OBRA.



3041

STEP-ON CONTAINER 8 GAL RED
SKU: FG614300RED
Ideal for medical waste containment
Compliant with industry standards, such as FM, OSHA, and OBRA



3041a
SLIM JIM® 8 GAL STEP ON RESIN
END STEP BEIGE
SKU: 1883457



3043
HALF ROUND OPEN TOP 12 GAL
PERFORATED TEXTURED BLACK
SKU: FGSH12EPLTBK



3043B
CROWNE OPEN TOP 12 GAL BLACK
SKU: FGAOT15BKPL



3044
SILHOUETTES SQUARE OPEN TOP 20 GAL
TEXTURED BLACK
SKU: FGSC18EPLTBK



3045
MARSHAL® CLASSIC CONTAINER
WITHOUT LINER 25 GAL BROWN
SKU: FG817088BRN



3046
BRUTE® EXECUTIVE SERIES™ CADDY BAG BLACK
SKU: 1867533
VENTED BRUTE® 32 GAL GRAY
SKU: FG263200GRAY
BRUTE® 32 GAL LID GRAY
SKU: FG263100GRAY



3047
ROTOMOLDED TILT TRUCK, 1/2 CUBIC
YARD, BLACK
SKU: FG9T1700BLA



3047A
BRUTE® 44 GAL LID BLACK
SKU: FG264560BLA
VENTED BRUTE® 44 GAL BLACK
SKU: FG264360BLA
BRUTE® DOLLY BLACK
SKU: FG264000BLA



3061
VENTED SLIM JIM® 16 GAL BLACK
SKU: 1955959
Venting channels make removing liners from
the container up to 80% easier, improving
productivity and reducing the risk of worker
injury.



3062
VENTED SLIM JIM® 23 GAL GRAY
SKU: FG354060GRAY
SLIM JIM® SWING LID GRAY
SKU: FG267360GRAY



3079
WAVEBRAKE® 35 QT SIDE PRESS
BUCKET AND WRINGER, DRAIN,
YELLOW
RUBBERMAID SKU: 2031764



3083
ZOGICS-Sanitizing for Gym Areas;Wipe &
Hand Sanitizer Dispenser, Waste Container;
Textured Black-TCS-B-30063



3087 & 3089 GLOVE DISPENSERS

Single: 5-1/2"W x 10"H x 3-3/4"D

Quadruple: 22-1/4"W x 10"H x 3-3/4"D

AliMed® Glove Dispensers Keep gloves available anywhere in your facility with our glove dispensers made of clear, durable PETG plastic. These dispensers fit glove boxes of any size, mount on any wall horizontally or vertically, and are made of durable, clear plastic for easy viewing

SOURCE: <https://www.alimed.com/glove-dispensers.html>



3088

Covidien SharpStar Wall Mount In-Room Sharps Cabinet with 5-Quart Sharps Container, Beige

SOURCE: <https://www.globalindustrial.com/p/medical-lab/medical-equipment/sharps-biohazard-disposal/wall-mount-in-room-cabinet-with-5-quart-sharps-container-beige>



3100

(TYPICAL)B-72860

Surface-Mounted Roll Paper Towel Dispenser

SOURCE:

<http://products.bobrick.com/washroomaccessories/Pages/ProductDetails.aspx?Product+Number%3dB-72860>



3102

(TYPICAL HAND SOAP DISPENSER)

SOURCE:

<https://www.globalindustrial.com/p/janitorial-maintenance/bathroom/dispensers/purell-touch-free-soap-dispenser-es8-graphite-1200ml-7734-01>



3102A

(TYPICAL HAND SANITIZER DISPENSER)

SOURCE:

<https://www.globalindustrial.com/p/janitorial-maintenance/bathroom/hand-sanitizers/purell-touch-free-hand-sanitizer-dispenser>



COFFEE BREWERS & ACCESSORIES

3215

COFFEE BREWER-BLOOMFIELD 8792

Gourmet 1000™ Dual Automatic Airpot
Coffee Brewer (with Hot Water Faucet)

SOURCE: <https://www.webstaurantstore.com/bloomfield-8792af-gourmet-1000-dual-automatic-airpot-coffee-brewer-120-240v/2878792AF.html>



3216

8572 Koffee King® 3-Warmer Stepped
Right Automatic Coffee Brewer (with Hot
Water Faucet)

SOURCE:
<https://www.webstaurantstore.com/bloomfield-8572d3f-koffee-king-3-warmer-right-stepped-automatic-coffee-brewer-120v/2878572D3F.html>



3216d

BUNN pour over coffee pot
VP17-1, SST (1 Lower Warmer)
SOURCE:

<https://www.webstaurantstore.com/bunn-13300-0001-vp17-1-ss-stainless-steel-pourover-coffee-brewer-with-1-lower-warmer-120v/234133000001.html>



3216C

AIR POTS SOLD SEPARATELY

SOURCE: <https://www.webstaurantstore.com/choice-2-2-liter-glass-lined-stainless-steel-airpot-with-lever/234AP822.html>



3216b

Wilbur Curtis CAR-3-BLK AIR POT RACK

SOURCE:
<https://www.webstaurantstore.com/curtis-car-3-blk-black-11-1-2-x-20-1-2-x-11-3-4-three-airpot-rack/945CAR3BLK.html>



APPLIANCES

3250

Manitowoc-Indigo™ Series
322 Ice Cube Machine on B-
320 Bin



3255

Amana Commercial Microwave
Model RCS10TS



3266

**KITCHENAID-30-Inch 5
Burner Electric Double
Oven Convection
Range-KFED500ESS**

SOURCE:

<https://www.kitchenaid.com/major-appliances/ranges/electric-ranges/electric-double-oven-range/p.30-inch-5-burner-electric-double-oven-convection-range.kfed500ess.html>



3307 & 3307a

Manitowoc Countertop Ice makers

Source: <https://www.webstaurantstore.com/manitowoc-cnf0202a-16-1-4-air-cooled-countertop-nugget-ice-maker-water-dispenser-20-lb-bin-with-sensor-dispensing-120v/499CNF0202AA.html>



CNF0202

CNF0201

3268

T-Series: T-49DT-HCReach-In
Solid Swing Door Dual
Temperature
Refrigerator/Freezer;
Commercial, SS, 2 Doors, on
casters, 6 shelves, 1HP, exterior
temp display



3269d

LG Refrigerator LDCS24223S, 2
door, freezer in lower section,
24 Cu Ft, w/icemaker, SS



APPLIANCES CONTINUED

3310

Summit ADA compliant all-refrigerator with wrapped stainless steel exterior, towel bar handle, door storage, and digital controls

SOURCE:

<https://www.compactappliance.com/summit-all-fridge-refrigerators/AL54.html>

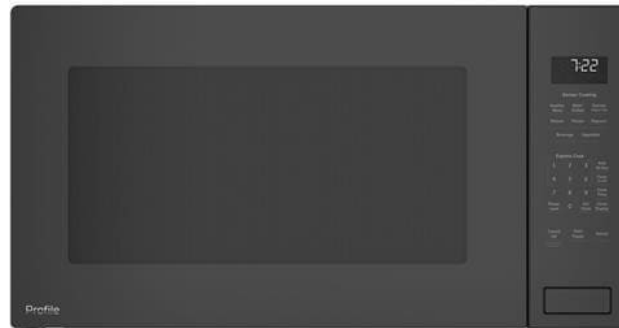


3349

GE Profile-PEB7227DLBB

2.2 cu. ft. Countertop Microwave with Sensor Cook, Instant On Controls, Extra-Large Turntable, Control Lockout, Weight & Time Defrost, and Kitchen Timer: Black

SOURCE: <https://www.ajmadison.com/cgi-bin/ajmadison/PEB7227DLBB.html>



3352B

MIELE-DISHWASHER-PG 8061, with its final rinse temperature of 185° F, is ideal for applications requiring sanitization including wineries, nursing homes, inns, community kitchens, restaurants, schools and other businesses.

SOURCE: https://www.us-appliance.com/pg8061208.html?msclkid=96753195207c19dc221c6f373cfda009&utm_source=bing&utm_medium=cpc&utm_campaign=Shopping%20Campaigns%20-%20NEW&utm_term=4580359290546466&utm_content=Bids%20Price%20Levels



3972

TRADES CART WITH 5 IN CASTERS,
INCLUDES 2 PARTS BOXES AND 4
PARTS BINS, BLACK
SKU: FG618000BLA



4133

LG TV, 22LT560C Flat Panel, LED,
Healthcare Grade, 22" Diagonal screen



4131

Television, Flat Panel, 65"; LED; Smart TV
SAMSUNG: UN65JU6500FXZA



4134

HP HC270 Healthcare Edition
Display: Television, Flat Panel,
LED, Healthcare Grade,
27";DENTAL CLOSED OPS



4132

TV, Monitor Smart LED, Digital Signing 42"
LG: 42LX530S



4136

LG 55LN549E 55" TV Monitor Ensign is
the world's first TV that comes with a
signage function. Run messages on the
TV screen in the form of a billboard
without additional hardware.
Advertisements, information and
broadcast content can be arranged on
the same screen to attract attention
and deliver specific messaging to your
customer base.



5006
 Fillmaster Digital provide extreme accuracy, ensuring the highest quality reconstitutes



5010 Secure Medication Disposal

Comprehensive medication collection kiosk and disposal solution (2 sizes available) 38 gallon-17838; 18 gallon-17818 MedSafe is an unused and expired medication disposal system. This easy-to-operate system accepts controlled (Schedules II-V), non-controlled, and over-the-counter medicines. MedSafe meets the requirements of the DEA Controlled Substances Act.

SOURCE: <https://www.sharpsinc.com/texas/houston-medical-waste-disposal>



5018
 Smart Sink, for drug waste containment



Pharmacy Equipment

5030b
 Automated Medication Dispenser
 For clinical areas



5021
 Kirby Lester Pill Counter
 KL1 Plus



5050
 Helmer Scientific Single Door
 High-Performance, Medical-grade
 Refrigerator IPR125-GX



5055 Helmer Scientific
 ADA Undercounter Refrigerator
 iLR104ADA



5054 Helmer Scientific
 ADA Undercounter
 Freezer iLF104ADA



Pharmacy Equipment cont'd

5042 SP Check Point

Interactive Prescription Verification System



5044 SP Electronic Signature Pad



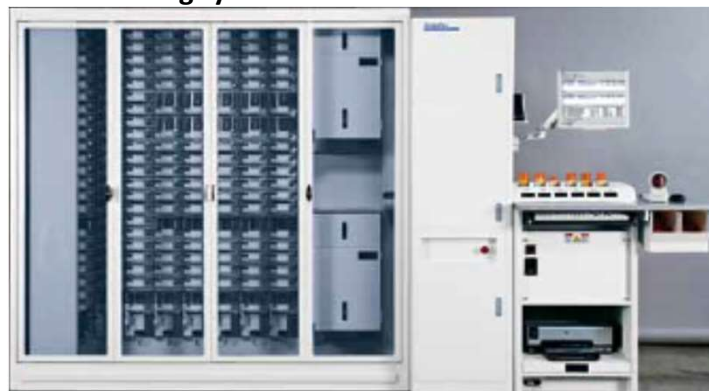
5048 SP Pharmacy Services Portal

an enterprise-wide hardware and software application of SP Central Workflow System. Product for future consideration

Script Pro Products

5027 SP200 Robotics System

Existing system



5043 SP Thermal Printer

Existing System



5049 5049xNow Serving Notice Board

ScriptPro's Now Serving Notice Board brings visible organization to the pharmacy waiting area by displaying which tickets are being processed at each pharmacy pickup window. It also can (option) play pharmacy videos or television programs. 1 Unit Existing



Dental Equipment Currently Not Included in ADEC or BENCO Packages

5274
Dry Bath Incubator
Fisher Scientific S28681



5760 PlanMeca ProX Wall Mounted Digital Radiography
5760a Plan Meca ProX Pass Thru Mount Digital Radiography for Central Consoles



6004 Global Dental Microscope
M A730C



6056 Steris-Amsco 400 Series Pass Thru Sterilizer



5761 Plan Meca ProMax
Panoramic Digital Xray



6501 Welch Allyn PRO BP3400
Portable Blood Pressure Unit



EYE CARE CLINIC EQUIPMENT
(Stored Items Not Shown)

6406a Reliance 7800-IC
Floor Stand



6406 Reliance 7000 HFC
Eye Exam Chair



6437 Reliance 4246
Optometrist Stool



6439 TOPCON AIT-250W
Automatic Instrument Table



6450 WESTERN OPTICAL
Prime Air 2400
Air Warmer For Frames



6422 TopCon
RKT-Top Con 800KR800S



6429a Acuity Pro System
Version 10 now available



6406c Reliance CS1ZZMO1
Chair Glide



6490 TopCon CL 300 Lensometer



PHYSICAL THERAPY & FITNESS EQUIPMENT

7102a SciFit Pro1 Upper Body Unit



7103 PreCor UBK 885 Upright Bike



7103a BH LK700R Recumbent Bike



7113 Parallel Bars-Existing



7107 Box Flex Existing Unit



7107b Total Gym Encompass Clinical Pkg



7103c ProCor RBK885



7103d Air Assault Bike



7108b Preston 3536
Chattanooga Towel Rack



7108 Chattanooga
Chilling Unit



7108a Hydrocollator-Existing



PHYSICAL THERAPY & FITNESS EQUIPMENT CONTINUED

7115a Hausman 6053

Three Section Hi-Lo Multi-Position Treatment Table



7120a Clinton 7019F

Double Sided Mobile Cuff Weight/Dumbbell and Band Rack



7137b Patterson Medical 8199

Medi Ball Rack



7122 Sammons Preston C7297

PT Equipment Storage Rack



7118a Chattanooga 2760k

Multi Stimulator & Ultrasound



7120b Body Solid GDRT6 Medicine Ball Tier

Progressive Weight Rack with Upper Ball Storage



7129b Stepper, Recumbent; Existing Unit



7129a PRECOR Elliptical Trainer



7163 Body Solid EXM3000LPS

Gym System-7 Stations



7128b PRECOR

TRM 681 TREADMILL



8166 Metro Procedure Cart-Basix
Owner to review options & colors
on detailed spec sheet



8202 AED-Philips Frx



8202a JL Industries 1417F12
AED Semi Recessed Cabinet



1417F12

8791 Pulse Oximeter



8700 Welch Allyn
Connex Spot Monitor



8301 Medicus Health 6 Flag
Exam Room Flags



8261 ConMed
Hyfrecator 2000



8572 Midmark Ritter 253 Table Moun
LED Exam Light



8801 Spectrum Infusion Pump



8570b Midmark 255
Ceiling Mount Procedure Light



8572 Welch Allyn 78810
Cordless Illumination System



8705 Philips VS4
Vital Signs Monitor



8911 Scale Tronix 6702W
Wheel Chair Scales with
Stadiometer



8777 Midmark-Wall Mount Heine
Otoscope Ophthalmoscope EN200



8915 Scaletonix 5702
Bariatric Stand on Scales



9127 Welch Allyn DS58-MC
Portable Sphygmomanometer



9221 Midmark M11 Sterilizer



9299 McKesson 407332
IV Pole 4 Hooks



9301 Pedigo P-1069-A-SS
Mayo Stand



9310 Midmark 640
Pediatric Exam Table



9312 Midmark 626
Exam Table 32" Width



9312a Midmark 225
Exam Table



9312c Midmark 630
Procedure Table



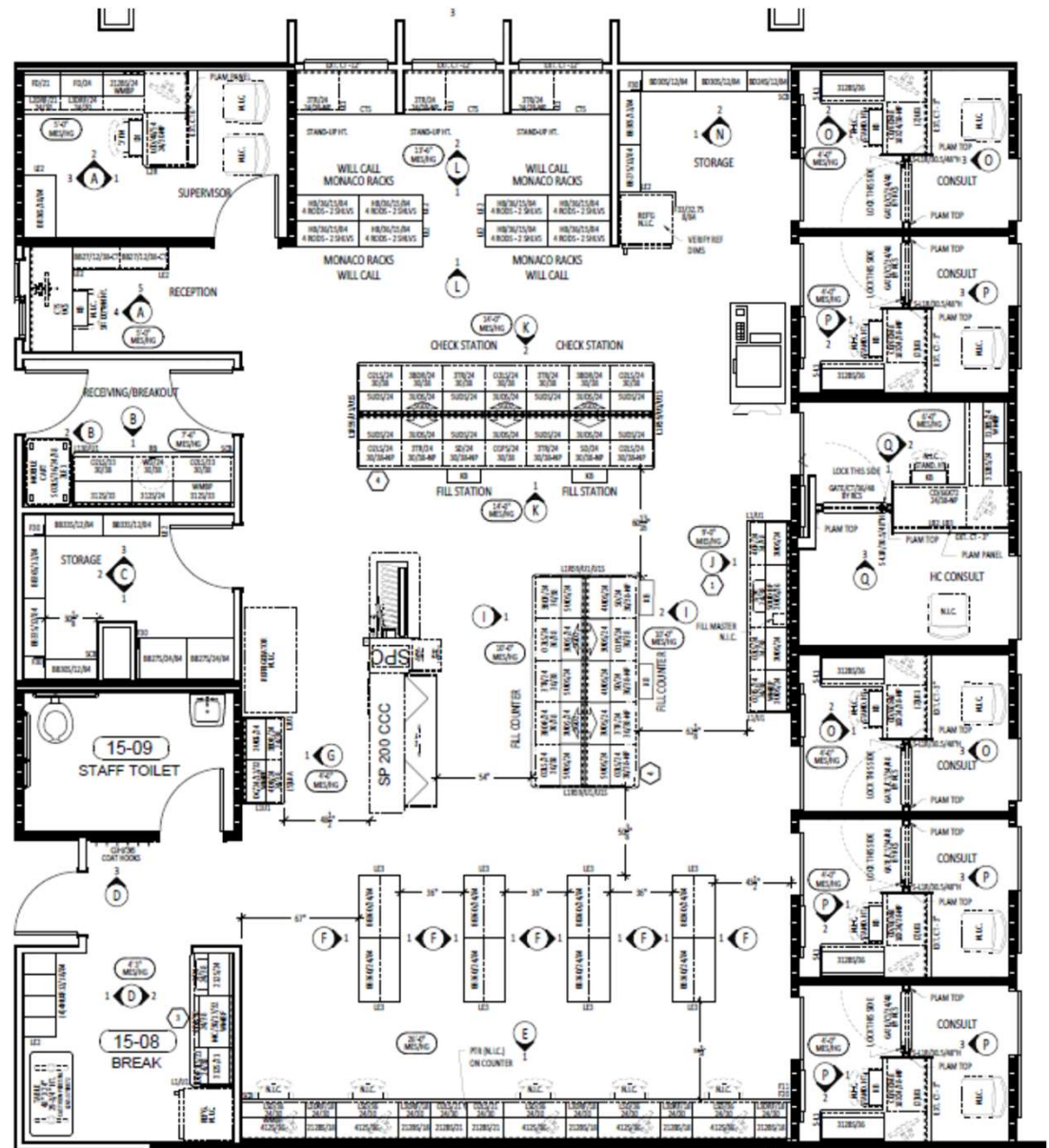
9854 Medical Device Depot 10487048
Sundry Jar Set-Glass



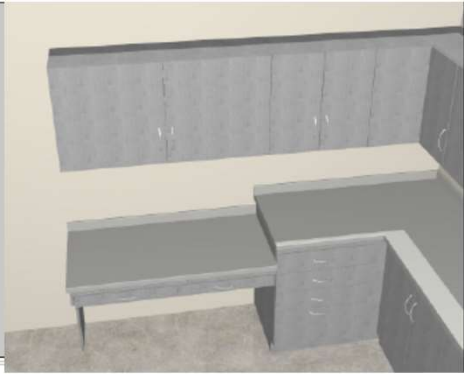
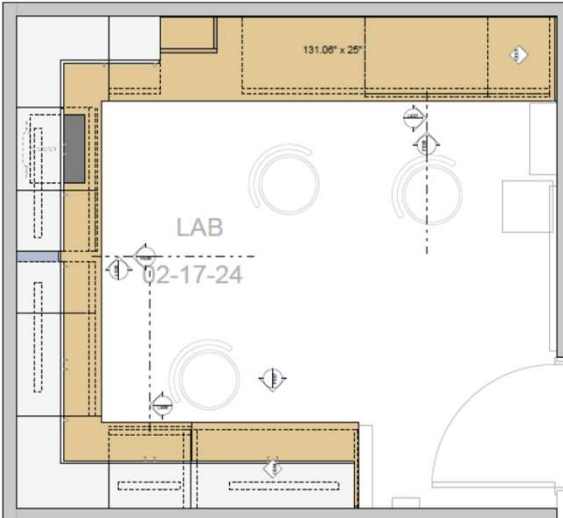
FASHION OPTICAL DISPLAYS FOR EYE CARE CLINIC: EQUIPMENT #6400



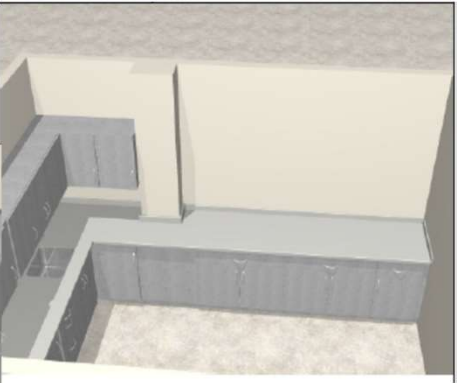
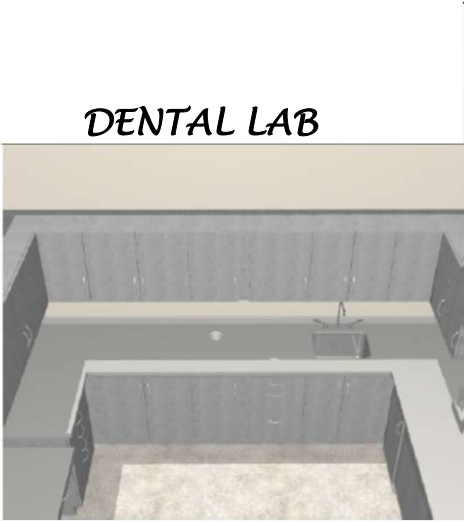
EQUIPMENT #1470 RC SMITH PHARMACY PACKAGE LAYOUT AS OF APRIL 3, 2020



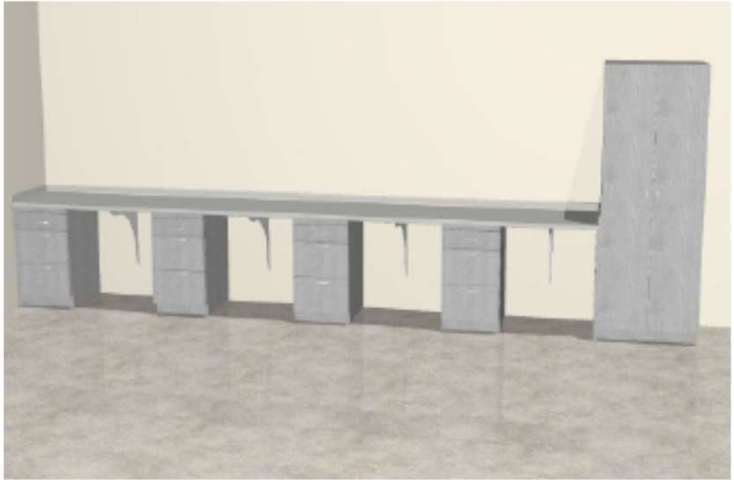
**MIDMARK DENTAL PROPOSED CABINETRY EQUIPMENT #1759
FINAL DETAILS TO BE REVIEWED WITH DENTAL STAFF PRIOR TO ORDER PLACEMENT**



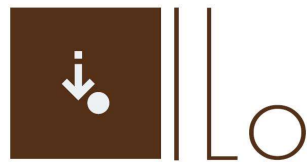
DENTAL LAB



<TECH WORKAREAS>



Interior Logistics
1316 E. 35th Pl.
Tulsa, OK 74105
(918) 382-9120



Interior Logistics