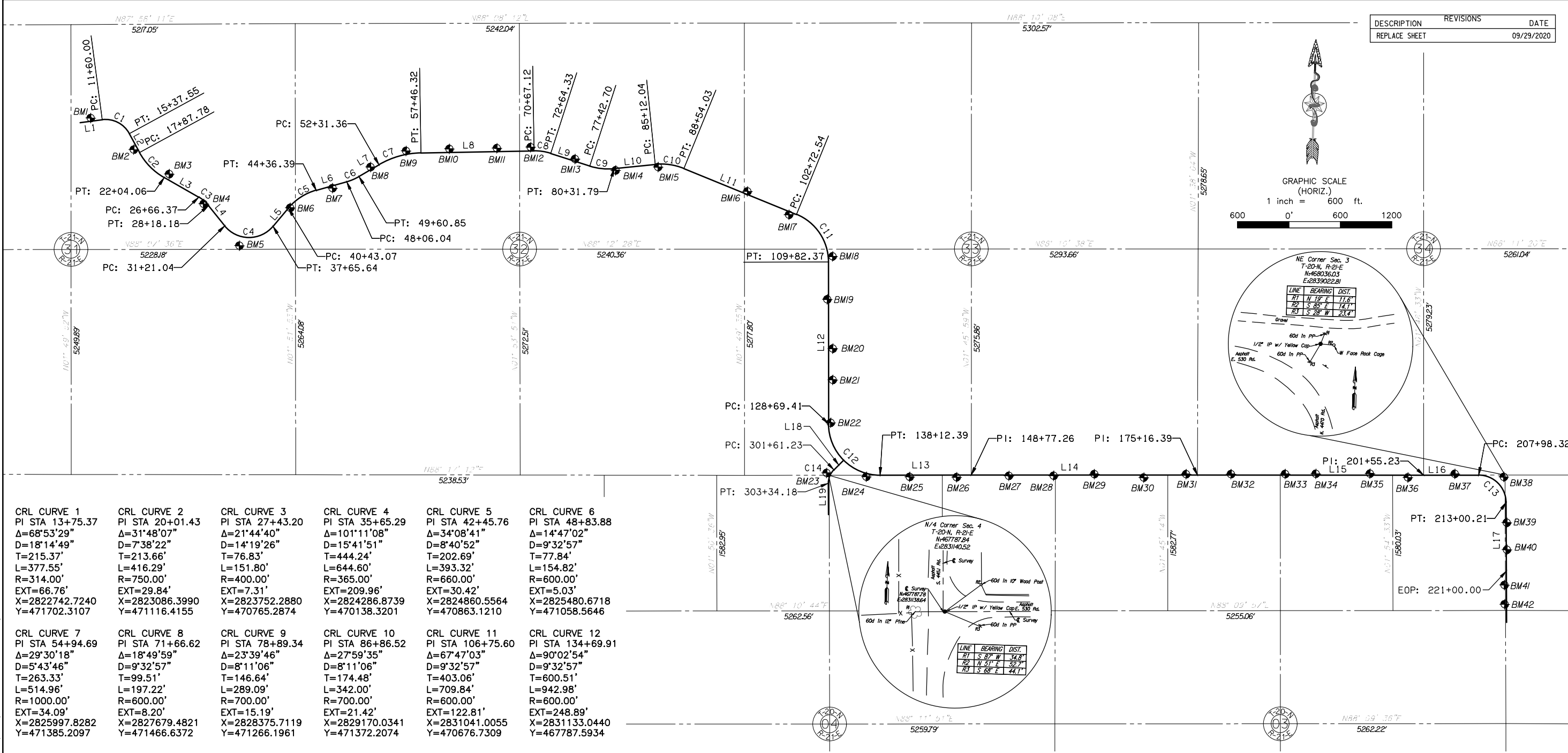
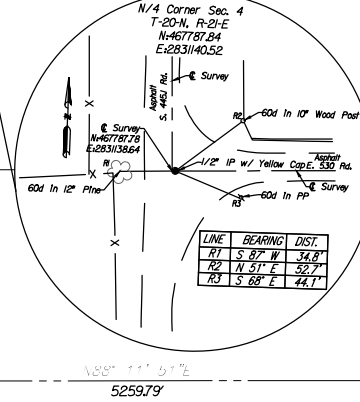
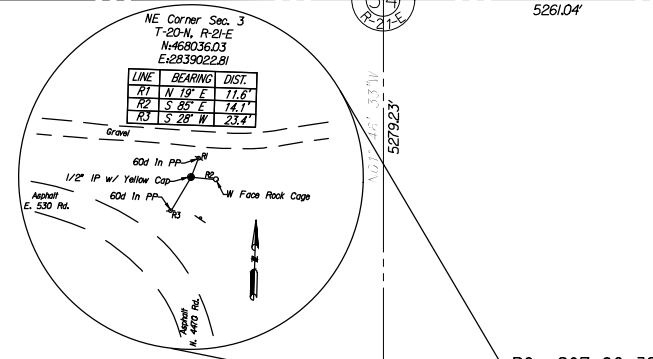
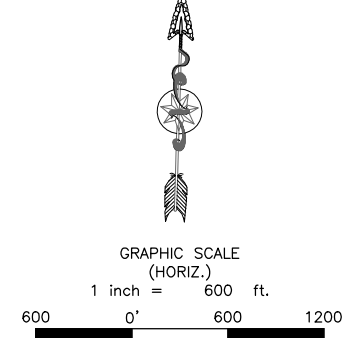


Thursday, September 24, 2020 10:13:14 AM
 V:\13-809E Chimney Rock Rd - Ph 2 - Mayes\CIVSD\PLANS\809-Survey-Alignment Data Sheet.dwg



DESCRIPTION	REVISIONS	DATE
REPLACE SHEET		09/29/2020



CRL CURVE 1 PI STA 13+75.37 Δ=68°53'29" D=18'14'49" T=215.37' L=377.55' R=314.00' EXT=66.76' X=2822742.7240 Y=471702.3107	CRL CURVE 2 PI STA 20+01.43 Δ=31°48'07" D=7'38'22" T=213.66' L=416.29' R=750.00' EXT=29.84' X=2823086.3990 Y=471116.4155	CRL CURVE 3 PI STA 27+43.20 Δ=21°44'40" D=14'19'26" T=76.83' L=151.80' R=400.00' EXT=7.31' X=2823752.2880 Y=470765.2874	CRL CURVE 4 PI STA 35+65.29 Δ=101°11'08" D=15'41'51" T=444.24' L=644.60' R=365.00' EXT=209.96' X=2824286.8739 Y=470138.3201	CRL CURVE 5 PI STA 42+45.76 Δ=34°08'41" D=8'40'52" T=202.69' L=393.32' R=660.00' EXT=30.42' X=2824860.5564 Y=470863.1210	CRL CURVE 6 PI STA 48+83.88 Δ=14°47'02" D=9'32'57" T=77.84' L=154.82' R=600.00' EXT=5.03' X=2825480.6718 Y=471058.5646
CRL CURVE 7 PI STA 54+94.69 Δ=29°30'18" D=5'43'46" T=263.33' L=514.96' R=1000.00' EXT=34.09' X=2825997.8282 Y=471385.2097	CRL CURVE 8 PI STA 71+66.62 Δ=18°49'59" D=9'32'57" T=99.51' L=197.22' R=600.00' EXT=8.20' X=2827679.4821 Y=471466.6372	CRL CURVE 9 PI STA 78+89.34 Δ=23°39'46" D=8'11'06" T=146.64' L=289.09' R=700.00' EXT=15.19' X=2828375.7119 Y=471266.1961	CRL CURVE 10 PI STA 86+86.52 Δ=27°59'35" D=8'11'06" T=174.48' L=342.00' R=700.00' EXT=21.42' X=2829170.0341 Y=471372.2074	CRL CURVE 11 PI STA 106+75.60 Δ=67°47'03" D=9'32'57" T=403.06' L=709.84' R=600.00' EXT=122.81' X=2831041.0055 Y=470676.7309	CRL CURVE 12 PI STA 134+69.91 Δ=90°02'54" D=9'32'57" T=600.51' L=942.98' R=600.00' EXT=248.89' X=2831133.0440 Y=467787.5934

BENCHMARK						BENCHMARK					
NO.	STATION & OFFSET LT./RT.	NORTHING	EASTING	ELEVATION	DESCRIPTION	NO.	STATION & OFFSET LT./RT.	NORTHING	EASTING	ELEVATION	DESCRIPTION
BM1	STA 10+29.84, 37.75 LT.	471683.80	2822395.63	881.06	Chiseled "X" on NE Corner of Slab	BM22	STA 128+58.10, 24.78 LT.	468399.88	2831138.33	904.50	80d in 30" Hackberry
BM2	STA 17+26.84, 43.15 RT.	471331.43	2822910.25	879.37	80d in PP	BM23	STA 133+16.55, 247.50 RT.	467812.63	2831109.38	924.77	Top Nut FH
BM3	STA 22+34.77, 63.47 LT.	471058.58	2823332.16	875.15	80d in 24" Oak	BM24	STA 136+60.12, 38.91 RT.	467783.54	2831573.51	929.81	80d in PP
BM4	STA 27+63.57, 27.96 RT.	470724.97	2823745.37	877.00	80d in 15" Oak	BM25	STA 141+58.04, 20.56 RT.	467797.97	2832079.36	933.67	80d in PP
BM5	STA 33+59.82, 109.07 RT.	470249.59	2824177.29	880.35	80d in 32" Oak	BM26	STA 147+05.90, 25.37 RT.	467811.07	2832627.09	930.78	80d in 6" Wood Post
BM6	STA 40+60.95, 13.57 RT.	470709.35	2824756.45	882.48	80d in Top of Wood Post	BM27	STA 153+16.23, 9.32 RT.	467846.28	2833236.58	922.42	Ch. "X" on Headwall
BM7	STA 46+24.45, 27.49 RT.	470954.37	2825241.51	881.04	80d in Sign Post	BM28	STA 158+38.25, 8.74 RT.	467862.99	2833758.33	925.42	Ch. "X" on NE Deck Corner
BM8	STA 51+34.13, 27.30 LT.	471215.75	2825678.41	893.09	80d in 18" Oak	BM29	STA 163+13.34, 11.10 LT.	467897.50	2834232.58	930.35	80d in Elm Cluster
BM9	STA 55+79.33, 41.05 LT.	471416.12	2826086.73	884.75	80d in PP	BM30	STA 168+89.49, 29.11 RT.	467875.11	2834809.70	938.33	80d in PP
BM10	STA 60+79.31, 41.45 LT.	471455.45	2826591.44	894.32	80d in TPED Post	BM31	STA 173+84.68, 10.83 LT.	467930.34	2835303.42	946.13	80d in 12" Peach
BM11	STA 66+33.47, 40.17 LT.	471480.98	2827145.01	900.31	80d in PP	BM32	STA 179+08.60, 11.78 LT.	467947.51	2835827.06	962.23	80d in 8" Wood Post
BM12	STA 70+27.46, 46.25 LT.	471506.10	2827538.25	895.00	80d in PP	BM33	STA 185+39.85, 12.63 LT.	467967.92	2836457.98	966.74	80d in PP
BM13	STA 75+53.95, 25.46 LT.	471383.45	2828060.46	894.50	80d in 24" Oak	BM34	STA 188+97.32, 16.09 LT.	467982.44	2836815.17	962.51	80d in 8" Wood Post
BM14	STA 80+45.36, 22.20 RT.	471265.38	2828537.45	903.08	80d in 18" Oak	BM35	STA 195+29.54, 17.75 LT.	468003.68	2837447.03	959.69	80d in 8" Wood Post
BM15	STA 85+44.23, 32.70 RT.	471320.07	2829031.91	910.93	80d in 30" Oak	BM36	STA 199+72.64, 27.32 RT.	467972.35	2837891.31	955.04	80d in 8" Wood Post
BM16	STA 96+41.37, 32.88 LT.	471067.90	2830083.04	923.33	80d in PP	BM37	STA 205+19.08, 14.52 LT.	468031.47	2838436.46	935.31	80d in PP
BM17	STA 101+92.90, 36.24 RT.	470810.94	2830575.92	919.73	80d in 15" Twin Oak	BM38	STA 210+47.18, 98.91 LT.	468014.07	2839010.19	935.41	80d in PP
BM18	STA 109+21.29, 51.49 LT.	470341.58	2831099.82	929.19	80d in PP	BM39	STA 215+36.57, 7.10 LT.	467481.36	2839061.15	954.66	80d in PP
BM19	STA 114+18.23, 13.85 RT.	469837.80	2831053.88	919.83	Ch. "X" on Headwall	BM40	STA 218+52.16, 8.03 LT.	467166.00	2839073.01	956.63	80d in PP
BM20	STA 119+92.70, 49.35 LT.	469265.63	2831135.33	919.20	80d in PP	BM41	STA 222+64.00, 22.64 RT.	466753.34	2839056.63	966.20	80d in 6" Wood Post
BM21	STA 123+57.67, 49.41 LT.	468900.84	2831147.01	919.08	80d in PP	BM42	STA 224+89.11, 21.45 RT.	466528.41	2839065.63	975.87	80d in PP

CRL CURVE 13 PI STA 211+17.56 Δ=89°51'52" D=17°54'18" T=319.24' L=501.90' R=320.00' EXT=132.01' X=2839034.8009 Y=468036.3880	CRL CURVE 14 PI STA 302+52.45 Δ=45°02'33" D=26°02'37" T=91.22' L=172.95' R=220.00' EXT=18.16' X=2831130.6049 Y=467784.9916
---	---

LEGEND	
---	CRL
---	SECTION LINE
---	1/4 SECTION LINE
---	1/16 SECTION LINE
●	BM - BENCH MARK
-	C - CURVE
-	L - LINE
-	CRL - CONSTRUCTION REFERENCE LINE

LINE DATA					
NO.	DISTANCE	BEARING	NO.	DISTANCE	BEARING
L1	160.00'	N80°42'48.83"E	L11	1418.50'	S69°36'32.11"E
L2	250.23'	S30°23'42.29"E	L12	1887.03'	S01°49'28.70"E
L3	462.31'	S62°11'49.18"E	L13	1064.87'	N88°07'37.23"E
L4	302.87'	S40°27'09.67"E	L14	2639.14'	N88°13'44.16"E
L5	277.43'	N38°21'42.26"E	L15	2638.83'	N88°13'30.70"E
L6	369.65'	N72°30'23.63"E	L16	643.09'	N88°08'59.30"E
L7	270.51'	N57°43'21.97"E	L17	799.79'	S01°59'08.79"E
L8	1320.79'	N87°13'40.23"E	L18	161.23'	S43°09'04.27"W
L9	478.36'	S73°56'20.97"E	L19	365.82'	S01°53'28.31"E
L10	480.24'	N82°23'53.35"E			

CHIMNEY ROCK HOLLOW
PROJECT No. CN-0632/0633-11
MAYES COUNTY

CHEROKEE NATION
COMMUNITY SERVICES
DEPARTMENT OF TRANSPORTATION
TAHLEQUAH, OKLAHOMA

ALIGNMENT DATA SHEET

DESIGN BY: MZV CHECK BY: RED DATE: 03/18 SHEET No. 11 of 47

