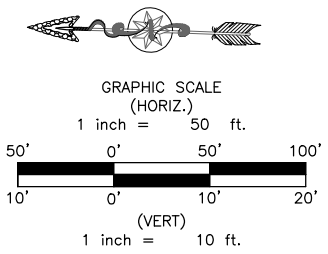


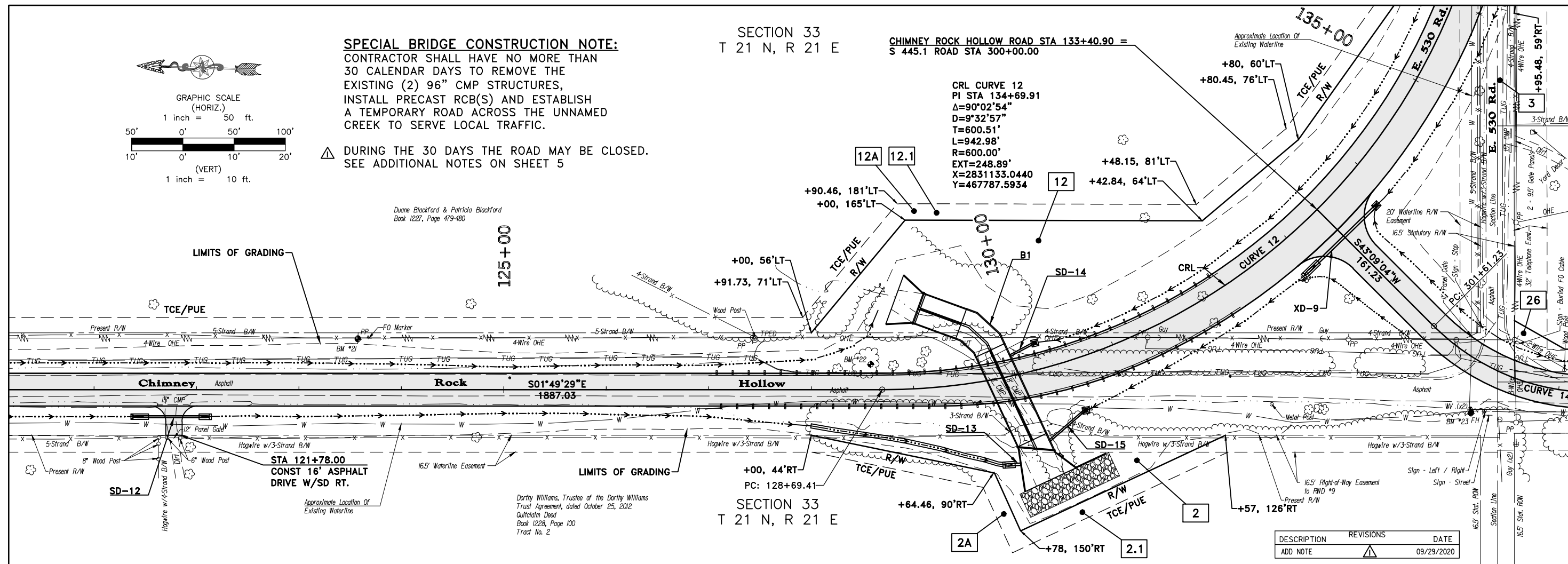
Thursday, September 24, 2020 10:09:59 AM
 V:\13-809E Chimney Rock Rd - Ph 2 - Mayes\CIV3D\PLANS\809-RDWAY-Plan&Profiles.dwg



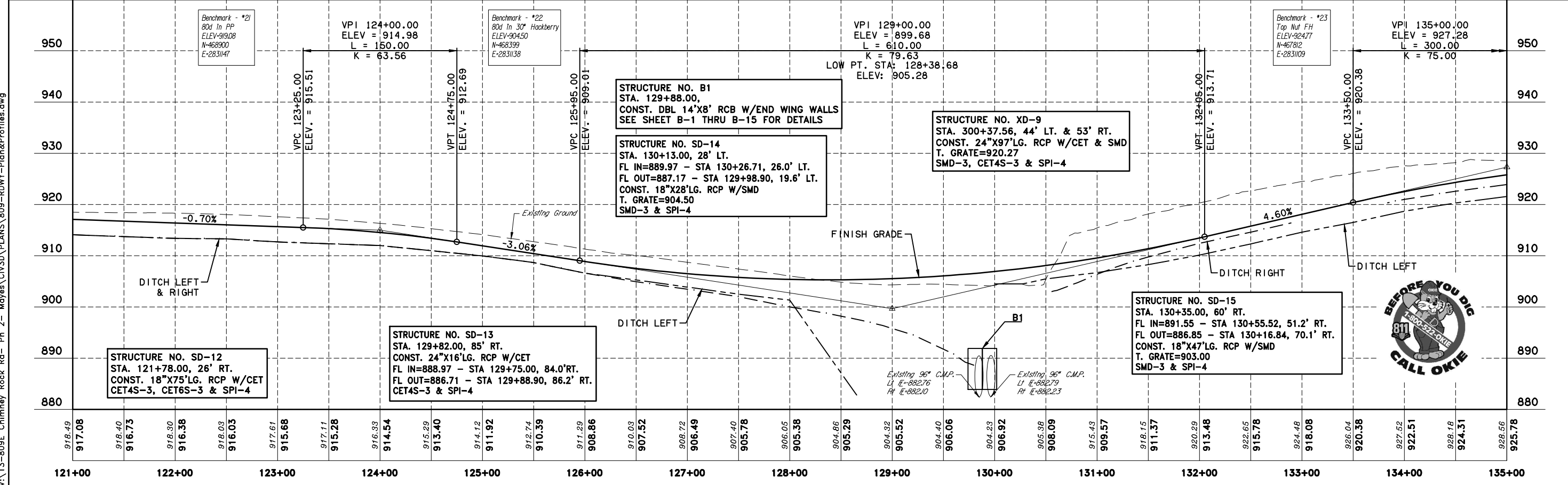
SPECIAL BRIDGE CONSTRUCTION NOTE:
 CONTRACTOR SHALL HAVE NO MORE THAN 30 CALENDAR DAYS TO REMOVE THE EXISTING (2) 96" CMP STRUCTURES, INSTALL PRECAST RCB(S) AND ESTABLISH A TEMPORARY ROAD ACROSS THE UNNAMED CREEK TO SERVE LOCAL TRAFFIC.
 DURING THE 30 DAYS THE ROAD MAY BE CLOSED. SEE ADDITIONAL NOTES ON SHEET 5

SECTION 33
 T 21 N, R 21 E

CHIMNEY ROCK HOLLOW ROAD STA 133+40.90 =
 S 445.1 ROAD STA 300+00.00



| DESCRIPTION | REVISIONS | DATE |
|-------------|-----------|------------|
| ADD NOTE | ▲ | 09/29/2020 |



STRUCTURE NO. B1
 STA. 129+88.00,
 CONST. DBL 14'X8' RCB W/END WING WALLS
 SEE SHEET B-1 THRU B-15 FOR DETAILS

STRUCTURE NO. SD-14
 STA. 130+13.00, 28' LT.
 FL IN=889.97 - STA 130+26.71, 26.0' LT.
 FL OUT=887.17 - STA 129+98.90, 19.6' LT.
 CONST. 18"X28'LG. RCP W/SMD
 T. GRATE=904.50
 SMD-3 & SPI-4

STRUCTURE NO. XD-9
 STA. 300+37.56, 44' LT. & 53' RT.
 CONST. 24"X97'LG. RCP W/CET & SMD
 T. GRATE=920.27
 SMD-3, CET4S-3 & SPI-4

STRUCTURE NO. SD-12
 STA. 121+78.00, 26' RT.
 CONST. 18"X75'LG. RCP W/CET
 CET4S-3, CET6S-3 & SPI-4

STRUCTURE NO. SD-13
 STA. 129+82.00, 85' RT.
 CONST. 24"X16'LG. RCP W/CET
 FL IN=888.97 - STA 129+75.00, 84.0' RT.
 FL OUT=886.71 - STA 129+88.90, 86.2' RT.
 CET4S-3 & SPI-4

STRUCTURE NO. SD-15
 STA. 130+35.00, 60' RT.
 FL IN=891.55 - STA 130+55.52, 51.2' RT.
 FL OUT=886.85 - STA 130+16.84, 70.1' RT.
 CONST. 18"X47'LG. RCP W/SMD
 T. GRATE=903.00
 SMD-3 & SPI-4

