




PLANS FOR
1 BEDROOM ADA
(RIGHT LIVING ROOM)
908 SQUARE FEET

SHEET INDEX

SHEET NO.	DESCRIPTION
A101	TITLE SHEET
A102	FLOOR PLAN
A103	CABINET ELEV./HVAC CLOSET FRAMING
A104	FOUNDATION PLAN
A105	FOUNDATION PLAN DETAILS/WALL SECTION DETAIL
A106	ELEVATIONS – GABLE
M101	HVAC PLANS
P101	WASTE AND VENT PLUMBING PLANS
P102	DOMESTIC WATER PLANS
P103	ISOMETRIC PLUMBING PLANS
E101	ELECTRICAL PLAN



ENGINEER

KAS Gales Company
Consulting Engineers
18772 Harmon Road
Fayetteville, AR 72704
Wk. 479.361.9977 Cell 479.422.0763
Email: carl.d.gales@gmail.com

Housing Authority of the Cherokee Nation

1 Bedroom ADA

Title Sheet

DESIGNED BY:

DRAWN BY:

SM

APPROVED BY:

CDC

DATE PREPARED:

September 2021

REVISION PER HOUSING AUTHORITY OF THE CHEROKEE NATION

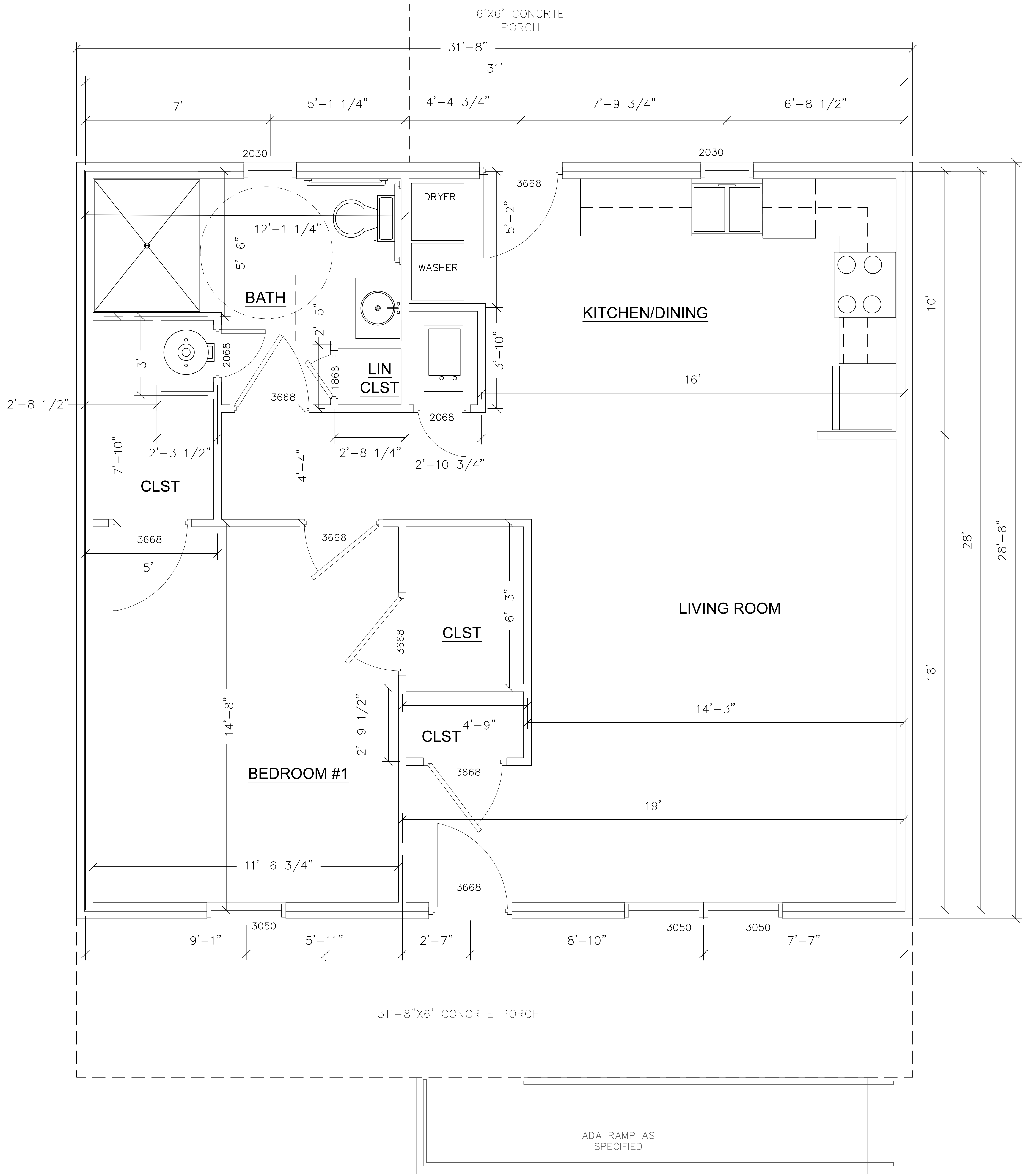
REVISION

NO.

A101

SHEET NO.

908 SQUARE FEET




NOTE:
ALL CLOSETS HAVE
SHELVES AND
HANGER RODS

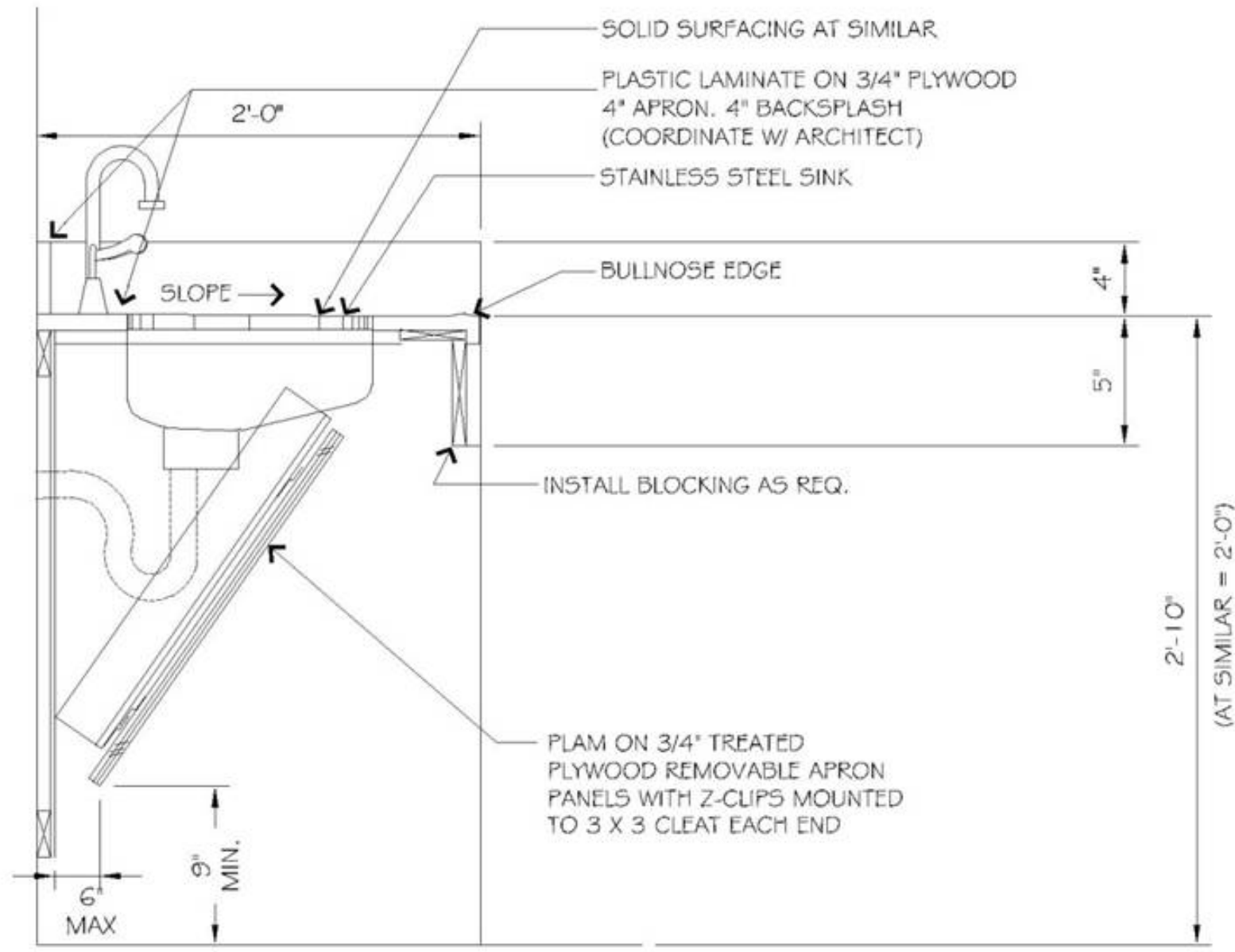
SCALE
1/2" = 1'

REVISION PER HOUSING AUTHORITY OF THE CHEROKEE NATION	NO.	0.	DATE	BY	DESIGNED BY:	APPROVED BY:
	NO.	0.	DATE	BY	CDG	CDG

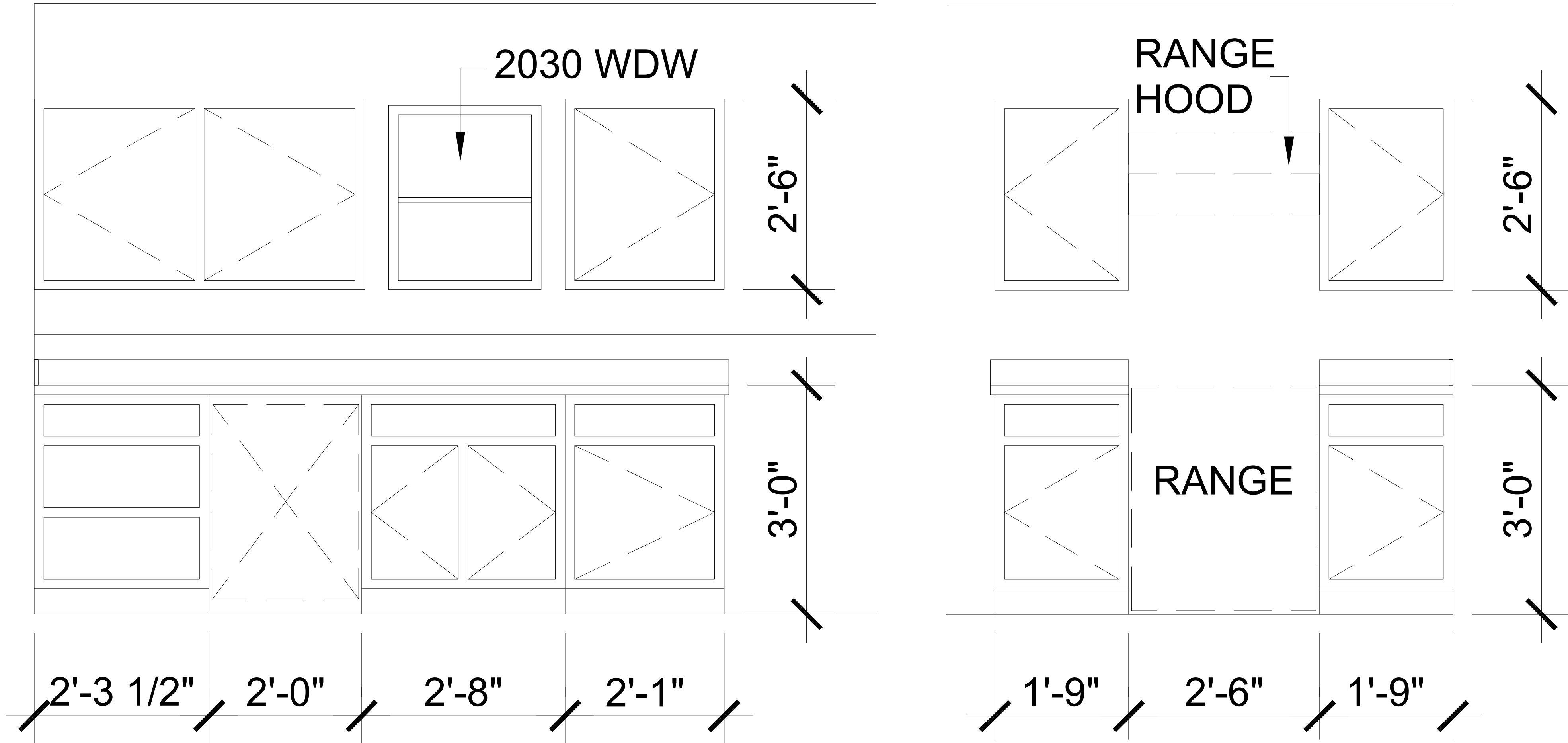
Housing Authority of the Cherokee Nation		1 Bedroom ADA Floor Plan	
DESIGNED BY:		APPROVED BY:	
DRAWN BY:		DATE PREPARED:	
SM		September 2021	



ENGINEER
KAS Gales Company
Consulting Engineers
18772 Harmon Road
Fayetteville, AR 72704
Wk. 479.361.9977 Cell 479.422.0763
Email: carl.d.gales@gmail.com

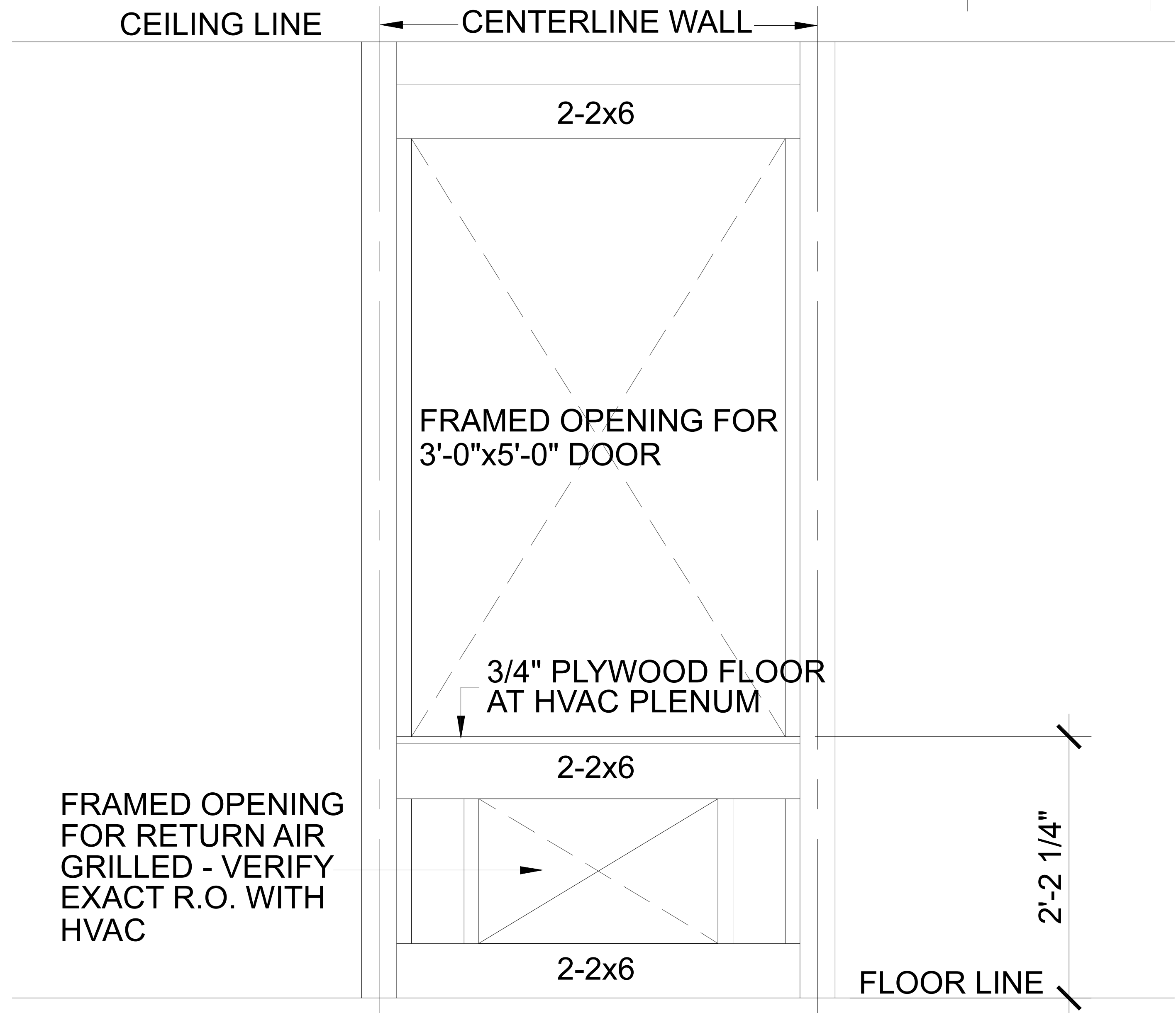


ADA CABINET SIDE VIEW
N.T.S.




NON ADA CABINET ELEVATION
SCALE 1"=1 1/2'=1'

NOTE:
ONE UNIT WILL BE LOWERED FOR ADA COMPLIANCE
WITH OPEN UNDER SINK IN KITCHEN AND BATROOM
FOR WHEEL CHAIR ACCESSIBILITY. SEE ADA CABINET
SIDE VIEW FOR DIMENSIONS.

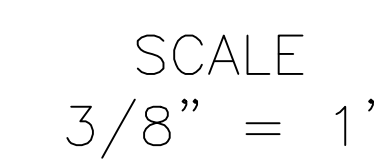


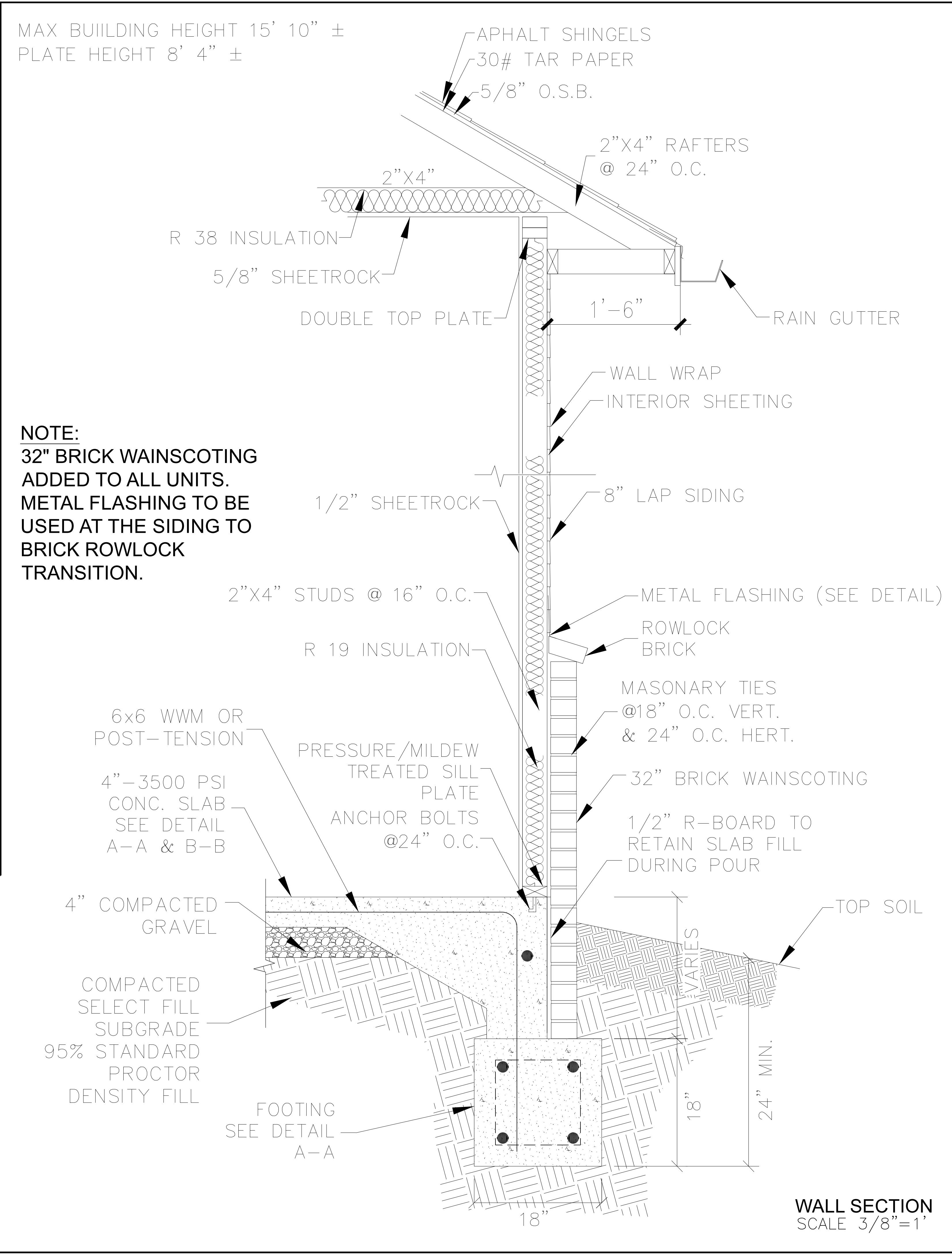
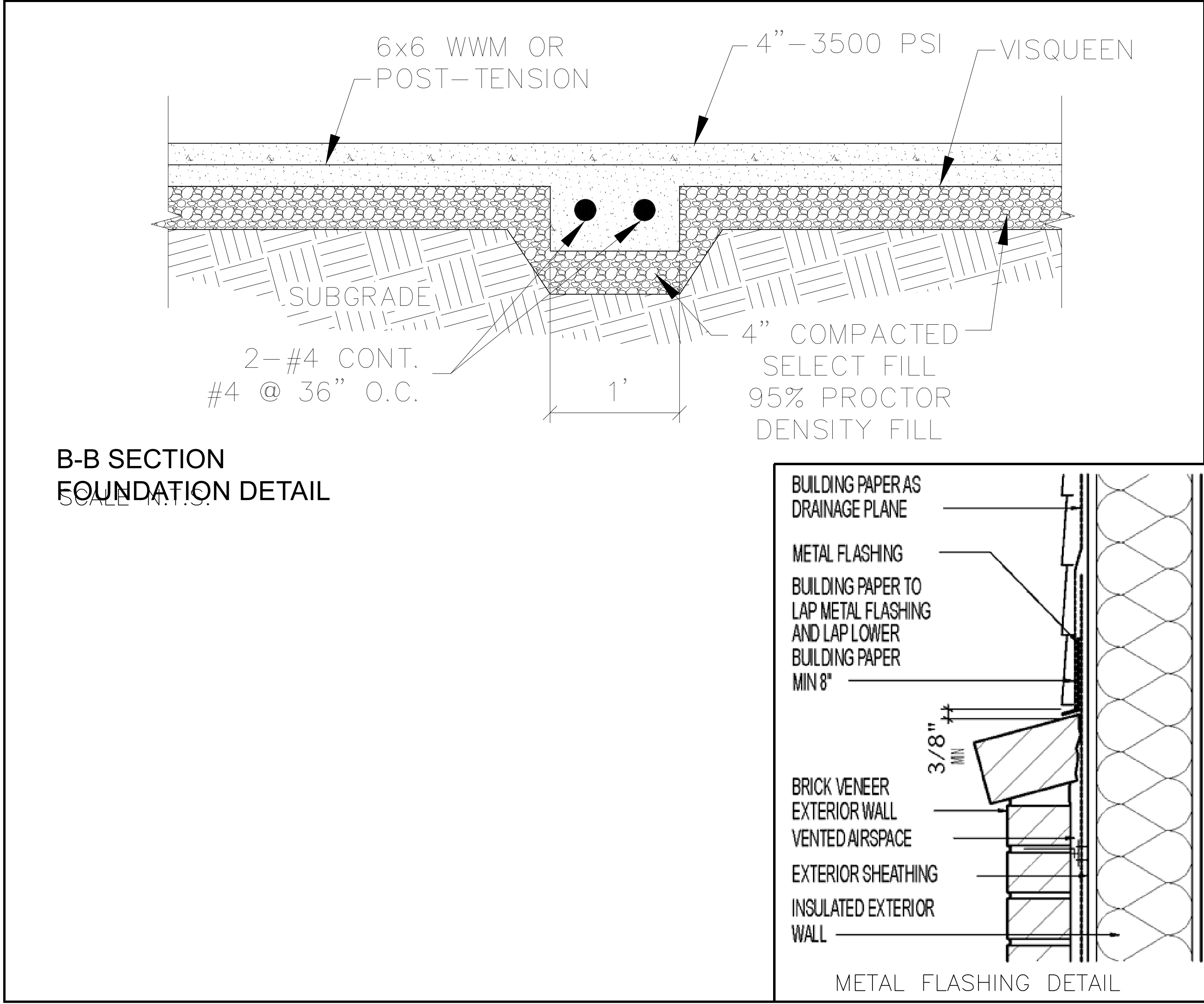
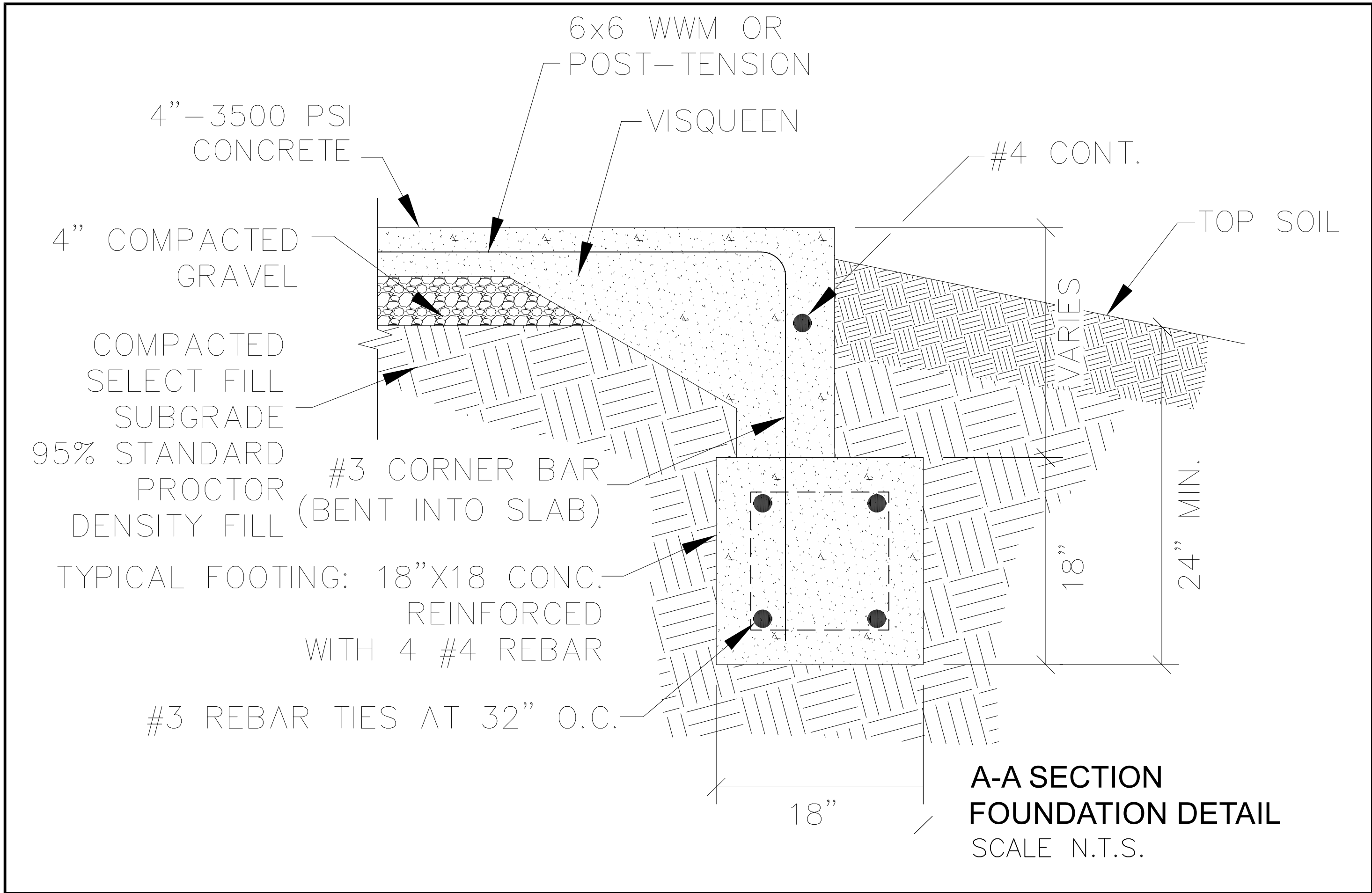
HVAC CLOSET FRAMING
SCALE 1"=1 1/2'=1'

ENGINEER

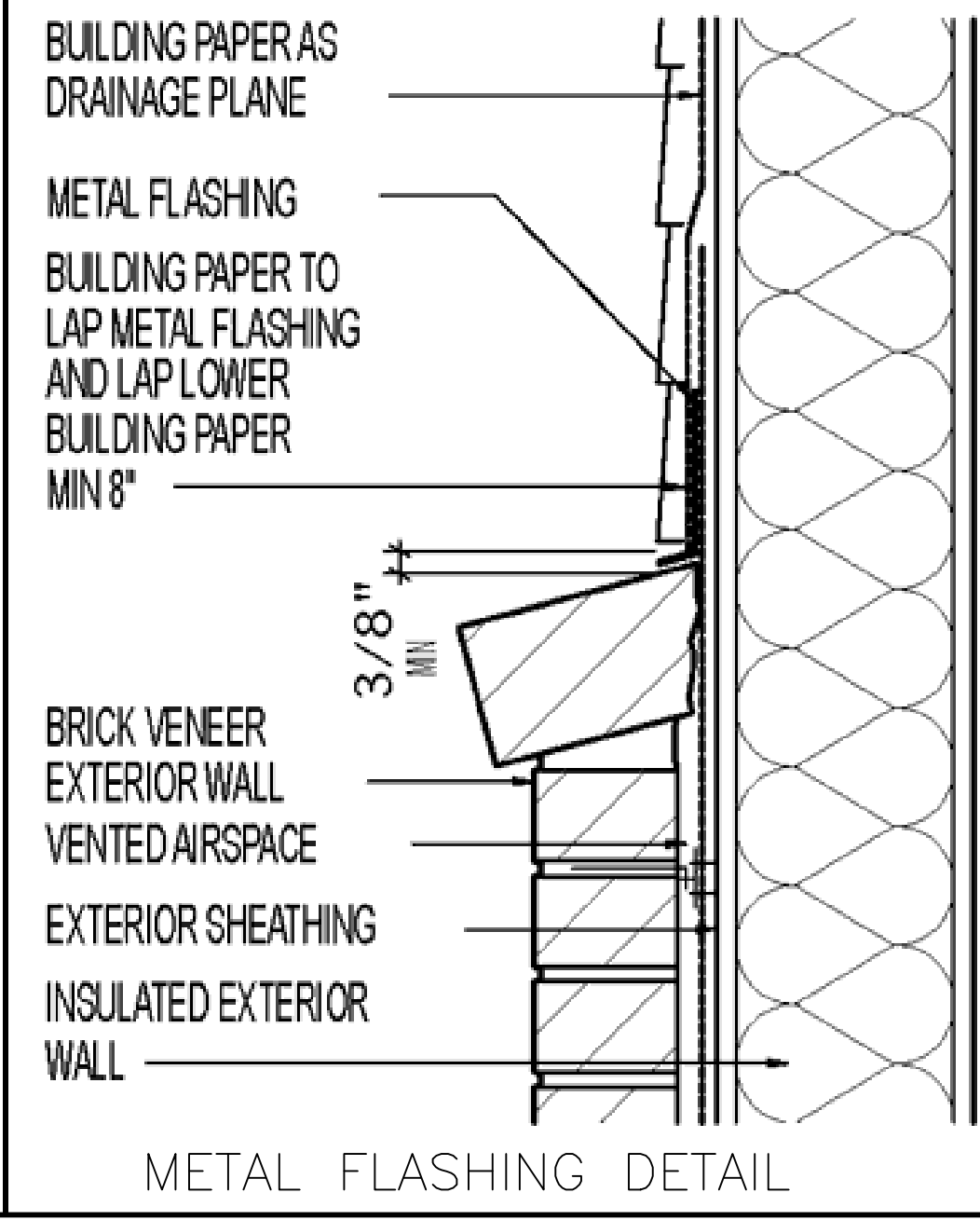
**KAS** Gales Company
Consulting Engineers
18772 Harmon Road
Fayetteville, AR 72704
WK: 479.361.9977 Cell 479.422.0763
Email: carl.d.gales@gmail.com

Housing Authority of the Cherokee Nation		1 Bedroom ADA Cabinet Elev/HVAC Clst Plan	
DESIGNED BY:	IM	APPROVED BY:	CDG
DRAWN BY:	IM	DATE PREPARED:	September 2021
NO.	0.	REVISION PER HOUSING AUTHORITY OF THE CHEROKEE NATION	REVISION





NOTE:
32" BRICK WAINSCOTING
ADDED TO ALL UNITS.
METAL FLASHING TO BE
USED AT THE SIDING TO
BRICK ROWLOCK
TRANSITION.



ENGINEER
KAS Gales Company
Consulting Engineers
18772 Harmon Road
Fayetteville, AR 72704
WK: 479.361.9977 Cell 479.422.0763
Email: carl.d.gales@gmail.com

Housing Authority of the
Cherokee Nation

1 Bedroom ADA
Foundation Details

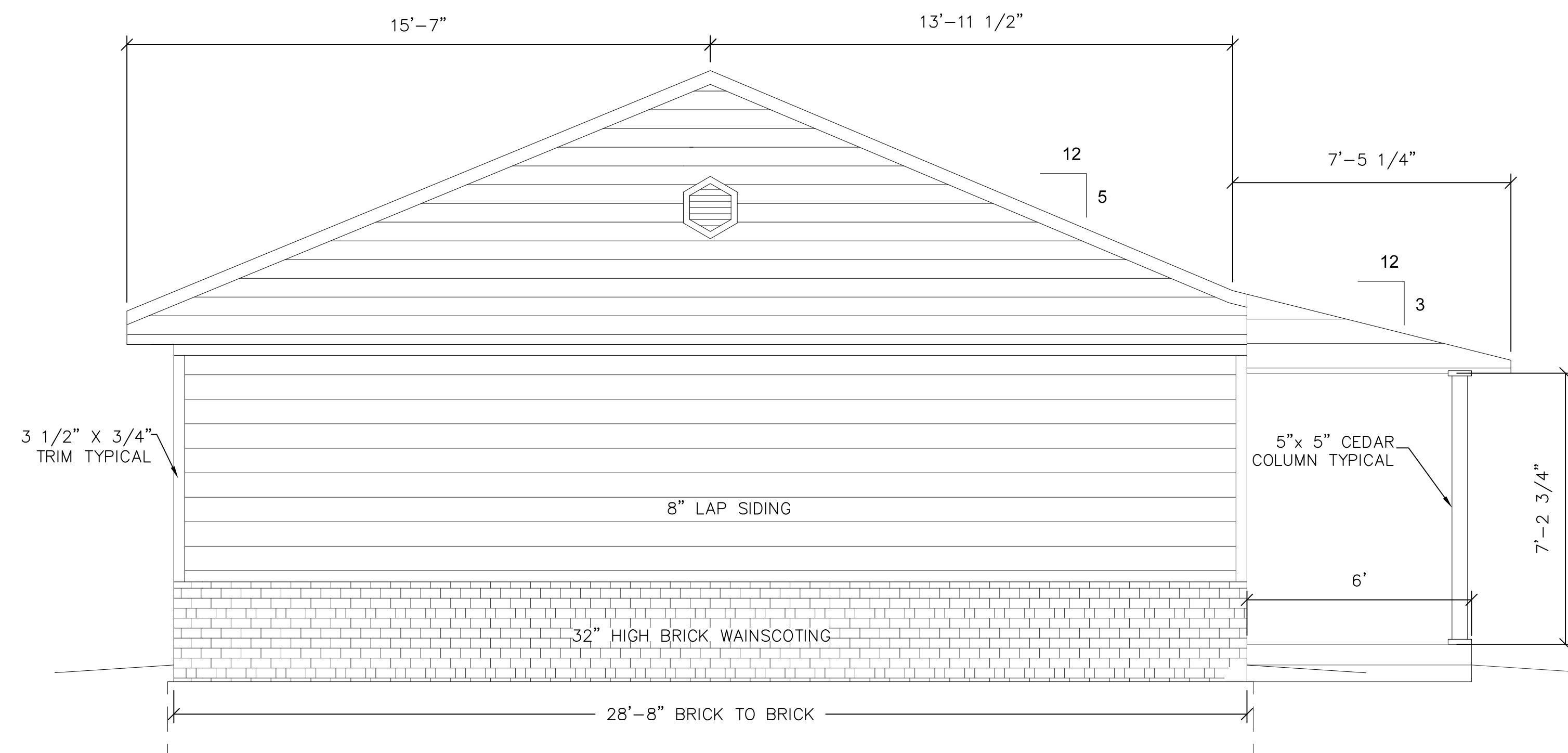
DESIGNED BY: CDB
APPROVED BY: CDB
DRAWN BY: JM
DATE PREPARED: September 2021

NO.	REVISION	DATE	BY
0.	REVISION PER HOUSING AUTHORITY OF THE CHEROKEE NATION	11/10/22	MDD

A105
SHEET NO.



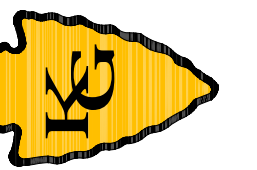
FRONT ELEVATION



SIDE ELEVATION

ELEVATION
SCALE 3/8"=1'

ENGINEER
KAS Gales Company
Consulting Engineers
18772 Harmon Road
Fayetteville, AR 72704
WK. 479.361.9977 Cell 479.422.0763
Email: carl.d.gales@gmail.com



Housing Authority of the
Cherokee Nation

1 Bedroom ADA
Gable Elevation

DESIGNED BY:
MDD
DATE PREPARED:
September 2021

DRAWN BY:
SM

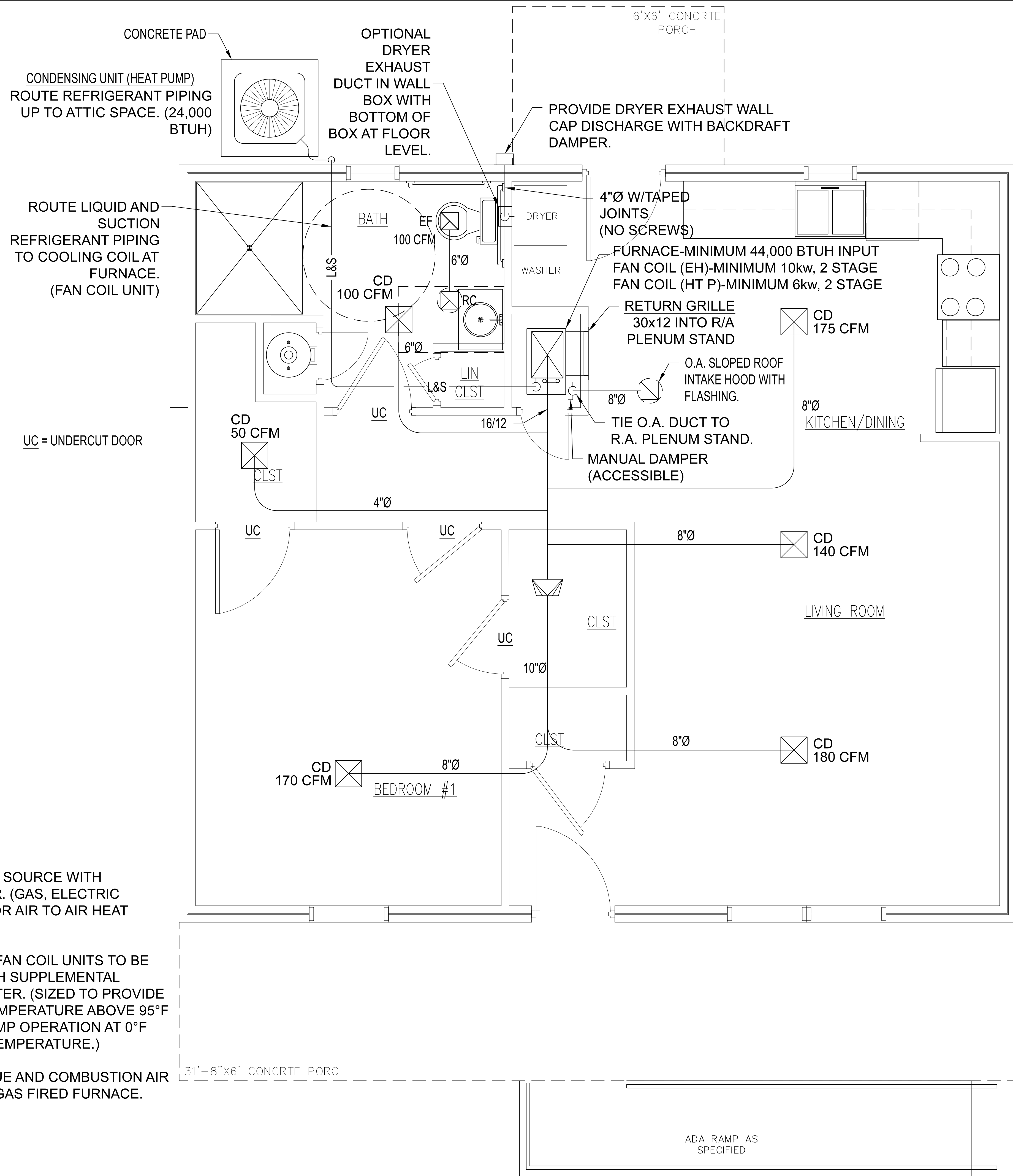
BY

DATE

REVISION PER HOUSING AUTHORITY OF THE CHEROKEE NATION
REVISION

NO.

A106
SHEET NO.



- NOTE:
1. VERIFY HEAT SOURCE WITH CONSTRUCTOR. (GAS, ELECTRIC RESISTANCE, OR AIR TO AIR HEAT PUMP)
 2. HEAT PUMP FAN COIL UNITS TO BE PROVIDED WITH SUPPLEMENTAL ELECTRIC HEATER. (SIZED TO PROVIDE SUPPLY AIR TEMPERATURE ABOVE 95°F WITH HEAT PUMP OPERATION AT 0°F OUTSIDE AIR TEMPERATURE.)
 3. PROVIDE FLUE AND COMBUSTION AIR DUCTING FOR GAS FIRED FURNACE.

AIR DEVICES - HART & COOLEY OR EQUAL
CEILING DIFFUSERS TYPE 500

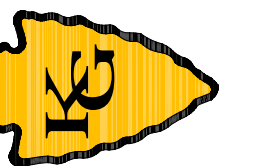
6x6	75 CFM OR LESS
8x8	75-120 CFM
10x10	120-175 CFM
12x12	175-300 CFM

SIDEWALL FURNACE (FAN COIL) RETURN GRILLE
TYPE 672

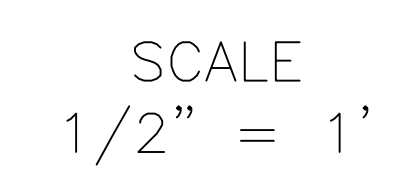
30x12	800 CFM	(2T)
30x18	1200 CFM	(3T)
30x24	1600 CFM	(4T)

SCALE
1/2" = 1'

ENGINEER
KAS Gales Company
Consulting Engineers
18772 Harmon Road
Fayetteville, AR 72704
WK: 479.361.9977 Cell 479.422.0763
Email: carl.d.gales@gmail.com

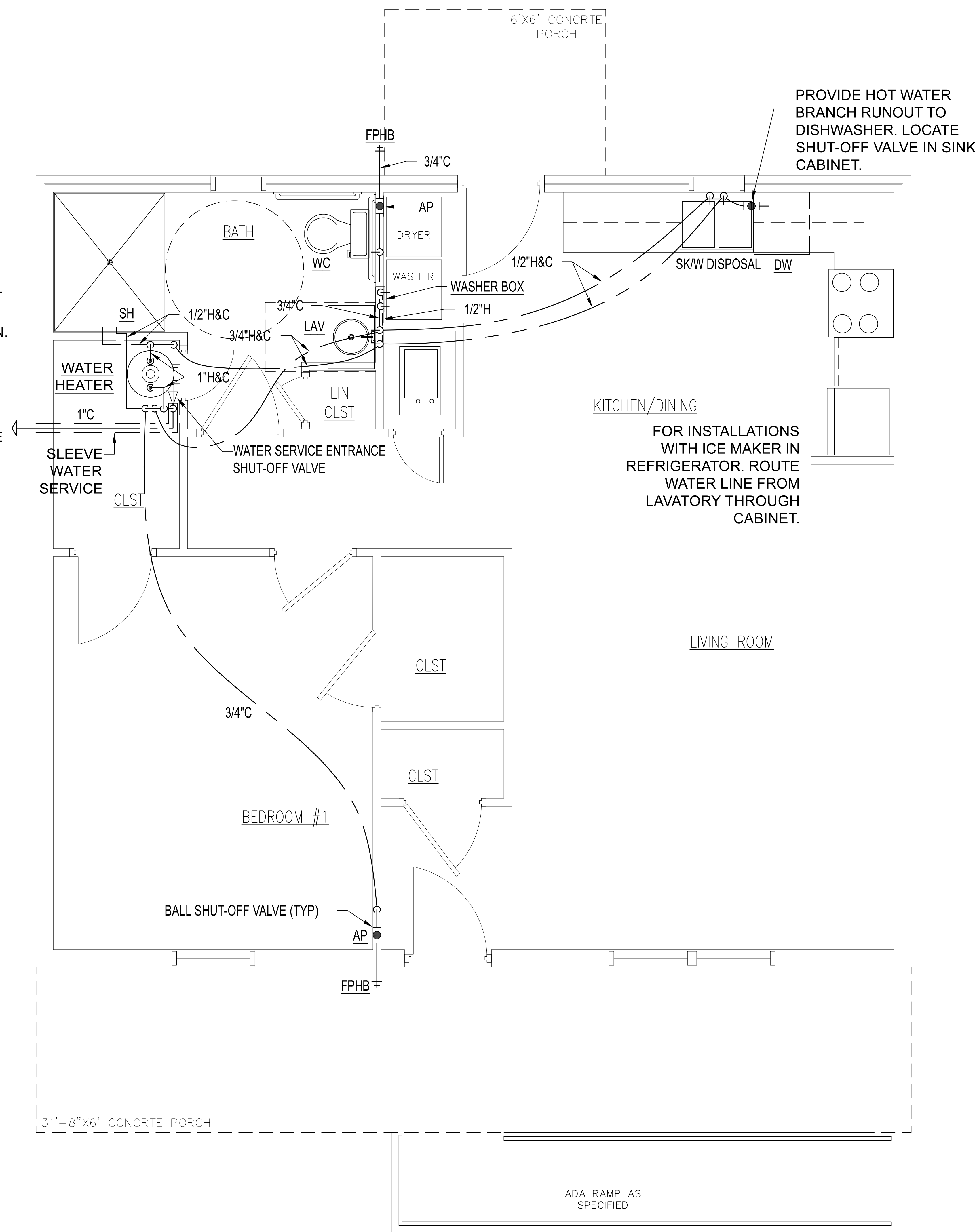


Housing Authority of the Cherokee Nation				DESIGNED BY:		APPROVED BY:	
Cherokee Nation				1 Bedroom ADA HVAC Plan		CDG	
				MDD		BY	
				11/10/22		DATE	
				REVISION PER HOUSING AUTHORITY OF THE CHEROKEE NATION		REVISION	
				0		NO.	
						M101	
						SHEET NO.	



WATER HEATER
MINIMUM 40 GAL. STORAGE
CAPACITY GAS FIRED OR
ELECTRIC (VERIFY HEAT
SOURCE AVAILABLE WITH
CONSTRUCTOR)
PROVIDE SHUT-OFF VALVE,
HEAT TRAP, DRAIN VALVE, P&T
VALVE, AND DRAIN PAN FOR
WATER HEATER INSTALLATION.

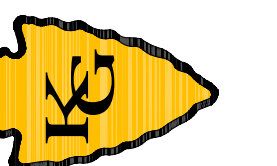
EXTEND WATER
SERVICE TO SITE
UTILITY OR PRIVATE
WELL SYSTEM



SCALE
1/2" = 1'

ENGINEER

KAS Gales Company
Consulting Engineers
18772 Harmon Road
Fayetteville, AR 72704
Wk. 479.361.9977 Cell 479.422.0763
Email: carl.d.gales@gmail.com



Housing Authority of the
Cherokee Nation

1 Bedroom ADA
Domestic Water Plan

DESIGNED BY:
MDD

APPROVED BY:
CDG

DRAWN BY:
SM

DATE
11/10/22

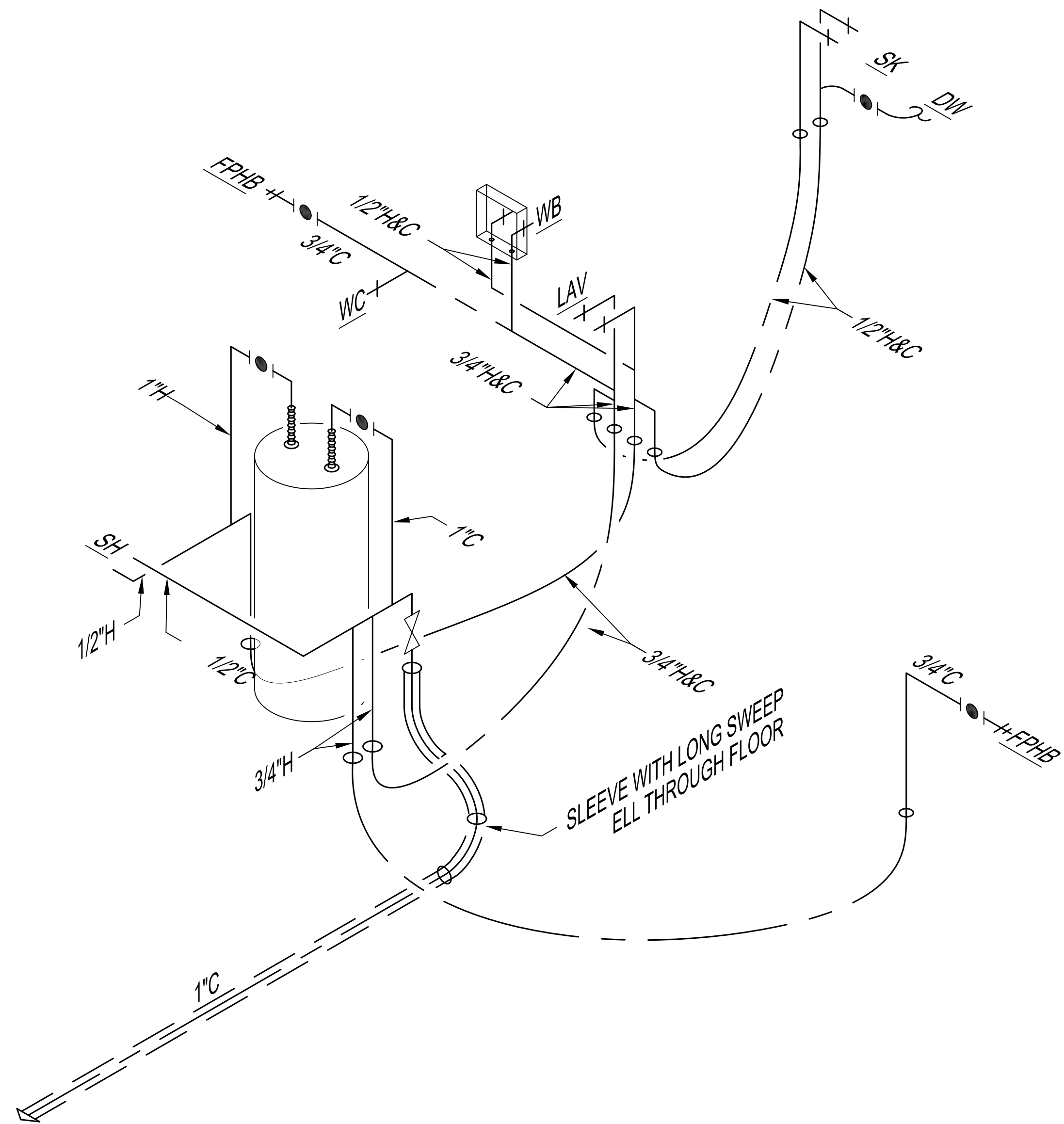
BY
MDD

REVISION PER HOUSING AUTHORITY OF THE CHEROKEE NATION

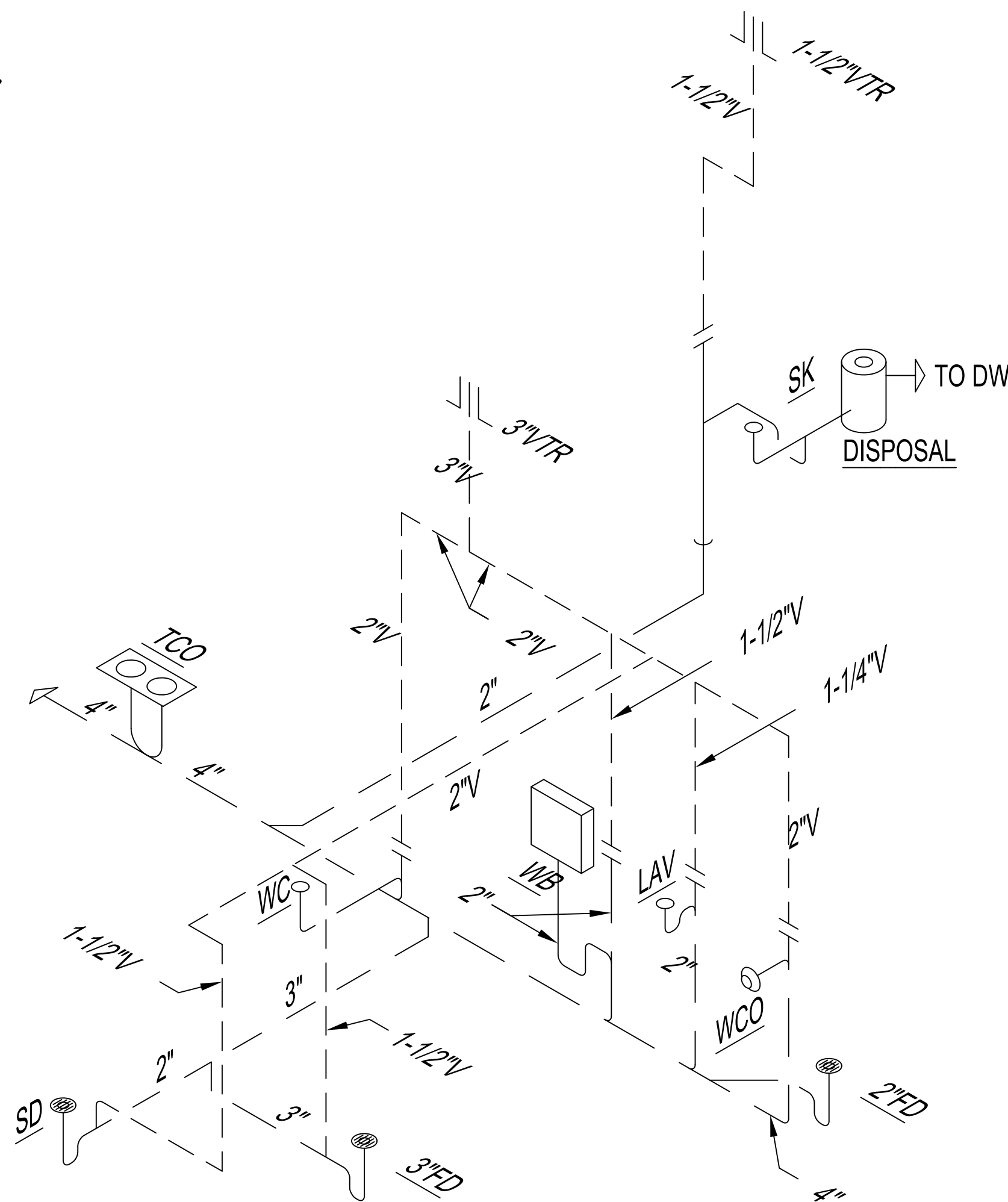
REVISION

NO.
0.

P102
SHEET NO.



DOMESTIC WATER
ISOMETRIC
PLUMBING PLAN



WASTE AND VENT
ISOMETRIC
PLUMBING PLAN

SCALE
1/2" = 1'

ENGINEER
KAS Gales Company
Consulting Engineers
18772 Harmon Road
Fayetteville, AR 72704
WK: 479.361.9977 Cell 479.422.0763
Email: carl.d.gales@gmail.com



Housing Authority of the
Cherokee Nation

1 Bedroom ADA
Isometric Plumbing Plans

DESIGNED BY:
CIG

DRAWN BY:
SM

DATE
11/10/22

BY
MDD

REVISION PER HOUSING AUTHORITY OF THE CHEROKEE NATION

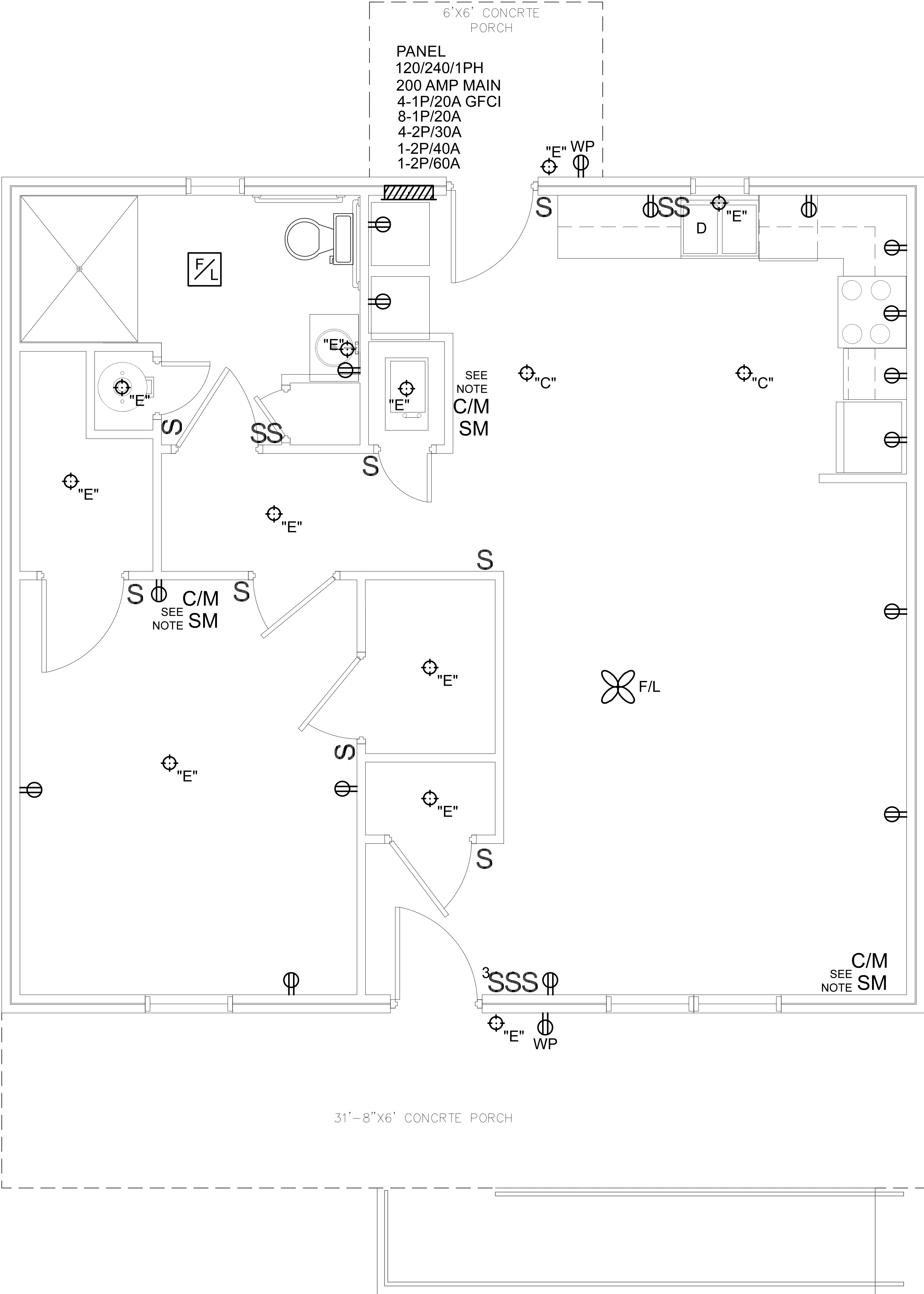
REVISION

NO.

0.

P103
SHEET NO.

NOTE:
SMOKE DETECTORS TO
BE INSTALLED ON THE
WALL 12 INCHES FROM
CEILING PER NFPA



SCALE
1/2" = 1'

ENGINEER
KAS Gales Company
Consulting Engineers
18772 Harmon Road
Fayetteville, AR 72704
Wk. 479.361.9977 Cell 479.422.0763
Email: carl.d.gales@gmail.com



Housing Authority of the
Cherokee Nation

1 Bedroom ADA
Electrical Plan

DESIGNED BY:
MDD
APPROVED BY:
C/DG
DATE PREPARED:
September 2021

DRAWN BY:
SM

DATE
BY

REVISION PER HOUSING AUTHORITY OF THE CHEROKEE NATION
REVISION
NO.

E101
SHEET NO.