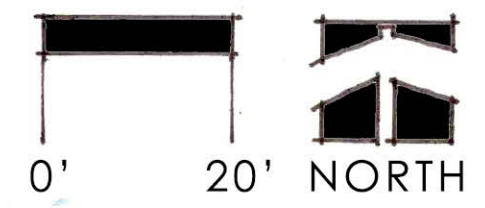


- NOTES**
1. AS DETERMINED BY THE CHEROKEE NATION, THE PLAN WILL ACCOMMODATE EXISTING HISTORICAL MARKERS THAT ARE DESIRED TO REMAIN WITHIN THE CAPITOL GROUNDS.
 2. EXTERIOR/ DIRECTIONAL SIGNAGE IS PROPOSED FOR THE MUSEUM GROUNDS (NOT SHOWN).
 3. FOR THE PROPOSED TRAIL OF TEARS PLAZA, ART / CULTURAL ELEMENTS WILL BE DESIGNED BY THE CHEROKEE NATION.

- PROPOSED LANDSCAPE PLANTINGS (TYPICAL)
- EXISTING PAVER SIDEWALK
- EXISTING TREE TO REMAIN (TYP.)
- PLANTINGS & STONE PAVING TO REINFORCE PROMINENCE OF FRONT WALKS
- PROPOSED LOCATION FOR RELOCATED HISTORICAL MONUMENTS (REFER TO NOTE #1)
- DECORATIVE PAVING TO ENHANCE FLAGPOLES
- PROPOSED SHADE TREE (TYPICAL)
- "ACORN" STYLE PEDESTRIAN LIGHT (TYPICAL)
- OVERHEAD UTILITY LINE

- DUMPSTER ENCLOSURE
- LANDSCAPE PLANTINGS TO ENHANCE PARKING ENTRY
- ADJUST CURB FOR BUS TURNING RADIUS (TYPICAL)
- WIDEN SIDEWALK FOR ACCESSIBILITY AT RAMP
- PROPOSED DECORATIVE PAVING (STONE TO MATCH CAPITOL BUILDING) AND LANDSCAPE PLANTINGS TO ENHANCE VEHICULAR ARRIVAL POINT
- NEW PLANTINGS & STONE WALKWAY TO REINFORCE PATH TO MAIN BUILDING ENTRY
- PROPOSED TRAIL OF TEARS PLAZA WITH ART / CULTURAL ELEMENTS, REFLECTING POOL, STONE TERRACE AND SEATING LEDGES
- EVERGREEN TREES - TYPICAL
- PROPOSED CONNECTION TO NATIONAL CHEROKEE PEACE PAVILION



REVISED DECEMBER, 2020

PROPOSED MASTER PLAN FOR LANDSCAPE / GROUNDS ENHANCEMENT

CHEROKEE NATIONAL CAPITOL MUSEUM

PREPARED BY: INTEGRATED CONSTRUCTION + DESIGN / ALABACK DESIGN