

DENALI

MANUFACTURED BY:

CXT INC. (TX)
901 N. HIGHWAY 77
HILLSBORO, TX 76645

SITE ADDRESS:

ATTUCKS PARK
E. DELAWARE & 3RD STREET,
VINITA, OK 74301

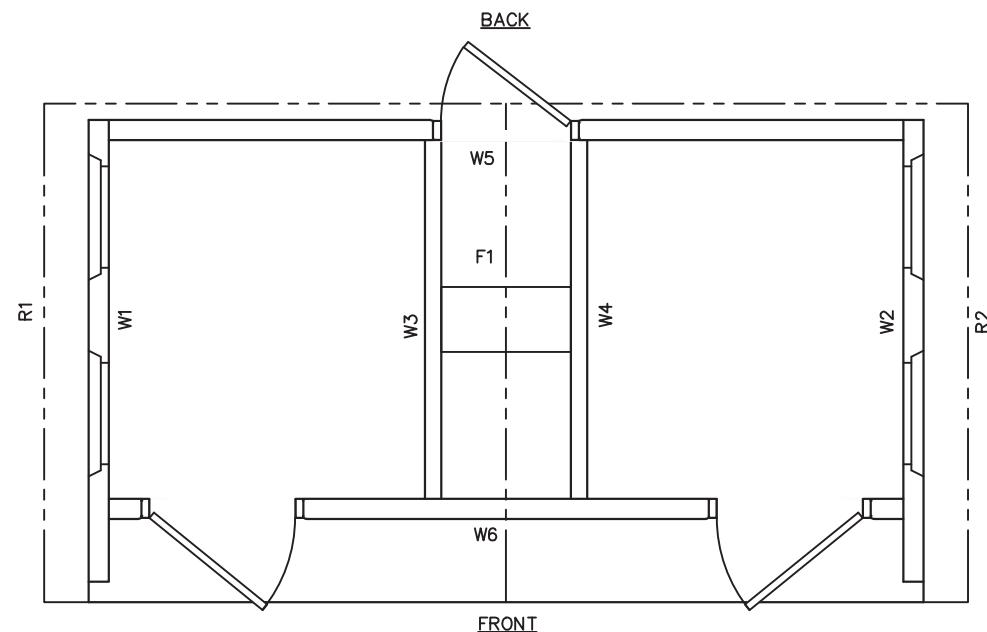
SITE ADDRESS:

NORTH PARK
N. SMITH ST. & W. TAHLEQUAH AVE.,
VINITA, OK 74301

NOTES

- BUILDING IS DESIGNED TO COMPLY WITH THE 2018 INTERNATIONAL BUILDING CODE.
- DESIGN COMPLIES WITH THE PROVISIONS OF THE 2018 IBC FOR THE FOLLOWING LOADS:
GROUND SNOW LOAD = 250 PSF
ROOF SNOW LOAD = 201 PSF
FLOOR LOAD = 400 PSF
IBC DESIGN SPECTRAL RESPONSE $S_s = 0.498$, $S_1 = 0.141$
SITE CLASS D
RISK CATEGORY: II
SEISMIC DESIGN CATEGORY: D
BEARING WALL SYSTEM $R = 4.0$
A-5 INTERMEDIATE PRECAST SHEARWALLS
WIND - $V = 150$ MPH
WIND - $V_{ASD} = 116$ MPH
WIND EXPOSURE C
***BUILDING IS NOT TO BE PLACED IN A LOCATION WHERE LOADS EXCEED THE VALUES PROVIDED ABOVE
- CONSTRUCTION TYPE: V-B
OCCUPANCY: U
EXTERIOR WALLS: 1-HR RATED PER IBC TABLE 721.1(2), ITEM 4-1.1
MINIMUM FIRE SEPARATION DISTANCE: 10' PER IBC TABLE 705.8
MAXIMUM UNPROTECTED OPENING AREA: 10.12% (WALL W1 & W2)
- CONCRETE STRENGTH $f'_{ci} = 2500$ PSI INITIAL $f'_{c} = 5000$ PSI
FINAL AIR ENTRAINMENT $6\% \pm 1 \frac{1}{2}\%$ IN PLASTIC CONCRETE.
REINFORCING STEEL: ASTM A615 #3 GRADE 40, #4 AND LARGER GRADE 60 $F_y=60$ KSI MINIMUM LAP 18" AT SPLICES. TIE BARS WITH DOUBLE ANNEALED 16 GA IRON WIRE. REINFORCING TO BE PLACED IN CENTER OF PANEL UNO.
REINFORCING STEEL SHALL BE ACCURATELY PLACED WELDED WIRE FABRIC (W.W.F.): ASTM A1064, 4x4xW6.7xW6.7, $F_y=80$ KSI (OR EQUIVALENT), SMOOTH WIRE, MIN. LAP 2 SQUARES.
- EMBEDDED ITEMS IDENTIFIED ON DRAWINGS (i.e. PS-2, R301) REFER TO CXT STANDARD EMBEDMENT CATALOG.
- BACK OF PANELS TO HAVE SMOOTH TROWEL FINISH UNO. ALL SURFACES TO BE TEXTURED ARE NOTED ON PANEL DWG'S
- REFER TO SEPARATE CXT INCORPORATED SPECIFICATIONS COVERING DESIGN, MATERIALS, PRODUCTION, AND INSTALLATION CRITERIA FOR SPECIFIC STYLE OF BUILDING.
- ADEQUATE PLUMBING FACILITIES MUST BE PROVIDED IN ACCORDANCE WITH 2015 IBC 2902.3.2 (NOT BY CXT).
- ALL REBAR BENDS TO HAVE A MINIMUM RADIUS OF 6X THE BAR DIAMETER.
- INSTALLATION TO MEET APPLICABLE LOCAL, STATE, & FEDERAL CODES, BY OTHERS.
- BUILDING DOES NOT CONTAIN CONDITIONED SPACE. NO ENVELOPE REQUIREMENTS.

PANEL MARK NO. KEY PLAN



APPLICABLE CODES

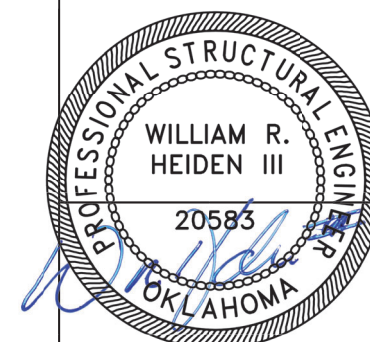
2018 INTERNATIONAL BUILDING CODE
2018 UNIFORM PLUMBING CODE
2018 INTERNATIONAL MECHANICAL CODE
2017 NATIONAL ELECTRIC CODE
2018 INTERNATIONAL ENERGY CONSERVATION CODE (2016 ASHRAE 90.1)

SPECIAL CONDITIONS AND/OR LIMITATIONS

ACCESSIBILITY TO THIS BUILDING, INCLUDING PARKING IS TO BE PROVIDED BY OTHERS AND CONSTRUCTED IN ACCORDANCE WITH ALL LOCAL BUILDING CODES

INDEX OF DRAWINGS

NO.	TITLE
DN-01	COVER SHEET
DN-02	RIGGING DETAIL
DN-03	FLOOR PLAN
DN-04	BUILDING ELEVATIONS
DN-05	INTERIOR ELEVATIONS
DN-06	FINISH DETAILS
DN-07	CASTING DETAILS
DN-08	WALL PANEL MARK W1
DN-09	WALL PANEL MARK W2
DN-10	WALL PANEL MARK W3
DN-11	WALL PANEL MARK W4
DN-12	WALL PANEL MARK W5
DN-13	WALL PANEL MARK W6
DN-14	ROOF SLAB MARK R1
DN-15	ROOF SLAB MARK R2
DN-16	FLOOR SLAB MARK F1
DN-17	FOUNDATION DETAIL
DN-18	UNDERGROUND PIPING LAYOUT
DN-19	PLUMBING PLANS & NOTES
DN-20	PLUMBING DETAILS, DIAGRAMS & SCHEDULE
DN-21	ELECTRICAL NOTES, LEGEND & SCHEDULE
DN-22	ELECTRICAL PLAN
DN-23	ELECTRICAL PANEL ASSEMBLY DETAILS
DN-24	EMBEDDED MATERIALS



September 30, 2022

LB Foster
CXT® Products

6701 E Flamingo Ave Bldg 300 Nampa, ID 83687
901 N. Highway 77 Hillsboro, TX 76645
362 Waverly Road Williamstown, WV 26187

PROJECT TITLE

DENALI

DN-389 & DN-390

NOTICE

The information contained herein is proprietary and the exclusive property of CXT Incorporated. The information may only be used by the original recipient for the purpose intended. Reproduction or distribution of this information is strictly prohibited without the prior written consent of CXT Incorporated. By allowing use of this information, CXT Incorporated grants no warranty, express or implied, including a warranty of merchantability or of fitness for a particular purpose.

CXT Incorporated

REV.	DESCRIPTION	APPROVAL	DATE
SCALE	N/A	DATE	09-12-22
DRAWN	B AXNESS	FILE NO.	DN-389
CHECKED	MCT	PLOT	N/A

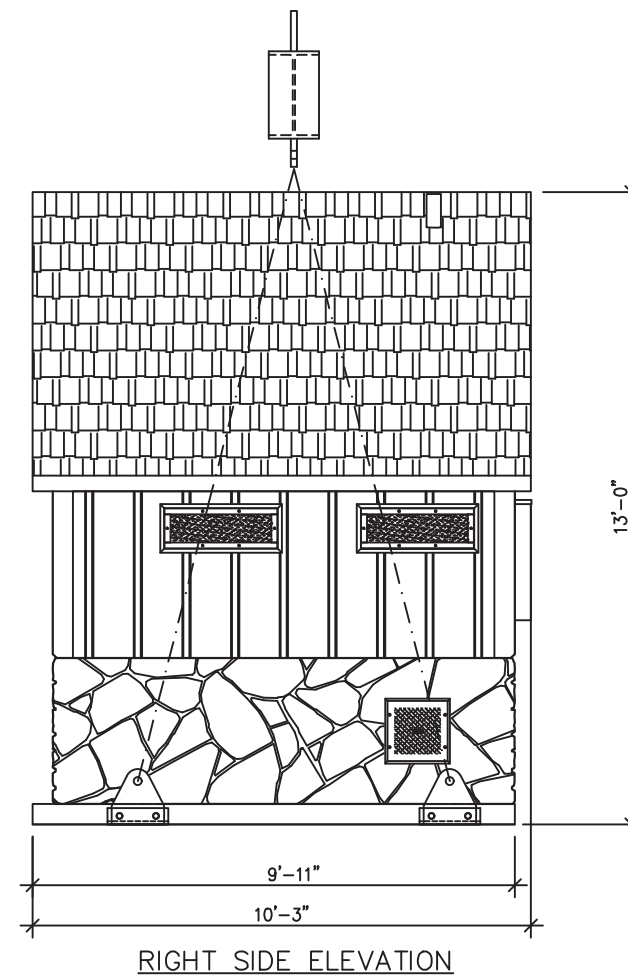
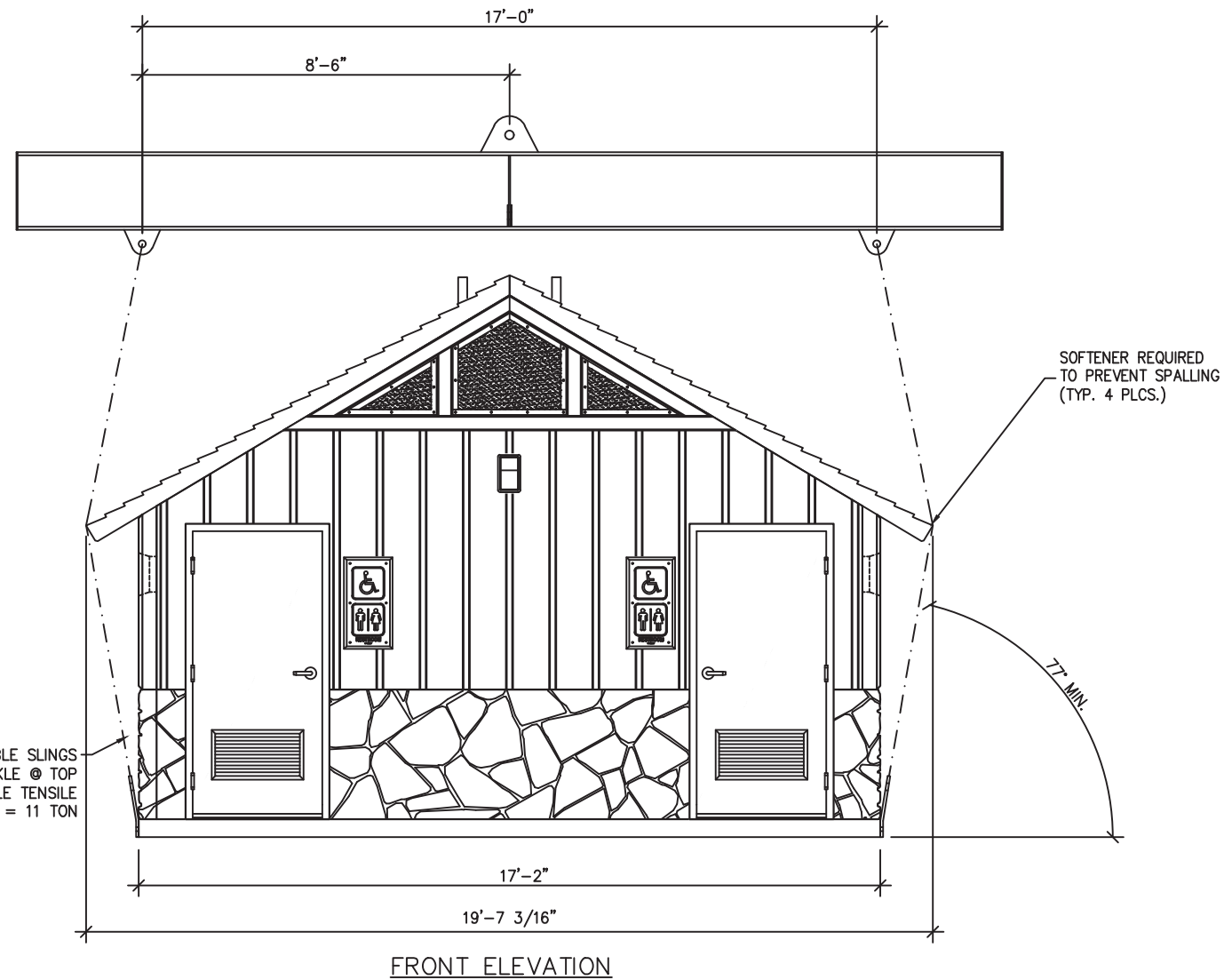
COVER SHEET

DWG NO.	SHEET	REV.
DN-01	1 24	0

CASTING TOLERANCES:	
OVERALL LENGTH OR WIDTH	10 FT OR UNDER = $\pm 1/8"$
	10 TO 20 FT = $\pm 1/8"$, -3/16"
	20 TO 40 FT = $\pm 1/4"$
TOTAL THICKNESS	= -1/8, +1/4
VARIATION FROM SQUARE	= $\pm 1/8$ PER 6 FT OF DIAGONAL
LOCAL SMOOTHNESS	= 1/4" IN 10 FT
SWEEP	= $\pm 1/4"$
POSITION OF TENDONS	= $\pm 1/4"$
POSITION OF BLOCKOUTS	= $\pm 1/4"$
SIZE OF BLOCKOUTS	= $\pm 1/4"$
POSITION OF EMBEDS	= $\pm 1/4"$
TIPPING AND FLUSHNESS OF PLATES	= +1/16, -1/4
BOWING	= LENGTH/360
END SQUARENESS	= $\pm 1/8"$

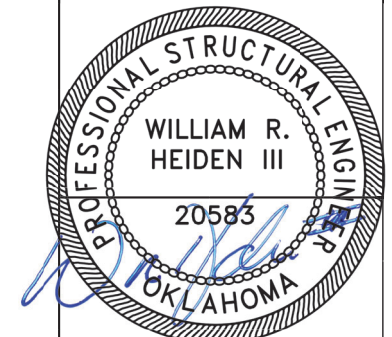
OKLAHOMA PE DRAWINGS (ECC ONLY) REQUIRED

WALL TEXTURE UPPER:	BOARD & BATT
WALL TEXTURE LOWER:	FLAGSTONE
WALL COLOR UPPER:	GRANITE ROCK
WALL COLOR LOWER:	BASALT
ROOF TEXTURE:	CEDAR SHAKE
ROOF COLOR:	JAVA BROWN
TRIM PAINT:	DTM ALKYD ENAMEL BLACK
SEALER:	2K ANTI-GRAFITI
PACKAGE:	STANDARD



NOTES:
1. WEIGHT IS APPROXIMATE.

SHIPPING WEIGHTS AND DIMENSIONS				
SECTION	WEIGHT	LENGTH	WIDTH	HEIGHT
A (BACK)	56,200	19'-8"	10'-3"	13'-0"



September 30, 2022

LB Foster
CXT® Products

6701 E Flamingo Ave Bldg 300 Nampa, ID 83687
901 N. Highway 77 Hillsboro, TX 76645
362 Waverly Road Williamstown, WV 26187

PROJECT TITLE

DENALI
DN-389 & DN-390

NOTICE

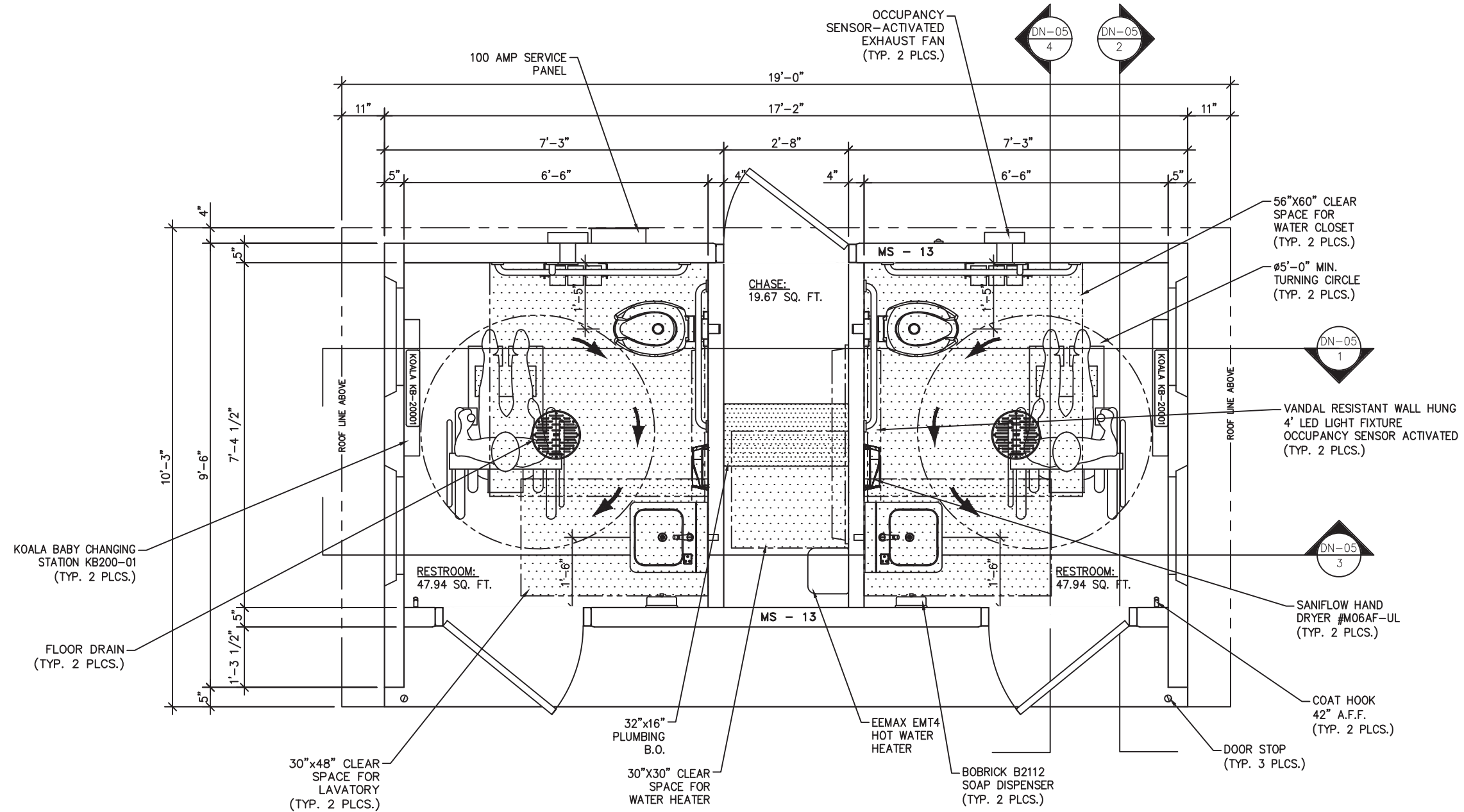
The information contained herein is proprietary and the exclusive property of CXT Incorporated. The information may only be used by the original recipient for the purpose intended. Reproduction or distribution of this information is strictly prohibited without the prior written consent of CXT Incorporated. By allowing use of this information, CXT Incorporated grants no warranty, express or implied, including a warranty of merchantability or of fitness for a particular purpose.

CXT Incorporated

REV.	DESCRIPTION	APPROVAL	DATE
SCALE	N/A	DATE	09-12-22
DRAWN	B AXNESS	FILE NO.	DN-389
CHECKED	MCT	PLOT	N/A

**RIGGING
DETAIL**

DWG NO.	SHEET	REV.
DN-02	2 24	0



September 30, 2022

LB Foster
CXT® Products

6701 E Flamingo Ave Bldg 300 Nampa, ID 83687
901 N. Highway 77 Hillsboro, TX 76645
362 Waverly Road Williamstown, WV 26187

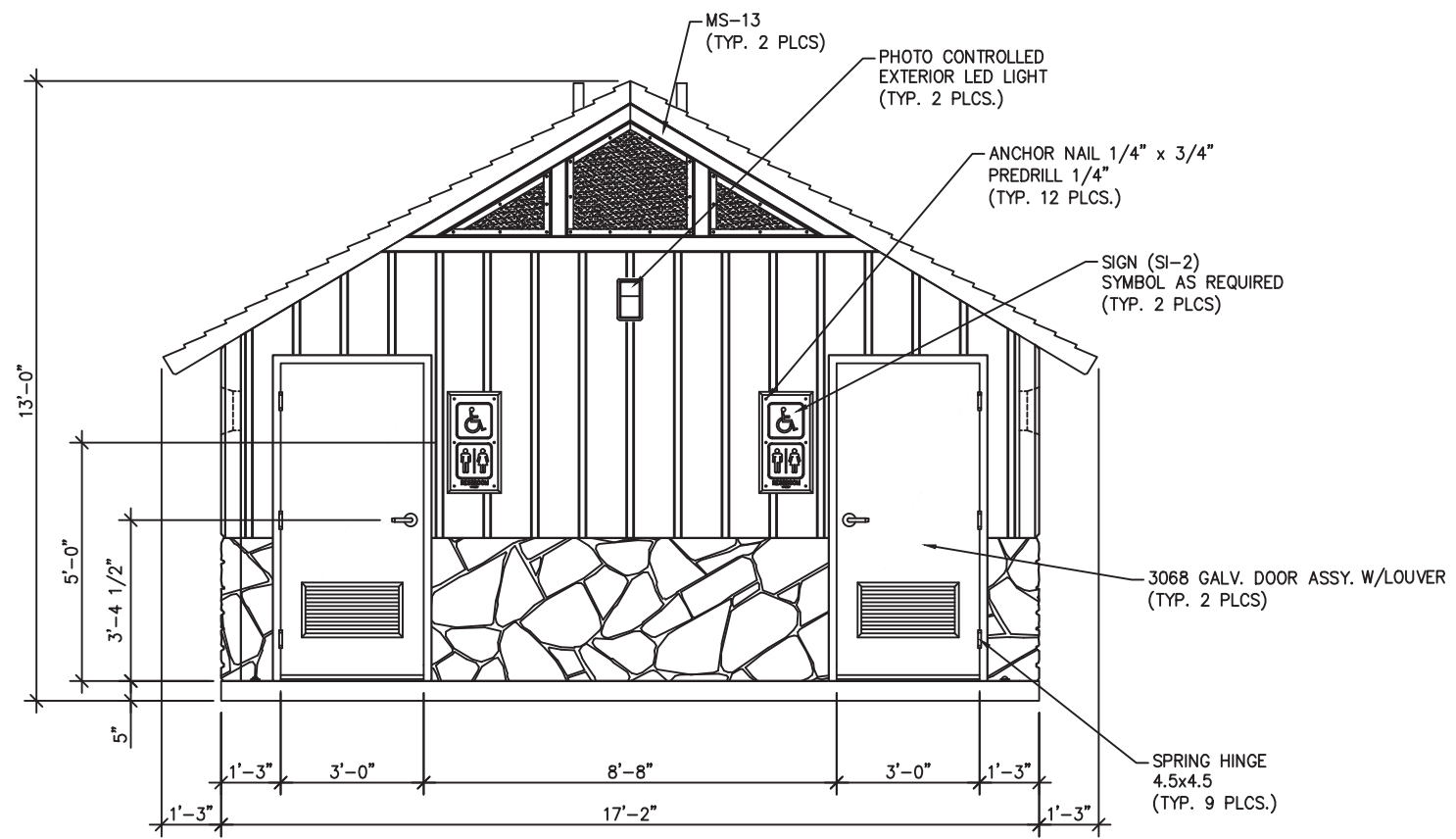
PROJECT TITLE
DENALI
DN-389 & DN-390

NOTICE
The information contained herein is proprietary and the exclusive property of CXT Incorporated. The information may only be used by the original recipient for the purpose intended. Reproduction or distribution of this information is strictly prohibited without the prior written consent of CXT Incorporated. By allowing use of this information, CXT Incorporated grants no warranty, express or implied, including a warranty of merchantability or of fitness for a particular purpose.
CXT Incorporated

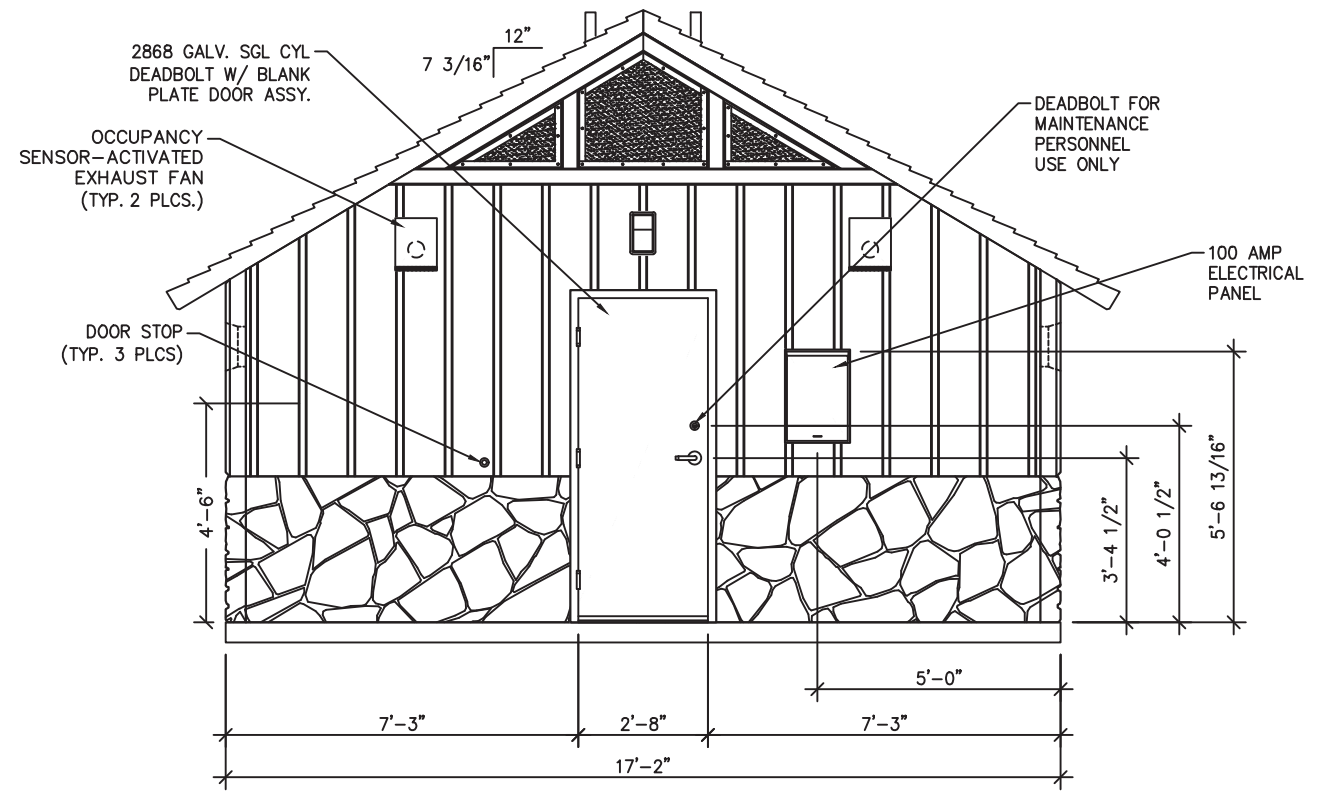
REV.	DESCRIPTION	APPROVAL	DATE
SCALE	3/8"=1'-0"	DATE	09-12-22
DRAWN	B AXNESS	FILE NO.	DN-389
CHECKED	MCT	PLOT	32

FLOOR PLAN

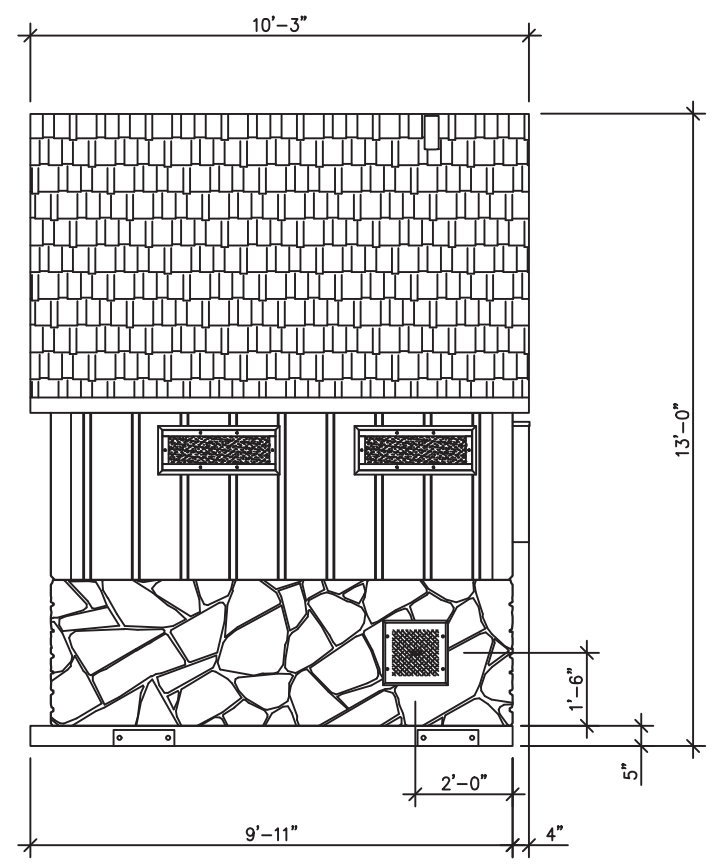
DWG NO.	SHEET	REV.
DN-03	3	0
	24	



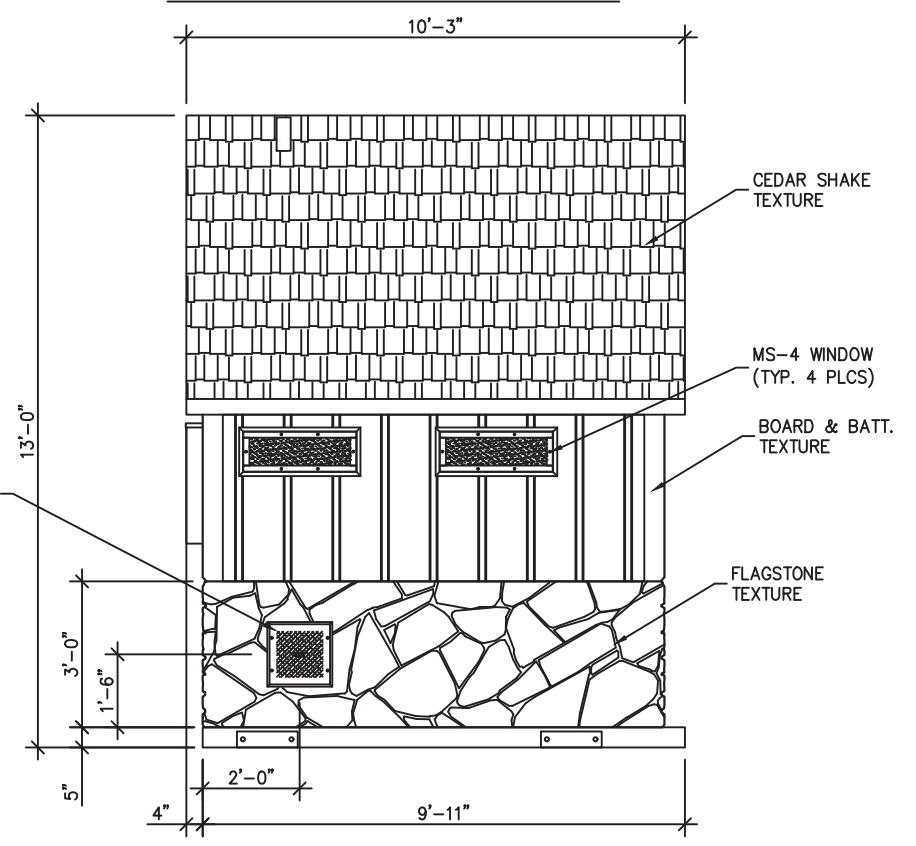
FRONT ELEVATION



REAR ELEVATION



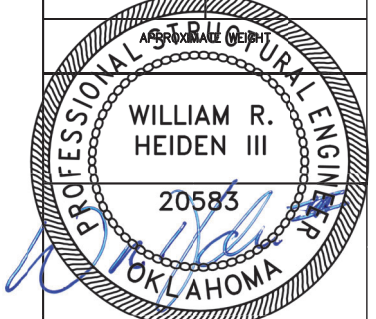
RIGHT SIDE ELEVATION



LEFT SIDE ELEVATION

EMBEDDED MATERIALS	
ITEM	QTY
SPRING HINGE 4.5x4.5	9
3068 GALV DOOR ASSEMBLY	2
2868 GALV DOOR ASSEMBLY	1
ANCHOR NAIL 1/4"x3/4"	12
MS-13	2
SI-2	2
MS-4	4
MS-2	2
DOOR STOP	3
LOUVER	2

CU. FT. CONC.	SQ. FT. W.W.F.



September 30, 2022

LB Foster
CXT® Products

6701 E Flamingo Ave Bldg 300 Nampa, ID 83687
901 N. Highway 77 Hillsboro, TX 76645
362 Waverly Road Williamstown, WV 26187

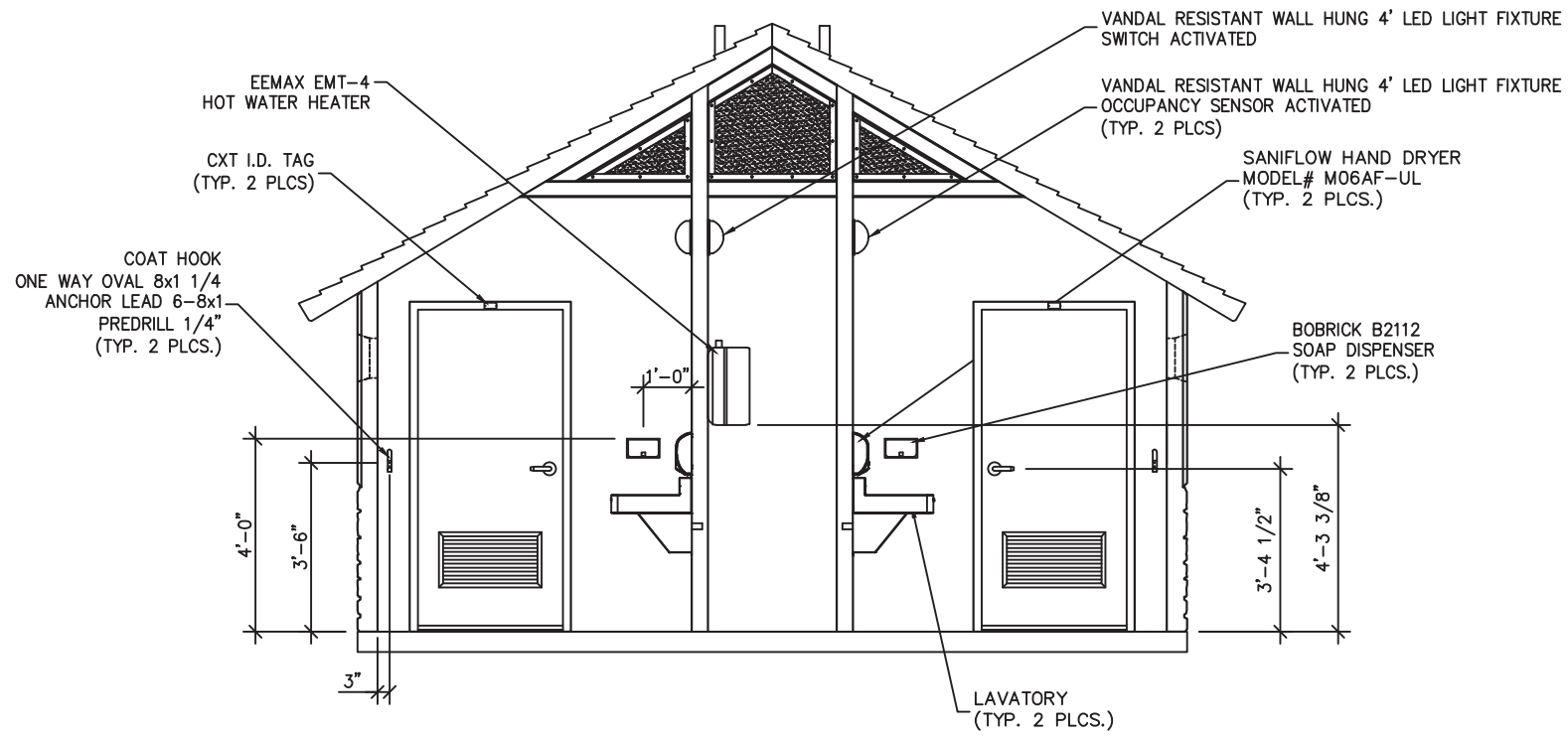
PROJECT TITLE
DENALI
DN-389 & DN-390

NOTICE
The information contained herein is proprietary and the exclusive property of CXT Incorporated. The information may only be used by the original recipient for the purpose intended. Reproduction or distribution of this information is strictly prohibited without the prior written consent of CXT Incorporated. By allowing use of this information, CXT Incorporated grants no warranty, express or implied, including a warranty of merchantability or of fitness for a particular purpose.
CXT Incorporated

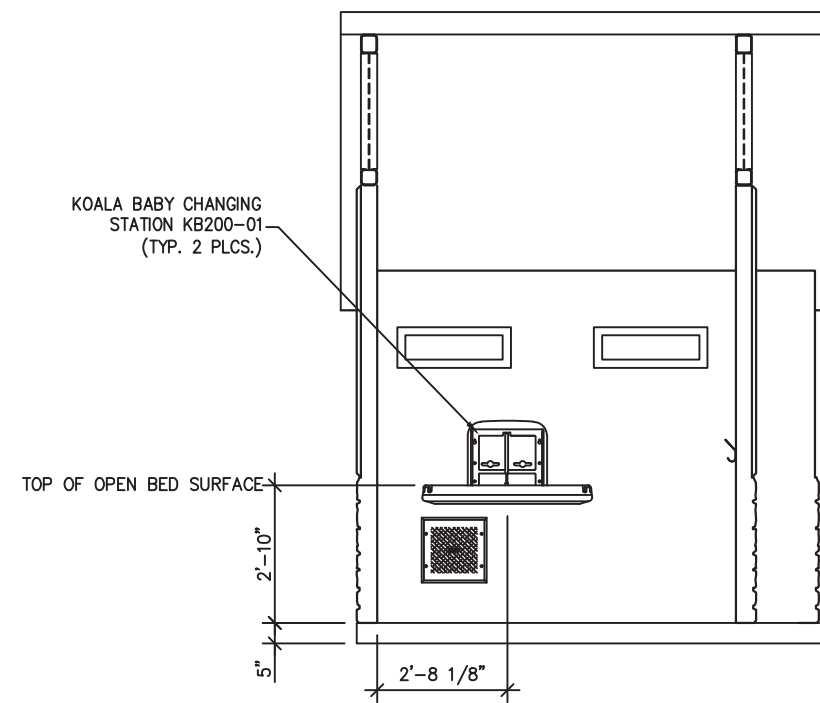
REV.	DESCRIPTION	APPROVAL	DATE
SCALE	1/4"=1'-0"	DATE	09-12-22
DRAWN	B AXNESS	FILE NO.	DN-389
CHECKED	MCT	PLOT	48

BUILDING ELEVATIONS

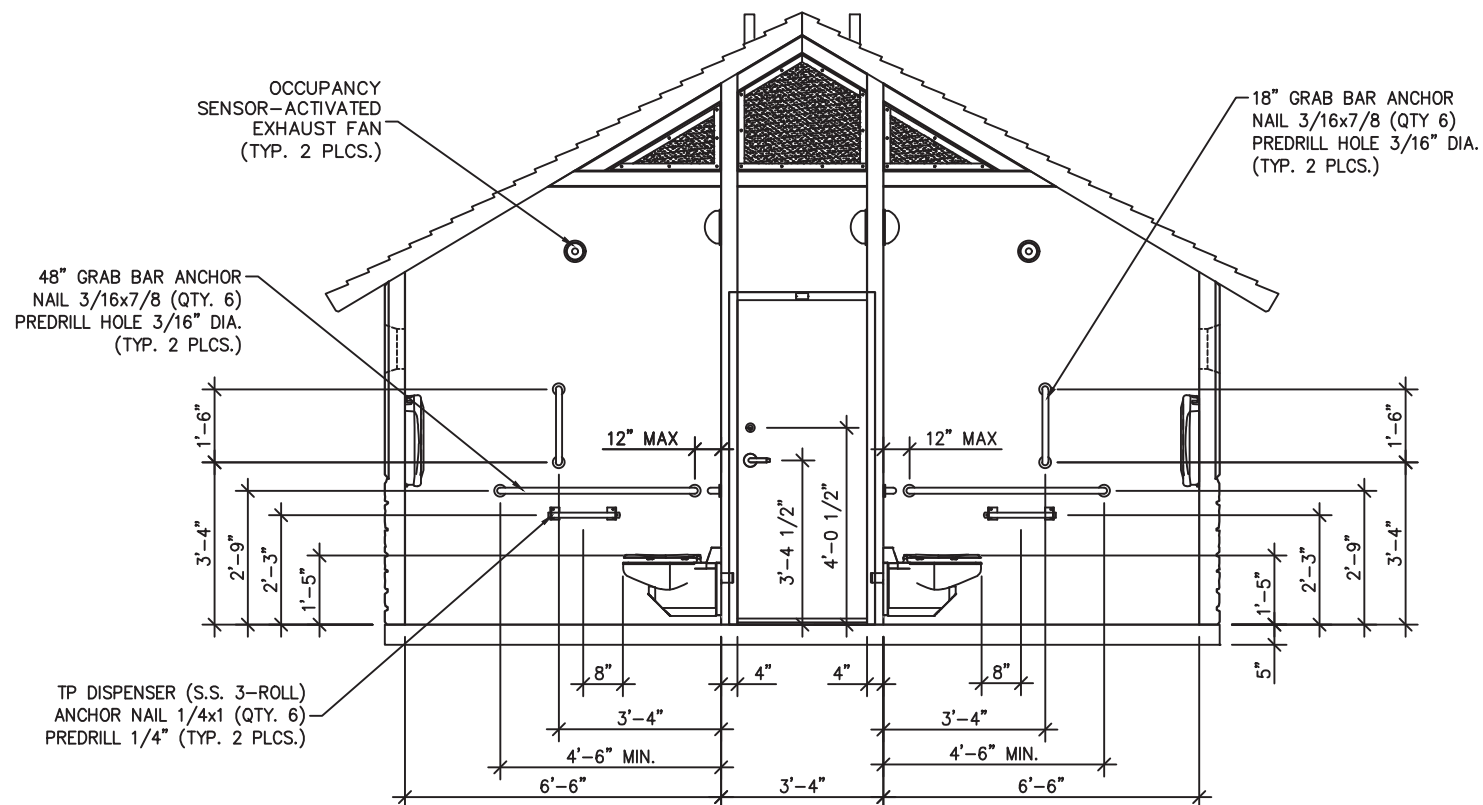
DWG NO.	SHEET	REV.
DN-04	4	0
	24	



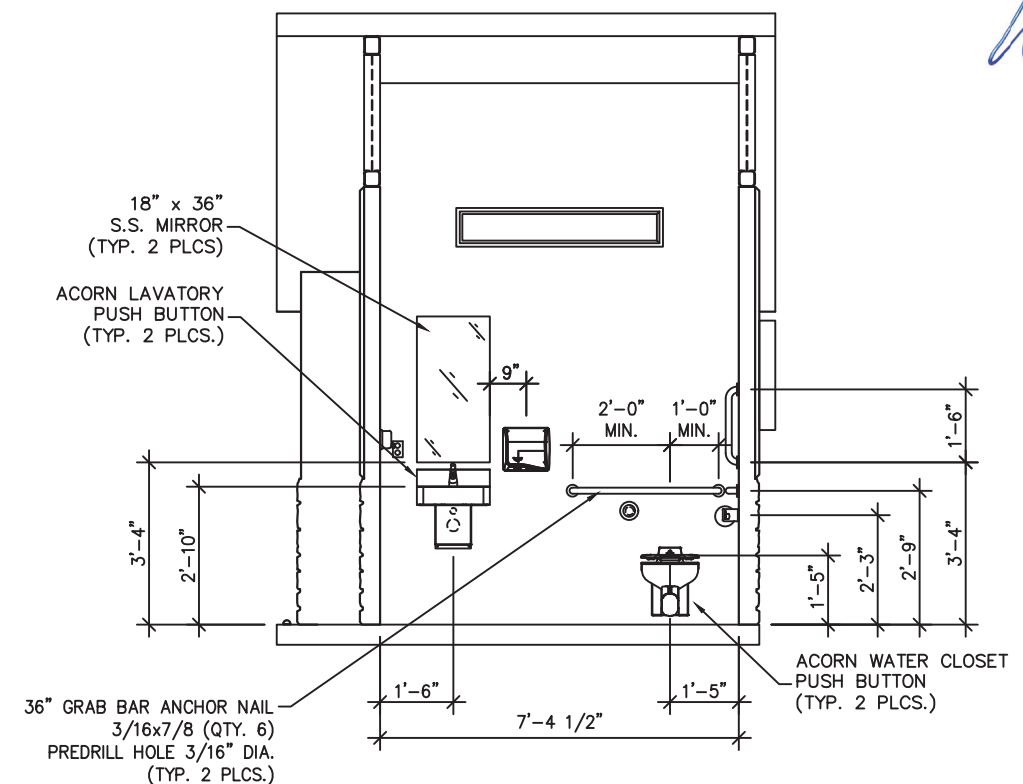
1 INTERIOR ELEVATION - FRONT WALL VIEW



2 INTERIOR ELEVATION - EXTERIOR WALL VIEW

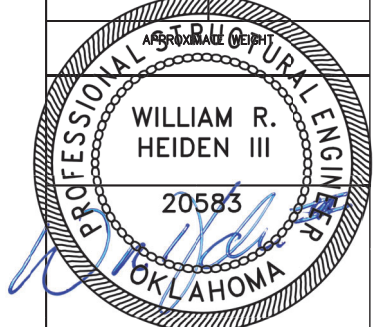


3 INTERIOR ELEVATION - BACK WALL VIEW



4 INTERIOR ELEVATION - INTERIOR WALL VIEW

EMBEDDED MATERIALS	
ITEM	QTY
18" GRAB BAR	2
36" GRAB BAR	2
48" GRAB BAR	2
TOILET PAPER DISPENSER	2
TOILET PAPER ROLL	6
COAT HOOK	2
ONE WAY OVAL 8x1 1/4"	4
ANCHOR LEAD 6-8x1	4
CXT I.D. TAG	2
ANCHOR NAIL 3/16x7/8	36
ANCHOR NAIL 1/4x1	12
BABY CHANGING STATION	2
BOBRICK B2112 SOAP DISPENSER	2
HAND DRYER	2
CU. FT. CONC.	SQ. FT. W.W.F.



September 30, 2022

LBFoster
CXT® Products

6701 E Flamingo Ave Bldg 300 Nampa, ID 83687
901 N. Highway 77 Hillsboro, TX 76645
362 Waverly Road Williamstown, WV 26187

PROJECT TITLE
DENALI
DN-389 & DN-390

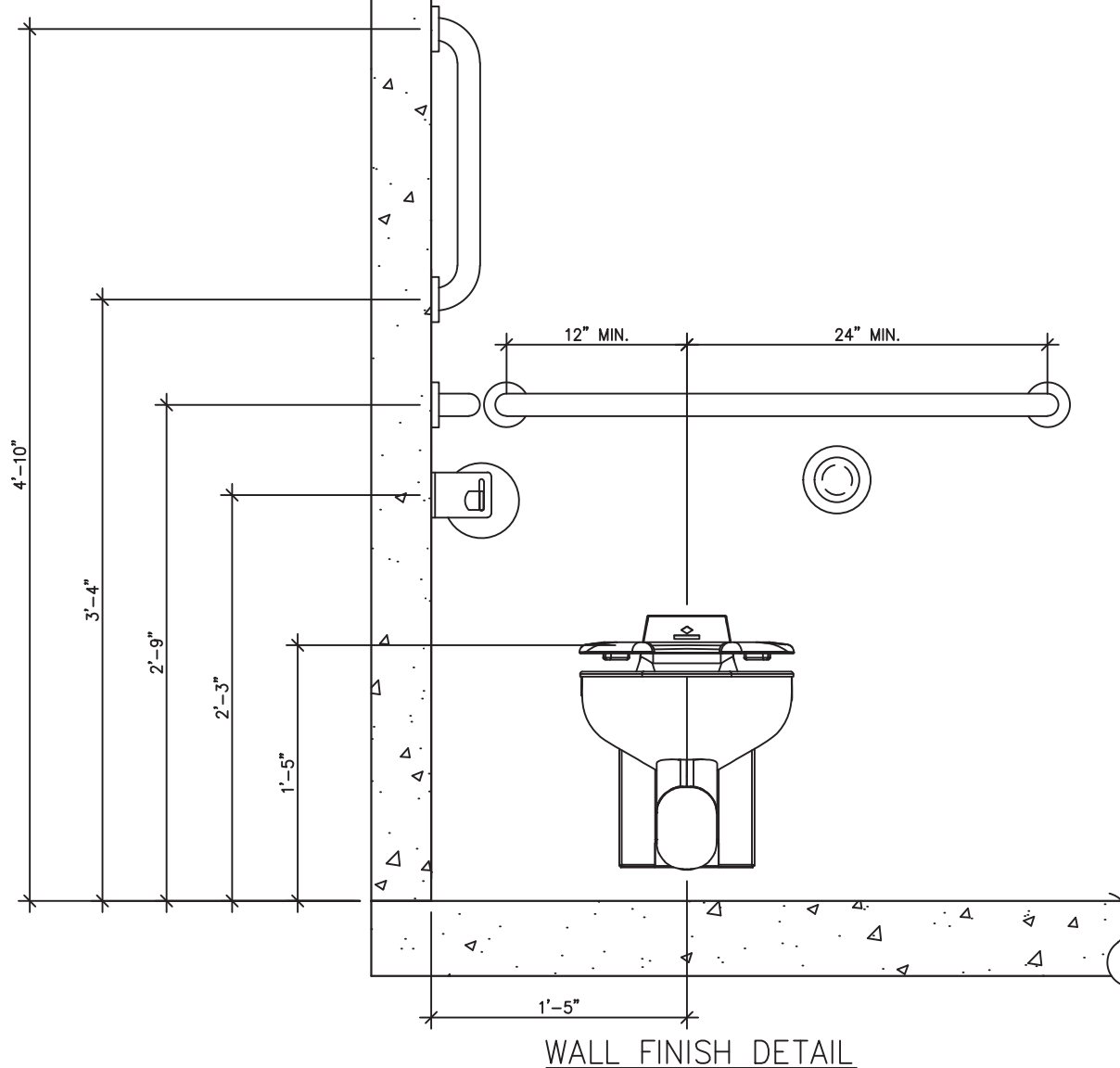
NOTICE
The information contained herein is proprietary and the exclusive property of CXT Incorporated. The information may only be used by the original recipient for the purpose intended. Reproduction or distribution of this information is strictly prohibited without the prior written consent of CXT Incorporated. By allowing use of this information, CXT Incorporated grants no warranty, express or implied, including a warranty of merchantability or of fitness for a particular purpose.
CXT Incorporated

REV.	DESCRIPTION	APPROVAL	DATE
SCALE	1/4"=1'-0"	DATE	09-12-22
DRAWN	B AXNESS	FILE NO.	DN-389
CHECKED	MCT	PLOT	48

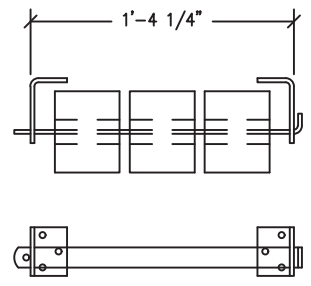
INTERIOR ELEVATIONS		
DWG NO.	SHEET	REV.
DN-05	5	0
	24	

SEAL ALL JOINT OF OUTSIDE PANELS W/ EXTERIOR GRADE SEALANT

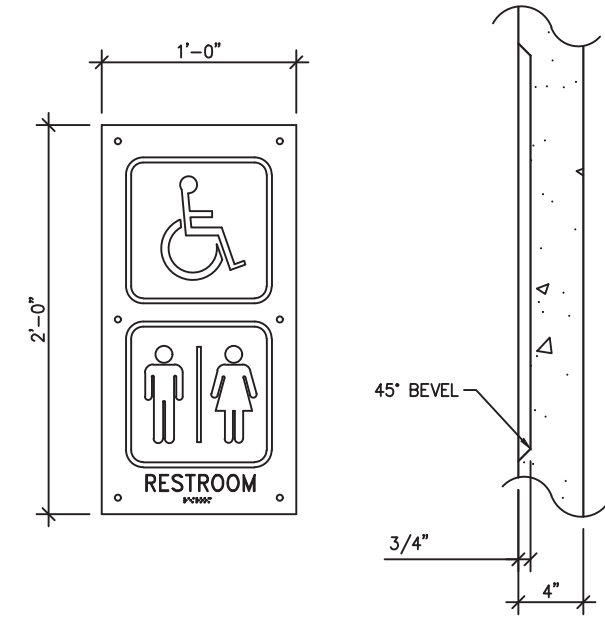
CONCRETE PANEL



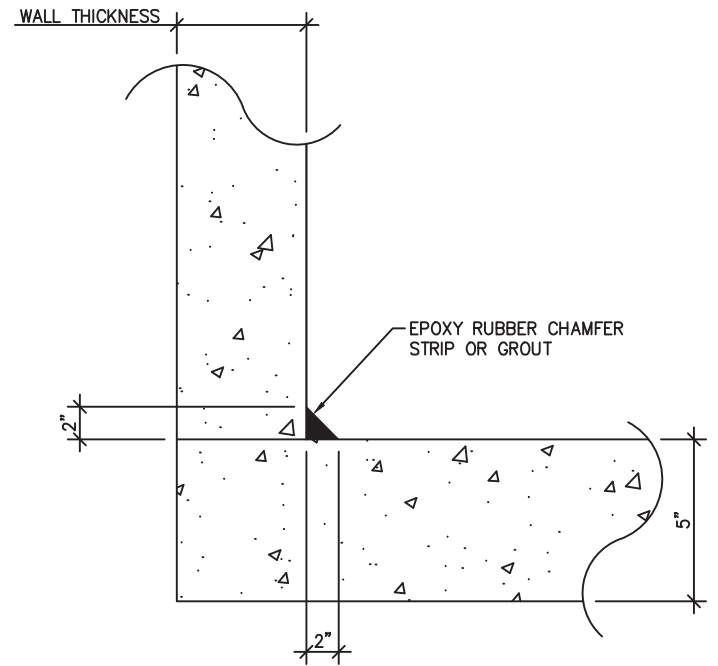
WALL FINISH DETAIL



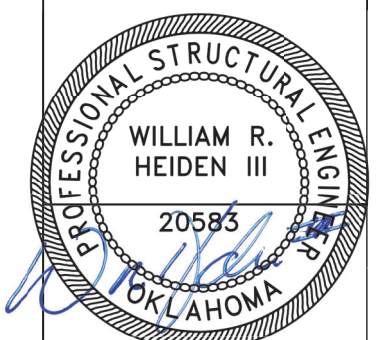
DISPENSER DETAIL



SIGN SI-2 DETAIL



WALL JOINT DETAIL



September 30, 2022

LB Foster
CXT® Products

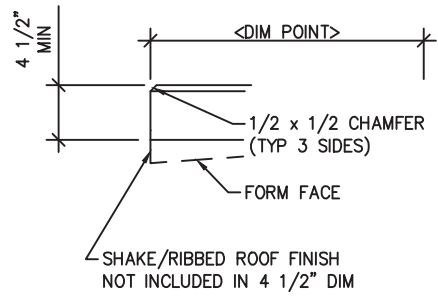
6701 E Flamingo Ave Bldg 300 Nampa, ID 83687
901 N. Highway 77 Hillsboro, TX 76645
362 Waverly Road Williamstown, WV 26187

PROJECT TITLE
DENALI
DN-389 & DN-390

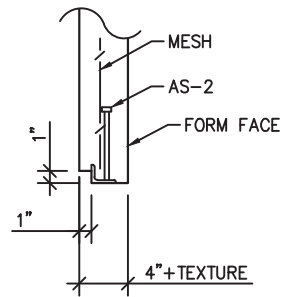
NOTICE
The information contained herein is proprietary and the exclusive property of CXT Incorporated. The information may only be used by the original recipient for the purpose intended. Reproduction or distribution of this information is strictly prohibited without the prior written consent of CXT Incorporated. By allowing use of this information, CXT Incorporated grants no warranty, express or implied, including a warranty of merchantability or of fitness for a particular purpose.
CXT Incorporated

REV.	DESCRIPTION	APPROVAL	DATE
SCALE	1"=1'-0"	DATE	09-12-22
DRAWN	B AXNESS	FILE NO.	DN-389
CHECKED	MCT	PLOT	12

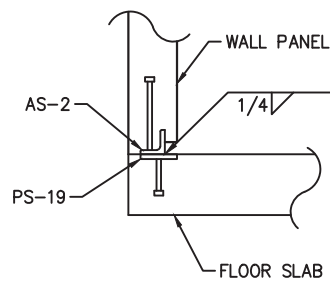
FINISH DETAILS		
DWG NO.	SHEET	REV.
DN-06	6	0
	24	



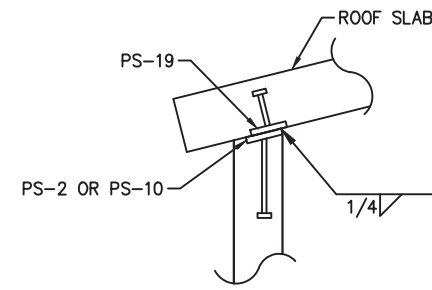
1 TYPICAL ROOF SLAB EDGE
SCALE: 3/4"=1'-0"



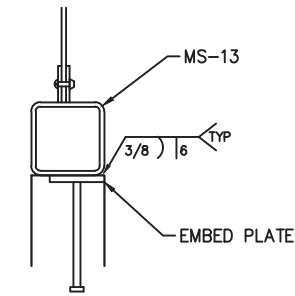
2 AS-2 CAST DETAIL
SCALE: 3/4"=1'-0"



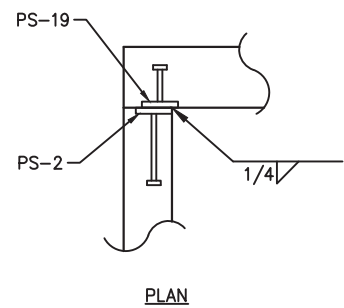
3 TYPICAL WALL TO FLOOR
SLAB WELDED CONNECTION
SCALE: 3/4"=1'-0"



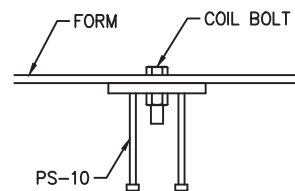
4 TYPICAL WALL TO ROOF
SLAB WELDED CONNECTION
SCALE: 3/4"=1'-0"



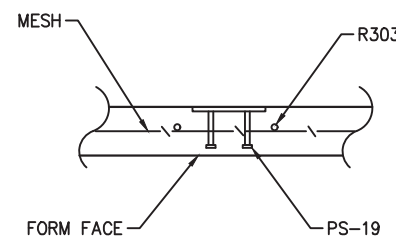
5 MS-13 WELD DETAIL
SCALE: 3/4"=1'-0"



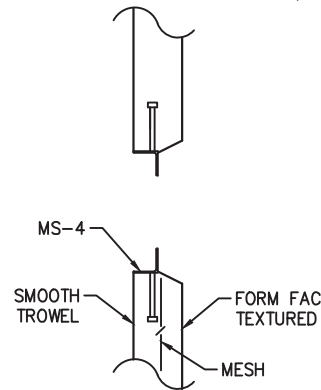
6 TYPICAL WALL TO WALL
PANEL WELDED CONNECTION
SCALE: 3/4"=1'-0"



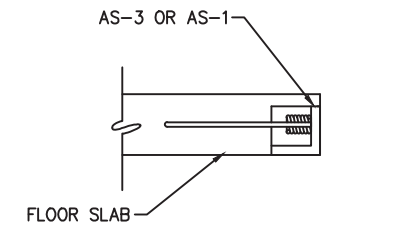
7 PS-10 CASTING DETAIL
SCALE: 1"=1'-0"



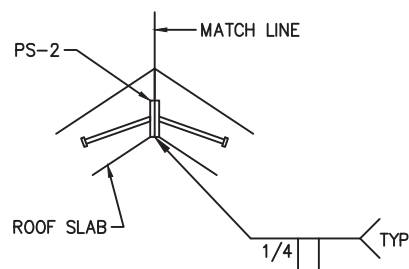
8 PS-19 CASTING DETAIL
SCALE: 3/4"=1'-0"



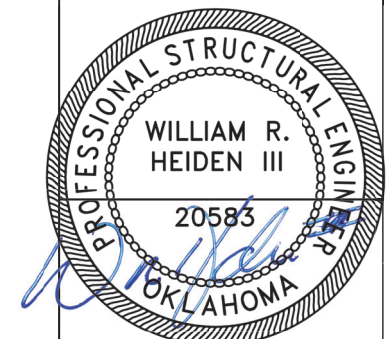
9 MS-4 EMBED CASTING DETAIL
SCALE: 3/4"=1'-0"



10 FLOOR LIFT PLATE DETAIL
SCALE: 3/4"=1'-0"



11 ROOF PEAK WELDMENT DETAIL
SCALE: 3/4"=1'-0"



September 30, 2022

LB Foster
CXT® Products

6701 E Flamingo Ave Bldg 300 Nampa, ID 83687
901 N. Highway 77 Hillsboro, TX 76645
362 Waverly Road Williamstown, WV 26187

PROJECT TITLE
DENALI
DN-389 & DN-390

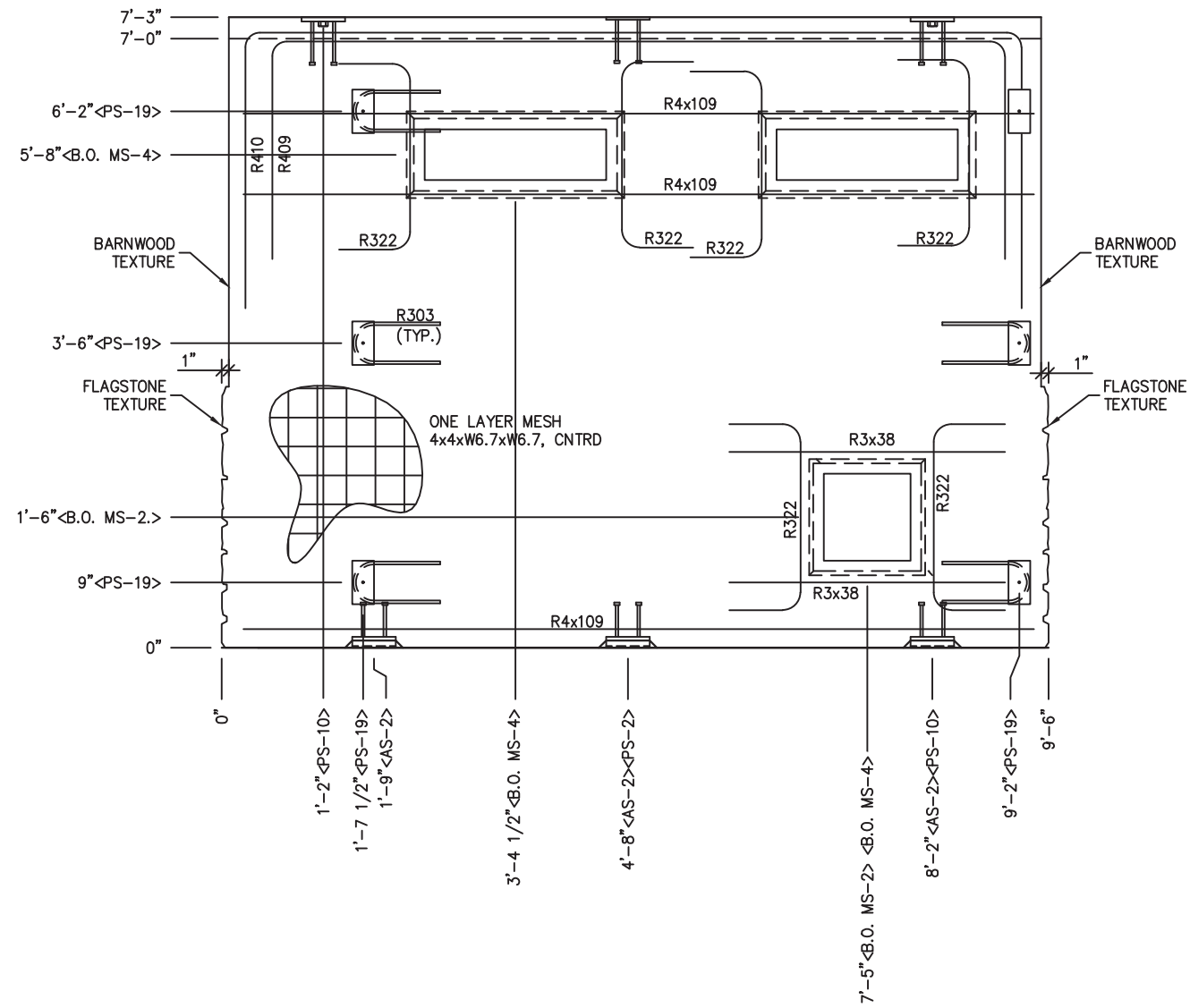
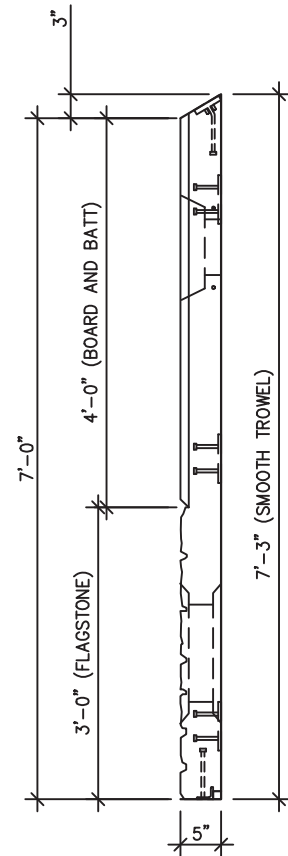
NOTICE
The information contained herein is proprietary and the exclusive property of CXT Incorporated. The information may only be used by the original recipient for the purpose intended. Reproduction or distribution of this information is strictly prohibited without the prior written consent of CXT Incorporated. By allowing use of this information, CXT Incorporated grants no warranty, express or implied, including a warranty of merchantability or of fitness for a particular purpose.
CXT Incorporated

REV.	DESCRIPTION	APPROVAL	DATE

SCALE	AS NOTED	DATE	09-12-22
DRAWN	B AXNESS	FILE NO.	DN-389
CHECKED	MCT	PLOT	16

CASTING
DETAILS

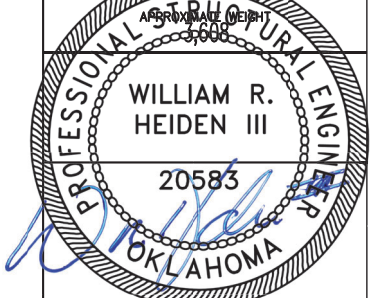
DWG NO.	SHEET	REV.
DN-07	7 24	0



NOTES:
1. REBAR TO BE CENTERED IN PANEL

EMBEDDED MATERIALS	
ITEM	QTY
AS-2	3
PS-2	1
PS-10	2
PS-19	6
R303	5
R409	1
R410	1
R4x109	3
R322	6
R3x38	2
B.O. MS-4	2
B.O. MS-2	1

CU. FT. CONC.	SQ. FT. W.W.F.
24	64



September 30, 2022

LB Foster
CXT® Products

6701 E Flamingo Ave Bldg 300 Nampa, ID 83687
901 N. Highway 77 Hillsboro, TX 76645
362 Waverly Road Williamstown, WV 26187

PROJECT TITLE
DENALI
DN-389 & DN-390

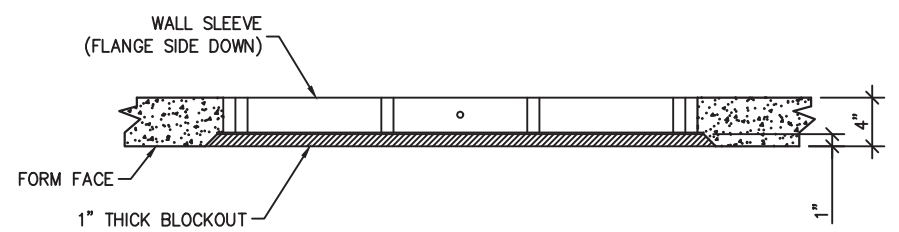
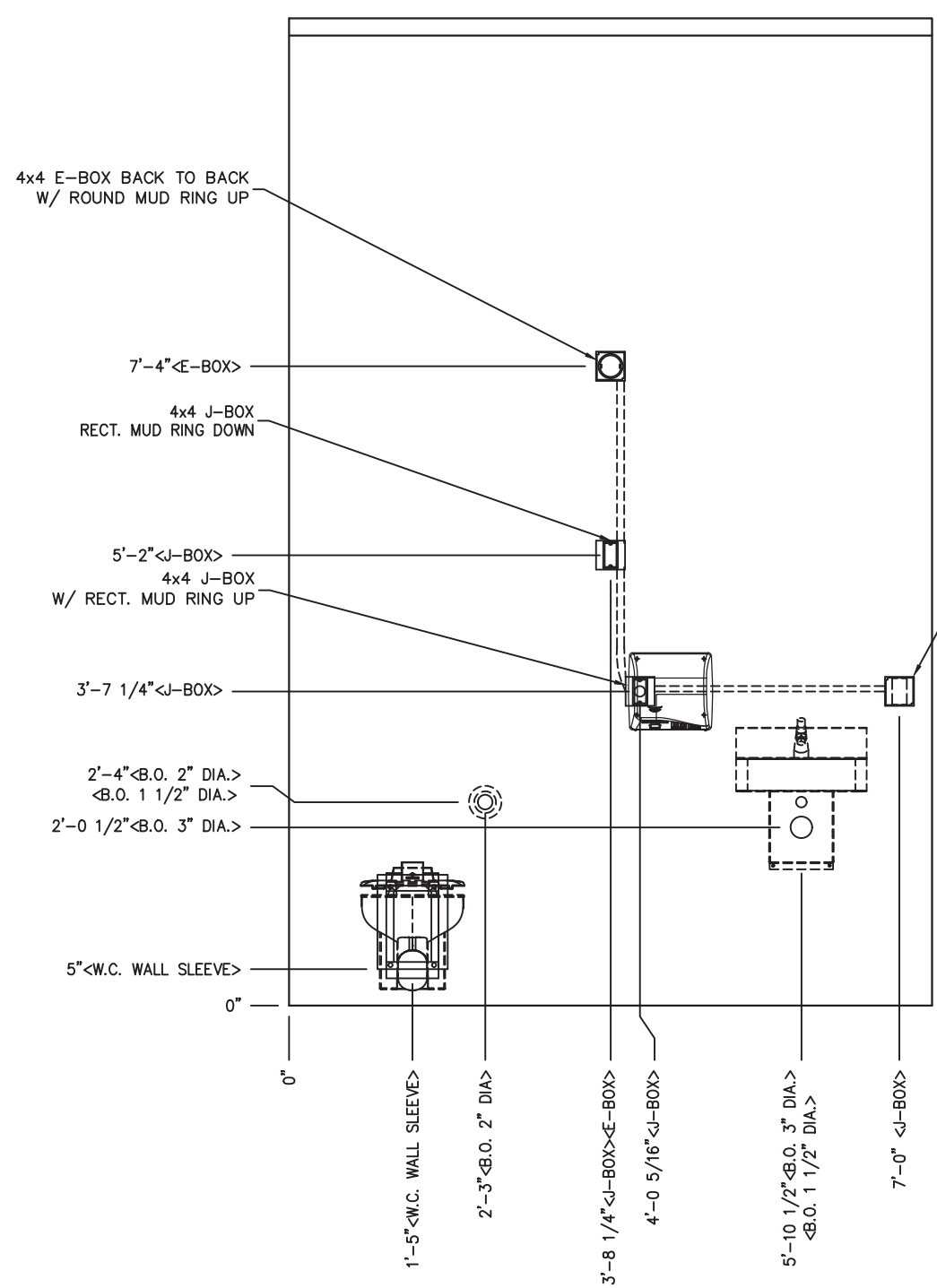
NOTICE
The information contained herein is proprietary and the exclusive property of CXT Incorporated. The information may only be used by the original recipient for the purpose intended. Reproduction or distribution of this information is strictly prohibited without the prior written consent of CXT Incorporated. By allowing use of this information, CXT Incorporated grants no warranty, express or implied, including a warranty of merchantability or of fitness for a particular purpose.
CXT Incorporated

REV.	DESCRIPTION	APPROVAL	DATE
SCALE	1/2"=1'-0"	DATE	09-12-22
DRAWN	B AXNESS	FILE NO.	DN-389
CHECKED	MCT	PLOT	24

WALL PANEL
MARK W1

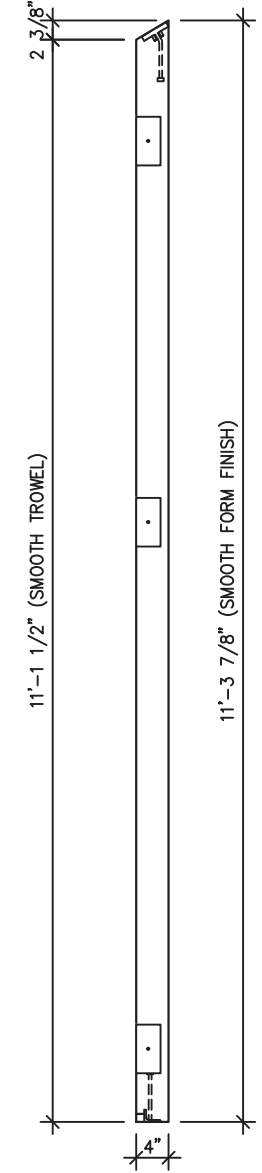
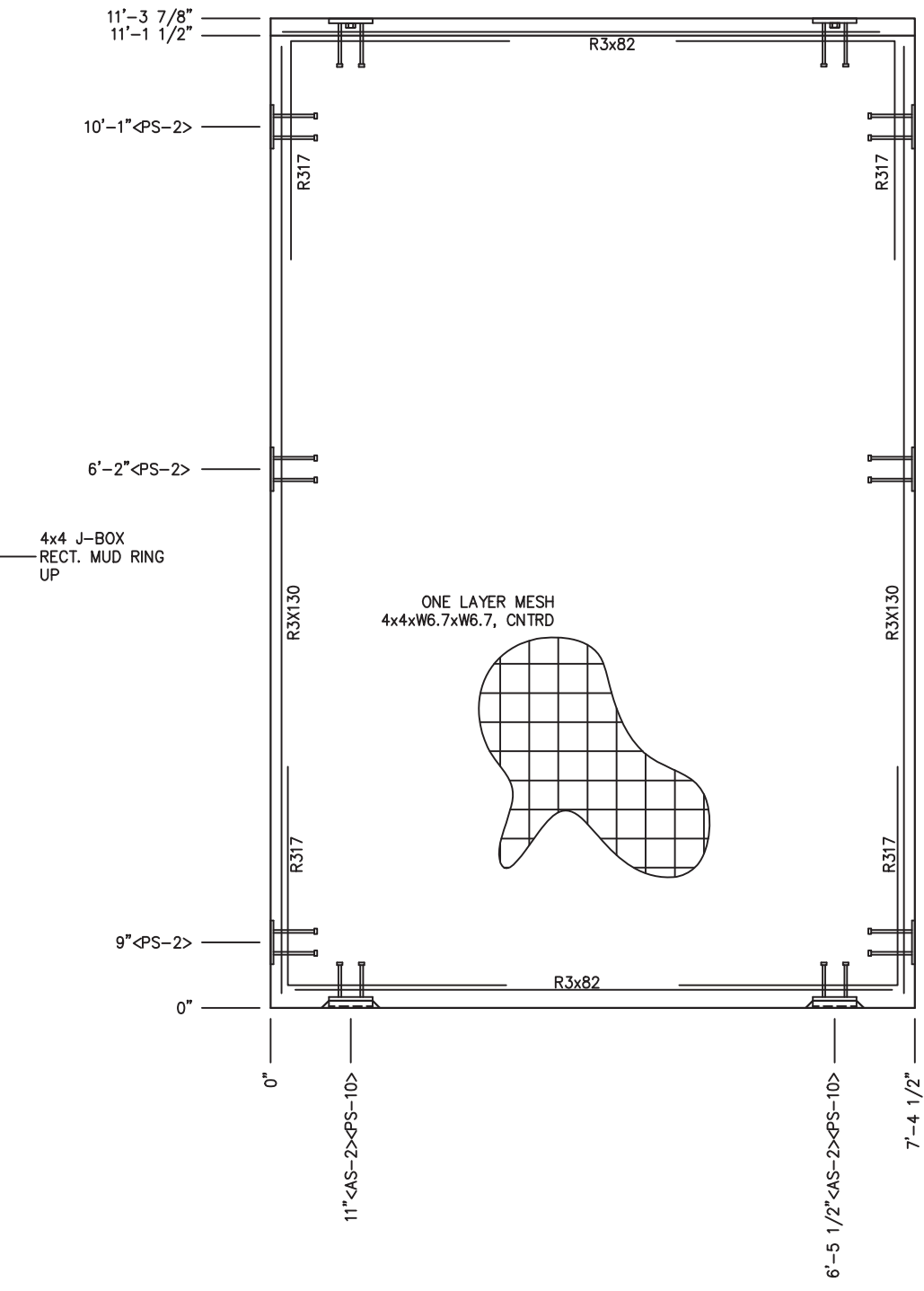
DWG NO.	SHEET	REV.
DN-08	8	0
	24	

BLOCKOUT DETAIL



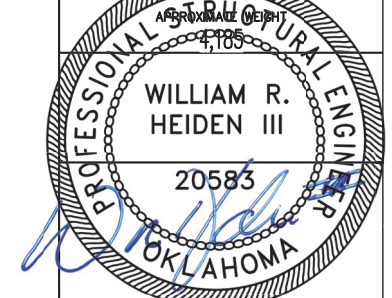
WALL SLEEVE BLOCKOUT DETAIL

EMBED DETAIL



EMBEDDED MATERIALS	
ITEM	QTY
AS-2	2
PS-2	6
PS-10	2
R317	4
R3x82	2
R3x130	4
4x4 E-BOX	2
ROUND MUD RING	1
4x4 J-BOX	3
RECTANGULAR MUD RING	3
B.O. 1 1/2" DIAMETER	1
B.O. 3" DIAMETER	1
WATER CLOSET WALL SLEEVE	1
BLOCKOUT 2" DIAMETER	1

CU. FT. CONC.	SQ. FT. W.W.F.
27.9 (1.04)	88



September 30, 2022

LB Foster
CXT® Products

6701 E Flamingo Ave Bldg 300 Nampa, ID 83687
901 N. Highway 77 Hillsboro, TX 76645
362 Waverly Road Williamstown, WV 26187

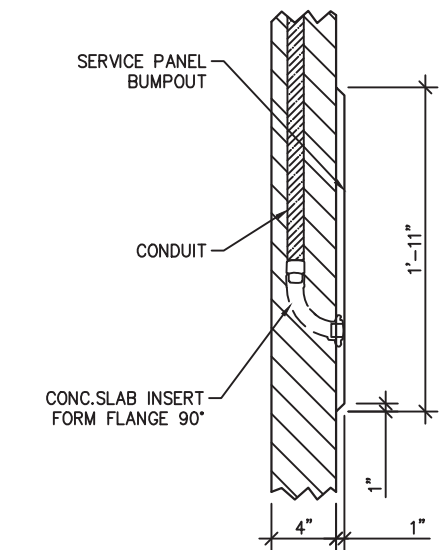
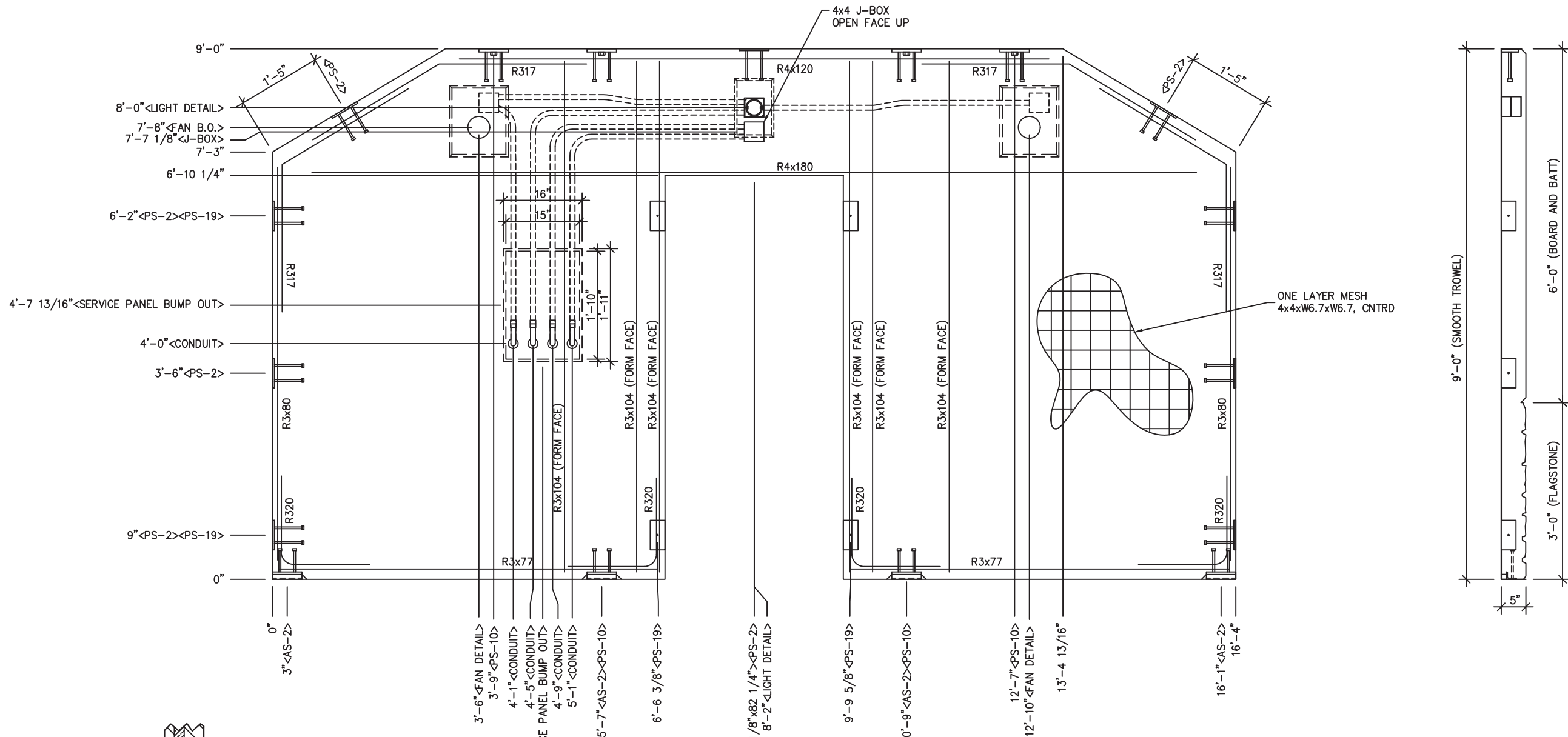
PROJECT TITLE
DENALI
DN-389 & DN-390

NOTICE
The information contained herein is proprietary and the exclusive property of CXT Incorporated. The information may only be used by the original recipient for the purpose intended. Reproduction or distribution of this information is strictly prohibited without the prior written consent of CXT Incorporated. By allowing use of this information, CXT Incorporated grants no warranty, express or implied, including a warranty of merchantability or of fitness for a particular purpose.
CXT Incorporated

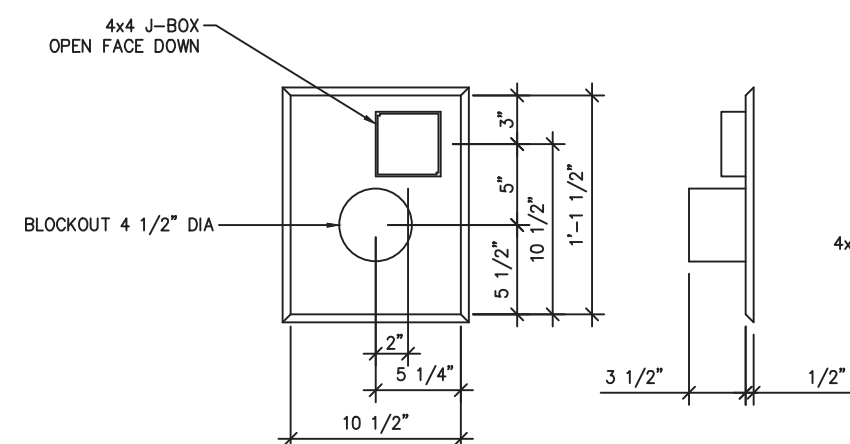
REV.	DESCRIPTION	APPROVAL	DATE
SCALE	1/2"=1'-0"	DATE	09-12-22
DRAWN	B AXNESS	FILE NO.	DN-389
CHECKED	MCT	PLOT	24

WALL PANEL MARK W3		
DWG NO. DN-10	SHEET 10 24	REV. 0

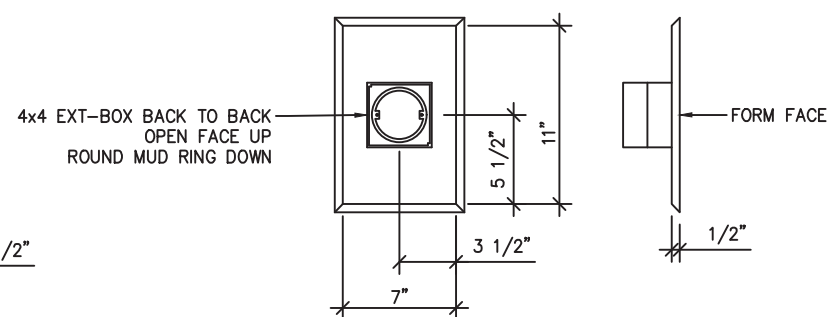
- NOTES:
1. REINFORCING BARS R3x130 TO BE PLACED IN PAIRS ONE EACH FACE OF PANEL W/ 3/4" MIN. COVER



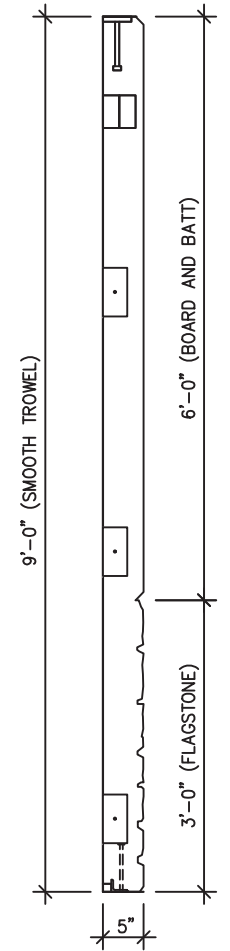
BUMPOUT DETAIL
SEE SHEET DN-23 FOR
ADD'L INFO



FAN DETAIL
RVF4XL

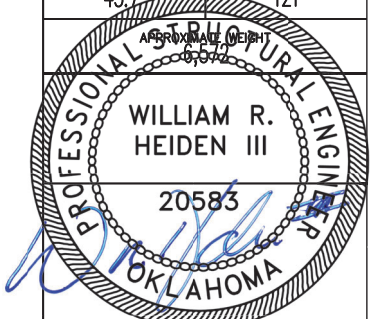


LIGHT DETAIL



EMBEDDED MATERIALS	
ITEM	QTY
AS-2	4
PS-2	9
PS-10	4
PS-19	4
R317	4
R320	4
R3x77	2
R3x80	2
R3x104	6
R4x120	1
R4x180	1
4x4 J-BOX	3
B.O. 36 1/8"x82 1/4"	1
4x4 E-BOX	2
ROUND MUD RING	1
B.O. 4 1/2" DIA.	2

CU. FT. CONC.	SQ. FT. W.W.F.
43.7	121



September 30, 2022

LB Foster
CXT® Products

6701 E Flamingo Ave Bldg 300 Nampa, ID 83687
901 N. Highway 77 Hillsboro, TX 76645
362 Waverly Road Williamstown, WV 26187

PROJECT TITLE
DENALI
DN-389 & DN-390

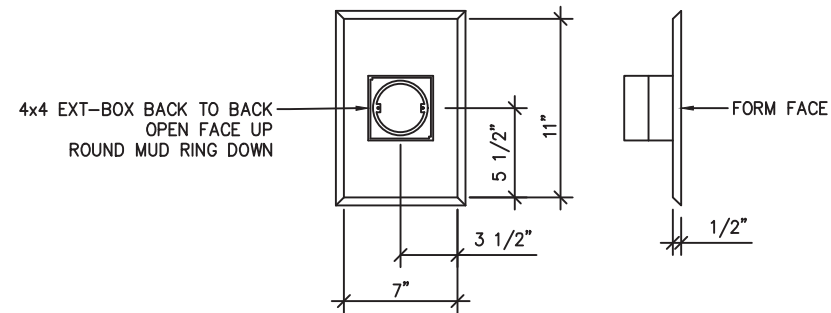
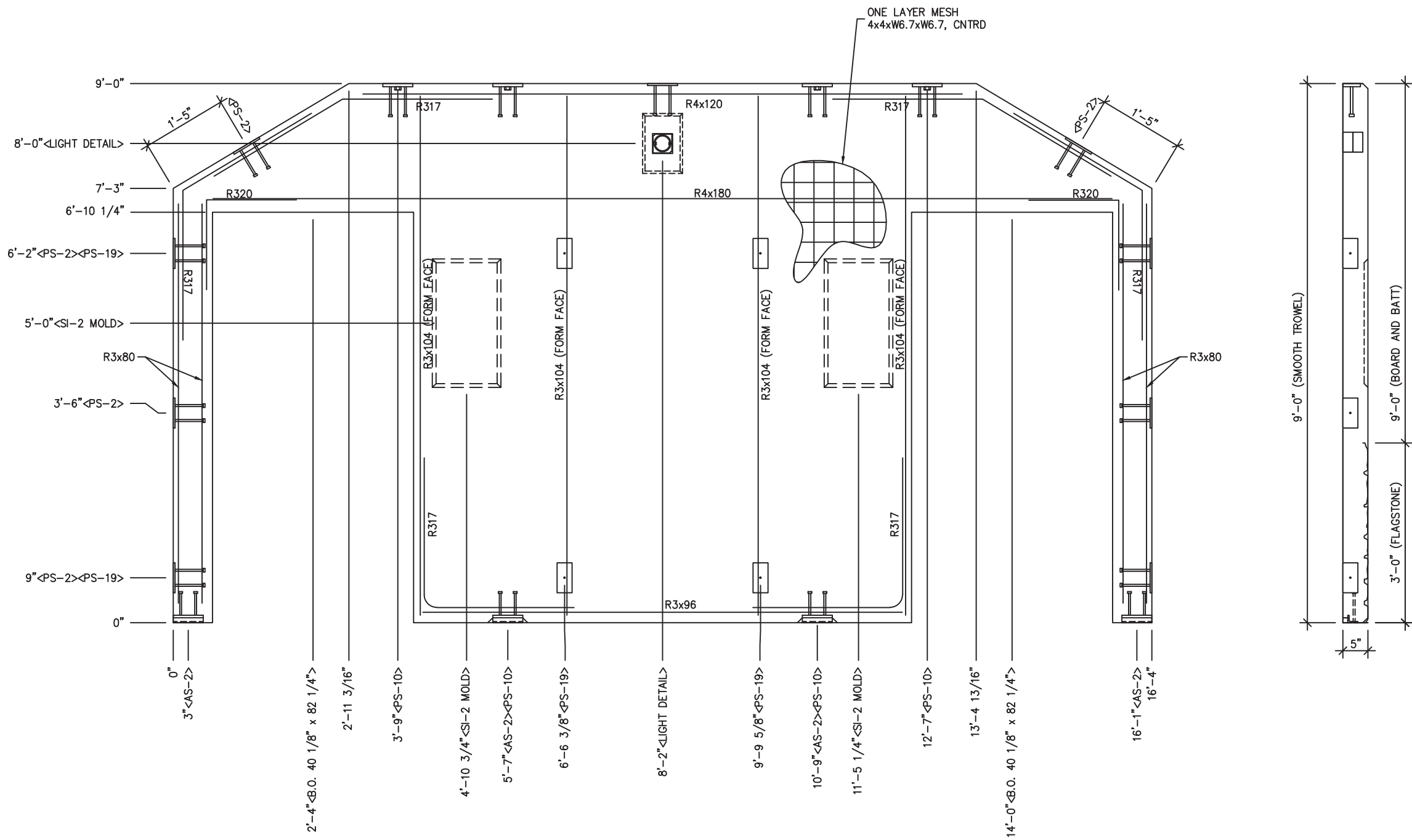
NOTICE
The information contained herein is proprietary and the exclusive property of CXT Incorporated. The information may only be used by the original recipient for the purpose intended. Reproduction or distribution of this information is strictly prohibited without the prior written consent of CXT Incorporated. By allowing use of this information, CXT Incorporated grants no warranty, express or implied, including a warranty of merchantability or of fitness for a particular purpose.
CXT Incorporated

REV.	DESCRIPTION	APPROVAL	DATE
SCALE	1/2"=1'-0"	DATE	09-12-22
DRAWN	B AXNESS	FILE NO.	DN-389
CHECKED	MCT	PLOT	24

WALL PANEL
MARK W5

DWG NO.	SHEET	REV.
DN-12	12	0
	24	

NOTES:
1. REBAR TO BE CENTERED IN PANEL

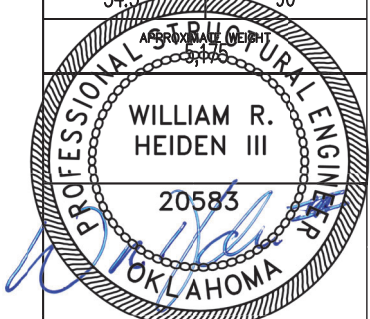


LIGHT DETAIL

NOTES:
1. REBAR TO BE CENTERED IN PANEL

EMBEDDED MATERIALS	
ITEM	QTY
AS-2	4
PS-2	9
PS-10	4
PS-19	4
R317	6
R320	2
R3x96	1
R3x80	4
R3x104	4
R4x120	1
R4x180	1
SI-2 MOLD	2
B.O. 40 1/8"x82 1/4"	2
4x4 E-BOX	2
ROUND MUD RING	1

CU. FT. CONC. 34.5
SQ. FT. W.W.F. 96



September 30, 2022

LB Foster
CXT® Products

6701 E Flamingo Ave Bldg 300 Nampa, ID 83687
901 N. Highway 77 Hillsboro, TX 76645
362 Waverly Road Williamstown, WV 26187

PROJECT TITLE
DENALI
DN-389 & DN-390

NOTICE
The information contained herein is proprietary and the exclusive property of CXT Incorporated. The information may only be used by the original recipient for the purpose intended. Reproduction or distribution of this information is strictly prohibited without the prior written consent of CXT Incorporated. By allowing use of this information, CXT Incorporated grants no warranty, express or implied, including a warranty of merchantability or of fitness for a particular purpose.
CXT Incorporated

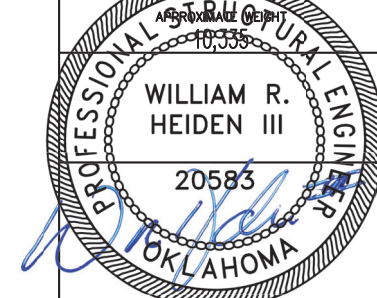
REV.	DESCRIPTION	APPROVAL	DATE
SCALE	1/2"=1'-0"	DATE	09-12-22
DRAWN	B AXNESS	FILE NO.	DN-389
CHECKED	MCT	PLOT	24

WALL PANEL
MARK W6

DWG NO.	SHEET	REV.
DN-13	13	0
	24	

EMBEDDED MATERIALS	
ITEM	QTY
AS-3	4
R303	4
R3x42	16
R320	8
R3x48	8
R3x114	4
R3x200	6
B.O. 32" x 16"	1
FLOOR DRAIN	2
PS-19	18
FLOOR DRAIN PAN 78"x95"	2

CU. FT. CONC. 68.9 (2.88)
SQ. FT. W.W.F. 340



September 30, 2022

LB Foster
CXT® Products

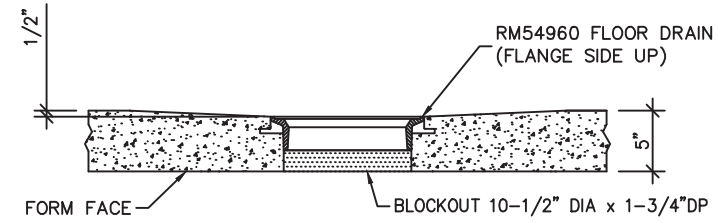
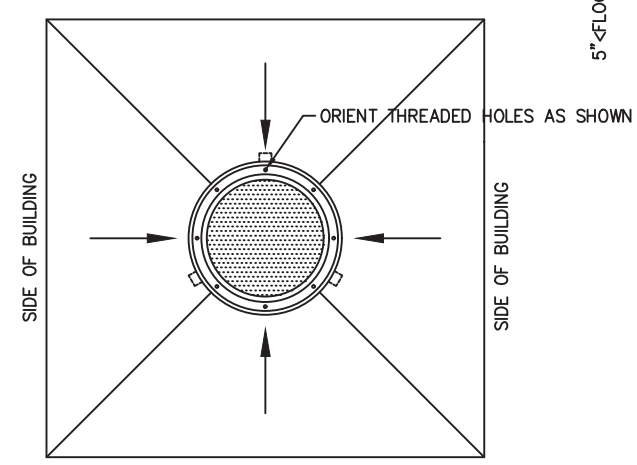
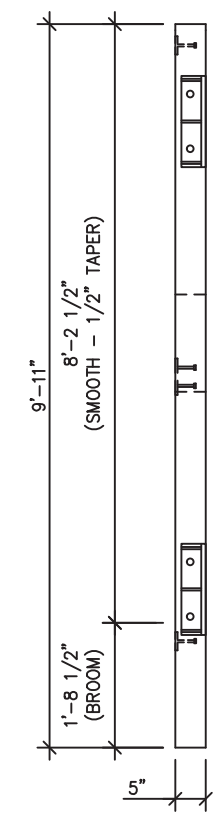
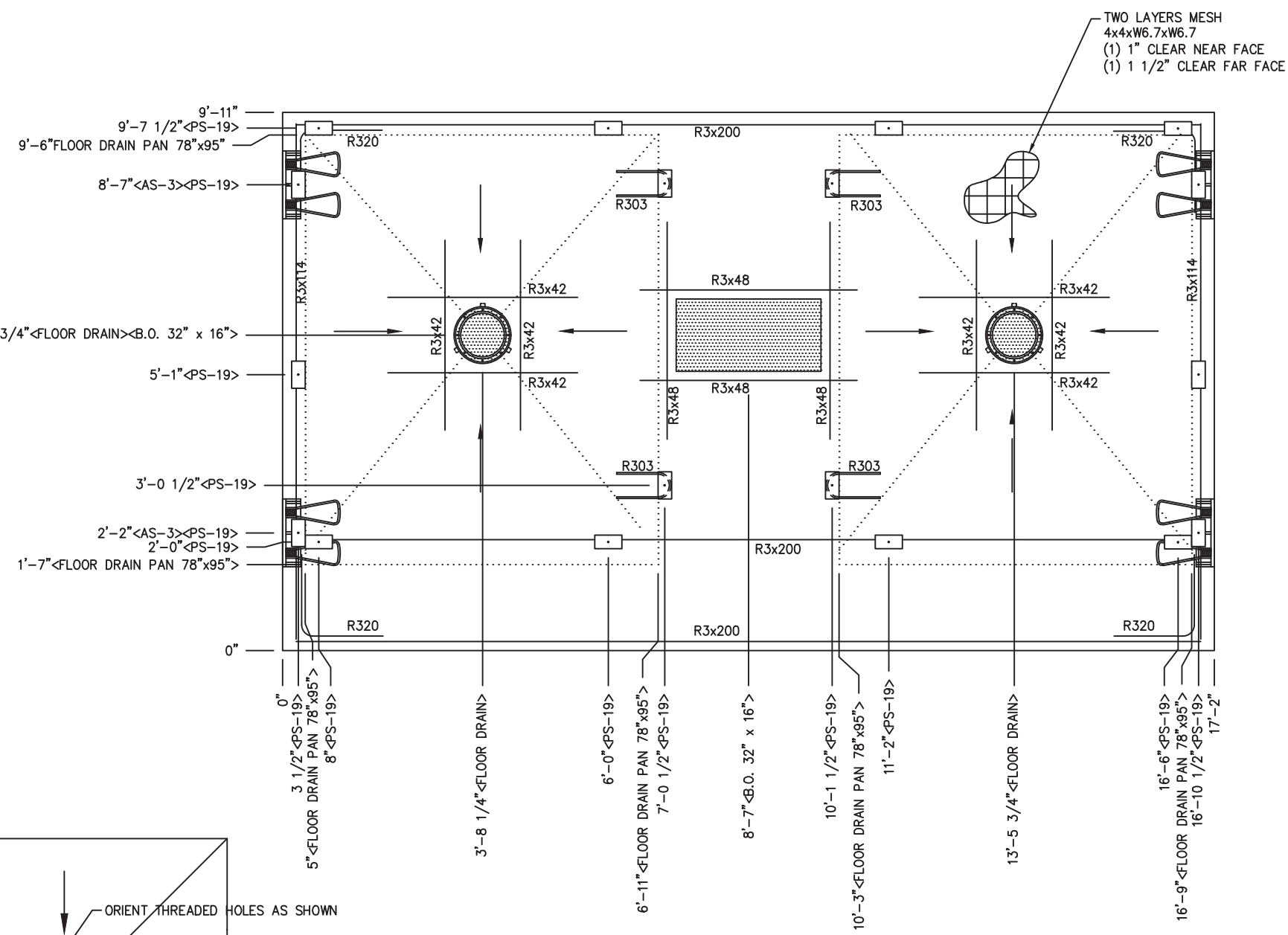
6701 E Flamingo Ave Bldg 300 Nampa, ID 83687
901 N. Highway 77 Hillsboro, TX 76645
362 Waverly Road Williamstown, WV 26187

PROJECT TITLE
DENALI
DN-389 & DN-390

NOTICE
The information contained herein is proprietary and the exclusive property of CXT Incorporated. The information may only be used by the original recipient for the purpose intended. Reproduction or distribution of this information is strictly prohibited without the prior written consent of CXT Incorporated. By allowing use of this information, CXT Incorporated grants no warranty, express or implied, including a warranty of merchantability or of fitness for a particular purpose.
CXT Incorporated

REV.	DESCRIPTION	APPROVAL	DATE
SCALE	3/8"=1'-0"	DATE	09-12-22
DRAWN	B AXNESS	FILE NO.	DN-389
CHECKED	MCT	PLOT	32

FLOOR SLAB MARK F1		
DWG NO.	SHEET	REV.
DN-16	16 24	0



FLOOR DRAIN BLOCKOUT DETAIL

- NOTES:
- SLOPE 1/2" TO FLOOR DRAIN BLOCKOUTS AS INDICATED BY ARROWS.
 - EXCEPT R303, REINFORCING BARS TO BE PLACED IN PAIRS ONE EACH FACE OF PANEL W/ 1-1/4" MIN. COVER

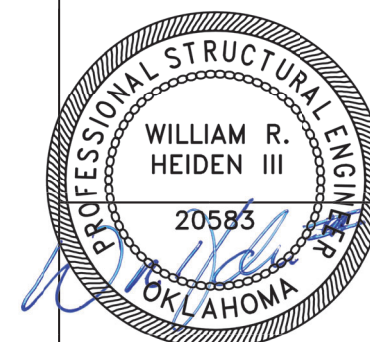
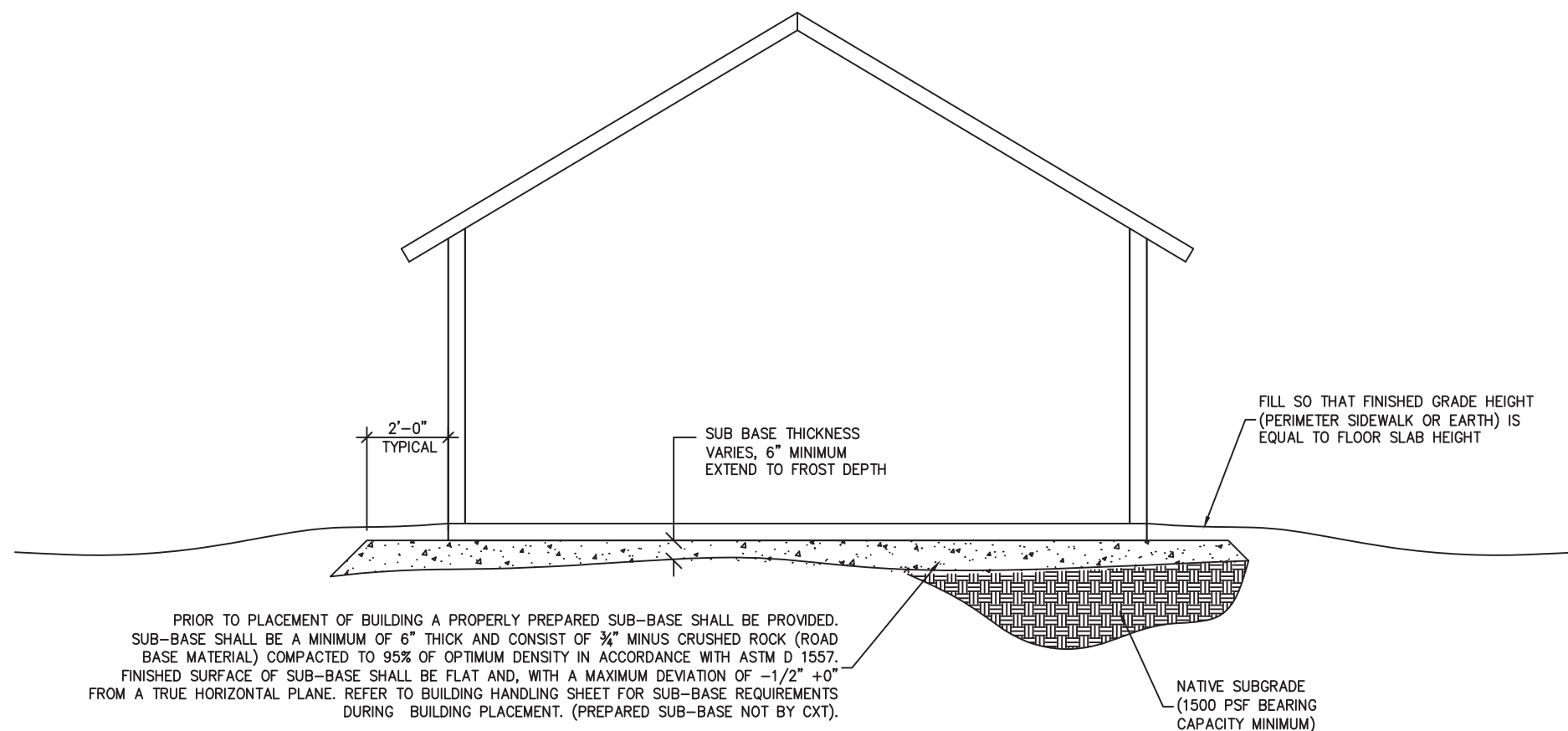
NOTE:

THIS FACTORY ASSEMBLED BUILDING, AS CONSTRUCTED, PROVIDES A RIGID BOX TYPE STRUCTURAL SYSTEM. VERTICAL LOADS ARE TRANSFERRED PRIMARILY THROUGH BEARING WALLS TO THE STRUCTURAL SLAB FLOOR OF THE BUILDING. THE VERTICAL LOADS ARE THEN DISTRIBUTED THROUGH THE REINFORCED CONCRETE FLOOR TO THE PREPARED GRANULAR, NON-FROST SUSCEPTIBLE (NFS) SUB-BASE WHICH DISTRIBUTES THE VERTICAL LOADS IN RELATIVELY UNIFORM FASHION TO THE NATIVE SUB-GRADE. AS WITH MOST CONSTRUCTION, THIS DOES REQUIRE THE NATIVE SUB-GRADE TO BE STRIPPED OF VEGETATION AND TOP SOIL PRIOR TO PLACEMENT OF THE PREPARED GRANULAR SUB-BASE. DUE TO THE INHERENT STIFFNESS OF THE BUILDING, IT WILL REMAIN SAFE AND STRUCTURALLY SOUND IN THE UNLIKELY EVENT OF FREEZING ACTION BELOW THE BUILDING REGARDLESS OF NATURAL FREEZE/ THAW CYCLES ANTICIPATED TO BE ENCOUNTERED IN THE STATE OF OKLAHOMA.

LATERAL LOADS ARE TRANSFERRED TO THE GROUND THROUGH FRICTIONAL RESISTANCE WITHOUT SLIDING OR SHIFTING BETWEEN THE BUILDING FLOOR SLAB AND THE PREPARED SOIL AND GRAVEL SUB-BASE ON WHICH THE BUILDING RESTS. SEISMIC ANALYSES ARE BASED ON LOADS DETERMINED IN ACCORDANCE WITH THE INTERNATIONAL BUILDING CODE USING PARAMETERS, WHICH MEET OR EXCEED THE CODE PRESCRIBED REQUIREMENTS FOR THIS INSTALLATION.

THIS BUILDING AS DESIGNED, RESTING ON A PROPERLY PREPARED GRANULAR SUB-BASE WILL BE SAFE AND STRUCTURALLY SOUND FOR VERTICAL AND LATERAL LOADS AS DISCUSSED ABOVE. A FULL DEPTH FOUNDATION WALL AT THE BUILDING PERIMETER AND AN ANCHORAGE SYSTEM, TYPICAL FOR OTHER TYPES OF BUILDING CONSTRUCTION, ARE NOT REQUIRED FOR THIS BUILDING.

THE 'FOUNDATION' FOR THIS STRUCTURE IS ESSENTIALLY THE COMBINATION OF THE COMPACTED SUB-BASE MATERIAL AND THE BUILDING'S REINFORCED SLAB. THE COMBINATION OF THE COMPACTED SUB-BASE MATERIAL AND THE BUILDING'S REINFORCED SLAB NEED TO BE AT LEAST 12" THICK AND THE COMPACTED SUB-BASE MATERIAL SHALL EXTEND BELOW THE LOCAL FROST DEPTH



September 30, 2022

LB Foster
CXT® Products

6701 E Flamingo Ave Bldg 300 Nampa, ID 83687
901 N. Highway 77 Hillsboro, TX 76645
362 Waverly Road Williamstown, WV 26187

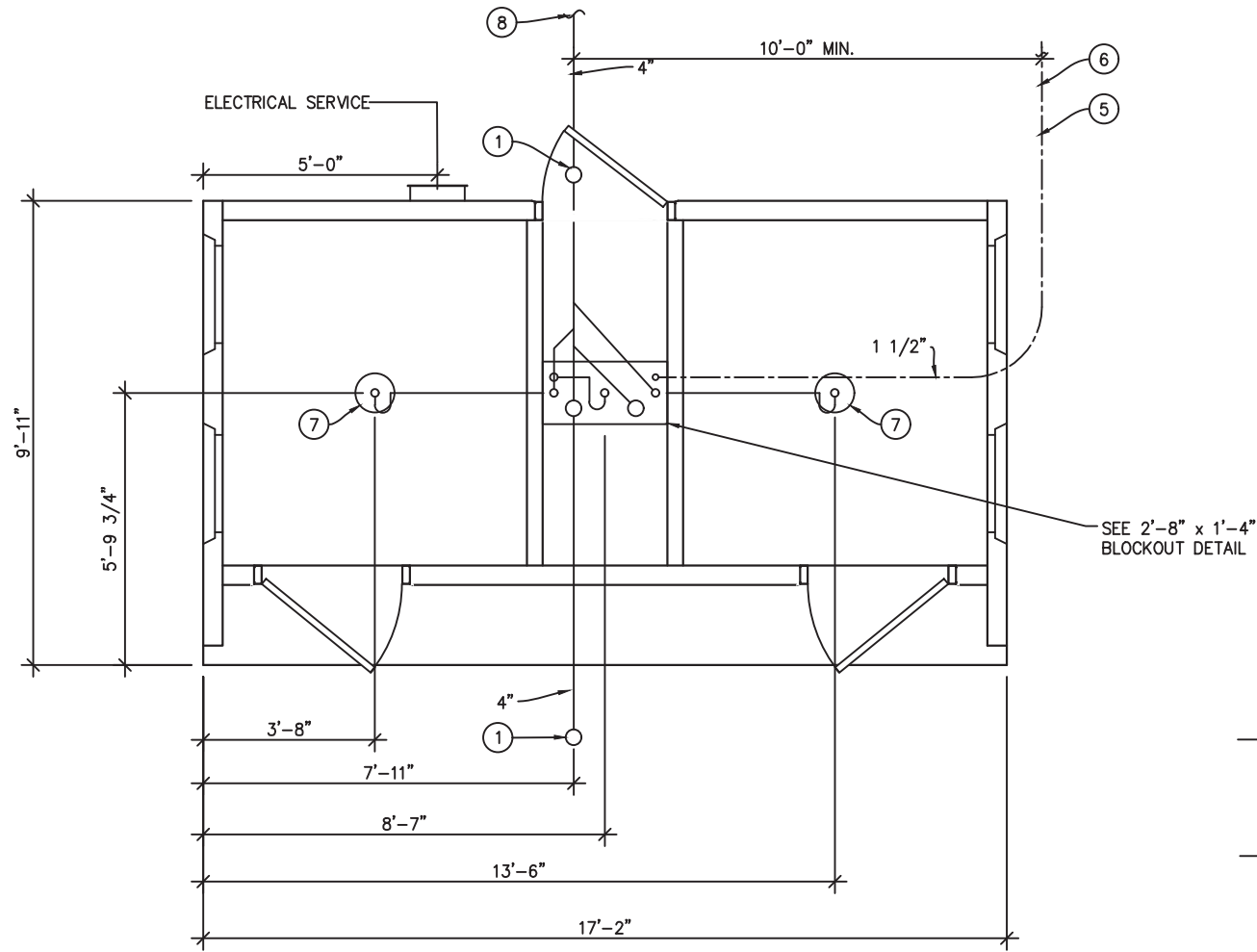
PROJECT TITLE
DENALI
DN-389 & DN-390

NOTICE
The information contained herein is proprietary and the exclusive property of CXT Incorporated. The information may only be used by the original recipient for the purpose intended. Reproduction or distribution of this information is strictly prohibited without the prior written consent of CXT Incorporated. By allowing use of this information, CXT Incorporated grants no warranty, express or implied, including a warranty of merchantability or of fitness for a particular purpose.

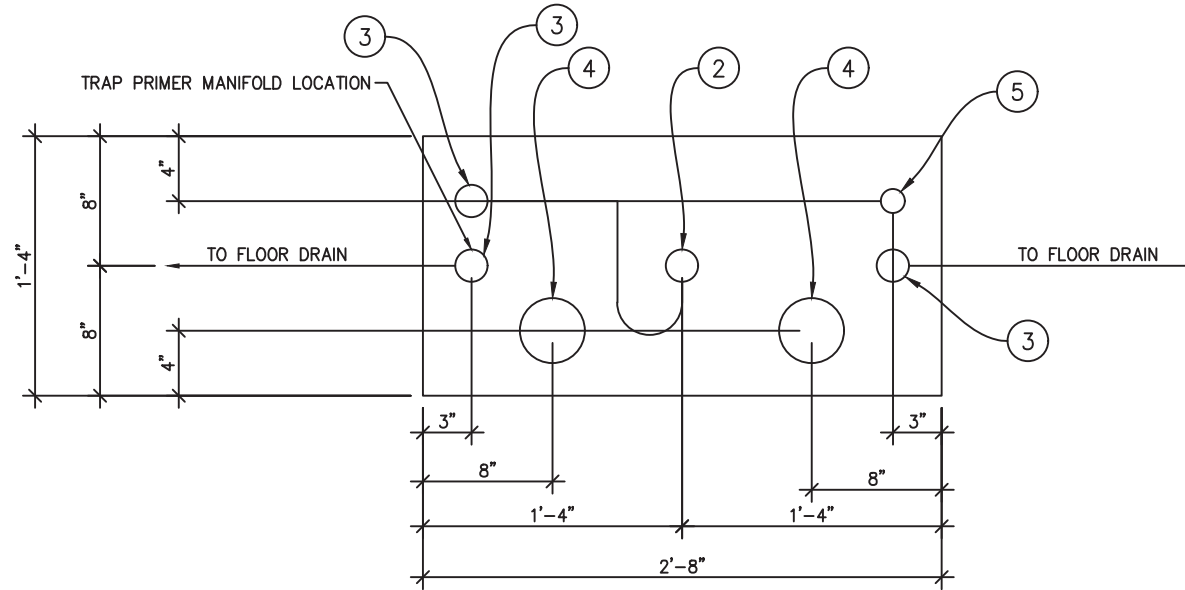
REV.	DESCRIPTION	APPROVAL	DATE
SCALE	N/A	DATE	09-12-22
DRAWN	B AXNESS	FILE NO.	DN-389
CHECKED	MCT	PLOT	N/A

**FOUNDATION
DETAIL**

DWG NO.	SHEET	REV.
DN-17	17 24	0



FLOOR DRAIN BLOCKOUTS & BELOW FLOOR PIPING



2'-8" x 1'-4" BLOCKOUT DETAIL

PIPING LEGEND

- 1 1/2" WATER SERVICE, ANNEALED "SOFT" COPPER, ASTM B88, TYPE 'K' OR 'L'
- BELOW FLOOR WASTE PIPING: SCH 40 PVC, ASTM D2665, TYPE DWV
- BELOW FLOOR VENT PIPING: SCH 40 PVC, ASTM D2665, TYPE DWV

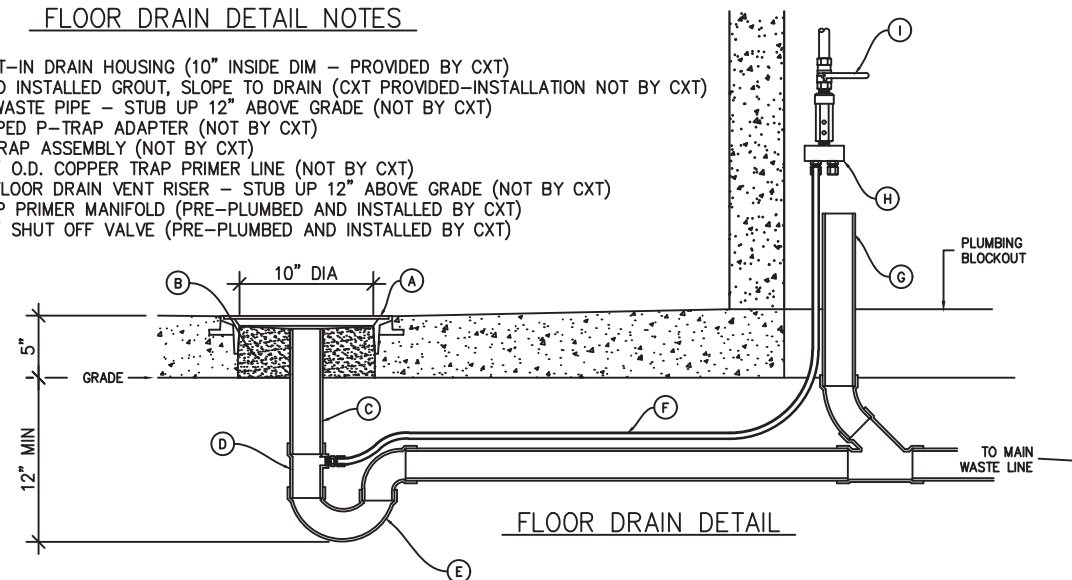
ALL PIPING INDICATED ON THIS SHEET IS NOT BY CXT

BELOW FLOOR PIPING -- KEY NOTES

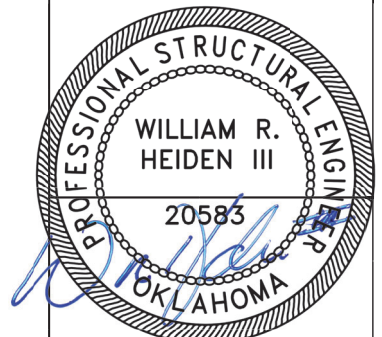
1. 4" CLEAN OUT TO GRADE.
2. 2" FLOOR DRAIN. FIELD INSTALLED TRAP PRIMER SYSTEM IF REQUIRED BY AUTHORITY HAVING JURISDICTION. (2'-8" x 1'-4" BLOCKOUT)
3. 2" VENT PIPES EXTENDED 12" ABOVE FINISHED FLOOR LEVEL, PROVIDE TEST PLUG. (2'-8" x 1'-4" BLOCKOUT)
4. 4" WASTE PIPE EXTENDED 12" ABOVE FINISHED FLOOR LEVEL, PROVIDE TEST PLUG. (2'-8" x 1'-4" BLOCKOUT)
5. 1 1/2" TYPE 'K' OR 'L' ANNEALED "SOFT" COPPER WATER SERVICE EXTENDED 12" ABOVE FINISHED FLOOR LEVEL, PROVIDE CAP AT END. (2'-8" x 1'-4" BLOCKOUT)
6. MIN. BURY PER LOCAL REQUIREMENTS TO PROTECT AGAINST FREEZING AND DAMAGE.
7. 2" FLOOR DRAIN. FIELD INSTALLED TRAP PRIMER SYSTEM IF REQUIRED BY AUTHORITY HAVING JURISDICTION. (10" DIA BLOCKOUT)
8. 30" MIN. BURY, PROVIDE TRACER TAPE.
9. MAXIMUM ALLOWABLE WATER PRESSURE IS TO BE 75PSI.
10. MINIMUM ALLOWABLE WATER PRESSURE IS TO BE 40PSI.

FLOOR DRAIN DETAIL NOTES

- A. CAST-IN DRAIN HOUSING (10" INSIDE DIM - PROVIDED BY CXT)
- B. FIELD INSTALLED GROUT, SLOPE TO DRAIN (CXT PROVIDED-INSTALLATION NOT BY CXT)
- C. 2" WASTE PIPE - STUB UP 12" ABOVE GRADE (NOT BY CXT)
- D. TAPPED P-TRAP ADAPTER (NOT BY CXT)
- E. P-TRAP ASSEMBLY (NOT BY CXT)
- F. 1/2" O.D. COPPER TRAP PRIMER LINE (NOT BY CXT)
- G. 2" FLOOR DRAIN VENT RISER - STUB UP 12" ABOVE GRADE (NOT BY CXT)
- H. TRAP PRIMER MANIFOLD (PRE-PLUMBED AND INSTALLED BY CXT)
- I. 1/2" SHUT OFF VALVE (PRE-PLUMBED AND INSTALLED BY CXT)



FLOOR DRAIN DETAIL



September 30, 2022

LB Foster
CXT® Products

6701 E Flamingo Ave Bldg 300 Nampa, ID 83687
901 N. Highway 77 Hillsboro, TX 76645
362 Waverly Road Williamstown, WV 26187

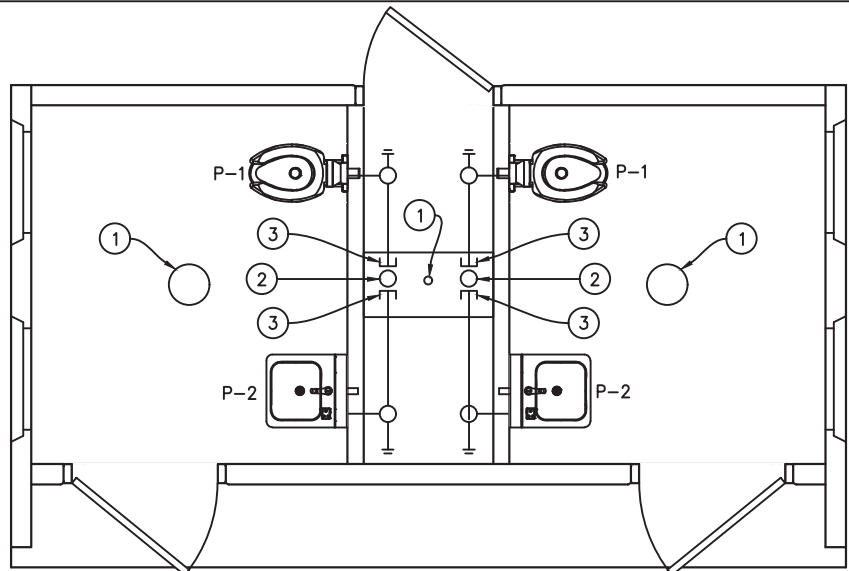
PROJECT TITLE
DENALI
DN-389 & DN-390

NOTICE
The information contained herein is proprietary and the exclusive property of CXT Incorporated. The information may only be used by the original recipient for the purpose intended. Reproduction or distribution of this information is strictly prohibited without the prior written consent of CXT Incorporated. By allowing use of this information, CXT Incorporated grants no warranty, express or implied, including a warranty of merchantability or of fitness for a particular purpose.
CXT Incorporated

REV.	DESCRIPTION	APPROVAL	DATE
SCALE	3/16"=1'-0"	DATE	09-12-22
DRAWN	B AXNESS	FILE NO.	DN-389
CHECKED	MCT	PLOT	64

UNDERGROUND PIPING LAYOUT

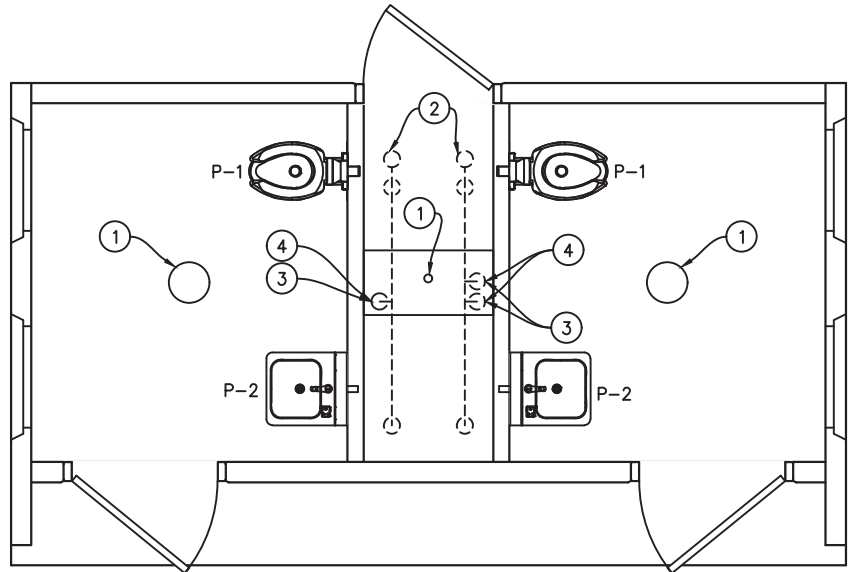
DWG NO.	SHEET	REV.
DN-18	18	0
	24	



WASTE PIPING

WASTE PIPING – KEY NOTES

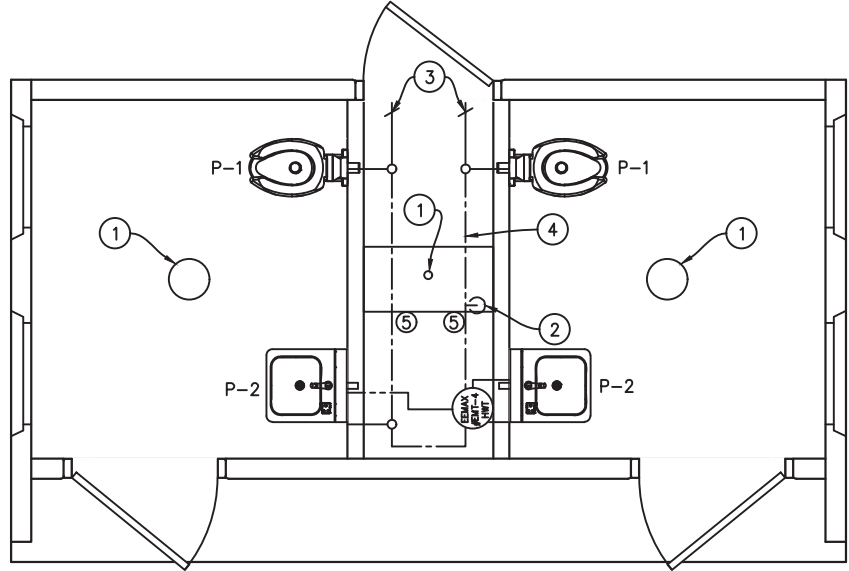
1. 2" FLOOR DRAIN P-7, FIELD INSTALLED (NOT BY CXT)
2. 4" WASTE THROUGH FLOOR, FIELD INSTALLED (NOT BY CXT)
3. PROVIDE TEST PLUG IN END OF WASTE PIPE. CONTINUATION OF PIPING IS FIELD INSTALLED & NOT BY CXT.
4. CAPPED WASTE CONNECTION BETWEEN UNITS, NOT BY CXT. SEE DN-20 WASTE AND VENT RISER DIAGRAM FOR SIZE.



VENT PIPING

VENT PIPING – KEY NOTES

1. 2" FLOOR DRAIN P-7, FIELD INSTALLED (NOT BY CXT)
2. 4" VENT THROUGH ROOF.
3. 2" VENT WITH TEST PLUG.
4. FIELD INSTALLED 2" VENT PIPING FROM FLOOR DRAINS. (NOT BY CXT)



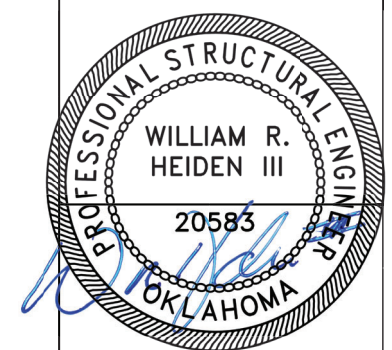
WATER PIPING

WATER PIPING – KEY NOTES

1. 2" FLOOR DRAIN, FIELD INSTALLED (P-7) (NOT BY CXT)
2. FIELD INSTALLED 1 1/2" WATER SUPPLY WITH SHUT-OFF VALVE NEAR FLOOR. (NOT BY CXT)
3. CAPPED WATER LINES. CONNECTION BETWEEN SIDES IS TO BE FIELD INSTALLED. (NOT BY CXT)
4. 3/4" HOSE BIBB WITH VACUUM BREAKER AND WHEEL HANDLE.
5. WATER PIPING ALONG WALL

PIPING LEGEND

- COLD WATER; COPPER, ASTM B88, TYPE 'K' OR 'L'
- HOT WATER; COPPER, ASTM B88, TYPE 'K' OR 'L'
- VENT PIPING; SCH 40 PVC, ASTM D2665, TYPE DWV
- WASTE PIPE; SCH 40 PVC, ASTM D2665, TYPE DWV
- FIELD PIPING; (NOT BY CXT)



September 30, 2022

LB Foster
CXT® Products

6701 E Flamingo Ave Bldg 300 Nampa, ID 83687
901 N. Highway 77 Hillsboro, TX 76645
362 Waverly Road Williamstown, WV 26187

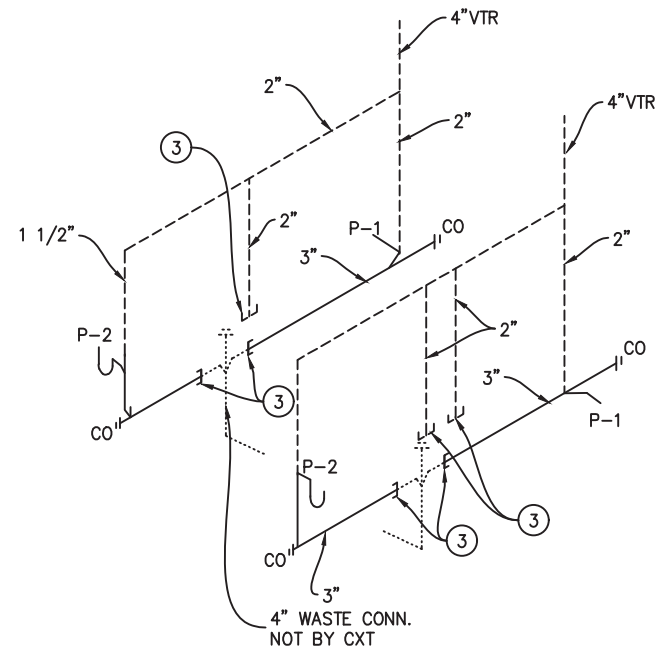
PROJECT TITLE
DENALI
DN-389 & DN-390

NOTICE
The information contained herein is proprietary and the exclusive property of CXT Incorporated. The information may only be used by the original recipient for the purpose intended. Reproduction or distribution of this information is strictly prohibited without the prior written consent of CXT Incorporated. By allowing use of this information, CXT Incorporated grants no warranty, express or implied, including a warranty of merchantability or of fitness for a particular purpose.
CXT Incorporated

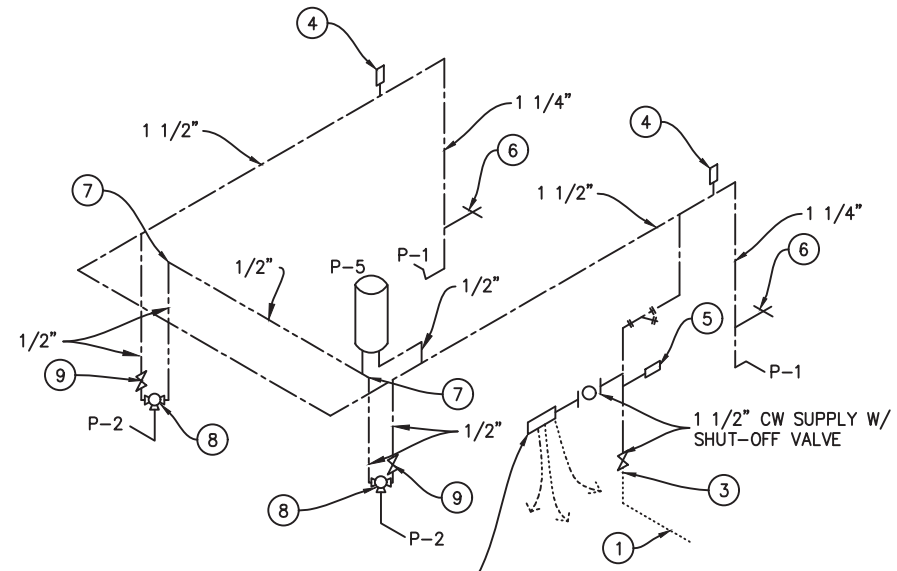
REV.	DESCRIPTION	APPROVAL	DATE
SCALE	3/16"=1'-0"	DATE	09-12-22
DRAWN	B AXNESS	FILE NO.	DN-389
CHECKED	MCT	PLOT	64

PLUMBING
PLANS & NOTES

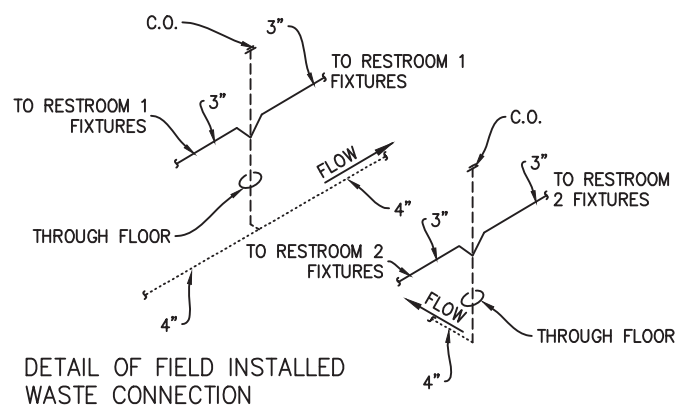
DWG NO.	SHEET	REV.
DN-19	19	0
	24	



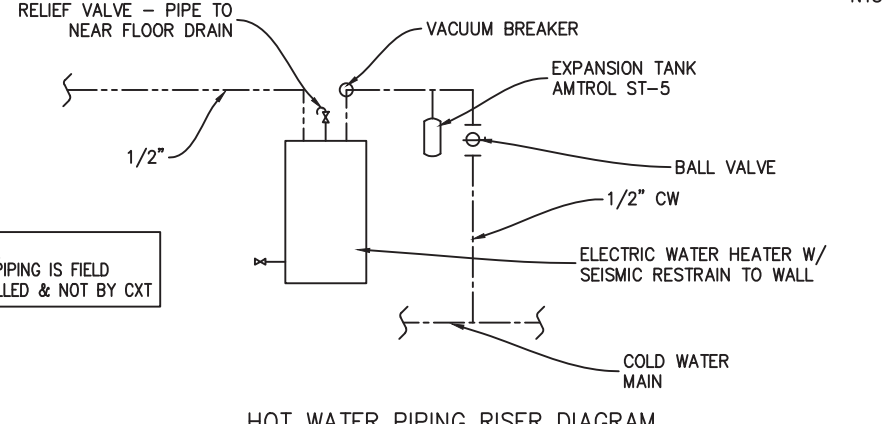
WASTE & VENT RISER DIAGRAM NTS



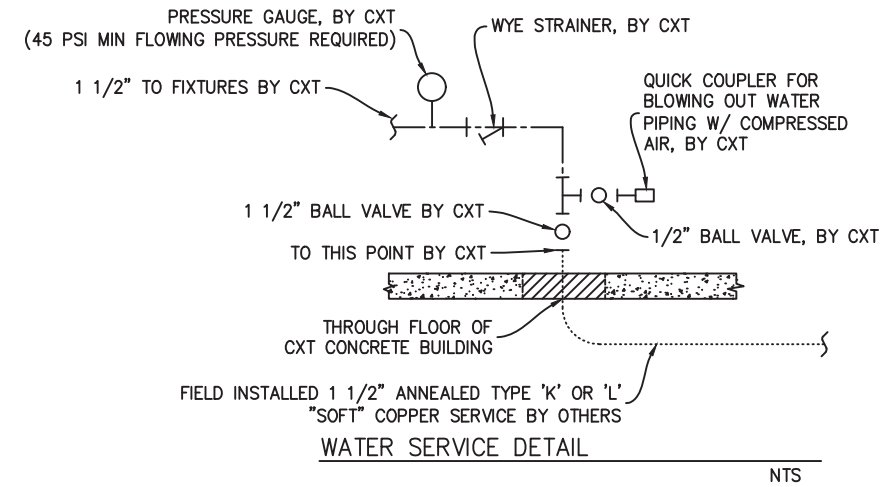
WATER PIPING DIAGRAM NTS



DETAIL OF FIELD INSTALLED WASTE CONNECTION NTS



HOT WATER PIPING RISER DIAGRAM NTS



WATER SERVICE DETAIL NTS

PIPING LEGEND

- COLD WATER; COPPER, ASTM B88, TYPE "K" OR "L"
- HOT WATER; COPPER, ASTM B88, TYPE "K" OR "L"
- VENT PIPING; SCH 40 PVC, ASTM D2665, TYPE DWV
- WASTE PIPE; SCH 40 PVC, ASTM D2665, TYPE DWV
- FIELD PIPING; (NOT BY CXT)
- WYE STRAINER

NOTES:

1. 1-1/2" COLD WATER THRU FLOOR, NOT BY CXT
2. 1/2" BALL VALVE & CAPPED CW LINE. FIELD INSTALLED TRAP PRIMER VALVE AND PIPING TO FLOOR DRAINS IF REQUIRED BY AUTHORITY HAVING JURISDICTION.
3. TO THIS POINT BY CXT.
4. ASSE 1010 WATER HAMMER ARRESTOR SIOUX CHIEF HYDRA-RESTOR #654-C OR EQUAL
5. 1/2" AIR QUICK CONNECTION W/ BALL VALVE FOR BLOWING OUT WATER PIPING. (SEE WATER SERVICE DETAIL)
6. 3/4" HOSE BIBB W/ SCREW ON VACUUM BREAKER
7. INSULATE HOT WATER PIPING FROM HTR TO FIXTURE W/ 1" (R-3.6) PRE-MOLDED FIBERGLASS PIPE.
8. ASSE 1070 WATER TEMPERATURE LIMITING DEVICE.
9. PROVIDE SHUT-OFF VALVES ON HOT AND COLD WATER SUPPLY FOR EACH FIXTURE



September 30, 2022

SYM	DESCRIPTION	MANUFACTURER	CXT PART NUMBER	FLUSH VL/FAUCET	SUPPLIES	QTY	HW	CW	WASTE	VENT	SUPPLIES / NOTES
P-1	WATER CLOSET (PUSH BUTTON)	ACORN	PENAL-WARE 1680 SERIES 1680-W-1	SLOAN "ROYAL" #952-1.6 L-3 W=4"	SLOAN HY33A	2		1-1/4"	3"	2"	1. OFFSET FLUSH VALVE TAILPIECE PER ADA, RIGHT OR LEFT HAND, AS REQUIRED. PROVIDE FLUSH VALVE FOR 3" WALL THICKNESS. 2. MOUNT RIM AT 17" ABOVE FLOOR. 3. USE CLOSET GASKET JG13534 AND Z1203 FINISH KIT
P-2	LAVATORY (PUSH BUTTON)	ACORN	PENAL-WARE 1652 SERIES 2652-1-BP-04-M	SYMONS SLS-7000		2	1/2"	1/2"	1-1/2"	1-1/2"	1. HAMMER ARRESTOR JRS520-T-C, FLOOR DRAIN S2005A025NBLP, TRAP PRIMER-MIFAB MM500, DISTR UNIT- MIFAB 2. 1/2X15 COMP ANG LAV BSCR1915AC 3. 3 PC COVER SET PF202WH.
P-3	NOT USED										
P-4	NOT USED										
P-5	WATER HEATER	EEMAX	EMT-4			1	1/2"	1/2"	-	-	1. 4 GALLON 120V WALL MOUNTED WATER HEATER. PROVIDE GFCI OUTLET IN CHASE PER MFR RECOMMENDATIONS.
P-6	NOT USED										
P-7	FLOOR DRAIN	TRAVIS	54960-CXT			2					1. TRAP PRIMER- MIFAB MM500, DISTR UNIT- MIFAB ASSE 1018 OR ASSE 1044
		SIOUX CHIEF (CHASE)	840-2A			1			2"	2"	

LB Foster
CXT® Products

6701 E Flamingo Ave Bldg 300 Nampa, ID 83687
901 N. Highway 77 Hillsboro, TX 76645
362 Waverly Road Williamstown, WV 26187

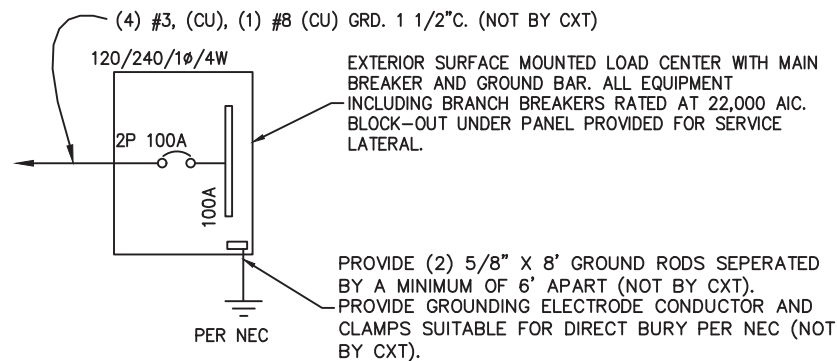
PROJECT TITLE
DENALI
DN-389 & DN-390

NOTICE
The information contained herein is proprietary and the exclusive property of CXT Incorporated. The information may only be used by the original recipient for the purpose intended. Reproduction or distribution of this information is strictly prohibited without the prior written consent of CXT Incorporated. By allowing use of this information, CXT Incorporated grants no warranty, express or implied, including a warranty of merchantability or of fitness for a particular purpose.
CXT Incorporated

REV.	DESCRIPTION	APPROVAL	DATE
SCALE	N/A	DATE	09-12-22
DRAWN	B AXNESS	FILE NO.	DN-389
CHECKED	MCT	PLOT	N/A

PLUMBING DETAILS,
DIAGRAMS, & SCHEDULES

DWG NO.	SHEET	REV.
DN-20	20	0
	24	



ONE-LINE POWER DIAGRAM

GENERAL ELECTRICAL NOTES

- RECESSED JUNCTION BOXES FOR SINGLE DEVICES SHALL HAVE SINGLE GANG MUD RINGS CAST IN CONCRETE WALLS.
- ALL RECEPTACLES SHALL BE GFCI PROTECTED BY CIRCUIT BREAKERS, OR BY OTHER GFCI RECEPTACLES.
- ALL CONDUIT SHALL BE SIZED PER NEC. EXPOSED CONDUIT SHALL BE EMT/FMC, RECESSED SHALL BE PVC.
- INSTALL ALL WIRING IN CONDUIT OR RELATED ENCLOSURES.
- ALL ELECTRICAL INSTALLATIONS SHALL MEET THE 2017 NATIONAL ELECTRICAL CODE.
- MINIMUM WIRE SIZE SHALL BE #12 AWG COPPER, THHN INSULATION UNLESS NOTED OTHERWISE.
- ROUTE ALL CONDUITS IN UTILITY ROOM AT CEILING OR FACE OF WALLS.
- ELECTRICAL DRAWINGS ARE DIAGRAMMATIC IN NATURE & MAY NOT SHOW EXACT LOCATIONS OF DEVICES. REFER TO WALL PANEL & OTHER DRAWINGS FOR EXACT LOCATIONS OF J-BOXES, ETC..
- ALL CONDUCTORS AND CABLES MUST BE PROPERLY TERMINATED IN APPROVED BOXES, BEFORE CONNECTING THE CIRCUIT TO THE BREAKER AND BEFORE RECEIVING FINAL INSPECTION APPROVAL IN THE FACTORY
- PROVIDE CIRCUIT BREAKER LOCK OUT TABS FOR ALL HAND DRYERS

EXHAUST FAN SCHEDULE							
SYM	MFR	MODEL #	CFM	SONES	VOLTS	AMPS	NTS.
EF-1	FANTECH	RVF-4XL	180	6.0	120	0.84	1

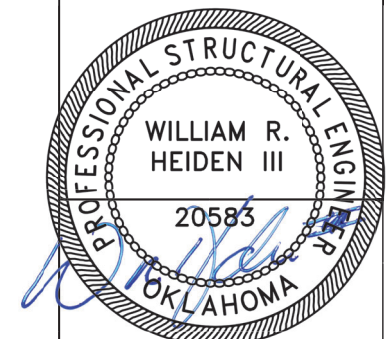
NOTE

- FANS LISTED FOR WET LOCATION, CONTROL VIA OCCUPANCY SENSOR. MOUNT SPEED CONTROL IN CHASE.

PANEL SCHEDULE												
AMP 100					PANEL		TOTAL CONNECTED VA LOAD			4,525		
SURFACE MOUNT					120/240V, 1P, 4W		TOTAL CALCULATED VA LOAD			4,817		
CIRCUIT					CIRCUIT							
NO.	DESCRIPTION	OCF	TYPE	LOAD (VA)	(A)	PH.	NO.	DESCRIPTION	OCF	TYPE	LOAD (VA)	(A)
1	PHOTO CONTROLLED EXTERIOR LIGHTS	1P/20A	C	28	0.2	A	2	CHASE RECEPTACLE	1P/20A	R	180	1.5
3	CHASE LIGHT	1P/20A	N	25	0.2	B	4	RESTROOM #2 LIGHT & FAN	1P/20A	N	126	1.1
5	RESTROOM #1 LIGHT & FAN	1P/20A	N	126	1.1	A	6	RESTROOM #2 HAND DRYER	1P/20A	N	1,140	9.5
7	RESTROOM #1 HAND DRYER	1P/20A	L	1,140	9.5	B	8	RESTROOM RECEPTACLES	1P/20A	N	360	3.0
9	EEMAX WATER HEATER GFCI OUTLET	1P/20A	R	1,400	11.7	A	10					
11						B	12					
13						A	14					
15						B	16					
17						A	18					
19						B	20					
NOTE: MAXIMUM ALLOWABLE AIC IS 22K AMPS, PANEL MODIFICATIONS WILL BE REQUIRED (NOT BY CXT) IF TRANSFORMER CAPACITY EXCEEDS 175 KVA.							LOAD				CONNECTED	CALCULATED
							(C)ONTINUOUS		28 x1.25		35 VA	
							(R)EC (1ST 10KVA)		1580 x1.00		1580 VA	
							(N)ON-CONTINUOUS		1,777 x1.00		1,777 VA	
							(L)ARGEST MOTOR		1,140 x1.25		1,425 VA	
							TOTAL LOAD		4,525		4,817 VA	20.1 AMPS

LIGHTING FIXTURE SCHEDULE			
FIXTURE NUMBER	VOLTAGE	WATTS	DESCRIPTION
A	120	25	LUMINAIRE VPF84 INTERIOR LIGHT FIXTURE, VPF8-4FT-NODIM-25W-40K-MVOLT-CLP-WHT-WL-20CC SURFACE MOUNTED, LED LAMP 4 FT, WRAP AROUND LENS, LOW TEMPERATURE DRIVER, OCCUPANCY SENSOR W/ ADDITIONAL OCCUPANCY SENSOR FOR FAN CONTROL
B	120	14	SWOOP 610 LED EXTERIOR LIGHT, YWP610-14W HP-3500K-120-CP-BRZ-CAB/PC EXTERIOR, VANDAL RESISTANT, WALL MOUNTED, 14 WATT, CLEAR PRISMATIC LENS, BUILT IN PHOTOELECTRIC CONTROL
C	120	25	LUMINAIRE VPF84 INTERIOR LIGHT FIXTURE, VPF8-4FT-NODIM-25W-40K-MVOLT-CLP-WHT-WL SURFACE MOUNTED, LED LAMP 4 FT, WRAP AROUND LENS, LOW TEMPERATURE DRIVER, SWITCH ACTIVATED

NOTE : THE SOURCE OF EFFICACY OF EXTERIOR LIGHTING IS TO BE A MINIMUM OF 45 LUMENS PER WATT.



September 30, 2022

LB Foster
CXT® Products

6701 E Flamingo Ave Bldg 300 Nampa, ID 83687
901 N. Highway 77 Hillsboro, TX 76645
362 Waverly Road Williamstown, WV 26187

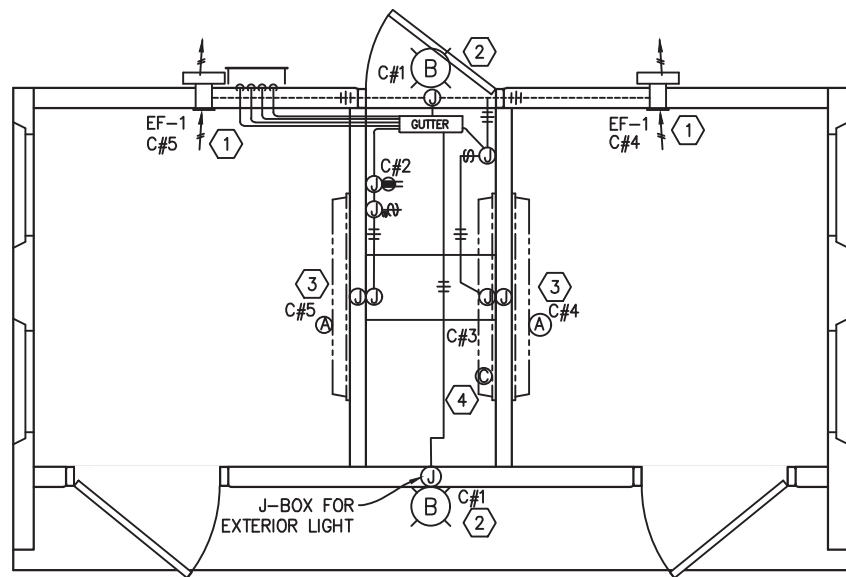
PROJECT TITLE
DENALI
DN-389 & DN-390

NOTICE
The information contained herein is proprietary and the exclusive property of CXT Incorporated. The information may only be used by the original recipient for the purpose intended. Reproduction or distribution of this information is strictly prohibited without the prior written consent of CXT Incorporated. By allowing use of this information, CXT Incorporated grants no warranty, express or implied, including a warranty of merchantability or of fitness for a particular purpose.
CXT Incorporated

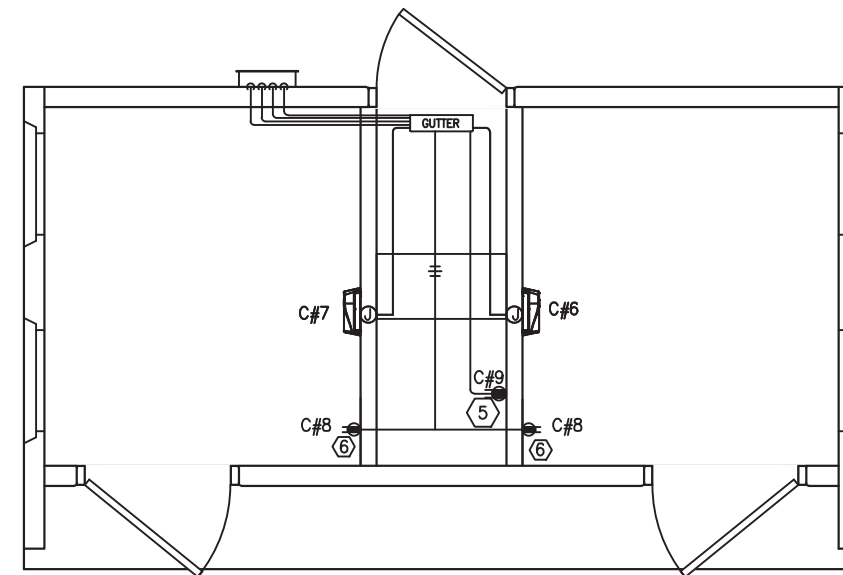
REV.	DESCRIPTION	APPROVAL	DATE
SCALE	N/A	DATE	09-12-22
DRAWN	B AXNESS	FILE NO.	DN-389
CHECKED	MCT	PLOT	N/A

ELECTRICAL NOTES,
LEGEND & SCHEDULES

DWG NO.	SHEET	REV.
DN-21	21	0
	24	



LIGHTING AND EXHAUST FAN PLAN



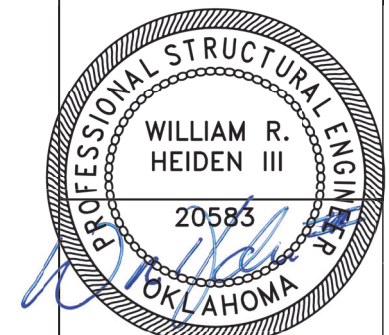
HEATER PLAN, HAND DRYER, AND RECEPTACLE PLAN

KEY NOTES

- ①. CIRCUIT AS NEEDED FOR THE LOAD OF THE EXHAUST FANS. WIRE THROUGH OCCUPANCY SENSOR AND SPEED SWITCH IN CHASE. SPEED SWITCH FOR FANS LOCATED BY PANEL.
- ②. LIGHT FIXTURE TO BE CONTROLLED BY INTEGRAL PHOTOCELL. ROUTE WIRING IN CONCEALED CONDUIT.
- ③. RESTROOM LIGHTS TO OPERATE BY OCCUPANCY SENSOR.
- ④. LIGHT FIXTURE TO BE CONTROLLED BY SWITCH.
- ⑤. GFCI OUTLET FOR HOT WATER HEATER
- ⑥. RESTROOM GFCI
- ⑦. NOT USED
- ⑧. NOT USED

SYMBOLS

- GFI RECEPTACLE
- ON / OFF SWITCH
- SPEED SWITCH
- JUNCTION BOX
- RECESSED JUNCTION BOX
- LOAD CENTER "A"
- WALL MOUNTED LED FIXTURE
- EXTERIOR LIGHT FIXTURE
- HAND DRYER
- CIRCUIT NUMBER
- SURFACE MOUNTED CONDUIT, CROSSHATCH OR SLASH AND NUMBER DENOTES WIRES, (ALL #12AWG UNO, UNLESS NOTED) ONE WIRE TO BE GROUND
- CONCEALED CONDUIT



September 30, 2022

LB Foster
CXT® Products

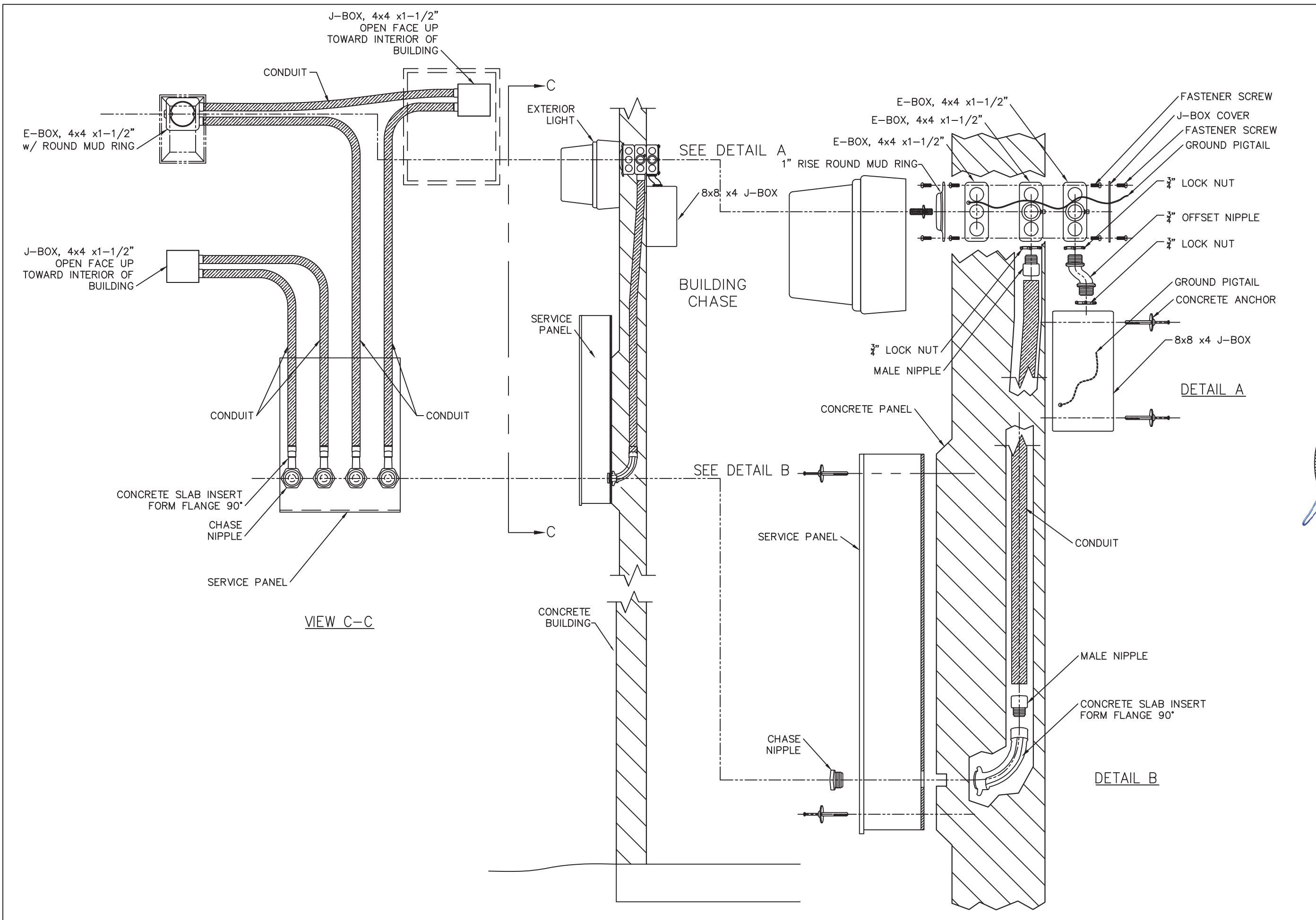
6701 E Flamingo Ave Bldg 300 Nampa, ID 83687
901 N. Highway 77 Hillsboro, TX 76645
362 Waverly Road Williamstown, WV 26187

PROJECT TITLE
DENALI
DN-389 & DN-390

NOTICE
The information contained herein is proprietary and the exclusive property of CXT Incorporated. The information may only be used by the original recipient for the purpose intended. Reproduction or distribution of this information is strictly prohibited without the prior written consent of CXT Incorporated. By allowing use of this information, CXT Incorporated grants no warranty, express or implied, including a warranty of merchantability or of fitness for a particular purpose.
CXT Incorporated

REV.	DESCRIPTION	APPROVAL	DATE
SCALE	3/16"=1'-0"	DATE	09-12-22
DRAWN	B AXNESS	FILE NO.	DN-389
CHECKED	MCT	PLOT	64

ELECTRICAL PLAN		
DWG NO.	SHEET	REV.
DN-22	22	0
	24	



September 30, 2022

LB Foster
CXT® Products

6701 E Flamingo Ave Bldg 300 Nampa, ID 83687
901 N. Highway 77 Hillsboro, TX 76645
362 Waverly Road Williamstown, WV 26187

PROJECT TITLE
DENALI
DN-389 & DN-390

NOTICE
The information contained herein is proprietary and the exclusive property of CXT Incorporated. The information may only be used by the original recipient for the purpose intended. Reproduction or distribution of this information is strictly prohibited without the prior written consent of CXT Incorporated. By allowing use of this information, CXT Incorporated grants no warranty, express or implied, including a warranty of merchantability or of fitness for a particular purpose.
CXT Incorporated

REV.	DESCRIPTION	APPROVAL	DATE
SCALE	N/A	DATE	09-12-22
DRAWN	B AXNESS	FILE NO.	DN-389
CHECKED	MCT	PLOT	N/A

ELECTRICAL PANEL ASSEMBLY DETAILS

DWG NO.	SHEET	REV.
DN-23	23	0
	24	

