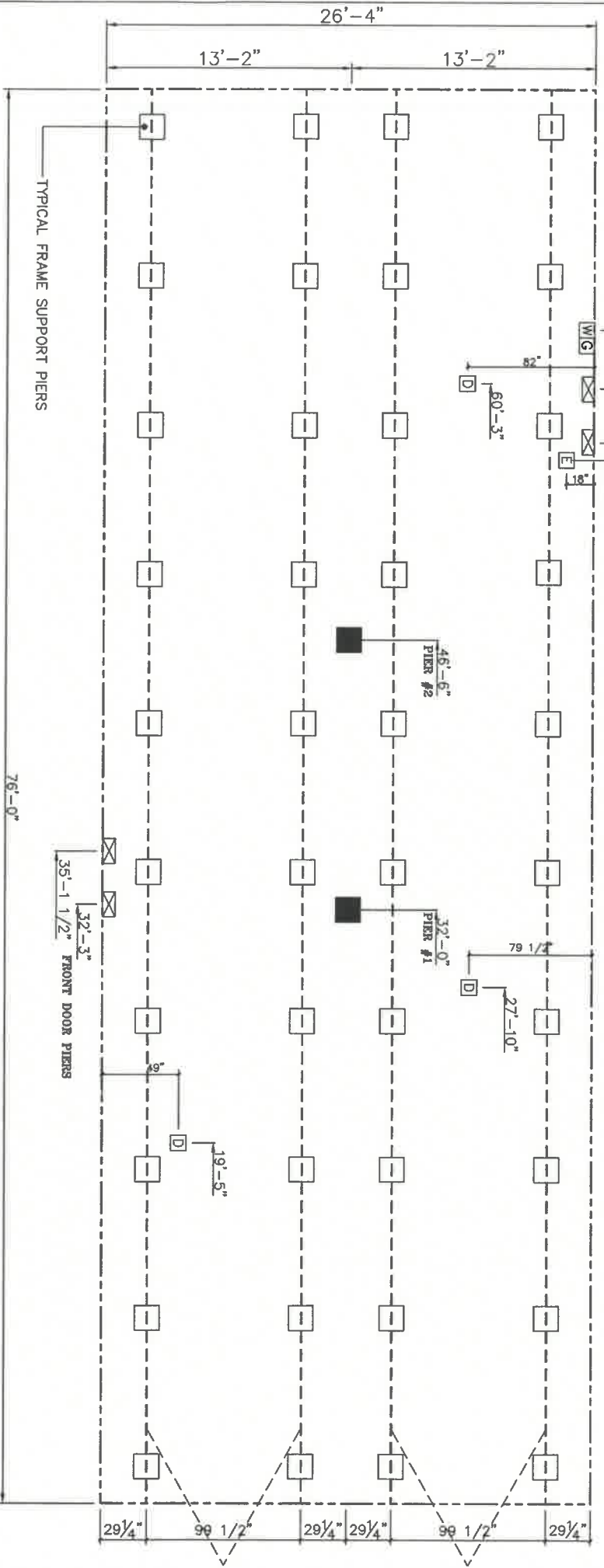


20 lb ROOF LOAD		SERIAL OPENING (FT)							
SIDEWALL OPENING PIER LOAD		REQUIRED PIER LOAD (LBS)							
28' BOX WIDTH		3	4	5	6	8	10		
		1175	1330	1485	1640	1950	2260		

\*FOR 30 lb & 40 lb ROOF LOAD REFER TO TABLES 7b & 7c IN THE INSTALLATION MANUAL.



**GENERAL NOTES:**

- PIER LOADS SHOWN ARE TO BE USED TO SIZE THE FOOTINGS BELOW THE MARRIAGEWALL FOR COLUMN SUPPORT PIERS. REFER TO TABLES 6b AND 6c IN THE INSTALLATION MANUAL FOR LOAD ON FRAME PIER FOOTINGS FOR HOMES THAT DO NOT REQUIRE PERIMETER BLOCKING. REFER TO TABLES 7b AND 7c IN THE INSTALLATION MANUAL FOR LOAD ON FRAME PIER FOOTINGS THAT REQUIRE PERIMETER BLOCKING. REFER TO TABLES 10 AND 10a TO DETERMINE FOOTING SIZE FOR ALL PIERS.
- REFER TO TABLE 9 FOR PIER CONFIGURATION AND MAXIMUM ALLOWABLE HEIGHTS. CROSS REFERENCE THE PIER HEIGHT WITH THE MAXIMUM ALLOWABLE FLOOR HEIGHT LISTED IN THE FRAME TIEDOWN CHARTS (TABLE 18, 19, AND 20).
- FLOOR WIDTH SHOWN IS FOR STANDARD PRODUCT ONLY. CONTACT THE MFG PLANT FOR SPECIFICATIONS OF OPTIONS ORDERED.
- SERVICE DROP LOCATIONS IDENTIFIED ARE APPROXIMATE.
- THE MAXIMUM SPACING FOR FRAME SUPPORT PIERS FOR 8" I-BEAMS IS 8 FEET, 10" & 12" I-BEAMS ARE 10 FEET.

**PIER LEGEND**

- = SUPPORT UNDER MAINING OPENING
- = SUPPORT AT MAINING COLUMN
- ▣ = SUPPORT UNDER MAINING WALL
- ▤ = SUPPORT UNDER MAINING ENTRY
- ▥ = PERIMETER/RECESSED ENTRY
- ▦ = PER MAIN BEAM
- ▧ = PER PERIMETER
- = TIE-DOWN SUPPORT (QTY PER TBL N, SEE DETAIL D-8 IN FOUND. PKG.)

**SERVICE DROP LEGEND**

- E = ELECTRICAL DROP
- W = WATER INLET
- D = DWV PLUMBING DROP
- G = GAS INLET

20 lb Roof Live Load				20 lb Roof Live Load			
Column Pier #	Distance from Inset Feet	Inset Inches	Pier Load (lbs)	Column Pier #	Distance from Inset Feet	Inset Inches	Pier Load (lbs)
1	32	0	3264	1	32.000	0	3272
2	46	6	3264	2	46.500	6	3272

Product Designer: Hammond

TRU

N/A SQ.FT. (W/OPT. PORCH/RECESS "CONDITIONED")

2,001 SQ.FT. (STD PLAN "CONDITIONED")

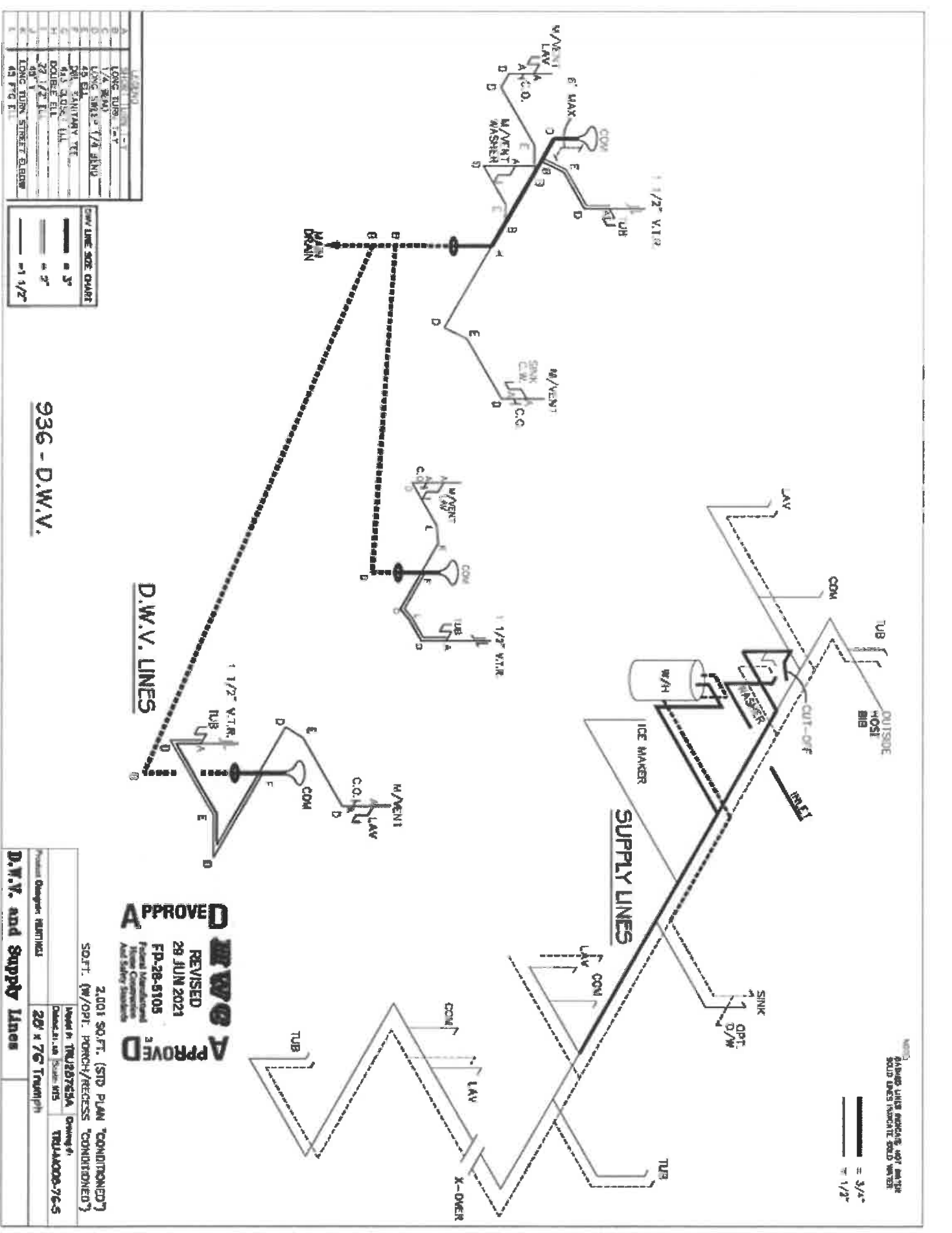
Model #: TRU28765A

Date: 1.24.12 | Scale: N.T.S.

Drawing #: TRU-M008-76-5

PIER LOADS

REV:



3/4" = 3/4" (SOLID LINE)  
 1/2" = 1/2" (DOTTED LINE)

**APPROVED**  
**REVISED**  
 29 JUN 2021  
 FP-28-5105  
 Project: Residential  
 Title: Kitchen  
 Author: [Name]

2,001 SQ. FT. (STD PLAN "CONDITIONED")  
 SD.FT. (W/OPT. PORCH/RECESS "CONDITIONED")

Project Designer: RUMICKI	Drawn by: TRUSTEVA	Checked by: [Name]
<b>D.W.V. and Supply Lines</b>	28' x 76' Truss (H)	TR11A000-76-5

A	LONG TUB, 1-1/2"
B	1/4" S.M.
C	LONG SINK, 1/4" SINK
D	48" EL.
E	36" SINK, 1/4" SINK
F	48" SINK, 1/4" SINK
G	DOUBLE EL.
H	32" 1/2" I.
I	48" I.
J	48" I.
K	LONG TUB, STREET EL. 80"
L	48" P.G. I.

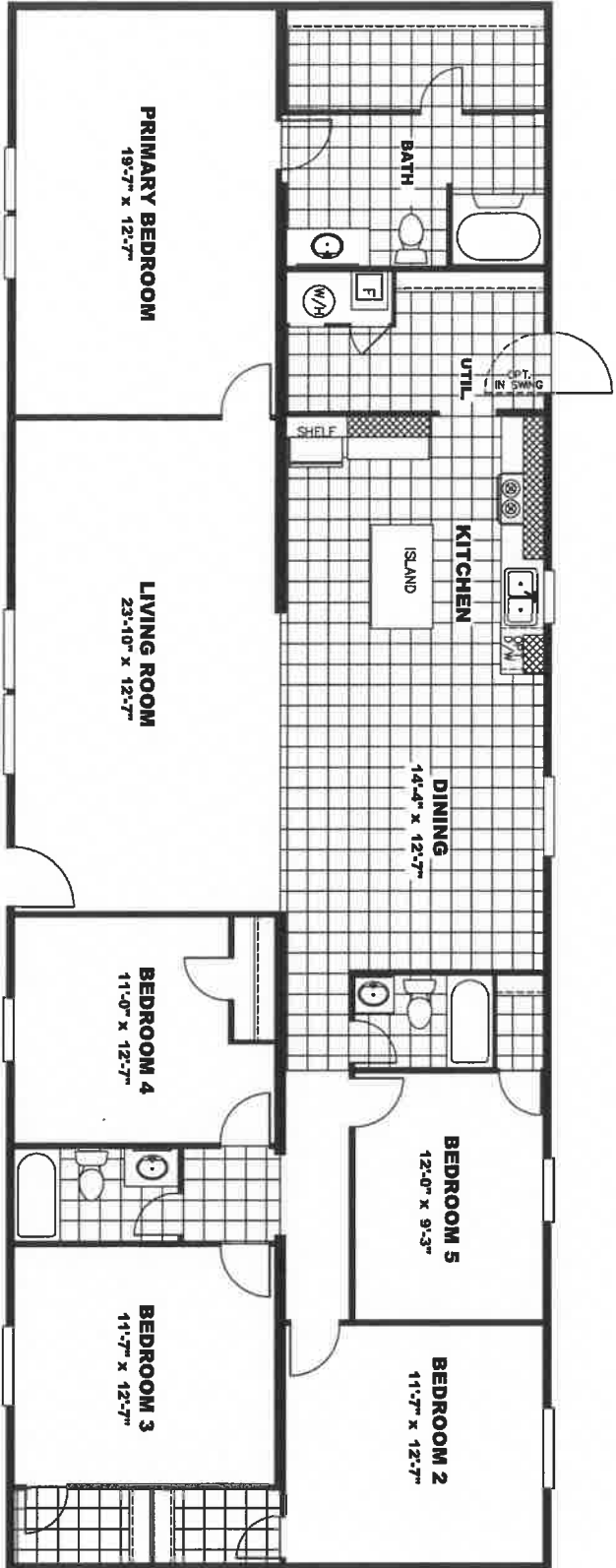
1/2"	1/2"
3/4"	3/4"
1"	1"
1 1/2"	1 1/2"

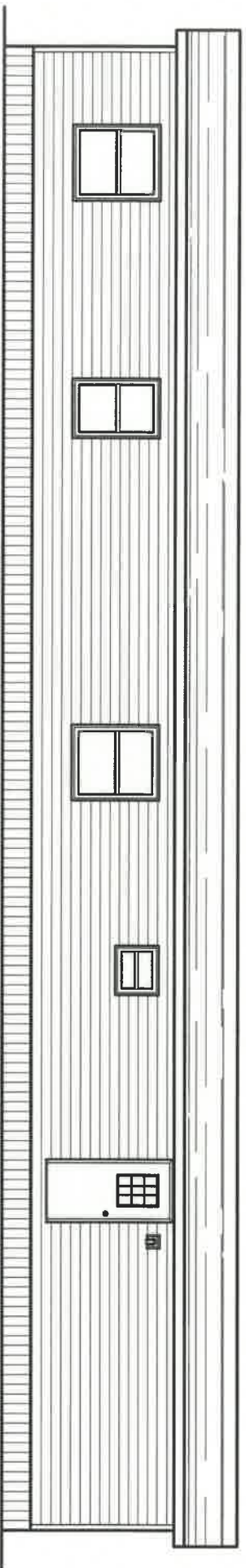
936 - D.W.V.

D.W.V. LINES

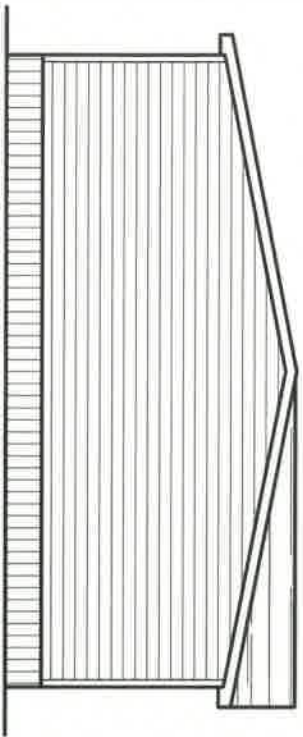
SUPPLY LINES

# Triumph

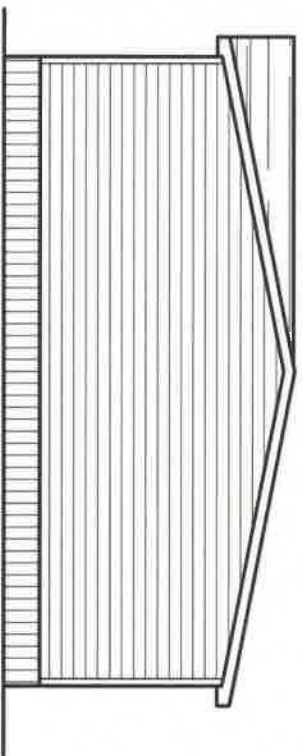




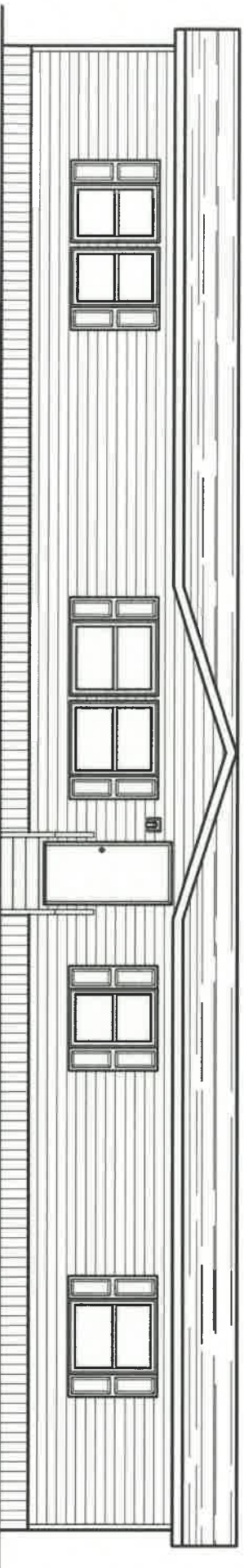
REAR ELEVATION



LEFT ELEVATION



RIGHT ELEVATION



FRONT ELEVATION

<b>TRU</b>		<b>2001 SQ.FT. (STD PLAN "CONDITIONED")</b>	
N/A SQ.FT. (W/OPT. PORCH/RECESS "CONDITIONED")		28' x 76' Triumph	
Product Designer: Hamont	Model #: TRU2876SA	Scale: N.T.S.	Drawing #: TRU-MO08-76-5
<b>Elevation</b>	REV:		