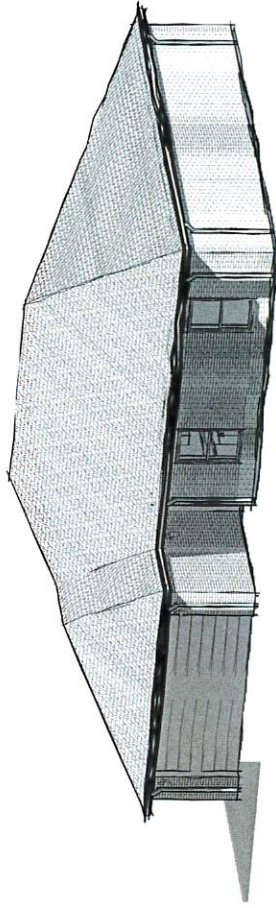


CHEROKEE NATION HOUSING DEVELOPMENT CONSTRUCTION DOCUMENTS

7/26/22
TYPE 2



CHEROKEE NATION HOUSING DEVELOPMENT - TYPE 2
COVER SHEET
ADDRESS HERE

blue river ARCHITECTS
A North Carolina Licensed Firm
1000 W. HARRIS ST., SUITE 200
RANDOLPH, NC 28134
704.382.2222

CONSTRUCTION DOCUMENTS
SHEET NO. CS
DATE: 7/26/22

COVER SHEET
DATE: 7/26/22

FOR REPRESENTATION FOR ILLUSTRATIVE PURPOSES ONLY. REFER TO DRAWINGS AND DETAILS

<p>PROJECT CONTACTS</p> <p>OWNER: CHEROKEE NATION 1000 W. HARRIS ST., SUITE 200 RANDOLPH, NC 28134 704.382.2222</p> <p>CONTRACTOR:</p>	<p>ARCHITECT: BLUE RIVER ARCHITECTS, LLC 1000 W. HARRIS ST., SUITE 200 RANDOLPH, NC 28134 704.382.2222</p>
<p>CONSULTANT CONTACTS</p> <p>GEOTECHNICAL CONSULTANT: GEO CONSULTANTS 1000 W. HARRIS ST., SUITE 200 RANDOLPH, NC 28134 704.382.2222</p> <p>ENVIRONMENTAL CONSULTANT: ENVIRONMENTAL CONSULTANTS 1000 W. HARRIS ST., SUITE 200 RANDOLPH, NC 28134 704.382.2222</p>	<p>REGIONAL CONSULTANT: REGIONAL CONSULTANTS 1000 W. HARRIS ST., SUITE 200 RANDOLPH, NC 28134 704.382.2222</p>

PROJECT LOCATION

ADDRESS HERE

SHEET INDEX

<p>GENERAL</p> <p>CS COVER SHEET</p> <p>01 PROJECT PROPOSITION</p> <p>ARCHITECTURAL</p> <p>02 EXTERIOR ELEVATIONS</p> <p>03 INTERIOR ELEVATIONS AND ROOF PLAN</p> <p>04 FLOOR FINISHES AND SCHEDULES</p> <p>05 WALL FINISHES AND SCHEDULES</p>	<p>ELECTRICAL</p> <p>06 ELECTRICAL PLAN</p>	<p>MECHANICAL</p> <p>07 MECHANICAL PLAN</p> <p>08 MECHANICAL PLAN AND SCHEDULES</p>	<p>PLUMBING</p> <p>09 PLUMBING PLAN</p> <p>10 PLUMBING PLAN</p>
--	--	--	--

FUNCTIONAL

11 FLOOR FINISHES AND SCHEDULES (EXTERIOR)

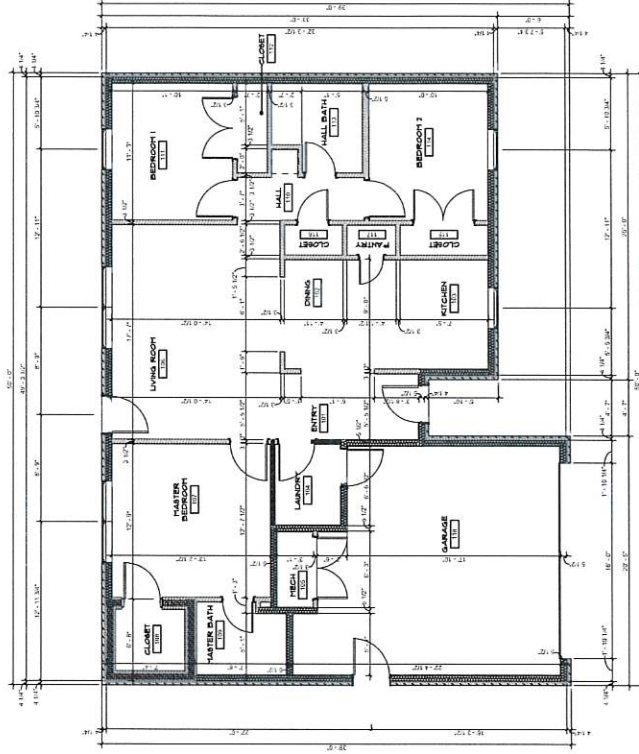
12 FLOOR FINISHES AND SCHEDULES (INTERIOR)

13 FLOOR FINISHES AND SCHEDULES (ROOF)

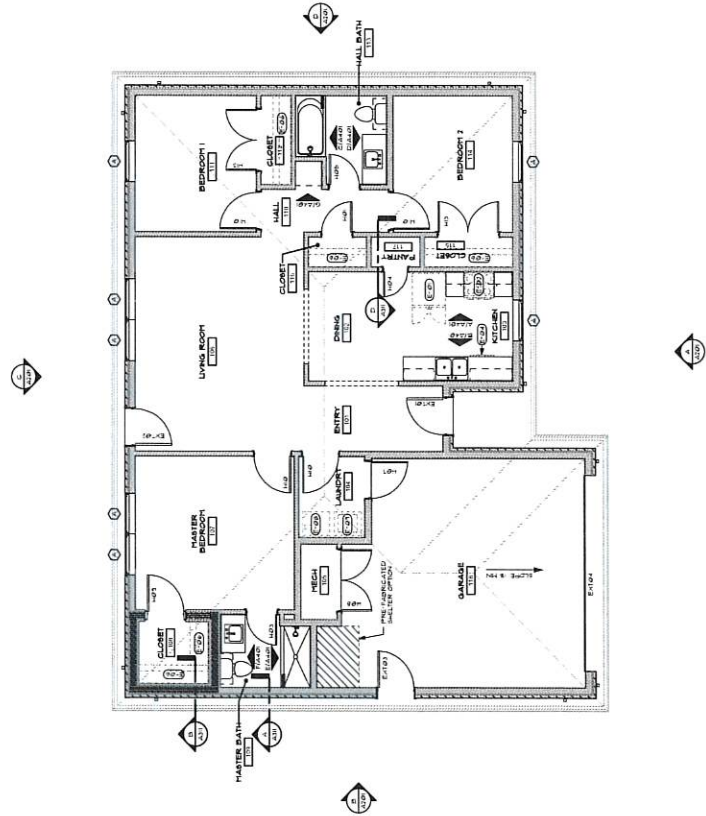
14 FLOOR FINISHES AND SCHEDULES (WALLS)

15 FLOOR FINISHES AND SCHEDULES (CEILING)

16 FLOOR FINISHES AND SCHEDULES (DETAILS)



A FIRST FLOOR DIMENSION PLAN
1/8" = 1'-0"



B FIRST FLOOR REFERENCE PLAN
1/8" = 1'-0"

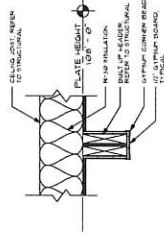
REFLECTED CEILING PLAN LEGEND

□	1/4" SQUARE JOINT	<input checked="" type="checkbox"/>	APPLY: DRYWALL
▬	WALL	<input checked="" type="checkbox"/>	RETURN
•	RECESSED CAN LIGHT	<input checked="" type="checkbox"/>	EXHAUST FAN
▨	PLATE	○	SHOWER DIRECTION
○	PLUMBING JOINT	○	CEILING HOLE
○	PLUMBING JOINT	○	CEILING HOLE
○	CEILING HOLE	○	ALUMINUM PRIMED SURFACE
○	CEILING HOLE	○	FULLING
○	CEILING HOLE	○	FULLING
○	CEILING HOLE	○	FULLING
○	CEILING HOLE	○	FULLING
○	CEILING HOLE	○	FULLING
○	CEILING HOLE	○	FULLING

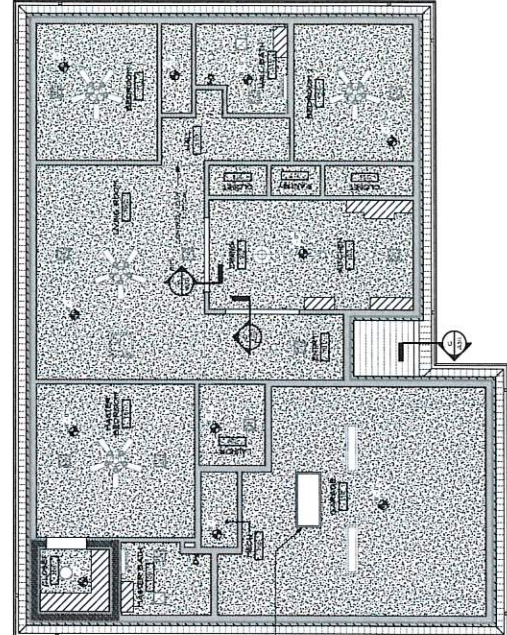
NOTE: REFER TO MECHANICAL, ELECTRICAL AND MECHANICAL DRAWINGS FOR
 MECHANICAL, ELECTRICAL AND MECHANICAL DRAWINGS FOR

ROOF PLAN GENERAL NOTES

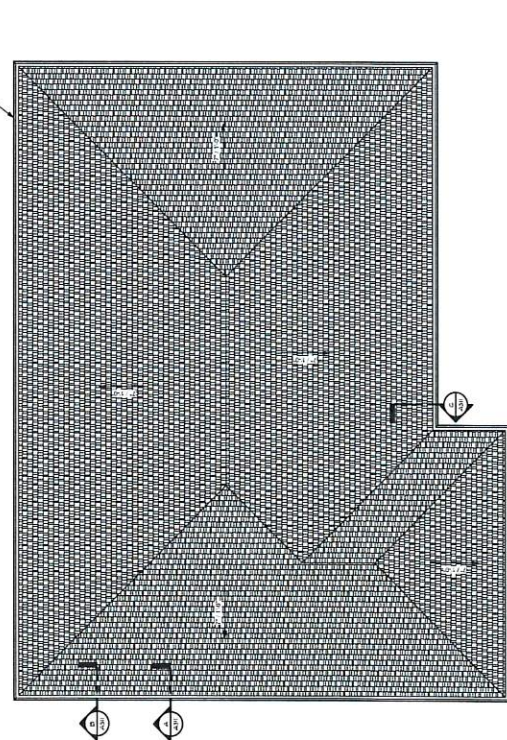
1. ALL ROOF PENETRATIONS, MECHANICAL AND ELECTRICAL PENETRATIONS SHALL BE IN ACCORDANCE WITH MANUFACTURER'S SPECIFICATIONS AND SHALL BE PROTECTED BY A FLASHING SYSTEM.
2. INSTALL ROOFING IN ACCORDANCE WITH MANUFACTURER'S SPECIFICATIONS.
3. INSTALL DOWNS AND DRAINAGE IN ACCORDANCE WITH MANUFACTURER'S SPECIFICATIONS.
4. PROVIDE ROOF FLASHING AT ALL ROOF EDGES.
5. FIVE AND FOUR PENETRATIONS PROVIDE PRE-INSULATED PIPE BLENDS ONLY. FIVE AND FOUR PENETRATIONS SHALL BE INSTALLED IN ACCORDANCE WITH MANUFACTURER'S SPECIFICATIONS.



C CEILING DETAIL
 1/2" = 1'-0"



A REFLECTED CEILING PLAN
 1/2" = 1'-0"



B ROOF PLAN
 1/2" = 1'-0"



EXTERIOR ELEVATION GENERAL NOTES

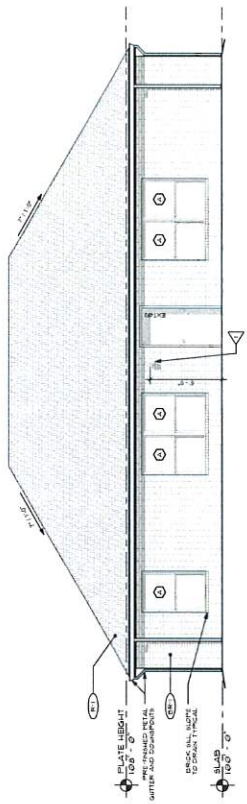
1. REFER TO SHEET A200 FOR WINDOW TYPES
2. REFER TO SHEET A200 FOR DOOR SCHEDULE
3. REFER TO SHEET A200 FOR DOOR SCHEDULE
4. REFER TO SHEET A200 FOR DOOR SCHEDULE
5. REFER TO SHEET A200 FOR DOOR SCHEDULE
6. REFER TO SHEET A200 FOR DOOR SCHEDULE
7. REFER TO SHEET A200 FOR DOOR SCHEDULE
8. REFER TO SHEET A200 FOR DOOR SCHEDULE
9. REFER TO SHEET A200 FOR DOOR SCHEDULE
10. REFER TO SHEET A200 FOR DOOR SCHEDULE
11. REFER TO SHEET A200 FOR DOOR SCHEDULE
12. REFER TO SHEET A200 FOR DOOR SCHEDULE
13. REFER TO SHEET A200 FOR DOOR SCHEDULE
14. REFER TO SHEET A200 FOR DOOR SCHEDULE
15. REFER TO SHEET A200 FOR DOOR SCHEDULE
16. REFER TO SHEET A200 FOR DOOR SCHEDULE
17. REFER TO SHEET A200 FOR DOOR SCHEDULE
18. REFER TO SHEET A200 FOR DOOR SCHEDULE
19. REFER TO SHEET A200 FOR DOOR SCHEDULE
20. REFER TO SHEET A200 FOR DOOR SCHEDULE

EXTERIOR MATERIAL LEGEND

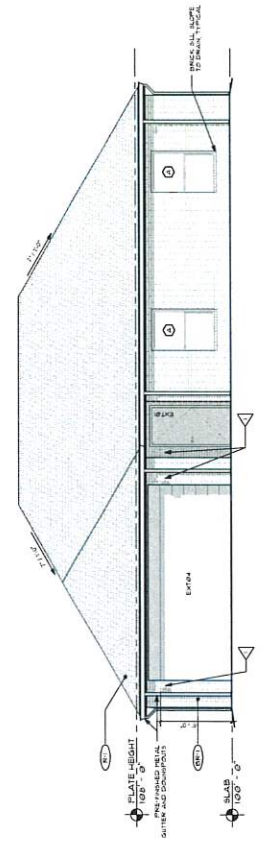
BRICK, COMMON BRICK
 (Symbol) BRICK, WHITE GLAZED SANITATION ENGL. - 4 1/2" x 9 1/2" x 3 1/2"
 ASPHALT FIBERGLASS ROOFING
 (Symbol) ASPHALT FIBERGLASS, ATLAS FIBERGLASS - 1/2" x 12" x 48"
 VINYL SIDING
 (Symbol) VINYL SIDING, UNPAINTED - WHITE
 METAL ROOFING
 (Symbol) METAL PANEL, UNPAINTED - WHITE
 (Symbol) METAL GUTTER AND DOWNSPOUT, UNPAINTED - WHITE

SYMBOLS

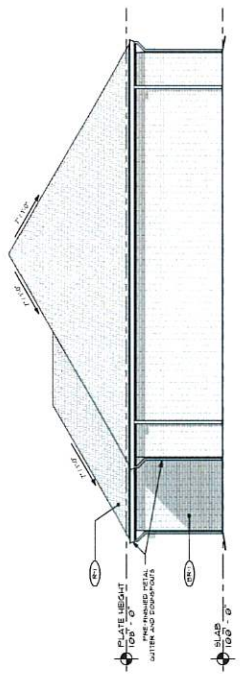
(Symbol) WINDOW TYPE
 (Symbol) LIGHTING REFER TO ELECTRICAL
 (Symbol) LOWER REFER TO MECHANICAL



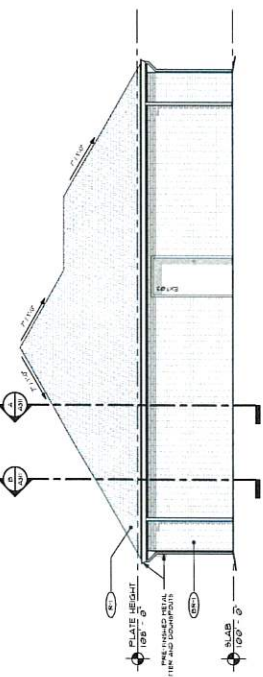
C EXTERIOR ELEVATION
14' x 14'0"



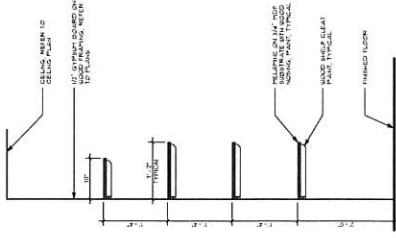
A EXTERIOR ELEVATION
14' x 14'0"



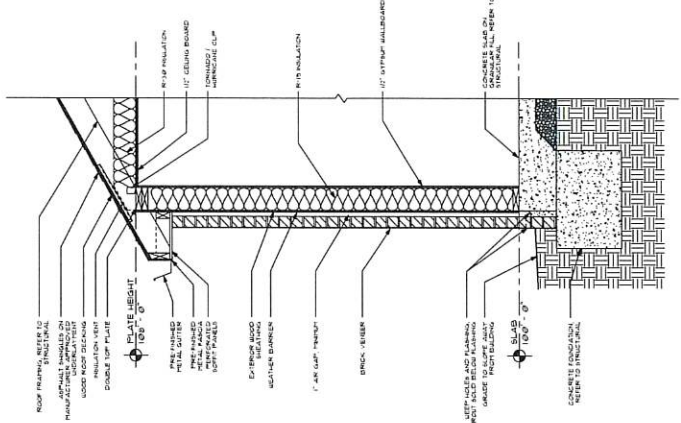
D EXTERIOR ELEVATION
14' x 14'0"



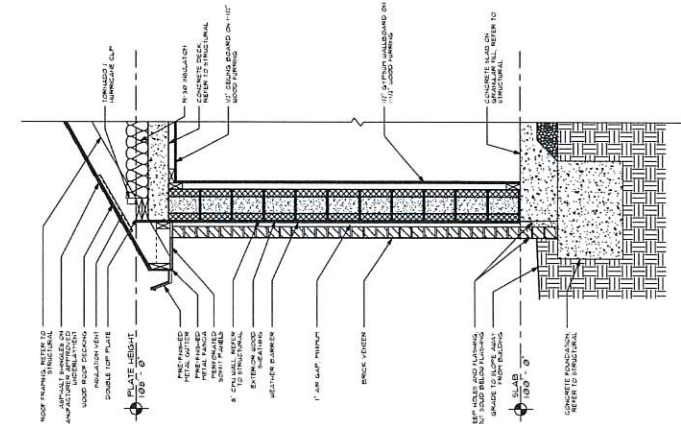
B EXTERIOR ELEVATION
14' x 14'0"



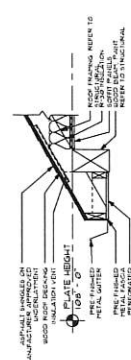
D CASEWORK SECTION
1/4" = 1'-0"



A WALL SECTION
1/4" = 1'-0"



B WALL SECTION
1/4" = 1'-0"



C WALL SECTION
1/4" = 1'-0"



GENERAL NOTES AND STRUCTURAL SPECIAL INSPECTIONS



SPECIAL INSPECTION REQUIREMENTS (2015)

Table with 5 columns: ITEM NO., DESCRIPTION, IBC 2015 REQUIRED SPECIAL INSPECTIONS, CONTRACTOR'S RESPONSE, ENGINEER'S RESPONSE. Includes items 1 through 16.

Table titled 'ACI 308.4R-10 SPECIAL INSPECTION REQUIREMENTS' with columns for ITEM NO., DESCRIPTION, CONTRACTOR'S RESPONSE, ENGINEER'S RESPONSE. Includes items 1 through 37.

ABBREVIATIONS, GENERAL NOTES, and ABBREVIATIONS sections. Includes lists of abbreviations for general notes and structural special inspections.

GENERAL NOTES

- 1. GENERAL NOTES: ALL NOTES ARE TO BE READ AND UNDERSTOOD BY THE CONTRACTOR. ANY DISCREPANCIES SHALL BE REPORTED IMMEDIATELY TO THE ENGINEER.

DESIGN PARAMETERS table listing items 1 through 10: COLUMN CROSS SECTION, COLUMN TYPE, COLUMN SIZE, etc.

TABLES showing column cross-sections and reinforcement details for various column types.

GENERAL NOTES

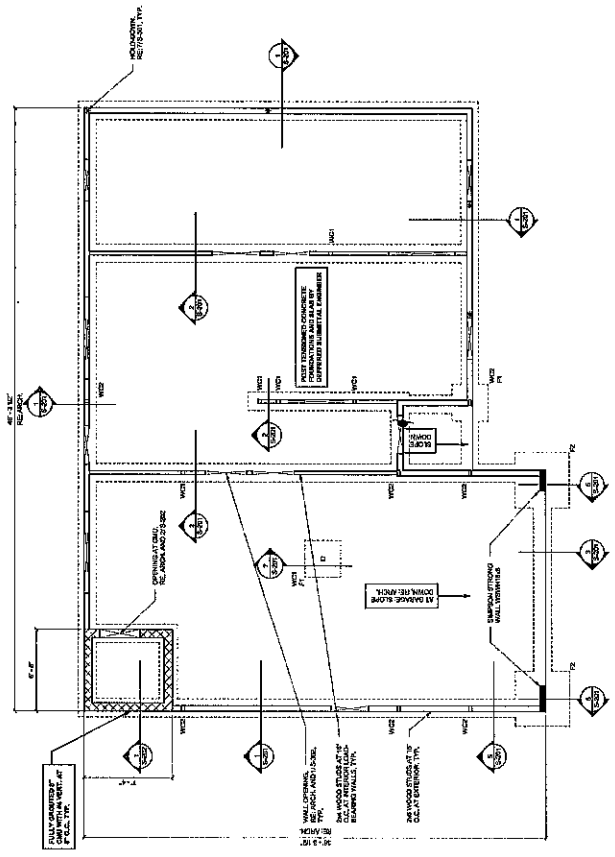
- 1. STRUCTURE: THE CONTRACTOR SHALL BE RESPONSIBLE FOR THE DESIGN AND CONSTRUCTION OF ALL STRUCTURAL ELEMENTS.



- FOUNDATION NOTES:**
1. TOP OF SLAB ELEVATIONS ARE INDICATED ON PLANS.
 2. CONCRETE SHALL BE CAST IN PLACE AND SHALL BE FINISHED TO THE FINISH OF THE SLAB.
 3. ALL FOUNDATION WALLS SHALL BE CAST IN PLACE AND SHALL BE FINISHED TO THE FINISH OF THE WALL.
 4. ALL FOUNDATION WALLS SHALL BE FINISHED TO THE FINISH OF THE WALL.
 5. ALL FOUNDATION WALLS SHALL BE FINISHED TO THE FINISH OF THE WALL.
 6. ALL FOUNDATION WALLS SHALL BE FINISHED TO THE FINISH OF THE WALL.

ALL DIMENSIONS UNLESS OTHERWISE NOTED

FOR CONSTRUCTION, REFER TO ALL OTHER DRAWINGS FOR DIMENSIONS AND FINISHES. DIMENSIONS TO FACE UNLESS OTHERWISE NOTED.

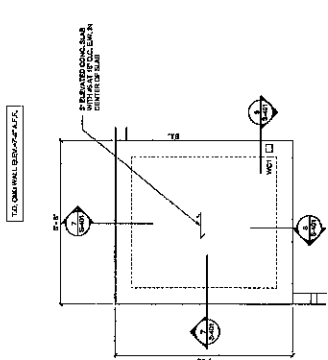


1 FOUNDATION PLAN - TYPE 2

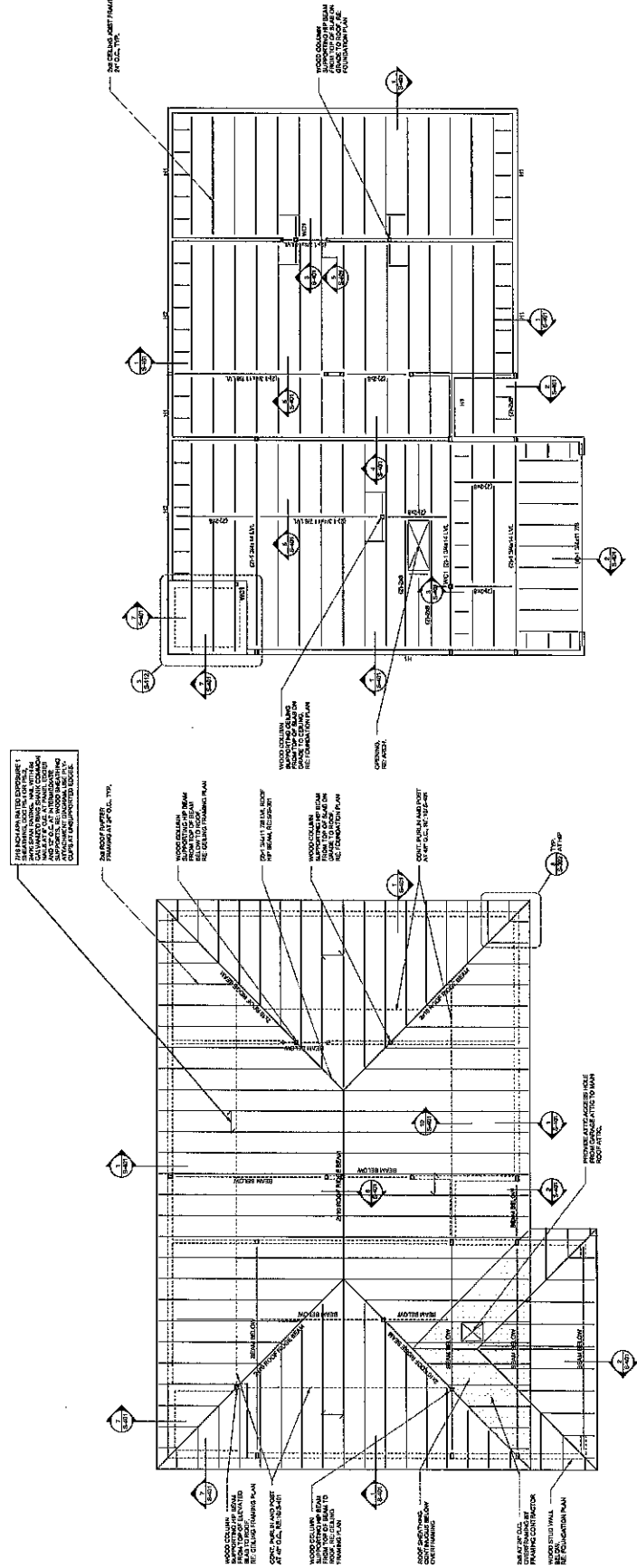


- REVISIONS:**
1. REVISIONS INCORPORATED AND DRAWINGS FOR ISSUE AND LOCATION OF REVISIONS ARE SHOWN ON TYPICAL SHEET INTERVALS.
 2. REVISIONS ARE SHOWN ON TYPICAL SHEET INTERVALS.
 3. REVISIONS ARE SHOWN ON TYPICAL SHEET INTERVALS.
 4. REVISIONS ARE SHOWN ON TYPICAL SHEET INTERVALS.

TO WALL CONSTRUCTION PLAN.
REFER TO JAMB FOR ROOF BLANK



3 PARTIAL PLAN

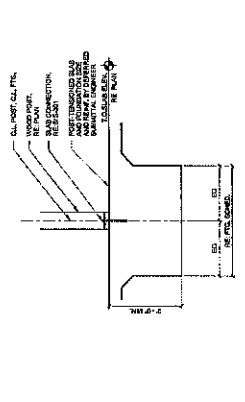


1 CEILING FRAMING PLAN - TYPE 2

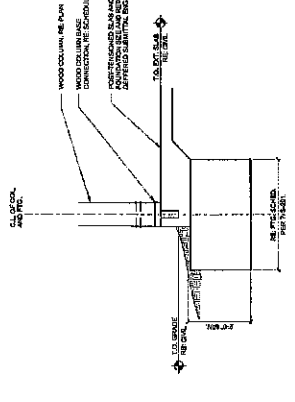
2 ROOF FRAMING PLAN - TYPE 2

FOOTING SCHEDULE

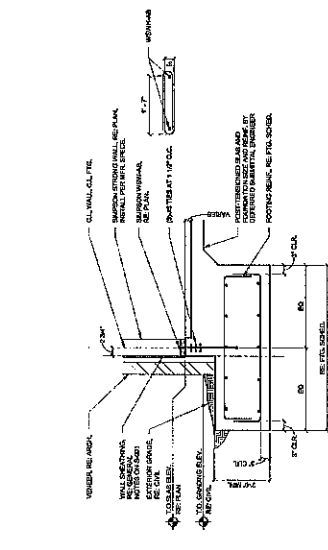
MARK	LENGTH	WIDTH	THICKNESS	REINFORCEMENT SCHEDULE	NOTES
1	1'-0"	1'-0"	1'-0"	4#4 @ 12" O.C.	TYPE 1
2	1'-0"	1'-0"	1'-0"	4#4 @ 12" O.C.	TYPE 2
3	1'-0"	1'-0"	1'-0"	4#4 @ 12" O.C.	TYPE 3
4	1'-0"	1'-0"	1'-0"	4#4 @ 12" O.C.	TYPE 4



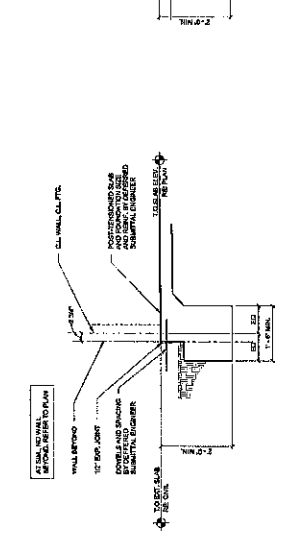
7 FOUNDATION DETAIL



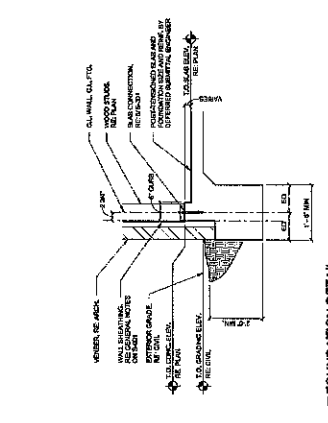
4 FOUNDATION DETAIL



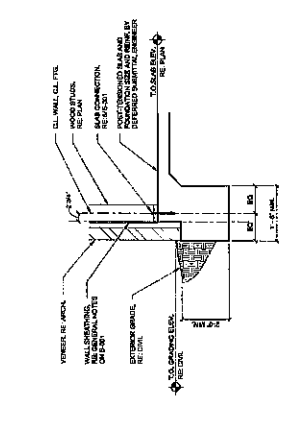
6 FOUNDATION DETAIL



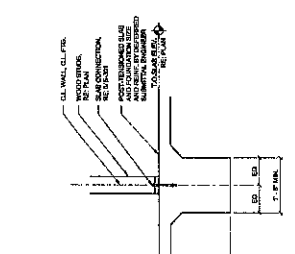
3 FOUNDATION DETAIL



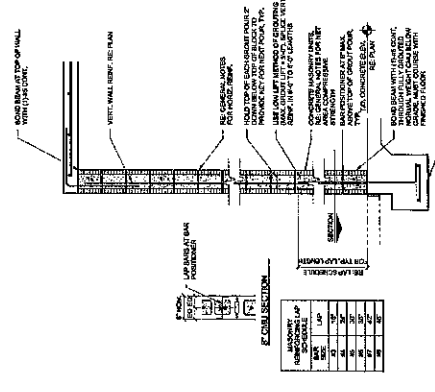
5 FOUNDATION DETAIL



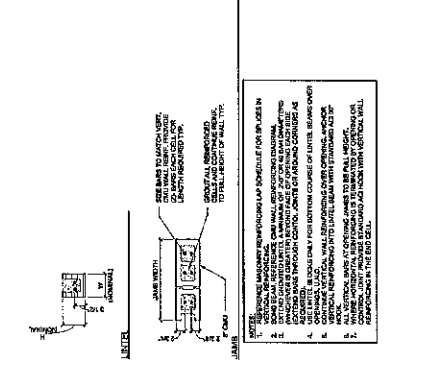
1 FOUNDATION DETAIL



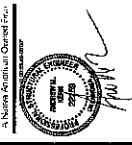
2 FOUNDATION DETAIL



1 CMU WALL REINFORCING DIAGRAM



2 TYPICAL MASONRY WALL OPENING DIAGRAM AND SCHEDULE

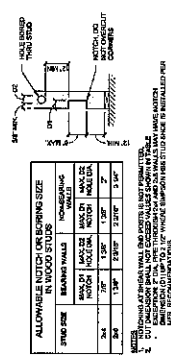


41605 WILSON AVENUE
SUITE 200
VAN NUYS, CA 91411
TEL: 818.706.0831
WWW.BLUE-ARCHITECTS.COM

**CHEROKEE NATION HOUSING
DEVELOPMENT - TYPES 1 TO 4**

3/10/2019
18% CONTRACTION
DOCUMENTS
CONTRACT DATE
NO. 1803292788

**TYPICAL WOOD
DETAILS**



**ALLOWABLE NOTCH OR BORING SIZE
IN WOOD STUDS**

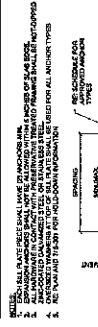
FASTENER	SPACING	MAX. NOTCH OR BORING SIZE
#6 DOWEL	12"	1/2" DIA.
#6 DOWEL	16"	3/4" DIA.
#6 DOWEL	24"	1" DIA.
#6 DOWEL	32"	1 1/4" DIA.

1. MAXIMUM SPACING SHALL BE 48" O.C. UNLESS OTHERWISE SHOWN.
2. ALL FASTENERS SHALL BE INSTALLED TO FULL PENETRATION UNLESS OTHERWISE SHOWN.
3. ALL FASTENERS SHALL BE INSTALLED TO FULL PENETRATION UNLESS OTHERWISE SHOWN.
4. ALL FASTENERS SHALL BE INSTALLED TO FULL PENETRATION UNLESS OTHERWISE SHOWN.
5. ALL FASTENERS SHALL BE INSTALLED TO FULL PENETRATION UNLESS OTHERWISE SHOWN.

10 HOLES AND NOTCHES IN WOOD STUDS

SILL PLATE ANCHOR SCHEDULE

ANCHOR	EMBEDMENT	LOCATION AND SPACING	SPACING
1"	16"	SPACING	16"
1"	16"	SPACING	16"
1"	16"	SPACING	16"
1"	16"	SPACING	16"
1"	16"	SPACING	16"
1"	16"	SPACING	16"



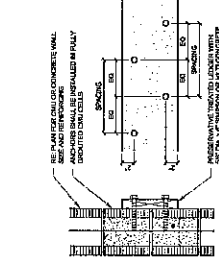
6 SILL PLATE ANCHOR SCHEDULE

TYPICAL NAILING SCHEDULE

DESCRIPTION	NAIL SIZE
WOOD JOIST/RAFTER TO TOP PLATE	16D COMMON
WOOD JOIST/RAFTER TO SILL PLATE	16D COMMON
WOOD JOIST/RAFTER TO STUDS	16D COMMON
WOOD JOIST/RAFTER TO TOP PLATE	16D COMMON
WOOD JOIST/RAFTER TO SILL PLATE	16D COMMON
WOOD JOIST/RAFTER TO STUDS	16D COMMON
WOOD JOIST/RAFTER TO TOP PLATE	16D COMMON
WOOD JOIST/RAFTER TO SILL PLATE	16D COMMON
WOOD JOIST/RAFTER TO STUDS	16D COMMON

1. ALL NAILS SHALL BE INSTALLED TO FULL PENETRATION UNLESS OTHERWISE SHOWN.
2. ALL NAILS SHALL BE INSTALLED TO FULL PENETRATION UNLESS OTHERWISE SHOWN.
3. ALL NAILS SHALL BE INSTALLED TO FULL PENETRATION UNLESS OTHERWISE SHOWN.
4. ALL NAILS SHALL BE INSTALLED TO FULL PENETRATION UNLESS OTHERWISE SHOWN.
5. ALL NAILS SHALL BE INSTALLED TO FULL PENETRATION UNLESS OTHERWISE SHOWN.

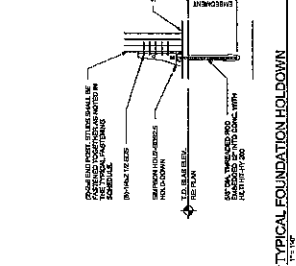
2 TYPICAL FASTENING SCHEDULE



TYPICAL LEDGER ATTACHMENT

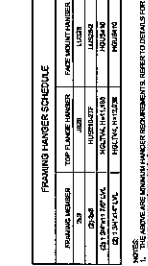
LEDGER	FASTENER	SPACING
WOOD JOIST	16D COMMON	16"
WOOD JOIST	16D COMMON	16"
WOOD JOIST	16D COMMON	16"
WOOD JOIST	16D COMMON	16"
WOOD JOIST	16D COMMON	16"
WOOD JOIST	16D COMMON	16"

11 TYPICAL WOOD LEDGER DETAIL



WOOD COLUMN SCHEDULE

MARK	DESCRIPTION	TYPE	NOTE
1	WOOD COLUMN	WOOD COLUMN	
2	WOOD COLUMN	WOOD COLUMN	
3	WOOD COLUMN	WOOD COLUMN	
4	WOOD COLUMN	WOOD COLUMN	

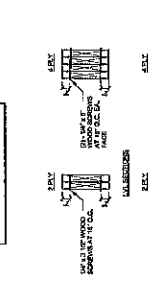
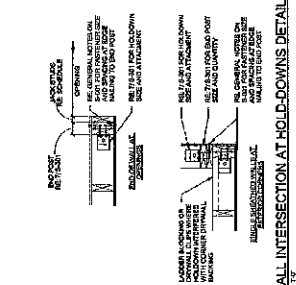


1. ALL NAILS SHALL BE INSTALLED TO FULL PENETRATION UNLESS OTHERWISE SHOWN.
2. ALL NAILS SHALL BE INSTALLED TO FULL PENETRATION UNLESS OTHERWISE SHOWN.
3. ALL NAILS SHALL BE INSTALLED TO FULL PENETRATION UNLESS OTHERWISE SHOWN.
4. ALL NAILS SHALL BE INSTALLED TO FULL PENETRATION UNLESS OTHERWISE SHOWN.
5. ALL NAILS SHALL BE INSTALLED TO FULL PENETRATION UNLESS OTHERWISE SHOWN.

3 FRAMING HANGER SCHEDULE



8 TYPICAL WALL INTERSECTION DETAIL



1. ALL NAILS SHALL BE INSTALLED TO FULL PENETRATION UNLESS OTHERWISE SHOWN.
2. ALL NAILS SHALL BE INSTALLED TO FULL PENETRATION UNLESS OTHERWISE SHOWN.
3. ALL NAILS SHALL BE INSTALLED TO FULL PENETRATION UNLESS OTHERWISE SHOWN.
4. ALL NAILS SHALL BE INSTALLED TO FULL PENETRATION UNLESS OTHERWISE SHOWN.
5. ALL NAILS SHALL BE INSTALLED TO FULL PENETRATION UNLESS OTHERWISE SHOWN.

5 BUILT-UP BEAM SCHEDULE AND DETAIL

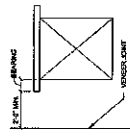
4 BUILT-UP COLUMN SCHEDULE AND DETAIL

7 TYPICAL FOUNDATION HOLDOWN

2 TYPICAL FASTENING SCHEDULE

1 TYPICAL WOOD LEDGER DETAIL

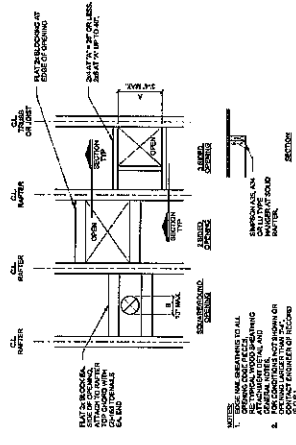
6 SILL PLATE ANCHOR SCHEDULE



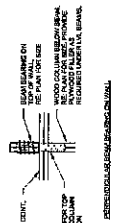
MASONRY VENEER LOOSE LINTEL ANGLE SCHEDULE

CLEARANCE	ANGLE SIZE	BRACING
UP TO 8"	1/2" x 1/2"	2"
8" TO 12"	3/4" x 3/4"	3"
12" TO 16"	1" x 1"	4"
16" TO 20"	1 1/4" x 1 1/4"	5"
20" TO 24"	1 1/2" x 1 1/2"	6"
24" TO 28"	1 3/4" x 1 3/4"	7"
28" TO 32"	2" x 2"	8"
32" TO 36"	2 1/4" x 2 1/4"	9"
36" TO 40"	2 1/2" x 2 1/2"	10"
40" TO 44"	2 3/4" x 2 3/4"	11"
44" TO 48"	3" x 3"	12"

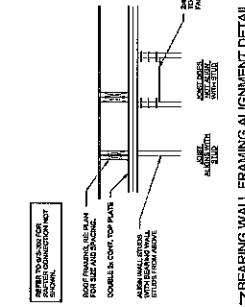
12 MASONRY LOOSE LINTEL ANGLE SCHEDULE



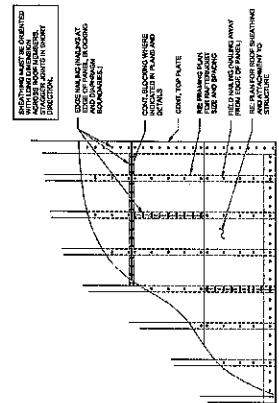
9 SMALL OPENING IN WOOD SHEATHING



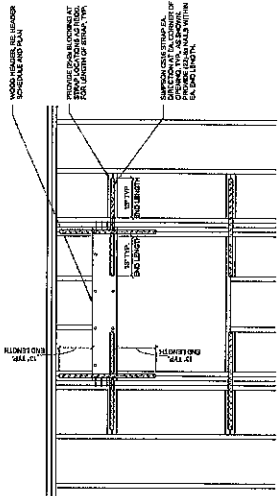
6 TYPICAL ROOF RAFTER TIE DOWN DETAIL



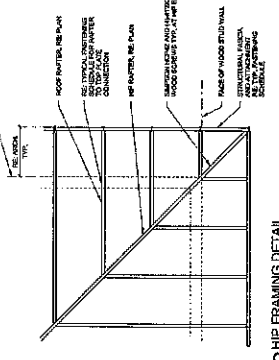
7 BEARING WALL FRAMING ALIGNMENT DETAIL



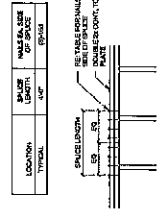
3 TYPICAL WOOD SHEATHING ATTACHMENT DIAGRAM



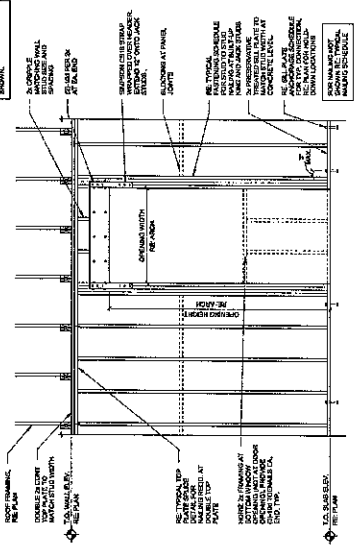
11 FORCE TRANSFER AROUND OPENINGS



8 HIP FRAMING DETAIL



4 TYPICAL TOP PLATE SPLICE



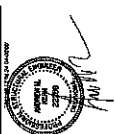
1 TYPICAL WALL OPENING DETAIL

OPENING SCHEDULE

MARK	NUMBER	LOCATION	TYPE	SIZE	FINISH	NOTES
1	101	101	DOOR	36" x 80"	WOOD	
2	102	102	DOOR	36" x 80"	WOOD	
3	103	103	DOOR	36" x 80"	WOOD	
4	104	104	DOOR	36" x 80"	WOOD	
5	105	105	DOOR	36" x 80"	WOOD	
6	106	106	DOOR	36" x 80"	WOOD	
7	107	107	DOOR	36" x 80"	WOOD	
8	108	108	DOOR	36" x 80"	WOOD	
9	109	109	DOOR	36" x 80"	WOOD	
10	110	110	DOOR	36" x 80"	WOOD	

NOTE: ALL OPENINGS SHALL BE FINISHED TO MATCH THE TYPICAL FINISH. ALL OPENINGS SHALL BE FINISHED TO MATCH THE TYPICAL FINISH.

2 OPENING SCHEDULE



WOLFGANG
CONSULTING

3300 N. WASHINGTON ST., SUITE 200
DENVER, CO 80217
PHONE: (303) 733-0000
WWW.BLUE-ARCHITECTS.COM

CHEROKEE NATION HOUSING
DEVELOPMENT - TYPES 1 TO 4

blue river
ARCHITECTS

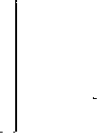
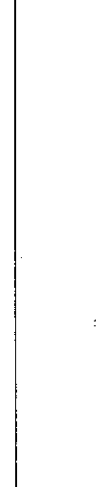
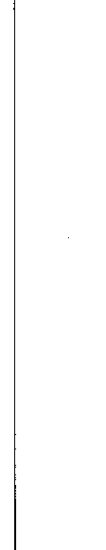
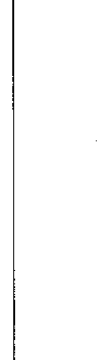
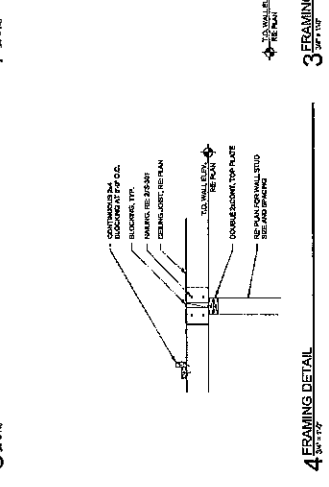
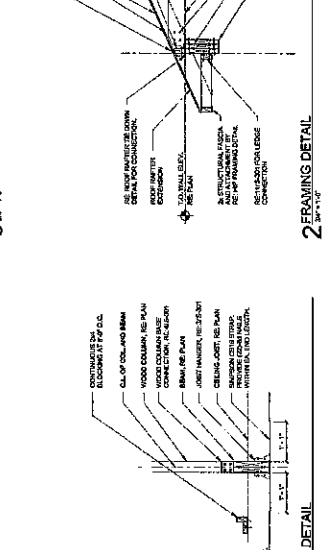
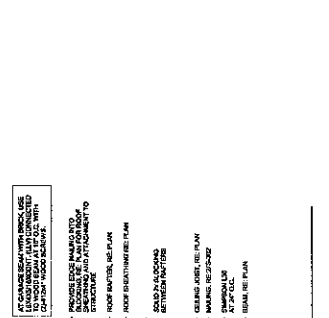
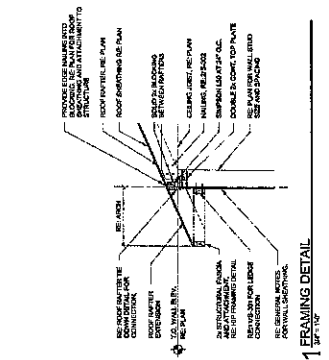
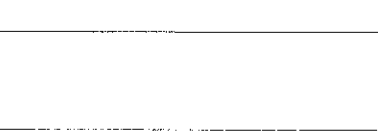
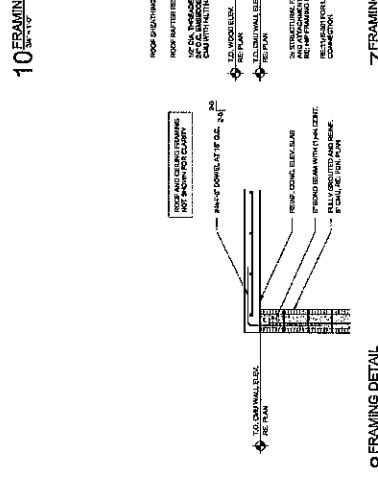
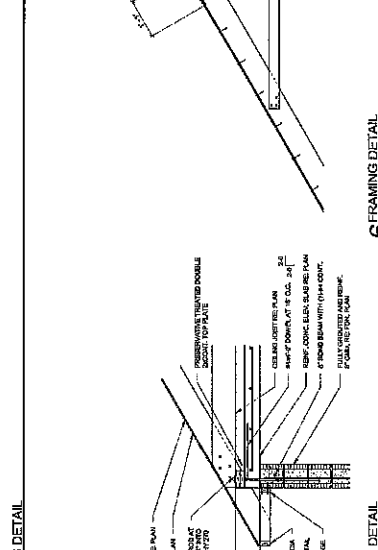
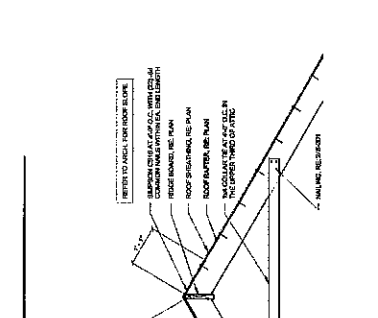
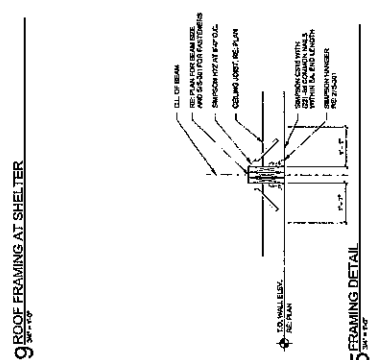
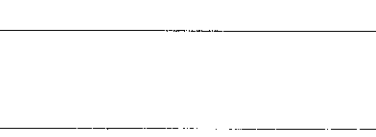
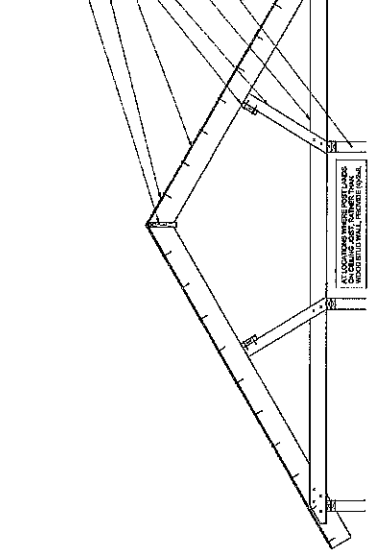
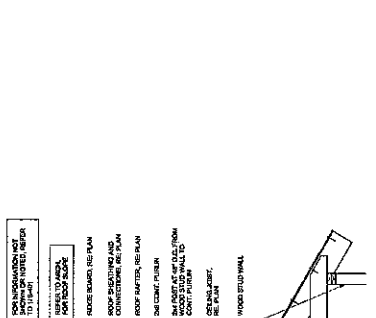
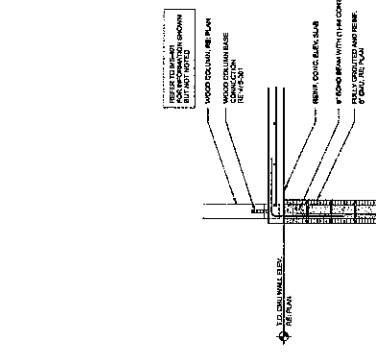
PROJECT NUMBER: S-401
DATE: 12/15/17

10% CONSTRUCTION
DOCUMENTS

DATE: 12/15/17
DRAWN: JMM
CHECKED: JMM

S-401

FRAMING DETAILS





CHEROKEE NATION HOUSING DEVELOPMENT - TYPE 2

M001
HVAC NOTES



MPW ENGINEERING, LLC
110 W. TULLOCH AVENUE, SUITE 600
TULLOCH, NC 27588
TEL: 919.770.1000
FAX: 919.770.1001
WWW.MPWENGINEERING.COM

MPW
HVAC NOTES

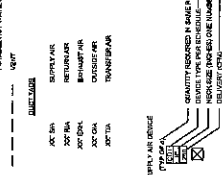
M001
HVAC NOTES

GENERAL NOTES

- THE CONTRACTOR SHALL OBTAIN ALL NECESSARY PERMITS AND APPROVALS FROM THE LOCAL, STATE AND FEDERAL AGENCIES FOR THE INSTALLATION OF ALL SYSTEMS AND EQUIPMENT. THE CONTRACTOR SHALL BE RESPONSIBLE FOR THE OBTAINING OF ALL NECESSARY PERMITS AND APPROVALS FROM THE LOCAL, STATE AND FEDERAL AGENCIES FOR THE INSTALLATION OF ALL SYSTEMS AND EQUIPMENT. THE CONTRACTOR SHALL BE RESPONSIBLE FOR THE OBTAINING OF ALL NECESSARY PERMITS AND APPROVALS FROM THE LOCAL, STATE AND FEDERAL AGENCIES FOR THE INSTALLATION OF ALL SYSTEMS AND EQUIPMENT.
- THE CONTRACTOR SHALL BE RESPONSIBLE FOR THE OBTAINING OF ALL NECESSARY PERMITS AND APPROVALS FROM THE LOCAL, STATE AND FEDERAL AGENCIES FOR THE INSTALLATION OF ALL SYSTEMS AND EQUIPMENT. THE CONTRACTOR SHALL BE RESPONSIBLE FOR THE OBTAINING OF ALL NECESSARY PERMITS AND APPROVALS FROM THE LOCAL, STATE AND FEDERAL AGENCIES FOR THE INSTALLATION OF ALL SYSTEMS AND EQUIPMENT.
- THE CONTRACTOR SHALL BE RESPONSIBLE FOR THE OBTAINING OF ALL NECESSARY PERMITS AND APPROVALS FROM THE LOCAL, STATE AND FEDERAL AGENCIES FOR THE INSTALLATION OF ALL SYSTEMS AND EQUIPMENT. THE CONTRACTOR SHALL BE RESPONSIBLE FOR THE OBTAINING OF ALL NECESSARY PERMITS AND APPROVALS FROM THE LOCAL, STATE AND FEDERAL AGENCIES FOR THE INSTALLATION OF ALL SYSTEMS AND EQUIPMENT.
- THE CONTRACTOR SHALL BE RESPONSIBLE FOR THE OBTAINING OF ALL NECESSARY PERMITS AND APPROVALS FROM THE LOCAL, STATE AND FEDERAL AGENCIES FOR THE INSTALLATION OF ALL SYSTEMS AND EQUIPMENT. THE CONTRACTOR SHALL BE RESPONSIBLE FOR THE OBTAINING OF ALL NECESSARY PERMITS AND APPROVALS FROM THE LOCAL, STATE AND FEDERAL AGENCIES FOR THE INSTALLATION OF ALL SYSTEMS AND EQUIPMENT.
- THE CONTRACTOR SHALL BE RESPONSIBLE FOR THE OBTAINING OF ALL NECESSARY PERMITS AND APPROVALS FROM THE LOCAL, STATE AND FEDERAL AGENCIES FOR THE INSTALLATION OF ALL SYSTEMS AND EQUIPMENT. THE CONTRACTOR SHALL BE RESPONSIBLE FOR THE OBTAINING OF ALL NECESSARY PERMITS AND APPROVALS FROM THE LOCAL, STATE AND FEDERAL AGENCIES FOR THE INSTALLATION OF ALL SYSTEMS AND EQUIPMENT.



- MECHANICAL SYMBOLS
- SUPPLY AIR
 - RETURN AIR
 - EXHAUST AIR
 - POTENTIAL CONDENSATION
 - POTENTIAL HOT WATER
 - POTENTIAL COLD WATER
 - VENT
 - DUCT INSULATION



- MECHANICAL SYMBOLS
- COIL
 - DAMPER
 - FAN
 - CONDENSATION
 - HOT WATER
 - COLD WATER
 - VENT
 - DUCT INSULATION

ABBREVIATIONS

SYMBOL	ABBREVIATION	DESCRIPTION
AS	APPLICABLE SYSTEM	APPLICABLE SYSTEM
AV	AIR VOLUME	AIR VOLUME
AVR	AIR VOLUME RATIO	AIR VOLUME RATIO
AVR1	AIR VOLUME RATIO 1	AIR VOLUME RATIO 1
AVR2	AIR VOLUME RATIO 2	AIR VOLUME RATIO 2
AVR3	AIR VOLUME RATIO 3	AIR VOLUME RATIO 3
AVR4	AIR VOLUME RATIO 4	AIR VOLUME RATIO 4
AVR5	AIR VOLUME RATIO 5	AIR VOLUME RATIO 5
AVR6	AIR VOLUME RATIO 6	AIR VOLUME RATIO 6
AVR7	AIR VOLUME RATIO 7	AIR VOLUME RATIO 7
AVR8	AIR VOLUME RATIO 8	AIR VOLUME RATIO 8
AVR9	AIR VOLUME RATIO 9	AIR VOLUME RATIO 9
AVR10	AIR VOLUME RATIO 10	AIR VOLUME RATIO 10
AVR11	AIR VOLUME RATIO 11	AIR VOLUME RATIO 11
AVR12	AIR VOLUME RATIO 12	AIR VOLUME RATIO 12
AVR13	AIR VOLUME RATIO 13	AIR VOLUME RATIO 13
AVR14	AIR VOLUME RATIO 14	AIR VOLUME RATIO 14
AVR15	AIR VOLUME RATIO 15	AIR VOLUME RATIO 15
AVR16	AIR VOLUME RATIO 16	AIR VOLUME RATIO 16
AVR17	AIR VOLUME RATIO 17	AIR VOLUME RATIO 17
AVR18	AIR VOLUME RATIO 18	AIR VOLUME RATIO 18
AVR19	AIR VOLUME RATIO 19	AIR VOLUME RATIO 19
AVR20	AIR VOLUME RATIO 20	AIR VOLUME RATIO 20

PIPE AND FITTINGS

SYMBOL	DESCRIPTION
---	SUPPLY AIR
---	RETURN AIR
---	EXHAUST AIR
---	POTENTIAL CONDENSATION
---	POTENTIAL HOT WATER
---	POTENTIAL COLD WATER
---	VENT
---	DUCT INSULATION

MECHANICAL

SYMBOL	DESCRIPTION
---	SUPPLY AIR
---	RETURN AIR
---	EXHAUST AIR
---	POTENTIAL CONDENSATION
---	POTENTIAL HOT WATER
---	POTENTIAL COLD WATER
---	VENT
---	DUCT INSULATION



HEAT PUMP SCHEDULE

MARK	DESCRIPTION	HEAT PUMP		ELECTRICAL		MECHANICAL		REMARKS
		MODEL	SIZE	PHASE	WIRE	SIZE	TYPE	
HP1	HEAT PUMP							

NOTES:

- ALL UNITS SHALL BE SUPPLIED ACCORDING TO THE MANUFACTURER'S INSTALLATION INSTRUCTIONS. VERIFY ALL ELECTRICAL, MECHANICAL, AND PLUMBING REQUIREMENTS WITH THE MANUFACTURER'S LITERATURE AND ASHRAE 90.1-2019.
- VERIFY THE MANUFACTURER'S RECOMMENDED CONDENSATE PUMP SIZE AND TYPE WITH THE MANUFACTURER'S LITERATURE AND ASHRAE 90.1-2019.
- VERIFY THE MANUFACTURER'S RECOMMENDED CONDENSATE PUMP SIZE AND TYPE WITH THE MANUFACTURER'S LITERATURE AND ASHRAE 90.1-2019.
- VERIFY THE MANUFACTURER'S RECOMMENDED CONDENSATE PUMP SIZE AND TYPE WITH THE MANUFACTURER'S LITERATURE AND ASHRAE 90.1-2019.
- VERIFY THE MANUFACTURER'S RECOMMENDED CONDENSATE PUMP SIZE AND TYPE WITH THE MANUFACTURER'S LITERATURE AND ASHRAE 90.1-2019.

FANCOIL UNIT SCHEDULE

MARK	DESCRIPTION	FANCOIL UNIT		ELECTRICAL		MECHANICAL		REMARKS
		MODEL	SIZE	PHASE	WIRE	SIZE	TYPE	
FU1	FANCOIL UNIT							

NOTES:

- VERIFY THE MANUFACTURER'S RECOMMENDED CONDENSATE PUMP SIZE AND TYPE WITH THE MANUFACTURER'S LITERATURE AND ASHRAE 90.1-2019.
- VERIFY THE MANUFACTURER'S RECOMMENDED CONDENSATE PUMP SIZE AND TYPE WITH THE MANUFACTURER'S LITERATURE AND ASHRAE 90.1-2019.
- VERIFY THE MANUFACTURER'S RECOMMENDED CONDENSATE PUMP SIZE AND TYPE WITH THE MANUFACTURER'S LITERATURE AND ASHRAE 90.1-2019.
- VERIFY THE MANUFACTURER'S RECOMMENDED CONDENSATE PUMP SIZE AND TYPE WITH THE MANUFACTURER'S LITERATURE AND ASHRAE 90.1-2019.
- VERIFY THE MANUFACTURER'S RECOMMENDED CONDENSATE PUMP SIZE AND TYPE WITH THE MANUFACTURER'S LITERATURE AND ASHRAE 90.1-2019.

EXHAUST FAN SCHEDULE

MARK	DESCRIPTION	EXHAUST FAN		ELECTRICAL		MECHANICAL		REMARKS
		MODEL	SIZE	PHASE	WIRE	SIZE	TYPE	
EF1	EXHAUST FAN							

NOTES:

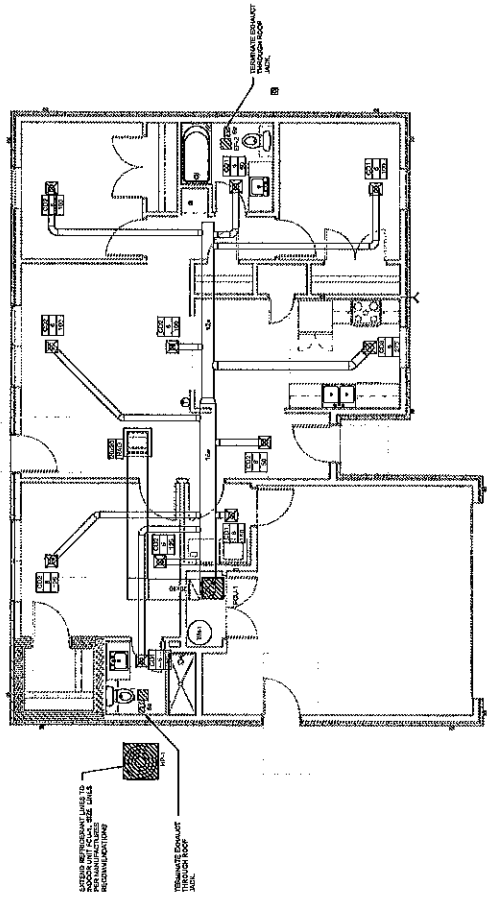
- VERIFY THE MANUFACTURER'S RECOMMENDED CONDENSATE PUMP SIZE AND TYPE WITH THE MANUFACTURER'S LITERATURE AND ASHRAE 90.1-2019.
- VERIFY THE MANUFACTURER'S RECOMMENDED CONDENSATE PUMP SIZE AND TYPE WITH THE MANUFACTURER'S LITERATURE AND ASHRAE 90.1-2019.
- VERIFY THE MANUFACTURER'S RECOMMENDED CONDENSATE PUMP SIZE AND TYPE WITH THE MANUFACTURER'S LITERATURE AND ASHRAE 90.1-2019.
- VERIFY THE MANUFACTURER'S RECOMMENDED CONDENSATE PUMP SIZE AND TYPE WITH THE MANUFACTURER'S LITERATURE AND ASHRAE 90.1-2019.
- VERIFY THE MANUFACTURER'S RECOMMENDED CONDENSATE PUMP SIZE AND TYPE WITH THE MANUFACTURER'S LITERATURE AND ASHRAE 90.1-2019.

AIR DEVICE SCHEDULE

MARK	DESCRIPTION	AIR DEVICE		ELECTRICAL		MECHANICAL		REMARKS
		MODEL	SIZE	PHASE	WIRE	SIZE	TYPE	
AD1	AIR DEVICE							

NOTES:

- VERIFY THE MANUFACTURER'S RECOMMENDED CONDENSATE PUMP SIZE AND TYPE WITH THE MANUFACTURER'S LITERATURE AND ASHRAE 90.1-2019.
- VERIFY THE MANUFACTURER'S RECOMMENDED CONDENSATE PUMP SIZE AND TYPE WITH THE MANUFACTURER'S LITERATURE AND ASHRAE 90.1-2019.
- VERIFY THE MANUFACTURER'S RECOMMENDED CONDENSATE PUMP SIZE AND TYPE WITH THE MANUFACTURER'S LITERATURE AND ASHRAE 90.1-2019.
- VERIFY THE MANUFACTURER'S RECOMMENDED CONDENSATE PUMP SIZE AND TYPE WITH THE MANUFACTURER'S LITERATURE AND ASHRAE 90.1-2019.
- VERIFY THE MANUFACTURER'S RECOMMENDED CONDENSATE PUMP SIZE AND TYPE WITH THE MANUFACTURER'S LITERATURE AND ASHRAE 90.1-2019.



① FIRST FLOOR HVAC PLAN



STANDARD NOTES:

1. ALL PLUMBING SHALL BE INSTALLED IN ACCORDANCE WITH THE LATEST EDITIONS OF THE UPC, IPC, AND IF APPLICABLE, THE LOCAL CODES.
2. THE WORK SHALL BE INSTALLED IN ACCORDANCE WITH THE LATEST EDITIONS OF THE UPC, IPC, AND IF APPLICABLE, THE LOCAL CODES.
3. ALL PLUMBING SHALL BE INSTALLED IN ACCORDANCE WITH THE LATEST EDITIONS OF THE UPC, IPC, AND IF APPLICABLE, THE LOCAL CODES.
4. ALL PLUMBING SHALL BE INSTALLED IN ACCORDANCE WITH THE LATEST EDITIONS OF THE UPC, IPC, AND IF APPLICABLE, THE LOCAL CODES.
5. ALL PLUMBING SHALL BE INSTALLED IN ACCORDANCE WITH THE LATEST EDITIONS OF THE UPC, IPC, AND IF APPLICABLE, THE LOCAL CODES.
6. ALL PLUMBING SHALL BE INSTALLED IN ACCORDANCE WITH THE LATEST EDITIONS OF THE UPC, IPC, AND IF APPLICABLE, THE LOCAL CODES.
7. ALL PLUMBING SHALL BE INSTALLED IN ACCORDANCE WITH THE LATEST EDITIONS OF THE UPC, IPC, AND IF APPLICABLE, THE LOCAL CODES.
8. ALL PLUMBING SHALL BE INSTALLED IN ACCORDANCE WITH THE LATEST EDITIONS OF THE UPC, IPC, AND IF APPLICABLE, THE LOCAL CODES.
9. ALL PLUMBING SHALL BE INSTALLED IN ACCORDANCE WITH THE LATEST EDITIONS OF THE UPC, IPC, AND IF APPLICABLE, THE LOCAL CODES.
10. ALL PLUMBING SHALL BE INSTALLED IN ACCORDANCE WITH THE LATEST EDITIONS OF THE UPC, IPC, AND IF APPLICABLE, THE LOCAL CODES.

NOTES:

1. ALL PLUMBING SHALL BE INSTALLED IN ACCORDANCE WITH THE LATEST EDITIONS OF THE UPC, IPC, AND IF APPLICABLE, THE LOCAL CODES.
2. ALL PLUMBING SHALL BE INSTALLED IN ACCORDANCE WITH THE LATEST EDITIONS OF THE UPC, IPC, AND IF APPLICABLE, THE LOCAL CODES.
3. ALL PLUMBING SHALL BE INSTALLED IN ACCORDANCE WITH THE LATEST EDITIONS OF THE UPC, IPC, AND IF APPLICABLE, THE LOCAL CODES.
4. ALL PLUMBING SHALL BE INSTALLED IN ACCORDANCE WITH THE LATEST EDITIONS OF THE UPC, IPC, AND IF APPLICABLE, THE LOCAL CODES.
5. ALL PLUMBING SHALL BE INSTALLED IN ACCORDANCE WITH THE LATEST EDITIONS OF THE UPC, IPC, AND IF APPLICABLE, THE LOCAL CODES.
6. ALL PLUMBING SHALL BE INSTALLED IN ACCORDANCE WITH THE LATEST EDITIONS OF THE UPC, IPC, AND IF APPLICABLE, THE LOCAL CODES.
7. ALL PLUMBING SHALL BE INSTALLED IN ACCORDANCE WITH THE LATEST EDITIONS OF THE UPC, IPC, AND IF APPLICABLE, THE LOCAL CODES.
8. ALL PLUMBING SHALL BE INSTALLED IN ACCORDANCE WITH THE LATEST EDITIONS OF THE UPC, IPC, AND IF APPLICABLE, THE LOCAL CODES.
9. ALL PLUMBING SHALL BE INSTALLED IN ACCORDANCE WITH THE LATEST EDITIONS OF THE UPC, IPC, AND IF APPLICABLE, THE LOCAL CODES.
10. ALL PLUMBING SHALL BE INSTALLED IN ACCORDANCE WITH THE LATEST EDITIONS OF THE UPC, IPC, AND IF APPLICABLE, THE LOCAL CODES.

CONTRACTOR RESPONSIBILITIES:

1. THE CONTRACTOR SHALL BE RESPONSIBLE FOR OBTAINING ALL NECESSARY PERMITS AND APPROVALS FROM THE LOCAL AUTHORITIES.
2. THE CONTRACTOR SHALL BE RESPONSIBLE FOR OBTAINING ALL NECESSARY PERMITS AND APPROVALS FROM THE LOCAL AUTHORITIES.
3. THE CONTRACTOR SHALL BE RESPONSIBLE FOR OBTAINING ALL NECESSARY PERMITS AND APPROVALS FROM THE LOCAL AUTHORITIES.
4. THE CONTRACTOR SHALL BE RESPONSIBLE FOR OBTAINING ALL NECESSARY PERMITS AND APPROVALS FROM THE LOCAL AUTHORITIES.
5. THE CONTRACTOR SHALL BE RESPONSIBLE FOR OBTAINING ALL NECESSARY PERMITS AND APPROVALS FROM THE LOCAL AUTHORITIES.
6. THE CONTRACTOR SHALL BE RESPONSIBLE FOR OBTAINING ALL NECESSARY PERMITS AND APPROVALS FROM THE LOCAL AUTHORITIES.
7. THE CONTRACTOR SHALL BE RESPONSIBLE FOR OBTAINING ALL NECESSARY PERMITS AND APPROVALS FROM THE LOCAL AUTHORITIES.
8. THE CONTRACTOR SHALL BE RESPONSIBLE FOR OBTAINING ALL NECESSARY PERMITS AND APPROVALS FROM THE LOCAL AUTHORITIES.
9. THE CONTRACTOR SHALL BE RESPONSIBLE FOR OBTAINING ALL NECESSARY PERMITS AND APPROVALS FROM THE LOCAL AUTHORITIES.
10. THE CONTRACTOR SHALL BE RESPONSIBLE FOR OBTAINING ALL NECESSARY PERMITS AND APPROVALS FROM THE LOCAL AUTHORITIES.

LEGEND:

EXPLANATIONS:

- POTABLE COLD WATER
- POTABLE HOT WATER
- POTABLE HOT WATER RETURN
- VENT

ABBREVIATIONS:

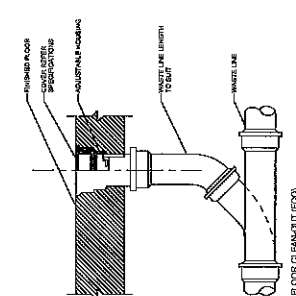
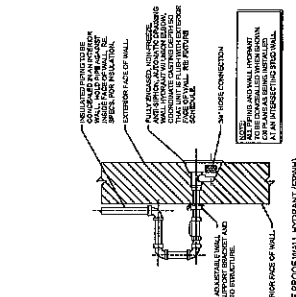
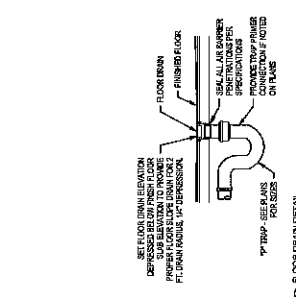
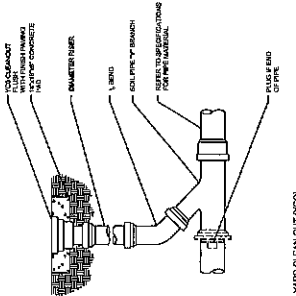
- AC ON POTABLE COLD WATER
- AC HW POTABLE HOT WATER
- AC HW R POTABLE HOT WATER RETURN
- AC V VENT
- AC OA COMPRESSED AIR
- AC BS WATER BURNER
- AC G GAS
- AC M MULTIPLE GAS
- AC VTR VENT THROUGH ROOF

ABBREVIATIONS	
A	AC ON POTABLE COLD WATER
B	AC HW POTABLE HOT WATER
C	AC HW R POTABLE HOT WATER RETURN
D	AC V VENT
E	AC OA COMPRESSED AIR
F	AC BS WATER BURNER
G	AC G GAS
H	AC M MULTIPLE GAS
I	AC VTR VENT THROUGH ROOF
J	AC VTR VENT THROUGH ROOF
K	AC VTR VENT THROUGH ROOF
L	AC VTR VENT THROUGH ROOF
M	AC VTR VENT THROUGH ROOF
N	AC VTR VENT THROUGH ROOF
O	AC VTR VENT THROUGH ROOF
P	AC VTR VENT THROUGH ROOF
Q	AC VTR VENT THROUGH ROOF
R	AC VTR VENT THROUGH ROOF
S	AC VTR VENT THROUGH ROOF
T	AC VTR VENT THROUGH ROOF
U	AC VTR VENT THROUGH ROOF
V	AC VTR VENT THROUGH ROOF
W	AC VTR VENT THROUGH ROOF
X	AC VTR VENT THROUGH ROOF
Y	AC VTR VENT THROUGH ROOF
Z	AC VTR VENT THROUGH ROOF

PIPE AND FITTINGS	
1	PIPE
2	FLANGE
3	FLANGE GASKET
4	FLANGE BOLTS
5	FLANGE NUTS
6	FLANGE WASHERS
7	FLANGE LOCKWASHERS
8	FLANGE STUDS
9	FLANGE BRACKET
10	FLANGE SUPPORT
11	FLANGE BRACKET
12	FLANGE SUPPORT
13	FLANGE BRACKET
14	FLANGE SUPPORT
15	FLANGE BRACKET
16	FLANGE SUPPORT
17	FLANGE BRACKET
18	FLANGE SUPPORT
19	FLANGE BRACKET
20	FLANGE SUPPORT
21	FLANGE BRACKET
22	FLANGE SUPPORT
23	FLANGE BRACKET
24	FLANGE SUPPORT
25	FLANGE BRACKET
26	FLANGE SUPPORT
27	FLANGE BRACKET
28	FLANGE SUPPORT
29	FLANGE BRACKET
30	FLANGE SUPPORT
31	FLANGE BRACKET
32	FLANGE SUPPORT
33	FLANGE BRACKET
34	FLANGE SUPPORT
35	FLANGE BRACKET
36	FLANGE SUPPORT
37	FLANGE BRACKET
38	FLANGE SUPPORT
39	FLANGE BRACKET
40	FLANGE SUPPORT
41	FLANGE BRACKET
42	FLANGE SUPPORT
43	FLANGE BRACKET
44	FLANGE SUPPORT
45	FLANGE BRACKET
46	FLANGE SUPPORT
47	FLANGE BRACKET
48	FLANGE SUPPORT
49	FLANGE BRACKET
50	FLANGE SUPPORT



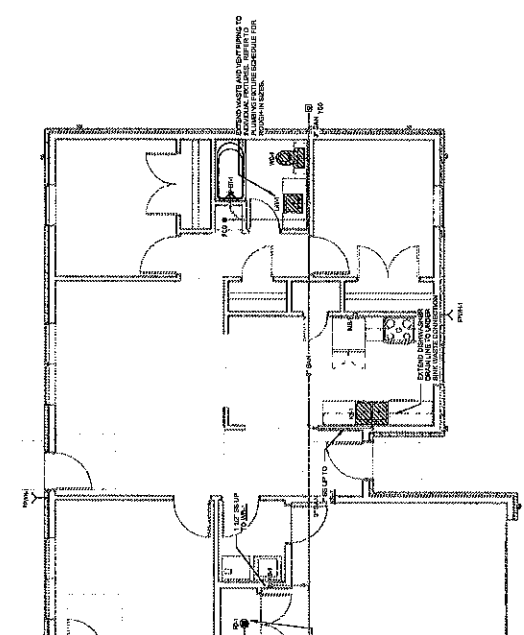
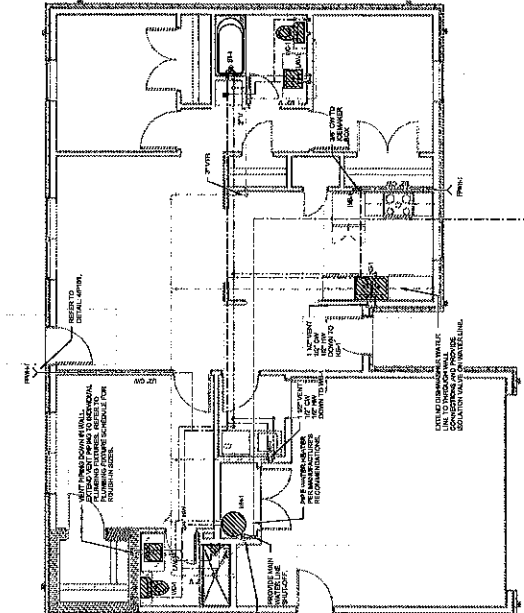
MPW ENGINEERING, LLC
111 W. TULLAMORE BLVD
SUITE 100
TULLAMORE, NC 27577
PHONE: (919) 328-1101 FAX: (919) 328-1102
WWW.MPWENGINEERING.COM
202224104
DATE: 05/22/2023
DRAWN BY: JAS
CHECKED BY: JAS
CONSTRUCTION DOCUMENTS
DATE PLOTTED: 05/22/2023 10:55 AM
SCALE: AS SHOWN



MARK	SIZE	MANUFACTURER & MODEL	TRAP VOLUME	WATER	VENT	W/OUT	HT/WD
WC-1	1/2\"/>						

MARK	SIZE	MANUFACTURER & MODEL	TRAP VOLUME	WATER	VENT	W/OUT	HT/WD
WC-1	1/2\"/>						

NOTE: 1. ALL DIMENSIONS TO CENTERLINE UNLESS NOTED OTHERWISE.
2. ALL DIMENSIONS TO CENTERLINE UNLESS NOTED OTHERWISE.



1. FIRST FLOOR DOMESTIC WATER PLAN
SCALE: 1/4\"/>

1. FIRST FLOOR SANITARY PLAN
SCALE: 1/4\"/>